



Full wwPDB X-ray Structure Validation Report ⓘ

Jan 31, 2016 – 07:35 PM GMT

PDB ID : 1GCK
Title : THERMUS THERMOPHILUS ASPARTATE AMINOTRANSFERASE
DOUBLE MUTANT 1 COMPLEXED WITH ASPARTATE
Authors : Ura, H.; Nakai, T.; Hirotsu, K.; Kuramitsu, S.
Deposited on : 2000-08-04
Resolution : 2.50 Å(reported)

This is a Full wwPDB X-ray Structure Validation Report for a publicly released PDB entry.
We welcome your comments at validation@mail.wwpdb.org
A user guide is available at
<http://wwpdb.org/validation/2016/XrayValidationReportHelp>
with specific help available everywhere you see the ⓘ symbol.

The following versions of software and data (see [references ⓘ](#)) were used in the production of this report:

MolProbity : 4.02b-467
Mogul : 1.7 (RC4), CSD as536be (2015)
Xtriage (Phenix) : 1.9-1692
EDS : rb-20026688
Percentile statistics : 20151230.v01 (using entries in the PDB archive December 30th 2015)
Refmac : 5.8.0135
CCP4 : 6.5.0
Ideal geometry (proteins) : Engh & Huber (2001)
Ideal geometry (DNA, RNA) : Parkinson et al. (1996)
Validation Pipeline (wwPDB-VP) : trunk26865

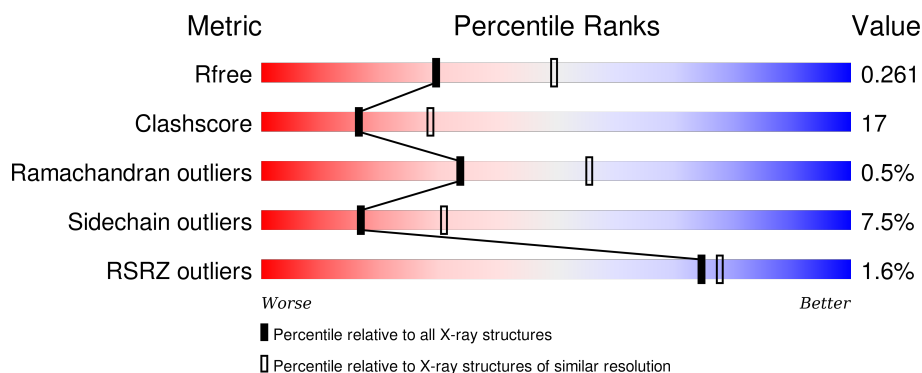
1 Overall quality at a glance

The following experimental techniques were used to determine the structure:

X-RAY DIFFRACTION

The reported resolution of this entry is 2.50 Å.

Percentile scores (ranging between 0-100) for global validation metrics of the entry are shown in the following graphic. The table shows the number of entries on which the scores are based.



Metric	Whole archive (#Entries)	Similar resolution (#Entries, resolution range(Å))
R_{free}	91344	3553 (2.50-2.50)
Clashscore	102246	4242 (2.50-2.50)
Ramachandran outliers	100387	4156 (2.50-2.50)
Sidechain outliers	100360	4158 (2.50-2.50)
RSRZ outliers	91569	3562 (2.50-2.50)

The table below summarises the geometric issues observed across the polymeric chains and their fit to the electron density. The red, orange, yellow and green segments on the lower bar indicate the fraction of residues that contain outliers for ≥ 3 , 2, 1 and 0 types of geometric quality criteria. A grey segment represents the fraction of residues that are not modelled. The numeric value for each fraction is indicated below the corresponding segment, with a dot representing fractions $\leq 5\%$. The upper red bar (where present) indicates the fraction of residues that have poor fit to the electron density. The numeric value is given above the bar.

Mol	Chain	Length	Quality of chain
1	A	385	
1	B	385	

The following table lists non-polymeric compounds, carbohydrate monomers and non-standard residues in protein, DNA, RNA chains that are outliers for geometric or electron-density-fit criteria:

Mol	Type	Chain	Res	Chirality	Geometry	Clashes	Electron density
2	ASP	A	414	-	-	-	X
2	ASP	B	914	-	-	X	-
3	PLP	A	413	-	-	-	X

2 Entry composition [i](#)

There are 4 unique types of molecules in this entry. The entry contains 5960 atoms, of which 0 are hydrogens and 0 are deuteriums.

In the tables below, the ZeroOcc column contains the number of atoms modelled with zero occupancy, the AltConf column contains the number of residues with at least one atom in alternate conformation and the Trace column contains the number of residues modelled with at most 2 atoms.

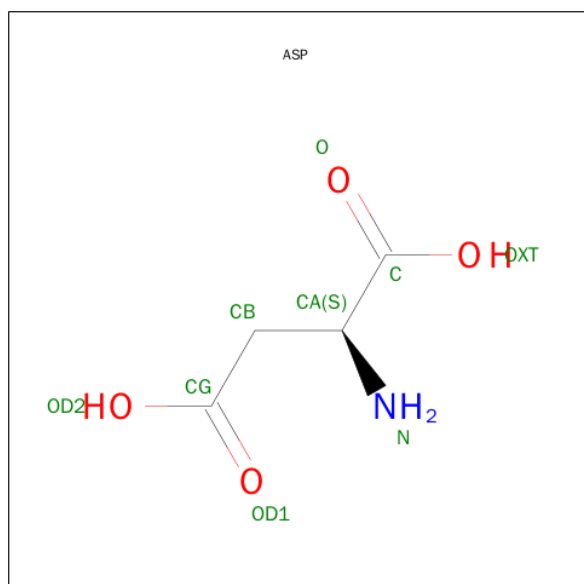
- Molecule 1 is a protein called ASPARTATE AMINOTRANSFERASE.

Mol	Chain	Residues	Atoms					ZeroOcc	AltConf	Trace
1	A	382	Total	C	N	O	S	0	0	0
			2946	1864	523	551	8			
1	B	382	Total	C	N	O	S	0	0	0
			2946	1864	523	551	8			

There are 4 discrepancies between the modelled and reference sequences:

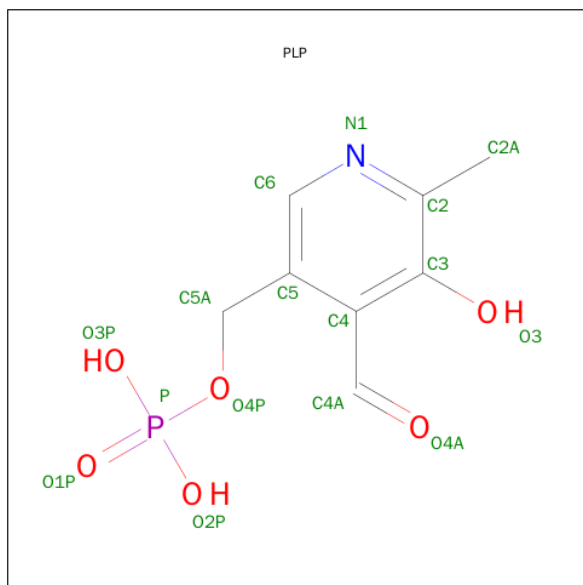
Chain	Residue	Modelled	Actual	Comment	Reference
A	101	SER	LYS	ENGINEERED	UNP Q56232
A	261	ARG	SER	ENGINEERED	UNP Q56232
B	601	SER	LYS	ENGINEERED	UNP Q56232
B	761	ARG	SER	ENGINEERED	UNP Q56232

- Molecule 2 is ASPARTIC ACID (three-letter code: ASP) (formula: $C_4H_7NO_4$).



Mol	Chain	Residues	Atoms				ZeroOcc	AltConf
2	A	1	Total	C	N	O	0	0
			9	4	1	4		
2	B	1	Total	C	N	O	0	0
			9	4	1	4		

- Molecule 3 is PYRIDOXAL-5'-PHOSPHATE (three-letter code: PLP) (formula: $C_8H_{10}NO_6P$).



Mol	Chain	Residues	Atoms					ZeroOcc	AltConf
3	A	1	Total	C	N	O	P	0	0
			15	8	1	5	1		
3	B	1	Total	C	N	O	P	0	0
			15	8	1	5	1		

- Molecule 4 is water.

Mol	Chain	Residues	Atoms		ZeroOcc	AltConf
4	A	9	Total	O	0	0
			9	9		
4	B	11	Total	O	0	0
			11	11		

4 Data and refinement statistics

Property	Value	Source
Space group	P 21 21 21	Depositor
Cell constants a, b, c, α , β , γ	62.75Å 74.89Å 163.90Å 90.00° 90.00° 90.00°	Depositor
Resolution (Å)	8.00 – 2.50 46.15 – 2.50	Depositor EDS
% Data completeness (in resolution range)	85.3 (8.00-2.50) 89.6 (46.15-2.50)	Depositor EDS
R_{merge}	0.07	Depositor
R_{sym}	(Not available)	Depositor
$\langle I/\sigma(I) \rangle$ ¹	2.10 (at 2.51Å)	Xtriage
Refinement program	X-PLOR 3.851	Depositor
R, R_{free}	0.205 , 0.284 0.193 , 0.261	Depositor DCC
R_{free} test set	2361 reflections (9.91%)	DCC
Wilson B-factor (Å ²)	34.0	Xtriage
Anisotropy	0.338	Xtriage
Bulk solvent k_{sol} (e/Å ³), B_{sol} (Å ²)	0.30 , 54.6	EDS
Estimated twinning fraction	No twinning to report.	Xtriage
L-test for twinning ²	$\langle L \rangle = 0.48$, $\langle L^2 \rangle = 0.32$	Xtriage
Outliers	0 of 24610 reflections	Xtriage
F_o, F_c correlation	0.94	EDS
Total number of atoms	5960	wwPDB-VP
Average B, all atoms (Å ²)	22.0	wwPDB-VP

Xtriage's analysis on translational NCS is as follows: *The largest off-origin peak in the Patterson function is 4.45% of the height of the origin peak. No significant pseudotranslation is detected.*

¹Intensities estimated from amplitudes.

²Theoretical values of $\langle |L| \rangle$, $\langle L^2 \rangle$ for acentric reflections are 0.5, 0.375 respectively for untwinned datasets, and 0.333, 0.2 for perfectly twinned datasets.

5 Model quality

5.1 Standard geometry

Bond lengths and bond angles in the following residue types are not validated in this section: PLP

The Z score for a bond length (or angle) is the number of standard deviations the observed value is removed from the expected value. A bond length (or angle) with $|Z| > 5$ is considered an outlier worth inspection. RMSZ is the root-mean-square of all Z scores of the bond lengths (or angles).

Mol	Chain	Bond lengths		Bond angles	
		RMSZ	$\# Z > 5$	RMSZ	$\# Z > 5$
1	A	0.66	4/3007 (0.1%)	0.89	12/4089 (0.3%)
1	B	0.61	0/3007	0.88	5/4089 (0.1%)
All	All	0.64	4/6014 (0.1%)	0.88	17/8178 (0.2%)

Chiral center outliers are detected by calculating the chiral volume of a chiral center and verifying if the center is modelled as a planar moiety or with the opposite hand. A planarity outlier is detected by checking planarity of atoms in a peptide group, atoms in a mainchain group or atoms of a sidechain that are expected to be planar.

Mol	Chain	#Chirality outliers	#Planarity outliers
1	A	0	2
1	B	0	1
All	All	0	3

All (4) bond length outliers are listed below:

Mol	Chain	Res	Type	Atoms	Z	Observed(Å)	Ideal(Å)
1	A	214	GLU	CG-CD	-9.27	1.38	1.51
1	A	21	ALA	N-CA	8.62	1.63	1.46
1	A	28	ARG	CZ-NH1	6.58	1.41	1.33
1	A	28	ARG	CZ-NH2	5.81	1.40	1.33

All (17) bond angle outliers are listed below:

Mol	Chain	Res	Type	Atoms	Z	Observed(°)	Ideal(°)
1	A	28	ARG	NE-CZ-NH2	-15.22	112.69	120.30
1	B	529	GLN	N-CA-CB	-8.20	95.85	110.60
1	A	212	GLU	N-CA-CB	7.43	123.97	110.60
1	A	20	ASN	N-CA-CB	6.64	122.56	110.60
1	A	28	ARG	NH1-CZ-NH2	6.59	126.65	119.40

Continued on next page...

Continued from previous page...

Mol	Chain	Res	Type	Atoms	Z	Observed(°)	Ideal(°)
1	A	2	ARG	N-CA-CB	6.38	122.08	110.60
1	B	507	ARG	N-CA-CB	-6.36	99.16	110.60
1	A	28	ARG	CG-CD-NE	-6.11	98.97	111.80
1	A	28	ARG	NE-CZ-NH1	-5.79	117.40	120.30
1	A	174	ASN	N-CA-CB	-5.62	100.49	110.60
1	B	511	MET	N-CA-CB	5.50	120.51	110.60
1	A	268	ASP	N-CA-CB	-5.41	100.86	110.60
1	B	712	GLU	N-CA-CB	5.29	120.12	110.60
1	A	220	ARG	N-CA-CB	-5.25	101.14	110.60
1	A	174	ASN	N-CA-C	5.09	124.74	111.00
1	A	20	ASN	CA-C-N	-5.07	106.05	117.20
1	B	833	ASP	N-CA-CB	-5.02	101.56	110.60

There are no chirality outliers.

All (3) planarity outliers are listed below:

Mol	Chain	Res	Type	Group
1	A	20	ASN	Mainchain
1	A	28	ARG	Sidechain
1	B	525	GLU	Mainchain

5.2 Too-close contacts

In the following table, the Non-H and H(model) columns list the number of non-hydrogen atoms and hydrogen atoms in the chain respectively. The H(added) column lists the number of hydrogen atoms added and optimized by MolProbity. The Clashes column lists the number of clashes within the asymmetric unit, whereas Symm-Clashes lists symmetry related clashes.

Mol	Chain	Non-H	H(model)	H(added)	Clashes	Symm-Clashes
1	A	2946	0	2964	111	2
1	B	2946	0	2961	103	2
2	A	9	0	3	1	0
2	B	9	0	3	5	0
3	A	15	0	6	1	0
3	B	15	0	6	0	0
4	A	9	0	0	1	0
4	B	11	0	0	0	0
All	All	5960	0	5943	197	2

The all-atom clashscore is defined as the number of clashes found per 1000 atoms (including hydrogen atoms). The all-atom clashscore for this structure is 17.

All (197) close contacts within the same asymmetric unit are listed below, sorted by their clash magnitude.

Atom-1	Atom-2	Interatomic distance (Å)	Clash overlap (Å)
1:A:188:ALA:HA	1:A:191:ARG:NH1	1.54	1.19
1:A:188:ALA:HA	1:A:191:ARG:HH12	1.07	0.96
1:B:727:LEU:HD11	1:B:752:VAL:HG11	1.57	0.86
1:B:526:LEU:HG	1:B:531:VAL:HG21	1.57	0.86
1:A:1:MET:HB3	1:B:697:ASP:O	1.77	0.84
1:A:77:LEU:HB3	1:A:94:THR:HG21	1.58	0.84
1:B:830:ILE:HD13	1:B:841:LEU:HD21	1.61	0.83
1:A:173:PRO:HG2	1:A:206:TYR:O	1.80	0.80
1:A:45:THR:HG22	1:B:562:THR:HG21	1.64	0.80
1:A:371:LEU:O	1:A:375:LEU:HG	1.81	0.79
1:A:188:ALA:CA	1:A:191:ARG:HH12	1.92	0.78
1:A:261:ARG:NH1	1:A:265:THR:HG23	2.02	0.74
1:A:227:LEU:HD21	1:A:252:VAL:HG11	1.71	0.73
1:A:2:ARG:HH11	1:B:725:HIS:CD2	2.06	0.73
1:A:37:THR:HG23	1:A:347:ALA:O	1.87	0.73
1:B:583:ARG:HG2	1:B:583:ARG:HH11	1.54	0.72
1:B:583:ARG:NH1	1:B:583:ARG:HG2	2.06	0.71
1:B:539:GLY:HA3	2:B:914:ASP:HA	1.74	0.68
1:B:837:ALA:O	1:B:841:LEU:HG	1.95	0.66
1:A:34:VAL:HG11	1:A:373:LYS:HD2	1.79	0.65
1:B:873:LYS:O	1:B:876:GLU:HB3	1.95	0.65
1:A:2:ARG:NH1	1:B:725:HIS:CD2	2.65	0.65
1:B:717:SER:H	1:B:720:ARG:HH12	1.45	0.64
1:B:868:GLU:O	1:B:872:ARG:HG3	1.98	0.64
1:B:525:GLU:HG3	1:B:526:LEU:N	2.12	0.63
1:B:668:LEU:HD12	1:B:669:VAL:N	2.13	0.63
1:A:34:VAL:CG1	1:A:373:LYS:HD2	2.28	0.63
1:B:881:VAL:O	1:B:882:LEU:HB2	1.99	0.62
1:B:835:VAL:O	1:B:839:GLU:HG3	1.99	0.62
1:B:655:GLU:OE1	1:B:658:ARG:NH1	2.33	0.62
1:B:529:GLN:O	1:B:529:GLN:HG2	1.99	0.62
1:A:2:ARG:NH1	1:B:725:HIS:NE2	2.48	0.61
1:B:786:ARG:O	1:B:790:GLU:HG2	1.99	0.61
1:A:373:LYS:O	1:A:377:ARG:HG3	2.01	0.60
1:B:515:ALA:O	1:B:519:VAL:HG23	2.01	0.60
1:A:304:LEU:HD11	1:A:317:PRO:HD2	1.83	0.60
1:A:117:GLU:HG2	1:A:138:VAL:CG2	2.32	0.59
1:B:764:THR:O	1:B:765:THR:HB	2.03	0.59
1:B:526:LEU:O	1:B:531:VAL:HG22	2.02	0.58
1:A:227:LEU:HD21	1:A:252:VAL:CG1	2.33	0.57

Continued on next page...

Continued from previous page...

Atom-1	Atom-2	Interatomic distance (Å)	Clash overlap (Å)
1:A:128:TYR:HB2	1:A:129:PRO:HD3	1.86	0.57
1:A:7:ARG:NH2	1:B:612:LEU:O	2.38	0.57
1:A:303:LEU:HD23	1:A:375:LEU:HD21	1.87	0.57
1:A:24:LEU:HA	1:A:27:ARG:HB2	1.86	0.57
1:B:831:ALA:HB1	1:B:832:PRO:HD2	1.84	0.57
1:A:174:ASN:HD22	1:A:177:THR:H	1.52	0.57
1:A:77:LEU:CB	1:A:94:THR:HG21	2.32	0.57
1:A:61:LYS:HD3	1:A:273:TRP:CE2	2.40	0.57
1:A:88:SER:HB2	4:A:1019:HOH:O	2.04	0.57
1:B:717:SER:H	1:B:720:ARG:NH1	2.04	0.56
1:A:261:ARG:NH2	2:B:914:ASP:OD1	2.39	0.56
1:B:869:GLU:OE1	1:B:872:ARG:NH1	2.39	0.56
1:A:261:ARG:NH1	1:A:265:THR:CG2	2.69	0.56
1:B:683:LYS:O	1:B:687:GLU:HB2	2.06	0.55
1:A:107:LEU:HD21	1:A:227:LEU:HD22	1.88	0.55
1:A:261:ARG:HD2	1:A:261:ARG:O	2.06	0.55
1:A:312:LEU:HD13	1:A:325:MET:SD	2.46	0.55
1:B:836:ARG:NH1	1:B:839:GLU:OE1	2.39	0.55
1:B:795:ALA:O	1:B:799:ARG:HG3	2.06	0.55
1:A:186:LEU:HG	1:A:218:PRO:HG3	1.89	0.55
1:A:261:ARG:HD2	1:A:261:ARG:C	2.27	0.55
1:A:203:ASP:OD1	3:A:413:PLP:N1	2.40	0.55
1:A:378:PHE:O	1:A:381:VAL:HG22	2.07	0.55
1:B:628:TYR:HB2	1:B:629:PRO:HD3	1.89	0.54
1:A:29:GLN:HB3	1:A:31:VAL:HG23	1.89	0.54
1:A:191:ARG:HH11	1:A:191:ARG:HB3	1.73	0.54
1:A:334:GLU:HG3	1:A:358:GLY:H	1.73	0.53
1:A:45:THR:CG2	1:B:562:THR:HG21	2.36	0.53
1:A:191:ARG:HH11	1:A:191:ARG:CB	2.21	0.53
1:A:22:LYS:NZ	1:A:339:GLU:OE2	2.40	0.53
1:B:839:GLU:O	1:B:843:GLU:HG3	2.08	0.53
1:A:51:GLU:OE1	1:A:54:ARG:NH1	2.42	0.53
1:A:188:ALA:HA	1:A:191:ARG:HH11	1.61	0.53
1:A:367:SER:OG	1:A:370:ASN:ND2	2.41	0.53
1:B:524:LEU:HB3	1:B:528:ARG:NH1	2.24	0.53
1:A:77:LEU:HD21	1:A:245:TYR:CB	2.39	0.52
1:A:122:SER:HA	1:A:123:PRO:C	2.30	0.52
1:A:4:LEU:HD12	1:B:610:ALA:O	2.10	0.52
1:B:525:GLU:O	1:B:529:GLN:HB2	2.09	0.52
1:B:877:ARG:O	1:B:881:VAL:HG12	2.09	0.52
1:B:645:LEU:HB2	1:B:648:GLU:HG3	1.91	0.51

Continued on next page...

Continued from previous page...

Atom-1	Atom-2	Interatomic distance (Å)	Clash overlap (Å)
1:A:251:GLU:HG2	1:B:504:LEU:HD11	1.92	0.51
1:B:525:GLU:CG	1:B:526:LEU:N	2.72	0.51
1:A:345:GLY:HA3	1:A:377:ARG:HH11	1.75	0.51
1:B:860:VAL:HG13	1:B:862:LEU:CD1	2.40	0.51
1:B:545:THR:HG23	1:B:546:PRO:HD2	1.93	0.51
1:B:860:VAL:HG13	1:B:862:LEU:HD13	1.93	0.51
1:B:803:LEU:O	1:B:807:LEU:HG	2.11	0.50
1:A:261:ARG:HH22	2:B:914:ASP:CG	2.14	0.50
1:A:170:VAL:HG11	1:A:189:LEU:HD13	1.94	0.50
1:B:877:ARG:HA	1:B:880:ARG:HD2	1.93	0.50
1:B:868:GLU:HA	1:B:871:LEU:HD12	1.94	0.50
1:A:344:ALA:HB2	1:A:381:VAL:CG1	2.42	0.50
1:A:16:THR:O	1:A:20:ASN:OD1	2.29	0.50
1:B:551:GLU:O	1:B:555:ARG:HG3	2.12	0.50
1:B:573:LEU:HD22	1:B:577:LEU:HD22	1.94	0.50
1:B:607:LEU:HG	1:B:727:LEU:HD13	1.94	0.50
1:B:628:TYR:O	1:B:632:VAL:HG23	2.12	0.50
1:A:341:LEU:HD12	1:A:348:VAL:HG21	1.94	0.50
1:A:46:PRO:HB2	1:A:48:HIS:CE1	2.47	0.50
1:A:26:LEU:O	1:A:29:GLN:HB3	2.12	0.49
1:A:41:PRO:HG2	1:A:237:ALA:HA	1.93	0.49
1:A:127:SER:O	1:A:131:MET:HG3	2.13	0.49
1:B:545:THR:CG2	1:B:546:PRO:HD2	2.42	0.49
1:A:348:VAL:HG12	1:A:362:LEU:CD2	2.43	0.49
1:A:48:HIS:O	1:A:277:GLU:HG2	2.13	0.49
1:B:527:ARG:HA	1:B:530:GLY:O	2.13	0.48
1:A:261:ARG:C	1:A:261:ARG:CD	2.82	0.48
1:B:505:SER:O	1:B:509:GLN:HG3	2.12	0.48
1:B:583:ARG:NH2	1:B:782:GLN:CD	2.67	0.48
1:A:16:THR:CG2	1:A:349:VAL:HG13	2.44	0.48
1:B:541:PRO:HB3	1:B:796:TYR:OH	2.14	0.48
1:A:8:VAL:HG11	1:B:755:ALA:HB1	1.96	0.48
1:A:90:THR:HB	1:A:91:PRO:HD2	1.96	0.47
1:A:125:TRP:NE1	2:A:414:ASP:OXT	2.47	0.47
1:A:261:ARG:NH2	2:B:914:ASP:CG	2.68	0.47
1:A:2:ARG:HH12	1:B:725:HIS:CE1	2.32	0.47
1:B:537:THR:O	1:B:538:ALA:HB3	2.15	0.47
1:B:621:LEU:O	1:B:624:TYR:HB3	2.15	0.47
1:B:655:GLU:O	1:B:659:ARG:HG3	2.14	0.47
1:B:616:ASP:OD1	1:B:666:LYS:NZ	2.47	0.47
1:B:709:LEU:O	1:B:819:GLY:HA2	2.15	0.47

Continued on next page...

Continued from previous page...

Atom-1	Atom-2	Interatomic distance (Å)	Clash overlap (Å)
1:B:617:GLU:HG2	1:B:638:VAL:CG2	2.45	0.47
1:A:191:ARG:NH1	1:A:191:ARG:CB	2.78	0.46
1:B:505:SER:O	1:B:508:VAL:HG12	2.15	0.46
1:B:815:VAL:O	1:B:817:PRO:HD3	2.15	0.46
1:A:321:PHE:HD1	1:A:321:PHE:O	1.98	0.46
1:A:264:THR:O	1:A:265:THR:HB	2.16	0.46
1:A:334:GLU:HG3	1:A:358:GLY:N	2.31	0.46
1:B:540:GLU:HB3	1:B:739:THR:HG21	1.98	0.46
1:B:567:PRO:HA	1:B:765:THR:O	2.16	0.46
1:B:580:LYS:NZ	1:B:585:ASN:HD21	2.14	0.46
1:B:804:LEU:HD23	1:B:807:LEU:HD12	1.98	0.45
1:A:18:ALA:O	1:A:22:LYS:HG3	2.16	0.45
1:A:77:LEU:HA	1:A:77:LEU:HD12	1.77	0.45
1:B:658:ARG:HB3	1:B:658:ARG:HH11	1.81	0.45
1:B:515:ALA:HA	1:B:518:ALA:HB3	1.97	0.45
1:A:333:ASP:OD2	1:A:336:ARG:NE	2.49	0.45
1:B:617:GLU:HG2	1:B:638:VAL:HG22	1.98	0.45
1:A:80:LYS:NZ	1:A:85:ASN:HD21	2.14	0.45
1:B:710:LEU:HD21	1:B:714:GLU:HA	1.99	0.45
1:B:672:SER:HA	1:B:673:PRO:C	2.37	0.45
1:A:217:SER:O	1:A:220:ARG:HB3	2.17	0.45
1:A:57:LEU:HD22	1:B:550:LYS:HG2	1.99	0.45
1:A:187:GLU:HG2	1:A:221:VAL:HG21	1.98	0.44
1:B:722:ALA:N	1:B:723:PRO:HD3	2.32	0.44
1:A:94:THR:HG22	1:A:95:ILE:N	2.32	0.44
1:B:583:ARG:CG	1:B:583:ARG:HH11	2.23	0.44
1:A:2:ARG:NH1	1:B:725:HIS:CE1	2.86	0.44
1:A:8:VAL:HG21	1:B:610:ALA:HA	1.98	0.44
1:A:117:GLU:HG2	1:A:138:VAL:HG23	1.99	0.43
1:B:527:ARG:HH12	1:B:535:ALA:HB2	1.84	0.43
1:A:26:LEU:HD12	1:A:342:LEU:HD22	2.01	0.43
1:B:862:LEU:N	1:B:862:LEU:HD13	2.34	0.43
1:B:620:VAL:O	1:B:641:GLU:HA	2.18	0.43
1:A:89:VAL:HG11	1:A:247:CYS:HB2	2.00	0.43
1:B:516:THR:HG23	1:B:626:VAL:HG21	2.00	0.43
1:A:261:ARG:HH11	1:A:265:THR:HG23	1.79	0.43
1:A:324:LEU:HA	1:A:324:LEU:HD23	1.87	0.42
1:B:687:GLU:HG3	1:B:721:VAL:HG21	2.01	0.42
1:A:334:GLU:CG	1:A:358:GLY:H	2.31	0.42
1:B:557:LEU:HA	1:B:557:LEU:HD23	1.80	0.42
1:B:662:THR:HB	1:B:663:PRO:CD	2.49	0.42

Continued on next page...

Continued from previous page...

Atom-1	Atom-2	Interatomic distance (Å)	Clash overlap (Å)
1:A:50:LYS:O	1:A:54:ARG:HG3	2.19	0.42
1:A:16:THR:HG21	1:A:349:VAL:HG13	2.02	0.42
1:A:1:MET:O	1:B:698:PHE:HA	2.20	0.42
1:B:862:LEU:N	1:B:862:LEU:CD1	2.82	0.42
1:B:587:LEU:HD11	1:B:717:SER:HB3	2.02	0.42
1:A:70:ILE:HG13	1:A:73:LEU:HB2	2.01	0.42
1:B:623:PRO:HA	1:B:854:PHE:O	2.20	0.42
1:A:255:ALA:HB1	1:B:508:VAL:HG21	2.02	0.42
1:B:539:GLY:HA3	2:B:914:ASP:CA	2.44	0.42
1:B:583:ARG:HG3	1:B:584:GLU:N	2.29	0.42
1:B:880:ARG:O	1:B:882:LEU:HG	2.19	0.42
1:A:191:ARG:NH1	1:A:191:ARG:HB2	2.34	0.41
1:A:261:ARG:HA	1:A:265:THR:HA	2.01	0.41
1:B:537:THR:O	1:B:863:SER:HB3	2.21	0.41
1:B:810:LEU:HA	1:B:810:LEU:HD12	1.93	0.41
1:A:261:ARG:O	1:A:261:ARG:CD	2.68	0.41
1:B:570:ILE:HG13	1:B:573:LEU:HB2	2.02	0.41
1:A:1:MET:HA	1:B:665:THR:O	2.20	0.41
1:A:107:LEU:O	1:A:111:ILE:HG12	2.19	0.41
1:A:33:LEU:HD12	1:A:33:LEU:O	2.20	0.41
1:A:95:ILE:O	1:A:245:TYR:HA	2.20	0.41
1:A:327:THR:HG21	1:A:360:VAL:HB	2.02	0.41
1:A:298:ARG:HG2	1:A:298:ARG:HH11	1.84	0.41
1:A:145:LEU:HA	1:A:146:PRO:HD3	1.91	0.41
1:A:77:LEU:HD21	1:A:245:TYR:HB3	2.02	0.41
1:A:148:GLU:O	1:A:151:VAL:HG12	2.21	0.40
1:A:175:ASN:OD1	1:A:361:ARG:NH1	2.51	0.40
1:A:268:ASP:O	1:A:272:GLN:HG3	2.22	0.40
1:B:881:VAL:O	1:B:882:LEU:CB	2.67	0.40
1:B:826:ASP:OD1	1:B:828:SER:HB2	2.21	0.40
1:A:337:ALA:O	1:A:341:LEU:HG	2.21	0.40
1:A:176:PRO:HB3	1:A:361:ARG:HD3	2.02	0.40
1:A:367:SER:O	1:A:371:LEU:HG	2.22	0.40
1:B:790:GLU:OE1	1:B:793:ARG:NH1	2.54	0.40

All (2) symmetry-related close contacts are listed below. The label for Atom-2 includes the symmetry operator and encoded unit-cell translations to be applied.

Atom-1	Atom-2	Interatomic distance (Å)	Clash overlap (Å)
1:A:28:ARG:NH2	1:B:529:GLN:NE2[1_655]	2.02	0.18
1:A:28:ARG:NH1	1:B:529:GLN:NE2[1_655]	2.10	0.10

5.3 Torsion angles

5.3.1 Protein backbone

In the following table, the Percentiles column shows the percent Ramachandran outliers of the chain as a percentile score with respect to all X-ray entries followed by that with respect to entries of similar resolution.

The Analysed column shows the number of residues for which the backbone conformation was analysed, and the total number of residues.

Mol	Chain	Analysed	Favoured	Allowed	Outliers	Percentiles	
1	A	380/385 (99%)	358 (94%)	21 (6%)	1 (0%)	46	68
1	B	380/385 (99%)	351 (92%)	26 (7%)	3 (1%)	24	41
All	All	760/770 (99%)	709 (93%)	47 (6%)	4 (0%)	34	55

All (4) Ramachandran outliers are listed below:

Mol	Chain	Res	Type
1	B	531	VAL
1	B	697	ASP
1	B	538	ALA
1	A	126	VAL

5.3.2 Protein sidechains

In the following table, the Percentiles column shows the percent sidechain outliers of the chain as a percentile score with respect to all X-ray entries followed by that with respect to entries of similar resolution.

The Analysed column shows the number of residues for which the sidechain conformation was analysed, and the total number of residues.

Mol	Chain	Analysed	Rotameric	Outliers	Percentiles	
1	A	305/306 (100%)	285 (93%)	20 (7%)	21	38
1	B	305/306 (100%)	279 (92%)	26 (8%)	13	25
All	All	610/612 (100%)	564 (92%)	46 (8%)	17	31

All (46) residues with a non-rotameric sidechain are listed below:

Mol	Chain	Res	Type
1	A	4	LEU
1	A	25	GLU

Continued on next page...

Continued from previous page...

Mol	Chain	Res	Type
1	A	73	LEU
1	A	75	GLU
1	A	77	LEU
1	A	82	ARG
1	A	107	LEU
1	A	186	LEU
1	A	192	LEU
1	A	200	LEU
1	A	209	LEU
1	A	220	ARG
1	A	245	TYR
1	A	254	LYS
1	A	261	ARG
1	A	282	GLN
1	A	303	LEU
1	A	310	LEU
1	A	360	VAL
1	A	376	GLU
1	B	525	GLU
1	B	573	LEU
1	B	577	LEU
1	B	583	ARG
1	B	645	LEU
1	B	647	GLU
1	B	658	ARG
1	B	664	ARG
1	B	668	LEU
1	B	686	LEU
1	B	689	LEU
1	B	692	LEU
1	B	723	PRO
1	B	739	THR
1	B	745	TYR
1	B	751	GLU
1	B	761	ARG
1	B	762	GLN
1	B	783	GLU
1	B	803	LEU
1	B	805	GLU
1	B	810	LEU
1	B	821	PHE
1	B	833	ASP

Continued on next page...

Continued from previous page...

Mol	Chain	Res	Type
1	B	862	LEU
1	B	881	VAL

Some sidechains can be flipped to improve hydrogen bonding and reduce clashes. All (6) such sidechains are listed below:

Mol	Chain	Res	Type
1	A	20	ASN
1	A	85	ASN
1	A	174	ASN
1	A	370	ASN
1	B	585	ASN
1	B	725	HIS

5.3.3 RNA [i](#)

There are no RNA molecules in this entry.

5.4 Non-standard residues in protein, DNA, RNA chains [i](#)

There are no non-standard protein/DNA/RNA residues in this entry.

5.5 Carbohydrates [i](#)

There are no carbohydrates in this entry.

5.6 Ligand geometry [i](#)

4 ligands are modelled in this entry.

In the following table, the Counts columns list the number of bonds (or angles) for which Mogul statistics could be retrieved, the number of bonds (or angles) that are observed in the model and the number of bonds (or angles) that are defined in the chemical component dictionary. The Link column lists molecule types, if any, to which the group is linked. The Z score for a bond length (or angle) is the number of standard deviations the observed value is removed from the expected value. A bond length (or angle) with $|Z| > 2$ is considered an outlier worth inspection. RMSZ is the root-mean-square of all Z scores of the bond lengths (or angles).

Mol	Type	Chain	Res	Link	Bond lengths			Bond angles		
					Counts	RMSZ	$\# Z > 2$	Counts	RMSZ	$\# Z > 2$
3	PLP	A	413	2	15,15,16	2.11	7 (46%)	21,22,23	4.26	8 (38%)

Mol	Type	Chain	Res	Link	Bond lengths			Bond angles		
					Counts	RMSZ	# Z > 2	Counts	RMSZ	# Z > 2
2	ASP	A	414	3	2,8,8	0.46	0	0,10,10	0.00	-
3	PLP	B	913	2	15,15,16	1.50	4 (26%)	21,22,23	1.75	7 (33%)
2	ASP	B	914	3	2,8,8	0.28	0	0,10,10	0.00	-

In the following table, the Chirals column lists the number of chiral outliers, the number of chiral centers analysed, the number of these observed in the model and the number defined in the chemical component dictionary. Similar counts are reported in the Torsion and Rings columns. '-' means no outliers of that kind were identified.

Mol	Type	Chain	Res	Link	Chirals	Torsions	Rings
3	PLP	A	413	2	-	0/6/6/8	0/1/1/1
2	ASP	A	414	3	-	0/2/8/8	0/0/0/0
3	PLP	B	913	2	-	0/6/6/8	0/1/1/1
2	ASP	B	914	3	-	0/2/8/8	0/0/0/0

All (11) bond length outliers are listed below:

Mol	Chain	Res	Type	Atoms	Z	Observed(Å)	Ideal(Å)
3	A	413	PLP	P-O3P	-3.65	1.41	1.54
3	A	413	PLP	O3-C3	-3.10	1.29	1.37
3	A	413	PLP	P-O1P	-2.80	1.42	1.51
3	A	413	PLP	P-O2P	-2.51	1.45	1.54
3	A	413	PLP	C3-C4	-2.45	1.33	1.40
3	B	913	PLP	P-O3P	-2.36	1.46	1.54
3	B	913	PLP	C3-C2	-2.16	1.39	1.40
3	A	413	PLP	C5-C4	2.06	1.42	1.40
3	B	913	PLP	C5-C4	2.59	1.43	1.40
3	B	913	PLP	C4A-C4	2.66	1.57	1.51
3	A	413	PLP	C4A-C4	3.27	1.58	1.51

All (15) bond angle outliers are listed below:

Mol	Chain	Res	Type	Atoms	Z	Observed(°)	Ideal(°)
3	A	413	PLP	C4A-C4-C5	-15.16	105.08	120.88
3	A	413	PLP	O2P-P-O1P	-5.25	93.69	110.58
3	B	913	PLP	O2P-P-O4P	-3.36	96.90	106.56
3	B	913	PLP	C5A-C5-C6	-2.37	114.80	119.28
3	B	913	PLP	C4A-C4-C5	-2.37	118.41	120.88
3	B	913	PLP	C5-C6-N1	-2.20	120.03	123.86
3	A	413	PLP	C5-C6-N1	-2.11	120.19	123.86
3	B	913	PLP	O4P-C5A-C5	2.11	112.48	108.99
3	A	413	PLP	O4P-C5A-C5	2.53	113.18	108.99

Continued on next page...

Continued from previous page...

Mol	Chain	Res	Type	Atoms	Z	Observed(°)	Ideal(°)
3	A	413	PLP	C6-C5-C4	2.81	120.53	118.15
3	B	913	PLP	C6-C5-C4	2.97	120.67	118.15
3	A	413	PLP	O3P-P-O4P	3.02	115.26	106.56
3	B	913	PLP	O3P-P-O1P	3.36	121.41	110.58
3	A	413	PLP	O3P-P-O1P	5.18	127.26	110.58
3	A	413	PLP	C4A-C4-C3	7.54	134.01	120.36

There are no chirality outliers.

There are no torsion outliers.

There are no ring outliers.

3 monomers are involved in 7 short contacts:

Mol	Chain	Res	Type	Clashes	Symm-Clashes
3	A	413	PLP	1	0
2	A	414	ASP	1	0
2	B	914	ASP	5	0

5.7 Other polymers [i](#)

There are no such residues in this entry.

5.8 Polymer linkage issues [i](#)

There are no chain breaks in this entry.

6 Fit of model and data [i](#)

6.1 Protein, DNA and RNA chains [i](#)

In the following table, the column labelled ‘#RSRZ> 2’ contains the number (and percentage) of RSRZ outliers, followed by percent RSRZ outliers for the chain as percentile scores relative to all X-ray entries and entries of similar resolution. The OWAB column contains the minimum, median, 95th percentile and maximum values of the occupancy-weighted average B-factor per residue. The column labelled ‘Q< 0.9’ lists the number of (and percentage) of residues with an average occupancy less than 0.9.

Mol	Chain	Analysed	<RSRZ>	#RSRZ>2	OWAB(Å ²)	Q<0.9
1	A	382/385 (99%)	-0.37	6 (1%) 74 78	6, 19, 47, 76	0
1	B	382/385 (99%)	-0.42	6 (1%) 74 78	5, 17, 46, 70	0
All	All	764/770 (99%)	-0.39	12 (1%) 74 78	5, 18, 48, 76	0

All (12) RSRZ outliers are listed below:

Mol	Chain	Res	Type	RSRZ
1	B	528	ARG	4.3
1	A	1	MET	3.4
1	A	29	GLN	3.0
1	A	23	ALA	2.9
1	B	521	ALA	2.6
1	B	525	GLU	2.5
1	A	27	ARG	2.3
1	A	26	LEU	2.2
1	B	524	LEU	2.1
1	B	516	THR	2.1
1	A	28	ARG	2.1
1	B	530	GLY	2.1

6.2 Non-standard residues in protein, DNA, RNA chains [i](#)

There are no non-standard protein/DNA/RNA residues in this entry.

6.3 Carbohydrates [i](#)

There are no carbohydrates in this entry.

6.4 Ligands [i](#)

In the following table, the Atoms column lists the number of modelled atoms in the group and the number defined in the chemical component dictionary. LLDF column lists the quality of electron density of the group with respect to its neighbouring residues in protein, DNA or RNA chains. The B-factors column lists the minimum, median, 95th percentile and maximum values of B factors of atoms in the group. The column labelled 'Q< 0.9' lists the number of atoms with occupancy less than 0.9.

Mol	Type	Chain	Res	Atoms	RSCC	RSR	LLDF	B-factors(Å ²)	Q<0.9
3	PLP	A	413	15/16	0.88	0.22	3.99	28,34,40,41	0
2	ASP	A	414	9/9	0.80	0.27	3.33	47,53,56,58	0
2	ASP	B	914	9/9	0.91	0.17	0.37	26,31,37,39	0
3	PLP	B	913	15/16	0.97	0.11	-0.05	5,18,20,22	0

6.5 Other polymers [i](#)

There are no such residues in this entry.