



Full wwPDB X-ray Structure Validation Report ⓘ

Feb 1, 2016 – 02:20 AM GMT

PDB ID : 2GM1
Title : Crystal structure of the mitotic kinesin eg5 in complex with mg-adp and n-(3-aminopropyl)-n-((3-benzyl-5-chloro-4-oxo-3,4-dihydropyrrolo[2,1-f][1,2,4]triazin-2-yl)(cyclopropyl)methyl)-4-methylbenzamide
Authors : Sheriff, S.
Deposited on : 2006-04-05
Resolution : 2.30 Å(reported)

This is a Full wwPDB X-ray Structure Validation Report for a publicly released PDB entry.
We welcome your comments at validation@mail.wwpdb.org
A user guide is available at
<http://wwpdb.org/validation/2016/XrayValidationReportHelp>
with specific help available everywhere you see the ⓘ symbol.

The following versions of software and data (see [references ⓘ](#)) were used in the production of this report:

MolProbity : 4.02b-467
Mogul : 1.7 (RC4), CSD as536be (2015)
Xtriage (Phenix) : 1.9-1692
EDS : rb-20026688
Percentile statistics : 20151230.v01 (using entries in the PDB archive December 30th 2015)
Refmac : 5.8.0135
CCP4 : 6.5.0
Ideal geometry (proteins) : Engh & Huber (2001)
Ideal geometry (DNA, RNA) : Parkinson et al. (1996)
Validation Pipeline (wwPDB-VP) : trunk26865

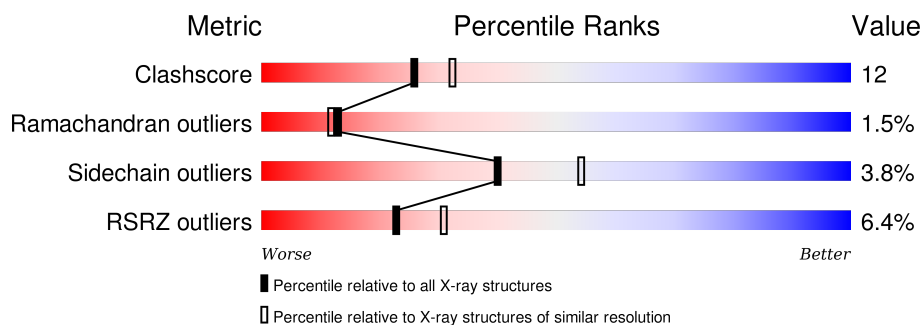
1 Overall quality at a glance ⓘ

The following experimental techniques were used to determine the structure:

X-RAY DIFFRACTION

The reported resolution of this entry is 2.30 Å.

Percentile scores (ranging between 0-100) for global validation metrics of the entry are shown in the following graphic. The table shows the number of entries on which the scores are based.



Metric	Whole archive (#Entries)	Similar resolution (#Entries, resolution range(Å))
Clashscore	102246	4452 (2.30-2.30)
Ramachandran outliers	100387	4410 (2.30-2.30)
Sidechain outliers	100360	4409 (2.30-2.30)
RSRZ outliers	91569	3857 (2.30-2.30)

The table below summarises the geometric issues observed across the polymeric chains and their fit to the electron density. The red, orange, yellow and green segments on the lower bar indicate the fraction of residues that contain outliers for ≥ 3 , 2, 1 and 0 types of geometric quality criteria. A grey segment represents the fraction of residues that are not modelled. The numeric value for each fraction is indicated below the corresponding segment, with a dot representing fractions $\leq 5\%$. The upper red bar (where present) indicates the fraction of residues that have poor fit to the electron density. The numeric value is given above the bar.

Mol	Chain	Length	Quality of chain
1	A	368	<div> <div>5%</div> <div>67% 19% • 11%</div> </div>
1	B	368	<div> <div>6%</div> <div>69% 15% •• 13%</div> </div>
1	D	368	<div> <div>6%</div> <div>69% 17% • 12%</div> </div>
1	E	368	<div> <div>6%</div> <div>70% 16% • 12%</div> </div>

2 Entry composition

There are 5 unique types of molecules in this entry. The entry contains 10443 atoms, of which 0 are hydrogens and 0 are deuteriums.

In the tables below, the ZeroOcc column contains the number of atoms modelled with zero occupancy, the AltConf column contains the number of residues with at least one atom in alternate conformation and the Trace column contains the number of residues modelled with at most 2 atoms.

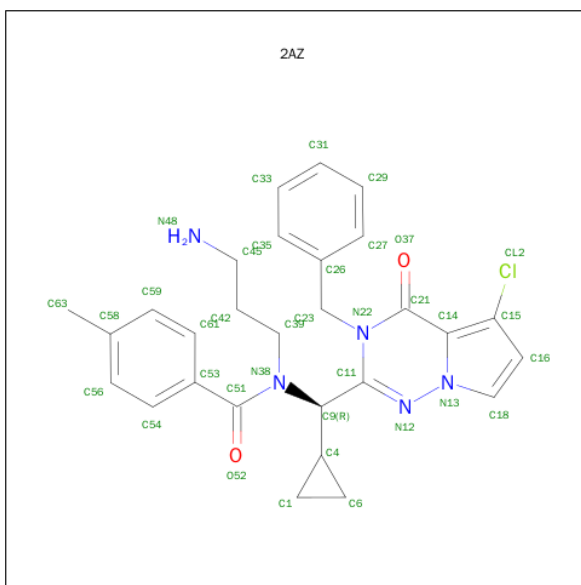
- Molecule 1 is a protein called KINESIN-RELATED MOTOR PROTEIN EG5.

Mol	Chain	Residues	Atoms					ZeroOcc	AltConf	Trace
1	A	328	Total	C	N	O	S	0	0	1
			2505	1570	435	490	10			
1	B	321	Total	C	N	O	S	0	0	1
			2467	1550	427	480	10			
1	D	325	Total	C	N	O	S	0	0	1
			2483	1561	432	480	10			
1	E	323	Total	C	N	O	S	0	0	1
			2492	1563	436	483	10			

- Molecule 2 is MAGNESIUM ION (three-letter code: MG) (formula: Mg).

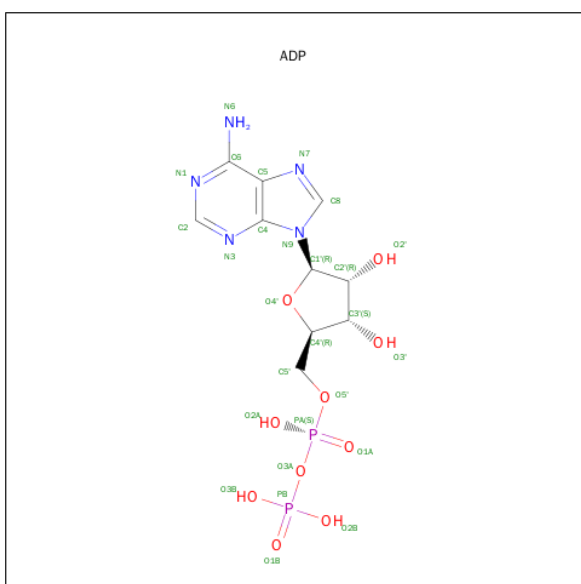
Mol	Chain	Residues	Atoms		ZeroOcc	AltConf
2	B	2	Total	Mg	0	0
			2	2		
2	A	2	Total	Mg	0	0
			2	2		
2	D	2	Total	Mg	0	0
			2	2		
2	E	2	Total	Mg	0	0
			2	2		

- Molecule 3 is N-(3-AMINOPROPYL)-N-[(R)-(3-BENZYL-5-CHLORO-4-OXO-3,4-DIHYDROPIRROLO[2,1-F][1,2,4]TRIAZIN-2-YL)(CYCLOPROPYL)METHYL]-4-METHYLBENZAMIDE (three-letter code: 2AZ) (formula: C₂₈H₃₀ClN₅O₂).



Mol	Chain	Residues	Atoms					ZeroOcc	AltConf
3	A	1	Total 36	C 28	Cl 1	N 5	O 2	0	0
3	B	1	Total 36	C 28	Cl 1	N 5	O 2	0	0
3	D	1	Total 36	C 28	Cl 1	N 5	O 2	0	0
3	E	1	Total 36	C 28	Cl 1	N 5	O 2	0	0

- Molecule 4 is ADENOSINE-5'-DIPHOSPHATE (three-letter code: ADP) (formula: $\text{C}_{10}\text{H}_{15}\text{N}_5\text{O}_{10}\text{P}_2$).



Mol	Chain	Residues	Atoms					ZeroOcc	AltConf
4	A	1	Total	C	N	O	P	0	0
			27	10	5	10	2		
4	B	1	Total	C	N	O	P	0	0
			27	10	5	10	2		
4	D	1	Total	C	N	O	P	0	0
			27	10	5	10	2		
4	E	1	Total	C	N	O	P	0	0
			27	10	5	10	2		

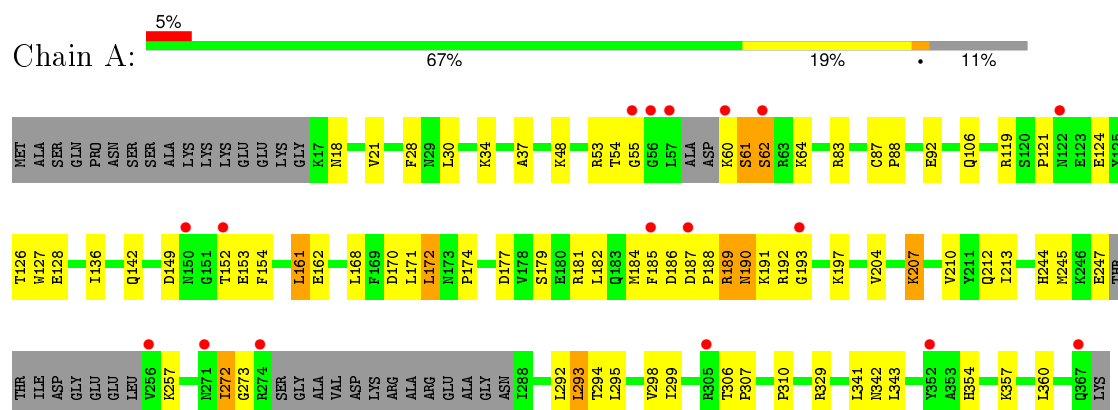
- Molecule 5 is water.

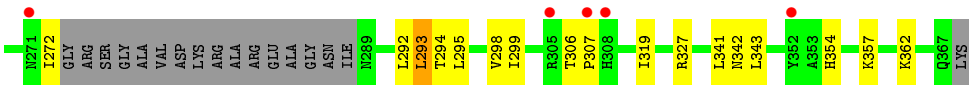
Mol	Chain	Residues	Atoms		ZeroOcc	AltConf
5	A	69	Total	O	0	0
			69	69		
5	B	44	Total	O	0	0
			44	44		
5	D	55	Total	O	0	0
			55	55		
5	E	68	Total	O	0	0
			68	68		

3 Residue-property plots

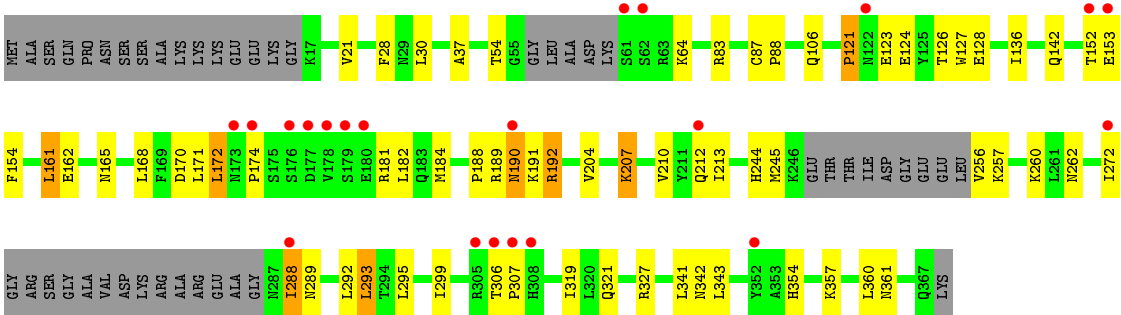
These plots are drawn for all protein, RNA and DNA chains in the entry. The first graphic for a chain summarises the proportions of errors displayed in the second graphic. The second graphic shows the sequence view annotated by issues in geometry and electron density. Residues are color-coded according to the number of geometric quality criteria for which they contain at least one outlier: green = 0, yellow = 1, orange = 2 and red = 3 or more. A red dot above a residue indicates a poor fit to the electron density ($RSRZ > 2$). Stretches of 2 or more consecutive residues without any outlier are shown as a green connector. Residues present in the sample, but not in the model, are shown in grey.

• Molecule 1: KINESIN-RELATED MOTOR PROTEIN EG5





● Molecule 1: KINESIN-RELATED MOTOR PROTEIN EG5



4 Data and refinement statistics

Property	Value	Source
Space group	P 1 21 1	Depositor
Cell constants a, b, c, α , β , γ	64.70 Å 112.60 Å 108.10 Å 90.00° 90.20° 90.00°	Depositor
Resolution (Å)	49.86 – 2.30 49.85 – 2.31	Depositor EDS
% Data completeness (in resolution range)	98.7 (49.86-2.30) 96.3 (49.85-2.31)	Depositor EDS
R_{merge}	0.07	Depositor
R_{sym}	(Not available)	Depositor
$\langle I/\sigma(I) \rangle$ ¹	5.28 (at 2.32 Å)	Xtriage
Refinement program	CNX 2005	Depositor
R, R_{free}	0.230 , 0.269 0.228 , (Not available)	Depositor DCC
R_{free} test set	No test flags present.	DCC
Wilson B-factor (Å ²)	27.4	Xtriage
Anisotropy	0.289	Xtriage
Bulk solvent k_{sol} (e/Å ³), B_{sol} (Å ²)	0.33 , 17.8	EDS
Estimated twinning fraction	0.000 for -h,-l,-k 0.000 for -h,l,k 0.167 for h,-k,-l	Xtriage
L-test for twinning ²	$\langle L \rangle = 0.48$, $\langle L^2 \rangle = 0.31$	Xtriage
Outliers	2 of 67478 reflections (0.003%)	Xtriage
F_o, F_c correlation	0.93	EDS
Total number of atoms	10443	wwPDB-VP
Average B, all atoms (Å ²)	32.0	wwPDB-VP

Xtriage's analysis on translational NCS is as follows: *The analyses of the Patterson function reveals a significant off-origin peak that is 28.23 % of the origin peak, indicating pseudo translational symmetry. The chance of finding a peak of this or larger height randomly in a structure without pseudo translational symmetry is equal to 1.9109e-03. The detected translational NCS is most likely also responsible for the elevated intensity ratio.*

¹ Intensities estimated from amplitudes.

² Theoretical values of $\langle |L| \rangle$, $\langle L^2 \rangle$ for acentric reflections are 0.5, 0.375 respectively for untwinned datasets, and 0.333, 0.2 for perfectly twinned datasets.

5 Model quality

5.1 Standard geometry

Bond lengths and bond angles in the following residue types are not validated in this section: MG, 2AZ, ADP

The Z score for a bond length (or angle) is the number of standard deviations the observed value is removed from the expected value. A bond length (or angle) with $|Z| > 5$ is considered an outlier worth inspection. RMSZ is the root-mean-square of all Z scores of the bond lengths (or angles).

Mol	Chain	Bond lengths		Bond angles	
		RMSZ	# Z > 5	RMSZ	# Z > 5
1	A	0.31	0/2542	0.49	0/3447
1	B	0.31	0/2504	0.49	0/3394
1	D	0.32	0/2520	0.50	0/3416
1	E	0.32	0/2529	0.50	0/3427
All	All	0.31	0/10095	0.50	0/13684

Chiral center outliers are detected by calculating the chiral volume of a chiral center and verifying if the center is modelled as a planar moiety or with the opposite hand. A planarity outlier is detected by checking planarity of atoms in a peptide group, atoms in a mainchain group or atoms of a sidechain that are expected to be planar.

Mol	Chain	#Chirality outliers	#Planarity outliers
1	A	0	1
1	B	0	2
1	D	0	1
1	E	0	2
All	All	0	6

There are no bond length outliers.

There are no bond angle outliers.

There are no chirality outliers.

All (6) planarity outliers are listed below:

Mol	Chain	Res	Type	Group
1	A	124	GLU	Peptide
1	B	123	GLU	Peptide
1	B	124	GLU	Peptide
1	D	124	GLU	Peptide
1	E	124	GLU	Peptide

Continued on next page...

Continued from previous page...

Mol	Chain	Res	Type	Group
1	E	191	LYS	Peptide

5.2 Too-close contacts ⓘ

In the following table, the Non-H and H(model) columns list the number of non-hydrogen atoms and hydrogen atoms in the chain respectively. The H(added) column lists the number of hydrogen atoms added and optimized by MolProbity. The Clashes column lists the number of clashes within the asymmetric unit, whereas Symm-Clashes lists symmetry related clashes.

Mol	Chain	Non-H	H(model)	H(added)	Clashes	Symm-Clashes
1	A	2505	0	2460	69	0
1	B	2467	0	2446	62	0
1	D	2483	0	2460	64	0
1	E	2492	0	2470	59	0
2	A	2	0	0	0	0
2	B	2	0	0	0	0
2	D	2	0	0	0	0
2	E	2	0	0	0	0
3	A	36	0	30	1	0
3	B	36	0	30	1	0
3	D	36	0	30	0	0
3	E	36	0	30	1	0
4	A	27	0	12	1	0
4	B	27	0	12	1	0
4	D	27	0	12	1	0
4	E	27	0	12	2	0
5	A	69	0	0	2	0
5	B	44	0	0	0	0
5	D	55	0	0	1	0
5	E	68	0	0	5	0
All	All	10443	0	10004	251	0

The all-atom clashscore is defined as the number of clashes found per 1000 atoms (including hydrogen atoms). The all-atom clashscore for this structure is 12.

All (251) close contacts within the same asymmetric unit are listed below, sorted by their clash magnitude.

Atom-1	Atom-2	Interatomic distance (Å)	Clash overlap (Å)
1:A:152:THR:HG22	1:A:153:GLU:H	1.19	1.08
1:B:152:THR:HG22	1:B:153:GLU:H	1.20	1.07

Continued on next page...

Continued from previous page...

Atom-1	Atom-2	Interatomic distance (Å)	Clash overlap (Å)
1:E:152:THR:HG22	1:E:153:GLU:H	1.20	1.04
1:D:152:THR:HG22	1:D:153:GLU:H	1.20	1.04
1:D:60:LYS:HA	1:D:61:SER:CB	1.88	1.03
1:E:192:ARG:HH12	1:E:327:ARG:NH1	1.66	0.94
1:E:192:ARG:NH1	1:E:327:ARG:HH11	1.67	0.91
1:D:256:VAL:HG12	1:D:257:LYS:H	1.37	0.88
1:D:60:LYS:HA	1:D:61:SER:HB2	1.54	0.88
1:A:83:ARG:NH1	1:B:200:GLU:OE1	2.10	0.84
1:D:60:LYS:HA	1:D:61:SER:HB3	1.62	0.80
1:D:175:SER:HB3	1:E:142:GLN:NE2	1.96	0.80
1:B:168:LEU:HD21	1:B:184:MET:HE2	1.65	0.79
1:D:152:THR:HG22	1:D:153:GLU:N	1.98	0.78
1:A:272:ILE:HG13	1:A:273:GLY:H	1.49	0.78
1:E:152:THR:HG22	1:E:153:GLU:N	1.98	0.77
1:D:245:MET:HB2	1:D:256:VAL:HG12	1.67	0.77
1:A:152:THR:HG22	1:A:153:GLU:N	1.97	0.77
1:A:272:ILE:HG13	1:A:273:GLY:N	1.99	0.77
1:B:152:THR:HG22	1:B:153:GLU:N	1.98	0.76
1:A:186:ASP:O	1:A:188:PRO:HD3	1.86	0.75
1:D:168:LEU:HD21	1:D:184:MET:HE2	1.67	0.74
1:B:60:LYS:CD	1:B:63:ARG:HH21	1.99	0.74
1:B:60:LYS:NZ	1:B:60:LYS:HB2	2.03	0.74
1:B:245:MET:O	1:B:257:LYS:HA	1.88	0.73
1:D:245:MET:O	1:D:257:LYS:HA	1.88	0.73
1:E:168:LEU:HD21	1:E:184:MET:HE2	1.68	0.73
1:D:188:PRO:HD3	1:D:195:ILE:HD11	1.71	0.72
1:D:190:ASN:HD21	1:D:193:GLY:N	1.86	0.72
1:B:190:ASN:HD22	1:B:190:ASN:C	1.92	0.72
1:E:245:MET:O	1:E:257:LYS:HA	1.88	0.72
1:E:192:ARG:HH12	1:E:327:ARG:HH11	0.83	0.72
1:D:60:LYS:CA	1:D:61:SER:CB	2.67	0.72
1:A:245:MET:O	1:A:257:LYS:HA	1.89	0.72
1:A:119:ARG:NH1	5:A:425:HOH:O	2.22	0.71
1:A:190:ASN:HD22	1:A:193:GLY:N	1.89	0.69
1:A:60:LYS:O	1:A:61:SER:HB2	1.92	0.67
1:E:162:GLU:HG3	1:E:171:LEU:CD2	2.25	0.67
1:E:192:ARG:NH1	1:E:327:ARG:HD2	2.09	0.67
1:B:60:LYS:HZ3	1:B:60:LYS:HB2	1.59	0.67
1:A:162:GLU:HG3	1:A:171:LEU:CD2	2.25	0.67
1:B:162:GLU:HG3	1:B:171:LEU:CD2	2.25	0.67
1:D:162:GLU:HG3	1:D:171:LEU:CD2	2.25	0.67

Continued on next page...

Continued from previous page...

Atom-1	Atom-2	Interatomic distance (Å)	Clash overlap (Å)
1:A:247:GLU:H	1:A:257:LYS:NZ	1.94	0.65
1:A:55:GLY:HA3	1:A:61:SER:HB3	1.77	0.65
1:B:152:THR:CG2	1:B:153:GLU:H	1.98	0.64
1:A:168:LEU:HD21	1:A:184:MET:HE2	1.79	0.64
1:D:170:ASP:HB2	1:D:182:LEU:HD11	1.82	0.62
1:E:170:ASP:HB2	1:E:182:LEU:HD11	1.82	0.61
1:D:60:LYS:CA	1:D:61:SER:HB3	2.30	0.61
1:D:256:VAL:HG12	1:D:257:LYS:N	2.13	0.61
1:B:60:LYS:HD2	1:B:63:ARG:HH21	1.65	0.61
1:B:61:SER:O	1:B:62:SER:CB	2.48	0.61
1:B:170:ASP:HB2	1:B:182:LEU:HD11	1.83	0.60
1:E:189:ARG:O	1:E:190:ASN:C	2.39	0.60
1:A:170:ASP:HB2	1:A:182:LEU:HD11	1.83	0.60
1:D:152:THR:CG2	1:D:153:GLU:H	1.98	0.59
1:A:247:GLU:H	1:A:257:LYS:HZ3	1.50	0.59
1:A:161:LEU:HD12	1:A:161:LEU:C	2.22	0.59
1:A:18:ASN:ND2	1:A:360:LEU:HD23	2.17	0.59
1:B:161:LEU:C	1:B:161:LEU:HD12	2.22	0.58
1:D:161:LEU:HD12	1:D:161:LEU:C	2.23	0.58
1:A:272:ILE:CG1	1:A:273:GLY:H	2.15	0.58
1:A:172:LEU:O	1:A:174:PRO:HD3	2.04	0.58
1:A:152:THR:HG23	1:A:154:PHE:CE2	2.39	0.58
1:B:172:LEU:O	1:B:174:PRO:HD3	2.04	0.58
1:D:126:THR:HB	1:D:128:GLU:OE1	2.03	0.58
1:D:188:PRO:HD3	1:D:195:ILE:CD1	2.32	0.58
1:D:152:THR:HG23	1:D:154:PHE:CE2	2.39	0.57
1:E:126:THR:HB	1:E:128:GLU:OE1	2.03	0.57
1:B:152:THR:HG23	1:B:154:PHE:CE2	2.40	0.57
1:A:162:GLU:HG3	1:A:171:LEU:HD23	1.86	0.57
1:B:126:THR:HB	1:B:128:GLU:OE1	2.04	0.57
1:A:126:THR:HB	1:A:128:GLU:OE1	2.04	0.57
1:E:161:LEU:C	1:E:161:LEU:HD12	2.25	0.57
1:B:162:GLU:HG3	1:B:171:LEU:HD23	1.87	0.56
1:E:204:VAL:HG11	1:E:210:VAL:CG2	2.35	0.56
1:D:204:VAL:HG11	1:D:210:VAL:CG2	2.35	0.56
1:E:152:THR:HG23	1:E:154:PHE:CE2	2.40	0.56
1:A:185:PHE:CD2	1:A:197:LYS:HE2	2.40	0.56
1:B:190:ASN:O	1:B:191:LYS:CB	2.54	0.56
1:D:172:LEU:O	1:D:174:PRO:HD3	2.04	0.56
1:A:48:LYS:HE2	1:B:206:ASN:ND2	2.21	0.56
1:E:162:GLU:HG3	1:E:171:LEU:HD23	1.87	0.56

Continued on next page...

Continued from previous page...

Atom-1	Atom-2	Interatomic distance (Å)	Clash overlap (Å)
1:A:190:ASN:C	1:A:192:ARG:H	2.07	0.56
1:E:152:THR:HG22	5:E:414:HOH:O	2.05	0.56
1:A:187:ASP:HB3	1:A:190:ASN:HB3	1.87	0.56
1:A:190:ASN:O	1:A:192:ARG:N	2.38	0.55
1:E:172:LEU:O	1:E:174:PRO:HD3	2.05	0.55
1:D:162:GLU:HG3	1:D:171:LEU:HD23	1.88	0.55
1:D:175:SER:HB3	1:E:142:GLN:HE21	1.71	0.55
1:A:188:PRO:O	1:A:189:ARG:CB	2.55	0.55
1:A:204:VAL:HG11	1:A:210:VAL:CG2	2.37	0.54
1:D:200:GLU:OE1	1:E:83:ARG:NH1	2.41	0.54
1:B:187:ASP:HB3	1:B:190:ASN:HB3	1.89	0.54
1:A:61:SER:O	1:A:62:SER:CB	2.56	0.54
4:D:372:ADP:H2'	4:D:372:ADP:O5'	2.07	0.54
1:B:204:VAL:HG11	1:B:210:VAL:CG2	2.38	0.54
1:B:60:LYS:HE3	1:B:63:ARG:NH2	2.23	0.53
1:A:185:PHE:HD2	1:A:197:LYS:HE2	1.73	0.53
1:A:295:LEU:O	1:A:299:ILE:HG12	2.07	0.53
1:A:92:GLU:HG3	1:A:329:ARG:NH1	2.23	0.53
1:B:295:LEU:O	1:B:299:ILE:HG12	2.08	0.53
1:D:295:LEU:O	1:D:299:ILE:HG12	2.09	0.53
1:A:168:LEU:HD21	1:A:184:MET:CE	2.40	0.52
1:B:127:TRP:HZ2	1:B:207:LYS:HG2	1.75	0.52
1:B:60:LYS:HE3	1:B:63:ARG:HH21	1.75	0.52
1:B:168:LEU:HD21	1:B:184:MET:CE	2.40	0.51
1:D:204:VAL:HG11	1:D:210:VAL:HG23	1.93	0.51
4:B:372:ADP:O5'	4:B:372:ADP:H2'	2.10	0.51
1:E:168:LEU:HD21	1:E:184:MET:CE	2.39	0.51
1:E:295:LEU:O	1:E:299:ILE:HG12	2.10	0.51
1:E:244:HIS:HD2	5:E:418:HOH:O	1.94	0.51
1:E:204:VAL:HG11	1:E:210:VAL:HG23	1.93	0.51
1:B:106:GLN:HE22	1:B:342:ASN:ND2	2.09	0.51
4:E:372:ADP:O5'	4:E:372:ADP:H2'	2.09	0.51
1:D:245:MET:SD	1:D:256:VAL:HG13	2.50	0.51
4:A:372:ADP:O5'	4:A:372:ADP:H2'	2.11	0.51
1:B:60:LYS:CE	1:B:63:ARG:HH21	2.24	0.50
1:A:127:TRP:HZ2	1:A:207:LYS:HG2	1.76	0.50
1:E:121:PRO:C	1:E:123:GLU:H	2.14	0.50
1:D:244:HIS:HD2	5:D:415:HOH:O	1.94	0.50
1:A:187:ASP:HB3	1:A:190:ASN:CB	2.41	0.50
1:B:354:HIS:O	1:B:357:LYS:HG2	2.11	0.50
1:A:152:THR:HG23	1:A:154:PHE:HE2	1.77	0.50

Continued on next page...

Continued from previous page...

Atom-1	Atom-2	Interatomic distance (Å)	Clash overlap (Å)
1:E:121:PRO:O	1:E:123:GLU:N	2.43	0.49
1:B:190:ASN:ND2	1:B:190:ASN:C	2.64	0.49
1:B:38:HIS:CE1	1:B:57:LEU:HB2	2.48	0.49
1:D:152:THR:HG23	1:D:154:PHE:HE2	1.77	0.49
1:A:34:LYS:HG3	4:E:372:ADP:C2	2.47	0.49
1:A:190:ASN:HD22	1:A:193:GLY:H	1.59	0.49
1:D:168:LEU:HD21	1:D:184:MET:CE	2.39	0.49
1:E:188:PRO:HG2	1:E:189:ARG:NH1	2.27	0.49
1:D:354:HIS:O	1:D:357:LYS:HG2	2.12	0.49
1:E:354:HIS:O	1:E:357:LYS:HG2	2.12	0.49
1:A:106:GLN:HE22	1:A:342:ASN:ND2	2.11	0.49
1:A:204:VAL:HG11	1:A:210:VAL:HG23	1.95	0.49
1:A:354:HIS:O	1:A:357:LYS:HG2	2.12	0.49
1:B:192:ARG:NH2	1:B:322:ASP:OD1	2.46	0.49
1:B:152:THR:HG23	1:B:154:PHE:HE2	1.78	0.49
1:D:306:THR:HB	1:D:307:PRO:HD2	1.95	0.49
1:E:192:ARG:HB2	1:E:321:GLN:CD	2.34	0.48
1:B:306:THR:HB	1:B:307:PRO:HD2	1.95	0.48
1:E:306:THR:HB	1:E:307:PRO:HD2	1.95	0.48
1:B:55:GLY:HA3	1:B:61:SER:CB	2.43	0.48
1:A:177:ASP:OD2	1:A:179:SER:HB3	2.14	0.48
1:A:306:THR:HB	1:A:307:PRO:HD2	1.95	0.48
1:B:54:THR:HG21	1:B:64:LYS:HG3	1.95	0.48
1:A:149:ASP:OD2	1:B:177:ASP:HB2	2.14	0.48
1:D:54:THR:HG21	1:D:64:LYS:HG3	1.95	0.47
1:B:204:VAL:HG11	1:B:210:VAL:HG23	1.97	0.47
1:E:152:THR:HG23	1:E:154:PHE:HE2	1.79	0.47
1:E:127:TRP:HZ2	1:E:207:LYS:HG2	1.79	0.47
1:A:54:THR:HG21	1:A:64:LYS:HG3	1.95	0.47
1:E:212:GLN:HG3	1:E:213:ILE:N	2.28	0.47
1:D:127:TRP:HZ2	1:D:207:LYS:HG2	1.79	0.47
1:B:60:LYS:HD2	1:B:63:ARG:HE	1.80	0.47
1:A:60:LYS:O	1:A:61:SER:CB	2.63	0.47
1:A:142:GLN:CD	1:B:175:SER:HB3	2.34	0.46
1:D:21:VAL:CG2	1:D:357:LYS:HB3	2.46	0.46
1:E:54:THR:HG21	1:E:64:LYS:HG3	1.96	0.46
1:E:106:GLN:HE22	1:E:342:ASN:ND2	2.13	0.46
1:D:60:LYS:HE2	1:D:62:SER:HB2	1.97	0.46
1:D:187:ASP:CB	1:D:190:ASN:HD22	2.29	0.46
1:D:106:GLN:HE22	1:D:342:ASN:ND2	2.13	0.46
1:A:152:THR:CG2	1:A:153:GLU:N	2.67	0.46

Continued on next page...

Continued from previous page...

Atom-1	Atom-2	Interatomic distance (Å)	Clash overlap (Å)
1:B:21:VAL:CG2	1:B:357:LYS:HB3	2.45	0.46
1:A:53:ARG:HD2	1:A:60:LYS:N	2.31	0.45
1:A:189:ARG:O	1:A:190:ASN:HB2	2.16	0.45
1:B:121:PRO:C	1:B:123:GLU:H	2.20	0.45
1:D:256:VAL:O	1:D:257:LYS:HB3	2.16	0.45
1:B:127:TRP:CZ2	1:B:207:LYS:HG2	2.52	0.45
1:B:212:GLN:HG3	1:B:213:ILE:N	2.31	0.45
1:A:212:GLN:HG3	1:A:213:ILE:N	2.31	0.45
1:E:288:ILE:HA	1:E:289:ASN:HA	1.46	0.44
1:E:87:CYS:HB2	1:E:88:PRO:HD3	1.98	0.44
1:E:165:ASN:HA	1:E:288:ILE:HG23	1.98	0.44
1:D:121:PRO:O	1:D:122:ASN:C	2.55	0.44
1:E:172:LEU:HA	1:E:172:LEU:HD12	1.75	0.44
1:E:152:THR:CG2	1:E:153:GLU:H	1.98	0.44
1:B:60:LYS:CB	1:B:60:LYS:NZ	2.76	0.44
1:B:172:LEU:HD12	1:B:172:LEU:HA	1.77	0.44
1:D:212:GLN:HG3	1:D:213:ILE:N	2.31	0.44
1:E:207:LYS:HB3	5:E:395:HOH:O	2.18	0.44
1:E:21:VAL:CG2	1:E:357:LYS:HB3	2.48	0.44
1:B:61:SER:O	1:B:62:SER:OG	2.31	0.44
1:E:204:VAL:HG11	1:E:210:VAL:HG22	2.00	0.44
1:D:204:VAL:HG11	1:D:210:VAL:HG22	1.99	0.44
1:B:87:CYS:HB2	1:B:88:PRO:HD3	1.99	0.44
1:E:136:ILE:HD13	3:E:371:2AZ:CL2	2.55	0.44
1:B:136:ILE:HD13	3:B:371:2AZ:CL2	2.54	0.44
1:D:87:CYS:HB2	1:D:88:PRO:HD3	1.99	0.44
1:E:272:ILE:HG22	1:E:293:LEU:HD22	1.99	0.43
1:E:256:VAL:O	1:E:257:LYS:HB3	2.18	0.43
1:A:127:TRP:CZ2	1:A:207:LYS:HG2	2.53	0.43
1:B:184:MET:HE3	1:B:319:ILE:HD11	2.01	0.43
1:D:256:VAL:O	1:D:257:LYS:CB	2.65	0.43
1:A:207:LYS:O	1:A:210:VAL:HB	2.18	0.43
1:A:272:ILE:HG22	1:A:293:LEU:HD22	2.00	0.43
1:D:190:ASN:HD21	1:D:193:GLY:CA	2.31	0.43
1:B:272:ILE:HG22	1:B:293:LEU:HD22	2.00	0.43
1:A:18:ASN:HD22	1:A:360:LEU:HD23	1.83	0.43
1:A:87:CYS:HB2	1:A:88:PRO:HD3	2.01	0.43
1:E:37:ALA:HB2	1:E:341:LEU:HD22	2.01	0.43
1:A:172:LEU:HA	1:A:172:LEU:HD12	1.76	0.42
1:B:207:LYS:O	1:B:210:VAL:HB	2.19	0.42
1:E:207:LYS:CB	5:E:395:HOH:O	2.67	0.42

Continued on next page...

Continued from previous page...

Atom-1	Atom-2	Interatomic distance (Å)	Clash overlap (Å)
1:B:59:ASP:O	1:B:61:SER:N	2.52	0.42
1:E:207:LYS:O	1:E:210:VAL:HB	2.20	0.42
1:D:153:GLU:OE2	1:D:153:GLU:HA	2.20	0.42
1:D:152:THR:CG2	1:D:153:GLU:N	2.68	0.42
1:B:21:VAL:HG21	1:B:357:LYS:HB3	2.02	0.42
1:A:153:GLU:OE2	1:A:153:GLU:HA	2.20	0.42
1:D:244:HIS:HA	1:D:257:LYS:O	2.20	0.42
1:B:154:PHE:HA	1:B:244:HIS:O	2.20	0.42
1:A:21:VAL:CG2	1:A:357:LYS:HB3	2.49	0.42
1:B:294:THR:O	1:B:298:VAL:HG23	2.20	0.42
1:D:37:ALA:HB2	1:D:341:LEU:HD22	2.01	0.42
1:E:184:MET:HE3	1:E:319:ILE:HD11	2.02	0.42
1:D:327:ARG:HA	1:D:362:LYS:O	2.20	0.42
1:A:310:PRO:HA	5:A:437:HOH:O	2.19	0.42
1:A:154:PHE:HA	1:A:244:HIS:O	2.20	0.41
1:B:244:HIS:HA	1:B:257:LYS:O	2.20	0.41
1:B:204:VAL:HG11	1:B:210:VAL:HG22	2.01	0.41
1:A:294:THR:O	1:A:298:VAL:HG23	2.21	0.41
1:A:244:HIS:HA	1:A:257:LYS:O	2.20	0.41
1:D:21:VAL:HG21	1:D:357:LYS:HB3	2.02	0.41
1:D:294:THR:O	1:D:298:VAL:HG23	2.19	0.41
1:A:204:VAL:HG11	1:A:210:VAL:HG22	2.01	0.41
1:E:360:LEU:HD13	1:E:361:ASN:O	2.21	0.41
1:E:154:PHE:HA	1:E:244:HIS:O	2.20	0.41
1:D:184:MET:HE3	1:D:319:ILE:HD11	2.03	0.41
1:A:184:MET:HB3	1:A:184:MET:HE2	1.90	0.41
1:D:272:ILE:HG22	1:D:293:LEU:HD22	2.02	0.41
1:E:244:HIS:CD2	5:E:418:HOH:O	2.72	0.41
1:E:192:ARG:HH11	1:E:327:ARG:HD2	1.85	0.41
1:B:190:ASN:ND2	1:B:192:ARG:H	2.19	0.41
1:D:207:LYS:O	1:D:210:VAL:HB	2.21	0.41
1:D:172:LEU:HD12	1:D:172:LEU:HA	1.73	0.41
1:A:136:ILE:HD13	3:A:371:2AZ:CL2	2.58	0.41
1:B:153:GLU:OE2	1:B:153:GLU:HA	2.21	0.41
1:D:245:MET:HB2	1:D:256:VAL:CG1	2.44	0.41
1:E:260:LYS:HE2	1:E:262:ASN:HD21	1.86	0.41
1:A:37:ALA:HB2	1:A:341:LEU:HD22	2.02	0.41
1:D:237:SER:HB3	1:D:265:ASP:HB3	2.02	0.41
1:E:152:THR:CG2	1:E:153:GLU:N	2.68	0.41
1:E:244:HIS:HA	1:E:257:LYS:O	2.21	0.40
1:D:127:TRP:CZ2	1:D:207:LYS:HG2	2.55	0.40

Continued on next page...

Continued from previous page...

Atom-1	Atom-2	Interatomic distance (Å)	Clash overlap (Å)
1:E:127:TRP:CZ2	1:E:207:LYS:HG2	2.55	0.40
1:D:173:ASN:ND2	1:D:176:SER:HB2	2.36	0.40
1:D:178:VAL:HG21	1:D:224:ALA:HB2	2.04	0.40

There are no symmetry-related clashes.

5.3 Torsion angles [i](#)

5.3.1 Protein backbone [i](#)

In the following table, the Percentiles column shows the percent Ramachandran outliers of the chain as a percentile score with respect to all X-ray entries followed by that with respect to entries of similar resolution.

The Analysed column shows the number of residues for which the backbone conformation was analysed, and the total number of residues.

Mol	Chain	Analysed	Favoured	Allowed	Outliers	Percentiles	
1	A	320/368 (87%)	306 (96%)	7 (2%)	7 (2%)	8	6
1	B	315/368 (86%)	303 (96%)	7 (2%)	5 (2%)	12	11
1	D	317/368 (86%)	304 (96%)	8 (2%)	5 (2%)	12	11
1	E	315/368 (86%)	304 (96%)	9 (3%)	2 (1%)	30	36
All	All	1267/1472 (86%)	1217 (96%)	31 (2%)	19 (2%)	13	12

All (19) Ramachandran outliers are listed below:

Mol	Chain	Res	Type
1	A	61	SER
1	A	62	SER
1	B	60	LYS
1	B	62	SER
1	B	191	LYS
1	D	61	SER
1	D	122	ASN
1	E	121	PRO
1	A	121	PRO
1	A	189	ARG
1	A	190	ASN
1	B	121	PRO

Continued on next page...

Continued from previous page...

Mol	Chain	Res	Type
1	D	121	PRO
1	E	190	ASN
1	A	191	LYS
1	A	272	ILE
1	D	190	ASN
1	D	257	LYS
1	B	190	ASN

5.3.2 Protein sidechains ⓘ

In the following table, the Percentiles column shows the percent sidechain outliers of the chain as a percentile score with respect to all X-ray entries followed by that with respect to entries of similar resolution.

The Analysed column shows the number of residues for which the sidechain conformation was analysed, and the total number of residues.

Mol	Chain	Analysed	Rotameric	Outliers	Percentiles	
1	A	274/322 (85%)	265 (97%)	9 (3%)	45	61
1	B	271/322 (84%)	259 (96%)	12 (4%)	35	46
1	D	272/322 (84%)	263 (97%)	9 (3%)	45	61
1	E	275/322 (85%)	264 (96%)	11 (4%)	38	52
All	All	1092/1288 (85%)	1051 (96%)	41 (4%)	40	54

All (41) residues with a non-rotameric sidechain are listed below:

Mol	Chain	Res	Type
1	A	28	PHE
1	A	30	LEU
1	A	161	LEU
1	A	172	LEU
1	A	181	ARG
1	A	207	LYS
1	A	292	LEU
1	A	293	LEU
1	A	343	LEU
1	B	28	PHE
1	B	30	LEU
1	B	60	LYS
1	B	161	LEU
1	B	172	LEU

Continued on next page...

Continued from previous page...

Mol	Chain	Res	Type
1	B	181	ARG
1	B	190	ASN
1	B	192	ARG
1	B	207	LYS
1	B	292	LEU
1	B	293	LEU
1	B	343	LEU
1	D	28	PHE
1	D	30	LEU
1	D	161	LEU
1	D	172	LEU
1	D	181	ARG
1	D	207	LYS
1	D	292	LEU
1	D	293	LEU
1	D	343	LEU
1	E	28	PHE
1	E	30	LEU
1	E	161	LEU
1	E	172	LEU
1	E	181	ARG
1	E	192	ARG
1	E	207	LYS
1	E	288	ILE
1	E	292	LEU
1	E	293	LEU
1	E	343	LEU

Some sidechains can be flipped to improve hydrogen bonding and reduce clashes. All (26) such sidechains are listed below:

Mol	Chain	Res	Type
1	A	18	ASN
1	A	190	ASN
1	A	205	HIS
1	A	229	ASN
1	A	262	ASN
1	A	321	GLN
1	A	342	ASN
1	A	354	HIS
1	B	190	ASN
1	B	205	HIS
1	B	262	ASN

Continued on next page...

Continued from previous page...

Mol	Chain	Res	Type
1	B	321	GLN
1	B	342	ASN
1	D	190	ASN
1	D	205	HIS
1	D	229	ASN
1	D	244	HIS
1	D	262	ASN
1	D	321	GLN
1	D	342	ASN
1	E	142	GLN
1	E	205	HIS
1	E	229	ASN
1	E	262	ASN
1	E	321	GLN
1	E	342	ASN

5.3.3 RNA [i](#)

There are no RNA molecules in this entry.

5.4 Non-standard residues in protein, DNA, RNA chains [i](#)

There are no non-standard protein/DNA/RNA residues in this entry.

5.5 Carbohydrates [i](#)

There are no carbohydrates in this entry.

5.6 Ligand geometry [i](#)

Of 16 ligands modelled in this entry, 8 are monoatomic - leaving 8 for Mogul analysis.

In the following table, the Counts columns list the number of bonds (or angles) for which Mogul statistics could be retrieved, the number of bonds (or angles) that are observed in the model and the number of bonds (or angles) that are defined in the chemical component dictionary. The Link column lists molecule types, if any, to which the group is linked. The Z score for a bond length (or angle) is the number of standard deviations the observed value is removed from the expected value. A bond length (or angle) with $|Z| > 2$ is considered an outlier worth inspection. RMSZ is the root-mean-square of all Z scores of the bond lengths (or angles).

Mol	Type	Chain	Res	Link	Bond lengths			Bond angles		
					Counts	RMSZ	# Z > 2	Counts	RMSZ	# Z > 2
3	2AZ	A	371	-	34,40,40	1.73	7 (20%)	35,57,57	2.00	4 (11%)
4	ADP	A	372	2	22,29,29	1.51	3 (13%)	27,45,45	3.38	6 (22%)
3	2AZ	B	371	-	34,40,40	1.71	6 (17%)	35,57,57	1.99	5 (14%)
4	ADP	B	372	2	22,29,29	1.42	3 (13%)	27,45,45	3.31	5 (18%)
3	2AZ	D	371	-	34,40,40	1.70	6 (17%)	35,57,57	1.96	5 (14%)
4	ADP	D	372	2	22,29,29	1.33	2 (9%)	27,45,45	3.17	5 (18%)
3	2AZ	E	371	-	34,40,40	1.66	7 (20%)	35,57,57	1.96	5 (14%)
4	ADP	E	372	2	22,29,29	1.38	2 (9%)	27,45,45	3.08	5 (18%)

In the following table, the Chirals column lists the number of chiral outliers, the number of chiral centers analysed, the number of these observed in the model and the number defined in the chemical component dictionary. Similar counts are reported in the Torsion and Rings columns. '-' means no outliers of that kind were identified.

Mol	Type	Chain	Res	Link	Chirals	Torsions	Rings
3	2AZ	A	371	-	-	0/24/30/30	0/4/5/5
4	ADP	A	372	2	-	0/12/32/32	0/3/3/3
3	2AZ	B	371	-	-	0/24/30/30	0/4/5/5
4	ADP	B	372	2	-	0/12/32/32	0/3/3/3
3	2AZ	D	371	-	-	0/24/30/30	0/4/5/5
4	ADP	D	372	2	-	0/12/32/32	0/3/3/3
3	2AZ	E	371	-	-	0/24/30/30	0/4/5/5
4	ADP	E	372	2	-	0/12/32/32	0/3/3/3

All (36) bond length outliers are listed below:

Mol	Chain	Res	Type	Atoms	Z	Observed(Å)	Ideal(Å)
4	A	372	ADP	PB-O3B	-3.01	1.43	1.54
4	B	372	ADP	PB-O3B	-2.25	1.46	1.54
3	B	371	2AZ	C23-N22	-2.05	1.44	1.48
3	A	371	2AZ	C15-CL2	-2.04	1.67	1.74
3	E	371	2AZ	C23-N22	-2.04	1.44	1.48
3	E	371	2AZ	C61-C53	2.17	1.43	1.39
3	D	371	2AZ	C61-C53	2.26	1.43	1.39
3	A	371	2AZ	C61-C53	2.29	1.43	1.39
3	A	371	2AZ	C39-N38	2.52	1.50	1.46
4	D	372	ADP	C4-N3	2.60	1.39	1.35
3	E	371	2AZ	C39-N38	2.64	1.50	1.46
4	B	372	ADP	C4-N3	2.66	1.39	1.35
4	A	372	ADP	C4-N3	2.86	1.39	1.35

Continued on next page...

Continued from previous page...

Mol	Chain	Res	Type	Atoms	Z	Observed(Å)	Ideal(Å)
3	A	371	2AZ	C21-C14	2.95	1.46	1.41
3	D	371	2AZ	C21-C14	2.99	1.46	1.41
4	E	372	ADP	C4-N3	3.02	1.40	1.35
3	B	371	2AZ	C39-N38	3.09	1.51	1.46
3	E	371	2AZ	C21-C14	3.10	1.46	1.41
3	D	371	2AZ	C39-N38	3.17	1.51	1.46
3	B	371	2AZ	C21-C14	3.21	1.47	1.41
4	D	372	ADP	C2-N3	3.30	1.38	1.32
3	A	371	2AZ	C51-N38	3.33	1.40	1.35
4	A	372	ADP	C2-N3	3.46	1.38	1.32
3	B	371	2AZ	C51-N38	3.48	1.41	1.35
4	E	372	ADP	C2-N3	3.48	1.38	1.32
3	D	371	2AZ	C11-C9	3.58	1.56	1.50
4	B	372	ADP	C2-N3	3.73	1.38	1.32
3	E	371	2AZ	C11-N12	3.75	1.37	1.31
3	D	371	2AZ	C51-N38	3.80	1.41	1.35
3	B	371	2AZ	C11-N12	3.88	1.37	1.31
3	E	371	2AZ	C51-N38	3.89	1.41	1.35
3	E	371	2AZ	C11-C9	3.90	1.57	1.50
3	D	371	2AZ	C11-N12	4.04	1.37	1.31
3	A	371	2AZ	C11-N12	4.25	1.38	1.31
3	B	371	2AZ	C11-C9	4.40	1.57	1.50
3	A	371	2AZ	C11-C9	4.46	1.57	1.50

All (40) bond angle outliers are listed below:

Mol	Chain	Res	Type	Atoms	Z	Observed(°)	Ideal(°)
4	A	372	ADP	N3-C2-N1	-15.99	116.65	128.89
4	B	372	ADP	N3-C2-N1	-15.54	117.00	128.89
4	D	372	ADP	N3-C2-N1	-14.82	117.54	128.89
4	E	372	ADP	N3-C2-N1	-14.30	117.94	128.89
3	B	371	2AZ	C14-C21-N22	-9.18	115.11	120.52
3	A	371	2AZ	C14-C21-N22	-8.92	115.26	120.52
3	D	371	2AZ	C14-C21-N22	-8.73	115.38	120.52
3	E	371	2AZ	C14-C21-N22	-8.72	115.38	120.52
4	D	372	ADP	C2'-C3'-C4'	-4.28	93.82	102.61
4	B	372	ADP	C2'-C3'-C4'	-4.17	94.03	102.61
4	E	372	ADP	C2'-C3'-C4'	-4.04	94.30	102.61
4	A	372	ADP	C2'-C3'-C4'	-3.80	94.81	102.61
3	E	371	2AZ	C16-C18-N13	-3.02	104.58	106.85
3	D	371	2AZ	C16-C18-N13	-2.90	104.67	106.85
3	B	371	2AZ	C16-C18-N13	-2.70	104.82	106.85

Continued on next page...

Continued from previous page...

Mol	Chain	Res	Type	Atoms	Z	Observed(°)	Ideal(°)
3	A	371	2AZ	C16-C18-N13	-2.64	104.86	106.85
4	E	372	ADP	C4-C5-N7	-2.28	107.38	109.48
4	B	372	ADP	C4-C5-N7	-2.16	107.49	109.48
3	B	371	2AZ	C1-C4-C9	-2.13	115.44	119.26
4	A	372	ADP	C4-C5-N7	-2.07	107.57	109.48
4	A	372	ADP	N6-C6-N1	-2.00	114.90	119.20
3	E	371	2AZ	C53-C51-N38	2.02	121.80	118.73
4	D	372	ADP	O3A-PA-O5'	2.05	108.38	102.94
3	D	371	2AZ	C53-C51-N38	2.05	121.84	118.73
4	D	372	ADP	O4'-C1'-N9	2.09	112.47	108.10
4	D	372	ADP	C1'-N9-C4	2.14	130.16	126.94
4	B	372	ADP	C2-N1-C6	2.16	122.63	118.77
4	E	372	ADP	C2-N1-C6	2.18	122.67	118.77
4	A	372	ADP	O4'-C1'-N9	2.21	112.72	108.10
4	E	372	ADP	O4'-C1'-N9	2.27	112.84	108.10
4	B	372	ADP	O4'-C1'-N9	2.53	113.39	108.10
4	A	372	ADP	C2-N1-C6	2.66	123.53	118.77
3	E	371	2AZ	C18-C16-C15	2.77	109.44	105.98
3	B	371	2AZ	C18-C16-C15	2.79	109.47	105.98
3	D	371	2AZ	C18-C16-C15	2.82	109.51	105.98
3	A	371	2AZ	C18-C16-C15	3.02	109.75	105.98
3	D	371	2AZ	C42-C39-N38	4.44	119.88	113.52
3	B	371	2AZ	C42-C39-N38	4.66	120.20	113.52
3	E	371	2AZ	C42-C39-N38	4.76	120.34	113.52
3	A	371	2AZ	C42-C39-N38	5.02	120.72	113.52

There are no chirality outliers.

There are no torsion outliers.

There are no ring outliers.

7 monomers are involved in 8 short contacts:

Mol	Chain	Res	Type	Clashes	Symm-Clashes
3	A	371	2AZ	1	0
4	A	372	ADP	1	0
3	B	371	2AZ	1	0
4	B	372	ADP	1	0
4	D	372	ADP	1	0
3	E	371	2AZ	1	0
4	E	372	ADP	2	0

5.7 Other polymers

There are no such residues in this entry.

5.8 Polymer linkage issues

There are no chain breaks in this entry.

6 Fit of model and data ⓘ

6.1 Protein, DNA and RNA chains ⓘ

In the following table, the column labelled ‘#RSRZ> 2’ contains the number (and percentage) of RSRZ outliers, followed by percent RSRZ outliers for the chain as percentile scores relative to all X-ray entries and entries of similar resolution. The OWAB column contains the minimum, median, 95th percentile and maximum values of the occupancy-weighted average B-factor per residue. The column labelled ‘Q< 0.9’ lists the number of (and percentage) of residues with an average occupancy less than 0.9.

Mol	Chain	Analysed	<RSRZ>	#RSRZ>2	OWAB(Å ²)	Q<0.9
1	A	328/368 (89%)	0.20	17 (5%) 31 39	13, 30, 61, 70	0
1	B	321/368 (87%)	0.22	22 (6%) 20 27	12, 32, 60, 72	0
1	D	325/368 (88%)	0.20	23 (7%) 19 26	13, 31, 61, 73	0
1	E	323/368 (87%)	0.31	21 (6%) 22 30	13, 30, 57, 69	0
All	All	1297/1472 (88%)	0.23	83 (6%) 23 31	12, 31, 60, 73	0

All (83) RSRZ outliers are listed below:

Mol	Chain	Res	Type	RSRZ
1	E	178	VAL	12.1
1	D	178	VAL	10.7
1	D	175	SER	8.6
1	B	58	ALA	7.6
1	D	179	SER	6.1
1	B	308	HIS	6.0
1	D	56	GLY	5.9
1	E	152	THR	5.3
1	D	180	GLU	5.3
1	E	179	SER	4.9
1	A	256	VAL	4.8
1	A	185	PHE	4.8
1	A	56	GLY	4.8
1	D	308	HIS	4.8
1	B	122	ASN	4.5
1	B	57	LEU	4.4
1	E	122	ASN	4.4
1	A	57	LEU	4.4
1	A	274	ARG	4.3
1	B	307	PRO	4.2
1	E	308	HIS	4.2

Continued on next page...

Continued from previous page...

Mol	Chain	Res	Type	RSRZ
1	D	185	PHE	4.2
1	D	174	PRO	4.2
1	E	190	ASN	4.2
1	B	272	ILE	4.0
1	D	307	PRO	3.9
1	B	60	LYS	3.9
1	E	272	ILE	3.8
1	A	305	ARG	3.8
1	B	352	TYR	3.6
1	D	152	THR	3.6
1	E	61	SER	3.6
1	B	150	ASN	3.5
1	E	352	TYR	3.5
1	A	152	THR	3.4
1	A	187	ASP	3.4
1	D	176	SER	3.4
1	E	174	PRO	3.3
1	D	181	ARG	3.3
1	E	176	SER	3.2
1	B	59	ASP	3.2
1	A	122	ASN	3.2
1	D	150	ASN	3.2
1	E	180	GLU	3.2
1	B	303	VAL	3.1
1	B	55	GLY	3.1
1	A	193	GLY	3.0
1	D	256	VAL	3.0
1	D	271	ASN	2.9
1	D	122	ASN	2.9
1	A	55	GLY	2.8
1	A	352	TYR	2.8
1	A	367	GLN	2.7
1	E	305	ARG	2.6
1	D	189	ARG	2.6
1	E	173	ASN	2.6
1	A	62	SER	2.6
1	B	61	SER	2.6
1	B	256	VAL	2.6
1	A	150	ASN	2.5
1	B	305	ARG	2.5
1	B	95	MET	2.5
1	D	352	TYR	2.4

Continued on next page...

Continued from previous page...

Mol	Chain	Res	Type	RSRZ
1	E	177	ASP	2.4
1	E	307	PRO	2.4
1	B	293	LEU	2.4
1	D	194	VAL	2.4
1	B	56	GLY	2.4
1	D	193	GLY	2.4
1	D	192	ARG	2.4
1	B	271	ASN	2.3
1	A	271	ASN	2.3
1	D	305	ARG	2.3
1	E	288	ILE	2.3
1	E	212	GLN	2.2
1	B	62	SER	2.2
1	E	153	GLU	2.2
1	E	306	THR	2.2
1	B	178	VAL	2.2
1	A	60	LYS	2.1
1	E	62	SER	2.1
1	D	195	ILE	2.0
1	B	327	ARG	2.0

6.2 Non-standard residues in protein, DNA, RNA chains [i](#)

There are no non-standard protein/DNA/RNA residues in this entry.

6.3 Carbohydrates [i](#)

There are no carbohydrates in this entry.

6.4 Ligands [i](#)

In the following table, the Atoms column lists the number of modelled atoms in the group and the number defined in the chemical component dictionary. LLDF column lists the quality of electron density of the group with respect to its neighbouring residues in protein, DNA or RNA chains. The B-factors column lists the minimum, median, 95th percentile and maximum values of B factors of atoms in the group. The column labelled 'Q< 0.9' lists the number of atoms with occupancy less than 0.9.

Mol	Type	Chain	Res	Atoms	RSCC	RSR	LLDF	B-factors(Å ²)	Q<0.9
3	2AZ	B	371	36/36	0.90	0.15	1.20	18,25,34,34	0

Continued on next page...

Continued from previous page...

Mol	Type	Chain	Res	Atoms	RSCC	RSR	LLDF	B-factors(\AA^2)	Q<0.9
2	MG	D	370	1/1	0.84	0.14	0.89	41,41,41,41	0
3	2AZ	D	371	36/36	0.92	0.15	0.86	16,22,34,35	0
3	2AZ	E	371	36/36	0.92	0.14	0.43	16,23,33,33	0
3	2AZ	A	371	36/36	0.91	0.14	0.16	19,25,35,36	0
2	MG	B	370	1/1	0.88	0.13	-0.09	51,51,51,51	0
2	MG	A	370	1/1	0.94	0.12	-0.11	41,41,41,41	0
4	ADP	B	372	27/27	0.98	0.10	-0.16	14,15,18,20	0
4	ADP	D	372	27/27	0.98	0.11	-0.25	13,15,16,21	0
4	ADP	A	372	27/27	0.98	0.10	-0.42	11,14,17,19	0
4	ADP	E	372	27/27	0.98	0.10	-0.56	12,16,18,20	0
2	MG	E	370	1/1	0.91	0.08	-1.36	39,39,39,39	0
2	MG	D	369	1/1	0.98	0.16	-	24,24,24,24	0
2	MG	A	369	1/1	0.97	0.14	-	19,19,19,19	0
2	MG	B	369	1/1	0.98	0.16	-	23,23,23,23	0
2	MG	E	369	1/1	0.98	0.14	-	22,22,22,22	0

6.5 Other polymers [i](#)

There are no such residues in this entry.