



wwPDB X-ray Structure Validation Summary Report ⓘ

Feb 1, 2016 – 02:21 AM GMT

PDB ID : 2GS7
Title : Crystal Structure of the inactive EGFR kinase domain in complex with AMP-PNP
Authors : Zhang, X.; Gureasko, J.; Shen, K.; Cole, P.A.; Kuriyan, J.
Deposited on : 2006-04-25
Resolution : 2.60 Å(reported)

This is a wwPDB X-ray Structure Validation Summary Report for a publicly released PDB entry.
We welcome your comments at validation@mail.wwpdb.org
A user guide is available at
<http://wwpdb.org/validation/2016/XrayValidationReportHelp>
with specific help available everywhere you see the ⓘ symbol.

The following versions of software and data (see [references ⓘ](#)) were used in the production of this report:

MolProbity : 4.02b-467
Mogul : 1.7 (RC4), CSD as536be (2015)
Xtriage (Phenix) : 1.9-1692
EDS : rb-20026688
Percentile statistics : 20151230.v01 (using entries in the PDB archive December 30th 2015)
Refmac : 5.8.0135
CCP4 : 6.5.0
Ideal geometry (proteins) : Engh & Huber (2001)
Ideal geometry (DNA, RNA) : Parkinson et al. (1996)
Validation Pipeline (wwPDB-VP) : trunk26865

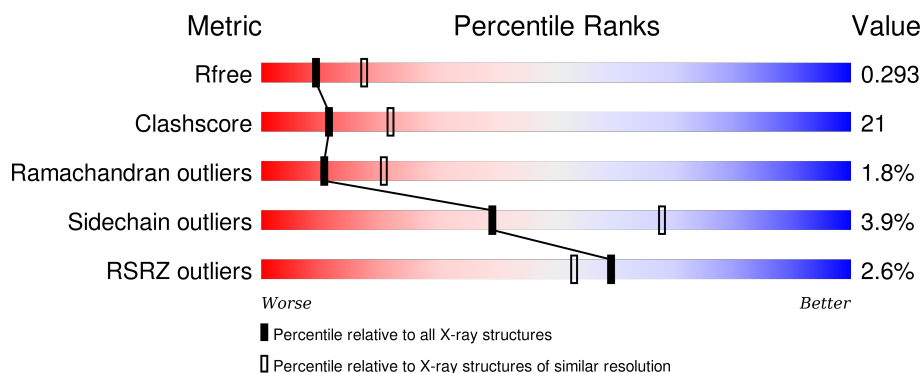
1 Overall quality at a glance

The following experimental techniques were used to determine the structure:

X-RAY DIFFRACTION

The reported resolution of this entry is 2.60 Å.

Percentile scores (ranging between 0-100) for global validation metrics of the entry are shown in the following graphic. The table shows the number of entries on which the scores are based.



Metric	Whole archive (#Entries)	Similar resolution (#Entries, resolution range(Å))
R_{free}	91344	2328 (2.60-2.60)
Clashscore	102246	2679 (2.60-2.60)
Ramachandran outliers	100387	2635 (2.60-2.60)
Sidechain outliers	100360	2635 (2.60-2.60)
RSRZ outliers	91569	2334 (2.60-2.60)

The table below summarises the geometric issues observed across the polymeric chains and their fit to the electron density. The red, orange, yellow and green segments on the lower bar indicate the fraction of residues that contain outliers for ≥ 3 , 2, 1 and 0 types of geometric quality criteria. A grey segment represents the fraction of residues that are not modelled. The numeric value for each fraction is indicated below the corresponding segment, with a dot representing fractions $\leq 5\%$. The upper red bar (where present) indicates the fraction of residues that have poor fit to the electron density. The numeric value is given above the bar.

Mol	Chain	Length	Quality of chain
1	A	330	
1	B	330	

The following table lists non-polymeric compounds, carbohydrate monomers and non-standard residues in protein, DNA, RNA chains that are outliers for geometric or electron-density-fit criteria:

Mol	Type	Chain	Res	Chirality	Geometry	Clashes	Electron density
3	IOD	B	405	-	-	X	-

2 Entry composition [i](#)

There are 5 unique types of molecules in this entry. The entry contains 4749 atoms, of which 0 are hydrogens and 0 are deuteriums.

In the tables below, the ZeroOcc column contains the number of atoms modelled with zero occupancy, the AltConf column contains the number of residues with at least one atom in alternate conformation and the Trace column contains the number of residues modelled with at most 2 atoms.

- Molecule 1 is a protein called Epidermal growth factor receptor.

Mol	Chain	Residues	Atoms					ZeroOcc	AltConf	Trace
1	A	281	Total	C	N	O	S	0	0	0
			2227	1438	378	396	15			
1	B	288	Total	C	N	O	S	0	0	0
			2278	1469	386	408	15			

There are 8 discrepancies between the modelled and reference sequences:

Chain	Residue	Modelled	Actual	Comment	Reference
A	669	GLY	-	CLONING ARTIFACT	UNP P00533
A	670	ALA	-	CLONING ARTIFACT	UNP P00533
A	671	MET	-	CLONING ARTIFACT	UNP P00533
A	924	ARG	VAL	ENGINEERED	UNP P00533
B	669	GLY	-	CLONING ARTIFACT	UNP P00533
B	670	ALA	-	CLONING ARTIFACT	UNP P00533
B	671	MET	-	CLONING ARTIFACT	UNP P00533
B	924	ARG	VAL	ENGINEERED	UNP P00533

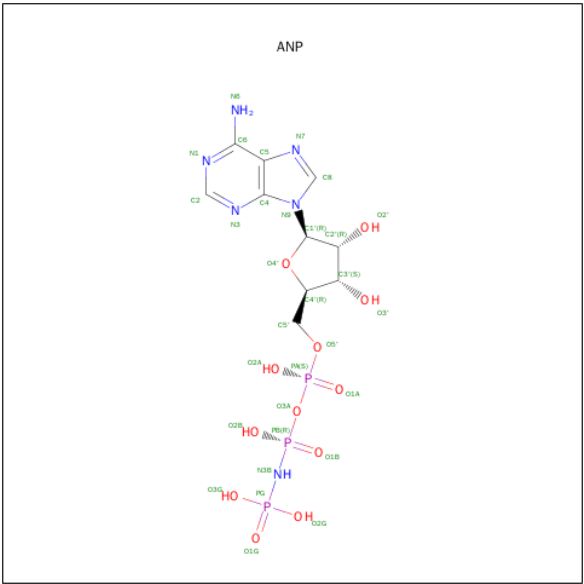
- Molecule 2 is MAGNESIUM ION (three-letter code: MG) (formula: Mg).

Mol	Chain	Residues	Atoms		ZeroOcc	AltConf
2	B	1	Total	Mg	0	0
			1	1		
2	A	1	Total	Mg	0	0
			1	1		

- Molecule 3 is IODIDE ION (three-letter code: IOD) (formula: I).

Mol	Chain	Residues	Atoms		ZeroOcc	AltConf
3	B	6	Total	I	0	0
			6	6		
3	A	5	Total	I	0	0
			5	5		

- Molecule 4 is PHOSPHOAMINOPHOSPHONIC ACID-ADENYLATE ESTER (three-letter code: ANP) (formula: C₁₀H₁₇N₆O₁₂P₃).



Mol	Chain	Residues	Atoms					ZeroOcc	AltConf
4	A	1	Total	C	N	O	P	0	0
			31	10	6	12	3		
4	B	1	Total	C	N	O	P	0	0
			31	10	6	12	3		

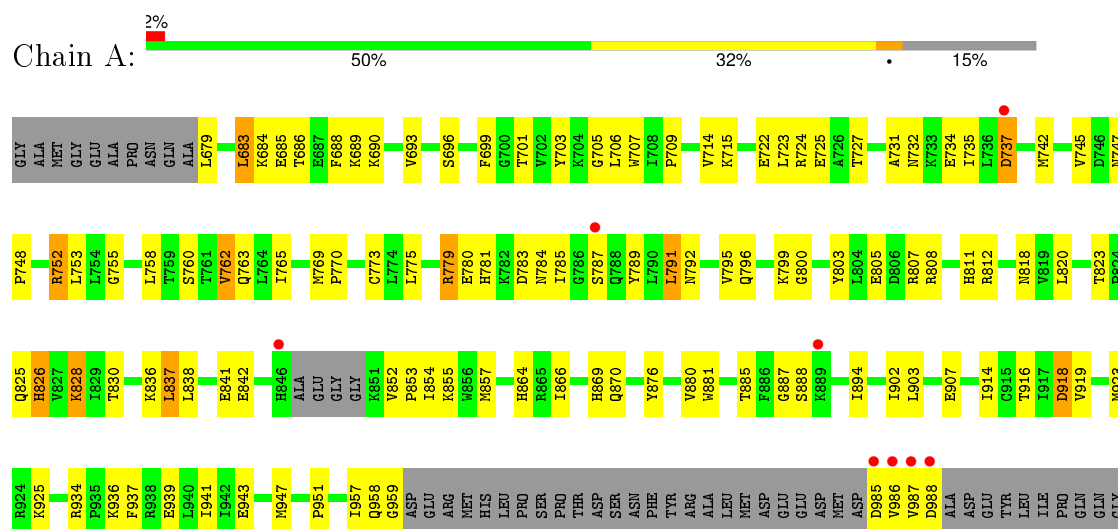
- Molecule 5 is water.

Mol	Chain	Residues	Atoms		ZeroOcc	AltConf
5	A	82	Total	O	0	0
			82	82		
5	B	87	Total	O	0	0
			87	87		

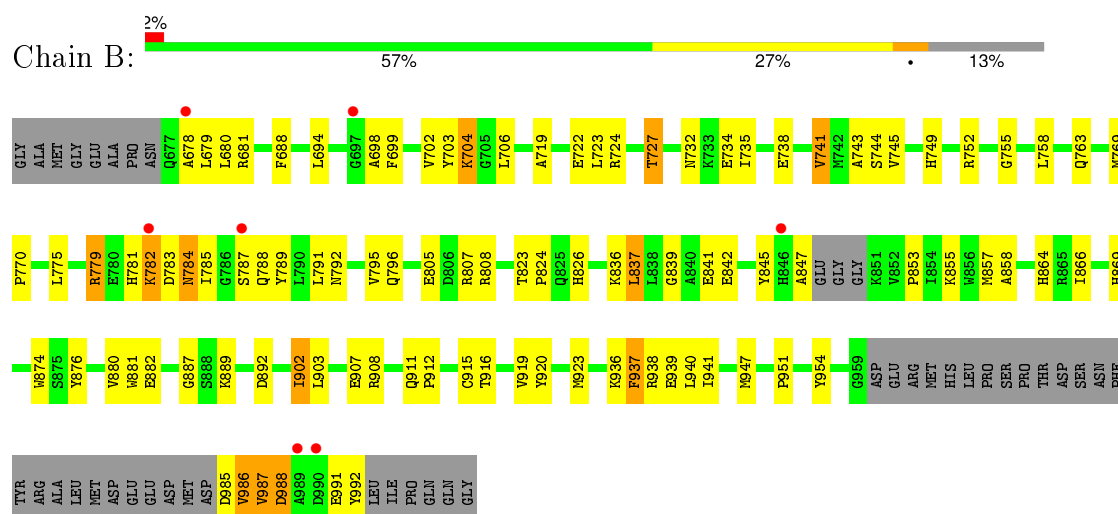
3 Residue-property plots [i](#)

These plots are drawn for all protein, RNA and DNA chains in the entry. The first graphic for a chain summarises the proportions of errors displayed in the second graphic. The second graphic shows the sequence view annotated by issues in geometry and electron density. Residues are color-coded according to the number of geometric quality criteria for which they contain at least one outlier: green = 0, yellow = 1, orange = 2 and red = 3 or more. A red dot above a residue indicates a poor fit to the electron density ($RSRZ > 2$). Stretches of 2 or more consecutive residues without any outlier are shown as a green connector. Residues present in the sample, but not in the model, are shown in grey.

• Molecule 1: Epidermal growth factor receptor



• Molecule 1: Epidermal growth factor receptor



4 Data and refinement statistics

Property	Value	Source
Space group	P 1 21 1	Depositor
Cell constants a, b, c, α , β , γ	64.60Å 85.25Å 78.33Å 90.00° 96.36° 90.00°	Depositor
Resolution (Å)	50.00 – 2.60 44.68 – 2.50	Depositor EDS
% Data completeness (in resolution range)	89.6 (50.00-2.60) 86.1 (44.68-2.50)	Depositor EDS
R_{merge}	(Not available)	Depositor
R_{sym}	0.11	Depositor
$\langle I/\sigma(I) \rangle$ ¹	2.72 (at 2.51Å)	Xtriage
Refinement program	CNS	Depositor
R, R_{free}	0.233 , 0.298 0.230 , 0.293	Depositor DCC
R_{free} test set	1843 reflections (8.47%)	DCC
Wilson B-factor (Å ²)	32.8	Xtriage
Anisotropy	0.507	Xtriage
Bulk solvent k_{sol} (e/Å ³), B_{sol} (Å ²)	0.37 , 59.8	EDS
Estimated twinning fraction	No twinning to report.	Xtriage
L-test for twinning ²	$\langle L \rangle = 0.48$, $\langle L^2 \rangle = 0.32$	Xtriage
Outliers	2 of 27766 reflections (0.007%)	Xtriage
F_o, F_c correlation	0.92	EDS
Total number of atoms	4749	wwPDB-VP
Average B, all atoms (Å ²)	42.0	wwPDB-VP

Xtriage's analysis on translational NCS is as follows: *The analyses of the Patterson function reveals a significant off-origin peak that is 23.56 % of the origin peak, indicating pseudo translational symmetry. The chance of finding a peak of this or larger height randomly in a structure without pseudo translational symmetry is equal to 4.5484e-03. The detected translational NCS is most likely also responsible for the elevated intensity ratio.*

¹ Intensities estimated from amplitudes.

² Theoretical values of $\langle |L| \rangle$, $\langle L^2 \rangle$ for acentric reflections are 0.5, 0.375 respectively for untwinned datasets, and 0.333, 0.2 for perfectly twinned datasets.

5 Model quality [i](#)

5.1 Standard geometry [i](#)

Bond lengths and bond angles in the following residue types are not validated in this section: MG, IOD, ANP

The Z score for a bond length (or angle) is the number of standard deviations the observed value is removed from the expected value. A bond length (or angle) with $|Z| > 5$ is considered an outlier worth inspection. RMSZ is the root-mean-square of all Z scores of the bond lengths (or angles).

Mol	Chain	Bond lengths		Bond angles	
		RMSZ	# Z >5	RMSZ	# Z >5
1	A	0.36	0/2275	0.63	0/3083
1	B	0.37	0/2327	0.66	1/3153 (0.0%)
All	All	0.37	0/4602	0.64	1/6236 (0.0%)

There are no bond length outliers.

All (1) bond angle outliers are listed below:

Mol	Chain	Res	Type	Atoms	Z	Observed(°)	Ideal(°)
1	B	704	LYS	N-CA-C	-6.57	93.27	111.00

There are no chirality outliers.

There are no planarity outliers.

5.2 Too-close contacts [i](#)

In the following table, the Non-H and H(model) columns list the number of non-hydrogen atoms and hydrogen atoms in the chain respectively. The H(added) column lists the number of hydrogen atoms added and optimized by MolProbity. The Clashes column lists the number of clashes within the asymmetric unit, whereas Symm-Clashes lists symmetry related clashes.

Mol	Chain	Non-H	H(model)	H(added)	Clashes	Symm-Clashes
1	A	2227	0	2255	96	0
1	B	2278	0	2295	92	0
2	A	1	0	0	0	0
2	B	1	0	0	0	0
3	A	5	0	0	2	0
3	B	6	0	0	5	0
4	A	31	0	13	0	0
4	B	31	0	13	0	0

Continued on next page...

Continued from previous page...

Mol	Chain	Non-H	H(model)	H(added)	Clashes	Symm-Clashes
5	A	82	0	0	7	0
5	B	87	0	0	10	0
All	All	4749	0	4576	188	0

The all-atom clashscore is defined as the number of clashes found per 1000 atoms (including hydrogen atoms). The all-atom clashscore for this structure is 21.

The worst 5 of 188 close contacts within the same asymmetric unit are listed below, sorted by their clash magnitude.

Atom-1	Atom-2	Interatomic distance (Å)	Clash overlap (Å)
1:A:747:ASN:HD22	1:A:748:PRO:HD2	1.26	1.00
1:A:959:GLY:HA3	5:A:120:HOH:O	1.62	0.97
1:A:747:ASN:ND2	1:A:748:PRO:HD2	1.82	0.94
1:B:902:ILE:HG23	1:B:907:GLU:HB2	1.51	0.92
1:B:919:VAL:HG22	1:B:947:MET:CE	2.12	0.80

There are no symmetry-related clashes.

5.3 Torsion angles [i](#)

5.3.1 Protein backbone [i](#)

In the following table, the Percentiles column shows the percent Ramachandran outliers of the chain as a percentile score with respect to all X-ray entries followed by that with respect to entries of similar resolution.

The Analysed column shows the number of residues for which the backbone conformation was analysed, and the total number of residues.

Mol	Chain	Analysed	Favoured	Allowed	Outliers	Percentiles	
1	A	275/330 (83%)	243 (88%)	29 (10%)	3 (1%)	17	36
1	B	282/330 (86%)	248 (88%)	27 (10%)	7 (2%)	7	12
All	All	557/660 (84%)	491 (88%)	56 (10%)	10 (2%)	11	21

5 of 10 Ramachandran outliers are listed below:

Mol	Chain	Res	Type
1	B	679	LEU
1	B	784	ASN

Continued on next page...

Continued from previous page...

Mol	Chain	Res	Type
1	B	986	VAL
1	B	987	VAL
1	A	685	GLU

5.3.2 Protein sidechains ⓘ

In the following table, the Percentiles column shows the percent sidechain outliers of the chain as a percentile score with respect to all X-ray entries followed by that with respect to entries of similar resolution.

The Analysed column shows the number of residues for which the sidechain conformation was analysed, and the total number of residues.

Mol	Chain	Analysed	Rotameric	Outliers	Percentiles	
1	A	241/288 (84%)	231 (96%)	10 (4%)	37	66
1	B	244/288 (85%)	235 (96%)	9 (4%)	41	69
All	All	485/576 (84%)	466 (96%)	19 (4%)	39	68

5 of 19 residues with a non-rotameric sidechain are listed below:

Mol	Chain	Res	Type
1	A	903	LEU
1	B	727	THR
1	B	837	LEU
1	A	837	LEU
1	B	892	ASP

Some sidechains can be flipped to improve hydrogen bonding and reduce clashes. 5 of 7 such sidechains are listed below:

Mol	Chain	Res	Type
1	A	802	ASN
1	B	869	HIS
1	A	952	GLN
1	A	784	ASN
1	B	792	ASN

5.3.3 RNA ⓘ

There are no RNA molecules in this entry.

5.4 Non-standard residues in protein, DNA, RNA chains ⓘ

There are no non-standard protein/DNA/RNA residues in this entry.

5.5 Carbohydrates ⓘ

There are no carbohydrates in this entry.

5.6 Ligand geometry ⓘ

Of 15 ligands modelled in this entry, 13 are monoatomic - leaving 2 for Mogul analysis.

In the following table, the Counts columns list the number of bonds (or angles) for which Mogul statistics could be retrieved, the number of bonds (or angles) that are observed in the model and the number of bonds (or angles) that are defined in the chemical component dictionary. The Link column lists molecule types, if any, to which the group is linked. The Z score for a bond length (or angle) is the number of standard deviations the observed value is removed from the expected value. A bond length (or angle) with $|Z| > 2$ is considered an outlier worth inspection. RMSZ is the root-mean-square of all Z scores of the bond lengths (or angles).

Mol	Type	Chain	Res	Link	Bond lengths			Bond angles		
					Counts	RMSZ	$\# Z > 2$	Counts	RMSZ	$\# Z > 2$
4	ANP	A	301	2	27,33,33	1.68	7 (25%)	30,52,52	1.71	7 (23%)
4	ANP	B	302	2	27,33,33	1.77	8 (29%)	30,52,52	1.78	8 (26%)

In the following table, the Chirals column lists the number of chiral outliers, the number of chiral centers analysed, the number of these observed in the model and the number defined in the chemical component dictionary. Similar counts are reported in the Torsion and Rings columns. '-' means no outliers of that kind were identified.

Mol	Type	Chain	Res	Link	Chirals	Torsions	Rings
4	ANP	A	301	2	-	1/12/38/38	0/3/3/3
4	ANP	B	302	2	-	0/12/38/38	0/3/3/3

The worst 5 of 15 bond length outliers are listed below:

Mol	Chain	Res	Type	Atoms	Z	Observed(Å)	Ideal(Å)
4	B	302	ANP	PB-O3A	-4.02	1.54	1.59
4	A	301	ANP	PB-O3A	-3.48	1.54	1.59
4	A	301	ANP	PB-O2B	-2.58	1.49	1.56
4	B	302	ANP	PB-O2B	-2.55	1.49	1.56
4	A	301	ANP	PG-O2G	-2.31	1.50	1.56

The worst 5 of 15 bond angle outliers are listed below:

Mol	Chain	Res	Type	Atoms	Z	Observed($^{\circ}$)	Ideal($^{\circ}$)
4	B	302	ANP	O1G-PG-N3B	-4.82	104.51	111.90
4	A	301	ANP	O1G-PG-N3B	-4.44	105.09	111.90
4	A	301	ANP	O1B-PB-N3B	-2.93	107.41	111.90
4	B	302	ANP	O3A-PA-O5'	-2.90	95.23	102.94
4	A	301	ANP	O3A-PA-O5'	-2.30	96.84	102.94

There are no chirality outliers.

All (1) torsion outliers are listed below:

Mol	Chain	Res	Type	Atoms
4	A	301	ANP	O1G-PG-N3B-PB

There are no ring outliers.

No monomer is involved in short contacts.

5.7 Other polymers [i](#)

There are no such residues in this entry.

5.8 Polymer linkage issues [i](#)

There are no chain breaks in this entry.

6 Fit of model and data [i](#)

6.1 Protein, DNA and RNA chains [i](#)

In the following table, the column labelled ‘#RSRZ> 2’ contains the number (and percentage) of RSRZ outliers, followed by percent RSRZ outliers for the chain as percentile scores relative to all X-ray entries and entries of similar resolution. The OWAB column contains the minimum, median, 95th percentile and maximum values of the occupancy-weighted average B-factor per residue. The column labelled ‘Q< 0.9’ lists the number of (and percentage) of residues with an average occupancy less than 0.9.

Mol	Chain	Analysed	<RSRZ>	#RSRZ>2	OWAB(Å ²)	Q<0.9
1	A	281/330 (85%)	0.09	8 (2%) 56 49	23, 41, 63, 105	0
1	B	288/330 (87%)	0.04	7 (2%) 62 56	22, 40, 68, 90	0
All	All	569/660 (86%)	0.06	15 (2%) 59 53	22, 41, 66, 105	0

The worst 5 of 15 RSRZ outliers are listed below:

Mol	Chain	Res	Type	RSRZ
1	A	987	VAL	3.6
1	B	990	ASP	3.5
1	A	787	SER	3.4
1	B	678	ALA	3.3
1	A	988	ASP	2.9

6.2 Non-standard residues in protein, DNA, RNA chains [i](#)

There are no non-standard protein/DNA/RNA residues in this entry.

6.3 Carbohydrates [i](#)

There are no carbohydrates in this entry.

6.4 Ligands [i](#)

In the following table, the Atoms column lists the number of modelled atoms in the group and the number defined in the chemical component dictionary. LLDF column lists the quality of electron density of the group with respect to its neighbouring residues in protein, DNA or RNA chains. The B-factors column lists the minimum, median, 95th percentile and maximum values of B factors of atoms in the group. The column labelled ‘Q< 0.9’ lists the number of atoms with occupancy less than 0.9.

Mol	Type	Chain	Res	Atoms	RSCC	RSR	LLDF	B-factors(\AA^2)	Q<0.9
4	ANP	B	302	31/31	0.89	0.19	0.33	47,53,76,78	0
4	ANP	A	301	31/31	0.89	0.18	0.01	42,51,73,73	0
3	IOD	B	404	1/1	0.99	0.12	-1.38	58,58,58,58	0
3	IOD	A	402	1/1	0.99	0.12	-1.86	58,58,58,58	0
3	IOD	A	410	1/1	0.99	0.05	-2.08	93,93,93,93	0
3	IOD	A	403	1/1	0.99	0.11	-2.37	53,53,53,53	0
3	IOD	B	411	1/1	0.99	0.03	-2.68	91,91,91,91	0
3	IOD	B	401	1/1	0.99	0.11	-3.20	62,62,62,62	0
3	IOD	B	405	1/1	0.94	0.10	-3.29	99,99,99,99	0
3	IOD	B	407	1/1	0.98	0.07	-	81,81,81,81	0
2	MG	A	202	1/1	0.79	0.22	-	36,36,36,36	0
3	IOD	A	409	1/1	0.99	0.04	-	101,101,101,101	0
3	IOD	A	406	1/1	0.98	0.09	-	82,82,82,82	0
2	MG	B	201	1/1	0.87	0.15	-	43,43,43,43	0
3	IOD	B	408	1/1	1.00	0.05	-	99,99,99,99	0

6.5 Other polymers [i](#)

There are no such residues in this entry.