



Full wwPDB X-ray Structure Validation Report ⓘ

Feb 1, 2016 – 04:58 PM GMT

PDB ID : 4GTE
Title : T. Maritima FDTS (E144R mutant) with FAD and Folate
Authors : Mathews, I.I.; Lesley, S.A.; Kohen, A.; Prabhakar, A.
Deposited on : 2012-08-28
Resolution : 1.89 Å(reported)

This is a Full wwPDB X-ray Structure Validation Report for a publicly released PDB entry.
We welcome your comments at validation@mail.wwpdb.org
A user guide is available at
<http://wwpdb.org/validation/2016/XrayValidationReportHelp>
with specific help available everywhere you see the ⓘ symbol.

The following versions of software and data (see [references ⓘ](#)) were used in the production of this report:

MolProbity : 4.02b-467
Mogul : 1.7 (RC4), CSD as536be (2015)
Xtriage (Phenix) : 1.9-1692
EDS : rb-20026688
Percentile statistics : 20151230.v01 (using entries in the PDB archive December 30th 2015)
Refmac : 5.8.0135
CCP4 : 6.5.0
Ideal geometry (proteins) : Engh & Huber (2001)
Ideal geometry (DNA, RNA) : Parkinson et al. (1996)
Validation Pipeline (wwPDB-VP) : trunk26865

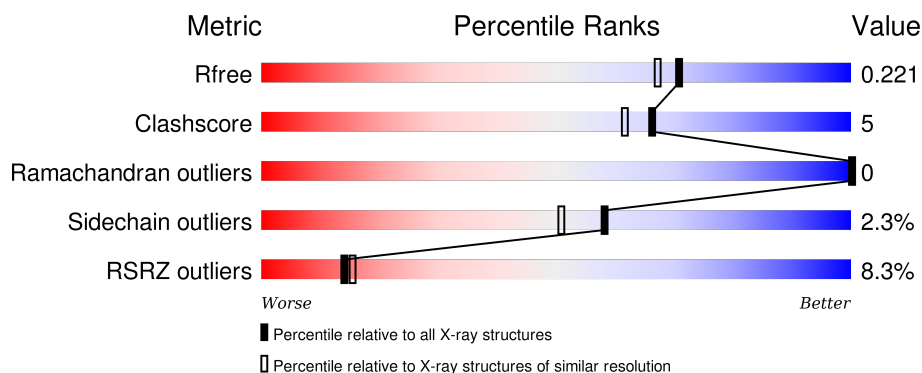
1 Overall quality at a glance

The following experimental techniques were used to determine the structure:

X-RAY DIFFRACTION

The reported resolution of this entry is 1.89 Å.

Percentile scores (ranging between 0-100) for global validation metrics of the entry are shown in the following graphic. The table shows the number of entries on which the scores are based.



Metric	Whole archive (#Entries)	Similar resolution (#Entries, resolution range(Å))
R_{free}	91344	4755 (1.90-1.90)
Clashscore	102246	5398 (1.90-1.90)
Ramachandran outliers	100387	5338 (1.90-1.90)
Sidechain outliers	100360	5339 (1.90-1.90)
RSRZ outliers	91569	4766 (1.90-1.90)

The table below summarises the geometric issues observed across the polymeric chains and their fit to the electron density. The red, orange, yellow and green segments on the lower bar indicate the fraction of residues that contain outliers for ≥ 3 , 2, 1 and 0 types of geometric quality criteria. A grey segment represents the fraction of residues that are not modelled. The numeric value for each fraction is indicated below the corresponding segment, with a dot representing fractions $\leq 5\%$. The upper red bar (where present) indicates the fraction of residues that have poor fit to the electron density. The numeric value is given above the bar.

Mol	Chain	Length	Quality of chain
1	A	232	<div> <div>9%</div> <div>80% 11% • 7%</div> </div>
1	B	232	<div> <div>9%</div> <div>81% 10% • 8%</div> </div>
1	C	232	<div> <div>6%</div> <div>81% 10% • 6%</div> </div>
1	D	232	<div> <div>6%</div> <div>81% 11% 8%</div> </div>

The following table lists non-polymeric compounds, carbohydrate monomers and non-standard

residues in protein, DNA, RNA chains that are outliers for geometric or electron-density-fit criteria:

Mol	Type	Chain	Res	Chirality	Geometry	Clashes	Electron density
3	MEF	B	302	-	-	-	X
3	MEF	D	302	-	-	-	X

2 Entry composition

There are 4 unique types of molecules in this entry. The entry contains 7627 atoms, of which 0 are hydrogens and 0 are deuteriums.

In the tables below, the ZeroOcc column contains the number of atoms modelled with zero occupancy, the AltConf column contains the number of residues with at least one atom in alternate conformation and the Trace column contains the number of residues modelled with at most 2 atoms.

- Molecule 1 is a protein called Thymidylate synthase thyX.

Mol	Chain	Residues	Atoms					ZeroOcc	AltConf	Trace
1	A	215	Total	C	N	O	S	0	1	0
			1815	1180	315	314	6			
1	B	214	Total	C	N	O	S	0	1	0
			1809	1176	313	315	5			
1	C	217	Total	C	N	O	S	0	0	0
			1823	1185	314	319	5			
1	D	214	Total	C	N	O	S	0	2	0
			1807	1177	310	315	5			

There are 52 discrepancies between the modelled and reference sequences:

Chain	Residue	Modelled	Actual	Comment	Reference
A	-11	MET	-	EXPRESSION TAG	UNP Q9WYT0
A	-10	GLY	-	EXPRESSION TAG	UNP Q9WYT0
A	-9	SER	-	EXPRESSION TAG	UNP Q9WYT0
A	-8	ASP	-	EXPRESSION TAG	UNP Q9WYT0
A	-7	LYS	-	EXPRESSION TAG	UNP Q9WYT0
A	-6	ILE	-	EXPRESSION TAG	UNP Q9WYT0
A	-5	HIS	-	EXPRESSION TAG	UNP Q9WYT0
A	-4	HIS	-	EXPRESSION TAG	UNP Q9WYT0
A	-3	HIS	-	EXPRESSION TAG	UNP Q9WYT0
A	-2	HIS	-	EXPRESSION TAG	UNP Q9WYT0
A	-1	HIS	-	EXPRESSION TAG	UNP Q9WYT0
A	0	HIS	-	EXPRESSION TAG	UNP Q9WYT0
A	144	ARG	GLU	ENGINEERED MUTATION	UNP Q9WYT0
B	-11	MET	-	EXPRESSION TAG	UNP Q9WYT0
B	-10	GLY	-	EXPRESSION TAG	UNP Q9WYT0
B	-9	SER	-	EXPRESSION TAG	UNP Q9WYT0
B	-8	ASP	-	EXPRESSION TAG	UNP Q9WYT0
B	-7	LYS	-	EXPRESSION TAG	UNP Q9WYT0
B	-6	ILE	-	EXPRESSION TAG	UNP Q9WYT0
B	-5	HIS	-	EXPRESSION TAG	UNP Q9WYT0
B	-4	HIS	-	EXPRESSION TAG	UNP Q9WYT0

Continued on next page...

Continued from previous page...

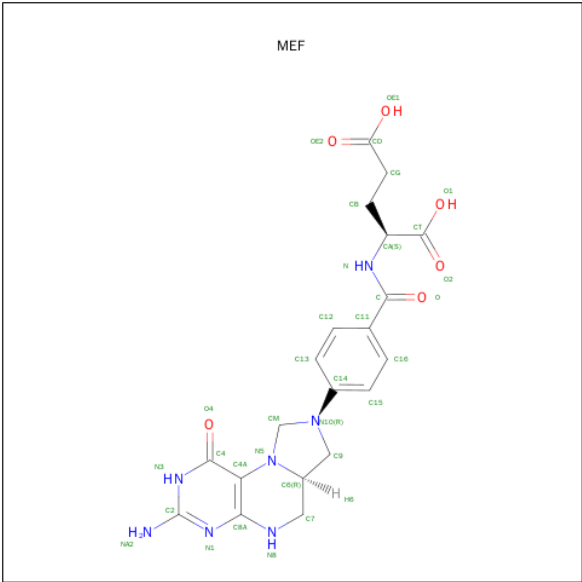
Chain	Residue	Modelled	Actual	Comment	Reference
B	-3	HIS	-	EXPRESSION TAG	UNP Q9WYT0
B	-2	HIS	-	EXPRESSION TAG	UNP Q9WYT0
B	-1	HIS	-	EXPRESSION TAG	UNP Q9WYT0
B	0	HIS	-	EXPRESSION TAG	UNP Q9WYT0
B	144	ARG	GLU	ENGINEERED MUTATION	UNP Q9WYT0
C	-11	MET	-	EXPRESSION TAG	UNP Q9WYT0
C	-10	GLY	-	EXPRESSION TAG	UNP Q9WYT0
C	-9	SER	-	EXPRESSION TAG	UNP Q9WYT0
C	-8	ASP	-	EXPRESSION TAG	UNP Q9WYT0
C	-7	LYS	-	EXPRESSION TAG	UNP Q9WYT0
C	-6	ILE	-	EXPRESSION TAG	UNP Q9WYT0
C	-5	HIS	-	EXPRESSION TAG	UNP Q9WYT0
C	-4	HIS	-	EXPRESSION TAG	UNP Q9WYT0
C	-3	HIS	-	EXPRESSION TAG	UNP Q9WYT0
C	-2	HIS	-	EXPRESSION TAG	UNP Q9WYT0
C	-1	HIS	-	EXPRESSION TAG	UNP Q9WYT0
C	0	HIS	-	EXPRESSION TAG	UNP Q9WYT0
C	144	ARG	GLU	ENGINEERED MUTATION	UNP Q9WYT0
D	-11	MET	-	EXPRESSION TAG	UNP Q9WYT0
D	-10	GLY	-	EXPRESSION TAG	UNP Q9WYT0
D	-9	SER	-	EXPRESSION TAG	UNP Q9WYT0
D	-8	ASP	-	EXPRESSION TAG	UNP Q9WYT0
D	-7	LYS	-	EXPRESSION TAG	UNP Q9WYT0
D	-6	ILE	-	EXPRESSION TAG	UNP Q9WYT0
D	-5	HIS	-	EXPRESSION TAG	UNP Q9WYT0
D	-4	HIS	-	EXPRESSION TAG	UNP Q9WYT0
D	-3	HIS	-	EXPRESSION TAG	UNP Q9WYT0
D	-2	HIS	-	EXPRESSION TAG	UNP Q9WYT0
D	-1	HIS	-	EXPRESSION TAG	UNP Q9WYT0
D	0	HIS	-	EXPRESSION TAG	UNP Q9WYT0
D	144	ARG	GLU	ENGINEERED MUTATION	UNP Q9WYT0

- Molecule 2 is FLAVIN-ADENINE DINUCLEOTIDE (three-letter code: FAD) (formula: $C_{27}H_{33}N_9O_{15}P_2$).



Mol	Chain	Residues	Atoms					ZeroOcc	AltConf
2	A	1	Total	C	N	O	P	0	0
			35	15	5	13	2		
2	B	1	Total	C	N	O	P	0	0
			53	27	9	15	2		
2	C	1	Total	C	N	O	P	0	0
			35	15	5	13	2		
2	D	1	Total	C	N	O	P	0	0
			53	27	9	15	2		

- Molecule 3 is N-({4-[(6AR)-3-AMINO-1-OXO-1,2,5,6,6A,7-HEXAHYDROIMIDAZO[1,5-F]PTERIDIN-8(9H)-YL]PHENYL}CARBONYL)-L-GLUTAMIC ACID (three-letter code: MEF) (formula: C₂₀H₂₃N₇O₆).



Mol	Chain	Residues	Atoms				ZeroOcc	AltConf
3	B	1	Total	C	N	O	0	0
			15	8	6	1		
3	D	1	Total	C	N	O	0	0
			15	8	6	1		

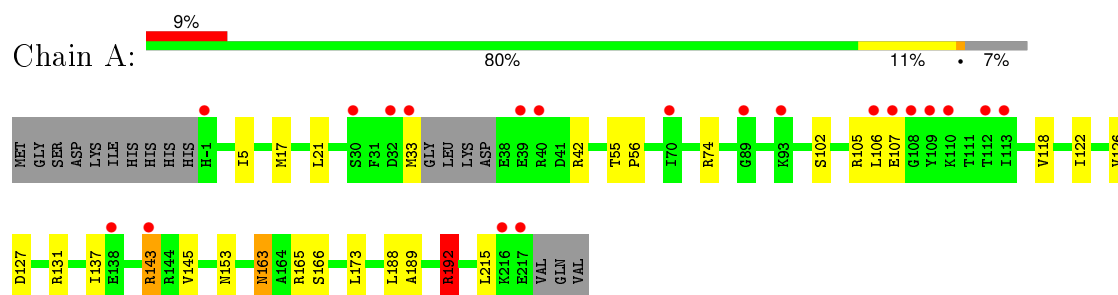
- Molecule 4 is water.

Mol	Chain	Residues	Atoms		ZeroOcc	AltConf
4	A	42	Total	O	0	0
			42	42		
4	B	38	Total	O	0	1
			39	39		
4	C	42	Total	O	0	3
			45	45		
4	D	40	Total	O	0	1
			41	41		

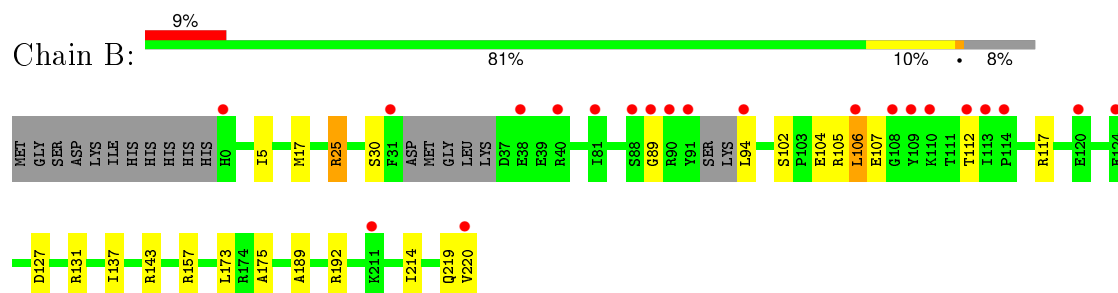
3 Residue-property plots [i](#)

These plots are drawn for all protein, RNA and DNA chains in the entry. The first graphic for a chain summarises the proportions of errors displayed in the second graphic. The second graphic shows the sequence view annotated by issues in geometry and electron density. Residues are color-coded according to the number of geometric quality criteria for which they contain at least one outlier: green = 0, yellow = 1, orange = 2 and red = 3 or more. A red dot above a residue indicates a poor fit to the electron density ($RSRZ > 2$). Stretches of 2 or more consecutive residues without any outlier are shown as a green connector. Residues present in the sample, but not in the model, are shown in grey.

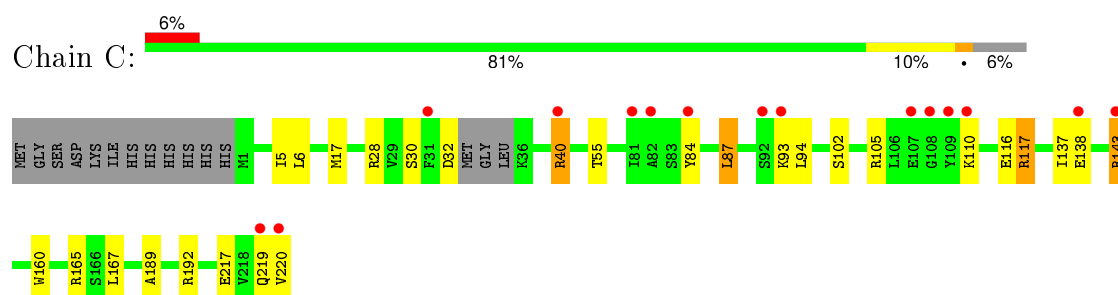
- Molecule 1: Thymidylate synthase thyX



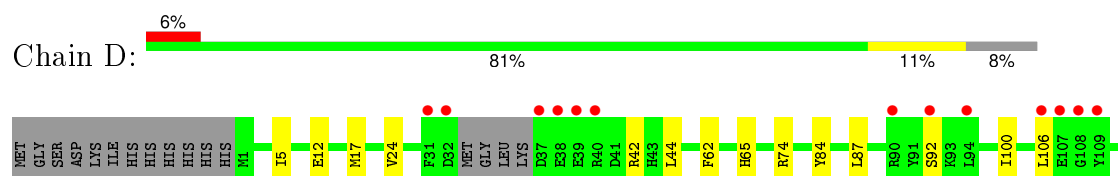
- Molecule 1: Thymidylate synthase thyX

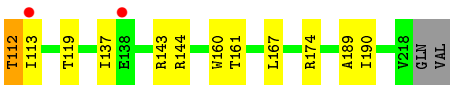


- Molecule 1: Thymidylate synthase thyX



- Molecule 1: Thymidylate synthase thyX





4 Data and refinement statistics

Property	Value	Source
Space group	P 21 21 21	Depositor
Cell constants a, b, c, α , β , γ	54.71Å 117.07Å 141.91Å 90.00° 90.00° 90.00°	Depositor
Resolution (Å)	38.47 – 1.89 38.47 – 1.89	Depositor EDS
% Data completeness (in resolution range)	99.2 (38.47-1.89) 99.2 (38.47-1.89)	Depositor EDS
R_{merge}	0.08	Depositor
R_{sym}	(Not available)	Depositor
$\langle I/\sigma(I) \rangle$ ¹	1.65 (at 1.89Å)	Xtriage
Refinement program	REFMAC 5.5.0110	Depositor
R, R_{free}	0.184 , 0.213 0.192 , 0.221	Depositor DCC
R_{free} test set	3719 reflections (5.35%)	DCC
Wilson B-factor (Å ²)	33.1	Xtriage
Anisotropy	0.037	Xtriage
Bulk solvent k_{sol} (e/Å ³), B_{sol} (Å ²)	0.39 , 51.7	EDS
Estimated twinning fraction	No twinning to report.	Xtriage
L-test for twinning ²	$\langle L \rangle = 0.48$, $\langle L^2 \rangle = 0.31$	Xtriage
Outliers	3 of 73192 reflections (0.004%)	Xtriage
F_o, F_c correlation	0.96	EDS
Total number of atoms	7627	wwPDB-VP
Average B, all atoms (Å ²)	40.0	wwPDB-VP

Xtriage's analysis on translational NCS is as follows: *The largest off-origin peak in the Patterson function is 4.31% of the height of the origin peak. No significant pseudotranslation is detected.*

¹Intensities estimated from amplitudes.

²Theoretical values of $\langle |L| \rangle$, $\langle L^2 \rangle$ for acentric reflections are 0.5, 0.375 respectively for untwinned datasets, and 0.333, 0.2 for perfectly twinned datasets.

5 Model quality

5.1 Standard geometry

Bond lengths and bond angles in the following residue types are not validated in this section: MEF, FAD

The Z score for a bond length (or angle) is the number of standard deviations the observed value is removed from the expected value. A bond length (or angle) with $|Z| > 5$ is considered an outlier worth inspection. RMSZ is the root-mean-square of all Z scores of the bond lengths (or angles).

Mol	Chain	Bond lengths		Bond angles	
		RMSZ	$\# Z > 5$	RMSZ	$\# Z > 5$
1	A	0.87	0/1869	0.80	1/2525 (0.0%)
1	B	0.82	0/1857	0.78	1/2509 (0.0%)
1	C	0.82	0/1871	0.84	2/2527 (0.1%)
1	D	0.80	0/1862	0.78	0/2517
All	All	0.83	0/7459	0.80	4/10078 (0.0%)

There are no bond length outliers.

All (4) bond angle outliers are listed below:

Mol	Chain	Res	Type	Atoms	Z	Observed(°)	Ideal(°)
1	B	157	ARG	NE-CZ-NH1	6.25	123.42	120.30
1	A	192	ARG	NE-CZ-NH1	5.84	123.22	120.30
1	C	192	ARG	NE-CZ-NH1	5.59	123.09	120.30
1	C	87	LEU	CA-CB-CG	5.17	127.20	115.30

There are no chirality outliers.

There are no planarity outliers.

5.2 Too-close contacts

In the following table, the Non-H and H(model) columns list the number of non-hydrogen atoms and hydrogen atoms in the chain respectively. The H(added) column lists the number of hydrogen atoms added and optimized by MolProbity. The Clashes column lists the number of clashes within the asymmetric unit, whereas Symm-Clashes lists symmetry related clashes.

Mol	Chain	Non-H	H(model)	H(added)	Clashes	Symm-Clashes
1	A	1815	0	1806	20	0
1	B	1809	0	1798	18	0
1	C	1823	0	1822	18	0

Continued on next page...

Continued from previous page...

Mol	Chain	Non-H	H(model)	H(added)	Clashes	Symm-Clashes
1	D	1807	0	1807	18	0
2	A	35	0	20	3	0
2	B	53	0	31	2	0
2	C	35	0	20	1	0
2	D	53	0	31	2	0
3	B	15	0	11	0	0
3	D	15	0	11	1	0
4	A	42	0	0	0	0
4	B	39	0	0	0	0
4	C	45	0	0	2	0
4	D	41	0	0	0	0
All	All	7627	0	7357	73	0

The all-atom clashscore is defined as the number of clashes found per 1000 atoms (including hydrogen atoms). The all-atom clashscore for this structure is 5.

All (73) close contacts within the same asymmetric unit are listed below, sorted by their clash magnitude.

Atom-1	Atom-2	Interatomic distance (Å)	Clash overlap (Å)
1:B:89:GLY:HA2	1:B:94:LEU:HD21	1.23	1.11
1:A:173:LEU:HD13	2:A:301:FAD:O4'	1.73	0.87
1:A:17:MET:HB2	1:B:17:MET:HB2	1.57	0.84
1:B:89:GLY:CA	1:B:94:LEU:HD21	2.07	0.80
1:B:89:GLY:HA2	1:B:94:LEU:CD2	2.10	0.80
1:C:28:ARG:HH22	1:C:40:ARG:HD3	1.52	0.74
1:C:219:GLN:O	1:C:220:VAL:HG22	1.88	0.72
1:C:17:MET:HB2	1:D:17:MET:HB2	1.74	0.69
1:C:137:ILE:HD12	1:C:143:ARG:HG3	1.74	0.69
1:B:219:GLN:O	1:B:220:VAL:HG22	1.95	0.66
1:A:137:ILE:HD12	1:A:143:ARG:HG3	1.79	0.64
1:B:94:LEU:N	1:B:94:LEU:HD22	2.12	0.64
1:B:105:ARG:HG3	1:B:106:LEU:HD13	1.81	0.62
1:C:28:ARG:NH2	1:C:40:ARG:HD3	2.14	0.61
1:A:127:ASP:OD2	1:A:131:ARG:NH1	2.35	0.59
1:A:163:ASN:HD22	1:A:163:ASN:C	2.06	0.58
1:B:5:ILE:HD11	1:B:189:ALA:HB2	1.84	0.58
1:D:167[B]:LEU:HD11	1:D:190:ILE:HG21	1.86	0.57
1:D:174:ARG:HH22	3:D:302:MEF:HNA2	1.55	0.54
1:C:5:ILE:HD11	1:C:189:ALA:HB2	1.89	0.54
1:D:112:THR:HG22	1:D:113:ILE:HG23	1.90	0.53
1:A:173:LEU:HD13	2:A:301:FAD:HO4'	1.70	0.53

Continued on next page...

Continued from previous page...

Atom-1	Atom-2	Interatomic distance (Å)	Clash overlap (Å)
1:A:163:ASN:ND2	1:A:166:SER:H	2.07	0.52
1:C:55:THR:HG23	4:C:438:HOH:O	2.09	0.52
1:A:137:ILE:CD1	1:A:143:ARG:HG3	2.40	0.51
1:D:87:LEU:HD11	1:D:92:SER:OG	2.11	0.51
1:B:25:ARG:HG3	1:B:30:SER:O	2.11	0.51
1:B:94:LEU:N	1:B:94:LEU:CD2	2.75	0.49
1:B:102:SER:O	1:B:105:ARG:HB3	2.12	0.49
1:A:145:VAL:HG11	1:D:106:LEU:HD11	1.93	0.49
1:D:167[B]:LEU:HD11	1:D:190:ILE:CG2	2.42	0.49
1:B:173:LEU:HD13	2:B:301:FAD:O4'	2.12	0.49
1:A:5:ILE:HD11	1:A:189:ALA:HB2	1.96	0.48
1:A:165:ARG:CZ	2:C:301:FAD:H2B	2.44	0.48
1:C:117:ARG:NH2	4:C:436:HOH:O	2.47	0.47
1:C:30:SER:OG	1:C:32:ASP:HB2	2.15	0.47
1:A:102:SER:O	1:A:105:ARG:HB3	2.14	0.47
2:A:301:FAD:H2B	1:C:165:ARG:CZ	2.45	0.47
1:C:137:ILE:CD1	1:C:143:ARG:HG3	2.43	0.46
1:B:112:THR:HG22	1:B:112:THR:O	2.16	0.46
1:A:192:ARG:CG	1:A:192:ARG:HH11	2.29	0.46
1:D:24:VAL:HG13	1:D:44:LEU:HD23	1.98	0.45
1:A:106:LEU:HD13	1:A:118:VAL:HG11	1.98	0.45
1:A:188:LEU:HD23	1:A:215:LEU:HD23	1.99	0.44
1:B:175:ALA:HA	1:B:214:ILE:HD11	1.99	0.44
1:C:102:SER:O	1:C:105:ARG:HB3	2.17	0.44
1:B:104:GLU:HA	1:B:107:GLU:HG2	1.99	0.44
1:D:137:ILE:HD11	1:D:143:ARG:HA	1.99	0.44
1:C:219:GLN:HG3	1:C:220:VAL:HG13	1.98	0.44
1:A:21:LEU:HD13	1:A:33:MET:HA	1.99	0.44
1:D:84:TYR:CE2	1:D:160:TRP:CD1	3.06	0.44
1:C:116:GLU:H	1:C:116:GLU:CD	2.21	0.43
1:B:192:ARG:HD3	1:B:220:VAL:HG21	2.01	0.43
2:B:301:FAD:H9	2:B:301:FAD:H1'1	1.85	0.43
1:D:100:ILE:HG22	1:D:119:THR:HG23	2.00	0.43
1:C:5:ILE:HG22	1:C:6:LEU:HG	1.99	0.43
1:B:127:ASP:O	1:B:131:ARG:HG3	2.19	0.43
1:B:137:ILE:HD11	1:B:143:ARG:HA	2.00	0.42
2:D:301:FAD:O4'	2:D:301:FAD:H1'1	2.20	0.42
1:D:87:LEU:CD1	1:D:92:SER:OG	2.67	0.42
1:C:84:TYR:CE2	1:C:160:TRP:CD1	3.08	0.41
1:D:62:PHE:O	1:D:161:THR:HA	2.19	0.41
1:D:112:THR:O	1:D:112:THR:CG2	2.63	0.41

Continued on next page...

Continued from previous page...

Atom-1	Atom-2	Interatomic distance (Å)	Clash overlap (Å)
1:D:12:GLU:HG2	1:D:65:HIS:HB3	2.02	0.41
1:C:167:LEU:HD23	1:C:167:LEU:C	2.40	0.41
1:C:93:LYS:HD3	1:C:94:LEU:N	2.34	0.41
1:A:122:ILE:O	1:A:126:VAL:HG23	2.20	0.41
1:A:126:VAL:HG21	1:A:153:ASN:HD21	1.86	0.41
1:A:74:ARG:HG2	1:D:74:ARG:CD	2.51	0.40
1:A:55:THR:N	1:A:56:PRO:CD	2.84	0.40
1:D:5:ILE:HD11	1:D:189:ALA:HB2	2.03	0.40
2:D:301:FAD:H9	2:D:301:FAD:H1'1	1.97	0.40

There are no symmetry-related clashes.

5.3 Torsion angles [i](#)

5.3.1 Protein backbone [i](#)

In the following table, the Percentiles column shows the percent Ramachandran outliers of the chain as a percentile score with respect to all X-ray entries followed by that with respect to entries of similar resolution.

The Analysed column shows the number of residues for which the backbone conformation was analysed, and the total number of residues.

Mol	Chain	Analysed	Favoured	Allowed	Outliers	Percentiles	
1	A	212/232 (91%)	206 (97%)	6 (3%)	0	100	100
1	B	209/232 (90%)	201 (96%)	8 (4%)	0	100	100
1	C	213/232 (92%)	208 (98%)	5 (2%)	0	100	100
1	D	212/232 (91%)	206 (97%)	6 (3%)	0	100	100
All	All	846/928 (91%)	821 (97%)	25 (3%)	0	100	100

There are no Ramachandran outliers to report.

5.3.2 Protein sidechains [i](#)

In the following table, the Percentiles column shows the percent sidechain outliers of the chain as a percentile score with respect to all X-ray entries followed by that with respect to entries of similar resolution.

The Analysed column shows the number of residues for which the sidechain conformation was analysed, and the total number of residues.

Mol	Chain	Analysed	Rotameric	Outliers	Percentiles	
1	A	193/207 (93%)	188 (97%)	5 (3%)	54	45
1	B	192/207 (93%)	189 (98%)	3 (2%)	70	66
1	C	194/207 (94%)	187 (96%)	7 (4%)	42	30
1	D	193/207 (93%)	190 (98%)	3 (2%)	70	66
All	All	772/828 (93%)	754 (98%)	18 (2%)	58	51

All (18) residues with a non-rotameric sidechain are listed below:

Mol	Chain	Res	Type
1	A	42	ARG
1	A	107	GLU
1	A	143	ARG
1	A	163	ASN
1	A	192	ARG
1	B	25	ARG
1	B	106	LEU
1	B	117	ARG
1	C	40	ARG
1	C	87	LEU
1	C	110	LYS
1	C	117	ARG
1	C	138	GLU
1	C	143	ARG
1	C	217	GLU
1	D	42	ARG
1	D	112	THR
1	D	144	ARG

Some sidechains can be flipped to improve hydrogen bonding and reduce clashes. All (2) such sidechains are listed below:

Mol	Chain	Res	Type
1	A	163	ASN
1	B	219	GLN

5.3.3 RNA ⓘ

There are no RNA molecules in this entry.

5.4 Non-standard residues in protein, DNA, RNA chains ⓘ

There are no non-standard protein/DNA/RNA residues in this entry.

5.5 Carbohydrates ⓘ

There are no carbohydrates in this entry.

5.6 Ligand geometry ⓘ

6 ligands are modelled in this entry.

In the following table, the Counts columns list the number of bonds (or angles) for which Mogul statistics could be retrieved, the number of bonds (or angles) that are observed in the model and the number of bonds (or angles) that are defined in the chemical component dictionary. The Link column lists molecule types, if any, to which the group is linked. The Z score for a bond length (or angle) is the number of standard deviations the observed value is removed from the expected value. A bond length (or angle) with $|Z| > 2$ is considered an outlier worth inspection. RMSZ is the root-mean-square of all Z scores of the bond lengths (or angles).

Mol	Type	Chain	Res	Link	Bond lengths			Bond angles		
					Counts	RMSZ	$\# Z > 2$	Counts	RMSZ	$\# Z > 2$
2	FAD	A	301	-	29,37,58	1.11	2 (6%)	32,56,89	2.18	6 (18%)
2	FAD	B	301	-	48,58,58	3.04	16 (33%)	54,89,89	2.60	14 (25%)
3	MEF	B	302	-	10,17,36	2.15	3 (30%)	12,25,52	2.79	9 (75%)
2	FAD	C	301	-	29,37,58	1.27	3 (10%)	32,56,89	2.05	7 (21%)
2	FAD	D	301	-	48,58,58	3.02	15 (31%)	54,89,89	2.49	13 (24%)
3	MEF	D	302	-	10,17,36	2.31	3 (30%)	12,25,52	3.10	9 (75%)

In the following table, the Chirals column lists the number of chiral outliers, the number of chiral centers analysed, the number of these observed in the model and the number defined in the chemical component dictionary. Similar counts are reported in the Torsion and Rings columns. '-' means no outliers of that kind were identified.

Mol	Type	Chain	Res	Link	Chirals	Torsions	Rings
2	FAD	A	301	-	-	0/26/46/50	0/3/3/6
2	FAD	B	301	-	-	0/30/50/50	0/6/6/6
3	MEF	B	302	-	-	0/0/19/42	0/3/3/4
2	FAD	C	301	-	-	0/26/46/50	0/3/3/6
2	FAD	D	301	-	-	0/30/50/50	0/6/6/6
3	MEF	D	302	-	-	0/0/19/42	0/3/3/4

All (42) bond length outliers are listed below:

Mol	Chain	Res	Type	Atoms	Z	Observed(Å)	Ideal(Å)
2	B	301	FAD	C9A-N10	-5.37	1.31	1.38
2	D	301	FAD	C9A-N10	-4.72	1.32	1.38
2	D	301	FAD	C1'-N10	2.07	1.50	1.48
2	B	301	FAD	PA-O1A	2.10	1.58	1.51
2	A	301	FAD	PA-O1A	2.18	1.59	1.51
2	B	301	FAD	O4B-C1B	2.18	1.44	1.41
2	C	301	FAD	PA-O1A	2.33	1.59	1.51
3	B	302	MEF	C6-N5	2.54	1.51	1.47
2	B	301	FAD	C2A-N1A	2.56	1.38	1.33
3	D	302	MEF	C6-N5	2.76	1.51	1.47
2	D	301	FAD	O4B-C1B	2.95	1.44	1.41
3	B	302	MEF	C4-N3	2.96	1.38	1.33
2	C	301	FAD	O4B-C1B	3.13	1.45	1.41
3	D	302	MEF	C4-N3	3.17	1.39	1.33
2	D	301	FAD	C8-C7	3.33	1.49	1.41
2	D	301	FAD	C5A-C4A	3.58	1.48	1.40
2	A	301	FAD	C5A-C4A	3.59	1.48	1.40
2	B	301	FAD	C5A-C4A	3.65	1.48	1.40
2	C	301	FAD	C5A-C4A	3.84	1.49	1.40
2	B	301	FAD	C8-C7	3.88	1.51	1.41
2	B	301	FAD	C4-C4X	3.96	1.49	1.41
2	D	301	FAD	C4-C4X	3.99	1.49	1.41
2	B	301	FAD	C9A-C5X	4.28	1.51	1.42
2	B	301	FAD	C9-C9A	4.35	1.50	1.40
2	D	301	FAD	C9-C9A	4.66	1.50	1.40
2	B	301	FAD	C4X-C10	4.80	1.50	1.41
2	D	301	FAD	C6-C7	4.87	1.51	1.37
3	B	302	MEF	O4-C4	5.04	1.36	1.24
3	D	302	MEF	O4-C4	5.25	1.37	1.24
2	D	301	FAD	C9A-C5X	5.42	1.53	1.42
2	B	301	FAD	C5X-N5	5.59	1.44	1.35
2	B	301	FAD	C6-C7	5.73	1.53	1.37
2	D	301	FAD	C6-C5X	5.76	1.50	1.41
2	D	301	FAD	C4X-C10	5.83	1.51	1.41
2	D	301	FAD	C5X-N5	5.87	1.44	1.35
2	B	301	FAD	C10-N1	6.62	1.46	1.35
2	B	301	FAD	C4X-N5	6.89	1.44	1.33
2	D	301	FAD	C4X-N5	7.14	1.44	1.33
2	B	301	FAD	C10-N10	7.23	1.47	1.39
2	D	301	FAD	C10-N10	7.47	1.47	1.39
2	D	301	FAD	C10-N1	7.62	1.48	1.35
2	B	301	FAD	C6-C5X	7.76	1.53	1.41

All (58) bond angle outliers are listed below:

Mol	Chain	Res	Type	Atoms	Z	Observed(°)	Ideal(°)
2	A	301	FAD	N3A-C2A-N1A	-9.60	121.55	128.89
2	B	301	FAD	N3A-C2A-N1A	-9.15	121.89	128.89
2	C	301	FAD	N3A-C2A-N1A	-8.37	122.49	128.89
2	D	301	FAD	N3A-C2A-N1A	-8.18	122.63	128.89
2	B	301	FAD	C4-C4X-C10	-6.41	115.84	119.94
2	D	301	FAD	C4-C4X-C10	-4.77	116.89	119.94
2	D	301	FAD	C4X-C4-N3	-4.11	117.97	123.59
3	D	302	MEF	N3-C2-N1	-3.66	119.53	125.53
3	B	302	MEF	N3-C2-N1	-3.23	120.23	125.53
2	A	301	FAD	C1B-N9A-C4A	-3.08	122.30	126.94
2	C	301	FAD	C1B-N9A-C4A	-3.06	122.33	126.94
2	B	301	FAD	C4X-C10-N10	-2.97	118.77	120.52
2	B	301	FAD	C4X-C4-N3	-2.93	119.58	123.59
2	D	301	FAD	C6-C5X-N5	-2.80	115.36	118.96
2	A	301	FAD	C4A-C5A-N7A	-2.79	106.92	109.48
2	C	301	FAD	O3P-PA-O5B	-2.76	95.61	102.94
3	D	302	MEF	CM-N5-C4A	-2.65	115.90	122.64
2	D	301	FAD	C8M-C8-C7	-2.45	115.34	120.73
2	B	301	FAD	O2'-C2'-C1'	-2.35	104.17	109.94
3	B	302	MEF	CM-N5-C4A	-2.28	116.84	122.64
2	D	301	FAD	O3P-PA-O5B	-2.24	96.99	102.94
2	D	301	FAD	C9-C9A-C5X	-2.16	115.78	119.62
2	C	301	FAD	C4A-C5A-N7A	-2.07	107.57	109.48
2	B	301	FAD	C9-C9A-C5X	-2.05	115.98	119.62
3	D	302	MEF	NA2-C2-N1	-2.02	113.86	117.20
3	B	302	MEF	C4A-C4-N3	-2.02	120.35	123.46
2	D	301	FAD	C1'-C2'-C3'	2.04	115.65	109.82
2	B	301	FAD	O2A-PA-O1A	2.37	125.35	112.53
3	D	302	MEF	C4-C4A-C8A	2.37	116.32	114.43
2	D	301	FAD	C4-C4X-N5	2.38	121.61	118.72
2	D	301	FAD	C2A-N1A-C6A	2.46	123.16	118.77
2	A	301	FAD	C2A-N1A-C6A	2.49	123.21	118.77
2	A	301	FAD	O2A-PA-O1A	2.55	126.35	112.53
2	B	301	FAD	C2A-N1A-C6A	2.67	123.54	118.77
3	D	302	MEF	C4-N3-C2	2.71	119.70	115.94
2	C	301	FAD	C2A-N1A-C6A	2.74	123.67	118.77
2	C	301	FAD	C2B-C1B-N9A	2.77	118.52	114.29
2	B	301	FAD	O2'-C2'-C3'	2.89	116.27	109.02
3	B	302	MEF	C4-N3-C2	2.97	120.06	115.94
2	C	301	FAD	O2A-PA-O1A	3.02	128.88	112.53
3	B	302	MEF	C4-C4A-C8A	3.10	116.90	114.43
3	B	302	MEF	C2-N1-C8A	3.11	121.52	114.54
2	A	301	FAD	C2B-C1B-N9A	3.22	119.21	114.29

Continued on next page...

Continued from previous page...

Mol	Chain	Res	Type	Atoms	Z	Observed(°)	Ideal(°)
3	B	302	MEF	C7-C6-N5	3.26	115.85	108.79
3	D	302	MEF	C7-C6-N5	3.27	115.88	108.79
2	B	301	FAD	C1'-N10-C9A	3.39	122.67	118.86
3	D	302	MEF	C2-N1-C8A	3.49	122.39	114.54
2	B	301	FAD	C2B-C1B-N9A	3.64	119.85	114.29
2	D	301	FAD	C5X-C9A-N10	3.87	120.56	117.62
2	B	301	FAD	C5X-C9A-N10	3.90	120.58	117.62
3	B	302	MEF	C9-C6-N5	3.94	108.01	101.68
3	D	302	MEF	C9-C6-N5	4.10	108.28	101.68
3	B	302	MEF	NA2-C2-N3	4.19	124.13	117.20
2	D	301	FAD	C1'-N10-C9A	4.48	123.89	118.86
2	B	301	FAD	C4-C4X-N5	5.40	125.27	118.72
3	D	302	MEF	NA2-C2-N3	5.68	126.61	117.20
2	B	301	FAD	C4-N3-C2	8.86	122.90	115.25
2	D	301	FAD	C4-N3-C2	10.05	123.93	115.25

There are no chirality outliers.

There are no torsion outliers.

There are no ring outliers.

5 monomers are involved in 9 short contacts:

Mol	Chain	Res	Type	Clashes	Symm-Clashes
2	A	301	FAD	3	0
2	B	301	FAD	2	0
2	C	301	FAD	1	0
2	D	301	FAD	2	0
3	D	302	MEF	1	0

5.7 Other polymers [i](#)

There are no such residues in this entry.

5.8 Polymer linkage issues [i](#)

There are no chain breaks in this entry.

6 Fit of model and data

6.1 Protein, DNA and RNA chains

In the following table, the column labelled ‘#RSRZ> 2’ contains the number (and percentage) of RSRZ outliers, followed by percent RSRZ outliers for the chain as percentile scores relative to all X-ray entries and entries of similar resolution. The OWAB column contains the minimum, median, 95th percentile and maximum values of the occupancy-weighted average B-factor per residue. The column labelled ‘Q< 0.9’ lists the number of (and percentage) of residues with an average occupancy less than 0.9.

Mol	Chain	Analysed	<RSRZ>	#RSRZ>2	OWAB(Å ²)	Q<0.9
1	A	215/232 (92%)	0.58	20 (9%) 11 12	21, 35, 62, 75	0
1	B	214/232 (92%)	0.57	21 (9%) 10 11	22, 37, 69, 86	0
1	C	217/232 (93%)	0.28	15 (6%) 20 22	22, 35, 61, 79	0
1	D	214/232 (92%)	0.42	15 (7%) 19 21	22, 37, 67, 91	0
All	All	860/928 (92%)	0.46	71 (8%) 14 15	21, 36, 65, 91	0

All (71) RSRZ outliers are listed below:

Mol	Chain	Res	Type	RSRZ
1	A	33	MET	6.8
1	D	32	ASP	5.1
1	B	31	PHE	5.1
1	A	108	GLY	4.8
1	B	91	TYR	4.8
1	D	109	TYR	4.7
1	C	31	PHE	4.5
1	B	0	HIS	4.3
1	C	109	TYR	4.3
1	D	107	GLU	4.2
1	C	220	VAL	4.1
1	A	106	LEU	4.1
1	A	107	GLU	3.9
1	D	40	ARG	3.9
1	B	220	VAL	3.8
1	B	113	ILE	3.8
1	B	40	ARG	3.7
1	A	110	LYS	3.7
1	A	93	LYS	3.6
1	C	138	GLU	3.6
1	A	39	GLU	3.6

Continued on next page...

Continued from previous page...

Mol	Chain	Res	Type	RSRZ
1	D	108	GLY	3.6
1	A	-1	HIS	3.5
1	B	90	ARG	3.5
1	D	37	ASP	3.4
1	A	30	SER	3.4
1	A	40	ARG	3.3
1	B	81	ILE	3.2
1	A	112	THR	3.1
1	B	89	GLY	3.1
1	A	217	GLU	3.1
1	B	38	GLU	3.1
1	D	39	GLU	3.1
1	D	106	LEU	3.1
1	A	32	ASP	2.9
1	A	138	GLU	2.7
1	C	143	ARG	2.7
1	B	112	THR	2.7
1	B	114	PRO	2.7
1	D	138	GLU	2.6
1	B	88	SER	2.5
1	C	81	ILE	2.5
1	A	89	GLY	2.4
1	D	94	LEU	2.4
1	C	108	GLY	2.3
1	A	216	LYS	2.3
1	C	82	ALA	2.3
1	D	38	GLU	2.3
1	C	110	LYS	2.3
1	C	93	LYS	2.3
1	A	113	ILE	2.3
1	C	219	GLN	2.3
1	A	70	ILE	2.3
1	A	143	ARG	2.2
1	C	40	ARG	2.2
1	B	94	LEU	2.2
1	D	92	SER	2.2
1	B	108	GLY	2.2
1	C	107	GLU	2.2
1	B	211	LYS	2.2
1	D	113	ILE	2.2
1	B	106	LEU	2.2
1	C	84	TYR	2.2

Continued on next page...

Continued from previous page...

Mol	Chain	Res	Type	RSRZ
1	B	109	TYR	2.1
1	B	124	GLU	2.1
1	B	110	LYS	2.1
1	D	90	ARG	2.1
1	D	31	PHE	2.1
1	B	120	GLU	2.1
1	A	109	TYR	2.0
1	C	92	SER	2.0

6.2 Non-standard residues in protein, DNA, RNA chains [i](#)

There are no non-standard protein/DNA/RNA residues in this entry.

6.3 Carbohydrates [i](#)

There are no carbohydrates in this entry.

6.4 Ligands [i](#)

In the following table, the Atoms column lists the number of modelled atoms in the group and the number defined in the chemical component dictionary. LLDF column lists the quality of electron density of the group with respect to its neighbouring residues in protein, DNA or RNA chains. The B-factors column lists the minimum, median, 95th percentile and maximum values of B factors of atoms in the group. The column labelled 'Q< 0.9' lists the number of atoms with occupancy less than 0.9.

Mol	Type	Chain	Res	Atoms	RSCC	RSR	LLDF	B-factors(Å ²)	Q<0.9
3	MEF	B	302	15/33	0.36	0.43	9.93	67,73,75,75	0
3	MEF	D	302	15/33	0.64	0.36	4.83	51,64,67,67	0
2	FAD	A	301	35/53	0.88	0.17	0.72	30,46,60,65	0
2	FAD	C	301	35/53	0.91	0.14	-0.13	28,46,55,57	0
2	FAD	B	301	53/53	0.89	0.15	-0.26	30,48,57,61	0
2	FAD	D	301	53/53	0.93	0.12	-0.76	31,40,49,52	0

6.5 Other polymers [i](#)

There are no such residues in this entry.