



Full wwPDB X-ray Structure Validation Report ⓘ

Feb 1, 2016 – 05:08 PM GMT

PDB ID : 4H6B
Title : Structural basis for allene oxide cyclization in moss
Authors : Neumann, P.; Ficner, R.
Deposited on : 2012-09-19
Resolution : 1.35 Å(reported)

This is a Full wwPDB X-ray Structure Validation Report for a publicly released PDB entry.
We welcome your comments at validation@mail.wwpdb.org
A user guide is available at
<http://wwpdb.org/validation/2016/XrayValidationReportHelp>
with specific help available everywhere you see the ⓘ symbol.

The following versions of software and data (see [references ⓘ](#)) were used in the production of this report:

MolProbity : 4.02b-467
Mogul : 1.7 (RC4), CSD as536be (2015)
Xtriage (Phenix) : 1.9-1692
EDS : rb-20026688
Percentile statistics : 20151230.v01 (using entries in the PDB archive December 30th 2015)
Refmac : 5.8.0135
CCP4 : 6.5.0
Ideal geometry (proteins) : Engh & Huber (2001)
Ideal geometry (DNA, RNA) : Parkinson et al. (1996)
Validation Pipeline (wwPDB-VP) : trunk26865

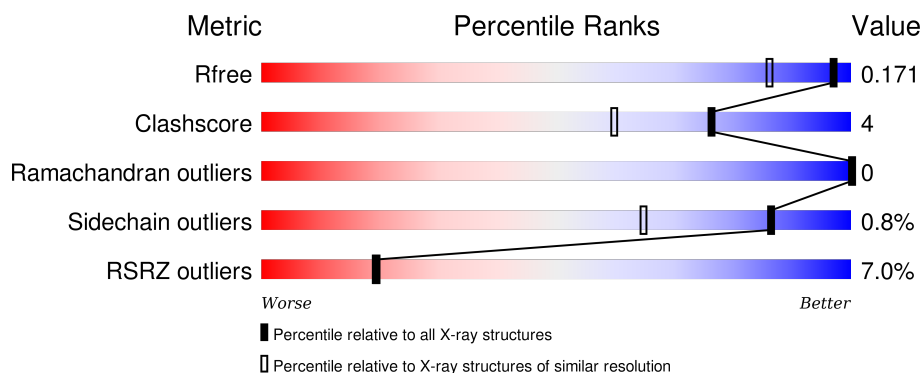
1 Overall quality at a glance

The following experimental techniques were used to determine the structure:

X-RAY DIFFRACTION

The reported resolution of this entry is 1.35 Å.

Percentile scores (ranging between 0-100) for global validation metrics of the entry are shown in the following graphic. The table shows the number of entries on which the scores are based.






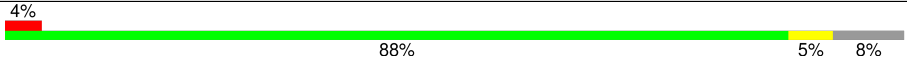
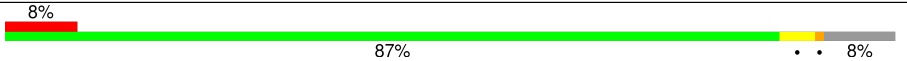
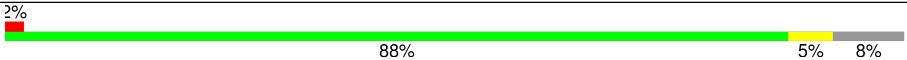
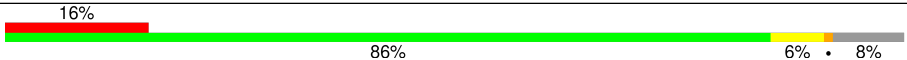
Metric	Whole archive (#Entries)	Similar resolution (#Entries, resolution range(Å))
R_{free}	91344	2199 (1.40-1.32)
Clashscore	102246	2337 (1.40-1.32)
Ramachandran outliers	100387	2280 (1.40-1.32)
Sidechain outliers	100360	2279 (1.40-1.32)
RSRZ outliers	91569	2199 (1.40-1.32)

The table below summarises the geometric issues observed across the polymeric chains and their fit to the electron density. The red, orange, yellow and green segments on the lower bar indicate the fraction of residues that contain outliers for ≥ 3 , 2, 1 and 0 types of geometric quality criteria. A grey segment represents the fraction of residues that are not modelled. The numeric value for each fraction is indicated below the corresponding segment, with a dot representing fractions $\leq 5\%$. The upper red bar (where present) indicates the fraction of residues that have poor fit to the electron density. The numeric value is given above the bar.

Mol	Chain	Length	Quality of chain
1	A	195	<div> <div>4%</div> <div>86% 6% 8%</div> </div>
1	B	195	<div> <div>6%</div> <div>86% 7% 8%</div> </div>
1	C	195	<div> <div>10%</div> <div>85% 7% 8%</div> </div>
1	D	195	<div> <div>2%</div> <div>87% 6% 8%</div> </div>
1	E	195	<div> <div>2%</div> <div>85% 7% 8%</div> </div>

Continued on next page...

Continued from previous page...

Mol	Chain	Length	Quality of chain
1	F	195	
1	G	195	
1	H	195	
1	I	195	
1	J	195	
1	K	195	
1	L	195	

The following table lists non-polymeric compounds, carbohydrate monomers and non-standard residues in protein, DNA, RNA chains that are outliers for geometric or electron-density-fit criteria:

Mol	Type	Chain	Res	Chirality	Geometry	Clashes	Electron density
2	10X	A	201[A]	-	-	-	X
2	10X	B	301	-	-	-	X
2	10X	J	203	-	-	-	X
3	10Y	A	202[B]	-	-	-	X
3	10Y	G	203	-	-	-	X
4	PO4	A	203	-	-	-	X
4	PO4	A	204	-	-	X	X
4	PO4	B	303	-	-	X	-
4	PO4	D	203	-	-	-	X
4	PO4	E	203	-	-	-	X
4	PO4	F	303	-	-	X	X
4	PO4	G	201	-	-	-	X
4	PO4	G	202	-	-	-	X
4	PO4	H	202	-	-	-	X
4	PO4	I	203	-	-	-	X
4	PO4	J	201	-	-	-	X
4	PO4	J	202	-	-	-	X
4	PO4	K	203	-	-	-	X
4	PO4	L	202	-	-	-	X
5	HEZ	B	304	-	-	-	X
5	HEZ	C	202	-	-	-	X
5	HEZ	D	201	-	-	-	X
5	HEZ	E	201	-	-	-	X
5	HEZ	F	301	-	-	-	X
5	HEZ	F	305	-	-	-	X

Continued on next page...

Continued from previous page...

Mol	Type	Chain	Res	Chirality	Geometry	Clashes	Electron density
5	HEZ	H	203	-	-	-	X
5	HEZ	I	201	-	-	-	X
5	HEZ	K	201	-	-	-	X

2 Entry composition

There are 6 unique types of molecules in this entry. The entry contains 19972 atoms, of which 0 are hydrogens and 0 are deuteriums.

In the tables below, the ZeroOcc column contains the number of atoms modelled with zero occupancy, the AltConf column contains the number of residues with at least one atom in alternate conformation and the Trace column contains the number of residues modelled with at most 2 atoms.

- Molecule 1 is a protein called Allene oxide cyclase.

Mol	Chain	Residues	Atoms					ZeroOcc	AltConf	Trace
1	A	180	Total	C	N	O	S	0	4	0
			1438	930	237	266	5			
1	D	180	Total	C	N	O	S	0	6	0
			1446	937	236	268	5			
1	C	180	Total	C	N	O	S	0	1	0
			1409	914	230	260	5			
1	B	180	Total	C	N	O	S	0	6	0
			1451	940	239	267	5			
1	E	180	Total	C	N	O	S	0	2	0
			1416	918	231	262	5			
1	F	180	Total	C	N	O	S	0	2	0
			1422	920	235	262	5			
1	G	180	Total	C	N	O	S	0	2	0
			1419	920	232	262	5			
1	H	180	Total	C	N	O	S	0	4	0
			1435	930	236	264	5			
1	I	180	Total	C	N	O	S	0	3	0
			1426	927	232	262	5			
1	J	180	Total	C	N	O	S	0	3	0
			1426	927	232	262	5			
1	K	180	Total	C	N	O	S	0	0	0
			1402	909	229	259	5			
1	L	180	Total	C	N	O	S	0	1	0
			1411	914	231	261	5			

There are 72 discrepancies between the modelled and reference sequences:

Chain	Residue	Modelled	Actual	Comment	Reference
A	-5	GLY	-	EXPRESSION TAG	UNP Q8GS38
A	-4	GLY	-	EXPRESSION TAG	UNP Q8GS38
A	-3	PRO	-	EXPRESSION TAG	UNP Q8GS38
A	-2	LEU	-	EXPRESSION TAG	UNP Q8GS38
A	-1	GLY	-	EXPRESSION TAG	UNP Q8GS38

Continued on next page...

Continued from previous page...

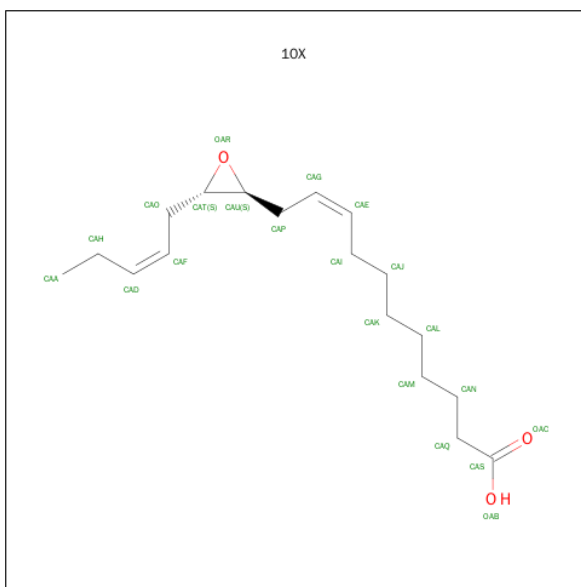
Chain	Residue	Modelled	Actual	Comment	Reference
A	0	SER	-	EXPRESSION TAG	UNP Q8GS38
D	-5	GLY	-	EXPRESSION TAG	UNP Q8GS38
D	-4	GLY	-	EXPRESSION TAG	UNP Q8GS38
D	-3	PRO	-	EXPRESSION TAG	UNP Q8GS38
D	-2	LEU	-	EXPRESSION TAG	UNP Q8GS38
D	-1	GLY	-	EXPRESSION TAG	UNP Q8GS38
D	0	SER	-	EXPRESSION TAG	UNP Q8GS38
C	-5	GLY	-	EXPRESSION TAG	UNP Q8GS38
C	-4	GLY	-	EXPRESSION TAG	UNP Q8GS38
C	-3	PRO	-	EXPRESSION TAG	UNP Q8GS38
C	-2	LEU	-	EXPRESSION TAG	UNP Q8GS38
C	-1	GLY	-	EXPRESSION TAG	UNP Q8GS38
C	0	SER	-	EXPRESSION TAG	UNP Q8GS38
B	-5	GLY	-	EXPRESSION TAG	UNP Q8GS38
B	-4	GLY	-	EXPRESSION TAG	UNP Q8GS38
B	-3	PRO	-	EXPRESSION TAG	UNP Q8GS38
B	-2	LEU	-	EXPRESSION TAG	UNP Q8GS38
B	-1	GLY	-	EXPRESSION TAG	UNP Q8GS38
B	0	SER	-	EXPRESSION TAG	UNP Q8GS38
E	-5	GLY	-	EXPRESSION TAG	UNP Q8GS38
E	-4	GLY	-	EXPRESSION TAG	UNP Q8GS38
E	-3	PRO	-	EXPRESSION TAG	UNP Q8GS38
E	-2	LEU	-	EXPRESSION TAG	UNP Q8GS38
E	-1	GLY	-	EXPRESSION TAG	UNP Q8GS38
E	0	SER	-	EXPRESSION TAG	UNP Q8GS38
F	-5	GLY	-	EXPRESSION TAG	UNP Q8GS38
F	-4	GLY	-	EXPRESSION TAG	UNP Q8GS38
F	-3	PRO	-	EXPRESSION TAG	UNP Q8GS38
F	-2	LEU	-	EXPRESSION TAG	UNP Q8GS38
F	-1	GLY	-	EXPRESSION TAG	UNP Q8GS38
F	0	SER	-	EXPRESSION TAG	UNP Q8GS38
G	-5	GLY	-	EXPRESSION TAG	UNP Q8GS38
G	-4	GLY	-	EXPRESSION TAG	UNP Q8GS38
G	-3	PRO	-	EXPRESSION TAG	UNP Q8GS38
G	-2	LEU	-	EXPRESSION TAG	UNP Q8GS38
G	-1	GLY	-	EXPRESSION TAG	UNP Q8GS38
G	0	SER	-	EXPRESSION TAG	UNP Q8GS38
H	-5	GLY	-	EXPRESSION TAG	UNP Q8GS38
H	-4	GLY	-	EXPRESSION TAG	UNP Q8GS38
H	-3	PRO	-	EXPRESSION TAG	UNP Q8GS38
H	-2	LEU	-	EXPRESSION TAG	UNP Q8GS38
H	-1	GLY	-	EXPRESSION TAG	UNP Q8GS38

Continued on next page...

Continued from previous page...

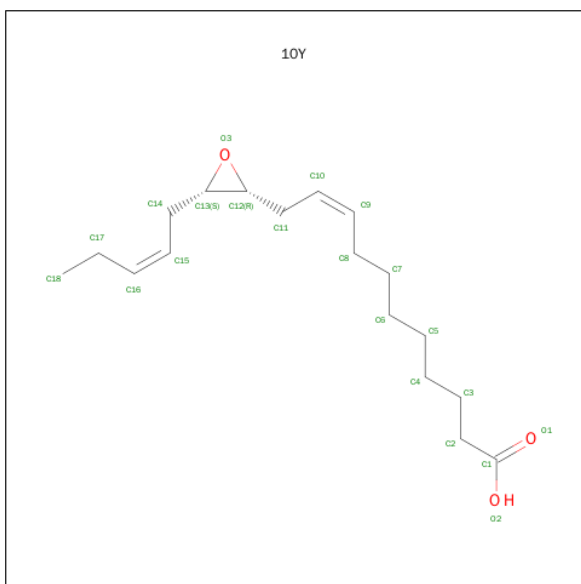
Chain	Residue	Modelled	Actual	Comment	Reference
H	0	SER	-	EXPRESSION TAG	UNP Q8GS38
I	-5	GLY	-	EXPRESSION TAG	UNP Q8GS38
I	-4	GLY	-	EXPRESSION TAG	UNP Q8GS38
I	-3	PRO	-	EXPRESSION TAG	UNP Q8GS38
I	-2	LEU	-	EXPRESSION TAG	UNP Q8GS38
I	-1	GLY	-	EXPRESSION TAG	UNP Q8GS38
I	0	SER	-	EXPRESSION TAG	UNP Q8GS38
J	-5	GLY	-	EXPRESSION TAG	UNP Q8GS38
J	-4	GLY	-	EXPRESSION TAG	UNP Q8GS38
J	-3	PRO	-	EXPRESSION TAG	UNP Q8GS38
J	-2	LEU	-	EXPRESSION TAG	UNP Q8GS38
J	-1	GLY	-	EXPRESSION TAG	UNP Q8GS38
J	0	SER	-	EXPRESSION TAG	UNP Q8GS38
K	-5	GLY	-	EXPRESSION TAG	UNP Q8GS38
K	-4	GLY	-	EXPRESSION TAG	UNP Q8GS38
K	-3	PRO	-	EXPRESSION TAG	UNP Q8GS38
K	-2	LEU	-	EXPRESSION TAG	UNP Q8GS38
K	-1	GLY	-	EXPRESSION TAG	UNP Q8GS38
K	0	SER	-	EXPRESSION TAG	UNP Q8GS38
L	-5	GLY	-	EXPRESSION TAG	UNP Q8GS38
L	-4	GLY	-	EXPRESSION TAG	UNP Q8GS38
L	-3	PRO	-	EXPRESSION TAG	UNP Q8GS38
L	-2	LEU	-	EXPRESSION TAG	UNP Q8GS38
L	-1	GLY	-	EXPRESSION TAG	UNP Q8GS38
L	0	SER	-	EXPRESSION TAG	UNP Q8GS38

- Molecule 2 is (9Z)-11-[(2S,3S)-3-[(2Z)-PENT-2-EN-1-YL]OXIRAN-2-YL]UNDEC-9-ENOIC ACID (three-letter code: 10X) (formula: C₁₈H₃₀O₃).



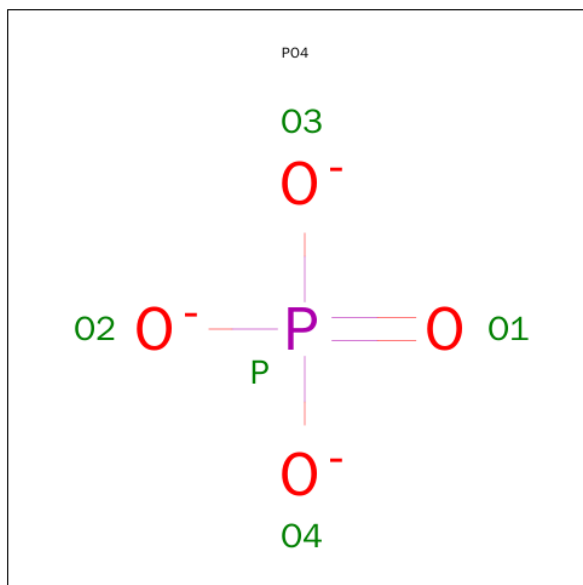
Mol	Chain	Residues	Atoms			ZeroOcc	AltConf
2	A	1	Total	C	O	0	1
			21	18	3		
2	B	1	Total	C	O	0	0
			21	18	3		
2	J	1	Total	C	O	0	0
			21	18	3		

- Molecule 3 is (9Z)-11-{(2R,3S)-3-[(2Z)-PENT-2-EN-1-YL]OXIRAN-2-YL}UNDEC-9-ENOIC ACID (three-letter code: 10Y) (formula: C₁₈H₃₀O₃).



Mol	Chain	Residues	Atoms			ZeroOcc	AltConf
3	A	1	Total	C	O	0	1
			21	18	3		
3	G	1	Total	C	O	0	0
			21	18	3		

- Molecule 4 is PHOSPHATE ION (three-letter code: PO4) (formula: O₄P).



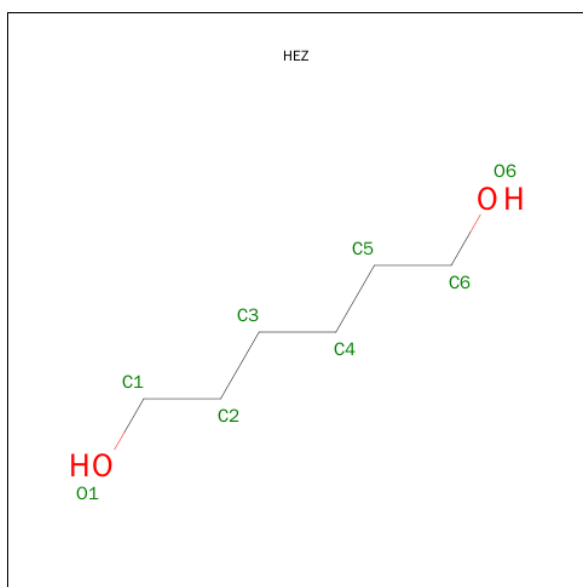
Mol	Chain	Residues	Atoms			ZeroOcc	AltConf
4	A	1	Total	O	P	0	0
			5	4	1		
4	A	1	Total	O	P	0	0
			5	4	1		
4	D	1	Total	O	P	0	0
			5	4	1		
4	D	1	Total	O	P	0	0
			5	4	1		
4	C	1	Total	O	P	0	0
			5	4	1		
4	B	1	Total	O	P	0	0
			5	4	1		
4	B	1	Total	O	P	0	0
			5	4	1		
4	E	1	Total	O	P	0	0
			5	4	1		
4	E	1	Total	O	P	0	0
			5	4	1		
4	F	1	Total	O	P	0	0
			5	4	1		

Continued on next page...

Continued from previous page...

Mol	Chain	Residues	Atoms			ZeroOcc	AltConf
4	F	1	Total	O	P	0	0
			5	4	1		
4	G	1	Total	O	P	0	0
			5	4	1		
4	G	1	Total	O	P	0	0
			5	4	1		
4	H	1	Total	O	P	0	0
			5	4	1		
4	H	1	Total	O	P	0	0
			5	4	1		
4	I	1	Total	O	P	0	0
			5	4	1		
4	I	1	Total	O	P	0	0
			5	4	1		
4	J	1	Total	O	P	0	0
			5	4	1		
4	J	1	Total	O	P	0	0
			5	4	1		
4	K	1	Total	O	P	0	0
			5	4	1		
4	K	1	Total	O	P	0	0
			5	4	1		
4	L	1	Total	O	P	0	0
			5	4	1		
4	L	1	Total	O	P	0	0
			5	4	1		

- Molecule 5 is HEXANE-1,6-DIOL (three-letter code: HEZ) (formula: C₆H₁₄O₂).



Mol	Chain	Residues	Atoms			ZeroOcc	AltConf
5	D	1	Total	C	O	0	0
			8	6	2		
5	C	1	Total	C	O	0	0
			8	6	2		
5	B	1	Total	C	O	0	0
			8	6	2		
5	E	1	Total	C	O	0	0
			8	6	2		
5	F	1	Total	C	O	0	0
			8	6	2		
5	F	1	Total	C	O	0	0
			8	6	2		
5	H	1	Total	C	O	0	0
			8	6	2		
5	I	1	Total	C	O	0	0
			8	6	2		
5	K	1	Total	C	O	0	0
			8	6	2		

- Molecule 6 is water.

Mol	Chain	Residues	Atoms		ZeroOcc	AltConf
6	A	221	Total	O	0	0
			221	221		
6	D	325	Total	O	0	0
			325	325		

Continued on next page...

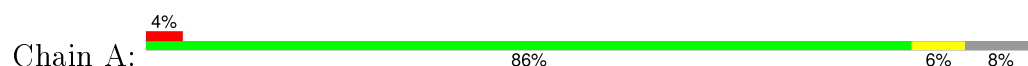
Continued from previous page...

Mol	Chain	Residues	Atoms		ZeroOcc	AltConf
6	C	198	Total 198	O 198	0	0
6	B	230	Total 230	O 230	0	0
6	E	269	Total 269	O 269	0	0
6	F	192	Total 192	O 192	0	0
6	G	188	Total 188	O 188	0	0
6	H	169	Total 169	O 169	0	0
6	I	196	Total 196	O 196	0	0
6	J	185	Total 185	O 185	0	0
6	K	256	Total 256	O 256	0	0
6	L	142	Total 142	O 142	0	0

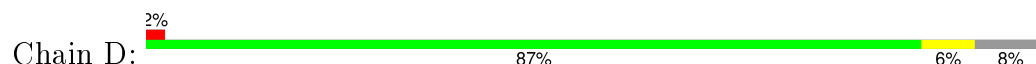
3 Residue-property plots [i](#)

These plots are drawn for all protein, RNA and DNA chains in the entry. The first graphic for a chain summarises the proportions of errors displayed in the second graphic. The second graphic shows the sequence view annotated by issues in geometry and electron density. Residues are color-coded according to the number of geometric quality criteria for which they contain at least one outlier: green = 0, yellow = 1, orange = 2 and red = 3 or more. A red dot above a residue indicates a poor fit to the electron density ($RSRZ > 2$). Stretches of 2 or more consecutive residues without any outlier are shown as a green connector. Residues present in the sample, but not in the model, are shown in grey.

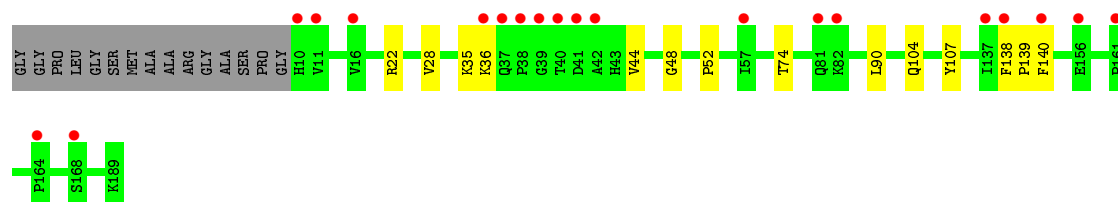
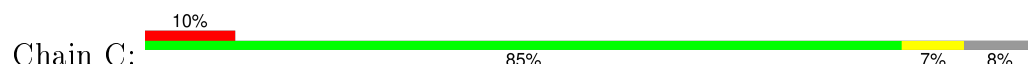
- Molecule 1: Allene oxide cyclase



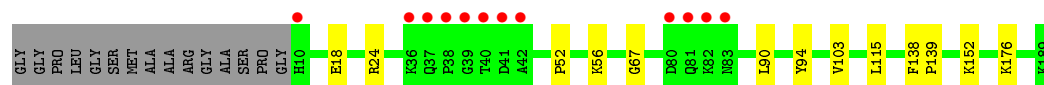
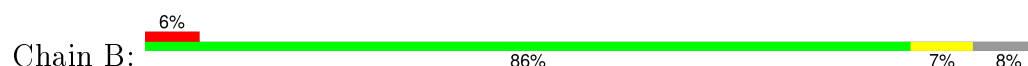
- Molecule 1: Allene oxide cyclase



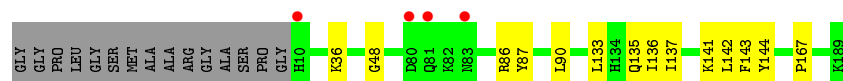
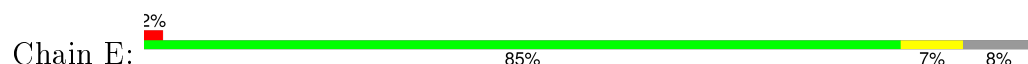
- Molecule 1: Allene oxide cyclase



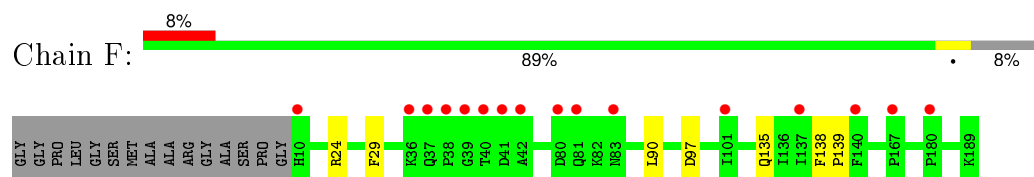
- Molecule 1: Allene oxide cyclase



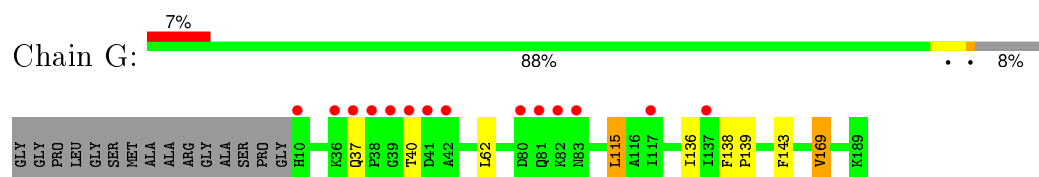
- Molecule 1: Allene oxide cyclase



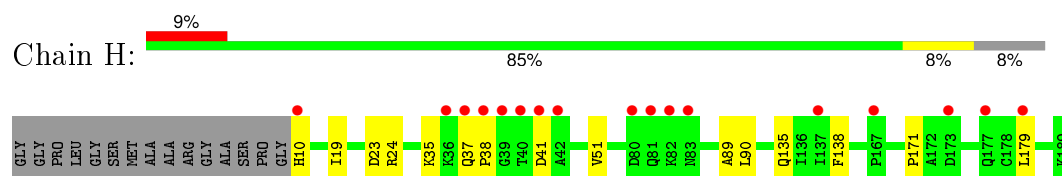
- Molecule 1: Allene oxide cyclase



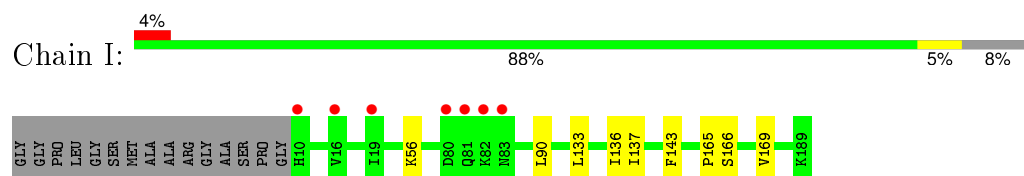
- Molecule 1: Allene oxide cyclase



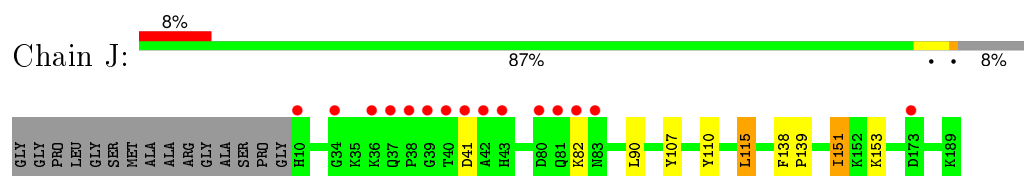
- Molecule 1: Allene oxide cyclase



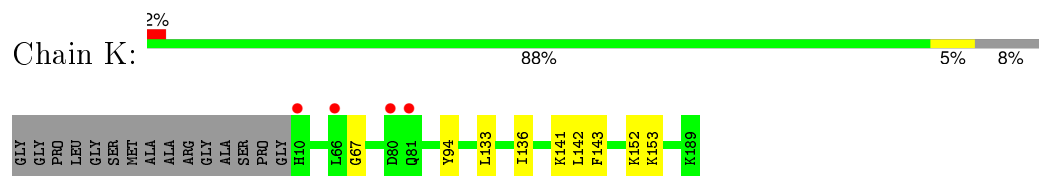
- Molecule 1: Allene oxide cyclase



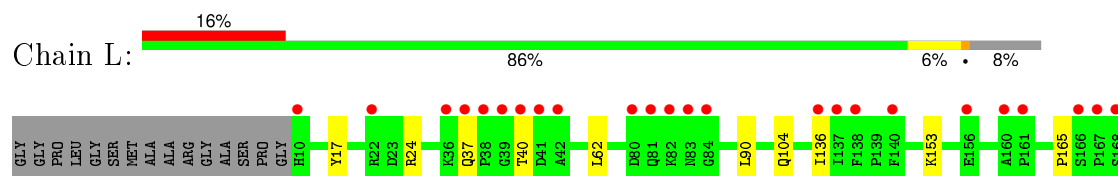
- Molecule 1: Allene oxide cyclase

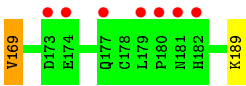


- Molecule 1: Allene oxide cyclase



- Molecule 1: Allene oxide cyclase





4 Data and refinement statistics

Property	Value	Source
Space group	P 1	Depositor
Cell constants a, b, c, α , β , γ	67.42Å 67.51Å 161.88Å 84.36° 79.15° 62.13°	Depositor
Resolution (Å)	19.85 – 1.35 19.85 – 1.35	Depositor EDS
% Data completeness (in resolution range)	92.8 (19.85-1.35) 92.5 (19.85-1.35)	Depositor EDS
R_{merge}	0.03	Depositor
R_{sym}	0.00	Depositor
$\langle I/\sigma(I) \rangle$ ¹	1.92 (at 1.35Å)	Xtriage
Refinement program	REFMAC 5.6.0117	Depositor
R, R_{free}	0.141 , 0.169 0.143 , 0.171	Depositor DCC
R_{free} test set	25276 reflections (5.26%)	DCC
Wilson B-factor (Å ²)	15.3	Xtriage
Anisotropy	0.228	Xtriage
Bulk solvent k_{sol} (e/Å ³), B_{sol} (Å ²)	0.39 , 54.5	EDS
Estimated twinning fraction	0.013 for h,h-k,h-l 0.008 for -h,-h+k,-l 0.005 for -h,-k,-h+l	Xtriage
L-test for twinning ²	$\langle L \rangle = 0.49$, $\langle L^2 \rangle = 0.32$	Xtriage
Outliers	0 of 505504 reflections	Xtriage
F_o, F_c correlation	0.98	EDS
Total number of atoms	19972	wwPDB-VP
Average B, all atoms (Å ²)	29.0	wwPDB-VP

Xtriage's analysis on translational NCS is as follows: *The largest off-origin peak in the Patterson function is 4.03% of the height of the origin peak. No significant pseudotranslation is detected.*

¹ Intensities estimated from amplitudes.

² Theoretical values of $\langle |L| \rangle$, $\langle L^2 \rangle$ for acentric reflections are 0.5, 0.375 respectively for untwinned datasets, and 0.333, 0.2 for perfectly twinned datasets.

5 Model quality

5.1 Standard geometry

Bond lengths and bond angles in the following residue types are not validated in this section: PO4, 10Y, 10X, HEZ

The Z score for a bond length (or angle) is the number of standard deviations the observed value is removed from the expected value. A bond length (or angle) with $|Z| > 5$ is considered an outlier worth inspection. RMSZ is the root-mean-square of all Z scores of the bond lengths (or angles).

Mol	Chain	Bond lengths		Bond angles	
		RMSZ	# $ Z > 5$	RMSZ	# $ Z > 5$
1	A	0.45	0/1481	0.62	0/2010
1	B	0.43	0/1494	0.60	0/2028
1	C	0.42	0/1452	0.59	0/1972
1	D	0.45	0/1489	0.63	0/2022
1	E	0.43	0/1459	0.61	1/1981 (0.1%)
1	F	0.43	0/1465	0.57	0/1988
1	G	0.41	0/1462	0.56	0/1985
1	H	0.40	0/1478	0.55	0/2006
1	I	0.39	0/1469	0.55	0/1995
1	J	0.40	0/1469	0.55	0/1995
1	K	0.40	0/1445	0.56	0/1962
1	L	0.39	0/1454	0.54	0/1974
All	All	0.42	0/17617	0.58	1/23918 (0.0%)

There are no bond length outliers.

All (1) bond angle outliers are listed below:

Mol	Chain	Res	Type	Atoms	Z	Observed(°)	Ideal(°)
1	E	86	ARG	NE-CZ-NH1	5.16	122.88	120.30

There are no chirality outliers.

There are no planarity outliers.

5.2 Too-close contacts

In the following table, the Non-H and H(model) columns list the number of non-hydrogen atoms and hydrogen atoms in the chain respectively. The H(added) column lists the number of hydrogen atoms added and optimized by MolProbity. The Clashes column lists the number of clashes within the asymmetric unit, whereas Symm-Clashes lists symmetry related clashes.

Mol	Chain	Non-H	H(model)	H(added)	Clashes	Symm-Clashes
1	A	1438	0	1394	14	0
1	B	1451	0	1412	18	0
1	C	1409	0	1369	12	0
1	D	1446	0	1408	10	0
1	E	1416	0	1375	11	0
1	F	1422	0	1380	12	0
1	G	1419	0	1378	6	0
1	H	1435	0	1397	8	0
1	I	1426	0	1391	8	0
1	J	1426	0	1391	7	0
1	K	1402	0	1361	6	0
1	L	1411	0	1368	7	0
2	A	21	0	29	3	0
2	B	21	0	29	3	0
2	J	21	0	29	7	0
3	A	21	0	29	4	0
3	G	21	0	29	2	0
4	A	10	0	0	2	0
4	B	10	0	0	3	0
4	C	5	0	0	0	0
4	D	10	0	0	0	0
4	E	10	0	0	0	0
4	F	10	0	0	3	0
4	G	10	0	0	0	0
4	H	10	0	0	0	0
4	I	10	0	0	0	0
4	J	10	0	0	0	0
4	K	10	0	0	0	0
4	L	10	0	0	0	0
5	B	8	0	14	0	0
5	C	8	0	14	1	0
5	D	8	0	14	1	0
5	E	8	0	14	1	0
5	F	24	0	42	3	0
5	H	8	0	14	1	0
5	I	8	0	14	0	0
5	K	8	0	14	0	0
6	A	221	0	0	0	0
6	B	230	0	0	2	0
6	C	198	0	0	4	0
6	D	325	0	0	2	0
6	E	269	0	0	4	0
6	F	192	0	0	1	0

Continued on next page...

Continued from previous page...

Mol	Chain	Non-H	H(model)	H(added)	Clashes	Symm-Clashes
6	G	188	0	0	0	0
6	H	169	0	0	1	0
6	I	196	0	0	2	0
6	J	185	0	0	0	0
6	K	256	0	0	2	0
6	L	142	0	0	0	0
All	All	19972	0	16909	129	0

The all-atom clashscore is defined as the number of clashes found per 1000 atoms (including hydrogen atoms). The all-atom clashscore for this structure is 4.

All (129) close contacts within the same asymmetric unit are listed below, sorted by their clash magnitude.

Atom-1	Atom-2	Interatomic distance (Å)	Clash overlap (Å)
1:F:24[B]:ARG:NH1	4:F:303:PO4:O1	1.70	1.24
2:J:203:10X:H9	2:J:203:10X:H2	1.24	1.18
1:F:24[B]:ARG:NH2	1:F:24[B]:ARG:HG2	1.54	1.08
1:B:24[B]:ARG:NH2	1:B:56:LYS:HE3	1.72	1.05
1:F:24[B]:ARG:HH21	1:F:24[B]:ARG:CG	1.70	1.04
1:B:24[B]:ARG:NH1	4:B:303:PO4:O4	1.94	1.00
1:B:24[B]:ARG:HH22	1:B:56:LYS:CE	1.74	1.00
1:B:24[B]:ARG:NH2	1:B:56:LYS:CE	2.25	0.99
1:A:24[B]:ARG:NH2	1:A:56:LYS:HE2	1.84	0.93
1:B:24[B]:ARG:HH22	1:B:56:LYS:HE2	1.35	0.89
2:J:203:10X:H11	2:J:203:10X:H16	1.58	0.86
1:F:24[B]:ARG:HH21	1:F:24[B]:ARG:HG2	0.75	0.85
2:J:203:10X:CAA	2:J:203:10X:H9	2.07	0.83
1:B:24[B]:ARG:HH12	4:B:303:PO4:P	2.02	0.81
2:J:203:10X:CAO	2:J:203:10X:H2	2.07	0.77
1:B:24[B]:ARG:HH21	1:B:56:LYS:HE3	1.48	0.77
1:L:24:ARG:NH1	1:L:189:LYS:O	2.21	0.73
2:B:301:10X:H11	2:B:301:10X:H16	1.75	0.69
1:B:24[B]:ARG:NH2	1:B:56:LYS:HE2	2.00	0.69
1:C:48:GLY:CA	6:C:474:HOH:O	2.42	0.68
5:F:301:HEZ:H61	6:F:459:HOH:O	1.94	0.67
1:J:90:LEU:HD13	1:L:90:LEU:HD13	1.76	0.67
2:J:203:10X:H11	2:J:203:10X:CAI	2.17	0.67
1:E:48:GLY:CA	6:E:502:HOH:O	2.42	0.66
1:I:136[A]:ILE:CD1	1:I:165:PRO:HB2	2.28	0.63
1:E:36:LYS:HE2	6:E:470:HOH:O	1.98	0.63
1:E:135:GLN:HG2	6:E:392:HOH:O	1.98	0.62

Continued on next page...

Continued from previous page...

Atom-1	Atom-2	Interatomic distance (Å)	Clash overlap (Å)
1:L:37:GLN:HB2	1:L:40:THR:OG1	2.00	0.61
1:H:37:GLN:OE1	1:H:38:PRO:HD2	2.00	0.61
1:F:24[B]:ARG:NH1	4:F:303:PO4:P	2.73	0.61
1:C:48:GLY:N	6:C:474:HOH:O	2.33	0.61
1:F:97:ASP:OD2	5:F:301:HEZ:H62	2.01	0.61
1:E:48:GLY:N	6:E:502:HOH:O	2.28	0.59
1:J:151[A]:ILE:H	1:J:151[A]:ILE:HD13	1.66	0.59
1:E:137[B]:ILE:HD11	1:E:167:PRO:HB3	1.85	0.58
1:D:61[A]:SER:OG	1:D:160:ALA:HB3	2.03	0.58
1:L:136:ILE:CD1	1:L:165:PRO:HB2	2.37	0.55
1:A:90:LEU:HD13	1:C:90:LEU:HD13	1.89	0.55
1:A:24[B]:ARG:HH21	1:A:56:LYS:HE2	1.69	0.55
1:K:153:LYS:HD2	6:K:475:HOH:O	2.07	0.54
1:G:115[A]:LEU:HD12	1:G:115[A]:LEU:N	2.23	0.54
1:A:24[B]:ARG:HH22	4:A:204:PO4:P	2.30	0.54
1:B:90:LEU:HD13	1:F:90:LEU:HD13	1.90	0.53
1:I:136[B]:ILE:HD11	1:I:143:PHE:HB2	1.91	0.53
1:L:62:LEU:HD11	1:L:169:VAL:HG13	1.90	0.52
1:I:56:LYS:NZ	6:I:479:HOH:O	2.41	0.52
2:J:203:10X:CAU	2:J:203:10X:H16	2.34	0.52
1:F:24[B]:ARG:NH2	1:F:24[B]:ARG:CG	2.41	0.52
3:A:202[B]:10Y:H19	3:A:202[B]:10Y:H13	1.92	0.51
1:D:36:LYS:HE2	6:D:557:HOH:O	2.09	0.51
1:H:19[B]:ILE:CD1	1:H:171:PRO:HD3	2.41	0.51
1:F:29:PHE:CD2	5:F:305:HEZ:H41	2.45	0.51
1:E:141:LYS:C	1:E:142:LEU:HD12	2.32	0.50
1:K:136:ILE:HD11	1:K:143:PHE:HB2	1.93	0.50
1:L:17:TYR:CE1	1:L:169:VAL:HG11	2.46	0.49
1:E:87:TYR:OH	5:E:201:HEZ:H61	2.11	0.49
1:A:18:GLU:OE2	2:A:201[A]:10X:H7	2.12	0.49
1:J:151[A]:ILE:N	1:J:151[A]:ILE:HD13	2.28	0.49
1:G:115[A]:LEU:CD1	1:G:115[A]:LEU:N	2.76	0.49
1:D:87:TYR:OH	5:D:201:HEZ:H12	2.13	0.48
1:C:48:GLY:HA2	6:C:474:HOH:O	2.10	0.48
1:B:103:VAL:HG21	1:B:115[A]:LEU:HD23	1.96	0.47
1:E:136:ILE:HD11	1:E:143:PHE:HB2	1.96	0.47
1:G:136:ILE:HD11	1:G:143:PHE:HB2	1.95	0.47
1:C:35:LYS:HB3	1:C:44[A]:VAL:HG13	1.96	0.47
1:A:24[B]:ARG:NH2	1:A:56:LYS:CE	2.67	0.47
1:B:176:LYS:NZ	6:B:555:HOH:O	2.48	0.47
1:A:23[B]:ASP:OD1	1:A:24[B]:ARG:HG3	2.15	0.47

Continued on next page...

Continued from previous page...

Atom-1	Atom-2	Interatomic distance (Å)	Clash overlap (Å)
3:A:202[B]:10Y:C7	3:A:202[B]:10Y:H19	2.46	0.46
1:F:135:GLN:NE2	1:F:138:PHE:HB2	2.30	0.46
1:E:133:LEU:HD11	1:E:142:LEU:HD23	1.98	0.46
1:K:133:LEU:C	1:K:133:LEU:HD23	2.35	0.46
3:G:203:10Y:H26	3:G:203:10Y:H18	1.98	0.45
1:F:24[B]:ARG:HH11	4:F:303:PO4:P	2.38	0.45
1:G:62:LEU:HD11	1:G:169:VAL:HG13	1.98	0.45
1:B:24[B]:ARG:NH1	4:B:303:PO4:P	2.76	0.45
1:I:136[A]:ILE:CD1	1:I:165:PRO:CB	2.94	0.45
1:A:136:ILE:HD11	1:A:143:PHE:HB2	1.99	0.45
1:B:152:LYS:HG2	6:B:626:HOH:O	2.16	0.45
1:A:24[B]:ARG:HH21	1:A:56:LYS:HG2	1.81	0.45
1:I:137:ILE:HD11	6:I:480:HOH:O	2.16	0.45
1:D:133:LEU:C	1:D:133:LEU:HD23	2.37	0.45
1:D:50:LEU:HD22	1:D:74[B]:THR:HG22	1.99	0.45
1:H:89:ALA:C	1:H:90:LEU:HD22	2.38	0.44
1:H:23:ASP:OD1	1:H:24[A]:ARG:HG3	2.17	0.44
3:A:202[B]:10Y:H22	3:A:202[B]:10Y:H26	1.64	0.44
1:C:138:PHE:HA	1:C:139:PRO:HA	1.77	0.44
1:J:107:TYR:CG	2:J:203:10X:H1	2.53	0.44
1:H:51:VAL:HG11	5:H:203:HEZ:H32	1.99	0.44
1:B:52:PRO:HG2	1:E:48:GLY:HA2	1.98	0.44
1:A:24[B]:ARG:NH2	4:A:204:PO4:O4	2.51	0.44
1:K:67:GLY:HA3	1:K:94:TYR:O	2.18	0.44
1:D:52:PRO:HG2	1:C:48:GLY:HA2	1.99	0.44
1:C:107:TYR:CE2	5:C:202:HEZ:H61	2.53	0.44
1:D:136:ILE:HD11	1:D:143:PHE:HB2	2.00	0.43
1:G:37:GLN:HB2	1:G:40:THR:OG1	2.18	0.43
1:C:28:VAL:O	1:C:52:PRO:HD2	2.19	0.43
1:G:138:PHE:HA	1:G:139:PRO:HA	1.84	0.43
1:D:74[B]:THR:HG23	6:D:313:HOH:O	2.19	0.42
1:C:22:ARG:HD3	1:C:140:PHE:CE1	2.54	0.42
2:A:201[A]:10X:H17	2:A:201[A]:10X:H13	1.57	0.42
1:C:90:LEU:HD23	1:C:104:GLN:HG3	2.00	0.42
1:D:61[A]:SER:OG	1:D:160:ALA:CB	2.67	0.42
1:A:104[B]:GLN:CD	1:A:118:THR:HG21	2.40	0.42
1:H:135:GLN:NE2	1:H:138:PHE:HB2	2.34	0.42
1:H:35:LYS:HD3	1:H:35:LYS:HA	1.90	0.42
1:B:103:VAL:CG2	1:B:115[A]:LEU:HD23	2.50	0.42
3:G:203:10Y:H22	3:G:203:10Y:H26	1.64	0.42
1:A:90:LEU:HD23	1:A:104[A]:GLN:HG3	2.01	0.42

Continued on next page...

Continued from previous page...

Atom-1	Atom-2	Interatomic distance (Å)	Clash overlap (Å)
2:A:201[A]:10X:H5	2:A:201[A]:10X:H9	1.72	0.42
1:K:141:LYS:C	1:K:142:LEU:HD12	2.40	0.41
1:A:53:PHE:CD2	3:A:202[B]:10Y:H21	2.56	0.41
1:J:138:PHE:HA	1:J:139:PRO:HA	1.89	0.41
1:J:115[A]:LEU:CD1	1:J:115[A]:LEU:N	2.83	0.41
1:J:82:LYS:HD3	1:J:110:TYR:CE2	2.56	0.41
1:A:72:LEU:HB2	1:D:74[B]:THR:HG21	2.02	0.41
1:I:166:SER:O	1:I:169:VAL:HG22	2.21	0.41
1:L:90:LEU:HD23	1:L:104[A]:GLN:HG3	2.02	0.41
1:F:138:PHE:HA	1:F:139:PRO:HA	1.87	0.41
1:B:67:GLY:HA3	1:B:94:TYR:O	2.21	0.41
2:B:301:10X:H5	2:B:301:10X:H9	1.83	0.41
1:K:152:LYS:HG2	6:K:528:HOH:O	2.20	0.41
1:I:133[A]:LEU:HD23	1:I:133[A]:LEU:C	2.41	0.41
1:I:136[A]:ILE:HD11	1:I:165:PRO:CB	2.52	0.40
1:B:18:GLU:OE2	2:B:301:10X:H7	2.21	0.40
1:C:74:THR:HG23	6:C:474:HOH:O	2.20	0.40
1:B:138:PHE:HA	1:B:139:PRO:HA	1.90	0.40
1:H:10:HIS:HB3	6:H:459:HOH:O	2.21	0.40
1:E:133:LEU:HD13	1:E:144:TYR:CE1	2.57	0.40

There are no symmetry-related clashes.

5.3 Torsion angles [i](#)

5.3.1 Protein backbone [i](#)

In the following table, the Percentiles column shows the percent Ramachandran outliers of the chain as a percentile score with respect to all X-ray entries followed by that with respect to entries of similar resolution.

The Analysed column shows the number of residues for which the backbone conformation was analysed, and the total number of residues.

Mol	Chain	Analysed	Favoured	Allowed	Outliers	Percentiles	
1	A	182/195 (93%)	181 (100%)	1 (0%)	0	100	100
1	B	184/195 (94%)	184 (100%)	0	0	100	100
1	C	179/195 (92%)	178 (99%)	1 (1%)	0	100	100
1	D	184/195 (94%)	183 (100%)	1 (0%)	0	100	100

Continued on next page...

Continued from previous page...

Mol	Chain	Analysed	Favoured	Allowed	Outliers	Percentiles	
1	E	180/195 (92%)	180 (100%)	0	0	100	100
1	F	180/195 (92%)	176 (98%)	4 (2%)	0	100	100
1	G	180/195 (92%)	179 (99%)	1 (1%)	0	100	100
1	H	182/195 (93%)	182 (100%)	0	0	100	100
1	I	181/195 (93%)	180 (99%)	1 (1%)	0	100	100
1	J	181/195 (93%)	179 (99%)	2 (1%)	0	100	100
1	K	178/195 (91%)	177 (99%)	1 (1%)	0	100	100
1	L	179/195 (92%)	176 (98%)	3 (2%)	0	100	100
All	All	2170/2340 (93%)	2155 (99%)	15 (1%)	0	100	100

There are no Ramachandran outliers to report.

5.3.2 Protein sidechains ⓘ

In the following table, the Percentiles column shows the percent sidechain outliers of the chain as a percentile score with respect to all X-ray entries followed by that with respect to entries of similar resolution.

The Analysed column shows the number of residues for which the sidechain conformation was analysed, and the total number of residues.

Mol	Chain	Analysed	Rotameric	Outliers	Percentiles	
1	A	154/157 (98%)	152 (99%)	2 (1%)	76	45
1	B	156/157 (99%)	156 (100%)	0	100	100
1	C	151/157 (96%)	150 (99%)	1 (1%)	88	68
1	D	156/157 (99%)	155 (99%)	1 (1%)	90	73
1	E	152/157 (97%)	151 (99%)	1 (1%)	88	68
1	F	152/157 (97%)	152 (100%)	0	100	100
1	G	152/157 (97%)	149 (98%)	3 (2%)	63	26
1	H	154/157 (98%)	152 (99%)	2 (1%)	76	45
1	I	153/157 (98%)	152 (99%)	1 (1%)	88	68
1	J	153/157 (98%)	147 (96%)	6 (4%)	39	7
1	K	150/157 (96%)	150 (100%)	0	100	100
1	L	151/157 (96%)	149 (99%)	2 (1%)	76	45
All	All	1834/1884 (97%)	1815 (99%)	19 (1%)	86	57

All (19) residues with a non-rotameric sidechain are listed below:

Mol	Chain	Res	Type
1	A	115[A]	LEU
1	A	115[B]	LEU
1	D	10	HIS
1	C	36	LYS
1	E	90	LEU
1	G	115[A]	LEU
1	G	115[B]	LEU
1	G	169	VAL
1	H	41	ASP
1	H	179	LEU
1	I	90	LEU
1	J	41	ASP
1	J	115[A]	LEU
1	J	115[B]	LEU
1	J	151[A]	ILE
1	J	151[B]	ILE
1	J	153	LYS
1	L	153	LYS
1	L	169	VAL

Some sidechains can be flipped to improve hydrogen bonding and reduce clashes. All (1) such sidechains are listed below:

Mol	Chain	Res	Type
1	F	37	GLN

5.3.3 RNA ⓘ

There are no RNA molecules in this entry.

5.4 Non-standard residues in protein, DNA, RNA chains ⓘ

There are no non-standard protein/DNA/RNA residues in this entry.

5.5 Carbohydrates ⓘ

There are no carbohydrates in this entry.

5.6 Ligand geometry ⓘ

38 ligands are modelled in this entry.

In the following table, the Counts columns list the number of bonds (or angles) for which Mogul statistics could be retrieved, the number of bonds (or angles) that are observed in the model and the number of bonds (or angles) that are defined in the chemical component dictionary. The Link column lists molecule types, if any, to which the group is linked. The Z score for a bond length (or angle) is the number of standard deviations the observed value is removed from the expected value. A bond length (or angle) with $|Z| > 2$ is considered an outlier worth inspection. RMSZ is the root-mean-square of all Z scores of the bond lengths (or angles).

Mol	Type	Chain	Res	Link	Bond lengths			Bond angles		
					Counts	RMSZ	# $ Z > 2$	Counts	RMSZ	# $ Z > 2$
2	10X	A	201[A]	-	18,21,21	1.54	4 (22%)	17,24,24	1.17	1 (5%)
3	10Y	A	202[B]	-	18,21,21	0.76	1 (5%)	17,24,24	1.60	5 (29%)
4	PO4	A	203	-	4,4,4	0.19	0	6,6,6	0.27	0
4	PO4	A	204	-	4,4,4	0.37	0	6,6,6	0.28	0
2	10X	B	301	-	18,21,21	1.49	4 (22%)	17,24,24	0.90	0
4	PO4	B	302	-	4,4,4	0.31	0	6,6,6	0.28	0
4	PO4	B	303	-	4,4,4	0.39	0	6,6,6	0.29	0
5	HEZ	B	304	-	7,7,7	0.41	0	6,6,6	0.35	0
4	PO4	C	201	-	4,4,4	0.32	0	6,6,6	0.27	0
5	HEZ	C	202	-	7,7,7	0.37	0	6,6,6	0.48	0
5	HEZ	D	201	-	7,7,7	0.41	0	6,6,6	0.90	0
4	PO4	D	202	-	4,4,4	0.26	0	6,6,6	0.26	0
4	PO4	D	203	-	4,4,4	0.41	0	6,6,6	0.27	0
5	HEZ	E	201	-	7,7,7	0.42	0	6,6,6	0.60	0
4	PO4	E	202	-	4,4,4	0.33	0	6,6,6	0.30	0
4	PO4	E	203	-	4,4,4	0.36	0	6,6,6	0.28	0
5	HEZ	F	301	-	7,7,7	0.27	0	6,6,6	0.62	0
4	PO4	F	302	-	4,4,4	0.26	0	6,6,6	0.31	0
4	PO4	F	303	-	4,4,4	0.49	0	6,6,6	0.28	0
5	HEZ	F	304	-	7,7,7	0.40	0	6,6,6	0.33	0
5	HEZ	F	305	-	7,7,7	0.47	0	6,6,6	0.75	0
4	PO4	G	201	-	4,4,4	0.27	0	6,6,6	0.27	0
4	PO4	G	202	-	4,4,4	0.35	0	6,6,6	0.28	0
3	10Y	G	203	-	18,21,21	0.79	1 (5%)	17,24,24	1.55	4 (23%)
4	PO4	H	201	-	4,4,4	0.41	0	6,6,6	0.32	0
4	PO4	H	202	-	4,4,4	0.38	0	6,6,6	0.27	0
5	HEZ	H	203	-	7,7,7	0.33	0	6,6,6	0.51	0
5	HEZ	I	201	-	7,7,7	0.37	0	6,6,6	0.54	0
4	PO4	I	202	-	4,4,4	0.26	0	6,6,6	0.28	0
4	PO4	I	203	-	4,4,4	0.28	0	6,6,6	0.28	0
4	PO4	J	201	-	4,4,4	0.22	0	6,6,6	0.31	0

Mol	Type	Chain	Res	Link	Bond lengths			Bond angles		
					Counts	RMSZ	# Z > 2	Counts	RMSZ	# Z > 2
4	PO4	J	202	-	4,4,4	0.46	0	6,6,6	0.28	0
2	10X	J	203	-	18,21,21	1.50	4 (22%)	17,24,24	0.83	0
5	HEZ	K	201	-	7,7,7	0.36	0	6,6,6	0.70	0
4	PO4	K	202	-	4,4,4	0.43	0	6,6,6	0.27	0
4	PO4	K	203	-	4,4,4	0.25	0	6,6,6	0.26	0
4	PO4	L	201	-	4,4,4	0.40	0	6,6,6	0.29	0
4	PO4	L	202	-	4,4,4	0.41	0	6,6,6	0.28	0

In the following table, the Chirals column lists the number of chiral outliers, the number of chiral centers analysed, the number of these observed in the model and the number defined in the chemical component dictionary. Similar counts are reported in the Torsion and Rings columns. '-' means no outliers of that kind were identified.

Mol	Type	Chain	Res	Link	Chirals	Torsions	Rings
2	10X	A	201[A]	-	-	0/16/23/23	0/0/1/1
3	10Y	A	202[B]	-	-	0/16/23/23	0/0/1/1
4	PO4	A	203	-	-	0/0/0/0	0/0/0/0
4	PO4	A	204	-	-	0/0/0/0	0/0/0/0
2	10X	B	301	-	-	0/16/23/23	0/0/1/1
4	PO4	B	302	-	-	0/0/0/0	0/0/0/0
4	PO4	B	303	-	-	0/0/0/0	0/0/0/0
5	HEZ	B	304	-	-	0/5/5/5	0/0/0/0
4	PO4	C	201	-	-	0/0/0/0	0/0/0/0
5	HEZ	C	202	-	-	0/5/5/5	0/0/0/0
5	HEZ	D	201	-	-	0/5/5/5	0/0/0/0
4	PO4	D	202	-	-	0/0/0/0	0/0/0/0
4	PO4	D	203	-	-	0/0/0/0	0/0/0/0
5	HEZ	E	201	-	-	0/5/5/5	0/0/0/0
4	PO4	E	202	-	-	0/0/0/0	0/0/0/0
4	PO4	E	203	-	-	0/0/0/0	0/0/0/0
5	HEZ	F	301	-	-	0/5/5/5	0/0/0/0
4	PO4	F	302	-	-	0/0/0/0	0/0/0/0
4	PO4	F	303	-	-	0/0/0/0	0/0/0/0
5	HEZ	F	304	-	-	0/5/5/5	0/0/0/0
5	HEZ	F	305	-	-	0/5/5/5	0/0/0/0
4	PO4	G	201	-	-	0/0/0/0	0/0/0/0
4	PO4	G	202	-	-	0/0/0/0	0/0/0/0
3	10Y	G	203	-	-	0/16/23/23	0/0/1/1
4	PO4	H	201	-	-	0/0/0/0	0/0/0/0
4	PO4	H	202	-	-	0/0/0/0	0/0/0/0
5	HEZ	H	203	-	-	0/5/5/5	0/0/0/0
5	HEZ	I	201	-	-	0/5/5/5	0/0/0/0

Continued on next page...

Continued from previous page...

Mol	Type	Chain	Res	Link	Chirals	Torsions	Rings
4	PO4	I	202	-	-	0/0/0/0	0/0/0/0
4	PO4	I	203	-	-	0/0/0/0	0/0/0/0
4	PO4	J	201	-	-	0/0/0/0	0/0/0/0
4	PO4	J	202	-	-	0/0/0/0	0/0/0/0
2	10X	J	203	-	-	0/16/23/23	0/0/1/1
5	HEZ	K	201	-	-	0/5/5/5	0/0/0/0
4	PO4	K	202	-	-	0/0/0/0	0/0/0/0
4	PO4	K	203	-	-	0/0/0/0	0/0/0/0
4	PO4	L	201	-	-	0/0/0/0	0/0/0/0
4	PO4	L	202	-	-	0/0/0/0	0/0/0/0

All (14) bond length outliers are listed below:

Mol	Chain	Res	Type	Atoms	Z	Observed(Å)	Ideal(Å)
2	A	201[A]	10X	CAP-CAG	-3.33	1.39	1.50
2	A	201[A]	10X	CAO-CAF	-3.28	1.39	1.50
2	J	203	10X	CAO-CAF	-3.19	1.39	1.50
2	B	301	10X	CAP-CAG	-3.19	1.39	1.50
2	J	203	10X	CAP-CAG	-3.11	1.39	1.50
2	B	301	10X	CAO-CAF	-3.11	1.39	1.50
2	B	301	10X	CAI-CAE	-2.48	1.39	1.50
2	J	203	10X	CAH-CAD	-2.46	1.39	1.51
2	A	201[A]	10X	CAI-CAE	-2.44	1.39	1.50
2	A	201[A]	10X	CAH-CAD	-2.44	1.39	1.51
2	J	203	10X	CAI-CAE	-2.41	1.39	1.50
2	B	301	10X	CAH-CAD	-2.34	1.39	1.51
3	A	202[B]	10Y	C12-C13	2.36	1.50	1.46
3	G	203	10Y	C12-C13	2.44	1.50	1.46

All (10) bond angle outliers are listed below:

Mol	Chain	Res	Type	Atoms	Z	Observed(°)	Ideal(°)
3	A	202[B]	10Y	C11-C10-C9	-2.31	118.70	126.58
3	A	202[B]	10Y	C13-C14-C15	-2.29	106.88	113.29
3	G	203	10Y	C11-C10-C9	-2.24	118.93	126.58
2	A	201[A]	10X	CAP-CAG-CAE	-2.10	119.40	126.58
3	G	203	10Y	C14-C15-C16	-2.10	119.42	126.58
3	A	202[B]	10Y	O3-C12-C13	-2.09	58.52	59.66
3	A	202[B]	10Y	C14-C15-C16	-2.08	119.48	126.58
3	G	203	10Y	O3-C12-C13	-2.04	58.55	59.66
3	A	202[B]	10Y	C12-O3-C13	2.81	62.57	60.69
3	G	203	10Y	C12-O3-C13	2.87	62.61	60.69

There are no chirality outliers.

There are no torsion outliers.

There are no ring outliers.

14 monomers are involved in 34 short contacts:

Mol	Chain	Res	Type	Clashes	Symm-Clashes
2	A	201[A]	10X	3	0
3	A	202[B]	10Y	4	0
4	A	204	PO4	2	0
2	B	301	10X	3	0
4	B	303	PO4	3	0
5	C	202	HEZ	1	0
5	D	201	HEZ	1	0
5	E	201	HEZ	1	0
5	F	301	HEZ	2	0
4	F	303	PO4	3	0
5	F	305	HEZ	1	0
3	G	203	10Y	2	0
5	H	203	HEZ	1	0
2	J	203	10X	7	0

5.7 Other polymers [i](#)

There are no such residues in this entry.

5.8 Polymer linkage issues [i](#)

There are no chain breaks in this entry.

6 Fit of model and data

6.1 Protein, DNA and RNA chains

In the following table, the column labelled ‘#RSRZ> 2’ contains the number (and percentage) of RSRZ outliers, followed by percent RSRZ outliers for the chain as percentile scores relative to all X-ray entries and entries of similar resolution. The OWAB column contains the minimum, median, 95th percentile and maximum values of the occupancy-weighted average B-factor per residue. The column labelled ‘Q< 0.9’ lists the number of (and percentage) of residues with an average occupancy less than 0.9.

Mol	Chain	Analysed	<RSRZ>	#RSRZ>2	OWAB(Å ²)	Q<0.9
1	A	180/195 (92%)	0.27	8 (4%) 38 38	12, 24, 40, 63	1 (0%)
1	B	180/195 (92%)	0.32	12 (6%) 21 21	13, 20, 53, 79	1 (0%)
1	C	180/195 (92%)	0.63	20 (11%) 7 7	13, 26, 50, 87	0
1	D	180/195 (92%)	0.02	3 (1%) 73 73	11, 17, 27, 56	2 (1%)
1	E	180/195 (92%)	0.02	4 (2%) 65 67	14, 20, 31, 60	1 (0%)
1	F	180/195 (92%)	0.47	16 (8%) 12 12	14, 26, 59, 74	1 (0%)
1	G	180/195 (92%)	0.34	14 (7%) 16 16	18, 25, 50, 86	1 (0%)
1	H	180/195 (92%)	0.47	17 (9%) 11 11	19, 27, 53, 66	2 (1%)
1	I	180/195 (92%)	0.14	7 (3%) 43 44	18, 27, 45, 64	1 (0%)
1	J	180/195 (92%)	0.48	15 (8%) 14 13	17, 28, 57, 85	1 (0%)
1	K	180/195 (92%)	0.05	4 (2%) 65 67	17, 24, 38, 56	2 (1%)
1	L	180/195 (92%)	0.78	31 (17%) 2 2	19, 32, 61, 77	0
All	All	2160/2340 (92%)	0.33	151 (6%) 19 19	11, 24, 49, 87	13 (0%)

All (151) RSRZ outliers are listed below:

Mol	Chain	Res	Type	RSRZ
1	J	39	GLY	10.0
1	C	38	PRO	9.6
1	F	38	PRO	9.3
1	C	40	THR	9.3
1	G	40	THR	8.2
1	H	40	THR	8.2
1	J	40	THR	8.2
1	B	39	GLY	8.1
1	F	39	GLY	8.1
1	B	38	PRO	7.8
1	L	38	PRO	7.5

Continued on next page...

Continued from previous page...

Mol	Chain	Res	Type	RSRZ
1	F	40	THR	7.5
1	B	40	THR	7.2
1	G	38	PRO	7.1
1	C	10	HIS	6.9
1	L	41	ASP	6.9
1	G	41	ASP	6.8
1	H	38	PRO	6.6
1	G	39	GLY	6.2
1	A	81	GLN	6.2
1	I	81	GLN	5.9
1	C	42	ALA	5.8
1	H	42	ALA	5.8
1	B	81	GLN	5.8
1	C	81	GLN	5.6
1	J	81	GLN	5.5
1	L	40	THR	5.4
1	L	39	GLY	5.3
1	F	41	ASP	5.3
1	J	38	PRO	5.2
1	B	37	GLN	5.2
1	C	41	ASP	5.1
1	C	39	GLY	5.1
1	A	10	HIS	5.0
1	F	42	ALA	5.0
1	H	41	ASP	5.0
1	C	37	GLN	4.8
1	J	41	ASP	4.8
1	J	10	HIS	4.8
1	L	81	GLN	4.8
1	B	41	ASP	4.7
1	L	10	HIS	4.7
1	G	42	ALA	4.6
1	E	81	GLN	4.5
1	G	81	GLN	4.5
1	F	81	GLN	4.5
1	H	10	HIS	4.5
1	J	36	LYS	4.4
1	F	37	GLN	4.4
1	G	10	HIS	4.4
1	I	10	HIS	4.3
1	H	81	GLN	4.3
1	E	10	HIS	4.3

Continued on next page...

Continued from previous page...

Mol	Chain	Res	Type	RSRZ
1	L	83	ASN	4.2
1	K	81	GLN	4.2
1	D	81	GLN	4.0
1	J	80	ASP	4.0
1	A	11	VAL	3.9
1	J	42	ALA	3.8
1	L	167	PRO	3.8
1	F	36	LYS	3.8
1	L	179	LEU	3.8
1	B	36	LYS	3.7
1	F	10	HIS	3.7
1	J	37	GLN	3.7
1	L	42	ALA	3.6
1	H	179	LEU	3.6
1	L	177	GLN	3.6
1	L	37	GLN	3.6
1	L	156	GLU	3.6
1	J	83	ASN	3.6
1	L	36	LYS	3.6
1	L	138	PHE	3.5
1	L	137	ILE	3.5
1	H	36	LYS	3.5
1	B	80	ASP	3.5
1	L	174	GLU	3.4
1	H	37	GLN	3.4
1	H	80	ASP	3.4
1	L	181	ASN	3.4
1	H	82	LYS	3.3
1	F	137	ILE	3.3
1	I	80	ASP	3.3
1	C	137	ILE	3.3
1	L	180	PRO	3.2
1	C	36	LYS	3.2
1	G	36	LYS	3.2
1	D	10	HIS	3.2
1	H	39	GLY	3.2
1	L	140	PHE	3.1
1	G	82	LYS	3.0
1	E	83	ASN	2.9
1	A	180	PRO	2.9
1	C	138	PHE	2.9
1	L	173	ASP	2.9

Continued on next page...

Continued from previous page...

Mol	Chain	Res	Type	RSRZ
1	C	11	VAL	2.9
1	F	83	ASN	2.9
1	L	168	SER	2.8
1	B	83	ASN	2.8
1	L	82	LYS	2.8
1	H	173	ASP	2.8
1	J	82	LYS	2.8
1	K	10	HIS	2.8
1	E	80	ASP	2.8
1	B	82	LYS	2.7
1	B	42	ALA	2.7
1	G	37	GLN	2.7
1	H	137	ILE	2.7
1	F	180	PRO	2.7
1	L	136	ILE	2.7
1	G	137	ILE	2.6
1	H	177	GLN	2.6
1	H	83	ASN	2.6
1	L	182	HIS	2.6
1	C	156	GLU	2.6
1	A	152	LYS	2.6
1	C	168	SER	2.6
1	H	167	PRO	2.5
1	L	22	ARG	2.5
1	K	80	ASP	2.5
1	F	80	ASP	2.5
1	J	34	GLY	2.4
1	A	156	GLU	2.4
1	L	161	PRO	2.4
1	K	66	LEU	2.3
1	I	16	VAL	2.3
1	C	164	PRO	2.3
1	I	19[A]	ILE	2.3
1	L	160	ALA	2.3
1	J	173	ASP	2.3
1	I	83	ASN	2.2
1	C	82	LYS	2.2
1	I	82	LYS	2.2
1	L	84	GLY	2.2
1	F	167	PRO	2.2
1	C	16	VAL	2.2
1	C	57	ILE	2.2

Continued on next page...

Continued from previous page...

Mol	Chain	Res	Type	RSRZ
1	L	166	SER	2.2
1	C	140	PHE	2.1
1	F	140	PHE	2.1
1	D	83	ASN	2.1
1	L	80	ASP	2.1
1	C	161	PRO	2.1
1	A	82	LYS	2.1
1	J	43	HIS	2.1
1	A	101	ILE	2.1
1	F	101	ILE	2.1
1	G	117	ILE	2.1
1	G	83	ASN	2.1
1	G	80	ASP	2.0
1	B	10	HIS	2.0

6.2 Non-standard residues in protein, DNA, RNA chains [i](#)

There are no non-standard protein/DNA/RNA residues in this entry.

6.3 Carbohydrates [i](#)

There are no carbohydrates in this entry.

6.4 Ligands [i](#)

In the following table, the Atoms column lists the number of modelled atoms in the group and the number defined in the chemical component dictionary. LLDF column lists the quality of electron density of the group with respect to its neighbouring residues in protein, DNA or RNA chains. The B-factors column lists the minimum, median, 95th percentile and maximum values of B factors of atoms in the group. The column labelled 'Q< 0.9' lists the number of atoms with occupancy less than 0.9.

Mol	Type	Chain	Res	Atoms	RSCC	RSR	LLDF	B-factors(Å ²)	Q<0.9
3	10Y	G	203	21/21	0.36	0.76	39.97	28,41,69,78	21
4	PO4	D	203	5/5	0.81	0.17	11.50	15,18,26,27	5
2	10X	A	201[A]	21/21	0.69	0.24	11.33	23,32,45,57	21
2	10X	B	301	21/21	0.65	0.24	11.15	24,33,49,60	21
3	10Y	A	202[B]	21/21	0.69	0.23	10.50	27,33,49,67	21
5	HEZ	C	202	8/8	0.79	0.15	6.59	33,37,52,54	0
5	HEZ	D	201	8/8	0.94	0.15	6.00	18,26,30,31	0

Continued on next page...

Continued from previous page...

Mol	Type	Chain	Res	Atoms	RSCC	RSR	LLDF	B-factors(Å ²)	Q<0.9
4	PO4	J	201	5/5	0.96	0.13	5.97	25,26,27,29	0
2	10X	J	203	21/21	0.62	0.26	5.95	27,37,48,50	21
4	PO4	E	203	5/5	0.82	0.18	5.37	21,23,33,34	5
5	HEZ	F	305	8/8	0.67	0.23	5.10	35,41,49,50	8
5	HEZ	E	201	8/8	0.92	0.15	4.93	20,31,35,35	0
5	HEZ	K	201	8/8	0.91	0.14	4.35	27,36,39,41	0
4	PO4	K	203	5/5	0.89	0.17	4.34	35,49,53,54	0
4	PO4	J	202	5/5	0.81	0.16	3.97	34,38,44,45	5
5	HEZ	I	201	8/8	0.94	0.16	3.95	32,38,38,41	0
4	PO4	G	201	5/5	0.98	0.10	3.89	23,24,26,26	0
4	PO4	L	202	5/5	0.90	0.23	3.84	47,53,64,65	0
5	HEZ	F	301	8/8	0.78	0.15	3.56	40,46,54,55	0
4	PO4	F	303	5/5	0.86	0.17	3.48	29,37,40,42	5
4	PO4	A	204	5/5	0.91	0.21	3.34	34,48,55,55	0
5	HEZ	H	203	8/8	0.82	0.15	3.11	42,48,52,58	0
4	PO4	G	202	5/5	0.89	0.12	2.90	25,29,36,37	5
4	PO4	A	203	5/5	0.97	0.10	2.66	23,25,26,29	0
4	PO4	H	202	5/5	0.87	0.17	2.56	33,45,54,61	5
5	HEZ	B	304	8/8	0.91	0.10	2.55	34,38,40,43	0
4	PO4	I	203	5/5	0.94	0.12	2.49	42,50,63,64	0
4	PO4	C	201	5/5	0.97	0.11	1.76	26,26,29,31	0
4	PO4	B	303	5/5	0.83	0.15	1.65	19,30,33,39	5
5	HEZ	F	304	8/8	0.81	0.13	1.42	42,45,52,56	0
4	PO4	B	302	5/5	0.97	0.09	1.41	22,22,22,24	0
4	PO4	F	302	5/5	0.98	0.09	1.30	23,23,25,27	0
4	PO4	L	201	5/5	0.96	0.09	1.15	28,29,30,30	0
4	PO4	I	202	5/5	0.98	0.09	0.65	25,26,28,29	0
4	PO4	E	202	5/5	0.98	0.07	0.00	21,22,24,25	0
4	PO4	H	201	5/5	0.97	0.06	-0.08	27,28,29,29	5
4	PO4	D	202	5/5	0.99	0.06	-1.56	18,19,21,21	0
4	PO4	K	202	5/5	0.99	0.05	-1.87	27,28,28,29	0

6.5 Other polymers ⓘ

There are no such residues in this entry.