



Full wwPDB X-ray Structure Validation Report ⓘ

Jan 31, 2016 – 07:47 PM GMT

PDB ID : 1H7R
Title : SCHIFF-BASE COMPLEX OF YEAST 5-AMINOLAEVULINIC ACID DEHYDRATASE WITH SUCCINYLLACETONE AT 2.0 Å RESOLUTION.
Authors : Erskine, P.T.; Newbold, R.; Brindley, A.A.; Wood, S.P.; Shoolingin-Jordan, P.M.; Warren, M.J.; Cooper, J.B.
Deposited on : 2001-07-09
Resolution : 2.00 Å(reported)

This is a Full wwPDB X-ray Structure Validation Report for a publicly released PDB entry.
We welcome your comments at validation@mail.wwpdb.org
A user guide is available at
<http://wwpdb.org/validation/2016/XrayValidationReportHelp>
with specific help available everywhere you see the ⓘ symbol.

The following versions of software and data (see [references ⓘ](#)) were used in the production of this report:

MolProbity : 4.02b-467
Mogul : 1.7 (RC4), CSD as536be (2015)
Xtriage (Phenix) : 1.9-1692
EDS : rb-20026688
Percentile statistics : 20151230.v01 (using entries in the PDB archive December 30th 2015)
Refmac : 5.8.0135
CCP4 : 6.5.0
Ideal geometry (proteins) : Engh & Huber (2001)
Ideal geometry (DNA, RNA) : Parkinson et al. (1996)
Validation Pipeline (wwPDB-VP) : trunk26865

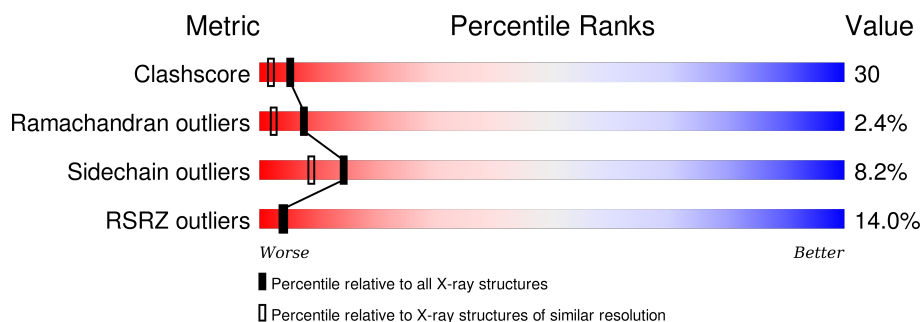
1 Overall quality at a glance

The following experimental techniques were used to determine the structure:

X-RAY DIFFRACTION

The reported resolution of this entry is 2.00 Å.

Percentile scores (ranging between 0-100) for global validation metrics of the entry are shown in the following graphic. The table shows the number of entries on which the scores are based.



Metric	Whole archive (#Entries)	Similar resolution (#Entries, resolution range(Å))
Clashscore	102246	7340 (2.00-2.00)
Ramachandran outliers	100387	7248 (2.00-2.00)
Sidechain outliers	100360	7247 (2.00-2.00)
RSRZ outliers	91569	6262 (2.00-2.00)

The table below summarises the geometric issues observed across the polymeric chains and their fit to the electron density. The red, orange, yellow and green segments on the lower bar indicate the fraction of residues that contain outliers for ≥ 3 , 2, 1 and 0 types of geometric quality criteria. A grey segment represents the fraction of residues that are not modelled. The numeric value for each fraction is indicated below the corresponding segment, with a dot representing fractions $\leq 5\%$. The upper red bar (where present) indicates the fraction of residues that have poor fit to the electron density. The numeric value is given above the bar.

Mol	Chain	Length	Quality of chain
1	A	342	<div> <div>14%</div> <div>61%</div> <div>33%</div> <div>6%</div> </div>

The following table lists non-polymeric compounds, carbohydrate monomers and non-standard residues in protein, DNA, RNA chains that are outliers for geometric or electron-density-fit criteria:

Mol	Type	Chain	Res	Chirality	Geometry	Clashes	Electron density
2	SHU	A	1343	-	-	X	-

2 Entry composition [i](#)

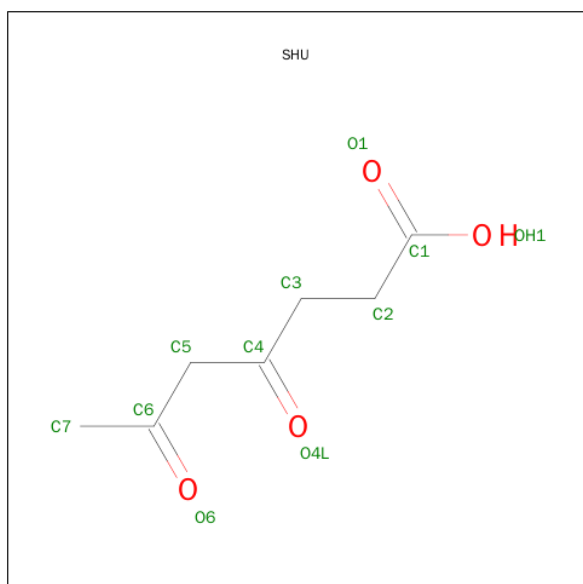
There are 4 unique types of molecules in this entry. The entry contains 2952 atoms, of which 0 are hydrogens and 0 are deuteriums.

In the tables below, the ZeroOcc column contains the number of atoms modelled with zero occupancy, the AltConf column contains the number of residues with at least one atom in alternate conformation and the Trace column contains the number of residues modelled with at most 2 atoms.

- Molecule 1 is a protein called 5-AMINOLAEVULINIC ACID DEHYDRATASE.

Mol	Chain	Residues	Atoms					ZeroOcc	AltConf	Trace
			Total	C	N	O	S			
1	A	342	2659	1689	459	496	15	0	1	0

- Molecule 2 is 4,6-DIOXOHEPTANOIC ACID (three-letter code: SHU) (formula: C₇H₁₀O₄).



Mol	Chain	Residues	Atoms			ZeroOcc	AltConf
			Total	C	O		
2	A	1	10	7	3	0	0

- Molecule 3 is ZINC ION (three-letter code: ZN) (formula: Zn).

Mol	Chain	Residues	Atoms		ZeroOcc	AltConf
			Total	Zn		
3	A	1	1	1	0	0

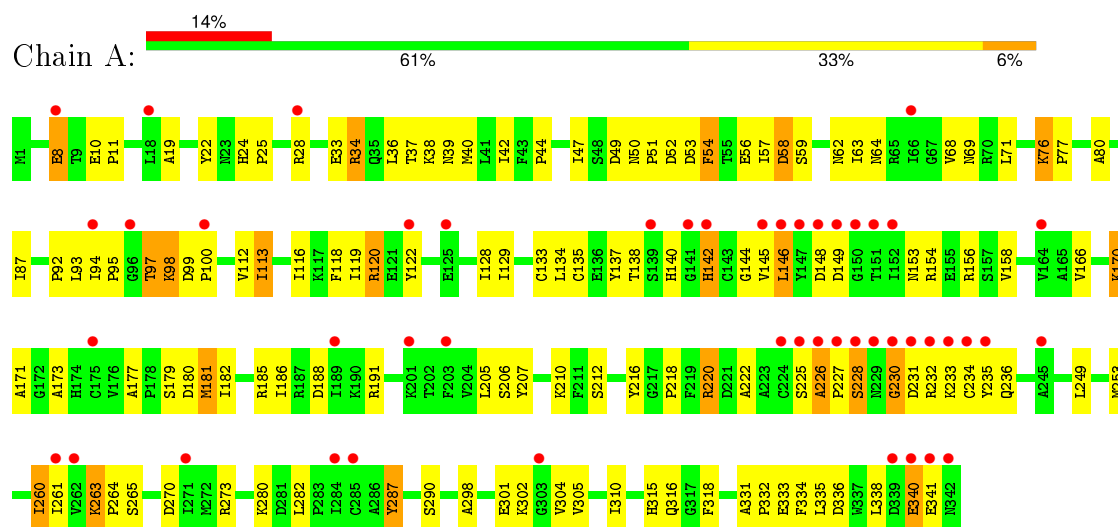
- Molecule 4 is water.

Mol	Chain	Residues	Atoms		ZeroOcc	AltConf
4	A	282	Total 282	O 282	0	1

3 Residue-property plots

These plots are drawn for all protein, RNA and DNA chains in the entry. The first graphic for a chain summarises the proportions of errors displayed in the second graphic. The second graphic shows the sequence view annotated by issues in geometry and electron density. Residues are color-coded according to the number of geometric quality criteria for which they contain at least one outlier: green = 0, yellow = 1, orange = 2 and red = 3 or more. A red dot above a residue indicates a poor fit to the electron density ($RSRZ > 2$). Stretches of 2 or more consecutive residues without any outlier are shown as a green connector. Residues present in the sample, but not in the model, are shown in grey.

• Molecule 1: 5-AMINOLAEVULINIC ACID DEHYDRATASE



4 Data and refinement statistics

Property	Value	Source
Space group	I 4 2 2	Depositor
Cell constants a, b, c, α , β , γ	103.10 Å 103.10 Å 168.00 Å 90.00° 90.00° 90.00°	Depositor
Resolution (Å)	16.80 – 2.00 16.80 – 2.00	Depositor EDS
% Data completeness (in resolution range)	99.6 (16.80-2.00) 99.7 (16.80-2.00)	Depositor EDS
R_{merge}	0.11	Depositor
R_{sym}	(Not available)	Depositor
$\langle I/\sigma(I) \rangle$ ¹	5.05 (at 2.00 Å)	Xtriage
Refinement program	RESTRAIN	Depositor
R, R_{free}	0.239 , 0.310 0.288 , (Not available)	Depositor DCC
R_{free} test set	No test flags present.	DCC
Wilson B-factor (Å ²)	27.9	Xtriage
Anisotropy	0.596	Xtriage
Bulk solvent k_{sol} (e/Å ³), B_{sol} (Å ²)	0.43 , 44.2	EDS
Estimated twinning fraction	No twinning to report.	Xtriage
L-test for twinning ²	$\langle L \rangle = 0.49$, $\langle L^2 \rangle = 0.33$	Xtriage
Outliers	0 of 30754 reflections	Xtriage
F_o, F_c correlation	0.91	EDS
Total number of atoms	2952	wwPDB-VP
Average B, all atoms (Å ²)	0.0	wwPDB-VP

Xtriage's analysis on translational NCS is as follows: *The largest off-origin peak in the Patterson function is 3.88% of the height of the origin peak. No significant pseudotranslation is detected.*

¹Intensities estimated from amplitudes.

²Theoretical values of $\langle |L| \rangle$, $\langle L^2 \rangle$ for acentric reflections are 0.5, 0.375 respectively for untwinned datasets, and 0.333, 0.2 for perfectly twinned datasets.

5 Model quality [i](#)

5.1 Standard geometry [i](#)

Bond lengths and bond angles in the following residue types are not validated in this section: ZN, SHU

The Z score for a bond length (or angle) is the number of standard deviations the observed value is removed from the expected value. A bond length (or angle) with $|Z| > 5$ is considered an outlier worth inspection. RMSZ is the root-mean-square of all Z scores of the bond lengths (or angles).

Mol	Chain	Bond lengths		Bond angles	
		RMSZ	$\# Z > 5$	RMSZ	$\# Z > 5$
1	A	0.38	0/2724	0.72	2/3694 (0.1%)

Chiral center outliers are detected by calculating the chiral volume of a chiral center and verifying if the center is modelled as a planar moiety or with the opposite hand. A planarity outlier is detected by checking planarity of atoms in a peptide group, atoms in a mainchain group or atoms of a sidechain that are expected to be planar.

Mol	Chain	#Chirality outliers	#Planarity outliers
1	A	1	0

There are no bond length outliers.

All (2) bond angle outliers are listed below:

Mol	Chain	Res	Type	Atoms	Z	Observed($^{\circ}$)	Ideal($^{\circ}$)
1	A	8[A]	GLU	CB-CG-CD	-7.09	95.04	114.20
1	A	8[B]	GLU	CB-CG-CD	-7.09	95.04	114.20

All (1) chirality outliers are listed below:

Mol	Chain	Res	Type	Atom
1	A	228	SER	CA

There are no planarity outliers.

5.2 Too-close contacts [i](#)

In the following table, the Non-H and H(model) columns list the number of non-hydrogen atoms and hydrogen atoms in the chain respectively. The H(added) column lists the number of hydrogen

atoms added and optimized by MolProbity. The Clashes column lists the number of clashes within the asymmetric unit, whereas Symm-Clashes lists symmetry related clashes.

Mol	Chain	Non-H	H(model)	H(added)	Clashes	Symm-Clashes
1	A	2659	0	2633	161	0
2	A	10	0	9	6	0
3	A	1	0	0	0	0
4	A	282	0	0	8	2
All	All	2952	0	2642	161	2

The all-atom clashscore is defined as the number of clashes found per 1000 atoms (including hydrogen atoms). The all-atom clashscore for this structure is 30.

All (161) close contacts within the same asymmetric unit are listed below, sorted by their clash magnitude.

Atom-1	Atom-2	Interatomic distance (Å)	Clash overlap (Å)
1:A:99:ASP:HB2	1:A:100:PRO:HD2	1.17	1.15
1:A:99:ASP:CB	1:A:100:PRO:HD2	1.81	1.07
1:A:253:MET:HG3	1:A:282:LEU:HD11	1.42	1.01
1:A:10:GLU:HB3	1:A:11:PRO:HD2	1.46	0.95
1:A:8[B]:GLU:HB2	4:A:2025:HOH:O	1.65	0.95
1:A:212:SER:HB3	1:A:236:GLN:HB3	1.47	0.94
1:A:99:ASP:HB2	1:A:100:PRO:CD	1.99	0.93
1:A:263:LYS:NZ	2:A:1343:SHU:HC3	1.84	0.91
1:A:38:LYS:HG3	1:A:338:LEU:HD12	1.56	0.88
1:A:8[A]:GLU:HB2	4:A:2025:HOH:O	1.72	0.88
1:A:140:HIS:CE1	1:A:146:LEU:HD21	2.10	0.86
1:A:51:PRO:HB2	1:A:69:ASN:ND2	1.91	0.85
1:A:230:GLY:HA2	1:A:233:LYS:HE2	1.59	0.84
1:A:71:LEU:HB3	1:A:118:PHE:CE2	2.13	0.84
1:A:179:SER:HB2	2:A:1343:SHU:HC1	1.60	0.81
1:A:205:LEU:HD11	1:A:261:ILE:HG13	1.62	0.80
1:A:34:ARG:HH11	1:A:34:ARG:HG2	1.47	0.80
1:A:210:LYS:HE3	2:A:1343:SHU:HC2	1.65	0.79
1:A:220:ARG:HD2	1:A:227:PRO:HD2	1.65	0.78
1:A:99:ASP:CB	1:A:100:PRO:CD	2.57	0.77
1:A:263:LYS:NZ	2:A:1343:SHU:C7	2.49	0.76
1:A:58:ASP:O	1:A:59:SER:HB2	1.86	0.76
1:A:249:LEU:CD2	1:A:260:ILE:HD13	2.15	0.76
1:A:142:HIS:CE1	1:A:232:ARG:HD2	2.20	0.75
1:A:230:GLY:HA2	1:A:233:LYS:CE	2.17	0.75
1:A:180:ASP:O	1:A:181:MET:HB2	1.88	0.73
1:A:134:LEU:O	1:A:138:THR:HG23	1.90	0.72

Continued on next page...

Continued from previous page...

Atom-1	Atom-2	Interatomic distance (Å)	Clash overlap (Å)
1:A:302:LYS:HG3	1:A:302:LYS:O	1.90	0.71
1:A:76:LYS:HB3	1:A:77:PRO:HD3	1.71	0.71
1:A:34:ARG:NH1	1:A:34:ARG:HG2	2.06	0.70
1:A:210:LYS:HE3	2:A:1343:SHU:C7	2.22	0.69
1:A:38:LYS:HG3	1:A:338:LEU:CD1	2.22	0.69
1:A:212:SER:CB	1:A:236:GLN:HE21	2.06	0.69
1:A:263:LYS:HA	1:A:264:PRO:C	2.14	0.68
1:A:253:MET:HG3	1:A:282:LEU:CD1	2.21	0.67
1:A:212:SER:HB2	1:A:236:GLN:HE21	1.60	0.67
1:A:230:GLY:HA2	1:A:233:LYS:NZ	2.10	0.66
1:A:135:CYS:HA	1:A:142:HIS:O	1.95	0.65
1:A:233:LYS:N	1:A:233:LYS:HD2	2.10	0.65
1:A:145:VAL:HG11	1:A:156:ARG:HG2	1.78	0.65
1:A:230:GLY:HA2	1:A:233:LYS:HZ1	1.61	0.65
1:A:24:HIS:CD2	1:A:25:PRO:HD2	2.32	0.64
1:A:71:LEU:HB3	1:A:118:PHE:HE2	1.60	0.64
1:A:220:ARG:CD	1:A:227:PRO:HD2	2.26	0.64
1:A:10:GLU:HB3	1:A:11:PRO:CD	2.25	0.63
1:A:99:ASP:O	1:A:138:THR:HA	1.98	0.63
1:A:142:HIS:HE1	1:A:232:ARG:HD2	1.62	0.62
1:A:57:ILE:HG12	1:A:222:ALA:HB2	1.82	0.61
1:A:92:PRO:HB2	1:A:97:THR:HG21	1.81	0.61
1:A:38:LYS:CG	1:A:338:LEU:HD12	2.29	0.61
1:A:181:MET:HB3	1:A:235:TYR:CB	2.30	0.61
1:A:57:ILE:HD13	1:A:63:ILE:HG22	1.82	0.60
1:A:226:ALA:O	1:A:227:PRO:C	2.36	0.60
1:A:225:SER:O	1:A:227:PRO:HD3	2.02	0.60
1:A:24:HIS:CG	1:A:25:PRO:HD2	2.36	0.60
1:A:154:ARG:NH2	4:A:2180:HOH:O	2.18	0.60
1:A:68:VAL:HG23	4:A:2091:HOH:O	2.02	0.59
1:A:47:ILE:HD12	1:A:71:LEU:HD11	1.85	0.59
1:A:263:LYS:HB2	1:A:287:TYR:HB3	1.84	0.59
1:A:216:TYR:CE1	1:A:263:LYS:HE2	2.37	0.59
1:A:140:HIS:CD2	1:A:146:LEU:HD11	2.37	0.59
1:A:186:ILE:CD1	1:A:206:SER:HB2	2.33	0.59
1:A:158:VAL:HG11	1:A:188:ASP:OD1	2.03	0.58
1:A:186:ILE:HD11	1:A:206:SER:HB2	1.86	0.58
1:A:113:ILE:HG13	4:A:2158:HOH:O	2.02	0.58
1:A:134:LEU:HD12	1:A:144:GLY:HA2	1.85	0.58
1:A:304:VAL:HG12	1:A:305:VAL:HG13	1.86	0.58
1:A:56:GLU:H	1:A:56:GLU:CD	2.07	0.57

Continued on next page...

Continued from previous page...

Atom-1	Atom-2	Interatomic distance (Å)	Clash overlap (Å)
1:A:212:SER:HB2	1:A:233:LYS:CG	2.34	0.57
1:A:220:ARG:NE	1:A:227:PRO:HD2	2.19	0.57
1:A:181:MET:HB3	1:A:235:TYR:HB3	1.85	0.56
1:A:218:PRO:HD2	1:A:290:SER:OG	2.06	0.56
1:A:270:ASP:N	1:A:270:ASP:OD2	2.37	0.56
1:A:232:ARG:C	1:A:233:LYS:HD2	2.27	0.56
1:A:94:ILE:O	1:A:97:THR:HB	2.05	0.56
1:A:140:HIS:CG	1:A:146:LEU:HD11	2.41	0.55
1:A:99:ASP:CG	1:A:100:PRO:HD2	2.26	0.55
1:A:116:ILE:HD13	1:A:173:ALA:HB2	1.87	0.55
1:A:220:ARG:HD2	1:A:227:PRO:CD	2.34	0.55
1:A:57:ILE:HD12	1:A:63:ILE:O	2.06	0.55
1:A:56:GLU:HA	1:A:64:ASN:OD1	2.06	0.55
1:A:302:LYS:HG2	1:A:304:VAL:HG23	1.90	0.54
1:A:119:ILE:HG22	1:A:128:ILE:HD11	1.90	0.54
1:A:99:ASP:OD2	1:A:99:ASP:C	2.47	0.53
1:A:177:ALA:HB1	1:A:207:TYR:CE1	2.43	0.53
1:A:180:ASP:O	1:A:181:MET:CB	2.56	0.53
1:A:302:LYS:CG	1:A:302:LYS:O	2.57	0.52
1:A:57:ILE:CG1	1:A:222:ALA:HB2	2.40	0.51
1:A:334:PHE:O	1:A:338:LEU:HG	2.10	0.51
1:A:54:PHE:CD2	1:A:54:PHE:C	2.83	0.51
1:A:212:SER:CB	1:A:236:GLN:HB3	2.33	0.51
1:A:177:ALA:HB1	1:A:207:TYR:HE1	1.74	0.51
1:A:153:ASN:C	1:A:153:ASN:OD1	2.49	0.51
1:A:212:SER:HB2	1:A:233:LYS:HG3	1.94	0.50
1:A:158:VAL:HG23	1:A:182:ILE:HG21	1.94	0.50
1:A:38:LYS:HG2	1:A:335:LEU:HD23	1.94	0.50
1:A:97:THR:HG22	1:A:98:LYS:N	2.27	0.50
1:A:42:ILE:O	1:A:44:PRO:HD3	2.12	0.50
1:A:212:SER:HA	1:A:236:GLN:NE2	2.27	0.49
1:A:263:LYS:HA	1:A:264:PRO:O	2.11	0.49
1:A:113:ILE:HG23	1:A:171:ALA:HB1	1.94	0.49
1:A:212:SER:HB2	1:A:233:LYS:HG2	1.94	0.49
1:A:181:MET:CB	1:A:235:TYR:HB2	2.43	0.49
1:A:216:TYR:HE1	1:A:263:LYS:HE2	1.77	0.49
1:A:233:LYS:HE3	4:A:2216:HOH:O	2.13	0.49
1:A:340:GLU:O	1:A:341:GLU:HG3	2.13	0.48
1:A:166:VAL:HG12	1:A:170:LYS:HD2	1.95	0.48
1:A:51:PRO:O	1:A:69:ASN:HB2	2.14	0.48
1:A:49:ASP:CG	1:A:93:LEU:H	2.18	0.48

Continued on next page...

Continued from previous page...

Atom-1	Atom-2	Interatomic distance (Å)	Clash overlap (Å)
1:A:94:ILE:HA	1:A:95:PRO:HD3	1.75	0.47
1:A:33:GLU:OE2	4:A:2070:HOH:O	2.20	0.47
1:A:87:ILE:HG13	1:A:129:ILE:HG22	1.96	0.47
1:A:316:GLN:HG2	4:A:2073:HOH:O	2.15	0.47
1:A:140:HIS:NE2	1:A:146:LEU:HD21	2.26	0.47
1:A:120:ARG:HA	1:A:120:ARG:HD2	1.52	0.47
1:A:249:LEU:HD21	1:A:260:ILE:HD13	1.94	0.47
1:A:57:ILE:HG12	1:A:222:ALA:CB	2.43	0.46
1:A:113:ILE:HG23	1:A:171:ALA:CB	2.45	0.46
1:A:120:ARG:HG3	1:A:120:ARG:NH1	2.30	0.46
1:A:140:HIS:NE2	1:A:146:LEU:HG	2.30	0.46
1:A:87:ILE:O	1:A:87:ILE:HG23	2.16	0.46
1:A:58:ASP:O	1:A:59:SER:CB	2.57	0.46
1:A:54:PHE:C	1:A:54:PHE:HD2	2.20	0.46
1:A:54:PHE:O	1:A:54:PHE:HD2	1.97	0.46
1:A:140:HIS:CD2	1:A:146:LEU:HG	2.51	0.46
1:A:140:HIS:CD2	1:A:146:LEU:CD1	2.99	0.45
1:A:37:THR:O	1:A:40:MET:HB2	2.17	0.45
1:A:230:GLY:CA	1:A:233:LYS:HE2	2.39	0.45
1:A:76:LYS:CB	1:A:77:PRO:HD3	2.44	0.45
1:A:36:LEU:CD2	1:A:338:LEU:HD21	2.47	0.45
1:A:233:LYS:N	1:A:233:LYS:CD	2.80	0.45
1:A:220:ARG:CZ	1:A:227:PRO:HG2	2.47	0.44
1:A:205:LEU:HG	1:A:261:ILE:CD1	2.48	0.44
1:A:57:ILE:HG21	1:A:222:ALA:HB2	2.00	0.44
1:A:333:GLU:O	1:A:336:ASP:HB2	2.18	0.44
1:A:212:SER:CA	1:A:236:GLN:HE21	2.31	0.43
1:A:77:PRO:O	1:A:80:ALA:HB3	2.18	0.43
1:A:191:ARG:HD3	1:A:191:ARG:HA	1.68	0.43
1:A:51:PRO:HB2	1:A:69:ASN:HD21	1.76	0.43
1:A:19:ALA:HA	1:A:22:TYR:CE2	2.53	0.43
1:A:181:MET:HB3	1:A:235:TYR:HB2	2.01	0.43
1:A:298:ALA:O	1:A:301:GLU:HB2	2.18	0.43
1:A:315:HIS:HA	1:A:318:PHE:CD1	2.54	0.42
1:A:118:PHE:CE1	1:A:122:TYR:CD1	3.06	0.42
1:A:62:ASN:OD1	1:A:332:PRO:HG2	2.19	0.42
1:A:212:SER:HA	1:A:236:GLN:HE21	1.83	0.42
1:A:315:HIS:CD2	1:A:334:PHE:CE1	3.08	0.42
1:A:119:ILE:CG2	1:A:128:ILE:HD11	2.49	0.42
1:A:39:ASN:C	1:A:39:ASN:OD1	2.58	0.42
1:A:263:LYS:HE3	2:A:1343:SHU:HC32	1.78	0.42

Continued on next page...

Continued from previous page...

Atom-1	Atom-2	Interatomic distance (Å)	Clash overlap (Å)
1:A:50:ASN:C	1:A:50:ASN:OD1	2.58	0.41
1:A:331:ALA:N	1:A:332:PRO:CD	2.83	0.41
1:A:180:ASP:CG	1:A:181:MET:H	2.24	0.41
1:A:265:SER:HB2	1:A:318:PHE:CE2	2.56	0.41
1:A:205:LEU:HD21	1:A:261:ILE:HD11	2.02	0.41
1:A:180:ASP:OD2	1:A:180:ASP:N	2.51	0.41
1:A:310:ILE:HA	1:A:310:ILE:HD12	1.82	0.41
1:A:92:PRO:HG3	1:A:137:TYR:CD2	2.56	0.41
1:A:50:ASN:O	1:A:52:ASP:N	2.54	0.41
1:A:112:VAL:O	1:A:116:ILE:HG13	2.21	0.41
1:A:120:ARG:HG3	1:A:120:ARG:HH11	1.84	0.41

All (2) symmetry-related close contacts are listed below. The label for Atom-2 includes the symmetry operator and encoded unit-cell translations to be applied.

Atom-1	Atom-2	Interatomic distance (Å)	Clash overlap (Å)
4:A:2032:HOH:O	4:A:2197:HOH:O[5_555]	2.06	0.14
4:A:2074:HOH:O	4:A:2074:HOH:O[5_555]	2.14	0.06

5.3 Torsion angles [i](#)

5.3.1 Protein backbone [i](#)

In the following table, the Percentiles column shows the percent Ramachandran outliers of the chain as a percentile score with respect to all X-ray entries followed by that with respect to entries of similar resolution.

The Analysed column shows the number of residues for which the backbone conformation was analysed, and the total number of residues.

Mol	Chain	Analysed	Favoured	Allowed	Outliers	Percentiles
1	A	341/342 (100%)	306 (90%)	27 (8%)	8 (2%)	8 3

All (8) Ramachandran outliers are listed below:

Mol	Chain	Res	Type
1	A	54	PHE
1	A	226	ALA
1	A	228	SER
1	A	234	CYS

Continued on next page...

Continued from previous page...

Mol	Chain	Res	Type
1	A	181	MET
1	A	340	GLU
1	A	58	ASP
1	A	230	GLY

5.3.2 Protein sidechains ⓘ

In the following table, the Percentiles column shows the percent sidechain outliers of the chain as a percentile score with respect to all X-ray entries followed by that with respect to entries of similar resolution.

The Analysed column shows the number of residues for which the sidechain conformation was analysed, and the total number of residues.

Mol	Chain	Analysed	Rotameric	Outliers	Percentiles
1	A	283/282 (100%)	260 (92%)	23 (8%)	15 9

All (23) residues with a non-rotameric sidechain are listed below:

Mol	Chain	Res	Type
1	A	28	ARG
1	A	34	ARG
1	A	53	ASP
1	A	76	LYS
1	A	97	THR
1	A	98	LYS
1	A	113	ILE
1	A	120	ARG
1	A	133	CYS
1	A	142	HIS
1	A	146	LEU
1	A	148	ASP
1	A	149	ASP
1	A	170	LYS
1	A	185	ARG
1	A	220	ARG
1	A	228	SER
1	A	231	ASP
1	A	260	ILE
1	A	263	LYS
1	A	273	ARG
1	A	280	LYS

Continued on next page...

Continued from previous page...

Mol	Chain	Res	Type
1	A	287	TYR

Some sidechains can be flipped to improve hydrogen bonding and reduce clashes. All (5) such sidechains are listed below:

Mol	Chain	Res	Type
1	A	29	GLN
1	A	69	ASN
1	A	229	ASN
1	A	236	GLN
1	A	316	GLN

5.3.3 RNA [i](#)

There are no RNA molecules in this entry.

5.4 Non-standard residues in protein, DNA, RNA chains [i](#)

There are no non-standard protein/DNA/RNA residues in this entry.

5.5 Carbohydrates [i](#)

There are no carbohydrates in this entry.

5.6 Ligand geometry [i](#)

Of 2 ligands modelled in this entry, 1 is monoatomic - leaving 1 for Mogul analysis.

In the following table, the Counts columns list the number of bonds (or angles) for which Mogul statistics could be retrieved, the number of bonds (or angles) that are observed in the model and the number of bonds (or angles) that are defined in the chemical component dictionary. The Link column lists molecule types, if any, to which the group is linked. The Z score for a bond length (or angle) is the number of standard deviations the observed value is removed from the expected value. A bond length (or angle) with $|Z| > 2$ is considered an outlier worth inspection. RMSZ is the root-mean-square of all Z scores of the bond lengths (or angles).

Mol	Type	Chain	Res	Link	Bond lengths			Bond angles		
					Counts	RMSZ	$\# Z > 2$	Counts	RMSZ	$\# Z > 2$
2	SHU	A	1343	1	6,9,10	0.73	0	7,10,12	0.96	0

In the following table, the Chirals column lists the number of chiral outliers, the number of chiral

centers analysed, the number of these observed in the model and the number defined in the chemical component dictionary. Similar counts are reported in the Torsion and Rings columns. '-' means no outliers of that kind were identified.

Mol	Type	Chain	Res	Link	Chirals	Torsions	Rings
2	SHU	A	1343	1	-	0/5/7/9	0/0/0/0

There are no bond length outliers.

There are no bond angle outliers.

There are no chirality outliers.

There are no torsion outliers.

There are no ring outliers.

1 monomer is involved in 6 short contacts:

Mol	Chain	Res	Type	Clashes	Symm-Clashes
2	A	1343	SHU	6	0

5.7 Other polymers [i](#)

There are no such residues in this entry.

5.8 Polymer linkage issues [i](#)

There are no chain breaks in this entry.

6 Fit of model and data ⓘ

6.1 Protein, DNA and RNA chains ⓘ

In the following table, the column labelled ‘#RSRZ> 2’ contains the number (and percentage) of RSRZ outliers, followed by percent RSRZ outliers for the chain as percentile scores relative to all X-ray entries and entries of similar resolution. The OWAB column contains the minimum, median, 95th percentile and maximum values of the occupancy-weighted average B-factor per residue. The column labelled ‘Q< 0.9’ lists the number of (and percentage) of residues with an average occupancy less than 0.9.

Mol	Chain	Analysed	<RSRZ>	#RSRZ>2	OWAB(Å ²)	Q<0.9
1	A	342/342 (100%)	1.20	48 (14%) 4 4	0, 0, 1, 2	0

All (48) RSRZ outliers are listed below:

Mol	Chain	Res	Type	RSRZ
1	A	228	SER	9.9
1	A	229	ASN	9.7
1	A	226	ALA	9.4
1	A	230	GLY	9.3
1	A	231	ASP	8.9
1	A	227	PRO	8.8
1	A	341	GLU	8.5
1	A	342	ASN	8.2
1	A	234	CYS	7.3
1	A	233	LYS	5.7
1	A	232	ARG	5.5
1	A	146	LEU	5.4
1	A	141	GLY	5.0
1	A	150	GLY	4.8
1	A	147	TYR	4.6
1	A	235	TYR	4.4
1	A	271	ILE	4.1
1	A	148	ASP	4.0
1	A	151	THR	3.9
1	A	149	ASP	3.9
1	A	142	HIS	3.5
1	A	152	ILE	3.3
1	A	245	ALA	3.2
1	A	225	SER	3.1
1	A	122	TYR	3.0
1	A	100	PRO	2.9
1	A	340	GLU	2.6

Continued on next page...

Continued from previous page...

Mol	Chain	Res	Type	RSRZ
1	A	262	VAL	2.6
1	A	284	ILE	2.5
1	A	139	SER	2.5
1	A	96	GLY	2.5
1	A	303	GLY	2.5
1	A	8[A]	GLU	2.4
1	A	224	CYS	2.4
1	A	125	GLU	2.3
1	A	145	VAL	2.3
1	A	189	ILE	2.3
1	A	339	ASP	2.3
1	A	18	LEU	2.2
1	A	261	ILE	2.2
1	A	285	CYS	2.2
1	A	164	VAL	2.2
1	A	28	ARG	2.1
1	A	175	CYS	2.1
1	A	201	LYS	2.1
1	A	94	ILE	2.0
1	A	66	ILE	2.0
1	A	203	PHE	2.0

6.2 Non-standard residues in protein, DNA, RNA chains [i](#)

There are no non-standard protein/DNA/RNA residues in this entry.

6.3 Carbohydrates [i](#)

There are no carbohydrates in this entry.

6.4 Ligands [i](#)

In the following table, the Atoms column lists the number of modelled atoms in the group and the number defined in the chemical component dictionary. LLDF column lists the quality of electron density of the group with respect to its neighbouring residues in protein, DNA or RNA chains. The B-factors column lists the minimum, median, 95th percentile and maximum values of B factors of atoms in the group. The column labelled 'Q< 0.9' lists the number of atoms with occupancy less than 0.9.

Mol	Type	Chain	Res	Atoms	RSCC	RSR	LLDF	B-factors(Å ²)	Q<0.9
2	SHU	A	1343	10/11	0.84	0.19	1.10	0,0,0,0	0

Continued on next page...

Continued from previous page...

Mol	Type	Chain	Res	Atoms	RSCC	RSR	LLDF	B-factors(\AA^2)	Q<0.9
3	ZN	A	1344	1/1	0.97	0.03	-3.33	0,0,0,0	0

6.5 Other polymers [i](#)

There are no such residues in this entry.