



wwPDB X-ray Structure Validation Summary Report ⓘ

Feb 19, 2016 – 06:59 PM GMT

PDB ID : 1H7W
Title : DIHYDROPYRIMIDINE DEHYDROGENASE (DPD) FROM PIG
Authors : Dobritsch, D.; Schneider, G.; Schnackerz, K.D.; Lindqvist, Y.
Deposited on : 2001-01-19
Resolution : 1.90 Å(reported)

This is a wwPDB X-ray Structure Validation Summary Report for a publicly released PDB entry.
We welcome your comments at validation@mail.wwpdb.org
A user guide is available at
<http://wwpdb.org/validation/2016/XrayValidationReportHelp>
with specific help available everywhere you see the ⓘ symbol.

The following versions of software and data (see [references ⓘ](#)) were used in the production of this report:

MolProbity : 4.02b-467
Mogul : 1.7.1 (RC1), CSD as537be (2016)
Xtriage (Phenix) : 1.9-1692
EDS : rb-20026982
Percentile statistics : 20151230.v01 (using entries in the PDB archive December 30th 2015)
Refmac : 5.8.0135
CCP4 : 6.5.0
Ideal geometry (proteins) : Engh & Huber (2001)
Ideal geometry (DNA, RNA) : Parkinson et al. (1996)
Validation Pipeline (wwPDB-VP) : rb-20026982

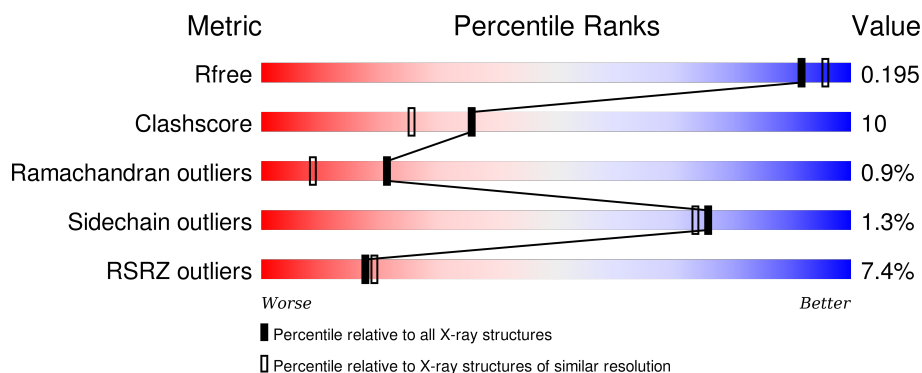
1 Overall quality at a glance

The following experimental techniques were used to determine the structure:

X-RAY DIFFRACTION

The reported resolution of this entry is 1.90 Å.

Percentile scores (ranging between 0-100) for global validation metrics of the entry are shown in the following graphic. The table shows the number of entries on which the scores are based.



Metric	Whole archive (#Entries)	Similar resolution (#Entries, resolution range(Å))
R_{free}	91344	4755 (1.90-1.90)
Clashscore	102246	5398 (1.90-1.90)
Ramachandran outliers	100387	5338 (1.90-1.90)
Sidechain outliers	100360	5339 (1.90-1.90)
RSRZ outliers	91569	4766 (1.90-1.90)

The table below summarises the geometric issues observed across the polymeric chains and their fit to the electron density. The red, orange, yellow and green segments on the lower bar indicate the fraction of residues that contain outliers for ≥ 3 , 2, 1 and 0 types of geometric quality criteria. A grey segment represents the fraction of residues that are not modelled. The numeric value for each fraction is indicated below the corresponding segment, with a dot representing fractions $\leq 5\%$. The upper red bar (where present) indicates the fraction of residues that have poor fit to the electron density. The numeric value is given above the bar.

Mol	Chain	Length	Quality of chain
1	A	1025	<div> <div>7%</div> <div>81%17%..</div> </div>
1	B	1025	<div> <div>8%</div> <div>82%16%..</div> </div>
1	C	1025	<div> <div>7%</div> <div>81%18%. </div> </div>
1	D	1025	<div> <div>8%</div> <div>82%16%..</div> </div>

2 Entry composition

There are 5 unique types of molecules in this entry. The entry contains 36125 atoms, of which 0 are hydrogens and 0 are deuteriums.

In the tables below, the ZeroOcc column contains the number of atoms modelled with zero occupancy, the AltConf column contains the number of residues with at least one atom in alternate conformation and the Trace column contains the number of residues modelled with at most 2 atoms.

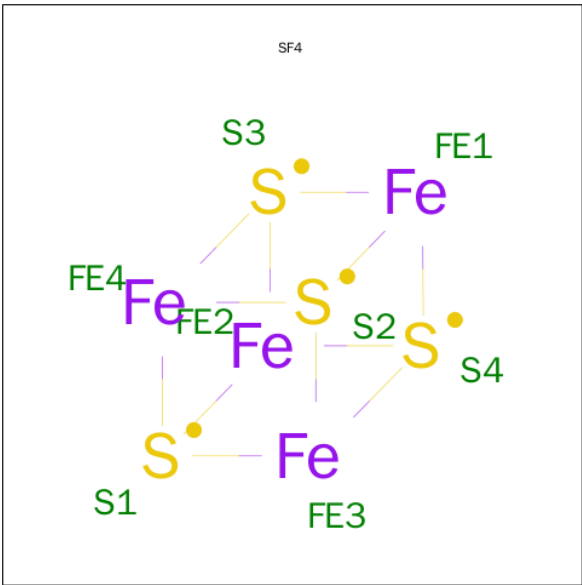
- Molecule 1 is a protein called DIHYDROPYRIMIDINE DEHYDROGENASE.

Mol	Chain	Residues	Atoms					ZeroOcc	AltConf	Trace
1	A	1016	Total	C	N	O	S	66	0	0
			7750	4913	1314	1467	56			
1	B	1017	Total	C	N	O	S	70	0	0
			7757	4918	1315	1468	56			
1	C	1016	Total	C	N	O	S	28	0	0
			7750	4913	1314	1467	56			
1	D	1018	Total	C	N	O	S	43	0	0
			7765	4924	1316	1469	56			

There are 4 discrepancies between the modelled and reference sequences:

Chain	Residue	Modelled	Actual	Comment	Reference
A	60	ASP	GLY	CONFLICT	UNP Q28943
B	60	ASP	GLY	CONFLICT	UNP Q28943
C	60	ASP	GLY	CONFLICT	UNP Q28943
D	60	ASP	GLY	CONFLICT	UNP Q28943

- Molecule 2 is IRON/SULFUR CLUSTER (three-letter code: SF4) (formula: Fe₄S₄).



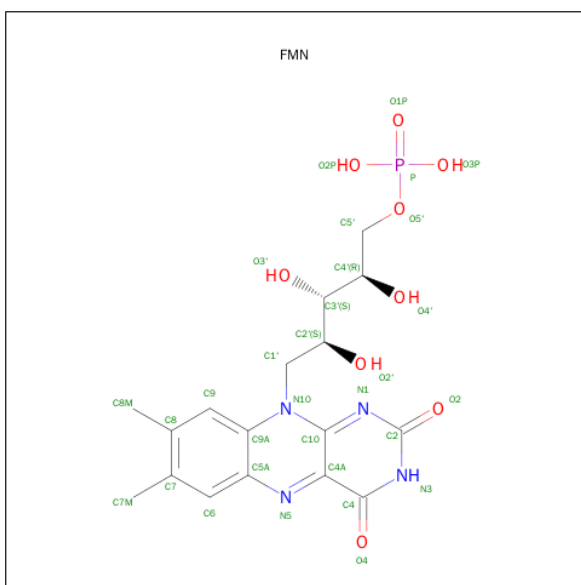
Mol	Chain	Residues	Atoms			ZeroOcc	AltConf
2	A	1	Total	Fe	S	0	0
			8	4	4		
2	A	1	Total	Fe	S	0	0
			8	4	4		
2	A	1	Total	Fe	S	0	0
			8	4	4		
2	A	1	Total	Fe	S	0	0
			8	4	4		
2	B	1	Total	Fe	S	0	0
			8	4	4		
2	B	1	Total	Fe	S	0	0
			8	4	4		
2	B	1	Total	Fe	S	0	0
			8	4	4		
2	B	1	Total	Fe	S	0	0
			8	4	4		
2	C	1	Total	Fe	S	0	0
			8	4	4		
2	C	1	Total	Fe	S	0	0
			8	4	4		
2	C	1	Total	Fe	S	0	0
			8	4	4		
2	C	1	Total	Fe	S	0	0
			8	4	4		
2	D	1	Total	Fe	S	0	0
			8	4	4		
2	D	1	Total	Fe	S	0	0
			8	4	4		

Continued on next page...

Continued from previous page...

Mol	Chain	Residues	Atoms			ZeroOcc	AltConf
2	D	1	Total 8	Fe 4	S 4	0	0
2	D	1	Total 8	Fe 4	S 4	0	0

- Molecule 3 is FLAVIN MONONUCLEOTIDE (three-letter code: FMN) (formula: $\text{C}_{17}\text{H}_{21}\text{N}_4\text{O}_9\text{P}$).



Mol	Chain	Residues	Atoms					ZeroOcc	AltConf
3	A	1	Total 31	C 17	N 4	O 9	P 1	0	0
3	B	1	Total 31	C 17	N 4	O 9	P 1	0	0
3	C	1	Total 31	C 17	N 4	O 9	P 1	0	0
3	D	1	Total 31	C 17	N 4	O 9	P 1	0	0

- Molecule 4 is FLAVIN-ADENINE DINUCLEOTIDE (three-letter code: FAD) (formula: $\text{C}_{27}\text{H}_{33}\text{N}_9\text{O}_{15}\text{P}_2$).



Mol	Chain	Residues	Atoms					ZeroOcc	AltConf
4	A	1	Total	C	N	O	P	0	0
			53	27	9	15	2		
4	B	1	Total	C	N	O	P	0	0
			53	27	9	15	2		
4	C	1	Total	C	N	O	P	0	0
			53	27	9	15	2		
4	D	1	Total	C	N	O	P	0	0
			53	27	9	15	2		

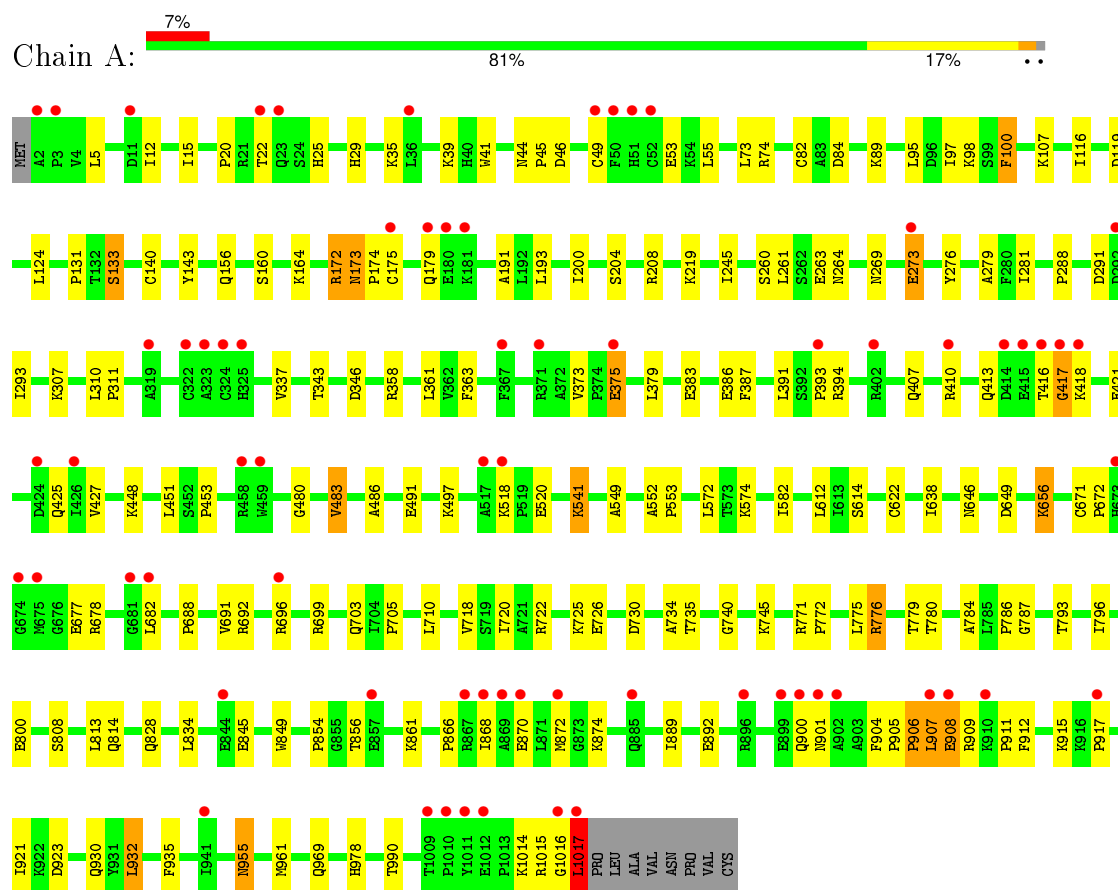
- Molecule 5 is water.

Mol	Chain	Residues	Atoms		ZeroOcc	AltConf
5	A	1148	Total	O	0	0
			1148	1148		
5	B	1125	Total	O	0	0
			1125	1125		
5	C	1176	Total	O	0	0
			1176	1176		
5	D	1190	Total	O	0	0
			1190	1190		

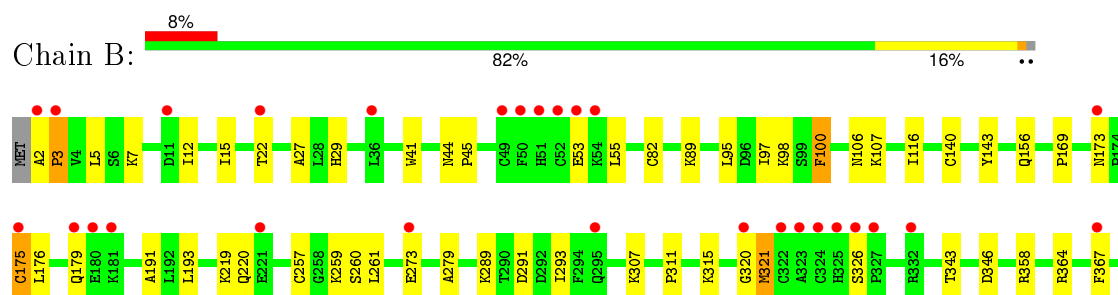
3 Residue-property plots

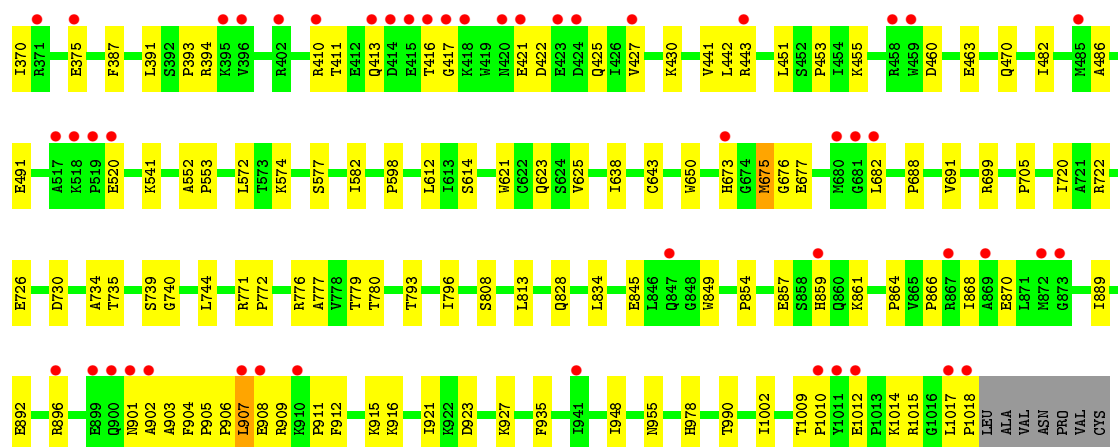
These plots are drawn for all protein, RNA and DNA chains in the entry. The first graphic for a chain summarises the proportions of errors displayed in the second graphic. The second graphic shows the sequence view annotated by issues in geometry and electron density. Residues are color-coded according to the number of geometric quality criteria for which they contain at least one outlier: green = 0, yellow = 1, orange = 2 and red = 3 or more. A red dot above a residue indicates a poor fit to the electron density ($RSRZ > 2$). Stretches of 2 or more consecutive residues without any outlier are shown as a green connector. Residues present in the sample, but not in the model, are shown in grey.

• Molecule 1: DIHYDROPYRIMIDINE DEHYDROGENASE

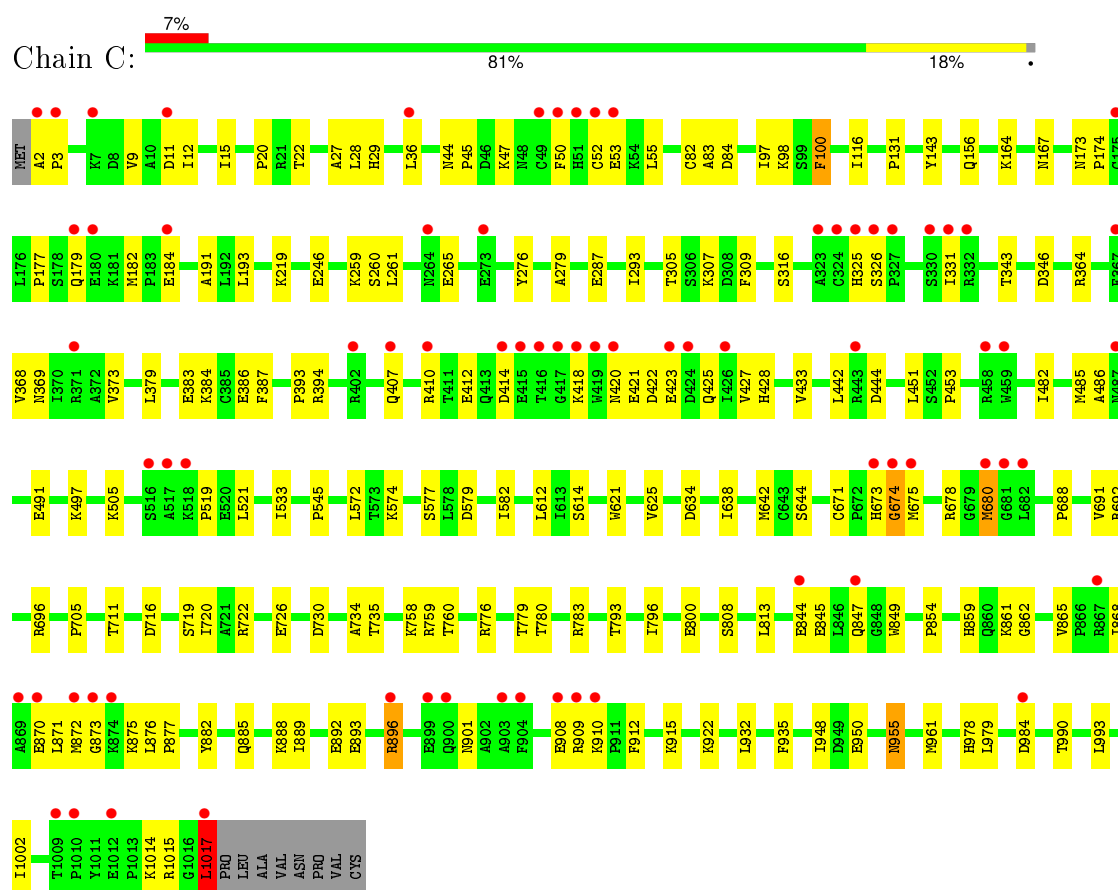


• Molecule 1: DIHYDROPYRIMIDINE DEHYDROGENASE

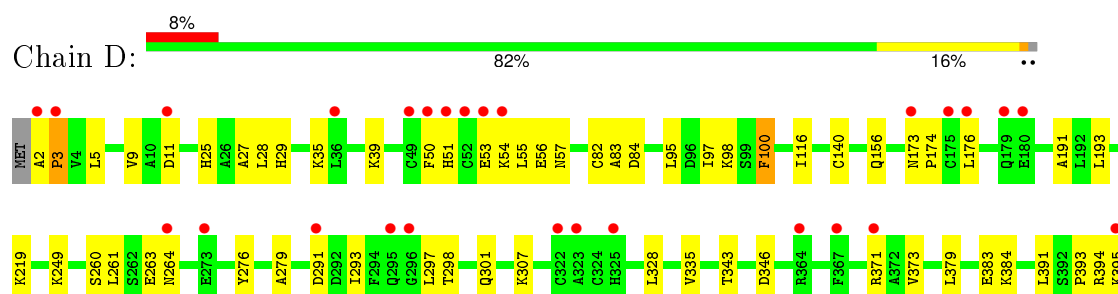


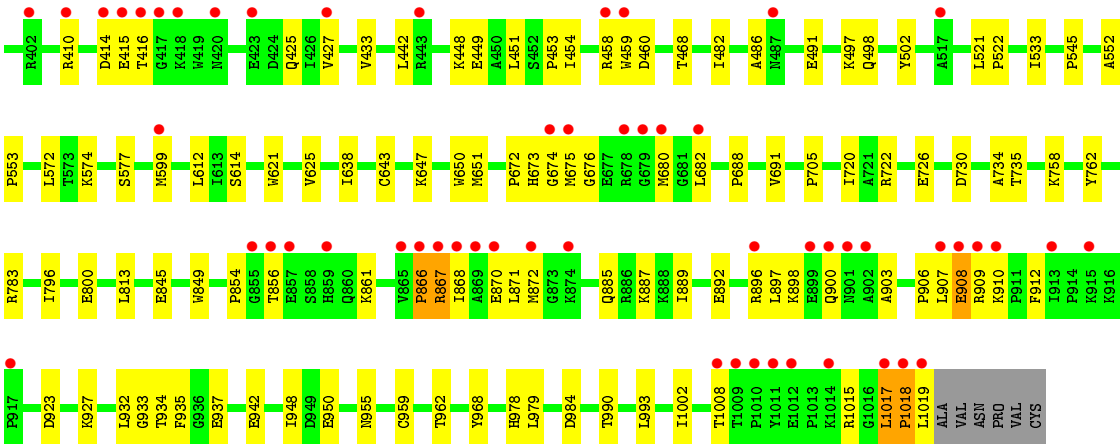


● Molecule 1: DIHYDROPYRIMIDINE DEHYDROGENASE



● Molecule 1: DIHYDROPYRIMIDINE DEHYDROGENASE





4 Data and refinement statistics

Property	Value	Source
Space group	P 1 21 1	Depositor
Cell constants a, b, c, α , β , γ	81.95Å 159.29Å 163.57Å 90.00° 96.04° 90.00°	Depositor
Resolution (Å)	19.97 – 1.90 24.99 – 1.90	Depositor EDS
% Data completeness (in resolution range)	98.9 (19.97-1.90) 99.0 (24.99-1.90)	Depositor EDS
R_{merge}	(Not available)	Depositor
R_{sym}	0.07	Depositor
$\langle I/\sigma(I) \rangle$ ¹	6.83 (at 1.90Å)	Xtriage
Refinement program	CNS 1.0	Depositor
R, R_{free}	0.174 , 0.196 0.173 , 0.195	Depositor DCC
R_{free} test set	6483 reflections (2.04%)	DCC
Wilson B-factor (Å ²)	12.7	Xtriage
Anisotropy	0.151	Xtriage
Bulk solvent k_{sol} (e/Å ³), B_{sol} (Å ²)	0.41 , 58.9	EDS
Estimated twinning fraction	No twinning to report.	Xtriage
L-test for twinning ²	$\langle L \rangle = 0.49$, $\langle L^2 \rangle = 0.32$	Xtriage
Outliers	0 of 326044 reflections	Xtriage
F_o, F_c correlation	0.94	EDS
Total number of atoms	36125	wwPDB-VP
Average B, all atoms (Å ²)	19.0	wwPDB-VP

Xtriage's analysis on translational NCS is as follows: *The largest off-origin peak in the Patterson function is 2.93% of the height of the origin peak. No significant pseudotranslation is detected.*

¹Intensities estimated from amplitudes.

²Theoretical values of $\langle |L| \rangle$, $\langle L^2 \rangle$ for acentric reflections are 0.5, 0.375 respectively for untwinned datasets, and 0.333, 0.2 for perfectly twinned datasets.

5 Model quality [i](#)

5.1 Standard geometry [i](#)

Bond lengths and bond angles in the following residue types are not validated in this section: FMN, SF4, FAD

The Z score for a bond length (or angle) is the number of standard deviations the observed value is removed from the expected value. A bond length (or angle) with $|Z| > 5$ is considered an outlier worth inspection. RMSZ is the root-mean-square of all Z scores of the bond lengths (or angles).

Mol	Chain	Bond lengths		Bond angles	
		RMSZ	# Z >5	RMSZ	# Z >5
1	A	0.35	0/7911	0.63	4/10721 (0.0%)
1	B	0.33	0/7919	0.61	0/10733
1	C	0.34	0/7911	0.63	3/10721 (0.0%)
1	D	0.35	0/7927	0.62	0/10744
All	All	0.34	0/31668	0.62	7/42919 (0.0%)

There are no bond length outliers.

The worst 5 of 7 bond angle outliers are listed below:

Mol	Chain	Res	Type	Atoms	Z	Observed(°)	Ideal(°)
1	C	1017	LEU	N-CA-C	7.26	130.59	111.00
1	A	172	ARG	NE-CZ-NH1	-6.34	117.13	120.30
1	C	1017	LEU	CA-CB-CG	-6.20	101.03	115.30
1	A	905	PRO	N-CA-C	5.18	125.56	112.10
1	C	305	THR	N-CA-C	-5.06	97.33	111.00

There are no chirality outliers.

There are no planarity outliers.

5.2 Too-close contacts [i](#)

In the following table, the Non-H and H(model) columns list the number of non-hydrogen atoms and hydrogen atoms in the chain respectively. The H(added) column lists the number of hydrogen atoms added and optimized by MolProbity. The Clashes column lists the number of clashes within the asymmetric unit, whereas Symm-Clashes lists symmetry related clashes.

Mol	Chain	Non-H	H(model)	H(added)	Clashes	Symm-Clashes
1	A	7750	0	7775	179	0
1	B	7757	0	7782	136	1

Continued on next page...

Continued from previous page...

Mol	Chain	Non-H	H(model)	H(added)	Clashes	Symm-Clashes
1	C	7750	0	7775	185	0
1	D	7765	0	7793	173	1
2	A	32	0	0	1	0
2	B	32	0	0	2	0
2	C	32	0	0	1	0
2	D	32	0	0	2	0
3	A	31	0	19	1	0
3	B	31	0	19	1	0
3	C	31	0	19	0	0
3	D	31	0	19	0	0
4	A	53	0	31	2	0
4	B	53	0	31	2	0
4	C	53	0	31	2	0
4	D	53	0	31	2	0
5	A	1148	0	0	38	0
5	B	1125	0	0	34	0
5	C	1176	0	0	39	0
5	D	1190	0	0	41	0
All	All	36125	0	31325	607	1

The all-atom clashscore is defined as the number of clashes found per 1000 atoms (including hydrogen atoms). The all-atom clashscore for this structure is 10.

The worst 5 of 607 close contacts within the same asymmetric unit are listed below, sorted by their clash magnitude.

Atom-1	Atom-2	Interatomic distance (Å)	Clash overlap (Å)
1:A:172:ARG:HD2	5:A:2301:HOH:O	1.29	1.28
1:C:427:VAL:HG13	1:D:410:ARG:CZ	1.78	1.12
1:A:373:VAL:HB	5:A:2254:HOH:O	1.57	1.02
1:C:427:VAL:HG13	1:D:410:ARG:NH1	1.75	1.01
1:C:579:ASP:O	1:C:582:ILE:HG12	1.68	0.93

All (1) symmetry-related close contacts are listed below. The label for Atom-2 includes the symmetry operator and encoded unit-cell translations to be applied.

Atom-1	Atom-2	Interatomic distance (Å)	Clash overlap (Å)
1:B:460:ASP:OD1	1:D:395:LYS:NZ[1_656]	2.16	0.04

5.3 Torsion angles

5.3.1 Protein backbone

In the following table, the Percentiles column shows the percent Ramachandran outliers of the chain as a percentile score with respect to all X-ray entries followed by that with respect to entries of similar resolution.

The Analysed column shows the number of residues for which the backbone conformation was analysed, and the total number of residues.

Mol	Chain	Analysed	Favoured	Allowed	Outliers	Percentiles	
1	A	1014/1025 (99%)	974 (96%)	32 (3%)	8 (1%)	24	11
1	B	1015/1025 (99%)	967 (95%)	36 (4%)	12 (1%)	16	5
1	C	1014/1025 (99%)	970 (96%)	38 (4%)	6 (1%)	30	17
1	D	1016/1025 (99%)	972 (96%)	34 (3%)	10 (1%)	19	7
All	All	4059/4100 (99%)	3883 (96%)	140 (3%)	36 (1%)	21	9

5 of 36 Ramachandran outliers are listed below:

Mol	Chain	Res	Type
1	A	904	PHE
1	A	908	GLU
1	B	675	MET
1	B	677	GLU
1	B	906	PRO

5.3.2 Protein sidechains

In the following table, the Percentiles column shows the percent sidechain outliers of the chain as a percentile score with respect to all X-ray entries followed by that with respect to entries of similar resolution.

The Analysed column shows the number of residues for which the sidechain conformation was analysed, and the total number of residues.

Mol	Chain	Analysed	Rotameric	Outliers	Percentiles	
1	A	846/854 (99%)	828 (98%)	18 (2%)	61	55
1	B	847/854 (99%)	837 (99%)	10 (1%)	78	76
1	C	846/854 (99%)	836 (99%)	10 (1%)	78	76
1	D	848/854 (99%)	843 (99%)	5 (1%)	90	90
All	All	3387/3416 (99%)	3344 (99%)	43 (1%)	76	73

5 of 43 residues with a non-rotameric sidechain are listed below:

Mol	Chain	Res	Type
1	B	100	PHE
1	B	675	MET
1	D	100	PHE
1	B	273	GLU
1	B	394	ARG

Some sidechains can be flipped to improve hydrogen bonding and reduce clashes. 5 of 15 such sidechains are listed below:

Mol	Chain	Res	Type
1	B	703	GLN
1	B	859	HIS
1	D	48	ASN
1	B	295	GLN
1	C	978	HIS

5.3.3 RNA ⓘ

There are no RNA molecules in this entry.

5.4 Non-standard residues in protein, DNA, RNA chains ⓘ

There are no non-standard protein/DNA/RNA residues in this entry.

5.5 Carbohydrates ⓘ

There are no carbohydrates in this entry.

5.6 Ligand geometry ⓘ

24 ligands are modelled in this entry.

In the following table, the Counts columns list the number of bonds (or angles) for which Mogul statistics could be retrieved, the number of bonds (or angles) that are observed in the model and the number of bonds (or angles) that are defined in the chemical component dictionary. The Link column lists molecule types, if any, to which the group is linked. The Z score for a bond length (or angle) is the number of standard deviations the observed value is removed from the expected value. A bond length (or angle) with $|Z| > 2$ is considered an outlier worth inspection. RMSZ is the root-mean-square of all Z scores of the bond lengths (or angles).

Mol	Type	Chain	Res	Link	Bond lengths			Bond angles		
					Counts	RMSZ	# Z > 2	Counts	RMSZ	# Z > 2
2	SF4	A	1026	1	0,12,12	0.00	-	0,24,24	0.00	-
2	SF4	A	1027	1	0,12,12	0.00	-	0,24,24	0.00	-
2	SF4	A	1028	1	0,12,12	0.00	-	0,24,24	0.00	-
2	SF4	A	1029	1	0,12,12	0.00	-	0,24,24	0.00	-
3	FMN	A	1030	-	32,33,33	2.66	10 (31%)	34,50,50	3.64	12 (35%)
4	FAD	A	1031	-	52,58,58	2.13	19 (36%)	52,89,89	2.00	11 (21%)
2	SF4	B	1026	1	0,12,12	0.00	-	0,24,24	0.00	-
2	SF4	B	1027	1	0,12,12	0.00	-	0,24,24	0.00	-
2	SF4	B	1028	1	0,12,12	0.00	-	0,24,24	0.00	-
2	SF4	B	1029	1	0,12,12	0.00	-	0,24,24	0.00	-
3	FMN	B	1030	-	32,33,33	2.58	10 (31%)	34,50,50	3.64	13 (38%)
4	FAD	B	1031	-	52,58,58	2.18	19 (36%)	52,89,89	2.00	11 (21%)
2	SF4	C	1026	1	0,12,12	0.00	-	0,24,24	0.00	-
2	SF4	C	1027	1	0,12,12	0.00	-	0,24,24	0.00	-
2	SF4	C	1028	1	0,12,12	0.00	-	0,24,24	0.00	-
2	SF4	C	1029	1	0,12,12	0.00	-	0,24,24	0.00	-
3	FMN	C	1030	-	32,33,33	2.71	10 (31%)	34,50,50	3.63	13 (38%)
4	FAD	C	1031	-	52,58,58	2.17	21 (40%)	52,89,89	2.01	11 (21%)
2	SF4	D	1026	1	0,12,12	0.00	-	0,24,24	0.00	-
2	SF4	D	1027	1	0,12,12	0.00	-	0,24,24	0.00	-
2	SF4	D	1028	1	0,12,12	0.00	-	0,24,24	0.00	-
2	SF4	D	1029	1	0,12,12	0.00	-	0,24,24	0.00	-
3	FMN	D	1030	-	32,33,33	2.65	10 (31%)	34,50,50	3.65	12 (35%)
4	FAD	D	1031	-	52,58,58	2.13	19 (36%)	52,89,89	2.02	11 (21%)

In the following table, the Chirals column lists the number of chiral outliers, the number of chiral centers analysed, the number of these observed in the model and the number defined in the chemical component dictionary. Similar counts are reported in the Torsion and Rings columns. '-' means no outliers of that kind were identified.

Mol	Type	Chain	Res	Link	Chirals	Torsions	Rings
2	SF4	A	1026	1	-	0/0/48/48	2/6/5/5
2	SF4	A	1027	1	-	0/0/48/48	2/6/5/5
2	SF4	A	1028	1	-	0/0/48/48	2/6/5/5
2	SF4	A	1029	1	-	0/0/48/48	2/6/5/5
3	FMN	A	1030	-	-	0/18/18/18	0/3/3/3
4	FAD	A	1031	-	-	0/30/50/50	0/6/6/6
2	SF4	B	1026	1	-	0/0/48/48	2/6/5/5
2	SF4	B	1027	1	-	0/0/48/48	2/6/5/5

Continued on next page...

Continued from previous page...

Mol	Type	Chain	Res	Link	Chirals	Torsions	Rings
2	SF4	B	1028	1	-	0/0/48/48	2/6/5/5
2	SF4	B	1029	1	-	0/0/48/48	2/6/5/5
3	FMN	B	1030	-	-	0/18/18/18	0/3/3/3
4	FAD	B	1031	-	-	0/30/50/50	0/6/6/6
2	SF4	C	1026	1	-	0/0/48/48	2/6/5/5
2	SF4	C	1027	1	-	0/0/48/48	2/6/5/5
2	SF4	C	1028	1	-	0/0/48/48	2/6/5/5
2	SF4	C	1029	1	-	0/0/48/48	2/6/5/5
3	FMN	C	1030	-	-	0/18/18/18	0/3/3/3
4	FAD	C	1031	-	-	0/30/50/50	0/6/6/6
2	SF4	D	1026	1	-	0/0/48/48	2/6/5/5
2	SF4	D	1027	1	-	0/0/48/48	2/6/5/5
2	SF4	D	1028	1	-	0/0/48/48	2/6/5/5
2	SF4	D	1029	1	-	0/0/48/48	2/6/5/5
3	FMN	D	1030	-	-	0/18/18/18	0/3/3/3
4	FAD	D	1031	-	-	0/30/50/50	0/6/6/6

The worst 5 of 118 bond length outliers are listed below:

Mol	Chain	Res	Type	Atoms	Z	Observed(Å)	Ideal(Å)
3	C	1030	FMN	C1'-N10	-9.07	1.38	1.48
3	A	1030	FMN	C1'-N10	-9.01	1.38	1.48
3	D	1030	FMN	C1'-N10	-8.93	1.38	1.48
3	B	1030	FMN	C1'-N10	-8.59	1.39	1.48
4	D	1031	FAD	PA-O2A	-4.62	1.35	1.55

The worst 5 of 94 bond angle outliers are listed below:

Mol	Chain	Res	Type	Atoms	Z	Observed(°)	Ideal(°)
3	D	1030	FMN	C4A-C4-N3	-8.51	112.40	123.52
3	A	1030	FMN	C4A-C4-N3	-8.48	112.43	123.52
3	B	1030	FMN	C4A-C4-N3	-8.40	112.54	123.52
3	C	1030	FMN	C4A-C4-N3	-8.38	112.57	123.52
3	B	1030	FMN	N3-C2-N1	-7.51	115.05	127.69

There are no chirality outliers.

There are no torsion outliers.

5 of 32 ring outliers are listed below:

Mol	Chain	Res	Type	Atoms
2	D	1029	SF4	FE1-FE2-S3-S4
2	B	1027	SF4	FE3-FE4-S1-S2
2	C	1029	SF4	FE1-FE2-S3-S4
2	B	1029	SF4	FE1-FE2-S3-S4
2	A	1029	SF4	FE1-FE2-S3-S4

12 monomers are involved in 16 short contacts:

Mol	Chain	Res	Type	Clashes	Symm-Clashes
2	A	1027	SF4	1	0
3	A	1030	FMN	1	0
4	A	1031	FAD	2	0
2	B	1026	SF4	1	0
2	B	1027	SF4	1	0
3	B	1030	FMN	1	0
4	B	1031	FAD	2	0
2	C	1026	SF4	1	0
4	C	1031	FAD	2	0
2	D	1026	SF4	1	0
2	D	1027	SF4	1	0
4	D	1031	FAD	2	0

5.7 Other polymers [i](#)

There are no such residues in this entry.

5.8 Polymer linkage issues [i](#)

There are no chain breaks in this entry.

6 Fit of model and data [i](#)

6.1 Protein, DNA and RNA chains [i](#)

In the following table, the column labelled ‘#RSRZ> 2’ contains the number (and percentage) of RSRZ outliers, followed by percent RSRZ outliers for the chain as percentile scores relative to all X-ray entries and entries of similar resolution. The OWAB column contains the minimum, median, 95th percentile and maximum values of the occupancy-weighted average B-factor per residue. The column labelled ‘Q< 0.9’ lists the number of (and percentage) of residues with an average occupancy less than 0.9.

Mol	Chain	Analysed	<RSRZ>	#RSRZ>2	OWAB(Å ²)	Q<0.9
1	A	1007/1025 (98%)	0.21	68 (6%) 20 23	7, 14, 36, 56	0
1	B	1007/1025 (98%)	0.23	77 (7%) 17 18	6, 14, 36, 55	0
1	C	1012/1025 (98%)	0.22	73 (7%) 18 20	6, 14, 38, 54	0
1	D	1012/1025 (98%)	0.24	82 (8%) 15 16	6, 14, 37, 55	0
All	All	4038/4100 (98%)	0.22	300 (7%) 17 19	6, 14, 37, 56	0

The worst 5 of 300 RSRZ outliers are listed below:

Mol	Chain	Res	Type	RSRZ
1	B	2	ALA	18.1
1	A	1017	LEU	16.1
1	D	2	ALA	16.0
1	C	1017	LEU	14.9
1	A	2	ALA	14.4

6.2 Non-standard residues in protein, DNA, RNA chains [i](#)

There are no non-standard protein/DNA/RNA residues in this entry.

6.3 Carbohydrates [i](#)

There are no carbohydrates in this entry.

6.4 Ligands [i](#)

In the following table, the Atoms column lists the number of modelled atoms in the group and the number defined in the chemical component dictionary. LLDF column lists the quality of electron density of the group with respect to its neighbouring residues in protein, DNA or RNA chains. The B-factors column lists the minimum, median, 95th percentile and maximum values of B factors

of atoms in the group. The column labelled 'Q< 0.9' lists the number of atoms with occupancy less than 0.9.

Mol	Type	Chain	Res	Atoms	RSCC	RSR	LLDF	B-factors(\AA^2)	Q<0.9
2	SF4	A	1027	8/8	0.97	0.10	0.63	8,9,11,12	0
2	SF4	B	1026	8/8	0.97	0.10	0.51	10,10,12,12	0
2	SF4	C	1027	8/8	0.97	0.10	0.42	8,9,11,11	0
3	FMN	A	1030	31/31	0.96	0.09	0.11	8,10,13,13	0
4	FAD	B	1031	53/53	0.97	0.10	0.10	9,12,14,15	0
2	SF4	A	1028	8/8	0.97	0.09	0.00	9,11,11,13	0
4	FAD	A	1031	53/53	0.96	0.10	-0.04	8,11,13,14	0
2	SF4	B	1029	8/8	0.97	0.09	-0.10	10,11,13,13	0
2	SF4	D	1028	8/8	0.97	0.09	-0.11	9,10,12,12	0
2	SF4	C	1026	8/8	0.97	0.09	-0.13	10,10,12,12	0
2	SF4	A	1026	8/8	0.97	0.09	-0.17	10,10,12,12	0
3	FMN	B	1030	31/31	0.97	0.09	-0.18	7,10,12,15	0
2	SF4	C	1029	8/8	0.97	0.09	-0.19	9,10,12,12	0
3	FMN	D	1030	31/31	0.97	0.08	-0.20	7,10,12,13	0
2	SF4	B	1028	8/8	0.97	0.09	-0.23	10,11,12,13	0
2	SF4	D	1027	8/8	0.97	0.09	-0.28	7,8,10,11	0
2	SF4	D	1029	8/8	0.97	0.09	-0.38	10,11,12,13	0
4	FAD	D	1031	53/53	0.97	0.09	-0.42	8,11,13,14	0
3	FMN	C	1030	31/31	0.97	0.09	-0.44	8,9,12,15	0
2	SF4	D	1026	8/8	0.97	0.09	-0.49	9,10,11,12	0
2	SF4	A	1029	8/8	0.97	0.09	-0.55	10,11,13,13	0
2	SF4	B	1027	8/8	0.97	0.09	-0.61	8,9,11,11	0
4	FAD	C	1031	53/53	0.97	0.08	-0.64	7,11,14,15	0
2	SF4	C	1028	8/8	0.97	0.09	-0.82	8,9,10,12	0

6.5 Other polymers [i](#)

There are no such residues in this entry.