



wwPDB X-ray Structure Validation Summary Report ⓘ

Feb 1, 2016 – 05:08 PM GMT

PDB ID : 4HAW
Title : Crystal structure of CRM1 inhibitor Leptomycin B in complex with CRM1(K548A)-Ran-RanBP1
Authors : Sun, Q.; Chook, Y.M.
Deposited on : 2012-09-27
Resolution : 1.90 Å(reported)

This is a wwPDB X-ray Structure Validation Summary Report for a publicly released PDB entry.
We welcome your comments at validation@mail.wwpdb.org
A user guide is available at
<http://wwpdb.org/validation/2016/XrayValidationReportHelp>
with specific help available everywhere you see the ⓘ symbol.

The following versions of software and data (see [references ⓘ](#)) were used in the production of this report:

MolProbity : 4.02b-467
Mogul : 1.7 (RC4), CSD as536be (2015)
Xtriage (Phenix) : 1.9-1692
EDS : rb-20026688
Percentile statistics : 20151230.v01 (using entries in the PDB archive December 30th 2015)
Refmac : 5.8.0135
CCP4 : 6.5.0
Ideal geometry (proteins) : Engh & Huber (2001)
Ideal geometry (DNA, RNA) : Parkinson et al. (1996)
Validation Pipeline (wwPDB-VP) : trunk26865

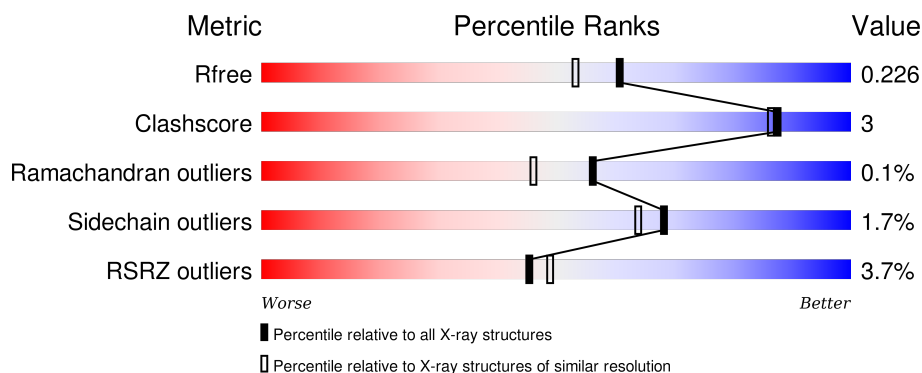
1 Overall quality at a glance ⓘ

The following experimental techniques were used to determine the structure:

X-RAY DIFFRACTION

The reported resolution of this entry is 1.90 Å.

Percentile scores (ranging between 0-100) for global validation metrics of the entry are shown in the following graphic. The table shows the number of entries on which the scores are based.



Metric	Whole archive (#Entries)	Similar resolution (#Entries, resolution range(Å))
R_{free}	91344	4755 (1.90-1.90)
Clashscore	102246	5398 (1.90-1.90)
Ramachandran outliers	100387	5338 (1.90-1.90)
Sidechain outliers	100360	5339 (1.90-1.90)
RSRZ outliers	91569	4766 (1.90-1.90)

The table below summarises the geometric issues observed across the polymeric chains and their fit to the electron density. The red, orange, yellow and green segments on the lower bar indicate the fraction of residues that contain outliers for ≥ 3 , 2, 1 and 0 types of geometric quality criteria. A grey segment represents the fraction of residues that are not modelled. The numeric value for each fraction is indicated below the corresponding segment, with a dot representing fractions $\leq 5\%$. The upper red bar (where present) indicates the fraction of residues that have poor fit to the electron density. The numeric value is given above the bar.

Mol	Chain	Length	Quality of chain
1	A	216	<div> <div>4%</div> <div>85%</div> <div>5% • 9%</div> </div>
2	B	140	<div> <div>11%</div> <div>86%</div> <div>5% •• 6%</div> </div>
3	C	1023	<div> <div>2%</div> <div>92%</div> <div>6% ••</div> </div>

The following table lists non-polymeric compounds, carbohydrate monomers and non-standard residues in protein, DNA, RNA chains that are outliers for geometric or electron-density-fit criteria:

Mol	Type	Chain	Res	Chirality	Geometry	Clashes	Electron density
7	EDO	A	304	-	-	-	X

2 Entry composition

There are 10 unique types of molecules in this entry. The entry contains 12385 atoms, of which 0 are hydrogens and 0 are deuteriums.

In the tables below, the ZeroOcc column contains the number of atoms modelled with zero occupancy, the AltConf column contains the number of residues with at least one atom in alternate conformation and the Trace column contains the number of residues modelled with at most 2 atoms.

- Molecule 1 is a protein called GTP-binding nuclear protein Ran.

Mol	Chain	Residues	Atoms					ZeroOcc	AltConf	Trace
1	A	196	Total	C	N	O	S	0	4	0
			1609	1038	279	286	6			

- Molecule 2 is a protein called Ran-specific GTPase-activating protein 1.

Mol	Chain	Residues	Atoms					ZeroOcc	AltConf	Trace
2	B	131	Total	C	N	O	S	0	1	0
			1088	692	189	202	5			

There is a discrepancy between the modelled and reference sequences:

Chain	Residue	Modelled	Actual	Comment	Reference
B	98	LYS	ALA	CONFLICT	UNP P41920

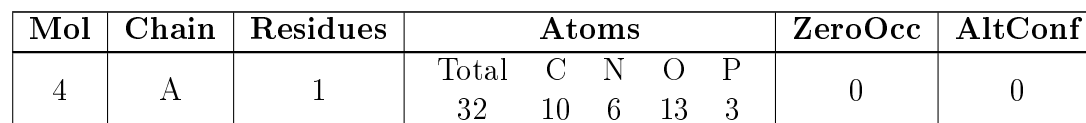
- Molecule 3 is a protein called Exportin-1.

Mol	Chain	Residues	Atoms					ZeroOcc	AltConf	Trace
3	C	1012	Total	C	N	O	S	0	30	0
			8371	5378	1372	1579	42			

There are 5 discrepancies between the modelled and reference sequences:

Chain	Residue	Modelled	Actual	Comment	Reference
C	-1	GLY	-	EXPRESSION TAG	UNP P30822
C	0	ALA	-	EXPRESSION TAG	UNP P30822
C	539	CYS	THR	ENGINEERED MUTATION	UNP P30822
C	548	ALA	LYS	ENGINEERED MUTATION	UNP P30822
C	1022	CYS	TYR	ENGINEERED MUTATION	UNP P30822

- Molecule 4 is PHOSPHOAMINOPHOSPHONIC ACID-GUANYLATE ESTER (three-letter code: GNP) (formula: C₁₀H₁₇N₆O₁₃P₃).



- | Mol | Chain | Residues | Atoms | ZeroOcc | AltConf |
|-----|-------|----------|-----------------|---------|---------|
| 5 | A | 1 | Total Mg
1 1 | 0 | 0 |
| 5 | C | 1 | Total Mg
1 1 | 0 | 0 |

- GOL
-
- Chemical structure diagram showing a zig-zag chain of three carbon atoms (C1, C2, C3) and three hydroxyl groups (HO, OH, OH) labeled O1, O2, and O3 respectively. The structure is drawn with green lines for the carbon backbone and red lines for the hydroxyl groups.

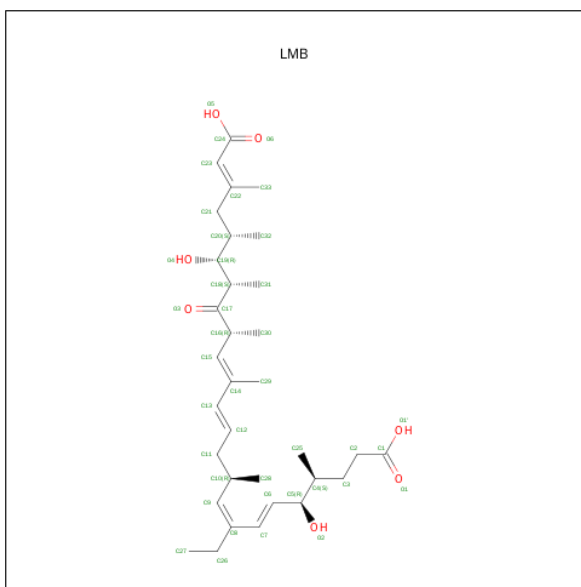
Mol	Chain	Residues	Atoms			ZeroOcc	AltConf
6	A	1	Total	C	O	0	0
			6	3	3		
6	C	1	Total	C	O	0	0
			6	3	3		
6	C	1	Total	C	O	0	0
			6	3	3		

- Molecule 7 is 1,2-ETHANEDIOL (three-letter code: EDO) (formula: C₂H₆O₂).



Mol	Chain	Residues	Atoms			ZeroOcc	AltConf
7	A	1	Total	C	O	0	0
			4	2	2		
7	C	1	Total	C	O	0	0
			4	2	2		

- Molecule 8 is LEPTOMYCIN B, BOUND FORM (three-letter code: LMB) (formula: C₃₃H₅₂O₇).



Mol	Chain	Residues	Atoms			ZeroOcc	AltConf
8	C	1	Total	C	O	0	0
			40	33	7		

- Molecule 9 is CHLORIDE ION (three-letter code: CL) (formula: Cl).

Mol	Chain	Residues	Atoms	ZeroOcc	AltConf
9	C	3	Total Cl 3 3	0	0

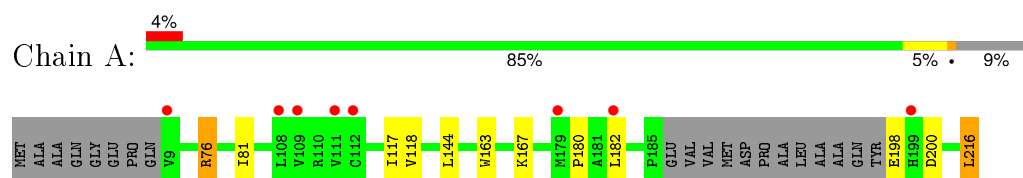
- Molecule 10 is water.

Mol	Chain	Residues	Atoms	ZeroOcc	AltConf
10	A	199	Total O 199 199	0	0
10	B	66	Total O 66 66	0	0
10	C	949	Total O 949 949	0	0

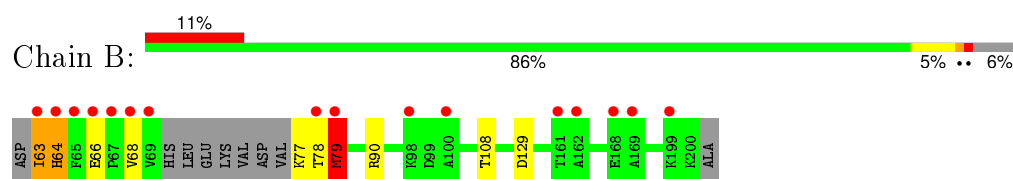
3 Residue-property plots [i](#)

These plots are drawn for all protein, RNA and DNA chains in the entry. The first graphic for a chain summarises the proportions of errors displayed in the second graphic. The second graphic shows the sequence view annotated by issues in geometry and electron density. Residues are color-coded according to the number of geometric quality criteria for which they contain at least one outlier: green = 0, yellow = 1, orange = 2 and red = 3 or more. A red dot above a residue indicates a poor fit to the electron density ($\text{RSRZ} > 2$). Stretches of 2 or more consecutive residues without any outlier are shown as a green connector. Residues present in the sample, but not in the model, are shown in grey.

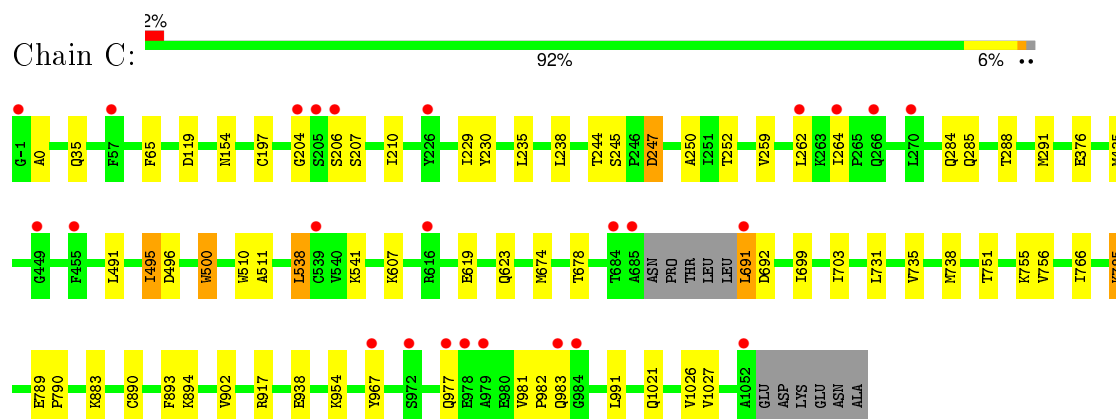
- Molecule 1: GTP-binding nuclear protein Ran



- Molecule 2: Ran-specific GTPase-activating protein 1



- Molecule 3: Exportin-1



4 Data and refinement statistics

Property	Value	Source
Space group	P 43 21 2	Depositor
Cell constants a, b, c, α , β , γ	106.57Å 106.57Å 306.97Å 90.00° 90.00° 90.00°	Depositor
Resolution (Å)	50.00 – 1.90 47.10 – 1.90	Depositor EDS
% Data completeness (in resolution range)	97.0 (50.00-1.90) 97.0 (47.10-1.90)	Depositor EDS
R_{merge}	(Not available)	Depositor
R_{sym}	(Not available)	Depositor
$\langle I/\sigma(I) \rangle$ ¹	1.88 (at 1.90Å)	Xtriage
Refinement program	REFMAC 5.6.0117	Depositor
R, R_{free}	0.165 , 0.209 0.190 , 0.226	Depositor DCC
R_{free} test set	6801 reflections (5.28%)	DCC
Wilson B-factor (Å ²)	29.7	Xtriage
Anisotropy	0.276	Xtriage
Bulk solvent k_{sol} (e/Å ³), B_{sol} (Å ²)	0.33 , 45.9	EDS
Estimated twinning fraction	No twinning to report.	Xtriage
L-test for twinning ²	$\langle L \rangle = 0.48$, $\langle L^2 \rangle = 0.30$	Xtriage
Outliers	0 of 135620 reflections	Xtriage
F_o, F_c correlation	0.96	EDS
Total number of atoms	12385	wwPDB-VP
Average B, all atoms (Å ²)	30.0	wwPDB-VP

Xtriage's analysis on translational NCS is as follows: *The largest off-origin peak in the Patterson function is 4.16% of the height of the origin peak. No significant pseudotranslation is detected.*

¹Intensities estimated from amplitudes.

²Theoretical values of $\langle |L| \rangle$, $\langle L^2 \rangle$ for acentric reflections are 0.5, 0.375 respectively for untwinned datasets, and 0.333, 0.2 for perfectly twinned datasets.

5 Model quality [i](#)

5.1 Standard geometry [i](#)

Bond lengths and bond angles in the following residue types are not validated in this section: GOL, GNP, CL, MG, EDO, LMB

The Z score for a bond length (or angle) is the number of standard deviations the observed value is removed from the expected value. A bond length (or angle) with $|Z| > 5$ is considered an outlier worth inspection. RMSZ is the root-mean-square of all Z scores of the bond lengths (or angles).

Mol	Chain	Bond lengths		Bond angles	
		RMSZ	# Z >5	RMSZ	# Z >5
1	A	0.52	0/1653	0.62	0/2234
2	B	0.52	1/1107 (0.1%)	0.65	2/1477 (0.1%)
3	C	0.51	3/8577 (0.0%)	0.56	0/11618
All	All	0.52	4/11337 (0.0%)	0.58	2/15329 (0.0%)

All (4) bond length outliers are listed below:

Mol	Chain	Res	Type	Atoms	Z	Observed(Å)	Ideal(Å)
2	B	79	MET	C-N	-5.75	1.20	1.34
3	C	376	GLU	C-N	5.68	1.45	1.34
3	C	510	TRP	CD2-CE2	5.13	1.47	1.41
3	C	500	TRP	CD2-CE2	5.07	1.47	1.41

All (2) bond angle outliers are listed below:

Mol	Chain	Res	Type	Atoms	Z	Observed(°)	Ideal(°)
2	B	79	MET	O-C-N	6.55	133.18	122.70
2	B	79	MET	CA-C-N	-5.19	105.79	117.20

There are no chirality outliers.

There are no planarity outliers.

5.2 Too-close contacts [i](#)

In the following table, the Non-H and H(model) columns list the number of non-hydrogen atoms and hydrogen atoms in the chain respectively. The H(added) column lists the number of hydrogen atoms added and optimized by MolProbity. The Clashes column lists the number of clashes within the asymmetric unit, whereas Symm-Clashes lists symmetry related clashes.

Mol	Chain	Non-H	H(model)	H(added)	Clashes	Symm-Clashes
1	A	1609	0	1622	9	0
2	B	1088	0	1091	10	1
3	C	8371	0	8449	42	0
4	A	32	0	13	0	0
5	A	1	0	0	0	0
5	C	1	0	0	0	0
6	A	6	0	8	1	0
6	C	12	0	16	0	0
7	A	4	0	6	0	0
7	C	4	0	6	0	0
8	C	40	0	49	2	0
9	C	3	0	0	0	0
10	A	199	0	0	1	0
10	B	66	0	0	1	0
10	C	949	0	0	6	3
All	All	12385	0	11260	59	3

The all-atom clashscore is defined as the number of clashes found per 1000 atoms (including hydrogen atoms). The all-atom clashscore for this structure is 3.

The worst 5 of 59 close contacts within the same asymmetric unit are listed below, sorted by their clash magnitude.

Atom-1	Atom-2	Interatomic distance (Å)	Clash overlap (Å)
3:C:981:VAL:HG22	3:C:982:PRO:HD2	1.41	1.00
3:C:691:LEU:HD13	3:C:738:MET:CE	2.08	0.84
2:B:64:HIS:O	2:B:64:HIS:CD2	2.40	0.74
3:C:981:VAL:HG22	3:C:982:PRO:CD	2.18	0.74
3:C:981:VAL:CG2	3:C:982:PRO:HD2	2.19	0.70

All (3) symmetry-related close contacts are listed below. The label for Atom-2 includes the symmetry operator and encoded unit-cell translations to be applied.

Atom-1	Atom-2	Interatomic distance (Å)	Clash overlap (Å)
10:C:2111:HOH:O	10:C:2115:HOH:O[7_465]	1.33	0.87
10:C:2116:HOH:O	10:C:2125:HOH:O[7_465]	1.34	0.86
2:B:66:GLU:OE2	10:C:2000:HOH:O[6_565]	2.13	0.07

5.3 Torsion angles

5.3.1 Protein backbone

In the following table, the Percentiles column shows the percent Ramachandran outliers of the chain as a percentile score with respect to all X-ray entries followed by that with respect to entries of similar resolution.

The Analysed column shows the number of residues for which the backbone conformation was analysed, and the total number of residues.

Mol	Chain	Analysed	Favoured	Allowed	Outliers	Percentiles	
1	A	196/216 (91%)	190 (97%)	6 (3%)	0	100	100
2	B	128/140 (91%)	121 (94%)	6 (5%)	1 (1%)	24	11
3	C	1038/1023 (102%)	1024 (99%)	14 (1%)	0	100	100
All	All	1362/1379 (99%)	1335 (98%)	26 (2%)	1 (0%)	56	46

All (1) Ramachandran outliers are listed below:

Mol	Chain	Res	Type
2	B	79	MET

5.3.2 Protein sidechains

In the following table, the Percentiles column shows the percent sidechain outliers of the chain as a percentile score with respect to all X-ray entries followed by that with respect to entries of similar resolution.

The Analysed column shows the number of residues for which the sidechain conformation was analysed, and the total number of residues.

Mol	Chain	Analysed	Rotameric	Outliers	Percentiles	
1	A	175/185 (95%)	171 (98%)	4 (2%)	58	51
2	B	115/122 (94%)	111 (96%)	4 (4%)	43	31
3	C	952/932 (102%)	937 (98%)	15 (2%)	70	66
All	All	1242/1239 (100%)	1219 (98%)	23 (2%)	68	59

5 of 23 residues with a non-rotameric sidechain are listed below:

Mol	Chain	Res	Type
3	C	247[A]	ASP
3	C	291	MET

Continued on next page...

Continued from previous page...

Mol	Chain	Res	Type
3	C	983	GLN
3	C	247[B]	ASP
3	C	495	ILE

Some sidechains can be flipped to improve hydrogen bonding and reduce clashes. All (5) such sidechains are listed below:

Mol	Chain	Res	Type
1	A	62	ASN
2	B	64	HIS
3	C	203	GLN
3	C	434	ASN
3	C	993	GLN

5.3.3 RNA [i](#)

There are no RNA molecules in this entry.

5.4 Non-standard residues in protein, DNA, RNA chains [i](#)

There are no non-standard protein/DNA/RNA residues in this entry.

5.5 Carbohydrates [i](#)

There are no carbohydrates in this entry.

5.6 Ligand geometry [i](#)

Of 12 ligands modelled in this entry, 5 are monoatomic - leaving 7 for Mogul analysis.

In the following table, the Counts columns list the number of bonds (or angles) for which Mogul statistics could be retrieved, the number of bonds (or angles) that are observed in the model and the number of bonds (or angles) that are defined in the chemical component dictionary. The Link column lists molecule types, if any, to which the group is linked. The Z score for a bond length (or angle) is the number of standard deviations the observed value is removed from the expected value. A bond length (or angle) with $|Z| > 2$ is considered an outlier worth inspection. RMSZ is the root-mean-square of all Z scores of the bond lengths (or angles).

Mol	Type	Chain	Res	Link	Bond lengths			Bond angles		
					Counts	RMSZ	$\# Z > 2$	Counts	RMSZ	$\# Z > 2$
4	GNP	A	301	5	28,34,34	1.65	6 (21%)	33,54,54	1.98	7 (21%)

Mol	Type	Chain	Res	Link	Bond lengths			Bond angles		
					Counts	RMSZ	# Z > 2	Counts	RMSZ	# Z > 2
6	GOL	A	303	-	5,5,5	0.25	0	5,5,5	0.33	0
7	EDO	A	304	-	3,3,3	0.51	0	2,2,2	0.15	0
8	LMB	C	1101	3	31,39,39	0.88	2 (6%)	30,51,51	1.25	5 (16%)
6	GOL	C	1102	-	5,5,5	0.40	0	5,5,5	0.48	0
6	GOL	C	1103	-	5,5,5	0.33	0	5,5,5	0.24	0
7	EDO	C	1104	-	3,3,3	0.58	0	2,2,2	0.33	0

In the following table, the Chirals column lists the number of chiral outliers, the number of chiral centers analysed, the number of these observed in the model and the number defined in the chemical component dictionary. Similar counts are reported in the Torsion and Rings columns. '-' means no outliers of that kind were identified.

Mol	Type	Chain	Res	Link	Chirals	Torsions	Rings
4	GNP	A	301	5	-	0/12/38/38	0/3/3/3
6	GOL	A	303	-	-	0/4/4/4	0/0/0/0
7	EDO	A	304	-	-	0/1/1/1	0/0/0/0
8	LMB	C	1101	3	-	0/50/54/54	0/0/0/0
6	GOL	C	1102	-	-	0/4/4/4	0/0/0/0
6	GOL	C	1103	-	-	0/4/4/4	0/0/0/0
7	EDO	C	1104	-	-	0/1/1/1	0/0/0/0

The worst 5 of 8 bond length outliers are listed below:

Mol	Chain	Res	Type	Atoms	Z	Observed(Å)	Ideal(Å)
8	C	1101	LMB	C16-C17	-2.86	1.50	1.52
4	A	301	GNP	O4'-C1'	2.03	1.43	1.41
8	C	1101	LMB	C7-C8	2.65	1.50	1.44
4	A	301	GNP	PG-O1G	2.68	1.49	1.46
4	A	301	GNP	C5-C4	3.37	1.48	1.40

The worst 5 of 12 bond angle outliers are listed below:

Mol	Chain	Res	Type	Atoms	Z	Observed(°)	Ideal(°)
4	A	301	GNP	C5-C6-N1	-4.67	117.21	123.59
4	A	301	GNP	O1G-PG-N3B	-4.43	105.10	111.90
4	A	301	GNP	C6-C5-C4	-3.59	116.61	120.90
4	A	301	GNP	N3-C2-N1	-2.99	122.89	127.44
8	C	1101	LMB	C12-C13-C14	-2.81	121.46	125.75

There are no chirality outliers.

There are no torsion outliers.

There are no ring outliers.

2 monomers are involved in 3 short contacts:

Mol	Chain	Res	Type	Clashes	Symm-Clashes
6	A	303	GOL	1	0
8	C	1101	LMB	2	0

5.7 Other polymers [i](#)

There are no such residues in this entry.

5.8 Polymer linkage issues [i](#)

There are no chain breaks in this entry.

6 Fit of model and data [i](#)

6.1 Protein, DNA and RNA chains [i](#)

In the following table, the column labelled ‘#RSRZ> 2’ contains the number (and percentage) of RSRZ outliers, followed by percent RSRZ outliers for the chain as percentile scores relative to all X-ray entries and entries of similar resolution. The OWAB column contains the minimum, median, 95th percentile and maximum values of the occupancy-weighted average B-factor per residue. The column labelled ‘Q< 0.9’ lists the number of (and percentage) of residues with an average occupancy less than 0.9.

Mol	Chain	Analysed	<RSRZ>	#RSRZ>2	OWAB(Å ²)	Q<0.9
1	A	196/216 (90%)	0.08	8 (4%) 41 45	17, 24, 44, 78	0
2	B	131/140 (93%)	0.59	16 (12%) 5 6	20, 33, 56, 72	0
3	C	1012/1023 (98%)	-0.10	25 (2%) 61 64	14, 26, 48, 78	0
All	All	1339/1379 (97%)	-0.00	49 (3%) 45 49	14, 26, 49, 78	0

The worst 5 of 49 RSRZ outliers are listed below:

Mol	Chain	Res	Type	RSRZ
2	B	64	HIS	7.7
2	B	63	ILE	6.2
3	C	979	ALA	5.6
3	C	270	LEU	5.5
1	A	182	LEU	5.0

6.2 Non-standard residues in protein, DNA, RNA chains [i](#)

There are no non-standard protein/DNA/RNA residues in this entry.

6.3 Carbohydrates [i](#)

There are no carbohydrates in this entry.

6.4 Ligands [i](#)

In the following table, the Atoms column lists the number of modelled atoms in the group and the number defined in the chemical component dictionary. LLDF column lists the quality of electron density of the group with respect to its neighbouring residues in protein, DNA or RNA chains. The B-factors column lists the minimum, median, 95th percentile and maximum values of B factors

of atoms in the group. The column labelled 'Q< 0.9' lists the number of atoms with occupancy less than 0.9.

Mol	Type	Chain	Res	Atoms	RSCC	RSR	LLDF	B-factors(\AA^2)	Q<0.9
7	EDO	A	304	4/4	0.90	0.31	4.18	51,53,55,56	0
6	GOL	C	1102	6/6	0.83	0.27	1.82	46,53,65,69	0
9	CL	C	1106	1/1	0.94	0.12	1.62	58,58,58,58	0
7	EDO	C	1104	4/4	0.90	0.11	1.08	42,49,50,50	0
9	CL	C	1107	1/1	0.95	0.12	1.07	72,72,72,72	0
8	LMB	C	1101	40/40	0.89	0.16	1.04	27,40,52,55	0
9	CL	C	1105	1/1	0.91	0.15	0.73	62,62,62,62	0
5	MG	A	302	1/1	0.97	0.07	-0.44	20,20,20,20	0
4	GNP	A	301	32/32	0.99	0.08	-0.77	17,20,21,22	0
6	GOL	A	303	6/6	0.64	0.16	-	76,78,78,78	0
6	GOL	C	1103	6/6	0.85	0.15	-	49,50,53,55	0
5	MG	C	1108	1/1	0.77	0.12	-	81,81,81,81	0

6.5 Other polymers [i](#)

There are no such residues in this entry.