



# wwPDB X-ray Structure Validation Summary Report ⓘ

Feb 1, 2016 – 09:09 AM GMT

PDB ID : 3HB9  
Title : Crystal Structure of S. aureus Pyruvate Carboxylase A610T Mutant  
Authors : Tong, L.; Yu, L.P.C.  
Deposited on : 2009-05-04  
Resolution : 2.90 Å(reported)

This is a wwPDB X-ray Structure Validation Summary Report for a publicly released PDB entry.  
We welcome your comments at [validation@mail.wwpdb.org](mailto:validation@mail.wwpdb.org)  
A user guide is available at  
<http://wwpdb.org/validation/2016/XrayValidationReportHelp>  
with specific help available everywhere you see the ⓘ symbol.

---

The following versions of software and data (see [references ⓘ](#)) were used in the production of this report:

MolProbity : 4.02b-467  
Mogul : 1.7 (RC4), CSD as536be (2015)  
Xtriage (Phenix) : 1.9-1692  
EDS : rb-20026688  
Percentile statistics : 20151230.v01 (using entries in the PDB archive December 30th 2015)  
Refmac : 5.8.0135  
CCP4 : 6.5.0  
Ideal geometry (proteins) : Engh & Huber (2001)  
Ideal geometry (DNA, RNA) : Parkinson et al. (1996)  
Validation Pipeline (wwPDB-VP) : trunk26865

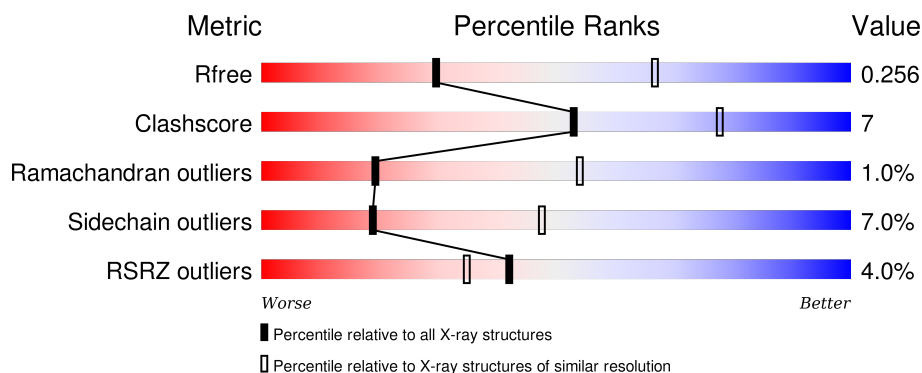
# 1 Overall quality at a glance

The following experimental techniques were used to determine the structure:

## *X-RAY DIFFRACTION*

The reported resolution of this entry is 2.90 Å.

Percentile scores (ranging between 0-100) for global validation metrics of the entry are shown in the following graphic. The table shows the number of entries on which the scores are based.



Metric	Whole archive (#Entries)	Similar resolution (#Entries, resolution range(Å))
$R_{free}$	91344	1451 (2.90-2.90)
Clashscore	102246	1668 (2.90-2.90)
Ramachandran outliers	100387	1630 (2.90-2.90)
Sidechain outliers	100360	1632 (2.90-2.90)
RSRZ outliers	91569	1456 (2.90-2.90)

The table below summarises the geometric issues observed across the polymeric chains and their fit to the electron density. The red, orange, yellow and green segments on the lower bar indicate the fraction of residues that contain outliers for  $\geq 3$ , 2, 1 and 0 types of geometric quality criteria. A grey segment represents the fraction of residues that are not modelled. The numeric value for each fraction is indicated below the corresponding segment, with a dot representing fractions  $\leq 5\%$ . The upper red bar (where present) indicates the fraction of residues that have poor fit to the electron density. The numeric value is given above the bar.

Mol	Chain	Length	Quality of chain
1	A	1150	<div> <div>5%</div> <div>79%</div> <div>17%</div> <div>••</div> </div>
1	B	1150	<div> <div>4%</div> <div>75%</div> <div>16%</div> <div>• 7%</div> </div>
1	C	1150	<div> <div>3%</div> <div>74%</div> <div>16%</div> <div>• 7%</div> </div>
1	D	1150	<div> <div>3%</div> <div>70%</div> <div>14%</div> <div>• 14%</div> </div>

## 2 Entry composition

There are 4 unique types of molecules in this entry. The entry contains 33840 atoms, of which 0 are hydrogens and 0 are deuteriums.

In the tables below, the ZeroOcc column contains the number of atoms modelled with zero occupancy, the AltConf column contains the number of residues with at least one atom in alternate conformation and the Trace column contains the number of residues modelled with at most 2 atoms.

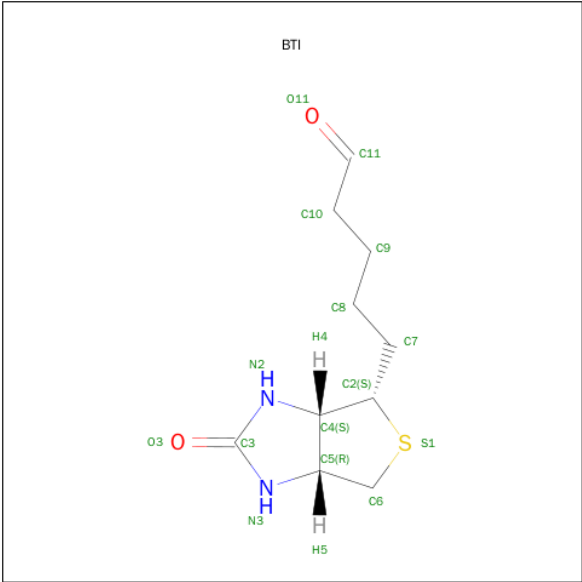
- Molecule 1 is a protein called Pyruvate carboxylase.

Mol	Chain	Residues	Atoms					ZeroOcc	AltConf	Trace
1	A	1133	Total	C	N	O	S	0	0	0
			8942	5665	1505	1742	30			
1	B	1074	Total	C	N	O	S	0	0	0
			8467	5366	1427	1645	29			
1	C	1067	Total	C	N	O	S	0	0	0
			8443	5351	1421	1641	30			
1	D	993	Total	C	N	O	S	0	0	0
			7870	4995	1326	1521	28			

There are 4 discrepancies between the modelled and reference sequences:

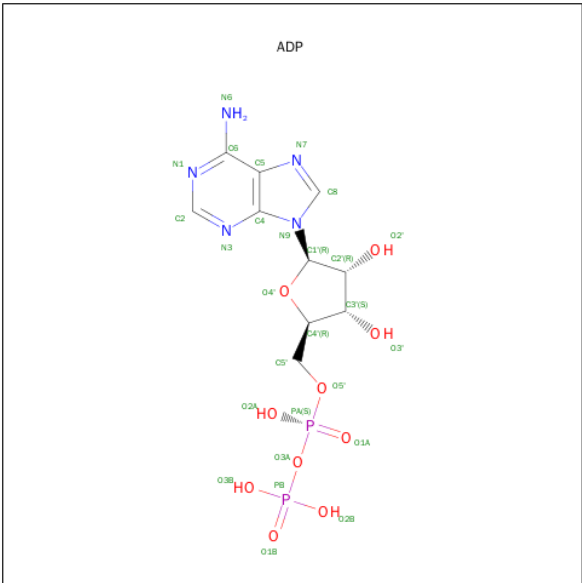
Chain	Residue	Modelled	Actual	Comment	Reference
A	610	THR	ALA	ENGINEERED	UNP Q99UY8
B	610	THR	ALA	ENGINEERED	UNP Q99UY8
C	610	THR	ALA	ENGINEERED	UNP Q99UY8
D	610	THR	ALA	ENGINEERED	UNP Q99UY8

- Molecule 2 is 5-(HEXAHYDRO-2-OXO-1H-THIENO[3,4-D]IMIDAZOL-6-YL)PENTANAL (three-letter code: BTI) (formula: C<sub>10</sub>H<sub>16</sub>N<sub>2</sub>O<sub>2</sub>S).



Mol	Chain	Residues	Atoms					ZeroOcc	AltConf
2	A	1	Total	C	N	O	S	0	0
			15	10	2	2	1		
2	B	1	Total	C	N	O	S	0	0
			15	10	2	2	1		
2	C	1	Total	C	N	O	S	0	0
			15	10	2	2	1		
2	C	1	Total	C	N	O	S	0	0
			15	10	2	2	1		

- Molecule 3 is ADENOSINE-5'-DIPHOSPHATE (three-letter code: ADP) (formula:  $C_{10}H_{15}N_5O_{10}P_2$ ).



Mol	Chain	Residues	Atoms					ZeroOcc	AltConf
3	A	1	Total	C	N	O	P	0	0
			27	10	5	10	2		
3	C	1	Total	C	N	O	P	0	0
			27	10	5	10	2		

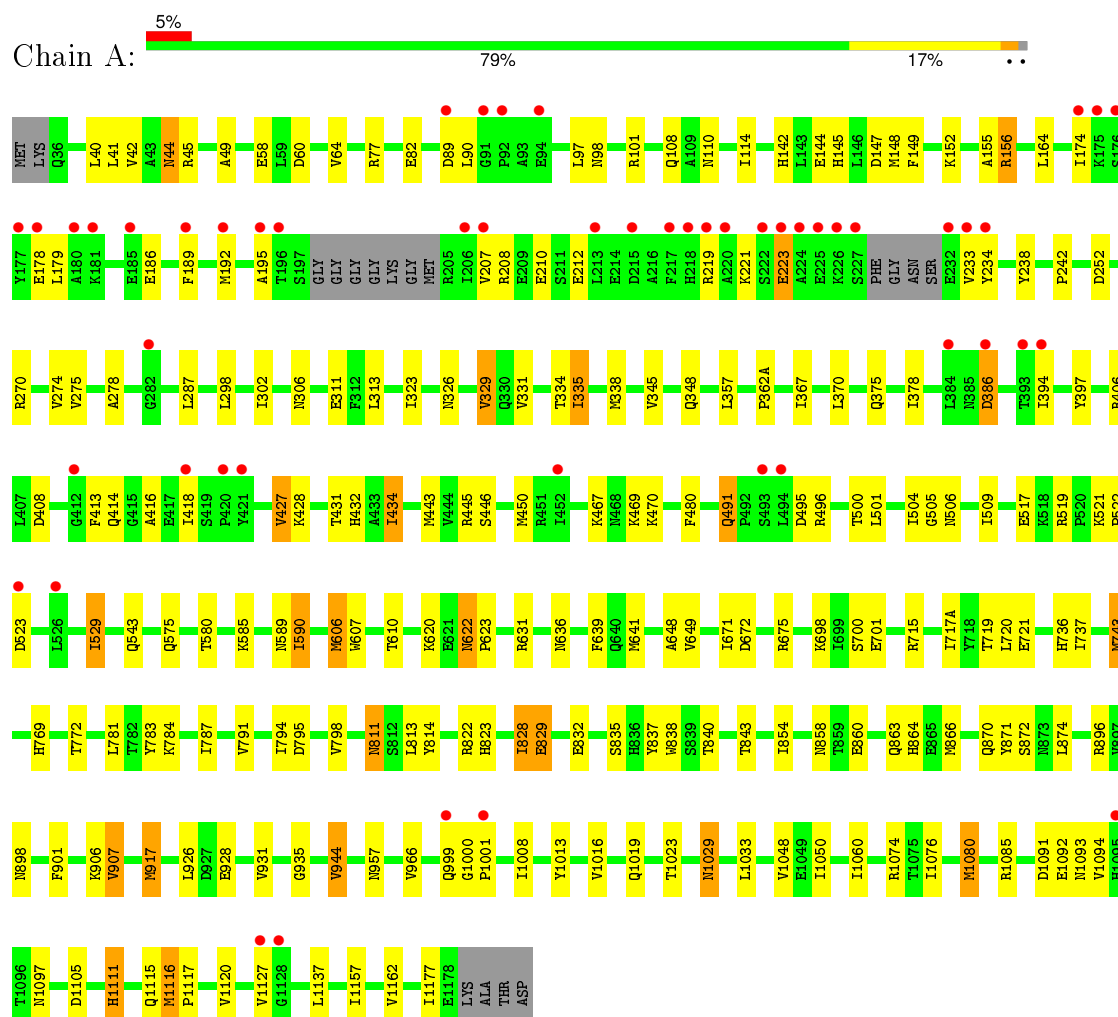
- Molecule 4 is MANGANESE (II) ION (three-letter code: MN) (formula: Mn).

Mol	Chain	Residues	Atoms		ZeroOcc	AltConf
4	B	1	Total	Mn	0	0
			1	1		
4	A	1	Total	Mn	0	0
			1	1		
4	D	1	Total	Mn	0	0
			1	1		
4	C	1	Total	Mn	0	0
			1	1		

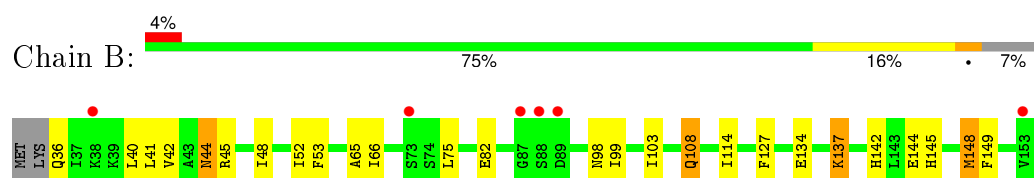
### 3 Residue-property plots

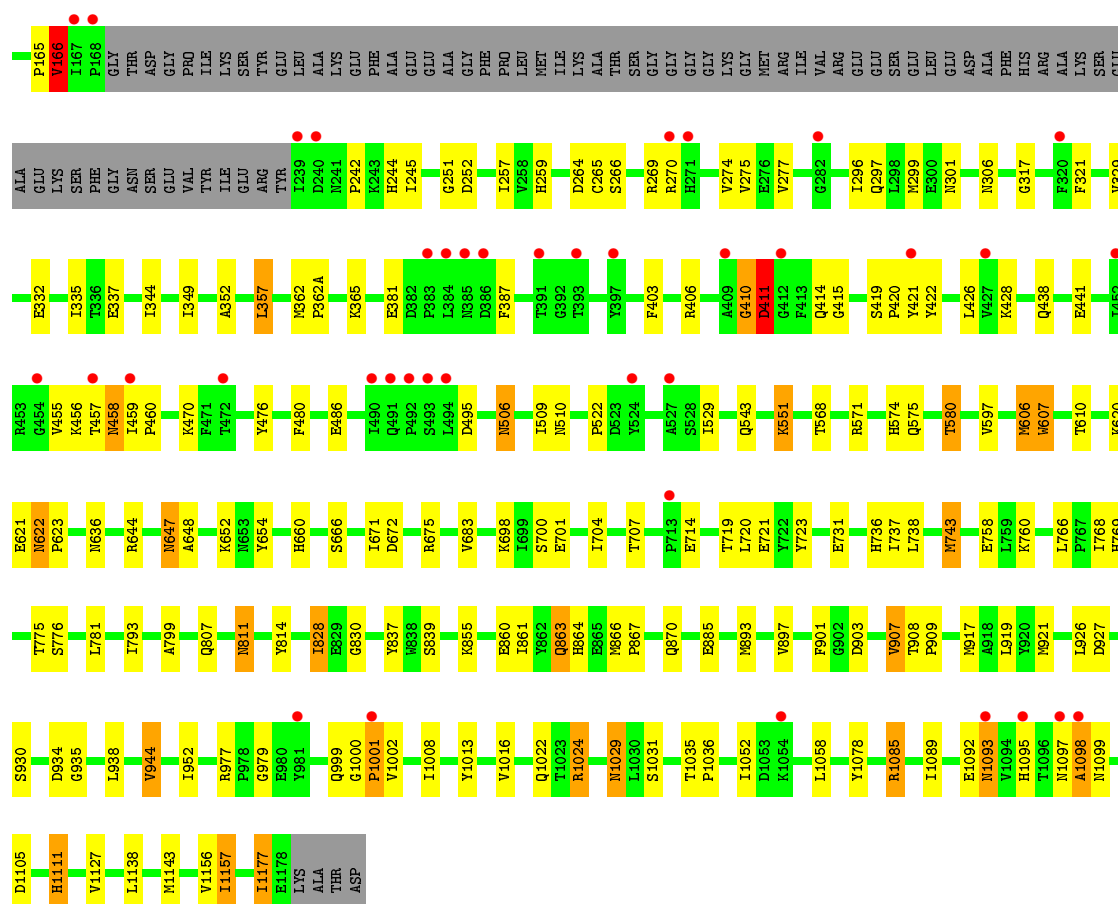
These plots are drawn for all protein, RNA and DNA chains in the entry. The first graphic for a chain summarises the proportions of errors displayed in the second graphic. The second graphic shows the sequence view annotated by issues in geometry and electron density. Residues are color-coded according to the number of geometric quality criteria for which they contain at least one outlier: green = 0, yellow = 1, orange = 2 and red = 3 or more. A red dot above a residue indicates a poor fit to the electron density ( $RSRZ > 2$ ). Stretches of 2 or more consecutive residues without any outlier are shown as a green connector. Residues present in the sample, but not in the model, are shown in grey.

#### • Molecule 1: Pyruvate carboxylase

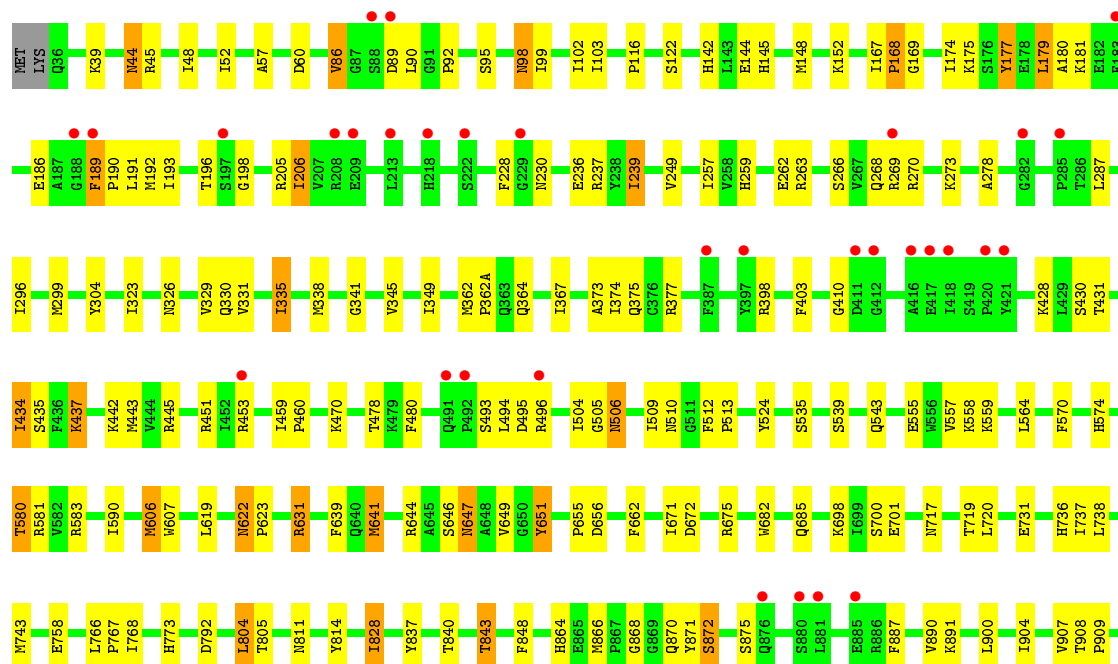
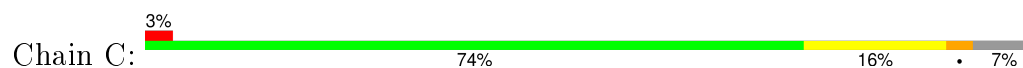


#### • Molecule 1: Pyruvate carboxylase





• Molecule 1: Pyruvate carboxylase





## 4 Data and refinement statistics

Property	Value	Source
Space group	P 1 21 1	Depositor
Cell constants a, b, c, $\alpha$ , $\beta$ , $\gamma$	96.57Å 256.76Å 126.48Å 90.00° 109.65° 90.00°	Depositor
Resolution (Å)	30.00 – 2.90 29.58 – 2.82	Depositor EDS
% Data completeness (in resolution range)	92.8 (30.00-2.90) 90.1 (29.58-2.82)	Depositor EDS
$R_{merge}$	0.07	Depositor
$R_{sym}$	(Not available)	Depositor
$\langle I/\sigma(I) \rangle$ <sup>1</sup>	1.34 (at 2.80Å)	Xtriage
Refinement program	REFMAC 5.2.0019	Depositor
R, $R_{free}$	0.220 , 0.266 0.213 , 0.256	Depositor DCC
$R_{free}$ test set	5983 reflections (5.31%)	DCC
Wilson B-factor (Å <sup>2</sup> )	51.8	Xtriage
Anisotropy	0.306	Xtriage
Bulk solvent $k_{sol}$ (e/Å <sup>3</sup> ), $B_{sol}$ (Å <sup>2</sup> )	0.30 , 30.3	EDS
Estimated twinning fraction	0.035 for h,-k,-h-l	Xtriage
L-test for twinning <sup>2</sup>	$\langle  L  \rangle = 0.46$ , $\langle L^2 \rangle = 0.29$	Xtriage
Outliers	0 of 124490 reflections	Xtriage
$F_o, F_c$ correlation	0.92	EDS
Total number of atoms	33840	wwPDB-VP
Average B, all atoms (Å <sup>2</sup> )	62.0	wwPDB-VP

Xtriage's analysis on translational NCS is as follows: *The largest off-origin peak in the Patterson function is 2.18% of the height of the origin peak. No significant pseudotranslation is detected.*

<sup>1</sup>Intensities estimated from amplitudes.

<sup>2</sup>Theoretical values of  $\langle |L| \rangle$ ,  $\langle L^2 \rangle$  for acentric reflections are 0.5, 0.375 respectively for untwinned datasets, and 0.333, 0.2 for perfectly twinned datasets.

## 5 Model quality [i](#)

### 5.1 Standard geometry [i](#)

Bond lengths and bond angles in the following residue types are not validated in this section: MN, BTI, ADP

The Z score for a bond length (or angle) is the number of standard deviations the observed value is removed from the expected value. A bond length (or angle) with  $|Z| > 5$  is considered an outlier worth inspection. RMSZ is the root-mean-square of all Z scores of the bond lengths (or angles).

Mol	Chain	Bond lengths		Bond angles	
		RMSZ	$\# Z  > 5$	RMSZ	$\# Z  > 5$
1	A	0.34	0/9110	0.50	0/12324
1	B	0.33	0/8627	0.49	0/11678
1	C	0.33	0/8605	0.49	0/11630
1	D	0.33	0/8021	0.50	0/10848
All	All	0.33	0/34363	0.49	0/46480

There are no bond length outliers.

There are no bond angle outliers.

There are no chirality outliers.

There are no planarity outliers.

### 5.2 Too-close contacts [i](#)

In the following table, the Non-H and H(model) columns list the number of non-hydrogen atoms and hydrogen atoms in the chain respectively. The H(added) column lists the number of hydrogen atoms added and optimized by MolProbity. The Clashes column lists the number of clashes within the asymmetric unit, whereas Symm-Clashes lists symmetry related clashes.

Mol	Chain	Non-H	H(model)	H(added)	Clashes	Symm-Clashes
1	A	8942	0	8872	118	0
1	B	8467	0	8413	115	0
1	C	8443	0	8352	118	0
1	D	7870	0	7808	102	0
2	A	15	0	15	1	0
2	B	15	0	15	1	0
2	C	30	0	31	1	0
3	A	27	0	12	0	0
3	C	27	0	12	0	0

*Continued on next page...*

*Continued from previous page...*

Mol	Chain	Non-H	H(model)	H(added)	Clashes	Symm-Clashes
4	A	1	0	0	0	0
4	B	1	0	0	0	0
4	C	1	0	0	0	0
4	D	1	0	0	0	0
All	All	33840	0	33530	444	0

The all-atom clashscore is defined as the number of clashes found per 1000 atoms (including hydrogen atoms). The all-atom clashscore for this structure is 7.

The worst 5 of 444 close contacts within the same asymmetric unit are listed below, sorted by their clash magnitude.

Atom-1	Atom-2	Interatomic distance (Å)	Clash overlap (Å)
1:B:1024:ARG:HH11	1:B:1024:ARG:HG3	1.13	1.14
1:D:1085:ARG:HH11	1:D:1085:ARG:HG2	1.21	1.05
1:C:44:ASN:HD22	1:C:45:ARG:H	1.00	0.99
1:B:1000:GLY:H	1:B:1001:PRO:HD3	1.28	0.94
1:C:700:SER:H	1:C:736:HIS:HD2	1.16	0.94

There are no symmetry-related clashes.

## 5.3 Torsion angles [i](#)

### 5.3.1 Protein backbone [i](#)

In the following table, the Percentiles column shows the percent Ramachandran outliers of the chain as a percentile score with respect to all X-ray entries followed by that with respect to entries of similar resolution.

The Analysed column shows the number of residues for which the backbone conformation was analysed, and the total number of residues.

Mol	Chain	Analysed	Favoured	Allowed	Outliers	Percentiles	
1	A	1127/1150 (98%)	1044 (93%)	74 (7%)	9 (1%)	24	60
1	B	1070/1150 (93%)	995 (93%)	60 (6%)	15 (1%)	14	44
1	C	1063/1150 (92%)	983 (92%)	69 (6%)	11 (1%)	19	54
1	D	987/1150 (86%)	928 (94%)	52 (5%)	7 (1%)	26	63
All	All	4247/4600 (92%)	3950 (93%)	255 (6%)	42 (1%)	19	54

5 of 42 Ramachandran outliers are listed below:

Mol	Chain	Res	Type
1	A	386	ASP
1	A	1094	VAL
1	B	522	PRO
1	B	1001	PRO
1	B	1093	ASN

### 5.3.2 Protein sidechains ⓘ

In the following table, the Percentiles column shows the percent sidechain outliers of the chain as a percentile score with respect to all X-ray entries followed by that with respect to entries of similar resolution.

The Analysed column shows the number of residues for which the sidechain conformation was analysed, and the total number of residues.

Mol	Chain	Analysed	Rotameric	Outliers	Percentiles	
1	A	978/988 (99%)	911 (93%)	67 (7%)	19	48
1	B	929/988 (94%)	863 (93%)	66 (7%)	18	47
1	C	918/988 (93%)	855 (93%)	63 (7%)	19	48
1	D	860/988 (87%)	799 (93%)	61 (7%)	18	47
All	All	3685/3952 (93%)	3428 (93%)	257 (7%)	19	47

5 of 257 residues with a non-rotameric sidechain are listed below:

Mol	Chain	Res	Type
1	B	907	VAL
1	C	186	GLU
1	D	775	THR
1	B	926	LEU
1	B	1156	VAL

Some sidechains can be flipped to improve hydrogen bonding and reduce clashes. 5 of 128 such sidechains are listed below:

Mol	Chain	Res	Type
1	B	864	HIS
1	C	44	ASN
1	D	811	ASN
1	B	877	GLN
1	B	1022	GLN

### 5.3.3 RNA ⓘ

There are no RNA molecules in this entry.

## 5.4 Non-standard residues in protein, DNA, RNA chains ⓘ

There are no non-standard protein/DNA/RNA residues in this entry.

## 5.5 Carbohydrates ⓘ

There are no carbohydrates in this entry.

## 5.6 Ligand geometry ⓘ

Of 10 ligands modelled in this entry, 4 are monoatomic - leaving 6 for Mogul analysis.

In the following table, the Counts columns list the number of bonds (or angles) for which Mogul statistics could be retrieved, the number of bonds (or angles) that are observed in the model and the number of bonds (or angles) that are defined in the chemical component dictionary. The Link column lists molecule types, if any, to which the group is linked. The Z score for a bond length (or angle) is the number of standard deviations the observed value is removed from the expected value. A bond length (or angle) with  $|Z| > 2$  is considered an outlier worth inspection. RMSZ is the root-mean-square of all Z scores of the bond lengths (or angles).

Mol	Type	Chain	Res	Link	Bond lengths			Bond angles		
					Counts	RMSZ	$\# Z  > 2$	Counts	RMSZ	$\# Z  > 2$
2	BTI	A	2000	1	14,16,16	1.92	3 (21%)	13,21,21	1.29	1 (7%)
3	ADP	A	2100	-	22,29,29	1.06	2 (9%)	27,45,45	1.93	4 (14%)
2	BTI	B	2000	1	14,16,16	1.91	3 (21%)	13,21,21	1.51	1 (7%)
2	BTI	C	1183	-	14,16,16	1.86	4 (28%)	13,21,21	1.62	1 (7%)
2	BTI	C	2000	1	14,16,16	1.88	4 (28%)	13,21,21	1.31	1 (7%)
3	ADP	C	2100	-	22,29,29	1.07	2 (9%)	27,45,45	2.00	5 (18%)

In the following table, the Chirals column lists the number of chiral outliers, the number of chiral centers analysed, the number of these observed in the model and the number defined in the chemical component dictionary. Similar counts are reported in the Torsion and Rings columns. '-' means no outliers of that kind were identified.

Mol	Type	Chain	Res	Link	Chirals	Torsions	Rings
2	BTI	A	2000	1	-	0/5/27/27	0/2/2/2
3	ADP	A	2100	-	-	0/12/32/32	0/3/3/3
2	BTI	B	2000	1	-	0/5/27/27	0/2/2/2

*Continued on next page...*

*Continued from previous page...*

Mol	Type	Chain	Res	Link	Chirals	Torsions	Rings
2	BTI	C	1183	-	-	0/5/27/27	0/2/2/2
2	BTI	C	2000	1	-	0/5/27/27	0/2/2/2
3	ADP	C	2100	-	-	0/12/32/32	0/3/3/3

The worst 5 of 18 bond length outliers are listed below:

Mol	Chain	Res	Type	Atoms	Z	Observed(Å)	Ideal(Å)
2	B	2000	BTI	C2-S1	-3.74	1.76	1.82
2	C	2000	BTI	C2-S1	-3.58	1.76	1.82
2	A	2000	BTI	C2-S1	-3.55	1.76	1.82
2	C	1183	BTI	C2-S1	-3.39	1.77	1.82
2	A	2000	BTI	C3-N2	-2.17	1.32	1.35

The worst 5 of 13 bond angle outliers are listed below:

Mol	Chain	Res	Type	Atoms	Z	Observed(°)	Ideal(°)
3	A	2100	ADP	N3-C2-N1	-7.07	123.48	128.89
3	C	2100	ADP	N3-C2-N1	-7.04	123.50	128.89
3	C	2100	ADP	C2'-C1'-N9	-4.35	107.64	114.29
3	A	2100	ADP	C2'-C1'-N9	-3.34	109.19	114.29
3	C	2100	ADP	PA-O3A-PB	-3.33	121.51	132.67

There are no chirality outliers.

There are no torsion outliers.

There are no ring outliers.

3 monomers are involved in 3 short contacts:

Mol	Chain	Res	Type	Clashes	Symm-Clashes
2	A	2000	BTI	1	0
2	B	2000	BTI	1	0
2	C	2000	BTI	1	0

## 5.7 Other polymers [i](#)

There are no such residues in this entry.

## 5.8 Polymer linkage issues [i](#)

There are no chain breaks in this entry.

## 6 Fit of model and data [i](#)

### 6.1 Protein, DNA and RNA chains [i](#)

In the following table, the column labelled ‘#RSRZ> 2’ contains the number (and percentage) of RSRZ outliers, followed by percent RSRZ outliers for the chain as percentile scores relative to all X-ray entries and entries of similar resolution. The OWAB column contains the minimum, median, 95<sup>th</sup> percentile and maximum values of the occupancy-weighted average B-factor per residue. The column labelled ‘Q< 0.9’ lists the number of (and percentage) of residues with an average occupancy less than 0.9.

Mol	Chain	Analysed	<RSRZ>	#RSRZ>2	OWAB(Å <sup>2</sup> )	Q<0.9
1	A	1133/1150 (98%)	-0.09	52 (4%) 36 30	19, 45, 109, 169	0
1	B	1074/1150 (93%)	0.09	46 (4%) 39 32	29, 60, 127, 178	0
1	C	1067/1150 (92%)	-0.01	39 (3%) 45 38	29, 61, 102, 147	0
1	D	993/1150 (86%)	-0.09	32 (3%) 51 43	17, 44, 138, 192	0
All	All	4267/4600 (92%)	-0.02	169 (3%) 42 35	17, 55, 121, 192	0

The worst 5 of 169 RSRZ outliers are listed below:

Mol	Chain	Res	Type	RSRZ
1	B	492	PRO	9.3
1	B	240	ASP	6.7
1	D	490	ILE	6.5
1	D	494	LEU	5.8
1	C	421	TYR	5.5

### 6.2 Non-standard residues in protein, DNA, RNA chains [i](#)

There are no non-standard protein/DNA/RNA residues in this entry.

### 6.3 Carbohydrates [i](#)

There are no carbohydrates in this entry.

### 6.4 Ligands [i](#)

In the following table, the Atoms column lists the number of modelled atoms in the group and the number defined in the chemical component dictionary. LLDF column lists the quality of electron density of the group with respect to its neighbouring residues in protein, DNA or RNA chains. The B-factors column lists the minimum, median, 95<sup>th</sup> percentile and maximum values of B factors

of atoms in the group. The column labelled 'Q< 0.9' lists the number of atoms with occupancy less than 0.9.

Mol	Type	Chain	Res	Atoms	RSCC	RSR	LLDF	B-factors( $\text{\AA}^2$ )	Q<0.9
4	MN	D	2002	1/1	0.97	0.19	0.53	57,57,57,57	0
2	BTI	C	2000	15/15	0.95	0.17	0.37	45,45,57,57	0
2	BTI	A	2000	15/15	0.96	0.15	0.15	50,51,53,53	0
2	BTI	C	1183	15/15	0.95	0.16	0.10	48,48,49,49	0
2	BTI	B	2000	15/15	0.95	0.15	-0.06	48,48,51,51	0
3	ADP	A	2100	27/27	0.88	0.20	-0.59	99,100,103,103	0
3	ADP	C	2100	27/27	0.93	0.17	-0.65	78,78,78,79	0
4	MN	B	2002	1/1	0.94	0.14	-0.82	77,77,77,77	0
4	MN	A	2002	1/1	0.91	0.13	-1.27	63,63,63,63	0
4	MN	C	2002	1/1	0.94	0.11	-1.85	75,75,75,75	0

## 6.5 Other polymers [i](#)

There are no such residues in this entry.