



Full wwPDB X-ray Structure Validation Report ⓘ

Feb 1, 2016 – 05:11 PM GMT

PDB ID : 4HGT
Title : Crystal structure of ck1d with compound 13
Authors : Huang, X.
Deposited on : 2012-10-08
Resolution : 1.80 Å(reported)

This is a Full wwPDB X-ray Structure Validation Report for a publicly released PDB entry.
We welcome your comments at validation@mail.wwpdb.org
A user guide is available at
<http://wwpdb.org/validation/2016/XrayValidationReportHelp>
with specific help available everywhere you see the ⓘ symbol.

The following versions of software and data (see [references ⓘ](#)) were used in the production of this report:

MolProbity : 4.02b-467
Mogul : 1.7 (RC4), CSD as536be (2015)
Xtriage (Phenix) : 1.9-1692
EDS : rb-20026688
Percentile statistics : 20151230.v01 (using entries in the PDB archive December 30th 2015)
Refmac : 5.8.0135
CCP4 : 6.5.0
Ideal geometry (proteins) : Engh & Huber (2001)
Ideal geometry (DNA, RNA) : Parkinson et al. (1996)
Validation Pipeline (wwPDB-VP) : trunk26865

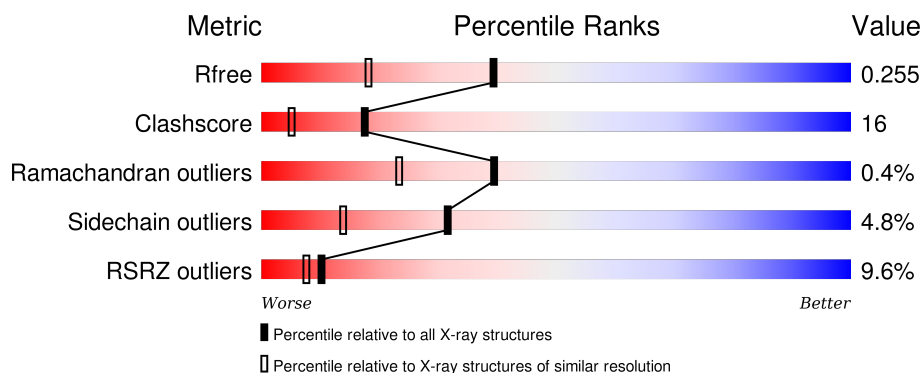
1 Overall quality at a glance

The following experimental techniques were used to determine the structure:

X-RAY DIFFRACTION

The reported resolution of this entry is 1.80 Å.

Percentile scores (ranging between 0-100) for global validation metrics of the entry are shown in the following graphic. The table shows the number of entries on which the scores are based.



Metric	Whole archive (#Entries)	Similar resolution (#Entries, resolution range(Å))
R_{free}	91344	4533 (1.80-1.80)
Clashscore	102246	5383 (1.80-1.80)
Ramachandran outliers	100387	5320 (1.80-1.80)
Sidechain outliers	100360	5319 (1.80-1.80)
RSRZ outliers	91569	4547 (1.80-1.80)

The table below summarises the geometric issues observed across the polymeric chains and their fit to the electron density. The red, orange, yellow and green segments on the lower bar indicate the fraction of residues that contain outliers for ≥ 3 , 2, 1 and 0 types of geometric quality criteria. A grey segment represents the fraction of residues that are not modelled. The numeric value for each fraction is indicated below the corresponding segment, with a dot representing fractions $\leq 5\%$. The upper red bar (where present) indicates the fraction of residues that have poor fit to the electron density. The numeric value is given above the bar.

Mol	Chain	Length	Quality of chain
1	A	296	<div> <div>9%</div> <div>73%</div> <div>21%</div> <div>• •</div> </div>
1	B	296	<div> <div>9%</div> <div>70%</div> <div>22%</div> <div>• 5%</div> </div>

2 Entry composition [i](#)

There are 3 unique types of molecules in this entry. The entry contains 5160 atoms, of which 0 are hydrogens and 0 are deuteriums.

In the tables below, the ZeroOcc column contains the number of atoms modelled with zero occupancy, the AltConf column contains the number of residues with at least one atom in alternate conformation and the Trace column contains the number of residues modelled with at most 2 atoms.

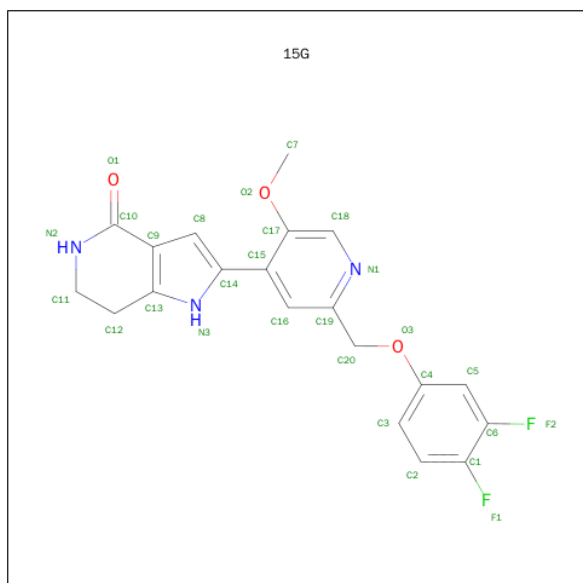
- Molecule 1 is a protein called Casein kinase I isoform delta.

Mol	Chain	Residues	Atoms					ZeroOcc	AltConf	Trace
1	A	283	Total	C	N	O	S	0	0	0
			2267	1458	386	409	14			
1	B	280	Total	C	N	O	S	0	0	0
			2284	1464	400	406	14			

There are 4 discrepancies between the modelled and reference sequences:

Chain	Residue	Modelled	Actual	Comment	Reference
A	-1	GLY	-	EXPRESSION TAG	UNP P48730
A	0	SER	-	EXPRESSION TAG	UNP P48730
B	-1	GLY	-	EXPRESSION TAG	UNP P48730
B	0	SER	-	EXPRESSION TAG	UNP P48730

- Molecule 2 is 2-{2-[(3,4-DIFLUOROPHENOXY)METHYL]-5-METHOXPYRIDIN-4-YL}-1,5,6,7-TETRAHYDRO-4H-PYRROLO[3,2-C]PYRIDIN-4-ONE (three-letter code: 15G) (formula: C₂₀H₁₇F₂N₃O₃).



Mol	Chain	Residues	Atoms					ZeroOcc	AltConf
2	A	1	Total	C	F	N	O	0	0
			28	20	2	3	3		
2	B	1	Total	C	F	N	O	0	0
			28	20	2	3	3		

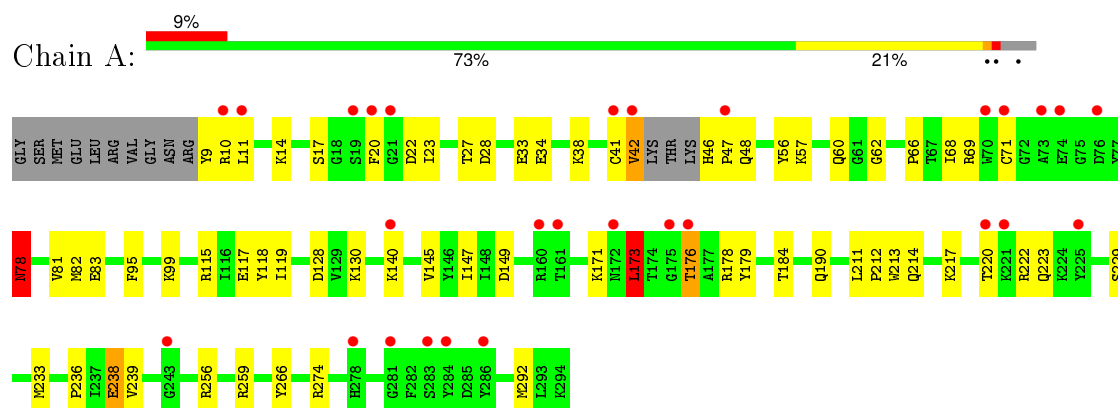
- Molecule 3 is water.

Mol	Chain	Residues	Atoms		ZeroOcc	AltConf
3	A	263	Total	O	0	0
			263	263		
3	B	290	Total	O	0	0
			290	290		

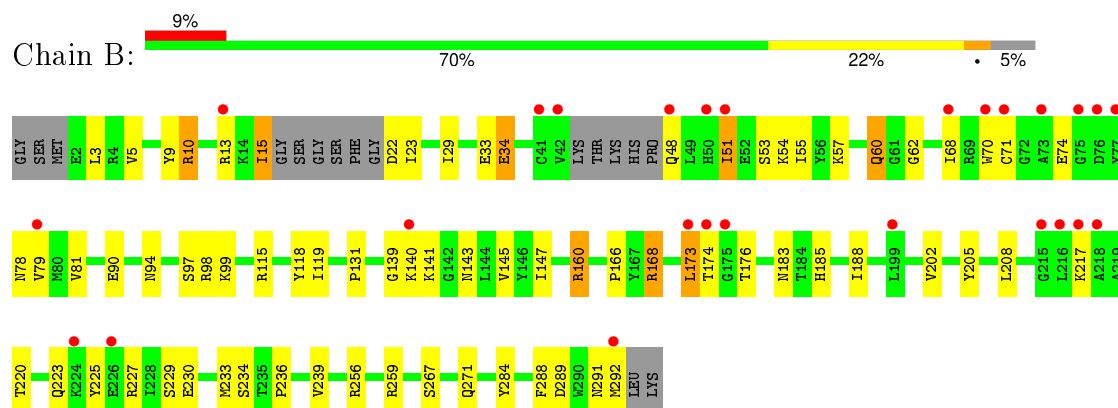
3 Residue-property plots [i](#)

These plots are drawn for all protein, RNA and DNA chains in the entry. The first graphic for a chain summarises the proportions of errors displayed in the second graphic. The second graphic shows the sequence view annotated by issues in geometry and electron density. Residues are color-coded according to the number of geometric quality criteria for which they contain at least one outlier: green = 0, yellow = 1, orange = 2 and red = 3 or more. A red dot above a residue indicates a poor fit to the electron density ($RSRZ > 2$). Stretches of 2 or more consecutive residues without any outlier are shown as a green connector. Residues present in the sample, but not in the model, are shown in grey.

- Molecule 1: Casein kinase I isoform delta



- Molecule 1: Casein kinase I isoform delta



4 Data and refinement statistics

Property	Value	Source
Space group	P 1 21 1	Depositor
Cell constants a, b, c, α , β , γ	49.17Å 72.97Å 89.33Å 90.00° 103.63° 90.00°	Depositor
Resolution (Å)	30.00 – 1.80 29.00 – 1.80	Depositor EDS
% Data completeness (in resolution range)	(Not available) (30.00-1.80) 93.2 (29.00-1.80)	Depositor EDS
R_{merge}	0.03	Depositor
R_{sym}	(Not available)	Depositor
$\langle I/\sigma(I) \rangle$ ¹	6.24 (at 1.79Å)	Xtriage
Refinement program	CNS	Depositor
R, R_{free}	0.240 , (Not available) 0.221 , 0.255	Depositor DCC
R_{free} test set	2699 reflections (5.35%)	DCC
Wilson B-factor (Å ²)	22.7	Xtriage
Anisotropy	0.267	Xtriage
Bulk solvent k_{sol} (e/Å ³), B_{sol} (Å ²)	0.34 , 57.4	EDS
Estimated twinning fraction	0.023 for h,-k,-h-l	Xtriage
L-test for twinning ²	$\langle L \rangle = 0.50$, $\langle L^2 \rangle = 0.33$	Xtriage
Outliers	0 of 53228 reflections	Xtriage
F_o, F_c correlation	0.94	EDS
Total number of atoms	5160	wwPDB-VP
Average B, all atoms (Å ²)	22.0	wwPDB-VP

Xtriage's analysis on translational NCS is as follows: *The largest off-origin peak in the Patterson function is 7.23% of the height of the origin peak. No significant pseudotranslation is detected.*

¹Intensities estimated from amplitudes.

²Theoretical values of $\langle |L| \rangle$, $\langle L^2 \rangle$ for acentric reflections are 0.5, 0.375 respectively for untwinned datasets, and 0.333, 0.2 for perfectly twinned datasets.

5 Model quality [i](#)

5.1 Standard geometry [i](#)

Bond lengths and bond angles in the following residue types are not validated in this section: 15G

The Z score for a bond length (or angle) is the number of standard deviations the observed value is removed from the expected value. A bond length (or angle) with $|Z| > 5$ is considered an outlier worth inspection. RMSZ is the root-mean-square of all Z scores of the bond lengths (or angles).

Mol	Chain	Bond lengths		Bond angles	
		RMSZ	$\# Z > 5$	RMSZ	$\# Z > 5$
1	A	0.42	0/2319	0.75	4/3123 (0.1%)
1	B	0.46	0/2333	0.76	3/3135 (0.1%)
All	All	0.44	0/4652	0.75	7/6258 (0.1%)

There are no bond length outliers.

All (7) bond angle outliers are listed below:

Mol	Chain	Res	Type	Atoms	Z	Observed(°)	Ideal(°)
1	A	173	LEU	CA-CB-CG	7.49	132.54	115.30
1	B	10	ARG	NE-CZ-NH2	-5.95	117.32	120.30
1	A	78	ASN	N-CA-C	-5.76	95.45	111.00
1	A	274	ARG	NE-CZ-NH1	5.53	123.06	120.30
1	B	259	ARG	NE-CZ-NH1	-5.52	117.54	120.30
1	B	3	LEU	CA-CB-CG	5.29	127.47	115.30
1	A	28	ASP	N-CA-C	-5.11	97.19	111.00

There are no chirality outliers.

There are no planarity outliers.

5.2 Too-close contacts [i](#)

In the following table, the Non-H and H(model) columns list the number of non-hydrogen atoms and hydrogen atoms in the chain respectively. The H(added) column lists the number of hydrogen atoms added and optimized by MolProbity. The Clashes column lists the number of clashes within the asymmetric unit, whereas Symm-Clashes lists symmetry related clashes.

Mol	Chain	Non-H	H(model)	H(added)	Clashes	Symm-Clashes
1	A	2267	0	2227	65	0
1	B	2284	0	2274	86	0

Continued on next page...

Continued from previous page...

Mol	Chain	Non-H	H(model)	H(added)	Clashes	Symm-Clashes
2	A	28	0	17	1	0
2	B	28	0	17	1	0
3	A	263	0	0	17	0
3	B	290	0	0	15	0
All	All	5160	0	4535	146	0

The all-atom clashscore is defined as the number of clashes found per 1000 atoms (including hydrogen atoms). The all-atom clashscore for this structure is 16.

All (146) close contacts within the same asymmetric unit are listed below, sorted by their clash magnitude.

Atom-1	Atom-2	Interatomic distance (Å)	Clash overlap (Å)
1:B:60:GLN:HE22	1:B:68:ILE:HG13	1.15	1.11
1:B:71:CYS:HB3	3:B:676:HOH:O	1.52	1.09
1:A:130:LYS:HD3	1:A:176:THR:HG21	1.31	1.06
1:B:168:ARG:HG3	1:B:168:ARG:HH11	1.22	1.00
1:B:54:LYS:NZ	1:B:57:LYS:HD3	1.74	1.00
1:B:68:ILE:O	1:B:68:ILE:HD12	1.65	0.95
1:B:54:LYS:HZ1	1:B:57:LYS:HD3	1.26	0.93
1:A:33:GLU:OE1	1:A:69:ARG:NH2	2.00	0.93
1:A:83:GLU:HG2	3:A:447:HOH:O	1.73	0.87
1:A:23:ILE:N	1:A:23:ILE:HD12	1.98	0.79
1:A:140:LYS:HG2	3:A:640:HOH:O	1.82	0.79
1:A:173:LEU:HD13	1:A:184:THR:HG22	1.64	0.78
1:B:60:GLN:NE2	1:B:68:ILE:HG13	1.98	0.76
1:B:168:ARG:NH1	1:B:168:ARG:HG3	1.99	0.75
1:B:10:ARG:NH2	3:B:566:HOH:O	2.14	0.74
1:A:292:MET:HE1	3:A:647:HOH:O	1.87	0.74
1:A:173:LEU:HD13	1:A:184:THR:CG2	2.17	0.74
1:B:289:ASP:HA	1:B:292:MET:HE3	1.68	0.74
1:A:10:ARG:NH2	1:B:13:ARG:CZ	2.51	0.72
1:B:119:ILE:HD11	1:B:147:ILE:HD13	1.73	0.70
1:B:57:LYS:HG2	1:B:68:ILE:HD11	1.73	0.70
1:A:130:LYS:HD3	1:A:176:THR:CG2	2.18	0.70
1:B:168:ARG:CG	1:B:168:ARG:HH11	2.04	0.69
1:A:68:ILE:HG21	1:A:71:CYS:SG	2.32	0.69
1:A:46:HIS:N	1:A:47:PRO:HD2	2.08	0.69
1:B:60:GLN:HE22	1:B:68:ILE:CG1	1.99	0.68
1:B:48:GLN:HA	3:B:545:HOH:O	1.91	0.68
1:B:289:ASP:HA	1:B:292:MET:CE	2.23	0.68
1:B:143:ASN:OD1	3:B:599:HOH:O	2.12	0.68

Continued on next page...

Continued from previous page...

Atom-1	Atom-2	Interatomic distance (Å)	Clash overlap (Å)
1:A:66:PRO:HB3	3:A:447:HOH:O	1.95	0.67
1:A:238:GLU:HG3	3:A:516:HOH:O	1.94	0.67
1:A:259:ARG:HG3	1:A:259:ARG:HH11	1.59	0.67
1:B:70:TRP:HE3	1:B:81:VAL:HG23	1.60	0.66
1:A:236:PRO:HG2	1:A:239:VAL:CG2	2.26	0.66
1:A:46:HIS:N	1:A:47:PRO:CD	2.60	0.65
1:A:10:ARG:HH22	1:B:13:ARG:NE	1.95	0.64
1:B:70:TRP:CZ3	1:B:79:VAL:HB	2.34	0.63
1:B:208:LEU:HD21	3:B:520:HOH:O	1.99	0.63
1:B:13:ARG:NE	1:B:15:ILE:HG22	2.14	0.62
1:B:51:ILE:HD11	3:B:617:HOH:O	2.01	0.61
1:A:57:LYS:HE2	3:A:500:HOH:O	1.98	0.61
1:B:51:ILE:HD12	1:B:51:ILE:O	2.01	0.61
1:B:288:PHE:O	1:B:291:ASN:HB2	2.01	0.61
1:B:256:ARG:NH1	3:B:430:HOH:O	2.30	0.60
1:A:140:LYS:HD2	1:A:140:LYS:N	2.16	0.60
1:B:217:LYS:N	1:B:227:ARG:NH1	2.48	0.60
1:B:54:LYS:HZ2	1:B:57:LYS:HD3	1.63	0.60
1:B:160:ARG:HG2	1:B:160:ARG:NH1	2.17	0.60
1:B:68:ILE:O	1:B:68:ILE:CD1	2.47	0.59
1:A:71:CYS:HB3	3:A:487:HOH:O	2.01	0.59
1:A:10:ARG:HH22	1:B:13:ARG:CZ	2.16	0.58
1:B:60:GLN:NE2	1:B:68:ILE:H	2.01	0.58
1:B:119:ILE:CD1	1:B:147:ILE:HD13	2.32	0.58
1:A:66:PRO:CB	3:A:447:HOH:O	2.52	0.57
1:A:23:ILE:CD1	1:A:23:ILE:N	2.67	0.57
1:A:68:ILE:HD12	1:A:82:MET:HG2	1.85	0.57
1:A:140:LYS:HD2	1:A:140:LYS:H	1.68	0.56
1:B:183:ASN:HD22	1:B:188:ILE:HD12	1.71	0.56
1:A:130:LYS:CD	1:A:176:THR:HG21	2.22	0.56
1:A:176:THR:HG23	3:A:470:HOH:O	2.06	0.55
1:B:271:GLN:NE2	3:B:584:HOH:O	2.36	0.55
1:B:291:ASN:OD1	3:B:599:HOH:O	2.17	0.55
1:B:51:ILE:O	1:B:55:ILE:HG13	2.07	0.55
3:A:568:HOH:O	1:B:34:GLU:HG2	2.07	0.55
1:B:60:GLN:HE22	1:B:68:ILE:H	1.54	0.54
1:A:9:TYR:HA	1:A:27:THR:O	2.07	0.54
1:A:20:PHE:CE1	1:A:48:GLN:HG3	2.41	0.54
1:A:95:PHE:CD2	1:B:29:ILE:HD13	2.43	0.53
1:B:267:SER:O	1:B:271:GLN:HG2	2.09	0.53
1:A:259:ARG:HG3	1:A:259:ARG:NH1	2.24	0.53

Continued on next page...

Continued from previous page...

Atom-1	Atom-2	Interatomic distance (Å)	Clash overlap (Å)
1:B:5:VAL:CG2	1:B:9:TYR:HB2	2.39	0.53
1:B:168:ARG:NH1	1:B:168:ARG:CG	2.67	0.52
1:A:217:LYS:NZ	3:A:455:HOH:O	2.26	0.52
1:A:140:LYS:CD	1:A:140:LYS:H	2.22	0.52
1:B:98:ARG:NH2	1:B:205:TYR:OH	2.42	0.52
1:B:183:ASN:ND2	1:B:188:ILE:HD12	2.25	0.51
1:B:97:SER:HB3	1:B:99:LYS:HE2	1.92	0.51
1:A:236:PRO:HG2	1:A:239:VAL:HG23	1.93	0.50
1:B:5:VAL:HG23	1:B:9:TYR:HB2	1.93	0.50
1:B:94:ASN:OD1	1:B:98:ARG:NH1	2.43	0.50
1:B:217:LYS:H	1:B:227:ARG:HH12	1.58	0.49
1:A:14:LYS:HE3	1:A:22:ASP:OD1	2.11	0.49
1:B:70:TRP:HZ3	1:B:79:VAL:HG11	1.76	0.49
1:A:117:GLU:HG3	1:A:266:TYR:CD2	2.48	0.49
1:B:173:LEU:HD22	1:B:225:TYR:CD2	2.48	0.49
1:B:174:THR:O	1:B:174:THR:HG22	2.12	0.49
1:A:128:ASP:OD1	1:A:176:THR:HG22	2.13	0.49
1:B:160:ARG:HG2	1:B:160:ARG:HH11	1.76	0.49
1:A:229:SER:O	1:A:233:MET:HG3	2.13	0.49
1:B:70:TRP:HE3	1:B:81:VAL:CG2	2.26	0.49
1:A:190:GLN:NE2	3:A:509:HOH:O	2.46	0.48
1:A:140:LYS:CD	1:A:140:LYS:N	2.77	0.47
1:A:292:MET:CE	3:A:647:HOH:O	2.56	0.47
1:A:115:ARG:NE	1:A:145:VAL:O	2.43	0.47
1:B:51:ILE:HG23	3:B:534:HOH:O	2.14	0.47
1:B:54:LYS:HE3	3:B:530:HOH:O	2.13	0.47
1:A:60:GLN:HG3	1:A:60:GLN:O	2.12	0.47
1:A:83:GLU:CG	3:A:447:HOH:O	2.45	0.47
1:A:9:TYR:CE1	1:A:81:VAL:HG11	2.49	0.47
1:A:220:THR:OG1	1:A:223:GLN:N	2.48	0.47
1:B:173:LEU:HD13	1:B:225:TYR:CD1	2.50	0.46
1:A:217:LYS:HB3	3:A:513:HOH:O	2.15	0.46
1:B:48:GLN:CB	3:B:534:HOH:O	2.63	0.45
2:B:301:15G:H7	3:B:560:HOH:O	2.15	0.45
1:B:90:GLU:HB2	1:B:131:PRO:HB2	1.99	0.45
1:B:236:PRO:HG2	1:B:239:VAL:CG2	2.46	0.45
1:A:212:PRO:HG2	1:A:213:TRP:CE3	2.51	0.45
1:B:62:GLY:HA3	1:B:118:TYR:CZ	2.52	0.45
1:B:70:TRP:HZ3	1:B:79:VAL:CG1	2.29	0.45
1:B:217:LYS:H	1:B:227:ARG:NH1	2.14	0.44
1:A:56:TYR:CE1	1:A:66:PRO:HG2	2.53	0.44

Continued on next page...

Continued from previous page...

Atom-1	Atom-2	Interatomic distance (Å)	Clash overlap (Å)
1:A:10:ARG:HE	1:A:10:ARG:HB3	1.50	0.44
1:B:160:ARG:CG	1:B:160:ARG:HH11	2.31	0.44
1:B:57:LYS:HE3	1:B:68:ILE:HD13	2.00	0.44
1:A:10:ARG:CZ	1:B:13:ARG:CZ	2.96	0.43
1:B:185:HIS:ND1	1:B:229:SER:HB2	2.33	0.43
1:A:178:ARG:HD2	1:A:179:TYR:CZ	2.53	0.43
1:B:139:GLY:C	1:B:141:LYS:H	2.21	0.43
1:B:220:THR:H	1:B:223:GLN:HE21	1.65	0.43
1:A:42:VAL:O	1:A:42:VAL:HG13	2.18	0.43
1:B:236:PRO:HG2	1:B:239:VAL:HG23	2.00	0.43
1:A:176:THR:O	3:A:470:HOH:O	2.21	0.43
1:B:284:TYR:HD2	3:B:587:HOH:O	2.02	0.43
1:B:230:GLU:O	1:B:234:SER:HB3	2.19	0.42
1:A:78:ASN:HD22	1:A:78:ASN:HA	1.62	0.42
1:A:68:ILE:N	1:A:68:ILE:HD13	2.34	0.42
1:A:211:LEU:N	1:A:214:GLN:OE1	2.44	0.42
1:B:54:LYS:CE	1:B:54:LYS:HA	2.50	0.42
1:B:74:GLU:HA	1:B:74:GLU:OE1	2.19	0.42
1:A:236:PRO:HG2	1:A:239:VAL:HG21	2.02	0.42
1:B:48:GLN:CA	3:B:545:HOH:O	2.59	0.42
1:B:115:ARG:NE	1:B:145:VAL:O	2.39	0.42
1:A:62:GLY:HA3	1:A:118:TYR:CZ	2.54	0.42
1:B:78:ASN:HD22	1:B:78:ASN:HA	1.78	0.42
1:A:119:ILE:HD11	1:A:147:ILE:HG21	2.02	0.41
1:B:166:PRO:HB2	1:B:168:ARG:NH1	2.36	0.41
1:A:10:ARG:NH2	1:B:13:ARG:NE	2.63	0.41
1:B:22:ASP:C	1:B:23:ILE:HG13	2.40	0.41
1:B:70:TRP:HH2	1:B:74:GLU:HG2	1.86	0.41
1:A:117:GLU:HG3	1:A:266:TYR:CE2	2.56	0.41
1:B:70:TRP:CZ3	1:B:79:VAL:CG1	3.04	0.41
1:B:202:VAL:O	1:B:205:TYR:HB3	2.21	0.41
1:B:97:SER:O	1:B:99:LYS:HG3	2.21	0.40
1:B:229:SER:OG	1:B:233:MET:CE	2.69	0.40
1:A:38:LYS:HE3	2:A:301:15G:O1	2.21	0.40
1:A:217:LYS:HE3	3:A:543:HOH:O	2.20	0.40

There are no symmetry-related clashes.

5.3 Torsion angles

5.3.1 Protein backbone

In the following table, the Percentiles column shows the percent Ramachandran outliers of the chain as a percentile score with respect to all X-ray entries followed by that with respect to entries of similar resolution.

The Analysed column shows the number of residues for which the backbone conformation was analysed, and the total number of residues.

Mol	Chain	Analysed	Favoured	Allowed	Outliers	Percentiles	
1	A	279/296 (94%)	268 (96%)	9 (3%)	2 (1%)	26	11
1	B	274/296 (93%)	267 (97%)	7 (3%)	0	100	100
All	All	553/592 (93%)	535 (97%)	16 (3%)	2 (0%)	39	23

All (2) Ramachandran outliers are listed below:

Mol	Chain	Res	Type
1	A	149	ASP
1	A	222	ARG

5.3.2 Protein sidechains

In the following table, the Percentiles column shows the percent sidechain outliers of the chain as a percentile score with respect to all X-ray entries followed by that with respect to entries of similar resolution.

The Analysed column shows the number of residues for which the sidechain conformation was analysed, and the total number of residues.

Mol	Chain	Analysed	Rotameric	Outliers	Percentiles	
1	A	239/259 (92%)	227 (95%)	12 (5%)	30	13
1	B	243/259 (94%)	232 (96%)	11 (4%)	34	16
All	All	482/518 (93%)	459 (95%)	23 (5%)	31	14

All (23) residues with a non-rotameric sidechain are listed below:

Mol	Chain	Res	Type
1	A	11	LEU
1	A	17	SER
1	A	34	GLU
1	A	41	CYS

Continued on next page...

Continued from previous page...

Mol	Chain	Res	Type
1	A	42	VAL
1	A	78	ASN
1	A	99	LYS
1	A	171	LYS
1	A	173	LEU
1	A	176	THR
1	A	238	GLU
1	A	256	ARG
1	B	15	ILE
1	B	33	GLU
1	B	34	GLU
1	B	51	ILE
1	B	53	SER
1	B	60	GLN
1	B	140	LYS
1	B	160	ARG
1	B	168	ARG
1	B	173	LEU
1	B	176	THR

Some sidechains can be flipped to improve hydrogen bonding and reduce clashes. All (8) such sidechains are listed below:

Mol	Chain	Res	Type
1	A	78	ASN
1	A	190	GLN
1	A	278	HIS
1	B	60	GLN
1	B	183	ASN
1	B	190	GLN
1	B	223	GLN
1	B	291	ASN

5.3.3 RNA ⓘ

There are no RNA molecules in this entry.

5.4 Non-standard residues in protein, DNA, RNA chains ⓘ

There are no non-standard protein/DNA/RNA residues in this entry.

5.5 Carbohydrates [i](#)

There are no carbohydrates in this entry.

5.6 Ligand geometry [i](#)

2 ligands are modelled in this entry.

In the following table, the Counts columns list the number of bonds (or angles) for which Mogul statistics could be retrieved, the number of bonds (or angles) that are observed in the model and the number of bonds (or angles) that are defined in the chemical component dictionary. The Link column lists molecule types, if any, to which the group is linked. The Z score for a bond length (or angle) is the number of standard deviations the observed value is removed from the expected value. A bond length (or angle) with $|Z| > 2$ is considered an outlier worth inspection. RMSZ is the root-mean-square of all Z scores of the bond lengths (or angles).

Mol	Type	Chain	Res	Link	Bond lengths			Bond angles		
					Counts	RMSZ	$\# Z > 2$	Counts	RMSZ	$\# Z > 2$
2	15G	A	301	-	29,31,31	2.27	9 (31%)	34,44,44	2.01	12 (35%)
2	15G	B	301	-	29,31,31	2.37	12 (41%)	34,44,44	2.11	14 (41%)

In the following table, the Chirals column lists the number of chiral outliers, the number of chiral centers analysed, the number of these observed in the model and the number defined in the chemical component dictionary. Similar counts are reported in the Torsion and Rings columns. '-' means no outliers of that kind were identified.

Mol	Type	Chain	Res	Link	Chirals	Torsions	Rings
2	15G	A	301	-	-	0/10/21/21	0/4/4/4
2	15G	B	301	-	-	0/10/21/21	0/4/4/4

All (21) bond length outliers are listed below:

Mol	Chain	Res	Type	Atoms	Z	Observed(Å)	Ideal(Å)
2	A	301	15G	C9-C10	-4.79	1.39	1.47
2	B	301	15G	C9-C10	-4.39	1.40	1.47
2	B	301	15G	F2-C6	-2.13	1.30	1.35
2	A	301	15G	O2-C17	2.21	1.40	1.37
2	B	301	15G	C16-C19	2.59	1.43	1.38
2	B	301	15G	C10-N2	2.61	1.37	1.34
2	B	301	15G	C5-C4	2.63	1.43	1.38
2	B	301	15G	C2-C1	2.88	1.44	1.38
2	B	301	15G	O2-C17	2.97	1.41	1.37
2	A	301	15G	C3-C2	2.99	1.44	1.38
2	A	301	15G	C2-C1	3.04	1.44	1.38

Continued on next page...

Continued from previous page...

Mol	Chain	Res	Type	Atoms	Z	Observed(Å)	Ideal(Å)
2	B	301	15G	C16-C15	3.21	1.44	1.39
2	A	301	15G	C16-C19	3.25	1.44	1.38
2	B	301	15G	C3-C2	3.27	1.44	1.38
2	A	301	15G	C16-C15	3.73	1.45	1.39
2	A	301	15G	C3-C4	3.76	1.46	1.38
2	B	301	15G	C15-C17	4.05	1.47	1.40
2	A	301	15G	C15-C17	4.34	1.47	1.40
2	B	301	15G	C3-C4	4.46	1.47	1.38
2	A	301	15G	C18-C17	5.31	1.46	1.38
2	B	301	15G	C18-C17	5.36	1.46	1.38

All (26) bond angle outliers are listed below:

Mol	Chain	Res	Type	Atoms	Z	Observed(°)	Ideal(°)
2	B	301	15G	C3-C2-C1	-4.21	114.41	119.00
2	A	301	15G	C3-C2-C1	-3.95	114.70	119.00
2	A	301	15G	C9-C8-C14	-3.52	103.58	105.98
2	B	301	15G	C17-C18-N1	-3.28	117.07	122.72
2	A	301	15G	C17-C18-N1	-3.23	117.16	122.72
2	A	301	15G	C11-C12-C13	-2.97	108.02	113.15
2	A	301	15G	C8-C14-C15	-2.73	125.59	129.40
2	A	301	15G	O3-C4-C5	-2.48	107.86	119.81
2	B	301	15G	C11-C12-C13	-2.47	108.88	113.15
2	B	301	15G	F1-C1-C6	-2.34	112.14	118.51
2	B	301	15G	O3-C4-C5	-2.17	109.37	119.81
2	B	301	15G	C15-C14-N3	2.21	123.64	120.62
2	A	301	15G	C18-C17-C15	2.23	122.35	118.99
2	B	301	15G	C3-C4-C5	2.23	123.70	120.56
2	A	301	15G	C3-C4-C5	2.27	123.75	120.56
2	A	301	15G	C17-C15-C14	2.30	126.15	123.45
2	B	301	15G	C7-O2-C17	2.39	121.17	117.54
2	B	301	15G	F1-C1-C2	2.49	124.13	118.47
2	A	301	15G	C12-C11-N2	2.73	112.93	109.69
2	B	301	15G	C18-C17-C15	2.79	123.19	118.99
2	B	301	15G	C5-C6-C1	2.92	123.78	121.13
2	A	301	15G	C7-O2-C17	3.08	122.22	117.54
2	B	301	15G	C8-C9-C13	3.18	108.31	104.10
2	B	301	15G	C17-C15-C14	3.34	127.36	123.45
2	A	301	15G	C8-C9-C13	3.56	108.82	104.10
2	B	301	15G	C12-C11-N2	5.47	116.17	109.69

There are no chirality outliers.

There are no torsion outliers.

There are no ring outliers.

2 monomers are involved in 2 short contacts:

Mol	Chain	Res	Type	Clashes	Symm-Clashes
2	A	301	15G	1	0
2	B	301	15G	1	0

5.7 Other polymers [i](#)

There are no such residues in this entry.

5.8 Polymer linkage issues [i](#)

There are no chain breaks in this entry.

6 Fit of model and data ⓘ

6.1 Protein, DNA and RNA chains ⓘ

In the following table, the column labelled ‘#RSRZ> 2’ contains the number (and percentage) of RSRZ outliers, followed by percent RSRZ outliers for the chain as percentile scores relative to all X-ray entries and entries of similar resolution. The OWAB column contains the minimum, median, 95th percentile and maximum values of the occupancy-weighted average B-factor per residue. The column labelled ‘Q< 0.9’ lists the number of (and percentage) of residues with an average occupancy less than 0.9.

Mol	Chain	Analysed	<RSRZ>	#RSRZ>2	OWAB(Å ²)	Q<0.9
1	A	283/296 (95%)	0.61	28 (9%) 9 7	10, 20, 37, 44	1 (0%)
1	B	280/296 (94%)	0.56	26 (9%) 11 8	10, 19, 38, 44	0
All	All	563/592 (95%)	0.58	54 (9%) 10 7	10, 20, 37, 44	1 (0%)

All (54) RSRZ outliers are listed below:

Mol	Chain	Res	Type	RSRZ
1	B	215	GLY	6.6
1	A	220	THR	5.7
1	B	216	LEU	5.4
1	B	41	CYS	5.3
1	A	20	PHE	5.1
1	A	284	TYR	4.7
1	A	286	TYR	4.6
1	B	71	CYS	4.6
1	B	292	MET	4.3
1	A	278	HIS	4.2
1	B	70	TRP	4.2
1	B	174	THR	4.1
1	B	77	TYR	4.1
1	B	217	LYS	3.8
1	B	42	VAL	3.8
1	A	10	ARG	3.8
1	B	218	ALA	3.7
1	B	173	LEU	3.7
1	A	176	THR	3.6
1	B	73	ALA	3.5
1	A	221	LYS	3.5
1	A	42	VAL	3.5
1	A	41	CYS	3.4
1	B	75	GLY	3.3

Continued on next page...

Continued from previous page...

Mol	Chain	Res	Type	RSRZ
1	A	73	ALA	3.2
1	A	19	SER	3.2
1	B	224	LYS	3.1
1	B	48	GLN	3.1
1	A	160	ARG	3.0
1	A	71	CYS	3.0
1	A	11	LEU	3.0
1	B	175	GLY	2.9
1	A	76	ASP	2.9
1	A	225	TYR	2.9
1	B	140	LYS	2.9
1	B	68	ILE	2.8
1	A	243	GLY	2.7
1	B	76	ASP	2.6
1	B	199	LEU	2.6
1	B	79	VAL	2.6
1	A	161	THR	2.5
1	A	74	GLU	2.4
1	A	175	GLY	2.4
1	B	226	GLU	2.4
1	A	140	LYS	2.3
1	A	70	TRP	2.3
1	A	21	GLY	2.3
1	B	51	ILE	2.2
1	A	281	GLY	2.2
1	B	13	ARG	2.1
1	B	50	HIS	2.1
1	A	47	PRO	2.0
1	A	283	SER	2.0
1	A	172	ASN	2.0

6.2 Non-standard residues in protein, DNA, RNA chains ⓘ

There are no non-standard protein/DNA/RNA residues in this entry.

6.3 Carbohydrates ⓘ

There are no carbohydrates in this entry.

6.4 Ligands [i](#)

In the following table, the Atoms column lists the number of modelled atoms in the group and the number defined in the chemical component dictionary. LLDF column lists the quality of electron density of the group with respect to its neighbouring residues in protein, DNA or RNA chains. The B-factors column lists the minimum, median, 95th percentile and maximum values of B factors of atoms in the group. The column labelled 'Q< 0.9' lists the number of atoms with occupancy less than 0.9.

Mol	Type	Chain	Res	Atoms	RSCC	RSR	LLDF	B-factors(\AA^2)	Q<0.9
2	15G	B	301	28/28	0.86	0.12	-0.20	18,20,30,31	0
2	15G	A	301	28/28	0.92	0.09	-1.00	14,16,26,28	0

6.5 Other polymers [i](#)

There are no such residues in this entry.