



# Full wwPDB X-ray Structure Validation Report ⓘ

Jan 31, 2016 – 07:50 PM GMT

PDB ID : 1HJ4  
Title : CYTOCHROME CD1 NITRITE REDUCTASE, X-RAY REDUCED DIOXY-  
GEN COMPLEX  
Authors : Sjogren, T.; Hajdu, J.  
Deposited on : 2001-01-08  
Resolution : 1.60 Å(reported)

This is a Full wwPDB X-ray Structure Validation Report for a publicly released PDB entry.  
We welcome your comments at [validation@mail.wwpdb.org](mailto:validation@mail.wwpdb.org)  
A user guide is available at  
<http://wwpdb.org/validation/2016/XrayValidationReportHelp>  
with specific help available everywhere you see the ⓘ symbol.

---

The following versions of software and data (see [references ⓘ](#)) were used in the production of this report:

MolProbity : 4.02b-467  
Mogul : 1.7 (RC4), CSD as536be (2015)  
Xtriage (Phenix) : **NOT EXECUTED**  
EDS : **NOT EXECUTED**  
Percentile statistics : 20151230.v01 (using entries in the PDB archive December 30th 2015)  
Ideal geometry (proteins) : Engh & Huber (2001)  
Ideal geometry (DNA, RNA) : Parkinson et al. (1996)  
Validation Pipeline (wwPDB-VP) : trunk26865

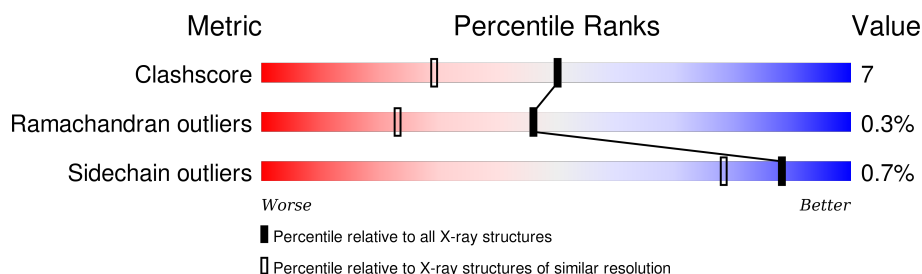
# 1 Overall quality at a glance

The following experimental techniques were used to determine the structure:

*X-RAY DIFFRACTION*

The reported resolution of this entry is 1.60 Å.

Percentile scores (ranging between 0-100) for global validation metrics of the entry are shown in the following graphic. The table shows the number of entries on which the scores are based.



Metric	Whole archive (#Entries)	Similar resolution (#Entries, resolution range(Å))
Clashscore	102246	2732 (1.60-1.60)
Ramachandran outliers	100387	2654 (1.60-1.60)
Sidechain outliers	100360	2653 (1.60-1.60)

The table below summarises the geometric issues observed across the polymeric chains and their fit to the electron density. The red, orange, yellow and green segments on the lower bar indicate the fraction of residues that contain outliers for  $\geq 3$ , 2, 1 and 0 types of geometric quality criteria. A grey segment represents the fraction of residues that are not modelled. The numeric value for each fraction is indicated below the corresponding segment, with a dot representing fractions  $\leq 5\%$ . The upper red bar (where present) indicates the fraction of residues that have poor fit to the electron density. The numeric value is given above the bar.

Note EDS was not executed.

Mol	Chain	Length	Quality of chain
1	A	567	
1	B	567	

The following table lists non-polymeric compounds, carbohydrate monomers and non-standard residues in protein, DNA, RNA chains that are outliers for geometric or electron-density-fit criteria:

Mol	Type	Chain	Res	Chirality	Geometry	Clashes	Electron density
4	GOL	A	611	-	-	X	-
4	GOL	A	612	-	-	X	-

## 2 Entry composition [i](#)

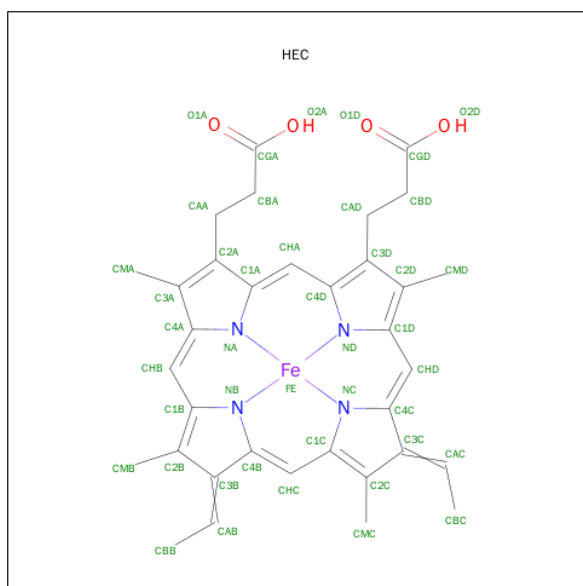
There are 6 unique types of molecules in this entry. The entry contains 9597 atoms, of which 0 are hydrogens and 0 are deuteriums.

In the tables below, the ZeroOcc column contains the number of atoms modelled with zero occupancy, the AltConf column contains the number of residues with at least one atom in alternate conformation and the Trace column contains the number of residues modelled with at most 2 atoms.

- Molecule 1 is a protein called NITRITE REDUCTASE.

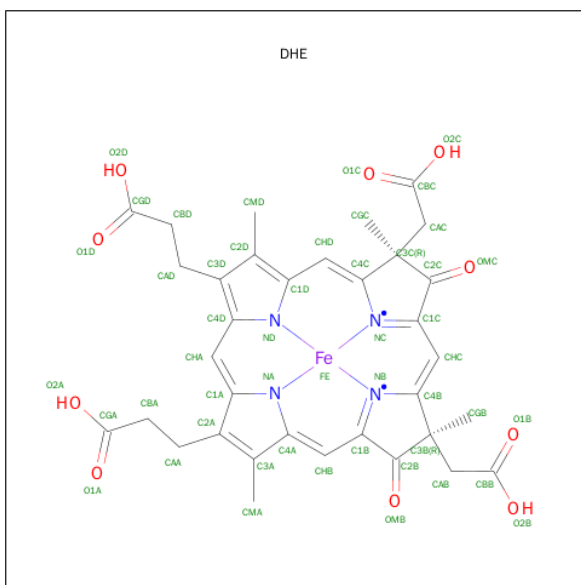
Mol	Chain	Residues	Atoms					ZeroOcc	AltConf	Trace
1	A	551	Total	C	N	O	S	0	0	0
			4290	2710	720	846	14			
1	B	542	Total	C	N	O	S	0	0	0
			4207	2661	701	831	14			

- Molecule 2 is HEME C (three-letter code: HEC) (formula:  $C_{34}H_{34}FeN_4O_4$ ).



Mol	Chain	Residues	Atoms					ZeroOcc	AltConf
2	A	1	Total	C	Fe	N	O	0	0
			43	34	1	4	4		
2	B	1	Total	C	Fe	N	O	0	0
			43	34	1	4	4		

- Molecule 3 is HEME D (three-letter code: DHE) (formula:  $C_{34}H_{32}FeN_4O_{10}$ ).



Mol	Chain	Residues	Atoms					ZeroOcc	AltConf
3	A	1	Total 49	C 34	Fe 1	N 4	O 10	0	0
3	B	1	Total 49	C 34	Fe 1	N 4	O 10	0	0

- Molecule 4 is GLYCEROL (three-letter code: GOL) (formula:  $\text{C}_3\text{H}_8\text{O}_3$ ).



Mol	Chain	Residues	Atoms	ZeroOcc	AltConf
4	A	1	Total C O 6 3 3	0	0
4	A	1	Total C O 6 3 3	0	0

- Molecule 5 is SULFATE ION (three-letter code: SO4) (formula: O<sub>4</sub>S).



Mol	Chain	Residues	Atoms			ZeroOcc	AltConf
5	A	1	Total	O	S	0	0
			5	4	1		
5	B	1	Total	O	S	0	0
			5	4	1		
5	B	1	Total	O	S	0	0
			5	4	1		

- Molecule 6 is water.

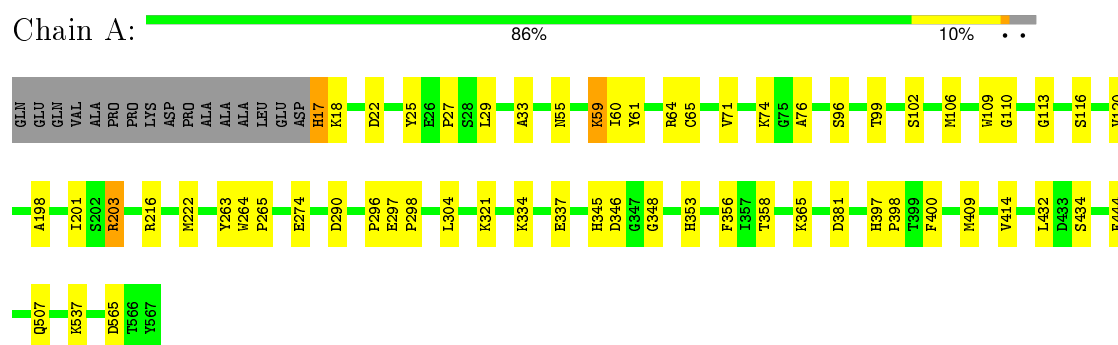
Mol	Chain	Residues	Atoms		ZeroOcc	AltConf
6	A	447	Total	O	0	0
			447	447		
6	B	442	Total	O	0	0
			442	442		

### 3 Residue-property plots

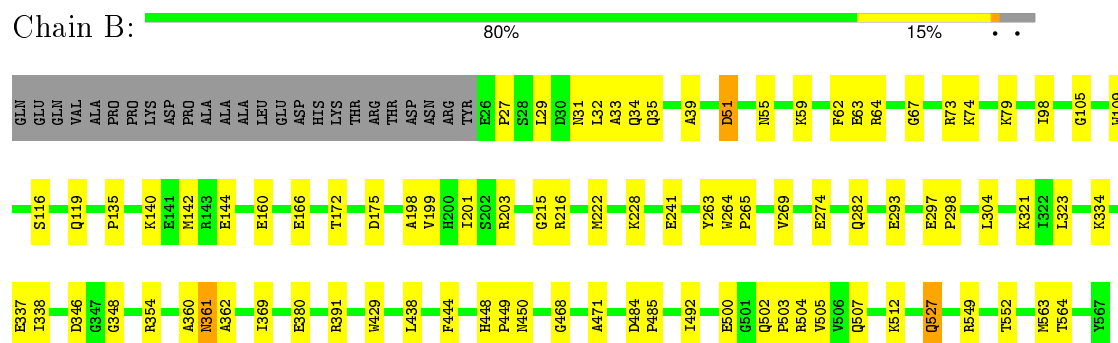
These plots are drawn for all protein, RNA and DNA chains in the entry. The first graphic for a chain summarises the proportions of errors displayed in the second graphic. The second graphic shows the sequence view annotated by issues in geometry and electron density. Residues are color-coded according to the number of geometric quality criteria for which they contain at least one outlier: green = 0, yellow = 1, orange = 2 and red = 3 or more. A red dot above a residue indicates a poor fit to the electron density ( $\text{RSRZ} > 2$ ). Stretches of 2 or more consecutive residues without any outlier are shown as a green connector. Residues present in the sample, but not in the model, are shown in grey.

Note EDS was not executed.

#### • Molecule 1: NITRITE REDUCTASE



#### • Molecule 1: NITRITE REDUCTASE



## 4 Data and refinement statistics

Xtriage (Phenix) and EDS were not executed - this section will therefore be incomplete.

Property	Value	Source
Space group	P 1 21 1	Depositor
Cell constants a, b, c, $\alpha$ , $\beta$ , $\gamma$	106.69 Å   60.90 Å   100.59 Å 90.00°   112.08°   90.00°	Depositor
Resolution (Å)	30.00 – 1.60	Depositor
% Data completeness (in resolution range)	93.9 (30.00-1.60)	Depositor
$R_{merge}$	0.04	Depositor
$R_{sym}$	0.04	Depositor
Refinement program	REFMAC	Depositor
R, $R_{free}$	0.202 , 0.226	Depositor
Estimated twinning fraction	No twinning to report.	Xtriage
Total number of atoms	9597	wwPDB-VP
Average B, all atoms (Å <sup>2</sup> )	22.0	wwPDB-VP

## 5 Model quality

### 5.1 Standard geometry

Bond lengths and bond angles in the following residue types are not validated in this section: GOL, DHE, SO4, HEC

The Z score for a bond length (or angle) is the number of standard deviations the observed value is removed from the expected value. A bond length (or angle) with  $|Z| > 5$  is considered an outlier worth inspection. RMSZ is the root-mean-square of all Z scores of the bond lengths (or angles).

Mol	Chain	Bond lengths		Bond angles	
		RMSZ	$\# Z  > 5$	RMSZ	$\# Z  > 5$
1	A	0.64	0/4395	0.84	4/5978 (0.1%)
1	B	0.62	0/4310	0.82	6/5864 (0.1%)
All	All	0.63	0/8705	0.83	10/11842 (0.1%)

Chiral center outliers are detected by calculating the chiral volume of a chiral center and verifying if the center is modelled as a planar moiety or with the opposite hand. A planarity outlier is detected by checking planarity of atoms in a peptide group, atoms in a mainchain group or atoms of a sidechain that are expected to be planar.

Mol	Chain	#Chirality outliers	#Planarity outliers
1	B	0	2

There are no bond length outliers.

All (10) bond angle outliers are listed below:

Mol	Chain	Res	Type	Atoms	Z	Observed( $^{\circ}$ )	Ideal( $^{\circ}$ )
1	B	391	ARG	NE-CZ-NH2	-7.36	116.62	120.30
1	A	203	ARG	CD-NE-CZ	6.96	133.34	123.60
1	A	203	ARG	NE-CZ-NH2	6.84	123.72	120.30
1	B	73	ARG	NE-CZ-NH1	6.11	123.36	120.30
1	B	354	ARG	NE-CZ-NH1	5.75	123.17	120.30
1	A	290	ASP	CB-CG-OD1	5.32	123.09	118.30
1	B	549	ARG	NE-CZ-NH1	5.24	122.92	120.30
1	B	346	ASP	CB-CG-OD1	5.20	122.98	118.30
1	A	346	ASP	CB-CG-OD1	5.18	122.96	118.30
1	B	354	ARG	NE-CZ-NH2	-5.11	117.75	120.30

There are no chirality outliers.

All (2) planarity outliers are listed below:



Mol	Chain	Res	Type	Group
1	B	360	ALA	Mainchain
1	B	503	PRO	Mainchain

## 5.2 Too-close contacts ⓘ

In the following table, the Non-H and H(model) columns list the number of non-hydrogen atoms and hydrogen atoms in the chain respectively. The H(added) column lists the number of hydrogen atoms added and optimized by MolProbity. The Clashes column lists the number of clashes within the asymmetric unit, whereas Symm-Clashes lists symmetry related clashes.

Mol	Chain	Non-H	H(model)	H(added)	Clashes	Symm-Clashes
1	A	4290	0	4130	44	0
1	B	4207	0	4052	62	0
2	A	43	0	30	3	0
2	B	43	0	30	6	0
3	A	49	0	26	5	0
3	B	49	0	26	3	0
4	A	12	0	15	10	0
5	A	5	0	0	0	0
5	B	10	0	0	0	0
6	A	447	0	0	6	0
6	B	442	0	0	5	0
All	All	9597	0	8309	119	0

The all-atom clashscore is defined as the number of clashes found per 1000 atoms (including hydrogen atoms). The all-atom clashscore for this structure is 7.

All (119) close contacts within the same asymmetric unit are listed below, sorted by their clash magnitude.

Atom-1	Atom-2	Interatomic distance (Å)	Clash overlap (Å)
4:A:612:GOL:C2	4:A:612:GOL:C1	1.85	1.51
4:A:611:GOL:C2	4:A:611:GOL:C1	1.88	1.51
1:B:502:GLN:HE21	1:B:504:ARG:HD3	1.26	0.98
4:A:611:GOL:C1	4:A:611:GOL:C3	2.53	0.86
4:A:612:GOL:C3	4:A:612:GOL:C1	2.56	0.82
1:B:502:GLN:NE2	1:B:504:ARG:HD3	1.95	0.81
1:B:502:GLN:HE21	1:B:504:ARG:CD	1.97	0.78
1:B:35:GLN:HE22	1:B:135:PRO:HG3	1.49	0.77
1:A:18:LYS:HE2	1:A:18:LYS:HA	1.71	0.72
1:B:361:ASN:HD22	1:B:362:ALA:H	1.37	0.72
1:B:361:ASN:HD22	1:B:362:ALA:N	1.91	0.68

*Continued on next page...*

*Continued from previous page...*

Atom-1	Atom-2	Interatomic distance (Å)	Clash overlap (Å)
1:A:102:SER:HB3	2:A:601:HEC:HBB2	1.75	0.68
1:A:25:TYR:HB2	1:A:409:MET:HE1	1.78	0.66
1:A:60:ILE:HG23	1:A:64:ARG:HH11	1.59	0.66
1:A:537:LYS:HG2	6:A:2414:HOH:O	1.97	0.64
1:B:29:LEU:HD22	1:B:241:GLU:HG3	1.78	0.64
1:B:502:GLN:HG2	1:B:504:ARG:HG3	1.80	0.63
1:B:33:ALA:HB2	1:B:62:PHE:HB2	1.81	0.63
4:A:611:GOL:C1	4:A:611:GOL:H31	2.27	0.63
1:B:79:LYS:HG3	2:B:601:HEC:HAD2	1.80	0.63
4:A:611:GOL:C2	4:A:611:GOL:O1	2.48	0.61
4:A:612:GOL:C1	4:A:612:GOL:H31	2.32	0.60
1:A:201:ILE:HD12	1:A:203:ARG:HG2	1.84	0.60
1:B:175:ASP:OD2	1:B:552:THR:HG21	2.02	0.59
4:A:611:GOL:C1	4:A:611:GOL:O2	2.47	0.59
1:B:201:ILE:HD13	3:B:602:DHE:O2A	2.03	0.58
1:B:444:PHE:CE1	3:B:602:DHE:HBD1	2.39	0.58
1:A:353:HIS:HE1	1:A:565:ASP:O	1.87	0.58
1:B:323:LEU:HD22	1:B:337:GLU:HG2	1.86	0.57
3:A:602:DHE:HBD2	3:A:602:DHE:HMD1	1.87	0.57
1:B:172:THR:HG23	1:B:199:VAL:CG2	2.35	0.56
1:B:31:ASN:O	1:B:34:GLN:HG2	2.06	0.55
1:A:444:PHE:CE1	3:A:602:DHE:HBD1	2.41	0.55
3:B:602:DHE:HMD1	3:B:602:DHE:HBD2	1.89	0.55
1:B:502:GLN:HE21	1:B:504:ARG:CG	2.19	0.55
1:B:321:LYS:NZ	6:B:2222:HOH:O	2.39	0.55
1:A:17:HIS:NE2	2:A:601:HEC:NB	2.55	0.55
1:B:222:MET:HE1	1:B:274:GLU:HA	1.88	0.55
1:A:74:LYS:HG3	1:A:296:PRO:CG	2.36	0.55
1:A:96:SER:O	1:A:99:THR:HG22	2.07	0.54
1:B:64:ARG:O	2:B:601:HEC:HMC3	2.07	0.54
1:A:297:GLU:N	1:A:298:PRO:HD3	2.22	0.54
1:B:33:ALA:CB	1:B:63:GLU:HG3	2.38	0.54
1:B:172:THR:HG23	1:B:199:VAL:HG22	1.89	0.52
1:B:297:GLU:N	1:B:298:PRO:HD3	2.25	0.52
1:B:32:LEU:HD23	1:B:32:LEU:O	2.10	0.52
1:B:116:SER:H	1:B:119:GLN:HE21	1.58	0.52
1:A:25:TYR:HE2	1:A:345:HIS:HE2	1.58	0.51
1:A:74:LYS:HG3	1:A:296:PRO:HG3	1.92	0.51
1:B:35:GLN:HE22	1:B:135:PRO:CG	2.23	0.51
1:B:438:LEU:HG	1:B:471:ALA:HB2	1.93	0.51
1:A:102:SER:CB	2:A:601:HEC:HBB2	2.40	0.50

*Continued on next page...*

*Continued from previous page...*

Atom-1	Atom-2	Interatomic distance (Å)	Clash overlap (Å)
1:A:201:ILE:HD13	3:A:602:DHE:O2A	2.10	0.50
1:B:39:ALA:HB2	1:B:51:ASP:HA	1.92	0.50
1:A:106:MET:O	1:A:110:GLY:N	2.41	0.49
1:A:334:LYS:HE2	6:A:2242:HOH:O	2.12	0.49
1:B:27:PRO:O	1:B:67:GLY:HA3	2.12	0.49
1:B:380:GLU:HG3	1:B:429:TRP:O	2.12	0.49
1:A:76:ALA:HB1	6:A:2233:HOH:O	2.12	0.48
1:B:109:TRP:CE2	2:B:601:HEC:HBB2	2.47	0.48
1:B:140:LYS:O	1:B:144:GLU:HG3	2.13	0.48
4:A:612:GOL:C1	4:A:612:GOL:O2	2.54	0.48
1:A:304:LEU:HD21	1:A:348:GLY:HA2	1.96	0.48
1:B:105:GLY:O	2:B:601:HEC:HBC2	2.14	0.48
1:B:116:SER:H	1:B:119:GLN:NE2	2.11	0.48
1:A:321:LYS:NZ	6:A:2235:HOH:O	2.46	0.47
1:A:29:LEU:HD22	1:A:71:VAL:CG1	2.44	0.47
1:A:222:MET:HE1	1:A:274:GLU:HA	1.97	0.47
1:B:304:LEU:HD21	1:B:348:GLY:HA2	1.95	0.47
1:B:27:PRO:HB3	1:B:263:TYR:HE2	1.80	0.47
1:B:142:MET:CE	1:B:269:VAL:HG21	2.45	0.46
1:B:468:GLY:HA2	1:B:505:VAL:HG23	1.98	0.46
1:B:35:GLN:NE2	1:B:135:PRO:HG3	2.23	0.46
1:B:527:GLN:HE21	1:B:527:GLN:HA	1.81	0.46
1:B:166:GLU:HB3	1:B:512:LYS:HD2	1.98	0.46
1:B:160:GLU:O	1:B:228:LYS:HD3	2.16	0.45
1:A:106:MET:HE2	3:A:602:DHE:OMC	2.17	0.45
1:B:448:HIS:CG	1:B:449:PRO:HD2	2.52	0.45
1:A:116:SER:O	1:A:120:VAL:HG23	2.17	0.44
1:B:142:MET:HE2	1:B:269:VAL:HG21	2.00	0.44
1:A:33:ALA:O	1:A:59:LYS:HE2	2.17	0.44
1:B:502:GLN:NE2	6:B:2376:HOH:O	2.49	0.44
2:B:601:HEC:HBD2	2:B:601:HEC:HHA	2.00	0.44
1:A:321:LYS:HD3	1:A:337:GLU:CG	2.48	0.44
1:A:264:TRP:HA	1:A:265:PRO:C	2.37	0.43
1:B:563:MET:HG3	1:B:564:THR:HG23	1.99	0.43
4:A:612:GOL:C2	4:A:612:GOL:O1	2.52	0.43
1:B:199:VAL:HA	1:B:215:GLY:HA2	1.99	0.43
1:A:22:ASP:HA	1:A:409:MET:HE2	1.99	0.43
1:A:102:SER:O	1:A:113:GLY:HA3	2.19	0.43
1:B:201:ILE:HD12	1:B:203:ARG:HG2	2.00	0.43
1:A:33:ALA:O	1:A:59:LYS:HG3	2.19	0.43
1:A:29:LEU:N	1:A:29:LEU:HD12	2.34	0.43

*Continued on next page...*

*Continued from previous page...*

Atom-1	Atom-2	Interatomic distance (Å)	Clash overlap (Å)
1:B:484:ASP:HA	1:B:485:PRO:HD3	1.93	0.42
1:B:264:TRP:HA	1:B:265:PRO:C	2.38	0.42
1:B:198:ALA:HB3	1:B:216:ARG:CD	2.49	0.42
1:B:450:ASN:HB3	6:B:2384:HOH:O	2.19	0.42
6:A:2235:HOH:O	1:B:282:GLN:NE2	2.53	0.42
1:A:198:ALA:HB3	1:A:216:ARG:HD2	2.01	0.42
1:B:492:ILE:HB	1:B:505:VAL:HG21	2.01	0.42
1:A:25:TYR:CD2	3:A:602:DHE:HGB2	2.55	0.41
1:B:293:GLU:HG3	6:B:2056:HOH:O	2.19	0.41
1:B:198:ALA:O	1:B:216:ARG:HG3	2.20	0.41
1:A:356:PHE:CZ	1:A:358:THR:HB	2.55	0.41
1:A:27:PRO:HB3	1:A:263:TYR:CE2	2.54	0.41
1:B:33:ALA:HB3	1:B:63:GLU:HG3	2.02	0.41
1:A:397:HIS:HA	1:A:398:PRO:HD3	1.95	0.41
1:A:400:PHE:HB3	1:A:432:LEU:HD13	2.02	0.41
1:A:274:GLU:HG3	6:A:2187:HOH:O	2.19	0.41
1:A:59:LYS:HE3	1:A:59:LYS:N	2.34	0.41
1:B:98:ILE:CD1	2:B:601:HEC:HMB2	2.50	0.41
1:B:334:LYS:HE3	6:B:2238:HOH:O	2.21	0.41
1:A:365:LYS:NZ	1:A:381:ASP:HB2	2.36	0.41
1:A:55:ASN:O	1:A:59:LYS:HD2	2.21	0.41
1:A:414:VAL:O	1:A:434:SER:HA	2.20	0.41
1:B:338:ILE:HG21	1:B:369:ILE:HD12	2.03	0.40
1:A:61:TYR:O	1:A:65:CYS:HB2	2.22	0.40
1:B:500:GLU:CD	1:B:527:GLN:HE22	2.24	0.40
1:B:55:ASN:O	1:B:59:LYS:HG3	2.21	0.40

There are no symmetry-related clashes.

## 5.3 Torsion angles ⓘ

### 5.3.1 Protein backbone ⓘ

In the following table, the Percentiles column shows the percent Ramachandran outliers of the chain as a percentile score with respect to all X-ray entries followed by that with respect to entries of similar resolution.

The Analysed column shows the number of residues for which the backbone conformation was analysed, and the total number of residues.

Mol	Chain	Analysed	Favoured	Allowed	Outliers	Percentiles	
1	A	549/567 (97%)	522 (95%)	25 (5%)	2 (0%)	39	17
1	B	540/567 (95%)	515 (95%)	24 (4%)	1 (0%)	52	28
All	All	1089/1134 (96%)	1037 (95%)	49 (4%)	3 (0%)	46	23

All (3) Ramachandran outliers are listed below:

Mol	Chain	Res	Type
1	A	507	GLN
1	B	507	GLN
1	A	109	TRP

### 5.3.2 Protein sidechains ⓘ

In the following table, the Percentiles column shows the percent sidechain outliers of the chain as a percentile score with respect to all X-ray entries followed by that with respect to entries of similar resolution.

The Analysed column shows the number of residues for which the sidechain conformation was analysed, and the total number of residues.

Mol	Chain	Analysed	Rotameric	Outliers	Percentiles	
1	A	457/469 (97%)	455 (100%)	2 (0%)	93	88
1	B	448/469 (96%)	444 (99%)	4 (1%)	84	71
All	All	905/938 (96%)	899 (99%)	6 (1%)	88	78

All (6) residues with a non-rotameric sidechain are listed below:

Mol	Chain	Res	Type
1	A	17	HIS
1	A	59	LYS
1	B	51	ASP
1	B	74	LYS
1	B	361	ASN
1	B	527	GLN

Some sidechains can be flipped to improve hydrogen bonding and reduce clashes. All (16) such sidechains are listed below:

Mol	Chain	Res	Type
1	A	34	GLN
1	A	221	ASN

*Continued on next page...*

*Continued from previous page...*

Mol	Chain	Res	Type
1	A	282	GLN
1	A	353	HIS
1	A	385	GLN
1	A	452	GLN
1	B	31	ASN
1	B	35	GLN
1	B	58	ASN
1	B	119	GLN
1	B	221	ASN
1	B	282	GLN
1	B	361	ASN
1	B	452	GLN
1	B	502	GLN
1	B	527	GLN

### 5.3.3 RNA [i](#)

There are no RNA molecules in this entry.

## 5.4 Non-standard residues in protein, DNA, RNA chains [i](#)

There are no non-standard protein/DNA/RNA residues in this entry.

## 5.5 Carbohydrates [i](#)

There are no carbohydrates in this entry.

## 5.6 Ligand geometry [i](#)

9 ligands are modelled in this entry.

In the following table, the Counts columns list the number of bonds (or angles) for which Mogul statistics could be retrieved, the number of bonds (or angles) that are observed in the model and the number of bonds (or angles) that are defined in the chemical component dictionary. The Link column lists molecule types, if any, to which the group is linked. The Z score for a bond length (or angle) is the number of standard deviations the observed value is removed from the expected value. A bond length (or angle) with  $|Z| > 2$  is considered an outlier worth inspection. RMSZ is the root-mean-square of all Z scores of the bond lengths (or angles).

Mol	Type	Chain	Res	Link	Bond lengths			Bond angles		
					Counts	RMSZ	# Z  > 2	Counts	RMSZ	# Z  > 2
2	HEC	A	601	1	24,50,50	2.43	5 (20%)	19,82,82	2.94	12 (63%)
3	DHE	A	602	1	29,56,56	5.83	9 (31%)	27,94,94	2.82	14 (51%)
4	GOL	A	611	-	5,5,5	4.22	1 (20%)	5,5,5	2.59	3 (60%)
4	GOL	A	612	-	5,5,5	4.03	1 (20%)	5,5,5	1.94	1 (20%)
5	SO4	A	621	-	4,4,4	0.92	0	6,6,6	0.11	0
2	HEC	B	601	1	24,50,50	2.38	4 (16%)	19,82,82	2.97	11 (57%)
3	DHE	B	602	1	29,56,56	5.70	9 (31%)	27,94,94	2.57	14 (51%)
5	SO4	B	621	-	4,4,4	0.94	0	6,6,6	0.17	0
5	SO4	B	622	-	4,4,4	0.92	0	6,6,6	0.07	0

In the following table, the Chirals column lists the number of chiral outliers, the number of chiral centers analysed, the number of these observed in the model and the number defined in the chemical component dictionary. Similar counts are reported in the Torsion and Rings columns. '-' means no outliers of that kind were identified.

Mol	Type	Chain	Res	Link	Chirals	Torsions	Rings
2	HEC	A	601	1	-	0/6/54/54	0/0/8/8
3	DHE	A	602	1	-	0/12/108/108	0/0/8/8
4	GOL	A	611	-	-	0/4/4/4	0/0/0/0
4	GOL	A	612	-	-	0/4/4/4	0/0/0/0
5	SO4	A	621	-	-	0/0/0/0	0/0/0/0
2	HEC	B	601	1	-	0/6/54/54	0/0/8/8
3	DHE	B	602	1	-	0/12/108/108	0/0/8/8
5	SO4	B	621	-	-	0/0/0/0	0/0/0/0
5	SO4	B	622	-	-	0/0/0/0	0/0/0/0

All (29) bond length outliers are listed below:

Mol	Chain	Res	Type	Atoms	Z	Observed(Å)	Ideal(Å)
3	A	602	DHE	C3B-C2B	-12.31	1.33	1.52
3	B	602	DHE	C3C-C2C	-12.11	1.33	1.52
3	A	602	DHE	C3C-C2C	-12.10	1.33	1.52
3	B	602	DHE	C3B-C2B	-11.26	1.35	1.52
3	A	602	DHE	CAB-C3B	-7.30	1.44	1.56
2	B	601	HEC	C3C-C2C	-6.99	1.33	1.40
2	A	601	HEC	C3B-C2B	-6.98	1.33	1.40
2	A	601	HEC	C3C-C2C	-6.93	1.33	1.40
3	B	602	DHE	CAC-C3C	-6.81	1.45	1.56
2	B	601	HEC	C3B-C2B	-6.80	1.33	1.40
3	A	602	DHE	CAC-C3C	-5.90	1.47	1.56
3	B	602	DHE	CAB-C3B	-5.66	1.47	1.56

*Continued on next page...*

*Continued from previous page...*

Mol	Chain	Res	Type	Atoms	Z	Observed(Å)	Ideal(Å)
2	A	601	HEC	CBC-CAC	-2.81	1.38	1.49
2	B	601	HEC	CBC-CAC	-2.80	1.38	1.49
2	A	601	HEC	CBB-CAB	-2.71	1.38	1.49
2	B	601	HEC	CBB-CAB	-2.34	1.39	1.49
3	B	602	DHE	CMA-C3A	2.07	1.55	1.51
2	A	601	HEC	C4B-NB	2.11	1.39	1.36
3	A	602	DHE	CMA-C3A	2.23	1.56	1.51
3	B	602	DHE	CAA-C2A	2.24	1.55	1.52
3	A	602	DHE	CAA-C2A	2.24	1.55	1.52
3	B	602	DHE	CHB-C1B	2.49	1.39	1.35
3	A	602	DHE	CHB-C1B	2.59	1.39	1.35
4	A	612	GOL	C1-C2	8.80	1.85	1.52
4	A	611	GOL	C1-C2	9.41	1.88	1.52
3	A	602	DHE	OMB-C2B	16.69	1.53	1.22
3	B	602	DHE	OMB-C2B	16.73	1.53	1.22
3	B	602	DHE	OMC-C2C	16.77	1.53	1.22
3	A	602	DHE	OMC-C2C	16.98	1.54	1.22

All (55) bond angle outliers are listed below:

Mol	Chain	Res	Type	Atoms	Z	Observed(°)	Ideal(°)
2	B	601	HEC	CBB-CAB-C3B	-6.45	113.02	127.35
2	A	601	HEC	CBB-CAB-C3B	-6.09	113.81	127.35
2	A	601	HEC	CBC-CAC-C3C	-5.88	114.28	127.35
2	B	601	HEC	CBC-CAC-C3C	-5.60	114.91	127.35
3	A	602	DHE	CGB-C3B-C2B	-5.09	95.96	109.78
4	A	611	GOL	C3-C2-C1	-4.16	94.82	111.12
3	A	602	DHE	CAA-C2A-C1A	-4.03	122.63	127.01
3	B	602	DHE	CGB-C3B-C2B	-3.94	99.08	109.78
3	B	602	DHE	CAA-C2A-C1A	-3.86	122.81	127.01
3	B	602	DHE	CGC-C3C-C2C	-3.85	99.33	109.78
3	A	602	DHE	CAD-C3D-C4D	-3.72	122.97	127.01
2	B	601	HEC	CAA-C2A-C1A	-3.55	123.15	127.01
2	A	601	HEC	CAD-C3D-C4D	-3.53	123.17	127.01
3	B	602	DHE	CAD-C3D-C4D	-3.52	123.19	127.01
2	A	601	HEC	CAA-C2A-C1A	-3.19	123.55	127.01
2	B	601	HEC	CMD-C2D-C1D	-3.11	123.21	128.36
2	B	601	HEC	CAD-C3D-C4D	-3.11	123.63	127.01
2	A	601	HEC	CMC-C2C-C1C	-3.11	123.22	128.36
4	A	612	GOL	C3-C2-C1	-3.11	98.94	111.12
2	B	601	HEC	CMC-C2C-C1C	-3.09	123.25	128.36
2	A	601	HEC	CMD-C2D-C1D	-3.06	123.30	128.36

*Continued on next page...*



*Continued from previous page...*

Mol	Chain	Res	Type	Atoms	Z	Observed(°)	Ideal(°)
3	B	602	DHE	CMA-C3A-C4A	-3.04	123.33	128.36
3	B	602	DHE	CMD-C2D-C1D	-2.95	123.48	128.36
2	B	601	HEC	CMB-C2B-C1B	-2.85	123.65	128.36
3	A	602	DHE	CMA-C3A-C4A	-2.85	123.65	128.36
4	A	611	GOL	O2-C2-C1	-2.85	95.60	108.65
4	A	611	GOL	O1-C1-C2	-2.83	96.46	110.18
3	B	602	DHE	OMB-C2B-C1B	-2.80	123.01	127.89
3	A	602	DHE	CMD-C2D-C1D	-2.71	123.88	128.36
2	A	601	HEC	CMB-C2B-C1B	-2.71	123.88	128.36
3	A	602	DHE	OMB-C2B-C1B	-2.69	123.21	127.89
2	A	601	HEC	C4C-C3C-C2C	2.00	108.51	106.35
2	A	601	HEC	C4B-C3B-C2B	2.04	108.56	106.35
2	B	601	HEC	CAA-CBA-CGA	2.08	116.56	112.75
2	B	601	HEC	C4B-C3B-C2B	2.16	108.68	106.35
2	A	601	HEC	CMA-C3A-C2A	2.22	129.87	125.24
3	A	602	DHE	C3B-CAB-CBB	2.27	118.96	115.45
2	A	601	HEC	CBA-CAA-C2A	2.39	116.80	112.53
3	B	602	DHE	C3B-CAB-CBB	2.48	119.29	115.45
2	B	601	HEC	CBA-CAA-C2A	2.57	117.13	112.53
3	B	602	DHE	CBD-CAD-C3D	2.68	117.33	112.53
3	A	602	DHE	CAD-CBD-CGD	2.73	117.74	112.75
3	B	602	DHE	CGB-C3B-CAB	2.73	113.01	109.76
3	B	602	DHE	OMB-C2B-C3B	2.85	129.66	125.93
3	A	602	DHE	OMB-C2B-C3B	2.90	129.73	125.93
3	B	602	DHE	OMC-C2C-C3C	2.97	129.82	125.93
3	A	602	DHE	OMC-C2C-C3C	3.21	130.14	125.93
3	A	602	DHE	CBD-CAD-C3D	3.31	118.46	112.53
2	B	601	HEC	CBD-CAD-C3D	3.73	119.21	112.53
2	A	601	HEC	CBD-CAD-C3D	3.73	119.21	112.53
3	B	602	DHE	CAA-CBA-CGA	4.26	120.56	112.75
3	A	602	DHE	CAA-CBA-CGA	4.64	121.25	112.75
3	B	602	DHE	C3C-CAC-CBC	4.95	123.13	115.45
3	A	602	DHE	C3C-CAC-CBC	5.09	123.34	115.45
3	A	602	DHE	CGB-C3B-CAB	5.71	116.56	109.76

There are no chirality outliers.

There are no torsion outliers.

There are no ring outliers.

6 monomers are involved in 27 short contacts:

Mol	Chain	Res	Type	Clashes	Symm-Clashes
2	A	601	HEC	3	0
3	A	602	DHE	5	0
4	A	611	GOL	5	0
4	A	612	GOL	5	0
2	B	601	HEC	6	0
3	B	602	DHE	3	0

## 5.7 Other polymers [i](#)

There are no such residues in this entry.

## 5.8 Polymer linkage issues [i](#)

There are no chain breaks in this entry.

## 6 Fit of model and data ⓘ

### 6.1 Protein, DNA and RNA chains ⓘ

EDS was not executed - this section will therefore be empty.

### 6.2 Non-standard residues in protein, DNA, RNA chains ⓘ

EDS was not executed - this section will therefore be empty.

### 6.3 Carbohydrates ⓘ

EDS was not executed - this section will therefore be empty.

### 6.4 Ligands ⓘ

EDS was not executed - this section will therefore be empty.

### 6.5 Other polymers ⓘ

EDS was not executed - this section will therefore be empty.