



Full wwPDB X-ray Structure Validation Report ⓘ

Feb 1, 2016 – 09:12 AM GMT

PDB ID : 3HKW
Title : HCV NS5B genotype 1a in complex with 1,5 benzodiazepine inhibitor 6
Authors : Nyanguile, O.; De Bondt, H.L.
Deposited on : 2009-05-26
Resolution : 1.55 Å(reported)

This is a Full wwPDB X-ray Structure Validation Report for a publicly released PDB entry.
We welcome your comments at validation@mail.wwpdb.org
A user guide is available at
<http://wwpdb.org/validation/2016/XrayValidationReportHelp>
with specific help available everywhere you see the ⓘ symbol.

The following versions of software and data (see [references ⓘ](#)) were used in the production of this report:

MolProbity : 4.02b-467
Mogul : 1.7 (RC4), CSD as536be (2015)
Xtriage (Phenix) : 1.9-1692
EDS : rb-20026688
Percentile statistics : 20151230.v01 (using entries in the PDB archive December 30th 2015)
Refmac : 5.8.0135
CCP4 : 6.5.0
Ideal geometry (proteins) : Engh & Huber (2001)
Ideal geometry (DNA, RNA) : Parkinson et al. (1996)
Validation Pipeline (wwPDB-VP) : trunk26865

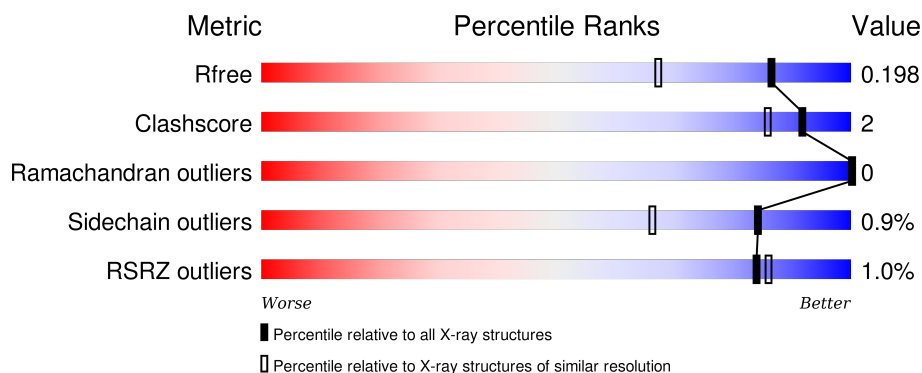
1 Overall quality at a glance

The following experimental techniques were used to determine the structure:

X-RAY DIFFRACTION

The reported resolution of this entry is 1.55 Å.

Percentile scores (ranging between 0-100) for global validation metrics of the entry are shown in the following graphic. The table shows the number of entries on which the scores are based.



Metric	Whole archive (#Entries)	Similar resolution (#Entries, resolution range(Å))
R_{free}	91344	1665 (1.58-1.54)
Clashscore	102246	1014 (1.56-1.56)
Ramachandran outliers	100387	1704 (1.58-1.54)
Sidechain outliers	100360	1702 (1.58-1.54)
RSRZ outliers	91569	1668 (1.58-1.54)

The table below summarises the geometric issues observed across the polymeric chains and their fit to the electron density. The red, orange, yellow and green segments on the lower bar indicate the fraction of residues that contain outliers for ≥ 3 , 2, 1 and 0 types of geometric quality criteria. A grey segment represents the fraction of residues that are not modelled. The numeric value for each fraction is indicated below the corresponding segment, with a dot representing fractions $\leq 5\%$. The upper red bar (where present) indicates the fraction of residues that have poor fit to the electron density. The numeric value is given above the bar.

Mol	Chain	Length	Quality of chain
1	A	581	<div> <div>92%</div> <div>5%</div> </div>
1	B	581	<div> <div>93%</div> <div></div> </div>
1	C	581	<div> <div>2%</div> <div>90%</div> <div>6%</div> </div>

The following table lists non-polymeric compounds, carbohydrate monomers and non-standard residues in protein, DNA, RNA chains that are outliers for geometric or electron-density-fit criteria:

Mol	Type	Chain	Res	Chirality	Geometry	Clashes	Electron density
3	SO4	A	585	-	-	-	X
3	SO4	B	580	-	-	-	X
3	SO4	B	582	-	-	-	X
3	SO4	B	583	-	-	-	X
3	SO4	C	582	-	-	-	X
3	SO4	C	584	-	-	-	X
4	GOL	A	587	-	-	-	X
4	GOL	B	585	-	-	-	X
4	GOL	B	586	-	-	-	X
4	GOL	B	588	-	-	-	X

2 Entry composition [i](#)

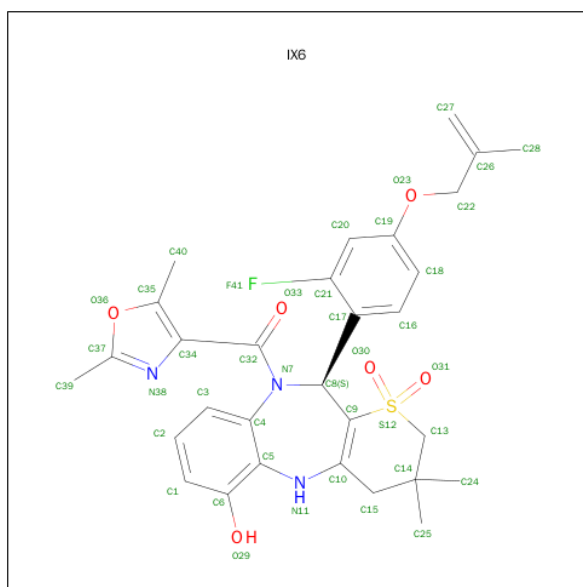
There are 5 unique types of molecules in this entry. The entry contains 15127 atoms, of which 0 are hydrogens and 0 are deuteriums.

In the tables below, the ZeroOcc column contains the number of atoms modelled with zero occupancy, the AltConf column contains the number of residues with at least one atom in alternate conformation and the Trace column contains the number of residues modelled with at most 2 atoms.

- Molecule 1 is a protein called NS5B RNA-dependent RNA polymerase.

Mol	Chain	Residues	Atoms					ZeroOcc	AltConf	Trace
1	A	561	Total	C	N	O	S	0	18	0
			4469	2808	795	828	38			
1	B	560	Total	C	N	O	S	4	14	0
			4431	2781	792	818	40			
1	C	560	Total	C	N	O	S	9	10	0
			4394	2759	787	813	35			

- Molecule 2 is (11S)-10-[(2,5-DIMETHYL-1,3-OXAZOL-4-YL)CARBONYL]-11-{2-FLUOR O-4-[(2-METHYLPROP-2-EN-1-YL)OXY]PHENYL}-3,3-DIMETHYL-2,3,4,5,10,11-HEX AHYDROTHIOPYRANO[3,2-B][1,5]BENZODIAZEPIN-6-OL 1,1-DIOXIDE (three-letter code: IX6) (formula: C₃₀H₃₂FN₃O₆S).



Mol	Chain	Residues	Atoms					ZeroOcc	AltConf
2	A	1	Total	C	F	N	O	S	0
			41	30	1	3	6	1	
2	B	1	Total	C	F	N	O	S	0
			41	30	1	3	6	1	

Continued on next page...

Continued from previous page...

Mol	Chain	Residues	Atoms						ZeroOcc	AltConf
2	C	1	Total	C	F	N	O	S	0	0
			41	30	1	3	6	1		

- Molecule 3 is SULFATE ION (three-letter code: SO4) (formula: O₄S).



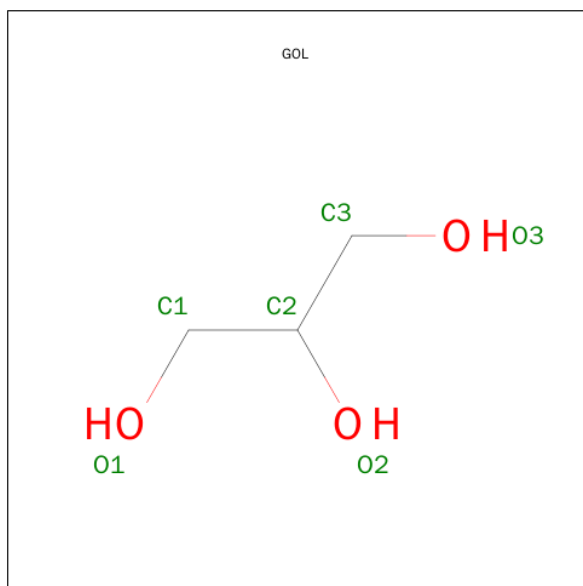
Mol	Chain	Residues	Atoms			ZeroOcc	AltConf
3	A	1	Total	O	S	0	0
			5	4	1		
3	A	1	Total	O	S	0	0
			5	4	1		
3	A	1	Total	O	S	0	0
			5	4	1		
3	A	1	Total	O	S	0	0
			5	4	1		
3	A	1	Total	O	S	0	0
			5	4	1		
3	A	1	Total	O	S	0	0
			5	4	1		
3	B	1	Total	O	S	0	0
			5	4	1		
3	B	1	Total	O	S	0	0
			5	4	1		
3	B	1	Total	O	S	0	0
			5	4	1		

Continued on next page...

Continued from previous page...

Mol	Chain	Residues	Atoms			ZeroOcc	AltConf
3	B	1	Total	O	S	0	0
			5	4	1		
3	B	1	Total	O	S	0	0
			5	4	1		
3	B	1	Total	O	S	0	0
			5	4	1		
3	C	1	Total	O	S	0	0
			5	4	1		
3	C	1	Total	O	S	0	0
			5	4	1		
3	C	1	Total	O	S	0	0
			5	4	1		
3	C	1	Total	O	S	0	0
			5	4	1		
3	C	1	Total	O	S	0	0
			5	4	1		

- Molecule 4 is GLYCEROL (three-letter code: GOL) (formula: C₃H₈O₃).



Mol	Chain	Residues	Atoms			ZeroOcc	AltConf
4	A	1	Total	C	O	0	0
			6	3	3		
4	A	1	Total	C	O	0	0
			6	3	3		

Continued on next page...

Continued from previous page...

Mol	Chain	Residues	Atoms			ZeroOcc	AltConf
4	A	1	Total	C	O	0	0
			6	3	3		
4	B	1	Total	C	O	0	0
			6	3	3		
4	B	1	Total	C	O	0	0
			6	3	3		
4	B	1	Total	C	O	0	0
			6	3	3		

- Molecule 5 is water.

Mol	Chain	Residues	Atoms		ZeroOcc	AltConf
5	A	560	Total	O	0	4
			564	564		
5	B	551	Total	O	0	2
			553	553		
5	C	459	Total	O	0	3
			462	462		

4 Data and refinement statistics

Property	Value	Source
Space group	P 1 21 1	Depositor
Cell constants a, b, c, α , β , γ	53.52Å 271.31Å 61.01Å 90.00° 98.82° 90.00°	Depositor
Resolution (Å)	136.08 – 1.55 60.29 – 1.55	Depositor EDS
% Data completeness (in resolution range)	89.8 (136.08-1.55) 89.8 (60.29-1.55)	Depositor EDS
R_{merge}	0.09	Depositor
R_{sym}	(Not available)	Depositor
$\langle I/\sigma(I) \rangle$ ¹	1.63 (at 1.55Å)	Xtriage
Refinement program	REFMAC 5.2.0005	Depositor
R, R_{free}	0.170 , 0.189 0.149 , 0.198	Depositor DCC
R_{free} test set	2226 reflections (1.01%)	DCC
Wilson B-factor (Å ²)	11.9	Xtriage
Anisotropy	0.307	Xtriage
Bulk solvent k_{sol} (e/Å ³), B_{sol} (Å ²)	0.39 , 62.4	EDS
Estimated twinning fraction	No twinning to report.	Xtriage
L-test for twinning ²	$\langle L \rangle = 0.50$, $\langle L^2 \rangle = 0.34$	Xtriage
Outliers	0 of 222098 reflections	Xtriage
F_o, F_c correlation	0.97	EDS
Total number of atoms	15127	wwPDB-VP
Average B, all atoms (Å ²)	16.0	wwPDB-VP

Xtriage's analysis on translational NCS is as follows: *The largest off-origin peak in the Patterson function is 8.27% of the height of the origin peak. No significant pseudotranslation is detected.*

¹Intensities estimated from amplitudes.

²Theoretical values of $\langle |L| \rangle$, $\langle L^2 \rangle$ for acentric reflections are 0.5, 0.375 respectively for untwinned datasets, and 0.333, 0.2 for perfectly twinned datasets.

5 Model quality [i](#)

5.1 Standard geometry [i](#)

Bond lengths and bond angles in the following residue types are not validated in this section: GOL, IX6, SO4

The Z score for a bond length (or angle) is the number of standard deviations the observed value is removed from the expected value. A bond length (or angle) with $|Z| > 5$ is considered an outlier worth inspection. RMSZ is the root-mean-square of all Z scores of the bond lengths (or angles).

Mol	Chain	Bond lengths		Bond angles	
		RMSZ	# Z >5	RMSZ	# Z >5
1	A	0.47	0/4564	0.65	0/6188
1	B	0.48	0/4529	0.64	1/6140 (0.0%)
1	C	0.45	0/4488	0.61	2/6086 (0.0%)
All	All	0.47	0/13581	0.63	3/18414 (0.0%)

There are no bond length outliers.

All (3) bond angle outliers are listed below:

Mol	Chain	Res	Type	Atoms	Z	Observed(°)	Ideal(°)
1	C	401[A]	ARG	CG-CD-NE	5.90	124.20	111.80
1	C	401[B]	ARG	CG-CD-NE	5.90	124.20	111.80
1	B	337	ARG	NE-CZ-NH2	5.02	122.81	120.30

There are no chirality outliers.

There are no planarity outliers.

5.2 Too-close contacts [i](#)

In the following table, the Non-H and H(model) columns list the number of non-hydrogen atoms and hydrogen atoms in the chain respectively. The H(added) column lists the number of hydrogen atoms added and optimized by MolProbity. The Clashes column lists the number of clashes within the asymmetric unit, whereas Symm-Clashes lists symmetry related clashes.

Mol	Chain	Non-H	H(model)	H(added)	Clashes	Symm-Clashes
1	A	4469	0	4456	16	0
1	B	4431	0	4420	16	0
1	C	4394	0	4384	24	0
2	A	41	0	32	0	0
2	B	41	0	31	1	0

Continued on next page...

Continued from previous page...

Mol	Chain	Non-H	H(model)	H(added)	Clashes	Symm-Clashes
2	C	41	0	32	0	0
3	A	35	0	0	1	0
3	B	30	0	0	0	0
3	C	30	0	0	0	0
4	A	18	0	24	1	0
4	B	18	0	24	0	0
5	A	564	0	0	3	0
5	B	553	0	0	5	1
5	C	462	0	0	5	0
All	All	15127	0	13403	56	1

The all-atom clashscore is defined as the number of clashes found per 1000 atoms (including hydrogen atoms). The all-atom clashscore for this structure is 2.

All (56) close contacts within the same asymmetric unit are listed below, sorted by their clash magnitude.

Atom-1	Atom-2	Interatomic distance (Å)	Clash overlap (Å)
1:B:24:ASN:HD22	1:B:27[B]:SER:H	1.38	0.72
1:A:24:ASN:HD22	1:A:27:SER:H	1.37	0.72
1:B:24:ASN:HD22	1:B:27[A]:SER:H	1.41	0.68
1:B:187[A]:MET:CE	1:B:292:THR:HG22	2.29	0.63
1:C:123:TRP:HE1	1:C:248:GLN:HE21	1.50	0.59
1:C:233:ILE:O	1:C:236[B]:GLU:HG2	2.03	0.59
1:A:236[B]:GLU:HG2	5:A:599:HOH:O	2.05	0.56
1:C:321:VAL:CG2	1:C:365[B]:SER:HB3	2.37	0.54
1:B:359:ASP:HB3	1:B:362:LEU:HD22	1.88	0.54
1:C:500:TRP:HA	1:C:503:ARG:HD2	1.90	0.54
1:A:186:VAL:HG23	1:A:187[B]:MET:HG3	1.90	0.53
1:A:141:LYS:HE3	1:A:160:ILE:HB	1.91	0.53
1:A:34:HIS:HE1	4:A:586:GOL:O3	1.93	0.52
1:B:187[A]:MET:HE1	1:B:292:THR:HG22	1.92	0.52
1:C:123:TRP:HE1	1:C:248:GLN:NE2	2.06	0.52
1:B:563:SER:HB3	5:B:1456:HOH:O	2.11	0.51
1:B:233:ILE:O	1:B:236[B]:GLU:HG2	2.11	0.51
1:C:52:VAL:HG12	1:C:223[B]:CYS:SG	2.51	0.51
1:A:372:VAL:HG22	1:A:382:TYR:CD1	2.47	0.50
1:C:206:GLN:NE2	5:C:734:HOH:O	2.45	0.49
1:C:321:VAL:CG2	1:C:365[A]:SER:HB2	2.42	0.49
1:A:184:GLN:HG3	1:B:113:ARG:HD3	1.94	0.49
1:C:71:VAL:HG22	1:C:186:VAL:HG13	1.95	0.49
1:C:527:ASN:O	1:C:533:LYS:NZ	2.45	0.48

Continued on next page...

Continued from previous page...

Atom-1	Atom-2	Interatomic distance (Å)	Clash overlap (Å)
1:B:141:LYS:NZ	5:B:863:HOH:O	2.39	0.47
1:C:141:LYS:HZ3	1:C:160:ILE:HB	1.80	0.47
1:A:236[B]:GLU:HG3	1:A:240:TYR:CE2	2.49	0.47
1:B:9:ALA:HB2	5:B:1229:HOH:O	2.14	0.47
1:C:321:VAL:CG2	1:C:365[B]:SER:CB	2.93	0.47
1:C:170:CYS:HA	1:C:173:MET:HE3	1.97	0.47
1:B:52:VAL:HG12	1:B:223[B]:CYS:SG	2.55	0.47
1:A:52:VAL:HG12	1:A:223[B]:CYS:SG	2.55	0.46
1:C:321:VAL:HG22	1:C:365[B]:SER:HB3	1.98	0.45
1:C:83:LEU:HB2	1:C:173:MET:HA	1.98	0.45
1:A:361:GLU:HG2	1:A:370:VAL:O	2.17	0.45
1:C:118:HIS:HE1	5:C:715:HOH:O	2.00	0.45
1:C:490:ARG:HG3	5:C:1236:HOH:O	2.17	0.44
1:C:336[B]:LEU:HG	1:C:354:PRO:HG2	1.99	0.44
1:C:461:PRO:HB2	1:C:545:LEU:HD11	2.00	0.44
1:A:209:LYS:NZ	3:A:581:SO4:O3	2.48	0.43
1:A:419[B]:LEU:HD21	1:A:497:LEU:HD11	1.99	0.43
1:C:98:ARG:NH1	5:C:1213:HOH:O	2.51	0.43
1:B:178:VAL:HG23	5:B:890:HOH:O	2.19	0.43
1:C:336[B]:LEU:HD21	1:C:354:PRO:HB2	2.00	0.42
1:C:405:VAL:HG13	1:C:445:CYS:HA	2.01	0.42
1:A:236[B]:GLU:CG	5:A:599:HOH:O	2.67	0.42
1:B:118:HIS:HE1	5:B:795:HOH:O	2.02	0.42
1:B:187[B]:MET:HE1	1:B:315:VAL:HB	2.02	0.41
2:B:579:IX6:H40A	2:B:579:IX6:C5	2.51	0.41
1:A:321:VAL:CG2	1:A:365:SER:HB2	2.50	0.41
1:B:46[B]:CYS:HA	1:B:49:GLN:HE21	1.85	0.41
1:C:187:MET:HE1	1:C:315:VAL:HB	2.02	0.41
1:B:46[C]:CYS:HA	1:B:49:GLN:HE21	1.85	0.41
1:A:361:GLU:HG3	5:A:1291:HOH:O	2.20	0.40
1:A:123:TRP:HE1	1:A:248:GLN:NE2	2.19	0.40
1:C:178:VAL:HG23	5:C:1044:HOH:O	2.21	0.40

All (1) symmetry-related close contacts are listed below. The label for Atom-2 includes the symmetry operator and encoded unit-cell translations to be applied.

Atom-1	Atom-2	Interatomic distance (Å)	Clash overlap (Å)
5:B:594:HOH:O	5:B:679:HOH:O[1_554]	1.61	0.59

5.3 Torsion angles

5.3.1 Protein backbone

In the following table, the Percentiles column shows the percent Ramachandran outliers of the chain as a percentile score with respect to all X-ray entries followed by that with respect to entries of similar resolution.

The Analysed column shows the number of residues for which the backbone conformation was analysed, and the total number of residues.

Mol	Chain	Analysed	Favoured	Allowed	Outliers	Percentiles	
1	A	575/581 (99%)	564 (98%)	11 (2%)	0	100	100
1	B	570/581 (98%)	561 (98%)	9 (2%)	0	100	100
1	C	565/581 (97%)	553 (98%)	12 (2%)	0	100	100
All	All	1710/1743 (98%)	1678 (98%)	32 (2%)	0	100	100

There are no Ramachandran outliers to report.

5.3.2 Protein sidechains

In the following table, the Percentiles column shows the percent sidechain outliers of the chain as a percentile score with respect to all X-ray entries followed by that with respect to entries of similar resolution.

The Analysed column shows the number of residues for which the sidechain conformation was analysed, and the total number of residues.

Mol	Chain	Analysed	Rotameric	Outliers	Percentiles	
1	A	486/486 (100%)	480 (99%)	6 (1%)	78	54
1	B	482/486 (99%)	479 (99%)	3 (1%)	90	78
1	C	476/486 (98%)	472 (99%)	4 (1%)	86	71
All	All	1444/1458 (99%)	1431 (99%)	13 (1%)	84	66

All (13) residues with a non-rotameric sidechain are listed below:

Mol	Chain	Res	Type
1	A	10	LEU
1	A	184	GLN
1	A	222	ARG
1	A	362	LEU
1	A	433	LEU

Continued on next page...

Continued from previous page...

Mol	Chain	Res	Type
1	A	502	HIS
1	B	362	LEU
1	B	502	HIS
1	B	534	LEU
1	C	10	LEU
1	C	184	GLN
1	C	206	GLN
1	C	498	ARG

Some sidechains can be flipped to improve hydrogen bonding and reduce clashes. All (23) such sidechains are listed below:

Mol	Chain	Res	Type
1	A	24	ASN
1	A	34	HIS
1	A	35	ASN
1	A	49	GLN
1	A	148	GLN
1	A	206	GLN
1	A	248	GLN
1	A	273	ASN
1	A	483	ASN
1	B	24	ASN
1	B	34	HIS
1	B	49	GLN
1	B	248	GLN
1	B	273	ASN
1	B	483	ASN
1	C	35	ASN
1	C	49	GLN
1	C	65	GLN
1	C	184	GLN
1	C	206	GLN
1	C	248	GLN
1	C	273	ASN
1	C	483	ASN

5.3.3 RNA ⓘ

There are no RNA molecules in this entry.

5.4 Non-standard residues in protein, DNA, RNA chains ⓘ

There are no non-standard protein/DNA/RNA residues in this entry.

5.5 Carbohydrates ⓘ

There are no carbohydrates in this entry.

5.6 Ligand geometry ⓘ

28 ligands are modelled in this entry.

In the following table, the Counts columns list the number of bonds (or angles) for which Mogul statistics could be retrieved, the number of bonds (or angles) that are observed in the model and the number of bonds (or angles) that are defined in the chemical component dictionary. The Link column lists molecule types, if any, to which the group is linked. The Z score for a bond length (or angle) is the number of standard deviations the observed value is removed from the expected value. A bond length (or angle) with $|Z| > 2$ is considered an outlier worth inspection. RMSZ is the root-mean-square of all Z scores of the bond lengths (or angles).

Mol	Type	Chain	Res	Link	Bond lengths			Bond angles		
					Counts	RMSZ	$\# Z > 2$	Counts	RMSZ	$\# Z > 2$
2	IX6	A	579	-	32,45,45	0.86	2 (6%)	47,70,70	1.89	11 (23%)
3	SO4	A	580	-	4,4,4	0.53	0	6,6,6	0.25	0
3	SO4	A	581	-	4,4,4	0.52	0	6,6,6	0.54	0
3	SO4	A	582	-	4,4,4	0.26	0	6,6,6	0.24	0
3	SO4	A	583	-	4,4,4	0.27	0	6,6,6	0.16	0
3	SO4	A	584	-	4,4,4	0.25	0	6,6,6	0.17	0
3	SO4	A	585	-	4,4,4	0.38	0	6,6,6	0.26	0
4	GOL	A	586	-	5,5,5	0.26	0	5,5,5	0.69	0
4	GOL	A	587	-	5,5,5	0.25	0	5,5,5	0.31	0
3	SO4	A	588	-	4,4,4	0.15	0	6,6,6	0.22	0
4	GOL	A	589	-	5,5,5	0.42	0	5,5,5	0.21	0
2	IX6	B	579	-	32,45,45	0.86	2 (6%)	47,70,70	1.76	7 (14%)
3	SO4	B	580	-	4,4,4	0.26	0	6,6,6	0.16	0
3	SO4	B	581	-	4,4,4	0.10	0	6,6,6	0.15	0
3	SO4	B	582	-	4,4,4	0.31	0	6,6,6	0.41	0
3	SO4	B	583	-	4,4,4	0.26	0	6,6,6	0.18	0
3	SO4	B	584	-	4,4,4	0.36	0	6,6,6	0.29	0
4	GOL	B	585	-	5,5,5	0.42	0	5,5,5	0.66	0
4	GOL	B	586	-	5,5,5	0.33	0	5,5,5	0.41	0
3	SO4	B	587	-	4,4,4	0.18	0	6,6,6	0.18	0
4	GOL	B	588	-	5,5,5	0.40	0	5,5,5	0.35	0
2	IX6	C	579	-	32,45,45	0.73	0	47,70,70	1.93	8 (17%)

Mol	Type	Chain	Res	Link	Bond lengths			Bond angles		
					Counts	RMSZ	# Z > 2	Counts	RMSZ	# Z > 2
3	SO4	C	580	-	4,4,4	0.32	0	6,6,6	0.22	0
3	SO4	C	581	-	4,4,4	0.24	0	6,6,6	0.17	0
3	SO4	C	582	-	4,4,4	0.40	0	6,6,6	0.33	0
3	SO4	C	583	-	4,4,4	0.29	0	6,6,6	0.07	0
3	SO4	C	584	-	4,4,4	0.22	0	6,6,6	0.10	0
3	SO4	C	585	-	4,4,4	0.26	0	6,6,6	0.23	0

In the following table, the Chirals column lists the number of chiral outliers, the number of chiral centers analysed, the number of these observed in the model and the number defined in the chemical component dictionary. Similar counts are reported in the Torsion and Rings columns. '-' means no outliers of that kind were identified.

Mol	Type	Chain	Res	Link	Chirals	Torsions	Rings
2	IX6	A	579	-	-	0/13/54/54	0/2/5/5
3	SO4	A	580	-	-	0/0/0/0	0/0/0/0
3	SO4	A	581	-	-	0/0/0/0	0/0/0/0
3	SO4	A	582	-	-	0/0/0/0	0/0/0/0
3	SO4	A	583	-	-	0/0/0/0	0/0/0/0
3	SO4	A	584	-	-	0/0/0/0	0/0/0/0
3	SO4	A	585	-	-	0/0/0/0	0/0/0/0
4	GOL	A	586	-	-	0/4/4/4	0/0/0/0
4	GOL	A	587	-	-	0/4/4/4	0/0/0/0
3	SO4	A	588	-	-	0/0/0/0	0/0/0/0
4	GOL	A	589	-	-	0/4/4/4	0/0/0/0
2	IX6	B	579	-	-	0/13/54/54	0/2/5/5
3	SO4	B	580	-	-	0/0/0/0	0/0/0/0
3	SO4	B	581	-	-	0/0/0/0	0/0/0/0
3	SO4	B	582	-	-	0/0/0/0	0/0/0/0
3	SO4	B	583	-	-	0/0/0/0	0/0/0/0
3	SO4	B	584	-	-	0/0/0/0	0/0/0/0
4	GOL	B	585	-	-	0/4/4/4	0/0/0/0
4	GOL	B	586	-	-	0/4/4/4	0/0/0/0
3	SO4	B	587	-	-	0/0/0/0	0/0/0/0
4	GOL	B	588	-	-	0/4/4/4	0/0/0/0
2	IX6	C	579	-	-	0/13/54/54	0/2/5/5
3	SO4	C	580	-	-	0/0/0/0	0/0/0/0
3	SO4	C	581	-	-	0/0/0/0	0/0/0/0
3	SO4	C	582	-	-	0/0/0/0	0/0/0/0
3	SO4	C	583	-	-	0/0/0/0	0/0/0/0
3	SO4	C	584	-	-	0/0/0/0	0/0/0/0
3	SO4	C	585	-	-	0/0/0/0	0/0/0/0

All (4) bond length outliers are listed below:

Mol	Chain	Res	Type	Atoms	Z	Observed(Å)	Ideal(Å)
2	A	579	IX6	C17-C8	2.06	1.54	1.52
2	B	579	IX6	C40-C35	2.12	1.51	1.48
2	A	579	IX6	C15-C10	2.28	1.53	1.50
2	B	579	IX6	C15-C10	2.65	1.53	1.50

All (26) bond angle outliers are listed below:

Mol	Chain	Res	Type	Atoms	Z	Observed(°)	Ideal(°)
2	C	579	IX6	O31-S12-O30	-6.76	110.54	117.11
2	A	579	IX6	O31-S12-O30	-5.69	111.57	117.11
2	A	579	IX6	O33-C32-N7	-5.18	114.65	121.45
2	C	579	IX6	O33-C32-N7	-5.14	114.70	121.45
2	B	579	IX6	O33-C32-N7	-4.99	114.90	121.45
2	B	579	IX6	O31-S12-O30	-4.76	112.48	117.11
2	C	579	IX6	C20-C21-C17	-2.84	120.76	123.78
2	A	579	IX6	C20-C21-C17	-2.38	121.24	123.78
2	A	579	IX6	C6-C5-N11	-2.16	114.84	118.91
2	B	579	IX6	C20-C21-C17	-2.04	121.61	123.78
2	A	579	IX6	C16-C17-C8	2.29	124.54	120.62
2	C	579	IX6	C28-C26-C22	2.89	120.24	114.22
2	C	579	IX6	C14-C15-C10	3.00	117.14	113.39
2	A	579	IX6	C28-C26-C22	3.09	120.65	114.22
2	B	579	IX6	C22-O23-C19	3.12	123.52	117.62
2	A	579	IX6	O30-S12-C13	3.15	112.40	109.11
2	A	579	IX6	C22-O23-C19	3.20	123.67	117.62
2	B	579	IX6	C34-C32-N7	3.32	126.07	118.51
2	A	579	IX6	C5-C4-N7	3.36	121.13	119.18
2	C	579	IX6	C22-O23-C19	3.52	124.27	117.62
2	C	579	IX6	C5-C4-N7	3.66	121.30	119.18
2	A	579	IX6	C34-C32-N7	3.86	127.29	118.51
2	C	579	IX6	C34-C32-N7	4.11	127.87	118.51
2	A	579	IX6	C14-C15-C10	4.30	118.77	113.39
2	B	579	IX6	C5-C4-N7	4.49	121.79	119.18
2	B	579	IX6	C14-C15-C10	4.67	119.23	113.39

There are no chirality outliers.

There are no torsion outliers.

There are no ring outliers.

3 monomers are involved in 3 short contacts:

Mol	Chain	Res	Type	Clashes	Symm-Clashes
3	A	581	SO4	1	0

Continued on next page...

Continued from previous page...

Mol	Chain	Res	Type	Clashes	Symm-Clashes
4	A	586	GOL	1	0
2	B	579	IX6	1	0

5.7 Other polymers [i](#)

There are no such residues in this entry.

5.8 Polymer linkage issues [i](#)

There are no chain breaks in this entry.

6 Fit of model and data [i](#)

6.1 Protein, DNA and RNA chains [i](#)

In the following table, the column labelled ‘#RSRZ> 2’ contains the number (and percentage) of RSRZ outliers, followed by percent RSRZ outliers for the chain as percentile scores relative to all X-ray entries and entries of similar resolution. The OWAB column contains the minimum, median, 95th percentile and maximum values of the occupancy-weighted average B-factor per residue. The column labelled ‘Q< 0.9’ lists the number of (and percentage) of residues with an average occupancy less than 0.9.

Mol	Chain	Analysed	<RSRZ>	#RSRZ>2		OWAB(Å ²)	Q<0.9
1	A	561/581 (96%)	-0.45	3 (0%)	91 93	6, 11, 24, 40	9 (1%)
1	B	560/581 (96%)	-0.39	4 (0%)	89 90	6, 12, 28, 40	9 (1%)
1	C	560/581 (96%)	-0.25	9 (1%)	74 77	8, 16, 33, 47	15 (2%)
All	All	1681/1743 (96%)	-0.37	16 (0%)	84 86	6, 13, 29, 47	33 (1%)

All (16) RSRZ outliers are listed below:

Mol	Chain	Res	Type	RSRZ
1	C	23	ILE	4.3
1	C	14	CYS	4.2
1	C	563	SER	4.0
1	C	152	GLY	3.9
1	C	24	ASN	3.3
1	C	15	ALA	3.0
1	B	153	GLY	2.9
1	C	153	GLY	2.6
1	B	544	GLN	2.5
1	A	14	CYS	2.3
1	C	22	PRO	2.3
1	A	563	SER	2.2
1	B	563	SER	2.2
1	A	153	GLY	2.2
1	B	540	ALA	2.2
1	C	110	CYS	2.1

6.2 Non-standard residues in protein, DNA, RNA chains [i](#)

There are no non-standard protein/DNA/RNA residues in this entry.

6.3 Carbohydrates ⓘ

There are no carbohydrates in this entry.

6.4 Ligands ⓘ

In the following table, the Atoms column lists the number of modelled atoms in the group and the number defined in the chemical component dictionary. LLDF column lists the quality of electron density of the group with respect to its neighbouring residues in protein, DNA or RNA chains. The B-factors column lists the minimum, median, 95th percentile and maximum values of B factors of atoms in the group. The column labelled 'Q< 0.9' lists the number of atoms with occupancy less than 0.9.

Mol	Type	Chain	Res	Atoms	RSCC	RSR	LLDF	B-factors(Å ²)	Q<0.9
4	GOL	B	585	6/6	0.94	0.14	11.96	23,33,35,39	0
4	GOL	B	588	6/6	0.82	0.16	9.19	48,49,51,53	0
3	SO4	B	580	5/5	0.98	0.08	6.88	26,26,31,31	0
3	SO4	B	583	5/5	0.98	0.11	6.05	48,51,56,58	0
3	SO4	B	582	5/5	0.98	0.08	6.02	23,26,28,29	0
4	GOL	B	586	6/6	0.94	0.12	5.90	14,16,23,33	0
4	GOL	A	587	6/6	0.94	0.09	4.55	12,14,24,27	0
3	SO4	C	584	5/5	0.94	0.18	3.94	65,67,68,70	0
3	SO4	C	582	5/5	0.99	0.08	2.85	23,27,28,29	0
3	SO4	A	585	5/5	0.98	0.12	2.52	8,13,15,17	5
3	SO4	A	582	5/5	0.99	0.07	1.44	24,26,29,32	0
4	GOL	A	586	6/6	0.97	0.08	1.38	11,13,18,21	0
3	SO4	C	585	5/5	0.95	0.09	0.46	59,61,62,64	0
3	SO4	A	584	5/5	0.98	0.07	0.39	37,37,39,43	0
3	SO4	B	581	5/5	0.98	0.10	0.24	22,25,30,34	0
2	IX6	C	579	41/41	0.98	0.07	0.08	8,11,16,19	0
2	IX6	B	579	41/41	0.98	0.06	-0.28	5,9,14,14	0
3	SO4	C	581	5/5	0.99	0.09	-0.31	29,31,34,38	0
2	IX6	A	579	41/41	0.98	0.06	-0.37	4,8,13,14	0
3	SO4	B	584	5/5	0.98	0.08	-0.70	29,30,32,33	0
3	SO4	C	580	5/5	0.98	0.07	-0.92	23,25,27,28	0
3	SO4	A	583	5/5	0.99	0.05	-1.22	21,25,27,35	0
3	SO4	A	580	5/5	1.00	0.05	-1.52	14,15,18,20	0
3	SO4	A	581	5/5	0.99	0.06	-2.68	13,15,21,24	0
4	GOL	A	589	6/6	0.90	0.16	-	38,39,42,46	0
3	SO4	C	583	5/5	0.91	0.14	-	68,68,69,71	0
3	SO4	A	588	5/5	0.96	0.12	-	38,46,49,50	0
3	SO4	B	587	5/5	0.93	0.15	-	60,61,63,65	0

6.5 Other polymers

There are no such residues in this entry.