



# Full wwPDB X-ray Structure Validation Report ⓘ

Feb 19, 2016 – 11:09 PM GMT

PDB ID : 5HKO  
Title : Crystal structure of ABC transporter Solute Binding Protein MSMEG\_3598 from Mycobacterium smegmatis str. MC2 155, target EFI-510969, in complex with L-sorbitol  
Authors : Roth, Y.; Vetting, M.W.; Al Obaidi, N.F.; Toro, R.; Morisco, L.L.; Benach, J.; Koss, J.; Wasserman, S.R.; Gerlt, J.A.; Almo, S.C.; Enzyme Function Initiative (EFI)  
Deposited on : 2016-01-14  
Resolution : 1.20 Å(reported)

This is a Full wwPDB X-ray Structure Validation Report for a publicly released PDB entry.  
We welcome your comments at [validation@mail.wwpdb.org](mailto:validation@mail.wwpdb.org)  
A user guide is available at  
<http://wwpdb.org/validation/2016/XrayValidationReportHelp>  
with specific help available everywhere you see the ⓘ symbol.

---

The following versions of software and data (see [references ⓘ](#)) were used in the production of this report:

MolProbity : 4.02b-467  
Mogul : 1.7.1 (RC1), CSD as537be (2016)  
Xtriage (Phenix) : 1.9-1692  
EDS : rb-20026982  
Percentile statistics : 20151230.v01 (using entries in the PDB archive December 30th 2015)  
Refmac : 5.8.0135  
CCP4 : 6.5.0  
Ideal geometry (proteins) : Engh & Huber (2001)  
Ideal geometry (DNA, RNA) : Parkinson et al. (1996)  
Validation Pipeline (wwPDB-VP) : rb-20026982

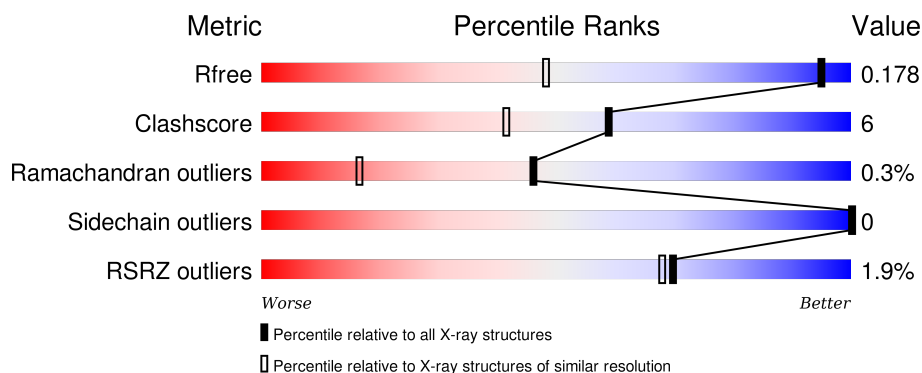
# 1 Overall quality at a glance

The following experimental techniques were used to determine the structure:

## *X-RAY DIFFRACTION*

The reported resolution of this entry is 1.20 Å.

Percentile scores (ranging between 0-100) for global validation metrics of the entry are shown in the following graphic. The table shows the number of entries on which the scores are based.



Metric	Whole archive (#Entries)	Similar resolution (#Entries, resolution range(Å))
$R_{free}$	91344	1495 (1.26-1.14)
Clashscore	102246	1607 (1.26-1.14)
Ramachandran outliers	100387	1540 (1.26-1.14)
Sidechain outliers	100360	1538 (1.26-1.14)
RSRZ outliers	91569	1500 (1.26-1.14)

The table below summarises the geometric issues observed across the polymeric chains and their fit to the electron density. The red, orange, yellow and green segments on the lower bar indicate the fraction of residues that contain outliers for  $\geq 3$ , 2, 1 and 0 types of geometric quality criteria. A grey segment represents the fraction of residues that are not modelled. The numeric value for each fraction is indicated below the corresponding segment, with a dot representing fractions  $\leq 5\%$ . The upper red bar (where present) indicates the fraction of residues that have poor fit to the electron density. The numeric value is given above the bar.

Mol	Chain	Length	Quality of chain
1	A	348	

The following table lists non-polymeric compounds, carbohydrate monomers and non-standard residues in protein, DNA, RNA chains that are outliers for geometric or electron-density-fit criteria:

Mol	Type	Chain	Res	Chirality	Geometry	Clashes	Electron density
2	ZN	A	412	-	-	X	-

*Continued on next page...*

*Continued from previous page...*

Mol	Type	Chain	Res	Chirality	Geometry	Clashes	Electron density
3	CL	A	420	-	-	X	-
3	CL	A	424	-	-	X	-
5	IMD	A	428	-	-	-	X
5	IMD	A	429	-	-	-	X
6	ACT	A	432	-	-	X	-
6	ACT	A	433	-	-	-	X

## 2 Entry composition

There are 7 unique types of molecules in this entry. The entry contains 2717 atoms, of which 0 are hydrogens and 0 are deuteriums.

In the tables below, the ZeroOcc column contains the number of atoms modelled with zero occupancy, the AltConf column contains the number of residues with at least one atom in alternate conformation and the Trace column contains the number of residues modelled with at most 2 atoms.

- Molecule 1 is a protein called ABC transporter, carbohydrate uptake transporter-2 (CUT2) family, periplasmic sugar-binding protein.

Mol	Chain	Residues	Atoms					ZeroOcc	AltConf	Trace
1	A	314	Total	C	N	O	S	0	7	0
			2357	1466	402	481	8			

There are 23 discrepancies between the modelled and reference sequences:

Chain	Residue	Modelled	Actual	Comment	Reference
A	2	MET	-	initiating methionine	UNP A0QYB3
A	3	HIS	-	expression tag	UNP A0QYB3
A	4	HIS	-	expression tag	UNP A0QYB3
A	5	HIS	-	expression tag	UNP A0QYB3
A	6	HIS	-	expression tag	UNP A0QYB3
A	7	HIS	-	expression tag	UNP A0QYB3
A	8	HIS	-	expression tag	UNP A0QYB3
A	9	SER	-	expression tag	UNP A0QYB3
A	10	SER	-	expression tag	UNP A0QYB3
A	11	GLY	-	expression tag	UNP A0QYB3
A	12	VAL	-	expression tag	UNP A0QYB3
A	13	ASP	-	expression tag	UNP A0QYB3
A	14	LEU	-	expression tag	UNP A0QYB3
A	15	GLY	-	expression tag	UNP A0QYB3
A	16	THR	-	expression tag	UNP A0QYB3
A	17	GLU	-	expression tag	UNP A0QYB3
A	18	ASN	-	expression tag	UNP A0QYB3
A	19	LEU	-	expression tag	UNP A0QYB3
A	20	TYR	-	expression tag	UNP A0QYB3
A	21	PHE	-	expression tag	UNP A0QYB3
A	22	GLN	-	expression tag	UNP A0QYB3
A	23	SER	-	expression tag	UNP A0QYB3
A	24	MET	-	expression tag	UNP A0QYB3

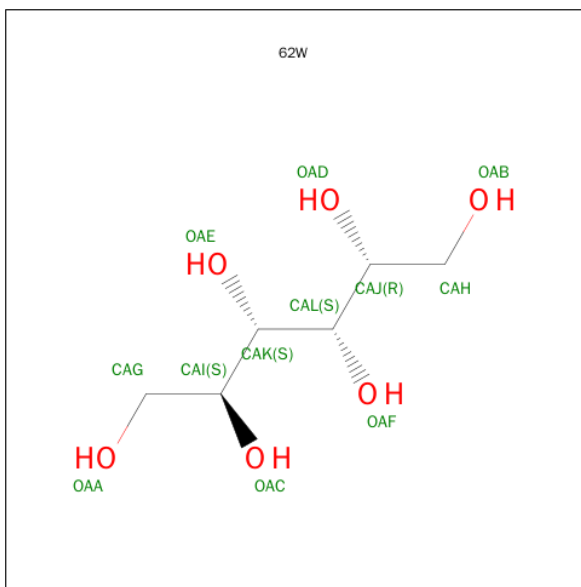
- Molecule 2 is ZINC ION (three-letter code: ZN) (formula: Zn).

Mol	Chain	Residues	Atoms		ZeroOcc	AltConf
2	A	15	Total	Zn	0	0
			15	15		

- Molecule 3 is CHLORIDE ION (three-letter code: CL) (formula: Cl).

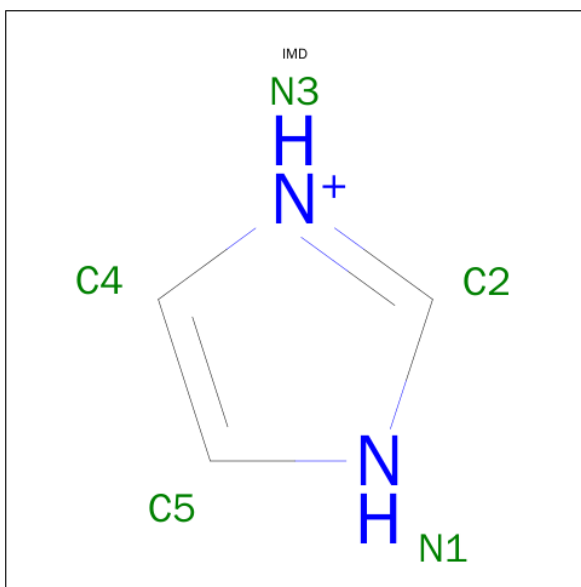
Mol	Chain	Residues	Atoms		ZeroOcc	AltConf
3	A	9	Total	Cl	0	0
			9	9		

- Molecule 4 is L-glucitol (three-letter code: 62W) (formula: C<sub>6</sub>H<sub>14</sub>O<sub>6</sub>).



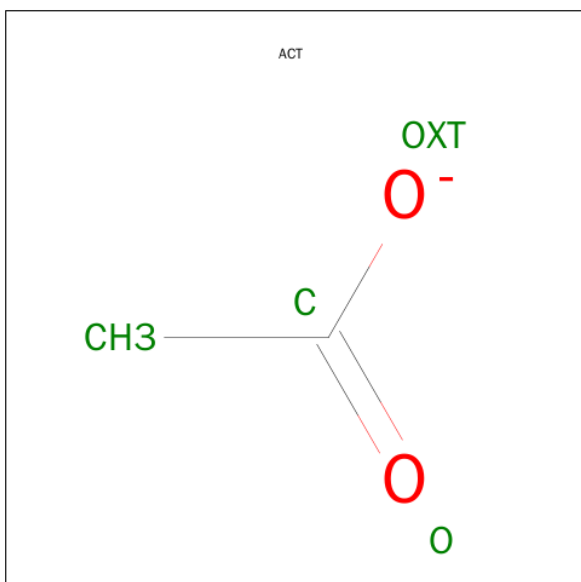
Mol	Chain	Residues	Atoms			ZeroOcc	AltConf
4	A	1	Total	C	O	0	0
			12	6	6		

- Molecule 5 is IMIDAZOLE (three-letter code: IMD) (formula: C<sub>3</sub>H<sub>5</sub>N<sub>2</sub>).



Mol	Chain	Residues	Atoms			ZeroOcc	AltConf
5	A	1	Total	C	N	0	0
			5	3	2		
5	A	1	Total	C	N	0	0
			5	3	2		
5	A	1	Total	C	N	0	0
			5	3	2		
5	A	1	Total	C	N	0	0
			5	3	2		
5	A	1	Total	C	N	0	0
			5	3	2		

- Molecule 6 is ACETATE ION (three-letter code: ACT) (formula:  $C_2H_3O_2$ ).



Mol	Chain	Residues	Atoms			ZeroOcc	AltConf
6	A	1	Total	C	O	0	0
			4	2	2		
6	A	1	Total	C	O	0	0
			4	2	2		
6	A	1	Total	C	O	0	0
			4	2	2		

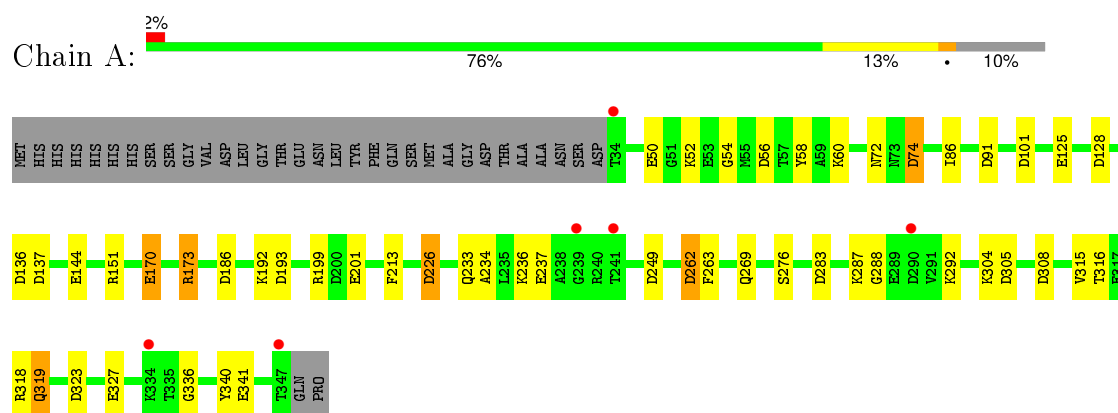
- Molecule 7 is water.

Mol	Chain	Residues	Atoms		ZeroOcc	AltConf
7	A	287	Total	O	0	0
			287	287		

### 3 Residue-property plots [i](#)

These plots are drawn for all protein, RNA and DNA chains in the entry. The first graphic for a chain summarises the proportions of errors displayed in the second graphic. The second graphic shows the sequence view annotated by issues in geometry and electron density. Residues are color-coded according to the number of geometric quality criteria for which they contain at least one outlier: green = 0, yellow = 1, orange = 2 and red = 3 or more. A red dot above a residue indicates a poor fit to the electron density ( $RSRZ > 2$ ). Stretches of 2 or more consecutive residues without any outlier are shown as a green connector. Residues present in the sample, but not in the model, are shown in grey.

- Molecule 1: ABC transporter, carbohydrate uptake transporter-2 (CUT2) family, periplasmic sugar-binding protein





## 4 Data and refinement statistics

Property	Value	Source
Space group	P 21 21 21	Depositor
Cell constants a, b, c, $\alpha$ , $\beta$ , $\gamma$	62.95Å 62.94Å 73.15Å 90.00° 90.00° 90.00°	Depositor
Resolution (Å)	47.71 – 1.20 28.26 – 1.20	Depositor EDS
% Data completeness (in resolution range)	100.0 (47.71-1.20) 100.0 (28.26-1.20)	Depositor EDS
$R_{merge}$	0.09	Depositor
$R_{sym}$	(Not available)	Depositor
$\langle I/\sigma(I) \rangle$ <sup>1</sup>	2.62 (at 1.20Å)	Xtriage
Refinement program	REFMAC	Depositor
R, $R_{free}$	0.156 , 0.178 0.156 , 0.178	Depositor DCC
$R_{free}$ test set	4464 reflections (5.14%)	DCC
Wilson B-factor (Å <sup>2</sup> )	10.3	Xtriage
Anisotropy	0.225	Xtriage
Bulk solvent $k_{sol}$ (e/Å <sup>3</sup> ), $B_{sol}$ (Å <sup>2</sup> )	0.43 , 47.6	EDS
Estimated twinning fraction	0.020 for k,h,-l	Xtriage
L-test for twinning <sup>2</sup>	$\langle  L  \rangle = 0.49$ , $\langle L^2 \rangle = 0.32$	Xtriage
Outliers	0 of 91429 reflections	Xtriage
$F_o, F_c$ correlation	0.97	EDS
Total number of atoms	2717	wwPDB-VP
Average B, all atoms (Å <sup>2</sup> )	14.0	wwPDB-VP

Xtriage's analysis on translational NCS is as follows: *The largest off-origin peak in the Patterson function is 5.42% of the height of the origin peak. No significant pseudotranslation is detected.*

<sup>1</sup>Intensities estimated from amplitudes.

<sup>2</sup>Theoretical values of  $\langle |L| \rangle$ ,  $\langle L^2 \rangle$  for acentric reflections are 0.5, 0.375 respectively for untwinned datasets, and 0.333, 0.2 for perfectly twinned datasets.

## 5 Model quality

### 5.1 Standard geometry

Bond lengths and bond angles in the following residue types are not validated in this section: ZN, ACT, 62W, IMD, CL

The Z score for a bond length (or angle) is the number of standard deviations the observed value is removed from the expected value. A bond length (or angle) with  $|Z| > 5$  is considered an outlier worth inspection. RMSZ is the root-mean-square of all Z scores of the bond lengths (or angles).

Mol	Chain	Bond lengths		Bond angles	
		RMSZ	$\# Z  > 5$	RMSZ	$\# Z  > 5$
1	A	1.71	29/2393 (1.2%)	1.50	35/3246 (1.1%)

Chiral center outliers are detected by calculating the chiral volume of a chiral center and verifying if the center is modelled as a planar moiety or with the opposite hand. A planarity outlier is detected by checking planarity of atoms in a peptide group, atoms in a mainchain group or atoms of a sidechain that are expected to be planar.

Mol	Chain	#Chirality outliers	#Planarity outliers
1	A	0	1

All (29) bond length outliers are listed below:

Mol	Chain	Res	Type	Atoms	Z	Observed(Å)	Ideal(Å)
1	A	58	TYR	CZ-OH	12.52	1.59	1.37
1	A	125	GLU	CG-CD	-10.70	1.35	1.51
1	A	128	ASP	CG-OD2	-9.56	1.03	1.25
1	A	58	TYR	CE2-CZ	-8.97	1.26	1.38
1	A	128	ASP	CB-CG	8.54	1.69	1.51
1	A	125	GLU	CD-OE2	8.54	1.35	1.25
1	A	340	TYR	CE1-CZ	-8.54	1.27	1.38
1	A	58	TYR	CD1-CE1	8.23	1.51	1.39
1	A	50	GLU	CD-OE1	8.07	1.34	1.25
1	A	288	GLY	CA-C	-7.70	1.39	1.51
1	A	74	ASP	CG-OD2	-7.33	1.08	1.25
1	A	144	GLU	CD-OE1	6.88	1.33	1.25
1	A	170	GLU	CD-OE2	6.87	1.33	1.25
1	A	236	LYS	C-O	6.72	1.36	1.23
1	A	319	GLN	CG-CD	6.66	1.66	1.51
1	A	276	SER	CB-OG	-6.47	1.33	1.42
1	A	304	LYS	CB-CG	-6.22	1.35	1.52
1	A	287	LYS	C-O	5.81	1.34	1.23

*Continued on next page...*

*Continued from previous page...*

Mol	Chain	Res	Type	Atoms	Z	Observed(Å)	Ideal(Å)
1	A	319	GLN	CD-OE1	5.54	1.36	1.24
1	A	327	GLU	CD-OE1	5.47	1.31	1.25
1	A	192	LYS	CB-CG	-5.34	1.38	1.52
1	A	234	ALA	C-O	5.34	1.33	1.23
1	A	316	THR	C-O	5.32	1.33	1.23
1	A	288	GLY	N-CA	5.31	1.54	1.46
1	A	54	GLY	CA-C	-5.29	1.43	1.51
1	A	58	TYR	CG-CD2	-5.25	1.32	1.39
1	A	269	GLN	CD-OE1	5.18	1.35	1.24
1	A	213	PHE	CG-CD1	5.12	1.46	1.38
1	A	315	VAL	CA-C	-5.07	1.39	1.52

All (35) bond angle outliers are listed below:

Mol	Chain	Res	Type	Atoms	Z	Observed(°)	Ideal(°)
1	A	58	TYR	CG-CD1-CE1	-11.03	112.47	121.30
1	A	308	ASP	CB-CG-OD1	11.03	128.23	118.30
1	A	323	ASP	CB-CG-OD1	10.79	128.01	118.30
1	A	128	ASP	CB-CG-OD2	-9.80	109.48	118.30
1	A	58	TYR	CZ-CE2-CD2	-9.28	111.45	119.80
1	A	58	TYR	CG-CD2-CE2	9.25	128.70	121.30
1	A	91	ASP	CB-CG-OD1	-9.13	110.08	118.30
1	A	283	ASP	CB-CG-OD2	-8.60	110.56	118.30
1	A	193	ASP	CB-CG-OD2	-8.36	110.78	118.30
1	A	136	ASP	CB-CG-OD1	6.87	124.48	118.30
1	A	199	ARG	NE-CZ-NH1	-6.61	117.00	120.30
1	A	151[A]	ARG	NE-CZ-NH2	-6.58	117.01	120.30
1	A	151[B]	ARG	NE-CZ-NH2	-6.58	117.01	120.30
1	A	186	ASP	CB-CG-OD2	6.58	124.22	118.30
1	A	262	ASP	CB-CG-OD2	-6.47	112.47	118.30
1	A	173	ARG	NE-CZ-NH2	-6.38	117.11	120.30
1	A	292	LYS	CD-CE-NZ	-6.15	97.55	111.70
1	A	263	PHE	CB-CG-CD2	-6.15	116.49	120.80
1	A	56	ASP	CB-CG-OD1	5.99	123.69	118.30
1	A	151[A]	ARG	NE-CZ-NH1	5.98	123.29	120.30
1	A	151[B]	ARG	NE-CZ-NH1	5.98	123.29	120.30
1	A	308	ASP	CB-CG-OD2	-5.88	113.01	118.30
1	A	226	ASP	CB-CG-OD2	5.86	123.58	118.30
1	A	101	ASP	CB-CG-OD2	-5.83	113.05	118.30
1	A	199	ARG	CG-CD-NE	-5.83	99.56	111.80
1	A	305	ASP	CB-CG-OD1	5.78	123.50	118.30
1	A	58	TYR	CE1-CZ-CE2	5.76	129.02	119.80

*Continued on next page...*

*Continued from previous page...*

Mol	Chain	Res	Type	Atoms	Z	Observed(°)	Ideal(°)
1	A	287	LYS	CD-CE-NZ	-5.66	98.69	111.70
1	A	137	ASP	CB-CG-OD2	-5.61	113.25	118.30
1	A	341	GLU	OE1-CD-OE2	-5.61	116.57	123.30
1	A	60	LYS	CD-CE-NZ	-5.51	99.03	111.70
1	A	323	ASP	CB-CG-OD2	-5.50	113.35	118.30
1	A	52	LYS	CD-CE-NZ	5.37	124.05	111.70
1	A	262	ASP	OD1-CG-OD2	5.35	133.47	123.30
1	A	86	ILE	O-C-N	5.23	131.07	122.70

There are no chirality outliers.

All (1) planarity outliers are listed below:

Mol	Chain	Res	Type	Group
1	A	173	ARG	Sidechain

## 5.2 Too-close contacts ⓘ

In the following table, the Non-H and H(model) columns list the number of non-hydrogen atoms and hydrogen atoms in the chain respectively. The H(added) column lists the number of hydrogen atoms added and optimized by MolProbity. The Clashes column lists the number of clashes within the asymmetric unit, whereas Symm-Clashes lists symmetry related clashes.

Mol	Chain	Non-H	H(model)	H(added)	Clashes	Symm-Clashes
1	A	2357	0	2365	19	0
2	A	15	0	0	3	0
3	A	9	0	0	10	1
4	A	12	0	14	0	0
5	A	25	0	21	4	0
6	A	12	0	9	4	0
7	A	287	0	0	14	6
All	All	2717	0	2409	28	6

The all-atom clashscore is defined as the number of clashes found per 1000 atoms (including hydrogen atoms). The all-atom clashscore for this structure is 6.

All (28) close contacts within the same asymmetric unit are listed below, sorted by their clash magnitude.

Atom-1	Atom-2	Interatomic distance (Å)	Clash overlap (Å)
3:A:424:CL:CL	5:A:428:IMD:C5	2.17	1.29

*Continued on next page...*

*Continued from previous page...*

Atom-1	Atom-2	Interatomic distance (Å)	Clash overlap (Å)
3:A:423:CL:CL	3:A:424:CL:CL	2.28	1.24
3:A:424:CL:CL	5:A:428:IMD:N1	2.12	1.19
3:A:424:CL:CL	5:A:428:IMD:H5	1.78	1.19
1:A:170:GLU:OE2	3:A:420:CL:CL	2.07	1.08
1:A:72:ASN:HB2	7:A:733:HOH:O	1.58	1.04
3:A:420:CL:CL	7:A:746:HOH:O	2.20	0.96
2:A:412:ZN:ZN	7:A:504:HOH:O	1.13	0.94
1:A:201[B]:GLU:OE2	7:A:501:HOH:O	1.97	0.82
2:A:412:ZN:ZN	3:A:420:CL:CL	1.67	0.78
1:A:74:ASP:OD1	7:A:503:HOH:O	2.09	0.71
1:A:72:ASN:CB	7:A:733:HOH:O	2.27	0.70
2:A:414:ZN:ZN	3:A:424:CL:CL	1.80	0.67
5:A:426:IMD:H4	7:A:675:HOH:O	1.94	0.67
1:A:318:ARG:HB2	6:A:432:ACT:H2	1.77	0.67
1:A:233:GLN:NE2	1:A:237:GLU:OE2	2.23	0.66
1:A:226:ASP:OD2	7:A:505:HOH:O	2.14	0.65
1:A:170:GLU:OE1	7:A:504:HOH:O	2.14	0.64
1:A:262:ASP:OD2	7:A:506:HOH:O	2.16	0.59
1:A:319:GLN:HG3	7:A:778:HOH:O	2.02	0.59
1:A:170:GLU:CD	3:A:420:CL:CL	2.79	0.57
1:A:319:GLN:CD	6:A:432:ACT:H3	2.26	0.56
1:A:72:ASN:CG	7:A:509:HOH:O	2.46	0.54
1:A:319:GLN:NE2	6:A:432:ACT:H3	2.23	0.54
1:A:318:ARG:CB	6:A:432:ACT:H2	2.37	0.54
1:A:336:GLY:HA2	7:A:672:HOH:O	2.08	0.52
1:A:319:GLN:CG	7:A:778:HOH:O	2.61	0.46
1:A:170:GLU:OE1	3:A:420:CL:CL	2.74	0.42

All (6) symmetry-related close contacts are listed below. The label for Atom-2 includes the symmetry operator and encoded unit-cell translations to be applied.

Atom-1	Atom-2	Interatomic distance (Å)	Clash overlap (Å)
7:A:516:HOH:O	7:A:681:HOH:O[4_545]	1.91	0.29
3:A:424:CL:CL	7:A:535:HOH:O[4_545]	2.07	0.13
7:A:729:HOH:O	7:A:738:HOH:O[4_545]	2.07	0.13
7:A:675:HOH:O	7:A:692:HOH:O[4_445]	2.10	0.10
7:A:518:HOH:O	7:A:732:HOH:O[3_555]	2.11	0.09
7:A:515:HOH:O	7:A:765:HOH:O[3_544]	2.17	0.03

## 5.3 Torsion angles [i](#)

### 5.3.1 Protein backbone [i](#)

In the following table, the Percentiles column shows the percent Ramachandran outliers of the chain as a percentile score with respect to all X-ray entries followed by that with respect to entries of similar resolution.

The Analysed column shows the number of residues for which the backbone conformation was analysed, and the total number of residues.

Mol	Chain	Analysed	Favoured	Allowed	Outliers	Percentiles	
1	A	319/348 (92%)	312 (98%)	6 (2%)	1 (0%)	46	16

All (1) Ramachandran outliers are listed below:

Mol	Chain	Res	Type
1	A	249	ASP

### 5.3.2 Protein sidechains [i](#)

In the following table, the Percentiles column shows the percent sidechain outliers of the chain as a percentile score with respect to all X-ray entries followed by that with respect to entries of similar resolution.

The Analysed column shows the number of residues for which the sidechain conformation was analysed, and the total number of residues.

Mol	Chain	Analysed	Rotameric	Outliers	Percentiles	
1	A	254/275 (92%)	254 (100%)	0	100	100

There are no protein residues with a non-rotameric sidechain to report.

Some sidechains can be flipped to improve hydrogen bonding and reduce clashes. There are no such sidechains identified.

### 5.3.3 RNA [i](#)

There are no RNA molecules in this entry.

## 5.4 Non-standard residues in protein, DNA, RNA chains [i](#)

There are no non-standard protein/DNA/RNA residues in this entry.

## 5.5 Carbohydrates ⓘ

There are no carbohydrates in this entry.

## 5.6 Ligand geometry ⓘ

Of 33 ligands modelled in this entry, 24 are monoatomic - leaving 9 for Mogul analysis.

In the following table, the Counts columns list the number of bonds (or angles) for which Mogul statistics could be retrieved, the number of bonds (or angles) that are observed in the model and the number of bonds (or angles) that are defined in the chemical component dictionary. The Link column lists molecule types, if any, to which the group is linked. The Z score for a bond length (or angle) is the number of standard deviations the observed value is removed from the expected value. A bond length (or angle) with  $|Z| > 2$  is considered an outlier worth inspection. RMSZ is the root-mean-square of all Z scores of the bond lengths (or angles).

Mol	Type	Chain	Res	Link	Bond lengths			Bond angles		
					Counts	RMSZ	$\# Z  > 2$	Counts	RMSZ	$\# Z  > 2$
4	62W	A	425	-	11,11,11	0.85	0	14,14,14	0.69	0
5	IMD	A	426	2	3,5,5	1.10	0	4,5,5	1.31	1 (25%)
5	IMD	A	427	2	3,5,5	0.25	0	4,5,5	1.52	1 (25%)
5	IMD	A	428	2	3,5,5	1.46	0	4,5,5	0.91	0
5	IMD	A	429	2	3,5,5	0.93	0	4,5,5	1.11	0
5	IMD	A	430	2	3,5,5	0.54	0	4,5,5	0.78	0
6	ACT	A	431	2	0,3,3	0.00	-	0,3,3	0.00	-
6	ACT	A	432	2	0,3,3	0.00	-	0,3,3	0.00	-
6	ACT	A	433	2	0,3,3	0.00	-	0,3,3	0.00	-

In the following table, the Chirals column lists the number of chiral outliers, the number of chiral centers analysed, the number of these observed in the model and the number defined in the chemical component dictionary. Similar counts are reported in the Torsion and Rings columns. '-' means no outliers of that kind were identified.

Mol	Type	Chain	Res	Link	Chirals	Torsions	Rings
4	62W	A	425	-	-	0/16/16/16	0/0/0/0
5	IMD	A	426	2	-	0/0/0/0	0/1/1/1
5	IMD	A	427	2	-	0/0/0/0	0/1/1/1
5	IMD	A	428	2	-	0/0/0/0	0/1/1/1
5	IMD	A	429	2	-	0/0/0/0	0/1/1/1
5	IMD	A	430	2	-	0/0/0/0	0/1/1/1
6	ACT	A	431	2	-	0/0/0/0	0/0/0/0
6	ACT	A	432	2	-	0/0/0/0	0/0/0/0
6	ACT	A	433	2	-	0/0/0/0	0/0/0/0

There are no bond length outliers.

All (2) bond angle outliers are listed below:

Mol	Chain	Res	Type	Atoms	Z	Observed( $^{\circ}$ )	Ideal( $^{\circ}$ )
5	A	426	IMD	C4-C5-N1	2.13	111.67	107.75
5	A	427	IMD	C4-C5-N1	2.79	112.88	107.75

There are no chirality outliers.

There are no torsion outliers.

There are no ring outliers.

3 monomers are involved in 8 short contacts:

Mol	Chain	Res	Type	Clashes	Symm-Clashes
5	A	426	IMD	1	0
5	A	428	IMD	3	0
6	A	432	ACT	4	0

## 5.7 Other polymers [i](#)

There are no such residues in this entry.

## 5.8 Polymer linkage issues [i](#)

There are no chain breaks in this entry.



## 6 Fit of model and data ⓘ

### 6.1 Protein, DNA and RNA chains ⓘ

In the following table, the column labelled ‘#RSRZ> 2’ contains the number (and percentage) of RSRZ outliers, followed by percent RSRZ outliers for the chain as percentile scores relative to all X-ray entries and entries of similar resolution. The OWAB column contains the minimum, median, 95<sup>th</sup> percentile and maximum values of the occupancy-weighted average B-factor per residue. The column labelled ‘Q< 0.9’ lists the number of (and percentage) of residues with an average occupancy less than 0.9.

Mol	Chain	Analysed	<RSRZ>	#RSRZ>2	OWAB(Å <sup>2</sup> )	Q<0.9
1	A	314/348 (90%)	-0.25	6 (1%) 70 68	6, 12, 25, 40	0

All (6) RSRZ outliers are listed below:

Mol	Chain	Res	Type	RSRZ
1	A	290	ASP	3.8
1	A	241	THR	2.9
1	A	347	THR	2.6
1	A	334	LYS	2.4
1	A	239	GLY	2.3
1	A	34	THR	2.2

### 6.2 Non-standard residues in protein, DNA, RNA chains ⓘ

There are no non-standard protein/DNA/RNA residues in this entry.

### 6.3 Carbohydrates ⓘ

There are no carbohydrates in this entry.

### 6.4 Ligands ⓘ

In the following table, the Atoms column lists the number of modelled atoms in the group and the number defined in the chemical component dictionary. LLDF column lists the quality of electron density of the group with respect to its neighbouring residues in protein, DNA or RNA chains. The B-factors column lists the minimum, median, 95<sup>th</sup> percentile and maximum values of B factors of atoms in the group. The column labelled ‘Q< 0.9’ lists the number of atoms with occupancy less than 0.9.

Mol	Type	Chain	Res	Atoms	RSCC	RSR	LLDF	B-factors( $\text{\AA}^2$ )	Q<0.9
5	IMD	A	428	5/5	0.84	0.11	3.51	15,16,17,18	0
5	IMD	A	429	5/5	0.87	0.15	3.32	25,32,32,35	0
6	ACT	A	433	4/4	0.69	0.15	2.18	25,27,33,34	0
6	ACT	A	432	4/4	0.97	0.12	1.77	13,13,14,16	0
4	62W	A	425	12/12	0.99	0.09	0.65	5,6,6,7	0
5	IMD	A	427	5/5	0.93	0.07	-0.05	16,18,20,22	0
5	IMD	A	426	5/5	0.96	0.07	-0.41	8,8,10,12	0
6	ACT	A	431	4/4	0.98	0.05	-1.11	10,10,11,12	0
3	CL	A	422	1/1	0.98	0.04	-1.13	11,11,11,11	0
2	ZN	A	413	1/1	0.99	0.03	-1.34	9,9,9,9	0
3	CL	A	421	1/1	0.99	0.03	-2.46	11,11,11,11	0
3	CL	A	416	1/1	1.00	0.02	-2.59	12,12,12,12	0
2	ZN	A	402	1/1	0.99	0.02	-3.53	10,10,10,10	0
3	CL	A	418	1/1	0.99	0.03	-	13,13,13,13	0
2	ZN	A	414	1/1	0.99	0.20	-	19,19,19,19	0
3	CL	A	424	1/1	0.94	0.13	-	15,15,15,15	0
3	CL	A	423	1/1	0.95	0.07	-	16,16,16,16	0
3	CL	A	419	1/1	0.93	0.07	-	16,16,16,16	0
2	ZN	A	412	1/1	0.95	0.14	-	22,22,22,22	1
2	ZN	A	404	1/1	0.97	0.13	-	20,20,20,20	1
2	ZN	A	406	1/1	0.91	0.10	-	25,25,25,25	0
3	CL	A	417	1/1	0.97	0.04	-	13,13,13,13	0
2	ZN	A	408	1/1	0.99	0.03	-	11,11,11,11	0
2	ZN	A	401	1/1	0.98	0.03	-	12,12,12,12	0
2	ZN	A	405	1/1	0.96	0.12	-	20,20,20,20	0
2	ZN	A	411	1/1	0.96	0.22	-	33,33,33,33	1
2	ZN	A	409	1/1	0.94	0.19	-	24,24,24,24	1
2	ZN	A	415	1/1	0.98	0.24	-	34,34,34,34	0
2	ZN	A	410	1/1	0.87	0.10	-	38,38,38,38	0
2	ZN	A	403	1/1	0.99	0.07	-	17,17,17,17	0
5	IMD	A	430	5/5	0.79	0.22	-	26,27,34,36	0
2	ZN	A	407	1/1	0.97	0.20	-	27,27,27,27	1
3	CL	A	420	1/1	0.97	0.12	-	16,16,16,16	0

## 6.5 Other polymers ⓘ

There are no such residues in this entry.