



wwPDB X-ray Structure Validation Summary Report ⓘ

Feb 1, 2016 – 05:14 PM GMT

PDB ID : 4HNA
Title : Kinesin motor domain in the ADP-MG-ALFX state in complex with tubulin and a DARPIN
Authors : Gigant, B.; Knossow, M.
Deposited on : 2012-10-19
Resolution : 3.19 Å(reported)

This is a wwPDB X-ray Structure Validation Summary Report for a publicly released PDB entry.
We welcome your comments at validation@mail.wwpdb.org
A user guide is available at
<http://wwpdb.org/validation/2016/XrayValidationReportHelp>
with specific help available everywhere you see the ⓘ symbol.

The following versions of software and data (see [references ⓘ](#)) were used in the production of this report:

MolProbity : 4.02b-467
Mogul : 1.7 (RC4), CSD as536be (2015)
Xtriage (Phenix) : 1.9-1692
EDS : rb-20026688
Percentile statistics : 20151230.v01 (using entries in the PDB archive December 30th 2015)
Refmac : 5.8.0135
CCP4 : 6.5.0
Ideal geometry (proteins) : Engh & Huber (2001)
Ideal geometry (DNA, RNA) : Parkinson et al. (1996)
Validation Pipeline (wwPDB-VP) : trunk26865

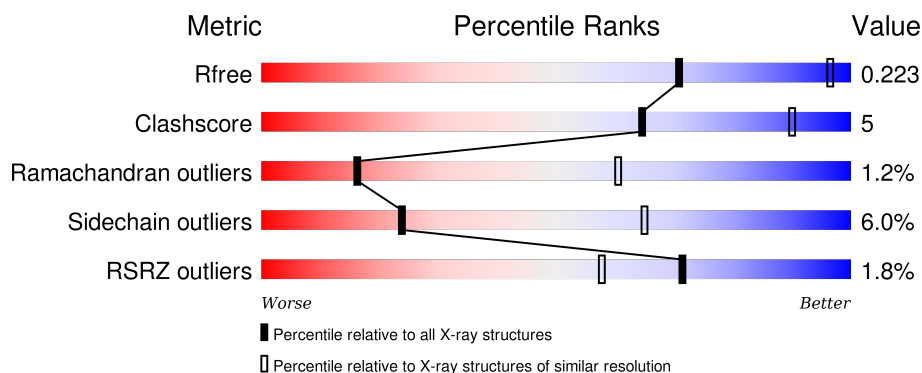
1 Overall quality at a glance

The following experimental techniques were used to determine the structure:

X-RAY DIFFRACTION

The reported resolution of this entry is 3.19 Å.

Percentile scores (ranging between 0-100) for global validation metrics of the entry are shown in the following graphic. The table shows the number of entries on which the scores are based.



Metric	Whole archive (#Entries)	Similar resolution (#Entries, resolution range(Å))
R_{free}	91344	1124 (3.24-3.16)
Clashscore	102246	1024 (3.22-3.18)
Ramachandran outliers	100387	1004 (3.22-3.18)
Sidechain outliers	100360	1003 (3.22-3.18)
RSRZ outliers	91569	1129 (3.24-3.16)

The table below summarises the geometric issues observed across the polymeric chains and their fit to the electron density. The red, orange, yellow and green segments on the lower bar indicate the fraction of residues that contain outliers for ≥ 3 , 2, 1 and 0 types of geometric quality criteria. A grey segment represents the fraction of residues that are not modelled. The numeric value for each fraction is indicated below the corresponding segment, with a dot representing fractions $\leq 5\%$. The upper red bar (where present) indicates the fraction of residues that have poor fit to the electron density. The numeric value is given above the bar.

Mol	Chain	Length	Quality of chain
1	A	451	<div> <div>3%</div> <div>77%</div> <div>17%</div> <div>• 5%</div> </div>
2	B	445	<div> <div>86%</div> <div>10%</div> <div>• •</div> </div>
3	D	169	<div> <div>2%</div> <div>84%</div> <div>10%</div> <div>6%</div> </div>
4	K	349	<div> <div>2%</div> <div>72%</div> <div>21%</div> <div>• 5%</div> </div>

2 Entry composition [i](#)

There are 10 unique types of molecules in this entry. The entry contains 10607 atoms, of which 0 are hydrogens and 0 are deuteriums.

In the tables below, the ZeroOcc column contains the number of atoms modelled with zero occupancy, the AltConf column contains the number of residues with at least one atom in alternate conformation and the Trace column contains the number of residues modelled with at most 2 atoms.

- Molecule 1 is a protein called Tubulin alpha chain.

Mol	Chain	Residues	Atoms					ZeroOcc	AltConf	Trace
1	A	430	Total	C	N	O	S	0	0	0
			3349	2123	571	633	22			

There are 2 discrepancies between the modelled and reference sequences:

Chain	Residue	Modelled	Actual	Comment	Reference
A	232	SER	GLY	SEE REMARK 999	UNP D0VWZ0
A	340	SER	THR	SEE REMARK 999	UNP D0VWZ0

- Molecule 2 is a protein called Tubulin beta chain.

Mol	Chain	Residues	Atoms					ZeroOcc	AltConf	Trace
2	B	431	Total	C	N	O	S	0	0	0
			3378	2118	579	655	26			

There is a discrepancy between the modelled and reference sequences:

Chain	Residue	Modelled	Actual	Comment	Reference
B	318	ILE	VAL	SEE REMARK 999	UNP D0VWY9

- Molecule 3 is a protein called DESIGNED ANKYRIN REPEAT PROTEIN (DARPIN) D2.

Mol	Chain	Residues	Atoms					ZeroOcc	AltConf	Trace
3	D	159	Total	C	N	O	S	0	0	0
			1185	743	202	238	2			

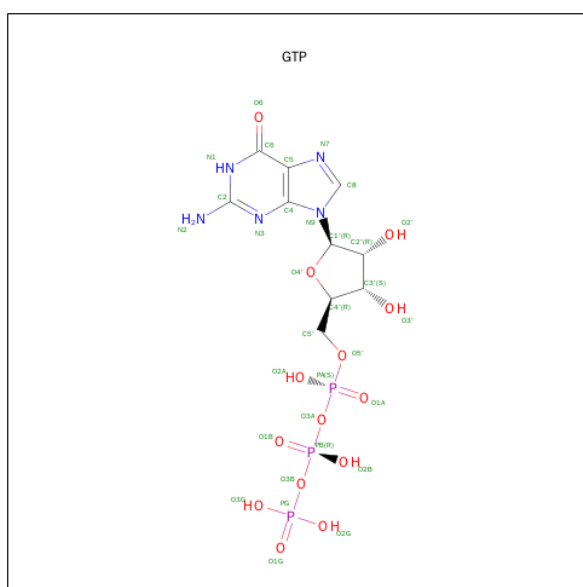
- Molecule 4 is a protein called Kinesin-1 heavy chain.

Mol	Chain	Residues	Atoms					ZeroOcc	AltConf	Trace
4	K	333	Total	C	N	O	S	0	0	0
			2593	1616	447	520	10			

There are 6 discrepancies between the modelled and reference sequences:

Chain	Residue	Modelled	Actual	Comment	Reference
K	7	SER	CYS	SEE REMARK 999	UNP P33176
K	65	ALA	CYS	SEE REMARK 999	UNP P33176
K	168	ALA	CYS	SEE REMARK 999	UNP P33176
K	174	SER	CYS	SEE REMARK 999	UNP P33176
K	294	ALA	CYS	SEE REMARK 999	UNP P33176
K	330	SER	CYS	SEE REMARK 999	UNP P33176

- Molecule 5 is GUANOSINE-5'-TRIPHOSPHATE (three-letter code: GTP) (formula: $C_{10}H_{16}N_5O_{14}P_3$).

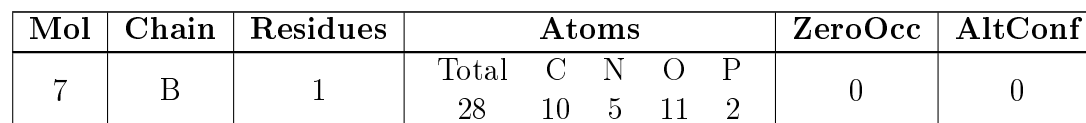


Mol	Chain	Residues	Atoms					ZeroOcc	AltConf
5	A	1	Total	C	N	O	P	0	0
			32	10	5	14	3		

- Molecule 6 is MAGNESIUM ION (three-letter code: MG) (formula: Mg).

Mol	Chain	Residues	Atoms		ZeroOcc	AltConf
6	B	1	Total	Mg	0	0
			1	1		
6	A	1	Total	Mg	0	0
			1	1		
6	K	1	Total	Mg	0	0
			1	1		

- Molecule 7 is GUANOSINE-5'-DIPHOSPHATE (three-letter code: GDP) (formula: $C_{10}H_{15}N_5O_{11}P_2$).

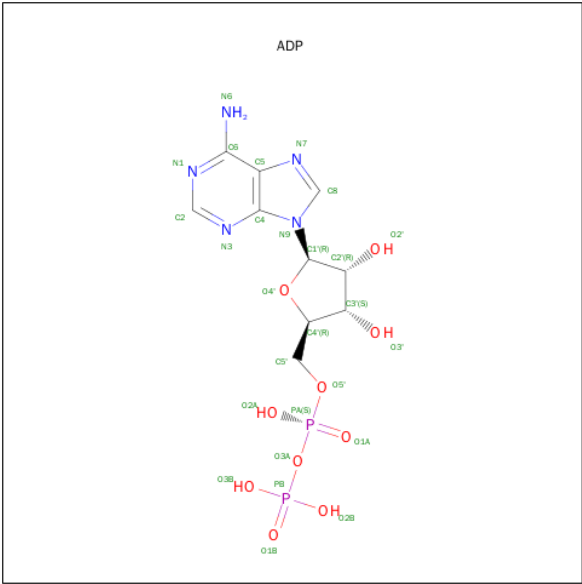


-
- Diagram illustrating the Lewis structure of the AlF_4^- ion. The central Aluminum (Al) atom is bonded to four Fluorine (F) atoms. The central Al atom has a negative charge. The bonds are labeled F1, F2, F3, and F4. The central Al atom is labeled AL.

Mol	Chain	Residues	Atoms			ZeroOcc	AltConf
8	B	1	Total 5	Al 1	F 4	0	0
8	K	1	Total 5	Al 1	F 4	0	0

- 
- WORLD WIDE
PDB
PROTEIN DATA BANK

C₁₀H₁₅N₅O₁₀P₂).



Mol	Chain	Residues	Atoms					ZeroOcc	AltConf
9	K	1	Total	C	N	O	P	0	0
			27	10	5	10	2		

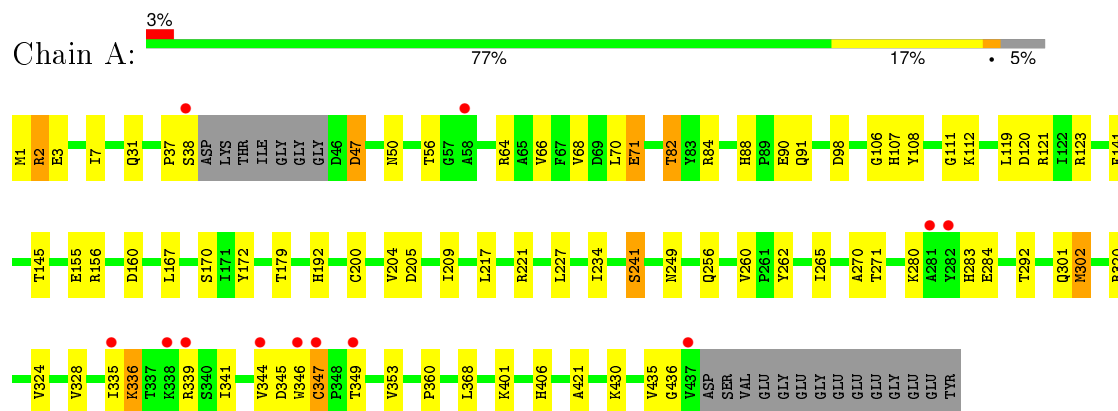
- Molecule 10 is water.

Mol	Chain	Residues	Atoms	ZeroOcc	AltConf
10	K	2	Total	O	0
			2	2	

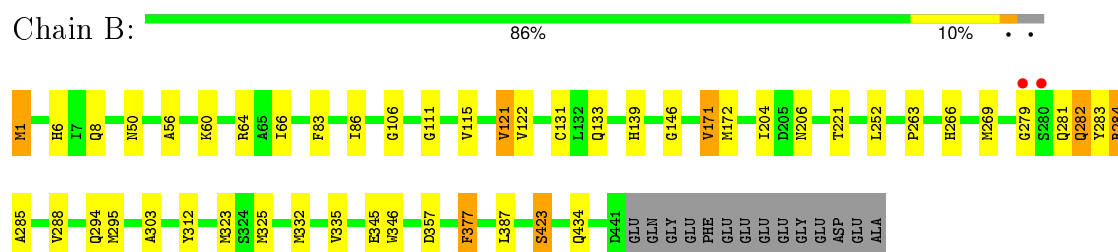
3 Residue-property plots [i](#)

These plots are drawn for all protein, RNA and DNA chains in the entry. The first graphic for a chain summarises the proportions of errors displayed in the second graphic. The second graphic shows the sequence view annotated by issues in geometry and electron density. Residues are color-coded according to the number of geometric quality criteria for which they contain at least one outlier: green = 0, yellow = 1, orange = 2 and red = 3 or more. A red dot above a residue indicates a poor fit to the electron density ($RSRZ > 2$). Stretches of 2 or more consecutive residues without any outlier are shown as a green connector. Residues present in the sample, but not in the model, are shown in grey.

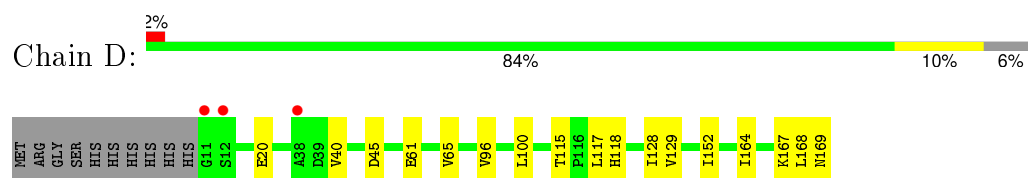
• Molecule 1: Tubulin alpha chain



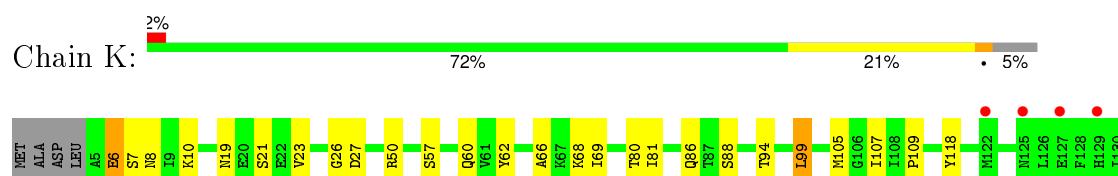
• Molecule 2: Tubulin beta chain

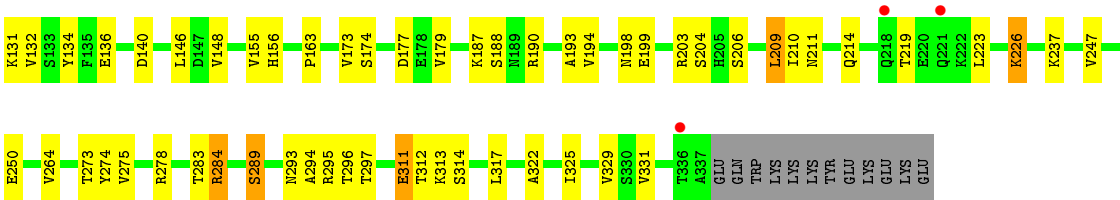


• Molecule 3: DESIGNED ANKYRIN REPEAT PROTEIN (DARPIN) D2



• Molecule 4: Kinesin-1 heavy chain





4 Data and refinement statistics

Property	Value	Source
Space group	P 21 21 21	Depositor
Cell constants a, b, c, α , β , γ	77.05Å 160.54Å 174.95Å 90.00° 90.00° 90.00°	Depositor
Resolution (Å)	59.14 – 3.19 59.14 – 3.19	Depositor EDS
% Data completeness (in resolution range)	80.2 (59.14-3.19) 80.4 (59.14-3.19)	Depositor EDS
R_{merge}	(Not available)	Depositor
R_{sym}	0.13	Depositor
$\langle I/\sigma(I) \rangle$ ¹	4.08 (at 3.19Å)	Xtriage
Refinement program	BUSTER 2.10.0	Depositor
R, R_{free}	0.177 , 0.211 0.199 , 0.223	Depositor DCC
R_{free} test set	1515 reflections (5.12%)	DCC
Wilson B-factor (Å ²)	62.5	Xtriage
Anisotropy	0.080	Xtriage
Bulk solvent k_{sol} (e/Å ³), B_{sol} (Å ²)	0.31 , 60.4	EDS
Estimated twinning fraction	No twinning to report.	Xtriage
L-test for twinning ²	$\langle L \rangle = 0.47$, $\langle L^2 \rangle = 0.30$	Xtriage
Outliers	2 of 29642 reflections (0.007%)	Xtriage
F_o, F_c correlation	0.89	EDS
Total number of atoms	10607	wwPDB-VP
Average B, all atoms (Å ²)	80.0	wwPDB-VP

Xtriage's analysis on translational NCS is as follows: *The largest off-origin peak in the Patterson function is 3.66% of the height of the origin peak. No significant pseudotranslation is detected.*

¹Intensities estimated from amplitudes.

²Theoretical values of $\langle |L| \rangle$, $\langle L^2 \rangle$ for acentric reflections are 0.5, 0.375 respectively for untwinned datasets, and 0.333, 0.2 for perfectly twinned datasets.

5 Model quality [i](#)

5.1 Standard geometry [i](#)

Bond lengths and bond angles in the following residue types are not validated in this section: GDP, ALF, MG, GTP, ADP

The Z score for a bond length (or angle) is the number of standard deviations the observed value is removed from the expected value. A bond length (or angle) with $|Z| > 5$ is considered an outlier worth inspection. RMSZ is the root-mean-square of all Z scores of the bond lengths (or angles).

Mol	Chain	Bond lengths		Bond angles	
		RMSZ	$\# Z > 5$	RMSZ	$\# Z > 5$
1	A	0.50	0/3424	0.74	1/4649 (0.0%)
2	B	0.47	0/3452	0.71	0/4676
3	D	0.49	0/1200	0.72	0/1626
4	K	0.53	0/2632	0.79	0/3551
All	All	0.49	0/10708	0.74	1/14502 (0.0%)

There are no bond length outliers.

All (1) bond angle outliers are listed below:

Mol	Chain	Res	Type	Atoms	Z	Observed(°)	Ideal(°)
1	A	82	THR	N-CA-C	-5.80	95.33	111.00

There are no chirality outliers.

There are no planarity outliers.

5.2 Too-close contacts [i](#)

In the following table, the Non-H and H(model) columns list the number of non-hydrogen atoms and hydrogen atoms in the chain respectively. The H(added) column lists the number of hydrogen atoms added and optimized by MolProbity. The Clashes column lists the number of clashes within the asymmetric unit, whereas Symm-Clashes lists symmetry related clashes.

Mol	Chain	Non-H	H(model)	H(added)	Clashes	Symm-Clashes
1	A	3349	0	3264	43	0
2	B	3378	0	3253	34	0
3	D	1185	0	1171	5	0
4	K	2593	0	2563	31	0
5	A	32	0	12	0	0
6	A	1	0	0	0	0

Continued on next page...

Continued from previous page...

Mol	Chain	Non-H	H(model)	H(added)	Clashes	Symm-Clashes
6	B	1	0	0	0	0
6	K	1	0	0	0	0
7	B	28	0	12	1	0
8	B	5	0	0	0	0
8	K	5	0	0	0	0
9	K	27	0	12	0	0
10	K	2	0	0	0	0
All	All	10607	0	10287	106	0

The all-atom clashscore is defined as the number of clashes found per 1000 atoms (including hydrogen atoms). The all-atom clashscore for this structure is 5.

The worst 5 of 106 close contacts within the same asymmetric unit are listed below, sorted by their clash magnitude.

Atom-1	Atom-2	Interatomic distance (Å)	Clash overlap (Å)
4:K:88:SER:HB3	4:K:198:ASN:HB2	1.61	0.83
1:A:221:ARG:HG2	2:B:325:MET:HB3	1.64	0.80
1:A:71:GLU:HB3	1:A:98:ASP:HB3	1.70	0.74
4:K:194:VAL:HG13	4:K:199:GLU:HA	1.71	0.72
2:B:281:GLN:HA	2:B:282:GLN:CB	2.20	0.71

There are no symmetry-related clashes.

5.3 Torsion angles [i](#)

5.3.1 Protein backbone [i](#)

In the following table, the Percentiles column shows the percent Ramachandran outliers of the chain as a percentile score with respect to all X-ray entries followed by that with respect to entries of similar resolution.

The Analysed column shows the number of residues for which the backbone conformation was analysed, and the total number of residues.

Mol	Chain	Analysed	Favoured	Allowed	Outliers	Percentiles
1	A	426/451 (94%)	406 (95%)	18 (4%)	2 (0%)	34 78
2	B	429/445 (96%)	416 (97%)	8 (2%)	5 (1%)	16 60
3	D	157/169 (93%)	155 (99%)	2 (1%)	0	100 100
4	K	331/349 (95%)	299 (90%)	23 (7%)	9 (3%)	6 39

Continued on next page...

Continued from previous page...

Mol	Chain	Analysed	Favoured	Allowed	Outliers	Percentiles
All	All	1343/1414 (95%)	1276 (95%)	51 (4%)	16 (1%)	16 60

5 of 16 Ramachandran outliers are listed below:

Mol	Chain	Res	Type
1	A	284	GLU
2	B	282	GLN
2	B	285	ALA
4	K	7	SER
4	K	27	ASP

5.3.2 Protein sidechains ⓘ

In the following table, the Percentiles column shows the percent sidechain outliers of the chain as a percentile score with respect to all X-ray entries followed by that with respect to entries of similar resolution.

The Analysed column shows the number of residues for which the sidechain conformation was analysed, and the total number of residues.

Mol	Chain	Analysed	Rotameric	Outliers	Percentiles
1	A	359/379 (95%)	337 (94%)	22 (6%)	23 64
2	B	370/383 (97%)	360 (97%)	10 (3%)	52 85
3	D	121/131 (92%)	113 (93%)	8 (7%)	21 61
4	K	291/309 (94%)	262 (90%)	29 (10%)	9 37
All	All	1141/1202 (95%)	1072 (94%)	69 (6%)	24 65

5 of 69 residues with a non-rotameric sidechain are listed below:

Mol	Chain	Res	Type
2	B	423	SER
3	D	168	LEU
4	K	311	GLU
3	D	40	VAL
3	D	115	THR

Some sidechains can be flipped to improve hydrogen bonding and reduce clashes. 5 of 30 such sidechains are listed below:

Mol	Chain	Res	Type
2	B	136	GLN
2	B	266	HIS
4	K	218	GLN
2	B	206	ASN
2	B	294	GLN

5.3.3 RNA [i](#)

There are no RNA molecules in this entry.

5.4 Non-standard residues in protein, DNA, RNA chains [i](#)

There are no non-standard protein/DNA/RNA residues in this entry.

5.5 Carbohydrates [i](#)

There are no carbohydrates in this entry.

5.6 Ligand geometry [i](#)

Of 8 ligands modelled in this entry, 3 are monoatomic - leaving 5 for Mogul analysis.

In the following table, the Counts columns list the number of bonds (or angles) for which Mogul statistics could be retrieved, the number of bonds (or angles) that are observed in the model and the number of bonds (or angles) that are defined in the chemical component dictionary. The Link column lists molecule types, if any, to which the group is linked. The Z score for a bond length (or angle) is the number of standard deviations the observed value is removed from the expected value. A bond length (or angle) with $|Z| > 2$ is considered an outlier worth inspection. RMSZ is the root-mean-square of all Z scores of the bond lengths (or angles).

Mol	Type	Chain	Res	Link	Bond lengths			Bond angles		
					Counts	RMSZ	$\# Z > 2$	Counts	RMSZ	$\# Z > 2$
5	GTP	A	600	6	25,34,34	1.08	2 (8%)	34,54,54	1.95	4 (11%)
7	GDP	B	501	8,6	23,30,30	1.04	2 (8%)	30,47,47	2.15	4 (13%)
8	ALF	B	503	7,6	0,4,4	0.00	-	0,6,6	0.00	-
9	ADP	K	401	8,6	22,29,29	0.64	0	27,45,45	0.86	1 (3%)
8	ALF	K	403	9,6	0,4,4	0.00	-	0,6,6	0.00	-

In the following table, the Chirals column lists the number of chiral outliers, the number of chiral centers analysed, the number of these observed in the model and the number defined in the chemical component dictionary. Similar counts are reported in the Torsion and Rings columns. '-' means

no outliers of that kind were identified.

Mol	Type	Chain	Res	Link	Chirals	Torsions	Rings
5	GTP	A	600	6	-	0/18/38/38	0/3/3/3
7	GDP	B	501	8,6	-	0/12/32/32	0/3/3/3
8	ALF	B	503	7,6	-	0/0/0/0	0/0/0/0
9	ADP	K	401	8,6	-	0/12/32/32	0/3/3/3
8	ALF	K	403	9,6	-	0/0/0/0	0/0/0/0

All (4) bond length outliers are listed below:

Mol	Chain	Res	Type	Atoms	Z	Observed(Å)	Ideal(Å)
5	A	600	GTP	C6-C5	2.74	1.46	1.41
7	B	501	GDP	C6-C5	2.79	1.46	1.41
7	B	501	GDP	C6-N1	2.94	1.38	1.33
5	A	600	GTP	C6-N1	3.10	1.38	1.33

The worst 5 of 9 bond angle outliers are listed below:

Mol	Chain	Res	Type	Atoms	Z	Observed(°)	Ideal(°)
5	A	600	GTP	C5-C6-N1	-7.86	112.84	123.59
7	B	501	GDP	C5-C6-N1	-7.79	112.94	123.59
7	B	501	GDP	C6-C5-C4	-2.88	117.46	120.90
5	A	600	GTP	C6-C5-C4	-2.70	117.67	120.90
7	B	501	GDP	N3-C2-N1	-2.66	123.39	127.44

There are no chirality outliers.

There are no torsion outliers.

There are no ring outliers.

1 monomer is involved in 1 short contact:

Mol	Chain	Res	Type	Clashes	Symm-Clashes
7	B	501	GDP	1	0

5.7 Other polymers [i](#)

There are no such residues in this entry.

5.8 Polymer linkage issues [i](#)

There are no chain breaks in this entry.

6 Fit of model and data [i](#)

6.1 Protein, DNA and RNA chains [i](#)

In the following table, the column labelled ‘#RSRZ> 2’ contains the number (and percentage) of RSRZ outliers, followed by percent RSRZ outliers for the chain as percentile scores relative to all X-ray entries and entries of similar resolution. The OWAB column contains the minimum, median, 95th percentile and maximum values of the occupancy-weighted average B-factor per residue. The column labelled ‘Q< 0.9’ lists the number of (and percentage) of residues with an average occupancy less than 0.9.

Mol	Chain	Analysed	<RSRZ>	#RSRZ>2	OWAB(Å ²)	Q<0.9
1	A	430/451 (95%)	0.06	12 (2%) 56 42	45, 87, 139, 161	0
2	B	431/445 (96%)	-0.00	2 (0%) 91 87	42, 71, 117, 154	0
3	D	159/169 (94%)	0.11	3 (1%) 70 55	45, 75, 114, 158	0
4	K	333/349 (95%)	-0.02	7 (2%) 67 52	44, 70, 118, 144	0
All	All	1353/1414 (95%)	0.03	24 (1%) 71 58	42, 75, 127, 161	0

The worst 5 of 24 RSRZ outliers are listed below:

Mol	Chain	Res	Type	RSRZ
3	D	11	GLY	7.2
1	A	346	TRP	4.1
1	A	281	ALA	4.0
3	D	12	SER	3.5
2	B	279	GLY	3.0

6.2 Non-standard residues in protein, DNA, RNA chains [i](#)

There are no non-standard protein/DNA/RNA residues in this entry.

6.3 Carbohydrates [i](#)

There are no carbohydrates in this entry.

6.4 Ligands [i](#)

In the following table, the Atoms column lists the number of modelled atoms in the group and the number defined in the chemical component dictionary. LLDF column lists the quality of electron density of the group with respect to its neighbouring residues in protein, DNA or RNA chains. The B-factors column lists the minimum, median, 95th percentile and maximum values of B factors

of atoms in the group. The column labelled 'Q< 0.9' lists the number of atoms with occupancy less than 0.9.

Mol	Type	Chain	Res	Atoms	RSCC	RSR	LLDF	B-factors(\AA^2)	Q<0.9
5	GTP	A	600	32/32	0.96	0.20	-0.08	51,63,70,74	0
8	ALF	K	403	5/5	0.99	0.21	-0.11	50,51,54,55	0
9	ADP	K	401	27/27	0.97	0.20	-0.40	55,60,65,69	0
7	GDP	B	501	28/28	0.96	0.17	-0.84	64,71,79,85	0
8	ALF	B	503	5/5	0.96	0.12	-2.04	86,93,98,99	0
6	MG	K	402	1/1	0.98	0.13	-3.44	27,27,27,27	0
6	MG	B	502	1/1	0.96	0.09	-	55,55,55,55	0
6	MG	A	601	1/1	0.91	0.27	-	28,28,28,28	0

6.5 Other polymers [i](#)

There are no such residues in this entry.