



Full wwPDB X-ray Structure Validation Report ⓘ

Jan 31, 2016 – 07:52 PM GMT

PDB ID : 1HOX
Title : CRYSTAL STRUCTURE OF RABBIT PHOSPHOGLUCOSE ISOMERASE
COMPLEXED WITH FRUCTOSE-6-PHOSPHATE
Authors : Jeffrey, C.J.; Lee, J.H.; Chang, K.Z.; Patel, V.
Deposited on : 2000-12-11
Resolution : 2.10 Å(reported)

This is a Full wwPDB X-ray Structure Validation Report for a publicly released PDB entry.
We welcome your comments at validation@mail.wwpdb.org
A user guide is available at
<http://wwpdb.org/validation/2016/XrayValidationReportHelp>
with specific help available everywhere you see the ⓘ symbol.

The following versions of software and data (see [references ⓘ](#)) were used in the production of this report:

MolProbity : 4.02b-467
Mogul : 1.7 (RC4), CSD as536be (2015)
Xtriage (Phenix) : **NOT EXECUTED**
EDS : **NOT EXECUTED**
Percentile statistics : 20151230.v01 (using entries in the PDB archive December 30th 2015)
Ideal geometry (proteins) : Engh & Huber (2001)
Ideal geometry (DNA, RNA) : Parkinson et al. (1996)
Validation Pipeline (wwPDB-VP) : trunk26865

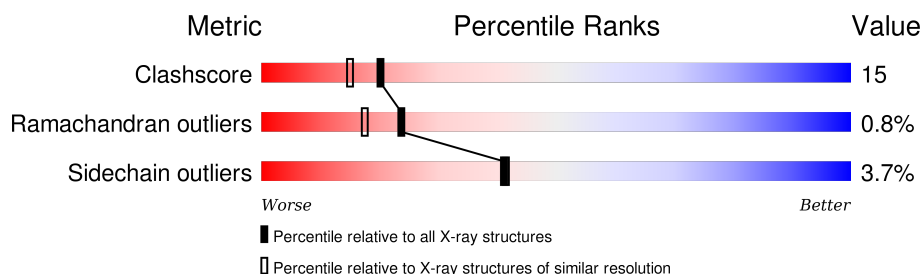
1 Overall quality at a glance

The following experimental techniques were used to determine the structure:

X-RAY DIFFRACTION

The reported resolution of this entry is 2.10 Å.

Percentile scores (ranging between 0-100) for global validation metrics of the entry are shown in the following graphic. The table shows the number of entries on which the scores are based.



Metric	Whole archive (#Entries)	Similar resolution (#Entries, resolution range(Å))
Clashscore	102246	4460 (2.10-2.10)
Ramachandran outliers	100387	4413 (2.10-2.10)
Sidechain outliers	100360	4414 (2.10-2.10)

The table below summarises the geometric issues observed across the polymeric chains and their fit to the electron density. The red, orange, yellow and green segments on the lower bar indicate the fraction of residues that contain outliers for ≥ 3 , 2, 1 and 0 types of geometric quality criteria. A grey segment represents the fraction of residues that are not modelled. The numeric value for each fraction is indicated below the corresponding segment, with a dot representing fractions $\leq 5\%$. The upper red bar (where present) indicates the fraction of residues that have poor fit to the electron density. The numeric value is given above the bar.

Note EDS was not executed.

Mol	Chain	Length	Quality of chain
1	A	558	 72% 24% . .
1	B	558	 75% 24% ..

2 Entry composition [i](#)

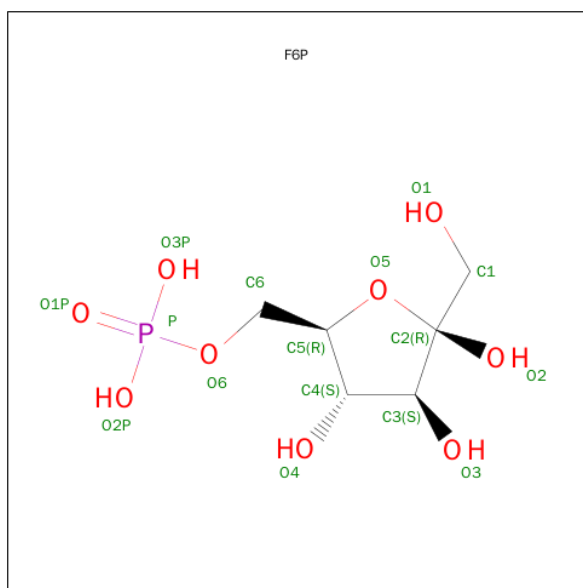
There are 3 unique types of molecules in this entry. The entry contains 9690 atoms, of which 0 are hydrogens and 0 are deuteriums.

In the tables below, the ZeroOcc column contains the number of atoms modelled with zero occupancy, the AltConf column contains the number of residues with at least one atom in alternate conformation and the Trace column contains the number of residues modelled with at most 2 atoms.

- Molecule 1 is a protein called PHOSPHOGLUCOSE ISOMERASE.

Mol	Chain	Residues	Atoms					ZeroOcc	AltConf	Trace
1	A	555	Total	C	N	O	S	0	0	0
			4395	2805	765	806	19			
1	B	555	Total	C	N	O	S	0	0	0
			4395	2805	765	806	19			

- Molecule 2 is SUGAR (FRUCTOSE-6-PHOSPHATE) (three-letter code: F6P) (formula: $C_6H_{13}O_9P$).



Mol	Chain	Residues	Atoms				ZeroOcc	AltConf
2	A	1	Total	C	O	P	0	0
			16	6	9	1		
2	B	1	Total	C	O	P	0	0
			16	6	9	1		

- Molecule 3 is water.

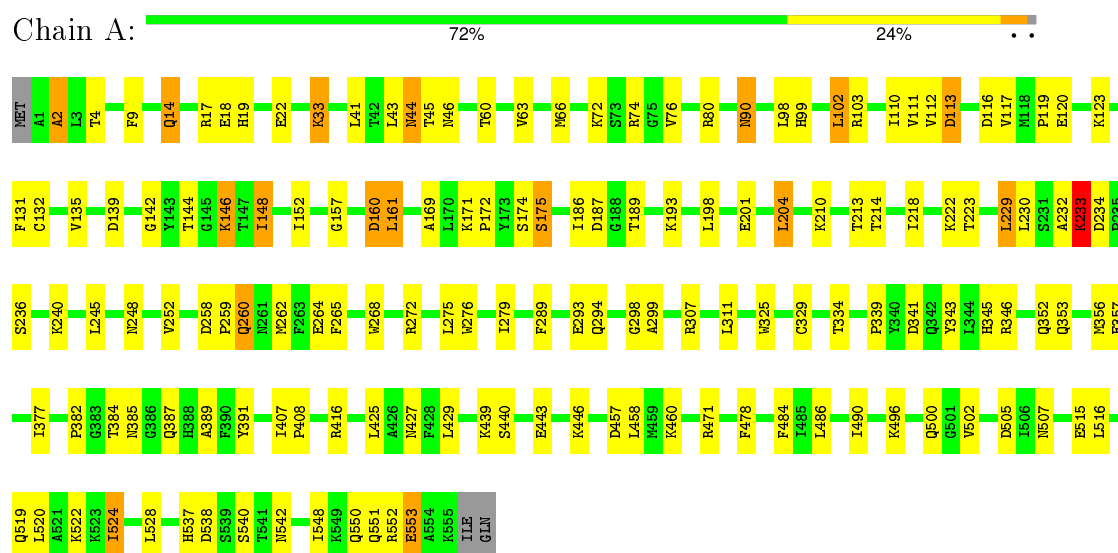
Mol	Chain	Residues	Atoms		ZeroOcc	AltConf
3	A	424	Total 424	O 424	0	0
3	B	444	Total 444	O 444	0	0

3 Residue-property plots

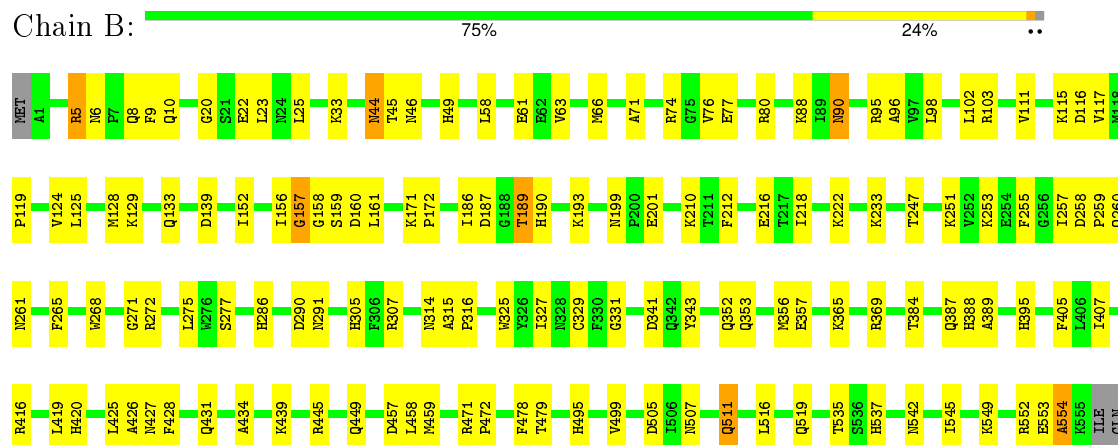
These plots are drawn for all protein, RNA and DNA chains in the entry. The first graphic for a chain summarises the proportions of errors displayed in the second graphic. The second graphic shows the sequence view annotated by issues in geometry and electron density. Residues are color-coded according to the number of geometric quality criteria for which they contain at least one outlier: green = 0, yellow = 1, orange = 2 and red = 3 or more. A red dot above a residue indicates a poor fit to the electron density ($RSRZ > 2$). Stretches of 2 or more consecutive residues without any outlier are shown as a green connector. Residues present in the sample, but not in the model, are shown in grey.

Note EDS was not executed.

• Molecule 1: PHOSPHOGLUCOSE ISOMERASE



• Molecule 1: PHOSPHOGLUCOSE ISOMERASE



4 Data and refinement statistics

Xtriage (Phenix) and EDS were not executed - this section will therefore be incomplete.

Property	Value	Source
Space group	C 2 2 21	Depositor
Cell constants a, b, c, α , β , γ	82.44Å 119.43Å 272.14Å 90.00° 90.00° 90.00°	Depositor
Resolution (Å)	30.00 – 2.10	Depositor
% Data completeness (in resolution range)	93.1 (30.00-2.10)	Depositor
R_{merge}	0.05	Depositor
R_{sym}	0.05	Depositor
Refinement program	CNS	Depositor
R, R_{free}	0.217 , 0.248	Depositor
Estimated twinning fraction	No twinning to report.	Xtriage
Total number of atoms	9690	wwPDB-VP
Average B, all atoms (Å ²)	34.0	wwPDB-VP

5 Model quality

5.1 Standard geometry

Bond lengths and bond angles in the following residue types are not validated in this section: F6P

The Z score for a bond length (or angle) is the number of standard deviations the observed value is removed from the expected value. A bond length (or angle) with $|Z| > 5$ is considered an outlier worth inspection. RMSZ is the root-mean-square of all Z scores of the bond lengths (or angles).

Mol	Chain	Bond lengths		Bond angles	
		RMSZ	# Z >5	RMSZ	# Z >5
1	A	0.41	0/4504	0.62	0/6101
1	B	0.40	0/4504	0.62	0/6101
All	All	0.40	0/9008	0.62	0/12202

There are no bond length outliers.

There are no bond angle outliers.

There are no chirality outliers.

There are no planarity outliers.

5.2 Too-close contacts

In the following table, the Non-H and H(model) columns list the number of non-hydrogen atoms and hydrogen atoms in the chain respectively. The H(added) column lists the number of hydrogen atoms added and optimized by MolProbity. The Clashes column lists the number of clashes within the asymmetric unit, whereas Symm-Clashes lists symmetry related clashes.

Mol	Chain	Non-H	H(model)	H(added)	Clashes	Symm-Clashes
1	A	4395	0	4352	144	0
1	B	4395	0	4352	127	0
2	A	16	0	11	2	0
2	B	16	0	11	3	0
3	A	424	0	0	20	0
3	B	444	0	0	10	0
All	All	9690	0	8726	257	0

The all-atom clashscore is defined as the number of clashes found per 1000 atoms (including hydrogen atoms). The all-atom clashscore for this structure is 15.

All (257) close contacts within the same asymmetric unit are listed below, sorted by their clash

magnitude.

Atom-1	Atom-2	Interatomic distance (Å)	Clash overlap (Å)
1:A:33:LYS:H	1:A:33:LYS:HE3	1.08	1.09
1:B:157:GLY:HA3	2:B:1002:F6P:H5	1.36	1.06
1:A:146:LYS:HE2	1:A:146:LYS:H	1.21	1.02
1:A:146:LYS:CE	1:A:146:LYS:H	1.74	0.99
1:A:33:LYS:N	1:A:33:LYS:HE3	1.82	0.93
1:A:387:GLN:HE22	1:A:427:ASN:HB3	1.36	0.89
1:B:305:HIS:HE1	1:B:315:ALA:H	1.23	0.86
1:A:14:GLN:HE21	1:A:14:GLN:HA	1.43	0.83
1:B:90:ASN:ND2	1:B:507:ASN:HD21	1.77	0.82
1:A:537:HIS:H	1:A:542:ASN:HD21	1.25	0.82
1:A:144:THR:H	1:A:146:LYS:HZ1	1.25	0.81
1:A:144:THR:OG1	1:A:146:LYS:HD3	1.82	0.80
1:B:156:ILE:HG23	1:B:157:GLY:H	1.47	0.80
1:A:144:THR:H	1:A:146:LYS:NZ	1.79	0.80
1:A:160:ASP:O	1:A:161:LEU:HB2	1.81	0.77
1:A:519:GLN:HE22	1:B:439:LYS:NZ	1.83	0.75
1:A:352:GLN:O	1:A:356:MET:HB2	1.86	0.74
1:B:384:THR:O	1:B:387:GLN:HB2	1.87	0.74
1:A:519:GLN:HE22	1:B:439:LYS:HZ1	1.36	0.70
1:B:156:ILE:HG23	1:B:157:GLY:N	2.05	0.70
1:A:14:GLN:NE2	1:A:14:GLN:HA	2.06	0.70
1:B:6:ASN:HD21	1:B:8:GLN:HB2	1.57	0.69
1:B:387:GLN:HE22	1:B:427:ASN:HB3	1.58	0.69
1:B:25:LEU:HD21	1:B:58:LEU:HD12	1.74	0.69
1:A:384:THR:O	1:A:387:GLN:HB2	1.93	0.68
1:A:14:GLN:CA	1:A:14:GLN:HE21	2.03	0.68
2:A:1001:F6P:O1	1:B:388:HIS:HA	1.93	0.68
1:B:33:LYS:HA	1:B:33:LYS:HE3	1.76	0.68
1:A:440:SER:OG	1:A:443:GLU:HG3	1.94	0.67
1:B:74:ARG:HA	1:B:74:ARG:HH11	1.61	0.66
1:B:171:LYS:HD3	1:B:286:HIS:HE1	1.61	0.66
1:B:125:LEU:HD23	1:B:128:MET:HE1	1.78	0.65
1:A:439:LYS:NZ	1:B:519:GLN:HE22	1.94	0.65
1:B:445:ARG:O	1:B:449:GLN:HG3	1.98	0.64
1:B:537:HIS:H	1:B:542:ASN:HD21	1.44	0.64
1:B:189:THR:HG21	3:B:1004:HOH:O	1.98	0.64
1:B:218:ILE:HG22	1:B:222:LYS:HE3	1.79	0.63
1:A:44:ASN:ND2	1:A:46:ASN:H	1.97	0.63
1:B:395:HIS:HD2	3:B:1090:HOH:O	1.81	0.63
1:A:123:LYS:HD2	3:A:1398:HOH:O	1.99	0.63
1:A:232:ALA:O	1:A:234:ASP:N	2.29	0.63

Continued on next page...

Continued from previous page...

Atom-1	Atom-2	Interatomic distance (Å)	Clash overlap (Å)
1:B:352:GLN:O	1:B:356:MET:HB2	1.99	0.62
1:B:58:LEU:HD13	1:B:472:PRO:HB3	1.81	0.62
1:B:77:GLU:HG3	3:B:1336:HOH:O	1.99	0.62
1:A:218:ILE:HG22	1:A:222:LYS:HE2	1.82	0.61
1:A:294:GLN:HG2	3:A:1139:HOH:O	1.99	0.61
1:B:129:LYS:O	1:B:133:GLN:HG3	2.01	0.61
1:B:6:ASN:ND2	1:B:8:GLN:H	1.98	0.61
1:A:233:LYS:NZ	1:A:233:LYS:HB3	2.16	0.61
1:A:175:SER:HB3	3:A:1132:HOH:O	2.00	0.61
1:B:157:GLY:CA	2:B:1002:F6P:H5	2.23	0.60
1:A:45:THR:O	1:A:46:ASN:HB2	2.01	0.60
1:A:160:ASP:O	1:A:161:LEU:CB	2.50	0.60
3:A:1019:HOH:O	1:B:49:HIS:HD2	1.85	0.60
1:B:44:ASN:ND2	1:B:46:ASN:H	2.00	0.60
1:A:341:ASP:OD2	1:A:343:TYR:HB2	2.01	0.60
1:A:439:LYS:HZ3	1:B:519:GLN:HE22	1.49	0.60
1:B:95:ARG:HD2	3:B:1397:HOH:O	2.01	0.60
1:B:407:ILE:HD13	1:B:425:LEU:HD23	1.83	0.59
1:B:305:HIS:CE1	1:B:315:ALA:H	2.13	0.59
1:A:515:GLU:O	1:A:519:GLN:HG3	2.02	0.59
1:A:90:ASN:ND2	1:A:507:ASN:HD21	2.01	0.59
1:B:33:LYS:HE2	3:B:1060:HOH:O	2.02	0.59
1:A:98:LEU:HB2	1:A:268:TRP:CE3	2.37	0.59
1:B:63:VAL:HA	1:B:66:MET:HE2	1.84	0.58
1:A:457:ASP:O	1:A:460:LYS:HG2	2.02	0.58
1:B:45:THR:O	1:B:46:ASN:HB2	2.04	0.58
1:A:189:THR:O	1:A:193:LYS:HG2	2.04	0.58
1:A:240:LYS:HE2	3:A:1169:HOH:O	2.03	0.58
1:A:33:LYS:CE	1:A:33:LYS:H	1.99	0.57
1:B:445:ARG:HH11	1:B:445:ARG:HG2	1.67	0.57
1:B:158:GLY:HA3	1:B:271:GLY:O	2.03	0.57
1:B:156:ILE:O	1:B:160:ASP:HB3	2.04	0.57
1:B:253:LYS:HD3	1:B:253:LYS:O	2.04	0.57
1:A:146:LYS:CD	1:A:201:GLU:HB3	2.34	0.56
1:A:213:THR:O	1:A:214:THR:C	2.43	0.56
1:A:232:ALA:O	1:A:233:LYS:HG2	2.06	0.56
1:B:156:ILE:CG2	1:B:157:GLY:H	2.18	0.56
1:B:111:VAL:HG23	1:B:115:LYS:N	2.21	0.56
1:A:232:ALA:C	1:A:233:LYS:HG2	2.27	0.55
1:B:258:ASP:CG	1:B:260:GLN:HG2	2.27	0.55
1:A:113:ASP:O	1:A:113:ASP:OD1	2.25	0.55

Continued on next page...

Continued from previous page...

Atom-1	Atom-2	Interatomic distance (Å)	Clash overlap (Å)
1:A:135:VAL:HG13	1:A:148:ILE:HG12	1.88	0.55
1:A:116:ASP:O	1:A:119:PRO:HD2	2.07	0.55
1:A:522:LYS:HE2	3:A:1290:HOH:O	2.07	0.55
1:B:537:HIS:HB2	1:B:542:ASN:ND2	2.22	0.55
1:B:6:ASN:HD22	1:B:9:PHE:H	1.55	0.55
1:A:41:LEU:O	1:A:41:LEU:HD12	2.07	0.54
1:B:255:PHE:HD2	1:B:257:ILE:HG13	1.72	0.54
1:B:369:ARG:HH11	1:B:369:ARG:HG2	1.72	0.54
1:B:272:ARG:HH12	1:B:511:GLN:HE21	1.56	0.54
1:A:146:LYS:CE	1:A:146:LYS:N	2.57	0.54
1:B:6:ASN:O	1:B:10:GLN:HG3	2.08	0.54
1:A:223:THR:OG1	1:B:420:HIS:HE1	1.90	0.54
1:A:524:ILE:HD11	1:B:426:ALA:HA	1.89	0.54
1:A:516:LEU:HA	1:A:519:GLN:HE21	1.72	0.54
1:A:524:ILE:HD12	1:A:528:LEU:HG	1.90	0.54
1:B:33:LYS:HG3	3:B:1060:HOH:O	2.07	0.54
1:A:152:ILE:N	1:A:152:ILE:HD12	2.23	0.54
1:A:262:MET:CE	1:A:264:GLU:HB3	2.38	0.53
1:A:260:GLN:HE21	1:A:260:GLN:HA	1.73	0.53
1:A:384:THR:O	1:A:387:GLN:N	2.41	0.53
1:B:218:ILE:CG2	1:B:222:LYS:HE3	2.39	0.53
1:B:6:ASN:ND2	1:B:8:GLN:HB2	2.22	0.53
1:A:223:THR:OG1	1:B:416:ARG:NH1	2.41	0.53
1:B:251:LYS:HA	1:B:251:LYS:HE2	1.89	0.53
1:A:174:SER:O	1:A:175:SER:C	2.46	0.53
1:A:233:LYS:HB3	1:A:233:LYS:HZ2	1.74	0.52
1:A:258:ASP:N	1:A:258:ASP:OD2	2.38	0.52
1:A:112:VAL:O	1:A:113:ASP:C	2.47	0.52
1:B:157:GLY:C	1:B:159:SER:H	2.13	0.52
1:B:458:LEU:HD23	1:B:458:LEU:C	2.30	0.52
1:A:63:VAL:HA	1:A:66:MET:HE3	1.92	0.52
1:A:80:ARG:HD2	1:A:307:ARG:HA	1.91	0.52
1:A:289:PHE:O	1:A:293:GLU:HG3	2.09	0.52
1:A:146:LYS:HE2	1:A:146:LYS:N	2.05	0.52
1:A:548:ILE:HD13	1:B:425:LEU:HD22	1.93	0.51
1:B:90:ASN:HD22	1:B:90:ASN:C	2.13	0.51
1:B:535:THR:HG22	3:B:1209:HOH:O	2.10	0.51
1:A:74:ARG:NH2	1:A:505:ASP:HB2	2.26	0.51
1:B:549:LYS:HG2	1:B:552:ARG:NH2	2.26	0.51
1:A:387:GLN:HA	1:A:391:TYR:CG	2.46	0.51
1:A:294:GLN:HG3	1:A:484:PHE:HB2	1.93	0.51

Continued on next page...

Continued from previous page...

Atom-1	Atom-2	Interatomic distance (Å)	Clash overlap (Å)
1:A:519:GLN:NE2	1:B:439:LYS:HZ1	2.07	0.50
1:B:5:ARG:HG2	3:B:1349:HOH:O	2.11	0.50
1:A:248:ASN:O	1:A:252:VAL:HG23	2.11	0.50
1:B:305:HIS:HE1	1:B:315:ALA:N	2.01	0.50
1:B:125:LEU:HA	1:B:128:MET:HE3	1.92	0.50
1:A:275:LEU:HD12	1:A:275:LEU:C	2.31	0.50
1:A:74:ARG:HH21	1:A:505:ASP:HB2	1.76	0.50
1:B:189:THR:O	1:B:193:LYS:HG2	2.12	0.50
1:A:41:LEU:HD13	1:A:43:LEU:HD21	1.92	0.50
1:A:446:LYS:HD3	3:A:1287:HOH:O	2.12	0.50
1:A:161:LEU:HD23	1:A:353:GLN:HE21	1.76	0.50
1:A:446:LYS:HG2	3:A:1332:HOH:O	2.10	0.49
1:A:131:PHE:HZ	1:A:204:LEU:HD11	1.77	0.49
1:A:2:ALA:HB2	3:A:1190:HOH:O	2.12	0.49
1:A:325:TRP:O	1:A:329:CYS:HB2	2.13	0.49
1:B:395:HIS:HE1	1:B:431:GLN:OE1	1.95	0.49
1:A:245:LEU:HD13	1:A:279:ILE:HA	1.94	0.49
1:A:552:ARG:HD2	3:A:1198:HOH:O	2.13	0.49
1:B:88:LYS:HA	1:B:96:ALA:HA	1.95	0.48
1:A:171:LYS:N	1:A:172:PRO:CD	2.76	0.48
1:A:429:LEU:HD13	1:B:545:ILE:HG12	1.96	0.48
1:B:405:PHE:HB3	1:B:428:PHE:CE1	2.48	0.48
1:B:258:ASP:OD2	1:B:259:PRO:HD2	2.14	0.48
1:A:157:GLY:O	1:A:160:ASP:O	2.32	0.48
1:B:6:ASN:ND2	1:B:8:GLN:N	2.62	0.48
1:A:407:ILE:HD13	1:A:425:LEU:HD23	1.95	0.48
1:A:520:LEU:HD12	1:B:434:ALA:HB2	1.95	0.48
1:A:550:GLN:O	1:A:553:GLU:OE2	2.32	0.48
1:B:258:ASP:OD2	1:B:260:GLN:HG2	2.14	0.48
1:B:152:ILE:N	1:B:152:ILE:HD12	2.29	0.47
1:A:259:PRO:HG2	3:A:1248:HOH:O	2.13	0.47
1:B:471:ARG:HH11	1:B:471:ARG:HG3	1.80	0.47
1:A:334:THR:HG22	1:A:377:ILE:HB	1.96	0.47
1:B:125:LEU:HD23	1:B:128:MET:CE	2.44	0.47
1:B:341:ASP:OD2	1:B:343:TYR:HB2	2.13	0.47
1:B:156:ILE:CG2	1:B:157:GLY:N	2.73	0.47
1:A:262:MET:HE2	1:A:264:GLU:HB3	1.96	0.47
1:A:18:GLU:OE1	1:A:19:HIS:NE2	2.48	0.47
1:A:458:LEU:HD23	1:A:458:LEU:C	2.35	0.47
1:B:445:ARG:HG2	1:B:445:ARG:NH1	2.30	0.47
1:B:116:ASP:OD2	1:B:119:PRO:HD3	2.15	0.47

Continued on next page...

Continued from previous page...

Atom-1	Atom-2	Interatomic distance (Å)	Clash overlap (Å)
1:A:146:LYS:HD2	1:A:201:GLU:HB3	1.97	0.46
1:B:272:ARG:HH12	1:B:511:GLN:NE2	2.12	0.46
1:B:516:LEU:HA	1:B:519:GLN:HE21	1.81	0.46
3:A:1091:HOH:O	1:B:537:HIS:HE1	1.98	0.46
1:B:449:GLN:HG2	1:B:458:LEU:CD1	2.45	0.46
1:B:253:LYS:HD3	1:B:253:LYS:C	2.36	0.46
1:B:74:ARG:NH1	1:B:74:ARG:HA	2.29	0.46
1:B:210:LYS:HA	1:B:265:PHE:CZ	2.51	0.46
1:A:446:LYS:HE3	3:A:1291:HOH:O	2.16	0.46
1:B:71:ALA:O	1:B:76:VAL:HG23	2.15	0.46
1:A:460:LYS:HE3	3:A:1347:HOH:O	2.16	0.46
1:A:99:HIS:HA	1:A:102:LEU:HD22	1.97	0.46
1:B:365:LYS:HG3	1:B:505:ASP:O	2.15	0.46
1:A:357:GLU:HB2	1:B:389:ALA:O	2.16	0.46
1:A:144:THR:OG1	1:A:146:LYS:CD	2.61	0.46
1:A:169:ALA:HA	1:A:343:TYR:HB3	1.98	0.46
1:B:187:ASP:OD2	1:B:189:THR:HG23	2.16	0.45
1:B:90:ASN:HD22	1:B:507:ASN:HD21	1.60	0.45
1:A:234:ASP:OD2	1:A:236:SER:OG	2.33	0.45
1:B:247:THR:HG22	1:B:265:PHE:O	2.17	0.45
1:A:146:LYS:HD3	1:A:201:GLU:HB3	1.99	0.45
1:B:190:HIS:O	1:B:193:LYS:HG2	2.16	0.45
1:A:19:HIS:O	1:A:22:GLU:HB2	2.16	0.45
1:B:275:LEU:HD12	1:B:275:LEU:C	2.36	0.45
1:A:60:THR:HG22	3:A:1294:HOH:O	2.17	0.45
1:B:98:LEU:HB2	1:B:268:TRP:CE3	2.51	0.45
1:A:41:LEU:HD12	1:A:41:LEU:C	2.36	0.45
1:B:258:ASP:OD1	1:B:260:GLN:HG2	2.16	0.45
1:A:229:LEU:HA	1:A:229:LEU:HD12	1.84	0.44
1:B:139:ASP:OD2	1:B:139:ASP:C	2.55	0.44
1:A:148:ILE:HD12	1:A:148:ILE:C	2.38	0.44
1:A:161:LEU:HD12	1:A:161:LEU:HA	1.91	0.44
1:B:186:ILE:HB	1:B:216:GLU:HG3	2.00	0.44
1:A:272:ARG:HG2	3:A:1092:HOH:O	2.18	0.44
1:A:389:ALA:O	1:B:353:GLN:HA	2.18	0.44
1:A:294:GLN:HG2	3:A:1186:HOH:O	2.17	0.44
1:A:551:GLN:NE2	1:B:479:THR:OG1	2.51	0.44
1:A:139:ASP:C	1:A:139:ASP:OD2	2.55	0.44
1:B:61:GLU:HG2	3:B:1258:HOH:O	2.17	0.44
1:B:157:GLY:C	1:B:159:SER:N	2.71	0.44
1:A:382:PRO:O	1:A:385:ASN:HB2	2.17	0.44

Continued on next page...

Continued from previous page...

Atom-1	Atom-2	Interatomic distance (Å)	Clash overlap (Å)
1:B:258:ASP:HB3	1:B:261:ASN:ND2	2.33	0.43
1:A:142:GLY:C	1:A:146:LYS:HZ1	2.21	0.43
1:A:14:GLN:HE22	1:A:17:ARG:HD2	1.84	0.43
1:A:74:ARG:HA	1:A:74:ARG:HH11	1.83	0.43
1:B:325:TRP:O	1:B:329:CYS:HB2	2.18	0.43
1:A:102:LEU:HD23	1:A:276:TRP:HB2	1.99	0.43
1:A:146:LYS:HE3	1:A:146:LYS:H	1.71	0.43
1:A:76:VAL:HA	1:A:502:VAL:HG11	2.01	0.43
1:B:272:ARG:NH1	1:B:357:GLU:HG2	2.32	0.43
1:A:230:LEU:HD23	1:A:230:LEU:C	2.39	0.43
1:B:49:HIS:H	1:B:479:THR:HG1	1.67	0.43
1:A:117:VAL:O	1:A:120:GLU:HG2	2.19	0.43
1:A:210:LYS:N	2:A:1001:F6P:O1P	2.37	0.42
1:A:440:SER:HG	1:A:443:GLU:HG3	1.82	0.42
1:A:72:LYS:HE2	1:A:311:LEU:HD12	2.01	0.42
1:B:471:ARG:HA	1:B:472:PRO:HD2	1.85	0.42
1:A:346:ARG:HD3	3:A:1187:HOH:O	2.18	0.42
1:A:537:HIS:N	1:A:542:ASN:HD21	2.05	0.42
1:B:314:ASN:OD1	1:B:316:PRO:HG2	2.19	0.42
1:B:124:VAL:HG12	1:B:128:MET:CE	2.49	0.42
1:A:339:PRO:O	1:A:382:PRO:HA	2.20	0.42
1:A:345:HIS:HA	1:A:382:PRO:HG3	2.01	0.42
1:B:327:ILE:O	1:B:331:GLY:HA2	2.19	0.42
1:B:171:LYS:NZ	1:B:286:HIS:CE1	2.88	0.41
1:A:90:ASN:HD22	1:A:507:ASN:HD21	1.65	0.41
1:A:4:THR:HA	1:A:9:PHE:CD2	2.55	0.41
1:A:152:ILE:HD11	1:A:198:LEU:HD13	2.02	0.41
1:A:262:MET:HE1	1:A:264:GLU:HB3	2.02	0.41
1:A:385:ASN:CG	3:A:1284:HOH:O	2.59	0.41
1:A:186:ILE:O	1:A:187:ASP:C	2.58	0.41
1:A:298:GLY:HA3	1:A:484:PHE:O	2.21	0.41
1:A:486:LEU:O	1:A:490:ILE:HG13	2.20	0.41
1:B:495:HIS:O	1:B:499:VAL:HG23	2.20	0.41
1:A:276:TRP:CZ3	1:A:299:ALA:HB2	2.56	0.41
1:A:110:ILE:O	1:A:117:VAL:HG22	2.20	0.41
1:B:157:GLY:HA3	2:B:1002:F6P:C5	2.27	0.41
1:B:80:ARG:HD2	1:B:307:ARG:HA	2.02	0.41
1:B:102:LEU:HD13	1:B:277:SER:HB3	2.02	0.41
1:A:408:PRO:HA	1:A:478:PHE:O	2.20	0.41
1:B:553:GLU:O	1:B:554:ALA:C	2.59	0.41
1:A:496:LYS:O	1:A:500:GLN:HG3	2.20	0.41

Continued on next page...

Continued from previous page...

Atom-1	Atom-2	Interatomic distance (Å)	Clash overlap (Å)
1:B:171:LYS:HE3	3:B:1384:HOH:O	2.20	0.41
1:B:5:ARG:HA	1:B:5:ARG:HE	1.86	0.41
1:A:538:ASP:OD1	1:A:540:SER:HB3	2.20	0.41
1:B:199:ASN:OD1	1:B:201:GLU:HB2	2.22	0.40
1:B:171:LYS:N	1:B:172:PRO:CD	2.84	0.40
1:A:232:ALA:C	1:A:234:ASP:H	2.19	0.40
1:B:291:ASN:HA	1:B:291:ASN:HD22	1.67	0.40
1:A:471:ARG:HG3	3:A:1125:HOH:O	2.20	0.40
1:A:384:THR:O	1:A:387:GLN:CB	2.66	0.40
1:B:511:GLN:O	1:B:511:GLN:HG2	2.21	0.40
1:B:186:ILE:HB	1:B:216:GLU:CG	2.50	0.40

There are no symmetry-related clashes.

5.3 Torsion angles [i](#)

5.3.1 Protein backbone [i](#)

In the following table, the Percentiles column shows the percent Ramachandran outliers of the chain as a percentile score with respect to all X-ray entries followed by that with respect to entries of similar resolution.

The Analysed column shows the number of residues for which the backbone conformation was analysed, and the total number of residues.

Mol	Chain	Analysed	Favoured	Allowed	Outliers	Percentiles	
1	A	553/558 (99%)	518 (94%)	30 (5%)	5 (1%)	21	15
1	B	553/558 (99%)	523 (95%)	26 (5%)	4 (1%)	26	21
All	All	1106/1116 (99%)	1041 (94%)	56 (5%)	9 (1%)	24	17

All (9) Ramachandran outliers are listed below:

Mol	Chain	Res	Type
1	A	113	ASP
1	A	161	LEU
1	A	233	LYS
1	B	157	GLY
1	A	175	SER
1	B	554	ALA
1	A	2	ALA

Continued on next page...

Continued from previous page...

Mol	Chain	Res	Type
1	B	233	LYS
1	B	20	GLY

5.3.2 Protein sidechains ⓘ

In the following table, the Percentiles column shows the percent sidechain outliers of the chain as a percentile score with respect to all X-ray entries followed by that with respect to entries of similar resolution.

The Analysed column shows the number of residues for which the sidechain conformation was analysed, and the total number of residues.

Mol	Chain	Analysed	Rotameric	Outliers	Percentiles	
1	A	475/479 (99%)	456 (96%)	19 (4%)	38	38
1	B	475/479 (99%)	459 (97%)	16 (3%)	44	45
All	All	950/958 (99%)	915 (96%)	35 (4%)	41	41

All (35) residues with a non-rotameric sidechain are listed below:

Mol	Chain	Res	Type
1	A	14	GLN
1	A	33	LYS
1	A	44	ASN
1	A	90	ASN
1	A	102	LEU
1	A	103	ARG
1	A	111	VAL
1	A	132	CYS
1	A	146	LYS
1	A	148	ILE
1	A	160	ASP
1	A	204	LEU
1	A	229	LEU
1	A	233	LYS
1	A	260	GLN
1	A	265	PHE
1	A	416	ARG
1	A	524	ILE
1	A	553	GLU
1	B	5	ARG
1	B	22	GLU

Continued on next page...

Continued from previous page...

Mol	Chain	Res	Type
1	B	23	LEU
1	B	44	ASN
1	B	90	ASN
1	B	103	ARG
1	B	117	VAL
1	B	161	LEU
1	B	189	THR
1	B	212	PHE
1	B	290	ASP
1	B	419	LEU
1	B	457	ASP
1	B	459	MET
1	B	478	PHE
1	B	511	GLN

Some sidechains can be flipped to improve hydrogen bonding and reduce clashes. All (41) such sidechains are listed below:

Mol	Chain	Res	Type
1	A	14	GLN
1	A	37	ASN
1	A	44	ASN
1	A	46	ASN
1	A	85	ASN
1	A	90	ASN
1	A	104	ASN
1	A	133	GLN
1	A	153	ASN
1	A	215	GLN
1	A	260	GLN
1	A	353	GLN
1	A	387	GLN
1	A	412	GLN
1	A	449	GLN
1	A	519	GLN
1	A	542	ASN
1	A	550	GLN
1	A	551	GLN
1	B	6	ASN
1	B	44	ASN
1	B	46	ASN
1	B	49	HIS
1	B	90	ASN

Continued on next page...

Continued from previous page...

Mol	Chain	Res	Type
1	B	153	ASN
1	B	215	GLN
1	B	286	HIS
1	B	291	ASN
1	B	305	HIS
1	B	353	GLN
1	B	359	ASN
1	B	385	ASN
1	B	387	GLN
1	B	395	HIS
1	B	410	GLN
1	B	420	HIS
1	B	511	GLN
1	B	519	GLN
1	B	542	ASN
1	B	550	GLN
1	B	551	GLN

5.3.3 RNA [i](#)

There are no RNA molecules in this entry.

5.4 Non-standard residues in protein, DNA, RNA chains [i](#)

There are no non-standard protein/DNA/RNA residues in this entry.

5.5 Carbohydrates [i](#)

There are no carbohydrates in this entry.

5.6 Ligand geometry [i](#)

2 ligands are modelled in this entry.

In the following table, the Counts columns list the number of bonds (or angles) for which Mogul statistics could be retrieved, the number of bonds (or angles) that are observed in the model and the number of bonds (or angles) that are defined in the chemical component dictionary. The Link column lists molecule types, if any, to which the group is linked. The Z score for a bond length (or angle) is the number of standard deviations the observed value is removed from the expected value. A bond length (or angle) with $|Z| > 2$ is considered an outlier worth inspection. RMSZ is the root-mean-square of all Z scores of the bond lengths (or angles).

Mol	Type	Chain	Res	Link	Bond lengths			Bond angles		
					Counts	RMSZ	# Z > 2	Counts	RMSZ	# Z > 2
2	F6P	A	1001	-	15,16,16	1.04	1 (6%)	16,25,25	1.12	1 (6%)
2	F6P	B	1002	-	15,16,16	0.92	0	16,25,25	1.57	5 (31%)

In the following table, the Chirals column lists the number of chiral outliers, the number of chiral centers analysed, the number of these observed in the model and the number defined in the chemical component dictionary. Similar counts are reported in the Torsion and Rings columns. '-' means no outliers of that kind were identified.

Mol	Type	Chain	Res	Link	Chirals	Torsions	Rings
2	F6P	A	1001	-	-	0/9/28/28	0/1/1/1
2	F6P	B	1002	-	-	0/9/28/28	0/1/1/1

All (1) bond length outliers are listed below:

Mol	Chain	Res	Type	Atoms	Z	Observed(Å)	Ideal(Å)
2	A	1001	F6P	O2-C2	2.04	1.44	1.41

All (6) bond angle outliers are listed below:

Mol	Chain	Res	Type	Atoms	Z	Observed(°)	Ideal(°)
2	B	1002	F6P	O1-C1-C2	-2.57	106.40	111.39
2	B	1002	F6P	O2-C2-O5	2.02	113.54	109.37
2	B	1002	F6P	O2P-P-O6	2.02	112.39	106.56
2	A	1001	F6P	O4-C4-C5	2.03	117.13	111.05
2	B	1002	F6P	O4-C4-C5	2.31	117.98	111.05
2	B	1002	F6P	O3-C3-C4	3.37	125.40	113.29

There are no chirality outliers.

There are no torsion outliers.

There are no ring outliers.

2 monomers are involved in 5 short contacts:

Mol	Chain	Res	Type	Clashes	Symm-Clashes
2	A	1001	F6P	2	0
2	B	1002	F6P	3	0

5.7 Other polymers ⓘ

There are no such residues in this entry.

5.8 Polymer linkage issues ⓘ

There are no chain breaks in this entry.

6 Fit of model and data [i](#)

6.1 Protein, DNA and RNA chains [i](#)

EDS was not executed - this section will therefore be empty.

6.2 Non-standard residues in protein, DNA, RNA chains [i](#)

EDS was not executed - this section will therefore be empty.

6.3 Carbohydrates [i](#)

EDS was not executed - this section will therefore be empty.

6.4 Ligands [i](#)

EDS was not executed - this section will therefore be empty.

6.5 Other polymers [i](#)

EDS was not executed - this section will therefore be empty.