



wwPDB X-ray Structure Validation Summary Report ⓘ

Sep 7, 2016 – 02:49 PM EDT

PDB ID : 5HSJ
Title : Structure of tyrosine decarboxylase complex with PLP at 1.9 Angstroms resolution
Authors : Ni, Y.; Zhou, J.; Zhu, H.; Zhang, K.
Deposited on : 2016-01-25
Resolution : 1.90 Å(reported)

This is a wwPDB X-ray Structure Validation Summary Report for a publicly released PDB entry.

We welcome your comments at validation@mail.wwpdb.org

A user guide is available at

<http://wwpdb.org/validation/2016/XrayValidationReportHelp>

with specific help available everywhere you see the ⓘ symbol.

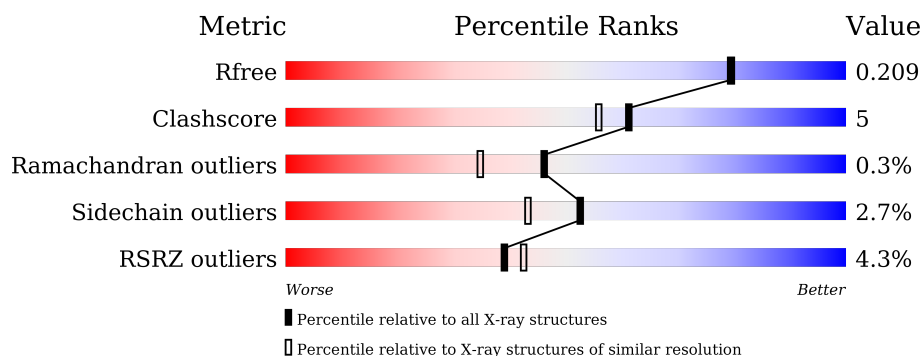
The following versions of software and data (see [references ⓘ](#)) were used in the production of this report:

MolProbity : 4.02b-467
Mogul : 1.7.1 (RC1), CSD as537be (2016)
Xtriage (Phenix) : 1.9-1692
EDS : rb-20027939
Percentile statistics : 20151230.v01 (using entries in the PDB archive December 30th 2015)
Refmac : 5.8.0135
CCP4 : 6.5.0
Ideal geometry (proteins) : Engh & Huber (2001)
Ideal geometry (DNA, RNA) : Parkinson et al. (1996)
Validation Pipeline (wwPDB-VP) : rb-20027939

i

X-RAY DIFFRACTION

Percentile scores (ranging between 0-100) for global validation metrics of the entry are shown in the following graphic. The table shows the number of entries on which the scores are based.



Metric	Whole archive (#Entries)	Similar resolution (#Entries, resolution range(Å))
R_{free}	91344	4755 (1.90-1.90)
Clashscore	102246	5398 (1.90-1.90)
Ramachandran outliers	100387	5338 (1.90-1.90)
Sidechain outliers	100360	5339 (1.90-1.90)
RSRZ outliers	91569	4766 (1.90-1.90)

The table below summarises the geometric issues observed across the polymeric chains and their fit to the electron density. The red, orange, yellow and green segments on the lower bar indicate the fraction of residues that contain outliers for ≥ 3 , 2, 1 and 0 types of geometric quality criteria. A grey segment represents the fraction of residues that are not modelled. The numeric value for each fraction is indicated below the corresponding segment, with a dot representing fractions $\leq 5\%$. The upper red bar (where present) indicates the fraction of residues that have poor fit to the electron density. The numeric value is given above the bar.

Mol	Chain	Length	Quality of chain
1	A	634	<div> <div>6%</div> <div>83%</div> <div>11%</div> <div>• •</div> </div>
1	B	634	<div> <div>2%</div> <div>82%</div> <div>10%</div> <div>• 6%</div> </div>

2 Entry composition

There are 3 unique types of molecules in this entry. The entry contains 10136 atoms, of which 0 are hydrogens and 0 are deuteriums.

In the tables below, the ZeroOcc column contains the number of atoms modelled with zero occupancy, the AltConf column contains the number of residues with at least one atom in alternate conformation and the Trace column contains the number of residues modelled with at most 2 atoms.

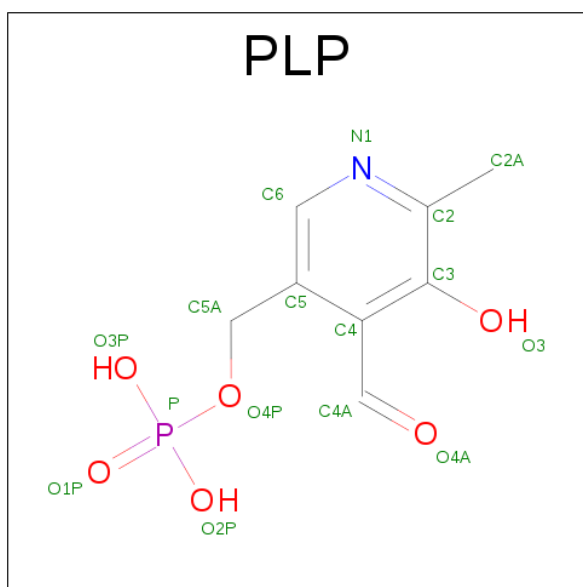
- Molecule 1 is a protein called Putative decarboxylase.

Mol	Chain	Residues	Atoms					ZeroOcc	AltConf	Trace
1	A	606	Total	C	N	O	S	0	0	0
			4807	3078	805	906	18			
1	B	595	Total	C	N	O	S	0	0	0
			4732	3029	794	891	18			

There are 16 discrepancies between the modelled and reference sequences:

Chain	Residue	Modelled	Actual	Comment	Reference
A	627	LEU	-	expression tag	UNP J7GQ11
A	628	GLU	-	expression tag	UNP J7GQ11
A	629	HIS	-	expression tag	UNP J7GQ11
A	630	HIS	-	expression tag	UNP J7GQ11
A	631	HIS	-	expression tag	UNP J7GQ11
A	632	HIS	-	expression tag	UNP J7GQ11
A	633	HIS	-	expression tag	UNP J7GQ11
A	634	HIS	-	expression tag	UNP J7GQ11
B	627	LEU	-	expression tag	UNP J7GQ11
B	628	GLU	-	expression tag	UNP J7GQ11
B	629	HIS	-	expression tag	UNP J7GQ11
B	630	HIS	-	expression tag	UNP J7GQ11
B	631	HIS	-	expression tag	UNP J7GQ11
B	632	HIS	-	expression tag	UNP J7GQ11
B	633	HIS	-	expression tag	UNP J7GQ11
B	634	HIS	-	expression tag	UNP J7GQ11

- Molecule 2 is PYRIDOXAL-5'-PHOSPHATE (three-letter code: PLP) (formula: C₈H₁₀NO₆P).



Mol	Chain	Residues	Atoms					ZeroOcc	AltConf
2	A	1	Total	C	N	O	P	0	0
			15	8	1	5	1		
2	B	1	Total	C	N	O	P	0	0
			15	8	1	5	1		

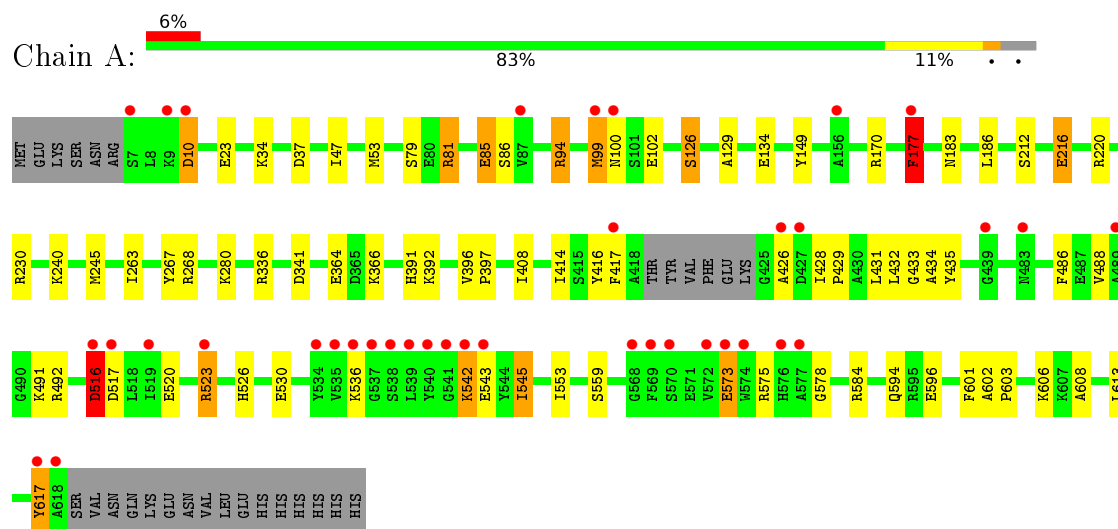
- Molecule 3 is water.

Mol	Chain	Residues	Atoms		ZeroOcc	AltConf
3	A	217	Total	O	0	0
			217	217		
3	B	350	Total	O	0	0
			350	350		

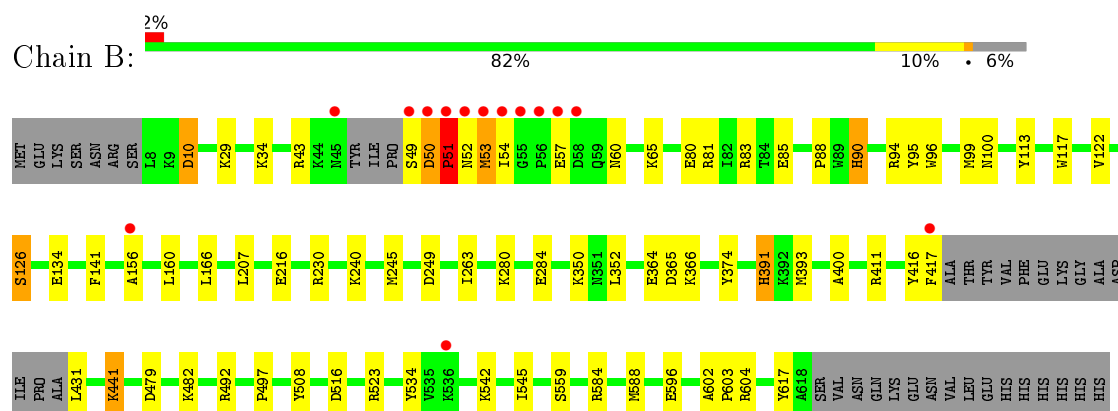
3 Residue-property plots [i](#)

These plots are drawn for all protein, RNA and DNA chains in the entry. The first graphic for a chain summarises the proportions of errors displayed in the second graphic. The second graphic shows the sequence view annotated by issues in geometry and electron density. Residues are color-coded according to the number of geometric quality criteria for which they contain at least one outlier: green = 0, yellow = 1, orange = 2 and red = 3 or more. A red dot above a residue indicates a poor fit to the electron density ($RSRZ > 2$). Stretches of 2 or more consecutive residues without any outlier are shown as a green connector. Residues present in the sample, but not in the model, are shown in grey.

- Molecule 1: Putative decarboxylase



- Molecule 1: Putative decarboxylase



4 Data and refinement statistics

Property	Value	Source
Space group	P 1 21 1	Depositor
Cell constants a, b, c, α , β , γ	61.87Å 126.83Å 82.88Å 90.00° 109.73° 90.00°	Depositor
Resolution (Å)	49.26 – 1.90 49.21 – 1.90	Depositor EDS
% Data completeness (in resolution range)	99.5 (49.26-1.90) 99.5 (49.21-1.90)	Depositor EDS
R_{merge}	(Not available)	Depositor
R_{sym}	(Not available)	Depositor
$\langle I/\sigma(I) \rangle$ ¹	2.04 (at 1.90Å)	Xtriage
Refinement program	REFMAC 5.7.0029	Depositor
R, R_{free}	0.172 , 0.212 0.169 , 0.209	Depositor DCC
R_{free} test set	4717 reflections (5.27%)	DCC
Wilson B-factor (Å ²)	27.2	Xtriage
Anisotropy	0.592	Xtriage
Bulk solvent k_{sol} (e/Å ³), B_{sol} (Å ²)	0.37 , 47.8	EDS
L-test for twinning ²	$\langle L \rangle = 0.50$, $\langle L^2 \rangle = 0.33$	Xtriage
Estimated twinning fraction	0.021 for h,-k,-h-l	Xtriage
F_o, F_c correlation	0.97	EDS
Total number of atoms	10136	wwPDB-VP
Average B, all atoms (Å ²)	32.0	wwPDB-VP

Xtriage's analysis on translational NCS is as follows: *The largest off-origin peak in the Patterson function is 4.13% of the height of the origin peak. No significant pseudotranslation is detected.*

¹Intensities estimated from amplitudes.

²Theoretical values of $\langle |L| \rangle$, $\langle L^2 \rangle$ for acentric reflections are 0.5, 0.333 respectively for untwinned datasets, and 0.375, 0.2 for perfectly twinned datasets.

5 Model quality [i](#)

5.1 Standard geometry [i](#)

Bond lengths and bond angles in the following residue types are not validated in this section: PLP

The Z score for a bond length (or angle) is the number of standard deviations the observed value is removed from the expected value. A bond length (or angle) with $|Z| > 5$ is considered an outlier worth inspection. RMSZ is the root-mean-square of all Z scores of the bond lengths (or angles).

Mol	Chain	Bond lengths		Bond angles	
		RMSZ	# Z >5	RMSZ	# Z >5
1	A	1.07	8/4925 (0.2%)	1.03	20/6673 (0.3%)
1	B	1.16	13/4846 (0.3%)	1.07	23/6561 (0.4%)
All	All	1.11	21/9771 (0.2%)	1.05	43/13234 (0.3%)

The worst 5 of 21 bond length outliers are listed below:

Mol	Chain	Res	Type	Atoms	Z	Observed(Å)	Ideal(Å)
1	A	216	GLU	CG-CD	-6.57	1.42	1.51
1	B	80	GLU	CG-CD	-6.36	1.42	1.51
1	A	177	PHE	CB-CG	-6.21	1.40	1.51
1	B	96	TRP	CE3-CZ3	6.13	1.48	1.38
1	B	117	TRP	CD2-CE2	6.03	1.48	1.41

The worst 5 of 43 bond angle outliers are listed below:

Mol	Chain	Res	Type	Atoms	Z	Observed(°)	Ideal(°)
1	A	575	ARG	NE-CZ-NH2	11.38	125.99	120.30
1	B	280	LYS	CD-CE-NZ	-10.49	87.57	111.70
1	A	575	ARG	NE-CZ-NH1	-10.13	115.24	120.30
1	B	230	ARG	NE-CZ-NH1	10.12	125.36	120.30
1	B	94	ARG	NE-CZ-NH2	10.02	125.31	120.30

There are no chirality outliers.

There are no planarity outliers.

5.2 Too-close contacts [i](#)

In the following table, the Non-H and H(model) columns list the number of non-hydrogen atoms and hydrogen atoms in the chain respectively. The H(added) column lists the number of hydrogen

atoms added and optimized by MolProbity. The Clashes column lists the number of clashes within the asymmetric unit, whereas Symm-Clashes lists symmetry related clashes.

Mol	Chain	Non-H	H(model)	H(added)	Clashes	Symm-Clashes
1	A	4807	0	4700	65	0
1	B	4732	0	4626	48	0
2	A	15	0	7	4	0
2	B	15	0	7	1	0
3	A	217	0	0	4	0
3	B	350	0	0	5	0
All	All	10136	0	9340	102	0

The all-atom clashscore is defined as the number of clashes found per 1000 atoms (including hydrogen atoms). The all-atom clashscore for this structure is 5.

The worst 5 of 102 close contacts within the same asymmetric unit are listed below, sorted by their clash magnitude.

Atom-1	Atom-2	Interatomic distance (Å)	Clash overlap (Å)
1:A:392:LYS:HZ1	2:A:701:PLP:C4A	1.42	1.20
1:A:491:LYS:HD2	1:A:617:TYR:HE2	1.16	1.05
1:A:94:ARG:NH2	1:B:50:ASP:O	1.89	1.04
1:A:392:LYS:HZ2	2:A:701:PLP:C4A	1.49	1.01
1:B:588:MET:SD	3:B:1096:HOH:O	2.19	1.00

There are no symmetry-related clashes.

5.3 Torsion angles [i](#)

5.3.1 Protein backbone [i](#)

In the following table, the Percentiles column shows the percent Ramachandran outliers of the chain as a percentile score with respect to all X-ray entries followed by that with respect to entries of similar resolution.

The Analysed column shows the number of residues for which the backbone conformation was analysed, and the total number of residues.

Mol	Chain	Analysed	Favoured	Allowed	Outliers	Percentiles	
1	A	602/634 (95%)	584 (97%)	16 (3%)	2 (0%)	46	35
1	B	589/634 (93%)	576 (98%)	11 (2%)	2 (0%)	46	35
All	All	1191/1268 (94%)	1160 (97%)	27 (2%)	4 (0%)	46	35

All (4) Ramachandran outliers are listed below:

Mol	Chain	Res	Type
1	A	240	LYS
1	B	52	ASN
1	A	432	LEU
1	B	51	PRO

5.3.2 Protein sidechains ⓘ

In the following table, the Percentiles column shows the percent sidechain outliers of the chain as a percentile score with respect to all X-ray entries followed by that with respect to entries of similar resolution.

The Analysed column shows the number of residues for which the sidechain conformation was analysed, and the total number of residues.

Mol	Chain	Analysed	Rotameric	Outliers	Percentiles	
1	A	502/530 (95%)	485 (97%)	17 (3%)	44	33
1	B	495/530 (93%)	485 (98%)	10 (2%)	63	57
All	All	997/1060 (94%)	970 (97%)	27 (3%)	52	43

5 of 27 residues with a non-rotameric sidechain are listed below:

Mol	Chain	Res	Type
1	A	516	ASP
1	A	573	GLU
1	B	166	LEU
1	A	523	ARG
1	A	126	SER

Some sidechains can be flipped to improve hydrogen bonding and reduce clashes. All (4) such sidechains are listed below:

Mol	Chain	Res	Type
1	A	576	HIS
1	B	90	HIS
1	B	317	GLN
1	B	391	HIS

5.3.3 RNA ⓘ

There are no RNA molecules in this entry.

5.4 Non-standard residues in protein, DNA, RNA chains [i](#)

There are no non-standard protein/DNA/RNA residues in this entry.

5.5 Carbohydrates [i](#)

There are no carbohydrates in this entry.

5.6 Ligand geometry [i](#)

2 ligands are modelled in this entry.

In the following table, the Counts columns list the number of bonds (or angles) for which Mogul statistics could be retrieved, the number of bonds (or angles) that are observed in the model and the number of bonds (or angles) that are defined in the chemical component dictionary. The Link column lists molecule types, if any, to which the group is linked. The Z score for a bond length (or angle) is the number of standard deviations the observed value is removed from the expected value. A bond length (or angle) with $|Z| > 2$ is considered an outlier worth inspection. RMSZ is the root-mean-square of all Z scores of the bond lengths (or angles).

Mol	Type	Chain	Res	Link	Bond lengths			Bond angles		
					Counts	RMSZ	# $ Z > 2$	Counts	RMSZ	# $ Z > 2$
2	PLP	A	701	1	15,15,16	3.65	4 (26%)	21,22,23	2.18	7 (33%)
2	PLP	B	702	1	15,15,16	1.74	3 (20%)	21,22,23	2.20	6 (28%)

In the following table, the Chirals column lists the number of chiral outliers, the number of chiral centers analysed, the number of these observed in the model and the number defined in the chemical component dictionary. Similar counts are reported in the Torsion and Rings columns. '-' means no outliers of that kind were identified.

Mol	Type	Chain	Res	Link	Chirals	Torsions	Rings
2	PLP	A	701	1	-	0/6/6/8	0/1/1/1
2	PLP	B	702	1	-	0/6/6/8	0/1/1/1

The worst 5 of 7 bond length outliers are listed below:

Mol	Chain	Res	Type	Atoms	Z	Observed(Å)	Ideal(Å)
2	B	702	PLP	P-O1P	-2.00	1.44	1.50
2	A	701	PLP	C6-C5	2.21	1.42	1.37
2	B	702	PLP	C3-C2	3.71	1.43	1.40
2	B	702	PLP	C5-C4	3.98	1.45	1.40
2	A	701	PLP	C3-C4	4.17	1.49	1.40

The worst 5 of 13 bond angle outliers are listed below:

Mol	Chain	Res	Type	Atoms	Z	Observed($^{\circ}$)	Ideal($^{\circ}$)
2	A	701	PLP	C5A-C5-C4	-3.99	116.26	121.63
2	B	702	PLP	C4A-C4-C3	-2.94	115.29	120.42
2	A	701	PLP	C3-C2-N1	-2.70	117.31	120.69
2	B	702	PLP	O3P-P-O4P	-2.42	99.65	106.72
2	A	701	PLP	C5-C6-N1	-2.10	120.19	123.86

There are no chirality outliers.

There are no torsion outliers.

There are no ring outliers.

2 monomers are involved in 5 short contacts:

Mol	Chain	Res	Type	Clashes	Symm-Clashes
2	A	701	PLP	4	0
2	B	702	PLP	1	0

5.7 Other polymers [i](#)

There are no such residues in this entry.

5.8 Polymer linkage issues [i](#)

There are no chain breaks in this entry.

6 Fit of model and data [i](#)

6.1 Protein, DNA and RNA chains [i](#)

In the following table, the column labelled ‘#RSRZ> 2’ contains the number (and percentage) of RSRZ outliers, followed by percent RSRZ outliers for the chain as percentile scores relative to all X-ray entries and entries of similar resolution. The OWAB column contains the minimum, median, 95th percentile and maximum values of the occupancy-weighted average B-factor per residue. The column labelled ‘Q< 0.9’ lists the number of (and percentage) of residues with an average occupancy less than 0.9.

Mol	Chain	Analysed	<RSRZ>	#RSRZ>2	OWAB(Å ²)	Q<0.9
1	A	606/634 (95%)	0.19	38 (6%) 23 26	18, 31, 64, 150	0
1	B	595/634 (93%)	-0.18	14 (2%) 62 66	15, 25, 52, 144	0
All	All	1201/1268 (94%)	0.01	52 (4%) 39 42	15, 27, 58, 150	0

The worst 5 of 52 RSRZ outliers are listed below:

Mol	Chain	Res	Type	RSRZ
1	A	536	LYS	21.7
1	A	537	GLY	20.5
1	A	538	SER	18.5
1	A	535	VAL	16.7
1	A	540	TYR	14.5

6.2 Non-standard residues in protein, DNA, RNA chains [i](#)

There are no non-standard protein/DNA/RNA residues in this entry.

6.3 Carbohydrates [i](#)

There are no carbohydrates in this entry.

6.4 Ligands [i](#)

In the following table, the Atoms column lists the number of modelled atoms in the group and the number defined in the chemical component dictionary. LLDF column lists the quality of electron density of the group with respect to its neighbouring residues in protein, DNA or RNA chains. The B-factors column lists the minimum, median, 95th percentile and maximum values of B factors of atoms in the group. The column labelled ‘Q< 0.9’ lists the number of atoms with occupancy less than 0.9.

Mol	Type	Chain	Res	Atoms	RSCC	RSR	LLDF	B-factors(\AA^2)	Q<0.9
2	PLP	B	702	15/16	0.98	0.15	-0.13	19,22,25,30	0
2	PLP	A	701	15/16	0.97	0.09	-0.96	26,31,39,46	0

6.5 Other polymers [i](#)

There are no such residues in this entry.