



Full wwPDB X-ray Structure Validation Report ⓘ

Feb 19, 2016 – 06:05 PM GMT

PDB ID : 1HUV
Title : CRYSTAL STRUCTURE OF A SOLUBLE MUTANT OF THE
MEMBRANE-ASSOCIATED (S)-MANDELATE DEHYDROGENASE
FROM PSEUDOMONAS PUTIDA AT 2.15Å RESOLUTION
Authors : Mathews, F.S.; Sukumar, N.
Deposited on : 2001-01-04
Resolution : 2.15 Å(reported)

This is a Full wwPDB X-ray Structure Validation Report for a publicly released PDB entry.
We welcome your comments at validation@mail.wwpdb.org
A user guide is available at
<http://wwpdb.org/validation/2016/XrayValidationReportHelp>
with specific help available everywhere you see the ⓘ symbol.

The following versions of software and data (see [references ⓘ](#)) were used in the production of this report:

MolProbity : 4.02b-467
Mogul : 1.7.1 (RC1), CSD as537be (2016)
Xtriage (Phenix) : 1.9-1692
EDS : rb-20026982
Percentile statistics : 20151230.v01 (using entries in the PDB archive December 30th 2015)
Refmac : 5.8.0135
CCP4 : 6.5.0
Ideal geometry (proteins) : Engh & Huber (2001)
Ideal geometry (DNA, RNA) : Parkinson et al. (1996)
Validation Pipeline (wwPDB-VP) : rb-20026982

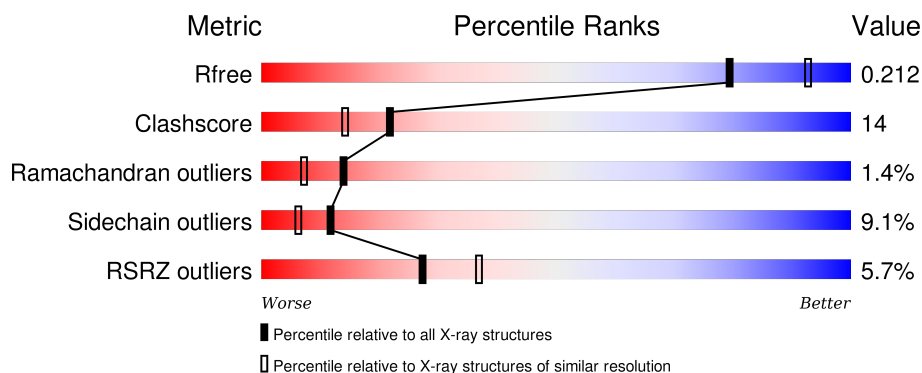
1 Overall quality at a glance

The following experimental techniques were used to determine the structure:

X-RAY DIFFRACTION


The reported resolution of this entry is 2.15 Å.

Percentile scores (ranging between 0-100) for global validation metrics of the entry are shown in the following graphic. The table shows the number of entries on which the scores are based.



Metric	Whole archive (#Entries)	Similar resolution (#Entries, resolution range(Å))
R_{free}	91344	1045 (2.16-2.16)
Clashscore	102246	1152 (2.16-2.16)
Ramachandran outliers	100387	1131 (2.16-2.16)
Sidechain outliers	100360	1131 (2.16-2.16)
RSRZ outliers	91569	1050 (2.16-2.16)

The table below summarises the geometric issues observed across the polymeric chains and their fit to the electron density. The red, orange, yellow and green segments on the lower bar indicate the fraction of residues that contain outliers for ≥ 3 , 2, 1 and 0 types of geometric quality criteria. A grey segment represents the fraction of residues that are not modelled. The numeric value for each fraction is indicated below the corresponding segment, with a dot representing fractions $\leq 5\%$. The upper red bar (where present) indicates the fraction of residues that have poor fit to the electron density. The numeric value is given above the bar.

Mol	Chain	Length	Quality of chain
1	A	380	

The following table lists non-polymeric compounds, carbohydrate monomers and non-standard residues in protein, DNA, RNA chains that are outliers for geometric or electron-density-fit criteria:

Mol	Type	Chain	Res	Chirality	Geometry	Clashes	Electron density
2	SO4	A	400	-	-	-	X

2 Entry composition [i](#)

There are 5 unique types of molecules in this entry. The entry contains 3060 atoms, of which 0 are hydrogens and 0 are deuteriums.

In the tables below, the ZeroOcc column contains the number of atoms modelled with zero occupancy, the AltConf column contains the number of residues with at least one atom in alternate conformation and the Trace column contains the number of residues modelled with at most 2 atoms.

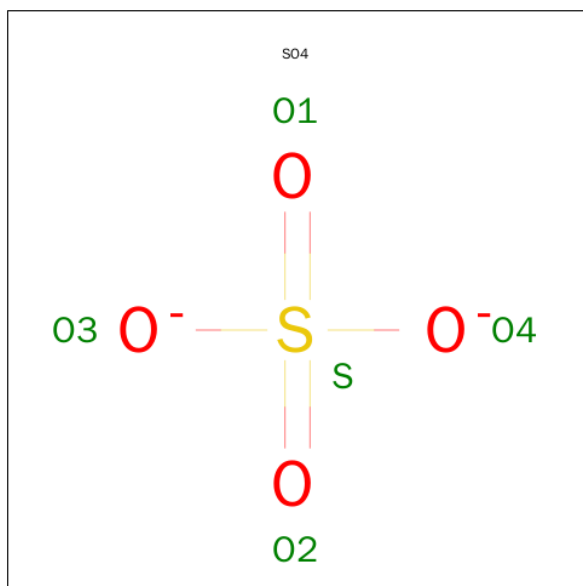
- Molecule 1 is a protein called L(+)-MANDELATE DEHYDROGENASE.

Mol	Chain	Residues	Atoms					ZeroOcc	AltConf	Trace
1	A	349	Total	C	N	O	S	27	0	0
			2721	1723	483	502	13			

There is a discrepancy between the modelled and reference sequences:

Chain	Residue	Modelled	Actual	Comment	Reference
A	15	ALA	ARG	SEE REMARK 999	UNP P20932

- Molecule 2 is SULFATE ION (three-letter code: SO₄) (formula: O₄S).



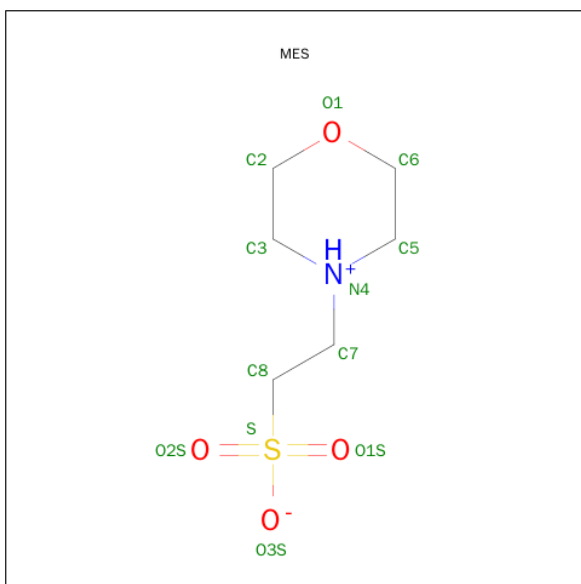
Mol	Chain	Residues	Atoms			ZeroOcc	AltConf
2	A	1	Total	O	S	0	0
			5	4	1		

- Molecule 3 is FLAVIN MONONUCLEOTIDE (three-letter code: FMN) (formula: C₁₇H₂₁N₄O₉P).



Mol	Chain	Residues	Atoms					ZeroOcc	AltConf
3	A	1	Total	C	N	O	P	0	0
			31	17	4	9	1		

- Molecule 4 is 2-(N-MORPHOLINO)-ETHANESULFONIC ACID (three-letter code: MES) (formula: $\text{C}_6\text{H}_{13}\text{NO}_4\text{S}$).



Mol	Chain	Residues	Atoms					ZeroOcc	AltConf
4	A	1	Total	C	N	O	S	0	0
			12	6	1	4	1		

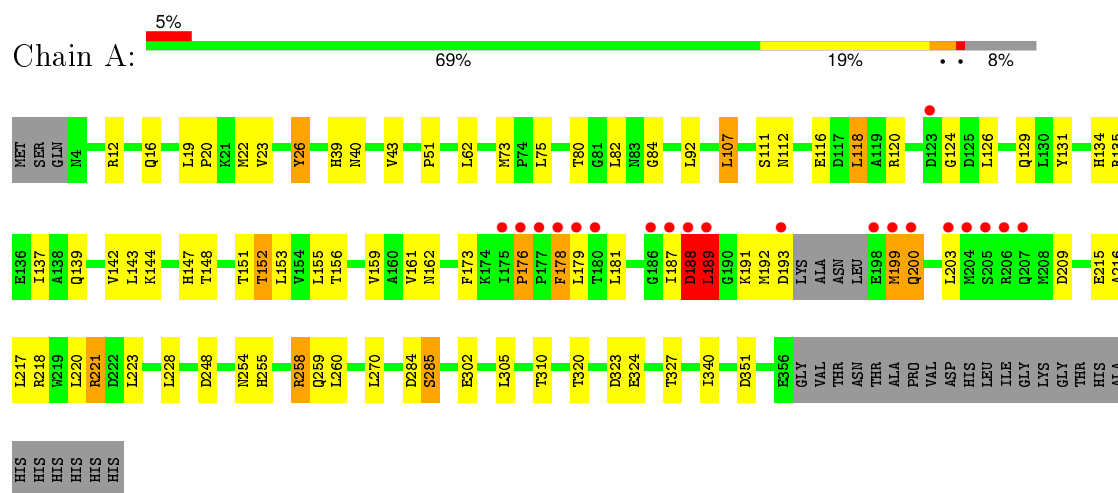
- Molecule 5 is water.

Mol	Chain	Residues	Atoms		ZeroOcc	AltConf
5	A	291	Total 291	O 291	0	0

3 Residue-property plots [i](#)

These plots are drawn for all protein, RNA and DNA chains in the entry. The first graphic for a chain summarises the proportions of errors displayed in the second graphic. The second graphic shows the sequence view annotated by issues in geometry and electron density. Residues are color-coded according to the number of geometric quality criteria for which they contain at least one outlier: green = 0, yellow = 1, orange = 2 and red = 3 or more. A red dot above a residue indicates a poor fit to the electron density ($RSRZ > 2$). Stretches of 2 or more consecutive residues without any outlier are shown as a green connector. Residues present in the sample, but not in the model, are shown in grey.

- Molecule 1: L(+)-MANDELATE DEHYDROGENASE



4 Data and refinement statistics

Property	Value	Source
Space group	I 4	Depositor
Cell constants a, b, c, α , β , γ	99.59 Å 99.59 Å 87.38 Å 90.00° 90.00° 90.00°	Depositor
Resolution (Å)	27.42 – 2.15 49.80 – 2.00	Depositor EDS
% Data completeness (in resolution range)	98.4 (27.42-2.15) 97.1 (49.80-2.00)	Depositor EDS
R_{merge}	(Not available)	Depositor
R_{sym}	9.20	Depositor
$\langle I/\sigma(I) \rangle$ ¹	2.63 (at 2.00 Å)	Xtriage
Refinement program	CNS 1.0	Depositor
R, R_{free}	0.175 , 0.212 0.174 , 0.212	Depositor DCC
R_{free} test set	2286 reflections (9.99%)	DCC
Wilson B-factor (Å ²)	20.3	Xtriage
Anisotropy	0.072	Xtriage
Bulk solvent k_{sol} (e/Å ³), B_{sol} (Å ²)	0.35 , 59.1	EDS
Estimated twinning fraction	0.036 for -k,-h,-l	Xtriage
L-test for twinning ²	$\langle L \rangle = 0.49$, $\langle L^2 \rangle = 0.32$	Xtriage
Outliers	0 of 28882 reflections	Xtriage
F_o, F_c correlation	0.95	EDS
Total number of atoms	3060	wwPDB-VP
Average B, all atoms (Å ²)	23.0	wwPDB-VP

Xtriage's analysis on translational NCS is as follows: *The largest off-origin peak in the Patterson function is 5.45% of the height of the origin peak. No significant pseudotranslation is detected.*

¹Intensities estimated from amplitudes.

²Theoretical values of $\langle |L| \rangle$, $\langle L^2 \rangle$ for acentric reflections are 0.5, 0.375 respectively for untwinned datasets, and 0.333, 0.2 for perfectly twinned datasets.

5 Model quality

5.1 Standard geometry

Bond lengths and bond angles in the following residue types are not validated in this section: FMN, SO4, MES

The Z score for a bond length (or angle) is the number of standard deviations the observed value is removed from the expected value. A bond length (or angle) with $|Z| > 5$ is considered an outlier worth inspection. RMSZ is the root-mean-square of all Z scores of the bond lengths (or angles).

Mol	Chain	Bond lengths		Bond angles	
		RMSZ	$\# Z > 5$	RMSZ	$\# Z > 5$
1	A	0.34	0/2769	0.70	0/3743

There are no bond length outliers.

There are no bond angle outliers.

There are no chirality outliers.

There are no planarity outliers.

5.2 Too-close contacts

In the following table, the Non-H and H(model) columns list the number of non-hydrogen atoms and hydrogen atoms in the chain respectively. The H(added) column lists the number of hydrogen atoms added and optimized by MolProbity. The Clashes column lists the number of clashes within the asymmetric unit, whereas Symm-Clashes lists symmetry related clashes.

Mol	Chain	Non-H	H(model)	H(added)	Clashes	Symm-Clashes
1	A	2721	0	2756	77	0
2	A	5	0	0	1	0
3	A	31	0	19	4	0
4	A	12	0	13	0	0
5	A	291	0	0	7	0
All	All	3060	0	2788	77	0

The all-atom clashscore is defined as the number of clashes found per 1000 atoms (including hydrogen atoms). The all-atom clashscore for this structure is 14.

All (77) close contacts within the same asymmetric unit are listed below, sorted by their clash magnitude.

Atom-1	Atom-2	Interatomic distance (Å)	Clash overlap (Å)
1:A:40:ASN:HD21	1:A:254:ASN:HD21	1.15	0.93
1:A:51:PRO:HB3	1:A:340:ILE:HA	1.52	0.92
1:A:176:PRO:HB2	1:A:179:LEU:HD23	1.51	0.91
1:A:84:GLY:H	1:A:112:ASN:HD22	1.25	0.80
1:A:156:THR:HG21	3:A:390:FMN:O2	1.81	0.79
1:A:142:VAL:HG11	1:A:223:LEU:HD12	1.71	0.71
1:A:39:HIS:O	1:A:43:VAL:HG13	1.92	0.68
1:A:176:PRO:HB2	1:A:179:LEU:CD2	2.22	0.67
1:A:161:VAL:HG11	5:A:1070:HOH:O	1.97	0.65
1:A:323:ASP:O	1:A:327:THR:HG23	1.97	0.64
1:A:147:HIS:HD2	5:A:1033:HOH:O	1.81	0.64
1:A:84:GLY:H	1:A:112:ASN:ND2	1.97	0.62
1:A:188:ASP:O	1:A:189:LEU:HB2	1.98	0.62
1:A:139:GLN:O	1:A:143:LEU:HD23	2.01	0.61
1:A:187:ILE:HG13	1:A:187:ILE:O	2.00	0.61
1:A:284:ASP:O	1:A:285:SER:HB2	2.02	0.60
1:A:82:LEU:N	1:A:82:LEU:HD12	2.16	0.60
1:A:179:LEU:HD22	1:A:179:LEU:H	1.67	0.59
1:A:215:GLU:HA	1:A:218:ARG:HH11	1.67	0.59
1:A:134:HIS:HB2	1:A:203:LEU:HD23	1.85	0.58
1:A:221:ARG:O	1:A:221:ARG:HD3	2.04	0.58
1:A:26:TYR:O	1:A:258:ARG:NH2	2.30	0.57
1:A:84:GLY:N	1:A:112:ASN:HD22	2.00	0.57
1:A:215:GLU:HA	1:A:218:ARG:NH1	2.20	0.56
1:A:188:ASP:N	1:A:188:ASP:OD1	2.40	0.55
1:A:259:GLN:NE2	5:A:979:HOH:O	2.39	0.54
1:A:200:GLN:O	1:A:203:LEU:HB2	2.08	0.54
1:A:221:ARG:NH2	1:A:248:ASP:OD2	2.41	0.53
1:A:111:SER:HA	5:A:931:HOH:O	2.07	0.53
1:A:255:HIS:O	1:A:258:ARG:HG3	2.08	0.53
1:A:134:HIS:CE1	1:A:200:GLN:HB2	2.44	0.53
1:A:22:MET:HG2	1:A:173:PHE:HD1	1.74	0.53
1:A:134:HIS:CD2	1:A:137:ILE:HG13	2.45	0.52
1:A:181:LEU:N	1:A:181:LEU:HD22	2.24	0.52
1:A:129:GLN:NE2	3:A:390:FMN:HN3	2.07	0.51
1:A:135:ARG:NH1	1:A:209:ASP:OD2	2.44	0.51
1:A:284:ASP:O	1:A:285:SER:CB	2.59	0.51
1:A:124:GLY:O	1:A:126:LEU:HD13	2.10	0.50
1:A:258:ARG:HD3	2:A:400:SO4:O4	2.11	0.50
1:A:134:HIS:HD2	1:A:137:ILE:H	1.60	0.50
1:A:62:LEU:O	1:A:73:MET:HA	2.12	0.50
1:A:161:VAL:HG13	5:A:1002:HOH:O	2.12	0.50

Continued on next page...

Continued from previous page...

Atom-1	Atom-2	Interatomic distance (Å)	Clash overlap (Å)
1:A:258:ARG:NE	3:A:390:FMN:HM82	2.27	0.49
1:A:221:ARG:O	1:A:221:ARG:CD	2.60	0.48
1:A:107:LEU:HG	1:A:118:LEU:HD12	1.94	0.48
1:A:12:ARG:HH12	1:A:16:GLN:NE2	2.11	0.48
1:A:134:HIS:HD2	1:A:137:ILE:HG13	1.80	0.47
1:A:20:PRO:HG2	1:A:23:VAL:CG2	2.44	0.47
1:A:284:ASP:HB3	1:A:305:LEU:HB2	1.98	0.46
1:A:218:ARG:HH11	1:A:218:ARG:HG3	1.79	0.46
1:A:40:ASN:ND2	1:A:254:ASN:HD21	1.96	0.46
1:A:80:THR:HA	3:A:390:FMN:N5	2.31	0.46
1:A:120:ARG:HG2	1:A:120:ARG:HH11	1.80	0.46
1:A:221:ARG:HA	1:A:221:ARG:HD3	1.82	0.46
1:A:82:LEU:N	1:A:82:LEU:CD1	2.78	0.46
1:A:142:VAL:CG1	1:A:223:LEU:HD12	2.45	0.45
1:A:151:THR:OG1	1:A:152:THR:HG23	2.17	0.45
1:A:191:LYS:O	1:A:199:MET:HE1	2.16	0.45
1:A:116:GLU:HB2	1:A:148:THR:HG21	1.99	0.45
1:A:116:GLU:HB3	5:A:941:HOH:O	2.16	0.45
1:A:131:TYR:CE1	1:A:156:THR:OG1	2.69	0.45
1:A:129:GLN:HG2	1:A:156:THR:HG23	2.00	0.44
1:A:284:ASP:C	1:A:284:ASP:OD1	2.56	0.43
1:A:112:ASN:ND2	1:A:179:LEU:HD12	2.33	0.43
1:A:178:PHE:CD2	1:A:179:LEU:HD22	2.54	0.43
1:A:39:HIS:CE1	1:A:43:VAL:HG12	2.53	0.43
1:A:327:THR:HG21	5:A:1139:HOH:O	2.18	0.43
1:A:107:LEU:HD22	1:A:111:SER:HB3	2.00	0.43
1:A:159:VAL:O	1:A:159:VAL:HG12	2.18	0.43
1:A:223:LEU:O	1:A:223:LEU:HD13	2.19	0.43
1:A:223:LEU:HD13	1:A:223:LEU:C	2.40	0.42
1:A:134:HIS:CD2	1:A:137:ILE:H	2.38	0.42
1:A:161:VAL:HG12	1:A:162:ASN:N	2.35	0.41
1:A:189:LEU:HD22	1:A:189:LEU:HA	1.90	0.41
1:A:135:ARG:NH2	1:A:216:ALA:HB2	2.36	0.41
1:A:320:THR:O	1:A:324:GLU:HG3	2.20	0.41
1:A:221:ARG:C	1:A:221:ARG:CD	2.90	0.40

There are no symmetry-related clashes.

5.3 Torsion angles [i](#)

5.3.1 Protein backbone [i](#)

In the following table, the Percentiles column shows the percent Ramachandran outliers of the chain as a percentile score with respect to all X-ray entries followed by that with respect to entries of similar resolution.

The Analysed column shows the number of residues for which the backbone conformation was analysed, and the total number of residues.

Mol	Chain	Analysed	Favoured	Allowed	Outliers	Percentiles
1	A	345/380 (91%)	326 (94%)	14 (4%)	5 (1%)	14 7

All (5) Ramachandran outliers are listed below:

Mol	Chain	Res	Type
1	A	188	ASP
1	A	189	LEU
1	A	285	SER
1	A	192	MET
1	A	176	PRO

5.3.2 Protein sidechains [i](#)

In the following table, the Percentiles column shows the percent sidechain outliers of the chain as a percentile score with respect to all X-ray entries followed by that with respect to entries of similar resolution.

The Analysed column shows the number of residues for which the sidechain conformation was analysed, and the total number of residues.

Mol	Chain	Analysed	Rotameric	Outliers	Percentiles
1	A	286/311 (92%)	260 (91%)	26 (9%)	12 6

All (26) residues with a non-rotameric sidechain are listed below:

Mol	Chain	Res	Type
1	A	19	LEU
1	A	26	TYR
1	A	75	LEU
1	A	92	LEU
1	A	107	LEU
1	A	118	LEU

Continued on next page...

Continued from previous page...

Mol	Chain	Res	Type
1	A	144	LYS
1	A	152	THR
1	A	153	LEU
1	A	155	LEU
1	A	178	PHE
1	A	188	ASP
1	A	189	LEU
1	A	193	ASP
1	A	199	MET
1	A	200	GLN
1	A	217	LEU
1	A	220	LEU
1	A	221	ARG
1	A	228	LEU
1	A	258	ARG
1	A	260	LEU
1	A	270	LEU
1	A	302	GLU
1	A	310	THR
1	A	351	ASP

Some sidechains can be flipped to improve hydrogen bonding and reduce clashes. All (12) such sidechains are listed below:

Mol	Chain	Res	Type
1	A	16	GLN
1	A	40	ASN
1	A	83	ASN
1	A	112	ASN
1	A	129	GLN
1	A	134	HIS
1	A	147	HIS
1	A	162	ASN
1	A	207	GLN
1	A	259	GLN
1	A	272	GLN
1	A	339	GLN

5.3.3 RNA ⓘ

There are no RNA molecules in this entry.

5.4 Non-standard residues in protein, DNA, RNA chains ⓘ

There are no non-standard protein/DNA/RNA residues in this entry.

5.5 Carbohydrates ⓘ

There are no carbohydrates in this entry.

5.6 Ligand geometry ⓘ

3 ligands are modelled in this entry.

In the following table, the Counts columns list the number of bonds (or angles) for which Mogul statistics could be retrieved, the number of bonds (or angles) that are observed in the model and the number of bonds (or angles) that are defined in the chemical component dictionary. The Link column lists molecule types, if any, to which the group is linked. The Z score for a bond length (or angle) is the number of standard deviations the observed value is removed from the expected value. A bond length (or angle) with $|Z| > 2$ is considered an outlier worth inspection. RMSZ is the root-mean-square of all Z scores of the bond lengths (or angles).

Mol	Type	Chain	Res	Link	Bond lengths			Bond angles		
					Counts	RMSZ	$\# Z > 2$	Counts	RMSZ	$\# Z > 2$
3	FMN	A	390	-	32,33,33	2.81	14 (43%)	34,50,50	3.72	12 (35%)
2	SO4	A	400	-	4,4,4	0.55	0	6,6,6	0.06	0
4	MES	A	890	-	12,12,12	2.99	4 (33%)	15,16,16	1.42	3 (20%)

In the following table, the Chirals column lists the number of chiral outliers, the number of chiral centers analysed, the number of these observed in the model and the number defined in the chemical component dictionary. Similar counts are reported in the Torsion and Rings columns. '-' means no outliers of that kind were identified.

Mol	Type	Chain	Res	Link	Chirals	Torsions	Rings
3	FMN	A	390	-	-	0/18/18/18	0/3/3/3
2	SO4	A	400	-	-	0/0/0/0	0/0/0/0
4	MES	A	890	-	-	0/6/14/14	0/1/1/1

All (18) bond length outliers are listed below:

Mol	Chain	Res	Type	Atoms	Z	Observed(Å)	Ideal(Å)
3	A	390	FMN	P-O5'	-2.28	1.53	1.59
3	A	390	FMN	C10-N10	2.06	1.41	1.39
3	A	390	FMN	C9-C8	2.11	1.43	1.37
4	A	890	MES	C8-S	2.22	1.80	1.77

Continued on next page...

Continued from previous page...

Mol	Chain	Res	Type	Atoms	Z	Observed(Å)	Ideal(Å)
3	A	390	FMN	C6-C5A	2.36	1.45	1.41
3	A	390	FMN	C5A-N5	2.70	1.39	1.35
3	A	390	FMN	C9-C9A	3.14	1.47	1.40
3	A	390	FMN	C6-C7	3.22	1.46	1.37
4	A	890	MES	O3S-S	3.51	1.59	1.47
3	A	390	FMN	C2-N3	4.21	1.46	1.38
3	A	390	FMN	C9A-C5A	4.50	1.52	1.42
3	A	390	FMN	C8-C7	4.56	1.53	1.41
4	A	890	MES	O2S-S	4.74	1.59	1.45
3	A	390	FMN	C4-C4A	4.87	1.51	1.41
3	A	390	FMN	C9A-N10	5.75	1.47	1.38
3	A	390	FMN	C4-N3	5.77	1.43	1.33
3	A	390	FMN	C4A-C10	6.54	1.52	1.40
4	A	890	MES	O1S-S	7.94	1.68	1.45

All (15) bond angle outliers are listed below:

Mol	Chain	Res	Type	Atoms	Z	Observed(°)	Ideal(°)
3	A	390	FMN	C4-C4A-C10	-8.55	114.47	119.94
3	A	390	FMN	C4A-C10-N10	-8.08	114.65	120.52
3	A	390	FMN	C4A-C4-N3	-6.37	115.19	123.52
3	A	390	FMN	N3-C2-N1	-5.91	117.74	127.69
3	A	390	FMN	C5A-C9A-N10	-2.91	115.40	117.58
3	A	390	FMN	O3P-P-O5'	-2.56	99.24	106.72
3	A	390	FMN	O3'-C3'-C4'	-2.50	102.23	108.73
4	A	890	MES	O2S-S-C8	2.06	108.32	106.87
4	A	890	MES	O3S-S-C8	2.23	109.62	104.99
3	A	390	FMN	O5'-P-O1P	2.77	114.04	107.08
3	A	390	FMN	C4-C4A-N5	2.83	122.14	118.70
3	A	390	FMN	O4'-C4'-C3'	3.01	116.70	108.96
4	A	890	MES	O1S-S-C8	3.52	109.36	106.87
3	A	390	FMN	C4A-N5-C5A	4.10	121.56	116.72
3	A	390	FMN	C4-N3-C2	12.96	125.97	115.16

There are no chirality outliers.

There are no torsion outliers.

There are no ring outliers.

2 monomers are involved in 5 short contacts:

Mol	Chain	Res	Type	Clashes	Symm-Clashes
3	A	390	FMN	4	0

Continued on next page...

Continued from previous page...

Mol	Chain	Res	Type	Clashes	Symm-Clashes
2	A	400	SO4	1	0

5.7 Other polymers [i](#)

There are no such residues in this entry.

5.8 Polymer linkage issues [i](#)

There are no chain breaks in this entry.

6 Fit of model and data [i](#)

6.1 Protein, DNA and RNA chains [i](#)

In the following table, the column labelled ‘#RSRZ> 2’ contains the number (and percentage) of RSRZ outliers, followed by percent RSRZ outliers for the chain as percentile scores relative to all X-ray entries and entries of similar resolution. The OWAB column contains the minimum, median, 95th percentile and maximum values of the occupancy-weighted average B-factor per residue. The column labelled ‘Q< 0.9’ lists the number of (and percentage) of residues with an average occupancy less than 0.9.

Mol	Chain	Analysed	<RSRZ>	#RSRZ>2		OWAB(Å ²)	Q<0.9
1	A	349/380 (91%)	0.13	20 (5%)	27 37	10, 19, 59, 67	6 (1%)

All (20) RSRZ outliers are listed below:

Mol	Chain	Res	Type	RSRZ
1	A	177	PRO	8.6
1	A	179	LEU	8.0
1	A	178	PHE	7.7
1	A	176	PRO	6.5
1	A	175	ILE	5.3
1	A	189	LEU	5.3
1	A	187	ILE	5.3
1	A	180	THR	5.0
1	A	188	ASP	4.7
1	A	203	LEU	4.5
1	A	205	SER	3.5
1	A	204	MET	3.4
1	A	193	ASP	3.4
1	A	200	GLN	3.3
1	A	186	GLY	3.2
1	A	199	MET	2.9
1	A	123	ASP	2.6
1	A	206	ARG	2.5
1	A	207	GLN	2.3
1	A	198	GLU	2.0

6.2 Non-standard residues in protein, DNA, RNA chains [i](#)

There are no non-standard protein/DNA/RNA residues in this entry.

6.3 Carbohydrates [i](#)

There are no carbohydrates in this entry.

6.4 Ligands [i](#)

In the following table, the Atoms column lists the number of modelled atoms in the group and the number defined in the chemical component dictionary. LLDF column lists the quality of electron density of the group with respect to its neighbouring residues in protein, DNA or RNA chains. The B-factors column lists the minimum, median, 95th percentile and maximum values of B factors of atoms in the group. The column labelled 'Q< 0.9' lists the number of atoms with occupancy less than 0.9.

Mol	Type	Chain	Res	Atoms	RSCC	RSR	LLDF	B-factors(\AA^2)	Q<0.9
2	SO4	A	400	5/5	0.89	0.22	2.78	41,41,44,44	0
4	MES	A	890	12/12	0.97	0.11	0.21	15,17,21,22	0
3	FMN	A	390	31/31	0.96	0.11	0.06	11,14,15,17	0

6.5 Other polymers [i](#)

There are no such residues in this entry.