



Full wwPDB X-ray Structure Validation Report ⓘ

Feb 1, 2016 – 09:18 AM GMT

PDB ID : 3HXB
Title : Engineered RabGGTase in complex with a peptidomimetic inhibitor (compound 6)
Authors : Guo, Z.; Alexandrov, K.; Waldmann, H.; Goody, R.S.; Blankenfeldt, W.
Deposited on : 2009-06-20
Resolution : 2.25 Å(reported)

This is a Full wwPDB X-ray Structure Validation Report for a publicly released PDB entry.
We welcome your comments at validation@mail.wwpdb.org
A user guide is available at
<http://wwpdb.org/validation/2016/XrayValidationReportHelp>
with specific help available everywhere you see the ⓘ symbol.

The following versions of software and data (see [references ⓘ](#)) were used in the production of this report:

MolProbity : 4.02b-467
Mogul : 1.7 (RC4), CSD as536be (2015)
Xtriage (Phenix) : 1.9-1692
EDS : rb-20026688
Percentile statistics : 20151230.v01 (using entries in the PDB archive December 30th 2015)
Refmac : 5.8.0135
CCP4 : 6.5.0
Ideal geometry (proteins) : Engh & Huber (2001)
Ideal geometry (DNA, RNA) : Parkinson et al. (1996)
Validation Pipeline (wwPDB-VP) : trunk26865

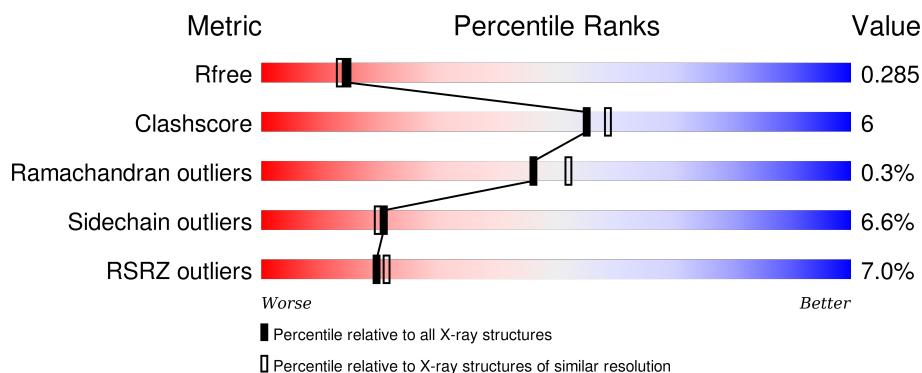
1 Overall quality at a glance

The following experimental techniques were used to determine the structure:

X-RAY DIFFRACTION

The reported resolution of this entry is 2.25 Å.

Percentile scores (ranging between 0-100) for global validation metrics of the entry are shown in the following graphic. The table shows the number of entries on which the scores are based.



Metric	Whole archive (#Entries)	Similar resolution (#Entries, resolution range(Å))
R_{free}	91344	1640 (2.28-2.24)
Clashscore	102246	1095 (2.26-2.26)
Ramachandran outliers	100387	1063 (2.26-2.26)
Sidechain outliers	100360	1063 (2.26-2.26)
RSRZ outliers	91569	1647 (2.28-2.24)

The table below summarises the geometric issues observed across the polymeric chains and their fit to the electron density. The red, orange, yellow and green segments on the lower bar indicate the fraction of residues that contain outliers for ≥ 3 , 2, 1 and 0 types of geometric quality criteria. A grey segment represents the fraction of residues that are not modelled. The numeric value for each fraction is indicated below the corresponding segment, with a dot representing fractions $\leq 5\%$. The upper red bar (where present) indicates the fraction of residues that have poor fit to the electron density. The numeric value is given above the bar.

Mol	Chain	Length	Quality of chain
1	A	331	<div> <div>8%</div> <div> <div></div> <div>80%</div> <div>11%</div> <div>7%</div> </div> </div>
2	B	331	<div> <div>5%</div> <div> <div></div> <div>78%</div> <div>17%</div> <div></div> </div> </div>

The following table lists non-polymeric compounds, carbohydrate monomers and non-standard residues in protein, DNA, RNA chains that are outliers for geometric or electron-density-fit criteria:

Mol	Type	Chain	Res	Chirality	Geometry	Clashes	Electron density
3	BD5	B	332	-	-	-	X

2 Entry composition

There are 5 unique types of molecules in this entry. The entry contains 5090 atoms, of which 0 are hydrogens and 0 are deuteriums.

In the tables below, the ZeroOcc column contains the number of atoms modelled with zero occupancy, the AltConf column contains the number of residues with at least one atom in alternate conformation and the Trace column contains the number of residues modelled with at most 2 atoms.

- Molecule 1 is a protein called Geranylgeranyl transferase type-2 subunit alpha.

Mol	Chain	Residues	Atoms					ZeroOcc	AltConf	Trace
1	A	308	Total	C	N	O	S	0	0	0
			2422	1548	415	447	12			

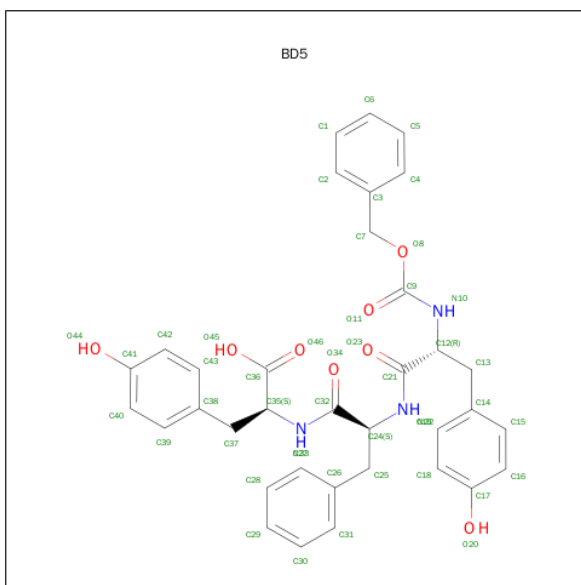
There are 5 discrepancies between the modelled and reference sequences:

Chain	Residue	Modelled	Actual	Comment	Reference
A	0	HIS	-	EXPRESSION TAG	UNP Q08602
A	238	ALA	-	LINKER	UNP Q08602
A	239	GLY	-	LINKER	UNP Q08602
A	240	SER	-	LINKER	UNP Q08602
A	241	GLY	-	LINKER	UNP Q08602

- Molecule 2 is a protein called Geranylgeranyl transferase type-2 subunit beta.

Mol	Chain	Residues	Atoms					ZeroOcc	AltConf	Trace
2	B	324	Total	C	N	O	S	0	0	0
			2496	1600	416	460	20			

- Molecule 3 is N-[(BENZYLOXY)CARBONYL]-D-TYROSYL-L-PHENYLALANYL-L-TYROSINE (three-letter code: BD5) (formula: C₃₅H₃₅N₃O₈).



Mol	Chain	Residues	Atoms				ZeroOcc	AltConf
3	B	1	Total	C	N	O	0	0
			46	35	3	8		

- Molecule 4 is ZINC ION (three-letter code: ZN) (formula: Zn).

Mol	Chain	Residues	Atoms	ZeroOcc	AltConf
4	B	1	Total Zn 1 1	0	0

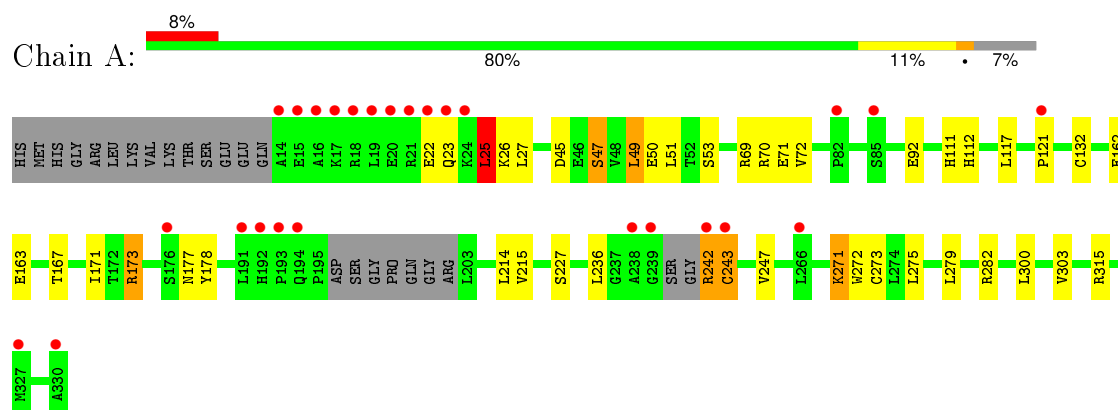
- Molecule 5 is water.

Mol	Chain	Residues	Atoms	ZeroOcc	AltConf
5	A	60	Total O 60 60	0	0
5	B	65	Total O 65 65	0	0

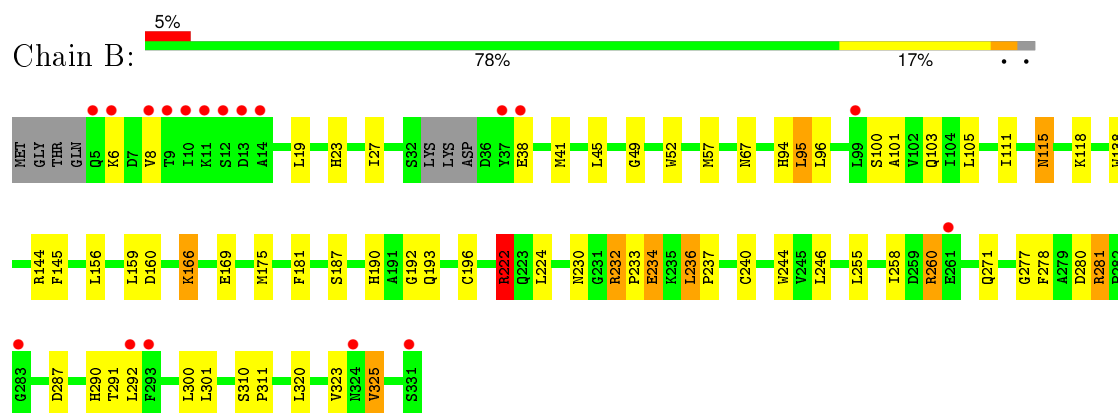
3 Residue-property plots [i](#)

These plots are drawn for all protein, RNA and DNA chains in the entry. The first graphic for a chain summarises the proportions of errors displayed in the second graphic. The second graphic shows the sequence view annotated by issues in geometry and electron density. Residues are color-coded according to the number of geometric quality criteria for which they contain at least one outlier: green = 0, yellow = 1, orange = 2 and red = 3 or more. A red dot above a residue indicates a poor fit to the electron density ($RSRZ > 2$). Stretches of 2 or more consecutive residues without any outlier are shown as a green connector. Residues present in the sample, but not in the model, are shown in grey.

- Molecule 1: Geranylgeranyl transferase type-2 subunit alpha



- Molecule 2: Geranylgeranyl transferase type-2 subunit beta



4 Data and refinement statistics

Property	Value	Source
Space group	P 21 21 21	Depositor
Cell constants a, b, c, α , β , γ	66.49 Å 90.61 Å 115.20 Å 90.00° 90.00° 90.00°	Depositor
Resolution (Å)	29.40 – 2.25 29.29 – 2.25	Depositor EDS
% Data completeness (in resolution range)	97.6 (29.40-2.25) 97.6 (29.29-2.25)	Depositor EDS
R_{merge}	(Not available)	Depositor
R_{sym}	0.05	Depositor
$\langle I/\sigma(I) \rangle$ ¹	8.70 (at 2.24 Å)	Xtriage
Refinement program	REFMAC 5.2.0005	Depositor
R, R_{free}	0.207 , 0.278 0.214 , 0.285	Depositor DCC
R_{free} test set	1634 reflections (5.22%)	DCC
Wilson B-factor (Å ²)	35.8	Xtriage
Anisotropy	0.148	Xtriage
Bulk solvent k_{sol} (e/Å ³), B_{sol} (Å ²)	0.32 , 40.6	EDS
Estimated twinning fraction	No twinning to report.	Xtriage
L-test for twinning ²	$\langle L \rangle = 0.49$, $\langle L^2 \rangle = 0.32$	Xtriage
Outliers	0 of 32914 reflections	Xtriage
F_o, F_c correlation	0.94	EDS
Total number of atoms	5090	wwPDB-VP
Average B, all atoms (Å ²)	50.0	wwPDB-VP

Xtriage's analysis on translational NCS is as follows: *The largest off-origin peak in the Patterson function is 4.19% of the height of the origin peak. No significant pseudotranslation is detected.*

¹Intensities estimated from amplitudes.

²Theoretical values of $\langle |L| \rangle$, $\langle L^2 \rangle$ for acentric reflections are 0.5, 0.375 respectively for untwinned datasets, and 0.333, 0.2 for perfectly twinned datasets.

5 Model quality

5.1 Standard geometry

Bond lengths and bond angles in the following residue types are not validated in this section: BD5, ZN

The Z score for a bond length (or angle) is the number of standard deviations the observed value is removed from the expected value. A bond length (or angle) with $|Z| > 5$ is considered an outlier worth inspection. RMSZ is the root-mean-square of all Z scores of the bond lengths (or angles).

Mol	Chain	Bond lengths		Bond angles	
		RMSZ	$\# Z > 5$	RMSZ	$\# Z > 5$
1	A	0.79	1/2479 (0.0%)	0.78	5/3374 (0.1%)
2	B	0.88	3/2554 (0.1%)	0.87	7/3467 (0.2%)
All	All	0.84	4/5033 (0.1%)	0.83	12/6841 (0.2%)

Chiral center outliers are detected by calculating the chiral volume of a chiral center and verifying if the center is modelled as a planar moiety or with the opposite hand. A planarity outlier is detected by checking planarity of atoms in a peptide group, atoms in a mainchain group or atoms of a sidechain that are expected to be planar.

Mol	Chain	#Chirality outliers	#Planarity outliers
1	A	0	2

All (4) bond length outliers are listed below:

Mol	Chain	Res	Type	Atoms	Z	Observed(Å)	Ideal(Å)
2	B	196	CYS	CB-SG	-6.07	1.72	1.82
2	B	280	ASP	CB-CG	-5.92	1.39	1.51
1	A	132	CYS	CB-SG	-5.67	1.72	1.81
2	B	240	CYS	CB-SG	-5.62	1.72	1.81

All (12) bond angle outliers are listed below:

Mol	Chain	Res	Type	Atoms	Z	Observed(°)	Ideal(°)
1	A	315	ARG	NE-CZ-NH2	-7.74	116.43	120.30
2	B	232	ARG	NE-CZ-NH1	6.79	123.70	120.30
2	B	280	ASP	CB-CG-OD1	-6.75	112.22	118.30
2	B	222	ARG	NE-CZ-NH2	-6.42	117.09	120.30
1	A	69	ARG	NE-CZ-NH2	-6.41	117.09	120.30
2	B	232	ARG	NE-CZ-NH2	-6.35	117.12	120.30
1	A	69	ARG	NE-CZ-NH1	6.00	123.30	120.30

Continued on next page...

Continued from previous page...

Mol	Chain	Res	Type	Atoms	Z	Observed(°)	Ideal(°)
1	A	315	ARG	NE-CZ-NH1	5.55	123.07	120.30
2	B	222	ARG	NE-CZ-NH1	5.48	123.04	120.30
1	A	243	CYS	N-CA-C	5.28	125.26	111.00
2	B	144	ARG	NE-CZ-NH1	5.12	122.86	120.30
2	B	280	ASP	N-CA-CB	-5.03	101.55	110.60

There are no chirality outliers.

All (2) planarity outliers are listed below:

Mol	Chain	Res	Type	Group
1	A	242	ARG	Peptide
1	A	243	CYS	Peptide

5.2 Too-close contacts ⓘ

In the following table, the Non-H and H(model) columns list the number of non-hydrogen atoms and hydrogen atoms in the chain respectively. The H(added) column lists the number of hydrogen atoms added and optimized by MolProbity. The Clashes column lists the number of clashes within the asymmetric unit, whereas Symm-Clashes lists symmetry related clashes.

Mol	Chain	Non-H	H(model)	H(added)	Clashes	Symm-Clashes
1	A	2422	0	2310	21	0
2	B	2496	0	2432	41	0
3	B	46	0	32	5	0
4	B	1	0	0	0	0
5	A	60	0	0	6	0
5	B	65	0	0	3	0
All	All	5090	0	4774	61	0

The all-atom clashscore is defined as the number of clashes found per 1000 atoms (including hydrogen atoms). The all-atom clashscore for this structure is 6.

All (61) close contacts within the same asymmetric unit are listed below, sorted by their clash magnitude.

Atom-1	Atom-2	Interatomic distance (Å)	Clash overlap (Å)
2:B:244:TRP:CH2	3:B:332:BD5:H27	2.08	0.88
2:B:94:HIS:HD2	2:B:96:LEU:H	1.40	0.69
1:A:171:ILE:HA	1:A:177:ASN:ND2	2.08	0.68
1:A:282:ARG:CD	5:A:332:HOH:O	2.45	0.64

Continued on next page...

Continued from previous page...

Atom-1	Atom-2	Interatomic distance (Å)	Clash overlap (Å)
1:A:282:ARG:HD2	5:A:332:HOH:O	1.98	0.64
2:B:278:PHE:HB2	2:B:291:THR:HA	1.82	0.62
2:B:193:GLN:NE2	3:B:332:BD5:H30	2.20	0.56
1:A:279:LEU:O	5:A:384:HOH:O	2.18	0.56
1:A:70:ARG:HH11	1:A:112:HIS:HD2	1.54	0.55
2:B:160:ASP:OD2	5:B:374:HOH:O	2.18	0.54
2:B:115:ASN:C	2:B:115:ASN:HD22	2.10	0.54
2:B:95:LEU:HD23	2:B:145:PHE:HB3	1.90	0.54
2:B:190:HIS:CD2	2:B:192:GLY:H	2.25	0.54
1:A:25:LEU:O	1:A:26:LYS:C	2.44	0.53
1:A:92:GLU:OE2	1:A:112:HIS:HE1	1.90	0.53
1:A:45:ASP:OD2	1:A:47:SER:OG	2.28	0.52
1:A:70:ARG:HH11	1:A:112:HIS:CD2	2.29	0.51
2:B:49:GLY:HA2	2:B:52:TRP:CE3	2.46	0.51
2:B:222:ARG:HD3	2:B:230:ASN:OD1	2.12	0.49
2:B:6:LYS:HB3	2:B:236:LEU:HD13	1.93	0.49
2:B:94:HIS:CD2	2:B:96:LEU:H	2.27	0.49
2:B:52:TRP:HA	2:B:292:LEU:HD22	1.95	0.49
1:A:71:GLU:O	5:A:367:HOH:O	2.19	0.48
2:B:323:VAL:HG23	2:B:325:VAL:CG1	2.43	0.48
2:B:100:SER:HA	2:B:103:GLN:HE21	1.78	0.48
2:B:244:TRP:CH2	3:B:332:BD5:C27	2.88	0.48
1:A:163:GLU:O	1:A:167:THR:HG23	2.13	0.48
1:A:271:LYS:HE2	1:A:272:TRP:CE2	2.48	0.48
1:A:111:HIS:HE1	2:B:138:TRP:O	1.97	0.47
2:B:232:ARG:HB2	2:B:233:PRO:CD	2.44	0.47
2:B:8:VAL:HG11	2:B:281:ARG:HD3	1.97	0.47
2:B:287:ASP:CG	2:B:290:HIS:HD1	2.17	0.47
1:A:22:GLU:O	1:A:25:LEU:HB2	2.15	0.47
2:B:101:ALA:O	2:B:105:LEU:HG	2.15	0.46
2:B:234:GLU:N	2:B:234:GLU:OE2	2.48	0.46
2:B:310:SER:HB2	2:B:320:LEU:HD12	1.97	0.46
3:B:332:BD5:H16	5:B:367:HOH:O	2.15	0.46
2:B:325:VAL:HG22	2:B:325:VAL:O	2.14	0.46
2:B:166:LYS:NZ	2:B:169:GLU:OE1	2.35	0.46
2:B:23:HIS:HD1	2:B:277:GLY:N	2.13	0.46
2:B:234:GLU:CA	2:B:234:GLU:OE2	2.63	0.46
2:B:19:LEU:H	2:B:271:GLN:HE22	1.64	0.45
2:B:224:LEU:CD1	2:B:237:PRO:HD3	2.46	0.45
1:A:173:ARG:NH1	5:A:362:HOH:O	2.50	0.45
1:A:49:LEU:HD13	1:A:72:VAL:HG11	1.98	0.44

Continued on next page...

Continued from previous page...

Atom-1	Atom-2	Interatomic distance (Å)	Clash overlap (Å)
2:B:260:ARG:HG3	2:B:301:LEU:HD22	2.00	0.44
2:B:187:SER:HB3	5:B:368:HOH:O	2.18	0.43
2:B:38:GLU:HA	2:B:41:MET:HB2	2.01	0.43
2:B:300:LEU:HD11	2:B:311:PRO:HB3	1.99	0.43
1:A:25:LEU:O	1:A:27:LEU:N	2.51	0.43
1:A:282:ARG:HD3	5:A:332:HOH:O	2.16	0.43
2:B:105:LEU:HB3	2:B:111:ILE:HA	2.01	0.42
1:A:171:ILE:HA	1:A:177:ASN:HD22	1.81	0.42
2:B:246:LEU:HD11	2:B:255:LEU:HD11	2.02	0.41
2:B:45:LEU:O	2:B:45:LEU:HD12	2.19	0.41
2:B:27:ILE:HG21	2:B:57:MET:HG2	2.01	0.41
2:B:244:TRP:HH2	3:B:332:BD5:H27	1.74	0.41
1:A:111:HIS:CE1	2:B:138:TRP:O	2.73	0.41
2:B:175:MET:HE2	2:B:181:PHE:CZ	2.55	0.40
2:B:246:LEU:CD1	2:B:255:LEU:CD1	3.00	0.40
1:A:178:TYR:HA	1:A:227:SER:HB2	2.02	0.40

There are no symmetry-related clashes.

5.3 Torsion angles

5.3.1 Protein backbone

In the following table, the Percentiles column shows the percent Ramachandran outliers of the chain as a percentile score with respect to all X-ray entries followed by that with respect to entries of similar resolution.

The Analysed column shows the number of residues for which the backbone conformation was analysed, and the total number of residues.

Mol	Chain	Analysed	Favoured	Allowed	Outliers	Percentiles	
1	A	302/331 (91%)	291 (96%)	9 (3%)	2 (1%)	26	26
2	B	320/331 (97%)	311 (97%)	9 (3%)	0	100	100
All	All	622/662 (94%)	602 (97%)	18 (3%)	2 (0%)	46	52

All (2) Ramachandran outliers are listed below:

Mol	Chain	Res	Type
1	A	121	PRO
1	A	25	LEU

5.3.2 Protein sidechains ⓘ

In the following table, the Percentiles column shows the percent sidechain outliers of the chain as a percentile score with respect to all X-ray entries followed by that with respect to entries of similar resolution.

The Analysed column shows the number of residues for which the sidechain conformation was analysed, and the total number of residues.

Mol	Chain	Analysed	Rotameric	Outliers	Percentiles	
1	A	249/293 (85%)	229 (92%)	20 (8%)	15	13
2	B	268/284 (94%)	254 (95%)	14 (5%)	29	31
All	All	517/577 (90%)	483 (93%)	34 (7%)	21	20

All (34) residues with a non-rotameric sidechain are listed below:

Mol	Chain	Res	Type
1	A	23	GLN
1	A	25	LEU
1	A	47	SER
1	A	49	LEU
1	A	50	GLU
1	A	51	LEU
1	A	53	SER
1	A	117	LEU
1	A	162	GLU
1	A	173	ARG
1	A	214	LEU
1	A	215	VAL
1	A	236	LEU
1	A	242	ARG
1	A	247	VAL
1	A	271	LYS
1	A	273	CYS
1	A	275	LEU
1	A	300	LEU
1	A	303	VAL
2	B	67	ASN
2	B	95	LEU
2	B	115	ASN
2	B	118	LYS
2	B	156	LEU
2	B	159	LEU
2	B	166	LYS

Continued on next page...

Continued from previous page...

Mol	Chain	Res	Type
2	B	222	ARG
2	B	234	GLU
2	B	236	LEU
2	B	258	ILE
2	B	260	ARG
2	B	281	ARG
2	B	325	VAL

Some sidechains can be flipped to improve hydrogen bonding and reduce clashes. All (13) such sidechains are listed below:

Mol	Chain	Res	Type
1	A	40	GLN
1	A	111	HIS
1	A	112	HIS
1	A	264	GLN
2	B	67	ASN
2	B	91	HIS
2	B	94	HIS
2	B	103	GLN
2	B	115	ASN
2	B	190	HIS
2	B	193	GLN
2	B	208	HIS
2	B	271	GLN

5.3.3 RNA ⓘ

There are no RNA molecules in this entry.

5.4 Non-standard residues in protein, DNA, RNA chains ⓘ

There are no non-standard protein/DNA/RNA residues in this entry.

5.5 Carbohydrates ⓘ

There are no carbohydrates in this entry.

5.6 Ligand geometry

Of 2 ligands modelled in this entry, 1 is monoatomic - leaving 1 for Mogul analysis.

In the following table, the Counts columns list the number of bonds (or angles) for which Mogul statistics could be retrieved, the number of bonds (or angles) that are observed in the model and the number of bonds (or angles) that are defined in the chemical component dictionary. The Link column lists molecule types, if any, to which the group is linked. The Z score for a bond length (or angle) is the number of standard deviations the observed value is removed from the expected value. A bond length (or angle) with $|Z| > 2$ is considered an outlier worth inspection. RMSZ is the root-mean-square of all Z scores of the bond lengths (or angles).

Mol	Type	Chain	Res	Link	Bond lengths			Bond angles		
					Counts	RMSZ	# $ Z > 2$	Counts	RMSZ	# $ Z > 2$
3	BD5	B	332	-	46,49,49	1.27	2 (4%)	61,65,65	1.54	9 (14%)

In the following table, the Chirals column lists the number of chiral outliers, the number of chiral centers analysed, the number of these observed in the model and the number defined in the chemical component dictionary. Similar counts are reported in the Torsion and Rings columns. '-' means no outliers of that kind were identified.

Mol	Type	Chain	Res	Link	Chirals	Torsions	Rings
3	BD5	B	332	-	-	0/37/41/41	0/4/4/4

All (2) bond length outliers are listed below:

Mol	Chain	Res	Type	Atoms	Z	Observed(Å)	Ideal(Å)
3	B	332	BD5	C7-C3	-5.11	1.38	1.50
3	B	332	BD5	C12-N10	3.02	1.52	1.45

All (9) bond angle outliers are listed below:

Mol	Chain	Res	Type	Atoms	Z	Observed(°)	Ideal(°)
3	B	332	BD5	O8-C9-O11	-3.40	117.22	124.22
3	B	332	BD5	C5-C4-C3	-2.31	116.98	120.65
3	B	332	BD5	C25-C24-N22	2.03	115.05	110.80
3	B	332	BD5	C37-C35-N33	2.60	115.94	108.23
3	B	332	BD5	C32-C24-N22	2.77	119.08	111.26
3	B	332	BD5	C13-C12-C21	3.08	119.17	110.20
3	B	332	BD5	C13-C12-N10	3.18	117.46	110.80
3	B	332	BD5	C12-N10-C9	4.34	132.85	121.12
3	B	332	BD5	O8-C7-C3	5.01	121.97	109.36

There are no chirality outliers.

There are no torsion outliers.

There are no ring outliers.

1 monomer is involved in 5 short contacts:

Mol	Chain	Res	Type	Clashes	Symm-Clashes
3	B	332	BD5	5	0

5.7 Other polymers [i](#)

There are no such residues in this entry.

5.8 Polymer linkage issues [i](#)

There are no chain breaks in this entry.

6 Fit of model and data ⓘ

6.1 Protein, DNA and RNA chains ⓘ

In the following table, the column labelled ‘#RSRZ> 2’ contains the number (and percentage) of RSRZ outliers, followed by percent RSRZ outliers for the chain as percentile scores relative to all X-ray entries and entries of similar resolution. The OWAB column contains the minimum, median, 95th percentile and maximum values of the occupancy-weighted average B-factor per residue. The column labelled ‘Q< 0.9’ lists the number of (and percentage) of residues with an average occupancy less than 0.9.

Mol	Chain	Analysed	<RSRZ>	#RSRZ>2		OWAB(Å ²)	Q<0.9
1	A	308/331 (93%)	0.34	26 (8%)	14 15	28, 56, 88, 117	0
2	B	324/331 (97%)	0.05	18 (5%)	28 31	21, 40, 71, 91	0
All	All	632/662 (95%)	0.19	44 (6%)	19 21	21, 48, 85, 117	0

All (44) RSRZ outliers are listed below:

Mol	Chain	Res	Type	RSRZ
1	A	16	ALA	10.9
2	B	12	SER	7.2
1	A	14	ALA	7.1
1	A	21	ARG	6.8
1	A	18	ARG	6.0
1	A	19	LEU	6.0
1	A	15	GLU	5.6
1	A	20	GLU	5.2
2	B	10	ILE	5.1
2	B	331	SER	4.9
1	A	17	LYS	4.7
1	A	176	SER	4.0
1	A	193	PRO	3.9
1	A	327	MET	3.9
2	B	8	VAL	3.6
1	A	23	GLN	3.6
1	A	192	HIS	3.4
1	A	24	LYS	3.3
2	B	261	GLU	3.1
2	B	9	THR	3.1
1	A	266	LEU	3.0
1	A	82	PRO	2.9
1	A	242	ARG	2.9
2	B	6	LYS	2.8

Continued on next page...

Continued from previous page...

Mol	Chain	Res	Type	RSRZ
1	A	238	ALA	2.8
1	A	239	GLY	2.8
1	A	191	LEU	2.6
2	B	292	LEU	2.6
2	B	11	LYS	2.5
1	A	121	PRO	2.3
2	B	324	ASN	2.3
2	B	13	ASP	2.3
1	A	22	GLU	2.3
1	A	85	SER	2.3
1	A	194	GLN	2.3
2	B	283	GLY	2.2
2	B	5	GLN	2.2
1	A	330	ALA	2.2
2	B	38	GLU	2.2
1	A	243	CYS	2.2
2	B	14	ALA	2.2
2	B	37	TYR	2.1
2	B	293	PHE	2.1
2	B	99	LEU	2.1

6.2 Non-standard residues in protein, DNA, RNA chains [i](#)

There are no non-standard protein/DNA/RNA residues in this entry.

6.3 Carbohydrates [i](#)

There are no carbohydrates in this entry.

6.4 Ligands [i](#)

In the following table, the Atoms column lists the number of modelled atoms in the group and the number defined in the chemical component dictionary. LLDF column lists the quality of electron density of the group with respect to its neighbouring residues in protein, DNA or RNA chains. The B-factors column lists the minimum, median, 95th percentile and maximum values of B factors of atoms in the group. The column labelled 'Q< 0.9' lists the number of atoms with occupancy less than 0.9.

Mol	Type	Chain	Res	Atoms	RSCC	RSR	LLDF	B-factors(Å ²)	Q<0.9
3	BD5	B	332	46/46	0.64	0.32	5.71	62,83,124,134	0
4	ZN	B	333	1/1	0.88	0.07	-4.35	109,109,109,109	0

6.5 Other polymers

There are no such residues in this entry.