



Full wwPDB X-ray Structure Validation Report ⓘ

Feb 1, 2016 – 09:20 AM GMT

PDB ID : 3HYX
Title : 3-D X-Ray structure of the sulfide:quinone oxidoreductase from Aquifex aeolicus in complex with Aurachin C
Authors : Marcia, M.; Ermler, U.; Peng, G.H.; Michel, H.
Deposited on : 2009-06-23
Resolution : 2.90 Å(reported)

This is a Full wwPDB X-ray Structure Validation Report for a publicly released PDB entry.
We welcome your comments at validation@mail.wwpdb.org
A user guide is available at
<http://wwpdb.org/validation/2016/XrayValidationReportHelp>
with specific help available everywhere you see the ⓘ symbol.

The following versions of software and data (see [references ⓘ](#)) were used in the production of this report:

MolProbity : 4.02b-467
Mogul : 1.7 (RC4), CSD as536be (2015)
Xtriage (Phenix) : 1.9-1692
EDS : rb-20026688
Percentile statistics : 20151230.v01 (using entries in the PDB archive December 30th 2015)
Refmac : 5.8.0135
CCP4 : 6.5.0
Ideal geometry (proteins) : Engh & Huber (2001)
Ideal geometry (DNA, RNA) : Parkinson et al. (1996)
Validation Pipeline (wwPDB-VP) : trunk26865

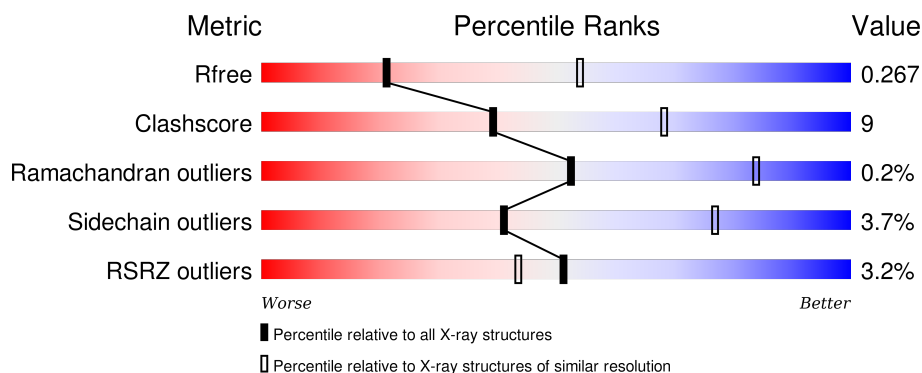
1 Overall quality at a glance

The following experimental techniques were used to determine the structure:

X-RAY DIFFRACTION

The reported resolution of this entry is 2.90 Å.

Percentile scores (ranging between 0-100) for global validation metrics of the entry are shown in the following graphic. The table shows the number of entries on which the scores are based.




Metric	Whole archive (#Entries)	Similar resolution (#Entries, resolution range(Å))
R_{free}	91344	1451 (2.90-2.90)
Clashscore	102246	1668 (2.90-2.90)
Ramachandran outliers	100387	1630 (2.90-2.90)
Sidechain outliers	100360	1632 (2.90-2.90)
RSRZ outliers	91569	1456 (2.90-2.90)

The table below summarises the geometric issues observed across the polymeric chains and their fit to the electron density. The red, orange, yellow and green segments on the lower bar indicate the fraction of residues that contain outliers for ≥ 3 , 2, 1 and 0 types of geometric quality criteria. A grey segment represents the fraction of residues that are not modelled. The numeric value for each fraction is indicated below the corresponding segment, with a dot representing fractions $\leq 5\%$. The upper red bar (where present) indicates the fraction of residues that have poor fit to the electron density. The numeric value is given above the bar.

Mol	Chain	Length	Quality of chain
1	A	430	<div> <div>2%</div> <div>83%</div> <div>16%</div> </div>
1	B	430	<div> <div>2%</div> <div>83%</div> <div>16%</div> </div>
1	C	430	<div> <div>%</div> <div>79%</div> <div>20%</div> </div>
1	D	430	<div> <div>9%</div> <div>82%</div> <div>17%</div> </div>
1	E	430	<div> <div>3%</div> <div>82%</div> <div>17%</div> </div>

Continued on next page...

Continued from previous page...

Mol	Chain	Length	Quality of chain
1	F	430	

The following table lists non-polymeric compounds, carbohydrate monomers and non-standard residues in protein, DNA, RNA chains that are outliers for geometric or electron-density-fit criteria:

Mol	Type	Chain	Res	Chirality	Geometry	Clashes	Electron density
2	SO4	D	432	-	-	X	-
2	SO4	E	434	-	-	X	-
4	AUK	A	501	-	-	-	X
4	AUK	B	501	-	-	-	X
4	AUK	C	501	-	-	X	X
4	AUK	D	501	-	-	X	X
4	AUK	E	501	-	-	-	X
4	AUK	F	501	-	-	-	X
5	LMT	A	600	-	-	-	X
5	LMT	B	600	-	-	-	X
5	LMT	C	600	-	-	-	X
5	LMT	D	600	-	-	-	X
5	LMT	E	600	-	-	X	X
5	LMT	F	600	-	-	-	X
6	H2S	A	700	-	-	-	X
6	H2S	B	700	-	-	-	X
6	H2S	C	700	-	-	-	X
6	H2S	E	700	-	-	-	X
6	H2S	F	700	-	-	-	X
7	PS9	A	800	-	-	X	X
7	PS9	B	800	-	-	X	X
7	PS9	C	800	-	-	X	X
7	PS9	D	800	-	-	X	X
7	PS9	E	800	-	-	X	X
7	PS9	F	800	-	-	-	X

2 Entry composition [i](#)

There are 8 unique types of molecules in this entry. The entry contains 21163 atoms, of which 0 are hydrogens and 0 are deuteriums.

In the tables below, the ZeroOcc column contains the number of atoms modelled with zero occupancy, the AltConf column contains the number of residues with at least one atom in alternate conformation and the Trace column contains the number of residues modelled with at most 2 atoms.

- Molecule 1 is a protein called Sulfide-quinone reductase.

Mol	Chain	Residues	Atoms					ZeroOcc	AltConf	Trace
1	A	429	Total	C	N	O	S	0	4	0
			3345	2165	553	604	23			
1	B	429	Total	C	N	O	S	0	6	0
			3357	2173	553	608	23			
1	C	429	Total	C	N	O	S	0	5	0
			3351	2169	553	606	23			
1	D	429	Total	C	N	O	S	0	5	0
			3351	2169	553	606	23			
1	E	429	Total	C	N	O	S	0	5	0
			3351	2169	553	606	23			
1	F	429	Total	C	N	O	S	0	4	0
			3345	2165	553	604	23			

- Molecule 2 is SULFATE ION (three-letter code: SO4) (formula: O₄S).



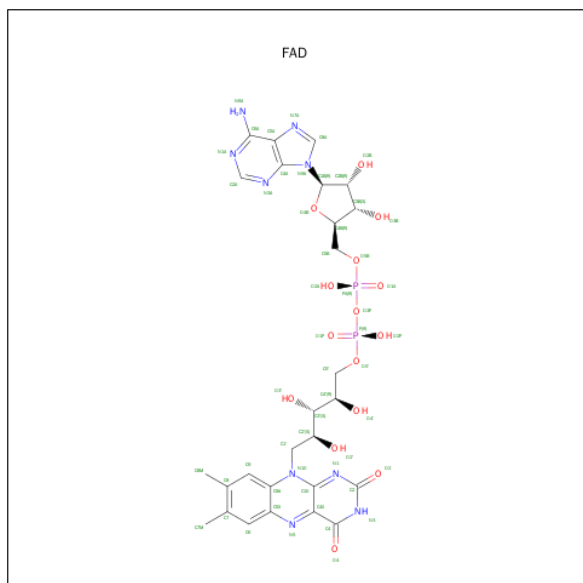
Mol	Chain	Residues	Atoms	ZeroOcc	AltConf
2	A	1	Total O S 5 4 1	0	0
2	A	1	Total O S 5 4 1	0	0
2	A	1	Total O S 5 4 1	0	0
2	B	1	Total O S 5 4 1	0	0
2	B	1	Total O S 5 4 1	0	0
2	B	1	Total O S 5 4 1	0	0
2	B	1	Total O S 5 4 1	0	0
2	B	1	Total O S 5 4 1	0	0
2	B	1	Total O S 5 4 1	0	0
2	C	1	Total O S 5 4 1	0	0
2	C	1	Total O S 5 4 1	0	0
2	C	1	Total O S 5 4 1	0	0
2	C	1	Total O S 5 4 1	0	0
2	D	1	Total O S 5 4 1	0	0
2	D	1	Total O S 5 4 1	0	0
2	D	1	Total O S 5 4 1	0	0
2	D	1	Total O S 5 4 1	0	0
2	D	1	Total O S 5 4 1	0	0
2	D	1	Total O S 5 4 1	0	0
2	E	1	Total O S 5 4 1	0	0
2	E	1	Total O S 5 4 1	0	0
2	E	1	Total O S 5 4 1	0	0
2	E	1	Total O S 5 4 1	0	0
2	E	1	Total O S 5 4 1	0	0

Continued on next page...

Continued from previous page...

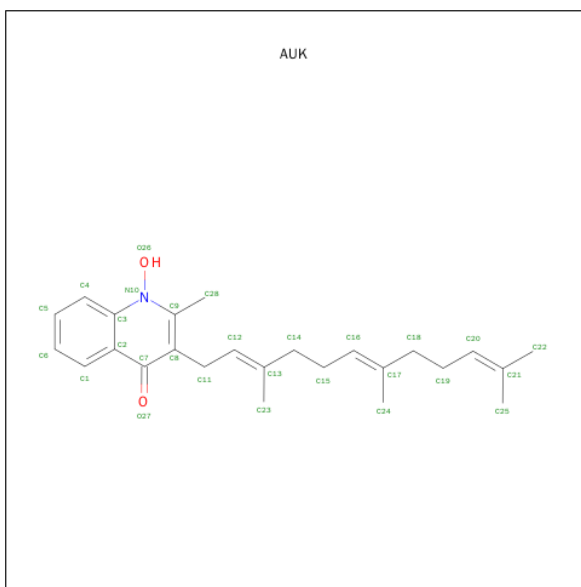
Mol	Chain	Residues	Atoms			ZeroOcc	AltConf
2	F	1	Total	O	S	0	0
			5	4	1		
2	F	1	Total	O	S	0	0
			5	4	1		

- Molecule 3 is FLAVIN-ADENINE DINUCLEOTIDE (three-letter code: FAD) (formula: $C_{27}H_{33}N_9O_{15}P_2$).



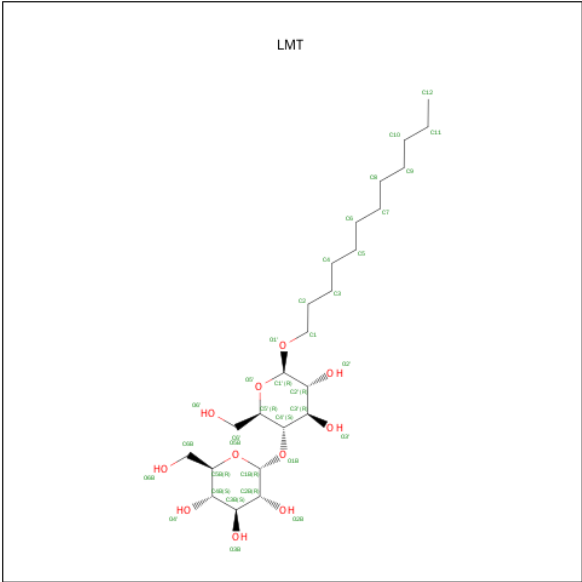
Mol	Chain	Residues	Atoms					ZeroOcc	AltConf
3	A	1	Total	C	N	O	P	0	0
			53	27	9	15	2		
3	B	1	Total	C	N	O	P	0	0
			53	27	9	15	2		
3	C	1	Total	C	N	O	P	0	0
			53	27	9	15	2		
3	D	1	Total	C	N	O	P	0	0
			53	27	9	15	2		
3	E	1	Total	C	N	O	P	0	0
			53	27	9	15	2		
3	F	1	Total	C	N	O	P	0	0
			53	27	9	15	2		

- Molecule 4 is 1-HYDROXY-2-METHYL-3-[(2E,6E)-3,7,11-TRIMETHYLDODECA-2,6,10-TRIEN-1-YL]QUINOLIN-4(1H)-ONE (three-letter code: AUK) (formula: $C_{25}H_{33}NO_2$).



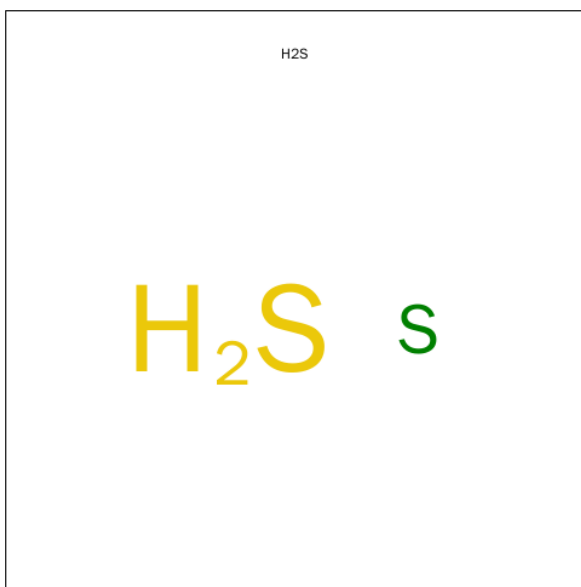
Mol	Chain	Residues	Atoms				ZeroOcc	AltConf
4	A	1	Total	C	N	O	0	0
			28	25	1	2		
4	B	1	Total	C	N	O	0	0
			28	25	1	2		
4	C	1	Total	C	N	O	0	0
			28	25	1	2		
4	D	1	Total	C	N	O	0	0
			28	25	1	2		
4	E	1	Total	C	N	O	0	0
			28	25	1	2		
4	F	1	Total	C	N	O	0	0
			28	25	1	2		

- Molecule 5 is DODECYL-BETA-D-MALTOSE (three-letter code: LMT) (formula: $C_{24}H_{46}O_{11}$).



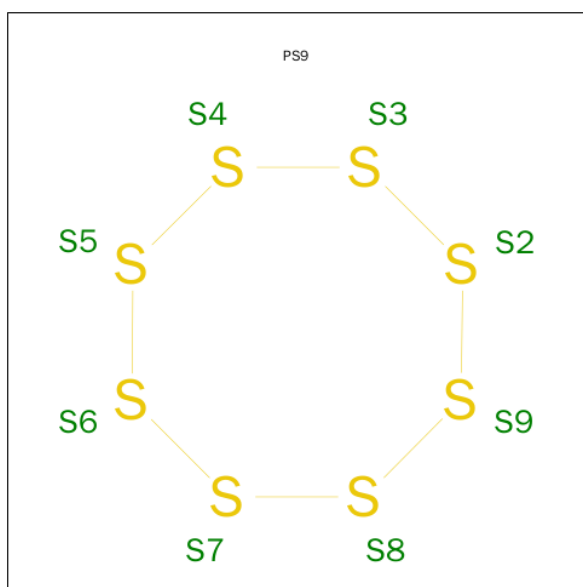
Mol	Chain	Residues	Atoms			ZeroOcc	AltConf
5	A	1	Total	C	O	0	0
			35	24	11		
5	B	1	Total	C	O	0	0
			35	24	11		
5	C	1	Total	C	O	0	0
			35	24	11		
5	D	1	Total	C	O	0	0
			35	24	11		
5	E	1	Total	C	O	0	0
			35	24	11		
5	F	1	Total	C	O	0	0
			35	24	11		

- Molecule 6 is HYDROSULFURIC ACID (three-letter code: H2S) (formula: H₂S).



Mol	Chain	Residues	Atoms	ZeroOcc	AltConf
6	A	1	Total S 1 1	0	0
6	B	1	Total S 1 1	0	0
6	C	1	Total S 1 1	0	0
6	D	1	Total S 1 1	0	0
6	E	1	Total S 1 1	0	0
6	F	1	Total S 1 1	0	0

- Molecule 7 is OCTATHIOCANES (three-letter code: PS9) (formula: S₈).



Mol	Chain	Residues	Atoms	ZeroOcc	AltConf
7	A	1	Total S 7 7	0	0
7	B	1	Total S 8 8	0	0
7	C	1	Total S 8 8	0	0
7	D	1	Total S 8 8	0	0
7	E	1	Total S 8 8	0	0
7	F	1	Total S 8 8	0	0

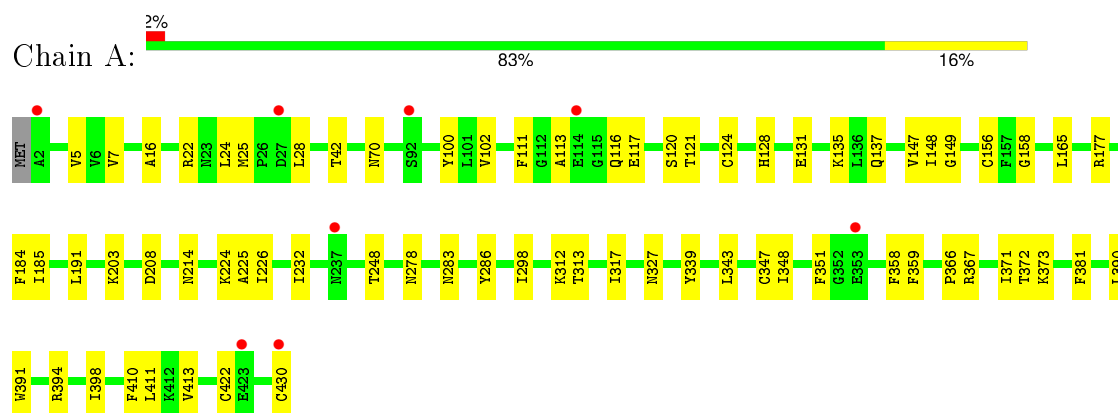
- Molecule 8 is water.

Mol	Chain	Residues	Atoms	ZeroOcc	AltConf
8	A	47	Total O 47 47	0	0
8	B	33	Total O 33 33	0	0
8	C	33	Total O 33 33	0	0
8	D	22	Total O 22 22	0	0
8	E	25	Total O 25 25	0	0
8	F	34	Total O 34 34	0	0

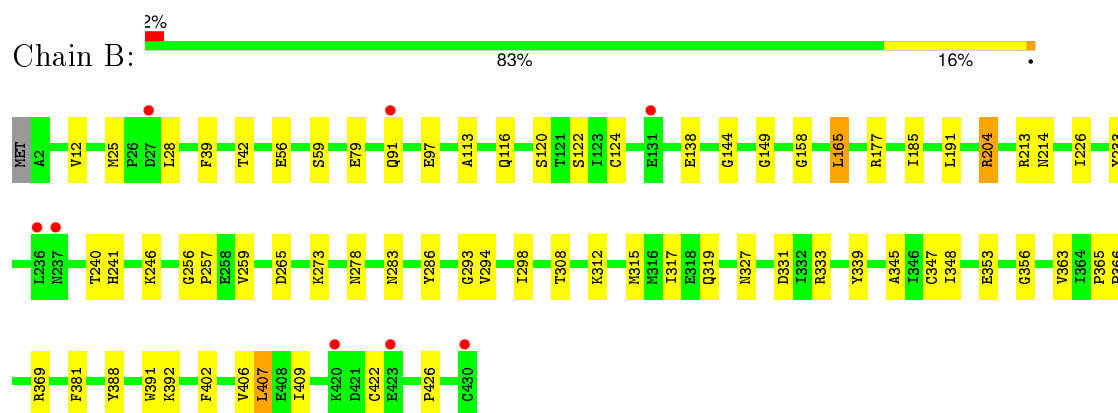
3 Residue-property plots

These plots are drawn for all protein, RNA and DNA chains in the entry. The first graphic for a chain summarises the proportions of errors displayed in the second graphic. The second graphic shows the sequence view annotated by issues in geometry and electron density. Residues are color-coded according to the number of geometric quality criteria for which they contain at least one outlier: green = 0, yellow = 1, orange = 2 and red = 3 or more. A red dot above a residue indicates a poor fit to the electron density ($RSRZ > 2$). Stretches of 2 or more consecutive residues without any outlier are shown as a green connector. Residues present in the sample, but not in the model, are shown in grey.

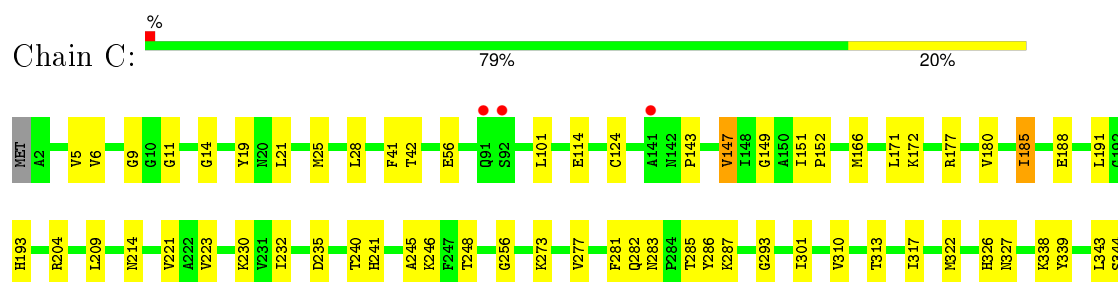
• Molecule 1: Sulfide-quinone reductase



• Molecule 1: Sulfide-quinone reductase

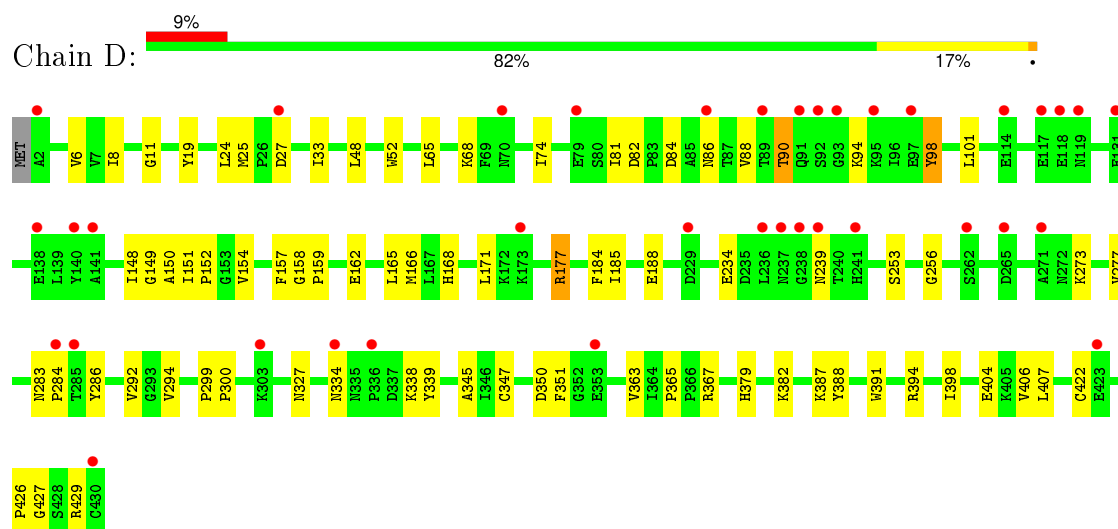


• Molecule 1: Sulfide-quinone reductase

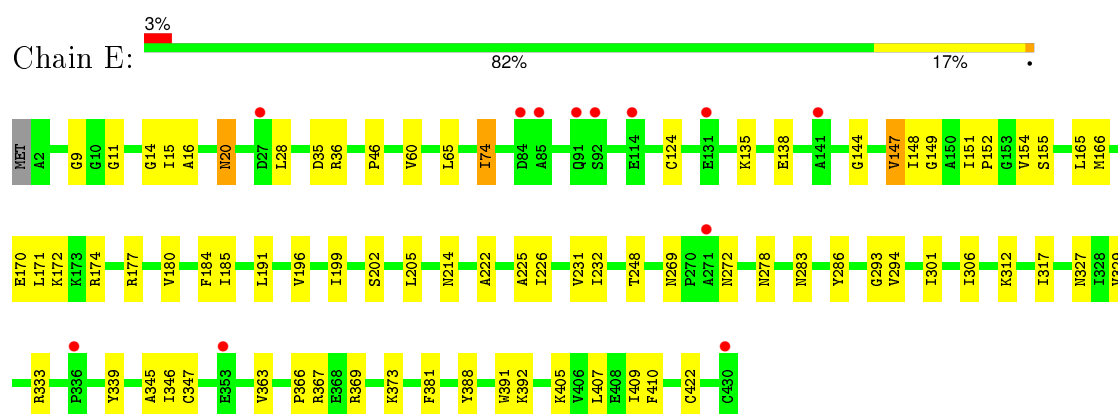




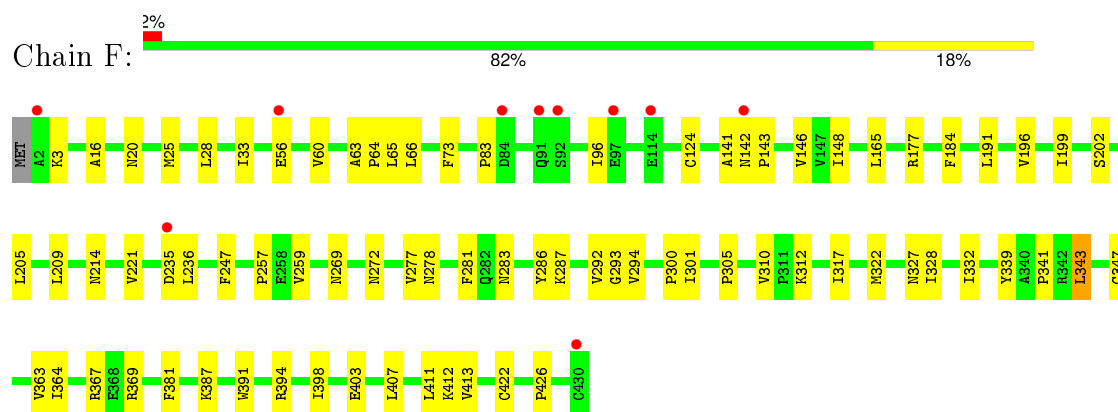
• Molecule 1: Sulfide-quinone reductase



• Molecule 1: Sulfide-quinone reductase



• Molecule 1: Sulfide-quinone reductase



4 Data and refinement statistics

Property	Value	Source
Space group	P 21 21 21	Depositor
Cell constants a, b, c, α , β , γ	111.18Å 154.23Å 176.53Å 90.00° 90.00° 90.00°	Depositor
Resolution (Å)	20.13 – 2.90 20.13 – 2.90	Depositor EDS
% Data completeness (in resolution range)	98.9 (20.13-2.90) 98.9 (20.13-2.90)	Depositor EDS
R_{merge}	(Not available)	Depositor
R_{sym}	(Not available)	Depositor
$\langle I/\sigma(I) \rangle$ ¹	2.23 (at 2.88Å)	Xtriage
Refinement program	REFMAC 5.2.0019	Depositor
R, R_{free}	0.181 , 0.240 0.220 , 0.267	Depositor DCC
R_{free} test set	3388 reflections (5.33%)	DCC
Wilson B-factor (Å ²)	49.4	Xtriage
Anisotropy	0.104	Xtriage
Bulk solvent k_{sol} (e/Å ³), B_{sol} (Å ²)	0.33 , 39.7	EDS
Estimated twinning fraction	No twinning to report.	Xtriage
L-test for twinning ²	$\langle L \rangle = 0.47$, $\langle L^2 \rangle = 0.30$	Xtriage
Outliers	0 of 66949 reflections	Xtriage
F_o, F_c correlation	0.91	EDS
Total number of atoms	21163	wwPDB-VP
Average B, all atoms (Å ²)	42.0	wwPDB-VP

Xtriage's analysis on translational NCS is as follows: *The largest off-origin peak in the Patterson function is 2.59% of the height of the origin peak. No significant pseudotranslation is detected.*

¹Intensities estimated from amplitudes.

²Theoretical values of $\langle |L| \rangle$, $\langle L^2 \rangle$ for acentric reflections are 0.5, 0.375 respectively for untwinned datasets, and 0.333, 0.2 for perfectly twinned datasets.

5 Model quality [i](#)

5.1 Standard geometry [i](#)

Bond lengths and bond angles in the following residue types are not validated in this section: CSS, AUK, LMT, H2S, PS9, SO4, FAD

The Z score for a bond length (or angle) is the number of standard deviations the observed value is removed from the expected value. A bond length (or angle) with $|Z| > 5$ is considered an outlier worth inspection. RMSZ is the root-mean-square of all Z scores of the bond lengths (or angles).

Mol	Chain	Bond lengths		Bond angles	
		RMSZ	# Z >5	RMSZ	# Z >5
1	A	0.50	1/3439 (0.0%)	0.58	0/4668
1	B	0.48	0/3457	0.56	0/4692
1	C	0.48	0/3448	0.58	0/4680
1	D	0.50	4/3448 (0.1%)	0.58	1/4680 (0.0%)
1	E	0.45	0/3448	0.56	0/4680
1	F	0.45	0/3439	0.56	0/4668
All	All	0.48	5/20679 (0.0%)	0.57	1/28068 (0.0%)

All (5) bond length outliers are listed below:

Mol	Chain	Res	Type	Atoms	Z	Observed(Å)	Ideal(Å)
1	A	430	CYS	CB-SG	5.94	1.92	1.82
1	D	82	ASP	C-O	5.66	1.34	1.23
1	D	86	ASN	C-N	5.40	1.46	1.34
1	D	84	ASP	CG-OD2	5.23	1.37	1.25
1	D	98	TYR	CE2-CZ	5.11	1.45	1.38

All (1) bond angle outliers are listed below:

Mol	Chain	Res	Type	Atoms	Z	Observed(°)	Ideal(°)
1	D	98	TYR	CB-CG-CD2	-6.01	117.40	121.00

There are no chirality outliers.

There are no planarity outliers.

5.2 Too-close contacts [i](#)

In the following table, the Non-H and H(model) columns list the number of non-hydrogen atoms and hydrogen atoms in the chain respectively. The H(added) column lists the number of hydrogen

atoms added and optimized by MolProbity. The Clashes column lists the number of clashes within the asymmetric unit, whereas Symm-Clashes lists symmetry related clashes.

Mol	Chain	Non-H	H(model)	H(added)	Clashes	Symm-Clashes
1	A	3345	0	3346	40	0
1	B	3357	0	3358	41	0
1	C	3351	0	3352	55	0
1	D	3351	0	3352	50	0
1	E	3351	0	3352	52	0
1	F	3345	0	3346	57	0
2	A	15	0	0	1	0
2	B	25	0	0	2	0
2	C	20	0	0	2	0
2	D	25	0	0	4	0
2	E	25	0	0	4	0
2	F	10	0	0	1	0
3	A	53	0	30	1	0
3	B	53	0	30	3	0
3	C	53	0	29	1	0
3	D	53	0	29	1	0
3	E	53	0	29	2	0
3	F	53	0	29	2	0
4	A	28	0	33	16	0
4	B	28	0	33	15	0
4	C	28	0	33	25	0
4	D	28	0	33	26	0
4	E	28	0	33	20	0
4	F	28	0	33	6	0
5	A	35	0	46	15	0
5	B	35	0	46	10	0
5	C	35	0	46	11	0
5	D	35	0	46	4	0
5	E	35	0	46	26	0
5	F	35	0	46	5	0
6	A	1	0	0	1	0
6	B	1	0	0	1	0
6	C	1	0	0	1	0
6	D	1	0	0	0	0
6	E	1	0	0	1	0
6	F	1	0	0	1	0
7	A	7	0	0	4	0
7	B	8	0	0	3	0
7	C	8	0	0	2	0
7	D	8	0	0	4	0
7	E	8	0	0	3	0

Continued on next page...

Continued from previous page...

Mol	Chain	Non-H	H(model)	H(added)	Clashes	Symm-Clashes
7	F	8	0	0	1	0
8	A	47	0	0	1	0
8	B	33	0	0	1	0
8	C	33	0	0	1	0
8	D	22	0	0	0	0
8	E	25	0	0	1	0
8	F	34	0	0	3	0
All	All	21163	0	20756	372	0

The all-atom clashscore is defined as the number of clashes found per 1000 atoms (including hydrogen atoms). The all-atom clashscore for this structure is 9.

All (372) close contacts within the same asymmetric unit are listed below, sorted by their clash magnitude.

Atom-1	Atom-2	Interatomic distance (Å)	Clash overlap (Å)
4:C:501:AUK:H23A	4:D:501:AUK:C25	1.18	1.59
4:C:501:AUK:C23	4:D:501:AUK:H25	1.31	1.58
4:E:501:AUK:C21	5:E:600:LMT:H12	1.56	1.33
4:E:501:AUK:H25B	5:E:600:LMT:O1'	1.27	1.30
4:C:501:AUK:C23	4:D:501:AUK:C25	1.95	1.29
4:C:501:AUK:C23	4:D:501:AUK:H22	1.66	1.25
4:C:501:AUK:H23	4:D:501:AUK:C22	1.66	1.24
4:C:501:AUK:C23	4:D:501:AUK:C22	2.24	1.07
4:E:501:AUK:C24	5:E:600:LMT:H61	1.82	1.07
4:C:501:AUK:C23	4:D:501:AUK:C21	2.35	1.04
2:C:434:SO4:O1	5:C:600:LMT:H5B	1.56	1.03
1:C:347[B]:CYS:SG	7:C:800:PS9:S8	2.57	1.02
1:A:381:PHE:HZ	4:A:501:AUK:H14	1.23	1.01
2:E:434:SO4:O2	5:E:600:LMT:H5B	1.61	1.00
1:F:283:ASN:HD22	1:F:286:TYR:H	1.10	1.00
4:C:501:AUK:H23A	4:D:501:AUK:C21	1.92	1.00
4:E:501:AUK:C21	5:E:600:LMT:C1	2.40	0.99
4:E:501:AUK:H25B	5:E:600:LMT:C1	1.92	0.98
4:C:501:AUK:C13	4:D:501:AUK:H22	1.93	0.97
1:C:327:ASN:HD21	1:C:339:TYR:H	1.08	0.96
1:B:327:ASN:HD21	1:B:339:TYR:H	1.14	0.96
4:B:501:AUK:C24	5:B:600:LMT:H52	1.94	0.96
4:E:501:AUK:C25	5:E:600:LMT:C1	2.43	0.95
4:E:501:AUK:C20	5:E:600:LMT:H12	1.97	0.94
1:D:327:ASN:HD21	1:D:339:TYR:H	0.93	0.93
4:A:501:AUK:H18	5:A:600:LMT:H42	1.51	0.91

Continued on next page...

Continued from previous page...

Atom-1	Atom-2	Interatomic distance (Å)	Clash overlap (Å)
1:B:283:ASN:HD22	1:B:286:TYR:H	1.16	0.90
4:E:501:AUK:C25	5:E:600:LMT:O1'	2.17	0.90
4:E:501:AUK:H24B	5:E:600:LMT:H61	1.53	0.89
1:E:347[B]:CYS:SG	7:E:800:PS9:S5	2.71	0.89
4:C:501:AUK:H23	4:D:501:AUK:C21	2.00	0.88
1:A:327:ASN:HD21	1:A:339:TYR:H	1.15	0.88
1:F:327:ASN:HD21	1:F:339:TYR:H	1.23	0.87
1:A:283:ASN:HD22	1:A:286:TYR:H	1.21	0.86
4:B:501:AUK:C24	5:B:600:LMT:C5	2.53	0.86
1:D:347[B]:CYS:SG	7:D:800:PS9:S8	2.75	0.85
4:E:501:AUK:C25	5:E:600:LMT:H12	2.06	0.84
4:E:501:AUK:C24	5:E:600:LMT:C6	2.56	0.83
1:F:347[B]:CYS:SG	7:F:800:PS9:S5	2.77	0.83
1:C:124[A]:CYS:SG	6:C:700:H2S:S	2.63	0.82
1:D:367:ARG:H	1:F:214:ASN:HD22	1.28	0.81
1:B:204:ARG:HH11	1:B:204:ARG:HB2	1.45	0.80
4:B:501:AUK:H24	5:B:600:LMT:H52	1.63	0.80
1:D:327:ASN:HD21	1:D:339:TYR:N	1.76	0.79
4:A:501:AUK:H16	5:A:600:LMT:H61	1.64	0.79
1:D:90:THR:HG22	1:D:94:LYS:H	1.47	0.79
1:F:124[A]:CYS:SG	6:F:700:H2S:S	2.74	0.78
1:F:283:ASN:ND2	1:F:286:TYR:H	1.79	0.78
4:C:501:AUK:C14	4:D:501:AUK:H22	2.13	0.77
1:F:381:PHE:HZ	4:F:501:AUK:H14	1.49	0.77
5:A:600:LMT:H12	5:A:600:LMT:O2'	1.82	0.77
4:A:501:AUK:C18	5:A:600:LMT:H42	2.15	0.76
1:F:294:VAL:HA	1:F:312:LYS:HD3	1.68	0.76
1:C:392:LYS:HG2	1:C:397:ASN:O	1.86	0.76
1:A:381:PHE:CZ	4:A:501:AUK:H14	2.15	0.76
4:B:501:AUK:H24B	5:B:600:LMT:C5	2.16	0.75
4:B:501:AUK:H24B	5:B:600:LMT:H51	1.67	0.75
5:F:600:LMT:O2B	5:F:600:LMT:H4'	1.86	0.73
2:E:434:SO4:O2	5:E:600:LMT:C5B	2.34	0.73
1:E:283:ASN:HD22	1:E:286:TYR:H	1.36	0.72
1:D:327:ASN:ND2	1:D:339:TYR:H	1.79	0.72
1:E:327:ASN:HD21	1:E:339:TYR:H	1.38	0.72
1:A:327:ASN:HD21	1:A:339:TYR:N	1.88	0.72
1:C:293:GLY:HA2	1:C:317:ILE:HG12	1.72	0.71
1:C:347[B]:CYS:SG	7:C:800:PS9:S5	2.89	0.71
5:C:600:LMT:H82	5:D:600:LMT:H111	1.74	0.70
1:C:185:ILE:HD11	1:C:223:VAL:HG23	1.74	0.70

Continued on next page...

Continued from previous page...

Atom-1	Atom-2	Interatomic distance (Å)	Clash overlap (Å)
4:A:501:AUK:H25B	5:A:600:LMT:C1	2.23	0.69
1:F:341:PRO:HB2	1:F:343:LEU:HD13	1.75	0.69
1:A:283:ASN:ND2	1:A:286:TYR:H	1.90	0.69
5:F:600:LMT:O2'	5:F:600:LMT:H12	1.92	0.69
2:D:434:SO4:O1	5:D:600:LMT:H4B	1.92	0.68
1:D:6:VAL:HG12	1:D:98:TYR:HB3	1.75	0.68
1:C:283:ASN:HD22	1:C:286:TYR:H	1.40	0.67
1:B:283:ASN:ND2	1:B:286:TYR:H	1.90	0.67
1:A:156[A]:CSS:SG	7:A:800:PS9:S2	2.93	0.66
1:D:148:ILE:O	1:D:184:PHE:HA	1.94	0.66
1:F:283:ASN:HD22	1:F:286:TYR:N	1.89	0.66
5:A:600:LMT:H3'	5:B:600:LMT:H3'	1.76	0.65
1:C:420:LYS:HE3	1:C:430:CYS:OXT	1.95	0.65
1:B:402:PHE:O	1:B:406:VAL:HG23	1.97	0.65
1:E:381:PHE:HZ	4:E:501:AUK:H14	1.62	0.65
1:C:327:ASN:HD21	1:C:339:TYR:N	1.90	0.64
1:B:293:GLY:HA2	1:B:317:ILE:HG12	1.80	0.64
1:B:294:VAL:HA	1:B:312:LYS:HD3	1.80	0.64
4:A:501:AUK:H25B	5:A:600:LMT:O1'	1.97	0.64
4:C:501:AUK:H23	4:D:501:AUK:H22B	1.73	0.63
1:B:381:PHE:HE2	4:B:501:AUK:H1	1.63	0.63
1:E:144:GLY:O	1:E:180:VAL:HG13	1.99	0.63
1:D:6:VAL:HG12	1:D:98:TYR:CB	2.29	0.62
4:A:501:AUK:H18	5:A:600:LMT:H61	1.81	0.62
1:D:407:LEU:HD21	4:D:501:AUK:H11A	1.81	0.62
1:F:293:GLY:HA2	1:F:317:ILE:HG12	1.81	0.62
5:C:600:LMT:H92	4:D:501:AUK:C19	2.29	0.62
1:F:25:MET:HG2	1:F:28:LEU:HB2	1.81	0.62
1:C:373:LYS:HD2	5:C:600:LMT:H6E	1.81	0.61
1:D:394:ARG:NH1	2:D:432:SO4:O3	2.33	0.61
1:E:294:VAL:HA	1:E:312:LYS:HD3	1.83	0.61
4:B:501:AUK:H28B	8:B:469:HOH:O	2.01	0.61
1:B:144:GLY:HA3	1:B:246:LYS:HD2	1.83	0.61
1:A:367:ARG:H	1:E:214:ASN:ND2	1.99	0.61
4:C:501:AUK:H14A	4:D:501:AUK:H22	1.83	0.60
1:C:25:MET:HG2	1:C:28:LEU:HB2	1.82	0.60
1:D:6:VAL:CG1	1:D:98:TYR:HB3	2.32	0.60
1:D:19:TYR:HD2	1:D:398:ILE:HG12	1.68	0.59
5:C:600:LMT:H92	4:D:501:AUK:H19	1.85	0.59
1:E:293:GLY:HA2	1:E:317:ILE:HG12	1.85	0.59
1:B:327:ASN:HD21	1:B:339:TYR:N	1.94	0.59

Continued on next page...

Continued from previous page...

Atom-1	Atom-2	Interatomic distance (Å)	Clash overlap (Å)
4:A:501:AUK:H25B	5:A:600:LMT:H11	1.85	0.58
1:D:338:LYS:HD2	1:D:422:CYS:SG	2.42	0.58
3:A:441:FAD:HN3	4:A:501:AUK:H5	1.67	0.58
1:D:158:GLY:HA3	7:D:800:PS9:S4	2.43	0.58
1:E:388:TYR:CE2	1:E:392:LYS:HE2	2.38	0.58
1:B:113:ALA:HB3	1:B:116:GLN:HB2	1.85	0.58
1:D:11:GLY:HA3	3:D:441:FAD:O1A	2.03	0.58
1:A:347[B]:CYS:SG	7:A:800:PS9:S8	3.01	0.58
1:E:345:ALA:HB1	1:E:347[A]:CYS:SG	2.44	0.58
1:E:9:GLY:O	1:E:14:GLY:HA3	2.04	0.57
1:A:391:TRP:HH2	1:B:391:TRP:HH2	1.53	0.57
1:F:381:PHE:CZ	4:F:501:AUK:H14	2.35	0.57
1:D:283:ASN:HD22	1:D:286:TYR:H	1.53	0.56
1:F:196:VAL:CG2	1:F:363:VAL:HG12	2.35	0.56
1:E:16:ALA:O	1:E:20:ASN:HB2	2.05	0.56
1:F:63:ALA:HB3	1:F:64:PRO:HD3	1.87	0.56
1:C:256:GLY:HA3	1:C:273:LYS:O	2.06	0.56
1:E:148:ILE:O	1:E:184:PHE:HA	2.05	0.56
1:D:388:TYR:CE2	4:D:501:AUK:H23	2.41	0.56
1:A:278:ASN:HB2	1:A:422:CYS:O	2.06	0.56
4:A:501:AUK:C18	5:A:600:LMT:C4	2.84	0.55
1:C:143:PRO:HB3	1:C:180:VAL:HG22	1.89	0.55
5:C:600:LMT:H122	4:D:501:AUK:H14A	1.89	0.55
1:C:403:GLU:HG3	4:D:501:AUK:H25A	1.88	0.55
4:E:501:AUK:H24	5:E:600:LMT:H61	1.82	0.55
1:F:236:LEU:HD11	1:F:305:PRO:HB3	1.88	0.55
1:F:141:ALA:O	1:F:143:PRO:HD3	2.07	0.55
1:D:256:GLY:HA3	1:D:273:LYS:O	2.06	0.55
1:D:168:HIS:ND1	1:D:177:ARG:HD3	2.21	0.55
1:B:158:GLY:HA3	7:B:800:PS9:S4	2.46	0.55
1:B:315:MET:O	1:B:319:GLN:HG3	2.06	0.55
1:E:345:ALA:HB2	1:E:363:VAL:CG2	2.37	0.55
1:D:52:TRP:CZ3	1:D:166:MET:HG2	2.41	0.55
1:C:185:ILE:CD1	1:C:221:VAL:HG23	2.36	0.54
1:F:257:PRO:HB2	1:F:259:VAL:HG12	1.89	0.54
1:C:283:ASN:ND2	1:C:286:TYR:H	2.04	0.54
1:E:60:VAL:HG11	1:E:65:LEU:HD22	1.89	0.54
4:A:501:AUK:C18	5:A:600:LMT:H61	2.36	0.54
1:D:350:ASP:OD2	1:D:379:HIS:HD2	1.90	0.54
1:C:346:ILE:HD11	1:C:411:LEU:CD1	2.38	0.54
4:E:501:AUK:H19A	5:E:600:LMT:H32	1.89	0.53

Continued on next page...

Continued from previous page...

Atom-1	Atom-2	Interatomic distance (Å)	Clash overlap (Å)
1:F:196:VAL:HG21	1:F:363:VAL:CG1	2.38	0.53
1:F:196:VAL:HG21	1:F:363:VAL:HG12	1.90	0.53
1:C:151:ILE:HB	1:C:152:PRO:HD2	1.89	0.53
5:B:600:LMT:O2'	5:B:600:LMT:H12	2.08	0.53
1:E:373:LYS:NZ	5:E:600:LMT:H6D	2.24	0.53
1:E:278:ASN:HB2	1:E:422:CYS:O	2.09	0.53
4:C:501:AUK:H14A	4:D:501:AUK:C22	2.39	0.52
1:B:165:LEU:HD12	1:B:213:ARG:HD2	1.91	0.52
8:E:440:HOH:O	1:F:394:ARG:HD2	2.10	0.52
1:C:147:VAL:HG13	1:C:248:THR:HG22	1.92	0.52
1:E:345:ALA:HB2	1:E:363:VAL:HG21	1.92	0.52
1:B:12:VAL:HB	3:B:441:FAD:H5'2	1.92	0.52
1:A:347[B]:CYS:SG	7:A:800:PS9:S6	3.07	0.52
1:A:298:ILE:HD12	1:A:312:LYS:HD2	1.91	0.52
1:D:151:ILE:HD11	1:D:253:SER:H	1.74	0.52
2:A:434:SO4:O4	5:A:600:LMT:H2B	2.10	0.51
1:C:358:PHE:HD1	1:C:372:THR:HG22	1.75	0.51
1:C:214:ASN:ND2	1:E:367:ARG:H	2.07	0.51
5:C:600:LMT:C8	5:D:600:LMT:H111	2.40	0.51
1:B:317:ILE:CD1	3:B:441:FAD:H5'1	2.40	0.51
1:C:359:PHE:HB3	1:C:371:ILE:HB	1.93	0.51
1:C:230:LYS:HE3	1:C:232:ILE:HD11	1.93	0.51
1:B:257:PRO:HB2	1:B:259:VAL:HG12	1.93	0.51
1:F:269:ASN:HB3	1:F:272:ASN:OD1	2.10	0.51
1:B:407:LEU:HD11	4:B:501:AUK:H12	1.92	0.51
1:A:358:PHE:HD1	1:A:372:THR:HG22	1.76	0.51
4:E:501:AUK:H24A	5:E:600:LMT:C6	2.40	0.51
4:B:501:AUK:H15A	5:B:600:LMT:H82	1.92	0.51
1:F:148:ILE:O	1:F:184:PHE:HA	2.10	0.51
1:A:359:PHE:HB3	1:A:371:ILE:HB	1.93	0.50
1:B:79:GLU:HG3	1:B:91:GLN:HA	1.94	0.50
1:E:199:ILE:O	1:E:202:SER:HB3	2.09	0.50
1:E:283:ASN:HD22	1:E:286:TYR:N	2.08	0.50
1:A:394:ARG:NH1	2:B:432:SO4:O2	2.43	0.50
4:E:501:AUK:H24	5:E:600:LMT:C6	2.39	0.50
1:E:225:ALA:HB3	1:E:232:ILE:HB	1.93	0.50
1:B:369:ARG:NH1	2:D:431:SO4:O4	2.44	0.50
4:C:501:AUK:C23	4:D:501:AUK:H25A	2.24	0.50
4:A:501:AUK:H16	5:A:600:LMT:C6	2.38	0.50
1:D:81:ILE:HG12	1:D:88:VAL:HG22	1.93	0.49
1:B:348:ILE:HA	1:B:356:GLY:O	2.13	0.49

Continued on next page...

Continued from previous page...

Atom-1	Atom-2	Interatomic distance (Å)	Clash overlap (Å)
4:E:501:AUK:C20	5:E:600:LMT:H32	2.43	0.49
1:A:7:VAL:HG22	1:A:102:VAL:HB	1.93	0.49
1:D:162:GLU:OE2	1:D:382:LYS:HE2	2.12	0.49
1:C:391:TRP:HH2	1:D:391:TRP:HH2	1.59	0.49
1:C:381:PHE:CZ	4:C:501:AUK:H14	2.48	0.49
1:F:196:VAL:HG22	1:F:367:ARG:NH1	2.27	0.49
1:B:256:GLY:HA3	1:B:273:LYS:O	2.13	0.49
1:F:301:ILE:HG12	1:F:364:ILE:HG23	1.95	0.49
1:E:391:TRP:HH2	1:F:391:TRP:HH2	1.60	0.49
1:C:19:TYR:CE2	1:C:396:GLY:HA2	2.47	0.49
1:E:11:GLY:HA3	3:E:441:FAD:O1A	2.13	0.49
1:B:149:GLY:HA3	1:B:185:ILE:O	2.13	0.49
4:C:501:AUK:H23B	4:D:501:AUK:C25	2.26	0.48
5:C:600:LMT:H92	4:D:501:AUK:H19A	1.94	0.48
1:A:165:LEU:HD13	1:A:351:PHE:CD1	2.48	0.48
1:D:19:TYR:CD2	1:D:398:ILE:HG12	2.48	0.48
1:C:381:PHE:HZ	4:C:501:AUK:H14	1.78	0.48
4:F:501:AUK:H16	5:F:600:LMT:H51	1.95	0.48
1:D:33:ILE:HG12	1:D:74:ILE:HB	1.95	0.48
1:D:367:ARG:N	1:F:214:ASN:HD22	2.05	0.48
1:D:277:VAL:HG23	1:D:426:PRO:HG3	1.95	0.48
1:D:52:TRP:HZ3	1:D:166:MET:HG2	1.79	0.48
1:A:116:GLN:HG3	1:A:226:ILE:HD12	1.95	0.48
1:B:124[A]:CYS:SG	6:B:700:H2S:S	3.10	0.48
1:A:5:VAL:HG22	1:A:100:TYR:HB2	1.96	0.48
1:E:149:GLY:HA3	1:E:185:ILE:O	2.14	0.48
4:D:501:AUK:H24B	5:D:600:LMT:H122	1.96	0.48
4:F:501:AUK:H24	4:F:501:AUK:H19	1.62	0.47
4:C:501:AUK:H23A	4:D:501:AUK:C22	2.22	0.47
1:B:214:ASN:HD22	1:F:367:ARG:H	1.62	0.47
1:A:147:VAL:O	1:A:248:THR:HA	2.15	0.47
1:E:405:LYS:HD3	1:F:387:LYS:HD2	1.96	0.47
1:D:149:GLY:HA3	1:D:185:ILE:O	2.14	0.47
4:C:501:AUK:H24	4:C:501:AUK:H19	1.55	0.47
5:E:600:LMT:H3'	5:F:600:LMT:H3'	1.95	0.47
4:B:501:AUK:H24	5:B:600:LMT:C5	2.33	0.47
1:F:3:LYS:O	1:F:28:LEU:HD12	2.15	0.47
1:F:196:VAL:HG22	1:F:367:ARG:HH11	1.79	0.47
1:F:327:ASN:HD21	1:F:339:TYR:N	2.03	0.47
1:E:124[A]:CYS:SG	6:E:700:H2S:S	3.09	0.47
1:E:35:ASP:OD1	1:E:36:ARG:N	2.47	0.47

Continued on next page...

Continued from previous page...

Atom-1	Atom-2	Interatomic distance (Å)	Clash overlap (Å)
1:F:277:VAL:O	1:F:426:PRO:HD3	2.15	0.47
1:A:410:PHE:O	1:A:411:LEU:HD23	2.14	0.47
1:E:283:ASN:ND2	1:E:286:TYR:H	2.06	0.47
1:D:98:TYR:CZ	1:D:101:LEU:HB2	2.50	0.47
4:B:501:AUK:C24	5:B:600:LMT:H51	2.30	0.47
1:C:358:PHE:CD1	1:C:372:THR:HG22	2.50	0.47
1:C:11:GLY:HA3	3:C:441:FAD:O5B	2.14	0.47
1:E:269:ASN:HB3	1:E:272:ASN:OD1	2.15	0.47
1:D:159:PRO:HD3	7:D:800:PS9:S2	2.55	0.46
1:F:60:VAL:HG11	1:F:65:LEU:HD22	1.98	0.46
1:E:373:LYS:CE	5:E:600:LMT:H6D	2.45	0.46
1:A:113:ALA:HB3	1:A:116:GLN:HB2	1.98	0.46
1:E:196:VAL:HA	1:E:301:ILE:HD13	1.97	0.46
1:A:121:THR:CG2	1:A:135:LYS:HD3	2.46	0.46
1:F:300:PRO:HA	1:F:310:VAL:HG23	1.96	0.46
1:A:128:HIS:HD2	1:A:131:GLU:OE2	1.99	0.46
1:A:347[B]:CYS:SG	7:A:800:PS9:S4	3.13	0.46
1:B:278:ASN:HB2	1:B:422:CYS:O	2.16	0.46
1:C:235:ASP:OD2	1:C:241:HIS:HE1	1.99	0.46
3:F:441:FAD:H8A	8:F:439:HOH:O	2.16	0.46
1:C:411:LEU:HD11	4:C:501:AUK:H24A	1.98	0.46
1:D:90:THR:CG2	1:D:94:LYS:HB3	2.46	0.46
1:C:5:VAL:HG11	1:C:21:LEU:HD13	1.98	0.46
1:A:327:ASN:ND2	1:A:339:TYR:H	1.98	0.45
1:F:199:ILE:O	1:F:202:SER:HB3	2.16	0.45
1:A:111:PHE:CD2	1:A:117:GLU:HG3	2.51	0.45
1:D:234:GLU:HA	1:D:239:ASN:O	2.16	0.45
1:C:350:ASP:OD1	1:C:379:HIS:HD2	2.00	0.45
1:C:373:LYS:HD2	5:C:600:LMT:C6'	2.46	0.45
1:C:209:LEU:HD21	1:C:351:PHE:CE2	2.52	0.45
1:D:387:LYS:HA	1:D:387:LYS:HD3	1.84	0.45
1:B:407:LEU:HD21	4:B:501:AUK:H28A	1.98	0.45
1:B:204:ARG:HB2	1:B:204:ARG:NH1	2.24	0.45
1:C:166:MET:HE2	1:C:350:ASP:HB3	1.98	0.45
4:A:501:AUK:C16	5:A:600:LMT:H61	2.42	0.45
1:E:345:ALA:CB	1:E:363:VAL:CG2	2.94	0.45
1:D:367:ARG:H	1:F:214:ASN:ND2	2.05	0.45
1:B:39:PHE:O	1:B:59:SER:HA	2.17	0.45
1:B:407:LEU:CD1	4:B:501:AUK:H12	2.46	0.44
1:B:388:TYR:CE2	1:B:392:LYS:HE2	2.53	0.44
1:D:150:ALA:HB1	1:D:154:VAL:HG21	1.98	0.44

Continued on next page...

Continued from previous page...

Atom-1	Atom-2	Interatomic distance (Å)	Clash overlap (Å)
1:D:65:LEU:O	1:D:68:LYS:HB2	2.17	0.44
1:C:185:ILE:HD13	1:C:221:VAL:HG23	1.98	0.44
1:A:124[A]:CYS:SG	6:A:700:H2S:S	3.13	0.44
1:B:233:TYR:CZ	1:B:241:HIS:HB2	2.52	0.44
1:F:83:PRO:HB2	1:F:286:TYR:CD2	2.53	0.44
1:C:151:ILE:HB	1:C:152:PRO:CD	2.47	0.44
1:B:381:PHE:HZ	4:B:501:AUK:H15	1.83	0.44
1:D:345:ALA:HB3	1:D:363:VAL:CG2	2.47	0.44
1:C:147:VAL:CG1	1:C:245:ALA:HB2	2.47	0.44
2:C:431:SO4:O3	1:E:369:ARG:NH1	2.51	0.44
1:A:348:ILE:HD12	4:A:501:AUK:H1	1.99	0.43
1:E:346:ILE:O	1:E:346:ILE:HG23	2.18	0.43
1:F:407:LEU:HD11	4:F:501:AUK:H11A	2.01	0.43
1:E:347[B]:CYS:SG	7:E:800:PS9:S8	3.17	0.43
4:B:501:AUK:H19	4:B:501:AUK:H24	1.71	0.43
1:A:148:ILE:O	1:A:184:PHE:HA	2.18	0.43
1:B:120:SER:HB2	1:B:226:ILE:HG21	2.01	0.43
1:E:381:PHE:CZ	4:E:501:AUK:H14	2.48	0.43
1:C:381:PHE:HE2	4:C:501:AUK:O27	2.01	0.43
4:E:501:AUK:C22	5:E:600:LMT:H12	2.36	0.43
1:E:151:ILE:HB	1:E:152:PRO:CD	2.49	0.43
1:C:301:ILE:HD11	1:C:364:ILE:HG12	2.01	0.43
4:C:501:AUK:H18	5:C:600:LMT:H42	2.01	0.43
1:C:188:GLU:HB3	1:C:193:HIS:HB3	2.00	0.43
2:B:435:SO4:O3	1:F:369:ARG:HD3	2.18	0.43
1:D:365:PRO:HB3	1:F:214:ASN:HD21	1.84	0.43
1:E:226:ILE:HD13	1:E:231:VAL:HG13	2.01	0.43
1:A:149:GLY:HA3	1:A:185:ILE:O	2.19	0.43
1:A:313:THR:O	1:A:317:ILE:HG13	2.18	0.42
1:A:16:ALA:HA	1:A:398:ILE:HG13	2.01	0.42
4:E:501:AUK:H24	4:E:501:AUK:H19A	1.63	0.42
1:A:366:PRO:HA	1:E:214:ASN:HD21	1.83	0.42
1:F:328:ILE:O	1:F:332:ILE:HG13	2.19	0.42
1:C:6:VAL:HG23	1:C:101:LEU:HD12	2.02	0.42
2:E:434:SO4:O2	5:E:600:LMT:H6'1	2.20	0.42
1:A:191:LEU:O	1:A:203:LYS:HA	2.19	0.42
1:E:410:PHE:CE1	5:E:600:LMT:H52	2.54	0.42
1:E:347[A]:CYS:HB3	7:E:800:PS9:S5	2.59	0.42
1:B:347[B]:CYS:HB3	7:B:800:PS9:S6	2.59	0.42
1:B:365:PRO:HA	1:B:366:PRO:C	2.39	0.42
1:C:214:ASN:HD21	1:E:366:PRO:HA	1.85	0.42

Continued on next page...

Continued from previous page...

Atom-1	Atom-2	Interatomic distance (Å)	Clash overlap (Å)
1:E:147:VAL:O	1:E:248:THR:HA	2.20	0.42
1:C:384:ALA:HB1	1:D:406:VAL:HG22	2.02	0.42
1:B:345:ALA:H	1:B:363:VAL:HG23	1.83	0.42
5:E:600:LMT:H92	1:F:381:PHE:CE1	2.55	0.42
1:C:185:ILE:HD13	1:C:221:VAL:CG2	2.50	0.42
1:D:157:PHE:CE1	1:D:188:GLU:HG3	2.55	0.42
1:F:278:ASN:ND2	1:F:422:CYS:HB3	2.35	0.42
1:C:149:GLY:HA3	1:C:185:ILE:O	2.20	0.42
1:A:225:ALA:HB3	1:A:232:ILE:HB	2.01	0.42
1:F:411:LEU:HB2	1:F:413:VAL:HG23	2.02	0.42
1:A:208:ASP:OD1	1:C:204:ARG:NE	2.50	0.42
1:F:327:ASN:ND2	1:F:339:TYR:H	2.02	0.41
4:A:501:AUK:H18	5:A:600:LMT:C4	2.35	0.41
1:B:347[A]:CYS:HB3	7:B:800:PS9:S5	2.61	0.41
3:F:441:FAD:H1'1	3:F:441:FAD:H9	1.86	0.41
1:E:329:VAL:HG13	1:E:333:ARG:HD2	2.03	0.41
1:E:46:PRO:HB2	1:E:166:MET:HE1	2.01	0.41
2:E:434:SO4:O2	5:E:600:LMT:C6B	2.67	0.41
1:D:394:ARG:HD2	2:D:432:SO4:O4	2.20	0.41
1:C:9:GLY:O	1:C:14:GLY:HA3	2.20	0.41
1:E:222:ALA:HB2	1:E:306:ILE:HD12	2.02	0.41
1:F:209:LEU:HD12	1:F:209:LEU:HA	1.89	0.41
4:C:501:AUK:H16	5:C:600:LMT:H61	2.01	0.41
1:F:403:GLU:OE2	4:F:501:AUK:H28B	2.20	0.41
3:E:441:FAD:H1'1	3:E:441:FAD:H9	1.84	0.41
1:F:20:ASN:HD21	1:F:322:MET:HG2	1.85	0.41
1:F:146:VAL:HG22	1:F:247:PHE:HB3	2.02	0.41
1:F:412:LYS:NZ	8:F:465:HOH:O	2.52	0.41
1:C:41:PHE:CE2	1:C:386:GLU:HG3	2.56	0.41
1:C:282:GLN:NE2	1:C:287:LYS:O	2.49	0.41
1:D:165:LEU:HD13	1:D:351:PHE:CD1	2.55	0.41
1:B:298:ILE:HG12	1:B:426:PRO:HG2	2.03	0.41
1:C:322:MET:O	1:C:326:HIS:HD2	2.04	0.41
1:F:221:VAL:HG12	1:F:235:ASP:HA	2.02	0.41
1:C:277:VAL:HB	1:C:281:PHE:HA	2.02	0.41
1:A:22:ARG:NH2	1:A:70:ASN:O	2.36	0.41
2:F:434:SO4:O3	5:F:600:LMT:H3B	2.21	0.41
1:D:347[A]:CYS:SG	7:D:800:PS9:S8	3.17	0.41
3:B:441:FAD:H9	3:B:441:FAD:H1'1	1.75	0.41
1:F:277:VAL:HB	1:F:281:PHE:HA	2.02	0.41
1:F:278:ASN:HB2	1:F:422:CYS:O	2.21	0.41

Continued on next page...

Continued from previous page...

Atom-1	Atom-2	Interatomic distance (Å)	Clash overlap (Å)
1:E:154:VAL:CG1	1:E:155:SER:N	2.84	0.41
1:D:427:GLY:O	1:D:429:ARG:NH2	2.53	0.40
1:E:170:GLU:OE2	1:E:174:ARG:NE	2.54	0.40
1:A:25:MET:HG2	1:A:28:LEU:HB2	2.02	0.40
4:C:501:AUK:H23	4:D:501:AUK:H22	1.38	0.40
1:E:11:GLY:O	1:E:15:ILE:HG12	2.22	0.40
1:C:277:VAL:O	1:C:426:PRO:HD3	2.21	0.40
1:F:16:ALA:HA	1:F:398:ILE:HG13	2.03	0.40
1:F:66:LEU:HD12	1:F:73:PHE:HB2	2.03	0.40
1:E:135:LYS:O	1:E:138:GLU:HB2	2.22	0.40
1:F:33:ILE:HD11	1:F:96:ILE:HD12	2.02	0.40
1:B:25:MET:HG3	1:B:333:ARG:HH21	1.87	0.40
1:E:74:ILE:O	1:E:74:ILE:HG13	2.20	0.40
1:D:299:PRO:HA	1:D:300:PRO:HD2	1.89	0.40
1:D:151:ILE:HB	1:D:152:PRO:CD	2.52	0.40

There are no symmetry-related clashes.

5.3 Torsion angles [i](#)

5.3.1 Protein backbone [i](#)

In the following table, the Percentiles column shows the percent Ramachandran outliers of the chain as a percentile score with respect to all X-ray entries followed by that with respect to entries of similar resolution.

The Analysed column shows the number of residues for which the backbone conformation was analysed, and the total number of residues.

Mol	Chain	Analysed	Favoured	Allowed	Outliers	Percentiles	
1	A	429/430 (100%)	414 (96%)	14 (3%)	1 (0%)	52	84
1	B	431/430 (100%)	417 (97%)	14 (3%)	0	100	100
1	C	430/430 (100%)	421 (98%)	9 (2%)	0	100	100
1	D	430/430 (100%)	416 (97%)	12 (3%)	2 (0%)	34	71
1	E	430/430 (100%)	413 (96%)	17 (4%)	0	100	100
1	F	429/430 (100%)	413 (96%)	15 (4%)	1 (0%)	52	84
All	All	2579/2580 (100%)	2494 (97%)	81 (3%)	4 (0%)	52	84

All (4) Ramachandran outliers are listed below:

Mol	Chain	Res	Type
1	D	334	ASN
1	F	287	LYS
1	A	158	GLY
1	D	284	PRO

5.3.2 Protein sidechains ⓘ

In the following table, the Percentiles column shows the percent sidechain outliers of the chain as a percentile score with respect to all X-ray entries followed by that with respect to entries of similar resolution.

The Analysed column shows the number of residues for which the sidechain conformation was analysed, and the total number of residues.

Mol	Chain	Analysed	Rotameric	Outliers	Percentiles	
1	A	358/356 (101%)	347 (97%)	11 (3%)	47	82
1	B	360/356 (101%)	342 (95%)	18 (5%)	30	65
1	C	359/356 (101%)	338 (94%)	21 (6%)	25	58
1	D	359/356 (101%)	348 (97%)	11 (3%)	47	82
1	E	359/356 (101%)	347 (97%)	12 (3%)	45	80
1	F	358/356 (101%)	350 (98%)	8 (2%)	60	88
All	All	2153/2136 (101%)	2072 (96%)	81 (4%)	41	76

All (81) residues with a non-rotameric sidechain are listed below:

Mol	Chain	Res	Type
1	A	24	LEU
1	A	42	THR
1	A	120	SER
1	A	137	GLN
1	A	177	ARG
1	A	214	ASN
1	A	224	LYS
1	A	343	LEU
1	A	373	LYS
1	A	390	LEU
1	A	413	VAL
1	B	28	LEU
1	B	42	THR
1	B	56[A]	GLU
1	B	56[B]	GLU

Continued on next page...

Continued from previous page...

Mol	Chain	Res	Type
1	B	97	GLU
1	B	122	SER
1	B	138	GLU
1	B	165	LEU
1	B	177	ARG
1	B	191	LEU
1	B	204	ARG
1	B	240	THR
1	B	265	ASP
1	B	308	THR
1	B	331	ASP
1	B	353	GLU
1	B	407	LEU
1	B	409	ILE
1	C	42	THR
1	C	56[A]	GLU
1	C	56[B]	GLU
1	C	114[A]	GLU
1	C	114[B]	GLU
1	C	147	VAL
1	C	171	LEU
1	C	172	LYS
1	C	177	ARG
1	C	185	ILE
1	C	191	LEU
1	C	240	THR
1	C	246	LYS
1	C	285	THR
1	C	310	VAL
1	C	313	THR
1	C	338	LYS
1	C	343	LEU
1	C	344	SER
1	C	390	LEU
1	C	423	GLU
1	D	8	ILE
1	D	24	LEU
1	D	25	MET
1	D	27	ASP
1	D	48	LEU
1	D	90	THR
1	D	171	LEU

Continued on next page...

Continued from previous page...

Mol	Chain	Res	Type
1	D	177	ARG
1	D	292	VAL
1	D	294	VAL
1	D	404	GLU
1	E	20	ASN
1	E	28	LEU
1	E	74	ILE
1	E	147	VAL
1	E	165	LEU
1	E	171	LEU
1	E	172	LYS
1	E	177	ARG
1	E	191	LEU
1	E	205	LEU
1	E	407	LEU
1	E	409	ILE
1	F	56	GLU
1	F	142	ASN
1	F	165	LEU
1	F	177	ARG
1	F	191	LEU
1	F	205	LEU
1	F	292	VAL
1	F	343	LEU

Some sidechains can be flipped to improve hydrogen bonding and reduce clashes. All (42) such sidechains are listed below:

Mol	Chain	Res	Type
1	A	23	ASN
1	A	86	ASN
1	A	128	HIS
1	A	133	GLN
1	A	239	ASN
1	A	283	ASN
1	A	326	HIS
1	A	327	ASN
1	A	379	HIS
1	B	23	ASN
1	B	214	ASN
1	B	237	ASN
1	B	241	HIS
1	B	283	ASN

Continued on next page...

Continued from previous page...

Mol	Chain	Res	Type
1	B	327	ASN
1	C	23	ASN
1	C	214	ASN
1	C	237	ASN
1	C	241	HIS
1	C	283	ASN
1	C	326	HIS
1	C	327	ASN
1	C	379	HIS
1	C	395	ASN
1	D	91	GLN
1	D	128	HIS
1	D	214	ASN
1	D	283	ASN
1	D	327	ASN
1	D	379	HIS
1	D	395	ASN
1	E	214	ASN
1	E	237	ASN
1	E	283	ASN
1	E	327	ASN
1	E	379	HIS
1	F	20	ASN
1	F	214	ASN
1	F	237	ASN
1	F	283	ASN
1	F	327	ASN
1	F	379	HIS

5.3.3 RNA ⓘ

There are no RNA molecules in this entry.

5.4 Non-standard residues in protein, DNA, RNA chains ⓘ

12 non-standard protein/DNA/RNA residues are modelled in this entry.

In the following table, the Counts columns list the number of bonds (or angles) for which Mogul statistics could be retrieved, the number of bonds (or angles) that are observed in the model and the number of bonds (or angles) that are defined in the chemical component dictionary. The Link column lists molecule types, if any, to which the group is linked. The Z score for a bond length (or angle) is the number of standard deviations the observed value is removed from the expected

value. A bond length (or angle) with $|Z| > 2$ is considered an outlier worth inspection. RMSZ is the root-mean-square of all Z scores of the bond lengths (or angles).

Mol	Type	Chain	Res	Link	Bond lengths			Bond angles		
					Counts	RMSZ	$\# Z > 2$	Counts	RMSZ	$\# Z > 2$
1	CSS	A	156[A]	-	4,5,7	1.27	0	3,5,8	1.84	1 (33%)
1	CSS	A	156[B]	7	4,6,7	1.03	0	3,6,8	1.66	1 (33%)
1	CSS	B	156[A]	-	4,5,7	1.50	1 (25%)	3,5,8	1.57	1 (33%)
1	CSS	B	156[B]	7	4,6,7	0.99	0	3,6,8	1.48	1 (33%)
1	CSS	C	156[A]	-	4,5,7	1.30	1 (25%)	3,5,8	1.36	0
1	CSS	C	156[B]	7	4,6,7	0.99	0	3,6,8	1.47	0
1	CSS	D	156[A]	-	4,5,7	1.54	1 (25%)	3,5,8	2.34	2 (66%)
1	CSS	D	156[B]	7	4,6,7	0.97	0	3,6,8	1.66	1 (33%)
1	CSS	E	156[A]	-	4,5,7	1.23	0	3,5,8	1.19	0
1	CSS	E	156[B]	7	4,6,7	0.88	0	3,6,8	1.56	0
1	CSS	F	156[A]	-	4,5,7	1.39	1 (25%)	3,5,8	1.76	1 (33%)
1	CSS	F	156[B]	7	4,6,7	1.08	0	3,6,8	1.68	1 (33%)

In the following table, the Chirals column lists the number of chiral outliers, the number of chiral centers analysed, the number of these observed in the model and the number defined in the chemical component dictionary. Similar counts are reported in the Torsion and Rings columns. '-' means no outliers of that kind were identified.

Mol	Type	Chain	Res	Link	Chirals	Torsions	Rings
1	CSS	A	156[A]	-	-	0/1/4/7	0/0/0/0
1	CSS	A	156[B]	7	-	0/1/5/7	0/0/0/0
1	CSS	B	156[A]	-	-	0/1/4/7	0/0/0/0
1	CSS	B	156[B]	7	-	0/1/5/7	0/0/0/0
1	CSS	C	156[A]	-	-	0/1/4/7	0/0/0/0
1	CSS	C	156[B]	7	-	0/1/5/7	0/0/0/0
1	CSS	D	156[A]	-	-	0/1/4/7	0/0/0/0
1	CSS	D	156[B]	7	-	0/1/5/7	0/0/0/0
1	CSS	E	156[A]	-	-	0/1/4/7	0/0/0/0
1	CSS	E	156[B]	7	-	0/1/5/7	0/0/0/0
1	CSS	F	156[A]	-	-	0/1/4/7	0/0/0/0
1	CSS	F	156[B]	7	-	0/1/5/7	0/0/0/0

All (4) bond length outliers are listed below:

Mol	Chain	Res	Type	Atoms	Z	Observed(Å)	Ideal(Å)
1	D	156[A]	CSS	CB-SG	-2.69	1.75	1.81
1	B	156[A]	CSS	CB-SG	-2.60	1.75	1.81

Continued on next page...

Continued from previous page...

Mol	Chain	Res	Type	Atoms	Z	Observed(Å)	Ideal(Å)
1	C	156[A]	CSS	CB-SG	-2.03	1.76	1.81
1	F	156[A]	CSS	CB-SG	-2.01	1.77	1.81

All (9) bond angle outliers are listed below:

Mol	Chain	Res	Type	Atoms	Z	Observed(°)	Ideal(°)
1	D	156[A]	CSS	CA-CB-SG	-3.33	106.84	114.48
1	F	156[A]	CSS	O-C-CA	-2.73	118.39	125.49
1	F	156[B]	CSS	O-C-CA	-2.73	118.39	125.49
1	A	156[B]	CSS	O-C-CA	-2.45	119.11	125.49
1	A	156[A]	CSS	O-C-CA	-2.45	119.11	125.49
1	D	156[B]	CSS	O-C-CA	-2.27	119.56	125.49
1	D	156[A]	CSS	O-C-CA	-2.27	119.56	125.49
1	B	156[B]	CSS	O-C-CA	-2.05	120.15	125.49
1	B	156[A]	CSS	O-C-CA	-2.05	120.15	125.49

There are no chirality outliers.

There are no torsion outliers.

There are no ring outliers.

1 monomer is involved in 1 short contact:

Mol	Chain	Res	Type	Clashes	Symm-Clashes
1	A	156[A]	CSS	1	0

5.5 Carbohydrates

There are no carbohydrates in this entry.

5.6 Ligand geometry

Of 54 ligands modelled in this entry, 6 are modelled with single atom - leaving 48 for Mogul analysis.

In the following table, the Counts columns list the number of bonds (or angles) for which Mogul statistics could be retrieved, the number of bonds (or angles) that are observed in the model and the number of bonds (or angles) that are defined in the chemical component dictionary. The Link column lists molecule types, if any, to which the group is linked. The Z score for a bond length (or angle) is the number of standard deviations the observed value is removed from the expected value. A bond length (or angle) with $|Z| > 2$ is considered an outlier worth inspection. RMSZ is the root-mean-square of all Z scores of the bond lengths (or angles).

Mol	Type	Chain	Res	Link	Bond lengths			Bond angles		
					Counts	RMSZ	# Z > 2	Counts	RMSZ	# Z > 2
2	SO4	A	431	-	4,4,4	0.14	0	6,6,6	0.24	0
2	SO4	A	433	-	4,4,4	0.21	0	6,6,6	0.16	0
2	SO4	A	434	-	4,4,4	0.19	0	6,6,6	0.21	0
3	FAD	A	441	6	48,58,58	1.11	3 (6%)	54,89,89	2.11	8 (14%)
4	AUK	A	501	-	26,29,29	2.80	4 (15%)	30,39,39	1.54	6 (20%)
5	LMT	A	600	-	36,36,36	0.53	0	47,47,47	1.09	2 (4%)
7	PS9	A	800	1	4,6,8	1.51	0	3,5,8	1.18	0
2	SO4	B	431	-	4,4,4	0.22	0	6,6,6	0.20	0
2	SO4	B	432	-	4,4,4	0.21	0	6,6,6	0.24	0
2	SO4	B	433	-	4,4,4	0.23	0	6,6,6	0.34	0
2	SO4	B	434	-	4,4,4	0.16	0	6,6,6	0.20	0
2	SO4	B	435	-	4,4,4	0.19	0	6,6,6	0.19	0
3	FAD	B	441	6	48,58,58	1.11	3 (6%)	54,89,89	1.90	6 (11%)
4	AUK	B	501	-	26,29,29	2.83	4 (15%)	30,39,39	1.41	6 (20%)
5	LMT	B	600	-	36,36,36	0.59	1 (2%)	47,47,47	1.14	3 (6%)
7	PS9	B	800	1	8,8,8	0.65	0	8,8,8	0.85	0
2	SO4	C	431	-	4,4,4	0.25	0	6,6,6	0.21	0
2	SO4	C	432	-	4,4,4	0.14	0	6,6,6	0.29	0
2	SO4	C	433	-	4,4,4	0.21	0	6,6,6	0.51	0
2	SO4	C	434	-	4,4,4	0.16	0	6,6,6	0.13	0
3	FAD	C	441	6	48,58,58	1.12	2 (4%)	54,89,89	2.07	11 (20%)
4	AUK	C	501	-	26,29,29	2.79	4 (15%)	30,39,39	1.48	6 (20%)
5	LMT	C	600	-	36,36,36	0.50	0	47,47,47	1.08	4 (8%)
7	PS9	C	800	1	8,8,8	0.69	0	8,8,8	0.87	0
2	SO4	D	431	-	4,4,4	0.17	0	6,6,6	0.15	0
2	SO4	D	432	-	4,4,4	0.22	0	6,6,6	0.17	0
2	SO4	D	433	-	4,4,4	0.25	0	6,6,6	0.09	0
2	SO4	D	434	-	4,4,4	0.18	0	6,6,6	0.15	0
2	SO4	D	435	-	4,4,4	0.20	0	6,6,6	0.10	0
3	FAD	D	441	6	48,58,58	1.03	2 (4%)	54,89,89	2.01	6 (11%)
4	AUK	D	501	-	26,29,29	2.85	4 (15%)	30,39,39	1.58	6 (20%)
5	LMT	D	600	-	36,36,36	0.83	2 (5%)	47,47,47	1.03	2 (4%)
7	PS9	D	800	1	8,8,8	0.63	0	8,8,8	0.90	0
2	SO4	E	431	-	4,4,4	0.17	0	6,6,6	0.17	0
2	SO4	E	432	-	4,4,4	0.20	0	6,6,6	0.21	0
2	SO4	E	433	-	4,4,4	0.20	0	6,6,6	0.23	0
2	SO4	E	434	-	4,4,4	0.26	0	6,6,6	0.09	0
2	SO4	E	435	-	4,4,4	0.16	0	6,6,6	0.29	0
3	FAD	E	441	6	48,58,58	1.10	2 (4%)	54,89,89	2.24	9 (16%)
4	AUK	E	501	-	26,29,29	2.76	4 (15%)	30,39,39	1.61	7 (23%)

Mol	Type	Chain	Res	Link	Bond lengths			Bond angles		
					Counts	RMSZ	# Z > 2	Counts	RMSZ	# Z > 2
5	LMT	E	600	-	36,36,36	0.49	0	47,47,47	1.12	4 (8%)
7	PS9	E	800	1	8,8,8	0.68	0	8,8,8	0.77	0
2	SO4	F	433	-	4,4,4	0.23	0	6,6,6	0.21	0
2	SO4	F	434	-	4,4,4	0.11	0	6,6,6	0.29	0
3	FAD	F	441	6	48,58,58	1.12	3 (6%)	54,89,89	2.04	11 (20%)
4	AUK	F	501	-	26,29,29	2.87	4 (15%)	30,39,39	1.77	7 (23%)
5	LMT	F	600	-	36,36,36	0.62	1 (2%)	47,47,47	1.27	3 (6%)
7	PS9	F	800	1	8,8,8	0.67	0	8,8,8	0.75	0

In the following table, the Chirals column lists the number of chiral outliers, the number of chiral centers analysed, the number of these observed in the model and the number defined in the chemical component dictionary. Similar counts are reported in the Torsion and Rings columns. '-' means no outliers of that kind were identified.

Mol	Type	Chain	Res	Link	Chirals	Torsions	Rings
2	SO4	A	431	-	-	0/0/0/0	0/0/0/0
2	SO4	A	433	-	-	0/0/0/0	0/0/0/0
2	SO4	A	434	-	-	0/0/0/0	0/0/0/0
3	FAD	A	441	6	-	0/30/50/50	0/6/6/6
4	AUK	A	501	-	-	1/17/17/17	0/2/2/2
5	LMT	A	600	-	-	0/21/61/61	0/2/2/2
7	PS9	A	800	1	-	0/4/4/8	0/0/0/1
2	SO4	B	431	-	-	0/0/0/0	0/0/0/0
2	SO4	B	432	-	-	0/0/0/0	0/0/0/0
2	SO4	B	433	-	-	0/0/0/0	0/0/0/0
2	SO4	B	434	-	-	0/0/0/0	0/0/0/0
2	SO4	B	435	-	-	0/0/0/0	0/0/0/0
3	FAD	B	441	6	-	0/30/50/50	0/6/6/6
4	AUK	B	501	-	-	0/17/17/17	0/2/2/2
5	LMT	B	600	-	-	1/21/61/61	0/2/2/2
7	PS9	B	800	1	-	0/0/8/8	0/1/1/1
2	SO4	C	431	-	-	0/0/0/0	0/0/0/0
2	SO4	C	432	-	-	0/0/0/0	0/0/0/0
2	SO4	C	433	-	-	0/0/0/0	0/0/0/0
2	SO4	C	434	-	-	0/0/0/0	0/0/0/0
3	FAD	C	441	6	-	0/30/50/50	0/6/6/6
4	AUK	C	501	-	-	0/17/17/17	0/2/2/2
5	LMT	C	600	-	-	0/21/61/61	0/2/2/2
7	PS9	C	800	1	-	0/0/8/8	0/1/1/1
2	SO4	D	431	-	-	0/0/0/0	0/0/0/0
2	SO4	D	432	-	-	0/0/0/0	0/0/0/0
2	SO4	D	433	-	-	0/0/0/0	0/0/0/0

Continued on next page...

Continued from previous page...

Mol	Type	Chain	Res	Link	Chirals	Torsions	Rings
2	SO4	D	434	-	-	0/0/0/0	0/0/0/0
2	SO4	D	435	-	-	0/0/0/0	0/0/0/0
3	FAD	D	441	6	-	0/30/50/50	0/6/6/6
4	AUK	D	501	-	-	0/17/17/17	0/2/2/2
5	LMT	D	600	-	-	0/21/61/61	0/2/2/2
7	PS9	D	800	1	-	0/0/8/8	0/1/1/1
2	SO4	E	431	-	-	0/0/0/0	0/0/0/0
2	SO4	E	432	-	-	0/0/0/0	0/0/0/0
2	SO4	E	433	-	-	0/0/0/0	0/0/0/0
2	SO4	E	434	-	-	0/0/0/0	0/0/0/0
2	SO4	E	435	-	-	0/0/0/0	0/0/0/0
3	FAD	E	441	6	-	0/30/50/50	0/6/6/6
4	AUK	E	501	-	-	0/17/17/17	0/2/2/2
5	LMT	E	600	-	-	0/21/61/61	0/2/2/2
7	PS9	E	800	1	-	0/0/8/8	0/1/1/1
2	SO4	F	433	-	-	0/0/0/0	0/0/0/0
2	SO4	F	434	-	-	0/0/0/0	0/0/0/0
3	FAD	F	441	6	-	0/30/50/50	0/6/6/6
4	AUK	F	501	-	-	1/17/17/17	0/2/2/2
5	LMT	F	600	-	-	0/21/61/61	0/2/2/2
7	PS9	F	800	1	-	0/0/8/8	0/1/1/1

All (43) bond length outliers are listed below:

Mol	Chain	Res	Type	Atoms	Z	Observed(Å)	Ideal(Å)
3	C	441	FAD	C10-N10	-3.63	1.34	1.39
3	E	441	FAD	C10-N10	-3.57	1.35	1.39
3	F	441	FAD	C10-N10	-3.11	1.35	1.39
3	B	441	FAD	C10-N10	-2.85	1.35	1.39
3	A	441	FAD	C10-N10	-2.53	1.36	1.39
3	D	441	FAD	C10-N10	-2.01	1.36	1.39
3	A	441	FAD	O4B-C1B	2.08	1.43	1.41
3	F	441	FAD	O4B-C1B	2.22	1.44	1.41
5	D	600	LMT	O1'-C1'	2.27	1.44	1.40
5	B	600	LMT	O1'-C1'	2.34	1.44	1.40
3	B	441	FAD	O4B-C1B	2.34	1.44	1.41
5	F	600	LMT	O1'-C1'	2.39	1.44	1.40
4	B	501	AUK	C7-C8	2.81	1.49	1.41
5	D	600	LMT	C12-C11	2.82	1.74	1.49
4	D	501	AUK	C7-C8	2.99	1.50	1.41
4	F	501	AUK	C7-C8	3.06	1.50	1.41
4	A	501	AUK	C7-C8	3.07	1.50	1.41

Continued on next page...

Continued from previous page...

Mol	Chain	Res	Type	Atoms	Z	Observed(Å)	Ideal(Å)
4	E	501	AUK	C7-C8	3.10	1.50	1.41
4	C	501	AUK	C7-C8	3.20	1.50	1.41
4	B	501	AUK	C9-C8	4.51	1.50	1.40
4	E	501	AUK	C9-C8	4.52	1.50	1.40
4	F	501	AUK	C9-C8	4.60	1.50	1.40
3	B	441	FAD	O4-C4	4.72	1.36	1.24
4	D	501	AUK	C9-C8	4.73	1.50	1.40
3	C	441	FAD	O4-C4	4.74	1.36	1.24
4	A	501	AUK	C9-C8	4.75	1.50	1.40
4	C	501	AUK	C9-C8	4.76	1.50	1.40
3	F	441	FAD	O4-C4	4.90	1.36	1.24
3	E	441	FAD	O4-C4	4.91	1.36	1.24
3	A	441	FAD	O4-C4	4.93	1.36	1.24
3	D	441	FAD	O4-C4	4.98	1.36	1.24
4	E	501	AUK	C7-C2	6.07	1.49	1.41
4	C	501	AUK	C7-C2	6.07	1.49	1.41
4	F	501	AUK	C7-C2	6.17	1.49	1.41
4	B	501	AUK	C7-C2	6.22	1.50	1.41
4	D	501	AUK	C7-C2	6.28	1.50	1.41
4	A	501	AUK	C7-C2	6.28	1.50	1.41
4	C	501	AUK	C2-C3	10.64	1.49	1.41
4	E	501	AUK	C2-C3	10.68	1.49	1.41
4	A	501	AUK	C2-C3	10.72	1.49	1.41
4	B	501	AUK	C2-C3	11.21	1.49	1.41
4	D	501	AUK	C2-C3	11.25	1.49	1.41
4	F	501	AUK	C2-C3	11.28	1.49	1.41

All (107) bond angle outliers are listed below:

Mol	Chain	Res	Type	Atoms	Z	Observed(°)	Ideal(°)
3	E	441	FAD	N3A-C2A-N1A	-11.02	120.46	128.89
3	A	441	FAD	N3A-C2A-N1A	-10.68	120.72	128.89
3	D	441	FAD	N3A-C2A-N1A	-10.23	121.06	128.89
3	C	441	FAD	N3A-C2A-N1A	-9.83	121.37	128.89
3	B	441	FAD	N3A-C2A-N1A	-9.72	121.45	128.89
3	F	441	FAD	N3A-C2A-N1A	-9.60	121.54	128.89
4	F	501	AUK	C11-C8-C9	-5.10	117.17	121.26
3	E	441	FAD	C1B-N9A-C4A	-3.91	121.05	126.94
3	D	441	FAD	P-O3P-PA	-3.85	121.90	132.73
4	E	501	AUK	C11-C8-C9	-3.78	118.23	121.26
3	A	441	FAD	P-O3P-PA	-3.66	122.46	132.73
4	A	501	AUK	C11-C8-C9	-3.56	118.41	121.26

Continued on next page...

Continued from previous page...

Mol	Chain	Res	Type	Atoms	Z	Observed(°)	Ideal(°)
3	E	441	FAD	P-O3P-PA	-3.30	123.47	132.73
3	C	441	FAD	C4A-C5A-N7A	-3.27	106.47	109.48
3	C	441	FAD	C1B-N9A-C4A	-3.26	122.02	126.94
3	B	441	FAD	P-O3P-PA	-3.10	124.03	132.73
4	D	501	AUK	C11-C8-C9	-2.97	118.88	121.26
3	E	441	FAD	C4X-C4-N3	-2.95	119.56	123.59
3	F	441	FAD	C1B-N9A-C4A	-2.94	122.50	126.94
4	C	501	AUK	C11-C8-C9	-2.88	118.95	121.26
3	E	441	FAD	C4A-C5A-N7A	-2.86	106.84	109.48
3	A	441	FAD	C1B-N9A-C4A	-2.86	122.62	126.94
3	F	441	FAD	C4X-C4-N3	-2.76	119.81	123.59
3	A	441	FAD	C4A-C5A-N7A	-2.74	106.96	109.48
5	E	600	LMT	C1'-O5'-C5'	-2.73	108.44	113.75
3	A	441	FAD	C4X-C4-N3	-2.73	119.86	123.59
3	F	441	FAD	C4A-C5A-N7A	-2.64	107.05	109.48
3	F	441	FAD	P-O3P-PA	-2.62	125.38	132.73
3	C	441	FAD	C4X-C4-N3	-2.59	120.05	123.59
3	D	441	FAD	C4X-C4-N3	-2.57	120.07	123.59
4	D	501	AUK	C8-C7-C2	-2.56	118.63	122.33
3	C	441	FAD	P-O3P-PA	-2.53	125.61	132.73
3	B	441	FAD	C4A-C5A-N7A	-2.45	107.22	109.48
3	F	441	FAD	O5'-P-O1P	-2.42	100.24	109.62
3	B	441	FAD	C4X-C4-N3	-2.33	120.40	123.59
4	F	501	AUK	C8-C7-C2	-2.30	119.00	122.33
4	B	501	AUK	C8-C7-C2	-2.22	119.13	122.33
4	A	501	AUK	C15-C16-C17	-2.21	122.96	127.76
4	A	501	AUK	C8-C7-C2	-2.16	119.21	122.33
4	E	501	AUK	C8-C7-C2	-2.12	119.26	122.33
4	C	501	AUK	C8-C7-C2	-2.11	119.28	122.33
4	B	501	AUK	C15-C16-C17	-2.07	123.26	127.76
4	F	501	AUK	C24-C17-C16	-2.03	119.52	123.50
4	F	501	AUK	C15-C16-C17	-2.02	123.37	127.76
3	C	441	FAD	O4'-C4'-C3'	-2.01	103.96	109.02
3	F	441	FAD	C6-C5X-C9A	2.02	121.64	118.98
5	D	600	LMT	O1'-C1'-C2'	2.03	110.60	108.04
5	E	600	LMT	O5'-C5'-C6'	2.04	111.50	106.36
4	C	501	AUK	C1-C2-C7	2.04	121.38	119.12
5	B	600	LMT	C3B-C4B-C5B	2.09	113.85	110.20
3	E	441	FAD	C1'-N10-C9A	2.10	121.22	118.86
3	C	441	FAD	O2A-PA-O1A	2.11	123.95	112.53
5	E	600	LMT	O1B-C1B-C2B	2.15	113.34	108.10
4	E	501	AUK	C1-C2-C7	2.17	121.52	119.12

Continued on next page...

Continued from previous page...

Mol	Chain	Res	Type	Atoms	Z	Observed(°)	Ideal(°)
4	F	501	AUK	C1-C2-C7	2.18	121.53	119.12
4	D	501	AUK	C1-C2-C7	2.20	121.55	119.12
5	A	600	LMT	C1B-O5B-C5B	2.20	118.01	113.75
4	E	501	AUK	C23-C13-C14	2.21	118.78	115.41
5	C	600	LMT	O5B-C5B-C6B	2.25	112.05	106.36
4	D	501	AUK	C24-C17-C18	2.26	118.86	115.41
4	B	501	AUK	C1-C2-C7	2.30	121.67	119.12
5	F	600	LMT	C1-O1'-C1'	2.31	117.97	113.94
3	E	441	FAD	C4X-N5-C5X	2.39	119.52	116.76
4	B	501	AUK	C23-C13-C14	2.43	119.12	115.41
4	A	501	AUK	C1-C2-C7	2.45	121.83	119.12
3	C	441	FAD	C4X-N5-C5X	2.47	119.61	116.76
5	C	600	LMT	O1B-C1B-C2B	2.48	114.14	108.10
5	C	600	LMT	C3B-C4B-C5B	2.49	114.54	110.20
5	C	600	LMT	C4B-C3B-C2B	2.53	115.52	110.79
3	D	441	FAD	C4X-N5-C5X	2.54	119.68	116.76
3	F	441	FAD	C1'-N10-C9A	2.55	121.72	118.86
4	D	501	AUK	C23-C13-C14	2.58	119.34	115.41
5	B	600	LMT	C1-O1'-C1'	2.59	118.47	113.94
4	B	501	AUK	C1-C2-C3	2.63	119.27	118.06
4	C	501	AUK	C8-C11-C12	2.66	116.66	112.30
3	A	441	FAD	C4X-N5-C5X	2.66	119.83	116.76
4	C	501	AUK	C24-C17-C18	2.69	119.51	115.41
4	C	501	AUK	C1-C2-C3	2.70	119.30	118.06
4	E	501	AUK	C1-C2-C3	2.71	119.31	118.06
3	F	441	FAD	C4X-N5-C5X	2.79	119.97	116.76
5	E	600	LMT	O1'-C1'-C2'	2.80	111.58	108.04
4	E	501	AUK	C8-C11-C12	2.81	116.91	112.30
4	A	501	AUK	C24-C17-C18	2.83	119.73	115.41
3	C	441	FAD	C5X-C9A-N10	2.94	119.85	117.62
3	A	441	FAD	C5X-C9A-N10	2.99	119.89	117.62
3	F	441	FAD	C5X-C9A-N10	3.04	119.93	117.62
5	D	600	LMT	O5B-C5B-C6B	3.04	114.05	106.36
4	E	501	AUK	C24-C17-C18	3.39	120.59	115.41
4	F	501	AUK	C24-C17-C18	3.43	120.65	115.41
3	C	441	FAD	C1'-N10-C9A	3.59	122.89	118.86
4	B	501	AUK	C24-C17-C18	3.61	120.91	115.41
4	A	501	AUK	C8-C11-C12	3.67	118.31	112.30
3	D	441	FAD	C5X-C9A-N10	3.75	120.47	117.62
5	F	600	LMT	O1B-C1B-C2B	3.83	117.43	108.10
4	F	501	AUK	C8-C11-C12	3.88	118.65	112.30
3	B	441	FAD	C5X-C9A-N10	3.98	120.64	117.62

Continued on next page...

Continued from previous page...

Mol	Chain	Res	Type	Atoms	Z	Observed(°)	Ideal(°)
5	A	600	LMT	O1'-C1'-C2'	4.05	113.15	108.04
4	D	501	AUK	C8-C11-C12	4.33	119.40	112.30
3	E	441	FAD	C5X-C9A-N10	4.34	120.92	117.62
5	B	600	LMT	O1'-C1'-C2'	5.13	114.52	108.04
3	B	441	FAD	C4-N3-C2	5.19	119.73	115.25
3	A	441	FAD	C4-N3-C2	5.41	119.93	115.25
5	F	600	LMT	O1'-C1'-C2'	5.62	115.14	108.04
3	C	441	FAD	C4-N3-C2	5.75	120.22	115.25
3	F	441	FAD	C4-N3-C2	5.81	120.27	115.25
3	D	441	FAD	C4-N3-C2	6.05	120.48	115.25
3	E	441	FAD	C4-N3-C2	6.34	120.73	115.25

There are no chirality outliers.

All (3) torsion outliers are listed below:

Mol	Chain	Res	Type	Atoms
4	F	501	AUK	C9-C8-C11-C12
4	A	501	AUK	C9-C8-C11-C12
5	B	600	LMT	C1-O1'-C1'-O5'

There are no ring outliers.

34 monomers are involved in 144 short contacts:

Mol	Chain	Res	Type	Clashes	Symm-Clashes
2	A	434	SO4	1	0
3	A	441	FAD	1	0
4	A	501	AUK	16	0
5	A	600	LMT	15	0
7	A	800	PS9	4	0
2	B	432	SO4	1	0
2	B	435	SO4	1	0
3	B	441	FAD	3	0
4	B	501	AUK	15	0
5	B	600	LMT	10	0
7	B	800	PS9	3	0
2	C	431	SO4	1	0
2	C	434	SO4	1	0
3	C	441	FAD	1	0
4	C	501	AUK	25	0
5	C	600	LMT	11	0
7	C	800	PS9	2	0

Continued on next page...

Continued from previous page...

Mol	Chain	Res	Type	Clashes	Symm-Clashes
2	D	431	SO4	1	0
2	D	432	SO4	2	0
2	D	434	SO4	1	0
3	D	441	FAD	1	0
4	D	501	AUK	26	0
5	D	600	LMT	4	0
7	D	800	PS9	4	0
2	E	434	SO4	4	0
3	E	441	FAD	2	0
4	E	501	AUK	20	0
5	E	600	LMT	26	0
7	E	800	PS9	3	0
2	F	434	SO4	1	0
3	F	441	FAD	2	0
4	F	501	AUK	6	0
5	F	600	LMT	5	0
7	F	800	PS9	1	0

5.7 Other polymers [i](#)

There are no such residues in this entry.

5.8 Polymer linkage issues [i](#)

There are no chain breaks in this entry.

6 Fit of model and data ⓘ

6.1 Protein, DNA and RNA chains ⓘ

In the following table, the column labelled ‘#RSRZ> 2’ contains the number (and percentage) of RSRZ outliers, followed by percent RSRZ outliers for the chain as percentile scores relative to all X-ray entries and entries of similar resolution. The OWAB column contains the minimum, median, 95th percentile and maximum values of the occupancy-weighted average B-factor per residue. The column labelled ‘Q< 0.9’ lists the number of (and percentage) of residues with an average occupancy less than 0.9.

Mol	Chain	Analysed	<RSRZ>	#RSRZ>2	OWAB(Å ²)	Q<0.9
1	A	428/430 (99%)	-0.04	8 (1%) 70 66	32, 41, 50, 54	0
1	B	428/430 (99%)	-0.04	8 (1%) 70 66	32, 41, 50, 54	0
1	C	428/430 (99%)	0.02	6 (1%) 78 76	32, 43, 53, 61	0
1	D	428/430 (99%)	0.34	37 (8%) 13 8	33, 43, 51, 56	0
1	E	428/430 (99%)	0.08	12 (2%) 56 50	32, 44, 51, 54	0
1	F	428/430 (99%)	0.01	10 (2%) 64 59	35, 44, 51, 58	0
All	All	2568/2580 (99%)	0.06	81 (3%) 51 43	32, 42, 51, 61	0

All (81) RSRZ outliers are listed below:

Mol	Chain	Res	Type	RSRZ
1	C	430	CYS	6.1
1	D	430	CYS	5.2
1	E	430	CYS	5.0
1	F	430	CYS	4.8
1	A	430	CYS	4.7
1	B	430	CYS	4.1
1	E	84	ASP	4.0
1	B	237	ASN	3.6
1	E	336	PRO	3.4
1	D	334	ASN	3.2
1	D	117	GLU	3.2
1	D	97	GLU	3.1
1	E	141	ALA	3.1
1	D	93	GLY	3.1
1	D	141	ALA	3.1
1	F	91	GLN	3.1
1	F	2	ALA	3.0
1	D	92	SER	3.0
1	E	91	GLN	2.9

Continued on next page...

Continued from previous page...

Mol	Chain	Res	Type	RSRZ
1	D	95	LYS	2.9
1	E	27	ASP	2.9
1	D	86	ASN	2.9
1	D	236	LEU	2.9
1	E	353	GLU	2.9
1	C	92	SER	2.9
1	E	92	SER	2.9
1	A	2	ALA	2.9
1	B	91	GLN	2.8
1	D	138	GLU	2.8
1	D	285	THR	2.8
1	F	97	GLU	2.7
1	F	56	GLU	2.7
1	E	85	ALA	2.7
1	D	239	ASN	2.7
1	D	423	GLU	2.7
1	D	353	GLU	2.6
1	D	303	LYS	2.6
1	D	229	ASP	2.6
1	D	238	GLY	2.6
1	A	92	SER	2.6
1	D	91	GLN	2.5
1	D	237	ASN	2.5
1	A	237	ASN	2.5
1	A	423	GLU	2.5
1	B	420	LYS	2.5
1	D	118	GLU	2.5
1	D	2	ALA	2.4
1	D	79	GLU	2.4
1	D	336	PRO	2.4
1	C	408	GLU	2.4
1	D	27	ASP	2.4
1	C	141	ALA	2.4
1	D	131	GLU	2.3
1	B	27	ASP	2.3
1	D	173	LYS	2.3
1	D	265	ASP	2.3
1	F	235	ASP	2.3
1	D	70	ASN	2.3
1	F	114[A]	GLU	2.3
1	C	91	GLN	2.3
1	A	27	ASP	2.2

Continued on next page...

Continued from previous page...

Mol	Chain	Res	Type	RSRZ
1	A	353	GLU	2.2
1	D	114[A]	GLU	2.2
1	B	236	LEU	2.2
1	D	89	THR	2.2
1	D	241	HIS	2.2
1	B	423	GLU	2.2
1	D	140	TYR	2.1
1	E	114[A]	GLU	2.1
1	C	421	ASP	2.1
1	F	84	ASP	2.1
1	A	114[A]	GLU	2.1
1	E	131	GLU	2.0
1	D	284	PRO	2.0
1	F	142	ASN	2.0
1	E	271	ALA	2.0
1	D	119	ASN	2.0
1	D	262	SER	2.0
1	F	92	SER	2.0
1	B	131[A]	GLU	2.0
1	D	271	ALA	2.0

6.2 Non-standard residues in protein, DNA, RNA chains

In the following table, the Atoms column lists the number of modelled atoms in the group and the number defined in the chemical component dictionary. LLDF column lists the quality of electron density of the group with respect to its neighbouring residues in protein, DNA or RNA chains. The B-factors column lists the minimum, median, 95th percentile and maximum values of B factors of atoms in the group. The column labelled 'Q< 0.9' lists the number of atoms with occupancy less than 0.9.

Mol	Type	Chain	Res	Atoms	RSCC	RSR	LLDF	B-factors(Å ²)	Q<0.9
1	CSS	B	156[B]	7/8	0.92	0.21	-	41,41,42,45	2
1	CSS	E	156[B]	7/8	0.96	0.18	-	47,47,48,50	2
1	CSS	E	156[A]	6/8	0.96	0.18	-	47,47,47,48	1
1	CSS	A	156[B]	7/8	0.98	0.17	-	40,40,41,43	2
1	CSS	A	156[A]	6/8	0.98	0.17	-	40,40,40,43	1
1	CSS	C	156[A]	6/8	0.97	0.20	-	45,45,45,46	1
1	CSS	D	156[B]	7/8	0.96	0.14	-	40,40,41,43	2
1	CSS	C	156[B]	7/8	0.97	0.20	-	45,45,46,48	2
1	CSS	D	156[A]	6/8	0.96	0.14	-	40,40,41,41	1
1	CSS	F	156[A]	6/8	0.97	0.17	-	45,45,45,46	1
1	CSS	F	156[B]	7/8	0.97	0.17	-	45,45,46,46	2

Continued on next page...

Continued from previous page...

Mol	Type	Chain	Res	Atoms	RSCC	RSR	LLDF	B-factors(\AA^2)	Q<0.9
1	CSS	B	156[A]	6/8	0.92	0.21	-	41,41,42,42	1

6.3 Carbohydrates [i](#)

There are no carbohydrates in this entry.

6.4 Ligands [i](#)

In the following table, the Atoms column lists the number of modelled atoms in the group and the number defined in the chemical component dictionary. LLDF column lists the quality of electron density of the group with respect to its neighbouring residues in protein, DNA or RNA chains. The B-factors column lists the minimum, median, 95th percentile and maximum values of B factors of atoms in the group. The column labelled 'Q< 0.9' lists the number of atoms with occupancy less than 0.9.

Mol	Type	Chain	Res	Atoms	RSCC	RSR	LLDF	B-factors(\AA^2)	Q<0.9
6	H2S	A	700	1/1	0.90	0.36	34.86	36,36,36,36	1
7	PS9	B	800	8/8	0.60	0.74	31.51	50,51,51,52	8
7	PS9	D	800	8/8	0.69	0.62	31.47	46,47,48,48	8
4	AUK	D	501	28/28	0.81	0.50	18.13	47,50,50,50	28
6	H2S	C	700	1/1	0.88	0.36	16.74	43,43,43,43	1
7	PS9	F	800	8/8	0.72	0.71	16.52	48,49,49,49	8
5	LMT	A	600	35/35	0.57	0.49	13.24	35,47,56,57	35
4	AUK	A	501	28/28	0.70	0.57	12.42	43,46,46,46	28
7	PS9	E	800	8/8	0.67	0.78	12.36	54,55,55,56	8
7	PS9	A	800	7/8	0.76	0.63	11.93	45,46,47,47	7
7	PS9	C	800	8/8	0.74	0.53	10.90	51,52,53,53	8
4	AUK	B	501	28/28	0.72	0.49	10.76	42,48,49,49	28
5	LMT	C	600	35/35	0.65	0.44	10.47	38,51,54,54	35
4	AUK	C	501	28/28	0.80	0.48	9.84	32,38,38,38	28
5	LMT	F	600	35/35	0.59	0.51	9.08	29,47,52,54	35
4	AUK	F	501	28/28	0.73	0.46	8.96	34,38,39,39	28
5	LMT	B	600	35/35	0.63	0.46	7.82	21,33,41,42	35
4	AUK	E	501	28/28	0.68	0.56	7.71	33,41,41,41	28
5	LMT	D	600	35/35	0.68	0.39	5.57	22,27,32,32	35
5	LMT	E	600	35/35	0.69	0.41	5.46	28,42,45,45	35
6	H2S	F	700	1/1	0.89	0.27	4.57	43,43,43,43	1
6	H2S	B	700	1/1	0.89	0.23	4.35	42,42,42,42	1
6	H2S	E	700	1/1	0.85	0.26	3.62	44,44,44,44	1
2	SO4	C	433	5/5	0.81	0.34	1.66	44,44,45,45	5

Continued on next page...

Continued from previous page...

Mol	Type	Chain	Res	Atoms	RSCC	RSR	LLDF	B-factors(\AA^2)	Q<0.9
2	SO4	B	433	5/5	0.88	0.29	1.52	40,40,40,41	5
2	SO4	E	433	5/5	0.84	0.31	1.40	48,48,48,49	5
6	H2S	D	700	1/1	0.94	0.20	1.17	52,52,52,52	1
2	SO4	D	433	5/5	0.87	0.31	0.79	76,76,77,77	5
2	SO4	F	433	5/5	0.91	0.21	-0.51	38,38,38,38	5
3	FAD	F	441	53/53	0.96	0.14	-0.63	33,41,46,47	0
3	FAD	D	441	53/53	0.95	0.15	-0.64	39,50,52,52	0
2	SO4	A	433	5/5	0.94	0.13	-0.71	46,47,47,48	5
3	FAD	E	441	53/53	0.95	0.15	-0.75	32,38,46,46	0
3	FAD	B	441	53/53	0.96	0.14	-0.94	30,38,41,41	0
3	FAD	A	441	53/53	0.96	0.13	-1.41	23,30,34,34	0
3	FAD	C	441	53/53	0.97	0.13	-1.62	28,34,41,42	0
2	SO4	D	435	5/5	0.79	0.32	-	43,43,44,44	5
2	SO4	C	432	5/5	0.91	0.22	-	56,56,56,57	5
2	SO4	D	431	5/5	0.85	0.20	-	37,38,38,38	5
2	SO4	F	434	5/5	0.74	0.50	-	37,37,38,39	5
2	SO4	C	434	5/5	0.81	0.34	-	41,41,42,42	5
2	SO4	E	434	5/5	0.91	0.27	-	39,40,40,40	5
2	SO4	A	434	5/5	0.93	0.21	-	33,33,34,34	5
2	SO4	E	435	5/5	0.87	0.32	-	58,58,59,59	5
2	SO4	B	435	5/5	0.80	0.34	-	37,38,38,39	5
2	SO4	E	431	5/5	0.66	0.40	-	52,53,53,53	5
2	SO4	D	434	5/5	0.92	0.38	-	45,45,46,46	5
2	SO4	B	432	5/5	0.93	0.24	-	44,44,45,45	5
2	SO4	E	432	5/5	0.93	0.26	-	52,52,53,53	5
2	SO4	B	431	5/5	0.95	0.20	-	46,46,47,47	5
2	SO4	B	434	5/5	0.89	0.25	-	39,40,40,40	5
2	SO4	C	431	5/5	0.82	0.26	-	39,39,40,40	5
2	SO4	D	432	5/5	0.94	0.16	-	46,47,47,47	5
2	SO4	A	431	5/5	0.78	0.32	-	52,53,53,54	5

6.5 Other polymers ⓘ

There are no such residues in this entry.