



# Full wwPDB X-ray Structure Validation Report ⓘ

Feb 1, 2016 – 05:19 PM GMT

PDB ID : 4HYM  
Title : Pyrrolopyrimidine inhibitors of dna gyrase b and topoisomerase iv, part i: structure guided discovery and optimization of dual targeting agents with potent, broad-spectrum enzymatic activity.  
Authors : Bensen, D.C.; Creighton, C.J.; Kwan, B.; Tari, L.W.  
Deposited on : 2012-11-13  
Resolution : 1.90 Å(reported)

This is a Full wwPDB X-ray Structure Validation Report for a publicly released PDB entry.  
We welcome your comments at [validation@mail.wwpdb.org](mailto:validation@mail.wwpdb.org)  
A user guide is available at  
<http://wwpdb.org/validation/2016/XrayValidationReportHelp>  
with specific help available everywhere you see the ⓘ symbol.

---

The following versions of software and data (see [references ⓘ](#)) were used in the production of this report:

MolProbity : 4.02b-467  
Mogul : 1.7 (RC4), CSD as536be (2015)  
Xtriage (Phenix) : 1.9-1692  
EDS : rb-20026688  
Percentile statistics : 20151230.v01 (using entries in the PDB archive December 30th 2015)  
Refmac : 5.8.0135  
CCP4 : 6.5.0  
Ideal geometry (proteins) : Engh & Huber (2001)  
Ideal geometry (DNA, RNA) : Parkinson et al. (1996)  
Validation Pipeline (wwPDB-VP) : trunk26865

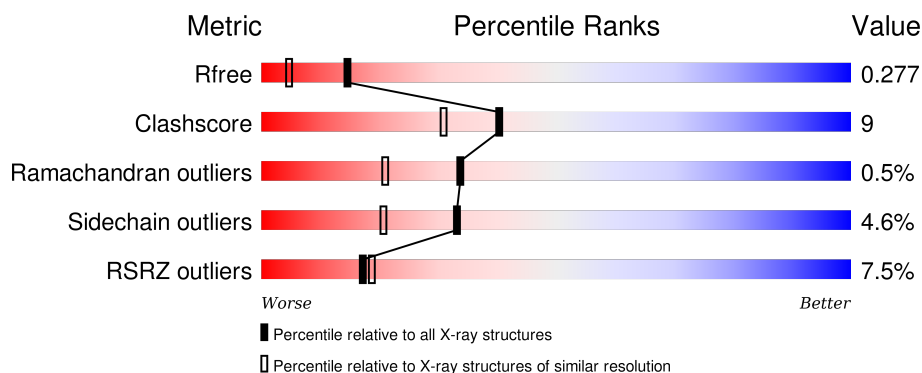
# 1 Overall quality at a glance

The following experimental techniques were used to determine the structure:

## *X-RAY DIFFRACTION*

The reported resolution of this entry is 1.90 Å.

Percentile scores (ranging between 0-100) for global validation metrics of the entry are shown in the following graphic. The table shows the number of entries on which the scores are based.



Metric	Whole archive (#Entries)	Similar resolution (#Entries, resolution range(Å))
$R_{free}$	91344	4755 (1.90-1.90)
Clashscore	102246	5398 (1.90-1.90)
Ramachandran outliers	100387	5338 (1.90-1.90)
Sidechain outliers	100360	5339 (1.90-1.90)
RSRZ outliers	91569	4766 (1.90-1.90)

The table below summarises the geometric issues observed across the polymeric chains and their fit to the electron density. The red, orange, yellow and green segments on the lower bar indicate the fraction of residues that contain outliers for  $\geq 3$ , 2, 1 and 0 types of geometric quality criteria. A grey segment represents the fraction of residues that are not modelled. The numeric value for each fraction is indicated below the corresponding segment, with a dot representing fractions  $\leq 5\%$ . The upper red bar (where present) indicates the fraction of residues that have poor fit to the electron density. The numeric value is given above the bar.

Mol	Chain	Length	Quality of chain
1	A	390	<div> <div>3%</div> <div>79%</div> <div>11%</div> <div>7%</div> </div>
1	B	390	<div> <div>8%</div> <div>47%</div> <div>9%</div> <div>42%</div> </div>

## 2 Entry composition

There are 3 unique types of molecules in this entry. The entry contains 5318 atoms, of which 0 are hydrogens and 0 are deuteriums.

In the tables below, the ZeroOcc column contains the number of atoms modelled with zero occupancy, the AltConf column contains the number of residues with at least one atom in alternate conformation and the Trace column contains the number of residues modelled with at most 2 atoms.

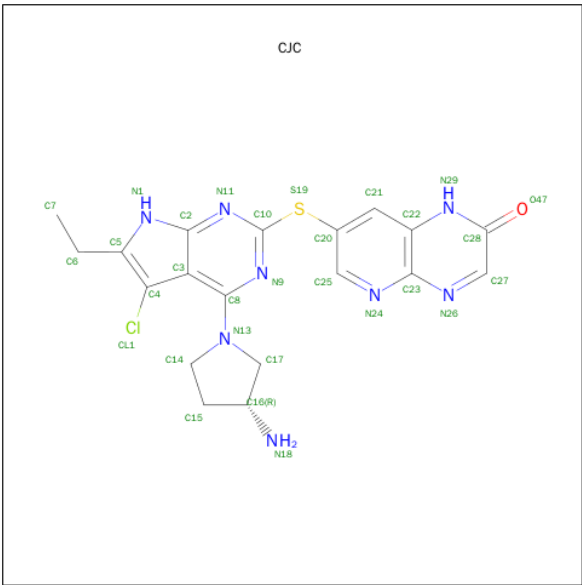
- Molecule 1 is a protein called Topoisomerase IV, subunit B.

Mol	Chain	Residues	Atoms					ZeroOcc	AltConf	Trace
1	A	361	Total	C	N	O	S	0	3	0
			2863	1826	479	550	8			
1	B	226	Total	C	N	O	S	0	0	0
			1791	1147	300	339	5			

There are 18 discrepancies between the modelled and reference sequences:

Chain	Residue	Modelled	Actual	Comment	Reference
A	258	PRO	LEU	SEE REMARK 999	UNP Q2A1P5
A	383	LEU	-	EXPRESSION TAG	UNP Q2A1P5
A	384	GLU	-	EXPRESSION TAG	UNP Q2A1P5
A	385	HIS	-	EXPRESSION TAG	UNP Q2A1P5
A	386	HIS	-	EXPRESSION TAG	UNP Q2A1P5
A	387	HIS	-	EXPRESSION TAG	UNP Q2A1P5
A	388	HIS	-	EXPRESSION TAG	UNP Q2A1P5
A	389	HIS	-	EXPRESSION TAG	UNP Q2A1P5
A	390	HIS	-	EXPRESSION TAG	UNP Q2A1P5
B	258	PRO	LEU	SEE REMARK 999	UNP Q2A1P5
B	383	LEU	-	EXPRESSION TAG	UNP Q2A1P5
B	384	GLU	-	EXPRESSION TAG	UNP Q2A1P5
B	385	HIS	-	EXPRESSION TAG	UNP Q2A1P5
B	386	HIS	-	EXPRESSION TAG	UNP Q2A1P5
B	387	HIS	-	EXPRESSION TAG	UNP Q2A1P5
B	388	HIS	-	EXPRESSION TAG	UNP Q2A1P5
B	389	HIS	-	EXPRESSION TAG	UNP Q2A1P5
B	390	HIS	-	EXPRESSION TAG	UNP Q2A1P5

- Molecule 2 is 7-({4-[(3R)-3-AMINOPYRROLIDIN-1-YL]-5-CHLORO-6-ETHYL-7H-PYRROLO[2,3-D]PYRIMIDIN-2-YL}SULFANYL)PYRIDO[2,3-B]PYRAZIN-2(1H)-ONE (three-letter code: CJC) (formula: C<sub>19</sub>H<sub>19</sub>ClN<sub>8</sub>OS).



Mol	Chain	Residues	Atoms						ZeroOcc	AltConf
			Total	C	Cl	N	O	S		
2	A	1	30	19	1	8	1	1	0	0

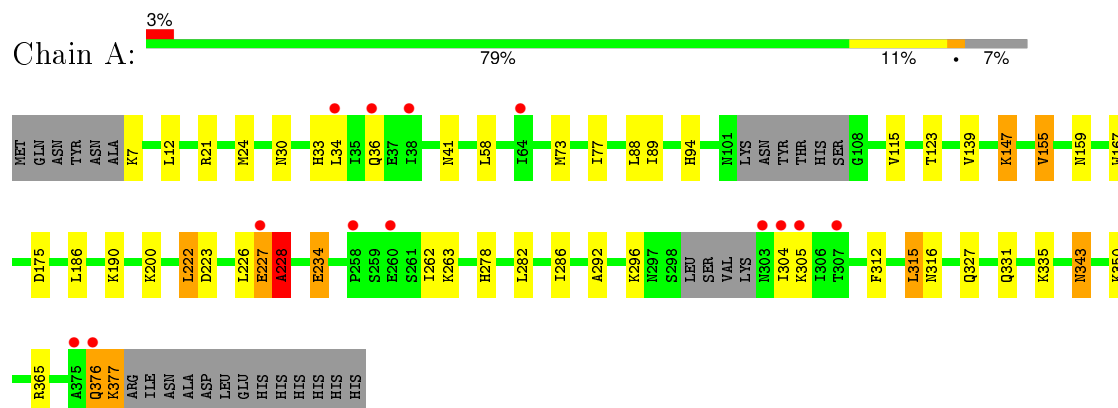
- Molecule 3 is water.

Mol	Chain	Residues	Atoms		ZeroOcc	AltConf
3	A	439	Total	O	0	0
			439	439		
3	B	195	Total	O	0	0
			195	195		

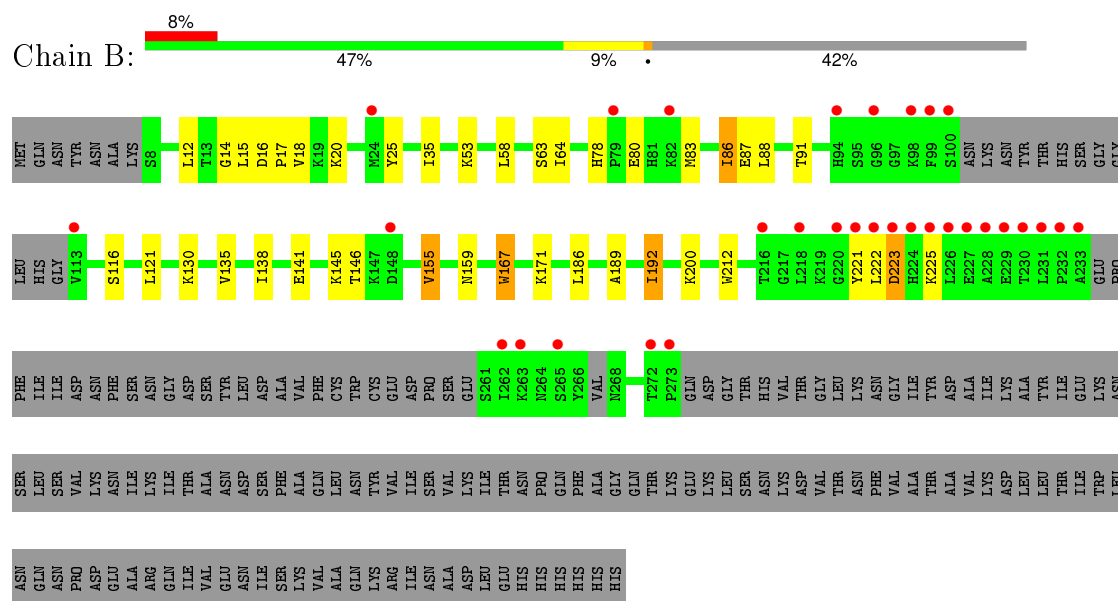
### 3 Residue-property plots [i](#)

These plots are drawn for all protein, RNA and DNA chains in the entry. The first graphic for a chain summarises the proportions of errors displayed in the second graphic. The second graphic shows the sequence view annotated by issues in geometry and electron density. Residues are color-coded according to the number of geometric quality criteria for which they contain at least one outlier: green = 0, yellow = 1, orange = 2 and red = 3 or more. A red dot above a residue indicates a poor fit to the electron density ( $RSRZ > 2$ ). Stretches of 2 or more consecutive residues without any outlier are shown as a green connector. Residues present in the sample, but not in the model, are shown in grey.

- Molecule 1: Topoisomerase IV, subunit B



- Molecule 1: Topoisomerase IV, subunit B



## 4 Data and refinement statistics

Property	Value	Source
Space group	P 1 21 1	Depositor
Cell constants a, b, c, $\alpha$ , $\beta$ , $\gamma$	44.16 Å 130.28 Å 80.27 Å 90.00° 98.12° 90.00°	Depositor
Resolution (Å)	43.43 – 1.90 38.11 – 1.90	Depositor EDS
% Data completeness (in resolution range)	99.4 (43.43-1.90) 99.4 (38.11-1.90)	Depositor EDS
$R_{merge}$	0.08	Depositor
$R_{sym}$	(Not available)	Depositor
$\langle I/\sigma(I) \rangle$ <sup>1</sup>	2.09 (at 1.89 Å)	Xtriage
Refinement program	REFMAC 5.6.0117	Depositor
R, $R_{free}$	0.238 , 0.276 0.238 , 0.277	Depositor DCC
$R_{free}$ test set	3563 reflections (5.35%)	DCC
Wilson B-factor (Å <sup>2</sup> )	28.3	Xtriage
Anisotropy	0.051	Xtriage
Bulk solvent $k_{sol}$ (e/Å <sup>3</sup> ), $B_{sol}$ (Å <sup>2</sup> )	0.34 , 49.3	EDS
Estimated twinning fraction	No twinning to report.	Xtriage
L-test for twinning <sup>2</sup>	$\langle  L  \rangle = 0.52$ , $\langle L^2 \rangle = 0.35$	Xtriage
Outliers	0 of 70136 reflections	Xtriage
$F_o, F_c$ correlation	0.93	EDS
Total number of atoms	5318	wwPDB-VP
Average B, all atoms (Å <sup>2</sup> )	37.0	wwPDB-VP

Xtriage's analysis on translational NCS is as follows: *The largest off-origin peak in the Patterson function is 5.29% of the height of the origin peak. No significant pseudotranslation is detected.*

<sup>1</sup>Intensities estimated from amplitudes.

<sup>2</sup>Theoretical values of  $\langle |L| \rangle$ ,  $\langle L^2 \rangle$  for acentric reflections are 0.5, 0.375 respectively for untwinned datasets, and 0.333, 0.2 for perfectly twinned datasets.

## 5 Model quality [i](#)

### 5.1 Standard geometry [i](#)

Bond lengths and bond angles in the following residue types are not validated in this section: CJC

The Z score for a bond length (or angle) is the number of standard deviations the observed value is removed from the expected value. A bond length (or angle) with  $|Z| > 5$  is considered an outlier worth inspection. RMSZ is the root-mean-square of all Z scores of the bond lengths (or angles).

Mol	Chain	Bond lengths		Bond angles	
		RMSZ	$\# Z  > 5$	RMSZ	$\# Z  > 5$
1	A	0.68	1/2924 (0.0%)	0.76	1/3950 (0.0%)
1	B	0.60	2/1822 (0.1%)	0.71	0/2454
All	All	0.65	3/4746 (0.1%)	0.74	1/6404 (0.0%)

All (3) bond length outliers are listed below:

Mol	Chain	Res	Type	Atoms	Z	Observed(Å)	Ideal(Å)
1	B	212	TRP	CD2-CE2	5.75	1.48	1.41
1	B	167	TRP	CD2-CE2	5.24	1.47	1.41
1	A	167	TRP	CD2-CE2	5.21	1.47	1.41

All (1) bond angle outliers are listed below:

Mol	Chain	Res	Type	Atoms	Z	Observed(°)	Ideal(°)
1	A	228	ALA	N-CA-C	5.04	124.62	111.00

There are no chirality outliers.

There are no planarity outliers.

### 5.2 Too-close contacts [i](#)

In the following table, the Non-H and H(model) columns list the number of non-hydrogen atoms and hydrogen atoms in the chain respectively. The H(added) column lists the number of hydrogen atoms added and optimized by MolProbity. The Clashes column lists the number of clashes within the asymmetric unit, whereas Symm-Clashes lists symmetry related clashes.

Mol	Chain	Non-H	H(model)	H(added)	Clashes	Symm-Clashes
1	A	2863	0	2889	53	0
1	B	1791	0	1825	29	0

*Continued on next page...*

*Continued from previous page...*

Mol	Chain	Non-H	H(model)	H(added)	Clashes	Symm-Clashes
2	A	30	0	19	6	0
3	A	439	0	0	18	0
3	B	195	0	0	10	0
All	All	5318	0	4733	82	0

The all-atom clashscore is defined as the number of clashes found per 1000 atoms (including hydrogen atoms). The all-atom clashscore for this structure is 9.

All (82) close contacts within the same asymmetric unit are listed below, sorted by their clash magnitude.

Atom-1	Atom-2	Interatomic distance (Å)	Clash overlap (Å)
1:A:227:GLU:HA	1:A:228:ALA:O	1.59	1.00
1:A:365:ARG:HD3	3:A:844:HOH:O	1.69	0.90
1:A:343:ASN:H	1:A:343:ASN:ND2	1.69	0.88
1:A:147[B]:LYS:HE2	3:A:609:HOH:O	1.76	0.84
1:A:73:MET:HG2	2:A:401:CJC:C8	2.08	0.83
1:A:343:ASN:H	1:A:343:ASN:HD22	1.22	0.83
1:A:263:LYS:HE3	3:A:727:HOH:O	1.88	0.74
1:A:343:ASN:HD22	1:A:343:ASN:N	1.89	0.69
1:B:78:HIS:HD2	3:B:516:HOH:O	1.76	0.69
1:B:155:VAL:HG13	1:B:159:ASN:HB3	1.76	0.68
1:A:21:ARG:HB3	1:A:24[B]:MET:HG3	1.75	0.68
1:A:304:ILE:HG22	1:A:305:LYS:H	1.59	0.68
1:A:200:LYS:HE2	3:A:706:HOH:O	1.94	0.68
1:A:343:ASN:ND2	1:A:343:ASN:N	2.45	0.64
1:A:304:ILE:HG22	1:A:305:LYS:N	2.12	0.64
1:B:222:LEU:HA	3:B:497:HOH:O	1.98	0.64
1:B:15:LEU:HD21	1:B:116:SER:HB2	1.82	0.60
1:B:14:GLY:O	1:B:15:LEU:HB2	2.02	0.60
1:A:228:ALA:HB3	3:A:901:HOH:O	2.00	0.60
1:B:225:LYS:HB2	3:B:497:HOH:O	2.02	0.59
1:B:223:ASP:N	1:B:223:ASP:OD2	2.33	0.59
1:A:155:VAL:HG13	1:A:159:ASN:HB3	1.84	0.59
1:B:91:THR:HG23	3:B:532:HOH:O	2.06	0.56
1:A:234:GLU:HG3	3:A:587:HOH:O	2.04	0.56
1:A:263:LYS:HE2	3:A:582:HOH:O	2.06	0.56
1:A:147[A]:LYS:HE3	1:A:147[A]:LYS:CA	2.30	0.55
1:A:262:ILE:H	1:A:316:ASN:HD22	1.56	0.54
1:B:145:LYS:NZ	3:B:552:HOH:O	2.42	0.53
1:A:327:GLN:HG2	3:A:708:HOH:O	2.08	0.52
1:B:78:HIS:CD2	3:B:516:HOH:O	2.56	0.52

*Continued on next page...*



*Continued from previous page...*

Atom-1	Atom-2	Interatomic distance (Å)	Clash overlap (Å)
1:B:86:ILE:HD12	1:B:138:ILE:HG21	1.92	0.52
1:A:376:GLN:HG2	1:A:376:GLN:O	2.10	0.52
1:B:15:LEU:C	1:B:17:PRO:HD2	2.30	0.52
1:B:200:LYS:HE2	3:B:581:HOH:O	2.10	0.52
1:A:41:ASN:HB3	2:A:401:CJC:CL1	2.47	0.51
1:B:83:MET:HE3	1:B:88:LEU:HB2	1.93	0.50
1:A:350:LYS:HE2	3:A:636:HOH:O	2.10	0.50
1:A:115:VAL:HG11	2:A:401:CJC:CL1	2.49	0.50
1:B:16:ASP:N	1:B:17:PRO:CD	2.75	0.50
1:A:304:ILE:CG2	1:A:305:LYS:H	2.23	0.50
1:B:35:ILE:HG12	1:B:64:ILE:HG21	1.93	0.49
1:B:16:ASP:HB2	3:B:513:HOH:O	2.12	0.49
1:A:292:ALA:O	1:A:296:LYS:HB2	2.11	0.49
1:B:189:ALA:O	1:B:192:ILE:HD13	2.13	0.48
1:A:227:GLU:HA	1:A:228:ALA:C	2.29	0.48
1:B:83:MET:HG3	1:B:87:GLU:OE2	2.12	0.48
1:A:33:HIS:HD2	3:A:729:HOH:O	1.95	0.48
1:B:130:LYS:HG2	1:B:135:VAL:HG22	1.95	0.48
1:A:377:LYS:HG3	3:A:694:HOH:O	2.14	0.48
1:A:226:LEU:O	1:A:227:GLU:C	2.53	0.47
1:A:343:ASN:HB3	3:A:635:HOH:O	2.16	0.46
1:A:123:THR:HG21	3:A:621:HOH:O	2.14	0.46
1:A:263:LYS:CE	3:A:582:HOH:O	2.63	0.46
1:A:123:THR:CG2	3:A:621:HOH:O	2.64	0.46
1:A:77:ILE:HD11	3:A:835:HOH:O	2.16	0.45
1:A:147[A]:LYS:HE3	1:A:147[A]:LYS:HA	1.98	0.45
1:A:73:MET:HG2	2:A:401:CJC:N9	2.31	0.45
1:A:304:ILE:CG2	1:A:305:LYS:N	2.78	0.45
1:B:16:ASP:O	1:B:20:LYS:HG2	2.18	0.44
1:B:221:TYR:N	3:B:427:HOH:O	2.51	0.44
1:A:262:ILE:H	1:A:316:ASN:ND2	2.16	0.43
1:A:12:LEU:HD21	1:A:94:HIS:CD2	2.53	0.43
1:A:36[B]:GLN:NE2	1:A:190:LYS:NZ	2.66	0.43
1:B:53:LYS:NZ	3:B:549:HOH:O	2.52	0.43
1:A:89:ILE:HD13	2:A:401:CJC:H6	2.01	0.43
1:B:14:GLY:O	1:B:15:LEU:CB	2.67	0.42
1:A:263:LYS:NZ	3:A:582:HOH:O	2.44	0.42
1:A:282:LEU:O	1:A:286:ILE:HG12	2.19	0.42
1:A:88:LEU:O	1:A:94:HIS:HE1	2.02	0.42
1:A:139:VAL:HB	1:A:147[B]:LYS:HB2	2.00	0.42
1:A:312:PHE:CE1	1:A:315:LEU:HD12	2.54	0.42

*Continued on next page...*

Continued from previous page...

Atom-1	Atom-2	Interatomic distance (Å)	Clash overlap (Å)
1:A:36[B]:GLN:HE21	1:A:190:LYS:NZ	2.17	0.42
1:B:83:MET:CE	1:B:88:LEU:HA	2.50	0.41
1:B:63:SER:HB3	1:B:167:TRP:CD1	2.55	0.41
1:A:147[A]:LYS:HE3	1:A:147[A]:LYS:HB2	1.61	0.41
1:A:335:LYS:HE2	3:A:794:HOH:O	2.21	0.41
1:B:83:MET:HE1	1:B:88:LEU:HA	2.03	0.41
1:B:141:GLU:HB2	1:B:146:THR:HG21	2.03	0.41
1:A:222:LEU:HD12	1:A:222:LEU:HA	1.97	0.41
1:B:18:VAL:HA	1:B:25:TYR:CE2	2.56	0.41
1:A:73:MET:CG	2:A:401:CJC:C8	2.91	0.40
1:A:30:ASN:HA	1:A:175:ASP:O	2.20	0.40

There are no symmetry-related clashes.

## 5.3 Torsion angles ⓘ

### 5.3.1 Protein backbone ⓘ

In the following table, the Percentiles column shows the percent Ramachandran outliers of the chain as a percentile score with respect to all X-ray entries followed by that with respect to entries of similar resolution.

The Analysed column shows the number of residues for which the backbone conformation was analysed, and the total number of residues.

Mol	Chain	Analysed	Favoured	Allowed	Outliers	Percentiles	
1	A	358/390 (92%)	347 (97%)	9 (2%)	2 (1%)	30	17
1	B	218/390 (56%)	205 (94%)	12 (6%)	1 (0%)	34	21
All	All	576/780 (74%)	552 (96%)	21 (4%)	3 (0%)	34	21

All (3) Ramachandran outliers are listed below:

Mol	Chain	Res	Type
1	A	228	ALA
1	A	227	GLU
1	B	80	GLU

### 5.3.2 Protein sidechains ⓘ

In the following table, the Percentiles column shows the percent sidechain outliers of the chain as a percentile score with respect to all X-ray entries followed by that with respect to entries of similar resolution.

The Analysed column shows the number of residues for which the sidechain conformation was analysed, and the total number of residues.

Mol	Chain	Analysed	Rotameric	Outliers	Percentiles	
1	A	320/344 (93%)	304 (95%)	16 (5%)	30	18
1	B	200/344 (58%)	191 (96%)	9 (4%)	34	21
All	All	520/688 (76%)	495 (95%)	25 (5%)	33	19

All (25) residues with a non-rotameric sidechain are listed below:

Mol	Chain	Res	Type
1	A	7	LYS
1	A	34	LEU
1	A	58	LEU
1	A	147[A]	LYS
1	A	147[B]	LYS
1	A	155	VAL
1	A	186	LEU
1	A	222	LEU
1	A	223	ASP
1	A	234	GLU
1	A	278	HIS
1	A	315	LEU
1	A	331	GLN
1	A	343	ASN
1	A	376	GLN
1	A	377	LYS
1	B	12	LEU
1	B	58	LEU
1	B	86	ILE
1	B	121	LEU
1	B	155	VAL
1	B	171	LYS
1	B	186	LEU
1	B	192	ILE
1	B	223	ASP

Some sidechains can be flipped to improve hydrogen bonding and reduce clashes. All (5) such

sidechains are listed below:

Mol	Chain	Res	Type
1	A	94	HIS
1	A	316	ASN
1	A	343	ASN
1	A	366	GLN
1	B	81	HIS

### 5.3.3 RNA [i](#)

There are no RNA molecules in this entry.

## 5.4 Non-standard residues in protein, DNA, RNA chains [i](#)

There are no non-standard protein/DNA/RNA residues in this entry.

## 5.5 Carbohydrates [i](#)

There are no carbohydrates in this entry.

## 5.6 Ligand geometry [i](#)

1 ligand is modelled in this entry.

In the following table, the Counts columns list the number of bonds (or angles) for which Mogul statistics could be retrieved, the number of bonds (or angles) that are observed in the model and the number of bonds (or angles) that are defined in the chemical component dictionary. The Link column lists molecule types, if any, to which the group is linked. The Z score for a bond length (or angle) is the number of standard deviations the observed value is removed from the expected value. A bond length (or angle) with  $|Z| > 2$  is considered an outlier worth inspection. RMSZ is the root-mean-square of all Z scores of the bond lengths (or angles).

Mol	Type	Chain	Res	Link	Bond lengths			Bond angles		
					Counts	RMSZ	$\# Z  > 2$	Counts	RMSZ	$\# Z  > 2$
2	CJC	A	401	-	32,34,34	2.07	7 (21%)	30,50,50	2.53	16 (53%)

In the following table, the Chirals column lists the number of chiral outliers, the number of chiral centers analysed, the number of these observed in the model and the number defined in the chemical component dictionary. Similar counts are reported in the Torsion and Rings columns. '-' means no outliers of that kind were identified.

Mol	Type	Chain	Res	Link	Chirals	Torsions	Rings
2	CJC	A	401	-	-	0/9/19/19	0/5/5/5

All (7) bond length outliers are listed below:

Mol	Chain	Res	Type	Atoms	Z	Observed(Å)	Ideal(Å)
2	A	401	CJC	C10-S19	-5.23	1.68	1.76
2	A	401	CJC	C20-S19	-3.68	1.70	1.77
2	A	401	CJC	C3-C2	2.13	1.48	1.43
2	A	401	CJC	C8-N9	2.21	1.35	1.32
2	A	401	CJC	C8-C3	3.61	1.50	1.43
2	A	401	CJC	C22-C23	4.86	1.50	1.41
2	A	401	CJC	C4-C5	4.89	1.47	1.38

All (16) bond angle outliers are listed below:

Mol	Chain	Res	Type	Atoms	Z	Observed(°)	Ideal(°)
2	A	401	CJC	C4-C3-C2	-4.78	97.94	106.63
2	A	401	CJC	C27-C28-N29	-4.07	121.21	123.17
2	A	401	CJC	C5-C4-CL1	-3.14	121.64	126.59
2	A	401	CJC	C6-C5-C4	-2.88	125.55	130.41
2	A	401	CJC	C22-C23-N26	-2.73	119.21	122.08
2	A	401	CJC	C7-C6-C5	-2.65	108.20	115.03
2	A	401	CJC	C22-C23-N24	-2.61	119.33	122.08
2	A	401	CJC	C27-N26-C23	2.13	119.44	116.93
2	A	401	CJC	C15-C16-C17	2.22	105.31	102.03
2	A	401	CJC	C21-C22-N29	2.62	122.33	118.96
2	A	401	CJC	C14-C15-C16	2.66	109.00	103.66
2	A	401	CJC	C25-N24-C23	2.75	120.17	116.93
2	A	401	CJC	C10-N9-C8	2.87	121.48	113.12
2	A	401	CJC	C3-C8-N13	2.92	128.66	121.44
2	A	401	CJC	N24-C23-N26	4.30	121.47	114.94
2	A	401	CJC	C10-S19-C20	5.53	111.78	103.39

There are no chirality outliers.

There are no torsion outliers.

There are no ring outliers.

1 monomer is involved in 6 short contacts:

Mol	Chain	Res	Type	Clashes	Symm-Clashes
2	A	401	CJC	6	0

## 5.7 Other polymers [i](#)

There are no such residues in this entry.

## 5.8 Polymer linkage issues [i](#)

There are no chain breaks in this entry.

## 6 Fit of model and data

### 6.1 Protein, DNA and RNA chains

In the following table, the column labelled ‘#RSRZ> 2’ contains the number (and percentage) of RSRZ outliers, followed by percent RSRZ outliers for the chain as percentile scores relative to all X-ray entries and entries of similar resolution. The OWAB column contains the minimum, median, 95<sup>th</sup> percentile and maximum values of the occupancy-weighted average B-factor per residue. The column labelled ‘Q< 0.9’ lists the number of (and percentage) of residues with an average occupancy less than 0.9.

Mol	Chain	Analysed	<RSRZ>	#RSRZ>2	OWAB(Å <sup>2</sup> )	Q<0.9
1	A	361/390 (92%)	0.10	13 (3%) 46 50	19, 28, 49, 80	0
1	B	226/390 (57%)	0.71	31 (13%) 4 4	25, 42, 72, 90	0
All	All	587/780 (75%)	0.34	44 (7%) 17 19	19, 33, 66, 90	0

All (44) RSRZ outliers are listed below:

Mol	Chain	Res	Type	RSRZ
1	B	233	ALA	9.0
1	B	224	HIS	8.8
1	B	231	LEU	7.0
1	B	230	THR	6.8
1	B	220	GLY	6.3
1	B	226	LEU	5.2
1	B	225	LYS	5.1
1	B	263	LYS	4.9
1	B	113	VAL	4.6
1	B	99	PHE	4.2
1	B	227	GLU	4.2
1	A	227	GLU	4.1
1	B	262	ILE	4.0
1	B	79	PRO	4.0
1	A	304	ILE	4.0
1	B	228	ALA	3.6
1	B	265	SER	3.6
1	B	24	MET	3.5
1	B	222	LEU	3.3
1	B	229	GLU	3.3
1	B	94	HIS	3.2
1	A	38	ILE	3.1
1	A	258	PRO	3.1
1	A	260	GLU	3.1

*Continued on next page...*

*Continued from previous page...*

Mol	Chain	Res	Type	RSRZ
1	A	305	LYS	2.8
1	B	272	THR	2.7
1	A	303	ASN	2.6
1	B	223	ASP	2.6
1	B	218	LEU	2.5
1	A	36[A]	GLN	2.5
1	B	216	THR	2.4
1	A	376	GLN	2.4
1	B	96	GLY	2.3
1	A	64	ILE	2.3
1	A	375	ALA	2.3
1	B	221	TYR	2.2
1	B	82	LYS	2.2
1	A	307	THR	2.2
1	B	98	LYS	2.2
1	B	148	ASP	2.1
1	B	273	PRO	2.1
1	B	100	SER	2.1
1	A	34	LEU	2.1
1	B	232	PRO	2.0

## 6.2 Non-standard residues in protein, DNA, RNA chains [i](#)

There are no non-standard protein/DNA/RNA residues in this entry.

## 6.3 Carbohydrates [i](#)

There are no carbohydrates in this entry.

## 6.4 Ligands [i](#)

In the following table, the Atoms column lists the number of modelled atoms in the group and the number defined in the chemical component dictionary. LLDF column lists the quality of electron density of the group with respect to its neighbouring residues in protein, DNA or RNA chains. The B-factors column lists the minimum, median, 95<sup>th</sup> percentile and maximum values of B factors of atoms in the group. The column labelled 'Q< 0.9' lists the number of atoms with occupancy less than 0.9.

Mol	Type	Chain	Res	Atoms	RSCC	RSR	LLDF	B-factors(Å <sup>2</sup> )	Q<0.9
2	CJC	A	401	30/30	0.86	0.13	-0.18	22,36,62,69	0



## 6.5 Other polymers [i](#)

There are no such residues in this entry.