



# Full wwPDB X-ray Structure Validation Report ⓘ

Jan 31, 2016 – 07:56 PM GMT

PDB ID : 1I00  
Title : CRYSTAL STRUCTURE OF HUMAN THYMIDYLATE SYNTHASE,  
TERNARY COMPLEX WITH DUMP AND TOMUDEX  
Authors : Almog, R.A.; Waddling, C.A.; Maley, F.; Maley, G.F.; Van Roey, P.  
Deposited on : 2001-01-27  
Resolution : 2.50 Å(reported)

This is a Full wwPDB X-ray Structure Validation Report for a publicly released PDB entry.  
We welcome your comments at [validation@mail.wwpdb.org](mailto:validation@mail.wwpdb.org)  
A user guide is available at  
<http://wwpdb.org/validation/2016/XrayValidationReportHelp>  
with specific help available everywhere you see the ⓘ symbol.

---

The following versions of software and data (see [references ⓘ](#)) were used in the production of this report:

MolProbity : 4.02b-467  
Mogul : 1.7 (RC4), CSD as536be (2015)  
Xtriage (Phenix) : 1.9-1692  
EDS : rb-20026688  
Percentile statistics : 20151230.v01 (using entries in the PDB archive December 30th 2015)  
Refmac : 5.8.0135  
CCP4 : 6.5.0  
Ideal geometry (proteins) : Engh & Huber (2001)  
Ideal geometry (DNA, RNA) : Parkinson et al. (1996)  
Validation Pipeline (wwPDB-VP) : trunk26865

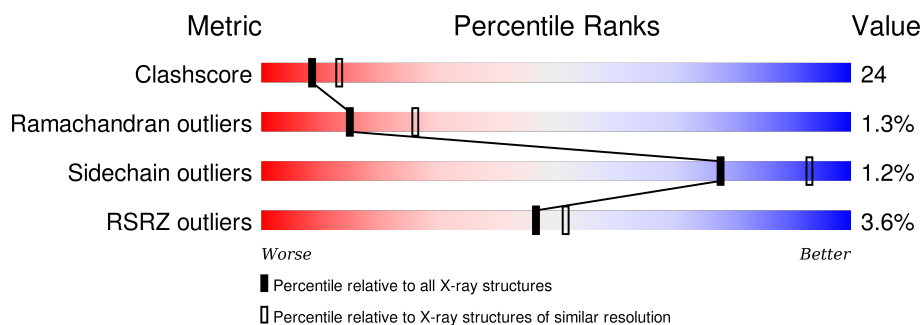
# 1 Overall quality at a glance

The following experimental techniques were used to determine the structure:

*X-RAY DIFFRACTION*

The reported resolution of this entry is 2.50 Å.

Percentile scores (ranging between 0-100) for global validation metrics of the entry are shown in the following graphic. The table shows the number of entries on which the scores are based.



Metric	Whole archive (#Entries)	Similar resolution (#Entries, resolution range(Å))
Clashscore	102246	4242 (2.50-2.50)
Ramachandran outliers	100387	4156 (2.50-2.50)
Sidechain outliers	100360	4158 (2.50-2.50)
RSRZ outliers	91569	3562 (2.50-2.50)

The table below summarises the geometric issues observed across the polymeric chains and their fit to the electron density. The red, orange, yellow and green segments on the lower bar indicate the fraction of residues that contain outliers for  $\geq 3$ , 2, 1 and 0 types of geometric quality criteria. A grey segment represents the fraction of residues that are not modelled. The numeric value for each fraction is indicated below the corresponding segment, with a dot representing fractions  $\leq 5\%$ . The upper red bar (where present) indicates the fraction of residues that have poor fit to the electron density. The numeric value is given above the bar.

Mol	Chain	Length	Quality of chain
1	A	290	
1	B	290	

## 2 Entry composition

There are 4 unique types of molecules in this entry. The entry contains 4734 atoms, of which 0 are hydrogens and 0 are deuteriums.

In the tables below, the ZeroOcc column contains the number of atoms modelled with zero occupancy, the AltConf column contains the number of residues with at least one atom in alternate conformation and the Trace column contains the number of residues modelled with at most 2 atoms.

- Molecule 1 is a protein called THYMIDYLATE SYNTHASE.

Mol	Chain	Residues	Atoms					ZeroOcc	AltConf	Trace
1	A	278	Total	C	N	O	S	0	1	0
			2260	1446	394	409	11			
1	B	278	Total	C	N	O	S	0	1	0
			2260	1446	394	409	11			

There are 46 discrepancies between the modelled and reference sequences:

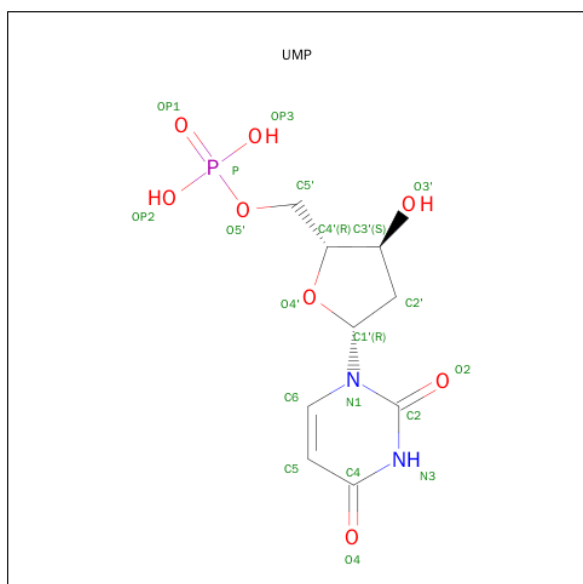
Chain	Residue	Modelled	Actual	Comment	Reference
A	?	-	GLU	DELETION	UNP P04818
A	?	-	LEU	DELETION	UNP P04818
A	?	-	PRO	DELETION	UNP P04818
A	?	-	ARG	DELETION	UNP P04818
A	?	-	ARG	DELETION	UNP P04818
A	?	-	PRO	DELETION	UNP P04818
A	?	-	LEU	DELETION	UNP P04818
A	?	-	PRO	DELETION	UNP P04818
A	?	-	PRO	DELETION	UNP P04818
A	?	-	ALA	DELETION	UNP P04818
A	?	-	ALA	DELETION	UNP P04818
A	?	-	GLN	DELETION	UNP P04818
A	?	-	GLU	DELETION	UNP P04818
A	?	-	ARG	DELETION	UNP P04818
A	?	-	ASP	DELETION	UNP P04818
A	?	-	ALA	DELETION	UNP P04818
A	?	-	GLU	DELETION	UNP P04818
A	?	-	PRO	DELETION	UNP P04818
A	?	-	ARG	DELETION	UNP P04818
A	?	-	PRO	DELETION	UNP P04818
A	?	-	PRO	DELETION	UNP P04818
A	?	-	HIS	DELETION	UNP P04818
A	?	-	GLY	DELETION	UNP P04818
B	?	-	GLU	DELETION	UNP P04818
B	?	-	LEU	DELETION	UNP P04818

*Continued on next page...*

Continued from previous page...

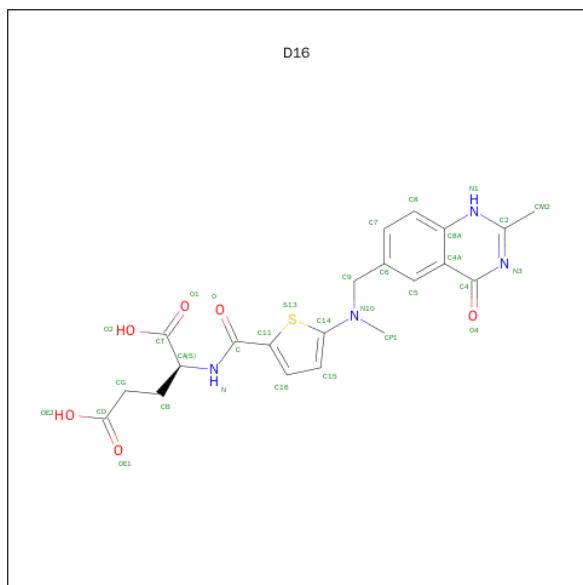
Chain	Residue	Modelled	Actual	Comment	Reference
B	?	-	PRO	DELETION	UNP P04818
B	?	-	ARG	DELETION	UNP P04818
B	?	-	ARG	DELETION	UNP P04818
B	?	-	PRO	DELETION	UNP P04818
B	?	-	LEU	DELETION	UNP P04818
B	?	-	PRO	DELETION	UNP P04818
B	?	-	PRO	DELETION	UNP P04818
B	?	-	ALA	DELETION	UNP P04818
B	?	-	ALA	DELETION	UNP P04818
B	?	-	GLN	DELETION	UNP P04818
B	?	-	GLU	DELETION	UNP P04818
B	?	-	ARG	DELETION	UNP P04818
B	?	-	ASP	DELETION	UNP P04818
B	?	-	ALA	DELETION	UNP P04818
B	?	-	GLU	DELETION	UNP P04818
B	?	-	PRO	DELETION	UNP P04818
B	?	-	ARG	DELETION	UNP P04818
B	?	-	PRO	DELETION	UNP P04818
B	?	-	PRO	DELETION	UNP P04818
B	?	-	HIS	DELETION	UNP P04818
B	?	-	GLY	DELETION	UNP P04818

- Molecule 2 is 2'-DEOXYURIDINE 5'-MONOPHOSPHATE (three-letter code: UMP) (formula:  $C_9H_{13}N_2O_8P$ ).



Mol	Chain	Residues	Atoms					ZeroOcc	AltConf
2	A	1	Total	C	N	O	P	0	0
			20	9	2	8	1		
2	B	1	Total	C	N	O	P	0	0
			20	9	2	8	1		

- Molecule 3 is TOMUDEX (three-letter code: D16) (formula:  $C_{21}H_{22}N_4O_6S$ ).



Mol	Chain	Residues	Atoms					ZeroOcc	AltConf
3	A	1	Total	C	N	O	S	0	0
			32	21	4	6	1		
3	B	1	Total	C	N	O	S	0	0
			32	21	4	6	1		

- Molecule 4 is water.

Mol	Chain	Residues	Atoms		ZeroOcc	AltConf
4	A	69	Total	O	0	0
			69	69		
4	B	41	Total	O	0	0
			41	41		



## 4 Data and refinement statistics

Property	Value	Source
Space group	P 31 2 1	Depositor
Cell constants a, b, c, $\alpha$ , $\beta$ , $\gamma$	89.69Å 89.69Å 142.13Å 90.00° 90.00° 120.00°	Depositor
Resolution (Å)	30.00 – 2.50 26.69 – 2.40	Depositor EDS
% Data completeness (in resolution range)	(Not available) (30.00-2.50) 96.3 (26.69-2.40)	Depositor EDS
$R_{merge}$	0.08	Depositor
$R_{sym}$	(Not available)	Depositor
$\langle I/\sigma(I) \rangle$ <sup>1</sup>	1.91 (at 2.39Å)	Xtriage
Refinement program	CNS 0.9	Depositor
R, $R_{free}$	0.207 , 0.262 0.220 , (Not available)	Depositor DCC
$R_{free}$ test set	No test flags present.	DCC
Wilson B-factor (Å <sup>2</sup> )	45.4	Xtriage
Anisotropy	0.172	Xtriage
Bulk solvent $k_{sol}$ (e/Å <sup>3</sup> ), $B_{sol}$ (Å <sup>2</sup> )	0.34 , 35.4	EDS
Estimated twinning fraction	0.025 for -h,-k,l	Xtriage
L-test for twinning <sup>2</sup>	$\langle  L  \rangle = 0.50$ , $\langle L^2 \rangle = 0.33$	Xtriage
Outliers	0 of 25564 reflections	Xtriage
$F_o, F_c$ correlation	0.94	EDS
Total number of atoms	4734	wwPDB-VP
Average B, all atoms (Å <sup>2</sup> )	46.0	wwPDB-VP

Xtriage's analysis on translational NCS is as follows: *The largest off-origin peak in the Patterson function is 3.84% of the height of the origin peak. No significant pseudotranslation is detected.*

<sup>1</sup>Intensities estimated from amplitudes.

<sup>2</sup>Theoretical values of  $\langle |L| \rangle$ ,  $\langle L^2 \rangle$  for acentric reflections are 0.5, 0.375 respectively for untwinned datasets, and 0.333, 0.2 for perfectly twinned datasets.

## 5 Model quality

### 5.1 Standard geometry

Bond lengths and bond angles in the following residue types are not validated in this section: D16, UMP

The Z score for a bond length (or angle) is the number of standard deviations the observed value is removed from the expected value. A bond length (or angle) with  $|Z| > 5$  is considered an outlier worth inspection. RMSZ is the root-mean-square of all Z scores of the bond lengths (or angles).

Mol	Chain	Bond lengths		Bond angles	
		RMSZ	$\# Z  > 5$	RMSZ	$\# Z  > 5$
1	A	0.40	0/2321	0.64	0/3141
1	B	0.37	0/2321	0.62	0/3141
All	All	0.39	0/4642	0.63	0/6282

There are no bond length outliers.

There are no bond angle outliers.

There are no chirality outliers.

There are no planarity outliers.

### 5.2 Too-close contacts

In the following table, the Non-H and H(model) columns list the number of non-hydrogen atoms and hydrogen atoms in the chain respectively. The H(added) column lists the number of hydrogen atoms added and optimized by MolProbity. The Clashes column lists the number of clashes within the asymmetric unit, whereas Symm-Clashes lists symmetry related clashes.

Mol	Chain	Non-H	H(model)	H(added)	Clashes	Symm-Clashes
1	A	2260	0	2225	116	0
1	B	2260	0	2225	119	0
2	A	20	0	11	0	0
2	B	20	0	11	1	0
3	A	32	0	20	2	0
3	B	32	0	20	1	0
4	A	69	0	0	7	0
4	B	41	0	0	3	0
All	All	4734	0	4512	217	0

The all-atom clashscore is defined as the number of clashes found per 1000 atoms (including hydrogen atoms). The all-atom clashscore for this structure is 24.



All (217) close contacts within the same asymmetric unit are listed below, sorted by their clash magnitude.

Atom-1	Atom-2	Interatomic distance (Å)	Clash overlap (Å)
1:B:140:ARG:HE	1:B:161:LEU:HD23	1.20	1.02
1:B:160:GLN:HE22	1:B:180:CYS:H	1.04	0.97
1:B:160:GLN:NE2	1:B:180:CYS:H	1.64	0.94
1:B:115:ARG:HG3	1:B:115:ARG:HH11	1.43	0.83
1:A:192:LEU:HD12	1:A:193:PRO:HD2	1.62	0.82
1:B:140:ARG:NE	1:B:161:LEU:HD23	1.99	0.77
1:A:239:HIS:HE1	1:A:284:LYS:HA	1.50	0.75
1:A:41:LEU:HD22	1:A:262:ILE:HG23	1.65	0.75
1:A:147:ARG:HB2	1:A:151:SER:OG	1.87	0.75
1:B:30:GLU:HG3	1:B:74:LEU:HD22	1.69	0.74
1:A:163:ARG:HH11	1:A:163:ARG:HB2	1.53	0.73
1:B:160:GLN:HE22	1:B:180:CYS:N	1.85	0.71
1:B:274:ARG:HG2	1:B:274:ARG:HH11	1.56	0.71
1:A:192:LEU:HD12	1:A:193:PRO:CD	2.23	0.69
1:B:214:GLN:HB3	1:B:252:LEU:HD23	1.74	0.69
1:A:196:HIS:CD2	4:A:560:HOH:O	2.45	0.68
1:A:278:LYS:HD2	1:A:280:ARG:NH2	2.09	0.68
1:A:267:ILE:O	1:A:270:GLN:HG2	1.92	0.68
1:A:176:ARG:HH12	1:B:193:PRO:HD2	1.59	0.67
1:B:140:ARG:HE	1:B:161:LEU:CD2	2.03	0.67
1:B:223:VAL:HB	1:B:224:PRO:HD3	1.77	0.67
1:B:115:ARG:NH1	1:B:115:ARG:HG3	2.11	0.66
1:A:107:LYS:HB3	1:A:110:ASP:OD2	1.95	0.66
1:B:271:ARG:HH11	1:B:271:ARG:HG3	1.59	0.65
1:A:257:ILE:HG23	1:A:265:LEU:HD12	1.79	0.65
1:A:294:GLU:CD	1:A:294:GLU:H	2.00	0.65
1:A:173:ASP:HB3	1:B:48:ASP:O	1.97	0.64
1:A:142:PHE:CE1	1:B:184:PRO:HD2	2.32	0.64
1:A:41:LEU:HD23	1:A:56:LEU:HD12	1.79	0.64
1:A:56:LEU:HD11	1:A:262:ILE:HD13	1.80	0.64
1:A:283:ARG:HD3	1:A:295:ASP:OD1	1.98	0.64
1:A:267:ILE:HA	1:A:270:GLN:HE21	1.62	0.63
1:B:240:ILE:HD11	1:B:288:ILE:HA	1.81	0.62
1:B:263:GLU:HB2	1:B:264:PRO:HD3	1.80	0.62
1:B:198:LEU:C	1:B:198:LEU:HD12	2.20	0.62
1:B:239:HIS:HE1	1:B:285:VAL:H	1.48	0.62
1:A:214:GLN:OE1	1:A:250:HIS:HE1	1.83	0.62
1:B:102:SER:HB2	1:B:110:ASP:OD1	2.01	0.61
1:B:262:ILE:O	1:B:266:LYS:HG3	2.01	0.61
1:B:261:HIS:C	1:B:264:PRO:HD2	2.21	0.61

*Continued on next page...*

*Continued from previous page...*

Atom-1	Atom-2	Interatomic distance (Å)	Clash overlap (Å)
1:A:160:GLN:HE22	1:A:180:CYS:H	1.49	0.60
1:A:140:ARG:NH2	1:A:289:ASP:OD1	2.33	0.60
1:B:126:ARG:HG2	1:B:130:ASP:HB3	1.84	0.60
1:B:88:LEU:HD23	1:B:232:LEU:HG	1.83	0.60
1:B:40:ILE:CD1	1:B:219:MET:HG3	2.32	0.60
1:A:250:HIS:HD2	4:A:548:HOH:O	1.83	0.60
1:B:190:MET:SD	1:B:194:PRO:HD3	2.41	0.60
1:A:160:GLN:NE2	1:A:180:CYS:H	1.99	0.60
1:A:264:PRO:O	1:A:267:ILE:HB	2.01	0.60
1:A:221:LEU:O	1:A:224:PRO:HD2	2.02	0.60
1:A:185:ARG:HD2	1:B:143:GLY:HA3	1.84	0.59
1:B:274:ARG:HD2	1:B:302:ASN:HB3	1.85	0.59
1:B:50:ARG:NH1	1:B:50:ARG:HB2	2.18	0.59
1:B:87:GLU:O	1:B:90:TRP:HB3	2.03	0.58
1:A:51:THR:OG1	1:A:52:GLY:N	2.33	0.58
1:B:271:ARG:HG3	1:B:271:ARG:NH1	2.18	0.58
1:B:115:ARG:NH1	1:B:119:ASP:OD2	2.26	0.57
1:B:183:ASN:HB3	1:B:186:ASP:HB2	1.87	0.57
1:B:163:ARG:HH11	1:B:163:ARG:HG2	1.70	0.56
1:A:285:VAL:HG13	1:A:290:ASP:HB2	1.87	0.56
1:A:86:GLU:HB2	1:A:106:VAL:HG21	1.87	0.56
1:B:212:LEU:HD22	1:B:230:TYR:CD2	2.40	0.56
1:B:187:LEU:HB2	1:B:188:PRO:HD3	1.87	0.56
1:B:232:LEU:HG	1:B:236:MET:HE3	1.88	0.56
1:B:161:LEU:O	1:B:164:VAL:HG22	2.06	0.55
1:A:239:HIS:CE1	1:A:284:LYS:HD2	2.42	0.55
1:B:262:ILE:HG22	1:B:266:LYS:HE3	1.87	0.54
1:A:249:ILE:HG12	1:B:60:GLY:HA3	1.89	0.54
1:B:274:ARG:HG2	1:B:274:ARG:NH1	2.21	0.54
1:B:93:LYS:HG3	4:B:565:HOH:O	2.08	0.54
1:A:212:LEU:HD22	1:A:230:TYR:CD2	2.43	0.54
1:A:41:LEU:O	1:A:42:ARG:HG3	2.08	0.53
1:B:274:ARG:HD2	1:B:302:ASN:O	2.08	0.53
1:A:45:VAL:CG2	1:B:204:VAL:HG21	2.37	0.53
1:B:40:ILE:HD12	1:B:219:MET:HG3	1.89	0.53
1:A:117:PHE:CE2	1:A:121:LEU:HD11	2.43	0.53
1:A:259:LEU:HD23	1:A:262:ILE:HD11	1.90	0.53
1:B:82:LYS:HE2	1:B:104:LYS:O	2.09	0.53
1:B:285:VAL:HG13	1:B:290:ASP:HB2	1.90	0.53
1:B:85:LEU:HD12	1:B:232:LEU:HD21	1.91	0.53
1:A:34:LEU:HD21	1:A:76:THR:HG21	1.90	0.53

*Continued on next page...*

*Continued from previous page...*

Atom-1	Atom-2	Interatomic distance (Å)	Clash overlap (Å)
1:A:190:MET:C	1:A:192:LEU:H	2.11	0.53
1:B:239:HIS:CE1	1:B:285:VAL:H	2.27	0.52
1:A:62:GLN:HA	1:A:250:HIS:O	2.08	0.52
1:A:223:VAL:HB	1:A:224:PRO:HD3	1.91	0.52
1:A:236:MET:HE3	1:A:291:PHE:CD2	2.44	0.52
1:A:32:GLN:O	1:A:36:GLN:HG3	2.10	0.52
1:B:257:ILE:HG23	1:B:265:LEU:HD12	1.92	0.51
1:A:196:HIS:CE1	1:A:226:ASN:ND2	2.79	0.51
1:A:249:ILE:HD12	1:A:249:ILE:N	2.25	0.51
1:B:50:ARG:HB2	1:B:50:ARG:CZ	2.40	0.51
1:B:183:ASN:O	1:B:187:LEU:HG	2.10	0.51
1:A:130:ASP:OD2	1:A:149:MET:HG2	2.11	0.51
1:A:282:LEU:HD12	1:A:294:GLU:O	2.11	0.51
1:B:34:LEU:HD22	1:B:269:LEU:HD23	1.92	0.51
1:A:218:ASP:OD2	3:A:315:D16:N3	2.44	0.50
1:B:259:LEU:HD23	1:B:262:ILE:HD11	1.92	0.50
1:A:68:ARG:HG3	1:A:68:ARG:HH11	1.76	0.50
1:A:263:GLU:HB2	1:A:264:PRO:HD3	1.92	0.50
1:A:109[B]:TRP:CH2	3:A:315:D16:H91	2.47	0.50
1:A:190:MET:SD	1:A:194:PRO:HD3	2.52	0.50
1:B:62:GLN:HA	1:B:250:HIS:O	2.12	0.50
1:A:153:TYR:O	1:A:156:GLN:HB2	2.11	0.50
1:B:206:SER:HA	1:B:243:LEU:HD22	1.94	0.49
1:B:109[A]:TRP:CE3	1:B:109[A]:TRP:HA	2.47	0.49
1:B:75:THR:HG21	1:B:274:ARG:O	2.13	0.49
1:A:77:LYS:HE3	1:A:78:ARG:O	2.12	0.49
1:B:34:LEU:HD11	1:B:76:THR:HG21	1.95	0.49
1:A:115:ARG:HH11	1:A:115:ARG:HG3	1.76	0.49
1:A:193:PRO:HG2	1:B:176:ARG:NE	2.27	0.49
1:A:61:MET:CA	1:B:62:GLN:HE22	2.26	0.49
1:A:196:HIS:NE2	1:A:226:ASN:ND2	2.60	0.49
1:A:41:LEU:CD2	1:A:56:LEU:HD12	2.42	0.48
1:A:239:HIS:CE1	1:A:284:LYS:HA	2.39	0.48
1:A:285:VAL:HG21	1:A:291:PHE:CD1	2.48	0.48
1:A:259:LEU:O	1:A:262:ILE:HG13	2.13	0.48
1:B:214:GLN:OE1	1:B:250:HIS:HE1	1.96	0.48
1:B:261:HIS:O	1:B:264:PRO:HD2	2.14	0.48
4:A:557:HOH:O	1:B:49:ASP:HA	2.14	0.48
1:A:200:GLN:NE2	1:B:213:TYR:OH	2.45	0.48
1:A:257:ILE:CG2	1:A:265:LEU:HD12	2.43	0.47
1:A:214:GLN:OE1	1:A:250:HIS:CE1	2.65	0.47

*Continued on next page...*

*Continued from previous page...*

Atom-1	Atom-2	Interatomic distance (Å)	Clash overlap (Å)
1:B:108:ILE:HG13	1:B:109[B]:TRP:CD1	2.49	0.47
1:A:115:ARG:NH2	1:A:126:ARG:O	2.48	0.47
1:A:214:GLN:HB3	1:A:252:LEU:HD23	1.96	0.47
1:B:192:LEU:HD12	1:B:193:PRO:HD2	1.97	0.47
1:A:196:HIS:CE1	1:A:226:ASN:CG	2.87	0.47
1:B:265:LEU:O	1:B:269:LEU:HG	2.14	0.47
1:A:182:TRP:HB2	1:A:197:ALA:HB1	1.97	0.47
1:B:50:ARG:NH1	1:B:50:ARG:CB	2.78	0.47
1:B:86:GLU:HB2	1:B:106:VAL:HG21	1.96	0.47
1:A:280:ARG:HB2	1:A:297:GLN:HB3	1.97	0.46
1:B:85:LEU:CD1	1:B:232:LEU:HD21	2.44	0.46
1:B:109[B]:TRP:CE3	1:B:131:LEU:HD13	2.50	0.46
1:B:182:TRP:O	1:B:184:PRO:HD3	2.14	0.46
1:B:153:TYR:O	1:B:156:GLN:HB2	2.15	0.46
1:A:193:PRO:HG2	1:B:176:ARG:CZ	2.45	0.46
1:A:151:SER:HB2	1:A:153:TYR:CZ	2.50	0.46
1:A:176:ARG:NH1	1:B:193:PRO:HD2	2.30	0.46
1:B:201:PHE:CE1	1:B:210:CYS:HB2	2.50	0.46
1:A:160:GLN:O	1:A:164:VAL:HG13	2.16	0.46
1:A:82:LYS:HE2	1:A:104:LYS:O	2.15	0.46
1:B:36:GLN:O	1:B:40:ILE:HG13	2.14	0.46
1:A:68:ARG:NH1	1:A:68:ARG:HG3	2.31	0.46
1:A:42:ARG:HH11	1:A:42:ARG:HG3	1.80	0.45
1:B:277:PRO:HB3	1:B:301:TYR:HA	1.98	0.45
1:B:74:LEU:HD12	1:B:224:PRO:HB3	1.98	0.45
1:A:176:ARG:NH1	2:B:408:UMP:OP1	2.49	0.45
1:A:49:ASP:HB2	1:B:175:ARG:NH2	2.31	0.45
1:A:201:PHE:CE1	1:A:210:CYS:HB2	2.51	0.45
1:B:257:ILE:CG2	1:B:265:LEU:HD12	2.47	0.45
1:A:207:GLU:HA	1:A:244:LYS:O	2.17	0.45
1:A:37:ILE:HD13	1:A:265:LEU:HD22	1.99	0.44
1:A:45:VAL:HG21	1:B:204:VAL:HG21	1.97	0.44
1:B:84:VAL:HG13	1:B:229:SER:HA	1.99	0.44
1:A:140:ARG:NH1	1:A:159:ASP:OD2	2.49	0.44
1:A:93:LYS:HG3	4:A:509:HOH:O	2.16	0.44
1:B:115:ARG:HH12	1:B:119:ASP:CG	2.18	0.44
1:B:147:ARG:HB2	1:B:151:SER:OG	2.17	0.44
1:B:221:LEU:O	1:B:224:PRO:HD2	2.17	0.44
1:B:239:HIS:HE1	1:B:285:VAL:N	2.14	0.44
1:A:177:ILE:CG2	1:A:201:PHE:HB2	2.48	0.44
1:B:97:ASN:O	1:B:100:GLU:HB3	2.18	0.44

*Continued on next page...*

*Continued from previous page...*

Atom-1	Atom-2	Interatomic distance (Å)	Clash overlap (Å)
1:A:87:GLU:O	1:A:90:TRP:HB3	2.17	0.44
1:A:161:LEU:HD21	1:A:288:ILE:HG12	1.98	0.44
1:A:191:ALA:O	1:A:192:LEU:CB	2.65	0.43
1:A:41:LEU:CD2	1:A:262:ILE:HG23	2.43	0.43
1:B:30:GLU:OE2	1:B:76:THR:HG23	2.18	0.43
1:A:61:MET:HA	1:B:62:GLN:HE22	1.82	0.43
1:A:182:TRP:CZ2	1:A:187:LEU:HD21	2.53	0.43
1:B:240:ILE:CD1	1:B:288:ILE:HA	2.46	0.43
1:A:185:ARG:O	1:A:188:PRO:HD2	2.18	0.43
1:A:176:ARG:CZ	1:B:193:PRO:HG2	2.48	0.43
1:B:140:ARG:NH1	1:B:159:ASP:OD2	2.51	0.43
1:A:187:LEU:N	1:A:188:PRO:HD2	2.32	0.43
1:A:258:TYR:HB2	1:A:261:HIS:HD2	1.83	0.43
1:B:112:ASN:HA	1:B:117:PHE:CD2	2.53	0.43
1:A:30:GLU:HG3	1:A:74:LEU:HD22	2.01	0.43
1:B:277:PRO:HB3	1:B:301:TYR:CA	2.49	0.42
1:A:264:PRO:HA	1:A:267:ILE:HD12	2.02	0.42
1:A:294:GLU:CD	1:A:294:GLU:N	2.69	0.42
1:B:232:LEU:CG	1:B:236:MET:HE3	2.49	0.42
1:A:132:GLY:HA2	1:A:146:TYR:CE2	2.54	0.42
1:A:304:HIS:HA	1:A:305:PRO:HD3	1.90	0.42
1:A:265:LEU:HD23	1:A:265:LEU:HA	1.89	0.42
1:A:132:GLY:O	1:A:134:VAL:N	2.50	0.42
1:A:175:ARG:NH1	1:B:256:HIS:CE1	2.86	0.42
1:A:109[A]:TRP:CE3	1:A:131:LEU:HD13	2.54	0.42
1:B:160:GLN:O	1:B:164:VAL:HG13	2.19	0.42
1:A:185:ARG:CD	1:B:143:GLY:HA3	2.47	0.42
1:B:107:LYS:HB3	1:B:110:ASP:OD2	2.20	0.42
1:B:249:ILE:N	1:B:249:ILE:HD12	2.35	0.42
1:A:78:ARG:HD3	4:A:517:HOH:O	2.20	0.42
1:B:225:PHE:CG	3:B:409:D16:H15	2.55	0.42
1:B:119:ASP:OD2	1:B:124:SER:HA	2.21	0.41
1:B:301:TYR:O	1:B:303:PRO:CD	2.68	0.41
1:B:184:PRO:HA	1:B:187:LEU:HD12	2.02	0.41
1:A:175:ARG:HD2	1:B:216:SER:OG	2.20	0.41
1:B:198:LEU:CD1	1:B:198:LEU:C	2.88	0.41
1:B:215:ARG:HG3	1:B:216:SER:N	2.35	0.41
1:A:259:LEU:HA	1:A:262:ILE:HG13	2.03	0.41
1:B:217:GLY:HA3	1:B:252:LEU:HD22	2.02	0.41
1:B:219:MET:SD	1:B:223:VAL:HG21	2.61	0.41
1:B:37:ILE:CD1	1:B:219:MET:HB3	2.51	0.41

*Continued on next page...*

Continued from previous page...

Atom-1	Atom-2	Interatomic distance (Å)	Clash overlap (Å)
1:A:176:ARG:HD3	1:A:176:ARG:N	2.35	0.41
1:A:90:TRP:CD1	1:A:95:SER:HB3	2.56	0.41
1:B:138:GLN:O	1:B:142:PHE:HB2	2.20	0.41
1:A:6:SER:N	4:A:576:HOH:O	2.54	0.40
1:A:196:HIS:HD2	4:A:560:HOH:O	1.93	0.40
1:B:232:LEU:O	1:B:236:MET:HG3	2.22	0.40
1:A:127:GLU:OE2	1:A:127:GLU:HA	2.21	0.40
1:B:259:LEU:CD2	1:B:262:ILE:HD11	2.51	0.40
1:B:250:HIS:HD2	4:B:541:HOH:O	2.04	0.40
1:B:194:PRO:HG3	4:B:559:HOH:O	2.20	0.40
1:A:215:ARG:HG3	1:A:216:SER:N	2.36	0.40
1:B:50:ARG:CB	1:B:50:ARG:HH11	2.34	0.40
1:A:171:ASN:ND2	1:A:174:ASP:HB2	2.36	0.40

There are no symmetry-related clashes.

## 5.3 Torsion angles [i](#)

### 5.3.1 Protein backbone [i](#)

In the following table, the Percentiles column shows the percent Ramachandran outliers of the chain as a percentile score with respect to all X-ray entries followed by that with respect to entries of similar resolution.

The Analysed column shows the number of residues for which the backbone conformation was analysed, and the total number of residues.

Mol	Chain	Analysed	Favoured	Allowed	Outliers	Percentiles	
1	A	277/290 (96%)	247 (89%)	24 (9%)	6 (2%)	8	13
1	B	277/290 (96%)	256 (92%)	20 (7%)	1 (0%)	39	61
All	All	554/580 (96%)	503 (91%)	44 (8%)	7 (1%)	15	26

All (7) Ramachandran outliers are listed below:

Mol	Chain	Res	Type
1	A	51	THR
1	A	192	LEU
1	A	43	CYS
1	A	135	TYR
1	A	52	GLY

Continued on next page...

*Continued from previous page...*

Mol	Chain	Res	Type
1	B	302	ASN
1	A	305	PRO

### 5.3.2 Protein sidechains ⓘ

In the following table, the Percentiles column shows the percent sidechain outliers of the chain as a percentile score with respect to all X-ray entries followed by that with respect to entries of similar resolution.

The Analysed column shows the number of residues for which the sidechain conformation was analysed, and the total number of residues.

Mol	Chain	Analysed	Rotameric	Outliers	Percentiles	
1	A	244/252 (97%)	241 (99%)	3 (1%)	78	93
1	B	244/252 (97%)	241 (99%)	3 (1%)	78	93
All	All	488/504 (97%)	482 (99%)	6 (1%)	78	93

All (6) residues with a non-rotameric sidechain are listed below:

Mol	Chain	Res	Type
1	A	115	ARG
1	A	163	ARG
1	A	176	ARG
1	B	115	ARG
1	B	140	ARG
1	B	294	GLU

Some sidechains can be flipped to improve hydrogen bonding and reduce clashes. All (23) such sidechains are listed below:

Mol	Chain	Res	Type
1	A	38	GLN
1	A	62	GLN
1	A	160	GLN
1	A	162	GLN
1	A	171	ASN
1	A	196	HIS
1	A	200	GLN
1	A	239	HIS
1	A	250	HIS
1	A	261	HIS

*Continued on next page...*

*Continued from previous page...*

Mol	Chain	Res	Type
1	A	268	GLN
1	A	270	GLN
1	B	39	HIS
1	B	62	GLN
1	B	156	GLN
1	B	160	GLN
1	B	162	GLN
1	B	196	HIS
1	B	200	GLN
1	B	211	GLN
1	B	239	HIS
1	B	250	HIS
1	B	297	GLN

### 5.3.3 RNA [i](#)

There are no RNA molecules in this entry.

## 5.4 Non-standard residues in protein, DNA, RNA chains [i](#)

There are no non-standard protein/DNA/RNA residues in this entry.

## 5.5 Carbohydrates [i](#)

There are no carbohydrates in this entry.

## 5.6 Ligand geometry [i](#)

4 ligands are modelled in this entry.

In the following table, the Counts columns list the number of bonds (or angles) for which Mogul statistics could be retrieved, the number of bonds (or angles) that are observed in the model and the number of bonds (or angles) that are defined in the chemical component dictionary. The Link column lists molecule types, if any, to which the group is linked. The Z score for a bond length (or angle) is the number of standard deviations the observed value is removed from the expected value. A bond length (or angle) with  $|Z| > 2$  is considered an outlier worth inspection. RMSZ is the root-mean-square of all Z scores of the bond lengths (or angles).

Mol	Type	Chain	Res	Link	Bond lengths			Bond angles		
					Counts	RMSZ	$\# Z  > 2$	Counts	RMSZ	$\# Z  > 2$
2	UMP	A	314	-	16,21,21	2.38	5 (31%)	23,31,31	3.03	4 (17%)



Mol	Type	Chain	Res	Link	Bond lengths			Bond angles		
					Counts	RMSZ	# Z  > 2	Counts	RMSZ	# Z  > 2
3	D16	A	315	-	25,34,34	2.32	9 (36%)	22,48,48	2.57	7 (31%)
2	UMP	B	408	-	16,21,21	2.39	5 (31%)	23,31,31	3.06	4 (17%)
3	D16	B	409	-	25,34,34	2.35	10 (40%)	22,48,48	2.41	6 (27%)

In the following table, the Chirals column lists the number of chiral outliers, the number of chiral centers analysed, the number of these observed in the model and the number defined in the chemical component dictionary. Similar counts are reported in the Torsion and Rings columns. '-' means no outliers of that kind were identified.

Mol	Type	Chain	Res	Link	Chirals	Torsions	Rings
2	UMP	A	314	-	-	0/6/22/22	0/2/2/2
3	D16	A	315	-	-	0/13/25/25	0/3/3/3
2	UMP	B	408	-	-	0/6/22/22	0/2/2/2
3	D16	B	409	-	-	0/13/25/25	0/3/3/3

All (29) bond length outliers are listed below:

Mol	Chain	Res	Type	Atoms	Z	Observed(Å)	Ideal(Å)
2	B	408	UMP	C2'-C1'	-3.33	1.43	1.52
2	A	314	UMP	C2'-C1'	-3.24	1.43	1.52
2	B	408	UMP	C2'-C3'	-3.10	1.44	1.52
2	A	314	UMP	C2'-C3'	-2.80	1.45	1.52
2	A	314	UMP	C3'-C4'	-2.69	1.45	1.53
2	B	408	UMP	C3'-C4'	-2.66	1.45	1.53
3	B	409	D16	C7-C6	2.02	1.43	1.38
3	B	409	D16	C-N	2.26	1.39	1.34
3	A	315	D16	C5-C6	2.28	1.42	1.37
3	A	315	D16	C9-C6	2.34	1.55	1.51
3	B	409	D16	C9-C6	2.35	1.55	1.51
3	A	315	D16	C2-N1	2.46	1.38	1.34
3	B	409	D16	C5-C6	2.46	1.43	1.37
3	A	315	D16	C-N	2.68	1.40	1.34
3	A	315	D16	C14-N10	2.90	1.45	1.36
3	B	409	D16	C14-N10	2.92	1.45	1.36
3	B	409	D16	C2-N1	2.95	1.39	1.34
3	A	315	D16	C8-C7	3.24	1.43	1.36
3	B	409	D16	C8-C7	3.31	1.43	1.36
3	A	315	D16	C2-N3	3.97	1.41	1.34
3	B	409	D16	C2-N3	4.06	1.41	1.34
3	B	409	D16	C4-N3	4.84	1.42	1.33
2	A	314	UMP	C6-N1	4.91	1.42	1.35
3	A	315	D16	C4-N3	5.09	1.42	1.33

*Continued on next page...*

*Continued from previous page...*

Mol	Chain	Res	Type	Atoms	Z	Observed(Å)	Ideal(Å)
2	B	408	UMP	C4-N3	5.14	1.42	1.33
2	B	408	UMP	C6-N1	5.35	1.43	1.35
2	A	314	UMP	C4-N3	5.53	1.43	1.33
3	A	315	D16	C9-N10	5.81	1.56	1.47
3	B	409	D16	C9-N10	6.00	1.56	1.47

All (21) bond angle outliers are listed below:

Mol	Chain	Res	Type	Atoms	Z	Observed(°)	Ideal(°)
3	A	315	D16	N1-C2-N3	-3.91	117.90	125.58
3	B	409	D16	N1-C2-N3	-3.82	118.07	125.58
2	B	408	UMP	C5-C4-N3	-3.02	115.38	123.12
2	A	314	UMP	C5-C4-N3	-2.92	115.62	123.12
3	A	315	D16	C7-C8-C8A	-2.87	117.76	120.88
3	B	409	D16	C7-C8-C8A	-2.75	117.89	120.88
2	A	314	UMP	O4'-C4'-C5'	-2.54	100.24	109.32
2	B	408	UMP	O4'-C4'-C5'	-2.12	101.72	109.32
3	A	315	D16	CM2-C2-N3	2.12	120.81	117.20
2	B	408	UMP	O5'-C5'-C4'	2.31	117.65	109.12
3	A	315	D16	CM2-C2-N1	2.40	121.29	117.21
3	B	409	D16	CM2-C2-N1	2.50	121.46	117.21
2	A	314	UMP	O5'-C5'-C4'	2.59	118.65	109.12
3	B	409	D16	C6-C9-N10	4.37	118.58	113.03
3	B	409	D16	C2-N1-C8A	5.51	122.08	115.86
3	B	409	D16	CG-CB-CA	5.56	124.29	112.99
3	A	315	D16	C6-C9-N10	5.60	120.13	113.03
3	A	315	D16	C2-N1-C8A	5.65	122.23	115.86
3	A	315	D16	CG-CB-CA	5.66	124.49	112.99
2	A	314	UMP	C4-N3-C2	13.05	127.07	114.14
2	B	408	UMP	C4-N3-C2	13.32	127.34	114.14

There are no chirality outliers.

There are no torsion outliers.

There are no ring outliers.

3 monomers are involved in 4 short contacts:

Mol	Chain	Res	Type	Clashes	Symm-Clashes
3	A	315	D16	2	0
2	B	408	UMP	1	0
3	B	409	D16	1	0

## 5.7 Other polymers

There are no such residues in this entry.

## 5.8 Polymer linkage issues

There are no chain breaks in this entry.

## 6 Fit of model and data

### 6.1 Protein, DNA and RNA chains

In the following table, the column labelled ‘#RSRZ> 2’ contains the number (and percentage) of RSRZ outliers, followed by percent RSRZ outliers for the chain as percentile scores relative to all X-ray entries and entries of similar resolution. The OWAB column contains the minimum, median, 95<sup>th</sup> percentile and maximum values of the occupancy-weighted average B-factor per residue. The column labelled ‘Q< 0.9’ lists the number of (and percentage) of residues with an average occupancy less than 0.9.

Mol	Chain	Analysed	<RSRZ>	#RSRZ>2	OWAB(Å <sup>2</sup> )	Q<0.9
1	A	278/290 (95%)	-0.06	9 (3%) 51 56	27, 41, 68, 77	0
1	B	278/290 (95%)	-0.06	11 (3%) 42 47	29, 46, 66, 77	0
All	All	556/580 (95%)	-0.06	20 (3%) 46 51	27, 44, 68, 77	0

All (20) RSRZ outliers are listed below:

Mol	Chain	Res	Type	RSRZ
1	B	306	THR	3.4
1	A	306	THR	3.3
1	B	155	GLY	3.3
1	A	51	THR	3.2
1	B	233	LEU	3.1
1	B	42	ARG	2.8
1	A	52	GLY	2.6
1	A	230	TYR	2.6
1	B	230	TYR	2.6
1	A	147	ARG	2.4
1	B	305	PRO	2.4
1	A	263	GLU	2.3
1	A	232	LEU	2.3
1	A	233	LEU	2.3
1	B	150	GLU	2.2
1	B	272	GLU	2.2
1	B	227	ILE	2.1
1	B	125	THR	2.1
1	B	228	ALA	2.1
1	A	109[A]	TRP	2.0

## 6.2 Non-standard residues in protein, DNA, RNA chains [i](#)

There are no non-standard protein/DNA/RNA residues in this entry.

## 6.3 Carbohydrates [i](#)

There are no carbohydrates in this entry.

## 6.4 Ligands [i](#)

In the following table, the Atoms column lists the number of modelled atoms in the group and the number defined in the chemical component dictionary. LLDF column lists the quality of electron density of the group with respect to its neighbouring residues in protein, DNA or RNA chains. The B-factors column lists the minimum, median, 95<sup>th</sup> percentile and maximum values of B factors of atoms in the group. The column labelled 'Q< 0.9' lists the number of atoms with occupancy less than 0.9.

Mol	Type	Chain	Res	Atoms	RSCC	RSR	LLDF	B-factors( $\text{\AA}^2$ )	Q<0.9
3	D16	A	315	32/32	0.79	0.22	1.88	54,59,73,73	0
3	D16	B	409	32/32	0.77	0.23	1.32	70,74,81,81	0
2	UMP	B	408	20/20	0.95	0.13	-0.76	49,58,62,62	0
2	UMP	A	314	20/20	0.96	0.12	-1.13	41,48,50,51	0

## 6.5 Other polymers [i](#)

There are no such residues in this entry.