



Full wwPDB X-ray Structure Validation Report ⓘ

Feb 1, 2016 – 09:19 AM GMT

PDB ID : 3I0A
Title : Crystal structure of Siderocalin (NGAL, Lipocalin 2) K134A mutant complexed with Ferric Enterobactin
Authors : Clifton, M.C.
Deposited on : 2009-06-24
Resolution : 2.60 Å(reported)

This is a Full wwPDB X-ray Structure Validation Report for a publicly released PDB entry.
We welcome your comments at validation@mail.wwpdb.org
A user guide is available at
<http://wwpdb.org/validation/2016/XrayValidationReportHelp>
with specific help available everywhere you see the ⓘ symbol.

The following versions of software and data (see [references ⓘ](#)) were used in the production of this report:

MolProbity : 4.02b-467
Mogul : 1.7 (RC4), CSD as536be (2015)
Xtriage (Phenix) : 1.9-1692
EDS : rb-20026688
Percentile statistics : 20151230.v01 (using entries in the PDB archive December 30th 2015)
Refmac : 5.8.0135
CCP4 : 6.5.0
Ideal geometry (proteins) : Engh & Huber (2001)
Ideal geometry (DNA, RNA) : Parkinson et al. (1996)
Validation Pipeline (wwPDB-VP) : trunk26865

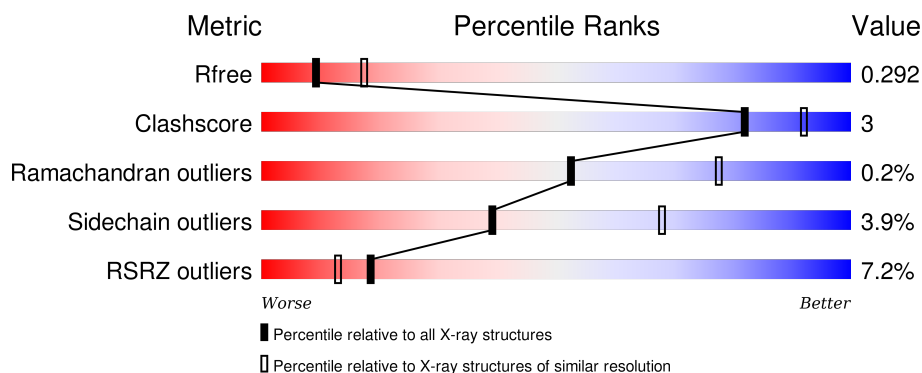
1 Overall quality at a glance

The following experimental techniques were used to determine the structure:

X-RAY DIFFRACTION

The reported resolution of this entry is 2.60 Å.

Percentile scores (ranging between 0-100) for global validation metrics of the entry are shown in the following graphic. The table shows the number of entries on which the scores are based.



Metric	Whole archive (#Entries)	Similar resolution (#Entries, resolution range(Å))
R_{free}	91344	2328 (2.60-2.60)
Clashscore	102246	2679 (2.60-2.60)
Ramachandran outliers	100387	2635 (2.60-2.60)
Sidechain outliers	100360	2635 (2.60-2.60)
RSRZ outliers	91569	2334 (2.60-2.60)

The table below summarises the geometric issues observed across the polymeric chains and their fit to the electron density. The red, orange, yellow and green segments on the lower bar indicate the fraction of residues that contain outliers for ≥ 3 , 2, 1 and 0 types of geometric quality criteria. A grey segment represents the fraction of residues that are not modelled. The numeric value for each fraction is indicated below the corresponding segment, with a dot representing fractions $\leq 5\%$. The upper red bar (where present) indicates the fraction of residues that have poor fit to the electron density. The numeric value is given above the bar.

Mol	Chain	Length	Quality of chain
1	A	198	<div> <div></div> <div> <div></div> <div>81%</div> <div>7%</div> <div>12%</div> </div> </div>
1	B	198	<div> <div>16%</div> <div> <div></div> <div>75%</div> <div>7%</div> <div>•</div> <div>17%</div> </div> </div>
1	C	198	<div> <div>2%</div> <div> <div></div> <div>79%</div> <div>9%</div> <div>•</div> <div>11%</div> </div> </div>

The following table lists non-polymeric compounds, carbohydrate monomers and non-standard residues in protein, DNA, RNA chains that are outliers for geometric or electron-density-fit criteria:

Mol	Type	Chain	Res	Chirality	Geometry	Clashes	Electron density
2	SO4	C	179	-	-	-	X
4	3ET	A	181	-	-	-	X
7	GOL	C	181	-	-	-	X
8	MCJ	C	183[A]	X	-	-	X
8	MCJ	C	183[B]	X	-	-	X

2 Entry composition

There are 9 unique types of molecules in this entry. The entry contains 4165 atoms, of which 0 are hydrogens and 0 are deuteriums.

In the tables below, the ZeroOcc column contains the number of atoms modelled with zero occupancy, the AltConf column contains the number of residues with at least one atom in alternate conformation and the Trace column contains the number of residues modelled with at most 2 atoms.

- Molecule 1 is a protein called Neutrophil gelatinase-associated lipocalin.

Mol	Chain	Residues	Atoms					ZeroOcc	AltConf	Trace
1	A	174	Total	C	N	O	S	0	2	0
			1390	904	229	253	4			
1	B	164	Total	C	N	O	S	0	0	0
			1115	716	191	205	3			
1	C	176	Total	C	N	O	S	0	1	0
			1410	917	229	260	4			

There are 6 discrepancies between the modelled and reference sequences:

Chain	Residue	Modelled	Actual	Comment	Reference
A	87	SER	CYS	ENGINEERED	UNP P80188
A	134	ALA	LYS	ENGINEERED	UNP P80188
B	87	SER	CYS	ENGINEERED	UNP P80188
B	134	ALA	LYS	ENGINEERED	UNP P80188
C	87	SER	CYS	ENGINEERED	UNP P80188
C	134	ALA	LYS	ENGINEERED	UNP P80188

- Molecule 2 is SULFATE ION (three-letter code: SO4) (formula: O₄S).

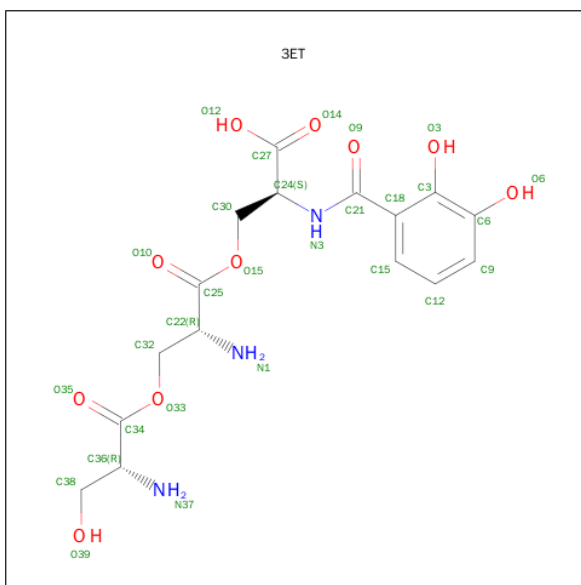


Mol	Chain	Residues	Atoms			ZeroOcc	AltConf
2	A	1	Total	O	S	0	0
			5	4	1		
2	C	1	Total	O	S	0	0
			5	4	1		

- Molecule 3 is FE (III) ION (three-letter code: FE) (formula: Fe).

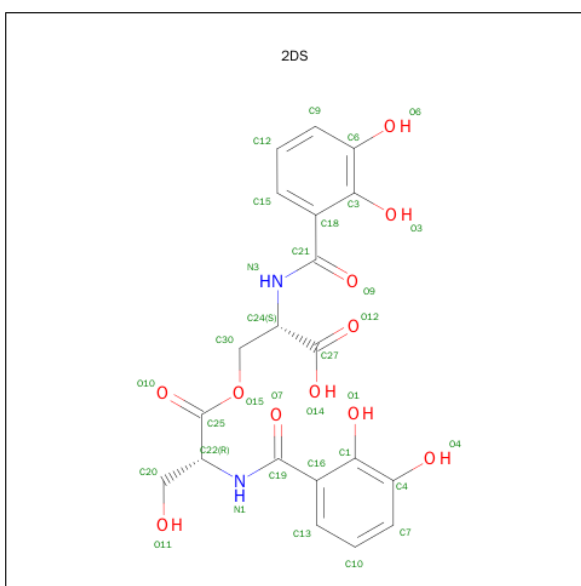
Mol	Chain	Residues	Atoms		ZeroOcc	AltConf
3	B	1	Total	Fe	0	0
			1	1		
3	A	1	Total	Fe	0	0
			1	1		
3	C	1	Total	Fe	0	0
			1	1		

- Molecule 4 is O-[(2R)-2-AMINO-3-(D-SERYLOXY)PROPANOYL]-N-[(2,3-DIHYDROXY PHENYL)CARBONYL]-L-SERINE (three-letter code: 3ET) (formula: C₁₆H₂₁N₃O₁₀).



Mol	Chain	Residues	Atoms				ZeroOcc	AltConf
4	A	1	Total	C	N	O	0	0
			29	16	3	10		

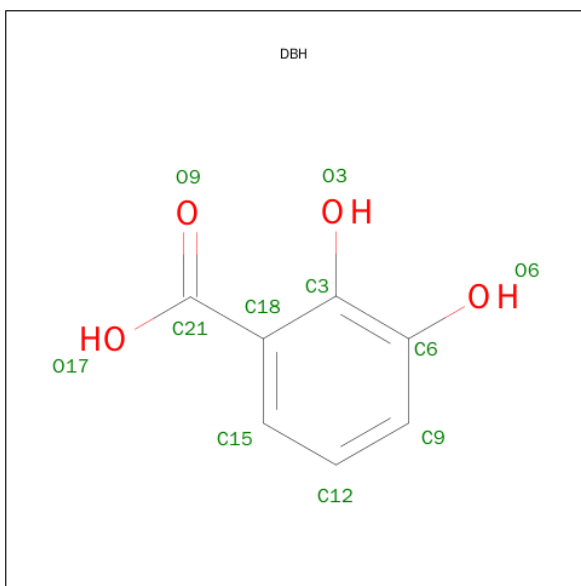
- Molecule 5 is N-[(2,3-DIHYDROXYPHENYL)CARBONYL]-O-[(2R)-2-{[(2,3-DIHYDROXYPHENYL)CARBONYL]AMINO}-3-HYDROXYPROPANOYL]-L-SERINE (three-letter code: 2DS) (formula: C₂₀H₂₀N₂O₁₁).



Mol	Chain	Residues	Atoms				ZeroOcc	AltConf
5	A	1	Total	C	N	O	0	0
			31	19	2	10		

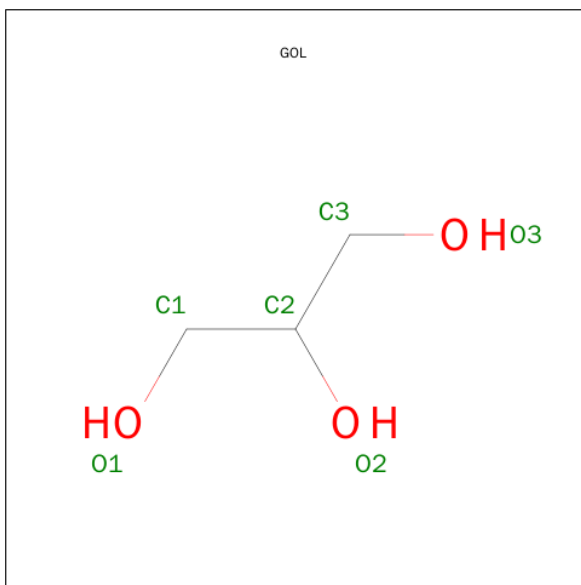
- Molecule 6 is 2,3-DIHYDROXY-BENZOIC ACID (three-letter code: DBH) (formula:

C₇H₆O₄).



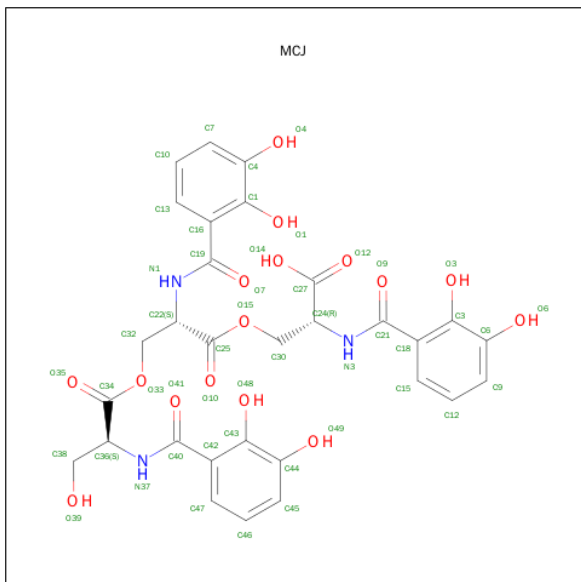
Mol	Chain	Residues	Atoms			ZeroOcc	AltConf
6	B	1	Total	C	O	0	0
			11	7	4		

- Molecule 7 is GLYCEROL (three-letter code: GOL) (formula: C₃H₈O₃).



Mol	Chain	Residues	Atoms			ZeroOcc	AltConf
7	C	1	Total	C	O	0	0
			6	3	3		
7	C	1	Total	C	O	0	0
			6	3	3		

- Molecule 8 is N-[(2,3-DIHYDROXYPHENYL)CARBONYL]-O-[(2S)-2-{[(2,3-DIHYDROXYPHENYL)CARBONYL]AMINO}-3-({N-[(2,3-DIHYDROXYPHENYL)CARBONYL]-L-SERYL}OXY)PROPANOYL]-D-SERINE (three-letter code: MCJ) (formula: $C_{30}H_{29}N_3O_{16}$).



Mol	Chain	Residues	Atoms				ZeroOcc	AltConf
8	C	1	Total	C	N	O	0	1
			54	33	3	18		

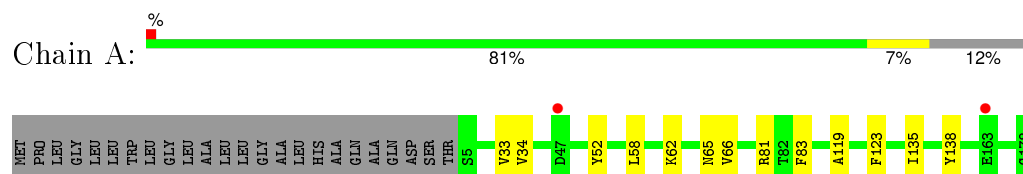
- Molecule 9 is water.

Mol	Chain	Residues	Atoms		ZeroOcc	AltConf
9	A	38	Total	O	0	0
			38	38		
9	B	5	Total	O	0	0
			5	5		
9	C	57	Total	O	0	0
			57	57		

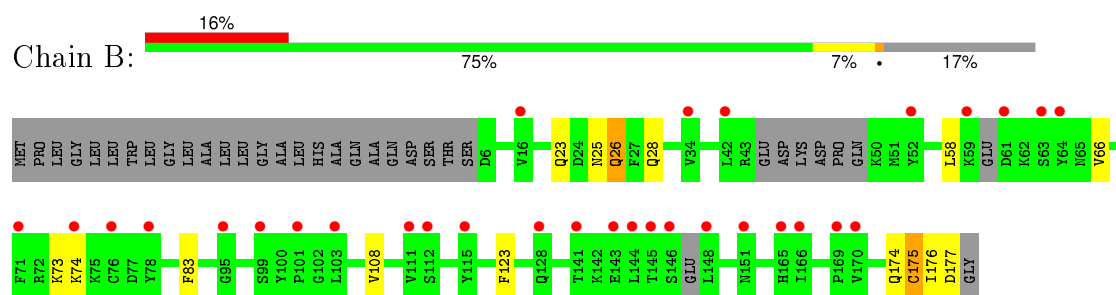
3 Residue-property plots [i](#)

These plots are drawn for all protein, RNA and DNA chains in the entry. The first graphic for a chain summarises the proportions of errors displayed in the second graphic. The second graphic shows the sequence view annotated by issues in geometry and electron density. Residues are color-coded according to the number of geometric quality criteria for which they contain at least one outlier: green = 0, yellow = 1, orange = 2 and red = 3 or more. A red dot above a residue indicates a poor fit to the electron density ($\text{RSRZ} > 2$). Stretches of 2 or more consecutive residues without any outlier are shown as a green connector. Residues present in the sample, but not in the model, are shown in grey.

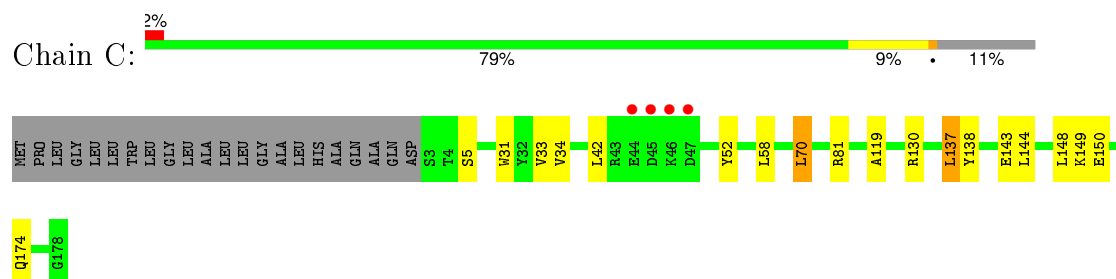
- Molecule 1: Neutrophil gelatinase-associated lipocalin



- Molecule 1: Neutrophil gelatinase-associated lipocalin



- Molecule 1: Neutrophil gelatinase-associated lipocalin



4 Data and refinement statistics

Property	Value	Source
Space group	P 41 21 2	Depositor
Cell constants a, b, c, α , β , γ	114.25Å 114.25Å 117.95Å 90.00° 90.00° 90.00°	Depositor
Resolution (Å)	50.00 – 2.60 37.18 – 2.60	Depositor EDS
% Data completeness (in resolution range)	99.7 (50.00-2.60) 99.8 (37.18-2.60)	Depositor EDS
R_{merge}	0.12	Depositor
R_{sym}	(Not available)	Depositor
$\langle I/\sigma(I) \rangle$ ¹	4.69 (at 2.61Å)	Xtriage
Refinement program	REFMAC 5.2.0019	Depositor
R, R_{free}	0.255 , 0.300 0.251 , 0.292	Depositor DCC
R_{free} test set	1252 reflections (5.37%)	DCC
Wilson B-factor (Å ²)	52.3	Xtriage
Anisotropy	0.028	Xtriage
Bulk solvent k_{sol} (e/Å ³), B_{sol} (Å ²)	0.33 , 45.4	EDS
Estimated twinning fraction	0.015 for -h,l,k 0.014 for -l,-k,-h	Xtriage
L-test for twinning ²	$\langle L \rangle = 0.48$, $\langle L^2 \rangle = 0.31$	Xtriage
Outliers	0 of 24549 reflections	Xtriage
F_o, F_c correlation	0.91	EDS
Total number of atoms	4165	wwPDB-VP
Average B, all atoms (Å ²)	46.0	wwPDB-VP

Xtriage's analysis on translational NCS is as follows: *The largest off-origin peak in the Patterson function is 3.94% of the height of the origin peak. No significant pseudotranslation is detected.*

¹Intensities estimated from amplitudes.

²Theoretical values of $\langle |L| \rangle$, $\langle L^2 \rangle$ for acentric reflections are 0.5, 0.375 respectively for untwinned datasets, and 0.333, 0.2 for perfectly twinned datasets.

5 Model quality [i](#)

5.1 Standard geometry [i](#)

Bond lengths and bond angles in the following residue types are not validated in this section: GOL, 3ET, MCJ, 2DS, DBH, FE, SO4

The Z score for a bond length (or angle) is the number of standard deviations the observed value is removed from the expected value. A bond length (or angle) with $|Z| > 5$ is considered an outlier worth inspection. RMSZ is the root-mean-square of all Z scores of the bond lengths (or angles).

Mol	Chain	Bond lengths		Bond angles	
		RMSZ	# Z >5	RMSZ	# Z >5
1	A	0.31	0/1433	0.47	0/1944
1	B	0.35	0/1141	0.49	0/1562
1	C	0.33	0/1449	0.50	0/1964
All	All	0.33	0/4023	0.49	0/5470

There are no bond length outliers.

There are no bond angle outliers.

There are no chirality outliers.

There are no planarity outliers.

5.2 Too-close contacts [i](#)

In the following table, the Non-H and H(model) columns list the number of non-hydrogen atoms and hydrogen atoms in the chain respectively. The H(added) column lists the number of hydrogen atoms added and optimized by MolProbity. The Clashes column lists the number of clashes within the asymmetric unit, whereas Symm-Clashes lists symmetry related clashes.

Mol	Chain	Non-H	H(model)	H(added)	Clashes	Symm-Clashes
1	A	1390	0	1358	7	0
1	B	1115	0	887	6	0
1	C	1410	0	1374	9	0
2	A	5	0	0	0	0
2	C	5	0	0	0	0
3	A	1	0	0	0	0
3	B	1	0	0	0	0
3	C	1	0	0	0	0
4	A	29	0	18	2	0
5	A	31	0	12	1	0

Continued on next page...

Continued from previous page...

Mol	Chain	Non-H	H(model)	H(added)	Clashes	Symm-Clashes
6	B	11	0	3	0	0
7	C	12	0	16	0	0
8	C	54	0	6	1	0
9	A	38	0	0	0	0
9	B	5	0	0	0	0
9	C	57	0	0	0	0
All	All	4165	0	3674	25	0

The all-atom clashscore is defined as the number of clashes found per 1000 atoms (including hydrogen atoms). The all-atom clashscore for this structure is 3.

All (25) close contacts within the same asymmetric unit are listed below, sorted by their clash magnitude.

Atom-1	Atom-2	Interatomic distance (Å)	Clash overlap (Å)
1:B:73:LYS:N	1:B:74:LYS:HA	2.08	0.69
5:A:182:2DS:O9	5:A:182:2DS:C27	2.47	0.62
1:C:5:SER:O	1:C:130:ARG:NH1	2.38	0.57
1:C:149:LYS:C	1:C:150:GLU:CA	2.75	0.55
1:A:33:VAL:HG21	1:A:52:TYR:CE2	2.44	0.53
1:A:66:VAL:HG21	1:A:83:PHE:CD1	2.45	0.52
1:C:33:VAL:HG21	1:C:52:TYR:CZ	2.44	0.52
1:A:33:VAL:HG21	1:A:52:TYR:CZ	2.47	0.49
1:B:28:GLN:CB	1:B:58:LEU:CG	2.91	0.49
1:B:108:VAL:HG22	1:B:123:PHE:CD1	2.50	0.47
1:C:119:ALA:HB3	1:C:138:TYR:HB2	1.97	0.46
1:C:34:VAL:HG21	1:C:144:LEU:HD12	1.98	0.45
1:C:33:VAL:HG21	1:C:52:TYR:CE2	2.50	0.45
1:C:34:VAL:CG2	1:C:137:LEU:HD13	2.46	0.45
1:A:58:LEU:HD22	1:A:62:LYS:HA	1.99	0.45
1:C:70:LEU:N	1:C:70:LEU:HD12	2.32	0.44
1:A:135:ILE:N	1:A:135:ILE:HD12	2.33	0.44
1:B:66:VAL:HG21	1:B:83:PHE:CD1	2.53	0.43
1:A:119:ALA:HB3	1:A:138:TYR:HB2	2.02	0.42
1:B:23:GLN:CB	1:B:26:GLN:HG3	2.48	0.42
4:A:181:3ET:O9	4:A:181:3ET:H30	2.18	0.42
1:A:123:PHE:HB3	4:A:181:3ET:H9	2.02	0.41
1:C:31:TRP:CE3	1:C:138:TYR:HB3	2.55	0.41
1:B:174:GLN:O	1:B:176:ILE:N	2.50	0.41

There are no symmetry-related clashes.

5.3 Torsion angles

5.3.1 Protein backbone

In the following table, the Percentiles column shows the percent Ramachandran outliers of the chain as a percentile score with respect to all X-ray entries followed by that with respect to entries of similar resolution.

The Analysed column shows the number of residues for which the backbone conformation was analysed, and the total number of residues.

Mol	Chain	Analysed	Favoured	Allowed	Outliers	Percentiles	
1	A	174/198 (88%)	170 (98%)	4 (2%)	0	100	100
1	B	156/198 (79%)	145 (93%)	10 (6%)	1 (1%)	30	56
1	C	173/198 (87%)	167 (96%)	6 (4%)	0	100	100
All	All	503/594 (85%)	482 (96%)	20 (4%)	1 (0%)	52	77

All (1) Ramachandran outliers are listed below:

Mol	Chain	Res	Type
1	B	175	CYS

5.3.2 Protein sidechains

In the following table, the Percentiles column shows the percent sidechain outliers of the chain as a percentile score with respect to all X-ray entries followed by that with respect to entries of similar resolution.

The Analysed column shows the number of residues for which the sidechain conformation was analysed, and the total number of residues.

Mol	Chain	Analysed	Rotameric	Outliers	Percentiles	
1	A	149/175 (85%)	146 (98%)	3 (2%)	63	85
1	B	84/175 (48%)	80 (95%)	4 (5%)	31	58
1	C	151/175 (86%)	143 (95%)	8 (5%)	28	53
All	All	384/525 (73%)	369 (96%)	15 (4%)	39	68

All (15) residues with a non-rotameric sidechain are listed below:

Mol	Chain	Res	Type
1	A	34	VAL
1	A	65	ASN

Continued on next page...

Continued from previous page...

Mol	Chain	Res	Type
1	A	81	ARG
1	B	25	ASN
1	B	26	GLN
1	B	175	CYS
1	B	177	ASP
1	C	42	LEU
1	C	58	LEU
1	C	70	LEU
1	C	81	ARG
1	C	137	LEU
1	C	143	GLU
1	C	148	LEU
1	C	174	GLN

Some sidechains can be flipped to improve hydrogen bonding and reduce clashes. There are no such sidechains identified.

5.3.3 RNA [i](#)

There are no RNA molecules in this entry.

5.4 Non-standard residues in protein, DNA, RNA chains [i](#)

There are no non-standard protein/DNA/RNA residues in this entry.

5.5 Carbohydrates [i](#)

There are no carbohydrates in this entry.

5.6 Ligand geometry [i](#)

Of 12 ligands modelled in this entry, 3 are monoatomic - leaving 9 for Mogul analysis.

In the following table, the Counts columns list the number of bonds (or angles) for which Mogul statistics could be retrieved, the number of bonds (or angles) that are observed in the model and the number of bonds (or angles) that are defined in the chemical component dictionary. The Link column lists molecule types, if any, to which the group is linked. The Z score for a bond length (or angle) is the number of standard deviations the observed value is removed from the expected value. A bond length (or angle) with $|Z| > 2$ is considered an outlier worth inspection. RMSZ is the root-mean-square of all Z scores of the bond lengths (or angles).

Mol	Type	Chain	Res	Link	Bond lengths			Bond angles		
					Counts	RMSZ	# Z > 2	Counts	RMSZ	# Z > 2
2	SO4	A	179	-	4,4,4	0.21	0	6,6,6	0.08	0
4	3ET	A	181	3	23,29,29	1.92	2 (8%)	29,39,39	1.37	4 (13%)
5	2DS	A	182	3	28,32,34	0.93	1 (3%)	38,44,47	1.13	4 (10%)
6	DBH	B	180	3	8,11,11	0.38	0	11,15,15	0.78	1 (9%)
2	SO4	C	179	-	4,4,4	0.22	0	6,6,6	0.10	0
7	GOL	C	181	-	5,5,5	0.37	0	5,5,5	0.25	0
7	GOL	C	182	-	5,5,5	0.37	0	5,5,5	0.29	0
8	MCJ	C	183[A]	-	47,51,51	2.91	9 (19%)	65,71,71	1.65	11 (16%)
8	MCJ	C	183[B]	-	47,51,51	2.83	9 (19%)	65,71,71	1.61	12 (18%)

In the following table, the Chirals column lists the number of chiral outliers, the number of chiral centers analysed, the number of these observed in the model and the number defined in the chemical component dictionary. Similar counts are reported in the Torsion and Rings columns. '-' means no outliers of that kind were identified.

Mol	Type	Chain	Res	Link	Chirals	Torsions	Rings
2	SO4	A	179	-	-	0/0/0/0	0/0/0/0
4	3ET	A	181	3	-	0/28/32/32	0/1/1/1
5	2DS	A	182	3	-	0/22/26/31	0/2/2/2
6	DBH	B	180	3	-	0/0/4/4	0/1/1/1
2	SO4	C	179	-	-	0/0/0/0	0/0/0/0
7	GOL	C	181	-	-	0/4/4/4	0/0/0/0
7	GOL	C	182	-	-	0/4/4/4	0/0/0/0
8	MCJ	C	183[A]	-	1/1/9/12	0/44/48/48	0/3/3/3
8	MCJ	C	183[B]	-	1/1/9/12	0/44/48/48	0/3/3/3

All (21) bond length outliers are listed below:

Mol	Chain	Res	Type	Atoms	Z	Observed(Å)	Ideal(Å)
8	C	183[A]	MCJ	C24-N3	-8.95	1.33	1.46
8	C	183[B]	MCJ	C24-N3	-7.71	1.35	1.46
8	C	183[A]	MCJ	O4-C4	-5.40	1.25	1.36
8	C	183[B]	MCJ	O4-C4	-5.40	1.25	1.36
8	C	183[A]	MCJ	C18-C3	4.24	1.48	1.41
8	C	183[B]	MCJ	C18-C3	4.24	1.48	1.41
5	A	182	2DS	O15-C25	4.43	1.46	1.33
8	C	183[A]	MCJ	C42-C43	4.67	1.49	1.41
8	C	183[B]	MCJ	C42-C43	4.67	1.49	1.41
8	C	183[A]	MCJ	O33-C34	5.88	1.45	1.33
8	C	183[B]	MCJ	O33-C34	5.88	1.45	1.33
4	A	181	3ET	O33-C34	5.98	1.46	1.33

Continued on next page...

Continued from previous page...

Mol	Chain	Res	Type	Atoms	Z	Observed(Å)	Ideal(Å)
8	C	183[A]	MCJ	C6-C3	6.33	1.47	1.39
8	C	183[B]	MCJ	C6-C3	6.33	1.47	1.39
4	A	181	3ET	O15-C25	6.38	1.46	1.33
8	C	183[A]	MCJ	O15-C25	6.63	1.47	1.33
8	C	183[B]	MCJ	O15-C25	6.63	1.47	1.33
8	C	183[A]	MCJ	C4-C1	7.51	1.48	1.39
8	C	183[B]	MCJ	C4-C1	7.51	1.48	1.39
8	C	183[A]	MCJ	C44-C43	8.06	1.49	1.39
8	C	183[B]	MCJ	C44-C43	8.06	1.49	1.39

All (32) bond angle outliers are listed below:

Mol	Chain	Res	Type	Atoms	Z	Observed(°)	Ideal(°)
8	C	183[A]	MCJ	C32-C22-N1	-4.18	100.90	111.31
8	C	183[B]	MCJ	C32-C22-N1	-4.18	100.90	111.31
8	C	183[A]	MCJ	C42-C43-C44	-3.07	118.14	120.14
8	C	183[B]	MCJ	C42-C43-C44	-3.07	118.14	120.14
8	C	183[A]	MCJ	O33-C34-O35	-2.82	118.31	124.05
8	C	183[B]	MCJ	O33-C34-O35	-2.82	118.31	124.05
8	C	183[A]	MCJ	C18-C3-C6	-2.78	118.32	120.14
8	C	183[B]	MCJ	C18-C3-C6	-2.78	118.32	120.14
5	A	182	2DS	C30-C24-N3	-2.70	104.44	111.14
8	C	183[A]	MCJ	O15-C25-O10	-2.36	119.23	124.05
8	C	183[B]	MCJ	O15-C25-O10	-2.36	119.23	124.05
5	A	182	2DS	C25-C22-N1	-2.35	107.53	112.85
4	A	181	3ET	O33-C34-O35	-2.22	119.53	124.05
6	B	180	DBH	C15-C18-C3	2.34	120.10	118.04
8	C	183[B]	MCJ	O15-C30-C24	2.41	116.05	108.81
5	A	182	2DS	O15-C25-C22	2.62	120.16	110.82
4	A	181	3ET	C30-O15-C25	2.62	122.57	116.94
8	C	183[B]	MCJ	C30-C24-N3	2.80	118.11	111.14
8	C	183[A]	MCJ	C32-O33-C34	2.82	123.00	116.94
8	C	183[B]	MCJ	C32-O33-C34	2.82	123.00	116.94
8	C	183[A]	MCJ	C42-C40-N37	2.90	122.29	116.88
8	C	183[B]	MCJ	C42-C40-N37	2.90	122.29	116.88
8	C	183[A]	MCJ	O9-C21-N3	3.32	128.43	122.44
8	C	183[B]	MCJ	O9-C21-N3	3.32	128.43	122.44
4	A	181	3ET	O33-C34-C36	3.33	120.00	111.72
5	A	182	2DS	C22-N1-C19	3.63	129.55	121.30
4	A	181	3ET	O15-C25-C22	3.72	120.98	111.72
8	C	183[A]	MCJ	O33-C34-C36	3.83	121.31	111.71
8	C	183[B]	MCJ	O33-C34-C36	3.83	121.31	111.71

Continued on next page...

Continued from previous page...

Mol	Chain	Res	Type	Atoms	Z	Observed(°)	Ideal(°)
8	C	183[A]	MCJ	C30-O15-C25	3.93	125.39	116.94
8	C	183[A]	MCJ	O15-C25-C22	4.18	122.19	111.71
8	C	183[B]	MCJ	O15-C25-C22	4.18	122.19	111.71

All (2) chirality outliers are listed below:

Mol	Chain	Res	Type	Atom
8	C	183[A]	MCJ	C24
8	C	183[B]	MCJ	C24

There are no torsion outliers.

There are no ring outliers.

3 monomers are involved in 4 short contacts:

Mol	Chain	Res	Type	Clashes	Symm-Clashes
4	A	181	3ET	2	0
5	A	182	2DS	1	0
8	C	183[B]	MCJ	1	0

5.7 Other polymers [i](#)

There are no such residues in this entry.

5.8 Polymer linkage issues [i](#)

There are no chain breaks in this entry.

6 Fit of model and data ⓘ

6.1 Protein, DNA and RNA chains ⓘ

In the following table, the column labelled ‘#RSRZ> 2’ contains the number (and percentage) of RSRZ outliers, followed by percent RSRZ outliers for the chain as percentile scores relative to all X-ray entries and entries of similar resolution. The OWAB column contains the minimum, median, 95th percentile and maximum values of the occupancy-weighted average B-factor per residue. The column labelled ‘Q< 0.9’ lists the number of (and percentage) of residues with an average occupancy less than 0.9.

Mol	Chain	Analysed	<RSRZ>	#RSRZ>2	OWAB(Å ²)	Q<0.9
1	A	174/198 (87%)	0.03	2 (1%) 82 79	27, 37, 47, 53	0
1	B	164/198 (82%)	1.20	31 (18%) 2 1	58, 77, 85, 87	0
1	C	176/198 (88%)	0.04	4 (2%) 64 57	21, 30, 45, 54	2 (1%)
All	All	514/594 (86%)	0.41	37 (7%) 18 13	21, 39, 83, 87	2 (0%)

All (37) RSRZ outliers are listed below:

Mol	Chain	Res	Type	RSRZ
1	B	101	PRO	5.8
1	B	165	HIS	5.6
1	B	78	TYR	4.7
1	B	148	LEU	4.5
1	B	112	SER	4.3
1	B	146	SER	4.0
1	B	170	VAL	4.0
1	B	71	PHE	3.8
1	B	145	THR	3.8
1	B	61	ASP	3.7
1	B	143	GLU	3.3
1	B	34	VAL	3.2
1	B	103	LEU	3.1
1	C	44	GLU	3.0
1	B	63	SER	3.0
1	B	115	TYR	2.9
1	B	99	SER	2.7
1	B	144	LEU	2.7
1	B	141	THR	2.7
1	B	74	LYS	2.7
1	B	42	LEU	2.6
1	B	16	VAL	2.6
1	B	169	PRO	2.6

Continued on next page...

Continued from previous page...

Mol	Chain	Res	Type	RSRZ
1	B	128	GLN	2.6
1	B	64	TYR	2.5
1	A	47	ASP	2.4
1	B	76	CYS	2.4
1	B	166	ILE	2.3
1	B	151	ASN	2.3
1	B	95	GLY	2.2
1	B	59	LYS	2.2
1	B	52	TYR	2.2
1	A	163	GLU	2.2
1	C	45	ASP	2.2
1	C	46	LYS	2.1
1	B	111	VAL	2.1
1	C	47	ASP	2.1

6.2 Non-standard residues in protein, DNA, RNA chains [i](#)

There are no non-standard protein/DNA/RNA residues in this entry.

6.3 Carbohydrates [i](#)

There are no carbohydrates in this entry.

6.4 Ligands [i](#)

In the following table, the Atoms column lists the number of modelled atoms in the group and the number defined in the chemical component dictionary. LLDF column lists the quality of electron density of the group with respect to its neighbouring residues in protein, DNA or RNA chains. The B-factors column lists the minimum, median, 95th percentile and maximum values of B factors of atoms in the group. The column labelled 'Q< 0.9' lists the number of atoms with occupancy less than 0.9.

Mol	Type	Chain	Res	Atoms	RSCC	RSR	LLDF	B-factors(Å ²)	Q<0.9
7	GOL	C	181	6/6	0.84	0.37	7.73	78,79,79,80	0
2	SO4	C	179	5/5	0.81	0.34	2.87	90,91,91,91	0
4	3ET	A	181	29/29	0.84	0.26	2.49	41,51,60,60	0
8	MCJ	C	183[B]	49/49	0.85	0.24	2.03	42,55,61,62	5
8	MCJ	C	183[A]	49/49	0.85	0.24	2.03	42,55,61,62	5
5	2DS	A	182	31/33	0.89	0.24	1.42	30,33,41,44	0
6	DBH	B	180	11/11	0.83	0.19	-0.45	74,75,76,76	0

Continued on next page...

Continued from previous page...

Mol	Type	Chain	Res	Atoms	RSCC	RSR	LLDF	B-factors(\AA^2)	Q<0.9
7	GOL	C	182	6/6	0.88	0.19	-	62,63,63,63	0
2	SO4	A	179	5/5	0.85	0.28	-	92,92,92,92	0
3	FE	B	179	1/1	0.86	0.20	-	86,86,86,86	0
3	FE	C	180	1/1	0.97	0.08	-	45,45,45,45	0
3	FE	A	180	1/1	0.99	0.09	-	39,39,39,39	0

6.5 Other polymers [i](#)

There are no such residues in this entry.