



Full wwPDB X-ray Structure Validation Report ⓘ

Feb 1, 2016 – 05:20 PM GMT

PDB ID : 4I0H
Title : SPR and structural analysis yield insight towards mechanism of inhibition of BACE inhibitors.
Authors : Yao, N.; Brecht, E.
Deposited on : 2012-11-16
Resolution : 2.20 Å(reported)

This is a Full wwPDB X-ray Structure Validation Report for a publicly released PDB entry.
We welcome your comments at validation@mail.wwpdb.org
A user guide is available at
<http://wwpdb.org/validation/2016/XrayValidationReportHelp>
with specific help available everywhere you see the ⓘ symbol.

The following versions of software and data (see [references ⓘ](#)) were used in the production of this report:

MolProbity : 4.02b-467
Mogul : 1.7 (RC4), CSD as536be (2015)
Xtriage (Phenix) : 1.9-1692
EDS : rb-20026688
Percentile statistics : 20151230.v01 (using entries in the PDB archive December 30th 2015)
Refmac : 5.8.0135
CCP4 : 6.5.0
Ideal geometry (proteins) : Engh & Huber (2001)
Ideal geometry (DNA, RNA) : Parkinson et al. (1996)
Validation Pipeline (wwPDB-VP) : trunk26865

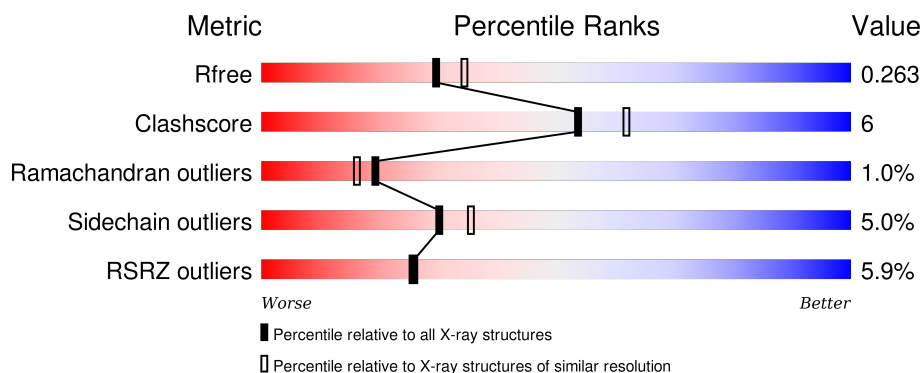
1 Overall quality at a glance

The following experimental techniques were used to determine the structure:

X-RAY DIFFRACTION

The reported resolution of this entry is 2.20 Å.

Percentile scores (ranging between 0-100) for global validation metrics of the entry are shown in the following graphic. The table shows the number of entries on which the scores are based.



Metric	Whole archive (#Entries)	Similar resolution (#Entries, resolution range(Å))
R_{free}	91344	3774 (2.20-2.20)
Clashscore	102246	4477 (2.20-2.20)
Ramachandran outliers	100387	4404 (2.20-2.20)
Sidechain outliers	100360	4405 (2.20-2.20)
RSRZ outliers	91569	3781 (2.20-2.20)

The table below summarises the geometric issues observed across the polymeric chains and their fit to the electron density. The red, orange, yellow and green segments on the lower bar indicate the fraction of residues that contain outliers for ≥ 3 , 2, 1 and 0 types of geometric quality criteria. A grey segment represents the fraction of residues that are not modelled. The numeric value for each fraction is indicated below the corresponding segment, with a dot representing fractions $\leq 5\%$. The upper red bar (where present) indicates the fraction of residues that have poor fit to the electron density. The numeric value is given above the bar.

Mol	Chain	Length	Quality of chain
1	A	406	
1	B	406	
1	C	406	

2 Entry composition

There are 3 unique types of molecules in this entry. The entry contains 9252 atoms, of which 0 are hydrogens and 0 are deuteriums.

In the tables below, the ZeroOcc column contains the number of atoms modelled with zero occupancy, the AltConf column contains the number of residues with at least one atom in alternate conformation and the Trace column contains the number of residues modelled with at most 2 atoms.

- Molecule 1 is a protein called Beta-secretase 1.

Mol	Chain	Residues	Atoms					ZeroOcc	AltConf	Trace
1	A	374	Total	C	N	O	S	0	0	0
			2941	1883	489	555	14			
1	B	375	Total	C	N	O	S	0	0	0
			2950	1894	490	552	14			
1	C	374	Total	C	N	O	S	0	0	0
			2942	1890	489	549	14			

There are 27 discrepancies between the modelled and reference sequences:

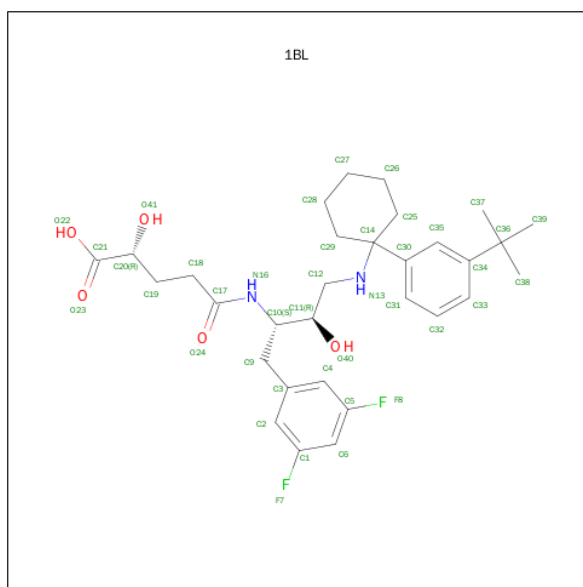
Chain	Residue	Modelled	Actual	Comment	Reference
A	1	MET	-	EXPRESSION TAG	UNP P56817
A	399	ARG	-	EXPRESSION TAG	UNP P56817
A	400	SER	-	EXPRESSION TAG	UNP P56817
A	401	HIS	-	EXPRESSION TAG	UNP P56817
A	402	HIS	-	EXPRESSION TAG	UNP P56817
A	403	HIS	-	EXPRESSION TAG	UNP P56817
A	404	HIS	-	EXPRESSION TAG	UNP P56817
A	405	HIS	-	EXPRESSION TAG	UNP P56817
A	406	HIS	-	EXPRESSION TAG	UNP P56817
B	1	MET	-	EXPRESSION TAG	UNP P56817
B	399	ARG	-	EXPRESSION TAG	UNP P56817
B	400	SER	-	EXPRESSION TAG	UNP P56817
B	401	HIS	-	EXPRESSION TAG	UNP P56817
B	402	HIS	-	EXPRESSION TAG	UNP P56817
B	403	HIS	-	EXPRESSION TAG	UNP P56817
B	404	HIS	-	EXPRESSION TAG	UNP P56817
B	405	HIS	-	EXPRESSION TAG	UNP P56817
B	406	HIS	-	EXPRESSION TAG	UNP P56817
C	1	MET	-	EXPRESSION TAG	UNP P56817
C	399	ARG	-	EXPRESSION TAG	UNP P56817
C	400	SER	-	EXPRESSION TAG	UNP P56817
C	401	HIS	-	EXPRESSION TAG	UNP P56817
C	402	HIS	-	EXPRESSION TAG	UNP P56817

Continued on next page...

Continued from previous page...

Chain	Residue	Modelled	Actual	Comment	Reference
C	403	HIS	-	EXPRESSION TAG	UNP P56817
C	404	HIS	-	EXPRESSION TAG	UNP P56817
C	405	HIS	-	EXPRESSION TAG	UNP P56817
C	406	HIS	-	EXPRESSION TAG	UNP P56817

- Molecule 2 is (2R)-5-[[[(2S,3R)-4-{[1-(3-TERT-BUTYLPHENYL)CYCLOHEXYL]AMINO}-1-(3,5-DIFLUOROPHENYL)-3-HYDROXYBUTAN-2-YL]AMINO}-2-HYDROXY-5-OXOPENTANOIC ACID (three-letter code: 1BL) (formula: C₃₁H₄₂F₂N₂O₅).



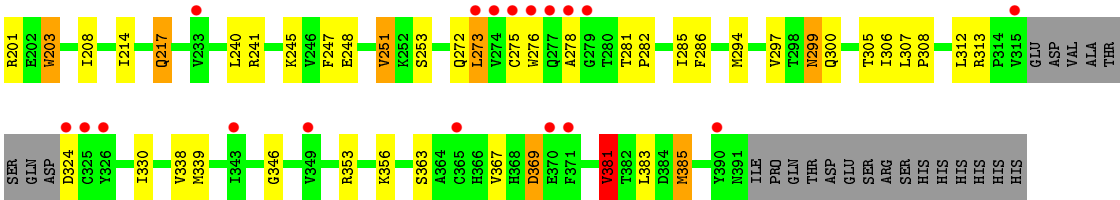
Mol	Chain	Residues	Atoms					ZeroOcc	AltConf
2	A	1	Total	C	F	N	O	0	0
			40	31	2	2	5		
2	B	1	Total	C	F	N	O	0	0
			40	31	2	2	5		
2	C	1	Total	C	F	N	O	0	0
			40	31	2	2	5		

- Molecule 3 is water.

Mol	Chain	Residues	Atoms		ZeroOcc	AltConf
3	A	106	Total	O	0	0
			106	106		
3	B	95	Total	O	0	0
			95	95		
3	C	98	Total	O	0	0
			98	98		

- Molecule 1: Beta-secretase 1





4 Data and refinement statistics

Property	Value	Source
Space group	P 1 21 1	Depositor
Cell constants a, b, c, α , β , γ	83.20Å 105.47Å 100.27Å 90.00° 105.11° 90.00°	Depositor
Resolution (Å)	60.00 – 2.20 38.11 – 2.20	Depositor EDS
% Data completeness (in resolution range)	99.1 (60.00-2.20) 99.1 (38.11-2.20)	Depositor EDS
R_{merge}	(Not available)	Depositor
R_{sym}	(Not available)	Depositor
$\langle I/\sigma(I) \rangle$ ¹	1.28 (at 2.20Å)	Xtriage
Refinement program	REFMAC 5.5.0102	Depositor
R, R_{free}	0.217 , 0.267 0.218 , 0.263	Depositor DCC
R_{free} test set	4232 reflections (5.30%)	DCC
Wilson B-factor (Å ²)	51.1	Xtriage
Anisotropy	0.075	Xtriage
Bulk solvent k_{sol} (e/Å ³), B_{sol} (Å ²)	0.35 , 52.2	EDS
Estimated twinning fraction	No twinning to report.	Xtriage
L-test for twinning ²	$\langle L \rangle = 0.50$, $\langle L^2 \rangle = 0.34$	Xtriage
Outliers	0 of 84024 reflections	Xtriage
F_o, F_c correlation	0.95	EDS
Total number of atoms	9252	wwPDB-VP
Average B, all atoms (Å ²)	67.0	wwPDB-VP

Xtriage's analysis on translational NCS is as follows: *The largest off-origin peak in the Patterson function is 3.58% of the height of the origin peak. No significant pseudotranslation is detected.*

¹Intensities estimated from amplitudes.

²Theoretical values of $\langle |L| \rangle$, $\langle L^2 \rangle$ for acentric reflections are 0.5, 0.375 respectively for untwinned datasets, and 0.333, 0.2 for perfectly twinned datasets.

5 Model quality

5.1 Standard geometry

Bond lengths and bond angles in the following residue types are not validated in this section: 1BL

The Z score for a bond length (or angle) is the number of standard deviations the observed value is removed from the expected value. A bond length (or angle) with $|Z| > 5$ is considered an outlier worth inspection. RMSZ is the root-mean-square of all Z scores of the bond lengths (or angles).

Mol	Chain	Bond lengths		Bond angles	
		RMSZ	# $ Z > 5$	RMSZ	# $ Z > 5$
1	A	1.08	4/3015 (0.1%)	0.99	8/4095 (0.2%)
1	B	1.08	5/3026 (0.2%)	0.97	4/4111 (0.1%)
1	C	1.06	2/3018 (0.1%)	0.97	6/4100 (0.1%)
All	All	1.07	11/9059 (0.1%)	0.98	18/12306 (0.1%)

Chiral center outliers are detected by calculating the chiral volume of a chiral center and verifying if the center is modelled as a planar moiety or with the opposite hand. A planarity outlier is detected by checking planarity of atoms in a peptide group, atoms in a mainchain group or atoms of a sidechain that are expected to be planar.

Mol	Chain	#Chirality outliers	#Planarity outliers
1	A	0	2
1	B	0	1
1	C	0	1
All	All	0	4

All (11) bond length outliers are listed below:

Mol	Chain	Res	Type	Atoms	Z	Observed(Å)	Ideal(Å)
1	A	13	ARG	CG-CD	7.29	1.70	1.51
1	B	386	GLU	CG-CD	6.79	1.62	1.51
1	A	85	GLU	CG-CD	6.71	1.62	1.51
1	A	381	VAL	CB-CG1	-5.92	1.40	1.52
1	B	5	PHE	N-CA	5.85	1.58	1.46
1	A	4	SER	N-CA	5.66	1.57	1.46
1	C	174	ALA	CA-CB	5.51	1.64	1.52
1	C	71	LYS	CD-CE	5.34	1.64	1.51
1	B	9	VAL	CB-CG1	-5.28	1.41	1.52
1	B	85	GLU	CB-CG	5.07	1.61	1.52
1	B	190	TYR	CD2-CE2	5.06	1.47	1.39

All (18) bond angle outliers are listed below:

Mol	Chain	Res	Type	Atoms	Z	Observed(°)	Ideal(°)
1	A	13	ARG	NE-CZ-NH2	9.15	124.88	120.30
1	A	211	ARG	NE-CZ-NH2	-7.21	116.69	120.30
1	C	175	SER	N-CA-C	6.91	129.67	111.00
1	C	313	ARG	NE-CZ-NH1	6.27	123.44	120.30
1	B	345	GLU	C-N-CA	-5.94	109.83	122.30
1	A	241	ARG	NE-CZ-NH1	-5.81	117.39	120.30
1	A	357	ARG	NE-CZ-NH2	-5.76	117.42	120.30
1	A	96	GLY	C-N-CD	5.74	140.45	128.40
1	B	60	ARG	NE-CZ-NH1	-5.72	117.44	120.30
1	C	353	ARG	NE-CZ-NH2	-5.68	117.46	120.30
1	C	313	ARG	NE-CZ-NH2	-5.46	117.57	120.30
1	A	222	ASP	CB-CG-OD1	5.40	123.16	118.30
1	B	5	PHE	N-CA-C	5.37	125.51	111.00
1	C	381	VAL	CB-CA-C	-5.31	101.31	111.40
1	A	297	VAL	CA-CB-CG1	5.13	118.59	110.90
1	C	339	MET	CG-SD-CE	-5.09	92.06	100.20
1	A	369	ASP	N-CA-C	-5.05	97.37	111.00
1	B	365	CYS	CB-CA-C	5.01	120.43	110.40

There are no chirality outliers.

All (4) planarity outliers are listed below:

Mol	Chain	Res	Type	Group
1	A	203	TRP	Peptide
1	A	4	SER	Peptide
1	B	4	SER	Peptide
1	C	4	SER	Peptide

5.2 Too-close contacts

In the following table, the Non-H and H(model) columns list the number of non-hydrogen atoms and hydrogen atoms in the chain respectively. The H(added) column lists the number of hydrogen atoms added and optimized by MolProbity. The Clashes column lists the number of clashes within the asymmetric unit, whereas Symm-Clashes lists symmetry related clashes.

Mol	Chain	Non-H	H(model)	H(added)	Clashes	Symm-Clashes
1	A	2941	0	2848	34	0
1	B	2950	0	2865	36	0
1	C	2942	0	2861	42	0
2	A	40	0	41	0	0

Continued on next page...

Continued from previous page...

Mol	Chain	Non-H	H(model)	H(added)	Clashes	Symm-Clashes
2	B	40	0	41	3	0
2	C	40	0	41	0	0
3	A	106	0	0	1	0
3	B	95	0	0	3	0
3	C	98	0	0	4	0
All	All	9252	0	8697	114	0

The all-atom clashscore is defined as the number of clashes found per 1000 atoms (including hydrogen atoms). The all-atom clashscore for this structure is 6.

All (114) close contacts within the same asymmetric unit are listed below, sorted by their clash magnitude.

Atom-1	Atom-2	Interatomic distance (Å)	Clash overlap (Å)
1:C:4:SER:N	1:C:5:PHE:HB2	1.82	0.95
1:A:297:VAL:HG12	1:A:300:GLN:HG2	1.55	0.86
1:C:5:PHE:CE1	1:C:7:GLU:HG3	2.13	0.83
1:C:248:GLU:HG2	3:C:665:HOH:O	1.79	0.82
1:C:247:PHE:O	1:C:251:VAL:HG13	1.80	0.80
1:B:200:ARG:HD2	1:B:208:ILE:HD11	1.64	0.78
1:C:5:PHE:CD1	1:C:7:GLU:HG3	2.19	0.78
1:B:116:ILE:O	1:B:119:SER:HB3	1.84	0.77
1:C:297:VAL:CG2	1:C:300:GLN:HG2	2.15	0.77
1:B:101:VAL:HG11	1:B:146:LEU:HA	1.68	0.76
1:A:262:LYS:HA	3:A:652:HOH:O	1.85	0.75
1:C:297:VAL:HG22	1:C:300:GLN:CG	2.17	0.74
1:B:391:ASN:O	1:B:392:ILE:HB	1.91	0.70
1:A:296:GLU:H	1:A:300:GLN:NE2	1.91	0.69
1:C:297:VAL:HG22	1:C:300:GLN:HG2	1.75	0.69
1:C:272:GLN:HG3	3:C:687:HOH:O	1.95	0.67
1:B:131:GLU:OE2	1:B:201:ARG:NH1	2.29	0.64
1:A:384:ASP:OD1	1:A:387:ASP:OD1	2.16	0.63
1:C:282:PRO:O	1:C:285:ILE:HG12	1.99	0.62
1:B:214:ILE:HG13	1:B:219:LEU:HD13	1.81	0.62
1:A:297:VAL:HG12	1:A:300:GLN:CG	2.26	0.61
1:A:4:SER:O	1:A:4:SER:OG	2.03	0.61
2:B:501:1BL:H23	2:B:501:1BL:H43	1.82	0.61
1:B:4:SER:O	1:B:5:PHE:HB2	2.00	0.60
1:B:265:ASP:HB3	3:B:609:HOH:O	2.00	0.60
1:A:174:ALA:O	1:A:175:SER:HB3	2.02	0.59
1:C:200:ARG:HD2	1:C:208:ILE:HD11	1.85	0.58
1:C:5:PHE:HE1	1:C:7:GLU:HG3	1.66	0.58

Continued on next page...

Continued from previous page...

Atom-1	Atom-2	Interatomic distance (Å)	Clash overlap (Å)
1:A:8:MET:HG2	1:A:96:GLY:HA2	1.84	0.58
1:B:288:VAL:HG12	1:B:307:LEU:HD23	1.86	0.57
1:A:379:PRO:HG2	1:B:381:VAL:HG12	1.85	0.56
1:A:297:VAL:CG1	1:A:300:GLN:HG2	2.33	0.56
1:B:244:LYS:O	1:B:248:GLU:HG2	2.05	0.56
1:A:297:VAL:H	1:A:300:GLN:HE21	1.56	0.54
1:B:306:ILE:HG12	1:B:343:ILE:HD12	1.88	0.54
1:C:299:ASN:HA	1:C:381:VAL:HA	1.89	0.54
1:C:294:MET:HE1	1:C:385:MET:HA	1.89	0.53
1:A:296:GLU:H	1:A:300:GLN:HE22	1.57	0.53
1:C:131:GLU:OE2	1:C:201:ARG:NH1	2.31	0.53
1:C:346:GLY:C	1:C:363:SER:HB2	2.29	0.53
1:B:204:TYR:CE2	1:B:230:LYS:HE3	2.44	0.52
1:A:131:GLU:OE1	1:A:201:ARG:NH1	2.43	0.51
1:B:278:ALA:O	1:B:280:THR:HG23	2.12	0.50
1:A:101:VAL:HG11	1:A:146:LEU:HA	1.94	0.50
1:B:196:TYR:CD2	1:B:357:ARG:HG3	2.48	0.49
1:B:202:GLU:OE2	1:B:356:LYS:HE3	2.12	0.49
1:C:241:ARG:HB2	1:C:338:VAL:HB	1.95	0.49
1:B:217:GLN:HE21	1:B:217:GLN:HA	1.78	0.49
1:C:208:ILE:HG21	1:C:294:MET:CE	2.43	0.48
1:C:305:THR:C	1:C:306:ILE:HD13	2.34	0.48
1:C:297:VAL:HG23	1:C:300:GLN:HG2	1.93	0.48
1:A:296:GLU:N	1:A:300:GLN:NE2	2.61	0.47
1:B:119:SER:O	1:B:120:ASN:HB2	2.15	0.47
2:B:501:1BL:C31	2:B:501:1BL:H23	2.44	0.47
1:C:208:ILE:HG21	1:C:294:MET:HE3	1.96	0.47
1:B:296:GLU:H	1:B:300:GLN:HE22	1.61	0.47
1:A:273:LEU:HD21	1:A:315:VAL:HG11	1.97	0.47
1:A:240:LEU:HB2	1:A:343:ILE:HD11	1.96	0.47
1:A:263:PHE:CD2	1:A:274:VAL:HG21	2.50	0.47
1:C:276:TRP:CE3	1:C:281:THR:HG23	2.50	0.47
1:B:228:TYR:O	1:B:336:GLY:HA2	2.14	0.46
1:B:307:LEU:HB3	1:B:308:PRO:HD2	1.97	0.46
1:A:155:LEU:HD22	1:A:184:GLY:HA2	1.97	0.46
1:A:241:ARG:HG3	1:A:338:VAL:HB	1.96	0.46
1:B:282:PRO:O	1:B:283:TRP:C	2.54	0.46
1:C:201:ARG:HG2	1:C:203:TRP:CD1	2.50	0.46
1:B:282:PRO:HB2	1:B:285:ILE:HG23	1.98	0.46
1:C:29:PRO:O	1:C:30:PRO:C	2.54	0.46
1:C:54:LEU:HD21	1:C:115:PHE:CE2	2.51	0.46

Continued on next page...

Continued from previous page...

Atom-1	Atom-2	Interatomic distance (Å)	Clash overlap (Å)
1:A:262:LYS:HD2	1:A:262:LYS:N	2.31	0.45
1:A:15:LYS:HE3	1:A:118:GLY:O	2.16	0.45
1:A:148:LYS:HE2	1:A:148:LYS:HB3	1.69	0.45
1:B:69:LEU:HA	1:B:69:LEU:HD23	1.83	0.45
1:C:214:ILE:O	1:C:217:GLN:HG2	2.17	0.45
1:B:160:LEU:O	1:B:345:GLU:HA	2.17	0.45
1:C:248:GLU:CG	3:C:665:HOH:O	2.48	0.44
1:B:89:ASP:OD1	1:B:90:LEU:N	2.45	0.44
1:B:299:ASN:O	1:B:381:VAL:HA	2.16	0.44
1:B:132:ILE:HG23	1:B:203:TRP:HB2	1.99	0.44
1:B:218:ASP:OD1	1:B:219:LEU:N	2.50	0.44
1:C:307:LEU:HB3	1:C:308:PRO:HD2	1.99	0.44
1:C:82:TRP:HB2	1:C:108:ILE:HG23	2.00	0.43
1:C:369:ASP:OD1	1:C:369:ASP:C	2.55	0.43
1:C:306:ILE:HD13	1:C:306:ILE:N	2.33	0.43
1:C:101:VAL:HG11	1:C:146:LEU:HD12	2.01	0.43
1:A:32:THR:HG22	1:A:56:ARG:NH1	2.34	0.43
1:A:155:LEU:HD22	1:A:184:GLY:CA	2.49	0.43
1:B:36:LEU:CD2	1:B:38:ASP:HB2	2.49	0.43
1:C:356:LYS:NZ	3:C:662:HOH:O	2.51	0.42
1:C:286:PHE:CE2	1:C:312:LEU:HD11	2.54	0.42
1:B:195:TRP:CD1	1:B:376:VAL:HG12	2.54	0.42
1:B:39:THR:HG21	1:B:351:PHE:CZ	2.55	0.42
1:C:208:ILE:CG2	1:C:294:MET:HE3	2.50	0.42
1:A:228:TYR:HA	1:A:229:ASP:HA	1.57	0.42
2:B:501:1BL:H9	3:B:601:HOH:O	2.19	0.41
1:A:8:MET:SD	1:A:96:GLY:HA2	2.60	0.41
1:C:5:PHE:HD1	1:C:7:GLU:HG3	1.77	0.41
1:C:240:LEU:HD23	1:C:330:ILE:HG12	2.02	0.41
1:C:346:GLY:O	1:C:363:SER:CB	2.68	0.41
1:C:346:GLY:O	1:C:363:SER:HB2	2.20	0.41
1:C:275:CYS:HA	1:C:324:ASP:O	2.21	0.41
1:A:263:PHE:HD2	1:A:274:VAL:HG21	1.86	0.41
1:B:8:MET:HG2	1:B:96:GLY:HA2	2.02	0.41
1:A:248:GLU:HA	1:A:251:VAL:HG22	2.02	0.41
1:B:245:LYS:NZ	3:B:654:HOH:O	2.54	0.41
1:B:205:TYR:HB3	1:B:358:ILE:HD11	2.02	0.41
1:C:273:LEU:HG	1:C:273:LEU:H	1.69	0.41
1:B:240:LEU:HD22	1:B:343:ILE:HD11	2.03	0.41
1:C:116:ILE:HB	1:C:119:SER:HB3	2.02	0.41
1:A:350:VAL:O	1:A:358:ILE:HA	2.21	0.40

Continued on next page...

Continued from previous page...

Atom-1	Atom-2	Interatomic distance (Å)	Clash overlap (Å)
1:A:273:LEU:HD13	1:A:325:CYS:HB3	2.04	0.40
1:A:8:MET:CG	1:A:96:GLY:HA2	2.49	0.40
1:A:211:ARG:HB3	1:A:292:TYR:HB2	2.03	0.40
1:A:51:HIS:CG	1:A:52:PRO:HD2	2.57	0.40

There are no symmetry-related clashes.

5.3 Torsion angles [i](#)

5.3.1 Protein backbone [i](#)

In the following table, the Percentiles column shows the percent Ramachandran outliers of the chain as a percentile score with respect to all X-ray entries followed by that with respect to entries of similar resolution.

The Analysed column shows the number of residues for which the backbone conformation was analysed, and the total number of residues.

Mol	Chain	Analysed	Favoured	Allowed	Outliers	Percentiles	
1	A	368/406 (91%)	340 (92%)	24 (6%)	4 (1%)	17	14
1	B	369/406 (91%)	345 (94%)	20 (5%)	4 (1%)	17	14
1	C	368/406 (91%)	342 (93%)	23 (6%)	3 (1%)	24	22
All	All	1105/1218 (91%)	1027 (93%)	67 (6%)	11 (1%)	19	16

All (11) Ramachandran outliers are listed below:

Mol	Chain	Res	Type
1	A	175	SER
1	B	5	PHE
1	C	369	ASP
1	B	260	THR
1	A	272	GLN
1	B	278	ALA
1	A	278	ALA
1	B	70	ARG
1	C	30	PRO
1	C	278	ALA
1	A	76	PRO

5.3.2 Protein sidechains ⓘ

In the following table, the Percentiles column shows the percent sidechain outliers of the chain as a percentile score with respect to all X-ray entries followed by that with respect to entries of similar resolution.

The Analysed column shows the number of residues for which the sidechain conformation was analysed, and the total number of residues.

Mol	Chain	Analysed	Rotameric	Outliers	Percentiles	
1	A	318/348 (91%)	305 (96%)	13 (4%)	37	45
1	B	319/348 (92%)	301 (94%)	18 (6%)	26	29
1	C	318/348 (91%)	301 (95%)	17 (5%)	28	32
All	All	955/1044 (92%)	907 (95%)	48 (5%)	30	35

All (48) residues with a non-rotameric sidechain are listed below:

Mol	Chain	Res	Type
1	A	5	PHE
1	A	64	SER
1	A	70	ARG
1	A	131	GLU
1	A	203	TRP
1	A	217	GLN
1	A	252	LYS
1	A	265	ASP
1	A	297	VAL
1	A	298	THR
1	A	317	ASP
1	A	381	VAL
1	A	384	ASP
1	B	5	PHE
1	B	37	VAL
1	B	56	ARG
1	B	61	GLN
1	B	70	ARG
1	B	81	LYS
1	B	113	LYS
1	B	203	TRP
1	B	214	ILE
1	B	217	GLN
1	B	232	ILE
1	B	245	LYS
1	B	259	SER

Continued on next page...

Continued from previous page...

Mol	Chain	Res	Type
1	B	262	LYS
1	B	281	THR
1	B	297	VAL
1	B	323	ASP
1	B	356	LYS
1	C	42	SER
1	C	56	ARG
1	C	70	ARG
1	C	94	PRO
1	C	117	ASN
1	C	148	LYS
1	C	203	TRP
1	C	217	GLN
1	C	245	LYS
1	C	251	VAL
1	C	253	SER
1	C	273	LEU
1	C	299	ASN
1	C	367	VAL
1	C	381	VAL
1	C	383	LEU
1	C	385	MET

Some sidechains can be flipped to improve hydrogen bonding and reduce clashes. All (10) such sidechains are listed below:

Mol	Chain	Res	Type
1	A	104	ASN
1	A	300	GLN
1	B	79	GLN
1	B	104	ASN
1	B	217	GLN
1	B	300	GLN
1	C	104	ASN
1	C	117	ASN
1	C	217	GLN
1	C	299	ASN

5.3.3 RNA ⓘ

There are no RNA molecules in this entry.

5.4 Non-standard residues in protein, DNA, RNA chains ⓘ

There are no non-standard protein/DNA/RNA residues in this entry.

5.5 Carbohydrates ⓘ

There are no carbohydrates in this entry.

5.6 Ligand geometry ⓘ

3 ligands are modelled in this entry.

In the following table, the Counts columns list the number of bonds (or angles) for which Mogul statistics could be retrieved, the number of bonds (or angles) that are observed in the model and the number of bonds (or angles) that are defined in the chemical component dictionary. The Link column lists molecule types, if any, to which the group is linked. The Z score for a bond length (or angle) is the number of standard deviations the observed value is removed from the expected value. A bond length (or angle) with $|Z| > 2$ is considered an outlier worth inspection. RMSZ is the root-mean-square of all Z scores of the bond lengths (or angles).

Mol	Type	Chain	Res	Link	Bond lengths			Bond angles		
					Counts	RMSZ	# $ Z > 2$	Counts	RMSZ	# $ Z > 2$
2	1BL	A	501	-	37,42,42	1.02	2 (5%)	52,60,60	1.64	12 (23%)
2	1BL	B	501	-	37,42,42	1.13	1 (2%)	52,60,60	2.02	14 (26%)
2	1BL	C	501	-	37,42,42	1.05	2 (5%)	52,60,60	1.63	12 (23%)

In the following table, the Chirals column lists the number of chiral outliers, the number of chiral centers analysed, the number of these observed in the model and the number defined in the chemical component dictionary. Similar counts are reported in the Torsion and Rings columns. '-' means no outliers of that kind were identified.

Mol	Type	Chain	Res	Link	Chirals	Torsions	Rings
2	1BL	A	501	-	-	0/34/49/49	0/3/3/3
2	1BL	B	501	-	-	0/34/49/49	0/3/3/3
2	1BL	C	501	-	-	0/34/49/49	0/3/3/3

All (5) bond length outliers are listed below:

Mol	Chain	Res	Type	Atoms	Z	Observed(Å)	Ideal(Å)
2	B	501	1BL	C25-C14	-3.16	1.49	1.54
2	C	501	1BL	C25-C14	-2.13	1.50	1.54
2	A	501	1BL	C4-C5	2.11	1.41	1.37
2	C	501	1BL	C33-C34	2.20	1.42	1.39

Continued on next page...

Continued from previous page...

Mol	Chain	Res	Type	Atoms	Z	Observed(Å)	Ideal(Å)
2	A	501	1BL	C29-C14	2.21	1.57	1.54

All (38) bond angle outliers are listed below:

Mol	Chain	Res	Type	Atoms	Z	Observed(°)	Ideal(°)
2	B	501	1BL	C9-C10-N16	-7.12	102.36	110.14
2	B	501	1BL	C4-C5-C6	-4.08	118.13	123.52
2	C	501	1BL	C3-C9-C10	-4.08	107.00	113.48
2	A	501	1BL	C3-C9-C10	-4.03	107.07	113.48
2	A	501	1BL	O40-C11-C12	-4.00	100.83	110.27
2	B	501	1BL	C25-C14-C29	-3.62	104.72	109.27
2	B	501	1BL	C10-N16-C17	-3.25	117.58	123.61
2	C	501	1BL	C9-C10-N16	-2.84	107.04	110.14
2	B	501	1BL	C26-C25-C14	-2.47	109.11	112.46
2	C	501	1BL	C29-C14-N13	-2.47	104.98	109.62
2	C	501	1BL	O24-C17-C18	-2.44	117.77	121.98
2	C	501	1BL	C19-C18-C17	-2.39	107.58	113.27
2	A	501	1BL	C9-C10-N16	-2.38	107.53	110.14
2	B	501	1BL	O24-C17-C18	-2.21	118.17	121.98
2	C	501	1BL	O41-C20-C21	-2.20	104.70	111.44
2	C	501	1BL	O40-C11-C10	-2.10	104.35	109.21
2	A	501	1BL	O24-C17-C18	-2.10	118.36	121.98
2	B	501	1BL	C35-C30-C14	-2.06	118.00	120.63
2	B	501	1BL	C6-C1-C2	-2.03	120.84	123.52
2	A	501	1BL	C37-C36-C39	2.02	115.07	108.32
2	A	501	1BL	C18-C17-N16	2.03	119.15	115.83
2	A	501	1BL	C3-C2-C1	2.09	120.58	118.84
2	B	501	1BL	F8-C5-C6	2.11	121.02	118.22
2	B	501	1BL	C28-C29-C14	2.27	115.54	112.46
2	A	501	1BL	F7-C1-C2	2.31	121.30	118.22
2	B	501	1BL	C12-C11-C10	2.38	116.32	111.97
2	C	501	1BL	C3-C4-C5	2.45	120.87	118.84
2	A	501	1BL	F8-C5-C4	2.48	121.52	118.22
2	A	501	1BL	C38-C36-C34	2.56	116.73	110.37
2	A	501	1BL	C25-C14-N13	2.67	114.64	109.62
2	B	501	1BL	C5-C6-C1	2.74	120.25	116.07
2	C	501	1BL	C38-C36-C34	2.87	117.52	110.37
2	C	501	1BL	C28-C29-C14	3.10	116.66	112.46
2	B	501	1BL	C18-C17-N16	3.24	121.12	115.83
2	C	501	1BL	C25-C14-C29	3.28	113.39	109.27
2	A	501	1BL	C28-C29-C14	4.02	117.91	112.46
2	C	501	1BL	C3-C2-C1	4.07	122.22	118.84

Continued on next page...

Continued from previous page...

Mol	Chain	Res	Type	Atoms	Z	Observed(°)	Ideal(°)
2	B	501	1BL	C3-C4-C5	4.21	122.33	118.84

There are no chirality outliers.

There are no torsion outliers.

There are no ring outliers.

1 monomer is involved in 3 short contacts:

Mol	Chain	Res	Type	Clashes	Symm-Clashes
2	B	501	1BL	3	0

5.7 Other polymers [i](#)

There are no such residues in this entry.

5.8 Polymer linkage issues [i](#)

There are no chain breaks in this entry.

6 Fit of model and data

6.1 Protein, DNA and RNA chains

In the following table, the column labelled ‘#RSRZ> 2’ contains the number (and percentage) of RSRZ outliers, followed by percent RSRZ outliers for the chain as percentile scores relative to all X-ray entries and entries of similar resolution. The OWAB column contains the minimum, median, 95th percentile and maximum values of the occupancy-weighted average B-factor per residue. The column labelled ‘Q< 0.9’ lists the number of (and percentage) of residues with an average occupancy less than 0.9.

Mol	Chain	Analysed	<RSRZ>	#RSRZ>2	OWAB(Å ²)	Q<0.9
1	A	374/406 (92%)	0.26	12 (3%) 51 50	49, 65, 94, 109	0
1	B	375/406 (92%)	0.41	30 (8%) 15 14	47, 66, 94, 104	0
1	C	374/406 (92%)	0.39	24 (6%) 23 22	50, 65, 93, 103	0
All	All	1123/1218 (92%)	0.35	66 (5%) 26 25	47, 65, 94, 109	0

All (66) RSRZ outliers are listed below:

Mol	Chain	Res	Type	RSRZ
1	C	325	CYS	5.9
1	C	274	VAL	5.1
1	C	273	LEU	4.9
1	A	317	ASP	4.8
1	C	315	VAL	4.7
1	C	278	ALA	4.7
1	C	61	GLN	3.9
1	A	316	GLU	3.9
1	B	260	THR	3.9
1	C	324	ASP	3.8
1	C	371	PHE	3.8
1	B	277	GLN	3.8
1	C	277	GLN	3.7
1	B	392	ILE	3.7
1	C	276	TRP	3.7
1	C	390	TYR	3.5
1	C	151	HIS	3.5
1	B	276	TRP	3.3
1	B	274	VAL	3.2
1	C	160	LEU	3.1
1	B	279	GLY	3.0
1	A	61	GLN	3.0
1	B	151	HIS	3.0

Continued on next page...

Continued from previous page...

Mol	Chain	Res	Type	RSRZ
1	B	368	HIS	3.0
1	C	158	LEU	3.0
1	B	259	SER	2.9
1	B	61	GLN	2.9
1	A	390	TYR	2.9
1	A	315	VAL	2.8
1	A	271	GLU	2.8
1	B	275	CYS	2.8
1	C	326	TYR	2.8
1	B	371	PHE	2.7
1	B	280	THR	2.7
1	C	275	CYS	2.7
1	C	4	SER	2.6
1	C	349	VAL	2.6
1	C	279	GLY	2.6
1	C	62	LEU	2.5
1	B	273	LEU	2.5
1	B	252	LYS	2.5
1	B	324	ASP	2.5
1	B	315	VAL	2.4
1	A	127	LEU	2.4
1	B	268	TRP	2.4
1	C	370	GLU	2.3
1	B	166	PRO	2.3
1	B	256	ALA	2.3
1	A	117	ASN	2.3
1	B	326	TYR	2.3
1	B	325	CYS	2.3
1	B	158	LEU	2.2
1	B	263	PHE	2.2
1	B	323	ASP	2.2
1	A	4	SER	2.2
1	A	273	LEU	2.1
1	B	29	PRO	2.1
1	B	370	GLU	2.1
1	C	343	ILE	2.1
1	B	391	ASN	2.1
1	B	64	SER	2.1
1	C	233	VAL	2.1
1	A	391	ASN	2.1
1	C	365	CYS	2.0
1	A	125	LEU	2.0

Continued on next page...

Continued from previous page...

Mol	Chain	Res	Type	RSRZ
1	B	278	ALA	2.0

6.2 Non-standard residues in protein, DNA, RNA chains [i](#)

There are no non-standard protein/DNA/RNA residues in this entry.

6.3 Carbohydrates [i](#)

There are no carbohydrates in this entry.

6.4 Ligands [i](#)

In the following table, the Atoms column lists the number of modelled atoms in the group and the number defined in the chemical component dictionary. LLDF column lists the quality of electron density of the group with respect to its neighbouring residues in protein, DNA or RNA chains. The B-factors column lists the minimum, median, 95th percentile and maximum values of B factors of atoms in the group. The column labelled 'Q< 0.9' lists the number of atoms with occupancy less than 0.9.

Mol	Type	Chain	Res	Atoms	RSCC	RSR	LLDF	B-factors(\AA^2)	Q<0.9
2	1BL	C	501	40/40	0.97	0.16	0.37	49,54,66,71	0
2	1BL	A	501	40/40	0.96	0.14	-0.32	47,57,66,69	0
2	1BL	B	501	40/40	0.96	0.12	-0.79	44,58,66,71	0

6.5 Other polymers [i](#)

There are no such residues in this entry.