



Full wwPDB X-ray Structure Validation Report ⓘ

Feb 1, 2016 – 05:20 PM GMT

PDB ID : 4I1R
Title : Human MALT1 (caspase-IG3) in complex with thioridazine
Authors : Schlauderer, F.; Lammens, K.; Hopfner, K.P.
Deposited on : 2012-11-21
Resolution : 2.70 Å(reported)

This is a Full wwPDB X-ray Structure Validation Report for a publicly released PDB entry.
We welcome your comments at validation@mail.wwpdb.org
A user guide is available at
<http://wwpdb.org/validation/2016/XrayValidationReportHelp>
with specific help available everywhere you see the ⓘ symbol.

The following versions of software and data (see [references ⓘ](#)) were used in the production of this report:

MolProbity : 4.02b-467
Mogul : 1.7 (RC4), CSD as536be (2015)
Xtriage (Phenix) : 1.9-1692
EDS : rb-20026688
Percentile statistics : 20151230.v01 (using entries in the PDB archive December 30th 2015)
Refmac : 5.8.0135
CCP4 : 6.5.0
Ideal geometry (proteins) : Engh & Huber (2001)
Ideal geometry (DNA, RNA) : Parkinson et al. (1996)
Validation Pipeline (wwPDB-VP) : trunk26865

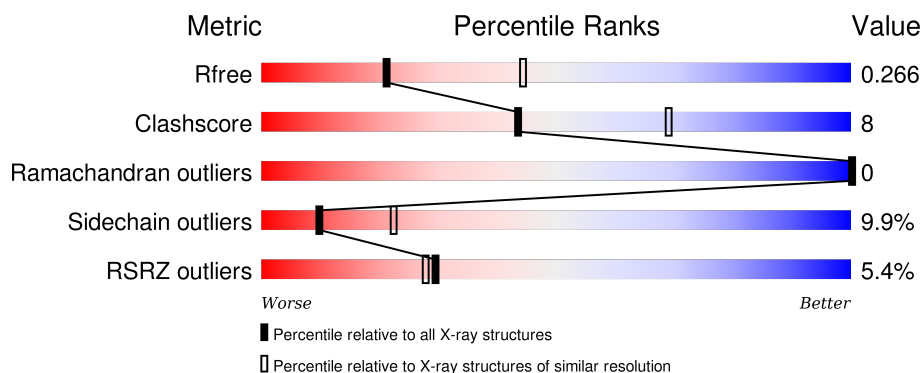
1 Overall quality at a glance

The following experimental techniques were used to determine the structure:

X-RAY DIFFRACTION

The reported resolution of this entry is 2.70 Å.

Percentile scores (ranging between 0-100) for global validation metrics of the entry are shown in the following graphic. The table shows the number of entries on which the scores are based.



Metric	Whole archive (#Entries)	Similar resolution (#Entries, resolution range(Å))
R_{free}	91344	2103 (2.70-2.70)
Clashscore	102246	2422 (2.70-2.70)
Ramachandran outliers	100387	2382 (2.70-2.70)
Sidechain outliers	100360	2382 (2.70-2.70)
RSRZ outliers	91569	2107 (2.70-2.70)

The table below summarises the geometric issues observed across the polymeric chains and their fit to the electron density. The red, orange, yellow and green segments on the lower bar indicate the fraction of residues that contain outliers for ≥ 3 , 2, 1 and 0 types of geometric quality criteria. A grey segment represents the fraction of residues that are not modelled. The numeric value for each fraction is indicated below the corresponding segment, with a dot representing fractions $\leq 5\%$. The upper red bar (where present) indicates the fraction of residues that have poor fit to the electron density. The numeric value is given above the bar.

Mol	Chain	Length	Quality of chain
1	A	388	<div> <div>5%</div> <div>70%</div> <div>19%</div> <div>• 9%</div> </div>

2 Entry composition [i](#)

There are 3 unique types of molecules in this entry. The entry contains 2857 atoms, of which 0 are hydrogens and 0 are deuteriums.

In the tables below, the ZeroOcc column contains the number of atoms modelled with zero occupancy, the AltConf column contains the number of residues with at least one atom in alternate conformation and the Trace column contains the number of residues modelled with at most 2 atoms.

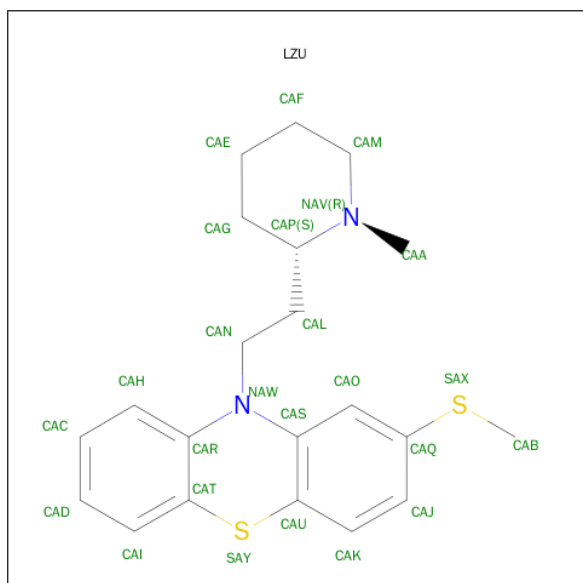
- Molecule 1 is a protein called Mucosa-associated lymphoid tissue lymphoma translocation protein 1.

Mol	Chain	Residues	Atoms					ZeroOcc	AltConf	Trace
1	A	353	Total	C	N	O	S	151	1	0
			2806	1798	460	526	22			

There are 7 discrepancies between the modelled and reference sequences:

Chain	Residue	Modelled	Actual	Comment	Reference
A	338	MET	-	INITIATING METHIONINE	UNP Q9UDY8
A	720	HIS	-	EXPRESSION TAG	UNP Q9UDY8
A	721	HIS	-	EXPRESSION TAG	UNP Q9UDY8
A	722	HIS	-	EXPRESSION TAG	UNP Q9UDY8
A	723	HIS	-	EXPRESSION TAG	UNP Q9UDY8
A	724	HIS	-	EXPRESSION TAG	UNP Q9UDY8
A	725	HIS	-	EXPRESSION TAG	UNP Q9UDY8

- Molecule 2 is 10-{2-[(2S)-1-METHYLPYPERIDIN-2-YL]ETHYL}-2-(METHYLSULFANYL)-10H-PHENOTHIAZINE (three-letter code: LZU) (formula: C₂₁H₂₆N₂S₂).



Mol	Chain	Residues	Atoms				ZeroOcc	AltConf
2	A	1	Total	C	N	S	0	0
			25	21	2	2		

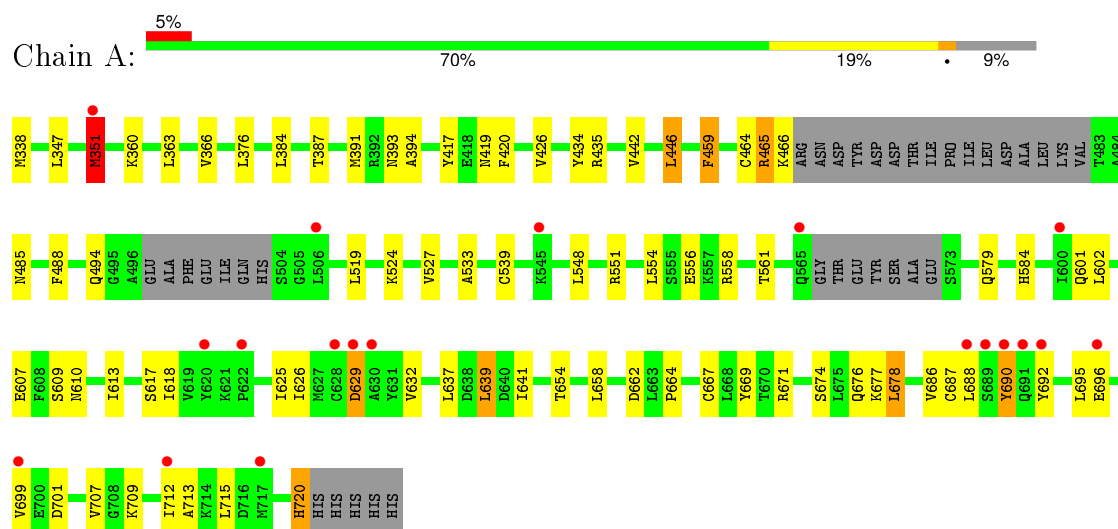
- Molecule 3 is water.

Mol	Chain	Residues	Atoms		ZeroOcc	AltConf
3	A	26	Total	O	0	0
			26	26		

3 Residue-property plots [i](#)

These plots are drawn for all protein, RNA and DNA chains in the entry. The first graphic for a chain summarises the proportions of errors displayed in the second graphic. The second graphic shows the sequence view annotated by issues in geometry and electron density. Residues are color-coded according to the number of geometric quality criteria for which they contain at least one outlier: green = 0, yellow = 1, orange = 2 and red = 3 or more. A red dot above a residue indicates a poor fit to the electron density ($\text{RSRZ} > 2$). Stretches of 2 or more consecutive residues without any outlier are shown as a green connector. Residues present in the sample, but not in the model, are shown in grey.

- Molecule 1: Mucosa-associated lymphoid tissue lymphoma translocation protein 1



4 Data and refinement statistics

Property	Value	Source
Space group	C 1 2 1	Depositor
Cell constants a, b, c, α , β , γ	94.84Å 70.61Å 57.52Å 90.00° 93.63° 90.00°	Depositor
Resolution (Å)	41.09 – 2.70 41.09 – 2.70	Depositor EDS
% Data completeness (in resolution range)	98.8 (41.09-2.70) 98.8 (41.09-2.70)	Depositor EDS
R_{merge}	(Not available)	Depositor
R_{sym}	(Not available)	Depositor
$\langle I/\sigma(I) \rangle$ ¹	1.75 (at 2.69Å)	Xtriage
Refinement program	BUSTER 2.11.2	Depositor
R, R_{free}	0.201 , 0.249 0.213 , 0.266	Depositor DCC
R_{free} test set	1020 reflections (10.89%)	DCC
Wilson B-factor (Å ²)	73.8	Xtriage
Anisotropy	0.322	Xtriage
Bulk solvent k_{sol} (e/Å ³), B_{sol} (Å ²)	0.29 , 80.5	EDS
Estimated twinning fraction	No twinning to report.	Xtriage
L-test for twinning ²	$\langle L \rangle = 0.48$, $\langle L^2 \rangle = 0.31$	Xtriage
Outliers	0 of 10386 reflections	Xtriage
F_o, F_c correlation	0.95	EDS
Total number of atoms	2857	wwPDB-VP
Average B, all atoms (Å ²)	105.0	wwPDB-VP

Xtriage's analysis on translational NCS is as follows: *The largest off-origin peak in the Patterson function is 6.94% of the height of the origin peak. No significant pseudotranslation is detected.*

¹Intensities estimated from amplitudes.

²Theoretical values of $\langle |L| \rangle$, $\langle L^2 \rangle$ for acentric reflections are 0.5, 0.375 respectively for untwinned datasets, and 0.333, 0.2 for perfectly twinned datasets.

5 Model quality [i](#)

5.1 Standard geometry [i](#)

Bond lengths and bond angles in the following residue types are not validated in this section: LZU

The Z score for a bond length (or angle) is the number of standard deviations the observed value is removed from the expected value. A bond length (or angle) with $|Z| > 5$ is considered an outlier worth inspection. RMSZ is the root-mean-square of all Z scores of the bond lengths (or angles).

Mol	Chain	Bond lengths		Bond angles	
		RMSZ	$\# Z > 5$	RMSZ	$\# Z > 5$
1	A	0.46	0/2858	0.73	1/3856 (0.0%)

There are no bond length outliers.

All (1) bond angle outliers are listed below:

Mol	Chain	Res	Type	Atoms	Z	Observed($^{\circ}$)	Ideal($^{\circ}$)
1	A	351	MET	CB-CG-SD	-5.25	96.66	112.40

There are no chirality outliers.

There are no planarity outliers.

5.2 Too-close contacts [i](#)

In the following table, the Non-H and H(model) columns list the number of non-hydrogen atoms and hydrogen atoms in the chain respectively. The H(added) column lists the number of hydrogen atoms added and optimized by MolProbity. The Clashes column lists the number of clashes within the asymmetric unit, whereas Symm-Clashes lists symmetry related clashes.

Mol	Chain	Non-H	H(model)	H(added)	Clashes	Symm-Clashes
1	A	2806	0	2845	42	0
2	A	25	0	26	2	0
3	A	26	0	0	1	0
All	All	2857	0	2871	43	0

The all-atom clashscore is defined as the number of clashes found per 1000 atoms (including hydrogen atoms). The all-atom clashscore for this structure is 8.

All (43) close contacts within the same asymmetric unit are listed below, sorted by their clash magnitude.

Atom-1	Atom-2	Interatomic distance (Å)	Clash overlap (Å)
1:A:654:THR:HG21	1:A:671:ARG:CB	2.14	0.76
1:A:417:TYR:HA	1:A:466:LYS:HG3	1.66	0.76
1:A:654:THR:HG21	1:A:671:ARG:HB3	1.71	0.70
1:A:351:MET:CE	1:A:363:LEU:HB2	2.26	0.65
1:A:654:THR:HG21	1:A:671:ARG:HB2	1.80	0.64
1:A:618:ILE:HD11	1:A:629:ASP:HA	1.84	0.59
1:A:556:GLU:HG3	1:A:558:ARG:HE	1.71	0.56
1:A:351:MET:HE1	1:A:363:LEU:HB2	1.87	0.55
1:A:376:LEU:CD2	1:A:561:THR:HG22	2.36	0.55
1:A:351:MET:HE1	1:A:363:LEU:CB	2.37	0.54
1:A:376:LEU:HD22	1:A:561:THR:HG22	1.90	0.54
1:A:674:SER:HB2	1:A:677:LYS:HD2	1.88	0.54
1:A:584:HIS:HE1	1:A:609:SER:OG	1.91	0.53
1:A:393:ASN:HA	1:A:720:HIS:HE1	1.75	0.52
1:A:485:ASN:HD22	1:A:554:LEU:HA	1.74	0.51
1:A:442:VAL:HG12	1:A:446:LEU:HD22	1.94	0.49
1:A:485:ASN:HD22	1:A:554:LEU:HD12	1.78	0.49
1:A:394:ALA:HA	2:A:801:LZU:H8	1.95	0.49
1:A:426:VAL:HG11	1:A:434:TYR:CE1	2.48	0.49
1:A:465:ARG:O	1:A:466:LYS:HG2	2.14	0.48
1:A:632:VAL:HG12	1:A:686:VAL:HG22	1.97	0.46
1:A:351:MET:CE	1:A:363:LEU:CB	2.93	0.46
1:A:613:ILE:HD13	1:A:658:LEU:HD12	1.95	0.46
1:A:387:THR:O	1:A:391:MET:HG3	2.16	0.46
1:A:607:GLU:HG3	1:A:658:LEU:HG	1.98	0.46
1:A:347:LEU:HB3	1:A:366:VAL:HG13	1.97	0.46
1:A:464:CYS:HB2	1:A:494:GLN:HG3	1.98	0.45
1:A:625:ILE:HD12	1:A:690:TYR:HD2	1.81	0.45
1:A:338:MET:N	3:A:909:HOH:O	2.50	0.45
1:A:488:PHE:HB3	1:A:551:ARG:HB2	1.98	0.45
1:A:664:PRO:O	1:A:669:TYR:OH	2.33	0.45
1:A:351:MET:CE	1:A:360:LYS:O	2.65	0.44
2:A:801:LZU:H23	2:A:801:LZU:H15	1.72	0.43
1:A:446:LEU:HD13	1:A:459:PHE:HD2	1.84	0.43
1:A:524:LYS:HB3	1:A:527:VAL:HG23	2.00	0.43
1:A:610:ASN:HB2	1:A:676:GLN:OE1	2.19	0.42
1:A:393:ASN:HA	1:A:720:HIS:CE1	2.54	0.42
1:A:690:TYR:H	1:A:690:TYR:HD1	1.68	0.42
1:A:617:SER:HB3	1:A:667:CYS:SG	2.59	0.41
1:A:639:LEU:HD22	1:A:674:SER:O	2.19	0.41
1:A:533:ALA:HB2	1:A:548:LEU:HD23	2.01	0.41
1:A:688:LEU:HD12	1:A:701:ASP:HB3	2.03	0.41

Continued on next page...

Continued from previous page...

Atom-1	Atom-2	Interatomic distance (Å)	Clash overlap (Å)
1:A:678:LEU:HD22	1:A:713:ALA:HB1	2.03	0.40

There are no symmetry-related clashes.

5.3 Torsion angles [i](#)

5.3.1 Protein backbone [i](#)

In the following table, the Percentiles column shows the percent Ramachandran outliers of the chain as a percentile score with respect to all X-ray entries followed by that with respect to entries of similar resolution.

The Analysed column shows the number of residues for which the backbone conformation was analysed, and the total number of residues.

Mol	Chain	Analysed	Favoured	Allowed	Outliers	Percentiles	
1	A	346/388 (89%)	333 (96%)	13 (4%)	0	100	100

There are no Ramachandran outliers to report.

5.3.2 Protein sidechains [i](#)

In the following table, the Percentiles column shows the percent sidechain outliers of the chain as a percentile score with respect to all X-ray entries followed by that with respect to entries of similar resolution.

The Analysed column shows the number of residues for which the sidechain conformation was analysed, and the total number of residues.

Mol	Chain	Analysed	Rotameric	Outliers	Percentiles	
1	A	315/345 (91%)	284 (90%)	31 (10%)	10	23

All (31) residues with a non-rotameric sidechain are listed below:

Mol	Chain	Res	Type
1	A	351	MET
1	A	384	LEU
1	A	419	ASN
1	A	420	PHE
1	A	435	ARG

Continued on next page...

Continued from previous page...

Mol	Chain	Res	Type
1	A	446	LEU
1	A	459	PHE
1	A	465	ARG
1	A	519	LEU
1	A	539	CYS
1	A	579	GLN
1	A	601	GLN
1	A	602	LEU
1	A	626	ILE
1	A	629	ASP
1	A	637	LEU
1	A	639	LEU
1	A	641	ILE
1	A	662	ASP
1	A	678	LEU
1	A	687	CYS
1	A	690	TYR
1	A	692	TYR
1	A	695	LEU
1	A	696	GLU
1	A	699	VAL
1	A	707	VAL
1	A	709	LYS
1	A	712	ILE
1	A	715	LEU
1	A	720	HIS

Some sidechains can be flipped to improve hydrogen bonding and reduce clashes. All (4) such sidechains are listed below:

Mol	Chain	Res	Type
1	A	438	ASN
1	A	485	ASN
1	A	584	HIS
1	A	703	GLN

5.3.3 RNA ⓘ

There are no RNA molecules in this entry.

5.4 Non-standard residues in protein, DNA, RNA chains [i](#)

There are no non-standard protein/DNA/RNA residues in this entry.

5.5 Carbohydrates [i](#)

There are no carbohydrates in this entry.

5.6 Ligand geometry [i](#)

1 ligand is modelled in this entry.

In the following table, the Counts columns list the number of bonds (or angles) for which Mogul statistics could be retrieved, the number of bonds (or angles) that are observed in the model and the number of bonds (or angles) that are defined in the chemical component dictionary. The Link column lists molecule types, if any, to which the group is linked. The Z score for a bond length (or angle) is the number of standard deviations the observed value is removed from the expected value. A bond length (or angle) with $|Z| > 2$ is considered an outlier worth inspection. RMSZ is the root-mean-square of all Z scores of the bond lengths (or angles).

Mol	Type	Chain	Res	Link	Bond lengths			Bond angles		
					Counts	RMSZ	# $ Z > 2$	Counts	RMSZ	# $ Z > 2$
2	LZU	A	801	-	27,28,28	1.99	9 (33%)	36,39,39	5.05	12 (33%)

In the following table, the Chirals column lists the number of chiral outliers, the number of chiral centers analysed, the number of these observed in the model and the number defined in the chemical component dictionary. Similar counts are reported in the Torsion and Rings columns. '-' means no outliers of that kind were identified.

Mol	Type	Chain	Res	Link	Chirals	Torsions	Rings
2	LZU	A	801	-	-	0/7/30/30	0/4/4/4

All (9) bond length outliers are listed below:

Mol	Chain	Res	Type	Atoms	Z	Observed(Å)	Ideal(Å)
2	A	801	LZU	CAS-CAU	-2.69	1.36	1.40
2	A	801	LZU	CAR-CAT	-2.56	1.37	1.40
2	A	801	LZU	CAR-NAW	2.13	1.44	1.40
2	A	801	LZU	CAH-CAR	2.43	1.43	1.39
2	A	801	LZU	CAS-NAW	2.55	1.44	1.40
2	A	801	LZU	CAL-CAN	2.94	1.59	1.52
2	A	801	LZU	CAO-CAS	3.02	1.44	1.39
2	A	801	LZU	CAI-CAT	3.87	1.47	1.39

Continued on next page...

Continued from previous page...

Mol	Chain	Res	Type	Atoms	Z	Observed(Å)	Ideal(Å)
2	A	801	LZU	CAK-CAU	4.53	1.48	1.39

All (12) bond angle outliers are listed below:

Mol	Chain	Res	Type	Atoms	Z	Observed(°)	Ideal(°)
2	A	801	LZU	CAA-NAV-CAM	-9.43	93.93	110.53
2	A	801	LZU	CAH-CAR-NAW	-4.69	115.66	121.85
2	A	801	LZU	CAO-CAS-NAW	-3.88	116.91	121.75
2	A	801	LZU	CAN-NAW-CAR	-3.42	114.42	119.01
2	A	801	LZU	CAT-CAR-NAW	2.01	122.91	119.84
2	A	801	LZU	CAS-NAW-CAR	2.21	125.31	119.97
2	A	801	LZU	CAF-CAE-CAG	2.23	116.11	111.44
2	A	801	LZU	CAB-SAX-CAQ	2.31	109.72	103.36
2	A	801	LZU	CAU-CAS-NAW	2.63	123.87	119.84
2	A	801	LZU	CAI-CAT-SAY	2.97	124.25	118.37
2	A	801	LZU	CAU-SAY-CAT	3.42	109.29	100.69
2	A	801	LZU	CAA-NAV-CAP	26.51	142.00	112.46

There are no chirality outliers.

There are no torsion outliers.

There are no ring outliers.

1 monomer is involved in 2 short contacts:

Mol	Chain	Res	Type	Clashes	Symm-Clashes
2	A	801	LZU	2	0

5.7 Other polymers [i](#)

There are no such residues in this entry.

5.8 Polymer linkage issues [i](#)

There are no chain breaks in this entry.

6 Fit of model and data ⓘ

6.1 Protein, DNA and RNA chains ⓘ

In the following table, the column labelled ‘#RSRZ> 2’ contains the number (and percentage) of RSRZ outliers, followed by percent RSRZ outliers for the chain as percentile scores relative to all X-ray entries and entries of similar resolution. The OWAB column contains the minimum, median, 95th percentile and maximum values of the occupancy-weighted average B-factor per residue. The column labelled ‘Q< 0.9’ lists the number of (and percentage) of residues with an average occupancy less than 0.9.

Mol	Chain	Analysed	<RSRZ>	#RSRZ>2		OWAB(Å ²)	Q<0.9
1	A	353/388 (90%)	0.14	19 (5%)	29 28	61, 94, 172, 278	39 (11%)

All (19) RSRZ outliers are listed below:

Mol	Chain	Res	Type	RSRZ
1	A	630	ALA	6.2
1	A	688	LEU	3.5
1	A	691	GLN	3.4
1	A	629	ASP	3.1
1	A	692	TYR	3.1
1	A	628	CYS	3.1
1	A	600	ILE	3.1
1	A	565	GLN	2.8
1	A	690	TYR	2.7
1	A	696	GLU	2.7
1	A	689	SER	2.6
1	A	717	MET	2.4
1	A	622	PRO	2.4
1	A	351	MET	2.3
1	A	712	ILE	2.1
1	A	699	VAL	2.1
1	A	545	LYS	2.1
1	A	620	TYR	2.0
1	A	506	LEU	2.0

6.2 Non-standard residues in protein, DNA, RNA chains ⓘ

There are no non-standard protein/DNA/RNA residues in this entry.

6.3 Carbohydrates [i](#)

There are no carbohydrates in this entry.

6.4 Ligands [i](#)

In the following table, the Atoms column lists the number of modelled atoms in the group and the number defined in the chemical component dictionary. LLDF column lists the quality of electron density of the group with respect to its neighbouring residues in protein, DNA or RNA chains. The B-factors column lists the minimum, median, 95th percentile and maximum values of B factors of atoms in the group. The column labelled 'Q< 0.9' lists the number of atoms with occupancy less than 0.9.

Mol	Type	Chain	Res	Atoms	RSCC	RSR	LLDF	B-factors(\AA^2)	Q<0.9
2	LZU	A	801	25/25	0.93	0.21	0.37	71,76,93,94	0

6.5 Other polymers [i](#)

There are no such residues in this entry.