



Full wwPDB X-ray Structure Validation Report ⓘ

Feb 1, 2016 – 05:22 PM GMT

PDB ID : 4I2R
Title : 2.15 Angstroms X-ray crystal structure of NAD- and alternative substrate-bound 2-aminomuconate 6-semialdehyde dehydrogenase from *Pseudomonas fluorescens*
Authors : Huo, L.; Davis, I.; Chen, L.; Liu, A.
Deposited on : 2012-11-22
Resolution : 2.15 Å(reported)

This is a Full wwPDB X-ray Structure Validation Report for a publicly released PDB entry.
We welcome your comments at validation@mail.wwpdb.org
A user guide is available at
<http://wwpdb.org/validation/2016/XrayValidationReportHelp>
with specific help available everywhere you see the ⓘ symbol.

The following versions of software and data (see [references ⓘ](#)) were used in the production of this report:

MolProbity : 4.02b-467
Mogul : 1.7 (RC4), CSD as536be (2015)
Xtriage (Phenix) : 1.9-1692
EDS : rb-20026688
Percentile statistics : 20151230.v01 (using entries in the PDB archive December 30th 2015)
Refmac : 5.8.0135
CCP4 : 6.5.0
Ideal geometry (proteins) : Engh & Huber (2001)
Ideal geometry (DNA, RNA) : Parkinson et al. (1996)
Validation Pipeline (wwPDB-VP) : trunk26865

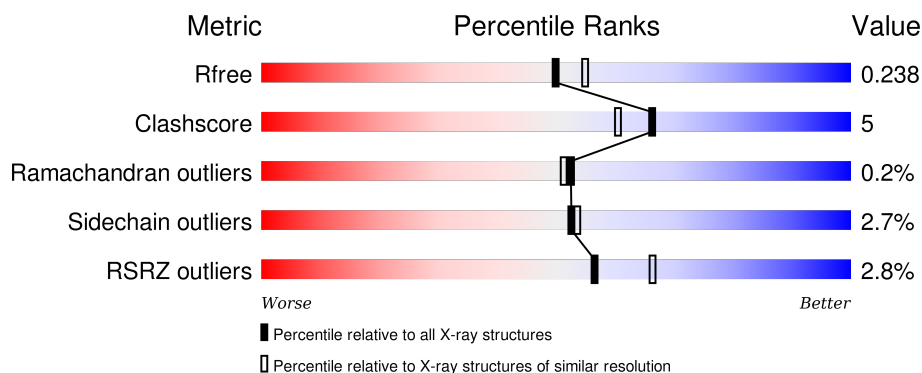
1 Overall quality at a glance

The following experimental techniques were used to determine the structure:

X-RAY DIFFRACTION

The reported resolution of this entry is 2.15 Å.

Percentile scores (ranging between 0-100) for global validation metrics of the entry are shown in the following graphic. The table shows the number of entries on which the scores are based.



Metric	Whole archive (#Entries)	Similar resolution (#Entries, resolution range(Å))
R_{free}	91344	1045 (2.16-2.16)
Clashscore	102246	1152 (2.16-2.16)
Ramachandran outliers	100387	1131 (2.16-2.16)
Sidechain outliers	100360	1131 (2.16-2.16)
RSRZ outliers	91569	1050 (2.16-2.16)

The table below summarises the geometric issues observed across the polymeric chains and their fit to the electron density. The red, orange, yellow and green segments on the lower bar indicate the fraction of residues that contain outliers for ≥ 3 , 2, 1 and 0 types of geometric quality criteria. A grey segment represents the fraction of residues that are not modelled. The numeric value for each fraction is indicated below the corresponding segment, with a dot representing fractions $\leq 5\%$. The upper red bar (where present) indicates the fraction of residues that have poor fit to the electron density. The numeric value is given above the bar.

Mol	Chain	Length	Quality of chain
1	A	500	<div> <div>3%</div> <div>89%</div> <div>7%</div> <div>• •</div> </div>
1	B	500	<div> <div>%</div> <div>87%</div> <div>8%</div> <div>• •</div> </div>
1	C	500	<div> <div>5%</div> <div>86%</div> <div>9%</div> <div>• •</div> </div>
1	D	500	<div> <div>%</div> <div>89%</div> <div>6%</div> <div>• •</div> </div>

The following table lists non-polymeric compounds, carbohydrate monomers and non-standard

residues in protein, DNA, RNA chains that are outliers for geometric or electron-density-fit criteria:

Mol	Type	Chain	Res	Chirality	Geometry	Clashes	Electron density
3	NA	C	602	-	-	-	X
4	6OH	A	603	-	-	X	-
4	6OH	B	603	-	-	X	-
4	6OH	C	603	-	-	X	-
4	6OH	D	603	-	-	X	-

2 Entry composition [i](#)

There are 5 unique types of molecules in this entry. The entry contains 15703 atoms, of which 0 are hydrogens and 0 are deuteriums.

In the tables below, the ZeroOcc column contains the number of atoms modelled with zero occupancy, the AltConf column contains the number of residues with at least one atom in alternate conformation and the Trace column contains the number of residues modelled with at most 2 atoms.

- Molecule 1 is a protein called 2-aminomuconate 6-semialdehyde dehydrogenase.

Mol	Chain	Residues	Atoms					ZeroOcc	AltConf	Trace
1	A	483	Total	C	N	O	S	0	0	0
			3671	2321	637	701	12			
1	B	483	Total	C	N	O	S	0	0	0
			3671	2321	637	701	12			
1	C	483	Total	C	N	O	S	0	0	0
			3671	2321	637	701	12			
1	D	483	Total	C	N	O	S	0	0	0
			3671	2321	637	701	12			

- Molecule 2 is NICOTINAMIDE-ADENINE-DINUCLEOTIDE (three-letter code: NAD) (formula: $C_{21}H_{27}N_7O_{14}P_2$).



Mol	Chain	Residues	Atoms					ZeroOcc	AltConf
2	A	1	Total	C	N	O	P	0	0
			44	21	7	14	2		
2	B	1	Total	C	N	O	P	0	0
			44	21	7	14	2		

Continued on next page...

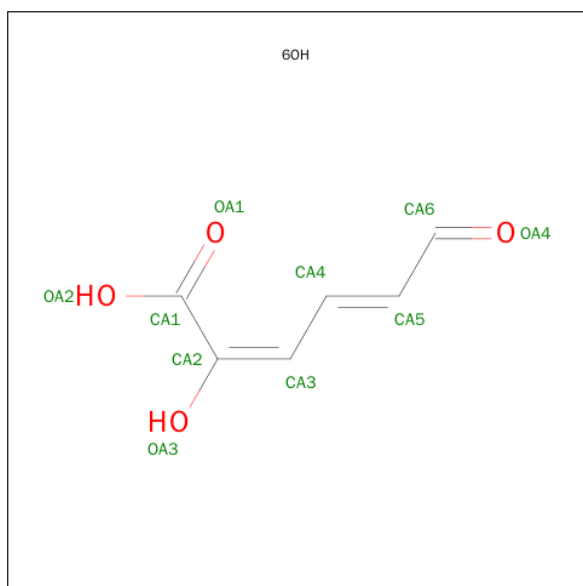
Continued from previous page...

Mol	Chain	Residues	Atoms					ZeroOcc	AltConf
2	C	1	Total	C	N	O	P	0	0
			44	21	7	14	2		
2	D	1	Total	C	N	O	P	0	0
			44	21	7	14	2		

- Molecule 3 is SODIUM ION (three-letter code: NA) (formula: Na).

Mol	Chain	Residues	Atoms		ZeroOcc	AltConf
3	B	1	Total	Na	0	0
			1	1		
3	A	1	Total	Na	0	0
			1	1		
3	D	1	Total	Na	0	0
			1	1		
3	C	1	Total	Na	0	0
			1	1		

- Molecule 4 is (2E,4E)-2-HYDROXY-6-OXOHXA-2,4-DIENOIC ACID (three-letter code: 6OH) (formula: C₆H₆O₄).



Mol	Chain	Residues	Atoms			ZeroOcc	AltConf
4	A	1	Total	C	O	0	0
			10	6	4		
4	B	1	Total	C	O	0	0
			10	6	4		
4	C	1	Total	C	O	0	0
			10	6	4		

Continued on next page...

Continued from previous page...

Mol	Chain	Residues	Atoms			ZeroOcc	AltConf
4	D	1	Total	C	O	0	0
			10	6	4		

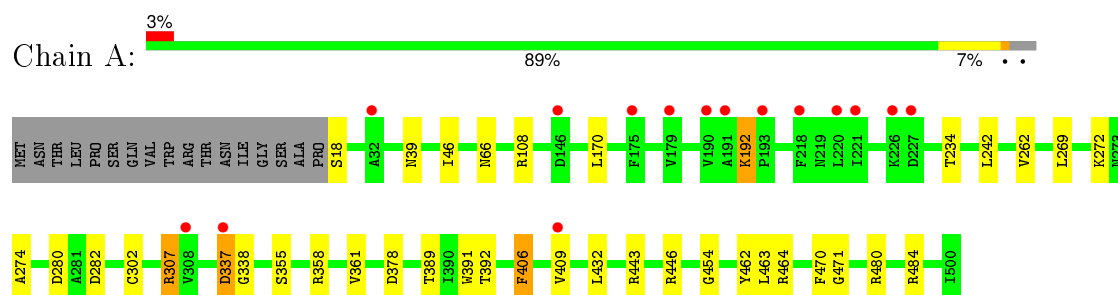
- Molecule 5 is water.

Mol	Chain	Residues	Atoms		ZeroOcc	AltConf
5	A	209	Total	O	0	0
			209	209		
5	B	262	Total	O	0	0
			262	262		
5	C	136	Total	O	0	0
			136	136		
5	D	192	Total	O	0	0
			192	192		

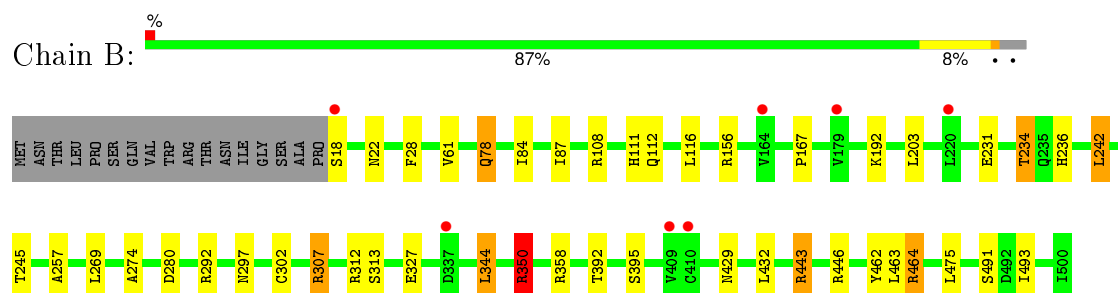
3 Residue-property plots [i](#)

These plots are drawn for all protein, RNA and DNA chains in the entry. The first graphic for a chain summarises the proportions of errors displayed in the second graphic. The second graphic shows the sequence view annotated by issues in geometry and electron density. Residues are color-coded according to the number of geometric quality criteria for which they contain at least one outlier: green = 0, yellow = 1, orange = 2 and red = 3 or more. A red dot above a residue indicates a poor fit to the electron density ($RSRZ > 2$). Stretches of 2 or more consecutive residues without any outlier are shown as a green connector. Residues present in the sample, but not in the model, are shown in grey.

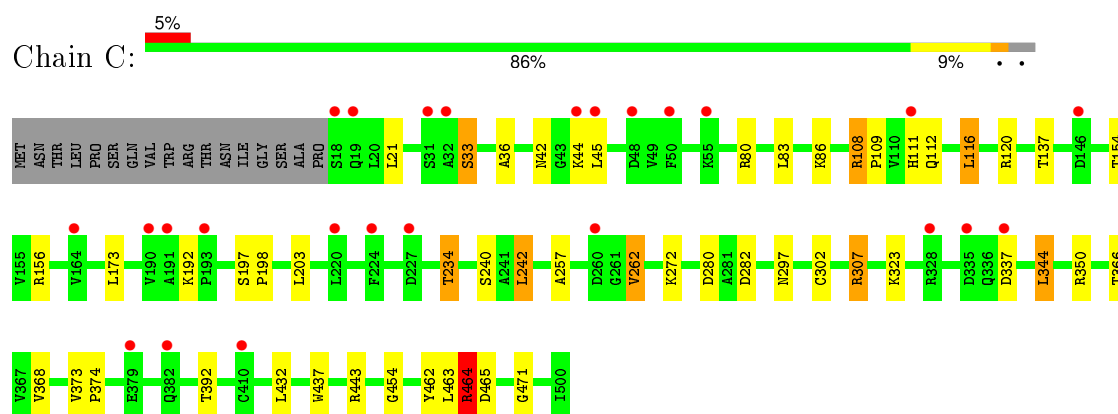
- Molecule 1: 2-aminomuconate 6-semialdehyde dehydrogenase



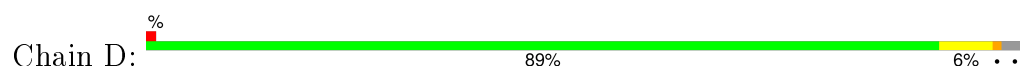
- Molecule 1: 2-aminomuconate 6-semialdehyde dehydrogenase

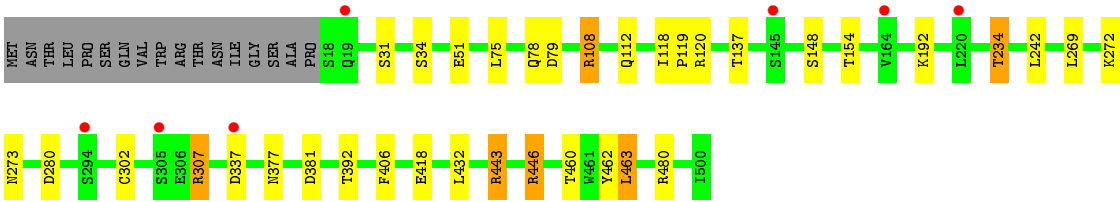


- Molecule 1: 2-aminomuconate 6-semialdehyde dehydrogenase



- Molecule 1: 2-aminomuconate 6-semialdehyde dehydrogenase





4 Data and refinement statistics

Property	Value	Source
Space group	P 21 21 21	Depositor
Cell constants a, b, c, α , β , γ	88.57Å 142.72Å 175.01Å 90.00° 90.00° 90.00°	Depositor
Resolution (Å)	27.47 – 2.15 27.45 – 2.15	Depositor EDS
% Data completeness (in resolution range)	99.7 (27.47-2.15) 99.7 (27.45-2.15)	Depositor EDS
R_{merge}	0.12	Depositor
R_{sym}	(Not available)	Depositor
$\langle I/\sigma(I) \rangle$ ¹	2.71 (at 2.16Å)	Xtriage
Refinement program	REFMAC 5.7.0029	Depositor
R, R_{free}	0.180 , 0.237 0.187 , 0.238	Depositor DCC
R_{free} test set	6043 reflections (5.30%)	DCC
Wilson B-factor (Å ²)	36.9	Xtriage
Anisotropy	0.066	Xtriage
Bulk solvent k_{sol} (e/Å ³), B_{sol} (Å ²)	0.33 , 39.3	EDS
Estimated twinning fraction	No twinning to report.	Xtriage
L-test for twinning ²	$\langle L \rangle = 0.48$, $\langle L^2 \rangle = 0.31$	Xtriage
Outliers	2 of 120152 reflections (0.002%)	Xtriage
F_o, F_c correlation	0.96	EDS
Total number of atoms	15703	wwPDB-VP
Average B, all atoms (Å ²)	40.0	wwPDB-VP

Xtriage's analysis on translational NCS is as follows: *The largest off-origin peak in the Patterson function is 6.26% of the height of the origin peak. No significant pseudotranslation is detected.*

¹Intensities estimated from amplitudes.

²Theoretical values of $\langle |L| \rangle$, $\langle L^2 \rangle$ for acentric reflections are 0.5, 0.375 respectively for untwinned datasets, and 0.333, 0.2 for perfectly twinned datasets.

5 Model quality [i](#)

5.1 Standard geometry [i](#)

Bond lengths and bond angles in the following residue types are not validated in this section: NA, 6OH, NAD

The Z score for a bond length (or angle) is the number of standard deviations the observed value is removed from the expected value. A bond length (or angle) with $|Z| > 5$ is considered an outlier worth inspection. RMSZ is the root-mean-square of all Z scores of the bond lengths (or angles).

Mol	Chain	Bond lengths		Bond angles	
		RMSZ	# $ Z > 5$	RMSZ	# $ Z > 5$
1	A	0.87	0/3750	0.89	5/5098 (0.1%)
1	B	0.89	0/3750	0.93	10/5098 (0.2%)
1	C	0.76	1/3750 (0.0%)	0.80	3/5098 (0.1%)
1	D	0.86	1/3750 (0.0%)	0.93	7/5098 (0.1%)
All	All	0.85	2/15000 (0.0%)	0.89	25/20392 (0.1%)

All (2) bond length outliers are listed below:

Mol	Chain	Res	Type	Atoms	Z	Observed(Å)	Ideal(Å)
1	C	437	TRP	CB-CG	-5.21	1.40	1.50
1	D	446	ARG	CD-NE	-5.03	1.37	1.46

All (25) bond angle outliers are listed below:

Mol	Chain	Res	Type	Atoms	Z	Observed(°)	Ideal(°)
1	D	446	ARG	NE-CZ-NH2	-14.87	112.86	120.30
1	D	446	ARG	NE-CZ-NH1	12.48	126.54	120.30
1	A	307	ARG	NE-CZ-NH2	-11.68	114.46	120.30
1	B	307	ARG	NE-CZ-NH2	-10.74	114.93	120.30
1	A	307	ARG	NE-CZ-NH1	10.09	125.34	120.30
1	D	307	ARG	NE-CZ-NH2	-9.29	115.65	120.30
1	B	307	ARG	NE-CZ-NH1	8.26	124.43	120.30
1	B	350	ARG	NE-CZ-NH2	-7.59	116.50	120.30
1	D	307	ARG	NE-CZ-NH1	7.41	124.01	120.30
1	B	443	ARG	NE-CZ-NH2	-7.28	116.66	120.30
1	B	292	ARG	NE-CZ-NH1	7.09	123.84	120.30
1	D	443	ARG	NE-CZ-NH1	6.56	123.58	120.30
1	B	443	ARG	NE-CZ-NH1	6.29	123.44	120.30
1	A	446	ARG	NE-CZ-NH2	-6.05	117.28	120.30
1	B	358	ARG	NE-CZ-NH2	-6.05	117.28	120.30

Continued on next page...

Continued from previous page...

Mol	Chain	Res	Type	Atoms	Z	Observed(°)	Ideal(°)
1	B	292	ARG	NE-CZ-NH2	-5.81	117.40	120.30
1	D	443	ARG	NE-CZ-NH2	-5.80	117.40	120.30
1	C	464	ARG	NE-CZ-NH1	-5.76	117.42	120.30
1	B	358	ARG	NE-CZ-NH1	5.71	123.15	120.30
1	C	307	ARG	NE-CZ-NH2	-5.52	117.54	120.30
1	A	358	ARG	NE-CZ-NH1	5.46	123.03	120.30
1	D	108	ARG	NE-CZ-NH2	-5.35	117.62	120.30
1	C	108	ARG	NE-CZ-NH1	5.32	122.96	120.30
1	B	446	ARG	NE-CZ-NH1	5.29	122.94	120.30
1	A	358	ARG	NE-CZ-NH2	-5.19	117.71	120.30

There are no chirality outliers.

There are no planarity outliers.

5.2 Too-close contacts

In the following table, the Non-H and H(model) columns list the number of non-hydrogen atoms and hydrogen atoms in the chain respectively. The H(added) column lists the number of hydrogen atoms added and optimized by MolProbity. The Clashes column lists the number of clashes within the asymmetric unit, whereas Symm-Clashes lists symmetry related clashes.

Mol	Chain	Non-H	H(model)	H(added)	Clashes	Symm-Clashes
1	A	3671	0	3605	30	0
1	B	3671	0	3605	30	0
1	C	3671	0	3605	41	0
1	D	3671	0	3605	25	0
2	A	44	0	26	8	0
2	B	44	0	26	10	0
2	C	44	0	26	6	0
2	D	44	0	26	3	0
3	A	1	0	0	0	0
3	B	1	0	0	0	0
3	C	1	0	0	0	0
3	D	1	0	0	0	0
4	A	10	0	5	8	0
4	B	10	0	4	8	0
4	C	10	0	4	8	0
4	D	10	0	4	5	0
5	A	209	0	0	3	0
5	B	262	0	0	4	0
5	C	136	0	0	3	0

Continued on next page...

Continued from previous page...

Mol	Chain	Non-H	H(model)	H(added)	Clashes	Symm-Clashes
5	D	192	0	0	2	0
All	All	15703	0	14541	144	0

The all-atom clashscore is defined as the number of clashes found per 1000 atoms (including hydrogen atoms). The all-atom clashscore for this structure is 5.

All (144) close contacts within the same asymmetric unit are listed below, sorted by their clash magnitude.

Atom-1	Atom-2	Interatomic distance (Å)	Clash overlap (Å)
4:B:603:6OH:OA2	4:B:603:6OH:H4	1.46	1.08
4:C:603:6OH:OA1	4:C:603:6OH:H4	1.46	1.07
4:D:603:6OH:H4	4:D:603:6OH:OA1	1.47	1.07
4:A:603:6OH:H4	4:A:603:6OH:OA2	1.56	1.05
1:A:337:ASP:OD1	1:A:338:GLY:N	1.94	1.00
1:A:337:ASP:CG	1:A:338:GLY:H	1.64	0.97
2:A:601:NAD:H4N	4:A:603:6OH:H1	1.48	0.92
1:C:120:ARG:NH1	4:C:603:6OH:OA3	2.07	0.87
1:C:464:ARG:HH11	1:C:464:ARG:CG	1.87	0.87
1:C:464:ARG:HG3	1:C:464:ARG:NH1	1.91	0.85
1:B:108:ARG:NH1	1:B:112:GLN:OE1	2.14	0.79
1:C:464:ARG:HG3	1:C:464:ARG:HH11	1.44	0.79
1:C:302:CYS:SG	2:C:601:NAD:C4N	2.71	0.78
1:A:337:ASP:CG	1:A:338:GLY:N	2.37	0.74
4:D:603:6OH:CA4	4:D:603:6OH:OA1	2.33	0.74
1:B:302:CYS:SG	2:B:601:NAD:C4N	2.76	0.73
1:C:366:THR:HB	1:C:392:THR:HG22	1.71	0.72
1:A:302:CYS:SG	2:A:601:NAD:C4N	2.78	0.71
1:C:280:ASP:OD2	1:C:443:ARG:NH1	2.23	0.71
2:C:601:NAD:N7N	4:C:603:6OH:H1	2.06	0.70
1:B:78:GLN:NE2	5:B:710:HOH:O	2.26	0.69
1:A:280:ASP:OD2	1:A:443:ARG:NH1	2.25	0.69
1:D:462:TYR:OH	4:D:603:6OH:H6	1.93	0.68
1:C:112:GLN:OE1	1:C:112:GLN:N	2.27	0.68
1:D:108:ARG:CD	1:D:112:GLN:NE2	2.56	0.68
1:D:120:ARG:NH1	4:D:603:6OH:OA3	2.23	0.67
4:A:603:6OH:OA2	4:A:603:6OH:CA4	2.40	0.66
1:C:302:CYS:SG	2:C:601:NAD:H4N	2.35	0.66
1:D:302:CYS:SG	2:D:601:NAD:C4N	2.84	0.66
1:C:464:ARG:HH12	4:C:603:6OH:CA2	2.09	0.65
1:B:491:SER:O	5:B:704:HOH:O	2.14	0.64
1:C:323:LYS:HE2	1:C:368:VAL:O	1.98	0.64

Continued on next page...

Continued from previous page...

Atom-1	Atom-2	Interatomic distance (Å)	Clash overlap (Å)
1:D:108:ARG:HD3	1:D:112:GLN:NE2	2.13	0.63
1:B:302:CYS:SG	2:B:601:NAD:H4N	2.38	0.61
1:A:269:LEU:O	2:A:601:NAD:O7N	2.19	0.61
2:B:601:NAD:H71N	4:B:603:6OH:H1	1.66	0.61
1:D:418:GLU:OE2	1:D:446:ARG:HD2	2.01	0.60
2:B:601:NAD:H4N	4:B:603:6OH:H1	1.81	0.60
4:B:603:6OH:CA4	4:B:603:6OH:OA2	2.34	0.60
1:A:406:PHE:CE2	2:A:601:NAD:H2D	2.37	0.59
1:B:231:GLU:O	1:B:234:THR:HG22	2.03	0.58
1:B:327:GLU:OE1	5:B:906:HOH:O	2.18	0.57
1:A:262:VAL:O	1:A:262:VAL:HG12	2.03	0.57
1:A:391:TRP:CH2	1:A:409:VAL:HG21	2.40	0.56
2:A:601:NAD:H4N	4:A:603:6OH:CA6	2.29	0.56
1:D:406:PHE:CE2	2:D:601:NAD:H2D	2.40	0.56
1:D:272:LYS:HG3	1:D:307:ARG:HD2	1.87	0.56
1:C:108:ARG:HD2	1:C:297:ASN:OD1	2.04	0.56
2:C:601:NAD:H71N	4:C:603:6OH:H1	1.69	0.55
1:C:464:ARG:HD2	1:C:465:ASP:N	2.22	0.55
1:D:108:ARG:HD2	1:D:112:GLN:NE2	2.22	0.55
2:B:601:NAD:N7N	4:B:603:6OH:H1	2.22	0.54
1:B:108:ARG:HD2	1:B:297:ASN:OD1	2.07	0.54
1:B:302:CYS:SG	4:B:603:6OH:H1	2.48	0.53
1:C:272:LYS:HG3	1:C:307:ARG:HD2	1.91	0.53
1:A:302:CYS:SG	4:A:603:6OH:H1	2.49	0.53
1:B:280:ASP:OD2	1:B:443:ARG:NH1	2.42	0.53
1:B:269:LEU:O	2:B:601:NAD:O7N	2.27	0.53
1:D:280:ASP:OD2	1:D:443:ARG:NH1	2.43	0.52
1:A:108:ARG:NH2	1:A:170:LEU:HD23	2.25	0.51
1:B:78:GLN:CD	1:B:78:GLN:H	2.13	0.50
1:D:31:SER:CB	1:D:51:GLU:O	2.59	0.50
1:C:80:ARG:HD3	5:C:787:HOH:O	2.11	0.50
1:A:361:VAL:O	5:A:763:HOH:O	2.18	0.50
1:A:480:ARG:HG2	1:A:480:ARG:HH11	1.76	0.50
1:B:312:ARG:HG3	1:B:313:SER:N	2.27	0.50
1:D:137:THR:HB	1:D:154:THR:OG1	2.11	0.50
1:C:83:LEU:O	1:C:86:LYS:HB2	2.12	0.49
1:D:272:LYS:CG	1:D:307:ARG:HD2	2.42	0.49
1:C:36:ALA:HB1	1:C:45:LEU:HD12	1.94	0.49
1:C:262:VAL:O	5:C:709:HOH:O	2.20	0.49
1:A:274:ALA:HA	1:A:307:ARG:O	2.13	0.49
1:C:464:ARG:HD2	1:C:465:ASP:H	1.77	0.48

Continued on next page...

Continued from previous page...

Atom-1	Atom-2	Interatomic distance (Å)	Clash overlap (Å)
1:A:192:LYS:HD2	1:A:192:LYS:C	2.33	0.48
1:A:462:TYR:OH	4:A:603:6OH:H6	2.14	0.48
1:A:454:GLY:HA3	1:A:471:GLY:O	2.14	0.48
1:D:234:THR:HG21	5:D:858:HOH:O	2.13	0.48
1:C:21:LEU:N	1:C:21:LEU:HD12	2.29	0.48
1:B:280:ASP:C	1:B:280:ASP:OD1	2.53	0.48
1:B:462:TYR:OH	4:B:603:6OH:H6	2.14	0.47
1:C:366:THR:HB	1:C:392:THR:CG2	2.41	0.47
1:C:344:LEU:HD23	1:C:350:ARG:HA	1.95	0.47
1:C:302:CYS:HB3	2:C:601:NAD:C4N	2.44	0.47
1:A:480:ARG:HG2	1:A:480:ARG:NH1	2.29	0.47
1:B:108:ARG:NH2	1:B:116:LEU:HD23	2.29	0.47
1:D:480:ARG:HG2	1:D:480:ARG:NH1	2.30	0.47
1:D:462:TYR:CZ	4:D:603:6OH:H6	2.50	0.46
1:D:273:ASN:ND2	1:D:302:CYS:O	2.47	0.46
1:B:344:LEU:HD23	1:B:350:ARG:HA	1.97	0.46
1:C:234:THR:HG23	1:C:257:ALA:HB1	1.98	0.46
1:A:378:ASP:HB2	5:A:770:HOH:O	2.15	0.46
1:C:454:GLY:HA3	1:C:471:GLY:O	2.16	0.45
1:B:111:HIS:CE1	1:B:112:GLN:HG3	2.51	0.45
1:B:302:CYS:HB3	2:B:601:NAD:C4N	2.47	0.45
1:A:272:LYS:HG3	1:A:307:ARG:HD2	1.99	0.45
1:B:274:ALA:HA	1:B:307:ARG:O	2.16	0.45
1:C:111:HIS:HB3	1:C:112:GLN:OE1	2.16	0.45
1:A:272:LYS:CG	1:A:307:ARG:HD2	2.47	0.45
2:A:601:NAD:H71N	4:A:603:6OH:CA6	2.30	0.45
1:C:137:THR:HB	1:C:154:THR:OG1	2.16	0.45
2:B:601:NAD:H71N	4:B:603:6OH:CA6	2.27	0.44
2:B:601:NAD:PN	5:B:864:HOH:O	2.75	0.44
1:D:269:LEU:O	2:D:601:NAD:N7N	2.40	0.44
1:C:282:ASP:C	1:C:282:ASP:OD1	2.56	0.44
1:C:240:SER:OG	5:C:726:HOH:O	2.21	0.43
1:D:377:ASN:N	1:D:381:ASP:OD2	2.49	0.43
1:A:282:ASP:C	1:A:282:ASP:OD1	2.57	0.43
1:C:234:THR:HG23	1:C:257:ALA:CB	2.49	0.43
2:A:601:NAD:H71N	4:A:603:6OH:H1	1.84	0.43
1:C:302:CYS:HB3	2:C:601:NAD:C3N	2.48	0.43
1:C:373:VAL:HG23	1:C:374:PRO:O	2.20	0.42
1:B:242:LEU:C	1:B:242:LEU:HD13	2.40	0.42
1:C:464:ARG:HH12	4:C:603:6OH:CA1	2.31	0.42
1:A:262:VAL:O	1:A:262:VAL:CG1	2.67	0.42

Continued on next page...

Continued from previous page...

Atom-1	Atom-2	Interatomic distance (Å)	Clash overlap (Å)
1:C:116:LEU:O	1:C:120:ARG:HB2	2.20	0.42
1:D:460:THR:HG21	1:D:463:LEU:HD12	2.02	0.42
1:A:39:ASN:HB2	1:A:46:ILE:HD11	2.02	0.42
1:A:66:ASN:ND2	5:A:786:HOH:O	2.45	0.42
1:B:464:ARG:HD2	1:B:464:ARG:HA	1.87	0.42
1:A:389:THR:O	1:A:409:VAL:HA	2.20	0.41
1:C:462:TYR:CZ	4:C:603:6OH:H6	2.55	0.41
1:A:18:SER:HB3	1:A:46:ILE:O	2.19	0.41
1:C:462:TYR:OH	4:C:603:6OH:H6	2.20	0.41
1:D:480:ARG:HG2	1:D:480:ARG:HH11	1.86	0.41
1:B:22:ASN:O	1:B:28:PHE:HA	2.20	0.41
1:B:167:PRO:HD3	1:B:245:THR:HB	2.02	0.41
1:C:242:LEU:HD13	1:C:242:LEU:C	2.41	0.41
1:D:75:LEU:HD22	1:D:79:ASP:HB3	2.02	0.41
1:B:429:ASN:HB3	1:B:475:LEU:HD12	2.03	0.41
1:B:156:ARG:HG3	1:B:493:ILE:CD1	2.51	0.41
1:C:173:LEU:HD23	1:C:173:LEU:C	2.40	0.41
1:A:302:CYS:SG	2:A:601:NAD:C3N	3.09	0.41
1:B:234:THR:HG23	1:B:257:ALA:HB1	2.03	0.41
1:D:272:LYS:HG3	1:D:307:ARG:CD	2.51	0.41
1:C:197:SER:N	1:C:198:PRO:HD3	2.36	0.41
1:C:109:PRO:HB2	1:C:112:GLN:OE1	2.21	0.40
1:D:78:GLN:HB2	5:D:836:HOH:O	2.21	0.40
1:C:42:ASN:OD1	1:C:44:LYS:HB2	2.21	0.40
1:B:61:VAL:HG11	1:B:236:HIS:ND1	2.36	0.40
1:B:302:CYS:HB3	2:B:601:NAD:C3N	2.51	0.40
1:B:84:ILE:HA	1:B:87:ILE:HD12	2.04	0.40
1:D:118:ILE:N	1:D:119:PRO:CD	2.84	0.40
1:A:464:ARG:CD	1:A:470:PHE:CE2	3.04	0.40
1:A:464:ARG:HD2	1:A:470:PHE:CE2	2.56	0.40

There are no symmetry-related clashes.

5.3 Torsion angles

5.3.1 Protein backbone

In the following table, the Percentiles column shows the percent Ramachandran outliers of the chain as a percentile score with respect to all X-ray entries followed by that with respect to entries of similar resolution.

The Analysed column shows the number of residues for which the backbone conformation was analysed, and the total number of residues.

Mol	Chain	Analysed	Favoured	Allowed	Outliers	Percentiles	
1	A	481/500 (96%)	459 (95%)	21 (4%)	1 (0%)	52	51
1	B	481/500 (96%)	459 (95%)	22 (5%)	0	100	100
1	C	481/500 (96%)	455 (95%)	24 (5%)	2 (0%)	39	34
1	D	481/500 (96%)	465 (97%)	15 (3%)	1 (0%)	52	51
All	All	1924/2000 (96%)	1838 (96%)	82 (4%)	4 (0%)	52	51

All (4) Ramachandran outliers are listed below:

Mol	Chain	Res	Type
1	A	337	ASP
1	C	337	ASP
1	D	337	ASP
1	C	33	SER

5.3.2 Protein sidechains ⓘ

In the following table, the Percentiles column shows the percent sidechain outliers of the chain as a percentile score with respect to all X-ray entries followed by that with respect to entries of similar resolution.

The Analysed column shows the number of residues for which the sidechain conformation was analysed, and the total number of residues.

Mol	Chain	Analysed	Rotameric	Outliers	Percentiles	
1	A	392/407 (96%)	383 (98%)	9 (2%)	58	62
1	B	392/407 (96%)	379 (97%)	13 (3%)	45	44
1	C	392/407 (96%)	380 (97%)	12 (3%)	47	47
1	D	392/407 (96%)	384 (98%)	8 (2%)	63	67
All	All	1568/1628 (96%)	1526 (97%)	42 (3%)	52	53

All (42) residues with a non-rotameric sidechain are listed below:

Mol	Chain	Res	Type
1	A	192	LYS
1	A	234	THR
1	A	242	LEU
1	A	355	SER

Continued on next page...

Continued from previous page...

Mol	Chain	Res	Type
1	A	392	THR
1	A	406	PHE
1	A	432	LEU
1	A	463	LEU
1	A	484	ARG
1	B	18	SER
1	B	78	GLN
1	B	192	LYS
1	B	203	LEU
1	B	234	THR
1	B	242	LEU
1	B	344	LEU
1	B	350	ARG
1	B	392	THR
1	B	395	SER
1	B	432	LEU
1	B	463	LEU
1	B	464	ARG
1	C	33	SER
1	C	116	LEU
1	C	156	ARG
1	C	192	LYS
1	C	203	LEU
1	C	234	THR
1	C	242	LEU
1	C	262	VAL
1	C	344	LEU
1	C	432	LEU
1	C	463	LEU
1	C	464	ARG
1	D	34	SER
1	D	148	SER
1	D	192	LYS
1	D	234	THR
1	D	242	LEU
1	D	392	THR
1	D	432	LEU
1	D	463	LEU

Some sidechains can be flipped to improve hydrogen bonding and reduce clashes. All (3) such sidechains are listed below:

Mol	Chain	Res	Type
1	B	78	GLN
1	D	56	GLN
1	D	112	GLN

5.3.3 RNA ⓘ

There are no RNA molecules in this entry.

5.4 Non-standard residues in protein, DNA, RNA chains ⓘ

There are no non-standard protein/DNA/RNA residues in this entry.

5.5 Carbohydrates ⓘ

There are no carbohydrates in this entry.

5.6 Ligand geometry ⓘ

Of 12 ligands modelled in this entry, 4 are monoatomic - leaving 8 for Mogul analysis.

In the following table, the Counts columns list the number of bonds (or angles) for which Mogul statistics could be retrieved, the number of bonds (or angles) that are observed in the model and the number of bonds (or angles) that are defined in the chemical component dictionary. The Link column lists molecule types, if any, to which the group is linked. The Z score for a bond length (or angle) is the number of standard deviations the observed value is removed from the expected value. A bond length (or angle) with $|Z| > 2$ is considered an outlier worth inspection. RMSZ is the root-mean-square of all Z scores of the bond lengths (or angles).

Mol	Type	Chain	Res	Link	Bond lengths			Bond angles		
					Counts	RMSZ	# $ Z > 2$	Counts	RMSZ	# $ Z > 2$
2	NAD	A	601	-	38,48,48	1.10	3 (7%)	47,73,73	2.52	14 (29%)
4	6OH	A	603	-	5,9,9	1.15	1 (20%)	4,10,10	8.99	1 (25%)
2	NAD	B	601	-	38,48,48	1.32	5 (13%)	47,73,73	2.29	17 (36%)
4	6OH	B	603	-	5,9,9	0.90	0	4,10,10	8.76	2 (50%)
2	NAD	C	601	-	38,48,48	1.29	5 (13%)	47,73,73	1.93	9 (19%)
4	6OH	C	603	-	5,9,9	1.18	0	4,10,10	8.84	4 (100%)
2	NAD	D	601	-	38,48,48	1.12	5 (13%)	47,73,73	2.20	11 (23%)
4	6OH	D	603	-	5,9,9	1.09	0	4,10,10	8.84	3 (75%)

In the following table, the Chirals column lists the number of chiral outliers, the number of chiral

centers analysed, the number of these observed in the model and the number defined in the chemical component dictionary. Similar counts are reported in the Torsion and Rings columns. '-' means no outliers of that kind were identified.

Mol	Type	Chain	Res	Link	Chirals	Torsions	Rings
2	NAD	A	601	-	-	0/22/62/62	0/5/5/5
4	6OH	A	603	-	-	1/3/9/9	0/0/0/0
2	NAD	B	601	-	-	0/22/62/62	0/5/5/5
4	6OH	B	603	-	-	1/3/9/9	0/0/0/0
2	NAD	C	601	-	-	0/22/62/62	0/5/5/5
4	6OH	C	603	-	-	1/3/9/9	0/0/0/0
2	NAD	D	601	-	-	0/22/62/62	0/5/5/5
4	6OH	D	603	-	-	1/3/9/9	0/0/0/0

All (19) bond length outliers are listed below:

Mol	Chain	Res	Type	Atoms	Z	Observed(Å)	Ideal(Å)
4	A	603	6OH	CA4-CA5	-2.04	1.30	1.35
2	A	601	NAD	O4B-C1B	2.34	1.44	1.41
2	C	601	NAD	O4D-C1D	2.39	1.44	1.41
2	D	601	NAD	O4B-C1B	2.42	1.44	1.41
2	B	601	NAD	O4D-C1D	2.42	1.44	1.41
2	D	601	NAD	C2N-C3N	2.43	1.42	1.39
2	A	601	NAD	C2A-N3A	2.44	1.36	1.32
2	C	601	NAD	C2N-C3N	2.45	1.42	1.39
2	B	601	NAD	C3N-C7N	2.57	1.54	1.50
2	D	601	NAD	C3N-C7N	2.65	1.54	1.50
2	A	601	NAD	C5A-C4A	2.69	1.46	1.40
2	C	601	NAD	C3N-C7N	2.77	1.54	1.50
2	B	601	NAD	C2N-C3N	2.80	1.43	1.39
2	D	601	NAD	O4D-C1D	2.94	1.44	1.41
2	C	601	NAD	C5A-C4A	3.02	1.47	1.40
2	D	601	NAD	C5A-C4A	3.09	1.47	1.40
2	B	601	NAD	O4B-C1B	3.20	1.45	1.41
2	B	601	NAD	C5A-C4A	3.46	1.48	1.40
2	C	601	NAD	O4B-C1B	3.96	1.46	1.41

All (61) bond angle outliers are listed below:

Mol	Chain	Res	Type	Atoms	Z	Observed(°)	Ideal(°)
4	A	603	6OH	CA4-CA5-CA6	-17.90	103.04	121.45
4	B	603	6OH	CA4-CA5-CA6	-17.24	103.71	121.45
4	D	603	6OH	CA4-CA5-CA6	-17.22	103.73	121.45
4	C	603	6OH	CA4-CA5-CA6	-17.00	103.96	121.45

Continued on next page...

Continued from previous page...

Mol	Chain	Res	Type	Atoms	Z	Observed(°)	Ideal(°)
2	C	601	NAD	N3A-C2A-N1A	-9.18	121.86	128.89
2	D	601	NAD	N3A-C2A-N1A	-8.57	122.33	128.89
2	B	601	NAD	N3A-C2A-N1A	-7.48	123.17	128.89
2	A	601	NAD	N3A-C2A-N1A	-6.61	123.84	128.89
2	A	601	NAD	O7N-C7N-N7N	-5.62	114.68	122.59
2	B	601	NAD	O7N-C7N-N7N	-5.33	115.10	122.59
2	B	601	NAD	PN-O3-PA	-4.87	119.04	132.73
2	C	601	NAD	O7N-C7N-N7N	-4.27	116.58	122.59
2	D	601	NAD	O7N-C7N-N7N	-4.20	116.69	122.59
2	B	601	NAD	C4D-O4D-C1D	-4.04	105.28	109.72
2	D	601	NAD	PN-O3-PA	-3.52	122.84	132.73
2	B	601	NAD	C1B-N9A-C4A	-3.48	121.69	126.94
2	A	601	NAD	C2N-C3N-C4N	-3.47	114.42	118.29
2	D	601	NAD	O5D-PN-O1N	-3.47	96.14	109.62
2	D	601	NAD	C4A-C5A-N7A	-3.36	106.39	109.48
4	C	603	6OH	OA3-CA2-CA3	-3.30	116.83	122.80
2	A	601	NAD	C4D-O4D-C1D	-3.26	106.14	109.72
2	C	601	NAD	O3-PN-O5D	-3.24	94.33	102.94
4	D	603	6OH	OA4-CA6-CA5	-2.86	118.19	125.51
2	A	601	NAD	PN-O3-PA	-2.77	124.96	132.73
4	B	603	6OH	OA4-CA6-CA5	-2.71	118.57	125.51
2	C	601	NAD	C4A-C5A-N7A	-2.70	106.99	109.48
2	B	601	NAD	C4N-C3N-C7N	-2.68	114.02	121.09
2	D	601	NAD	C4D-O4D-C1D	-2.59	106.87	109.72
4	D	603	6OH	OA3-CA2-CA3	-2.59	118.12	122.80
2	A	601	NAD	C4A-C5A-N7A	-2.53	107.15	109.48
2	B	601	NAD	C4B-O4B-C1B	-2.41	107.07	109.72
4	C	603	6OH	OA4-CA6-CA5	-2.39	119.40	125.51
2	D	601	NAD	C1B-N9A-C4A	-2.19	123.64	126.94
2	B	601	NAD	C4A-C5A-N7A	-2.19	107.47	109.48
2	B	601	NAD	O5D-PN-O1N	-2.16	101.21	109.62
2	A	601	NAD	C1B-N9A-C4A	-2.11	123.76	126.94
2	C	601	NAD	C4N-C3N-C7N	-2.10	115.53	121.09
2	B	601	NAD	C2B-C1B-N9A	-2.01	111.23	114.29
2	A	601	NAD	O2D-C2D-C3D	2.01	118.37	111.83
2	B	601	NAD	O2B-C2B-C3B	2.09	118.61	111.83
2	D	601	NAD	C3N-C7N-N7N	2.13	120.15	117.82
2	A	601	NAD	O2N-PN-O1N	2.17	124.31	112.53
2	A	601	NAD	C5N-C4N-C3N	2.22	123.12	120.33
2	C	601	NAD	C2A-N1A-C6A	2.42	123.08	118.77
2	B	601	NAD	O2N-PN-O1N	2.45	125.81	112.53
2	C	601	NAD	C3N-C7N-N7N	2.46	120.51	117.82

Continued on next page...

Continued from previous page...

Mol	Chain	Res	Type	Atoms	Z	Observed(°)	Ideal(°)
2	A	601	NAD	O5D-PN-O1N	2.55	119.53	109.62
2	D	601	NAD	O2N-PN-O5D	2.61	121.63	108.46
2	C	601	NAD	C2N-C3N-C7N	2.70	127.16	119.31
2	A	601	NAD	O3-PA-O5B	2.71	110.13	102.94
4	C	603	6OH	CA5-CA4-CA3	2.72	129.40	123.39
2	B	601	NAD	O3D-C3D-C2D	2.93	121.37	111.83
2	C	601	NAD	O7N-C7N-C3N	3.02	122.89	119.59
2	B	601	NAD	O7N-C7N-C3N	3.04	122.91	119.59
2	D	601	NAD	O7N-C7N-C3N	3.26	123.14	119.59
2	B	601	NAD	C2N-C3N-C7N	3.28	128.82	119.31
2	B	601	NAD	C2A-N1A-C6A	3.42	124.88	118.77
2	B	601	NAD	C3N-C7N-N7N	3.80	121.98	117.82
2	D	601	NAD	O4D-C1D-N1N	5.98	114.70	108.13
2	A	601	NAD	C3N-C7N-N7N	7.59	126.12	117.82
2	A	601	NAD	O4D-C1D-N1N	8.26	117.21	108.13

There are no chirality outliers.

All (4) torsion outliers are listed below:

Mol	Chain	Res	Type	Atoms
4	A	603	6OH	OA4-CA6-CA5-CA4
4	B	603	6OH	OA4-CA6-CA5-CA4
4	D	603	6OH	OA4-CA6-CA5-CA4
4	C	603	6OH	OA4-CA6-CA5-CA4

There are no ring outliers.

8 monomers are involved in 46 short contacts:

Mol	Chain	Res	Type	Clashes	Symm-Clashes
2	A	601	NAD	8	0
4	A	603	6OH	8	0
2	B	601	NAD	10	0
4	B	603	6OH	8	0
2	C	601	NAD	6	0
4	C	603	6OH	8	0
2	D	601	NAD	3	0
4	D	603	6OH	5	0

5.7 Other polymers ⓘ

There are no such residues in this entry.

5.8 Polymer linkage issues ⓘ

There are no chain breaks in this entry.

6 Fit of model and data ⓘ

6.1 Protein, DNA and RNA chains ⓘ

In the following table, the column labelled ‘#RSRZ > 2’ contains the number (and percentage) of RSRZ outliers, followed by percent RSRZ outliers for the chain as percentile scores relative to all X-ray entries and entries of similar resolution. The OWAB column contains the minimum, median, 95th percentile and maximum values of the occupancy-weighted average B-factor per residue. The column labelled ‘Q < 0.9’ lists the number of (and percentage) of residues with an average occupancy less than 0.9.

Mol	Chain	Analysed	<RSRZ>	#RSRZ>2	OWAB(Å ²)	Q<0.9
1	A	483/500 (96%)	-0.09	15 (3%) 52 62	23, 36, 50, 71	0
1	B	483/500 (96%)	-0.15	7 (1%) 78 83	23, 35, 48, 77	0
1	C	483/500 (96%)	0.23	25 (5%) 31 41	25, 47, 63, 94	0
1	D	483/500 (96%)	-0.03	7 (1%) 78 83	24, 38, 53, 68	0
All	All	1932/2000 (96%)	-0.01	54 (2%) 56 66	23, 38, 56, 94	0

All (54) RSRZ outliers are listed below:

Mol	Chain	Res	Type	RSRZ
1	B	18	SER	7.8
1	C	45	LEU	4.5
1	C	18	SER	4.4
1	C	337	ASP	4.2
1	A	220	LEU	4.1
1	C	48	ASP	3.8
1	D	220	LEU	3.8
1	A	226	LYS	3.6
1	C	227	ASP	3.3
1	A	337	ASP	3.2
1	A	191	ALA	2.9
1	C	220	LEU	2.9
1	C	335	ASP	2.9
1	A	409	VAL	2.9
1	C	193	PRO	2.8
1	A	308	VAL	2.8
1	B	409	VAL	2.8
1	D	294	SER	2.7
1	C	224	PHE	2.7
1	D	145	SER	2.7
1	C	32	ALA	2.6

Continued on next page...

Continued from previous page...

Mol	Chain	Res	Type	RSRZ
1	A	227	ASP	2.6
1	A	218	PHE	2.5
1	C	260	ASP	2.5
1	A	190	VAL	2.5
1	C	191	ALA	2.5
1	C	44	LYS	2.5
1	C	164	VAL	2.5
1	B	164	VAL	2.4
1	A	32	ALA	2.4
1	D	305	SER	2.4
1	C	50	PHE	2.4
1	A	146	ASP	2.4
1	B	179	VAL	2.3
1	C	31	SER	2.3
1	A	193	PRO	2.3
1	A	221	ILE	2.3
1	C	55	LYS	2.3
1	B	337	ASP	2.2
1	A	175	PHE	2.2
1	C	410	CYS	2.2
1	A	179	VAL	2.2
1	C	19	GLN	2.1
1	D	337	ASP	2.1
1	D	19	GLN	2.1
1	B	220	LEU	2.1
1	C	190	VAL	2.1
1	D	164	VAL	2.1
1	C	328	ARG	2.1
1	B	410	CYS	2.1
1	C	382	GLN	2.0
1	C	379	GLU	2.0
1	C	111	HIS	2.0
1	C	146	ASP	2.0

6.2 Non-standard residues in protein, DNA, RNA chains ⓘ

There are no non-standard protein/DNA/RNA residues in this entry.

6.3 Carbohydrates ⓘ

There are no carbohydrates in this entry.

6.4 Ligands [i](#)

In the following table, the Atoms column lists the number of modelled atoms in the group and the number defined in the chemical component dictionary. LLDF column lists the quality of electron density of the group with respect to its neighbouring residues in protein, DNA or RNA chains. The B-factors column lists the minimum, median, 95th percentile and maximum values of B factors of atoms in the group. The column labelled 'Q< 0.9' lists the number of atoms with occupancy less than 0.9.

Mol	Type	Chain	Res	Atoms	RSCC	RSR	LLDF	B-factors(Å ²)	Q<0.9
3	NA	C	602	1/1	0.74	0.20	2.12	56,56,56,56	0
4	6OH	C	603	10/10	0.78	0.16	1.70	42,45,52,55	0
2	NAD	D	601	44/44	0.90	0.18	1.25	41,59,86,95	0
4	6OH	D	603	10/10	0.91	0.14	0.84	40,46,50,53	0
4	6OH	A	603	10/10	0.90	0.12	0.34	36,43,51,51	0
4	6OH	B	603	10/10	0.92	0.12	0.19	35,40,53,59	0
2	NAD	B	601	44/44	0.94	0.12	0.17	28,46,70,79	0
2	NAD	A	601	44/44	0.93	0.14	0.14	31,51,65,77	0
2	NAD	C	601	44/44	0.91	0.14	-0.14	43,68,82,96	0
3	NA	B	602	1/1	0.95	0.10	-0.30	39,39,39,39	0
3	NA	A	602	1/1	0.99	0.10	-0.34	33,33,33,33	0
3	NA	D	602	1/1	0.97	0.05	-2.15	35,35,35,35	0

6.5 Other polymers [i](#)

There are no such residues in this entry.