



Full wwPDB X-ray Structure Validation Report ⓘ

Feb 1, 2016 – 05:23 PM GMT

PDB ID : 4I5W
Title : Crystal structure of yeast Ap4A phosphorylase Apa2 in complex with AMP
Authors : Jiang, Y.L.; Hou, W.T.; Chen, Y.; Zhou, C.Z.
Deposited on : 2012-11-29
Resolution : 2.79 Å(reported)

This is a Full wwPDB X-ray Structure Validation Report for a publicly released PDB entry.
We welcome your comments at validation@mail.wwpdb.org
A user guide is available at
<http://wwpdb.org/validation/2016/XrayValidationReportHelp>
with specific help available everywhere you see the ⓘ symbol.

The following versions of software and data (see [references ⓘ](#)) were used in the production of this report:

MolProbity : 4.02b-467
Mogul : 1.7 (RC4), CSD as536be (2015)
Xtriage (Phenix) : 1.9-1692
EDS : rb-20026688
Percentile statistics : 20151230.v01 (using entries in the PDB archive December 30th 2015)
Refmac : 5.8.0135
CCP4 : 6.5.0
Ideal geometry (proteins) : Engh & Huber (2001)
Ideal geometry (DNA, RNA) : Parkinson et al. (1996)
Validation Pipeline (wwPDB-VP) : trunk26865

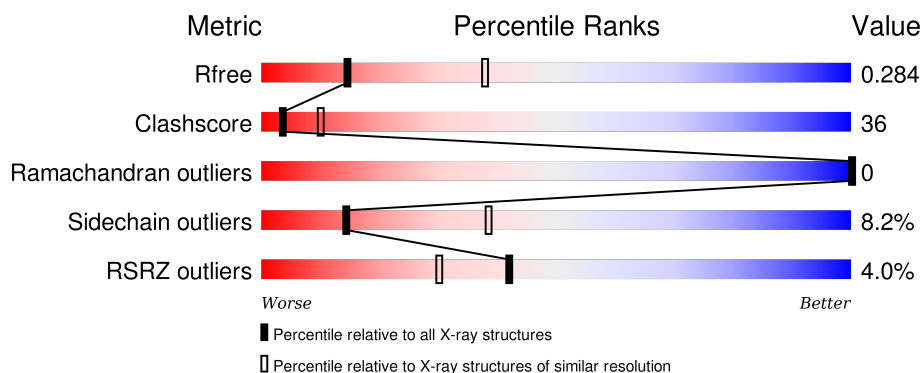
1 Overall quality at a glance

The following experimental techniques were used to determine the structure:

X-RAY DIFFRACTION

The reported resolution of this entry is 2.79 Å.

Percentile scores (ranging between 0-100) for global validation metrics of the entry are shown in the following graphic. The table shows the number of entries on which the scores are based.



Metric	Whole archive (#Entries)	Similar resolution (#Entries, resolution range(Å))
R_{free}	91344	2393 (2.80-2.80)
Clashscore	102246	2827 (2.80-2.80)
Ramachandran outliers	100387	2782 (2.80-2.80)
Sidechain outliers	100360	2784 (2.80-2.80)
RSRZ outliers	91569	2404 (2.80-2.80)

The table below summarises the geometric issues observed across the polymeric chains and their fit to the electron density. The red, orange, yellow and green segments on the lower bar indicate the fraction of residues that contain outliers for ≥ 3 , 2, 1 and 0 types of geometric quality criteria. A grey segment represents the fraction of residues that are not modelled. The numeric value for each fraction is indicated below the corresponding segment, with a dot representing fractions $\leq 5\%$. The upper red bar (where present) indicates the fraction of residues that have poor fit to the electron density. The numeric value is given above the bar.

Mol	Chain	Length	Quality of chain
1	A	333	<div> <div>4%</div> <div>44%</div> <div>37%</div> <div>7%</div> <div>12%</div> </div>
1	B	333	<div> <div>3%</div> <div>34%</div> <div>46%</div> <div>5%</div> <div>15%</div> </div>

2 Entry composition

There are 4 unique types of molecules in this entry. The entry contains 4712 atoms, of which 0 are hydrogens and 0 are deuteriums.

In the tables below, the ZeroOcc column contains the number of atoms modelled with zero occupancy, the AltConf column contains the number of residues with at least one atom in alternate conformation and the Trace column contains the number of residues modelled with at most 2 atoms.

- Molecule 1 is a protein called 5',5'''-P-1,P-4-tetraphosphate phosphorylase 2.

Mol	Chain	Residues	Atoms					ZeroOcc	AltConf	Trace
1	A	292	Total	C	N	O	S	0	0	0
			2319	1481	384	438	16			
1	B	282	Total	C	N	O	S	0	0	0
			2240	1427	371	426	16			

There are 16 discrepancies between the modelled and reference sequences:

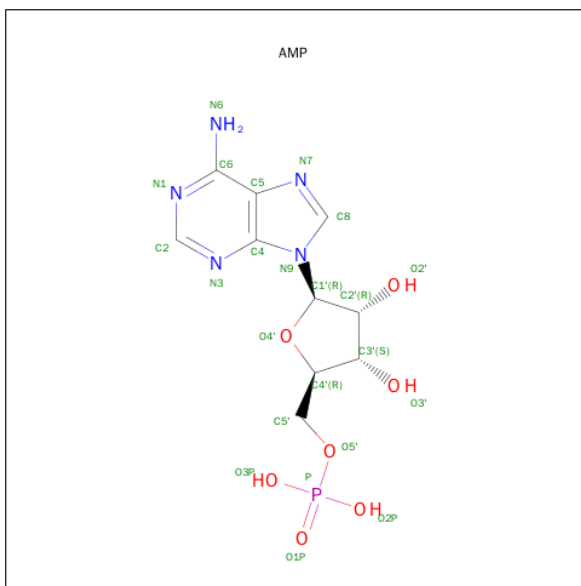
Chain	Residue	Modelled	Actual	Comment	Reference
A	-7	MET	-	EXPRESSION TAG	UNP P22108
A	-6	GLY	-	EXPRESSION TAG	UNP P22108
A	-5	HIS	-	EXPRESSION TAG	UNP P22108
A	-4	HIS	-	EXPRESSION TAG	UNP P22108
A	-3	HIS	-	EXPRESSION TAG	UNP P22108
A	-2	HIS	-	EXPRESSION TAG	UNP P22108
A	-1	HIS	-	EXPRESSION TAG	UNP P22108
A	0	HIS	-	EXPRESSION TAG	UNP P22108
B	-7	MET	-	EXPRESSION TAG	UNP P22108
B	-6	GLY	-	EXPRESSION TAG	UNP P22108
B	-5	HIS	-	EXPRESSION TAG	UNP P22108
B	-4	HIS	-	EXPRESSION TAG	UNP P22108
B	-3	HIS	-	EXPRESSION TAG	UNP P22108
B	-2	HIS	-	EXPRESSION TAG	UNP P22108
B	-1	HIS	-	EXPRESSION TAG	UNP P22108
B	0	HIS	-	EXPRESSION TAG	UNP P22108

- Molecule 2 is PHOSPHATE ION (three-letter code: PO4) (formula: O₄P).



Mol	Chain	Residues	Atoms			ZeroOcc	AltConf
2	A	1	Total	O	P	0	0
			5	4	1		

- Molecule 3 is ADENOSINE MONOPHOSPHATE (three-letter code: AMP) (formula: $C_{10}H_{14}N_5O_7P$).



Mol	Chain	Residues	Atoms					ZeroOcc	AltConf
3	A	1	Total	C	N	O	P	0	0
			23	10	5	7	1		
3	A	1	Total	C	N	O	P	0	0
			23	10	5	7	1		
3	B	1	Total	C	N	O	P	0	0
			23	10	5	7	1		

Continued on next page...

Continued from previous page...

Mol	Chain	Residues	Atoms					ZeroOcc	AltConf
3	B	1	Total	C	N	O	P	0	0
			23	10	5	7	1		

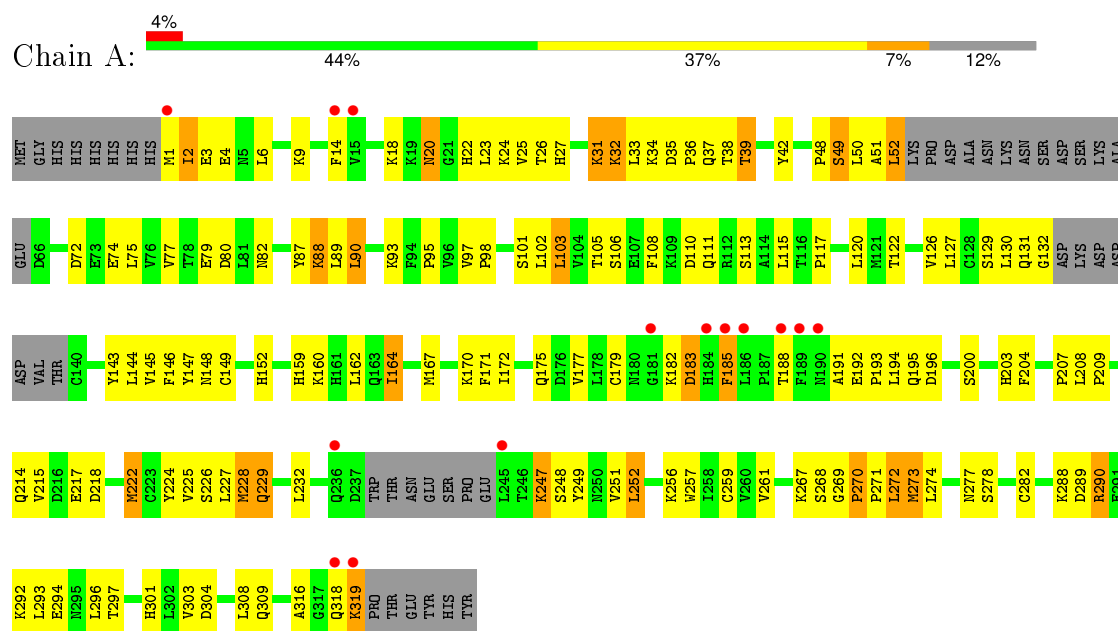
- Molecule 4 is water.

Mol	Chain	Residues	Atoms		ZeroOcc	AltConf
4	A	29	Total	O	0	0
			29	29		
4	B	27	Total	O	0	0
			27	27		

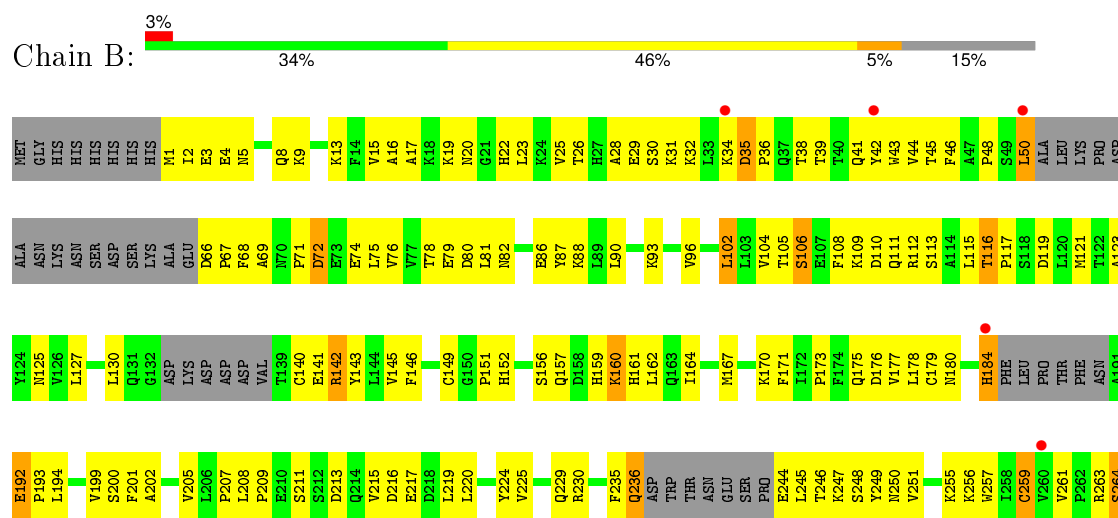
3 Residue-property plots

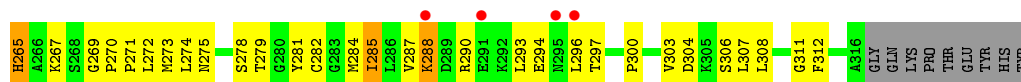
These plots are drawn for all protein, RNA and DNA chains in the entry. The first graphic for a chain summarises the proportions of errors displayed in the second graphic. The second graphic shows the sequence view annotated by issues in geometry and electron density. Residues are color-coded according to the number of geometric quality criteria for which they contain at least one outlier: green = 0, yellow = 1, orange = 2 and red = 3 or more. A red dot above a residue indicates a poor fit to the electron density ($RSRZ > 2$). Stretches of 2 or more consecutive residues without any outlier are shown as a green connector. Residues present in the sample, but not in the model, are shown in grey.

- Molecule 1: 5',5'''-P-1,P-4-tetraphosphate phosphorylase 2



- Molecule 1: 5',5'''-P-1,P-4-tetraphosphate phosphorylase 2





4 Data and refinement statistics

Property	Value	Source
Space group	P 21 21 21	Depositor
Cell constants a, b, c, α , β , γ	52.85Å 70.33Å 174.24Å 90.00° 90.00° 90.00°	Depositor
Resolution (Å)	43.56 – 2.79 43.56 – 2.79	Depositor EDS
% Data completeness (in resolution range)	93.7 (43.56-2.79) 93.8 (43.56-2.79)	Depositor EDS
R_{merge}	0.12	Depositor
R_{sym}	(Not available)	Depositor
$\langle I/\sigma(I) \rangle$ ¹	4.29 (at 2.81Å)	Xtriage
Refinement program	PHENIX (phenix.refine: 1.7.1_743)	Depositor
R, R_{free}	0.224 , 0.261 0.227 , 0.284	Depositor DCC
R_{free} test set	801 reflections (5.36%)	DCC
Wilson B-factor (Å ²)	60.3	Xtriage
Anisotropy	0.340	Xtriage
Bulk solvent k_{sol} (e/Å ³), B_{sol} (Å ²)	0.26 , 49.0	EDS
Estimated twinning fraction	No twinning to report.	Xtriage
L-test for twinning ²	$\langle L \rangle = 0.49$, $\langle L^2 \rangle = 0.32$	Xtriage
Outliers	0 of 15740 reflections	Xtriage
F_o, F_c correlation	0.91	EDS
Total number of atoms	4712	wwPDB-VP
Average B, all atoms (Å ²)	65.0	wwPDB-VP

Xtriage's analysis on translational NCS is as follows: *The largest off-origin peak in the Patterson function is 4.31% of the height of the origin peak. No significant pseudotranslation is detected.*

¹Intensities estimated from amplitudes.

²Theoretical values of $\langle |L| \rangle$, $\langle L^2 \rangle$ for acentric reflections are 0.5, 0.375 respectively for untwinned datasets, and 0.333, 0.2 for perfectly twinned datasets.

5 Model quality [i](#)

5.1 Standard geometry [i](#)

Bond lengths and bond angles in the following residue types are not validated in this section: AMP, PO4

The Z score for a bond length (or angle) is the number of standard deviations the observed value is removed from the expected value. A bond length (or angle) with $|Z| > 5$ is considered an outlier worth inspection. RMSZ is the root-mean-square of all Z scores of the bond lengths (or angles).

Mol	Chain	Bond lengths		Bond angles	
		RMSZ	$\# Z > 5$	RMSZ	$\# Z > 5$
1	A	0.50	1/2372 (0.0%)	0.68	2/3212 (0.1%)
1	B	0.47	0/2289	0.66	0/3098
All	All	0.49	1/4661 (0.0%)	0.67	2/6310 (0.0%)

All (1) bond length outliers are listed below:

Mol	Chain	Res	Type	Atoms	Z	Observed(Å)	Ideal(Å)
1	A	282	CYS	CB-SG	-5.71	1.72	1.81

All (2) bond angle outliers are listed below:

Mol	Chain	Res	Type	Atoms	Z	Observed(°)	Ideal(°)
1	A	270	PRO	C-N-CD	6.50	142.04	128.40
1	A	272	LEU	CA-CB-CG	-5.14	103.47	115.30

There are no chirality outliers.

There are no planarity outliers.

5.2 Too-close contacts [i](#)

In the following table, the Non-H and H(model) columns list the number of non-hydrogen atoms and hydrogen atoms in the chain respectively. The H(added) column lists the number of hydrogen atoms added and optimized by MolProbity. The Clashes column lists the number of clashes within the asymmetric unit, whereas Symm-Clashes lists symmetry related clashes.

Mol	Chain	Non-H	H(model)	H(added)	Clashes	Symm-Clashes
1	A	2319	0	2299	156	0
1	B	2240	0	2218	175	0
2	A	5	0	0	1	0

Continued on next page...

Continued from previous page...

Mol	Chain	Non-H	H(model)	H(added)	Clashes	Symm-Clashes
3	A	46	0	24	1	0
3	B	46	0	24	4	0
4	A	29	0	0	1	0
4	B	27	0	0	7	0
All	All	4712	0	4565	330	0

The all-atom clashscore is defined as the number of clashes found per 1000 atoms (including hydrogen atoms). The all-atom clashscore for this structure is 36.

All (330) close contacts within the same asymmetric unit are listed below, sorted by their clash magnitude.

Atom-1	Atom-2	Interatomic distance (Å)	Clash overlap (Å)
1:A:192:GLU:HG3	1:A:193:PRO:HD2	1.24	1.19
1:B:264:SER:HB2	1:B:265:HIS:CE1	1.93	1.03
1:A:182:LYS:NZ	1:A:183:ASP:O	1.95	0.98
1:A:209:PRO:HG2	1:A:215:VAL:HG22	1.48	0.96
1:A:22:HIS:O	1:A:93:LYS:NZ	2.00	0.93
1:B:211:SER:OG	1:B:213:ASP:OD1	1.88	0.91
1:A:110:ASP:O	1:A:113:SER:OG	1.90	0.89
1:B:4:GLU:O	1:B:9:LYS:NZ	2.04	0.89
1:A:188:THR:O	1:A:191:ALA:N	2.07	0.88
1:B:112:ARG:NH2	1:B:246:THR:OG1	2.08	0.87
1:A:224:TYR:CZ	1:A:228:MET:HE2	2.09	0.86
1:B:35:ASP:OD1	1:B:38:THR:OG1	1.93	0.86
1:A:50:LEU:HD23	1:A:288:LYS:HZ3	1.40	0.85
1:B:22:HIS:CB	1:B:74:GLU:HG3	2.07	0.85
1:A:192:GLU:HG3	1:A:193:PRO:CD	2.07	0.83
1:B:264:SER:HB2	1:B:265:HIS:ND1	1.95	0.81
1:B:22:HIS:ND1	1:B:74:GLU:OE2	2.13	0.80
1:A:115:LEU:HD13	1:A:120:LEU:HD21	1.64	0.79
1:B:105:THR:O	1:B:159:HIS:NE2	2.16	0.78
1:B:3:GLU:HG2	1:B:4:GLU:H	1.48	0.78
1:B:25:VAL:HG12	1:B:26:THR:H	1.48	0.78
1:A:18:LYS:HZ3	1:A:25:VAL:H	1.31	0.78
1:B:200:SER:HB3	1:B:304:ASP:OD1	1.84	0.78
1:A:192:GLU:CG	1:A:193:PRO:HD2	2.13	0.77
1:A:232:LEU:HD21	1:A:247:LYS:HE3	1.66	0.77
1:B:42:TYR:CE1	1:B:303:VAL:HG11	2.20	0.77
1:B:176:ASP:O	1:B:180:ASN:OD1	2.03	0.77
1:A:31:LYS:NZ	1:A:297:THR:OG1	2.18	0.76
1:B:229:GLN:HB3	1:B:230:ARG:HH21	1.50	0.76

Continued on next page...

Continued from previous page...

Atom-1	Atom-2	Interatomic distance (Å)	Clash overlap (Å)
1:A:31:LYS:HZ2	1:A:293:LEU:HD11	1.51	0.76
1:B:116:THR:HG23	1:B:119:ASP:OD2	1.84	0.76
1:A:318:GLN:HG2	1:A:319:LYS:H	1.50	0.74
1:A:218:ASP:O	1:A:222:MET:HG2	1.88	0.74
1:B:264:SER:OG	1:B:311:GLY:O	2.05	0.73
1:A:267:LYS:HE3	1:A:273:MET:O	1.88	0.73
1:B:267:LYS:HG2	1:B:275:ASN:OD1	1.88	0.72
1:B:36:PRO:HD2	1:B:300:PRO:HB2	1.72	0.71
1:A:50:LEU:HD23	1:A:288:LYS:NZ	2.03	0.71
1:A:26:THR:HG21	1:A:50:LEU:HD13	1.72	0.71
1:B:68:PHE:HD2	1:B:159:HIS:HB3	1.57	0.70
1:B:19:LYS:HG3	4:B:520:HOH:O	1.92	0.70
1:B:79:GLU:O	1:B:88:LYS:HG2	1.92	0.70
1:A:27:HIS:NE2	4:A:515:HOH:O	2.23	0.69
1:B:151:PRO:HG2	1:B:246:THR:HG21	1.75	0.69
1:B:79:GLU:HA	1:B:79:GLU:OE1	1.93	0.69
1:A:149:CYS:O	1:A:248:SER:HA	1.92	0.69
1:A:209:PRO:HB2	1:A:214:GLN:HB2	1.75	0.69
1:B:22:HIS:HB3	1:B:74:GLU:HG3	1.75	0.69
1:A:290:ARG:HD2	1:A:294:GLU:OE2	1.94	0.67
1:A:188:THR:HG22	1:A:191:ALA:HB3	1.75	0.67
1:B:170:LYS:HE3	4:B:525:HOH:O	1.94	0.67
1:A:249:TYR:HB2	1:A:261:VAL:O	1.94	0.67
1:B:31:LYS:HG2	1:B:32:LYS:O	1.95	0.67
1:A:182:LYS:HG2	1:A:194:LEU:HD11	1.75	0.67
1:B:5:ASN:O	1:B:9:LYS:N	2.25	0.67
1:B:72:ASP:OD1	1:B:72:ASP:C	2.33	0.67
1:A:272:LEU:HB3	1:A:274:LEU:HG	1.76	0.67
1:B:200:SER:O	1:B:308:LEU:HD13	1.95	0.66
1:B:69:ALA:O	1:B:71:PRO:HD3	1.95	0.66
1:A:31:LYS:HE2	1:A:33:LEU:HD21	1.78	0.66
1:B:72:ASP:OD1	1:B:74:GLU:CD	2.34	0.66
1:B:110:ASP:O	1:B:113:SER:OG	2.12	0.65
1:A:232:LEU:CD2	1:A:247:LYS:HE3	2.27	0.65
1:B:16:ALA:HA	1:B:19:LYS:HE3	1.76	0.65
1:A:9:LYS:HG3	1:A:77:VAL:HG13	1.78	0.65
1:B:272:LEU:HD13	1:B:296:LEU:HD21	1.79	0.65
1:B:1:MET:O	1:B:82:ASN:HA	1.98	0.64
1:B:68:PHE:HB3	1:B:104:VAL:HG11	1.77	0.64
1:A:289:ASP:OD1	1:A:292:LYS:HD2	1.97	0.64
1:B:25:VAL:HG12	1:B:26:THR:N	2.12	0.64

Continued on next page...

Continued from previous page...

Atom-1	Atom-2	Interatomic distance (Å)	Clash overlap (Å)
1:A:318:GLN:HG2	1:A:319:LYS:HE3	1.79	0.64
1:B:3:GLU:CG	1:B:4:GLU:H	2.12	0.63
1:B:267:LYS:HA	1:B:274:LEU:O	1.98	0.63
1:A:172:ILE:O	1:A:172:ILE:HG22	1.98	0.63
1:A:252:LEU:N	1:A:252:LEU:HD12	2.14	0.62
1:B:34:LYS:HD3	1:B:41:GLN:NE2	2.14	0.62
1:B:8:GLN:NE2	4:B:506:HOH:O	2.31	0.61
1:A:188:THR:HG22	1:A:191:ALA:CB	2.31	0.61
1:A:35:ASP:HB2	1:A:42:TYR:CE2	2.36	0.61
1:B:202:ALA:N	1:B:312:PHE:O	2.31	0.61
1:B:201:PHE:HA	1:B:312:PHE:O	2.00	0.61
1:A:50:LEU:HD21	3:A:402:AMP:H5'1	1.83	0.60
1:B:50:LEU:HD21	1:B:288:LYS:HE2	1.81	0.60
1:B:17:ALA:HA	1:B:20:ASN:OD1	2.01	0.60
1:B:236:GLN:HE22	1:B:244:GLU:HB2	1.66	0.60
1:B:272:LEU:HD12	1:B:306:SER:OG	2.01	0.60
1:B:112:ARG:CZ	1:B:246:THR:OG1	2.50	0.60
1:A:267:LYS:HA	1:A:274:LEU:O	2.03	0.59
1:A:200:SER:OG	1:A:308:LEU:HB2	2.02	0.59
1:B:43:TRP:HB2	1:B:171:PHE:CD1	2.37	0.59
1:B:270:PRO:HA	1:B:273:MET:SD	2.42	0.59
1:B:29:GLU:O	1:B:46:PHE:N	2.33	0.59
1:A:164:ILE:C	1:A:164:ILE:HD13	2.22	0.59
1:B:3:GLU:HG2	1:B:4:GLU:N	2.17	0.59
1:B:66:ASP:O	1:B:69:ALA:HB3	2.03	0.59
1:A:80:ASP:HA	1:A:87:TYR:O	2.03	0.58
1:B:117:PRO:HB2	1:B:217:GLU:HG2	1.84	0.58
1:A:208:LEU:HG	1:A:257:TRP:HA	1.83	0.58
1:A:35:ASP:HB2	1:A:42:TYR:HE2	1.67	0.58
1:B:123:ALA:HB1	1:B:145:VAL:HG11	1.85	0.58
1:A:48:PRO:HA	1:A:288:LYS:O	2.04	0.58
1:A:108:PHE:C	1:A:108:PHE:CD2	2.77	0.58
1:A:14:PHE:CD1	1:A:23:LEU:HD21	2.39	0.57
1:B:194:LEU:CD1	1:B:207:PRO:HD3	2.34	0.57
1:A:225:VAL:O	1:A:229:GLN:HG2	2.04	0.57
1:B:157:GLN:HB2	1:B:161:HIS:CE1	2.39	0.57
1:A:224:TYR:CZ	1:A:228:MET:CE	2.86	0.57
1:A:171:PHE:O	1:A:172:ILE:HD12	2.04	0.56
1:A:209:PRO:CB	1:A:214:GLN:HB2	2.35	0.56
1:B:86:GLU:HB2	1:B:87:TYR:CD2	2.40	0.56
1:A:149:CYS:O	1:A:249:TYR:N	2.37	0.56

Continued on next page...

Continued from previous page...

Atom-1	Atom-2	Interatomic distance (Å)	Clash overlap (Å)
1:A:268:SER:OG	1:A:274:LEU:N	2.24	0.56
1:B:290:ARG:O	1:B:293:LEU:HB3	2.06	0.55
1:B:5:ASN:HB3	1:B:9:LYS:HG3	1.89	0.55
1:B:22:HIS:HB2	1:B:74:GLU:HG3	1.85	0.55
1:B:173:PRO:HD2	1:B:176:ASP:OD2	2.05	0.55
1:A:34:LYS:NZ	1:A:39:THR:HA	2.22	0.55
1:B:110:ASP:OD1	1:B:112:ARG:HB3	2.07	0.55
1:B:159:HIS:O	1:B:161:HIS:ND1	2.36	0.55
1:A:82:ASN:OD1	1:A:122:THR:HG23	2.06	0.55
1:A:182:LYS:NZ	1:A:185:PHE:CD2	2.68	0.55
1:B:112:ARG:NH1	1:B:151:PRO:HD3	2.22	0.55
1:B:179:CYS:HB2	1:B:256:LYS:HE3	1.89	0.55
1:B:5:ASN:O	1:B:9:LYS:HG3	2.07	0.55
1:A:268:SER:N	1:A:274:LEU:O	2.39	0.54
1:B:192:GLU:OE1	1:B:193:PRO:HD2	2.07	0.54
1:A:222:MET:HE3	1:B:225:VAL:HG13	1.88	0.54
1:A:256:LYS:HD2	1:A:256:LYS:N	2.23	0.54
1:A:79:GLU:OE1	1:A:88:LYS:HE3	2.07	0.54
1:B:156:SER:OG	3:B:401:AMP:O3P	2.19	0.54
1:A:25:VAL:HG22	1:A:95:PRO:HG2	1.90	0.54
1:B:287:VAL:HG11	1:B:296:LEU:HD11	1.90	0.54
1:A:32:LYS:NZ	1:A:170:LYS:O	2.40	0.54
1:B:162:LEU:HD12	1:B:162:LEU:N	2.22	0.54
1:B:175:GLN:HE22	1:B:282:CYS:HA	1.73	0.53
1:B:205:VAL:HG22	1:B:259:CYS:HB2	1.90	0.53
1:A:152:HIS:ND1	2:A:401:PO4:O2	2.30	0.53
1:B:152:HIS:HB2	1:B:248:SER:CB	2.38	0.53
1:B:42:TYR:CE1	1:B:303:VAL:CG1	2.92	0.53
1:B:151:PRO:HG2	1:B:246:THR:CG2	2.38	0.53
1:B:194:LEU:HD11	1:B:207:PRO:HD3	1.91	0.52
1:A:115:LEU:HD12	1:A:224:TYR:CE1	2.44	0.52
1:B:28:ALA:HB1	1:B:45:THR:HG23	1.92	0.52
1:B:93:LYS:HE3	3:B:401:AMP:N6	2.24	0.52
1:B:78:THR:HG22	1:B:80:ASP:N	2.24	0.52
1:A:228:MET:HE3	1:A:249:TYR:CZ	2.45	0.52
1:A:111:GLN:NE2	1:A:147:TYR:CE1	2.78	0.52
1:B:116:THR:O	1:B:119:ASP:HB2	2.10	0.52
1:A:146:PHE:HB2	1:A:278:SER:CB	2.39	0.52
1:B:2:ILE:HG13	1:B:125:ASN:HB3	1.90	0.52
1:B:25:VAL:CG1	1:B:26:THR:H	2.20	0.51
1:B:121:MET:HE2	1:B:216:ASP:HA	1.92	0.51

Continued on next page...

Continued from previous page...

Atom-1	Atom-2	Interatomic distance (Å)	Clash overlap (Å)
1:B:96:VAL:HB	3:B:402:AMP:N3	2.25	0.51
1:B:200:SER:HB2	1:B:308:LEU:HB2	1.92	0.51
1:B:48:PRO:HA	1:B:288:LYS:O	2.10	0.51
1:B:16:ALA:O	1:B:19:LYS:HG2	2.11	0.51
1:A:204:PHE:HB3	1:A:227:LEU:HD22	1.91	0.51
1:A:127:LEU:HD21	1:A:145:VAL:HG23	1.91	0.51
1:B:184:HIS:CD2	1:B:209:PRO:HG3	2.45	0.51
1:A:49:SER:O	1:A:52:LEU:HB2	2.11	0.51
1:A:18:LYS:NZ	1:A:25:VAL:H	2.06	0.51
3:B:402:AMP:H1'	4:B:501:HOH:O	2.09	0.50
1:B:105:THR:HG21	1:B:109:LYS:HD2	1.92	0.50
1:B:105:THR:OG1	1:B:159:HIS:NE2	2.38	0.50
1:B:81:LEU:N	1:B:87:TYR:O	2.33	0.50
1:A:101:SER:HB2	1:A:164:ILE:CG2	2.41	0.50
1:A:108:PHE:HA	1:A:159:HIS:NE2	2.26	0.50
1:A:224:TYR:CE1	1:A:228:MET:HE2	2.47	0.50
1:B:130:LEU:HD12	1:B:164:ILE:HD11	1.94	0.50
1:A:218:ASP:O	1:A:222:MET:CG	2.58	0.50
1:B:170:LYS:CE	4:B:525:HOH:O	2.57	0.50
1:A:272:LEU:HD13	1:A:296:LEU:HD21	1.94	0.49
1:A:88:LYS:HD3	1:A:106:SER:HA	1.93	0.49
1:B:215:VAL:HA	1:B:219:LEU:HD22	1.93	0.49
1:A:270:PRO:HD2	1:A:309:GLN:NE2	2.28	0.49
1:A:101:SER:HB2	1:A:164:ILE:HG23	1.93	0.49
1:B:141:GLU:O	1:B:141:GLU:HG3	2.11	0.49
1:A:251:VAL:C	1:A:252:LEU:HD12	2.32	0.49
1:A:97:VAL:O	1:A:98:PRO:C	2.50	0.49
1:B:255:LYS:N	4:B:507:HOH:O	2.42	0.49
1:A:269:GLY:HA3	1:A:309:GLN:NE2	2.28	0.49
1:B:115:LEU:HD12	1:B:224:TYR:CE1	2.48	0.49
1:A:175:GLN:O	1:A:179:CYS:HB2	2.13	0.49
1:A:196:ASP:N	1:A:203:HIS:NE2	2.58	0.49
1:A:293:LEU:O	1:A:293:LEU:HD12	2.13	0.48
1:B:108:PHE:C	1:B:108:PHE:CD2	2.86	0.48
1:B:200:SER:CB	1:B:308:LEU:HB2	2.43	0.48
1:B:81:LEU:HB3	1:B:87:TYR:HB2	1.96	0.48
1:A:9:LYS:HG3	1:A:77:VAL:CG1	2.43	0.48
1:A:32:LYS:O	1:A:33:LEU:HD23	2.13	0.47
1:A:319:LYS:HE3	1:A:319:LYS:H	1.78	0.47
1:A:182:LYS:HZ2	1:A:207:PRO:HG2	1.80	0.47
1:B:90:LEU:HD22	1:B:104:VAL:HG21	1.95	0.47

Continued on next page...

Continued from previous page...

Atom-1	Atom-2	Interatomic distance (Å)	Clash overlap (Å)
1:B:111:GLN:OE1	1:B:160:LYS:HA	2.13	0.47
1:B:23:LEU:C	1:B:23:LEU:HD12	2.35	0.47
1:B:105:THR:O	1:B:159:HIS:CE1	2.66	0.47
1:B:176:ASP:HA	1:B:256:LYS:CE	2.45	0.47
1:A:204:PHE:CB	1:A:227:LEU:HD22	2.45	0.47
1:B:224:TYR:OH	1:B:249:TYR:OH	2.29	0.47
1:A:72:ASP:O	1:A:75:LEU:HB2	2.14	0.47
1:B:68:PHE:HB2	1:B:159:HIS:ND1	2.30	0.47
1:A:88:LYS:CD	1:A:106:SER:HA	2.45	0.47
1:B:177:VAL:CG2	1:B:178:LEU:N	2.77	0.47
1:A:48:PRO:O	1:A:51:ALA:HB3	2.14	0.47
1:B:3:GLU:OE2	1:B:9:LYS:HE2	2.14	0.47
1:B:88:LYS:HE3	1:B:106:SER:HB3	1.97	0.47
1:B:29:GLU:N	1:B:46:PHE:O	2.39	0.47
1:A:131:GLN:NE2	1:A:143:TYR:H	2.13	0.47
1:A:228:MET:HE1	1:A:249:TYR:CE1	2.49	0.46
1:A:269:GLY:HA3	1:A:270:PRO:HD2	1.58	0.46
1:A:224:TYR:OH	1:A:228:MET:CE	2.64	0.46
1:A:18:LYS:HD3	1:A:25:VAL:HG23	1.97	0.46
1:A:14:PHE:HD1	1:A:23:LEU:HD21	1.79	0.46
1:A:188:THR:H	1:A:191:ALA:HB3	1.81	0.46
1:A:172:ILE:O	1:A:172:ILE:CG2	2.64	0.46
1:B:159:HIS:HD2	1:B:160:LYS:N	2.13	0.46
1:B:15:VAL:O	1:B:19:LYS:HG2	2.16	0.46
1:A:22:HIS:CG	1:A:74:GLU:HG2	2.51	0.46
1:B:19:LYS:HD2	4:B:520:HOH:O	2.15	0.46
1:A:20:ASN:HB2	1:A:22:HIS:CE1	2.51	0.46
1:B:229:GLN:CB	1:B:230:ARG:HH21	2.24	0.46
1:A:49:SER:O	1:A:52:LEU:N	2.47	0.46
1:B:142:ARG:HB2	1:B:167:MET:HE3	1.97	0.46
1:A:38:THR:C	1:A:39:THR:HG23	2.36	0.46
1:B:80:ASP:OD1	1:B:82:ASN:O	2.34	0.46
1:A:72:ASP:OD2	1:A:74:GLU:HB3	2.16	0.46
1:A:226:SER:O	1:A:229:GLN:HG3	2.15	0.46
1:A:131:GLN:O	1:A:132:GLY:C	2.54	0.45
1:B:146:PHE:CD1	1:B:278:SER:HB2	2.51	0.45
1:B:307:LEU:O	1:B:311:GLY:N	2.49	0.45
1:A:252:LEU:CD1	1:A:252:LEU:N	2.79	0.45
1:B:290:ARG:O	1:B:294:GLU:HG2	2.16	0.45
1:A:318:GLN:HG2	1:A:319:LYS:N	2.24	0.45
1:B:72:ASP:O	1:B:76:VAL:HG23	2.16	0.45

Continued on next page...

Continued from previous page...

Atom-1	Atom-2	Interatomic distance (Å)	Clash overlap (Å)
1:B:38:THR:O	1:B:39:THR:OG1	2.25	0.45
1:A:18:LYS:NZ	1:A:25:VAL:HB	2.31	0.45
1:B:177:VAL:HG22	1:B:178:LEU:N	2.31	0.45
1:B:127:LEU:HD23	1:B:127:LEU:HA	1.76	0.45
1:A:144:LEU:HB2	1:A:167:MET:CG	2.47	0.45
1:B:23:LEU:HD12	1:B:23:LEU:O	2.16	0.45
1:A:222:MET:HE2	1:B:229:GLN:HG3	1.98	0.45
1:B:267:LYS:CG	1:B:275:ASN:OD1	2.61	0.45
1:A:148:ASN:OD1	1:A:277:ASN:HB2	2.17	0.45
1:B:35:ASP:HA	1:B:36:PRO:HD2	1.80	0.45
1:B:25:VAL:CG1	1:B:26:THR:N	2.80	0.45
1:A:270:PRO:HG2	1:A:271:PRO:HD3	2.00	0.44
1:B:28:ALA:HB1	1:B:45:THR:CG2	2.47	0.44
1:A:204:PHE:O	1:A:259:CYS:HA	2.16	0.44
1:A:195:GLN:HG3	1:A:203:HIS:CE1	2.52	0.44
1:B:143:TYR:CD2	1:B:143:TYR:N	2.84	0.44
1:B:105:THR:HG1	1:B:159:HIS:CD2	2.34	0.44
1:A:103:LEU:HB3	1:A:162:LEU:HB2	1.99	0.44
1:A:185:PHE:CD2	1:A:185:PHE:N	2.86	0.44
1:A:270:PRO:HA	1:A:273:MET:SD	2.56	0.44
1:B:235:PHE:O	1:B:236:GLN:OE1	2.35	0.44
1:B:2:ILE:HG13	1:B:125:ASN:CB	2.46	0.44
1:A:26:THR:HG21	1:A:50:LEU:CD1	2.44	0.44
1:B:108:PHE:CD2	1:B:109:LYS:N	2.86	0.44
1:B:247:LYS:O	1:B:247:LYS:HG3	2.17	0.44
1:A:33:LEU:HB2	1:A:42:TYR:HB2	2.00	0.44
1:A:87:TYR:HB3	1:A:103:LEU:CD2	2.48	0.44
1:B:22:HIS:CG	1:B:74:GLU:HG3	2.53	0.44
1:B:80:ASP:OD2	1:B:82:ASN:O	2.35	0.43
1:A:171:PHE:C	1:A:172:ILE:HD12	2.39	0.43
1:B:173:PRO:O	1:B:176:ASP:HB2	2.18	0.43
1:A:31:LYS:HZ2	1:A:293:LEU:CD1	2.27	0.43
1:B:80:ASP:C	1:B:80:ASP:OD2	2.56	0.43
1:B:117:PRO:HB2	1:B:217:GLU:CG	2.47	0.43
1:B:30:SER:HA	1:B:44:VAL:O	2.19	0.43
1:B:287:VAL:HG11	1:B:296:LEU:CD1	2.48	0.43
1:A:301:HIS:O	1:A:304:ASP:HB3	2.19	0.43
1:A:192:GLU:CG	1:A:193:PRO:CD	2.86	0.43
1:B:215:VAL:HA	1:B:219:LEU:CD2	2.49	0.43
1:B:236:GLN:NE2	1:B:244:GLU:HB2	2.32	0.43
1:A:105:THR:OG1	1:A:159:HIS:NE2	2.51	0.43

Continued on next page...

Continued from previous page...

Atom-1	Atom-2	Interatomic distance (Å)	Clash overlap (Å)
1:A:185:PHE:HD2	1:A:185:PHE:N	2.16	0.43
1:A:22:HIS:CD2	1:A:72:ASP:OD2	2.72	0.43
1:A:318:GLN:CG	1:A:319:LYS:H	2.27	0.43
1:B:66:ASP:HA	1:B:67:PRO:HD2	1.90	0.43
1:A:24:LYS:O	1:A:95:PRO:HD2	2.18	0.43
1:B:176:ASP:C	1:B:180:ASN:OD1	2.57	0.43
1:A:249:TYR:CB	1:A:261:VAL:O	2.65	0.42
1:B:146:PHE:HA	1:B:251:VAL:O	2.19	0.42
1:A:2:ILE:HG22	1:A:3:GLU:O	2.18	0.42
1:A:35:ASP:O	1:A:39:THR:N	2.43	0.42
1:B:152:HIS:HB2	1:B:248:SER:HB2	2.00	0.42
1:A:90:LEU:HD12	1:A:90:LEU:N	2.34	0.42
1:B:50:LEU:HD22	1:B:50:LEU:C	2.40	0.42
1:A:228:MET:HE3	1:A:249:TYR:OH	2.20	0.42
1:B:90:LEU:O	1:B:102:LEU:N	2.35	0.42
1:B:86:GLU:HB2	1:B:87:TYR:CE2	2.54	0.42
1:A:208:LEU:HG	1:A:257:TRP:CA	2.50	0.42
1:A:89:LEU:HD12	1:A:102:LEU:O	2.19	0.42
1:A:224:TYR:CE1	1:A:228:MET:CE	3.03	0.42
1:B:176:ASP:HA	1:B:256:LYS:HE2	2.02	0.42
1:B:86:GLU:O	1:B:106:SER:OG	2.37	0.42
1:B:199:VAL:HG23	1:B:201:PHE:H	1.85	0.42
1:B:22:HIS:CG	1:B:74:GLU:OE2	2.73	0.42
1:B:112:ARG:HH11	1:B:151:PRO:HD3	1.85	0.41
1:B:256:LYS:HG2	1:B:257:TRP:HD1	1.85	0.41
1:A:131:GLN:HE22	1:A:143:TYR:H	1.68	0.41
1:B:250:ASN:OD1	1:B:263:ARG:NH1	2.49	0.41
1:A:6:LEU:HB3	1:A:129:SER:OG	2.20	0.41
1:A:185:PHE:H	1:A:185:PHE:HD2	1.68	0.41
1:A:185:PHE:HE2	1:A:207:PRO:HD2	1.85	0.41
1:A:149:CYS:O	1:A:248:SER:CA	2.67	0.41
1:A:159:HIS:O	1:A:160:LYS:C	2.58	0.41
1:B:149:CYS:O	1:B:248:SER:HA	2.19	0.41
1:B:220:LEU:HD23	1:B:220:LEU:HA	1.81	0.41
1:B:13:LYS:HE2	1:B:76:VAL:O	2.20	0.41
1:A:4:GLU:HA	1:A:4:GLU:OE1	2.21	0.41
1:A:117:PRO:HB3	1:A:217:GLU:HG2	2.01	0.41
1:A:224:TYR:OH	1:A:228:MET:HE2	2.19	0.41
1:A:272:LEU:HA	1:A:272:LEU:HD23	1.73	0.41
1:B:269:GLY:C	1:B:271:PRO:HD2	2.41	0.41
1:B:105:THR:OG1	1:B:159:HIS:CD2	2.74	0.41

Continued on next page...

Continued from previous page...

Atom-1	Atom-2	Interatomic distance (Å)	Clash overlap (Å)
1:A:146:PHE:HB2	1:A:278:SER:HB2	2.00	0.41
1:B:261:VAL:HG11	1:B:281:TYR:CD1	2.56	0.41
1:B:75:LEU:HA	1:B:75:LEU:HD23	1.82	0.41
1:B:229:GLN:HB3	1:B:230:ARG:NH2	2.29	0.40
1:A:195:GLN:HB3	1:A:316:ALA:HB2	2.02	0.40
1:B:285:ILE:H	1:B:285:ILE:HG12	1.74	0.40
1:B:4:GLU:O	1:B:5:ASN:HB2	2.21	0.40
1:A:296:LEU:HD22	1:A:303:VAL:CG2	2.52	0.40
1:B:184:HIS:HB2	1:B:208:LEU:C	2.41	0.40
1:B:279:THR:HB	1:B:284:MET:HB2	2.03	0.40
1:A:35:ASP:HA	1:A:36:PRO:HD2	1.82	0.40
1:A:143:TYR:CD1	1:A:164:ILE:HD11	2.56	0.40
1:B:30:SER:OG	1:B:45:THR:HA	2.22	0.40
1:A:126:VAL:O	1:A:130:LEU:HG	2.22	0.40

There are no symmetry-related clashes.

5.3 Torsion angles [i](#)

5.3.1 Protein backbone [i](#)

In the following table, the Percentiles column shows the percent Ramachandran outliers of the chain as a percentile score with respect to all X-ray entries followed by that with respect to entries of similar resolution.

The Analysed column shows the number of residues for which the backbone conformation was analysed, and the total number of residues.

Mol	Chain	Analysed	Favoured	Allowed	Outliers	Percentiles	
1	A	284/333 (85%)	267 (94%)	17 (6%)	0	100	100
1	B	272/333 (82%)	255 (94%)	17 (6%)	0	100	100
All	All	556/666 (84%)	522 (94%)	34 (6%)	0	100	100

There are no Ramachandran outliers to report.

5.3.2 Protein sidechains [i](#)

In the following table, the Percentiles column shows the percent sidechain outliers of the chain as a percentile score with respect to all X-ray entries followed by that with respect to entries of similar resolution.

The Analysed column shows the number of residues for which the sidechain conformation was analysed, and the total number of residues.

Mol	Chain	Analysed	Rotameric	Outliers	Percentiles	
1	A	266/304 (88%)	242 (91%)	24 (9%)	12	34
1	B	258/304 (85%)	239 (93%)	19 (7%)	17	43
All	All	524/608 (86%)	481 (92%)	43 (8%)	14	38

All (43) residues with a non-rotameric sidechain are listed below:

Mol	Chain	Res	Type
1	A	1	MET
1	A	2	ILE
1	A	20	ASN
1	A	31	LYS
1	A	32	LYS
1	A	37	GLN
1	A	39	THR
1	A	49	SER
1	A	52	LEU
1	A	88	LYS
1	A	90	LEU
1	A	103	LEU
1	A	164	ILE
1	A	177	VAL
1	A	183	ASP
1	A	185	PHE
1	A	222	MET
1	A	228	MET
1	A	229	GLN
1	A	247	LYS
1	A	252	LEU
1	A	273	MET
1	A	290	ARG
1	A	319	LYS
1	B	35	ASP
1	B	50	LEU
1	B	72	ASP
1	B	102	LEU
1	B	106	SER
1	B	116	THR
1	B	140	CYS
1	B	142	ARG
1	B	160	LYS

Continued on next page...

Continued from previous page...

Mol	Chain	Res	Type
1	B	184	HIS
1	B	192	GLU
1	B	236	GLN
1	B	245	LEU
1	B	259	CYS
1	B	264	SER
1	B	265	HIS
1	B	285	ILE
1	B	288	LYS
1	B	297	THR

Some sidechains can be flipped to improve hydrogen bonding and reduce clashes. All (2) such sidechains are listed below:

Mol	Chain	Res	Type
1	B	100	HIS
1	B	163	GLN

5.3.3 RNA [i](#)

There are no RNA molecules in this entry.

5.4 Non-standard residues in protein, DNA, RNA chains [i](#)

There are no non-standard protein/DNA/RNA residues in this entry.

5.5 Carbohydrates [i](#)

There are no carbohydrates in this entry.

5.6 Ligand geometry [i](#)

5 ligands are modelled in this entry.

In the following table, the Counts columns list the number of bonds (or angles) for which Mogul statistics could be retrieved, the number of bonds (or angles) that are observed in the model and the number of bonds (or angles) that are defined in the chemical component dictionary. The Link column lists molecule types, if any, to which the group is linked. The Z score for a bond length (or angle) is the number of standard deviations the observed value is removed from the expected value. A bond length (or angle) with $|Z| > 2$ is considered an outlier worth inspection. RMSZ is the root-mean-square of all Z scores of the bond lengths (or angles).

Mol	Type	Chain	Res	Link	Bond lengths			Bond angles		
					Counts	RMSZ	# Z > 2	Counts	RMSZ	# Z > 2
2	PO4	A	401	-	4,4,4	0.44	0	6,6,6	0.27	0
3	AMP	A	402	-	20,25,25	0.94	1 (5%)	22,38,38	1.90	6 (27%)
3	AMP	A	403	-	20,25,25	0.95	1 (5%)	22,38,38	2.41	6 (27%)
3	AMP	B	401	-	20,25,25	0.90	1 (5%)	22,38,38	2.06	4 (18%)
3	AMP	B	402	-	20,25,25	0.97	1 (5%)	22,38,38	1.86	4 (18%)

In the following table, the Chirals column lists the number of chiral outliers, the number of chiral centers analysed, the number of these observed in the model and the number defined in the chemical component dictionary. Similar counts are reported in the Torsion and Rings columns. '-' means no outliers of that kind were identified.

Mol	Type	Chain	Res	Link	Chirals	Torsions	Rings
2	PO4	A	401	-	-	0/0/0/0	0/0/0/0
3	AMP	A	402	-	-	0/6/26/26	0/3/3/3
3	AMP	A	403	-	-	0/6/26/26	0/3/3/3
3	AMP	B	401	-	-	0/6/26/26	0/3/3/3
3	AMP	B	402	-	-	0/6/26/26	0/3/3/3

All (4) bond length outliers are listed below:

Mol	Chain	Res	Type	Atoms	Z	Observed(Å)	Ideal(Å)
3	A	403	AMP	C5-C4	2.85	1.46	1.40
3	B	401	AMP	C5-C4	3.01	1.47	1.40
3	A	402	AMP	C5-C4	3.02	1.47	1.40
3	B	402	AMP	C5-C4	3.32	1.48	1.40

All (20) bond angle outliers are listed below:

Mol	Chain	Res	Type	Atoms	Z	Observed(°)	Ideal(°)
3	A	403	AMP	N3-C2-N1	-8.76	122.19	128.89
3	B	401	AMP	N3-C2-N1	-7.23	123.36	128.89
3	A	402	AMP	N3-C2-N1	-6.60	123.84	128.89
3	B	402	AMP	N3-C2-N1	-6.35	124.03	128.89
3	A	403	AMP	C1'-N9-C4	-4.72	119.82	126.94
3	B	402	AMP	C4-C5-N7	-3.50	106.26	109.48
3	B	401	AMP	C4-C5-N7	-3.49	106.27	109.48
3	B	401	AMP	C1'-N9-C4	-2.85	122.64	126.94
3	A	402	AMP	C4-C5-N7	-2.65	107.05	109.48
3	B	402	AMP	O3P-P-O5'	-2.58	99.12	106.56
3	A	402	AMP	O3P-P-O5'	-2.57	99.17	106.56
3	A	402	AMP	C1'-N9-C4	-2.49	123.18	126.94

Continued on next page...

Continued from previous page...

Mol	Chain	Res	Type	Atoms	Z	Observed(°)	Ideal(°)
3	A	403	AMP	O3P-P-O5'	-2.05	100.65	106.56
3	A	403	AMP	C4-C5-N7	-2.04	107.60	109.48
3	A	402	AMP	C2-N1-C6	2.05	122.42	118.77
3	A	403	AMP	C2-N1-C6	2.23	122.75	118.77
3	B	402	AMP	O2P-P-O1P	2.35	118.16	110.58
3	A	403	AMP	O2P-P-O1P	2.39	118.27	110.58
3	B	401	AMP	O2P-P-O1P	2.42	118.36	110.58
3	A	402	AMP	O2P-P-O1P	2.46	118.50	110.58

There are no chirality outliers.

There are no torsion outliers.

There are no ring outliers.

4 monomers are involved in 6 short contacts:

Mol	Chain	Res	Type	Clashes	Symm-Clashes
2	A	401	PO4	1	0
3	A	402	AMP	1	0
3	B	401	AMP	2	0
3	B	402	AMP	2	0

5.7 Other polymers [i](#)

There are no such residues in this entry.

5.8 Polymer linkage issues [i](#)

There are no chain breaks in this entry.

6 Fit of model and data

6.1 Protein, DNA and RNA chains

In the following table, the column labelled ‘#RSRZ> 2’ contains the number (and percentage) of RSRZ outliers, followed by percent RSRZ outliers for the chain as percentile scores relative to all X-ray entries and entries of similar resolution. The OWAB column contains the minimum, median, 95th percentile and maximum values of the occupancy-weighted average B-factor per residue. The column labelled ‘Q< 0.9’ lists the number of (and percentage) of residues with an average occupancy less than 0.9.

Mol	Chain	Analysed	<RSRZ>	#RSRZ>2	OWAB(Å ²)	Q<0.9
1	A	292/333 (87%)	-0.02	14 (4%) 34 23	38, 56, 97, 172	0
1	B	282/333 (84%)	0.04	9 (3%) 51 39	45, 68, 94, 117	0
All	All	574/666 (86%)	0.01	23 (4%) 42 30	38, 63, 96, 172	0

All (23) RSRZ outliers are listed below:

Mol	Chain	Res	Type	RSRZ
1	A	189	PHE	5.9
1	A	245	LEU	4.9
1	B	184	HIS	4.5
1	A	185	PHE	4.1
1	A	181	GLY	3.7
1	B	50	LEU	3.6
1	B	42	TYR	3.3
1	A	319	LYS	3.2
1	A	190	ASN	2.9
1	A	236	GLN	2.8
1	B	291	GLU	2.6
1	B	288	LYS	2.5
1	A	14	PHE	2.5
1	B	296	LEU	2.5
1	B	260	VAL	2.4
1	A	1	MET	2.4
1	A	318	GLN	2.3
1	A	186	LEU	2.3
1	B	34	LYS	2.2
1	A	15	VAL	2.1
1	A	188	THR	2.1
1	A	184	HIS	2.1
1	B	295	ASN	2.0

6.2 Non-standard residues in protein, DNA, RNA chains [i](#)

There are no non-standard protein/DNA/RNA residues in this entry.

6.3 Carbohydrates [i](#)

There are no carbohydrates in this entry.

6.4 Ligands [i](#)

In the following table, the Atoms column lists the number of modelled atoms in the group and the number defined in the chemical component dictionary. LLDF column lists the quality of electron density of the group with respect to its neighbouring residues in protein, DNA or RNA chains. The B-factors column lists the minimum, median, 95th percentile and maximum values of B factors of atoms in the group. The column labelled 'Q< 0.9' lists the number of atoms with occupancy less than 0.9.

Mol	Type	Chain	Res	Atoms	RSCC	RSR	LLDF	B-factors(\AA^2)	Q<0.9
3	AMP	A	403	23/23	0.94	0.18	0.48	48,55,66,67	0
3	AMP	B	402	23/23	0.89	0.23	0.36	61,68,132,136	0
3	AMP	A	402	23/23	0.95	0.16	-0.30	43,52,68,75	0
3	AMP	B	401	23/23	0.97	0.11	-1.45	52,61,67,70	0
2	PO4	A	401	5/5	0.97	0.09	-1.84	46,64,68,80	0

6.5 Other polymers [i](#)

There are no such residues in this entry.