



Full wwPDB X-ray Structure Validation Report ⓘ

Feb 1, 2016 – 02:40 AM GMT

PDB ID : 2I66
Title : Structural Basis for the Mechanistic Understanding Human CD38 Controlled Multiple Catalysis
Authors : Liu, Q.; Kriksunov, I.A.; Graeff, R.; Munshi, C.; Lee, H.C.; Hao, Q.
Deposited on : 2006-08-28
Resolution : 1.70 Å(reported)

This is a Full wwPDB X-ray Structure Validation Report for a publicly released PDB entry.
We welcome your comments at validation@mail.wwpdb.org
A user guide is available at
<http://wwpdb.org/validation/2016/XrayValidationReportHelp>
with specific help available everywhere you see the ⓘ symbol.

The following versions of software and data (see [references ⓘ](#)) were used in the production of this report:

MolProbity : 4.02b-467
Mogul : 1.7 (RC4), CSD as536be (2015)
Xtriage (Phenix) : 1.9-1692
EDS : rb-20026688
Percentile statistics : 20151230.v01 (using entries in the PDB archive December 30th 2015)
Refmac : 5.8.0135
CCP4 : 6.5.0
Ideal geometry (proteins) : Engh & Huber (2001)
Ideal geometry (DNA, RNA) : Parkinson et al. (1996)
Validation Pipeline (wwPDB-VP) : trunk26865

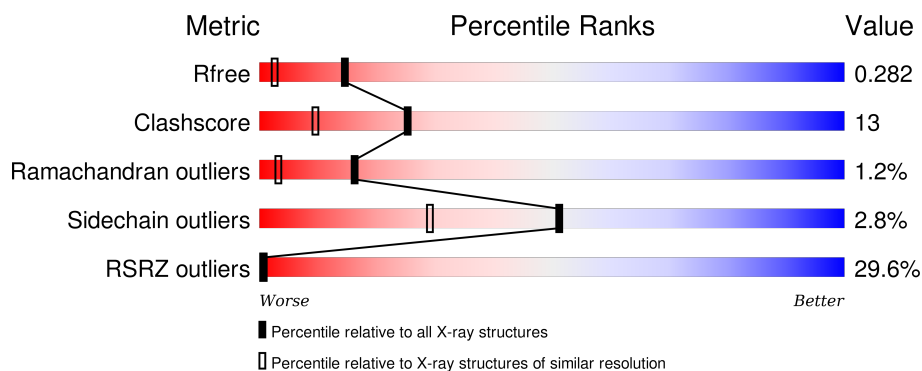
1 Overall quality at a glance

The following experimental techniques were used to determine the structure:

X-RAY DIFFRACTION

The reported resolution of this entry is 1.70 Å.

Percentile scores (ranging between 0-100) for global validation metrics of the entry are shown in the following graphic. The table shows the number of entries on which the scores are based.



Metric	Whole archive (#Entries)	Similar resolution (#Entries, resolution range(Å))
R_{free}	91344	3190 (1.70-1.70)
Clashscore	102246	3585 (1.70-1.70)
Ramachandran outliers	100387	3527 (1.70-1.70)
Sidechain outliers	100360	3527 (1.70-1.70)
RSRZ outliers	91569	3200 (1.70-1.70)

The table below summarises the geometric issues observed across the polymeric chains and their fit to the electron density. The red, orange, yellow and green segments on the lower bar indicate the fraction of residues that contain outliers for ≥ 3 , 2, 1 and 0 types of geometric quality criteria. A grey segment represents the fraction of residues that are not modelled. The numeric value for each fraction is indicated below the corresponding segment, with a dot representing fractions $\leq 5\%$. The upper red bar (where present) indicates the fraction of residues that have poor fit to the electron density. The numeric value is given above the bar.

Mol	Chain	Length	Quality of chain
1	A	262	<div> <div>27%</div> <div>76%</div> <div>19%</div> <div>• •</div> </div>
1	B	262	<div> <div>30%</div> <div>75%</div> <div>19%</div> <div>• •</div> </div>

The following table lists non-polymeric compounds, carbohydrate monomers and non-standard residues in protein, DNA, RNA chains that are outliers for geometric or electron-density-fit criteria:

Mol	Type	Chain	Res	Chirality	Geometry	Clashes	Electron density
2	G1R	A	301	X	-	-	-
3	G2R	B	302	-	-	-	X

2 Entry composition

There are 4 unique types of molecules in this entry. The entry contains 4690 atoms, of which 0 are hydrogens and 0 are deuteriums.

In the tables below, the ZeroOcc column contains the number of atoms modelled with zero occupancy, the AltConf column contains the number of residues with at least one atom in alternate conformation and the Trace column contains the number of residues modelled with at most 2 atoms.

- Molecule 1 is a protein called ADP-ribosyl cyclase 1.

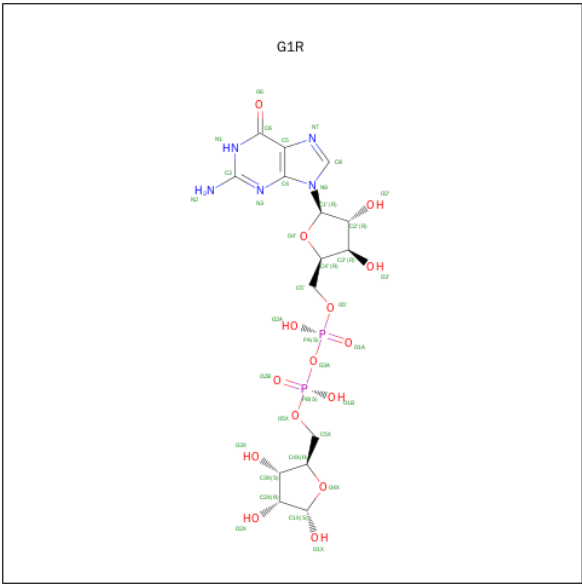
Mol	Chain	Residues	Atoms					ZeroOcc	AltConf	Trace
1	A	252	Total	C	N	O	S	0	0	0
			2050	1290	358	386	16			
1	B	252	Total	C	N	O	S	0	0	0
			2050	1290	358	386	16			

There are 22 discrepancies between the modelled and reference sequences:

Chain	Residue	Modelled	Actual	Comment	Reference
A	39	LYS	-	CLONING ARTIFACT	UNP P28907
A	40	ARG	-	CLONING ARTIFACT	UNP P28907
A	41	GLU	-	CLONING ARTIFACT	UNP P28907
A	42	ALA	-	CLONING ARTIFACT	UNP P28907
A	43	GLU	-	CLONING ARTIFACT	UNP P28907
A	44	ALA	-	CLONING ARTIFACT	UNP P28907
A	49	THR	GLN	ENGINEERED	UNP P28907
A	100	ASP	ASN	ENGINEERED	UNP P28907
A	164	ASP	ASN	ENGINEERED	UNP P28907
A	209	ASP	ASN	ENGINEERED	UNP P28907
A	219	ASP	ASN	ENGINEERED	UNP P28907
B	39	LYS	-	CLONING ARTIFACT	UNP P28907
B	40	ARG	-	CLONING ARTIFACT	UNP P28907
B	41	GLU	-	CLONING ARTIFACT	UNP P28907
B	42	ALA	-	CLONING ARTIFACT	UNP P28907
B	43	GLU	-	CLONING ARTIFACT	UNP P28907
B	44	ALA	-	CLONING ARTIFACT	UNP P28907
B	49	THR	GLN	ENGINEERED	UNP P28907
B	100	ASP	ASN	ENGINEERED	UNP P28907
B	164	ASP	ASN	ENGINEERED	UNP P28907
B	209	ASP	ASN	ENGINEERED	UNP P28907
B	219	ASP	ASN	ENGINEERED	UNP P28907

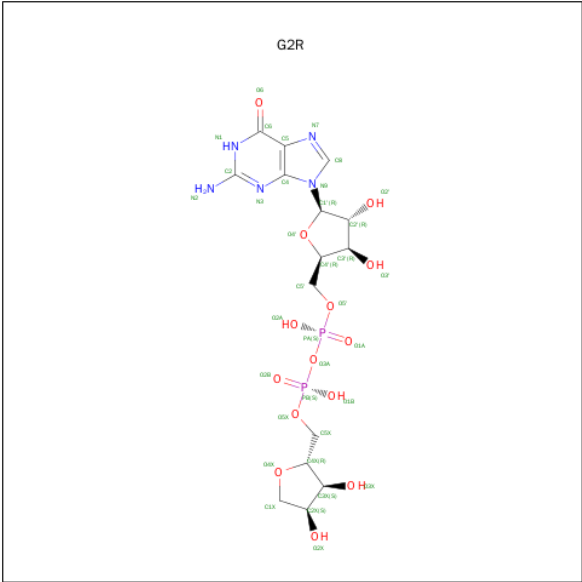
- Molecule 2 is [(2R,3R,4R,5R)-5-(2-AMINO-6-OXO-1,6-DIHYDRO-9H-PURIN-9-YL)-3,4-DIHYDROXYTETRAHYDROFURAN-2-YL]METHYL [(2R,3S,4R,5S)-3,4,5-TRIHYDROX

YTETRAHYDROFURAN-2-YL]METHYL DIHYDROGEN DIPHOSPHATE (three-letter code: G1R) (formula: C₁₅H₂₃N₅O₁₅P₂).



Mol	Chain	Residues	Atoms					ZeroOcc	AltConf
2	A	1	Total	C	N	O	P	0	0
			36	15	5	14	2		
2	A	1	Total	C	N	O	P	0	0
			37	15	5	15	2		
2	B	1	Total	C	N	O	P	0	0
			37	15	5	15	2		

- Molecule 3 is [(2R,3R,4R,5R)-5-(2-AMINO-6-OXO-1,6-DIHYDRO-9H-PURIN-9-YL)-3,4-DIHYDROXYTETRAHYDROFURAN-2-YL]METHYL [(2R,3S,4S)-3,4-DIHYDROXYTETRAHYDROFURAN-2-YL]METHYL DIHYDROGEN DIPHOSPHATE (three-letter code: G2R) (formula: C₁₅H₂₃N₅O₁₄P₂).



Mol	Chain	Residues	Atoms					ZeroOcc	AltConf
3	B	1	Total	C	N	O	P	0	0
			36	15	5	14	2		

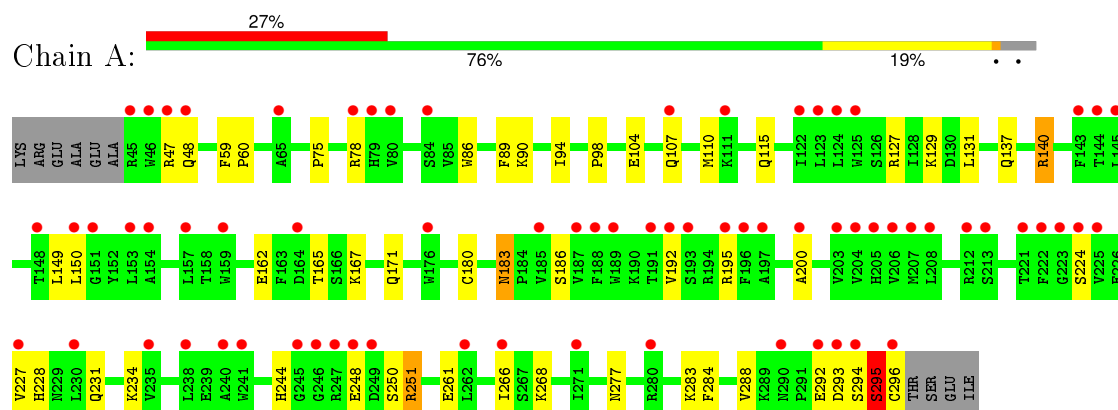
- Molecule 4 is water.

Mol	Chain	Residues	Atoms		ZeroOcc	AltConf
4	A	235	Total	O	0	0
			235	235		
4	B	209	Total	O	0	0
			209	209		

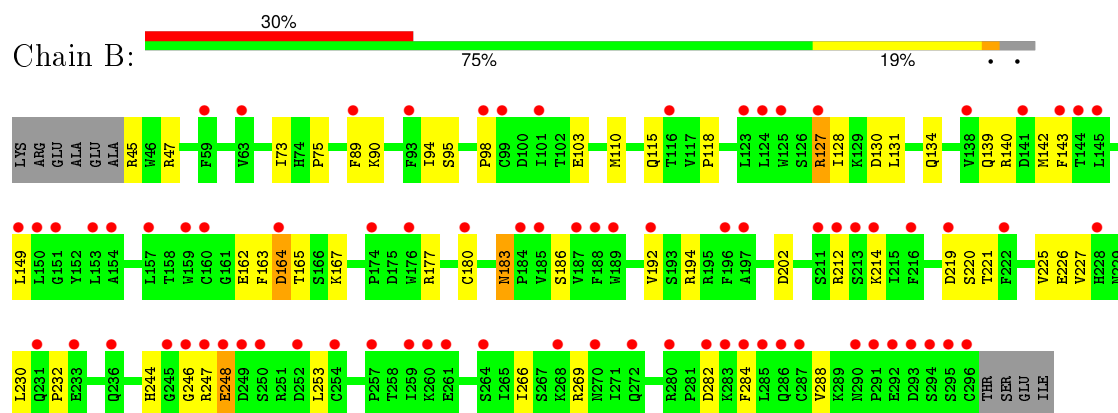
3 Residue-property plots

These plots are drawn for all protein, RNA and DNA chains in the entry. The first graphic for a chain summarises the proportions of errors displayed in the second graphic. The second graphic shows the sequence view annotated by issues in geometry and electron density. Residues are color-coded according to the number of geometric quality criteria for which they contain at least one outlier: green = 0, yellow = 1, orange = 2 and red = 3 or more. A red dot above a residue indicates a poor fit to the electron density ($RSRZ > 2$). Stretches of 2 or more consecutive residues without any outlier are shown as a green connector. Residues present in the sample, but not in the model, are shown in grey.

• Molecule 1: ADP-ribosyl cyclase 1



• Molecule 1: ADP-ribosyl cyclase 1



4 Data and refinement statistics

Property	Value	Source
Space group	P 1	Depositor
Cell constants a, b, c, α , β , γ	41.71Å 52.81Å 65.42Å 105.93° 91.80° 95.22°	Depositor
Resolution (Å)	20.00 – 1.70 25.77 – 1.70	Depositor EDS
% Data completeness (in resolution range)	100.0 (20.00-1.70) 87.8 (25.77-1.70)	Depositor EDS
R_{merge}	(Not available)	Depositor
R_{sym}	(Not available)	Depositor
$\langle I/\sigma(I) \rangle$ ¹	2.53 (at 1.71Å)	Xtriage
Refinement program	REFMAC 5.2.0019	Depositor
R, R_{free}	0.182 , 0.229 0.246 , 0.282	Depositor DCC
R_{free} test set	2857 reflections (5.34%)	DCC
Wilson B-factor (Å ²)	22.2	Xtriage
Anisotropy	0.324	Xtriage
Bulk solvent k_{sol} (e/Å ³), B_{sol} (Å ²)	0.42 , 67.7	EDS
Estimated twinning fraction	No twinning to report.	Xtriage
L-test for twinning ²	$\langle L \rangle = 0.49$, $\langle L^2 \rangle = 0.32$	Xtriage
Outliers	0 of 56338 reflections	Xtriage
F_o, F_c correlation	0.93	EDS
Total number of atoms	4690	wwPDB-VP
Average B, all atoms (Å ²)	40.0	wwPDB-VP

Xtriage's analysis on translational NCS is as follows: *The largest off-origin peak in the Patterson function is 8.00% of the height of the origin peak. No significant pseudotranslation is detected.*

¹Intensities estimated from amplitudes.

²Theoretical values of $\langle |L| \rangle$, $\langle L^2 \rangle$ for acentric reflections are 0.5, 0.375 respectively for untwinned datasets, and 0.333, 0.2 for perfectly twinned datasets.

5 Model quality [i](#)

5.1 Standard geometry [i](#)

Bond lengths and bond angles in the following residue types are not validated in this section: G2R, G1R

The Z score for a bond length (or angle) is the number of standard deviations the observed value is removed from the expected value. A bond length (or angle) with $|Z| > 5$ is considered an outlier worth inspection. RMSZ is the root-mean-square of all Z scores of the bond lengths (or angles).

Mol	Chain	Bond lengths		Bond angles	
		RMSZ	$\# Z > 5$	RMSZ	$\# Z > 5$
1	A	0.70	0/2101	0.78	2/2846 (0.1%)
1	B	0.70	0/2101	0.74	1/2846 (0.0%)
All	All	0.70	0/4202	0.76	3/5692 (0.1%)

There are no bond length outliers.

All (3) bond angle outliers are listed below:

Mol	Chain	Res	Type	Atoms	Z	Observed(°)	Ideal(°)
1	A	140	ARG	NE-CZ-NH2	-5.12	117.74	120.30
1	B	164	ASP	N-CA-CB	-5.09	101.44	110.60
1	A	295	SER	O-C-N	-5.01	114.69	122.70

There are no chirality outliers.

There are no planarity outliers.

5.2 Too-close contacts [i](#)

In the following table, the Non-H and H(model) columns list the number of non-hydrogen atoms and hydrogen atoms in the chain respectively. The H(added) column lists the number of hydrogen atoms added and optimized by MolProbity. The Clashes column lists the number of clashes within the asymmetric unit, whereas Symm-Clashes lists symmetry related clashes.

Mol	Chain	Non-H	H(model)	H(added)	Clashes	Symm-Clashes
1	A	2050	0	1975	40	0
1	B	2050	0	1976	46	0
2	A	73	0	39	13	0
2	B	37	0	21	11	0
3	B	36	0	21	6	0
4	A	235	0	0	7	0

Continued on next page...

Continued from previous page...

Mol	Chain	Non-H	H(model)	H(added)	Clashes	Symm-Clashes
4	B	209	0	0	4	0
All	All	4690	0	4032	103	0

The all-atom clashscore is defined as the number of clashes found per 1000 atoms (including hydrogen atoms). The all-atom clashscore for this structure is 13.

All (103) close contacts within the same asymmetric unit are listed below, sorted by their clash magnitude.

Atom-1	Atom-2	Interatomic distance (Å)	Clash overlap (Å)
2:B:301:G1R:O6	3:B:302:G2R:H1X1	1.33	1.23
2:A:302:G1R:H5'1	2:A:302:G1R:C8	1.76	1.16
2:A:302:G1R:H5'1	2:A:302:G1R:H8	1.28	1.14
1:A:165:THR:HG23	1:A:167:LYS:H	1.24	1.02
2:A:302:G1R:C5'	2:A:302:G1R:H8	1.91	0.99
1:B:103:GLU:CD	1:B:194:ARG:HH22	1.71	0.93
1:B:219:ASP:O	3:B:302:G2R:H8	1.67	0.93
1:B:232:PRO:HD3	1:B:269:ARG:HH12	1.35	0.89
1:B:165:THR:HG23	1:B:167:LYS:H	1.37	0.89
2:B:301:G1R:O6	3:B:302:G2R:C1X	2.22	0.88
1:B:115:GLN:HE22	1:B:149:LEU:H	1.20	0.87
1:A:115:GLN:HE22	1:A:149:LEU:H	1.24	0.85
2:A:301:G1R:H8	2:A:302:G1R:O4'	1.82	0.80
1:A:231:GLN:HG3	4:A:535:HOH:O	1.82	0.78
1:B:221:THR:O	1:B:225:VAL:HG12	1.84	0.77
1:B:227:VAL:HG23	1:B:266:ILE:HD11	1.72	0.71
2:A:302:G1R:C8	2:A:302:G1R:C5'	2.59	0.70
1:B:230:LEU:O	1:B:269:ARG:NH1	2.24	0.69
2:A:302:G1R:O3'	2:A:302:G1R:O2A	2.10	0.69
1:A:195:ARG:HD3	4:A:447:HOH:O	1.93	0.68
1:A:90:LYS:HG2	1:A:94:ILE:HG13	1.79	0.64
2:B:301:G1R:HO3'	2:B:301:G1R:PA	2.21	0.64
1:A:162:GLU:HB2	1:A:165:THR:HG22	1.79	0.64
1:B:177:ARG:HH11	1:B:177:ARG:HB3	1.64	0.63
1:A:183:ASN:ND2	1:A:186:SER:H	1.97	0.62
1:A:162:GLU:HG2	4:A:486:HOH:O	1.98	0.62
1:B:202:ASP:HB3	4:B:373:HOH:O	2.00	0.62
1:B:232:PRO:HD3	1:B:269:ARG:NH1	2.13	0.62
2:B:301:G1R:O3'	2:B:301:G1R:PA	2.58	0.61
1:A:294:SER:O	1:A:296:CYS:N	2.34	0.60
1:B:127:ARG:NH2	3:B:302:G2R:H4'	2.15	0.60
1:B:183:ASN:ND2	1:B:186:SER:H	1.99	0.60

Continued on next page...

Continued from previous page...

Atom-1	Atom-2	Interatomic distance (Å)	Clash overlap (Å)
1:A:140:ARG:NH2	4:A:417:HOH:O	2.31	0.60
1:B:103:GLU:CD	1:B:194:ARG:NH2	2.52	0.60
1:B:177:ARG:HB3	1:B:177:ARG:NH1	2.17	0.59
1:B:45:ARG:HG3	4:B:453:HOH:O	2.03	0.58
1:B:212:ARG:HH22	2:B:301:G1R:H5X1	1.69	0.57
1:A:48:GLN:NE2	1:A:171:GLN:HB3	2.19	0.57
1:B:127:ARG:HH21	2:B:301:G1R:PA	2.26	0.57
1:B:115:GLN:NE2	1:B:149:LEU:H	1.95	0.56
1:B:221:THR:O	1:B:225:VAL:CG1	2.52	0.56
1:A:104:GLU:OE1	1:B:177:ARG:NH2	2.38	0.56
1:A:268:LYS:NZ	1:B:95:SER:O	2.25	0.56
1:A:75:PRO:HA	1:A:78:ARG:HG3	1.87	0.56
1:B:103:GLU:OE1	1:B:194:ARG:NH2	2.40	0.55
1:B:127:ARG:NH2	2:B:301:G1R:O3A	2.35	0.55
1:A:180:CYS:HB2	4:A:470:HOH:O	2.06	0.54
1:A:104:GLU:HA	1:A:107:GLN:HG2	1.90	0.54
1:A:244:HIS:HE1	1:A:277:ASN:OD1	1.90	0.54
1:B:118:PRO:HD2	1:B:143:PHE:CE2	2.42	0.54
1:B:73:ILE:O	1:B:75:PRO:HD3	2.08	0.53
2:B:301:G1R:O1A	3:B:302:G2R:H4'	2.09	0.53
1:B:269:ARG:HH11	1:B:269:ARG:HB3	1.74	0.53
1:A:183:ASN:HD21	1:A:186:SER:H	1.56	0.52
1:A:251:ARG:H	1:A:251:ARG:HD3	1.75	0.52
2:A:301:G1R:H8	2:A:302:G1R:C1'	2.40	0.52
1:A:224:SER:OG	2:A:302:G1R:H3X	2.09	0.52
1:A:244:HIS:CD2	1:A:250:SER:HB3	2.45	0.51
1:B:220:SER:HB2	3:B:302:G2R:O2B	2.11	0.51
2:B:301:G1R:O3'	2:B:301:G1R:O5'	2.29	0.51
2:A:301:G1R:C8	2:A:302:G1R:H3'	2.41	0.50
1:B:244:HIS:CE1	1:B:253:LEU:HD12	2.46	0.50
1:A:110:MET:HE1	1:A:150:LEU:HD13	1.95	0.49
1:A:283:LYS:NZ	1:A:295:SER:O	2.44	0.49
1:B:212:ARG:C	1:B:214:LYS:H	2.15	0.48
1:B:47:ARG:HD2	4:B:424:HOH:O	2.13	0.48
1:A:231:GLN:HB2	1:A:234:LYS:HD3	1.95	0.47
1:B:227:VAL:CG2	1:B:266:ILE:HD11	2.44	0.47
1:A:244:HIS:HD2	1:A:250:SER:HB3	1.79	0.46
1:A:98:PRO:O	1:A:183:ASN:HA	2.16	0.46
1:A:47:ARG:O	1:A:47:ARG:HG3	2.16	0.46
1:A:227:VAL:HG13	1:A:228:HIS:CD2	2.51	0.46
1:A:59:PHE:HB3	1:A:60:PRO:HD3	1.98	0.46

Continued on next page...

Continued from previous page...

Atom-1	Atom-2	Interatomic distance (Å)	Clash overlap (Å)
1:A:293:ASP:HB2	4:A:532:HOH:O	2.15	0.46
2:A:301:G1R:C1X	2:A:302:G1R:C6	2.75	0.45
1:B:90:LYS:HG3	1:B:94:ILE:HG13	1.97	0.45
1:A:86:TRP:NE1	1:A:90:LYS:HE2	2.30	0.45
1:A:110:MET:HE1	1:A:192:VAL:HG12	1.98	0.45
1:A:115:GLN:NE2	1:A:149:LEU:H	2.03	0.44
1:B:225:VAL:HG13	1:B:226:GLU:HG3	1.99	0.44
1:B:246:GLY:O	1:B:248:GLU:N	2.51	0.44
1:B:180:CYS:HB2	4:B:310:HOH:O	2.17	0.44
1:A:284:PHE:O	1:A:288:VAL:HG23	2.18	0.44
1:B:225:VAL:HG13	1:B:226:GLU:N	2.32	0.44
1:A:200:ALA:O	1:A:234:LYS:HE2	2.17	0.43
1:A:251:ARG:H	1:A:251:ARG:CD	2.30	0.43
1:A:165:THR:HG23	1:A:167:LYS:N	2.08	0.43
2:A:302:G1R:C4'	2:A:302:G1R:H8	2.47	0.43
1:B:284:PHE:O	1:B:288:VAL:HG23	2.18	0.43
1:B:130:ASP:O	1:B:134:GLN:HG3	2.19	0.43
1:A:137:GLN:NE2	4:A:498:HOH:O	2.52	0.43
1:B:110:MET:SD	1:B:192:VAL:HG12	2.59	0.43
2:A:302:G1R:H5'1	2:A:302:G1R:N9	2.23	0.42
1:B:246:GLY:C	1:B:248:GLU:H	2.24	0.41
1:A:261:GLU:HG3	1:B:163:PHE:HZ	1.84	0.41
1:A:127:ARG:HD2	1:A:127:ARG:N	2.34	0.41
2:B:301:G1R:O3'	2:B:301:G1R:O1A	2.39	0.41
1:B:139:GLN:HG2	1:B:142:MET:HG3	2.02	0.41
1:B:162:GLU:HB2	1:B:165:THR:HG22	2.03	0.41
1:B:221:THR:HG23	1:B:225:VAL:HG11	2.02	0.40
2:A:302:G1R:C4'	2:A:302:G1R:C8	2.99	0.40
2:B:301:G1R:H8	2:B:301:G1R:H2'	1.81	0.40
1:B:98:PRO:O	1:B:183:ASN:HA	2.21	0.40

There are no symmetry-related clashes.

5.3 Torsion angles ⓘ

5.3.1 Protein backbone ⓘ

In the following table, the Percentiles column shows the percent Ramachandran outliers of the chain as a percentile score with respect to all X-ray entries followed by that with respect to entries of similar resolution.

The Analysed column shows the number of residues for which the backbone conformation was analysed, and the total number of residues.

Mol	Chain	Analysed	Favoured	Allowed	Outliers	Percentiles	
1	A	250/262 (95%)	236 (94%)	11 (4%)	3 (1%)	16	3
1	B	250/262 (95%)	236 (94%)	11 (4%)	3 (1%)	16	3
All	All	500/524 (95%)	472 (94%)	22 (4%)	6 (1%)	16	3

All (6) Ramachandran outliers are listed below:

Mol	Chain	Res	Type
1	A	295	SER
1	A	248	GLU
1	A	292	GLU
1	B	248	GLU
1	B	247	ARG
1	B	128	ILE

5.3.2 Protein sidechains ⓘ

In the following table, the Percentiles column shows the percent sidechain outliers of the chain as a percentile score with respect to all X-ray entries followed by that with respect to entries of similar resolution.

The Analysed column shows the number of residues for which the sidechain conformation was analysed, and the total number of residues.

Mol	Chain	Analysed	Rotameric	Outliers	Percentiles	
1	A	233/241 (97%)	227 (97%)	6 (3%)	54	32
1	B	233/241 (97%)	226 (97%)	7 (3%)	48	26
All	All	466/482 (97%)	453 (97%)	13 (3%)	51	29

All (13) residues with a non-rotameric sidechain are listed below:

Mol	Chain	Res	Type
1	A	89	PHE
1	A	129	LYS
1	A	131	LEU
1	A	183	ASN
1	A	251	ARG
1	A	266	ILE
1	B	89	PHE

Continued on next page...

Continued from previous page...

Mol	Chain	Res	Type
1	B	127	ARG
1	B	131	LEU
1	B	140	ARG
1	B	164	ASP
1	B	183	ASN
1	B	282	ASP

Some sidechains can be flipped to improve hydrogen bonding and reduce clashes. All (11) such sidechains are listed below:

Mol	Chain	Res	Type
1	A	115	GLN
1	A	134	GLN
1	A	139	GLN
1	A	183	ASN
1	A	244	HIS
1	A	290	ASN
1	B	115	GLN
1	B	134	GLN
1	B	183	ASN
1	B	270	ASN
1	B	286	GLN

5.3.3 RNA [i](#)

There are no RNA molecules in this entry.

5.4 Non-standard residues in protein, DNA, RNA chains [i](#)

There are no non-standard protein/DNA/RNA residues in this entry.

5.5 Carbohydrates [i](#)

There are no carbohydrates in this entry.

5.6 Ligand geometry [i](#)

4 ligands are modelled in this entry.

In the following table, the Counts columns list the number of bonds (or angles) for which Mogul statistics could be retrieved, the number of bonds (or angles) that are observed in the model and the number of bonds (or angles) that are defined in the chemical component dictionary. The Link column lists molecule types, if any, to which the group is linked. The Z score for a bond length (or angle) is the number of standard deviations the observed value is removed from the expected value. A bond length (or angle) with $|Z| > 2$ is considered an outlier worth inspection. RMSZ is the root-mean-square of all Z scores of the bond lengths (or angles).

Mol	Type	Chain	Res	Link	Bond lengths			Bond angles		
					Counts	RMSZ	# $ Z > 2$	Counts	RMSZ	# $ Z > 2$
2	G1R	A	301	2	32,39,40	1.36	3 (9%)	42,60,62	2.37	10 (23%)
2	G1R	A	302	2	33,40,40	1.35	4 (12%)	42,62,62	2.91	11 (26%)
2	G1R	B	301	-	33,40,40	1.28	4 (12%)	42,62,62	1.82	8 (19%)
3	G2R	B	302	-	32,39,39	1.03	2 (6%)	42,60,60	1.85	6 (14%)

In the following table, the Chirals column lists the number of chiral outliers, the number of chiral centers analysed, the number of these observed in the model and the number defined in the chemical component dictionary. Similar counts are reported in the Torsion and Rings columns. '-' means no outliers of that kind were identified.

Mol	Type	Chain	Res	Link	Chirals	Torsions	Rings
2	G1R	A	301	2	3/3/9/10	0/18/51/54	0/4/4/4
2	G1R	A	302	2	-	0/18/54/54	0/4/4/4
2	G1R	B	301	-	-	0/18/54/54	0/4/4/4
3	G2R	B	302	-	-	0/18/51/51	0/4/4/4

All (13) bond length outliers are listed below:

Mol	Chain	Res	Type	Atoms	Z	Observed(Å)	Ideal(Å)
2	A	301	G1R	O4'-C1'	-3.16	1.37	1.41
2	B	301	G1R	C6-C5	-2.20	1.36	1.41
2	A	302	G1R	O1X-C1X	2.05	1.46	1.39
2	A	302	G1R	C1X-C2X	2.17	1.55	1.52
2	A	302	G1R	C5'-C4'	2.21	1.58	1.51
2	B	301	G1R	C2-N1	2.40	1.39	1.35
3	B	302	G2R	C2-N1	2.54	1.39	1.35
2	B	301	G1R	C1X-C2X	2.73	1.55	1.52
2	A	301	G1R	C2-N1	3.51	1.41	1.35
3	B	302	G2R	C6-N1	3.75	1.40	1.33
2	B	301	G1R	O4X-C1X	4.08	1.47	1.42
2	A	301	G1R	C6-N1	4.54	1.41	1.33
2	A	302	G1R	O4'-C1'	4.72	1.47	1.41

All (35) bond angle outliers are listed below:

Mol	Chain	Res	Type	Atoms	Z	Observed(°)	Ideal(°)
2	A	302	G1R	O4'-C1'-N9	-7.17	93.09	108.10
3	B	302	G2R	C4'-O4'-C1'	-7.00	102.03	109.72
2	A	302	G1R	C4'-O4'-C1'	-5.30	103.90	109.72
2	A	302	G1R	PB-O3A-PA	-5.02	118.64	132.73
3	B	302	G2R	N3-C2-N1	-4.83	120.08	127.44
2	A	301	G1R	PB-O3A-PA	-4.82	119.18	132.73
2	A	301	G1R	N3-C2-N1	-4.69	120.30	127.44
2	A	302	G1R	C5'-C4'-C3'	-4.64	96.81	115.21
2	B	301	G1R	C4'-O4'-C1'	-4.51	104.77	109.72
2	B	301	G1R	C2'-C1'-N9	-4.30	107.72	114.29
2	B	301	G1R	PB-O3A-PA	-4.06	121.33	132.73
2	A	302	G1R	C5-C6-N1	-4.06	118.04	123.59
2	B	301	G1R	C5-C6-N1	-3.99	118.14	123.59
2	B	301	G1R	N3-C2-N1	-3.89	121.52	127.44
3	B	302	G2R	PB-O3A-PA	-3.85	121.91	132.73
2	A	301	G1R	C5-C6-N1	-3.63	118.62	123.59
2	B	301	G1R	C1'-N9-C4	-3.51	121.65	126.94
2	A	301	G1R	C4'-O4'-C1'	-3.49	105.88	109.72
2	A	302	G1R	O4'-C4'-C3'	-3.45	98.20	105.15
2	A	301	G1R	O2X-C2X-C3X	-3.42	104.67	111.23
3	B	302	G2R	C5-C6-N1	-3.32	119.05	123.59
2	A	302	G1R	N3-C2-N1	-3.11	122.70	127.44
2	A	302	G1R	O2'-C2'-C3'	-2.82	102.64	111.83
2	A	301	G1R	O2X-C2X-C1X	-2.30	104.09	111.20
3	B	302	G2R	N2-C2-N3	2.06	121.75	117.80
2	A	301	G1R	C6-N1-C2	2.17	118.95	115.94
2	A	301	G1R	O1B-PB-O2B	2.34	125.19	112.53
3	B	302	G2R	C6-N1-C2	2.57	119.51	115.94
2	B	301	G1R	N2-C2-N3	2.78	123.13	117.80
2	A	302	G1R	O4'-C4'-C5'	2.80	119.33	109.32
2	A	302	G1R	C6-N1-C2	3.39	120.65	115.94
2	B	301	G1R	C6-N1-C2	3.78	121.18	115.94
2	A	301	G1R	C2'-C1'-N9	7.00	124.99	114.29
2	A	301	G1R	O4'-C1'-N9	7.66	124.12	108.10
2	A	302	G1R	C2'-C1'-N9	11.85	132.39	114.29

All (3) chirality outliers are listed below:

Mol	Chain	Res	Type	Atom
2	A	301	G1R	C1X
2	A	301	G1R	C1'
2	A	301	G1R	C3'

There are no torsion outliers.

There are no ring outliers.

4 monomers are involved in 27 short contacts:

Mol	Chain	Res	Type	Clashes	Symm-Clashes
2	A	301	G1R	4	0
2	A	302	G1R	13	0
2	B	301	G1R	11	0
3	B	302	G2R	6	0

5.7 Other polymers [i](#)

There are no such residues in this entry.







5.8 Polymer linkage issues [i](#)

There are no chain breaks in this entry.

6 Fit of model and data

6.1 Protein, DNA and RNA chains

In the following table, the column labelled ‘#RSRZ> 2’ contains the number (and percentage) of RSRZ outliers, followed by percent RSRZ outliers for the chain as percentile scores relative to all X-ray entries and entries of similar resolution. The OWAB column contains the minimum, median, 95th percentile and maximum values of the occupancy-weighted average B-factor per residue. The column labelled ‘Q< 0.9’ lists the number of (and percentage) of residues with an average occupancy less than 0.9.

Mol	Chain	Analysed	<RSRZ>	#RSRZ>2	OWAB(Å ²)	Q<0.9
1	A	252/262 (96%)	1.52	71 (28%)  	30, 37, 53, 62	0
1	B	252/262 (96%)	1.60	78 (30%)  	29, 38, 55, 63	0
All	All	504/524 (96%)	1.56	149 (29%)  	29, 37, 53, 63	0

All (149) RSRZ outliers are listed below:

Mol	Chain	Res	Type	RSRZ
1	A	293	ASP	9.5
1	B	296	CYS	8.0
1	B	246	GLY	7.9
1	B	248	GLU	7.5
1	A	247	ARG	7.3
1	B	249	ASP	7.3
1	B	294	SER	7.3
1	B	295	SER	7.1
1	A	292	GLU	6.8
1	A	124	LEU	6.6
1	B	291	PRO	6.6
1	A	248	GLU	6.5
1	B	189	TRP	6.4
1	A	249	ASP	6.3
1	A	246	GLY	6.0
1	B	287	CYS	5.9
1	A	222	PHE	5.8
1	A	212	ARG	5.8
1	A	294	SER	5.7
1	B	293	ASP	5.6
1	B	245	GLY	5.6
1	A	143	PHE	5.5
1	B	213	SER	5.3
1	A	47	ARG	5.3

Continued on next page...

Continued from previous page...

Mol	Chain	Res	Type	RSRZ
1	A	123	LEU	5.2
1	B	292	GLU	4.9
1	A	206	VAL	4.7
1	A	225	VAL	4.7
1	B	145	LEU	4.6
1	B	247	ARG	4.5
1	B	188	PHE	4.5
1	A	145	LEU	4.5
1	A	189	TRP	4.4
1	B	185	VAL	4.4
1	B	176	TRP	4.3
1	A	238	LEU	4.2
1	A	192	VAL	4.1
1	A	227	VAL	4.1
1	B	159	TRP	4.0
1	A	204	VAL	3.9
1	B	290	ASN	3.9
1	A	79	HIS	3.9
1	A	196	PHE	3.9
1	B	268	LYS	3.9
1	A	245	GLY	3.9
1	A	185	VAL	3.8
1	B	124	LEU	3.8
1	A	122	ILE	3.8
1	A	164	ASP	3.8
1	A	125	TRP	3.8
1	B	212	ARG	3.7
1	A	150	LEU	3.7
1	B	211	SER	3.6
1	A	213	SER	3.5
1	B	282	ASP	3.5
1	B	150	LEU	3.4
1	A	193	SER	3.4
1	B	219	ASP	3.4
1	A	230	LEU	3.4
1	B	184	PRO	3.4
1	A	188	PHE	3.3
1	B	254	CYS	3.2
1	B	153	LEU	3.2
1	B	250	SER	3.1
1	A	45	ARG	3.1
1	B	196	PHE	3.1

Continued on next page...

Continued from previous page...

Mol	Chain	Res	Type	RSRZ
1	B	160	CYS	3.1
1	B	264	SER	3.1
1	A	144	THR	3.0
1	B	141	ASP	3.0
1	A	65	ALA	3.0
1	B	154	ALA	3.0
1	A	187	VAL	3.0
1	A	208	LEU	3.0
1	B	99	CYS	3.0
1	A	266	ILE	2.9
1	A	84	SER	2.9
1	A	154	ALA	2.9
1	B	280	ARG	2.9
1	B	257	PRO	2.9
1	B	144	THR	2.9
1	A	111	LYS	2.9
1	B	125	TRP	2.8
1	A	296	CYS	2.8
1	B	123	LEU	2.8
1	A	280	ARG	2.8
1	A	262	LEU	2.8
1	B	157	LEU	2.8
1	A	223	GLY	2.7
1	B	233	GLU	2.7
1	B	116	THR	2.7
1	B	138	VAL	2.7
1	B	286	GLN	2.7
1	B	192	VAL	2.7
1	A	271	ILE	2.7
1	B	283	LYS	2.7
1	B	127	ARG	2.7
1	A	176	TRP	2.6
1	A	241	TRP	2.6
1	A	290	ASN	2.6
1	B	187	VAL	2.6
1	A	221	THR	2.6
1	B	272	GLN	2.6
1	A	46	TRP	2.6
1	A	235	VAL	2.6
1	B	151	GLY	2.6
1	B	236	GLN	2.6
1	A	203	VAL	2.5

Continued on next page...

Continued from previous page...

Mol	Chain	Res	Type	RSRZ
1	B	261	GLU	2.5
1	B	231	GLN	2.5
1	A	80	VAL	2.5
1	B	214	LYS	2.5
1	A	78	ARG	2.5
1	A	107	GLN	2.5
1	B	260	LYS	2.5
1	B	270	ASN	2.4
1	B	89	PHE	2.4
1	A	205	HIS	2.4
1	A	159	TRP	2.4
1	B	228	HIS	2.3
1	A	153	LEU	2.3
1	B	149	LEU	2.3
1	B	101	ILE	2.3
1	A	224	SER	2.3
1	A	197	ALA	2.3
1	B	93	PHE	2.3
1	B	216	PHE	2.3
1	B	174	PRO	2.3
1	A	240	ALA	2.3
1	B	164	ASP	2.3
1	B	197	ALA	2.2
1	A	207	MET	2.2
1	B	259	ILE	2.2
1	A	200	ALA	2.2
1	A	148	THR	2.2
1	B	98	PRO	2.2
1	A	151	GLY	2.2
1	A	195	ARG	2.2
1	B	180	CYS	2.1
1	B	63	VAL	2.1
1	A	48	GLN	2.1
1	B	285	LEU	2.1
1	B	252	ASP	2.1
1	B	59	PHE	2.1
1	B	222	PHE	2.1
1	B	284	PHE	2.0
1	A	157	LEU	2.0
1	B	143	PHE	2.0
1	A	191	THR	2.0

6.2 Non-standard residues in protein, DNA, RNA chains [i](#)

There are no non-standard protein/DNA/RNA residues in this entry.

6.3 Carbohydrates [i](#)

There are no carbohydrates in this entry.

6.4 Ligands [i](#)

In the following table, the Atoms column lists the number of modelled atoms in the group and the number defined in the chemical component dictionary. LLDF column lists the quality of electron density of the group with respect to its neighbouring residues in protein, DNA or RNA chains. The B-factors column lists the minimum, median, 95th percentile and maximum values of B factors of atoms in the group. The column labelled 'Q< 0.9' lists the number of atoms with occupancy less than 0.9.

Mol	Type	Chain	Res	Atoms	RSCC	RSR	LLDF	B-factors(\AA^2)	Q<0.9
3	G2R	B	302	36/36	0.73	0.32	2.27	43,79,86,86	0
2	G1R	A	301	36/37	0.82	0.32	1.79	25,62,81,82	0
2	G1R	B	301	37/37	0.58	0.28	1.00	30,49,84,85	0
2	G1R	A	302	37/37	0.79	0.22	0.60	29,53,77,77	0

6.5 Other polymers [i](#)

There are no such residues in this entry.