



wwPDB X-ray Structure Validation Summary Report ⓘ

Feb 19, 2016 – 06:32 PM GMT

PDB ID : 3I68
Title : Plasmodium falciparum dihydroorotate dehydrogenase bound with triazolopyrimidine-based inhibitor DSM2
Authors : Deng, X.; Phillips, M.A.
Deposited on : 2009-07-06
Resolution : 2.40 Å (reported)

This is a wwPDB X-ray Structure Validation Summary Report for a publicly released PDB entry.
We welcome your comments at validation@mail.wwpdb.org
A user guide is available at
<http://wwpdb.org/validation/2016/XrayValidationReportHelp>
with specific help available everywhere you see the ⓘ symbol.

The following versions of software and data (see [references ⓘ](#)) were used in the production of this report:

MolProbity : 4.02b-467
Mogul : 1.7.1 (RC1), CSD as537be (2016)
Xtriage (Phenix) : 1.9-1692
EDS : rb-20026982
Percentile statistics : 20151230.v01 (using entries in the PDB archive December 30th 2015)
Refmac : 5.8.0135
CCP4 : 6.5.0
Ideal geometry (proteins) : Engh & Huber (2001)
Ideal geometry (DNA, RNA) : Parkinson et al. (1996)
Validation Pipeline (wwPDB-VP) : rb-20026982

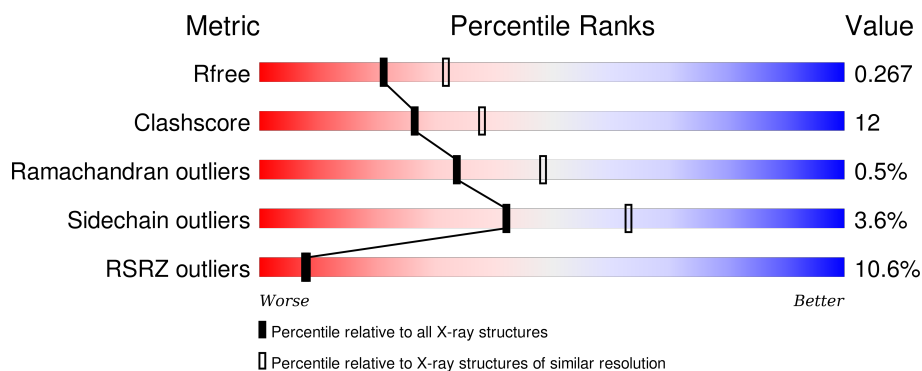
1 Overall quality at a glance

The following experimental techniques were used to determine the structure:

X-RAY DIFFRACTION

The reported resolution of this entry is 2.40 Å.

Percentile scores (ranging between 0-100) for global validation metrics of the entry are shown in the following graphic. The table shows the number of entries on which the scores are based.



Metric	Whole archive (#Entries)	Similar resolution (#Entries, resolution range(Å))
R_{free}	91344	2919 (2.40-2.40)
Clashscore	102246	3407 (2.40-2.40)
Ramachandran outliers	100387	3351 (2.40-2.40)
Sidechain outliers	100360	3352 (2.40-2.40)
RSRZ outliers	91569	2928 (2.40-2.40)

The table below summarises the geometric issues observed across the polymeric chains and their fit to the electron density. The red, orange, yellow and green segments on the lower bar indicate the fraction of residues that contain outliers for ≥ 3 , 2, 1 and 0 types of geometric quality criteria. A grey segment represents the fraction of residues that are not modelled. The numeric value for each fraction is indicated below the corresponding segment, with a dot representing fractions $\leq 5\%$. The upper red bar (where present) indicates the fraction of residues that have poor fit to the electron density. The numeric value is given above the bar.

Mol	Chain	Length	Quality of chain
1	A	415	

2 Entry composition

There are 5 unique types of molecules in this entry. The entry contains 3129 atoms, of which 0 are hydrogens and 0 are deuteriums.

In the tables below, the ZeroOcc column contains the number of atoms modelled with zero occupancy, the AltConf column contains the number of residues with at least one atom in alternate conformation and the Trace column contains the number of residues modelled with at most 2 atoms.

- Molecule 1 is a protein called Dihydroorotate dehydrogenase homolog, mitochondrial.

Mol	Chain	Residues	Atoms					ZeroOcc	AltConf	Trace
			Total	C	N	O	S			
1	A	378	2999	1916	502	566	15	0	0	0

There are 63 discrepancies between the modelled and reference sequences:

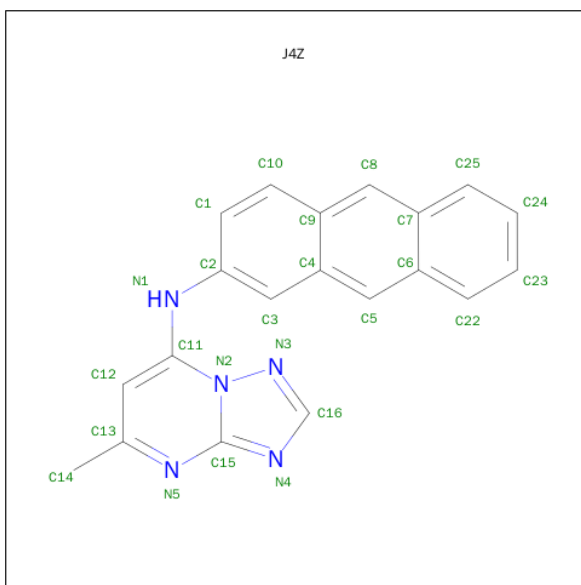
Chain	Residue	Modelled	Actual	Comment	Reference
A	125	MET	-	EXPRESSION TAG	UNP Q08210
A	126	GLY	-	EXPRESSION TAG	UNP Q08210
A	127	SER	-	EXPRESSION TAG	UNP Q08210
A	128	SER	-	EXPRESSION TAG	UNP Q08210
A	129	HIS	-	EXPRESSION TAG	UNP Q08210
A	130	HIS	-	EXPRESSION TAG	UNP Q08210
A	131	HIS	-	EXPRESSION TAG	UNP Q08210
A	132	HIS	-	EXPRESSION TAG	UNP Q08210
A	133	HIS	-	EXPRESSION TAG	UNP Q08210
A	134	HIS	-	EXPRESSION TAG	UNP Q08210
A	135	SER	-	EXPRESSION TAG	UNP Q08210
A	136	SER	-	EXPRESSION TAG	UNP Q08210
A	137	GLY	-	EXPRESSION TAG	UNP Q08210
A	138	LEU	-	EXPRESSION TAG	UNP Q08210
A	139	VAL	-	EXPRESSION TAG	UNP Q08210
A	140	PRO	-	EXPRESSION TAG	UNP Q08210
A	141	ARG	-	EXPRESSION TAG	UNP Q08210
A	142	GLY	-	EXPRESSION TAG	UNP Q08210
A	143	SER	-	EXPRESSION TAG	UNP Q08210
A	144	HIS	-	EXPRESSION TAG	UNP Q08210
A	145	MET	-	EXPRESSION TAG	UNP Q08210
A	146	ALA	-	EXPRESSION TAG	UNP Q08210
A	147	SER	-	EXPRESSION TAG	UNP Q08210
A	148	MET	-	EXPRESSION TAG	UNP Q08210
A	149	THR	-	EXPRESSION TAG	UNP Q08210
A	150	GLY	-	EXPRESSION TAG	UNP Q08210
A	151	GLY	-	EXPRESSION TAG	UNP Q08210

Continued on next page...

Continued from previous page...

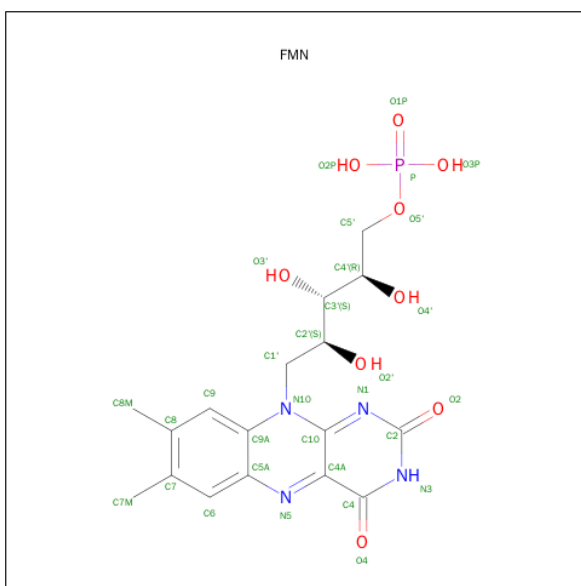
Chain	Residue	Modelled	Actual	Comment	Reference
A	152	GLN	-	EXPRESSION TAG	UNP Q08210
A	153	GLN	-	EXPRESSION TAG	UNP Q08210
A	154	GLY	-	EXPRESSION TAG	UNP Q08210
A	155	ARG	-	EXPRESSION TAG	UNP Q08210
A	156	ASP	-	EXPRESSION TAG	UNP Q08210
A	157	PRO	-	EXPRESSION TAG	UNP Q08210
A	?	-	SER	DELETION	UNP Q08210
A	?	-	THR	DELETION	UNP Q08210
A	?	-	TYR	DELETION	UNP Q08210
A	?	-	ASN	DELETION	UNP Q08210
A	?	-	GLU	DELETION	UNP Q08210
A	?	-	ASP	DELETION	UNP Q08210
A	?	-	ASN	DELETION	UNP Q08210
A	?	-	LYS	DELETION	UNP Q08210
A	?	-	ILE	DELETION	UNP Q08210
A	?	-	VAL	DELETION	UNP Q08210
A	?	-	GLU	DELETION	UNP Q08210
A	?	-	LYS	DELETION	UNP Q08210
A	?	-	LYS	DELETION	UNP Q08210
A	?	-	ASN	DELETION	UNP Q08210
A	?	-	ASN	DELETION	UNP Q08210
A	?	-	PHE	DELETION	UNP Q08210
A	?	-	ASN	DELETION	UNP Q08210
A	?	-	LYS	DELETION	UNP Q08210
A	?	-	ASN	DELETION	UNP Q08210
A	?	-	ASN	DELETION	UNP Q08210
A	?	-	SER	DELETION	UNP Q08210
A	?	-	HIS	DELETION	UNP Q08210
A	?	-	MET	DELETION	UNP Q08210
A	?	-	MET	DELETION	UNP Q08210
A	?	-	LYS	DELETION	UNP Q08210
A	?	-	ASP	DELETION	UNP Q08210
A	?	-	ALA	DELETION	UNP Q08210
A	?	-	LYS	DELETION	UNP Q08210
A	?	-	ASP	DELETION	UNP Q08210
A	?	-	ASN	DELETION	UNP Q08210

- Molecule 2 is N-ANTHRACEN-2-YL-5-METHYL[1,2,4]TRIAZOLO[1,5-A]PYRIMIDIN-7-AMINE (three-letter code: J4Z) (formula: C₂₀H₁₅N₅).



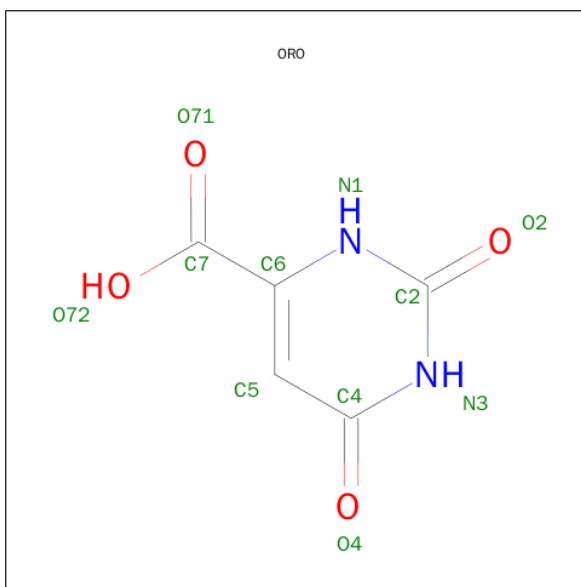
Mol	Chain	Residues	Atoms			ZeroOcc	AltConf
2	A	1	Total	C	N	0	0
			25	20	5		

- Molecule 3 is FLAVIN MONONUCLEOTIDE (three-letter code: FMN) (formula: $C_{17}H_{21}N_4O_9P$).



Mol	Chain	Residues	Atoms					ZeroOcc	AltConf
3	A	1	Total	C	N	O	P	0	0
			31	17	4	9	1		

- Molecule 4 is OROTIC ACID (three-letter code: ORO) (formula: $C_5H_4N_2O_4$).



Mol	Chain	Residues	Atoms				ZeroOcc	AltConf
4	A	1	Total	C	N	O	0	0
			11	5	2	4		

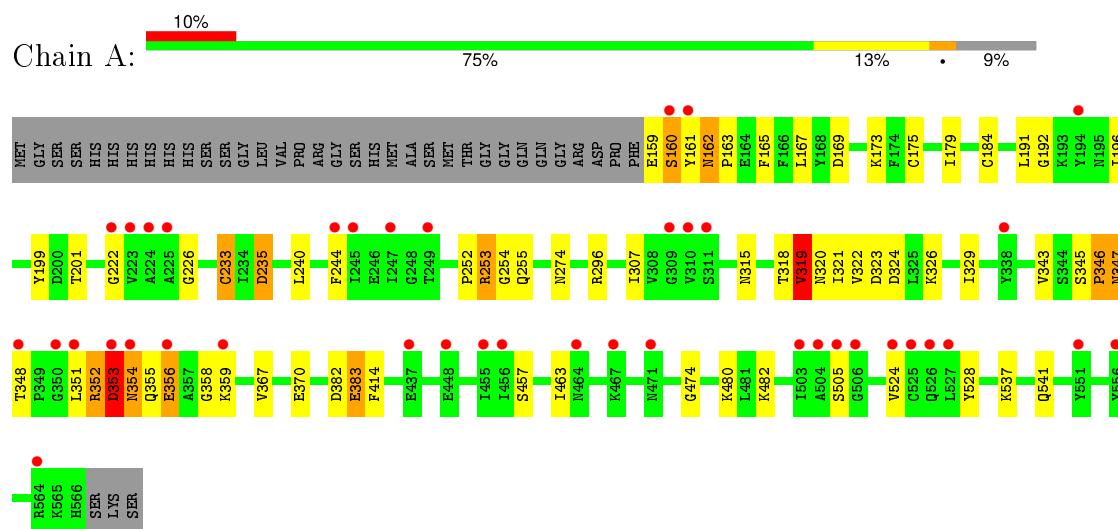
- Molecule 5 is water.

Mol	Chain	Residues	Atoms		ZeroOcc	AltConf
5	A	63	Total	O	0	0
			63	63		

3 Residue-property plots [i](#)

These plots are drawn for all protein, RNA and DNA chains in the entry. The first graphic for a chain summarises the proportions of errors displayed in the second graphic. The second graphic shows the sequence view annotated by issues in geometry and electron density. Residues are color-coded according to the number of geometric quality criteria for which they contain at least one outlier: green = 0, yellow = 1, orange = 2 and red = 3 or more. A red dot above a residue indicates a poor fit to the electron density ($RSRZ > 2$). Stretches of 2 or more consecutive residues without any outlier are shown as a green connector. Residues present in the sample, but not in the model, are shown in grey.

- Molecule 1: Dihydroorotate dehydrogenase homolog, mitochondrial



4 Data and refinement statistics

Property	Value	Source
Space group	P 64	Depositor
Cell constants a, b, c, α , β , γ	85.92Å 85.92Å 138.70Å 90.00° 90.00° 120.00°	Depositor
Resolution (Å)	50.00 – 2.40 39.27 – 2.20	Depositor EDS
% Data completeness (in resolution range)	99.5 (50.00-2.40) 99.5 (39.27-2.20)	Depositor EDS
R_{merge}	0.05	Depositor
R_{sym}	(Not available)	Depositor
$\langle I/\sigma(I) \rangle$ ¹	2.50 (at 2.20Å)	Xtriage
Refinement program	REFMAC 5.5.0072	Depositor
R, R_{free}	0.214 , 0.267 0.232 , 0.267	Depositor DCC
R_{free} test set	1128 reflections (5.24%)	DCC
Wilson B-factor (Å ²)	55.6	Xtriage
Anisotropy	0.368	Xtriage
Bulk solvent k_{sol} (e/Å ³), B_{sol} (Å ²)	0.39 , 65.3	EDS
Estimated twinning fraction	0.053 for h,-h-k,-l	Xtriage
L-test for twinning ²	$\langle L \rangle = 0.50$, $\langle L^2 \rangle = 0.34$	Xtriage
Outliers	0 of 29187 reflections	Xtriage
F_o, F_c correlation	0.95	EDS
Total number of atoms	3129	wwPDB-VP
Average B, all atoms (Å ²)	63.0	wwPDB-VP

Xtriage's analysis on translational NCS is as follows: *The largest off-origin peak in the Patterson function is 4.61% of the height of the origin peak. No significant pseudotranslation is detected.*

¹Intensities estimated from amplitudes.

²Theoretical values of $\langle |L| \rangle$, $\langle L^2 \rangle$ for acentric reflections are 0.5, 0.375 respectively for untwinned datasets, and 0.333, 0.2 for perfectly twinned datasets.

5 Model quality ⓘ

5.1 Standard geometry ⓘ

Bond lengths and bond angles in the following residue types are not validated in this section: FMN, ORO, J4Z

The Z score for a bond length (or angle) is the number of standard deviations the observed value is removed from the expected value. A bond length (or angle) with $|Z| > 5$ is considered an outlier worth inspection. RMSZ is the root-mean-square of all Z scores of the bond lengths (or angles).

Mol	Chain	Bond lengths		Bond angles	
		RMSZ	$\# Z > 5$	RMSZ	$\# Z > 5$
1	A	0.69	1/3050 (0.0%)	0.66	3/4107 (0.1%)

All (1) bond length outliers are listed below:

Mol	Chain	Res	Type	Atoms	Z	Observed(Å)	Ideal(Å)
1	A	233	CYS	CB-SG	-8.53	1.67	1.82

All (3) bond angle outliers are listed below:

Mol	Chain	Res	Type	Atoms	Z	Observed(°)	Ideal(°)
1	A	353	ASP	N-CA-C	-6.37	93.80	111.00
1	A	346	PRO	N-CA-C	-5.61	97.52	112.10
1	A	319	VAL	CB-CA-C	-5.33	101.28	111.40

There are no chirality outliers.

There are no planarity outliers.

5.2 Too-close contacts ⓘ

In the following table, the Non-H and H(model) columns list the number of non-hydrogen atoms and hydrogen atoms in the chain respectively. The H(added) column lists the number of hydrogen atoms added and optimized by MolProbity. The Clashes column lists the number of clashes within the asymmetric unit, whereas Symm-Clashes lists symmetry related clashes.

Mol	Chain	Non-H	H(model)	H(added)	Clashes	Symm-Clashes
1	A	2999	0	3037	75	0
2	A	25	0	15	1	0
3	A	31	0	19	1	0
4	A	11	0	3	2	0

Continued on next page...

Continued from previous page...

Mol	Chain	Non-H	H(model)	H(added)	Clashes	Symm-Clashes
5	A	63	0	0	2	0
All	All	3129	0	3074	75	0

The all-atom clashscore is defined as the number of clashes found per 1000 atoms (including hydrogen atoms). The all-atom clashscore for this structure is 12.

The worst 5 of 75 close contacts within the same asymmetric unit are listed below, sorted by their clash magnitude.

Atom-1	Atom-2	Interatomic distance (Å)	Clash overlap (Å)
1:A:352:ARG:HE	1:A:354:ASN:HA	0.99	1.11
1:A:351:LEU:HD12	1:A:352:ARG:N	1.66	1.09
1:A:352:ARG:HG2	1:A:353:ASP:O	1.53	1.08
1:A:319:VAL:HG22	1:A:320:ASN:N	1.68	1.06
1:A:253:ARG:HD3	1:A:254:GLY:H	1.18	1.06

There are no symmetry-related clashes.

5.3 Torsion angles [i](#)

5.3.1 Protein backbone [i](#)

In the following table, the Percentiles column shows the percent Ramachandran outliers of the chain as a percentile score with respect to all X-ray entries followed by that with respect to entries of similar resolution.

The Analysed column shows the number of residues for which the backbone conformation was analysed, and the total number of residues.

Mol	Chain	Analysed	Favoured	Allowed	Outliers	Percentiles
1	A	376/415 (91%)	361 (96%)	13 (4%)	2 (0%)	<div><div>34</div><div>48</div></div>

All (2) Ramachandran outliers are listed below:

Mol	Chain	Res	Type
1	A	160	SER
1	A	347	ASN

5.3.2 Protein sidechains [i](#)

In the following table, the Percentiles column shows the percent sidechain outliers of the chain as a percentile score with respect to all X-ray entries followed by that with respect to entries of similar resolution.

The Analysed column shows the number of residues for which the sidechain conformation was analysed, and the total number of residues.

Mol	Chain	Analysed	Rotameric	Outliers	Percentiles
1	A	335/365 (92%)	323 (96%)	12 (4%)	42 63

5 of 12 residues with a non-rotameric sidechain are listed below:

Mol	Chain	Res	Type
1	A	352	ARG
1	A	353	ASP
1	A	383	GLU
1	A	319	VAL
1	A	356	GLU

Some sidechains can be flipped to improve hydrogen bonding and reduce clashes. 5 of 7 such sidechains are listed below:

Mol	Chain	Res	Type
1	A	355	GLN
1	A	566	HIS
1	A	494	ASN
1	A	320	ASN
1	A	541	GLN

5.3.3 RNA [i](#)

There are no RNA molecules in this entry.

5.4 Non-standard residues in protein, DNA, RNA chains [i](#)

There are no non-standard protein/DNA/RNA residues in this entry.

5.5 Carbohydrates [i](#)

There are no carbohydrates in this entry.

5.6 Ligand geometry

3 ligands are modelled in this entry.

In the following table, the Counts columns list the number of bonds (or angles) for which Mogul statistics could be retrieved, the number of bonds (or angles) that are observed in the model and the number of bonds (or angles) that are defined in the chemical component dictionary. The Link column lists molecule types, if any, to which the group is linked. The Z score for a bond length (or angle) is the number of standard deviations the observed value is removed from the expected value. A bond length (or angle) with $|Z| > 2$ is considered an outlier worth inspection. RMSZ is the root-mean-square of all Z scores of the bond lengths (or angles).

Mol	Type	Chain	Res	Link	Bond lengths			Bond angles		
					Counts	RMSZ	$\# Z > 2$	Counts	RMSZ	$\# Z > 2$
2	J4Z	A	1001	-	23,29,29	1.50	4 (17%)	32,42,42	1.72	3 (9%)
3	FMN	A	1002	-	32,33,33	1.34	5 (15%)	34,50,50	2.24	7 (20%)
4	ORO	A	1003	-	6,11,11	1.06	0	6,15,15	3.94	5 (83%)

In the following table, the Chirals column lists the number of chiral outliers, the number of chiral centers analysed, the number of these observed in the model and the number defined in the chemical component dictionary. Similar counts are reported in the Torsion and Rings columns. '-' means no outliers of that kind were identified.

Mol	Type	Chain	Res	Link	Chirals	Torsions	Rings
2	J4Z	A	1001	-	-	0/4/4/4	0/5/5/5
3	FMN	A	1002	-	-	0/18/18/18	0/3/3/3
4	ORO	A	1003	-	-	0/0/4/4	0/1/1/1

The worst 5 of 9 bond length outliers are listed below:

Mol	Chain	Res	Type	Atoms	Z	Observed(Å)	Ideal(Å)
2	A	1001	J4Z	C10-C1	2.05	1.40	1.36
2	A	1001	J4Z	C16-N3	2.07	1.36	1.32
3	A	1002	FMN	C10-N1	2.38	1.39	1.35
3	A	1002	FMN	C5A-N5	2.70	1.39	1.35
3	A	1002	FMN	C1'-N10	2.72	1.51	1.48

The worst 5 of 15 bond angle outliers are listed below:

Mol	Chain	Res	Type	Atoms	Z	Observed(°)	Ideal(°)
3	A	1002	FMN	N3-C2-N1	-5.22	118.89	127.69
4	A	1003	ORO	C5-C4-N3	-4.47	119.29	124.02
4	A	1003	ORO	N3-C2-N1	-4.02	120.92	127.69
3	A	1002	FMN	C4A-C4-N3	-3.91	118.41	123.52

Continued on next page...

Continued from previous page...

Mol	Chain	Res	Type	Atoms	Z	Observed(°)	Ideal(°)
2	A	1001	J4Z	C12-C13-N5	-3.05	119.92	122.76

There are no chirality outliers.

There are no torsion outliers.

There are no ring outliers.

3 monomers are involved in 4 short contacts:

Mol	Chain	Res	Type	Clashes	Symm-Clashes
2	A	1001	J4Z	1	0
3	A	1002	FMN	1	0
4	A	1003	ORO	2	0

5.7 Other polymers [i](#)

There are no such residues in this entry.

5.8 Polymer linkage issues [i](#)

There are no chain breaks in this entry.

6 Fit of model and data [i](#)

6.1 Protein, DNA and RNA chains [i](#)

In the following table, the column labelled '#RSRZ > 2' contains the number (and percentage) of RSRZ outliers, followed by percent RSRZ outliers for the chain as percentile scores relative to all X-ray entries and entries of similar resolution. The OWAB column contains the minimum, median, 95th percentile and maximum values of the occupancy-weighted average B-factor per residue. The column labelled 'Q < 0.9' lists the number of (and percentage) of residues with an average occupancy less than 0.9.

Mol	Chain	Analysed	<RSRZ>	#RSRZ>2	OWAB(Å ²)	Q<0.9
1	A	378/415 (91%)	0.43	40 (10%) 8 8	42, 61, 83, 96	1 (0%)

The worst 5 of 40 RSRZ outliers are listed below:

Mol	Chain	Res	Type	RSRZ
1	A	161	TYR	6.2
1	A	353	ASP	5.7
1	A	350	GLY	5.5
1	A	160	SER	5.1
1	A	467	LYS	5.0

6.2 Non-standard residues in protein, DNA, RNA chains [i](#)

There are no non-standard protein/DNA/RNA residues in this entry.

6.3 Carbohydrates [i](#)

There are no carbohydrates in this entry.

6.4 Ligands [i](#)

In the following table, the Atoms column lists the number of modelled atoms in the group and the number defined in the chemical component dictionary. LLDF column lists the quality of electron density of the group with respect to its neighbouring residues in protein, DNA or RNA chains. The B-factors column lists the minimum, median, 95th percentile and maximum values of B factors of atoms in the group. The column labelled 'Q < 0.9' lists the number of atoms with occupancy less than 0.9.

Mol	Type	Chain	Res	Atoms	RSCC	RSR	LLDF	B-factors(Å ²)	Q<0.9
3	FMN	A	1002	31/31	0.96	0.27	0.40	42,48,51,52	0

Continued on next page...

Continued from previous page...

Mol	Type	Chain	Res	Atoms	RSCC	RSR	LLDF	B-factors(\AA^2)	Q<0.9
4	ORO	A	1003	11/11	0.96	0.16	0.14	53,54,55,55	0
2	J4Z	A	1001	25/25	0.96	0.13	-0.68	49,50,52,53	0

6.5 Other polymers [i](#)

There are no such residues in this entry.