



Full wwPDB X-ray Structure Validation Report ⓘ

Jan 16, 2017 – 10:55 PM EST

PDB ID : 5IEZ
Title : Discovery of Potent Myeloid Cell Leukemia-1 (Mcl-1) inhibitors using Structure-Based Design
Authors : Zhao, B.
Deposited on : 2016-02-25
Resolution : 2.60 Å(reported)

This is a Full wwPDB X-ray Structure Validation Report for a publicly released PDB entry.

We welcome your comments at validation@mail.wwpdb.org

A user guide is available at

<http://wwpdb.org/validation/2016/XrayValidationReportHelp>

with specific help available everywhere you see the ⓘ symbol.

The following versions of software and data (see [references ⓘ](#)) were used in the production of this report:

MolProbity	:	4.02b-467
Mogul	:	1.7.1 (RC1), CSD as537be (2016)
Xtriage (Phenix)	:	1.9-1692
EDS	:	rb-20028442
Percentile statistics	:	20151230.v01 (using entries in the PDB archive December 30th 2015)
Refmac	:	5.8.0135
CCP4	:	6.5.0
Ideal geometry (proteins)	:	Engh & Huber (2001)
Ideal geometry (DNA, RNA)	:	Parkinson et al. (1996)
Validation Pipeline (wwPDB-VP)	:	rb-20028442

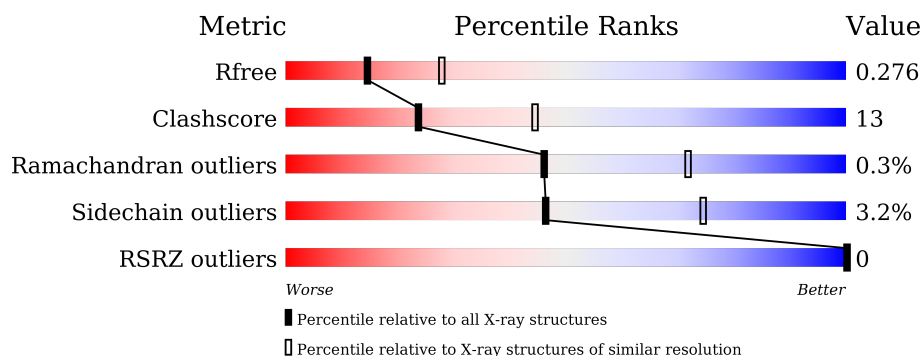
1 Overall quality at a glance

The following experimental techniques were used to determine the structure:

X-RAY DIFFRACTION

The reported resolution of this entry is 2.60 Å.

Percentile scores (ranging between 0-100) for global validation metrics of the entry are shown in the following graphic. The table shows the number of entries on which the scores are based.



Metric	Whole archive (#Entries)	Similar resolution (#Entries, resolution range(Å))
R_{free}	91344	2328 (2.60-2.60)
Clashscore	102246	2679 (2.60-2.60)
Ramachandran outliers	100387	2635 (2.60-2.60)
Sidechain outliers	100360	2635 (2.60-2.60)
RSRZ outliers	91569	2334 (2.60-2.60)

The table below summarises the geometric issues observed across the polymeric chains and their fit to the electron density. The red, orange, yellow and green segments on the lower bar indicate the fraction of residues that contain outliers for ≥ 3 , 2, 1 and 0 types of geometric quality criteria. A grey segment represents the fraction of residues that are not modelled. The numeric value for each fraction is indicated below the corresponding segment, with a dot representing fractions $\leq 5\%$. The upper red bar (where present) indicates the fraction of residues that have poor fit to the electron density. The numeric value is given above the bar.

Mol	Chain	Length	Quality of chain
1	A	159	<div> <div>67%</div> <div>27%</div> <div>• 5%</div> </div>
1	B	159	<div> <div>65%</div> <div>27%</div> <div>• •</div> </div>
1	C	159	<div> <div>77%</div> <div>16%</div> <div>• •</div> </div>
1	D	159	<div> <div>60%</div> <div>28%</div> <div>• 8%</div> </div>

2 Entry composition

There are 3 unique types of molecules in this entry. The entry contains 5022 atoms, of which 0 are hydrogens and 0 are deuteriums.

In the tables below, the ZeroOcc column contains the number of atoms modelled with zero occupancy, the AltConf column contains the number of residues with at least one atom in alternate conformation and the Trace column contains the number of residues modelled with at most 2 atoms.

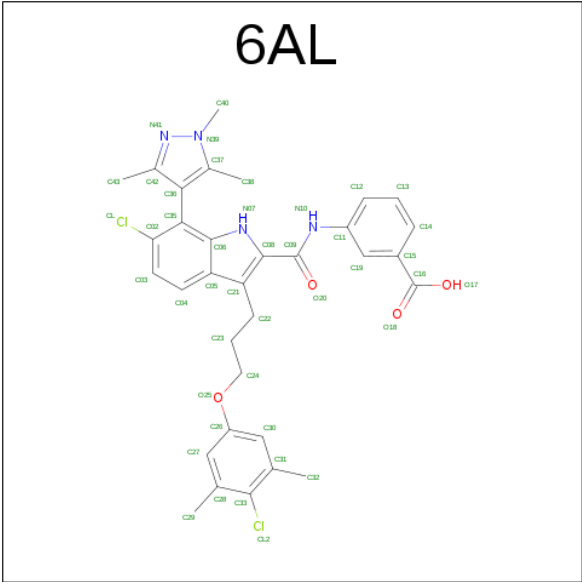
- Molecule 1 is a protein called Induced myeloid leukemia cell differentiation protein Mcl-1.

Mol	Chain	Residues	Atoms					ZeroOcc	AltConf	Trace
1	A	151	Total	C	N	O	S	0	1	0
			1201	754	220	223	4			
1	B	152	Total	C	N	O	S	0	1	0
			1205	756	217	228	4			
1	C	152	Total	C	N	O	S	0	1	0
			1207	756	219	228	4			
1	D	146	Total	C	N	O	S	0	1	0
			1143	720	204	216	3			

There are 12 discrepancies between the modelled and reference sequences:

Chain	Residue	Modelled	Actual	Comment	Reference
A	169	GLY	-	expression tag	UNP Q07820
A	170	ALA	-	expression tag	UNP Q07820
A	171	ASP	-	expression tag	UNP Q07820
B	169	GLY	-	expression tag	UNP Q07820
B	170	ALA	-	expression tag	UNP Q07820
B	171	ASP	-	expression tag	UNP Q07820
C	169	GLY	-	expression tag	UNP Q07820
C	170	ALA	-	expression tag	UNP Q07820
C	171	ASP	-	expression tag	UNP Q07820
D	169	GLY	-	expression tag	UNP Q07820
D	170	ALA	-	expression tag	UNP Q07820
D	171	ASP	-	expression tag	UNP Q07820

- Molecule 2 is 3-({6-chloro-3-[3-(4-chloro-3,5-dimethylphenoxy)propyl]-7-(1,3,5-trimethyl-1H-pyrazol-4-yl)-1H-indole-2-carbonyl}amino)benzoic acid (three-letter code: 6AL) (formula: C₃₃H₃₂Cl₂N₄O₄).



Mol	Chain	Residues	Atoms					ZeroOcc	AltConf
2	A	1	Total	C	Cl	N	O	0	0
			43	33	2	4	4		
2	B	1	Total	C	Cl	N	O	0	0
			43	33	2	4	4		
2	C	1	Total	C	Cl	N	O	0	0
			43	33	2	4	4		
2	D	1	Total	C	Cl	N	O	0	0
			43	33	2	4	4		

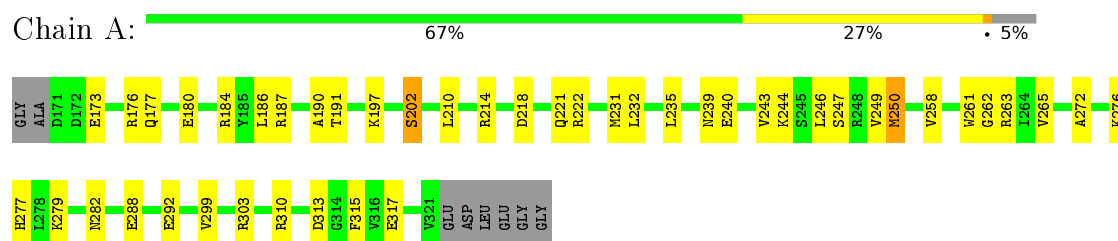
- Molecule 3 is water.

Mol	Chain	Residues	Atoms		ZeroOcc	AltConf
3	A	32	Total	O	0	0
			32	32		
3	B	28	Total	O	0	0
			28	28		
3	C	21	Total	O	0	0
			21	21		
3	D	13	Total	O	0	0
			13	13		

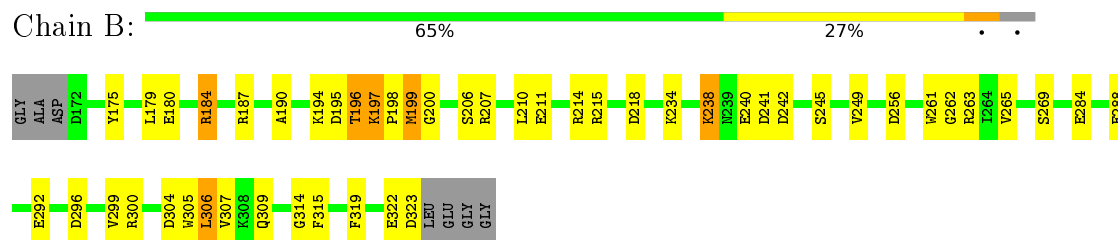
3 Residue-property plots

These plots are drawn for all protein, RNA and DNA chains in the entry. The first graphic for a chain summarises the proportions of errors displayed in the second graphic. The second graphic shows the sequence view annotated by issues in geometry and electron density. Residues are color-coded according to the number of geometric quality criteria for which they contain at least one outlier: green = 0, yellow = 1, orange = 2 and red = 3 or more. A red dot above a residue indicates a poor fit to the electron density ($RSRZ > 2$). Stretches of 2 or more consecutive residues without any outlier are shown as a green connector. Residues present in the sample, but not in the model, are shown in grey.

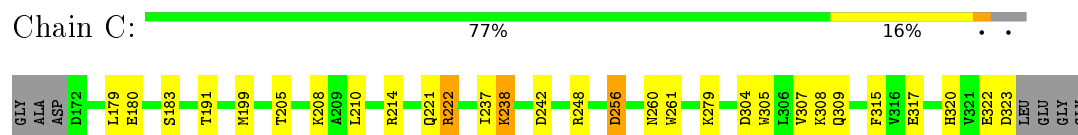
- Molecule 1: Induced myeloid leukemia cell differentiation protein Mcl-1



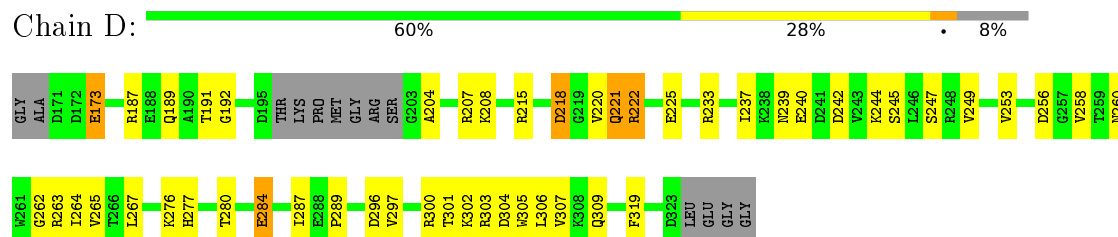
- Molecule 1: Induced myeloid leukemia cell differentiation protein Mcl-1



- Molecule 1: Induced myeloid leukemia cell differentiation protein Mcl-1



- Molecule 1: Induced myeloid leukemia cell differentiation protein Mcl-1



4 Data and refinement statistics

Property	Value	Source
Space group	P 1 21 1	Depositor
Cell constants a, b, c, α , β , γ	39.91Å 136.05Å 63.50Å 90.00° 101.62° 90.00°	Depositor
Resolution (Å)	29.84 – 2.60 36.64 – 2.39	Depositor EDS
% Data completeness (in resolution range)	90.8 (29.84-2.60) 87.5 (36.64-2.39)	Depositor EDS
R_{merge}	0.05	Depositor
R_{sym}	0.11	Depositor
$\langle I/\sigma(I) \rangle$ ¹	3.50 (at 2.39Å)	Xtriage
Refinement program	PHENIX (1.10 _2155: ???)	Depositor
R, R_{free}	0.194 , 0.277 0.194 , 0.276	Depositor DCC
R_{free} test set	904 reflections (4.88%)	DCC
Wilson B-factor (Å ²)	28.5	Xtriage
Anisotropy	1.040	Xtriage
Bulk solvent k_{sol} (e/Å ³), B_{sol} (Å ²)	0.31 , 45.9	EDS
L-test for twinning ²	$\langle L \rangle = 0.43$, $\langle L^2 \rangle = 0.26$	Xtriage
Estimated twinning fraction	No twinning to report.	Xtriage
F_o, F_c correlation	0.92	EDS
Total number of atoms	5022	wwPDB-VP
Average B, all atoms (Å ²)	41.0	wwPDB-VP

Xtriage's analysis on translational NCS is as follows: *The largest off-origin peak in the Patterson function is 5.52% of the height of the origin peak. No significant pseudotranslation is detected.*

¹Intensities estimated from amplitudes.

²Theoretical values of $\langle |L| \rangle$, $\langle L^2 \rangle$ for acentric reflections are 0.5, 0.333 respectively for untwinned datasets, and 0.375, 0.2 for perfectly twinned datasets.

5 Model quality

5.1 Standard geometry

Bond lengths and bond angles in the following residue types are not validated in this section: 6AL

The Z score for a bond length (or angle) is the number of standard deviations the observed value is removed from the expected value. A bond length (or angle) with $|Z| > 5$ is considered an outlier worth inspection. RMSZ is the root-mean-square of all Z scores of the bond lengths (or angles).

Mol	Chain	Bond lengths		Bond angles	
		RMSZ	$\# Z > 5$	RMSZ	$\# Z > 5$
1	A	0.48	0/1221	0.70	1/1644 (0.1%)
1	B	0.46	0/1225	0.75	1/1652 (0.1%)
1	C	0.48	1/1227 (0.1%)	0.63	0/1655
1	D	0.44	0/1161	0.62	0/1567
All	All	0.47	1/4834 (0.0%)	0.68	2/6518 (0.0%)

Chiral center outliers are detected by calculating the chiral volume of a chiral center and verifying if the center is modelled as a planar moiety or with the opposite hand. A planarity outlier is detected by checking planarity of atoms in a peptide group, atoms in a mainchain group or atoms of a sidechain that are expected to be planar.

Mol	Chain	#Chirality outliers	#Planarity outliers
1	A	0	1
1	B	0	2
1	D	0	1
All	All	0	4

All (1) bond length outliers are listed below:

Mol	Chain	Res	Type	Atoms	Z	Observed(Å)	Ideal(Å)
1	C	238	LYS	CD-CE	-5.43	1.37	1.51

All (2) bond angle outliers are listed below:

Mol	Chain	Res	Type	Atoms	Z	Observed($^{\circ}$)	Ideal($^{\circ}$)
1	A	250	MET	CA-CB-CG	5.78	123.13	113.30
1	B	306	LEU	CA-CB-CG	5.25	127.38	115.30

There are no chirality outliers.

All (4) planarity outliers are listed below:

Mol	Chain	Res	Type	Group
1	A	244	LYS	Peptide
1	B	198	PRO	Peptide
1	B	199	MET	Peptide
1	D	222	ARG	Peptide

5.2 Too-close contacts

In the following table, the Non-H and H(model) columns list the number of non-hydrogen atoms and hydrogen atoms in the chain respectively. The H(added) column lists the number of hydrogen atoms added and optimized by MolProbity. The Clashes column lists the number of clashes within the asymmetric unit, whereas Symm-Clashes lists symmetry related clashes.

Mol	Chain	Non-H	H(model)	H(added)	Clashes	Symm-Clashes
1	A	1201	0	1193	35	0
1	B	1205	0	1186	38	0
1	C	1207	0	1186	21	0
1	D	1143	0	1106	36	0
2	A	43	0	0	1	0
2	B	43	0	0	0	0
2	C	43	0	0	0	0
2	D	43	0	0	2	0
3	A	32	0	0	2	0
3	B	28	0	0	3	0
3	C	21	0	0	2	0
3	D	13	0	0	2	0
All	All	5022	0	4671	127	0

The all-atom clashscore is defined as the number of clashes found per 1000 atoms (including hydrogen atoms). The all-atom clashscore for this structure is 13.

All (127) close contacts within the same asymmetric unit are listed below, sorted by their clash magnitude.

Atom-1	Atom-2	Interatomic distance (Å)	Clash overlap (Å)
1:C:208:LYS:NZ	3:C:501:HOH:O	2.07	0.86
1:C:191:THR:HG22	1:C:279:LYS:HD3	1.60	0.82
1:C:221:GLN:HB3	1:C:222:ARG:HH11	1.43	0.82
1:D:262:GLY:O	1:D:265:VAL:HG12	1.82	0.79
1:B:245:SER:OG	1:C:248:ARG:NH1	2.19	0.73
1:B:296:ASP:OD2	1:B:300:ARG:NH2	2.22	0.72
1:B:214:ARG:NH2	3:B:503:HOH:O	2.22	0.72
1:A:191:THR:HG22	1:A:279:LYS:HD3	1.74	0.69

Continued on next page...

Continued from previous page...

Atom-1	Atom-2	Interatomic distance (Å)	Clash overlap (Å)
1:D:296:ASP:OD2	1:D:300:ARG:NH1	2.25	0.69
1:B:190:ALA:O	3:B:501:HOH:O	2.11	0.69
1:B:196:THR:O	1:B:207:ARG:NH2	2.26	0.69
1:D:239:ASN:OD1	1:D:242:ASP:N	2.26	0.67
1:B:215:ARG:NH2	1:B:319:PHE:O	2.28	0.67
1:B:180:GLU:OE1	1:B:200:GLY:HA3	1.94	0.67
1:A:313:ASP:O	1:A:317:GLU:HG3	1.95	0.66
1:D:245:SER:O	3:D:501:HOH:O	2.13	0.66
1:B:194:LYS:HD3	1:B:214:ARG:HH11	1.61	0.66
1:D:215:ARG:NH2	1:D:319:PHE:O	2.31	0.64
1:B:305:TRP:O	1:B:309:GLN:HG2	1.97	0.64
1:A:288:GLU:O	1:A:292:GLU:HG3	1.99	0.62
1:A:262:GLY:O	1:A:265:VAL:HG12	2.00	0.61
1:D:233:ARG:NH1	3:D:502:HOH:O	2.24	0.61
1:C:221:GLN:HB3	1:C:222:ARG:NH1	2.13	0.60
1:A:258:VAL:O	1:A:263:ARG:NH1	2.35	0.60
1:D:244:LYS:NZ	1:D:289:PRO:HB2	2.17	0.60
1:A:184:ARG:NH1	3:A:503:HOH:O	2.32	0.60
1:A:243:VAL:O	1:A:246:LEU:HB2	2.00	0.60
1:B:187:ARG:NH1	1:B:284:GLU:OE2	2.33	0.59
1:B:175:TYR:HA	1:B:299:VAL:HG21	1.85	0.58
1:B:184:ARG:NH2	1:B:195:ASP:OD2	2.35	0.58
1:A:177:GLN:NE2	1:A:202:SER:OG	2.36	0.58
1:C:237:ILE:HG23	1:C:242:ASP:HB2	1.86	0.57
1:A:310:ARG:NH2	1:A:317:GLU:OE2	2.37	0.57
1:B:194:LYS:HB3	1:B:214:ARG:HH12	1.70	0.56
1:A:197:LYS:HG3	1:B:240:GLU:HB3	1.86	0.56
1:A:173:GLU:OE2	1:A:176:ARG:NH2	2.23	0.56
1:B:288:GLU:O	1:B:292:GLU:HG3	2.05	0.56
1:B:194:LYS:HB3	1:B:214:ARG:NH1	2.21	0.56
1:B:305:TRP:CE3	1:B:306:LEU:HD13	2.41	0.56
1:B:322:GLU:N	1:B:323:ASP:HB2	2.22	0.55
1:D:237:ILE:HG23	1:D:242:ASP:HB2	1.89	0.55
1:C:210:LEU:O	1:C:214:ARG:HG3	2.06	0.54
1:D:222:ARG:HB3	1:D:225:GLU:HB2	1.88	0.54
1:A:202:SER:O	1:A:202:SER:OG	2.18	0.54
1:D:302:LYS:O	1:D:306:LEU:HD12	2.07	0.54
1:D:221:GLN:HE22	1:D:276[A]:LYS:NZ	2.05	0.53
1:A:221:GLN:HB2	1:A:222:ARG:NH1	2.24	0.53
1:B:305:TRP:HE3	1:B:306:LEU:HD13	1.74	0.52
1:B:210:LEU:HD13	1:B:214:ARG:HE	1.74	0.52

Continued on next page...

Continued from previous page...

Atom-1	Atom-2	Interatomic distance (Å)	Clash overlap (Å)
1:D:221:GLN:HB3	1:D:222:ARG:HG3	1.92	0.52
1:D:258:VAL:HG12	1:D:260:ASN:HD22	1.73	0.52
1:A:239:ASN:CG	1:A:240:GLU:N	2.64	0.50
1:A:186:LEU:HD22	1:A:272:ALA:N	2.26	0.50
1:A:218:ASP:HA	1:A:222:ARG:HH12	1.77	0.50
1:B:238:LYS:HD2	1:B:242:ASP:OD1	2.11	0.50
1:B:179:LEU:HD13	1:B:292:GLU:HA	1.94	0.49
1:C:261:TRP:CH2	1:C:315:PHE:HB2	2.47	0.49
1:D:173:GLU:CD	1:D:173:GLU:H	2.16	0.49
1:A:235:LEU:HD13	1:A:246:LEU:HD22	1.94	0.49
1:A:231:MET:O	1:A:235:LEU:HG	2.13	0.49
1:D:277:HIS:O	1:D:280:THR:OG1	2.27	0.48
1:D:260:ASN:O	1:D:264:ILE:HG13	2.13	0.48
1:C:304:ASP:HA	1:C:307:VAL:HG12	1.95	0.48
1:D:204:ALA:HB1	1:D:207:ARG:HH12	1.79	0.48
1:B:195:ASP:OD2	1:B:197:LYS:HG3	2.14	0.47
1:B:262:GLY:O	3:B:502:HOH:O	2.20	0.47
1:B:211:GLU:HA	1:B:214:ARG:HG3	1.96	0.47
1:A:197:LYS:HD2	1:B:241:ASP:OD1	2.15	0.47
1:B:207:ARG:O	1:B:211:GLU:HG3	2.13	0.47
1:A:180:GLU:O	1:A:184:ARG:HG3	2.15	0.47
1:A:282:ASN:HB2	3:A:527:HOH:O	2.14	0.47
1:A:187:ARG:CZ	1:A:187:ARG:HB2	2.44	0.46
1:B:210:LEU:O	1:B:214:ARG:HG3	2.15	0.46
1:A:239:ASN:OD1	1:A:240:GLU:N	2.49	0.46
1:A:190:ALA:HA	1:A:276[A]:LYS:HG2	1.97	0.46
1:D:220:VAL:HG11	1:D:265:VAL:HG13	1.97	0.46
1:B:265:VAL:O	1:B:269:SER:OG	2.18	0.46
1:B:210:LEU:HD12	1:B:214:ARG:HH21	1.81	0.46
1:A:250:MET:HB3	2:A:400:6AL:C31	2.46	0.46
1:A:239:ASN:CG	1:A:240:GLU:H	2.19	0.45
1:A:232:LEU:HD11	1:A:277:HIS:CD2	2.52	0.45
1:C:210:LEU:HD22	1:C:214:ARG:HH21	1.81	0.45
1:A:218:ASP:O	1:A:222:ARG:HG2	2.16	0.45
1:A:261:TRP:CH2	1:A:315:PHE:HB2	2.52	0.45
1:A:235:LEU:HD21	1:A:249:VAL:HG11	1.99	0.45
1:B:256:ASP:O	1:B:263:ARG:NH2	2.48	0.44
1:C:261:TRP:CZ3	1:C:315:PHE:HB2	2.52	0.44
1:B:184:ARG:HD3	1:B:199:MET:HE1	1.99	0.44
1:B:234:LYS:HD3	1:B:234:LYS:HA	1.55	0.44
1:D:244:LYS:HA	1:D:244:LYS:HD3	1.73	0.44

Continued on next page...

Continued from previous page...

Atom-1	Atom-2	Interatomic distance (Å)	Clash overlap (Å)
1:C:205:THR:HG22	3:C:501:HOH:O	2.17	0.44
1:C:279:LYS:HG3	1:C:279:LYS:O	2.18	0.44
1:D:306:LEU:H	1:D:306:LEU:HD12	1.82	0.44
1:D:302:LYS:HB2	1:D:306:LEU:HD11	2.00	0.44
1:B:309:GLN:O	1:B:314:GLY:HA3	2.18	0.43
1:C:180:GLU:HG2	1:C:199:MET:HE3	2.00	0.43
1:A:299:VAL:O	1:A:303:ARG:HB2	2.18	0.43
1:B:304:ASP:O	1:B:307:VAL:HG22	2.19	0.43
1:C:221:GLN:OE1	1:C:222:ARG:NH1	2.51	0.43
1:A:235:LEU:HB3	1:A:246:LEU:HD21	1.99	0.43
1:D:263:ARG:NE	2:D:400:6AL:O20	2.49	0.43
1:A:210:LEU:HD22	1:A:214:ARG:CZ	2.49	0.43
1:C:322:GLU:HG3	1:C:323:ASP:N	2.33	0.43
1:D:187:ARG:O	1:D:191:THR:HG23	2.18	0.42
1:D:284:GLU:HA	1:D:287:ILE:HG13	2.00	0.42
1:D:304:ASP:HA	1:D:307:VAL:HG22	2.01	0.42
1:B:261:TRP:CH2	1:B:315:PHE:HB2	2.54	0.42
1:C:308:LYS:HD2	1:C:308:LYS:HA	1.86	0.42
1:D:249:VAL:O	1:D:253:VAL:HG23	2.19	0.42
1:D:267:LEU:HA	2:D:400:6AL:C23	2.50	0.42
1:D:305:TRP:O	1:D:309:GLN:HG2	2.19	0.42
1:B:199:MET:HG3	1:B:206:SER:HB2	2.00	0.42
1:D:240:GLU:O	1:D:244:LYS:HG2	2.20	0.42
1:A:186:LEU:HD22	1:A:272:ALA:CA	2.50	0.42
1:D:297:VAL:O	1:D:301:THR:OG1	2.29	0.42
1:B:194:LYS:CD	1:B:214:ARG:HH11	2.29	0.42
1:D:218:ASP:N	1:D:218:ASP:OD2	2.53	0.42
1:C:256:ASP:N	1:C:256:ASP:OD1	2.53	0.41
1:D:244:LYS:HZ1	1:D:289:PRO:HB2	1.85	0.41
1:D:302:LYS:O	1:D:303:ARG:C	2.59	0.41
1:C:317:GLU:HA	1:C:320:HIS:HB2	2.02	0.41
1:D:284:GLU:O	1:D:287:ILE:HG13	2.21	0.41
1:C:179:LEU:O	1:C:183:SER:CB	2.69	0.41
1:D:191:THR:OG1	1:D:192:GLY:N	2.53	0.41
1:A:247:SER:HA	1:A:250:MET:HG2	2.03	0.40
1:D:208:LYS:HB3	1:D:208:LYS:HE3	1.90	0.40
1:C:305:TRP:O	1:C:309:GLN:HG2	2.21	0.40

There are no symmetry-related clashes.

5.3 Torsion angles

5.3.1 Protein backbone

In the following table, the Percentiles column shows the percent Ramachandran outliers of the chain as a percentile score with respect to all X-ray entries followed by that with respect to entries of similar resolution.

The Analysed column shows the number of residues for which the backbone conformation was analysed, and the total number of residues.

Mol	Chain	Analysed	Favoured	Allowed	Outliers	Percentiles	
1	A	149/159 (94%)	146 (98%)	3 (2%)	0	100	100
1	B	150/159 (94%)	141 (94%)	8 (5%)	1 (1%)	26	51
1	C	150/159 (94%)	146 (97%)	4 (3%)	0	100	100
1	D	142/159 (89%)	134 (94%)	7 (5%)	1 (1%)	26	51
All	All	591/636 (93%)	567 (96%)	22 (4%)	2 (0%)	46	72

All (2) Ramachandran outliers are listed below:

Mol	Chain	Res	Type
1	D	221	GLN
1	B	197	LYS

5.3.2 Protein sidechains

In the following table, the Percentiles column shows the percent sidechain outliers of the chain as a percentile score with respect to all X-ray entries followed by that with respect to entries of similar resolution.

The Analysed column shows the number of residues for which the sidechain conformation was analysed, and the total number of residues.

Mol	Chain	Analysed	Rotameric	Outliers	Percentiles	
1	A	128/136 (94%)	127 (99%)	1 (1%)	86	95
1	B	129/136 (95%)	124 (96%)	5 (4%)	39	68
1	C	129/136 (95%)	125 (97%)	4 (3%)	47	76
1	D	119/136 (88%)	113 (95%)	6 (5%)	30	56
All	All	505/544 (93%)	489 (97%)	16 (3%)	46	74

All (16) residues with a non-rotameric sidechain are listed below:

Mol	Chain	Res	Type
1	A	202	SER
1	B	184	ARG
1	B	196	THR
1	B	218	ASP
1	B	238	LYS
1	B	249	VAL
1	C	222	ARG
1	C	238	LYS
1	C	256	ASP
1	C	260	ASN
1	D	173	GLU
1	D	189	GLN
1	D	218	ASP
1	D	247	SER
1	D	256	ASP
1	D	284	GLU

Some sidechains can be flipped to improve hydrogen bonding and reduce clashes. All (3) such sidechains are listed below:

Mol	Chain	Res	Type
1	A	177	GLN
1	A	221	GLN
1	D	221	GLN

5.3.3 RNA [i](#)

There are no RNA molecules in this entry.

5.4 Non-standard residues in protein, DNA, RNA chains [i](#)

There are no non-standard protein/DNA/RNA residues in this entry.

5.5 Carbohydrates [i](#)

There are no carbohydrates in this entry.

5.6 Ligand geometry [i](#)

4 ligands are modelled in this entry.

In the following table, the Counts columns list the number of bonds (or angles) for which Mogul statistics could be retrieved, the number of bonds (or angles) that are observed in the model and the number of bonds (or angles) that are defined in the chemical component dictionary. The Link column lists molecule types, if any, to which the group is linked. The Z score for a bond length (or angle) is the number of standard deviations the observed value is removed from the expected value. A bond length (or angle) with $|Z| > 2$ is considered an outlier worth inspection. RMSZ is the root-mean-square of all Z scores of the bond lengths (or angles).

Mol	Type	Chain	Res	Link	Bond lengths			Bond angles		
					Counts	RMSZ	# Z > 2	Counts	RMSZ	# Z > 2
2	6AL	A	400	-	40,47,47	2.22	8 (20%)	48,69,69	2.36	12 (25%)
2	6AL	B	400	-	40,47,47	2.09	8 (20%)	48,69,69	2.17	15 (31%)
2	6AL	C	400	-	40,47,47	2.19	7 (17%)	48,69,69	1.86	10 (20%)
2	6AL	D	400	-	40,47,47	2.14	8 (20%)	48,69,69	2.25	14 (29%)

In the following table, the Chirals column lists the number of chiral outliers, the number of chiral centers analysed, the number of these observed in the model and the number defined in the chemical component dictionary. Similar counts are reported in the Torsion and Rings columns. '-' means no outliers of that kind were identified.

Mol	Type	Chain	Res	Link	Chirals	Torsions	Rings
2	6AL	A	400	-	-	0/15/23/23	0/5/5/5
2	6AL	B	400	-	-	0/15/23/23	0/5/5/5
2	6AL	C	400	-	-	0/15/23/23	0/5/5/5
2	6AL	D	400	-	-	0/15/23/23	0/5/5/5

All (31) bond length outliers are listed below:

Mol	Chain	Res	Type	Atoms	Z	Observed(Å)	Ideal(Å)
2	C	400	6AL	N41-N39	-6.74	1.30	1.37
2	B	400	6AL	N41-N39	-6.67	1.30	1.37
2	D	400	6AL	N41-N39	-6.57	1.30	1.37
2	A	400	6AL	N41-N39	-6.53	1.30	1.37
2	B	400	6AL	C37-N39	-3.67	1.32	1.37
2	D	400	6AL	C37-N39	-3.43	1.32	1.37
2	A	400	6AL	C37-N39	-3.30	1.32	1.37
2	C	400	6AL	C37-N39	-3.03	1.33	1.37
2	B	400	6AL	C35-C06	-2.64	1.39	1.43
2	C	400	6AL	C35-C06	-2.42	1.40	1.43
2	C	400	6AL	C21-C05	2.01	1.45	1.41
2	A	400	6AL	C27-C26	2.11	1.42	1.38
2	D	400	6AL	C11-N10	2.16	1.45	1.41
2	A	400	6AL	C11-N10	2.18	1.45	1.41
2	A	400	6AL	C21-C05	2.26	1.45	1.41

Continued on next page...

Continued from previous page...

Mol	Chain	Res	Type	Atoms	Z	Observed(Å)	Ideal(Å)
2	D	400	6AL	C04-C03	2.40	1.41	1.36
2	B	400	6AL	C04-C03	2.40	1.41	1.36
2	C	400	6AL	O25-C26	2.66	1.44	1.37
2	D	400	6AL	C21-C05	2.69	1.46	1.41
2	B	400	6AL	C21-C05	2.76	1.46	1.41
2	D	400	6AL	O25-C26	2.77	1.44	1.37
2	B	400	6AL	O25-C26	2.82	1.44	1.37
2	A	400	6AL	C09-N10	2.89	1.43	1.35
2	C	400	6AL	C09-N10	2.96	1.43	1.35
2	A	400	6AL	O25-C26	3.07	1.45	1.37
2	B	400	6AL	C09-N10	3.22	1.43	1.35
2	D	400	6AL	C09-N10	3.26	1.44	1.35
2	B	400	6AL	C36-C35	6.95	1.55	1.50
2	D	400	6AL	C36-C35	7.72	1.56	1.50
2	A	400	6AL	C36-C35	8.86	1.56	1.50
2	C	400	6AL	C36-C35	9.09	1.57	1.50

All (51) bond angle outliers are listed below:

Mol	Chain	Res	Type	Atoms	Z	Observed(°)	Ideal(°)
2	D	400	6AL	C28-C33-C31	-5.28	119.10	123.92
2	D	400	6AL	C40-N39-C37	-4.96	121.95	129.03
2	A	400	6AL	C40-N39-C37	-4.44	122.69	129.03
2	B	400	6AL	C28-C33-C31	-4.32	119.97	123.92
2	A	400	6AL	C22-C23-C24	-4.23	98.14	113.27
2	B	400	6AL	C40-N39-C37	-4.23	123.00	129.03
2	A	400	6AL	O20-C09-C08	-4.19	115.84	120.93
2	A	400	6AL	C29-C28-C33	-3.73	115.92	122.33
2	C	400	6AL	C40-N39-C37	-3.62	123.87	129.03
2	A	400	6AL	C26-C27-C28	-3.42	117.20	120.58
2	A	400	6AL	C28-C33-C31	-3.16	121.04	123.92
2	C	400	6AL	C11-N10-C09	-2.96	119.36	126.78
2	B	400	6AL	C11-N10-C09	-2.93	119.44	126.78
2	D	400	6AL	C03-C02-C35	-2.92	118.80	122.23
2	C	400	6AL	C28-C33-C31	-2.76	121.40	123.92
2	C	400	6AL	C29-C28-C33	-2.53	117.97	122.33
2	B	400	6AL	C35-C02-CL	-2.52	118.86	121.81
2	D	400	6AL	C11-N10-C09	-2.50	120.51	126.78
2	D	400	6AL	C26-C27-C28	-2.44	118.17	120.58
2	D	400	6AL	C29-C28-C33	-2.32	118.33	122.33
2	B	400	6AL	O20-C09-C08	-2.32	118.11	120.93
2	B	400	6AL	C03-C02-C35	-2.16	119.69	122.23

Continued on next page...

Continued from previous page...

Mol	Chain	Res	Type	Atoms	Z	Observed(°)	Ideal(°)
2	C	400	6AL	C37-N39-N41	-2.04	110.39	111.84
2	B	400	6AL	C37-N39-N41	-2.04	110.40	111.84
2	A	400	6AL	C03-C02-C35	-2.04	119.84	122.23
2	C	400	6AL	C43-C42-N41	2.04	124.45	119.85
2	C	400	6AL	C27-C28-C33	2.14	119.31	117.51
2	A	400	6AL	C24-O25-C26	2.21	123.92	117.90
2	D	400	6AL	C43-C42-N41	2.28	125.00	119.85
2	B	400	6AL	C27-C28-C33	2.34	119.48	117.51
2	D	400	6AL	C28-C33-CL2	2.37	122.21	118.70
2	D	400	6AL	C02-C35-C06	2.39	120.42	117.00
2	B	400	6AL	C02-C35-C06	2.44	120.48	117.00
2	B	400	6AL	C28-C33-CL2	2.45	122.33	118.70
2	C	400	6AL	C30-C31-C33	2.53	119.64	117.51
2	B	400	6AL	C43-C42-N41	2.61	125.73	119.85
2	D	400	6AL	C08-C09-N10	2.95	117.71	113.67
2	B	400	6AL	C30-C31-C33	3.26	120.25	117.51
2	D	400	6AL	C30-C31-C33	3.53	120.48	117.51
2	B	400	6AL	C08-C09-N10	3.87	118.97	113.67
2	D	400	6AL	C27-C28-C33	3.88	120.78	117.51
2	A	400	6AL	C27-C28-C33	4.10	120.96	117.51
2	C	400	6AL	C40-N39-N41	4.47	125.73	118.04
2	B	400	6AL	C40-N39-N41	4.98	126.61	118.04
2	A	400	6AL	C40-N39-N41	5.09	126.80	118.04
2	D	400	6AL	C40-N39-N41	5.55	127.59	118.04
2	A	400	6AL	C08-C09-N10	5.72	121.51	113.67
2	D	400	6AL	C42-N41-N39	7.23	110.76	104.34
2	A	400	6AL	C42-N41-N39	7.24	110.77	104.34
2	C	400	6AL	C42-N41-N39	7.67	111.16	104.34
2	B	400	6AL	C42-N41-N39	7.98	111.44	104.34

There are no chirality outliers.

There are no torsion outliers.

There are no ring outliers.

2 monomers are involved in 3 short contacts:

Mol	Chain	Res	Type	Clashes	Symm-Clashes
2	A	400	6AL	1	0
2	D	400	6AL	2	0

5.7 Other polymers

There are no such residues in this entry.

5.8 Polymer linkage issues

There are no chain breaks in this entry.

6 Fit of model and data [i](#)

6.1 Protein, DNA and RNA chains [i](#)

In the following table, the column labelled ‘#RSRZ> 2’ contains the number (and percentage) of RSRZ outliers, followed by percent RSRZ outliers for the chain as percentile scores relative to all X-ray entries and entries of similar resolution. The OWAB column contains the minimum, median, 95th percentile and maximum values of the occupancy-weighted average B-factor per residue. The column labelled ‘Q< 0.9’ lists the number of (and percentage) of residues with an average occupancy less than 0.9.

Mol	Chain	Analysed	<RSRZ>	#RSRZ>2	OWAB(Å ²)	Q<0.9
1	A	151/159 (94%)	-0.37	0 100 100	23, 36, 55, 71	0
1	B	152/159 (95%)	-0.34	0 100 100	21, 36, 59, 67	0
1	C	152/159 (95%)	-0.40	0 100 100	27, 41, 59, 75	0
1	D	146/159 (91%)	-0.32	0 100 100	28, 46, 71, 92	0
All	All	601/636 (94%)	-0.36	0 100 100	21, 39, 63, 92	0

There are no RSRZ outliers to report.

6.2 Non-standard residues in protein, DNA, RNA chains [i](#)

There are no non-standard protein/DNA/RNA residues in this entry.

6.3 Carbohydrates [i](#)

There are no carbohydrates in this entry.

6.4 Ligands [i](#)

In the following table, the Atoms column lists the number of modelled atoms in the group and the number defined in the chemical component dictionary. LLDF column lists the quality of electron density of the group with respect to its neighbouring residues in protein, DNA or RNA chains. The B-factors column lists the minimum, median, 95th percentile and maximum values of B factors of atoms in the group. The column labelled ‘Q< 0.9’ lists the number of atoms with occupancy less than 0.9.

Mol	Type	Chain	Res	Atoms	RSCC	RSR	LLDF	B-factors(Å ²)	Q<0.9
2	6AL	A	400	43/43	0.93	0.18	0.72	13,38,59,66	0
2	6AL	D	400	43/43	0.92	0.17	0.71	17,38,65,74	0

Continued on next page...

Continued from previous page...

Mol	Type	Chain	Res	Atoms	RSCC	RSR	LLDF	B-factors(\AA^2)	Q<0.9
2	6AL	C	400	43/43	0.93	0.15	0.13	30,43,55,59	0
2	6AL	B	400	43/43	0.94	0.15	-0.20	7,37,50,54	0

6.5 Other polymers [i](#)

There are no such residues in this entry.