



Full wwPDB X-ray Structure Validation Report ⓘ

Jan 31, 2016 – 08:02 PM GMT

PDB ID : 1II0
Title : CRYSTAL STRUCTURE OF THE ESCHERICHIA COLI ARSENITE-TRANSLOCATING ATPASE
Authors : Zhou, T.; Radaev, S.; Rosen, B.P.; Gatti, D.L.
Deposited on : 2001-04-20
Resolution : 2.40 Å(reported)

This is a Full wwPDB X-ray Structure Validation Report for a publicly released PDB entry.
We welcome your comments at validation@mail.wwpdb.org
A user guide is available at
<http://wwpdb.org/validation/2016/XrayValidationReportHelp>
with specific help available everywhere you see the ⓘ symbol.

The following versions of software and data (see [references ⓘ](#)) were used in the production of this report:

MolProbity : 4.02b-467
Mogul : 1.7 (RC4), CSD as536be (2015)
Xtriage (Phenix) : 1.9-1692
EDS : rb-20026688
Percentile statistics : 20151230.v01 (using entries in the PDB archive December 30th 2015)
Refmac : 5.8.0135
CCP4 : 6.5.0
Ideal geometry (proteins) : Engh & Huber (2001)
Ideal geometry (DNA, RNA) : Parkinson et al. (1996)
Validation Pipeline (wwPDB-VP) : trunk26865

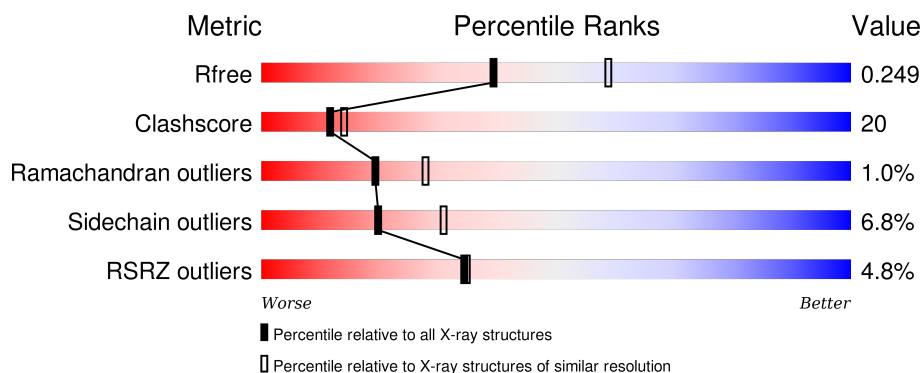
1 Overall quality at a glance

The following experimental techniques were used to determine the structure:

X-RAY DIFFRACTION

The reported resolution of this entry is 2.40 Å.

Percentile scores (ranging between 0-100) for global validation metrics of the entry are shown in the following graphic. The table shows the number of entries on which the scores are based.



Metric	Whole archive (#Entries)	Similar resolution (#Entries, resolution range(Å))
R_{free}	91344	2919 (2.40-2.40)
Clashscore	102246	3407 (2.40-2.40)
Ramachandran outliers	100387	3351 (2.40-2.40)
Sidechain outliers	100360	3352 (2.40-2.40)
RSRZ outliers	91569	2928 (2.40-2.40)

The table below summarises the geometric issues observed across the polymeric chains and their fit to the electron density. The red, orange, yellow and green segments on the lower bar indicate the fraction of residues that contain outliers for ≥ 3 , 2, 1 and 0 types of geometric quality criteria. A grey segment represents the fraction of residues that are not modelled. The numeric value for each fraction is indicated below the corresponding segment, with a dot representing fractions $\leq 5\%$. The upper red bar (where present) indicates the fraction of residues that have poor fit to the electron density. The numeric value is given above the bar.

Mol	Chain	Length	Quality of chain
1	A	589	<div> <div>4%</div> <div>60%</div> <div>29%</div> <div>7%</div> </div>
1	B	589	<div> <div>5%</div> <div>61%</div> <div>30%</div> <div>6%</div> </div>

The following table lists non-polymeric compounds, carbohydrate monomers and non-standard residues in protein, DNA, RNA chains that are outliers for geometric or electron-density-fit criteria:

Mol	Type	Chain	Res	Chirality	Geometry	Clashes	Electron density
3	CL	B	1599	-	-	-	X
3	CL	B	4001	-	-	X	-
7	TAS	A	701	-	-	-	X
7	TAS	B	1701	-	-	-	X

2 Entry composition

There are 8 unique types of molecules in this entry. The entry contains 8927 atoms, of which 0 are hydrogens and 0 are deuteriums.

In the tables below, the ZeroOcc column contains the number of atoms modelled with zero occupancy, the AltConf column contains the number of residues with at least one atom in alternate conformation and the Trace column contains the number of residues modelled with at most 2 atoms.

- Molecule 1 is a protein called ARSENICAL PUMP-DRIVING ATPASE.

Mol	Chain	Residues	Atoms					ZeroOcc	AltConf	Trace
1	A	550	Total	C	N	O	S	0	0	0
			4201	2642	743	801	15			
1	B	553	Total	C	N	O	S	0	0	0
			4224	2655	748	806	15			

There are 14 discrepancies between the modelled and reference sequences:

Chain	Residue	Modelled	Actual	Comment	Reference
A	60	ASN	ILE	SEE REMARK 999	UNP P08690
A	584	HIS	-	EXPRESSION TAG	UNP P08690
A	585	HIS	-	EXPRESSION TAG	UNP P08690
A	586	HIS	-	EXPRESSION TAG	UNP P08690
A	587	HIS	-	EXPRESSION TAG	UNP P08690
A	588	HIS	-	EXPRESSION TAG	UNP P08690
A	589	HIS	-	EXPRESSION TAG	UNP P08690
B	1060	ASN	ILE	SEE REMARK 999	UNP P08690
B	1584	HIS	-	EXPRESSION TAG	UNP P08690
B	1585	HIS	-	EXPRESSION TAG	UNP P08690
B	1586	HIS	-	EXPRESSION TAG	UNP P08690
B	1587	HIS	-	EXPRESSION TAG	UNP P08690
B	1588	HIS	-	EXPRESSION TAG	UNP P08690
B	1589	HIS	-	EXPRESSION TAG	UNP P08690

- Molecule 2 is CADMIUM ION (three-letter code: CD) (formula: Cd).

Mol	Chain	Residues	Atoms		ZeroOcc	AltConf
2	B	8	Total	Cd	0	0
			8	8		
2	A	9	Total	Cd	0	0
			9	9		

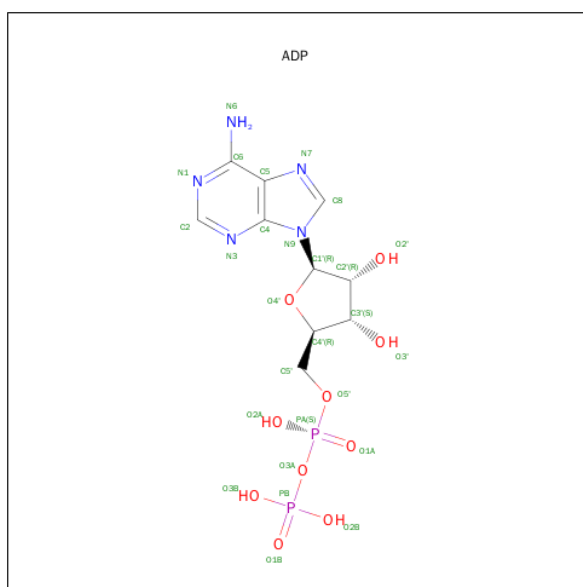
- Molecule 3 is CHLORIDE ION (three-letter code: CL) (formula: Cl).

Mol	Chain	Residues	Atoms	ZeroOcc	AltConf
3	B	4	Total Cl 4 4	0	0
3	A	3	Total Cl 3 3	0	0

- Molecule 4 is MAGNESIUM ION (three-letter code: MG) (formula: Mg).

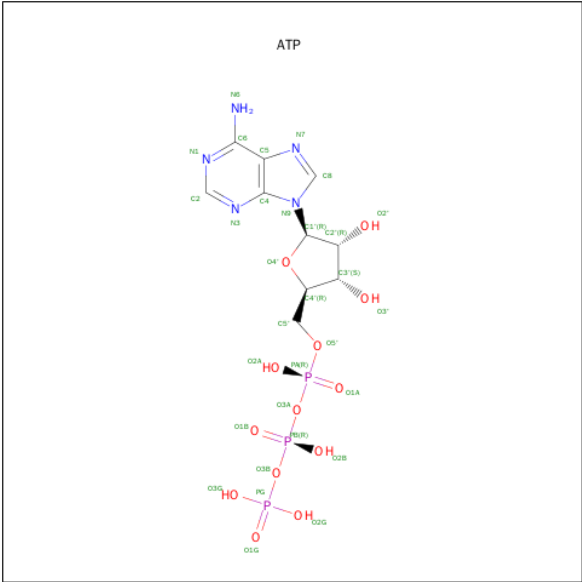
Mol	Chain	Residues	Atoms	ZeroOcc	AltConf
4	B	2	Total Mg 2 2	0	0
4	A	2	Total Mg 2 2	0	0

- Molecule 5 is ADENOSINE-5'-DIPHOSPHATE (three-letter code: ADP) (formula: $C_{10}H_{15}N_5O_{10}P_2$).



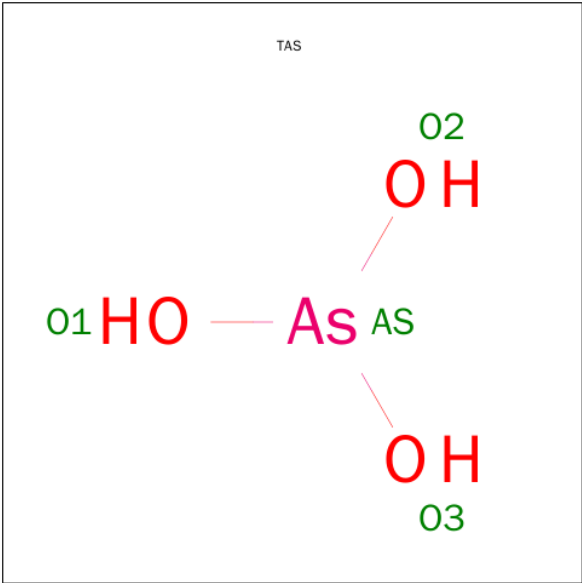
Mol	Chain	Residues	Atoms	ZeroOcc	AltConf
5	A	1	Total C N O P 27 10 5 10 2	0	0
5	B	1	Total C N O P 27 10 5 10 2	0	0

- Molecule 6 is ADENOSINE-5'-TRIPHOSPHATE (three-letter code: ATP) (formula: $C_{10}H_{16}N_5O_{13}P_3$).



Mol	Chain	Residues	Atoms					ZeroOcc	AltConf
6	A	1	Total	C	N	O	P	0	0
			31	10	5	13	3		
6	B	1	Total	C	N	O	P	0	0
			31	10	5	13	3		

- Molecule 7 is TRIHYDROXYARSENITE(III) (three-letter code: TAS) (formula: AsH₃O₃).



Mol	Chain	Residues	Atoms			ZeroOcc	AltConf
7	A	1	Total	As	O	0	0
			4	1	3		
7	B	1	Total	As	O	0	0
			4	1	3		

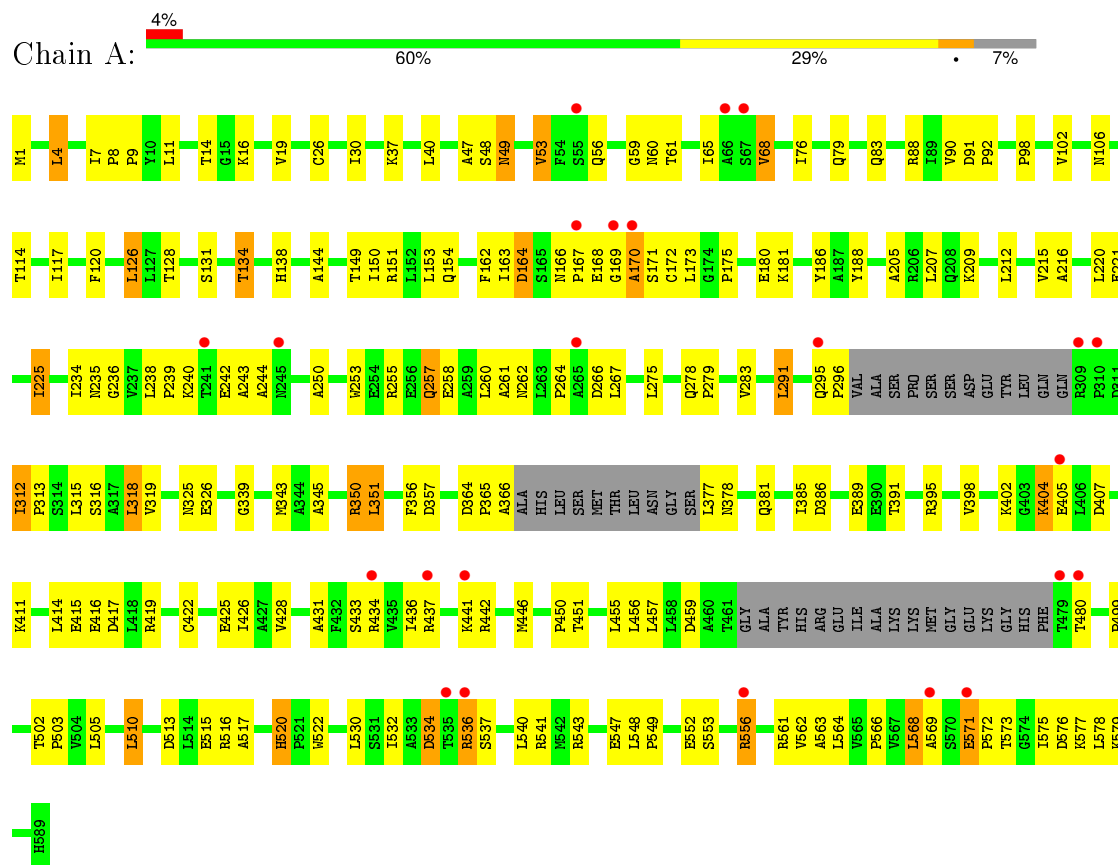
- Molecule 8 is water.

Mol	Chain	Residues	Atoms		ZeroOcc	AltConf
8	A	171	Total 171	O 171	0	0
8	B	179	Total 179	O 179	0	0

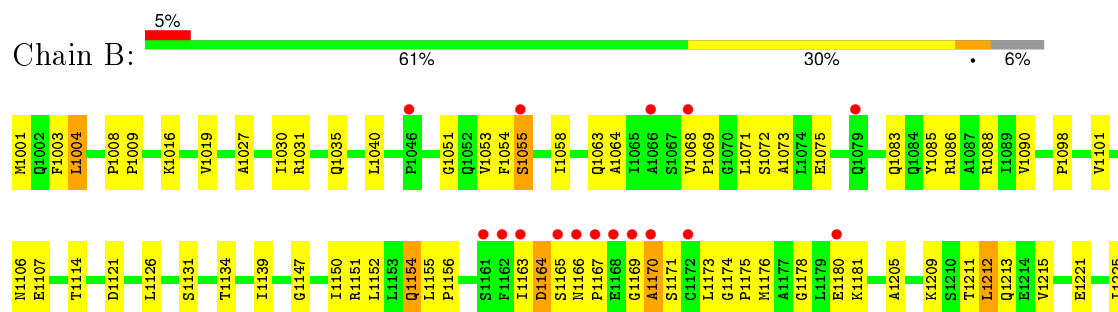
3 Residue-property plots

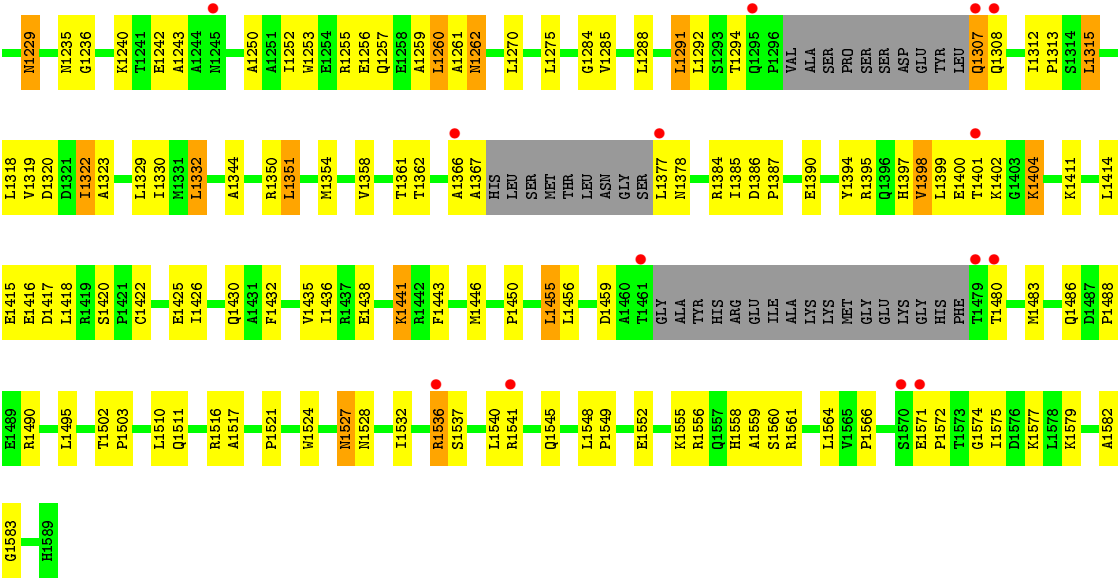
These plots are drawn for all protein, RNA and DNA chains in the entry. The first graphic for a chain summarises the proportions of errors displayed in the second graphic. The second graphic shows the sequence view annotated by issues in geometry and electron density. Residues are color-coded according to the number of geometric quality criteria for which they contain at least one outlier: green = 0, yellow = 1, orange = 2 and red = 3 or more. A red dot above a residue indicates a poor fit to the electron density ($RSRZ > 2$). Stretches of 2 or more consecutive residues without any outlier are shown as a green connector. Residues present in the sample, but not in the model, are shown in grey.

• Molecule 1: ARSENICAL PUMP-DRIVING ATPASE



• Molecule 1: ARSENICAL PUMP-DRIVING ATPASE





4 Data and refinement statistics

Property	Value	Source
Space group	P 21 21 2	Depositor
Cell constants a, b, c, α , β , γ	76.73Å 222.19Å 74.13Å 90.00° 90.00° 90.00°	Depositor
Resolution (Å)	28.61 – 2.40 30.43 – 2.40	Depositor EDS
% Data completeness (in resolution range)	90.0 (28.61-2.40) 89.7 (30.43-2.40)	Depositor EDS
R_{merge}	0.08	Depositor
R_{sym}	(Not available)	Depositor
$\langle I/\sigma(I) \rangle$ ¹	1.61 (at 2.39Å)	Xtriage
Refinement program	CNS 1.0	Depositor
R, R_{free}	0.210 , 0.252 0.208 , 0.249	Depositor DCC
R_{free} test set	4564 reflections (11.18%)	DCC
Wilson B-factor (Å ²)	34.3	Xtriage
Anisotropy	0.038	Xtriage
Bulk solvent k_{sol} (e/Å ³), B_{sol} (Å ²)	0.32 , 44.3	EDS
Estimated twinning fraction	0.020 for l,-k,h	Xtriage
L-test for twinning ²	$\langle L \rangle = 0.49$, $\langle L^2 \rangle = 0.32$	Xtriage
Outliers	0 of 46906 reflections	Xtriage
F_o, F_c correlation	0.94	EDS
Total number of atoms	8927	wwPDB-VP
Average B, all atoms (Å ²)	40.0	wwPDB-VP

Xtriage's analysis on translational NCS is as follows: *The largest off-origin peak in the Patterson function is 4.47% of the height of the origin peak. No significant pseudotranslation is detected.*

¹Intensities estimated from amplitudes.

²Theoretical values of $\langle |L| \rangle$, $\langle L^2 \rangle$ for acentric reflections are 0.5, 0.375 respectively for untwinned datasets, and 0.333, 0.2 for perfectly twinned datasets.

5 Model quality [i](#)

5.1 Standard geometry [i](#)

Bond lengths and bond angles in the following residue types are not validated in this section: MG, ADP, CL, TAS, CD, ATP

The Z score for a bond length (or angle) is the number of standard deviations the observed value is removed from the expected value. A bond length (or angle) with $|Z| > 5$ is considered an outlier worth inspection. RMSZ is the root-mean-square of all Z scores of the bond lengths (or angles).

Mol	Chain	Bond lengths		Bond angles	
		RMSZ	# Z >5	RMSZ	# Z >5
1	A	0.33	0/4273	0.61	0/5810
1	B	0.32	0/4296	0.61	0/5841
All	All	0.33	0/8569	0.61	0/11651

There are no bond length outliers.

There are no bond angle outliers.

There are no chirality outliers.

There are no planarity outliers.

5.2 Too-close contacts [i](#)

In the following table, the Non-H and H(model) columns list the number of non-hydrogen atoms and hydrogen atoms in the chain respectively. The H(added) column lists the number of hydrogen atoms added and optimized by MolProbity. The Clashes column lists the number of clashes within the asymmetric unit, whereas Symm-Clashes lists symmetry related clashes.

Mol	Chain	Non-H	H(model)	H(added)	Clashes	Symm-Clashes
1	A	4201	0	4261	166	0
1	B	4224	0	4279	179	0
2	A	9	0	0	0	0
2	B	8	0	0	0	0
3	A	3	0	0	0	0
3	B	4	0	0	3	0
4	A	2	0	0	0	0
4	B	2	0	0	0	0
5	A	27	0	12	2	0
5	B	27	0	12	2	0
6	A	31	0	12	0	0

Continued on next page...

Continued from previous page...

Mol	Chain	Non-H	H(model)	H(added)	Clashes	Symm-Clashes
6	B	31	0	12	1	0
7	A	4	0	0	1	0
7	B	4	0	0	0	0
8	A	171	0	0	10	0
8	B	179	0	0	13	0
All	All	8927	0	8588	348	0

The all-atom clashscore is defined as the number of clashes found per 1000 atoms (including hydrogen atoms). The all-atom clashscore for this structure is 20.

All (348) close contacts within the same asymmetric unit are listed below, sorted by their clash magnitude.

Atom-1	Atom-2	Interatomic distance (Å)	Clash overlap (Å)
1:B:1436:ILE:HG12	1:B:1446:MET:HE2	1.47	0.96
1:A:385:ILE:HD11	1:A:428:VAL:HG13	1.45	0.95
1:B:1209:LYS:HG2	1:B:1213:GLN:HE21	1.31	0.94
1:A:381:GLN:NE2	1:A:442:ARG:HH22	1.67	0.93
1:B:1170:ALA:HB3	1:B:1402:LYS:HZ3	1.34	0.92
1:A:49:ASN:HD22	1:A:49:ASN:H	1.17	0.90
1:A:235:ASN:HD21	5:A:590:ADP:HN61	1.17	0.89
1:B:1205:ALA:HB2	1:B:1215:VAL:HG21	1.56	0.86
1:B:1169:GLY:HA3	1:B:1398:VAL:HG21	1.56	0.85
1:B:1307:GLN:HG2	1:B:1308:GLN:H	1.41	0.82
1:A:235:ASN:ND2	5:A:590:ADP:HN61	1.77	0.82
1:B:1151:ARG:O	1:B:1154:GLN:HG2	1.80	0.81
1:A:381:GLN:HE21	1:A:442:ARG:HH22	1.29	0.79
1:B:1527:ASN:ND2	1:B:1528:ASN:H	1.81	0.78
1:A:56:GLN:HE22	1:A:65:ILE:HA	1.49	0.78
1:A:16:LYS:HG2	1:A:19:VAL:HG13	1.63	0.77
1:A:131:SER:O	1:A:134:THR:HB	1.84	0.77
1:A:170:ALA:HB3	1:A:402:LYS:NZ	2.00	0.76
1:B:1243:ALA:HB1	1:B:1250:ALA:HA	1.68	0.75
1:B:1527:ASN:HD21	6:B:1591:ATP:HN61	1.32	0.75
1:B:1027:ALA:HB1	1:B:1292:LEU:HD21	1.69	0.75
1:A:275:LEU:HD13	1:A:291:LEU:HD22	1.66	0.75
1:A:56:GLN:NE2	1:A:65:ILE:HA	2.03	0.74
1:B:1322:ILE:HD13	1:B:1330:ILE:HD11	1.70	0.74
1:B:1532:ILE:HG23	1:B:1566:PRO:HB3	1.70	0.73
1:B:1459:ASP:HA	1:B:1480:THR:HG21	1.68	0.73
1:B:1209:LYS:HG2	1:B:1213:GLN:NE2	2.04	0.73
1:A:386:ASP:HB3	1:A:389:GLU:HG2	1.72	0.72

Continued on next page...

Continued from previous page...

Atom-1	Atom-2	Interatomic distance (Å)	Clash overlap (Å)
1:B:1170:ALA:HB3	1:B:1402:LYS:NZ	2.05	0.72
1:A:128:THR:HG22	1:A:188:TYR:HD2	1.54	0.71
1:A:264:PRO:HG2	1:A:267:LEU:HD12	1.72	0.71
1:A:79:GLN:O	1:A:83:GLN:HG3	1.90	0.71
1:B:1425:GLU:HG2	8:B:2306:HOH:O	1.90	0.71
1:B:1261:ALA:C	1:B:1262:ASN:HD22	1.94	0.70
1:B:1436:ILE:HG12	1:B:1446:MET:CE	2.20	0.70
1:A:326:GLU:HG2	1:A:356:PHE:CE1	2.26	0.70
1:A:459:ASP:HA	1:A:480:THR:HG21	1.74	0.70
1:B:1163:ILE:HD12	1:B:1173:LEU:CD1	2.23	0.69
3:B:1599:CL:CL	8:B:2333:HOH:O	2.48	0.69
1:A:357:ASP:O	1:A:442:ARG:HB2	1.93	0.69
1:B:1169:GLY:CA	1:B:1398:VAL:HG21	2.22	0.68
1:B:1322:ILE:HD11	1:B:1351:LEU:HD21	1.73	0.68
1:B:1063:GLN:HG2	8:B:2314:HOH:O	1.93	0.68
1:B:1211:THR:O	1:B:1215:VAL:HG23	1.94	0.68
1:A:170:ALA:HB3	1:A:402:LYS:HZ1	1.59	0.67
1:B:1019:VAL:HG11	8:B:2061:HOH:O	1.93	0.66
1:B:1170:ALA:CB	1:B:1402:LYS:HZ3	2.06	0.66
1:B:1114:THR:OG1	1:B:1175:PRO:HG3	1.95	0.66
3:B:4001:CL:CL	8:B:2195:HOH:O	2.50	0.66
1:B:1169:GLY:C	1:B:1171:SER:H	1.99	0.66
1:A:537:SER:OG	1:A:540:LEU:HD23	1.95	0.66
1:B:1436:ILE:CG1	1:B:1446:MET:HE2	2.24	0.65
1:A:433:SER:HA	1:A:436:ILE:HG13	1.77	0.65
1:A:49:ASN:N	1:A:49:ASN:HD22	1.85	0.65
1:B:1262:ASN:HD22	1:B:1262:ASN:N	1.90	0.65
1:B:1166:ASN:HB2	1:B:1402:LYS:NZ	2.12	0.65
1:B:1235:ASN:ND2	1:B:1236:GLY:H	1.94	0.65
1:A:576:ASP:HB2	1:A:577:LYS:NZ	2.11	0.64
1:A:169:GLY:HA3	1:A:398:VAL:HG11	1.77	0.64
1:B:1169:GLY:HA3	1:B:1398:VAL:CG2	2.27	0.64
1:B:1411:LYS:O	1:B:1415:GLU:HG3	1.97	0.63
1:B:1001:MET:HB2	1:B:1004:LEU:HD22	1.80	0.63
1:B:1121:ASP:OD1	1:B:1181:LYS:HE2	1.98	0.63
3:B:4001:CL:CL	8:B:3029:HOH:O	2.52	0.63
1:A:502:THR:HB	1:A:503:PRO:HD3	1.80	0.63
1:A:205:ALA:HB2	1:A:215:VAL:HG21	1.80	0.63
1:A:318:LEU:HD22	1:A:522:TRP:HZ3	1.64	0.63
1:A:163:ILE:HD12	1:A:173:LEU:CD1	2.29	0.62
1:B:1235:ASN:HD21	5:B:1590:ADP:HN61	1.46	0.62

Continued on next page...

Continued from previous page...

Atom-1	Atom-2	Interatomic distance (Å)	Clash overlap (Å)
1:B:1307:GLN:CG	1:B:1308:GLN:H	2.12	0.62
1:A:166:ASN:HB3	1:A:167:PRO:HD2	1.82	0.62
1:B:1400:GLU:HG3	1:B:1401:THR:N	2.14	0.62
1:A:16:LYS:HG2	1:A:19:VAL:CG1	2.30	0.61
1:B:1404:LYS:HA	1:B:1404:LYS:HE3	1.81	0.61
1:B:1151:ARG:NH1	1:B:1416:GLU:OE2	2.33	0.61
1:A:170:ALA:HA	1:A:417:ASP:OD2	2.01	0.61
1:A:436:ILE:HG12	1:A:446:MET:CE	2.31	0.61
1:A:513:ASP:OD1	1:A:516:ARG:NH1	2.34	0.60
1:A:166:ASN:HD22	1:A:166:ASN:N	1.98	0.60
1:B:1307:GLN:HB2	8:B:2346:HOH:O	2.00	0.60
1:B:1235:ASN:HD22	1:B:1275:LEU:HB2	1.66	0.60
1:B:1318:LEU:O	1:B:1322:ILE:HG23	2.01	0.60
1:B:1086:ARG:HG2	1:B:1106:ASN:ND2	2.17	0.60
1:A:169:GLY:C	1:A:171:SER:H	2.06	0.59
1:A:532:ILE:O	1:A:532:ILE:HG12	2.02	0.59
1:B:1131:SER:O	1:B:1134:THR:HB	2.03	0.59
1:B:1548:LEU:HB2	1:B:1549:PRO:HD3	1.83	0.58
1:A:319:VAL:HG13	1:A:351:LEU:HD13	1.84	0.58
1:A:436:ILE:HG12	1:A:446:MET:HE3	1.83	0.58
1:A:499:PRO:HB2	1:A:547:GLU:HB3	1.85	0.58
1:B:1307:GLN:HG2	1:B:1308:GLN:N	2.17	0.58
1:B:1575:ILE:O	1:B:1579:LYS:HG3	2.03	0.57
1:A:220:LEU:HD11	1:A:266:ASP:OD1	2.04	0.57
1:B:1107:GLU:OE1	1:B:1516:ARG:NH2	2.36	0.57
1:A:151:ARG:HD2	1:A:416:GLU:OE1	2.03	0.57
1:A:238:LEU:HD22	1:A:239:PRO:HD2	1.87	0.57
1:A:450:PRO:HB2	1:A:455:LEU:HD22	1.87	0.57
1:B:1163:ILE:HD12	1:B:1173:LEU:HD13	1.86	0.57
1:A:19:VAL:HG11	8:A:2153:HOH:O	2.03	0.57
1:A:168:GLU:O	1:A:402:LYS:HD2	2.05	0.57
1:B:1502:THR:HB	1:B:1503:PRO:HD3	1.86	0.57
1:B:1262:ASN:ND2	1:B:1262:ASN:N	2.53	0.56
1:A:319:VAL:CG1	1:A:351:LEU:HD13	2.35	0.56
1:B:1555:LYS:HE3	1:B:1556:ARG:NH1	2.21	0.56
1:A:548:LEU:HB2	1:A:549:PRO:HD3	1.87	0.56
1:B:1397:HIS:O	1:B:1401:THR:HG22	2.04	0.56
1:B:1051:GLY:HA2	1:B:1058:ILE:HG12	1.86	0.56
1:B:1332:LEU:HD13	1:B:1344:ALA:HB2	1.87	0.56
1:B:1319:VAL:HG13	1:B:1351:LEU:HD13	1.86	0.56
1:B:1235:ASN:ND2	5:B:1590:ADP:HN61	2.04	0.56

Continued on next page...

Continued from previous page...

Atom-1	Atom-2	Interatomic distance (Å)	Clash overlap (Å)
1:A:350:ARG:NH1	8:A:3014:HOH:O	2.29	0.55
1:A:571:GLU:O	1:A:573:THR:N	2.36	0.55
1:A:441:LYS:HD3	8:A:2252:HOH:O	2.07	0.55
1:B:1284:GLY:O	1:B:1288:LEU:HD22	2.07	0.55
1:A:404:LYS:HB3	1:A:405:GLU:OE1	2.06	0.55
1:A:240:LYS:HB2	1:A:253:TRP:HE1	1.72	0.55
1:A:515:GLU:OE1	1:A:520:HIS:CE1	2.60	0.55
1:B:1329:LEU:HD11	1:B:1446:MET:CE	2.37	0.55
1:A:318:LEU:HD22	1:A:522:TRP:CZ3	2.42	0.55
1:A:181:LYS:HB2	1:A:186:TYR:CZ	2.42	0.55
1:A:275:LEU:HD13	1:A:291:LEU:CD2	2.36	0.55
1:A:151:ARG:O	1:A:154:GLN:HG2	2.06	0.55
1:A:76:ILE:HD11	1:A:126:LEU:HD21	1.89	0.55
1:B:1169:GLY:HA2	1:B:1418:LEU:HD21	1.89	0.54
1:B:1527:ASN:HD22	1:B:1528:ASN:H	1.52	0.54
1:B:1385:ILE:HD13	1:B:1390:GLU:HG3	1.89	0.54
1:A:68:VAL:O	1:A:68:VAL:HG22	2.07	0.54
1:A:571:GLU:HA	1:A:571:GLU:OE2	2.06	0.54
1:A:8:PRO:O	1:A:138:HIS:HD2	1.90	0.54
1:A:561:ARG:NH1	8:A:3003:HOH:O	2.35	0.54
1:B:1329:LEU:HD11	1:B:1446:MET:HE3	1.90	0.54
1:A:172:CYS:SG	8:A:2223:HOH:O	2.58	0.54
1:A:49:ASN:ND2	1:A:49:ASN:N	2.56	0.54
1:B:1558:HIS:HD2	8:B:2109:HOH:O	1.90	0.54
1:A:255:ARG:HD3	8:A:2278:HOH:O	2.07	0.54
1:A:170:ALA:HB3	1:A:402:LYS:HZ3	1.72	0.53
1:A:319:VAL:HG11	1:A:350:ARG:HG3	1.91	0.53
1:A:431:ALA:O	1:A:434:ARG:HB2	2.08	0.53
1:A:425:GLU:CG	1:A:450:PRO:HA	2.39	0.53
1:B:1252:ILE:O	1:B:1256:GLU:HG3	2.09	0.53
1:A:207:LEU:HG	1:A:234:ILE:HG21	1.89	0.53
1:B:1051:GLY:CA	1:B:1058:ILE:HG12	2.39	0.53
1:A:120:PHE:CD1	1:A:153:LEU:HD12	2.44	0.53
1:A:385:ILE:CD1	1:A:428:VAL:HG13	2.29	0.52
1:B:1527:ASN:ND2	1:B:1528:ASN:N	2.56	0.52
1:A:350:ARG:HB2	1:A:350:ARG:HH11	1.75	0.52
1:B:1574:GLY:H	1:B:1577:LYS:HE3	1.75	0.52
1:B:1275:LEU:HD13	1:B:1291:LEU:HD22	1.92	0.52
1:A:260:LEU:C	1:A:260:LEU:HD13	2.29	0.52
1:B:1308:GLN:OE1	1:B:1545:GLN:HG3	2.09	0.52
1:B:1068:VAL:HG11	1:B:1071:LEU:HD23	1.91	0.52

Continued on next page...

Continued from previous page...

Atom-1	Atom-2	Interatomic distance (Å)	Clash overlap (Å)
1:B:1459:ASP:HA	1:B:1480:THR:CG2	2.36	0.52
1:B:1166:ASN:HB3	1:B:1167:PRO:HD2	1.92	0.52
1:B:1398:VAL:HG11	1:B:1418:LEU:HD21	1.92	0.52
1:B:1164:ASP:HB3	1:B:1166:ASN:HD21	1.74	0.51
1:B:1417:ASP:O	1:B:1420:SER:HB2	2.10	0.51
1:A:26:CYS:O	1:A:30:ILE:HG13	2.10	0.51
1:A:128:THR:HG22	1:A:188:TYR:CD2	2.42	0.51
1:A:326:GLU:HG2	1:A:356:PHE:CZ	2.46	0.51
1:A:425:GLU:HG3	1:A:450:PRO:HA	1.92	0.51
1:A:404:LYS:HE3	1:A:405:GLU:OE1	2.11	0.51
1:A:240:LYS:HA	1:A:253:TRP:CD1	2.45	0.51
1:B:1320:ASP:O	1:B:1323:ALA:HB3	2.11	0.51
1:A:381:GLN:HE21	1:A:442:ARG:NH2	2.03	0.51
1:B:1150:ILE:HG21	1:B:1225:ILE:HG21	1.92	0.51
1:B:1205:ALA:CB	1:B:1215:VAL:HG21	2.37	0.51
1:B:1367:ALA:C	1:B:1384:ARG:HH12	2.14	0.51
1:A:262:ASN:N	1:A:262:ASN:HD22	2.07	0.51
1:A:235:ASN:ND2	1:A:236:GLY:H	2.08	0.50
1:A:98:PRO:O	1:A:102:VAL:HG23	2.12	0.50
1:B:1053:VAL:HG13	1:B:1288:LEU:HD21	1.92	0.50
1:A:283:VAL:O	1:A:283:VAL:HG22	2.10	0.50
1:B:1395:ARG:HG2	1:B:1418:LEU:HB3	1.93	0.50
1:A:451:THR:O	1:A:455:LEU:HD23	2.12	0.50
1:B:1085:TYR:CD2	1:B:1178:GLY:HA3	2.47	0.50
1:A:534:ASP:OD2	1:A:534:ASP:N	2.37	0.50
1:B:1064:ALA:HA	1:B:1072:SER:HA	1.94	0.50
1:A:576:ASP:HB2	1:A:577:LYS:HZ3	1.76	0.50
1:B:1147:GLY:HA2	1:B:1225:ILE:CD1	2.42	0.50
1:A:90:VAL:HG13	1:A:102:VAL:HG13	1.94	0.49
1:A:536:ARG:HA	1:A:541:ARG:NH2	2.27	0.49
1:B:1086:ARG:HG2	1:B:1106:ASN:HD21	1.77	0.49
1:B:1252:ILE:HD12	1:B:1540:LEU:HD21	1.94	0.49
1:A:163:ILE:HD12	1:A:173:LEU:HD13	1.94	0.49
1:B:1166:ASN:HD22	1:B:1166:ASN:N	2.10	0.49
1:B:1003:PHE:CE1	1:B:1004:LEU:HD13	2.47	0.49
1:A:395:ARG:HB3	1:A:395:ARG:NH1	2.28	0.49
1:A:422:CYS:HA	1:A:425:GLU:HB3	1.94	0.49
1:A:14:THR:HB	1:A:144:ALA:HB3	1.95	0.49
1:B:1068:VAL:CG1	1:B:1071:LEU:HD23	2.42	0.49
1:A:16:LYS:CG	1:A:19:VAL:HG13	2.41	0.49
1:B:1438:GLU:HA	1:B:1441:LYS:CE	2.43	0.49

Continued on next page...

Continued from previous page...

Atom-1	Atom-2	Interatomic distance (Å)	Clash overlap (Å)
1:B:1169:GLY:C	1:B:1171:SER:N	2.66	0.48
1:A:433:SER:HA	1:A:436:ILE:CG1	2.42	0.48
1:A:166:ASN:ND2	1:A:166:ASN:N	2.61	0.48
1:B:1008:PRO:HB2	1:B:1009:PRO:HD2	1.94	0.48
1:B:1561:ARG:HG2	1:B:1561:ARG:HH11	1.78	0.48
1:A:552:GLU:OE1	1:A:556:ARG:HD2	2.13	0.48
1:B:1361:THR:HG21	1:B:1435:VAL:HG21	1.95	0.48
1:B:1085:TYR:CE2	1:B:1178:GLY:HA3	2.49	0.48
1:A:117:ILE:HD13	1:A:149:THR:HG23	1.95	0.48
1:B:1398:VAL:HG11	1:B:1418:LEU:CD2	2.44	0.48
1:A:114:THR:OG1	1:A:175:PRO:HG3	2.13	0.48
1:B:1394:TYR:O	1:B:1398:VAL:HG12	2.13	0.48
1:A:404:LYS:HE3	1:A:405:GLU:CD	2.34	0.48
1:B:1422:CYS:O	1:B:1426:ILE:HG13	2.14	0.48
1:B:1174:GLY:N	1:B:1175:PRO:CD	2.76	0.48
1:A:260:LEU:O	1:A:260:LEU:HD13	2.14	0.48
1:B:1166:ASN:HB2	1:B:1402:LYS:CE	2.43	0.47
1:A:240:LYS:HB2	1:A:253:TRP:NE1	2.29	0.47
1:B:1088:ARG:HD3	1:B:1180:GLU:OE2	2.14	0.47
1:A:169:GLY:O	1:A:171:SER:N	2.47	0.47
1:B:1001:MET:CE	1:B:1294:THR:HG22	2.43	0.47
1:B:1555:LYS:HE3	1:B:1556:ARG:HH11	1.79	0.47
1:B:1459:ASP:CA	1:B:1480:THR:HG21	2.40	0.47
1:A:173:LEU:HG	1:A:417:ASP:CG	2.35	0.47
1:A:8:PRO:HB2	1:A:9:PRO:HD2	1.96	0.47
1:A:395:ARG:HH11	1:A:395:ARG:HB3	1.79	0.47
1:B:1490:ARG:HB3	8:B:2154:HOH:O	2.14	0.47
1:A:162:PHE:HA	8:A:2316:HOH:O	2.14	0.47
1:A:364:ASP:OD1	1:A:365:PRO:HD2	2.15	0.47
1:B:1260:LEU:HD13	1:B:1260:LEU:O	2.15	0.47
1:A:150:ILE:HB	1:A:225:ILE:HD13	1.97	0.47
1:B:1240:LYS:HA	1:B:1253:TRP:CD1	2.49	0.47
1:B:1486:GLN:O	1:B:1488:PRO:HD3	2.14	0.47
1:A:37:LYS:HE3	8:A:2296:HOH:O	2.15	0.47
1:B:1173:LEU:O	1:B:1176:MET:HG2	2.15	0.47
1:B:1351:LEU:HB3	1:B:1358:VAL:HG21	1.97	0.46
1:A:386:ASP:HB3	1:A:389:GLU:CG	2.44	0.46
1:B:1385:ILE:C	1:B:1385:ILE:HD12	2.36	0.46
1:B:1098:PRO:HB2	1:B:1101:VAL:HG23	1.98	0.46
1:B:1243:ALA:CB	1:B:1250:ALA:HA	2.42	0.46
1:A:325:ASN:O	1:A:326:GLU:HB2	2.15	0.46

Continued on next page...

Continued from previous page...

Atom-1	Atom-2	Interatomic distance (Å)	Clash overlap (Å)
1:A:16:LYS:O	1:A:19:VAL:HG22	2.15	0.46
1:B:1456:LEU:HD21	1:B:1517:ALA:HA	1.97	0.46
1:B:1400:GLU:O	1:B:1404:LYS:HD2	2.15	0.46
1:A:1:MET:HB2	1:A:4:LEU:CD2	2.45	0.46
1:A:1:MET:HB2	1:A:4:LEU:HD23	1.98	0.46
1:B:1164:ASP:HB3	1:B:1166:ASN:ND2	2.30	0.46
1:B:1438:GLU:HA	1:B:1441:LYS:HE2	1.97	0.46
1:B:1432:PHE:O	1:B:1435:VAL:HG22	2.15	0.45
1:A:235:ASN:HD22	1:A:275:LEU:HB2	1.81	0.45
1:B:1312:ILE:HG22	1:B:1313:PRO:O	2.16	0.45
1:A:120:PHE:CE1	1:A:153:LEU:HD12	2.51	0.45
1:B:1536:ARG:HA	1:B:1541:ARG:HH21	1.81	0.45
1:A:88:ARG:HD2	1:A:180:GLU:OE1	2.15	0.45
1:B:1058:ILE:HD12	1:B:1073:ALA:HB3	1.98	0.45
1:B:1054:PHE:O	1:B:1055:SER:C	2.55	0.45
1:A:339:GLY:O	1:A:343:MET:HG2	2.15	0.45
1:B:1432:PHE:O	1:B:1436:ILE:HG13	2.16	0.45
1:B:1315:LEU:HB3	1:B:1582:ALA:HA	1.98	0.45
1:B:1169:GLY:O	1:B:1171:SER:N	2.50	0.45
1:A:47:ALA:HB3	1:A:505:LEU:HD21	1.99	0.45
1:B:1270:LEU:HD12	1:B:1270:LEU:N	2.32	0.45
1:B:1031:ARG:O	1:B:1035:GLN:HG3	2.17	0.45
1:A:577:LYS:N	1:A:577:LYS:HD3	2.32	0.44
1:A:59:GLY:C	1:A:61:THR:H	2.19	0.44
1:A:411:LYS:O	1:A:415:GLU:HG3	2.17	0.44
1:A:261:ALA:C	1:A:262:ASN:HD22	2.20	0.44
1:B:1350:ARG:HD3	8:B:2101:HOH:O	2.17	0.44
1:B:1151:ARG:HH11	1:B:1416:GLU:CD	2.20	0.44
1:A:456:LEU:HD21	1:A:517:ALA:HA	1.98	0.44
1:A:164:ASP:HB3	1:A:166:ASN:HD21	1.83	0.44
1:A:350:ARG:HB2	1:A:350:ARG:NH1	2.32	0.44
1:B:1068:VAL:HA	1:B:1069:PRO:HD2	1.89	0.44
1:B:1404:LYS:CA	1:B:1404:LYS:HE3	2.46	0.44
1:B:1151:ARG:NH2	1:B:1221:GLU:OE1	2.50	0.44
1:A:416:GLU:O	1:A:419:ARG:HB3	2.18	0.44
1:B:1165:SER:C	1:B:1166:ASN:HD22	2.21	0.44
1:B:1151:ARG:HD2	1:B:1416:GLU:OE1	2.18	0.44
1:B:1016:LYS:HA	8:B:2288:HOH:O	2.17	0.44
1:A:391:THR:HG22	1:A:395:ARG:HD2	1.99	0.44
1:B:1536:ARG:HA	1:B:1541:ARG:NH2	2.32	0.44
1:A:433:SER:HA	1:A:436:ILE:CD1	2.48	0.43

Continued on next page...

Continued from previous page...

Atom-1	Atom-2	Interatomic distance (Å)	Clash overlap (Å)
1:A:278:GLN:HA	1:A:279:PRO:HD3	1.87	0.43
1:B:1361:THR:OG1	1:B:1446:MET:HG2	2.18	0.43
1:A:150:ILE:HB	1:A:225:ILE:CD1	2.49	0.43
1:B:1058:ILE:HG22	1:B:1075:GLU:HB2	2.00	0.43
1:B:1524:TRP:CD1	1:B:1559:ALA:HB2	2.53	0.43
1:A:216:ALA:HA	1:A:267:LEU:HD21	2.00	0.43
1:B:1155:LEU:HA	1:B:1156:PRO:HD3	1.77	0.43
1:B:1552:GLU:OE2	1:B:1556:ARG:NH1	2.52	0.43
1:B:1332:LEU:HD13	1:B:1344:ALA:CA	2.48	0.43
1:B:1322:ILE:HD12	1:B:1443:PHE:CE2	2.53	0.43
1:A:151:ARG:HA	1:A:154:GLN:HG2	2.00	0.43
1:A:90:VAL:HG21	1:A:106:ASN:HD22	1.82	0.43
1:A:91:ASP:HB2	1:A:92:PRO:HD3	2.00	0.43
1:B:1255:ARG:HD2	1:B:1571:GLU:HG3	2.01	0.43
1:B:1401:THR:HG23	1:B:1402:LYS:HG3	2.00	0.42
1:A:151:ARG:NH2	1:A:221:GLU:CD	2.72	0.42
1:B:1332:LEU:HD13	1:B:1344:ALA:CB	2.48	0.42
1:A:395:ARG:CB	1:A:395:ARG:HH11	2.31	0.42
1:A:345:ALA:HB1	1:A:578:LEU:HD21	2.01	0.42
1:B:1016:LYS:O	1:B:1019:VAL:HG22	2.19	0.42
1:A:575:ILE:O	1:A:579:LYS:HG3	2.19	0.42
1:B:1139:ILE:N	1:B:1139:ILE:HD12	2.34	0.42
1:A:243:ALA:HB1	1:A:250:ALA:HA	2.01	0.42
1:A:240:LYS:C	1:A:242:GLU:H	2.22	0.42
1:A:515:GLU:OE1	1:A:520:HIS:NE2	2.52	0.42
1:B:1350:ARG:NH2	1:B:1583:GLY:O	2.53	0.42
1:B:1229:ASN:C	1:B:1229:ASN:HD22	2.23	0.42
1:A:169:GLY:C	1:A:171:SER:N	2.70	0.42
1:B:1170:ALA:HA	1:B:1417:ASP:OD2	2.20	0.42
1:A:377:LEU:HB3	1:A:378:ASN:H	1.67	0.42
1:A:295:GLN:HA	1:A:296:PRO:HD3	1.94	0.42
1:B:1235:ASN:ND2	1:B:1236:GLY:N	2.65	0.42
1:A:253:TRP:CH2	1:A:257:GLN:HG2	2.54	0.42
1:A:530:LEU:CD2	1:A:540:LEU:HD12	2.49	0.42
1:B:1386:ASP:HA	1:B:1387:PRO:HD2	1.91	0.42
1:B:1090:VAL:HG21	1:B:1106:ASN:HD22	1.85	0.42
1:B:1511:GLN:HG3	1:B:1521:PRO:HG2	2.01	0.42
1:B:1362:THR:O	1:B:1384:ARG:HA	2.20	0.42
1:B:1307:GLN:HE21	1:B:1307:GLN:HB3	1.67	0.41
1:B:1058:ILE:HD12	1:B:1073:ALA:CB	2.50	0.41
1:B:1212:LEU:HD12	1:B:1212:LEU:HA	1.91	0.41

Continued on next page...

Continued from previous page...

Atom-1	Atom-2	Interatomic distance (Å)	Clash overlap (Å)
1:B:1152:LEU:HD11	8:B:2333:HOH:O	2.20	0.41
1:A:422:CYS:O	1:A:426:ILE:HG13	2.20	0.41
1:A:255:ARG:HG2	8:A:2327:HOH:O	2.21	0.41
1:B:1240:LYS:HD2	1:B:1253:TRP:CZ2	2.55	0.41
1:A:510:LEU:HA	1:A:510:LEU:HD12	1.87	0.41
1:B:1307:GLN:CG	1:B:1308:GLN:N	2.82	0.41
1:A:451:THR:O	1:A:455:LEU:CD2	2.69	0.41
1:B:1256:GLU:O	1:B:1259:ALA:HB3	2.20	0.41
1:A:366:ALA:HB3	8:A:2081:HOH:O	2.20	0.41
1:A:530:LEU:HD22	1:A:540:LEU:HD12	2.02	0.41
1:B:1350:ARG:O	1:B:1354:MET:HG2	2.21	0.41
1:B:1166:ASN:HB2	1:B:1402:LYS:HZ1	1.82	0.41
1:A:568:LEU:HD23	1:A:569:ALA:H	1.85	0.41
1:A:49:ASN:O	1:A:53:VAL:HG13	2.21	0.41
1:B:1027:ALA:HB1	1:B:1292:LEU:CD2	2.42	0.41
1:B:1552:GLU:O	1:B:1556:ARG:HB2	2.21	0.41
1:A:207:LEU:HA	1:A:207:LEU:HD23	1.93	0.41
1:A:312:ILE:HA	1:A:313:PRO:HD3	1.85	0.41
1:A:385:ILE:HG13	1:A:385:ILE:O	2.19	0.41
1:B:1319:VAL:CG1	1:B:1351:LEU:HD13	2.49	0.41
1:B:1053:VAL:CG1	1:B:1288:LEU:HD21	2.51	0.41
1:A:262:ASN:N	1:A:262:ASN:ND2	2.68	0.41
1:B:1253:TRP:O	1:B:1257:GLN:HB2	2.21	0.40
1:A:562:VAL:HG12	1:A:563:ALA:N	2.36	0.40
1:B:1495:LEU:HA	1:B:1495:LEU:HD12	1.82	0.40
1:A:7:ILE:HD13	1:A:11:LEU:HD22	2.03	0.40
1:B:1030:ILE:HD13	1:B:1285:VAL:HG13	2.04	0.40
1:A:532:ILE:HG23	1:A:566:PRO:HB3	2.03	0.40
1:B:1426:ILE:O	1:B:1430:GLN:HG3	2.21	0.40
1:B:1242:GLU:HG3	1:B:1537:SER:OG	2.22	0.40
1:B:1152:LEU:CD1	8:B:2333:HOH:O	2.69	0.40
1:B:1450:PRO:HB2	1:B:1455:LEU:HD13	2.03	0.40
1:A:543:ARG:NH2	7:A:701:TAS:AS	3.14	0.40

There are no symmetry-related clashes.

5.3 Torsion angles

5.3.1 Protein backbone

In the following table, the Percentiles column shows the percent Ramachandran outliers of the chain as a percentile score with respect to all X-ray entries followed by that with respect to entries of similar resolution.

The Analysed column shows the number of residues for which the backbone conformation was analysed, and the total number of residues.

Mol	Chain	Analysed	Favoured	Allowed	Outliers	Percentiles	
1	A	542/589 (92%)	509 (94%)	27 (5%)	6 (1%)	17	25
1	B	545/589 (92%)	514 (94%)	26 (5%)	5 (1%)	21	30
All	All	1087/1178 (92%)	1023 (94%)	53 (5%)	11 (1%)	19	28

All (11) Ramachandran outliers are listed below:

Mol	Chain	Res	Type
1	A	164	ASP
1	A	244	ALA
1	A	48	SER
1	A	170	ALA
1	B	1170	ALA
1	A	60	ASN
1	B	1378	ASN
1	B	1055	SER
1	B	1366	ALA
1	A	572	PRO
1	B	1572	PRO

5.3.2 Protein sidechains

In the following table, the Percentiles column shows the percent sidechain outliers of the chain as a percentile score with respect to all X-ray entries followed by that with respect to entries of similar resolution.

The Analysed column shows the number of residues for which the sidechain conformation was analysed, and the total number of residues.

Mol	Chain	Analysed	Rotameric	Outliers	Percentiles	
1	A	456/487 (94%)	423 (93%)	33 (7%)	18	28
1	B	458/487 (94%)	429 (94%)	29 (6%)	22	35

Continued on next page...

Continued from previous page...

Mol	Chain	Analysed	Rotameric	Outliers	Percentiles	
All	All	914/974 (94%)	852 (93%)	62 (7%)	20	31

All (62) residues with a non-rotameric sidechain are listed below:

Mol	Chain	Res	Type
1	A	4	LEU
1	A	40	LEU
1	A	49	ASN
1	A	53	VAL
1	A	68	VAL
1	A	126	LEU
1	A	134	THR
1	A	209	LYS
1	A	212	LEU
1	A	225	ILE
1	A	257	GLN
1	A	258	GLU
1	A	291	LEU
1	A	312	ILE
1	A	315	LEU
1	A	316	SER
1	A	318	LEU
1	A	350	ARG
1	A	351	LEU
1	A	404	LYS
1	A	407	ASP
1	A	414	LEU
1	A	437	ARG
1	A	457	LEU
1	A	510	LEU
1	A	520	HIS
1	A	534	ASP
1	A	536	ARG
1	A	553	SER
1	A	556	ARG
1	A	564	LEU
1	A	568	LEU
1	A	571	GLU
1	B	1004	LEU
1	B	1040	LEU
1	B	1083	GLN
1	B	1126	LEU

Continued on next page...

Continued from previous page...

Mol	Chain	Res	Type
1	B	1154	GLN
1	B	1164	ASP
1	B	1212	LEU
1	B	1229	ASN
1	B	1260	LEU
1	B	1262	ASN
1	B	1291	LEU
1	B	1307	GLN
1	B	1315	LEU
1	B	1322	ILE
1	B	1332	LEU
1	B	1351	LEU
1	B	1377	LEU
1	B	1398	VAL
1	B	1399	LEU
1	B	1404	LYS
1	B	1414	LEU
1	B	1441	LYS
1	B	1455	LEU
1	B	1483	MET
1	B	1510	LEU
1	B	1527	ASN
1	B	1536	ARG
1	B	1560	SER
1	B	1564	LEU

Some sidechains can be flipped to improve hydrogen bonding and reduce clashes. All (39) such sidechains are listed below:

Mol	Chain	Res	Type
1	A	35	GLN
1	A	49	ASN
1	A	52	GLN
1	A	56	GLN
1	A	83	GLN
1	A	106	ASN
1	A	154	GLN
1	A	166	ASN
1	A	229	ASN
1	A	235	ASN
1	A	262	ASN
1	A	325	ASN
1	A	327	HIS

Continued on next page...

Continued from previous page...

Mol	Chain	Res	Type
1	A	381	GLN
1	A	486	GLN
1	A	509	ASN
1	A	557	GLN
1	B	1035	GLN
1	B	1052	GLN
1	B	1079	GLN
1	B	1106	ASN
1	B	1108	GLN
1	B	1138	HIS
1	B	1154	GLN
1	B	1166	ASN
1	B	1185	GLN
1	B	1213	GLN
1	B	1229	ASN
1	B	1230	GLN
1	B	1235	ASN
1	B	1262	ASN
1	B	1307	GLN
1	B	1325	ASN
1	B	1327	HIS
1	B	1378	ASN
1	B	1486	GLN
1	B	1509	ASN
1	B	1527	ASN
1	B	1557	GLN

5.3.3 RNA ⓘ

There are no RNA molecules in this entry.

5.4 Non-standard residues in protein, DNA, RNA chains ⓘ

There are no non-standard protein/DNA/RNA residues in this entry.

5.5 Carbohydrates ⓘ

There are no carbohydrates in this entry.

5.6 Ligand geometry

Of 34 ligands modelled in this entry, 28 are monoatomic - leaving 6 for Mogul analysis.

In the following table, the Counts columns list the number of bonds (or angles) for which Mogul statistics could be retrieved, the number of bonds (or angles) that are observed in the model and the number of bonds (or angles) that are defined in the chemical component dictionary. The Link column lists molecule types, if any, to which the group is linked. The Z score for a bond length (or angle) is the number of standard deviations the observed value is removed from the expected value. A bond length (or angle) with $|Z| > 2$ is considered an outlier worth inspection. RMSZ is the root-mean-square of all Z scores of the bond lengths (or angles).

Mol	Type	Chain	Res	Link	Bond lengths			Bond angles		
					Counts	RMSZ	# Z > 2	Counts	RMSZ	# Z > 2
5	ADP	A	590	4	22,29,29	1.30	2 (9%)	27,45,45	5.99	15 (55%)
6	ATP	A	591	4	24,33,33	0.80	0	31,52,52	2.73	4 (12%)
7	TAS	A	701	-	0,3,3	0.00	-	0,3,3	0.00	-
5	ADP	B	1590	4	22,29,29	1.28	3 (13%)	27,45,45	4.74	17 (62%)
6	ATP	B	1591	4	24,33,33	0.83	1 (4%)	31,52,52	2.74	8 (25%)
7	TAS	B	1701	-	0,3,3	0.00	-	0,3,3	0.00	-

In the following table, the Chirals column lists the number of chiral outliers, the number of chiral centers analysed, the number of these observed in the model and the number defined in the chemical component dictionary. Similar counts are reported in the Torsion and Rings columns. '-' means no outliers of that kind were identified.

Mol	Type	Chain	Res	Link	Chirals	Torsions	Rings
5	ADP	A	590	4	-	0/12/32/32	0/3/3/3
6	ATP	A	591	4	-	0/18/38/38	0/3/3/3
7	TAS	A	701	-	-	0/0/0/0	0/0/0/0
5	ADP	B	1590	4	-	0/12/32/32	0/3/3/3
6	ATP	B	1591	4	-	0/18/38/38	0/3/3/3
7	TAS	B	1701	-	-	0/0/0/0	0/0/0/0

All (6) bond length outliers are listed below:

Mol	Chain	Res	Type	Atoms	Z	Observed(Å)	Ideal(Å)
5	A	590	ADP	C8-N7	-3.64	1.27	1.34
5	B	1590	ADP	C8-N7	-3.46	1.28	1.34
5	B	1590	ADP	C2'-C3'	2.04	1.58	1.53
5	B	1590	ADP	O4'-C1'	2.08	1.43	1.41
6	B	1591	ATP	C2-N3	2.10	1.35	1.32
5	A	590	ADP	C2'-C3'	2.17	1.59	1.53

All (44) bond angle outliers are listed below:

Mol	Chain	Res	Type	Atoms	Z	Observed(°)	Ideal(°)
6	A	591	ATP	N3-C2-N1	-12.65	119.21	128.89
5	A	590	ADP	N3-C2-N1	-12.15	119.59	128.89
5	B	1590	ADP	N3-C2-N1	-12.09	119.63	128.89
6	B	1591	ATP	N3-C2-N1	-11.66	119.96	128.89
5	A	590	ADP	O4'-C4'-C3'	-7.58	89.88	105.15
5	B	1590	ADP	O4'-C4'-C3'	-5.66	93.75	105.15
5	B	1590	ADP	C1'-N9-C4	-5.50	118.65	126.94
5	A	590	ADP	C1'-N9-C4	-5.07	119.30	126.94
5	A	590	ADP	O4'-C1'-N9	-4.91	97.81	108.10
5	B	1590	ADP	O4'-C1'-N9	-4.46	98.76	108.10
5	B	1590	ADP	O4'-C4'-C5'	-3.68	96.17	109.32
5	A	590	ADP	O5'-PA-O1A	-3.58	95.72	109.62
5	A	590	ADP	O4'-C4'-C5'	-3.57	96.55	109.32
5	A	590	ADP	O5'-C5'-C4'	-3.42	96.50	109.12
5	B	1590	ADP	O5'-C5'-C4'	-3.15	97.52	109.12
6	A	591	ATP	O3A-PA-O5'	-3.10	94.70	102.94
5	B	1590	ADP	O5'-PA-O1A	-2.82	98.68	109.62
6	B	1591	ATP	O4'-C1'-N9	-2.81	102.22	108.10
6	B	1591	ATP	N6-C6-N1	-2.78	113.23	119.20
5	B	1590	ADP	O2A-PA-O3A	-2.74	92.67	105.09
6	A	591	ATP	N6-C6-N1	-2.43	113.98	119.20
5	B	1590	ADP	O2A-PA-O5'	2.00	118.57	108.46
6	B	1591	ATP	O5'-C5'-C4'	2.02	116.56	109.12
5	A	590	ADP	C2-N1-C6	2.04	122.41	118.77
5	B	1590	ADP	O2A-PA-O1A	2.10	123.91	112.53
5	B	1590	ADP	C2-N1-C6	2.27	122.83	118.77
6	B	1591	ATP	PB-O3B-PG	2.37	140.61	132.67
5	A	590	ADP	C2'-C3'-C4'	2.40	107.55	102.61
5	B	1590	ADP	C2'-C1'-N9	2.44	118.02	114.29
6	B	1591	ATP	C2'-C1'-N9	2.61	118.28	114.29
6	B	1591	ATP	O2A-PA-O5'	2.65	121.80	108.46
5	B	1590	ADP	C2'-C3'-C4'	3.24	109.26	102.61
5	A	590	ADP	C2'-C1'-N9	3.44	119.55	114.29
5	A	590	ADP	O3A-PA-O5'	3.51	112.24	102.94
5	B	1590	ADP	PA-O3A-PB	3.52	144.47	132.67
6	A	591	ATP	O2'-C2'-C3'	4.45	126.30	111.83
6	B	1591	ATP	C4'-O4'-C1'	4.57	114.75	109.72
5	B	1590	ADP	C5'-C4'-C3'	4.87	134.54	115.21
5	B	1590	ADP	O3A-PA-O5'	5.25	116.86	102.94
5	A	590	ADP	C5'-C4'-C3'	5.63	137.54	115.21
5	A	590	ADP	O2A-PA-O5'	5.72	137.33	108.46
5	A	590	ADP	PA-O3A-PB	11.71	171.92	132.67

Continued on next page...

Continued from previous page...

Mol	Chain	Res	Type	Atoms	Z	Observed($^{\circ}$)	Ideal($^{\circ}$)
5	B	1590	ADP	C4'-O4'-C1'	15.28	126.51	109.72
5	A	590	ADP	C4'-O4'-C1'	20.61	132.36	109.72

There are no chirality outliers.

There are no torsion outliers.

There are no ring outliers.

4 monomers are involved in 6 short contacts:

Mol	Chain	Res	Type	Clashes	Symm-Clashes
5	A	590	ADP	2	0
7	A	701	TAS	1	0
5	B	1590	ADP	2	0
6	B	1591	ATP	1	0

5.7 Other polymers [i](#)

There are no such residues in this entry.

5.8 Polymer linkage issues [i](#)

There are no chain breaks in this entry.

6 Fit of model and data

6.1 Protein, DNA and RNA chains

In the following table, the column labelled ‘#RSRZ> 2’ contains the number (and percentage) of RSRZ outliers, followed by percent RSRZ outliers for the chain as percentile scores relative to all X-ray entries and entries of similar resolution. The OWAB column contains the minimum, median, 95th percentile and maximum values of the occupancy-weighted average B-factor per residue. The column labelled ‘Q< 0.9’ lists the number of (and percentage) of residues with an average occupancy less than 0.9.

Mol	Chain	Analysed	<RSRZ>	#RSRZ>2	OWAB(Å ²)	Q<0.9
1	A	550/589 (93%)	0.09	23 (4%) 40 41	20, 36, 66, 81	0
1	B	553/589 (93%)	0.19	30 (5%) 29 30	21, 38, 67, 95	0
All	All	1103/1178 (93%)	0.14	53 (4%) 34 35	20, 38, 66, 95	0

All (53) RSRZ outliers are listed below:

Mol	Chain	Res	Type	RSRZ
1	B	1169	GLY	12.3
1	A	169	GLY	8.6
1	B	1170	ALA	7.0
1	B	1307	GLN	5.6
1	B	1308	GLN	5.6
1	B	1377	LEU	5.5
1	B	1245	ASN	5.3
1	A	480	THR	5.2
1	B	1295	GLN	5.0
1	B	1162	PHE	4.4
1	B	1570	SER	4.4
1	B	1167	PRO	4.2
1	B	1161	SER	4.1
1	A	170	ALA	4.1
1	A	245	ASN	3.8
1	B	1163	ILE	3.7
1	A	295	GLN	3.5
1	B	1066	ALA	3.5
1	A	479	THR	3.5
1	B	1046	PRO	3.5
1	A	167	PRO	3.2
1	A	437	ARG	3.1
1	B	1055	SER	3.0
1	A	536	ARG	2.9

Continued on next page...

Continued from previous page...

Mol	Chain	Res	Type	RSRZ
1	B	1479	THR	2.9
1	B	1480	THR	2.9
1	B	1366	ALA	2.8
1	B	1166	ASN	2.7
1	B	1536	ARG	2.6
1	A	55	SER	2.5
1	A	556	ARG	2.5
1	A	309	ARG	2.5
1	A	265	ALA	2.4
1	B	1165	SER	2.4
1	B	1461	THR	2.3
1	B	1168	GLU	2.3
1	B	1079	GLN	2.3
1	A	405	GLU	2.3
1	A	441	LYS	2.3
1	B	1180	GLU	2.2
1	A	569	ALA	2.2
1	A	310	PRO	2.2
1	A	66	ALA	2.2
1	B	1401	THR	2.2
1	A	571	GLU	2.2
1	B	1541	ARG	2.1
1	A	241	THR	2.1
1	A	535	THR	2.1
1	B	1172	CYS	2.1
1	B	1068	VAL	2.0
1	A	67	SER	2.0
1	B	1571	GLU	2.0
1	A	434	ARG	2.0

6.2 Non-standard residues in protein, DNA, RNA chains ⓘ

There are no non-standard protein/DNA/RNA residues in this entry.

6.3 Carbohydrates ⓘ

There are no carbohydrates in this entry.

6.4 Ligands ⓘ

In the following table, the Atoms column lists the number of modelled atoms in the group and the number defined in the chemical component dictionary. LLDF column lists the quality of electron density of the group with respect to its neighbouring residues in protein, DNA or RNA chains. The B-factors column lists the minimum, median, 95th percentile and maximum values of B factors of atoms in the group. The column labelled 'Q< 0.9' lists the number of atoms with occupancy less than 0.9.

Mol	Type	Chain	Res	Atoms	RSCC	RSR	LLDF	B-factors(Å ²)	Q<0.9
7	TAS	A	701	4/4	0.48	0.61	36.26	79,79,79,80	4
3	CL	B	1599	1/1	0.58	0.61	28.87	63,63,63,63	1
7	TAS	B	1701	4/4	0.82	0.43	15.71	63,63,63,65	4
5	ADP	B	1590	27/27	0.97	0.15	-0.03	32,37,39,39	0
5	ADP	A	590	27/27	0.97	0.14	-0.52	26,36,38,39	0
2	CD	A	596	1/1	1.00	0.09	-0.89	29,29,29,29	0
2	CD	B	1596	1/1	1.00	0.09	-0.98	30,30,30,30	0
6	ATP	B	1591	31/31	0.97	0.12	-1.05	27,35,38,39	0
2	CD	A	595	1/1	1.00	0.09	-1.14	27,27,27,27	0
2	CD	B	1595	1/1	1.00	0.09	-1.15	24,24,24,24	0
6	ATP	A	591	31/31	0.98	0.11	-1.18	29,35,39,39	0
3	CL	A	598	1/1	0.99	0.08	-1.30	30,30,30,30	0
3	CL	B	1597	1/1	0.98	0.07	-1.31	31,31,31,31	0
3	CL	B	1598	1/1	1.00	0.06	-1.65	24,24,24,24	0
3	CL	A	597	1/1	0.99	0.04	-2.02	26,26,26,26	0
3	CL	A	4000	1/1	1.00	0.05	-9.49	22,22,22,22	0
4	MG	B	1592	1/1	0.98	0.07	-	16,16,16,16	0
2	CD	A	603	1/1	0.97	0.04	-	91,91,91,91	0
2	CD	B	1601	1/1	1.00	0.09	-	26,26,26,26	0
2	CD	A	604	1/1	0.99	0.06	-	42,42,42,42	0
2	CD	A	602	1/1	1.00	0.09	-	31,31,31,31	0
2	CD	B	1602	1/1	1.00	0.09	-	29,29,29,29	0
2	CD	B	1594	1/1	0.99	0.08	-	28,28,28,28	0
2	CD	B	1608	1/1	0.60	0.15	-	90,90,90,90	1
2	CD	B	1603	1/1	0.95	0.06	-	75,75,75,75	0
3	CL	B	4001	1/1	0.82	0.39	-	50,50,50,50	1
2	CD	A	605	1/1	0.98	0.06	-	45,45,45,45	1
2	CD	A	601	1/1	1.00	0.08	-	22,22,22,22	0
2	CD	B	1607	1/1	0.99	0.05	-	33,33,33,33	1
4	MG	A	593	1/1	0.98	0.09	-	29,29,29,29	0
4	MG	B	1593	1/1	0.98	0.08	-	23,23,23,23	0
2	CD	A	600	1/1	1.00	0.08	-	22,22,22,22	0
2	CD	A	594	1/1	0.99	0.08	-	32,32,32,32	0
4	MG	A	592	1/1	0.97	0.15	-	17,17,17,17	0

6.5 Other polymers

There are no such residues in this entry.