



wwPDB X-ray Structure Validation Summary Report ⓘ

Feb 7, 2017 – 07:10 PM EST

PDB ID : 5INU
Title : Saccharomyces cerevisiae acetohydroxyacid synthase
Authors : Guddat, L.W.; Lonhienne, T.
Deposited on : 2016-03-07
Resolution : 1.98 Å(reported)

This is a wwPDB X-ray Structure Validation Summary Report for a publicly released PDB entry.

We welcome your comments at validation@mail.wwpdb.org

A user guide is available at

<http://wwpdb.org/validation/2016/XrayValidationReportHelp>

with specific help available everywhere you see the ⓘ symbol.

The following versions of software and data (see [references ⓘ](#)) were used in the production of this report:

MolProbity	:	4.02b-467
Mogul	:	1.7.1 (RC1), CSD as537be (2016)
Xtriage (Phenix)	:	1.9-1692
EDS	:	rb-20028442
Percentile statistics	:	20151230.v01 (using entries in the PDB archive December 30th 2015)
Refmac	:	5.8.0135
CCP4	:	6.5.0
Ideal geometry (proteins)	:	Engh & Huber (2001)
Ideal geometry (DNA, RNA)	:	Parkinson et al. (1996)
Validation Pipeline (wwPDB-VP)	:	rb-20028442

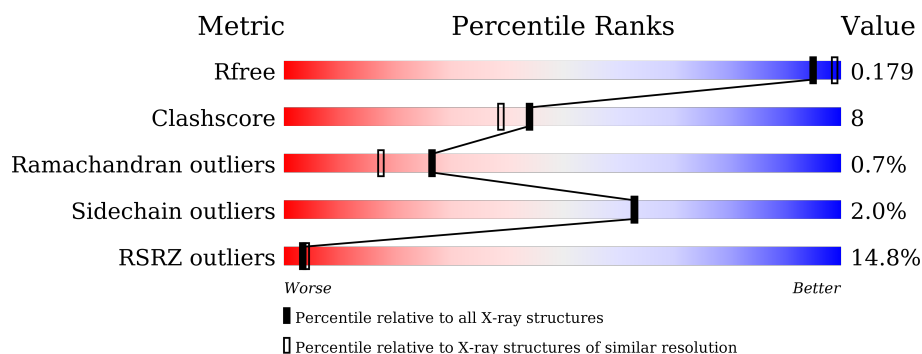
1 Overall quality at a glance ⓘ

The following experimental techniques were used to determine the structure:

X-RAY DIFFRACTION

The reported resolution of this entry is 1.98 Å.

Percentile scores (ranging between 0-100) for global validation metrics of the entry are shown in the following graphic. The table shows the number of entries on which the scores are based.



Metric	Whole archive (#Entries)	Similar resolution (#Entries, resolution range(Å))
R_{free}	91344	8664 (2.00-1.96)
Clashscore	102246	9905 (2.00-1.96)
Ramachandran outliers	100387	9792 (2.00-1.96)
Sidechain outliers	100360	9791 (2.00-1.96)
RSRZ outliers	91569	8679 (2.00-1.96)

The table below summarises the geometric issues observed across the polymeric chains and their fit to the electron density. The red, orange, yellow and green segments on the lower bar indicate the fraction of residues that contain outliers for ≥ 3 , 2, 1 and 0 types of geometric quality criteria. A grey segment represents the fraction of residues that are not modelled. The numeric value for each fraction is indicated below the corresponding segment, with a dot representing fractions $\leq 5\%$. The upper red bar (where present) indicates the fraction of residues that have poor fit to the electron density. The numeric value is given above the bar.

Mol	Chain	Length	Quality of chain
1	A	677	<div> <div>6%</div> <div>74%</div> <div>6%</div> <div>19%</div> </div>
1	B	677	<div> <div>18%</div> <div>69%</div> <div>12%</div> <div>17%</div> </div>

The following table lists non-polymeric compounds, carbohydrate monomers and non-standard residues in protein, DNA, RNA chains that are outliers for geometric or electron-density-fit criteria:

Mol	Type	Chain	Res	Chirality	Geometry	Clashes	Electron density
6	PYR	A	705	-	-	X	X
6	PYR	A	706	-	-	-	X
6	PYR	B	705	-	-	X	X
6	PYR	B	706	-	-	-	X
7	OXY	A	707	-	-	-	X
7	OXY	A	708	-	-	-	X
7	OXY	B	707	-	-	X	-
7	OXY	B	711	-	-	-	X

2 Entry composition [i](#)

There are 9 unique types of molecules in this entry. The entry contains 9452 atoms, of which 0 are hydrogens and 0 are deuteriums.

In the tables below, the ZeroOcc column contains the number of atoms modelled with zero occupancy, the AltConf column contains the number of residues with at least one atom in alternate conformation and the Trace column contains the number of residues modelled with at most 2 atoms.

- Molecule 1 is a protein called Acetolactate synthase catalytic subunit, mitochondrial.

Mol	Chain	Residues	Atoms					ZeroOcc	AltConf	Trace
1	A	545	Total	C	N	O	S	0	3	0
			4146	2620	716	791	19			
1	B	564	Total	C	N	O	S	0	0	0
			4294	2718	741	815	20			

There are 94 discrepancies between the modelled and reference sequences:

Chain	Residue	Modelled	Actual	Comment	Reference
A	11	MET	-	expression tag	UNP P07342
A	12	HIS	-	expression tag	UNP P07342
A	13	HIS	-	expression tag	UNP P07342
A	14	HIS	-	expression tag	UNP P07342
A	15	HIS	-	expression tag	UNP P07342
A	16	HIS	-	expression tag	UNP P07342
A	17	HIS	-	expression tag	UNP P07342
A	18	SER	-	expression tag	UNP P07342
A	19	SER	-	expression tag	UNP P07342
A	20	GLY	-	expression tag	UNP P07342
A	21	LEU	-	expression tag	UNP P07342
A	22	VAL	-	expression tag	UNP P07342
A	23	PRO	-	expression tag	UNP P07342
A	24	ARG	-	expression tag	UNP P07342
A	25	GLY	-	expression tag	UNP P07342
A	26	SER	-	expression tag	UNP P07342
A	27	GLY	-	expression tag	UNP P07342
A	28	MET	-	expression tag	UNP P07342
A	29	LYS	-	expression tag	UNP P07342
A	30	GLU	-	expression tag	UNP P07342
A	31	THR	-	expression tag	UNP P07342
A	32	ALA	-	expression tag	UNP P07342
A	33	ALA	-	expression tag	UNP P07342
A	34	ALA	-	expression tag	UNP P07342
A	35	LYS	-	expression tag	UNP P07342

Continued on next page...

Continued from previous page...

Chain	Residue	Modelled	Actual	Comment	Reference
A	36	PHE	-	expression tag	UNP P07342
A	37	GLU	-	expression tag	UNP P07342
A	38	ARG	-	expression tag	UNP P07342
A	39	GLN	-	expression tag	UNP P07342
A	40	HIS	-	expression tag	UNP P07342
A	41	MET	-	expression tag	UNP P07342
A	42	ASP	-	expression tag	UNP P07342
A	43	SER	-	expression tag	UNP P07342
A	44	PRO	-	expression tag	UNP P07342
A	45	ASP	-	expression tag	UNP P07342
A	46	LEU	-	expression tag	UNP P07342
A	47	GLY	-	expression tag	UNP P07342
A	48	THR	-	expression tag	UNP P07342
A	49	ASP	-	expression tag	UNP P07342
A	50	ASP	-	expression tag	UNP P07342
A	51	ASP	-	expression tag	UNP P07342
A	52	ASP	-	expression tag	UNP P07342
A	53	LYS	-	expression tag	UNP P07342
A	54	ALA	-	expression tag	UNP P07342
A	55	MET	-	expression tag	UNP P07342
A	56	GLY	-	expression tag	UNP P07342
A	57	SER	-	expression tag	UNP P07342
B	11	MET	-	expression tag	UNP P07342
B	12	HIS	-	expression tag	UNP P07342
B	13	HIS	-	expression tag	UNP P07342
B	14	HIS	-	expression tag	UNP P07342
B	15	HIS	-	expression tag	UNP P07342
B	16	HIS	-	expression tag	UNP P07342
B	17	HIS	-	expression tag	UNP P07342
B	18	SER	-	expression tag	UNP P07342
B	19	SER	-	expression tag	UNP P07342
B	20	GLY	-	expression tag	UNP P07342
B	21	LEU	-	expression tag	UNP P07342
B	22	VAL	-	expression tag	UNP P07342
B	23	PRO	-	expression tag	UNP P07342
B	24	ARG	-	expression tag	UNP P07342
B	25	GLY	-	expression tag	UNP P07342
B	26	SER	-	expression tag	UNP P07342
B	27	GLY	-	expression tag	UNP P07342
B	28	MET	-	expression tag	UNP P07342
B	29	LYS	-	expression tag	UNP P07342
B	30	GLU	-	expression tag	UNP P07342

Continued on next page...

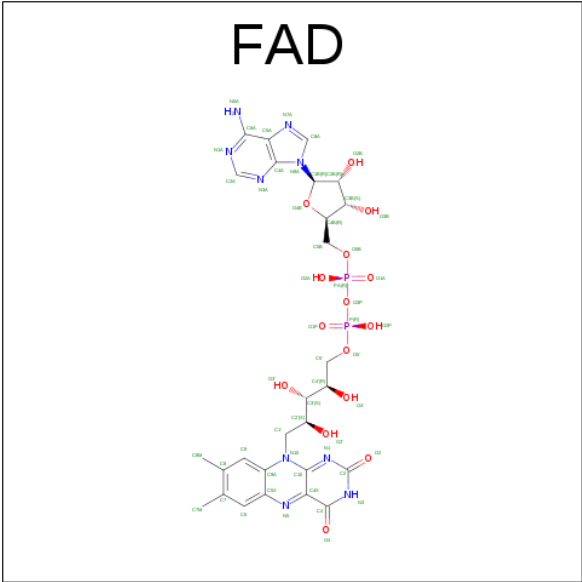
Continued from previous page...

Chain	Residue	Modelled	Actual	Comment	Reference
B	31	THR	-	expression tag	UNP P07342
B	32	ALA	-	expression tag	UNP P07342
B	33	ALA	-	expression tag	UNP P07342
B	34	ALA	-	expression tag	UNP P07342
B	35	LYS	-	expression tag	UNP P07342
B	36	PHE	-	expression tag	UNP P07342
B	37	GLU	-	expression tag	UNP P07342
B	38	ARG	-	expression tag	UNP P07342
B	39	GLN	-	expression tag	UNP P07342
B	40	HIS	-	expression tag	UNP P07342
B	41	MET	-	expression tag	UNP P07342
B	42	ASP	-	expression tag	UNP P07342
B	43	SER	-	expression tag	UNP P07342
B	44	PRO	-	expression tag	UNP P07342
B	45	ASP	-	expression tag	UNP P07342
B	46	LEU	-	expression tag	UNP P07342
B	47	GLY	-	expression tag	UNP P07342
B	48	THR	-	expression tag	UNP P07342
B	49	ASP	-	expression tag	UNP P07342
B	50	ASP	-	expression tag	UNP P07342
B	51	ASP	-	expression tag	UNP P07342
B	52	ASP	-	expression tag	UNP P07342
B	53	LYS	-	expression tag	UNP P07342
B	54	ALA	-	expression tag	UNP P07342
B	55	MET	-	expression tag	UNP P07342
B	56	GLY	-	expression tag	UNP P07342
B	57	SER	-	expression tag	UNP P07342

- Molecule 2 is POTASSIUM ION (three-letter code: K) (formula: K).

Mol	Chain	Residues	Atoms	ZeroOcc	AltConf
2	B	1	Total K 1 1	0	0
2	A	1	Total K 1 1	0	0

- Molecule 3 is FLAVIN-ADENINE DINUCLEOTIDE (three-letter code: FAD) (formula: C₂₇H₃₃N₉O₁₅P₂).

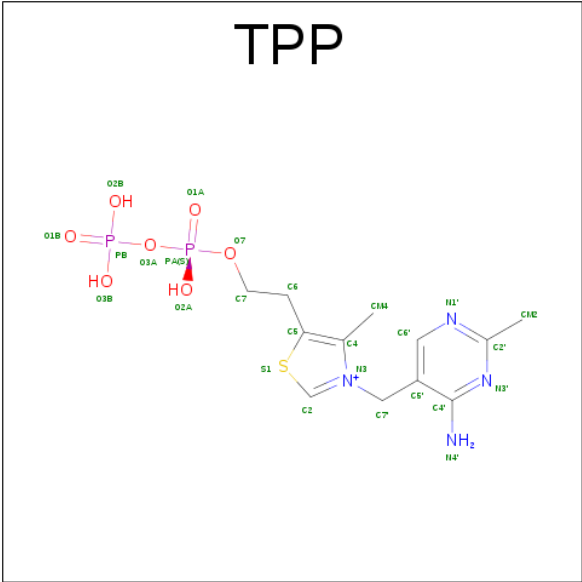


Mol	Chain	Residues	Atoms					ZeroOcc	AltConf
3	A	1	Total	C	N	O	P	0	0
			53	27	9	15	2		
3	B	1	Total	C	N	O	P	0	0
			53	27	9	15	2		

- Molecule 4 is MAGNESIUM ION (three-letter code: MG) (formula: Mg).

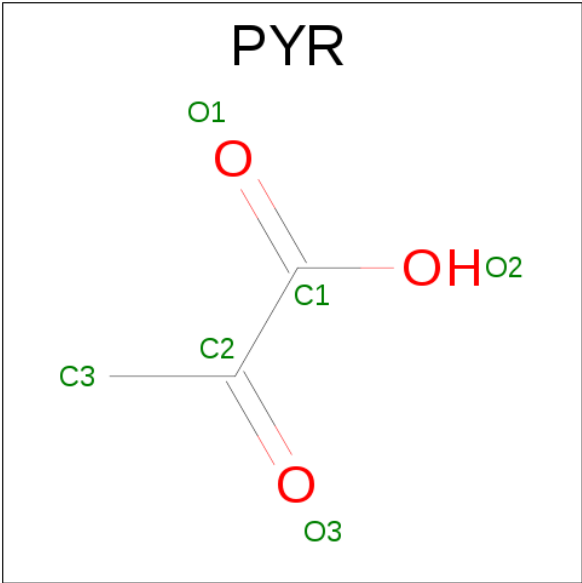
Mol	Chain	Residues	Atoms		ZeroOcc	AltConf
4	B	1	Total	Mg	0	0
			1	1		
4	A	1	Total	Mg	0	0
			1	1		

- Molecule 5 is THIAMINE DIPHOSPHATE (three-letter code: TPP) (formula: C₁₂H₁₉N₄O₇P₂S).



Mol	Chain	Residues	Atoms					ZeroOcc	AltConf	
5	A	1	Total	C	N	O	P	S	0	0
			26	12	4	7	2	1		
5	B	1	Total	C	N	O	P	S	0	0
			26	12	4	7	2	1		

- Molecule 6 is PYRUVIC ACID (three-letter code: PYR) (formula: C₃H₄O₃).



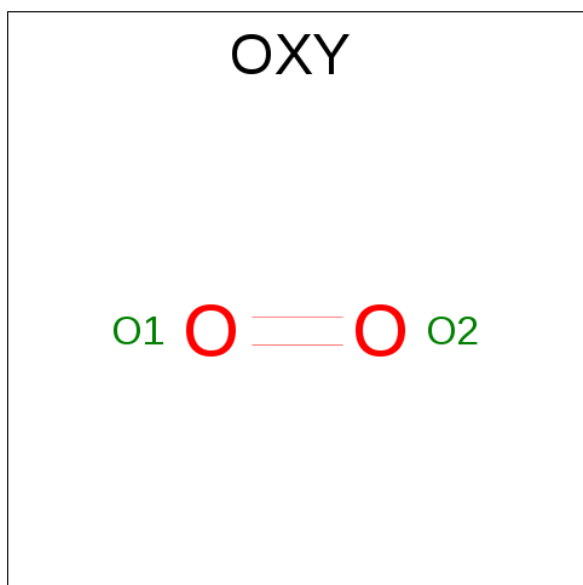
Mol	Chain	Residues	Atoms			ZeroOcc	AltConf
6	A	1	Total	C	O	0	0
			6	3	3		
6	A	1	Total	C	O	0	0
			6	3	3		

Continued on next page...

Continued from previous page...

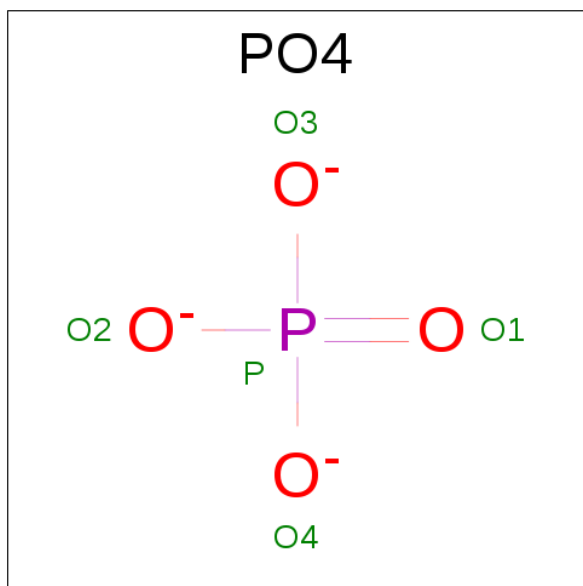
Mol	Chain	Residues	Atoms			ZeroOcc	AltConf
6	B	1	Total	C	O	0	0
			6	3	3		
6	B	1	Total	C	O	0	0
			6	3	3		

- Molecule 7 is OXYGEN MOLECULE (three-letter code: OXY) (formula: O₂).



Mol	Chain	Residues	Atoms		ZeroOcc	AltConf
7	A	1	Total	O	0	0
			2	2		
7	A	1	Total	O	0	0
			2	2		
7	B	1	Total	O	0	0
			2	2		
7	B	1	Total	O	0	0
			2	2		
7	B	1	Total	O	0	0
			2	2		
7	B	1	Total	O	0	0
			2	2		
7	B	1	Total	O	0	0
			2	2		
7	B	1	Total	O	0	0
			2	2		

- Molecule 8 is PHOSPHATE ION (three-letter code: PO4) (formula: O₄P).



Mol	Chain	Residues	Atoms			ZeroOcc	AltConf
8	B	1	Total	O	P	0	0
			5	4	1		

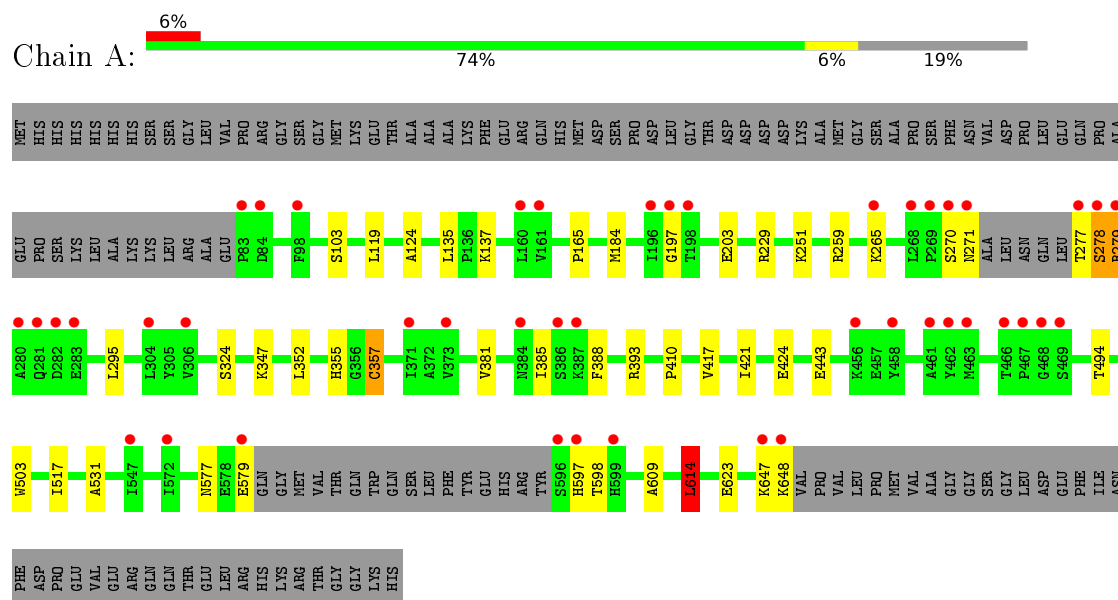
- Molecule 9 is water.

Mol	Chain	Residues	Atoms		ZeroOcc	AltConf
9	A	475	Total	O	0	0
			475	475		
9	B	328	Total	O	0	0
			328	328		

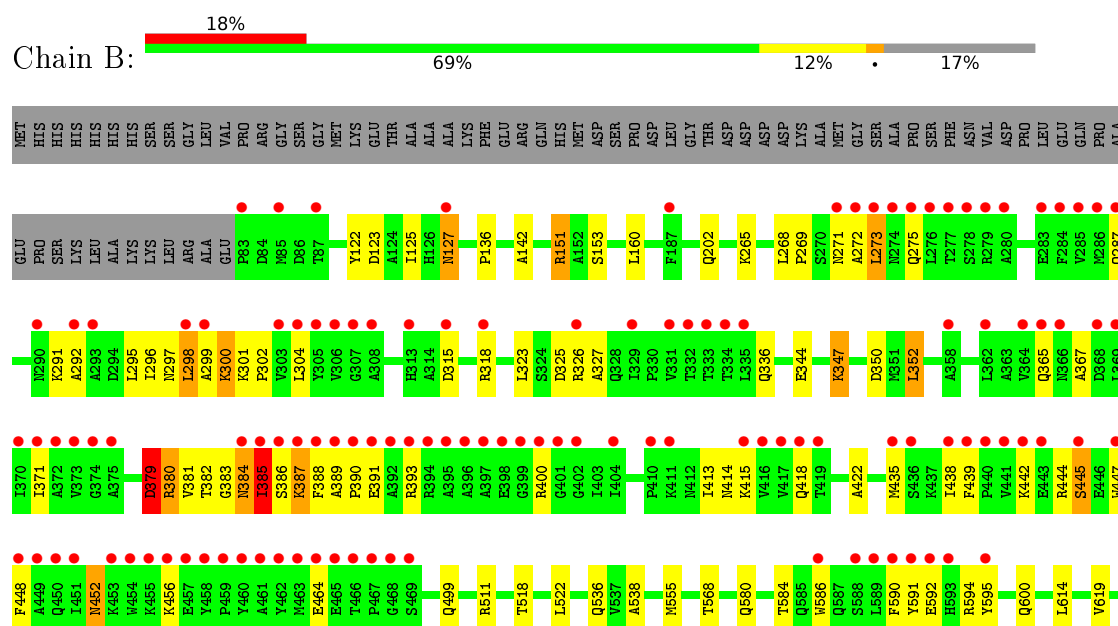
3 Residue-property plots

These plots are drawn for all protein, RNA and DNA chains in the entry. The first graphic for a chain summarises the proportions of errors displayed in the second graphic. The second graphic shows the sequence view annotated by issues in geometry and electron density. Residues are color-coded according to the number of geometric quality criteria for which they contain at least one outlier: green = 0, yellow = 1, orange = 2 and red = 3 or more. A red dot above a residue indicates a poor fit to the electron density ($RSRZ > 2$). Stretches of 2 or more consecutive residues without any outlier are shown as a green connector. Residues present in the sample, but not in the model, are shown in grey.

- Molecule 1: Acetolactate synthase catalytic subunit, mitochondrial



- Molecule 1: Acetolactate synthase catalytic subunit, mitochondrial



K628	D646
LYS	LYS
VAL	VAL
PRO	PRO
VAL	VAL
LEU	LEU
PRO	PRO
MET	MET
VAL	VAL
ALA	ALA
GLY	GLY
GLY	SER
GLY	GLY
LEU	LEU
ASP	ASP
GLU	GLU
PHE	PHE
ILE	ILE
ASN	ASN
PHE	PHE
ASP	ASP
PRO	PRO
GLU	GLU
VAL	VAL
GLU	GLU
ARG	ARG
GLN	GLN
GLN	GLN
THR	THR
GLU	GLU
LEU	LEU
ARG	ARG
HIS	HIS
LYS	LYS
ARG	ARG
THR	THR
GLY	GLY
GLY	GLY
LYS	LYS
HIS	HIS

4 Data and refinement statistics

Property	Value	Source
Space group	P 21 21 21	Depositor
Cell constants a, b, c, α , β , γ	96.02Å 110.97Å 180.24Å 90.00° 90.00° 90.00°	Depositor
Resolution (Å)	29.93 – 1.98 29.93 – 1.98	Depositor EDS
% Data completeness (in resolution range)	95.2 (29.93-1.98) 95.2 (29.93-1.98)	Depositor EDS
R_{merge}	0.10	Depositor
R_{sym}	(Not available)	Depositor
$\langle I/\sigma(I) \rangle$ ¹	2.59 (at 1.98Å)	Xtriage
Refinement program	PHENIX (phenix.refine: 1.9_1692)	Depositor
R, R_{free}	0.154 , 0.177 0.157 , 0.179	Depositor DCC
R_{free} test set	2001 reflections (1.57%)	DCC
Wilson B-factor (Å ²)	28.0	Xtriage
Anisotropy	0.203	Xtriage
Bulk solvent k_{sol} (e/Å ³), B_{sol} (Å ²)	0.36 , 67.4	EDS
L-test for twinning ²	$\langle L \rangle = 0.51$, $\langle L^2 \rangle = 0.35$	Xtriage
Estimated twinning fraction	No twinning to report.	Xtriage
F_o, F_c correlation	0.97	EDS
Total number of atoms	9452	wwPDB-VP
Average B, all atoms (Å ²)	46.0	wwPDB-VP

Xtriage's analysis on translational NCS is as follows: *The largest off-origin peak in the Patterson function is 3.42% of the height of the origin peak. No significant pseudotranslation is detected.*

¹Intensities estimated from amplitudes.

²Theoretical values of $\langle |L| \rangle$, $\langle L^2 \rangle$ for acentric reflections are 0.5, 0.333 respectively for untwinned datasets, and 0.375, 0.2 for perfectly twinned datasets.

5 Model quality [i](#)

5.1 Standard geometry [i](#)

Bond lengths and bond angles in the following residue types are not validated in this section: MG, PYR, PO4, TPP, K, FAD, OXY

The Z score for a bond length (or angle) is the number of standard deviations the observed value is removed from the expected value. A bond length (or angle) with $|Z| > 5$ is considered an outlier worth inspection. RMSZ is the root-mean-square of all Z scores of the bond lengths (or angles).

Mol	Chain	Bond lengths		Bond angles	
		RMSZ	$\# Z > 5$	RMSZ	$\# Z > 5$
1	A	0.85	2/4227 (0.0%)	0.81	4/5732 (0.1%)
1	B	0.81	1/4383 (0.0%)	0.80	2/5950 (0.0%)
All	All	0.83	3/8610 (0.0%)	0.80	6/11682 (0.1%)

All (3) bond length outliers are listed below:

Mol	Chain	Res	Type	Atoms	Z	Observed(Å)	Ideal(Å)
1	B	122	TYR	CD2-CE2	5.13	1.47	1.39
1	A	531	ALA	CA-CB	5.09	1.63	1.52
1	A	443	GLU	CG-CD	5.05	1.59	1.51

The worst 5 of 6 bond angle outliers are listed below:

Mol	Chain	Res	Type	Atoms	Z	Observed(°)	Ideal(°)
1	A	614	LEU	CA-CB-CG	10.24	138.84	115.30
1	B	151	ARG	NE-CZ-NH2	-6.93	116.83	120.30
1	A	184	MET	CG-SD-CE	-6.09	90.45	100.20
1	A	229	ARG	NE-CZ-NH2	-5.52	117.54	120.30
1	A	259	ARG	NE-CZ-NH1	-5.46	117.57	120.30

There are no chirality outliers.

There are no planarity outliers.

5.2 Too-close contacts [i](#)

In the following table, the Non-H and H(model) columns list the number of non-hydrogen atoms and hydrogen atoms in the chain respectively. The H(added) column lists the number of hydrogen atoms added and optimized by MolProbity. The Clashes column lists the number of clashes within the asymmetric unit, whereas Symm-Clashes lists symmetry related clashes.

Mol	Chain	Non-H	H(model)	H(added)	Clashes	Symm-Clashes
1	A	4146	0	4171	35	0
1	B	4294	0	4307	90	0
2	A	1	0	0	0	0
2	B	1	0	0	0	0
3	A	53	0	30	2	0
3	B	53	0	30	2	0
4	A	1	0	0	0	0
4	B	1	0	0	0	0
5	A	26	0	16	2	0
5	B	26	0	16	7	0
6	A	12	0	6	7	0
6	B	12	0	6	6	0
7	A	4	0	0	0	0
7	B	14	0	0	4	0
8	B	5	0	0	0	0
9	A	475	0	0	7	3
9	B	328	0	0	8	3
All	All	9452	0	8582	138	3

The all-atom clashscore is defined as the number of clashes found per 1000 atoms (including hydrogen atoms). The all-atom clashscore for this structure is 8.

The worst 5 of 138 close contacts within the same asymmetric unit are listed below, sorted by their clash magnitude.

Atom-1	Atom-2	Interatomic distance (Å)	Clash overlap (Å)
1:B:388:PHE:O	1:B:393:ARG:NH1	1.66	1.27
1:B:387:LYS:O	1:B:393:ARG:NH2	1.79	1.16
1:B:383:GLY:HA3	1:B:384:ASN:HB2	1.19	1.15
1:A:251:LYS:NZ	9:A:801:HOH:O	1.96	0.97
6:B:705:PYR:H33	6:B:706:PYR:O1	1.69	0.93

All (3) symmetry-related close contacts are listed below. The label for Atom-2 includes the symmetry operator and encoded unit-cell translations to be applied.

Atom-1	Atom-2	Interatomic distance (Å)	Clash overlap (Å)
9:A:1094:HOH:O	9:B:868:HOH:O[4_575]	1.98	0.22
9:A:1179:HOH:O	9:B:1022:HOH:O[3_945]	2.03	0.17
9:A:809:HOH:O	9:B:1092:HOH:O[4_575]	2.18	0.02

5.3 Torsion angles

5.3.1 Protein backbone

In the following table, the Percentiles column shows the percent Ramachandran outliers of the chain as a percentile score with respect to all X-ray entries followed by that with respect to entries of similar resolution.

The Analysed column shows the number of residues for which the backbone conformation was analysed, and the total number of residues.

Mol	Chain	Analysed	Favoured	Allowed	Outliers	Percentiles	
1	A	542/677 (80%)	534 (98%)	7 (1%)	1 (0%)	52	47
1	B	562/677 (83%)	535 (95%)	20 (4%)	7 (1%)	16	7
All	All	1104/1354 (82%)	1069 (97%)	27 (2%)	8 (1%)	26	17

5 of 8 Ramachandran outliers are listed below:

Mol	Chain	Res	Type
1	A	278	SER
1	B	299	ALA
1	B	380	ARG
1	B	385	ILE
1	B	591	TYR

5.3.2 Protein sidechains

In the following table, the Percentiles column shows the percent sidechain outliers of the chain as a percentile score with respect to all X-ray entries followed by that with respect to entries of similar resolution.

The Analysed column shows the number of residues for which the sidechain conformation was analysed, and the total number of residues.

Mol	Chain	Analysed	Rotameric	Outliers	Percentiles	
1	A	448/556 (81%)	443 (99%)	5 (1%)	80	82
1	B	462/556 (83%)	449 (97%)	13 (3%)	51	48
All	All	910/1112 (82%)	892 (98%)	18 (2%)	63	63

5 of 18 residues with a non-rotameric sidechain are listed below:

Mol	Chain	Res	Type
1	B	300	LYS

Continued on next page...

Continued from previous page...

Mol	Chain	Res	Type
1	B	347	LYS
1	B	387	LYS
1	B	271	ASN
1	B	273	LEU

Some sidechains can be flipped to improve hydrogen bonding and reduce clashes. All (4) such sidechains are listed below:

Mol	Chain	Res	Type
1	B	384	ASN
1	B	499	GLN
1	B	580	GLN
1	B	600	GLN

5.3.3 RNA [i](#)

There are no RNA molecules in this entry.

5.4 Non-standard residues in protein, DNA, RNA chains [i](#)

There are no non-standard protein/DNA/RNA residues in this entry.

5.5 Carbohydrates [i](#)

There are no carbohydrates in this entry.

5.6 Ligand geometry [i](#)

Of 22 ligands modelled in this entry, 4 are monoatomic - leaving 18 for Mogul analysis.

In the following table, the Counts columns list the number of bonds (or angles) for which Mogul statistics could be retrieved, the number of bonds (or angles) that are observed in the model and the number of bonds (or angles) that are defined in the chemical component dictionary. The Link column lists molecule types, if any, to which the group is linked. The Z score for a bond length (or angle) is the number of standard deviations the observed value is removed from the expected value. A bond length (or angle) with $|Z| > 2$ is considered an outlier worth inspection. RMSZ is the root-mean-square of all Z scores of the bond lengths (or angles).

Mol	Type	Chain	Res	Link	Bond lengths			Bond angles		
					Counts	RMSZ	$\# Z > 2$	Counts	RMSZ	$\# Z > 2$
3	FAD	A	702	-	52,58,58	2.19	18 (34%)	52,89,89	1.63	8 (15%)

Mol	Type	Chain	Res	Link	Bond lengths			Bond angles		
					Counts	RMSZ	# Z > 2	Counts	RMSZ	# Z > 2
5	TPP	A	704	4	20,27,27	1.36	5 (25%)	27,40,40	2.15	7 (25%)
6	PYR	A	705	-	2,5,5	0.72	0	2,6,6	1.23	0
6	PYR	A	706	-	2,5,5	0.31	0	2,6,6	1.11	0
7	OXY	A	707	-	1,1,1	0.02	0	0,0,0	0.00	-
7	OXY	A	708	-	1,1,1	0.01	0	0,0,0	0.00	-
3	FAD	B	702	-	52,58,58	2.14	15 (28%)	52,89,89	1.50	6 (11%)
5	TPP	B	704	4	20,27,27	1.29	3 (15%)	27,40,40	2.30	11 (40%)
6	PYR	B	705	-	2,5,5	1.26	0	2,6,6	0.93	0
6	PYR	B	706	-	2,5,5	0.39	0	2,6,6	0.59	0
7	OXY	B	707	-	1,1,1	0.00	0	0,0,0	0.00	-
7	OXY	B	708	-	1,1,1	0.03	0	0,0,0	0.00	-
7	OXY	B	709	-	1,1,1	0.04	0	0,0,0	0.00	-
7	OXY	B	710	-	1,1,1	0.03	0	0,0,0	0.00	-
7	OXY	B	711	-	1,1,1	0.03	0	0,0,0	0.00	-
7	OXY	B	712	-	1,1,1	0.05	0	0,0,0	0.00	-
7	OXY	B	713	-	1,1,1	0.11	0	0,0,0	0.00	-
8	PO4	B	714	-	4,4,4	0.93	0	6,6,6	0.26	0

In the following table, the Chirals column lists the number of chiral outliers, the number of chiral centers analysed, the number of these observed in the model and the number defined in the chemical component dictionary. Similar counts are reported in the Torsion and Rings columns. '-' means no outliers of that kind were identified.

Mol	Type	Chain	Res	Link	Chirals	Torsions	Rings
3	FAD	A	702	-	-	0/30/50/50	0/6/6/6
5	TPP	A	704	4	-	0/16/17/17	0/2/2/2
6	PYR	A	705	-	-	0/0/4/4	0/0/0/0
6	PYR	A	706	-	-	0/0/4/4	0/0/0/0
7	OXY	A	707	-	-	0/0/0/0	0/0/0/0
7	OXY	A	708	-	-	0/0/0/0	0/0/0/0
3	FAD	B	702	-	-	0/30/50/50	0/6/6/6
5	TPP	B	704	4	-	0/16/17/17	0/2/2/2
6	PYR	B	705	-	-	0/0/4/4	0/0/0/0
6	PYR	B	706	-	-	0/0/4/4	0/0/0/0
7	OXY	B	707	-	-	0/0/0/0	0/0/0/0
7	OXY	B	708	-	-	0/0/0/0	0/0/0/0
7	OXY	B	709	-	-	0/0/0/0	0/0/0/0
7	OXY	B	710	-	-	0/0/0/0	0/0/0/0
7	OXY	B	711	-	-	0/0/0/0	0/0/0/0
7	OXY	B	712	-	-	0/0/0/0	0/0/0/0
7	OXY	B	713	-	-	0/0/0/0	0/0/0/0
8	PO4	B	714	-	-	0/0/0/0	0/0/0/0

The worst 5 of 41 bond length outliers are listed below:

Mol	Chain	Res	Type	Atoms	Z	Observed(Å)	Ideal(Å)
3	B	702	FAD	C1'-N10	-7.84	1.40	1.48
3	A	702	FAD	C1'-N10	-7.69	1.40	1.48
3	B	702	FAD	C2B-C1B	-5.59	1.44	1.53
3	A	702	FAD	C2B-C1B	-5.53	1.44	1.53
3	A	702	FAD	O3'-C3'	-3.79	1.34	1.43

The worst 5 of 32 bond angle outliers are listed below:

Mol	Chain	Res	Type	Atoms	Z	Observed(°)	Ideal(°)
3	B	702	FAD	N3A-C2A-N1A	-5.12	124.85	128.87
3	B	702	FAD	N3-C2-N1	-4.46	120.18	127.69
5	A	704	TPP	CM4-C4-C5	-4.41	119.57	128.91
5	B	704	TPP	CM4-C4-C5	-4.34	119.72	128.91
5	B	704	TPP	N1'-C2'-N3'	-4.08	117.84	125.50

There are no chirality outliers.

There are no torsion outliers.

There are no ring outliers.

10 monomers are involved in 22 short contacts:

Mol	Chain	Res	Type	Clashes	Symm-Clashes
3	A	702	FAD	2	0
5	A	704	TPP	2	0
6	A	705	PYR	7	0
3	B	702	FAD	2	0
5	B	704	TPP	7	0
6	B	705	PYR	5	0
6	B	706	PYR	2	0
7	B	707	OXY	2	0
7	B	711	OXY	1	0
7	B	713	OXY	1	0

5.7 Other polymers [i](#)

There are no such residues in this entry.

5.8 Polymer linkage issues [i](#)

There are no chain breaks in this entry.

6 Fit of model and data [i](#)

6.1 Protein, DNA and RNA chains [i](#)

In the following table, the column labelled ‘#RSRZ> 2’ contains the number (and percentage) of RSRZ outliers, followed by percent RSRZ outliers for the chain as percentile scores relative to all X-ray entries and entries of similar resolution. The OWAB column contains the minimum, median, 95th percentile and maximum values of the occupancy-weighted average B-factor per residue. The column labelled ‘Q< 0.9’ lists the number of (and percentage) of residues with an average occupancy less than 0.9.

Mol	Chain	Analysed	<RSRZ>	#RSRZ>2	OWAB(Å ²)	Q<0.9
1	A	545/677 (80%)	0.22	44 (8%) 15 17	19, 29, 67, 119	0
1	B	564/677 (83%)	0.95	120 (21%) 1 1	18, 39, 121, 146	0
All	All	1109/1354 (81%)	0.59	164 (14%) 3 4	18, 33, 110, 146	0

The worst 5 of 164 RSRZ outliers are listed below:

Mol	Chain	Res	Type	RSRZ
1	B	273	LEU	15.3
1	B	458	TYR	11.1
1	B	591	TYR	9.7
1	A	277	THR	9.1
1	A	279	ARG	8.8

6.2 Non-standard residues in protein, DNA, RNA chains [i](#)

There are no non-standard protein/DNA/RNA residues in this entry.

6.3 Carbohydrates [i](#)

There are no carbohydrates in this entry.

6.4 Ligands [i](#)

In the following table, the Atoms column lists the number of modelled atoms in the group and the number defined in the chemical component dictionary. LLDF column lists the quality of electron density of the group with respect to its neighbouring residues in protein, DNA or RNA chains. The B-factors column lists the minimum, median, 95th percentile and maximum values of B factors of atoms in the group. The column labelled ‘Q< 0.9’ lists the number of atoms with occupancy less than 0.9.

Mol	Type	Chain	Res	Atoms	RSCC	RSR	LLDF	B-factors(\AA^2)	Q<0.9
7	OXY	A	707	2/2	0.92	0.33	15.04	75,75,75,76	0
7	OXY	B	711	2/2	0.93	0.35	10.71	64,64,64,66	0
6	PYR	B	706	6/6	0.77	0.21	9.17	79,88,90,91	0
7	OXY	A	708	2/2	0.87	0.28	8.91	61,61,61,69	0
6	PYR	A	706	6/6	0.60	0.33	6.05	107,110,111,111	0
6	PYR	A	705	6/6	0.86	0.21	4.95	31,56,64,70	0
6	PYR	B	705	6/6	0.96	0.13	3.67	44,52,69,72	0
7	OXY	B	708	2/2	0.94	0.25	1.73	69,69,69,70	0
7	OXY	B	707	2/2	0.86	0.24	1.40	91,91,91,94	0
3	FAD	B	702	53/53	0.96	0.11	-0.47	32,42,80,87	0
3	FAD	A	702	53/53	0.98	0.09	-0.55	22,31,75,79	0
5	TPP	A	704	26/26	0.98	0.08	-0.62	19,26,30,31	0
2	K	B	701	1/1	0.99	0.07	-0.64	39,39,39,39	0
5	TPP	B	704	26/26	0.98	0.08	-1.20	17,23,26,28	0
2	K	A	701	1/1	0.99	0.04	-1.93	30,30,30,30	0
7	OXY	B	710	2/2	0.92	0.13	-	58,58,58,68	0
4	MG	B	703	1/1	0.97	0.05	-	26,26,26,26	0
7	OXY	B	713	2/2	0.88	0.16	-	57,57,57,59	0
7	OXY	B	712	2/2	0.76	0.17	-	67,67,67,69	0
8	PO4	B	714	5/5	0.95	0.17	-	65,71,78,80	0
7	OXY	B	709	2/2	0.92	0.31	-	56,56,56,59	0
4	MG	A	703	1/1	0.97	0.04	-	30,30,30,30	0

6.5 Other polymers [i](#)

There are no such residues in this entry.