



# Full wwPDB X-ray Structure Validation Report ⓘ

Feb 1, 2016 – 05:36 PM GMT

PDB ID : 4IV9  
Title : Structure of the Flavoprotein Tryptophan-2-Monooxygenase  
Authors : Gaweska, H.M.; Taylor, A.B.; Hart, P.J.; Fitzpatrick, P.F.  
Deposited on : 2013-01-22  
Resolution : 1.95 Å(reported)

This is a Full wwPDB X-ray Structure Validation Report for a publicly released PDB entry.  
We welcome your comments at [validation@mail.wwpdb.org](mailto:validation@mail.wwpdb.org)  
A user guide is available at  
<http://wwpdb.org/validation/2016/XrayValidationReportHelp>  
with specific help available everywhere you see the ⓘ symbol.

---

The following versions of software and data (see [references ⓘ](#)) were used in the production of this report:

MolProbity : 4.02b-467  
Mogul : 1.7 (RC4), CSD as536be (2015)  
Xtriage (Phenix) : 1.9-1692  
EDS : rb-20026688  
Percentile statistics : 20151230.v01 (using entries in the PDB archive December 30th 2015)  
Refmac : 5.8.0135  
CCP4 : 6.5.0  
Ideal geometry (proteins) : Engh & Huber (2001)  
Ideal geometry (DNA, RNA) : Parkinson et al. (1996)  
Validation Pipeline (wwPDB-VP) : trunk26865

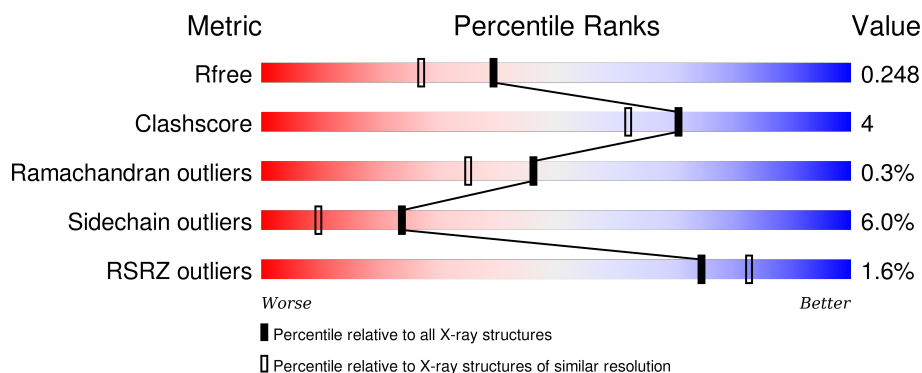
# 1 Overall quality at a glance

The following experimental techniques were used to determine the structure:

## *X-RAY DIFFRACTION*

The reported resolution of this entry is 1.95 Å.

Percentile scores (ranging between 0-100) for global validation metrics of the entry are shown in the following graphic. The table shows the number of entries on which the scores are based.



Metric	Whole archive (#Entries)	Similar resolution (#Entries, resolution range(Å))
$R_{free}$	91344	1833 (1.96-1.96)
Clashscore	102246	1953 (1.96-1.96)
Ramachandran outliers	100387	1936 (1.96-1.96)
Sidechain outliers	100360	1936 (1.96-1.96)
RSRZ outliers	91569	1835 (1.96-1.96)

The table below summarises the geometric issues observed across the polymeric chains and their fit to the electron density. The red, orange, yellow and green segments on the lower bar indicate the fraction of residues that contain outliers for  $\geq 3$ , 2, 1 and 0 types of geometric quality criteria. A grey segment represents the fraction of residues that are not modelled. The numeric value for each fraction is indicated below the corresponding segment, with a dot representing fractions  $\leq 5\%$ . The upper red bar (where present) indicates the fraction of residues that have poor fit to the electron density. The numeric value is given above the bar.

Mol	Chain	Length	Quality of chain
1	A	557	<div> <div>2%</div> <div>87%</div> <div>10%</div> <div>..</div> </div>
1	B	557	<div> <div>2%</div> <div>83%</div> <div>15%</div> <div>..</div> </div>

The following table lists non-polymeric compounds, carbohydrate monomers and non-standard residues in protein, DNA, RNA chains that are outliers for geometric or electron-density-fit criteria:

Mol	Type	Chain	Res	Chirality	Geometry	Clashes	Electron density
4	PO4	A	604	-	-	-	X

## 2 Entry composition [i](#)

There are 6 unique types of molecules in this entry. The entry contains 9537 atoms, of which 0 are hydrogens and 0 are deuteriums.

In the tables below, the ZeroOcc column contains the number of atoms modelled with zero occupancy, the AltConf column contains the number of residues with at least one atom in alternate conformation and the Trace column contains the number of residues modelled with at most 2 atoms.

- Molecule 1 is a protein called Tryptophan 2-monooxygenase.

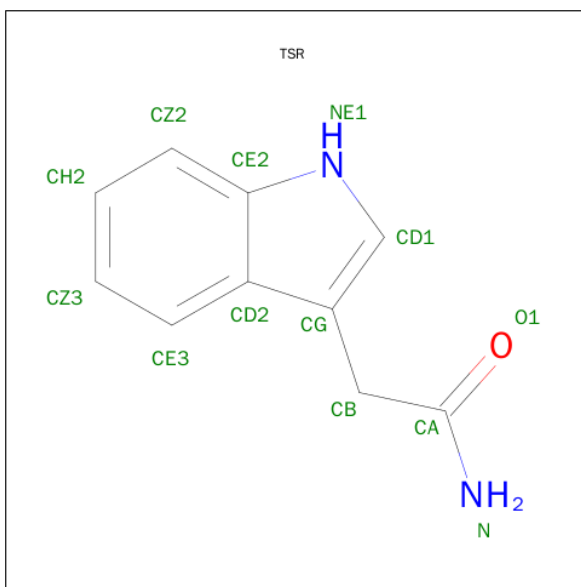
Mol	Chain	Residues	Atoms					ZeroOcc	AltConf	Trace
1	A	552	Total	C	N	O	S	0	2	0
			4324	2750	753	800	21			
1	B	552	Total	C	N	O	S	0	1	0
			4320	2747	753	799	21			

- Molecule 2 is FLAVIN-ADENINE DINUCLEOTIDE (three-letter code: FAD) (formula:  $C_{27}H_{33}N_9O_{15}P_2$ ).



Mol	Chain	Residues	Atoms					ZeroOcc	AltConf
2	A	1	Total	C	N	O	P	0	0
			53	27	9	15	2		
2	B	1	Total	C	N	O	P	0	0
			53	27	9	15	2		

- Molecule 3 is 2-(1H-INDOL-3-YL)ACETAMIDE (three-letter code: TSR) (formula:  $C_{10}H_{10}N_2O$ ).



Mol	Chain	Residues	Atoms				ZeroOcc	AltConf
3	A	1	Total	C	N	O	0	0
			13	10	2	1		
3	B	1	Total	C	N	O	0	0
			13	10	2	1		

- Molecule 4 is PHOSPHATE ION (three-letter code: PO4) (formula:  $O_4P$ ).



Mol	Chain	Residues	Atoms			ZeroOcc	AltConf
4	A	1	Total	O	P	0	0
			5	4	1		
4	A	1	Total	O	P	0	0
			5	4	1		

- Molecule 5 is 1,2-ETHANEDIOL (three-letter code: EDO) (formula:  $C_2H_6O_2$ ).



Mol	Chain	Residues	Atoms			ZeroOcc	AltConf
5	A	1	Total	C	O	0	0
			4	2	2		

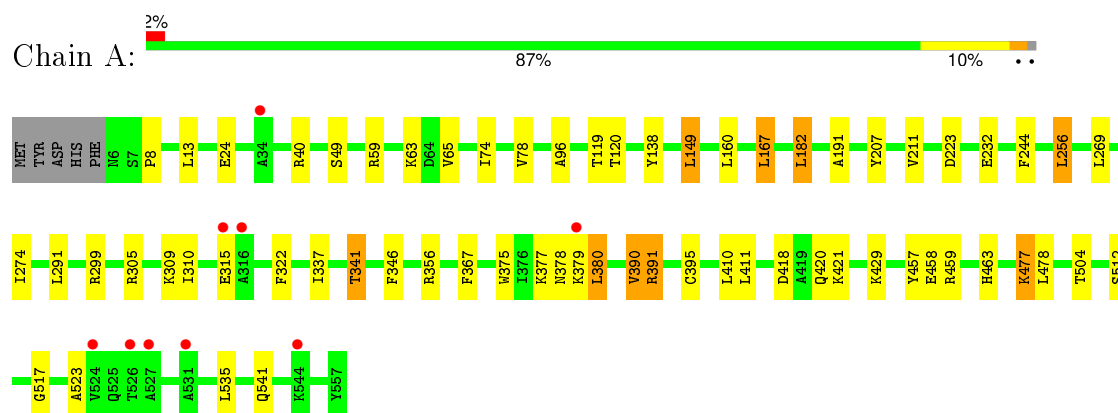
- Molecule 6 is water.

Mol	Chain	Residues	Atoms		ZeroOcc	AltConf
6	A	394	Total	O	0	0
			394	394		
6	B	353	Total	O	0	0
			353	353		

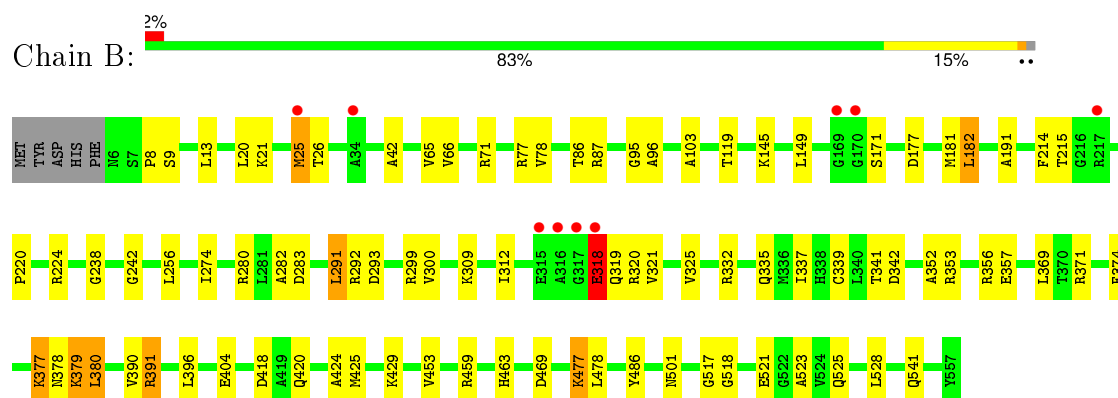
### 3 Residue-property plots [i](#)

These plots are drawn for all protein, RNA and DNA chains in the entry. The first graphic for a chain summarises the proportions of errors displayed in the second graphic. The second graphic shows the sequence view annotated by issues in geometry and electron density. Residues are color-coded according to the number of geometric quality criteria for which they contain at least one outlier: green = 0, yellow = 1, orange = 2 and red = 3 or more. A red dot above a residue indicates a poor fit to the electron density ( $RSRZ > 2$ ). Stretches of 2 or more consecutive residues without any outlier are shown as a green connector. Residues present in the sample, but not in the model, are shown in grey.

#### • Molecule 1: Tryptophan 2-monooxygenase



#### • Molecule 1: Tryptophan 2-monooxygenase



## 4 Data and refinement statistics

Property	Value	Source
Space group	P 21 21 2	Depositor
Cell constants a, b, c, $\alpha$ , $\beta$ , $\gamma$	111.14Å 122.21Å 76.63Å 90.00° 90.00° 90.00°	Depositor
Resolution (Å)	28.03 – 1.95 28.03 – 1.95	Depositor EDS
% Data completeness (in resolution range)	99.4 (28.03-1.95) 99.4 (28.03-1.95)	Depositor EDS
$R_{merge}$	(Not available)	Depositor
$R_{sym}$	0.14	Depositor
$\langle I/\sigma(I) \rangle$ <sup>1</sup>	2.55 (at 1.95Å)	Xtriage
Refinement program	PHENIX (phenix.refine: 1.8.1_1161)	Depositor
R, $R_{free}$	0.187 , 0.245 0.192 , 0.248	Depositor DCC
$R_{free}$ test set	3809 reflections (5.26%)	DCC
Wilson B-factor (Å <sup>2</sup> )	19.1	Xtriage
Anisotropy	0.441	Xtriage
Bulk solvent $k_{sol}$ (e/Å <sup>3</sup> ), $B_{sol}$ (Å <sup>2</sup> )	0.37 , 38.4	EDS
Estimated twinning fraction	No twinning to report.	Xtriage
L-test for twinning <sup>2</sup>	$\langle  L  \rangle = 0.46$ , $\langle L^2 \rangle = 0.29$	Xtriage
Outliers	0 of 76161 reflections	Xtriage
$F_o, F_c$ correlation	0.95	EDS
Total number of atoms	9537	wwPDB-VP
Average B, all atoms (Å <sup>2</sup> )	14.0	wwPDB-VP

Xtriage's analysis on translational NCS is as follows: *The largest off-origin peak in the Patterson function is 4.88% of the height of the origin peak. No significant pseudotranslation is detected.*

<sup>1</sup>Intensities estimated from amplitudes.

<sup>2</sup>Theoretical values of  $\langle |L| \rangle$ ,  $\langle L^2 \rangle$  for acentric reflections are 0.5, 0.375 respectively for untwinned datasets, and 0.333, 0.2 for perfectly twinned datasets.



## 5 Model quality

### 5.1 Standard geometry

Bond lengths and bond angles in the following residue types are not validated in this section: PO4, TSR, EDO, FAD

The Z score for a bond length (or angle) is the number of standard deviations the observed value is removed from the expected value. A bond length (or angle) with  $|Z| > 5$  is considered an outlier worth inspection. RMSZ is the root-mean-square of all Z scores of the bond lengths (or angles).

Mol	Chain	Bond lengths		Bond angles	
		RMSZ	$\# Z  > 5$	RMSZ	$\# Z  > 5$
1	A	0.40	0/4439	0.55	0/6019
1	B	0.41	0/4431	0.56	0/6007
All	All	0.41	0/8870	0.56	0/12026

There are no bond length outliers.

There are no bond angle outliers.

There are no chirality outliers.

There are no planarity outliers.

### 5.2 Too-close contacts

In the following table, the Non-H and H(model) columns list the number of non-hydrogen atoms and hydrogen atoms in the chain respectively. The H(added) column lists the number of hydrogen atoms added and optimized by MolProbity. The Clashes column lists the number of clashes within the asymmetric unit, whereas Symm-Clashes lists symmetry related clashes.

Mol	Chain	Non-H	H(model)	H(added)	Clashes	Symm-Clashes
1	A	4324	0	4247	31	0
1	B	4320	0	4247	47	0
2	A	53	0	31	1	0
2	B	53	0	31	4	0
3	A	13	0	10	0	0
3	B	13	0	10	0	0
4	A	10	0	0	0	0
5	A	4	0	6	0	0
6	A	394	0	0	5	0
6	B	353	0	0	5	0
All	All	9537	0	8582	76	0

The all-atom clashscore is defined as the number of clashes found per 1000 atoms (including hydrogen atoms). The all-atom clashscore for this structure is 4.

All (76) close contacts within the same asymmetric unit are listed below, sorted by their clash magnitude.

Atom-1	Atom-2	Interatomic distance (Å)	Clash overlap (Å)
1:B:341:THR:HG23	1:B:352:ALA:HB1	1.49	0.92
1:B:477:LYS:HG3	1:B:517:GLY:HA3	1.78	0.64
1:B:42:ALA:HB3	1:B:325:VAL:HG22	1.79	0.64
1:B:523:ALA:HB2	2:B:601:FAD:H5'2	1.79	0.63
1:B:379:LYS:HG2	1:B:380:LEU:HD13	1.80	0.63
1:A:13:LEU:HD11	1:A:191:ALA:HB2	1.78	0.63
1:B:25:MET:HB3	1:B:26:THR:HG23	1.80	0.63
1:B:145:LYS:NZ	6:B:914:HOH:O	2.33	0.60
1:B:353:ARG:NH1	1:B:486:TYR:OH	2.34	0.60
1:B:96:ALA:HA	2:B:601:FAD:C4X	2.33	0.58
1:B:86:THR:HG22	1:B:87:ARG:HG3	1.84	0.58
1:A:310:ILE:HD12	1:A:346:PHE:HE1	1.69	0.58
1:B:312:ILE:HD11	1:B:325:VAL:HG21	1.87	0.57
1:B:378:ASN:HB2	1:B:380:LEU:HD22	1.88	0.56
1:A:78:VAL:HG13	1:A:274:ILE:HG23	1.86	0.56
1:B:20:LEU:HD21	1:B:528:LEU:HD11	1.88	0.56
1:A:299:ARG:NH2	1:A:337:ILE:HD12	2.21	0.56
1:A:299:ARG:HH21	1:A:337:ILE:HD12	1.71	0.55
1:B:214:PHE:CE1	1:B:220:PRO:HG2	2.42	0.55
1:A:391:ARG:NH2	1:B:357:GLU:OE2	2.37	0.55
1:B:215:THR:HA	1:B:224:ARG:HG3	1.89	0.55
1:A:429:LYS:HB2	6:A:1028:HOH:O	2.07	0.53
1:A:138:TYR:CZ	1:A:149:LEU:HD12	2.44	0.53
1:A:477:LYS:HG3	1:A:517:GLY:HA3	1.91	0.52
1:A:96:ALA:HA	2:A:601:FAD:C4X	2.40	0.52
1:A:305:ARG:NH1	1:A:504:THR:O	2.43	0.51
1:B:318:GLU:HG2	1:B:320:ARG:NH1	2.26	0.50
1:A:299:ARG:NH1	6:A:1041:HOH:O	2.43	0.50
1:B:341:THR:HG21	1:B:356:ARG:CD	2.42	0.49
1:B:341:THR:O	1:B:341:THR:HG22	2.12	0.49
1:A:378:ASN:HB2	1:A:380:LEU:HD22	1.94	0.49
1:B:341:THR:HG21	1:B:356:ARG:HG3	1.95	0.49
1:B:177:ASP:O	1:B:181:MET:HG3	2.13	0.48
1:B:391:ARG:HD2	1:B:418:ASP:OD2	2.13	0.48
1:B:341:THR:HG21	1:B:356:ARG:HD3	1.96	0.48
1:B:339:CYS:HB3	1:B:342:ASP:OD2	2.14	0.47
1:A:477:LYS:HG2	1:A:512:SER:HA	1.97	0.47

*Continued on next page...*

*Continued from previous page...*

Atom-1	Atom-2	Interatomic distance (Å)	Clash overlap (Å)
1:A:367:PHE:CZ	1:A:410:LEU:HD13	2.50	0.46
1:B:77:ARG:O	1:B:95:GLY:HA3	2.14	0.46
1:B:13:LEU:HD11	1:B:191:ALA:HB2	1.98	0.46
1:B:71:ARG:NH2	1:B:469:ASP:OD1	2.42	0.46
1:B:518:GLY:C	2:B:601:FAD:H1'2	2.37	0.45
1:A:375:TRP:CD2	1:A:395:CYS:HB3	2.51	0.45
1:B:521:GLU:O	1:B:525:GLN:HG3	2.17	0.45
1:A:390:VAL:HG22	1:A:411:LEU:O	2.17	0.45
1:B:300:VAL:HG13	1:B:312:ILE:HG23	1.98	0.45
1:A:421:LYS:HE2	1:B:332:ARG:NH1	2.32	0.44
1:B:371:ARG:HD2	6:B:1021:HOH:O	2.18	0.44
1:B:374:PHE:HA	1:B:377:LYS:HE2	1.99	0.44
1:B:293:ASP:OD2	6:B:842:HOH:O	2.21	0.44
1:A:63:LYS:HE3	1:A:63:LYS:HB3	1.78	0.44
1:B:103:ALA:HB1	1:B:521:GLU:HB2	2.00	0.44
1:A:341:THR:HG21	1:A:356:ARG:HD3	1.98	0.44
1:A:49:SER:HB2	1:A:523:ALA:HB1	1.99	0.44
1:A:8:PRO:O	1:A:182:LEU:HG	2.18	0.44
1:B:424:ALA:O	1:B:425:MET:HG2	2.18	0.43
1:B:78:VAL:HG13	1:B:274:ILE:HG23	2.01	0.43
1:A:391:ARG:HE	1:A:418:ASP:CG	2.22	0.42
1:B:299:ARG:NH2	1:B:337:ILE:HD12	2.34	0.42
1:A:24:GLU:O	1:A:59:ARG:NH2	2.52	0.42
1:B:238:GLY:HA3	1:B:242:GLY:O	2.18	0.42
1:B:459:ARG:NH1	6:B:943:HOH:O	2.28	0.42
1:B:335:GLN:CD	1:B:356:ARG:HG2	2.40	0.42
1:A:40:ARG:HG2	1:A:322:PHE:CD1	2.55	0.42
1:A:377:LYS:HE3	6:A:1001:HOH:O	2.19	0.42
1:A:256:LEU:HA	1:A:256:LEU:HD12	1.92	0.42
1:B:523:ALA:CB	2:B:601:FAD:H5'2	2.49	0.41
1:B:8:PRO:O	1:B:182:LEU:HG	2.19	0.41
1:B:369:LEU:O	1:B:453:VAL:HG23	2.21	0.41
1:A:232:GLU:OE2	6:A:1054:HOH:O	2.21	0.41
1:A:167:LEU:HB3	6:A:983:HOH:O	2.20	0.41
1:B:283:ASP:OD1	1:B:292:ARG:NH1	2.43	0.41
1:A:429:LYS:HG2	1:A:457:TYR:CG	2.55	0.41
1:B:21:LYS:NZ	6:B:851:HOH:O	2.53	0.41
1:B:282:ALA:HA	1:B:291:LEU:HB3	2.04	0.40
1:A:207:TYR:O	1:A:211:VAL:HG23	2.21	0.40

There are no symmetry-related clashes.

## 5.3 Torsion angles

### 5.3.1 Protein backbone

In the following table, the Percentiles column shows the percent Ramachandran outliers of the chain as a percentile score with respect to all X-ray entries followed by that with respect to entries of similar resolution.

The Analysed column shows the number of residues for which the backbone conformation was analysed, and the total number of residues.

Mol	Chain	Analysed	Favoured	Allowed	Outliers	Percentiles	
1	A	552/557 (99%)	537 (97%)	14 (2%)	1 (0%)	52	43
1	B	551/557 (99%)	534 (97%)	15 (3%)	2 (0%)	39	27
All	All	1103/1114 (99%)	1071 (97%)	29 (3%)	3 (0%)	46	35

All (3) Ramachandran outliers are listed below:

Mol	Chain	Res	Type
1	A	391	ARG
1	B	318	GLU
1	B	391	ARG

### 5.3.2 Protein sidechains

In the following table, the Percentiles column shows the percent sidechain outliers of the chain as a percentile score with respect to all X-ray entries followed by that with respect to entries of similar resolution.

The Analysed column shows the number of residues for which the sidechain conformation was analysed, and the total number of residues.

Mol	Chain	Analysed	Rotameric	Outliers	Percentiles	
1	A	459/462 (99%)	432 (94%)	27 (6%)	24	10
1	B	458/462 (99%)	430 (94%)	28 (6%)	23	9
All	All	917/924 (99%)	862 (94%)	55 (6%)	24	10

All (55) residues with a non-rotameric sidechain are listed below:

Mol	Chain	Res	Type
1	A	65	VAL
1	A	74	ILE
1	A	119	THR

*Continued on next page...*

*Continued from previous page...*

Mol	Chain	Res	Type
1	A	120	THR
1	A	149	LEU
1	A	160	LEU
1	A	167	LEU
1	A	182	LEU
1	A	223	ASP
1	A	244	PHE
1	A	256	LEU
1	A	269	LEU
1	A	291	LEU
1	A	309	LYS
1	A	315	GLU
1	A	341	THR
1	A	379	LYS
1	A	380	LEU
1	A	390	VAL
1	A	420	GLN
1	A	458	GLU
1	A	459	ARG
1	A	463	HIS
1	A	477	LYS
1	A	478	LEU
1	A	535	LEU
1	A	541	GLN
1	B	9	SER
1	B	25	MET
1	B	65	VAL
1	B	66	VAL
1	B	119	THR
1	B	149	LEU
1	B	171	SER
1	B	182	LEU
1	B	256	LEU
1	B	280	ARG
1	B	291	LEU
1	B	309	LYS
1	B	318	GLU
1	B	319	GLN
1	B	321	VAL
1	B	377	LYS
1	B	379	LYS
1	B	380	LEU

*Continued on next page...*

*Continued from previous page...*

Mol	Chain	Res	Type
1	B	390	VAL
1	B	396	LEU
1	B	404	GLU
1	B	420	GLN
1	B	429	LYS
1	B	463	HIS
1	B	477	LYS
1	B	478	LEU
1	B	501	ASN
1	B	541	GLN

Some sidechains can be flipped to improve hydrogen bonding and reduce clashes. There are no such sidechains identified.

### 5.3.3 RNA ⓘ

There are no RNA molecules in this entry.

## 5.4 Non-standard residues in protein, DNA, RNA chains ⓘ

There are no non-standard protein/DNA/RNA residues in this entry.

## 5.5 Carbohydrates ⓘ

There are no carbohydrates in this entry.

## 5.6 Ligand geometry ⓘ

7 ligands are modelled in this entry.

In the following table, the Counts columns list the number of bonds (or angles) for which Mogul statistics could be retrieved, the number of bonds (or angles) that are observed in the model and the number of bonds (or angles) that are defined in the chemical component dictionary. The Link column lists molecule types, if any, to which the group is linked. The Z score for a bond length (or angle) is the number of standard deviations the observed value is removed from the expected value. A bond length (or angle) with  $|Z| > 2$  is considered an outlier worth inspection. RMSZ is the root-mean-square of all Z scores of the bond lengths (or angles).

Mol	Type	Chain	Res	Link	Bond lengths			Bond angles		
					Counts	RMSZ	$\# Z  > 2$	Counts	RMSZ	$\# Z  > 2$
2	FAD	A	601	-	48,58,58	1.98	9 (18%)	54,89,89	2.31	10 (18%)

Mol	Type	Chain	Res	Link	Bond lengths			Bond angles		
					Counts	RMSZ	# Z  > 2	Counts	RMSZ	# Z  > 2
3	TSR	A	602	-	13,14,14	1.27	1 (7%)	10,19,19	0.74	0
4	PO4	A	603	-	4,4,4	0.22	0	6,6,6	0.27	0
4	PO4	A	604	-	4,4,4	0.47	0	6,6,6	0.28	0
5	EDO	A	605	-	3,3,3	0.54	0	2,2,2	0.38	0
2	FAD	B	601	-	48,58,58	1.93	11 (22%)	54,89,89	2.39	9 (16%)
3	TSR	B	602	-	13,14,14	1.29	1 (7%)	10,19,19	0.67	0

In the following table, the Chirals column lists the number of chiral outliers, the number of chiral centers analysed, the number of these observed in the model and the number defined in the chemical component dictionary. Similar counts are reported in the Torsion and Rings columns. '-' means no outliers of that kind were identified.

Mol	Type	Chain	Res	Link	Chirals	Torsions	Rings
2	FAD	A	601	-	-	0/30/50/50	0/6/6/6
3	TSR	A	602	-	-	0/3/4/4	0/2/2/2
4	PO4	A	603	-	-	0/0/0/0	0/0/0/0
4	PO4	A	604	-	-	0/0/0/0	0/0/0/0
5	EDO	A	605	-	-	0/1/1/1	0/0/0/0
2	FAD	B	601	-	-	0/30/50/50	0/6/6/6
3	TSR	B	602	-	-	0/3/4/4	0/2/2/2

All (22) bond length outliers are listed below:

Mol	Chain	Res	Type	Atoms	Z	Observed(Å)	Ideal(Å)
2	A	601	FAD	C8M-C8	-6.04	1.38	1.51
2	A	601	FAD	C7M-C7	-5.73	1.39	1.51
2	B	601	FAD	C7M-C7	-5.67	1.39	1.51
2	B	601	FAD	C8M-C8	-5.65	1.39	1.51
2	A	601	FAD	C10-N10	-4.62	1.33	1.39
2	B	601	FAD	C10-N10	-4.27	1.34	1.39
2	B	601	FAD	C5A-C4A	-3.17	1.33	1.40
2	A	601	FAD	C9A-N10	-2.95	1.34	1.38
2	A	601	FAD	C5A-C4A	-2.94	1.33	1.40
2	B	601	FAD	C9A-N10	-2.89	1.34	1.38
2	A	601	FAD	P-O2P	-2.22	1.45	1.54
2	B	601	FAD	C5A-N7A	-2.06	1.32	1.39
2	B	601	FAD	P-O2P	-2.01	1.46	1.54
2	B	601	FAD	C10-N1	2.50	1.39	1.35
2	A	601	FAD	C2A-N1A	2.63	1.38	1.33
2	B	601	FAD	C2A-N1A	2.73	1.39	1.33
2	B	601	FAD	C4-N3	3.19	1.39	1.33
3	A	602	TSR	CA-N	3.20	1.43	1.32

*Continued on next page...*

*Continued from previous page...*

Mol	Chain	Res	Type	Atoms	Z	Observed(Å)	Ideal(Å)
3	B	602	TSR	CA-N	3.47	1.43	1.32
2	B	601	FAD	C2A-N3A	3.70	1.38	1.32
2	A	601	FAD	C2A-N3A	3.79	1.38	1.32
2	A	601	FAD	C4-N3	3.97	1.40	1.33

All (19) bond angle outliers are listed below:

Mol	Chain	Res	Type	Atoms	Z	Observed(°)	Ideal(°)
2	B	601	FAD	N3A-C2A-N1A	-13.66	118.44	128.89
2	A	601	FAD	N3A-C2A-N1A	-13.17	118.81	128.89
2	A	601	FAD	P-O3P-PA	-3.34	123.35	132.73
2	B	601	FAD	P-O3P-PA	-3.16	123.86	132.73
2	B	601	FAD	C4B-O4B-C1B	-2.97	106.46	109.72
2	B	601	FAD	C4X-C4-N3	-2.94	119.57	123.59
2	A	601	FAD	C4X-C4-N3	-2.93	119.58	123.59
2	B	601	FAD	C4A-C5A-N7A	-2.43	107.24	109.48
2	A	601	FAD	C4B-O4B-C1B	-2.40	107.08	109.72
2	A	601	FAD	C4A-C5A-N7A	-2.24	107.42	109.48
2	A	601	FAD	C2B-C1B-N9A	-2.12	111.05	114.29
2	B	601	FAD	C4-C4X-N5	2.00	121.15	118.72
2	B	601	FAD	C5X-C9A-N10	2.21	119.30	117.62
2	A	601	FAD	C1'-N10-C9A	2.43	121.59	118.86
2	A	601	FAD	C5X-C9A-N10	3.01	119.91	117.62
2	B	601	FAD	C4X-N5-C5X	3.12	120.35	116.76
2	A	601	FAD	C4X-N5-C5X	3.13	120.36	116.76
2	A	601	FAD	C4-N3-C2	5.52	120.02	115.25
2	B	601	FAD	C4-N3-C2	6.72	121.06	115.25

There are no chirality outliers.

There are no torsion outliers.

There are no ring outliers.

2 monomers are involved in 5 short contacts:

Mol	Chain	Res	Type	Clashes	Symm-Clashes
2	A	601	FAD	1	0
2	B	601	FAD	4	0

## 5.7 Other polymers ⓘ

There are no such residues in this entry.



## 5.8 Polymer linkage issues ⓘ

There are no chain breaks in this entry.

## 6 Fit of model and data [i](#)

### 6.1 Protein, DNA and RNA chains [i](#)

In the following table, the column labelled ‘#RSRZ> 2’ contains the number (and percentage) of RSRZ outliers, followed by percent RSRZ outliers for the chain as percentile scores relative to all X-ray entries and entries of similar resolution. The OWAB column contains the minimum, median, 95<sup>th</sup> percentile and maximum values of the occupancy-weighted average B-factor per residue. The column labelled ‘Q< 0.9’ lists the number of (and percentage) of residues with an average occupancy less than 0.9.

Mol	Chain	Analysed	<RSRZ>	#RSRZ>2	OWAB(Å <sup>2</sup> )	Q<0.9
1	A	552/557 (99%)	-0.03	9 (1%) 74 83	7, 13, 24, 43	0
1	B	552/557 (99%)	0.01	9 (1%) 74 83	7, 14, 26, 44	0
All	All	1104/1114 (99%)	-0.01	18 (1%) 74 83	7, 13, 25, 44	0

All (18) RSRZ outliers are listed below:

Mol	Chain	Res	Type	RSRZ
1	B	169	GLY	4.4
1	A	315	GLU	3.7
1	A	316	ALA	3.6
1	B	316	ALA	3.3
1	B	170	GLY	3.3
1	A	379	LYS	3.3
1	A	34	ALA	3.2
1	B	25	MET	3.1
1	B	318	GLU	2.9
1	A	524	VAL	2.8
1	A	527	ALA	2.5
1	B	217	ARG	2.3
1	B	315	GLU	2.2
1	B	317	GLY	2.1
1	A	526	THR	2.1
1	B	34	ALA	2.1
1	A	544	LYS	2.0
1	A	531	ALA	2.0

### 6.2 Non-standard residues in protein, DNA, RNA chains [i](#)

There are no non-standard protein/DNA/RNA residues in this entry.

### 6.3 Carbohydrates [i](#)

There are no carbohydrates in this entry.

### 6.4 Ligands [i](#)

In the following table, the Atoms column lists the number of modelled atoms in the group and the number defined in the chemical component dictionary. LLDF column lists the quality of electron density of the group with respect to its neighbouring residues in protein, DNA or RNA chains. The B-factors column lists the minimum, median, 95<sup>th</sup> percentile and maximum values of B factors of atoms in the group. The column labelled 'Q< 0.9' lists the number of atoms with occupancy less than 0.9.

Mol	Type	Chain	Res	Atoms	RSCC	RSR	LLDF	B-factors(Å <sup>2</sup> )	Q<0.9
4	PO4	A	604	5/5	0.92	0.14	3.37	29,38,49,52	0
2	FAD	B	601	53/53	0.96	0.10	-0.01	7,9,13,15	0
5	EDO	A	605	4/4	0.89	0.10	-0.33	18,27,29,32	0
3	TSR	A	602	13/13	0.95	0.10	-0.42	7,10,13,15	0
2	FAD	A	601	53/53	0.97	0.09	-0.66	5,9,14,17	0
3	TSR	B	602	13/13	0.97	0.09	-1.49	8,10,12,13	0
4	PO4	A	603	5/5	0.95	0.12	-	30,32,39,47	0

### 6.5 Other polymers [i](#)

There are no such residues in this entry.