



Full wwPDB X-ray Structure Validation Report ⓘ

Jan 31, 2016 – 08:08 PM GMT

PDB ID : 1IYK
Title : Crystal structure of candida albicans N-myristoyltransferase with myristoyl-COA and peptidic inhibitor
Authors : Sogabe, S.; Fukami, T.A.; Morikami, K.; Shiratori, Y.; Aoki, Y.; D'Arcy, A.; Winkler, F.K.; Banner, D.W.; Ohtsuka, T.
Deposited on : 2002-08-29
Resolution : 2.30 Å(reported)

This is a Full wwPDB X-ray Structure Validation Report for a publicly released PDB entry.
We welcome your comments at validation@mail.wwpdb.org
A user guide is available at
<http://wwpdb.org/validation/2016/XrayValidationReportHelp>
with specific help available everywhere you see the ⓘ symbol.

The following versions of software and data (see [references ⓘ](#)) were used in the production of this report:

MolProbity : 4.02b-467
Mogul : 1.7 (RC4), CSD as536be (2015)
Xtriage (Phenix) : **NOT EXECUTED**
EDS : **NOT EXECUTED**
Percentile statistics : 20151230.v01 (using entries in the PDB archive December 30th 2015)
Ideal geometry (proteins) : Engh & Huber (2001)
Ideal geometry (DNA, RNA) : Parkinson et al. (1996)
Validation Pipeline (wwPDB-VP) : trunk26865

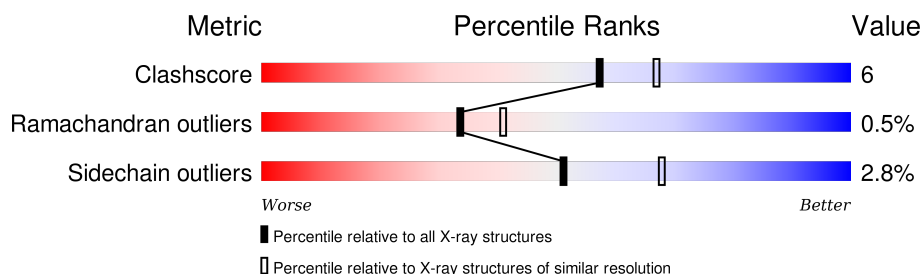
1 Overall quality at a glance

The following experimental techniques were used to determine the structure:

X-RAY DIFFRACTION

The reported resolution of this entry is 2.30 Å.

Percentile scores (ranging between 0-100) for global validation metrics of the entry are shown in the following graphic. The table shows the number of entries on which the scores are based.



Metric	Whole archive (#Entries)	Similar resolution (#Entries, resolution range(Å))
Clashscore	102246	4452 (2.30-2.30)
Ramachandran outliers	100387	4410 (2.30-2.30)
Sidechain outliers	100360	4409 (2.30-2.30)

The table below summarises the geometric issues observed across the polymeric chains and their fit to the electron density. The red, orange, yellow and green segments on the lower bar indicate the fraction of residues that contain outliers for ≥ 3 , 2, 1 and 0 types of geometric quality criteria. A grey segment represents the fraction of residues that are not modelled. The numeric value for each fraction is indicated below the corresponding segment, with a dot representing fractions $\leq 5\%$. The upper red bar (where present) indicates the fraction of residues that have poor fit to the electron density. The numeric value is given above the bar.

Note EDS was not executed.

Mol	Chain	Length	Quality of chain
1	A	392	
1	B	392	

The following table lists non-polymeric compounds, carbohydrate monomers and non-standard residues in protein, DNA, RNA chains that are outliers for geometric or electron-density-fit criteria:

Mol	Type	Chain	Res	Chirality	Geometry	Clashes	Electron density
2	MYA	A	501	X	-	-	-

2 Entry composition [i](#)

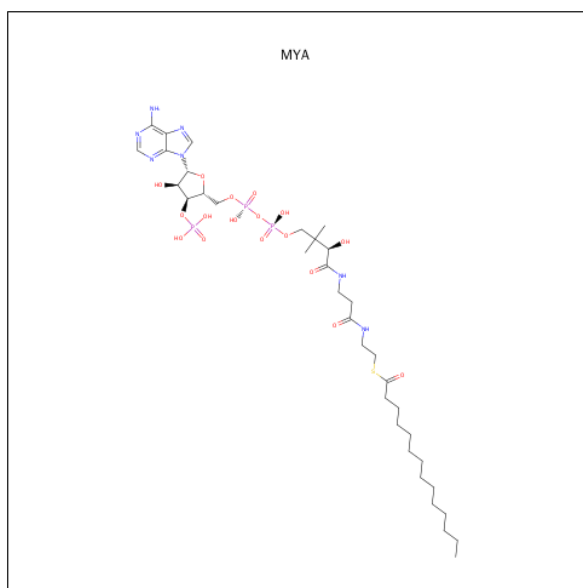
There are 4 unique types of molecules in this entry. The entry contains 6755 atoms, of which 0 are hydrogens and 0 are deuteriums.

In the tables below, the ZeroOcc column contains the number of atoms modelled with zero occupancy, the AltConf column contains the number of residues with at least one atom in alternate conformation and the Trace column contains the number of residues modelled with at most 2 atoms.

- Molecule 1 is a protein called MYRISTOYL-COA:PROTEIN N-MYRISTOYLTRANSFERASE.

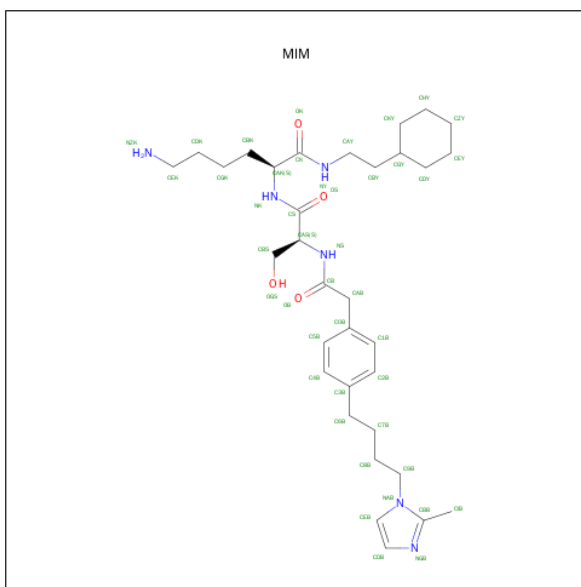
Mol	Chain	Residues	Atoms					ZeroOcc	AltConf	Trace
1	A	392	Total	C	N	O	S	0	0	0
			3210	2079	524	598	9			
1	B	392	Total	C	N	O	S	0	0	0
			3210	2079	524	598	9			

- Molecule 2 is TETRADECANOYL-COA (three-letter code: MYA) (formula: $C_{35}H_{62}N_7O_{17}P_3S$).



Mol	Chain	Residues	Atoms						ZeroOcc	AltConf
2	A	1	Total	C	N	O	P	S	0	0
			63	35	7	17	3	1		
2	B	1	Total	C	N	O	P	S	0	0
			63	35	7	17	3	1		

- Molecule 3 is [CYCLOHEXYLETHYL]-[4-[2-METHYL-1-IMIDAZOLYL-BUTYL]PHENYL]ACETYL]-SERYL]-LYSINYL]-AMINE (three-letter code: MIM) (formula: $C_{33}H_{52}N_6O_4$).



Mol	Chain	Residues	Atoms				ZeroOcc	AltConf
3	A	1	Total 43	C 33	N 6	O 4	0	0
3	B	1	Total 43	C 33	N 6	O 4	0	0

- Molecule 4 is water.

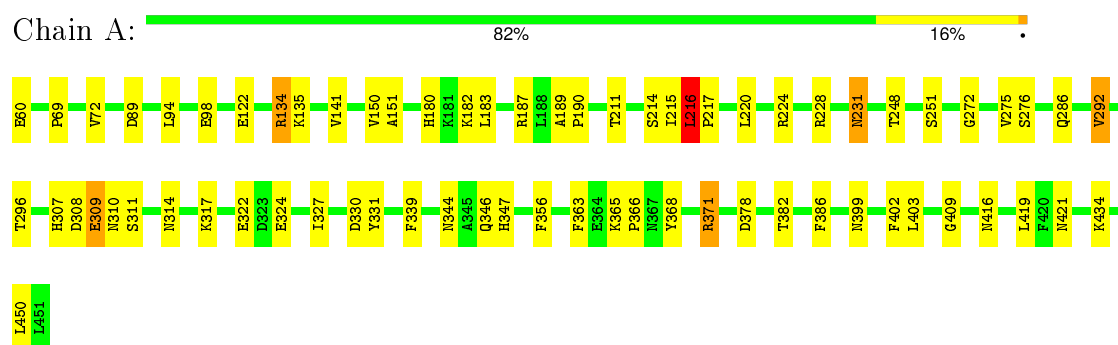
Mol	Chain	Residues	Atoms	ZeroOcc	AltConf
4	A	65	Total O 65 65	0	0
4	B	58	Total O 58 58	0	0

3 Residue-property plots

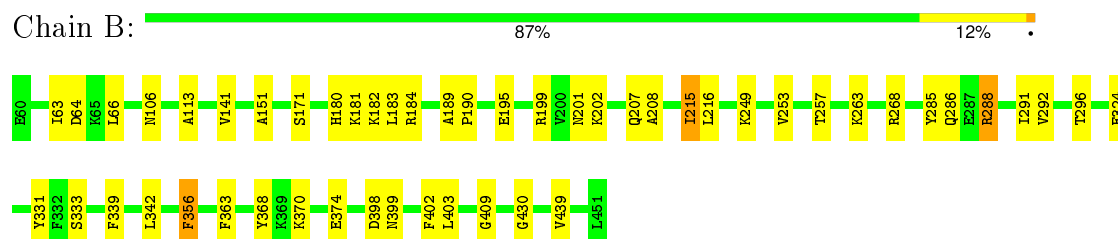
These plots are drawn for all protein, RNA and DNA chains in the entry. The first graphic for a chain summarises the proportions of errors displayed in the second graphic. The second graphic shows the sequence view annotated by issues in geometry and electron density. Residues are color-coded according to the number of geometric quality criteria for which they contain at least one outlier: green = 0, yellow = 1, orange = 2 and red = 3 or more. A red dot above a residue indicates a poor fit to the electron density ($RSRZ > 2$). Stretches of 2 or more consecutive residues without any outlier are shown as a green connector. Residues present in the sample, but not in the model, are shown in grey.

Note EDS was not executed.

• Molecule 1: MYRISTOYL-COA:PROTEIN N-MYRISTOYLTRANSFERASE



• Molecule 1: MYRISTOYL-COA:PROTEIN N-MYRISTOYLTRANSFERASE



4 Data and refinement statistics

Xtriage (Phenix) and EDS were not executed - this section will therefore be incomplete.

Property	Value	Source
Space group	P 21 21 21	Depositor
Cell constants a, b, c, α , β , γ	58.70 Å 95.33 Å 176.55 Å 90.00° 90.00° 90.00°	Depositor
Resolution (Å)	40.00 – 2.30	Depositor
% Data completeness (in resolution range)	92.2 (40.00-2.30)	Depositor
R_{merge}	0.07	Depositor
R_{sym}	(Not available)	Depositor
Refinement program	CNX 2002	Depositor
R, R_{free}	0.192 , 0.244	Depositor
Estimated twinning fraction	No twinning to report.	Xtriage
Total number of atoms	6755	wwPDB-VP
Average B, all atoms (Å ²)	35.0	wwPDB-VP

5 Model quality [i](#)

5.1 Standard geometry [i](#)

Bond lengths and bond angles in the following residue types are not validated in this section: MYA, MIM

The Z score for a bond length (or angle) is the number of standard deviations the observed value is removed from the expected value. A bond length (or angle) with $|Z| > 5$ is considered an outlier worth inspection. RMSZ is the root-mean-square of all Z scores of the bond lengths (or angles).

Mol	Chain	Bond lengths		Bond angles	
		RMSZ	$\# Z > 5$	RMSZ	$\# Z > 5$
1	A	0.38	0/3296	0.61	1/4473 (0.0%)
1	B	0.37	0/3296	0.61	1/4473 (0.0%)
All	All	0.37	0/6592	0.61	2/8946 (0.0%)

There are no bond length outliers.

All (2) bond angle outliers are listed below:

Mol	Chain	Res	Type	Atoms	Z	Observed(°)	Ideal(°)
1	A	296	THR	N-CA-C	-5.18	97.01	111.00
1	B	296	THR	N-CA-C	-5.13	97.14	111.00

There are no chirality outliers.

There are no planarity outliers.

5.2 Too-close contacts [i](#)

In the following table, the Non-H and H(model) columns list the number of non-hydrogen atoms and hydrogen atoms in the chain respectively. The H(added) column lists the number of hydrogen atoms added and optimized by MolProbity. The Clashes column lists the number of clashes within the asymmetric unit, whereas Symm-Clashes lists symmetry related clashes.

Mol	Chain	Non-H	H(model)	H(added)	Clashes	Symm-Clashes
1	A	3210	0	3167	48	0
1	B	3210	0	3167	34	0
2	A	63	0	58	1	0
2	B	63	0	58	1	0
3	A	43	0	52	1	0
3	B	43	0	52	2	0
4	A	65	0	0	0	0

Continued on next page...

Continued from previous page...

Mol	Chain	Non-H	H(model)	H(added)	Clashes	Symm-Clashes
4	B	58	0	0	0	0
All	All	6755	0	6554	79	0

The all-atom clashscore is defined as the number of clashes found per 1000 atoms (including hydrogen atoms). The all-atom clashscore for this structure is 6.

All (79) close contacts within the same asymmetric unit are listed below, sorted by their clash magnitude.

Atom-1	Atom-2	Interatomic distance (Å)	Clash overlap (Å)
1:A:344:ASN:HD22	1:A:347:HIS:H	1.21	0.84
1:B:180:HIS:HD2	1:B:182:LYS:H	1.30	0.79
1:A:216:LEU:HD23	1:A:217:PRO:HD2	1.65	0.78
1:A:248:THR:HG23	1:A:251:SER:H	1.49	0.77
1:A:344:ASN:ND2	1:A:347:HIS:H	1.84	0.76
1:A:180:HIS:HD2	1:A:182:LYS:H	1.34	0.75
1:A:72:VAL:HG23	1:B:202:LYS:HE2	1.72	0.71
1:B:106:ASN:ND2	1:B:181:LYS:H	1.90	0.69
1:A:286:GLN:HB3	1:A:292:VAL:HG21	1.76	0.67
1:B:106:ASN:HD22	1:B:181:LYS:H	1.44	0.64
1:B:215:ILE:HG13	1:B:216:LEU:HD22	1.80	0.63
1:B:195:GLU:OE1	1:B:199:ARG:HD2	2.02	0.59
1:A:324:GLU:CD	1:A:324:GLU:H	2.05	0.59
1:A:220:LEU:HD21	1:A:419:LEU:HD12	1.85	0.57
1:A:211:THR:HG23	1:A:450:LEU:HD22	1.86	0.57
1:B:409:GLY:HA3	3:B:1502:MIM:HZY1	1.86	0.57
1:A:378:ASP:O	1:A:382:THR:HG23	2.05	0.56
1:B:286:GLN:HB3	1:B:292:VAL:HG11	1.88	0.56
1:B:285:TYR:O	1:B:288:ARG:HD2	2.05	0.55
1:A:180:HIS:CD2	1:A:182:LYS:H	2.21	0.55
1:B:63:ILE:HD12	1:B:64:ASP:N	2.22	0.54
1:A:187:ARG:HH22	2:A:501:MYA:P3X	2.30	0.54
1:A:275:VAL:HG23	1:A:276:SER:H	1.72	0.54
1:B:324:GLU:CD	1:B:324:GLU:H	2.11	0.53
1:A:434:LYS:NZ	1:A:434:LYS:HB2	2.23	0.53
1:B:141:VAL:HB	1:B:151:ALA:HB3	1.90	0.53
1:A:317:LYS:HE2	1:A:386:PHE:CZ	2.44	0.53
1:A:141:VAL:HB	1:A:151:ALA:HB3	1.91	0.52
1:A:72:VAL:HG11	1:B:201:ASN:HB3	1.91	0.52
1:A:363:PHE:HA	1:A:368:TYR:CD2	2.44	0.52
1:B:216:LEU:H	1:B:216:LEU:HD22	1.74	0.52
1:A:409:GLY:HA3	3:A:502:MIM:HZY1	1.92	0.52

Continued on next page...

Continued from previous page...

Atom-1	Atom-2	Interatomic distance (Å)	Clash overlap (Å)
1:A:421:ASN:HA	1:B:63:ILE:HD11	1.92	0.51
1:A:344:ASN:HD21	1:A:346:GLN:HG2	1.73	0.51
1:A:189:ALA:HB3	1:A:190:PRO:HD3	1.94	0.50
1:A:399:ASN:HA	1:A:402:PHE:CE1	2.48	0.49
1:A:275:VAL:HG23	1:A:276:SER:N	2.27	0.49
1:B:208:ALA:HB2	2:B:1501:MYA:HEM	1.95	0.49
1:B:409:GLY:HA3	3:B:1502:MIM:CZY	2.44	0.48
1:A:344:ASN:HD21	1:A:346:GLN:CG	2.25	0.48
1:A:310:ASN:N	1:A:310:ASN:HD22	2.11	0.48
1:A:344:ASN:HD22	1:A:347:HIS:N	2.01	0.48
1:B:182:LYS:C	1:B:183:LEU:HD12	2.34	0.48
1:A:399:ASN:O	1:A:403:LEU:HG	2.14	0.47
1:B:189:ALA:HB3	1:B:190:PRO:HD3	1.95	0.47
1:B:363:PHE:HA	1:B:368:TYR:CD2	2.50	0.47
1:A:365:LYS:HB3	1:A:366:PRO:HD2	1.97	0.47
1:B:249:LYS:O	1:B:253:VAL:HG23	2.15	0.46
1:B:439:VAL:HG23	1:B:439:VAL:O	2.15	0.46
1:B:171:SER:HB2	1:B:207:GLN:O	2.16	0.46
1:A:69:PRO:O	1:A:72:VAL:HG22	2.16	0.46
1:B:288:ARG:HG3	1:B:288:ARG:HH21	1.82	0.45
1:B:253:VAL:O	1:B:257:THR:HG23	2.16	0.45
1:A:330:ASP:OD2	1:A:371:ARG:HD3	2.16	0.45
1:A:214:SER:HA	1:A:416:ASN:ND2	2.31	0.45
1:B:399:ASN:HA	1:B:402:PHE:CE2	2.51	0.45
1:A:231:ASN:C	1:A:231:ASN:HD22	2.19	0.45
1:A:150:VAL:HB	1:A:183:LEU:HD12	1.99	0.45
1:A:307:HIS:O	1:A:309:GLU:N	2.50	0.44
1:A:272:GLY:O	1:A:275:VAL:HG22	2.18	0.44
1:B:370:LYS:O	1:B:374:GLU:HG3	2.18	0.44
1:A:134:ARG:HH21	1:A:134:ARG:HB3	1.83	0.43
1:A:344:ASN:ND2	1:A:347:HIS:N	2.61	0.43
1:A:346:GLN:HG3	1:A:347:HIS:ND1	2.34	0.43
1:A:317:LYS:HE2	1:A:386:PHE:CE1	2.54	0.42
1:A:322:GLU:HA	1:A:327:ILE:O	2.19	0.42
1:B:288:ARG:NH2	1:B:398:ASP:OD2	2.52	0.42
1:A:122:GLU:OE1	1:A:314:ASN:HB2	2.20	0.42
1:A:309:GLU:C	1:A:311:SER:H	2.22	0.42
1:B:183:LEU:N	1:B:183:LEU:HD12	2.34	0.42
1:A:94:LEU:O	1:A:98:GLU:HG3	2.20	0.42
1:B:333:SER:OG	1:B:356:PHE:HB3	2.20	0.42
1:B:291:ILE:HG23	1:B:291:ILE:O	2.21	0.41

Continued on next page...

Continued from previous page...

Atom-1	Atom-2	Interatomic distance (Å)	Clash overlap (Å)
1:A:450:LEU:N	1:A:450:LEU:HD12	2.36	0.41
1:A:89:ASP:OD2	1:A:135:LYS:HE3	2.20	0.41
1:B:430:GLY:O	1:B:439:VAL:HG22	2.21	0.40
1:B:399:ASN:O	1:B:403:LEU:HG	2.21	0.40
1:A:307:HIS:O	1:A:309:GLU:HG3	2.22	0.40
1:B:113:ALA:O	1:B:342:LEU:HD12	2.21	0.40

There are no symmetry-related clashes.

5.3 Torsion angles [i](#)

5.3.1 Protein backbone [i](#)

In the following table, the Percentiles column shows the percent Ramachandran outliers of the chain as a percentile score with respect to all X-ray entries followed by that with respect to entries of similar resolution.

The Analysed column shows the number of residues for which the backbone conformation was analysed, and the total number of residues.

Mol	Chain	Analysed	Favoured	Allowed	Outliers	Percentiles	
1	A	390/392 (100%)	371 (95%)	15 (4%)	4 (1%)	19	21
1	B	390/392 (100%)	379 (97%)	11 (3%)	0	100	100
All	All	780/784 (100%)	750 (96%)	26 (3%)	4 (0%)	34	41

All (4) Ramachandran outliers are listed below:

Mol	Chain	Res	Type
1	A	308	ASP
1	A	309	GLU
1	A	215	ILE
1	A	216	LEU

5.3.2 Protein sidechains [i](#)

In the following table, the Percentiles column shows the percent sidechain outliers of the chain as a percentile score with respect to all X-ray entries followed by that with respect to entries of similar resolution.

The Analysed column shows the number of residues for which the sidechain conformation was

analysed, and the total number of residues.

Mol	Chain	Analysed	Rotameric	Outliers	Percentiles	
1	A	360/360 (100%)	349 (97%)	11 (3%)	47	64
1	B	360/360 (100%)	351 (98%)	9 (2%)	55	73
All	All	720/720 (100%)	700 (97%)	20 (3%)	51	68

All (20) residues with a non-rotameric sidechain are listed below:

Mol	Chain	Res	Type
1	A	60	GLU
1	A	134	ARG
1	A	216	LEU
1	A	224	ARG
1	A	228	ARG
1	A	231	ASN
1	A	292	VAL
1	A	331	TYR
1	A	339	PHE
1	A	356	PHE
1	A	371	ARG
1	B	66	LEU
1	B	184	ARG
1	B	215	ILE
1	B	263	LYS
1	B	268	ARG
1	B	288	ARG
1	B	331	TYR
1	B	339	PHE
1	B	356	PHE

Some sidechains can be flipped to improve hydrogen bonding and reduce clashes. All (11) such sidechains are listed below:

Mol	Chain	Res	Type
1	A	74	ASN
1	A	180	HIS
1	A	231	ASN
1	A	236	HIS
1	A	310	ASN
1	A	344	ASN
1	B	106	ASN
1	B	180	HIS

Continued on next page...

Continued from previous page...

Mol	Chain	Res	Type
1	B	201	ASN
1	B	416	ASN
1	B	442	GLN

5.3.3 RNA ⓘ

There are no RNA molecules in this entry.

5.4 Non-standard residues in protein, DNA, RNA chains ⓘ

There are no non-standard protein/DNA/RNA residues in this entry.

5.5 Carbohydrates ⓘ

There are no carbohydrates in this entry.

5.6 Ligand geometry ⓘ

4 ligands are modelled in this entry.

In the following table, the Counts columns list the number of bonds (or angles) for which Mogul statistics could be retrieved, the number of bonds (or angles) that are observed in the model and the number of bonds (or angles) that are defined in the chemical component dictionary. The Link column lists molecule types, if any, to which the group is linked. The Z score for a bond length (or angle) is the number of standard deviations the observed value is removed from the expected value. A bond length (or angle) with $|Z| > 2$ is considered an outlier worth inspection. RMSZ is the root-mean-square of all Z scores of the bond lengths (or angles).

Mol	Type	Chain	Res	Link	Bond lengths			Bond angles		
					Counts	RMSZ	# Z > 2	Counts	RMSZ	# Z > 2
2	MYA	A	501	-	53,65,65	1.00	1 (1%)	65,91,91	1.65	12 (18%)
3	MIM	A	502	-	44,45,45	0.87	1 (2%)	51,57,57	0.90	2 (3%)
2	MYA	B	1501	-	53,65,65	0.94	1 (1%)	65,91,91	1.58	8 (12%)
3	MIM	B	1502	-	44,45,45	0.77	0	51,57,57	1.43	6 (11%)

In the following table, the Chirals column lists the number of chiral outliers, the number of chiral centers analysed, the number of these observed in the model and the number defined in the chemical component dictionary. Similar counts are reported in the Torsion and Rings columns. '-' means no outliers of that kind were identified.

Mol	Type	Chain	Res	Link	Chirals	Torsions	Rings
2	MYA	A	501	-	1/1/12/14	0/59/80/80	0/3/3/3
3	MIM	A	502	-	-	0/40/48/48	0/3/3/3
2	MYA	B	1501	-	-	0/59/80/80	0/3/3/3
3	MIM	B	1502	-	-	0/40/48/48	0/3/3/3

All (3) bond length outliers are listed below:

Mol	Chain	Res	Type	Atoms	Z	Observed(Å)	Ideal(Å)
3	A	502	MIM	CB-NS	-2.04	1.29	1.34
2	B	1501	MYA	C5A-C4A	3.10	1.47	1.40
2	A	501	MYA	C5A-C4A	3.42	1.48	1.40

All (28) bond angle outliers are listed below:

Mol	Chain	Res	Type	Atoms	Z	Observed(°)	Ideal(°)
2	B	1501	MYA	N3A-C2A-N1A	-5.54	124.65	128.89
3	B	1502	MIM	CBK-CAK-CK	-4.35	99.72	110.32
2	A	501	MYA	N3A-C2A-N1A	-4.30	125.60	128.89
2	A	501	MYA	P2A-O3A-P1A	-4.09	121.24	132.73
2	B	1501	MYA	C2X-C1X-N9A	-3.33	109.21	114.29
2	A	501	MYA	C13-C11-C12	-3.32	104.19	108.50
2	A	501	MYA	C2-S1-C2M	-3.21	95.77	100.40
2	A	501	MYA	C2X-C1X-N9A	-3.15	109.48	114.29
2	A	501	MYA	C4X-O4X-C1X	-3.06	106.36	109.72
2	B	1501	MYA	C4M-C3M-C2M	-2.97	105.42	113.97
3	B	1502	MIM	C8B-C9B-NAB	-2.94	106.20	112.31
2	B	1501	MYA	P3X-O3X-C3X	-2.92	114.56	121.56
3	B	1502	MIM	C9B-NAB-CEB	-2.51	119.84	124.31
2	A	501	MYA	C4M-C3M-C2M	-2.27	107.44	113.97
3	A	502	MIM	CEB-NAB-CBB	-2.26	106.48	108.60
2	A	501	MYA	O5-C5-C6	-2.21	118.17	121.98
2	B	1501	MYA	P2A-O3A-P1A	-2.20	126.55	132.73
3	B	1502	MIM	CAB-C0B-C5B	-2.18	117.59	120.86
3	B	1502	MIM	C6B-C3B-C4B	-2.07	116.00	121.25
3	B	1502	MIM	OS-CS-CAS	-2.05	115.83	120.36
2	B	1501	MYA	C2A-N1A-C6A	2.06	122.45	118.77
2	A	501	MYA	C4A-C5A-N7A	2.10	111.41	109.48
3	A	502	MIM	CBK-CAK-NK	2.18	115.02	110.87
2	B	1501	MYA	C4A-C5A-N7A	2.25	111.55	109.48
2	A	501	MYA	C3X-C2X-C1X	2.46	105.89	99.98
2	A	501	MYA	C14-C11-C12	3.37	112.88	108.50
2	A	501	MYA	O2M-C2M-C3M	5.41	118.95	109.05
2	B	1501	MYA	O2M-C2M-C3M	6.85	121.59	109.05

All (1) chirality outliers are listed below:

Mol	Chain	Res	Type	Atom
2	A	501	MYA	C4X

There are no torsion outliers.

There are no ring outliers.

4 monomers are involved in 5 short contacts:

Mol	Chain	Res	Type	Clashes	Symm-Clashes
2	A	501	MYA	1	0
3	A	502	MIM	1	0
2	B	1501	MYA	1	0
3	B	1502	MIM	2	0

5.7 Other polymers [i](#)

There are no such residues in this entry.

5.8 Polymer linkage issues [i](#)

There are no chain breaks in this entry.

6 Fit of model and data ⓘ

6.1 Protein, DNA and RNA chains ⓘ

EDS was not executed - this section will therefore be empty.

6.2 Non-standard residues in protein, DNA, RNA chains ⓘ

EDS was not executed - this section will therefore be empty.

6.3 Carbohydrates ⓘ

EDS was not executed - this section will therefore be empty.

6.4 Ligands ⓘ

EDS was not executed - this section will therefore be empty.

6.5 Other polymers ⓘ

EDS was not executed - this section will therefore be empty.