



Full wwPDB X-ray Structure Validation Report ⓘ

Jan 31, 2016 – 08:09 PM GMT

PDB ID : 1J0N
Title : Crystal Structure of Bacillus sp. GL1 Xanthan Lyase that Acts on Side Chains of Xanthan
Authors : Hashimoto, W.; Nankai, H.; Mikami, B.; Murata, K.
Deposited on : 2002-11-19
Resolution : 2.40 Å(reported)

This is a Full wwPDB X-ray Structure Validation Report for a publicly released PDB entry.
We welcome your comments at validation@mail.wwpdb.org
A user guide is available at
<http://wwpdb.org/validation/2016/XrayValidationReportHelp>
with specific help available everywhere you see the ⓘ symbol.

The following versions of software and data (see [references ⓘ](#)) were used in the production of this report:

MolProbity : 4.02b-467
Mogul : 1.7 (RC4), CSD as536be (2015)
Xtriage (Phenix) : **NOT EXECUTED**
EDS : **NOT EXECUTED**
Percentile statistics : 20151230.v01 (using entries in the PDB archive December 30th 2015)
Ideal geometry (proteins) : Engh & Huber (2001)
Ideal geometry (DNA, RNA) : Parkinson et al. (1996)
Validation Pipeline (wwPDB-VP) : trunk26865

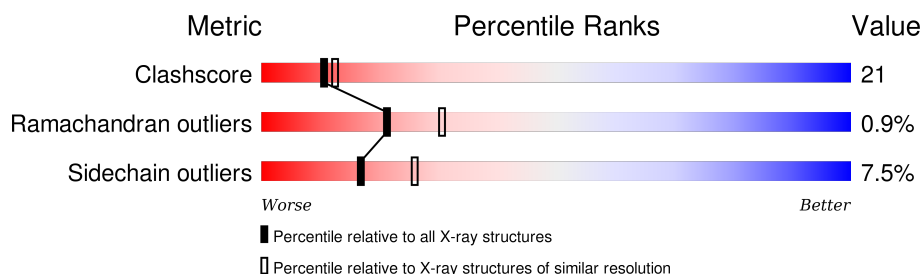
1 Overall quality at a glance

The following experimental techniques were used to determine the structure:

X-RAY DIFFRACTION

The reported resolution of this entry is 2.40 Å.

Percentile scores (ranging between 0-100) for global validation metrics of the entry are shown in the following graphic. The table shows the number of entries on which the scores are based.



Metric	Whole archive (#Entries)	Similar resolution (#Entries, resolution range(Å))
Clashscore	102246	3407 (2.40-2.40)
Ramachandran outliers	100387	3351 (2.40-2.40)
Sidechain outliers	100360	3352 (2.40-2.40)

The table below summarises the geometric issues observed across the polymeric chains and their fit to the electron density. The red, orange, yellow and green segments on the lower bar indicate the fraction of residues that contain outliers for ≥ 3 , 2, 1 and 0 types of geometric quality criteria. A grey segment represents the fraction of residues that are not modelled. The numeric value for each fraction is indicated below the corresponding segment, with a dot representing fractions $\leq 5\%$. The upper red bar (where present) indicates the fraction of residues that have poor fit to the electron density. The numeric value is given above the bar.

Note EDS was not executed.

Mol	Chain	Length	Quality of chain
1	A	752	<div> <div>66%</div> <div>30%</div> <div>.</div> </div>

The following table lists non-polymeric compounds, carbohydrate monomers and non-standard residues in protein, DNA, RNA chains that are outliers for geometric or electron-density-fit criteria:

Mol	Type	Chain	Res	Chirality	Geometry	Clashes	Electron density
2	CEG	A	780	X	-	-	-

2 Entry composition [i](#)

There are 4 unique types of molecules in this entry. The entry contains 5975 atoms, of which 0 are hydrogens and 0 are deuteriums.

In the tables below, the ZeroOcc column contains the number of atoms modelled with zero occupancy, the AltConf column contains the number of residues with at least one atom in alternate conformation and the Trace column contains the number of residues modelled with at most 2 atoms.

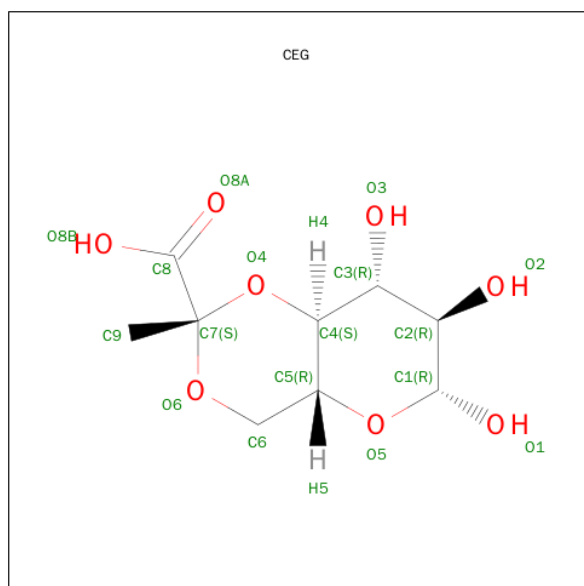
- Molecule 1 is a protein called XANTHAN LYASE.

Mol	Chain	Residues	Atoms					ZeroOcc	AltConf	Trace
			Total	C	N	O	S			
1	A	752	5697	3585	970	1128	14	0	0	0

There is a discrepancy between the modelled and reference sequences:

Chain	Residue	Modelled	Actual	Comment	Reference
A	161	THR	ILE	CONFLICT	UNP Q9AQS0

- Molecule 2 is SUGAR (4,6-O-(1-CARBOXYETHYLIDENE)-BETA-D-GLUCOSE) (three-letter code: CEG) (formula: C₉H₁₄O₈).



Mol	Chain	Residues	Atoms			ZeroOcc	AltConf
2	A	1	Total	C	O	0	0
			17	9	8		

- Molecule 3 is CALCIUM ION (three-letter code: CA) (formula: Ca).

Mol	Chain	Residues	Atoms		ZeroOcc	AltConf
3	A	1	Total 1	Ca 1	0	0

- Molecule 4 is water.

Mol	Chain	Residues	Atoms		ZeroOcc	AltConf
4	A	260	Total 260	O 260	0	0

4 Data and refinement statistics

Xtriage (Phenix) and EDS were not executed - this section will therefore be incomplete.

Property	Value	Source
Space group	P 21 21 21	Depositor
Cell constants a, b, c, α , β , γ	54.36 Å 91.31 Å 159.26 Å 90.00° 90.00° 90.00°	Depositor
Resolution (Å)	27.48 – 2.40	Depositor
% Data completeness (in resolution range)	82.6 (27.48-2.40)	Depositor
R_{merge}	(Not available)	Depositor
R_{sym}	0.09	Depositor
Refinement program	CNS 1.0	Depositor
R, R_{free}	0.169 , 0.241	Depositor
Estimated twinning fraction	No twinning to report.	Xtriage
Total number of atoms	5975	wwPDB-VP
Average B, all atoms (Å ²)	20.0	wwPDB-VP

5 Model quality [i](#)

5.1 Standard geometry [i](#)

Bond lengths and bond angles in the following residue types are not validated in this section: CEG, CA

The Z score for a bond length (or angle) is the number of standard deviations the observed value is removed from the expected value. A bond length (or angle) with $|Z| > 5$ is considered an outlier worth inspection. RMSZ is the root-mean-square of all Z scores of the bond lengths (or angles).

Mol	Chain	Bond lengths		Bond angles	
		RMSZ	$\# Z > 5$	RMSZ	$\# Z > 5$
1	A	0.34	0/5829	0.62	0/7957

There are no bond length outliers.

There are no bond angle outliers.

There are no chirality outliers.

There are no planarity outliers.

5.2 Too-close contacts [i](#)

In the following table, the Non-H and H(model) columns list the number of non-hydrogen atoms and hydrogen atoms in the chain respectively. The H(added) column lists the number of hydrogen atoms added and optimized by MolProbity. The Clashes column lists the number of clashes within the asymmetric unit, whereas Symm-Clashes lists symmetry related clashes.

Mol	Chain	Non-H	H(model)	H(added)	Clashes	Symm-Clashes
1	A	5697	0	5477	238	0
2	A	17	0	10	0	0
3	A	1	0	0	0	0
4	A	260	0	0	18	0
All	All	5975	0	5487	238	0

The all-atom clashscore is defined as the number of clashes found per 1000 atoms (including hydrogen atoms). The all-atom clashscore for this structure is 21.

All (238) close contacts within the same asymmetric unit are listed below, sorted by their clash magnitude.

Atom-1	Atom-2	Interatomic distance (Å)	Clash overlap (Å)
1:A:610:ASN:HD21	1:A:612:ARG:HD3	1.23	1.03
1:A:178:MET:HE1	1:A:181:ILE:HD12	1.44	0.97
1:A:553:ASN:HD21	1:A:571:ASN:H	1.09	0.97
1:A:178:MET:HE2	1:A:207:ARG:HB2	1.51	0.92
1:A:610:ASN:O	1:A:615:THR:HG21	1.76	0.86
1:A:504:ASN:HD22	1:A:528:THR:H	1.19	0.86
1:A:108:THR:HG21	1:A:164:LEU:HD22	1.57	0.85
1:A:447:GLN:HE22	1:A:541:LYS:H	1.23	0.84
1:A:610:ASN:ND2	1:A:612:ARG:HD3	1.93	0.82
1:A:612:ARG:O	1:A:615:THR:HG22	1.80	0.81
1:A:41:THR:HG22	1:A:43:GLY:H	1.47	0.80
1:A:207:ARG:HA	1:A:210:ILE:HD11	1.64	0.79
1:A:178:MET:CE	1:A:181:ILE:HD12	2.13	0.79
1:A:169:ILE:HG21	1:A:174:MET:HG2	1.67	0.76
1:A:304:ASP:HA	1:A:307:ARG:HD3	1.65	0.76
1:A:260:LEU:HD22	1:A:328:SER:HB3	1.68	0.75
1:A:504:ASN:HD22	1:A:528:THR:N	1.84	0.74
1:A:665:VAL:HG12	1:A:666:VAL:HG13	1.69	0.73
1:A:700:ASN:H	1:A:700:ASN:HD22	1.36	0.72
1:A:191(B):GLY:H	1:A:200:GLN:HE22	1.38	0.72
1:A:46:LEU:HD22	1:A:53:ILE:HG21	1.72	0.72
1:A:525:ILE:HB	1:A:638:ALA:HB3	1.71	0.72
1:A:46:LEU:HD22	1:A:53:ILE:CG2	2.21	0.71
1:A:135:SER:O	1:A:140:ARG:HD2	1.90	0.71
1:A:535:THR:OG1	1:A:631:HIS:HE1	1.74	0.71
1:A:190:ILE:HD11	1:A:204:VAL:HG11	1.72	0.70
1:A:158:LEU:HD11	1:A:177:TYR:HB3	1.72	0.70
1:A:105:LEU:O	1:A:109:THR:HG22	1.92	0.69
1:A:132:TYR:O	1:A:137:ASN:HB3	1.93	0.69
1:A:574:HIS:HD2	4:A:929:HOH:O	1.75	0.68
1:A:100:LEU:HA	1:A:103:MET:HE3	1.76	0.68
1:A:94:ASN:HA	1:A:154:ILE:HD13	1.75	0.68
1:A:700:ASN:HD21	1:A:731:ALA:H	1.39	0.68
1:A:195:ALA:H	1:A:245:GLN:HE22	1.42	0.67
1:A:100:LEU:HD23	1:A:103:MET:CE	2.24	0.67
1:A:307:ARG:NH2	1:A:316:ALA:O	2.27	0.67
1:A:30:ASP:O	1:A:34:ILE:HG12	1.96	0.66
1:A:100:LEU:HD23	1:A:103:MET:HE3	1.77	0.66
1:A:548:ASN:H	1:A:548:ASN:HD22	1.41	0.66
1:A:93:VAL:O	1:A:96:VAL:HG22	1.96	0.66
1:A:666:VAL:HG22	1:A:674:SER:HB3	1.77	0.66
1:A:498:LEU:HD23	1:A:499:SER:N	2.11	0.66

Continued on next page...

Continued from previous page...

Atom-1	Atom-2	Interatomic distance (Å)	Clash overlap (Å)
1:A:180:THR:HG21	4:A:832:HOH:O	1.95	0.66
1:A:294:ARG:HB3	1:A:295:PRO:HD3	1.77	0.65
1:A:338:ALA:HB3	1:A:339:PRO:HD3	1.79	0.64
1:A:133:VAL:HA	4:A:973:HOH:O	1.96	0.64
1:A:317:GLN:HE22	1:A:450:GLU:H	1.45	0.63
1:A:530:GLY:H	1:A:634:ASN:HD21	1.46	0.63
1:A:388:ASN:HD22	1:A:388:ASN:C	2.01	0.63
1:A:67:TYR:CD1	1:A:99:ARG:HD3	2.34	0.63
1:A:348:ALA:O	1:A:352:ILE:HG12	1.98	0.63
1:A:401:LEU:HD22	1:A:513:MET:HB3	1.81	0.63
1:A:605:THR:OG1	1:A:608:GLN:HG3	1.99	0.62
1:A:317:GLN:HE22	1:A:450:GLU:N	1.97	0.62
1:A:506:SER:HB3	4:A:1038:HOH:O	2.00	0.62
1:A:677:GLU:CD	1:A:679:LEU:HD23	2.20	0.62
1:A:191:LEU:HD13	1:A:200:GLN:NE2	2.14	0.61
1:A:508:ARG:HG2	1:A:687:TRP:CD2	2.36	0.61
1:A:69:GLU:O	1:A:69:GLU:HG2	2.00	0.60
1:A:543:ASN:H	1:A:548:ASN:HD21	1.47	0.60
1:A:195:ALA:HA	1:A:259:VAL:HG22	1.84	0.60
1:A:46:LEU:CD2	1:A:53:ILE:HD12	2.31	0.60
1:A:508:ARG:HG2	1:A:687:TRP:CE2	2.36	0.60
1:A:213:ASP:OD1	1:A:215:VAL:HG12	2.01	0.60
1:A:191(B):GLY:H	1:A:200:GLN:NE2	1.99	0.60
1:A:74:SER:HB3	4:A:1061:HOH:O	2.02	0.60
1:A:390:TYR:CE1	1:A:513:MET:HG3	2.38	0.59
1:A:190:ILE:HD11	1:A:204:VAL:CG1	2.31	0.59
1:A:84:LEU:HD21	1:A:95:ALA:HB3	1.84	0.59
1:A:323:HIS:HE1	1:A:355:ASP:OD1	1.85	0.59
1:A:349:LYS:HE3	1:A:376:VAL:HA	1.85	0.59
1:A:245:GLN:HG2	1:A:255:TYR:CG	2.37	0.59
1:A:96:VAL:HG21	1:A:131:LEU:HD21	1.84	0.58
1:A:323:HIS:HD2	1:A:363:ASP:OD2	1.86	0.58
1:A:461:ILE:HD12	1:A:461:ILE:N	2.17	0.58
1:A:94:ASN:HA	1:A:154:ILE:CD1	2.33	0.58
1:A:207:ARG:HA	1:A:210:ILE:CD1	2.34	0.57
1:A:253:GLY:H	1:A:306:VAL:HG13	1.69	0.57
1:A:165:LEU:O	1:A:169:ILE:HG13	2.05	0.57
1:A:67:TYR:CG	1:A:99:ARG:HD3	2.39	0.57
1:A:553:ASN:HD21	1:A:571:ASN:N	1.92	0.57
1:A:169:ILE:CG2	1:A:174:MET:HG2	2.35	0.56
1:A:125:LEU:HD21	1:A:169:ILE:HG12	1.88	0.56

Continued on next page...

Continued from previous page...

Atom-1	Atom-2	Interatomic distance (Å)	Clash overlap (Å)
1:A:504:ASN:ND2	1:A:527:SER:HA	2.20	0.56
1:A:649:THR:H	1:A:652:GLN:NE2	2.03	0.56
1:A:195:ALA:H	1:A:245:GLN:NE2	2.03	0.55
1:A:305:MET:O	1:A:398:ARG:NH1	2.39	0.55
1:A:531:ILE:O	1:A:533:ILE:HD13	2.07	0.55
1:A:664:ILE:N	1:A:664:ILE:HD12	2.22	0.55
1:A:215:VAL:HG13	1:A:216:LYS:N	2.21	0.55
1:A:39:LEU:O	1:A:39:LEU:HD23	2.07	0.55
1:A:530:GLY:H	1:A:634:ASN:ND2	2.04	0.55
1:A:462:PRO:HB3	1:A:538:ASP:HA	1.89	0.55
1:A:56:ARG:HG3	1:A:56:ARG:HH11	1.72	0.55
1:A:211:VAL:O	1:A:211:VAL:HG12	2.06	0.54
1:A:412:LEU:N	1:A:412:LEU:HD22	2.23	0.54
1:A:191:LEU:HD13	1:A:200:GLN:CD	2.28	0.54
1:A:390:TYR:CE2	1:A:492:GLY:HA3	2.42	0.54
1:A:84:LEU:CD2	1:A:95:ALA:HB3	2.38	0.54
1:A:352:ILE:HD12	1:A:360:PHE:CG	2.43	0.53
1:A:178:MET:CE	1:A:207:ARG:HB2	2.32	0.53
1:A:101:ARG:NH1	1:A:160:ASP:OD2	2.42	0.53
1:A:149:HIS:O	1:A:154:ILE:HG12	2.09	0.53
1:A:542:LEU:HB3	1:A:548:ASN:ND2	2.24	0.53
1:A:129:ASP:OD2	1:A:173:ARG:NH1	2.42	0.52
1:A:574:HIS:HE1	1:A:648:LYS:O	1.92	0.52
1:A:504:ASN:ND2	1:A:528:THR:N	2.54	0.52
1:A:511:TRP:C	1:A:513:MET:HE2	2.30	0.52
1:A:41:THR:CG2	1:A:43:GLY:H	2.20	0.52
1:A:631:HIS:HD2	4:A:1117:HOH:O	1.92	0.52
1:A:206:VAL:O	1:A:210:ILE:HG12	2.11	0.51
1:A:664:ILE:H	1:A:664:ILE:HD12	1.75	0.51
1:A:668:THR:OG1	1:A:669:SER:N	2.44	0.51
1:A:200:GLN:O	1:A:204:VAL:HG12	2.11	0.51
1:A:730:ILE:HD13	1:A:762:VAL:HG11	1.92	0.51
1:A:498:LEU:HD21	1:A:500:TYR:CZ	2.46	0.51
1:A:92:ASN:O	1:A:96:VAL:HG13	2.11	0.50
1:A:673:GLN:HE21	1:A:687:TRP:HE1	1.58	0.50
1:A:730:ILE:HG22	1:A:732:ILE:HG12	1.92	0.50
1:A:137:ASN:ND2	1:A:139:THR:H	2.10	0.50
1:A:326:VAL:HG21	1:A:351:VAL:HG11	1.92	0.50
1:A:514:PHE:HB2	1:A:517:GLU:OE1	2.11	0.50
1:A:164:LEU:HD21	4:A:1058:HOH:O	2.12	0.49
1:A:39:LEU:C	1:A:39:LEU:HD23	2.32	0.49

Continued on next page...

Continued from previous page...

Atom-1	Atom-2	Interatomic distance (Å)	Clash overlap (Å)
1:A:191:LEU:HD13	1:A:200:GLN:OE1	2.12	0.49
1:A:705:VAL:HG22	1:A:719:VAL:HG13	1.93	0.49
1:A:60:LEU:HG	1:A:106:ALA:HB2	1.95	0.49
1:A:481:TRP:CZ2	1:A:722:PRO:HG3	2.48	0.49
1:A:80:ILE:HD12	1:A:127:ALA:HB1	1.94	0.49
1:A:154:ILE:N	1:A:155:PRO:HD2	2.27	0.49
1:A:700:ASN:HD22	1:A:700:ASN:N	2.02	0.48
1:A:700:ASN:ND2	1:A:731:ALA:H	2.10	0.48
1:A:129:ASP:OD1	1:A:173:ARG:HD2	2.12	0.48
1:A:46:LEU:HD21	1:A:53:ILE:HD12	1.94	0.48
1:A:207:ARG:HA	1:A:210:ILE:CG1	2.44	0.48
1:A:548:ASN:H	1:A:548:ASN:ND2	2.11	0.48
1:A:500:TYR:CE2	1:A:505:LEU:HD23	2.49	0.48
1:A:165:LEU:N	1:A:165:LEU:HD22	2.29	0.48
1:A:317:GLN:NE2	1:A:449:SER:HA	2.29	0.48
1:A:598:LYS:NZ	4:A:1001:HOH:O	2.47	0.47
1:A:154:ILE:HB	1:A:155:PRO:CD	2.44	0.47
1:A:207:ARG:HG3	4:A:1078:HOH:O	2.14	0.47
1:A:170:SER:HA	4:A:1076:HOH:O	2.13	0.47
1:A:142:ARG:HD3	4:A:1079:HOH:O	2.14	0.47
1:A:159:ASN:HB3	1:A:206:VAL:HG11	1.97	0.47
1:A:530:GLY:N	1:A:634:ASN:HD21	2.11	0.47
1:A:461:ILE:O	1:A:536:VAL:HG11	2.14	0.47
1:A:288:TRP:O	1:A:292:ALA:HB3	2.14	0.47
1:A:296:LEU:O	1:A:303:MET:HG3	2.15	0.47
1:A:458:ALA:O	1:A:461:ILE:HD11	2.15	0.47
1:A:199:TRP:O	1:A:202:ILE:HG22	2.15	0.47
1:A:40:LEU:HB2	4:A:1058:HOH:O	2.15	0.46
1:A:561:LEU:HD23	1:A:599:ARG:HG2	1.98	0.46
1:A:46:LEU:HD22	1:A:53:ILE:HG23	1.94	0.46
1:A:141:SER:HA	4:A:1070:HOH:O	2.14	0.46
1:A:289:ILE:HD12	1:A:329:ILE:HG12	1.98	0.46
1:A:542:LEU:HD21	1:A:625:GLU:HB2	1.98	0.45
1:A:498:LEU:HD23	1:A:499:SER:H	1.79	0.45
1:A:52:ASP:OD1	1:A:373:LYS:NZ	2.49	0.45
1:A:467:ALA:HA	1:A:533:ILE:HD12	1.98	0.45
1:A:41:THR:HG22	1:A:43:GLY:N	2.23	0.45
1:A:349:LYS:HE2	4:A:1098:HOH:O	2.16	0.45
1:A:649:THR:H	1:A:652:GLN:HE21	1.63	0.45
1:A:178:MET:HG2	1:A:211:VAL:CG2	2.47	0.45
1:A:191:LEU:HD13	1:A:200:GLN:HE22	1.80	0.45

Continued on next page...

Continued from previous page...

Atom-1	Atom-2	Interatomic distance (Å)	Clash overlap (Å)
1:A:607:LYS:HD2	1:A:615:THR:HG23	1.99	0.45
1:A:50:ASP:HB3	1:A:53:ILE:CG1	2.47	0.45
1:A:678:THR:OG1	1:A:679:LEU:HD22	2.17	0.45
1:A:249:PHE:CE2	1:A:418:SER:HB2	2.52	0.45
1:A:469(A):THR:HG21	1:A:531:ILE:HD13	1.99	0.44
1:A:73:LEU:HD22	1:A:73:LEU:N	2.33	0.44
1:A:649:THR:HB	4:A:1127:HOH:O	2.16	0.44
1:A:264:ALA:HB1	1:A:332:LEU:HD13	1.99	0.44
1:A:304:ASP:HA	1:A:307:ARG:CD	2.42	0.44
1:A:97:TYR:CD1	1:A:154:ILE:HG23	2.52	0.44
1:A:133:VAL:HG22	1:A:134:ASN:HD22	1.83	0.44
1:A:526:SER:HA	1:A:635:PRO:O	2.18	0.44
1:A:47:ASP:OD2	1:A:49:ALA:HB3	2.18	0.44
1:A:160:ASP:O	1:A:164:LEU:HG	2.17	0.44
1:A:648:LYS:HA	1:A:652:GLN:NE2	2.32	0.44
1:A:461:ILE:O	1:A:536:VAL:CG1	2.66	0.44
1:A:302:MET:HE3	1:A:306:VAL:HG11	1.99	0.44
1:A:97:TYR:HE2	1:A:158:LEU:HD23	1.82	0.44
1:A:700:ASN:H	1:A:700:ASN:ND2	2.10	0.44
1:A:178:MET:HE3	1:A:178:MET:HA	1.99	0.43
1:A:442:ASN:HD22	1:A:442:ASN:C	2.20	0.43
1:A:370:ARG:HG2	1:A:370:ARG:HH11	1.82	0.43
1:A:84:LEU:HD22	1:A:92:ASN:O	2.17	0.43
1:A:56:ARG:NH1	1:A:56:ARG:HG3	2.32	0.43
1:A:435:ALA:O	1:A:464:THR:HG22	2.18	0.43
1:A:574:HIS:CD2	1:A:650:SER:HB3	2.54	0.43
1:A:127:ALA:O	1:A:131:LEU:HD12	2.18	0.43
1:A:514:PHE:CE1	1:A:662:ILE:HD11	2.52	0.43
1:A:389:LEU:C	1:A:389:LEU:CD1	2.86	0.43
1:A:100:LEU:HD23	1:A:103:MET:HE1	1.99	0.43
1:A:398:ARG:NH2	4:A:863:HOH:O	2.47	0.43
1:A:38:THR:O	1:A:42:GLY:N	2.47	0.43
1:A:65:ASN:HD22	1:A:114:LEU:HD21	1.82	0.43
1:A:97:TYR:CE2	1:A:158:LEU:HD23	2.54	0.43
1:A:574:HIS:CE1	1:A:648:LYS:O	2.70	0.43
1:A:41:THR:CG2	1:A:43:GLY:N	2.80	0.43
1:A:369:ILE:O	1:A:373:LYS:HB2	2.19	0.43
1:A:42:GLY:HA2	1:A:367:ASP:OD1	2.19	0.43
1:A:158:LEU:HB3	1:A:181:ILE:HD11	2.00	0.43
1:A:564:ALA:HA	1:A:598:LYS:HA	1.99	0.43
1:A:72:ASP:O	1:A:77:ARG:HD3	2.19	0.43

Continued on next page...

Continued from previous page...

Atom-1	Atom-2	Interatomic distance (Å)	Clash overlap (Å)
1:A:498:LEU:HD21	1:A:500:TYR:CE1	2.54	0.43
1:A:250:ALA:HB2	1:A:396:MET:HB2	2.01	0.43
1:A:120:LEU:O	1:A:124:ILE:HG13	2.19	0.42
1:A:458:ALA:O	1:A:461:ILE:CD1	2.67	0.42
1:A:264:ALA:CB	1:A:332:LEU:HD13	2.48	0.42
1:A:676:LYS:HG2	1:A:677:GLU:N	2.35	0.42
1:A:481:TRP:CH2	1:A:722:PRO:HG3	2.54	0.42
1:A:567:LEU:HB3	1:A:570:VAL:HG11	2.01	0.42
1:A:161:THR:HG22	1:A:165:LEU:HD23	2.02	0.42
1:A:304:ASP:OD1	1:A:307:ARG:NH1	2.48	0.42
1:A:144:ALA:HB3	1:A:150:TRP:CD1	2.54	0.42
1:A:170:SER:O	1:A:174:MET:HB2	2.19	0.42
1:A:129:ASP:OD2	1:A:173:ARG:HD2	2.19	0.42
1:A:194:GLY:H	1:A:227(B):GLY:HA3	1.84	0.42
1:A:253:GLY:N	1:A:306:VAL:HG13	2.33	0.42
1:A:60:LEU:HD23	1:A:109:THR:HG21	2.02	0.42
1:A:99:ARG:HG2	1:A:99:ARG:HH11	1.85	0.42
1:A:671:GLY:HA3	1:A:692:GLN:HE22	1.83	0.42
1:A:705:VAL:HG12	1:A:706:MET:N	2.36	0.41
1:A:518:ILE:HD12	1:A:518:ILE:N	2.34	0.41
1:A:390:TYR:OH	1:A:392:GLN:NE2	2.53	0.41
1:A:69:GLU:O	1:A:69:GLU:CG	2.66	0.41
1:A:500:TYR:HA	4:A:912:HOH:O	2.21	0.41
1:A:199:TRP:O	1:A:203:VAL:HG23	2.21	0.41
1:A:415:THR:HG23	1:A:479:SER:O	2.21	0.41
1:A:467:ALA:O	1:A:469(A):THR:HG23	2.20	0.41
1:A:270:LEU:O	1:A:276:SER:HA	2.20	0.41
1:A:522:GLY:HA3	1:A:640:TYR:CE2	2.56	0.40
1:A:177:TYR:O	1:A:181:ILE:HG13	2.21	0.40
1:A:46:LEU:HD11	1:A:366:THR:HB	2.04	0.40
1:A:196:ASN:O	1:A:200:GLN:HG3	2.21	0.40
1:A:713:GLU:HG2	4:A:1109:HOH:O	2.21	0.40

There are no symmetry-related clashes.

5.3 Torsion angles [i](#)

5.3.1 Protein backbone [i](#)

In the following table, the Percentiles column shows the percent Ramachandran outliers of the chain as a percentile score with respect to all X-ray entries followed by that with respect to entries

of similar resolution.

The Analysed column shows the number of residues for which the backbone conformation was analysed, and the total number of residues.

Mol	Chain	Analysed	Favoured	Allowed	Outliers	Percentiles	
1	A	750/752 (100%)	692 (92%)	51 (7%)	7 (1%)	21	30

All (7) Ramachandran outliers are listed below:

Mol	Chain	Res	Type
1	A	70	ASP
1	A	117	ASN
1	A	194	GLY
1	A	590	PRO
1	A	191(B)	GLY
1	A	227	ILE
1	A	711	ALA

5.3.2 Protein sidechains ⓘ

In the following table, the Percentiles column shows the percent sidechain outliers of the chain as a percentile score with respect to all X-ray entries followed by that with respect to entries of similar resolution.

The Analysed column shows the number of residues for which the sidechain conformation was analysed, and the total number of residues.

Mol	Chain	Analysed	Rotameric	Outliers	Percentiles	
1	A	584/584 (100%)	540 (92%)	44 (8%)	17	26

All (44) residues with a non-rotameric sidechain are listed below:

Mol	Chain	Res	Type
1	A	41	THR
1	A	75	SER
1	A	84	LEU
1	A	91	ASP
1	A	99	ARG
1	A	108	THR
1	A	133	VAL
1	A	146	ASN
1	A	168	ASP
1	A	173	ARG

Continued on next page...

Continued from previous page...

Mol	Chain	Res	Type
1	A	178	MET
1	A	207	ARG
1	A	209	VAL
1	A	210	ILE
1	A	227(C)	THR
1	A	251	TYR
1	A	260	LEU
1	A	271	SER
1	A	332	LEU
1	A	371	LEU
1	A	388	ASN
1	A	389	LEU
1	A	410	LEU
1	A	442	ASN
1	A	469(A)	THR
1	A	481	TRP
1	A	508	ARG
1	A	513	MET
1	A	517	GLU
1	A	533	ILE
1	A	540	ARG
1	A	542	LEU
1	A	550	TRP
1	A	590	PRO
1	A	618	THR
1	A	635	PRO
1	A	662	ILE
1	A	668	THR
1	A	677	GLU
1	A	693	THR
1	A	700	ASN
1	A	706	MET
1	A	734	LEU
1	A	752	LEU

Some sidechains can be flipped to improve hydrogen bonding and reduce clashes. All (34) such sidechains are listed below:

Mol	Chain	Res	Type
1	A	65	ASN
1	A	92	ASN
1	A	134	ASN
1	A	146	ASN

Continued on next page...

Continued from previous page...

Mol	Chain	Res	Type
1	A	151	GLN
1	A	200	GLN
1	A	222	ASN
1	A	245	GLN
1	A	284	ASN
1	A	317	GLN
1	A	323	HIS
1	A	353	GLN
1	A	388	ASN
1	A	392	GLN
1	A	424	ASN
1	A	427	ASN
1	A	442	ASN
1	A	447	GLN
1	A	504	ASN
1	A	548	ASN
1	A	553	ASN
1	A	565	GLN
1	A	574	HIS
1	A	608	GLN
1	A	610	ASN
1	A	631	HIS
1	A	634	ASN
1	A	652	GLN
1	A	673	GLN
1	A	685	ASN
1	A	692	GLN
1	A	700	ASN
1	A	724	GLN
1	A	775	GLN

5.3.3 RNA ⓘ

There are no RNA molecules in this entry.

5.4 Non-standard residues in protein, DNA, RNA chains ⓘ

There are no non-standard protein/DNA/RNA residues in this entry.

5.5 Carbohydrates

There are no carbohydrates in this entry.

5.6 Ligand geometry

Of 2 ligands modelled in this entry, 1 is monoatomic - leaving 1 for Mogul analysis.

In the following table, the Counts columns list the number of bonds (or angles) for which Mogul statistics could be retrieved, the number of bonds (or angles) that are observed in the model and the number of bonds (or angles) that are defined in the chemical component dictionary. The Link column lists molecule types, if any, to which the group is linked. The Z score for a bond length (or angle) is the number of standard deviations the observed value is removed from the expected value. A bond length (or angle) with $|Z| > 2$ is considered an outlier worth inspection. RMSZ is the root-mean-square of all Z scores of the bond lengths (or angles).

Mol	Type	Chain	Res	Link	Bond lengths			Bond angles		
					Counts	RMSZ	# $ Z > 2$	Counts	RMSZ	# $ Z > 2$
2	CEG	A	780	-	14,18,18	4.60	3 (21%)	23,28,28	4.80	12 (52%)

In the following table, the Chirals column lists the number of chiral outliers, the number of chiral centers analysed, the number of these observed in the model and the number defined in the chemical component dictionary. Similar counts are reported in the Torsion and Rings columns. '-' means no outliers of that kind were identified.

Mol	Type	Chain	Res	Link	Chirals	Torsions	Rings
2	CEG	A	780	-	2/2/7/7	0/0/37/37	0/2/2/2

All (3) bond length outliers are listed below:

Mol	Chain	Res	Type	Atoms	Z	Observed(Å)	Ideal(Å)
2	A	780	CEG	C6-C5	-13.42	1.29	1.51
2	A	780	CEG	C9-C7	3.93	1.58	1.51
2	A	780	CEG	O6-C7	9.52	1.52	1.42

All (12) bond angle outliers are listed below:

Mol	Chain	Res	Type	Atoms	Z	Observed(°)	Ideal(°)
2	A	780	CEG	O6-C7-C9	-11.20	92.86	106.24
2	A	780	CEG	C6-O6-C7	-6.82	108.84	113.79
2	A	780	CEG	C6-C5-C4	-5.34	101.42	109.39
2	A	780	CEG	O4-C7-C9	-4.56	97.98	107.16
2	A	780	CEG	C7-O4-C4	-2.76	108.06	114.33
2	A	780	CEG	C1-C2-C3	2.18	113.68	110.43

Continued on next page...

Continued from previous page...

Mol	Chain	Res	Type	Atoms	Z	Observed(°)	Ideal(°)
2	A	780	CEG	O5-C1-C2	2.33	113.52	109.80
2	A	780	CEG	C1-O5-C5	4.05	120.97	113.47
2	A	780	CEG	O6-C7-O4	4.52	114.46	110.89
2	A	780	CEG	C9-C7-C8	4.81	117.35	110.95
2	A	780	CEG	O6-C6-C5	8.71	129.11	110.66
2	A	780	CEG	O5-C5-C6	12.19	127.55	108.92

All (2) chirality outliers are listed below:

Mol	Chain	Res	Type	Atom
2	A	780	CEG	C2
2	A	780	CEG	C1

There are no torsion outliers.

There are no ring outliers.

No monomer is involved in short contacts.

5.7 Other polymers [i](#)

There are no such residues in this entry.

5.8 Polymer linkage issues [i](#)

There are no chain breaks in this entry.

6 Fit of model and data [i](#)

6.1 Protein, DNA and RNA chains [i](#)

EDS was not executed - this section will therefore be empty.

6.2 Non-standard residues in protein, DNA, RNA chains [i](#)

EDS was not executed - this section will therefore be empty.

6.3 Carbohydrates [i](#)

EDS was not executed - this section will therefore be empty.

6.4 Ligands [i](#)

EDS was not executed - this section will therefore be empty.

6.5 Other polymers [i](#)

EDS was not executed - this section will therefore be empty.