



wwPDB X-ray Structure Validation Summary Report ⓘ

Feb 1, 2016 – 02:51 AM GMT

PDB ID : 2J0K
Title : CRYSTAL STRUCTURE OF A FRAGMENT OF FOCAL ADHESION KINASE CONTAINING THE FERM AND KINASE DOMAINS.
Authors : Lietha, D.; Cai, X.; Li, Y.; Schaller, M.D.; Eck, M.J.
Deposited on : 2006-08-03
Resolution : 3.00 Å(reported)

This is a wwPDB X-ray Structure Validation Summary Report for a publicly released PDB entry.
We welcome your comments at validation@mail.wwpdb.org
A user guide is available at
<http://wwpdb.org/validation/2016/XrayValidationReportHelp>
with specific help available everywhere you see the ⓘ symbol.

The following versions of software and data (see [references ⓘ](#)) were used in the production of this report:

MolProbity : 4.02b-467
Mogul : 1.7 (RC4), CSD as536be (2015)
Xtriage (Phenix) : 1.9-1692
EDS : rb-20026688
Percentile statistics : 20151230.v01 (using entries in the PDB archive December 30th 2015)
Refmac : 5.8.0135
CCP4 : 6.5.0
Ideal geometry (proteins) : Engh & Huber (2001)
Ideal geometry (DNA, RNA) : Parkinson et al. (1996)
Validation Pipeline (wwPDB-VP) : trunk26865

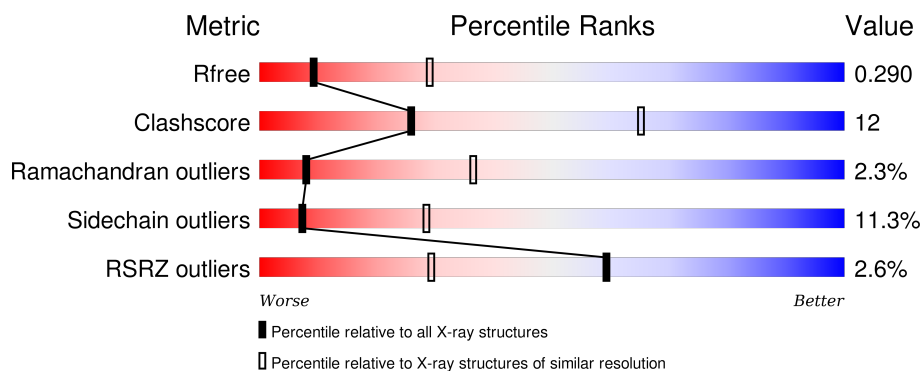
1 Overall quality at a glance

The following experimental techniques were used to determine the structure:

X-RAY DIFFRACTION

The reported resolution of this entry is 3.00 Å.

Percentile scores (ranging between 0-100) for global validation metrics of the entry are shown in the following graphic. The table shows the number of entries on which the scores are based.



Metric	Whole archive (#Entries)	Similar resolution (#Entries, resolution range(Å))
R_{free}	91344	1578 (3.00-3.00)
Clashscore	102246	1912 (3.00-3.00)
Ramachandran outliers	100387	1853 (3.00-3.00)
Sidechain outliers	100360	1856 (3.00-3.00)
RSRZ outliers	91569	1592 (3.00-3.00)

The table below summarises the geometric issues observed across the polymeric chains and their fit to the electron density. The red, orange, yellow and green segments on the lower bar indicate the fraction of residues that contain outliers for ≥ 3 , 2, 1 and 0 types of geometric quality criteria. A grey segment represents the fraction of residues that are not modelled. The numeric value for each fraction is indicated below the corresponding segment, with a dot representing fractions $\leq 5\%$. The upper red bar (where present) indicates the fraction of residues that have poor fit to the electron density. The numeric value is given above the bar.

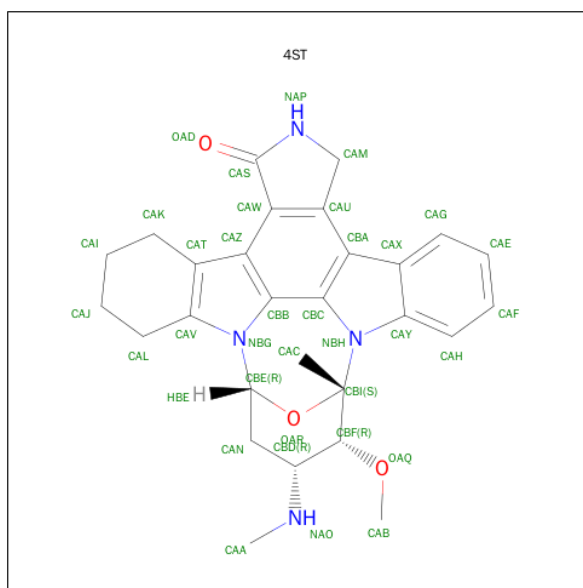
Mol	Chain	Length	Quality of chain
1	A	656	 65% 22% • 9%
1	B	656	 64% 23% 5% • 7%

In the tables below, the ZeroOcc column contains the number of atoms modelled with zero occupancy, the AltConf column contains the number of residues with at least one atom in alternate conformation and the Trace column contains the number of residues modelled with at most 2 atoms.

- Molecule 1 is a protein called FOCAL ADHESION KINASE 1.

Mol	Chain	Residues	Atoms					ZeroOcc	AltConf	Trace
1	A	598	Total 4836	C 3088	N 831	O 889	S 28	23	0	0
1	B	612	Total 4946	C 3152	N 852	O 913	S 29	12	0	0

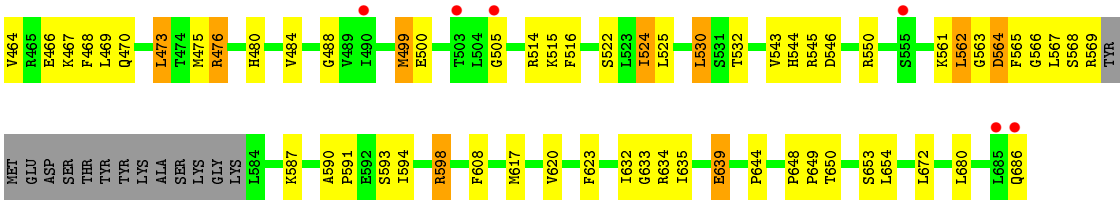
- Molecule 2 is 1,2,3,4-TETRAHYDROGEN-STAUROSPORINE (three-letter code: 4ST) (formula: $\text{C}_{28}\text{H}_{30}\text{N}_4\text{O}_3$).



Mol	Chain	Residues	Atoms				ZeroOcc	AltConf
2	A	1	Total	C	N	O	0	0
			35	28	4	3		
2	B	1	Total	C	N	O	0	0
			35	28	4	3		

- Molecule 3 is water.

Mol	Chain	Residues	Atoms		ZeroOcc	AltConf
3	A	29	Total 29	O 29	0	0
3	B	21	Total 21	O 21	0	0



4 Data and refinement statistics

Property	Value	Source
Space group	P 21 21 21	Depositor
Cell constants a, b, c, α , β , γ	63.02Å 106.21Å 240.88Å 90.00° 90.00° 90.00°	Depositor
Resolution (Å)	38.49 – 3.00 38.48 – 3.00	Depositor EDS
% Data completeness (in resolution range)	97.4 (38.49-3.00) 97.4 (38.48-3.00)	Depositor EDS
R_{merge}	0.10	Depositor
R_{sym}	(Not available)	Depositor
$\langle I/\sigma(I) \rangle$ ¹	2.79 (at 3.01Å)	Xtriage
Refinement program	REFMAC 5.2.0019	Depositor
R, R_{free}	0.234 , 0.299 0.221 , 0.290	Depositor DCC
R_{free} test set	1636 reflections (5.32%)	DCC
Wilson B-factor (Å ²)	84.1	Xtriage
Anisotropy	0.118	Xtriage
Bulk solvent k_{sol} (e/Å ³), B_{sol} (Å ²)	0.30 , 52.2	EDS
Estimated twinning fraction	No twinning to report.	Xtriage
L-test for twinning ²	$\langle L \rangle = 0.49$, $\langle L^2 \rangle = 0.33$	Xtriage
Outliers	0 of 32386 reflections	Xtriage
F_o, F_c correlation	0.92	EDS
Total number of atoms	9902	wwPDB-VP
Average B, all atoms (Å ²)	82.0	wwPDB-VP

Xtriage's analysis on translational NCS is as follows: *The largest off-origin peak in the Patterson function is 3.92% of the height of the origin peak. No significant pseudotranslation is detected.*

¹Intensities estimated from amplitudes.

²Theoretical values of $\langle |L| \rangle$, $\langle L^2 \rangle$ for acentric reflections are 0.5, 0.375 respectively for untwinned datasets, and 0.333, 0.2 for perfectly twinned datasets.

5 Model quality [i](#)

5.1 Standard geometry [i](#)

Bond lengths and bond angles in the following residue types are not validated in this section: 4ST

The Z score for a bond length (or angle) is the number of standard deviations the observed value is removed from the expected value. A bond length (or angle) with $|Z| > 5$ is considered an outlier worth inspection. RMSZ is the root-mean-square of all Z scores of the bond lengths (or angles).

Mol	Chain	Bond lengths		Bond angles	
		RMSZ	# Z >5	RMSZ	# Z >5
1	A	0.83	6/4939 (0.1%)	0.77	7/6670 (0.1%)
1	B	0.84	7/5052 (0.1%)	0.70	5/6824 (0.1%)
All	All	0.84	13/9991 (0.1%)	0.74	12/13494 (0.1%)

Chiral center outliers are detected by calculating the chiral volume of a chiral center and verifying if the center is modelled as a planar moiety or with the opposite hand. A planarity outlier is detected by checking planarity of atoms in a peptide group, atoms in a mainchain group or atoms of a sidechain that are expected to be planar.

Mol	Chain	#Chirality outliers	#Planarity outliers
1	A	0	1
1	B	1	3
All	All	1	4

The worst 5 of 13 bond length outliers are listed below:

Mol	Chain	Res	Type	Atoms	Z	Observed(Å)	Ideal(Å)
1	A	166	GLU	CG-CD	-41.49	0.89	1.51
1	B	445	GLU	CD-OE2	33.59	1.62	1.25
1	B	445	GLU	CD-OE1	26.63	1.54	1.25
1	A	152	LYS	CD-CE	-14.87	1.14	1.51
1	A	442	MET	CG-SD	-14.79	1.42	1.81

The worst 5 of 12 bond angle outliers are listed below:

Mol	Chain	Res	Type	Atoms	Z	Observed(°)	Ideal(°)
1	A	166	GLU	CG-CD-OE1	-18.73	80.83	118.30
1	A	166	GLU	CG-CD-OE2	17.49	153.29	118.30
1	A	442	MET	CG-SD-CE	12.99	120.98	100.20
1	A	166	GLU	CB-CG-CD	12.84	148.88	114.20

Continued on next page...

Continued from previous page...

Mol	Chain	Res	Type	Atoms	Z	Observed(°)	Ideal(°)
1	A	442	MET	CB-CG-SD	12.31	149.32	112.40

All (1) chirality outliers are listed below:

Mol	Chain	Res	Type	Atom
1	B	405	ASP	CA

All (4) planarity outliers are listed below:

Mol	Chain	Res	Type	Group
1	A	413	ARG	Peptide
1	B	288	ALA	Peptide
1	B	413	ARG	Peptide
1	B	414	ASP	Peptide

5.2 Too-close contacts [i](#)

In the following table, the Non-H and H(model) columns list the number of non-hydrogen atoms and hydrogen atoms in the chain respectively. The H(added) column lists the number of hydrogen atoms added and optimized by MolProbity. The Clashes column lists the number of clashes within the asymmetric unit, whereas Symm-Clashes lists symmetry related clashes.

Mol	Chain	Non-H	H(model)	H(added)	Clashes	Symm-Clashes
1	A	4836	0	4838	97	0
1	B	4946	0	4934	138	0
2	A	35	0	30	5	0
2	B	35	0	30	6	0
3	A	29	0	0	1	0
3	B	21	0	0	5	0
All	All	9902	0	9832	242	0

The all-atom clashscore is defined as the number of clashes found per 1000 atoms (including hydrogen atoms). The all-atom clashscore for this structure is 12.

The worst 5 of 242 close contacts within the same asymmetric unit are listed below, sorted by their clash magnitude.

Atom-1	Atom-2	Interatomic distance (Å)	Clash overlap (Å)
2:A:1687:4ST:HAH	2:A:1687:4ST:HAC2	1.26	1.12
1:B:261:ALA:HB1	1:B:267:ILE:HG23	1.20	1.11
1:B:261:ALA:HB1	1:B:267:ILE:CG2	1.85	1.06

Continued on next page...

Continued from previous page...

Atom-1	Atom-2	Interatomic distance (Å)	Clash overlap (Å)
1:A:285:ASP:HB2	1:A:286:LYS:HA	1.07	1.05
1:B:361:ARG:HB3	1:B:362:PRO:HD3	1.36	1.04

There are no symmetry-related clashes.

5.3 Torsion angles [i](#)

5.3.1 Protein backbone [i](#)

In the following table, the Percentiles column shows the percent Ramachandran outliers of the chain as a percentile score with respect to all X-ray entries followed by that with respect to entries of similar resolution.

The Analysed column shows the number of residues for which the backbone conformation was analysed, and the total number of residues.

Mol	Chain	Analysed	Favoured	Allowed	Outliers	Percentiles	
1	A	590/656 (90%)	519 (88%)	60 (10%)	11 (2%)	10	43
1	B	604/656 (92%)	540 (89%)	47 (8%)	17 (3%)	6	30
All	All	1194/1312 (91%)	1059 (89%)	107 (9%)	28 (2%)	8	36

5 of 28 Ramachandran outliers are listed below:

Mol	Chain	Res	Type
1	A	278	GLU
1	A	311	ASP
1	A	414	ASP
1	A	415	TYR
1	A	446	ASN

5.3.2 Protein sidechains [i](#)

In the following table, the Percentiles column shows the percent sidechain outliers of the chain as a percentile score with respect to all X-ray entries followed by that with respect to entries of similar resolution.

The Analysed column shows the number of residues for which the sidechain conformation was analysed, and the total number of residues.

Mol	Chain	Analysed	Rotameric	Outliers	Percentiles	
1	A	531/582 (91%)	479 (90%)	52 (10%)	10	36
1	B	544/582 (94%)	475 (87%)	69 (13%)	5	23
All	All	1075/1164 (92%)	954 (89%)	121 (11%)	7	28

5 of 121 residues with a non-rotameric sidechain are listed below:

Mol	Chain	Res	Type
1	B	62	THR
1	B	165	GLN
1	B	530	LEU
1	B	79	ASN
1	B	112	GLU

Some sidechains can be flipped to improve hydrogen bonding and reduce clashes. 5 of 23 such sidechains are listed below:

Mol	Chain	Res	Type
1	B	69	GLN
1	B	79	ASN
1	B	624	GLN
1	B	75	HIS
1	B	99	HIS

5.3.3 RNA ⓘ

There are no RNA molecules in this entry.

5.4 Non-standard residues in protein, DNA, RNA chains ⓘ

There are no non-standard protein/DNA/RNA residues in this entry.

5.5 Carbohydrates ⓘ

There are no carbohydrates in this entry.

5.6 Ligand geometry ⓘ

2 ligands are modelled in this entry.

In the following table, the Counts columns list the number of bonds (or angles) for which Mogul statistics could be retrieved, the number of bonds (or angles) that are observed in the model and the number of bonds (or angles) that are defined in the chemical component dictionary. The Link column lists molecule types, if any, to which the group is linked. The Z score for a bond length (or angle) is the number of standard deviations the observed value is removed from the expected value. A bond length (or angle) with $|Z| > 2$ is considered an outlier worth inspection. RMSZ is the root-mean-square of all Z scores of the bond lengths (or angles).

Mol	Type	Chain	Res	Link	Bond lengths			Bond angles		
					Counts	RMSZ	$\# Z > 2$	Counts	RMSZ	$\# Z > 2$
2	4ST	A	1687	-	28,42,42	1.72	5 (17%)	22,68,68	2.04	10 (45%)
2	4ST	B	1687	-	28,42,42	1.30	4 (14%)	22,68,68	1.40	3 (13%)

In the following table, the Chirals column lists the number of chiral outliers, the number of chiral centers analysed, the number of these observed in the model and the number defined in the chemical component dictionary. Similar counts are reported in the Torsion and Rings columns. '-' means no outliers of that kind were identified.

Mol	Type	Chain	Res	Link	Chirals	Torsions	Rings
2	4ST	A	1687	-	-	0/4/49/49	0/0/8/8
2	4ST	B	1687	-	-	0/4/49/49	0/0/8/8

The worst 5 of 9 bond length outliers are listed below:

Mol	Chain	Res	Type	Atoms	Z	Observed(Å)	Ideal(Å)
2	B	1687	4ST	CBA-CBC	-2.72	1.39	1.42
2	B	1687	4ST	CAW-CAS	-2.21	1.40	1.49
2	B	1687	4ST	CAU-CBA	-2.00	1.39	1.42
2	B	1687	4ST	CAL-CAV	2.25	1.55	1.49
2	A	1687	4ST	CAN-CBD	2.33	1.57	1.53

The worst 5 of 13 bond angle outliers are listed below:

Mol	Chain	Res	Type	Atoms	Z	Observed(°)	Ideal(°)
2	A	1687	4ST	OAD-CAS-CAW	-4.03	121.89	128.62
2	A	1687	4ST	CAI-CAK-CAT	-3.75	106.19	112.22
2	A	1687	4ST	CAT-CAZ-CBB	-3.62	104.50	110.28
2	B	1687	4ST	CAT-CAZ-CBB	-3.09	105.35	110.28
2	B	1687	4ST	OAD-CAS-CAW	-2.74	124.03	128.62

There are no chirality outliers.

There are no torsion outliers.

There are no ring outliers.

2 monomers are involved in 11 short contacts:

Mol	Chain	Res	Type	Clashes	Symm-Clashes
2	A	1687	4ST	5	0
2	B	1687	4ST	6	0

5.7 Other polymers [i](#)

There are no such residues in this entry.

5.8 Polymer linkage issues [i](#)

There are no chain breaks in this entry.

6 Fit of model and data [i](#)

6.1 Protein, DNA and RNA chains [i](#)

In the following table, the column labelled ‘#RSRZ> 2’ contains the number (and percentage) of RSRZ outliers, followed by percent RSRZ outliers for the chain as percentile scores relative to all X-ray entries and entries of similar resolution. The OWAB column contains the minimum, median, 95th percentile and maximum values of the occupancy-weighted average B-factor per residue. The column labelled ‘Q< 0.9’ lists the number of (and percentage) of residues with an average occupancy less than 0.9.

Mol	Chain	Analysed	<RSRZ>	#RSRZ>2		OWAB(Å ²)	Q<0.9
1	A	598/656 (91%)	-0.02	9 (1%)	76 49	62, 81, 102, 139	8 (1%)
1	B	612/656 (93%)	0.08	23 (3%)	44 18	56, 80, 109, 139	3 (0%)
All	All	1210/1312 (92%)	0.03	32 (2%)	59 29	56, 81, 105, 139	11 (0%)

The worst 5 of 32 RSRZ outliers are listed below:

Mol	Chain	Res	Type	RSRZ
1	B	460	THR	4.8
1	B	401	ILE	4.7
1	B	685	LEU	4.2
1	B	408	THR	3.9
1	B	406	THR	3.8

6.2 Non-standard residues in protein, DNA, RNA chains [i](#)

There are no non-standard protein/DNA/RNA residues in this entry.

6.3 Carbohydrates [i](#)

There are no carbohydrates in this entry.

6.4 Ligands [i](#)

In the following table, the Atoms column lists the number of modelled atoms in the group and the number defined in the chemical component dictionary. LLDF column lists the quality of electron density of the group with respect to its neighbouring residues in protein, DNA or RNA chains. The B-factors column lists the minimum, median, 95th percentile and maximum values of B factors of atoms in the group. The column labelled ‘Q< 0.9’ lists the number of atoms with occupancy less than 0.9.

Mol	Type	Chain	Res	Atoms	RSCC	RSR	LLDF	B-factors(\AA^2)	Q<0.9
2	4ST	A	1687	35/35	0.98	0.15	-1.06	54,55,61,62	0
2	4ST	B	1687	35/35	0.96	0.15	-2.74	56,59,59,60	0

6.5 Other polymers [i](#)

There are no such residues in this entry.