



Full wwPDB X-ray Structure Validation Report ⓘ

Feb 1, 2016 – 02:51 AM GMT

PDB ID : 2J25
Title : PARTIALLY DEGLYCOSYLATED GLUCOCERAMIDASE
Authors : Brumshtein, B.; Wormald, M.R.; Silman, I.; Futerman, A.H.; Sussman, J.L.
Deposited on : 2006-08-16
Resolution : 2.90 Å(reported)

This is a Full wwPDB X-ray Structure Validation Report for a publicly released PDB entry.
We welcome your comments at validation@mail.wwpdb.org
A user guide is available at
<http://wwpdb.org/validation/2016/XrayValidationReportHelp>
with specific help available everywhere you see the ⓘ symbol.

The following versions of software and data (see [references ⓘ](#)) were used in the production of this report:

MolProbity : 4.02b-467
Mogul : 1.7 (RC4), CSD as536be (2015)
Xtriage (Phenix) : 1.9-1692
EDS : rb-20026688
Percentile statistics : 20151230.v01 (using entries in the PDB archive December 30th 2015)
Refmac : 5.8.0135
CCP4 : 6.5.0
Ideal geometry (proteins) : Engh & Huber (2001)
Ideal geometry (DNA, RNA) : Parkinson et al. (1996)
Validation Pipeline (wwPDB-VP) : trunk26865

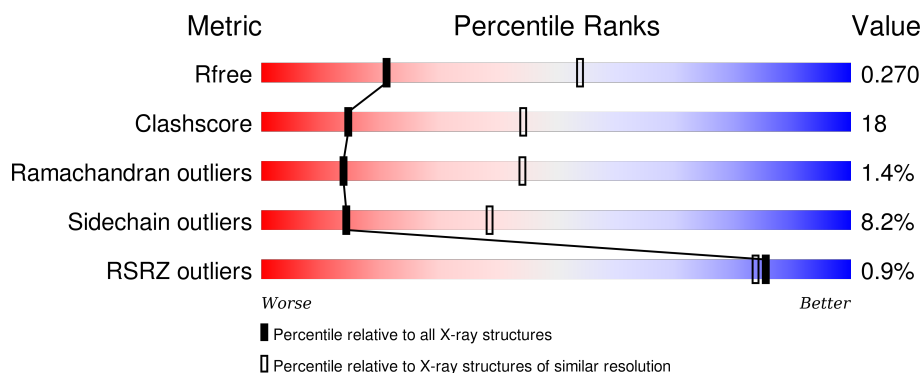
1 Overall quality at a glance

The following experimental techniques were used to determine the structure:

X-RAY DIFFRACTION

The reported resolution of this entry is 2.90 Å.

Percentile scores (ranging between 0-100) for global validation metrics of the entry are shown in the following graphic. The table shows the number of entries on which the scores are based.



Metric	Whole archive (#Entries)	Similar resolution (#Entries, resolution range(Å))
R_{free}	91344	1451 (2.90-2.90)
Clashscore	102246	1668 (2.90-2.90)
Ramachandran outliers	100387	1630 (2.90-2.90)
Sidechain outliers	100360	1632 (2.90-2.90)
RSRZ outliers	91569	1456 (2.90-2.90)

The table below summarises the geometric issues observed across the polymeric chains and their fit to the electron density. The red, orange, yellow and green segments on the lower bar indicate the fraction of residues that contain outliers for ≥ 3 , 2, 1 and 0 types of geometric quality criteria. A grey segment represents the fraction of residues that are not modelled. The numeric value for each fraction is indicated below the corresponding segment, with a dot representing fractions $\leq 5\%$. The upper red bar (where present) indicates the fraction of residues that have poor fit to the electron density. The numeric value is given above the bar.

Mol	Chain	Length	Quality of chain
1	A	497	 66% 30% . .
1	B	497	 65% 31% .

The following table lists non-polymeric compounds, carbohydrate monomers and non-standard residues in protein, DNA, RNA chains that are outliers for geometric or electron-density-fit criteria:

Mol	Type	Chain	Res	Chirality	Geometry	Clashes	Electron density
3	NAG	A	1500	X	-	-	-
4	SO4	A	1504	-	-	X	-
5	MAN	B	1502	X	-	-	-
6	NAG	B	1503	-	-	-	X

2 Entry composition

There are 7 unique types of molecules in this entry. The entry contains 8124 atoms, of which 0 are hydrogens and 0 are deuteriums.

In the tables below, the ZeroOcc column contains the number of atoms modelled with zero occupancy, the AltConf column contains the number of residues with at least one atom in alternate conformation and the Trace column contains the number of residues modelled with at most 2 atoms.

- Molecule 1 is a protein called GLUCOSYLCERAMIDASE.

Mol	Chain	Residues	Atoms					ZeroOcc	AltConf	Trace
1	A	497	Total	C	N	O	S	0	0	0
			3903	2512	669	706	16			
1	B	497	Total	C	N	O	S	0	0	0
			3898	2509	669	704	16			

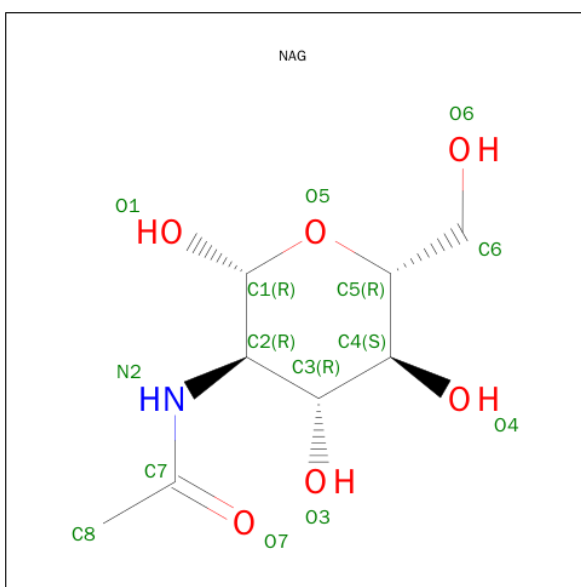
There are 2 discrepancies between the modelled and reference sequences:

Chain	Residue	Modelled	Actual	Comment	Reference
A	495	HIS	ARG	CONFLICT	UNP P04062
B	495	HIS	ARG	CONFLICT	UNP P04062

- Molecule 2 is a polymer of unknown type called SUGAR (2-MER).

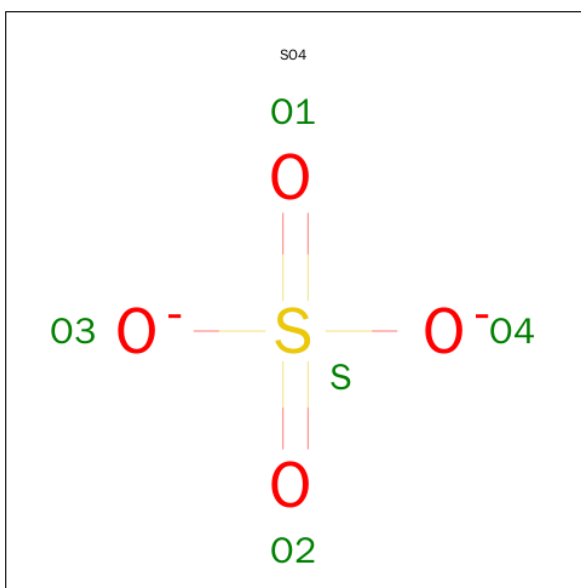
Mol	Chain	Residues	Atoms				ZeroOcc	AltConf
2	A	2	Total	C	N	O	0	0
			28	16	2	10		
2	B	2	Total	C	N	O	0	0
			28	16	2	10		

- Molecule 3 is SUGAR (N-ACETYL-D-GLUCOSAMINE) (three-letter code: NAG) (formula: C₈H₁₅NO₆).



Mol	Chain	Residues	Atoms				ZeroOcc	AltConf
3	A	1	Total	C	N	O	0	0
			14	8	1	5		

- Molecule 4 is SULFATE ION (three-letter code: SO4) (formula: O₄S).



Mol	Chain	Residues	Atoms			ZeroOcc	AltConf
4	A	1	Total	O	S	0	0
			5	4	1		
4	A	1	Total	O	S	0	0
			5	4	1		
4	A	1	Total	O	S	0	0
			5	4	1		

Continued on next page...

Continued from previous page...

Mol	Chain	Residues	Atoms			ZeroOcc	AltConf
4	A	1	Total	O	S	0	0
			5	4	1		
4	A	1	Total	O	S	0	0
			5	4	1		
4	A	1	Total	O	S	0	0
			5	4	1		
4	A	1	Total	O	S	0	0
			5	4	1		
4	A	1	Total	O	S	0	0
			5	4	1		
4	B	1	Total	O	S	0	0
			5	4	1		
4	B	1	Total	O	S	0	0
			5	4	1		
4	B	1	Total	O	S	0	0
			5	4	1		
4	B	1	Total	O	S	0	0
			5	4	1		
4	B	1	Total	O	S	0	0
			5	4	1		
4	B	1	Total	O	S	0	0
			5	4	1		

- Molecule 5 is a polymer of unknown type called SUGAR (5-MER).

Mol	Chain	Residues	Atoms				ZeroOcc	AltConf
5	B	5	Total	C	N	O	0	0
			61	34	2	25		

- Molecule 6 is a polymer of unknown type called SUGAR (3-MER).

Mol	Chain	Residues	Atoms				ZeroOcc	AltConf
6	B	3	Total	C	N	O	0	0
			39	22	2	15		

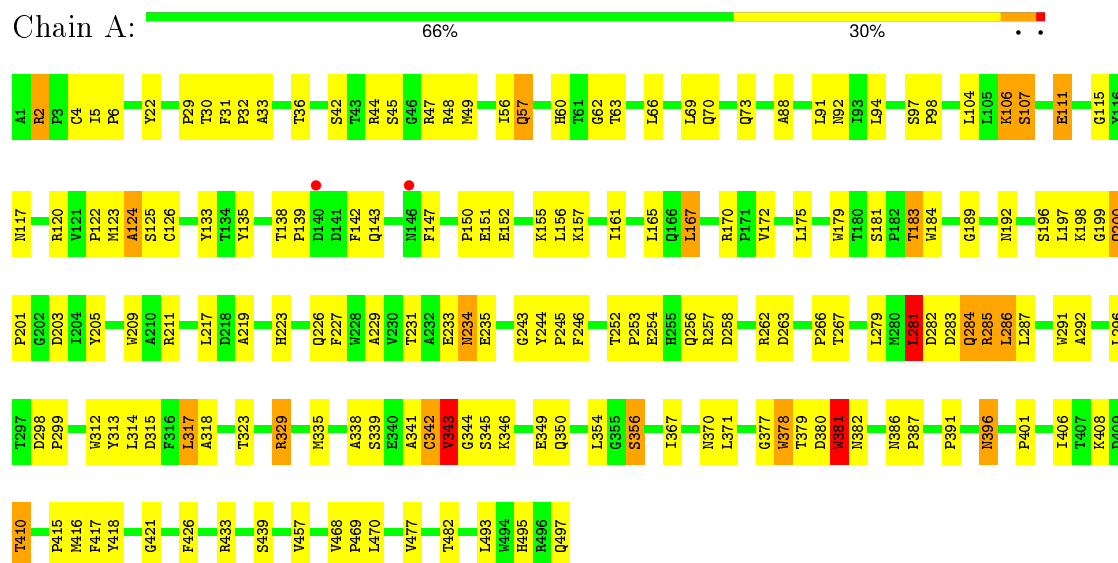
- Molecule 7 is water.

Mol	Chain	Residues	Atoms		ZeroOcc	AltConf
7	A	37	Total 37	O 37	0	0
7	B	31	Total 31	O 31	0	0

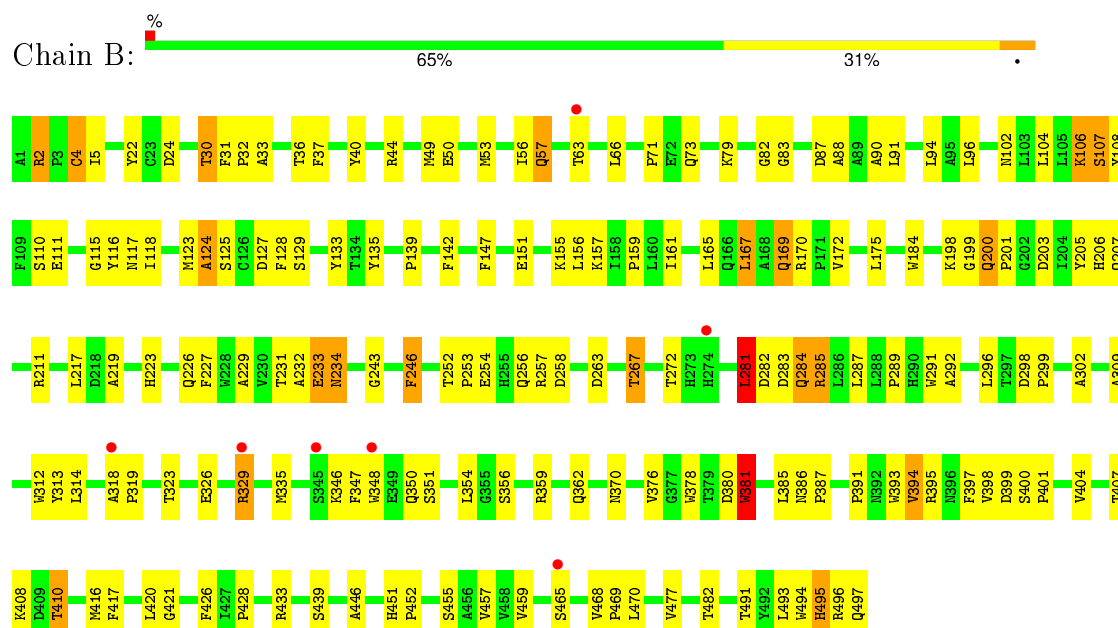
3 Residue-property plots

These plots are drawn for all protein, RNA and DNA chains in the entry. The first graphic for a chain summarises the proportions of errors displayed in the second graphic. The second graphic shows the sequence view annotated by issues in geometry and electron density. Residues are color-coded according to the number of geometric quality criteria for which they contain at least one outlier: green = 0, yellow = 1, orange = 2 and red = 3 or more. A red dot above a residue indicates a poor fit to the electron density ($RSRZ > 2$). Stretches of 2 or more consecutive residues without any outlier are shown as a green connector. Residues present in the sample, but not in the model, are shown in grey.

• Molecule 1: GLUCOSYLCERAMIDASE



• Molecule 1: GLUCOSYLCERAMIDASE



4 Data and refinement statistics

Property	Value	Source
Space group	C 2 2 21	Depositor
Cell constants a, b, c, α , β , γ	108.63Å 280.82Å 91.06Å 90.00° 90.00° 90.00°	Depositor
Resolution (Å)	29.67 – 2.90 29.67 – 2.90	Depositor EDS
% Data completeness (in resolution range)	100.0 (29.67-2.90) 100.0 (29.67-2.90)	Depositor EDS
R_{merge}	0.11	Depositor
R_{sym}	(Not available)	Depositor
$\langle I/\sigma(I) \rangle$ ¹	4.37 (at 2.90Å)	Xtriage
Refinement program	REFMAC 5.2.0005	Depositor
R, R_{free}	0.215 , 0.273 0.215 , 0.270	Depositor DCC
R_{free} test set	1539 reflections (5.16%)	DCC
Wilson B-factor (Å ²)	37.0	Xtriage
Anisotropy	0.218	Xtriage
Bulk solvent k_{sol} (e/Å ³), B_{sol} (Å ²)	0.31 , 28.9	EDS
Estimated twinning fraction	No twinning to report.	Xtriage
L-test for twinning ²	$\langle L \rangle = 0.47$, $\langle L^2 \rangle = 0.30$	Xtriage
Outliers	0 of 31336 reflections	Xtriage
F_o, F_c correlation	0.90	EDS
Total number of atoms	8124	wwPDB-VP
Average B, all atoms (Å ²)	33.0	wwPDB-VP

Xtriage's analysis on translational NCS is as follows: *The largest off-origin peak in the Patterson function is 3.79% of the height of the origin peak. No significant pseudotranslation is detected.*

¹Intensities estimated from amplitudes.

²Theoretical values of $\langle |L| \rangle$, $\langle L^2 \rangle$ for acentric reflections are 0.5, 0.375 respectively for untwinned datasets, and 0.333, 0.2 for perfectly twinned datasets.

5 Model quality

5.1 Standard geometry

Bond lengths and bond angles in the following residue types are not validated in this section: SO4, BMA, NAG, MAN

The Z score for a bond length (or angle) is the number of standard deviations the observed value is removed from the expected value. A bond length (or angle) with $|Z| > 5$ is considered an outlier worth inspection. RMSZ is the root-mean-square of all Z scores of the bond lengths (or angles).

Mol	Chain	Bond lengths		Bond angles	
		RMSZ	$\# Z > 5$	RMSZ	$\# Z > 5$
1	A	0.64	2/4022 (0.0%)	0.71	0/5485
1	B	0.65	0/4017	0.70	0/5478
All	All	0.65	2/8039 (0.0%)	0.71	0/10963

Chiral center outliers are detected by calculating the chiral volume of a chiral center and verifying if the center is modelled as a planar moiety or with the opposite hand. A planarity outlier is detected by checking planarity of atoms in a peptide group, atoms in a mainchain group or atoms of a sidechain that are expected to be planar.

Mol	Chain	#Chirality outliers	#Planarity outliers
5	B	1	0

All (2) bond length outliers are listed below:

Mol	Chain	Res	Type	Atoms	Z	Observed(Å)	Ideal(Å)
1	A	378	TRP	CB-CG	-7.36	1.37	1.50
1	A	111	GLU	CG-CD	5.35	1.59	1.51

There are no bond angle outliers.

All (1) chirality outliers are listed below:

Mol	Chain	Res	Type	Atom
5	B	1502	MAN	C1

There are no planarity outliers.

5.2 Too-close contacts ⓘ

In the following table, the Non-H and H(model) columns list the number of non-hydrogen atoms and hydrogen atoms in the chain respectively. The H(added) column lists the number of hydrogen atoms added and optimized by MolProbity. The Clashes column lists the number of clashes within the asymmetric unit, whereas Symm-Clashes lists symmetry related clashes.

Mol	Chain	Non-H	H(model)	H(added)	Clashes	Symm-Clashes
1	A	3903	0	3801	147	0
1	B	3898	0	3797	132	0
2	A	28	0	25	0	0
2	B	28	0	25	0	0
3	A	14	0	13	0	0
4	A	45	0	0	4	0
4	B	40	0	0	4	0
5	B	61	0	52	2	0
6	B	39	0	34	4	0
7	A	37	0	0	6	0
7	B	31	0	0	6	0
All	All	8124	0	7747	282	0

The all-atom clashscore is defined as the number of clashes found per 1000 atoms (including hydrogen atoms). The all-atom clashscore for this structure is 18.

All (282) close contacts within the same asymmetric unit are listed below, sorted by their clash magnitude.

Atom-1	Atom-2	Interatomic distance (Å)	Clash overlap (Å)
5:B:1502:MAN:C2	5:B:1502:MAN:C1	1.80	1.50
5:B:1502:MAN:C2	5:B:1502:MAN:O2	1.83	1.25
1:A:329:ARG:HH11	1:A:329:ARG:HG2	0.93	1.07
1:B:329:ARG:HH11	1:B:329:ARG:HG2	0.95	1.04
1:A:284:GLN:NE2	1:A:314:LEU:H	1.58	1.00
1:B:329:ARG:NH1	1:B:329:ARG:HG2	1.75	0.97
1:A:314:LEU:HB3	1:A:317:LEU:HD11	1.49	0.94
6:B:1504:NAG:H4	6:B:1505:BMA:O2	1.67	0.94
1:A:284:GLN:HE21	1:A:314:LEU:H	1.06	0.91
1:A:30:THR:O	1:A:32:PRO:HD3	1.71	0.90
1:A:329:ARG:HG2	1:A:329:ARG:NH1	1.72	0.88
1:B:329:ARG:HH11	1:B:329:ARG:CG	1.86	0.86
1:A:106:LYS:HG3	1:A:167:LEU:HD12	1.60	0.83
1:A:284:GLN:HG3	1:A:314:LEU:HB2	1.62	0.81
1:A:120:ARG:HB2	1:A:379:THR:HG21	1.63	0.81
1:A:329:ARG:CG	1:A:329:ARG:HH11	1.86	0.79

Continued on next page...

Continued from previous page...

Atom-1	Atom-2	Interatomic distance (Å)	Clash overlap (Å)
1:A:29:PRO:HB3	7:A:2001:HOH:O	1.83	0.79
1:A:44:ARG:HD2	4:A:1504:SO4:O3	1.84	0.78
1:A:106:LYS:HG3	1:A:167:LEU:CD1	2.14	0.78
1:B:284:GLN:HE22	1:B:313:TYR:HD1	1.32	0.78
1:B:106:LYS:HG3	1:B:167:LEU:HD12	1.68	0.75
1:A:139:PRO:HA	1:A:184:TRP:CD1	2.21	0.74
1:B:44:ARG:HD2	4:B:1510:SO4:O4	1.88	0.73
1:A:285:ARG:HD2	1:A:323:THR:OG1	1.88	0.73
1:B:111:GLU:HG3	1:B:169:GLN:NE2	2.03	0.73
1:B:243:GLY:N	4:B:1512:SO4:O3	2.23	0.71
1:A:243:GLY:O	1:B:348:TRP:NE1	2.24	0.71
1:A:200:GLN:HB2	1:A:201:PRO:HD2	1.72	0.70
1:B:111:GLU:HG3	1:B:169:GLN:HE21	1.57	0.69
1:A:312:TRP:HH2	1:A:367:ILE:HG13	1.58	0.69
1:B:285:ARG:HD2	1:B:323:THR:OG1	1.93	0.69
1:B:165:LEU:HD22	1:B:172:VAL:HB	1.76	0.68
1:B:106:LYS:HG3	1:B:167:LEU:CD1	2.23	0.68
1:B:66:LEU:HB3	1:B:439:SER:HB3	1.75	0.68
1:A:284:GLN:HE21	1:A:314:LEU:N	1.87	0.67
1:B:33:ALA:O	1:B:36:THR:HB	1.94	0.67
1:B:139:PRO:HA	1:B:184:TRP:CD1	2.30	0.66
1:A:49:MET:HE1	1:A:421:GLY:HA3	1.78	0.66
1:B:200:GLN:HB2	1:B:201:PRO:HD2	1.80	0.63
1:B:31:PHE:HB3	1:B:495:HIS:CE1	2.33	0.62
1:A:165:LEU:HD22	1:A:172:VAL:HB	1.82	0.62
1:A:281:LEU:HD22	1:A:283:ASP:HB3	1.81	0.62
1:A:49:MET:CE	1:A:421:GLY:HA3	2.29	0.62
1:A:125:SER:HB3	1:A:133:TYR:CD2	2.35	0.62
1:A:88:ALA:HB1	1:A:391:PRO:HD2	1.83	0.61
1:B:292:ALA:HB1	1:B:296:LEU:HD12	1.82	0.61
1:A:2:ARG:HH12	1:A:22:TYR:HA	1.65	0.61
1:A:196:SER:HB3	7:A:2017:HOH:O	2.01	0.60
1:B:312:TRP:HA	1:B:312:TRP:CE3	2.37	0.60
1:A:200:GLN:HB2	1:A:201:PRO:CD	2.31	0.60
1:A:377:GLY:C	1:A:378:TRP:CE3	2.74	0.60
1:A:281:LEU:HD22	1:A:283:ASP:CB	2.32	0.60
1:A:142:PHE:O	1:A:211:ARG:NH2	2.34	0.60
1:A:371:LEU:CD2	1:A:378:TRP:HH2	2.15	0.60
1:A:396:ASN:H	1:A:396:ASN:ND2	1.99	0.60
1:B:289:PRO:HD2	7:B:2018:HOH:O	2.01	0.60
1:A:123:MET:O	1:A:124:ALA:HB3	2.02	0.60

Continued on next page...

Continued from previous page...

Atom-1	Atom-2	Interatomic distance (Å)	Clash overlap (Å)
1:A:284:GLN:HB3	1:A:286:LEU:CD2	2.32	0.59
1:A:284:GLN:CG	1:A:314:LEU:HB2	2.30	0.59
1:B:319:PRO:HA	7:B:2020:HOH:O	2.03	0.59
1:B:359:ARG:NH1	1:B:399:ASP:OD2	2.33	0.59
1:B:96:LEU:HD21	1:B:404:VAL:HG13	1.84	0.59
1:B:207:GLN:HG3	7:B:2009:HOH:O	2.02	0.59
1:B:246:PHE:HD2	1:B:394:VAL:HG11	1.68	0.58
1:B:88:ALA:HB1	1:B:391:PRO:HD2	1.85	0.58
1:B:198:LYS:HD3	1:B:205:TYR:CE2	2.38	0.58
1:A:257:ARG:NH1	4:A:1508:SO4:O4	2.29	0.58
1:A:470:LEU:HB3	1:A:482:THR:HG23	1.85	0.58
1:B:2:ARG:HH12	1:B:22:TYR:HA	1.69	0.58
1:A:292:ALA:HB1	1:A:296:LEU:HD12	1.86	0.57
1:A:314:LEU:CB	1:A:317:LEU:HD11	2.31	0.57
1:A:298:ASP:C	1:A:298:ASP:OD1	2.41	0.57
1:B:200:GLN:HB2	1:B:201:PRO:CD	2.35	0.57
1:B:5:ILE:HG12	1:B:22:TYR:CE2	2.40	0.57
1:B:386:ASN:HB2	1:B:387:PRO:CD	2.35	0.57
1:B:263:ASP:O	1:B:267:THR:OG1	2.23	0.56
1:B:49:MET:CE	1:B:421:GLY:HA3	2.36	0.56
1:B:117:ASN:HA	1:B:172:VAL:HG22	1.88	0.55
1:B:32:PRO:HB2	1:B:36:THR:HG22	1.88	0.55
1:B:246:PHE:CD2	1:B:394:VAL:HG11	2.41	0.55
1:A:231:THR:HG22	1:A:279:LEU:HB2	1.88	0.55
1:B:401:PRO:HA	1:B:416:MET:HE3	1.89	0.55
1:B:142:PHE:O	1:B:211:ARG:NH2	2.38	0.55
1:A:201:PRO:HG2	1:A:258:ASP:HB2	1.89	0.54
1:B:123:MET:O	1:B:124:ALA:HB3	2.07	0.54
1:A:378:TRP:CE3	1:A:378:TRP:N	2.75	0.54
1:B:125:SER:HB3	1:B:133:TYR:CD2	2.42	0.54
1:B:201:PRO:HG2	1:B:258:ASP:HB2	1.89	0.54
1:B:298:ASP:OD1	1:B:298:ASP:C	2.46	0.54
1:A:262:ARG:O	1:A:266:PRO:HG2	2.08	0.54
1:A:198:LYS:HD3	1:A:205:TYR:CE2	2.42	0.54
1:B:159:PRO:HG3	4:B:1514:SO4:O4	2.08	0.54
1:B:281:LEU:HD22	1:B:283:ASP:HB3	1.90	0.53
1:A:104:LEU:O	1:A:107:SER:HB2	2.08	0.53
1:A:371:LEU:HD23	1:A:378:TRP:HH2	1.73	0.53
1:B:49:MET:HE1	1:B:421:GLY:HA3	1.91	0.53
1:B:326:GLU:OE1	1:B:329:ARG:CZ	2.58	0.52
1:B:408:LYS:HB3	1:B:410:THR:HG23	1.92	0.52

Continued on next page...

Continued from previous page...

Atom-1	Atom-2	Interatomic distance (Å)	Clash overlap (Å)
1:A:5:ILE:HG12	1:A:22:TYR:CE2	2.44	0.52
1:B:56:ILE:HG21	1:B:477:VAL:HG12	1.91	0.52
1:B:135:TYR:O	1:B:147:PHE:HA	2.10	0.52
1:A:284:GLN:HB3	1:A:286:LEU:HD22	1.91	0.52
1:A:201:PRO:HG2	1:A:258:ASP:CB	2.40	0.52
1:A:66:LEU:HB3	1:A:439:SER:HB3	1.92	0.52
1:B:329:ARG:NH1	1:B:329:ARG:CG	2.56	0.52
1:A:117:ASN:HA	1:A:172:VAL:HG22	1.91	0.52
1:A:318:ALA:HB1	1:A:323:THR:HG21	1.90	0.52
1:A:200:GLN:HE21	1:A:200:GLN:H	1.57	0.52
1:A:48:ARG:HD2	1:A:418:TYR:CD1	2.45	0.51
1:A:200:GLN:CB	1:A:201:PRO:CD	2.88	0.51
1:B:79:LYS:N	1:B:376:VAL:O	2.39	0.51
1:A:377:GLY:HA2	1:A:378:TRP:CE3	2.45	0.51
1:A:408:LYS:HE3	7:A:2031:HOH:O	2.10	0.51
1:A:312:TRP:CZ2	1:A:378:TRP:CD1	2.99	0.51
1:A:45:SER:HB3	4:A:1504:SO4:O4	2.11	0.51
1:B:285:ARG:NE	1:B:318:ALA:HB3	2.26	0.51
1:B:200:GLN:H	1:B:200:GLN:HE21	1.58	0.51
1:A:284:GLN:NE2	1:A:314:LEU:N	2.43	0.50
1:A:386:ASN:HB2	1:A:387:PRO:CD	2.42	0.50
1:A:371:LEU:CD2	1:A:378:TRP:CH2	2.93	0.50
1:A:342:CYS:CB	1:A:381:TRP:HB2	2.42	0.50
1:A:30:THR:O	1:A:32:PRO:CD	2.54	0.50
1:A:285:ARG:NH2	1:A:315:ASP:HB3	2.26	0.50
1:A:125:SER:HB3	1:A:133:TYR:CE2	2.47	0.50
1:A:346:LYS:HB2	1:A:349:GLU:HG3	1.94	0.50
1:B:470:LEU:HB3	1:B:482:THR:HG23	1.93	0.49
1:B:30:THR:HB	7:B:2002:HOH:O	2.13	0.49
1:A:44:ARG:CD	4:A:1504:SO4:O3	2.59	0.49
1:A:133:TYR:CE1	1:A:150:PRO:HG2	2.47	0.49
1:A:151:GLU:CG	1:A:155:LYS:HG3	2.42	0.49
1:B:378:TRP:CZ3	1:B:420:LEU:HD21	2.47	0.49
1:A:356:SER:O	1:A:415:PRO:HG2	2.12	0.49
1:A:252:THR:HB	1:A:253:PRO:HD2	1.94	0.49
1:B:111:GLU:CG	1:B:169:GLN:HE21	2.23	0.49
1:A:408:LYS:O	1:A:410:THR:HG23	2.13	0.49
1:A:285:ARG:NH1	1:A:315:ASP:OD2	2.45	0.48
1:B:381:TRP:HA	1:B:381:TRP:CE3	2.48	0.48
1:A:380:ASP:OD1	1:A:381:TRP:N	2.46	0.48
6:B:1503:NAG:H61	6:B:1504:NAG:N2	2.29	0.48

Continued on next page...

Continued from previous page...

Atom-1	Atom-2	Interatomic distance (Å)	Clash overlap (Å)
1:B:346:LYS:O	1:B:348:TRP:N	2.47	0.48
1:B:200:GLN:CB	1:B:201:PRO:CD	2.92	0.48
1:A:287:LEU:HB3	1:A:291:TRP:CD1	2.49	0.48
1:B:157:LYS:O	1:B:161:ILE:HG13	2.12	0.48
1:B:125:SER:HB3	1:B:133:TYR:CE2	2.48	0.48
1:A:69:LEU:O	1:A:70:GLN:HG2	2.14	0.48
1:A:263:ASP:O	1:A:267:THR:OG1	2.28	0.48
1:A:200:GLN:N	1:A:200:GLN:HE21	2.12	0.47
1:A:33:ALA:O	1:A:36:THR:HB	2.13	0.47
1:B:346:LYS:C	1:B:348:TRP:H	2.18	0.47
1:A:426:PHE:HB3	1:A:493:LEU:HD21	1.96	0.47
1:A:203:ASP:C	1:A:203:ASP:OD1	2.51	0.47
1:B:82:GLY:HA3	1:B:118:ILE:O	2.15	0.47
1:A:342:CYS:HB2	1:A:381:TRP:HB2	1.96	0.47
1:B:281:LEU:HD22	1:B:283:ASP:CB	2.45	0.47
1:B:426:PHE:HB3	1:B:493:LEU:HD21	1.97	0.46
1:B:104:LEU:O	1:B:107:SER:HB2	2.15	0.46
1:B:386:ASN:HB2	1:B:387:PRO:HD2	1.98	0.46
1:B:408:LYS:CB	1:B:410:THR:HG23	2.45	0.46
1:B:83:GLY:HA2	1:B:380:ASP:O	2.16	0.46
1:B:407:THR:HG23	7:B:2028:HOH:O	2.16	0.46
1:A:312:TRP:CH2	1:A:367:ILE:HG13	2.45	0.46
1:B:198:LYS:HB2	1:B:205:TYR:CG	2.50	0.46
1:B:4:CYS:HA	1:B:24:ASP:HB3	1.97	0.46
1:A:417:PHE:C	1:A:417:PHE:CD2	2.89	0.46
1:A:234:ASN:HA	1:A:282:ASP:OD2	2.15	0.46
1:A:312:TRP:CZ3	1:A:341:ALA:HB1	2.51	0.46
1:A:219:ALA:O	1:A:223:HIS:HD2	1.98	0.46
1:B:151:GLU:CG	1:B:155:LYS:HG3	2.46	0.46
1:B:115:GLY:HA3	1:B:170:ARG:NH1	2.30	0.46
1:B:468:VAL:HA	1:B:469:PRO:HD2	1.73	0.46
1:B:234:ASN:HA	1:B:282:ASP:OD2	2.15	0.45
1:A:197:LEU:HD11	1:A:209:TRP:CD1	2.51	0.45
1:A:338:ALA:O	1:A:378:TRP:HA	2.16	0.45
1:A:56:ILE:HG21	1:A:477:VAL:HG12	1.98	0.45
1:B:102:ASN:O	1:B:106:LYS:HB2	2.16	0.45
1:A:377:GLY:CA	1:A:378:TRP:CE3	2.99	0.45
1:A:192:ASN:HB2	1:A:244:TYR:O	2.17	0.45
1:B:378:TRP:HZ3	1:B:420:LEU:HD21	1.82	0.45
1:A:381:TRP:HA	1:A:381:TRP:CE3	2.51	0.45
6:B:1503:NAG:H61	6:B:1504:NAG:HN2	1.81	0.45

Continued on next page...

Continued from previous page...

Atom-1	Atom-2	Interatomic distance (Å)	Clash overlap (Å)
1:B:298:ASP:HA	1:B:299:PRO:HD2	1.83	0.45
1:B:94:LEU:HD23	1:B:94:LEU:HA	1.82	0.45
1:B:312:TRP:HA	1:B:312:TRP:HE3	1.80	0.45
1:A:342:CYS:SG	1:A:343:VAL:N	2.90	0.45
1:A:457:VAL:HB	1:A:493:LEU:HD23	1.99	0.45
1:B:287:LEU:HB3	1:B:291:TRP:CD1	2.52	0.45
1:A:256:GLN:OE1	1:A:291:TRP:HZ3	1.99	0.44
1:B:312:TRP:CD1	1:B:314:LEU:HD23	2.53	0.44
1:B:381:TRP:HA	1:B:381:TRP:HE3	1.81	0.44
1:B:151:GLU:HG3	1:B:155:LYS:HG3	1.99	0.44
1:B:253:PRO:HG3	1:B:291:TRP:NE1	2.31	0.44
1:B:351:SER:OG	1:B:397:PHE:HB2	2.17	0.44
1:B:175:LEU:HA	1:B:229:ALA:O	2.17	0.44
1:A:254:GLU:O	1:A:257:ARG:HB3	2.17	0.44
1:A:198:LYS:HB2	1:A:205:TYR:CG	2.52	0.44
1:A:4:CYS:O	1:A:6:PRO:HD3	2.18	0.44
1:A:401:PRO:HA	1:A:416:MET:HE3	2.00	0.44
1:A:135:TYR:O	1:A:147:PHE:HA	2.17	0.44
1:B:128:PHE:HZ	1:B:398:VAL:HG22	1.83	0.44
1:B:281:LEU:HB3	1:B:309:ALA:O	2.17	0.44
1:A:133:TYR:CD1	1:A:150:PRO:HG2	2.53	0.43
1:A:143:GLN:NE2	1:A:143:GLN:HA	2.33	0.43
1:B:56:ILE:HD13	1:B:477:VAL:HG11	2.00	0.43
1:B:457:VAL:HB	1:B:493:LEU:HD23	2.01	0.43
1:B:385:LEU:HG	1:B:400:SER:HB2	2.00	0.43
1:A:245:PRO:HD3	1:B:348:TRP:CD2	2.53	0.43
1:A:138:THR:HB	7:A:2012:HOH:O	2.18	0.43
1:A:339:SER:O	1:A:379:THR:HB	2.18	0.43
1:B:127:ASP:HA	1:B:393:TRP:HE1	1.84	0.43
1:A:151:GLU:HG2	1:A:155:LYS:HG3	2.00	0.43
1:B:37:PHE:O	1:B:53:MET:HG2	2.18	0.43
1:B:201:PRO:HG2	1:B:258:ASP:CB	2.48	0.43
1:B:426:PHE:CD1	1:B:491:THR:HG21	2.53	0.43
1:A:468:VAL:HA	1:A:469:PRO:HD2	1.81	0.43
1:A:343:VAL:HB	1:A:344:GLY:H	1.72	0.43
1:B:82:GLY:HA2	1:B:116:TYR:CD1	2.54	0.43
1:B:104:LEU:C	1:B:104:LEU:HD23	2.39	0.43
1:A:371:LEU:HD21	1:A:378:TRP:CH2	2.54	0.43
1:B:417:PHE:C	1:B:417:PHE:CD2	2.92	0.43
1:B:233:GLU:HB2	7:B:2012:HOH:O	2.18	0.43
1:A:381:TRP:HA	1:A:381:TRP:HE3	1.84	0.43

Continued on next page...

Continued from previous page...

Atom-1	Atom-2	Interatomic distance (Å)	Clash overlap (Å)
6:B:1504:NAG:C4	6:B:1505:BMA:O2	2.54	0.42
1:A:406:ILE:HB	7:A:2006:HOH:O	2.19	0.42
1:A:377:GLY:C	1:A:378:TRP:CD2	2.93	0.42
1:B:231:THR:O	1:B:233:GLU:N	2.52	0.42
1:A:122:PRO:HB3	1:A:179:TRP:CZ3	2.54	0.42
1:A:286:LEU:HD13	1:A:317:LEU:HD13	2.01	0.42
1:A:312:TRP:CD2	1:A:341:ALA:HA	2.55	0.42
1:B:115:GLY:HA3	1:B:170:ARG:HH11	1.85	0.42
1:A:416:MET:HG3	7:A:2028:HOH:O	2.19	0.42
1:B:217:LEU:HD21	1:B:227:PHE:HB2	2.01	0.42
1:A:126:CYS:HB2	1:A:179:TRP:CD1	2.54	0.42
1:B:451:HIS:ND1	1:B:452:PRO:HD2	2.33	0.42
1:B:87:ASP:HB2	1:B:129:SER:HA	2.02	0.42
1:A:217:LEU:HD21	1:A:227:PHE:HB2	2.01	0.42
1:A:354:LEU:HD23	1:A:354:LEU:HA	1.71	0.42
1:A:97:SER:O	1:A:98:PRO:C	2.58	0.42
1:B:219:ALA:O	1:B:223:HIS:HD2	2.02	0.42
1:A:329:ARG:CG	1:A:329:ARG:NH1	2.55	0.42
1:B:200:GLN:HA	1:B:206:HIS:CE1	2.55	0.42
1:A:298:ASP:HA	1:A:299:PRO:HD2	1.88	0.42
1:B:127:ASP:HA	1:B:393:TRP:NE1	2.35	0.42
1:A:157:LYS:O	1:A:161:ILE:HG13	2.20	0.42
1:A:5:ILE:CG1	1:A:22:TYR:CE2	3.03	0.41
1:B:455:SER:HA	1:B:496:ARG:HG3	2.01	0.41
1:B:57:GLN:H	1:B:57:GLN:HG2	1.66	0.41
1:A:370:ASN:HB3	1:A:378:TRP:HZ2	1.85	0.41
1:A:245:PRO:HD3	1:B:348:TRP:CE2	2.56	0.41
1:B:494:TRP:HD1	1:B:495:HIS:O	2.03	0.41
1:A:175:LEU:HA	1:A:229:ALA:O	2.21	0.41
1:A:22:TYR:CD2	1:A:22:TYR:C	2.93	0.41
1:B:127:ASP:HA	1:B:393:TRP:CD1	2.56	0.41
1:A:378:TRP:CD2	1:A:378:TRP:N	2.88	0.41
1:B:200:GLN:HE21	1:B:200:GLN:N	2.18	0.41
1:A:199:GLY:HA3	1:A:203:ASP:OD2	2.21	0.41
1:A:209:TRP:HA	1:A:209:TRP:CE3	2.56	0.41
1:A:94:LEU:HD23	1:A:94:LEU:HA	1.72	0.41
1:B:428:PRO:HG3	4:B:1515:SO4:O4	2.20	0.41
1:A:88:ALA:O	1:A:92:ASN:ND2	2.54	0.41
1:B:252:THR:HB	1:B:253:PRO:HD2	2.03	0.41
1:A:152:GLU:O	1:A:156:LEU:HB2	2.21	0.41
1:A:183:THR:O	1:A:189:GLY:HA2	2.21	0.41

Continued on next page...

Continued from previous page...

Atom-1	Atom-2	Interatomic distance (Å)	Clash overlap (Å)
1:A:42:SER:HA	1:A:47:ARG:O	2.21	0.41
1:A:123:MET:O	1:A:124:ALA:CB	2.68	0.40
1:A:57:GLN:HG2	1:A:57:GLN:H	1.62	0.40
1:A:115:GLY:HA3	1:A:170:ARG:NH1	2.35	0.40
1:A:284:GLN:HB3	1:A:286:LEU:HD23	2.02	0.40
1:B:314:LEU:O	1:B:362:GLN:OE1	2.39	0.40
1:B:296:LEU:HA	1:B:302:ALA:HB2	2.02	0.40
1:A:181:SER:HA	1:A:209:TRP:CH2	2.57	0.40
1:B:354:LEU:HD23	1:B:354:LEU:HA	1.80	0.40
1:B:446:ALA:HA	1:B:459:VAL:O	2.21	0.40
1:A:60:HIS:CD2	1:A:62:GLY:H	2.39	0.40
1:B:40:TYR:HA	1:B:50:GLU:O	2.22	0.40
1:B:71:PRO:HG3	1:B:496:ARG:NH2	2.36	0.40
1:A:234:ASN:O	1:A:235:GLU:C	2.58	0.40
1:B:254:GLU:O	1:B:257:ARG:HB3	2.22	0.40
1:B:312:TRP:CZ2	1:B:318:ALA:N	2.89	0.40
1:B:477:VAL:HG21	1:B:496:ARG:HA	2.02	0.40
1:B:104:LEU:O	1:B:104:LEU:HD23	2.21	0.40
1:B:199:GLY:HA3	1:B:203:ASP:OD2	2.22	0.40
1:B:90:ALA:HB1	1:B:156:LEU:HB3	2.03	0.40

There are no symmetry-related clashes.

5.3 Torsion angles [i](#)

5.3.1 Protein backbone [i](#)

In the following table, the Percentiles column shows the percent Ramachandran outliers of the chain as a percentile score with respect to all X-ray entries followed by that with respect to entries of similar resolution.

The Analysed column shows the number of residues for which the backbone conformation was analysed, and the total number of residues.

Mol	Chain	Analysed	Favoured	Allowed	Outliers	Percentiles	
1	A	495/497 (100%)	452 (91%)	36 (7%)	7 (1%)	14	44
1	B	495/497 (100%)	458 (92%)	30 (6%)	7 (1%)	14	44
All	All	990/994 (100%)	910 (92%)	66 (7%)	14 (1%)	14	44

All (14) Ramachandran outliers are listed below:

Mol	Chain	Res	Type
1	A	343	VAL
1	B	233	GLU
1	B	381	TRP
1	A	381	TRP
1	B	124	ALA
1	B	347	PHE
1	A	233	GLU
1	B	73	GLN
1	B	232	ALA
1	B	281	LEU
1	A	73	GLN
1	A	124	ALA
1	A	281	LEU
1	A	31	PHE

5.3.2 Protein sidechains ⓘ

In the following table, the Percentiles column shows the percent sidechain outliers of the chain as a percentile score with respect to all X-ray entries followed by that with respect to entries of similar resolution.

The Analysed column shows the number of residues for which the sidechain conformation was analysed, and the total number of residues.

Mol	Chain	Analysed	Rotameric	Outliers	Percentiles	
1	A	417/424 (98%)	384 (92%)	33 (8%)	15	41
1	B	416/424 (98%)	381 (92%)	35 (8%)	14	37
All	All	833/848 (98%)	765 (92%)	68 (8%)	14	39

All (68) residues with a non-rotameric sidechain are listed below:

Mol	Chain	Res	Type
1	A	2	ARG
1	A	57	GLN
1	A	63	THR
1	A	91	LEU
1	A	106	LYS
1	A	107	SER
1	A	111	GLU
1	A	167	LEU
1	A	183	THR
1	A	200	GLN

Continued on next page...

Continued from previous page...

Mol	Chain	Res	Type
1	A	226	GLN
1	A	234	ASN
1	A	246	PHE
1	A	281	LEU
1	A	284	GLN
1	A	285	ARG
1	A	286	LEU
1	A	313	TYR
1	A	317	LEU
1	A	329	ARG
1	A	335	MET
1	A	342	CYS
1	A	343	VAL
1	A	345	SER
1	A	350	GLN
1	A	356	SER
1	A	381	TRP
1	A	382	ASN
1	A	396	ASN
1	A	410	THR
1	A	433	ARG
1	A	495	HIS
1	A	497	GLN
1	B	2	ARG
1	B	4	CYS
1	B	30	THR
1	B	57	GLN
1	B	63	THR
1	B	91	LEU
1	B	106	LYS
1	B	107	SER
1	B	108	TYR
1	B	110	SER
1	B	167	LEU
1	B	169	GLN
1	B	200	GLN
1	B	226	GLN
1	B	234	ASN
1	B	246	PHE
1	B	256	GLN
1	B	267	THR
1	B	272	THR

Continued on next page...

Continued from previous page...

Mol	Chain	Res	Type
1	B	281	LEU
1	B	284	GLN
1	B	285	ARG
1	B	329	ARG
1	B	335	MET
1	B	350	GLN
1	B	356	SER
1	B	370	ASN
1	B	381	TRP
1	B	394	VAL
1	B	395	ARG
1	B	410	THR
1	B	433	ARG
1	B	465	SER
1	B	495	HIS
1	B	497	GLN

Some sidechains can be flipped to improve hydrogen bonding and reduce clashes. All (16) such sidechains are listed below:

Mol	Chain	Res	Type
1	A	60	HIS
1	A	143	GLN
1	A	200	GLN
1	A	223	HIS
1	A	226	GLN
1	A	284	GLN
1	A	290	HIS
1	A	382	ASN
1	A	396	ASN
1	B	143	GLN
1	B	200	GLN
1	B	223	HIS
1	B	226	GLN
1	B	284	GLN
1	B	290	HIS
1	B	362	GLN

5.3.3 RNA ⓘ

There are no RNA molecules in this entry.

5.4 Non-standard residues in protein, DNA, RNA chains ⓘ

There are no non-standard protein/DNA/RNA residues in this entry.

5.5 Carbohydrates ⓘ

12 carbohydrates are modelled in this entry.

In the following table, the Counts columns list the number of bonds (or angles) for which Mogul statistics could be retrieved, the number of bonds (or angles) that are observed in the model and the number of bonds (or angles) that are defined in the chemical component dictionary. The Link column lists molecule types, if any, to which the group is linked. The Z score for a bond length (or angle) is the number of standard deviations the observed value is removed from the expected value. A bond length (or angle) with $|Z| > 2$ is considered an outlier worth inspection. RMSZ is the root-mean-square of all Z scores of the bond lengths (or angles).

Mol	Type	Chain	Res	Link	Bond lengths			Bond angles		
					Counts	RMSZ	# $ Z > 2$	Counts	RMSZ	# $ Z > 2$
2	NAG	A	1498	1,2	14,14,15	0.57	0	15,19,21	1.62	3 (20%)
2	NAG	A	1499	2	14,14,15	0.59	0	15,19,21	1.15	0
5	NAG	B	1498	1,5	14,14,15	0.58	0	15,19,21	1.16	2 (13%)
5	NAG	B	1499	5	14,14,15	0.62	0	15,19,21	2.76	4 (26%)
5	BMA	B	1500	5	11,11,12	1.60	1 (9%)	14,15,17	1.93	1 (7%)
5	MAN	B	1501	5	11,11,12	1.40	1 (9%)	14,15,17	1.21	2 (14%)
5	MAN	B	1502	5	11,11,12	6.64	3 (27%)	14,15,17	1.79	4 (28%)
6	NAG	B	1503	1,6	14,14,15	0.60	0	15,19,21	1.57	4 (26%)
6	NAG	B	1504	6	14,14,15	0.74	0	15,19,21	1.73	3 (20%)
6	BMA	B	1505	6	11,11,12	2.77	3 (27%)	14,15,17	2.83	3 (21%)
2	NAG	B	1506	1,2	14,14,15	0.47	0	15,19,21	1.15	1 (6%)
2	NAG	B	1507	2	14,14,15	0.55	0	15,19,21	1.26	2 (13%)

In the following table, the Chirals column lists the number of chiral outliers, the number of chiral centers analysed, the number of these observed in the model and the number defined in the chemical component dictionary. Similar counts are reported in the Torsion and Rings columns. '-' means no outliers of that kind were identified.

Mol	Type	Chain	Res	Link	Chirals	Torsions	Rings
2	NAG	A	1498	1,2	-	0/6/23/26	0/1/1/1
2	NAG	A	1499	2	-	0/6/23/26	0/1/1/1
5	NAG	B	1498	1,5	-	0/6/23/26	0/1/1/1
5	NAG	B	1499	5	-	0/6/23/26	0/1/1/1
5	BMA	B	1500	5	-	0/2/19/22	0/1/1/1

Continued on next page...

Continued from previous page...

Mol	Type	Chain	Res	Link	Chirals	Torsions	Rings
5	MAN	B	1501	5	-	0/2/19/22	0/1/1/1
5	MAN	B	1502	5	1/1/4/5	0/2/19/22	0/1/1/1
6	NAG	B	1503	1,6	-	0/6/23/26	0/1/1/1
6	NAG	B	1504	6	-	1/6/23/26	0/1/1/1
6	BMA	B	1505	6	-	0/2/19/22	0/1/1/1
2	NAG	B	1506	1,2	-	0/6/23/26	0/1/1/1
2	NAG	B	1507	2	-	0/6/23/26	0/1/1/1

All (8) bond length outliers are listed below:

Mol	Chain	Res	Type	Atoms	Z	Observed(Å)	Ideal(Å)
5	B	1501	MAN	O6-C6	3.92	1.59	1.42
5	B	1502	MAN	C2-C3	4.09	1.58	1.52
6	B	1505	BMA	C1-C2	4.49	1.63	1.52
5	B	1500	BMA	O6-C6	4.83	1.63	1.42
6	B	1505	BMA	O5-C1	5.07	1.52	1.43
6	B	1505	BMA	O2-C2	5.75	1.56	1.43
5	B	1502	MAN	C1-C2	11.69	1.80	1.52
5	B	1502	MAN	O2-C2	18.03	1.83	1.43

All (29) bond angle outliers are listed below:

Mol	Chain	Res	Type	Atoms	Z	Observed(°)	Ideal(°)
5	B	1500	BMA	C1-O5-C5	-6.76	103.67	112.25
2	A	1498	NAG	C2-N2-C7	-4.20	117.64	123.04
5	B	1502	MAN	O2-C2-C3	-4.15	101.77	110.12
6	B	1503	NAG	C2-N2-C7	-3.08	119.08	123.04
5	B	1498	NAG	C2-N2-C7	-2.94	119.26	123.04
5	B	1499	NAG	C2-N2-C7	-2.92	119.29	123.04
5	B	1499	NAG	O4-C4-C3	-2.62	104.44	110.34
2	A	1498	NAG	O4-C4-C3	-2.56	104.57	110.34
5	B	1498	NAG	O4-C4-C3	-2.45	104.81	110.34
6	B	1503	NAG	O4-C4-C3	-2.15	105.49	110.34
6	B	1505	BMA	O3-C3-C2	-2.13	106.15	110.00
2	B	1507	NAG	C2-N2-C7	-2.13	120.30	123.04
5	B	1502	MAN	O2-C2-C1	-2.10	104.99	109.21
6	B	1504	NAG	O7-C7-C8	-2.03	118.33	122.06
5	B	1501	MAN	O6-C6-C5	-2.02	104.65	111.33
2	B	1506	NAG	O5-C5-C6	2.04	111.77	107.35
5	B	1502	MAN	C1-C2-C3	2.05	111.97	109.54
5	B	1502	MAN	C2-C3-C4	2.08	114.58	111.04
6	B	1503	NAG	O4-C4-C5	2.18	115.01	109.24

Continued on next page...

Continued from previous page...

Mol	Chain	Res	Type	Atoms	Z	Observed(°)	Ideal(°)
2	B	1507	NAG	C1-O5-C5	2.60	115.55	112.25
6	B	1503	NAG	C1-O5-C5	2.70	115.68	112.25
5	B	1501	MAN	C1-O5-C5	2.92	115.95	112.25
2	A	1498	NAG	C1-O5-C5	3.03	116.09	112.25
5	B	1499	NAG	C3-C4-C5	3.62	116.52	110.20
6	B	1504	NAG	C1-O5-C5	3.71	116.95	112.25
6	B	1504	NAG	C4-C3-C2	3.95	117.36	111.23
6	B	1505	BMA	C1-O5-C5	6.83	120.91	112.25
6	B	1505	BMA	C1-C2-C3	7.12	117.97	109.54
5	B	1499	NAG	C1-O5-C5	8.62	123.19	112.25

All (1) chirality outliers are listed below:

Mol	Chain	Res	Type	Atom
5	B	1502	MAN	C1

All (1) torsion outliers are listed below:

Mol	Chain	Res	Type	Atoms
6	B	1504	NAG	O7-C7-N2-C2

There are no ring outliers.

4 monomers are involved in 6 short contacts:

Mol	Chain	Res	Type	Clashes	Symm-Clashes
5	B	1502	MAN	2	0
6	B	1503	NAG	2	0
6	B	1504	NAG	4	0
6	B	1505	BMA	2	0

5.6 Ligand geometry

18 ligands are modelled in this entry.

In the following table, the Counts columns list the number of bonds (or angles) for which Mogul statistics could be retrieved, the number of bonds (or angles) that are observed in the model and the number of bonds (or angles) that are defined in the chemical component dictionary. The Link column lists molecule types, if any, to which the group is linked. The Z score for a bond length (or angle) is the number of standard deviations the observed value is removed from the expected value. A bond length (or angle) with $|Z| > 2$ is considered an outlier worth inspection. RMSZ is the root-mean-square of all Z scores of the bond lengths (or angles).

Mol	Type	Chain	Res	Link	Bond lengths			Bond angles		
					Counts	RMSZ	# Z > 2	Counts	RMSZ	# Z > 2
3	NAG	A	1500	1	14,14,15	2.10	3 (21%)	15,19,21	3.42	8 (53%)
4	SO4	A	1501	-	4,4,4	0.20	0	6,6,6	0.70	0
4	SO4	A	1502	-	4,4,4	0.10	0	6,6,6	0.30	0
4	SO4	A	1503	-	4,4,4	0.13	0	6,6,6	0.44	0
4	SO4	A	1504	-	4,4,4	0.28	0	6,6,6	0.53	0
4	SO4	A	1505	-	4,4,4	0.14	0	6,6,6	0.52	0
4	SO4	A	1506	-	4,4,4	0.16	0	6,6,6	0.35	0
4	SO4	A	1507	-	4,4,4	0.16	0	6,6,6	0.42	0
4	SO4	A	1508	-	4,4,4	0.14	0	6,6,6	0.35	0
4	SO4	A	1509	-	4,4,4	0.13	0	6,6,6	0.24	0
4	SO4	B	1508	-	4,4,4	0.13	0	6,6,6	0.31	0
4	SO4	B	1509	-	4,4,4	0.13	0	6,6,6	0.13	0
4	SO4	B	1510	-	4,4,4	0.17	0	6,6,6	0.19	0
4	SO4	B	1511	-	4,4,4	0.19	0	6,6,6	0.70	0
4	SO4	B	1512	-	4,4,4	0.23	0	6,6,6	0.30	0
4	SO4	B	1513	-	4,4,4	0.12	0	6,6,6	0.36	0
4	SO4	B	1514	-	4,4,4	0.13	0	6,6,6	0.36	0
4	SO4	B	1515	-	4,4,4	0.07	0	6,6,6	0.17	0

In the following table, the Chirals column lists the number of chiral outliers, the number of chiral centers analysed, the number of these observed in the model and the number defined in the chemical component dictionary. Similar counts are reported in the Torsion and Rings columns. '-' means no outliers of that kind were identified.

Mol	Type	Chain	Res	Link	Chirals	Torsions	Rings
3	NAG	A	1500	1	1/1/5/7	0/6/23/26	0/1/1/1
4	SO4	A	1501	-	-	0/0/0/0	0/0/0/0
4	SO4	A	1502	-	-	0/0/0/0	0/0/0/0
4	SO4	A	1503	-	-	0/0/0/0	0/0/0/0
4	SO4	A	1504	-	-	0/0/0/0	0/0/0/0
4	SO4	A	1505	-	-	0/0/0/0	0/0/0/0
4	SO4	A	1506	-	-	0/0/0/0	0/0/0/0
4	SO4	A	1507	-	-	0/0/0/0	0/0/0/0
4	SO4	A	1508	-	-	0/0/0/0	0/0/0/0
4	SO4	A	1509	-	-	0/0/0/0	0/0/0/0
4	SO4	B	1508	-	-	0/0/0/0	0/0/0/0
4	SO4	B	1509	-	-	0/0/0/0	0/0/0/0
4	SO4	B	1510	-	-	0/0/0/0	0/0/0/0
4	SO4	B	1511	-	-	0/0/0/0	0/0/0/0
4	SO4	B	1512	-	-	0/0/0/0	0/0/0/0
4	SO4	B	1513	-	-	0/0/0/0	0/0/0/0
4	SO4	B	1514	-	-	0/0/0/0	0/0/0/0

Continued on next page...

Continued from previous page...

Mol	Type	Chain	Res	Link	Chirals	Torsions	Rings
4	SO4	B	1515	-	-	0/0/0/0	0/0/0/0

All (3) bond length outliers are listed below:

Mol	Chain	Res	Type	Atoms	Z	Observed(Å)	Ideal(Å)
3	A	1500	NAG	C4-C3	3.24	1.60	1.52
3	A	1500	NAG	O4-C4	3.62	1.51	1.43
3	A	1500	NAG	C1-C2	5.03	1.59	1.52

All (8) bond angle outliers are listed below:

Mol	Chain	Res	Type	Atoms	Z	Observed(°)	Ideal(°)
3	A	1500	NAG	C4-C3-C2	-5.79	102.23	111.23
3	A	1500	NAG	C3-C4-C5	-4.21	102.86	110.20
3	A	1500	NAG	O6-C6-C5	-3.05	101.24	111.33
3	A	1500	NAG	O4-C4-C3	-2.73	104.19	110.34
3	A	1500	NAG	C3-C2-N2	2.82	117.32	110.56
3	A	1500	NAG	O4-C4-C5	3.45	118.39	109.24
3	A	1500	NAG	C2-N2-C7	5.52	130.12	123.04
3	A	1500	NAG	C1-O5-C5	7.11	121.27	112.25

All (1) chirality outliers are listed below:

Mol	Chain	Res	Type	Atom
3	A	1500	NAG	C1

There are no torsion outliers.

There are no ring outliers.

6 monomers are involved in 8 short contacts:

Mol	Chain	Res	Type	Clashes	Symm-Clashes
4	A	1504	SO4	3	0
4	A	1508	SO4	1	0
4	B	1510	SO4	1	0
4	B	1512	SO4	1	0
4	B	1514	SO4	1	0
4	B	1515	SO4	1	0

5.7 Other polymers

There are no such residues in this entry.

5.8 Polymer linkage issues

There are no chain breaks in this entry.

6 Fit of model and data [i](#)

6.1 Protein, DNA and RNA chains [i](#)

In the following table, the column labelled ‘#RSRZ > 2’ contains the number (and percentage) of RSRZ outliers, followed by percent RSRZ outliers for the chain as percentile scores relative to all X-ray entries and entries of similar resolution. The OWAB column contains the minimum, median, 95th percentile and maximum values of the occupancy-weighted average B-factor per residue. The column labelled ‘Q < 0.9’ lists the number of (and percentage) of residues with an average occupancy less than 0.9.

Mol	Chain	Analysed	<RSRZ>	#RSRZ>2	OWAB(Å ²)	Q<0.9
1	A	497/497 (100%)	-0.13	2 (0%) 93 92	19, 32, 48, 61	0
1	B	497/497 (100%)	-0.20	7 (1%) 78 76	19, 32, 49, 63	0
All	All	994/994 (100%)	-0.16	9 (0%) 85 84	19, 32, 49, 63	0

All (9) RSRZ outliers are listed below:

Mol	Chain	Res	Type	RSRZ
1	A	140	ASP	4.1
1	B	63	THR	2.5
1	B	274	HIS	2.4
1	B	348	TRP	2.3
1	B	318	ALA	2.2
1	B	329	ARG	2.2
1	B	345	SER	2.2
1	A	146	ASN	2.1
1	B	465	SER	2.0

6.2 Non-standard residues in protein, DNA, RNA chains [i](#)

There are no non-standard protein/DNA/RNA residues in this entry.

6.3 Carbohydrates [i](#)

In the following table, the Atoms column lists the number of modelled atoms in the group and the number defined in the chemical component dictionary. LLDF column lists the quality of electron density of the group with respect to its neighbouring residues in protein, DNA or RNA chains. The B-factors column lists the minimum, median, 95th percentile and maximum values of B factors of atoms in the group. The column labelled ‘Q < 0.9’ lists the number of atoms with occupancy less than 0.9.

Mol	Type	Chain	Res	Atoms	RSCC	RSR	LLDF	B-factors(\AA^2)	Q<0.9
6	NAG	B	1503	14/15	0.91	0.29	3.68	55,58,60,63	0
2	NAG	B	1506	14/15	0.86	0.22	1.50	55,58,60,62	0
5	NAG	B	1499	14/15	0.84	0.27	-	67,68,72,77	0
5	BMA	B	1500	11/12	0.85	0.34	-	82,85,87,88	0
2	NAG	A	1498	14/15	0.87	0.19	-	54,58,60,62	0
5	MAN	B	1502	11/12	0.67	0.49	-	90,90,91,91	0
5	NAG	B	1498	14/15	0.91	0.22	-	54,58,60,63	0
2	NAG	A	1499	14/15	0.84	0.28	-	59,62,64,64	0
6	BMA	B	1505	11/12	0.71	0.24	-	65,68,68,69	0
5	MAN	B	1501	11/12	0.55	0.43	-	89,90,90,90	0
6	NAG	B	1504	14/15	0.88	0.38	-	66,68,69,69	0
2	NAG	B	1507	14/15	0.81	0.29	-	62,64,65,65	0

6.4 Ligands ⓘ

In the following table, the Atoms column lists the number of modelled atoms in the group and the number defined in the chemical component dictionary. LLDF column lists the quality of electron density of the group with respect to its neighbouring residues in protein, DNA or RNA chains. The B-factors column lists the minimum, median, 95th percentile and maximum values of B factors of atoms in the group. The column labelled 'Q< 0.9' lists the number of atoms with occupancy less than 0.9.

Mol	Type	Chain	Res	Atoms	RSCC	RSR	LLDF	B-factors(\AA^2)	Q<0.9
4	SO4	A	1505	5/5	0.95	0.22	0.79	64,65,65,65	0
4	SO4	B	1512	5/5	0.97	0.15	-1.14	44,44,44,45	0
4	SO4	B	1511	5/5	0.99	0.07	-3.13	36,37,38,38	0
4	SO4	A	1501	5/5	0.98	0.15	-6.33	35,36,36,36	0
4	SO4	A	1504	5/5	0.97	0.21	-	51,51,52,53	0
4	SO4	A	1503	5/5	0.96	0.28	-	55,56,56,56	0
4	SO4	B	1515	5/5	0.96	0.34	-	75,75,75,75	0
4	SO4	B	1513	5/5	0.93	0.42	-	55,55,55,55	0
4	SO4	B	1509	5/5	0.96	0.20	-	63,64,64,64	0
4	SO4	B	1514	5/5	0.93	0.27	-	69,69,69,69	0
4	SO4	A	1509	5/5	0.84	0.24	-	88,88,88,88	0
3	NAG	A	1500	14/15	0.59	0.38	-	55,58,60,62	0
4	SO4	A	1502	5/5	0.98	0.10	-	47,47,48,49	0
4	SO4	B	1510	5/5	0.94	0.18	-	60,60,61,61	0
4	SO4	B	1508	5/5	0.97	0.12	-	48,49,49,49	0
4	SO4	A	1506	5/5	0.94	0.20	-	57,57,58,58	0
4	SO4	A	1508	5/5	0.84	0.17	-	89,89,90,90	0
4	SO4	A	1507	5/5	0.89	0.36	-	76,76,77,77	0

6.5 Other polymers

There are no such residues in this entry.