



Full wwPDB X-ray Structure Validation Report ⓘ

Feb 1, 2016 – 02:53 AM GMT

PDB ID : 2J6M
Title : CRYSTAL STRUCTURE OF EGFR KINASE DOMAIN IN COMPLEX WITH AEE788
Authors : Yun, C.-H.; Boggon, T.J.; Li, Y.; Woo, S.; Greulich, H.; Meyerson, M.; Eck, M.J.
Deposited on : 2006-09-29
Resolution : 3.10 Å(reported)

This is a Full wwPDB X-ray Structure Validation Report for a publicly released PDB entry.
We welcome your comments at validation@mail.wwpdb.org
A user guide is available at
<http://wwpdb.org/validation/2016/XrayValidationReportHelp>
with specific help available everywhere you see the ⓘ symbol.

The following versions of software and data (see [references ⓘ](#)) were used in the production of this report:

MolProbity : 4.02b-467
Mogul : 1.7 (RC4), CSD as536be (2015)
Xtriage (Phenix) : 1.9-1692
EDS : rb-20026688
Percentile statistics : 20151230.v01 (using entries in the PDB archive December 30th 2015)
Refmac : 5.8.0135
CCP4 : 6.5.0
Ideal geometry (proteins) : Engh & Huber (2001)
Ideal geometry (DNA, RNA) : Parkinson et al. (1996)
Validation Pipeline (wwPDB-VP) : trunk26865

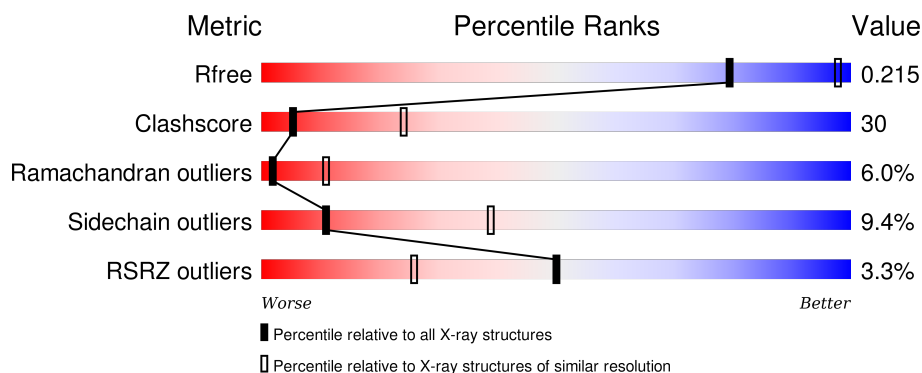
1 Overall quality at a glance

The following experimental techniques were used to determine the structure:

X-RAY DIFFRACTION

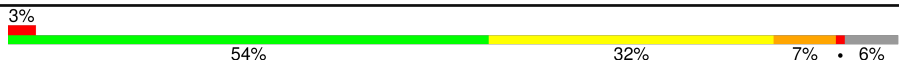
The reported resolution of this entry is 3.10 Å.

Percentile scores (ranging between 0-100) for global validation metrics of the entry are shown in the following graphic. The table shows the number of entries on which the scores are based.



Metric	Whole archive (#Entries)	Similar resolution (#Entries, resolution range(Å))
R_{free}	91344	1114 (3.14-3.06)
Clashscore	102246	1222 (3.14-3.06)
Ramachandran outliers	100387	1174 (3.14-3.06)
Sidechain outliers	100360	1174 (3.14-3.06)
RSRZ outliers	91569	1119 (3.14-3.06)

The table below summarises the geometric issues observed across the polymeric chains and their fit to the electron density. The red, orange, yellow and green segments on the lower bar indicate the fraction of residues that contain outliers for ≥ 3 , 2, 1 and 0 types of geometric quality criteria. A grey segment represents the fraction of residues that are not modelled. The numeric value for each fraction is indicated below the corresponding segment, with a dot representing fractions $\leq 5\%$. The upper red bar (where present) indicates the fraction of residues that have poor fit to the electron density. The numeric value is given above the bar.

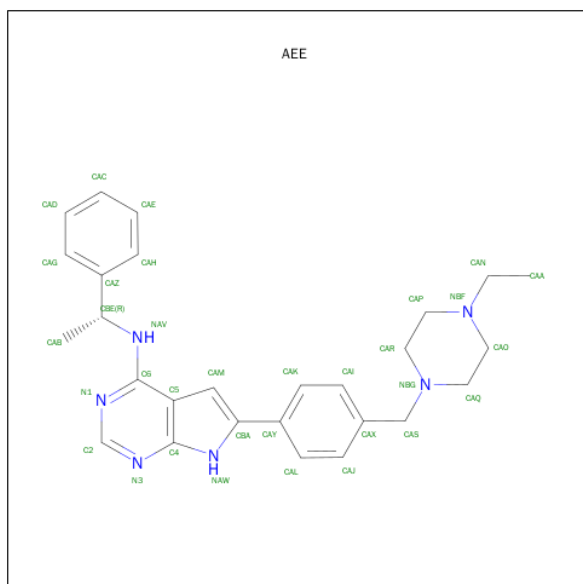
Mol	Chain	Length	Quality of chain
1	A	327	

In the tables below, the ZeroOcc column contains the number of atoms modelled with zero occupancy, the AltConf column contains the number of residues with at least one atom in alternate conformation and the Trace column contains the number of residues modelled with at most 2 atoms.

- Molecule 1 is a protein called EPIDERMAL GROWTH FACTOR RECEPTOR.

Mol	Chain	Residues	Atoms					ZeroOcc	AltConf	Trace
1	A	306	Total	C	N	O	S	0	0	0
			2433	1561	407	449	16			

- Molecule 2 is 6-{4-[(4-ETHYLPIPERAZIN-1-YL)METHYL]PHENYL}-N-[(1R)-1-PHENYLETHYL]-7H-PYRROLO[2,3-D]PYRIMIDIN-4-AMINE (three-letter code: AEE) (formula: $C_{27}H_{32}N_6$).



Mol	Chain	Residues	Atoms	ZeroOcc	AltConf
2	A	1	Total C N 33 27 6	0	0

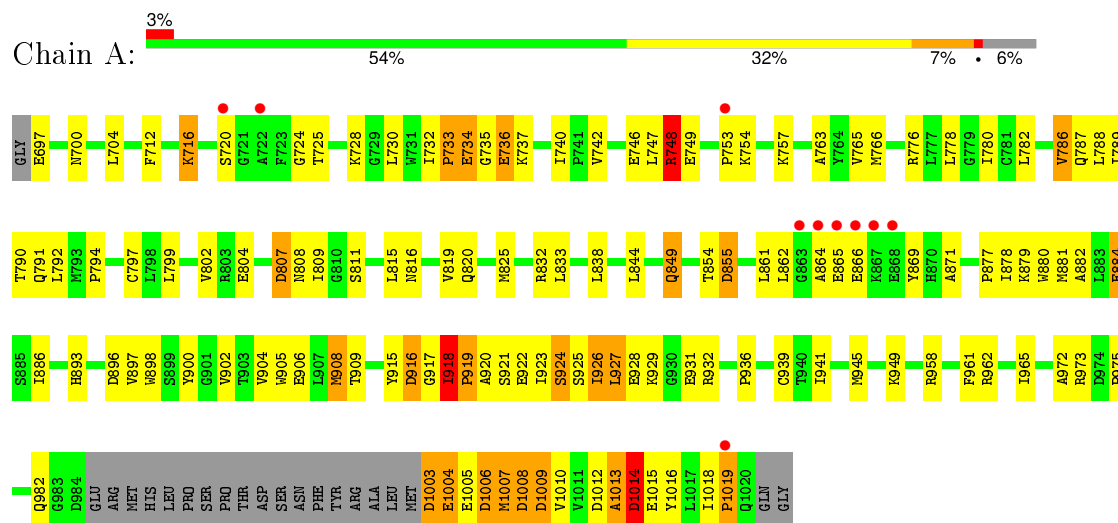
- Molecule 3 is water.

Mol	Chain	Residues	Atoms	ZeroOcc	AltConf
3	A	66	Total O 66 66	0	0

3 Residue-property plots [i](#)

These plots are drawn for all protein, RNA and DNA chains in the entry. The first graphic for a chain summarises the proportions of errors displayed in the second graphic. The second graphic shows the sequence view annotated by issues in geometry and electron density. Residues are color-coded according to the number of geometric quality criteria for which they contain at least one outlier: green = 0, yellow = 1, orange = 2 and red = 3 or more. A red dot above a residue indicates a poor fit to the electron density ($RSRZ > 2$). Stretches of 2 or more consecutive residues without any outlier are shown as a green connector. Residues present in the sample, but not in the model, are shown in grey.

• Molecule 1: EPIDERMAL GROWTH FACTOR RECEPTOR



4 Data and refinement statistics

Property	Value	Source
Space group	I 2 3	Depositor
Cell constants a, b, c, α , β , γ	145.31Å 145.31Å 145.31Å 90.00° 90.00° 90.00°	Depositor
Resolution (Å)	25.00 – 3.10 24.92 – 3.10	Depositor EDS
% Data completeness (in resolution range)	96.7 (25.00-3.10) 96.7 (24.92-3.10)	Depositor EDS
R_{merge}	0.07	Depositor
R_{sym}	(Not available)	Depositor
$\langle I/\sigma(I) \rangle$ ¹	1.87 (at 3.11Å)	Xtriage
Refinement program	REFMAC 5.2.0019	Depositor
R, R_{free}	0.199 , 0.249 0.198 , 0.215	Depositor DCC
R_{free} test set	431 reflections (4.97%)	DCC
Wilson B-factor (Å ²)	69.5	Xtriage
Anisotropy	0.000	Xtriage
Bulk solvent k_{sol} (e/Å ³), B_{sol} (Å ²)	0.32 , 53.8	EDS
Estimated twinning fraction	0.032 for -l,-k,-h	Xtriage
L-test for twinning ²	$\langle L \rangle = 0.50$, $\langle L^2 \rangle = 0.33$	Xtriage
Outliers	0 of 9103 reflections	Xtriage
F_o, F_c correlation	0.93	EDS
Total number of atoms	2532	wwPDB-VP
Average B, all atoms (Å ²)	53.0	wwPDB-VP

Xtriage's analysis on translational NCS is as follows: *The largest off-origin peak in the Patterson function is 2.94% of the height of the origin peak. No significant pseudotranslation is detected.*

¹Intensities estimated from amplitudes.

²Theoretical values of $\langle |L| \rangle$, $\langle L^2 \rangle$ for acentric reflections are 0.5, 0.375 respectively for untwinned datasets, and 0.333, 0.2 for perfectly twinned datasets.

5 Model quality [i](#)

5.1 Standard geometry [i](#)

Bond lengths and bond angles in the following residue types are not validated in this section: AEE

The Z score for a bond length (or angle) is the number of standard deviations the observed value is removed from the expected value. A bond length (or angle) with $|Z| > 5$ is considered an outlier worth inspection. RMSZ is the root-mean-square of all Z scores of the bond lengths (or angles).

Mol	Chain	Bond lengths		Bond angles	
		RMSZ	$\# Z > 5$	RMSZ	$\# Z > 5$
1	A	0.55	1/2485 (0.0%)	0.72	2/3366 (0.1%)

All (1) bond length outliers are listed below:

Mol	Chain	Res	Type	Atoms	Z	Observed(Å)	Ideal(Å)
1	A	736	GLU	CD-OE2	-11.83	1.12	1.25

All (2) bond angle outliers are listed below:

Mol	Chain	Res	Type	Atoms	Z	Observed(°)	Ideal(°)
1	A	735	GLY	N-CA-C	-7.77	93.67	113.10
1	A	728	LYS	N-CA-C	-5.35	96.56	111.00

There are no chirality outliers.

There are no planarity outliers.

5.2 Too-close contacts [i](#)

In the following table, the Non-H and H(model) columns list the number of non-hydrogen atoms and hydrogen atoms in the chain respectively. The H(added) column lists the number of hydrogen atoms added and optimized by MolProbity. The Clashes column lists the number of clashes within the asymmetric unit, whereas Symm-Clashes lists symmetry related clashes.

Mol	Chain	Non-H	H(model)	H(added)	Clashes	Symm-Clashes
1	A	2433	0	2447	145	0
2	A	33	0	32	12	0
3	A	66	0	0	4	0
All	All	2532	0	2479	149	0

The all-atom clashscore is defined as the number of clashes found per 1000 atoms (including hydrogen atoms). The all-atom clashscore for this structure is 30.

All (149) close contacts within the same asymmetric unit are listed below, sorted by their clash magnitude.

Atom-1	Atom-2	Interatomic distance (Å)	Clash overlap (Å)
1:A:804:GLU:OE1	2:A:2021:AEE:HAA1	1.39	1.18
1:A:924:SER:O	1:A:928:GLU:HG3	1.45	1.16
1:A:926:ILE:HG22	1:A:927:LEU:N	1.56	1.13
1:A:804:GLU:OE1	2:A:2021:AEE:CAA	2.02	1.07
1:A:918:ILE:CD1	1:A:918:ILE:H	1.67	1.07
1:A:804:GLU:CD	2:A:2021:AEE:HAA1	1.82	1.00
1:A:737:LYS:HE2	1:A:1009:ASP:OD1	1.67	0.93
1:A:926:ILE:HG22	1:A:927:LEU:H	1.13	0.93
1:A:918:ILE:N	1:A:918:ILE:HD12	1.84	0.91
1:A:926:ILE:CG2	1:A:927:LEU:N	2.33	0.91
1:A:825:MET:HE2	1:A:838:LEU:HD13	1.53	0.91
2:A:2021:AEE:CAG	2:A:2021:AEE:N1	2.36	0.87
1:A:918:ILE:N	1:A:918:ILE:CD1	2.32	0.87
1:A:918:ILE:HD13	1:A:918:ILE:H	1.39	0.86
2:A:2021:AEE:C6	2:A:2021:AEE:HAG	2.06	0.84
1:A:825:MET:CE	1:A:838:LEU:HD13	2.08	0.84
1:A:925:SER:O	1:A:928:GLU:HB2	1.78	0.84
1:A:931:GLU:O	1:A:932:ARG:HD3	1.78	0.83
1:A:918:ILE:HD12	1:A:918:ILE:H	1.44	0.80
2:A:2021:AEE:N1	2:A:2021:AEE:HAG	1.96	0.80
1:A:878:ILE:HD12	1:A:920:ALA:HB1	1.62	0.80
1:A:878:ILE:CD1	1:A:920:ALA:HB1	2.13	0.79
1:A:1006:ASP:C	1:A:1008:ASP:H	1.90	0.75
1:A:924:SER:O	1:A:928:GLU:CG	2.32	0.74
1:A:855:ASP:HA	3:A:3019:HOH:O	1.86	0.74
1:A:724:GLY:HA2	1:A:748:ARG:HA	1.71	0.73
1:A:748:ARG:HE	1:A:749:GLU:HB2	1.54	0.73
1:A:869:TYR:CE2	1:A:871:ALA:HB2	2.23	0.73
1:A:926:ILE:CG2	1:A:927:LEU:H	1.92	0.71
1:A:918:ILE:HG23	1:A:919:PRO:HD2	1.72	0.71
1:A:918:ILE:HG22	1:A:919:PRO:N	2.08	0.69
1:A:882:ALA:HB1	1:A:884:GLU:OE2	1.94	0.68
1:A:918:ILE:CG2	1:A:919:PRO:HD2	2.25	0.67
1:A:804:GLU:OE2	2:A:2021:AEE:HAA1	1.96	0.66
1:A:918:ILE:CG2	1:A:919:PRO:CD	2.74	0.66
1:A:919:PRO:HG2	1:A:922:GLU:HG3	1.78	0.65
1:A:1003:ASP:N	1:A:1004:GLU:OE2	2.30	0.65

Continued on next page...

Continued from previous page...

Atom-1	Atom-2	Interatomic distance (Å)	Clash overlap (Å)
1:A:1004:GLU:N	1:A:1004:GLU:OE2	2.30	0.65
1:A:1013:ALA:O	1:A:1015:GLU:N	2.30	0.65
1:A:1006:ASP:O	1:A:1008:ASP:N	2.29	0.65
1:A:832:ARG:HH12	1:A:865:GLU:HA	1.61	0.64
1:A:1006:ASP:OD1	1:A:1006:ASP:N	2.30	0.64
1:A:1013:ALA:O	1:A:1016:TYR:N	2.30	0.64
1:A:926:ILE:O	1:A:929:LYS:N	2.31	0.63
1:A:825:MET:CE	1:A:838:LEU:HD22	2.28	0.63
1:A:746:GLU:HB3	1:A:787:GLN:HG2	1.79	0.63
1:A:765:VAL:HG13	1:A:833:LEU:HD21	1.81	0.62
1:A:766:MET:CE	3:A:3019:HOH:O	2.46	0.62
1:A:961:PHE:O	1:A:965:ILE:HG13	2.00	0.61
1:A:815:LEU:O	1:A:819:VAL:HG23	2.00	0.61
1:A:925:SER:O	1:A:928:GLU:N	2.33	0.61
1:A:825:MET:HE2	1:A:838:LEU:CD1	2.27	0.61
1:A:908:MET:HG2	1:A:939:CYS:SG	2.41	0.61
1:A:926:ILE:O	1:A:928:GLU:N	2.35	0.60
1:A:844:LEU:HD11	1:A:854:THR:HG21	1.83	0.60
1:A:878:ILE:HD12	1:A:920:ALA:CB	2.32	0.60
1:A:925:SER:O	1:A:928:GLU:CB	2.50	0.58
1:A:1005:GLU:O	1:A:1007:MET:HG2	2.03	0.58
1:A:1012:ASP:O	1:A:1015:GLU:N	2.30	0.58
1:A:926:ILE:O	1:A:927:LEU:C	2.42	0.58
1:A:733:PRO:O	1:A:734:GLU:O	2.23	0.57
1:A:1013:ALA:C	1:A:1015:GLU:H	2.08	0.57
1:A:886:ILE:HG21	1:A:924:SER:HB2	1.86	0.57
1:A:919:PRO:O	1:A:922:GLU:N	2.33	0.57
1:A:766:MET:HE1	3:A:3019:HOH:O	2.04	0.57
1:A:1005:GLU:O	1:A:1007:MET:N	2.37	0.57
1:A:816:ASN:O	1:A:820:GLN:HG3	2.05	0.57
1:A:832:ARG:HH21	1:A:862:LEU:HB3	1.70	0.56
1:A:923:ILE:O	1:A:925:SER:N	2.39	0.56
1:A:918:ILE:HG23	1:A:919:PRO:CD	2.36	0.56
1:A:790:THR:HG22	2:A:2021:AEE:CAD	2.36	0.55
1:A:1012:ASP:O	1:A:1013:ALA:C	2.44	0.55
1:A:791:GLN:NE2	1:A:1012:ASP:OD1	2.36	0.55
1:A:897:VAL:O	1:A:900:TYR:HB3	2.07	0.54
1:A:1013:ALA:C	1:A:1015:GLU:N	2.61	0.54
1:A:920:ALA:HA	1:A:923:ILE:HG13	1.88	0.54
1:A:936:PRO:O	1:A:939:CYS:HB2	2.08	0.54
1:A:776:ARG:HH21	1:A:778:LEU:HD23	1.72	0.53

Continued on next page...

Continued from previous page...

Atom-1	Atom-2	Interatomic distance (Å)	Clash overlap (Å)
1:A:704:LEU:HD11	1:A:780:ILE:HG12	1.89	0.53
1:A:804:GLU:OE1	2:A:2021:AEE:HAA3	2.06	0.53
1:A:909:THR:HG22	1:A:936:PRO:HB3	1.89	0.53
1:A:918:ILE:CG2	1:A:919:PRO:N	2.72	0.53
1:A:893:HIS:O	1:A:896:ASP:HB2	2.10	0.52
1:A:782:LEU:HD23	1:A:786:VAL:HG12	1.92	0.52
1:A:1010:VAL:O	1:A:1010:VAL:HG13	2.10	0.52
1:A:804:GLU:CD	2:A:2021:AEE:CAA	2.61	0.52
1:A:1006:ASP:C	1:A:1008:ASP:N	2.59	0.52
1:A:898:TRP:CE3	1:A:958:ARG:NH1	2.78	0.52
1:A:916:ASP:O	1:A:918:ILE:HD13	2.10	0.51
1:A:923:ILE:O	1:A:924:SER:C	2.49	0.51
2:A:2021:AEE:CAZ	2:A:2021:AEE:N1	2.69	0.51
1:A:825:MET:HE2	1:A:838:LEU:HD22	1.92	0.50
1:A:802:VAL:HA	1:A:809:ILE:CD1	2.41	0.50
1:A:736:GLU:O	1:A:737:LYS:HB3	2.11	0.50
1:A:825:MET:HE3	1:A:838:LEU:HD22	1.94	0.50
1:A:832:ARG:NH1	1:A:865:GLU:HA	2.27	0.50
1:A:737:LYS:CG	1:A:737:LYS:O	2.60	0.50
1:A:1018:ILE:O	1:A:1019:PRO:O	2.30	0.50
1:A:1003:ASP:OD2	1:A:1003:ASP:N	2.44	0.49
1:A:791:GLN:NE2	1:A:1014:ASP:OD1	2.45	0.49
1:A:919:PRO:O	1:A:922:GLU:HB2	2.12	0.49
1:A:811:SER:OG	1:A:975:PRO:HB2	2.13	0.49
1:A:763:ALA:HB2	1:A:788:LEU:HD21	1.96	0.48
1:A:878:ILE:HD13	1:A:920:ALA:HB1	1.92	0.48
1:A:704:LEU:HD21	1:A:780:ILE:HD11	1.95	0.48
1:A:748:ARG:HH21	1:A:749:GLU:HB3	1.79	0.48
1:A:804:GLU:OE2	2:A:2021:AEE:CAA	2.62	0.47
1:A:925:SER:O	1:A:926:ILE:C	2.52	0.47
1:A:917:GLY:O	1:A:918:ILE:O	2.31	0.47
1:A:712:PHE:HB2	1:A:730:LEU:O	2.14	0.47
1:A:802:VAL:HA	1:A:809:ILE:HD11	1.95	0.47
1:A:919:PRO:HD2	1:A:922:GLU:HB2	1.96	0.47
1:A:732:ILE:O	1:A:733:PRO:O	2.33	0.47
1:A:877:PRO:O	1:A:881:MET:HG3	2.14	0.47
1:A:918:ILE:HG22	1:A:919:PRO:CD	2.41	0.47
1:A:799:LEU:O	1:A:802:VAL:HG22	2.15	0.47
1:A:736:GLU:OE2	1:A:1016:TYR:HE2	1.98	0.46
1:A:720:SER:HA	1:A:725:THR:HG22	1.96	0.46
1:A:898:TRP:HE3	1:A:958:ARG:NH1	2.14	0.45

Continued on next page...

Continued from previous page...

Atom-1	Atom-2	Interatomic distance (Å)	Clash overlap (Å)
1:A:879:LYS:HB2	1:A:880:TRP:CE3	2.51	0.45
1:A:1003:ASP:C	1:A:1004:GLU:OE2	2.55	0.45
1:A:1018:ILE:O	1:A:1019:PRO:C	2.54	0.45
1:A:849:GLN:HG2	1:A:849:GLN:H	1.59	0.45
1:A:720:SER:HA	1:A:725:THR:HA	1.99	0.45
1:A:945:MET:O	1:A:949:LYS:HG3	2.17	0.45
1:A:902:VAL:O	1:A:906:GLU:HG3	2.17	0.45
1:A:926:ILE:C	1:A:928:GLU:N	2.69	0.44
1:A:918:ILE:HA	1:A:919:PRO:HD3	1.69	0.44
1:A:736:GLU:OE2	1:A:1016:TYR:CE2	2.70	0.44
1:A:778:LEU:HB2	1:A:789:ILE:O	2.18	0.44
1:A:792:LEU:O	1:A:794:PRO:HD3	2.16	0.44
1:A:748:ARG:HB3	1:A:749:GLU:H	1.70	0.44
1:A:733:PRO:O	1:A:734:GLU:C	2.56	0.44
1:A:1014:ASP:OD1	1:A:1014:ASP:N	2.47	0.43
1:A:766:MET:HE2	3:A:3019:HOH:O	2.14	0.43
1:A:740:ILE:O	1:A:742:VAL:HG13	2.19	0.43
1:A:716:LYS:HE2	1:A:716:LYS:HB2	1.62	0.43
1:A:905:TRP:O	1:A:909:THR:HG23	2.19	0.42
1:A:861:LEU:HD23	1:A:862:LEU:N	2.35	0.42
1:A:923:ILE:C	1:A:925:SER:N	2.71	0.42
1:A:825:MET:HE3	1:A:838:LEU:HB2	2.01	0.42
1:A:900:TYR:O	1:A:904:VAL:HG23	2.20	0.42
1:A:854:THR:HG23	1:A:855:ASP:N	2.34	0.41
1:A:925:SER:O	1:A:926:ILE:O	2.38	0.41
1:A:733:PRO:HB2	1:A:736:GLU:HB2	2.03	0.41
1:A:972:ALA:O	1:A:975:PRO:HD3	2.20	0.41
1:A:941:ILE:O	1:A:945:MET:HB2	2.21	0.41
1:A:886:ILE:CG2	1:A:924:SER:HB2	2.51	0.41
1:A:915:TYR:O	1:A:916:ASP:C	2.60	0.40

There are no symmetry-related clashes.

5.3 Torsion angles ⓘ

5.3.1 Protein backbone ⓘ

In the following table, the Percentiles column shows the percent Ramachandran outliers of the chain as a percentile score with respect to all X-ray entries followed by that with respect to entries of similar resolution.

The Analysed column shows the number of residues for which the backbone conformation was analysed, and the total number of residues.

Mol	Chain	Analysed	Favoured	Allowed	Outliers	Percentiles	
1	A	302/327 (92%)	256 (85%)	28 (9%)	18 (6%)	2	11

All (18) Ramachandran outliers are listed below:

Mol	Chain	Res	Type
1	A	733	PRO
1	A	734	GLU
1	A	919	PRO
1	A	926	ILE
1	A	1007	MET
1	A	916	ASP
1	A	927	LEU
1	A	982	GLN
1	A	1014	ASP
1	A	748	ARG
1	A	924	SER
1	A	1004	GLU
1	A	1019	PRO
1	A	747	LEU
1	A	864	ALA
1	A	1013	ALA
1	A	807	ASP
1	A	918	ILE

5.3.2 Protein sidechains ⓘ

In the following table, the Percentiles column shows the percent sidechain outliers of the chain as a percentile score with respect to all X-ray entries followed by that with respect to entries of similar resolution.

The Analysed column shows the number of residues for which the sidechain conformation was analysed, and the total number of residues.

Mol	Chain	Analysed	Rotameric	Outliers	Percentiles	
1	A	265/287 (92%)	240 (91%)	25 (9%)	11	39

All (25) residues with a non-rotameric sidechain are listed below:

Mol	Chain	Res	Type
1	A	697	GLU

Continued on next page...

Continued from previous page...

Mol	Chain	Res	Type
1	A	700	ASN
1	A	716	LYS
1	A	748	ARG
1	A	753	PRO
1	A	754	LYS
1	A	757	LYS
1	A	786	VAL
1	A	797	CYS
1	A	807	ASP
1	A	808	ASN
1	A	849	GLN
1	A	855	ASP
1	A	866	GLU
1	A	884	GLU
1	A	908	MET
1	A	918	ILE
1	A	921	SER
1	A	962	ARG
1	A	973	ARG
1	A	1003	ASP
1	A	1006	ASP
1	A	1008	ASP
1	A	1009	ASP
1	A	1014	ASP

Some sidechains can be flipped to improve hydrogen bonding and reduce clashes. All (4) such sidechains are listed below:

Mol	Chain	Res	Type
1	A	700	ASN
1	A	787	GLN
1	A	816	ASN
1	A	893	HIS

5.3.3 RNA ⓘ

There are no RNA molecules in this entry.

5.4 Non-standard residues in protein, DNA, RNA chains ⓘ

There are no non-standard protein/DNA/RNA residues in this entry.

5.5 Carbohydrates [i](#)

There are no carbohydrates in this entry.

5.6 Ligand geometry [i](#)

1 ligand is modelled in this entry.

In the following table, the Counts columns list the number of bonds (or angles) for which Mogul statistics could be retrieved, the number of bonds (or angles) that are observed in the model and the number of bonds (or angles) that are defined in the chemical component dictionary. The Link column lists molecule types, if any, to which the group is linked. The Z score for a bond length (or angle) is the number of standard deviations the observed value is removed from the expected value. A bond length (or angle) with $|Z| > 2$ is considered an outlier worth inspection. RMSZ is the root-mean-square of all Z scores of the bond lengths (or angles).

Mol	Type	Chain	Res	Link	Bond lengths			Bond angles		
					Counts	RMSZ	$\# Z > 2$	Counts	RMSZ	$\# Z > 2$
2	AEE	A	2021	-	35,37,37	1.76	5 (14%)	41,51,51	2.10	6 (14%)

In the following table, the Chirals column lists the number of chiral outliers, the number of chiral centers analysed, the number of these observed in the model and the number defined in the chemical component dictionary. Similar counts are reported in the Torsion and Rings columns. '-' means no outliers of that kind were identified.

Mol	Type	Chain	Res	Link	Chirals	Torsions	Rings
2	AEE	A	2021	-	-	0/18/28/28	0/5/5/5

All (5) bond length outliers are listed below:

Mol	Chain	Res	Type	Atoms	Z	Observed(Å)	Ideal(Å)
2	A	2021	AEE	CAY-CBA	-6.61	1.38	1.48
2	A	2021	AEE	C6-C5	-5.70	1.38	1.44
2	A	2021	AEE	CAM-CBA	-3.88	1.32	1.40
2	A	2021	AEE	C4-N3	-2.23	1.33	1.37
2	A	2021	AEE	C5-C4	-2.16	1.37	1.43

All (6) bond angle outliers are listed below:

Mol	Chain	Res	Type	Atoms	Z	Observed(°)	Ideal(°)
2	A	2021	AEE	N3-C2-N1	-9.79	121.40	128.89
2	A	2021	AEE	C5-C6-N1	-2.76	119.49	121.46
2	A	2021	AEE	CAM-CBA-CAY	-2.74	125.59	129.40
2	A	2021	AEE	CAX-CAS-NBG	-2.56	108.21	113.16

Continued on next page...

Continued from previous page...

Mol	Chain	Res	Type	Atoms	Z	Observed(°)	Ideal(°)
2	A	2021	AEE	CAY-CBA-NAW	3.41	125.29	120.62
2	A	2021	AEE	C2-N1-C6	5.70	120.59	116.48

There are no chirality outliers.

There are no torsion outliers.

There are no ring outliers.

1 monomer is involved in 12 short contacts:

Mol	Chain	Res	Type	Clashes	Symm-Clashes
2	A	2021	AEE	12	0

5.7 Other polymers [i](#)

There are no such residues in this entry.

5.8 Polymer linkage issues [i](#)

There are no chain breaks in this entry.

6 Fit of model and data [i](#)

6.1 Protein, DNA and RNA chains [i](#)

In the following table, the column labelled ‘#RSRZ> 2’ contains the number (and percentage) of RSRZ outliers, followed by percent RSRZ outliers for the chain as percentile scores relative to all X-ray entries and entries of similar resolution. The OWAB column contains the minimum, median, 95th percentile and maximum values of the occupancy-weighted average B-factor per residue. The column labelled ‘Q< 0.9’ lists the number of (and percentage) of residues with an average occupancy less than 0.9.

Mol	Chain	Analysed	<RSRZ>	#RSRZ>2			OWAB(Å ²)	Q<0.9
1	A	306/327 (93%)	-0.31	10 (3%)	50	26	24, 48, 96, 107	8 (2%)

All (10) RSRZ outliers are listed below:

Mol	Chain	Res	Type	RSRZ
1	A	863	GLY	3.5
1	A	722	ALA	2.7
1	A	864	ALA	2.6
1	A	867	LYS	2.5
1	A	720	SER	2.4
1	A	866	GLU	2.2
1	A	868	GLU	2.2
1	A	753	PRO	2.2
1	A	865	GLU	2.0
1	A	1019	PRO	2.0

6.2 Non-standard residues in protein, DNA, RNA chains [i](#)

There are no non-standard protein/DNA/RNA residues in this entry.

6.3 Carbohydrates [i](#)

There are no carbohydrates in this entry.

6.4 Ligands [i](#)

In the following table, the Atoms column lists the number of modelled atoms in the group and the number defined in the chemical component dictionary. LLDF column lists the quality of electron density of the group with respect to its neighbouring residues in protein, DNA or RNA chains. The B-factors column lists the minimum, median, 95th percentile and maximum values of B factors

of atoms in the group. The column labelled 'Q< 0.9' lists the number of atoms with occupancy less than 0.9.

Mol	Type	Chain	Res	Atoms	RSCC	RSR	LLDF	B-factors(\AA^2)	Q<0.9
2	AEE	A	2021	33/33	0.89	0.21	0.89	45,51,65,66	0

6.5 Other polymers [i](#)

There are no such residues in this entry.