



wwPDB X-ray Structure Validation Summary Report ⓘ

Jan 31, 2016 – 08:12 PM GMT

PDB ID : 1J90
Title : Crystal Structure of Drosophila Deoxyribonucleoside Kinase
Authors : Johansson, K.; Ramaswamy, S.; Ljungkrantz, C.; Knecht, W.; Piskur, J.;
Munch-Petersen, B.; Eriksson, S.; Eklund, H.
Deposited on : 2001-05-23
Resolution : 2.56 Å(reported)

This is a wwPDB X-ray Structure Validation Summary Report for a publicly released PDB entry.
We welcome your comments at validation@mail.wwpdb.org
A user guide is available at
<http://wwpdb.org/validation/2016/XrayValidationReportHelp>
with specific help available everywhere you see the ⓘ symbol.

The following versions of software and data (see [references ⓘ](#)) were used in the production of this report:

MolProbity : 4.02b-467
Mogul : 1.7 (RC4), CSD as536be (2015)
Xtriage (Phenix) : 1.9-1692
EDS : rb-20026688
Percentile statistics : 20151230.v01 (using entries in the PDB archive December 30th 2015)
Refmac : 5.8.0135
CCP4 : 6.5.0
Ideal geometry (proteins) : Engh & Huber (2001)
Ideal geometry (DNA, RNA) : Parkinson et al. (1996)
Validation Pipeline (wwPDB-VP) : trunk26865

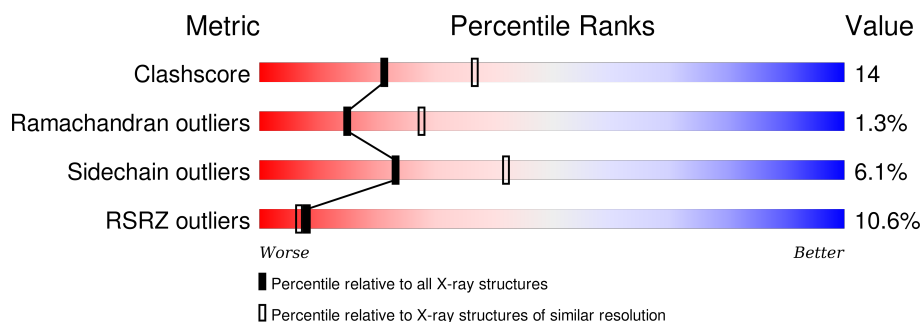
1 Overall quality at a glance

The following experimental techniques were used to determine the structure:

X-RAY DIFFRACTION

The reported resolution of this entry is 2.56 Å.

Percentile scores (ranging between 0-100) for global validation metrics of the entry are shown in the following graphic. The table shows the number of entries on which the scores are based.



Metric	Whole archive (#Entries)	Similar resolution (#Entries, resolution range(Å))
Clashscore	102246	3729 (2.60-2.52)
Ramachandran outliers	100387	3673 (2.60-2.52)
Sidechain outliers	100360	3673 (2.60-2.52)
RSRZ outliers	91569	3333 (2.60-2.52)

The table below summarises the geometric issues observed across the polymeric chains and their fit to the electron density. The red, orange, yellow and green segments on the lower bar indicate the fraction of residues that contain outliers for ≥ 3 , 2, 1 and 0 types of geometric quality criteria. A grey segment represents the fraction of residues that are not modelled. The numeric value for each fraction is indicated below the corresponding segment, with a dot representing fractions $\leq 5\%$. The upper red bar (where present) indicates the fraction of residues that have poor fit to the electron density. The numeric value is given above the bar.

Mol	Chain	Length	Quality of chain
1	A	230	
1	B	230	

2 Entry composition [i](#)

There are 4 unique types of molecules in this entry. The entry contains 3404 atoms, of which 0 are hydrogens and 0 are deuteriums.

In the tables below, the ZeroOcc column contains the number of atoms modelled with zero occupancy, the AltConf column contains the number of residues with at least one atom in alternate conformation and the Trace column contains the number of residues modelled with at most 2 atoms.

- Molecule 1 is a protein called Deoxyribonucleoside kinase.

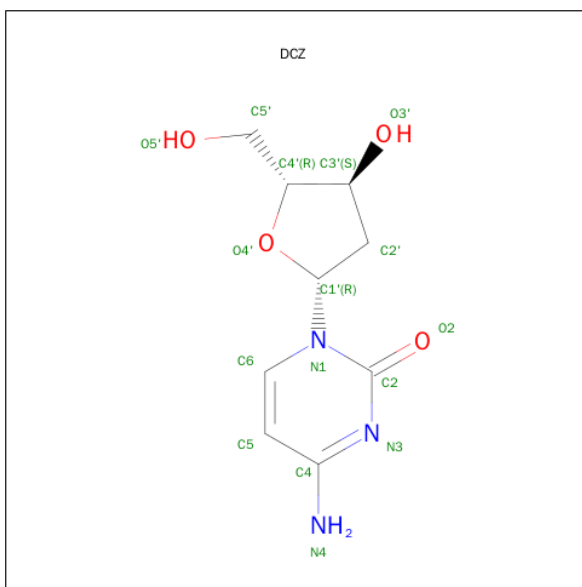
Mol	Chain	Residues	Atoms					ZeroOcc	AltConf	Trace
1	A	195	Total	C	N	O	S	0	0	0
			1627	1038	280	299	10			
1	B	191	Total	C	N	O	S	0	0	0
			1594	1017	275	292	10			

- Molecule 2 is SULFATE ION (three-letter code: SO4) (formula: O₄S).



Mol	Chain	Residues	Atoms			ZeroOcc	AltConf
2	A	1	Total	O	S	0	0
			5	4	1		
2	B	1	Total	O	S	0	0
			5	4	1		

- Molecule 3 is 2'-DEOXYCYTIDINE (three-letter code: DCZ) (formula: C₉H₁₃N₃O₄).



Mol	Chain	Residues	Atoms				ZeroOcc	AltConf
3	A	1	Total	C	N	O	0	0
			16	9	3	4		
3	B	1	Total	C	N	O	0	0
			16	9	3	4		

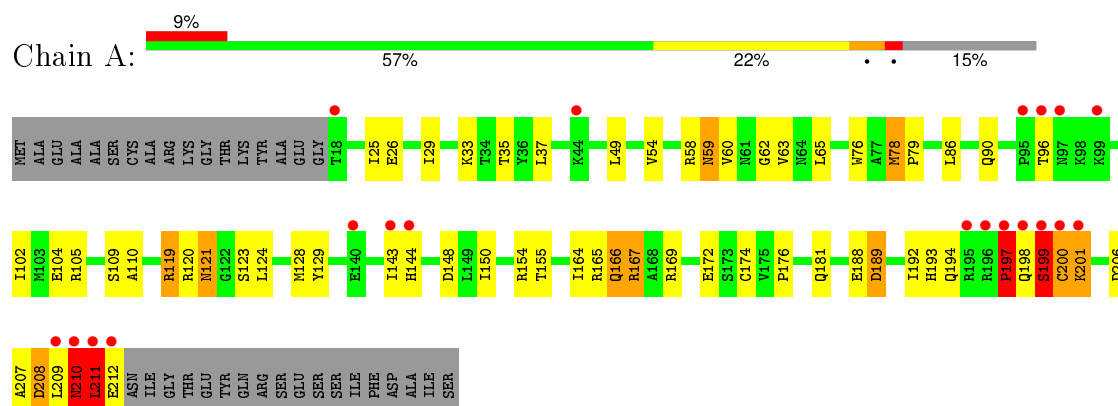
- Molecule 4 is water.

Mol	Chain	Residues	Atoms		ZeroOcc	AltConf
4	A	78	Total	O	0	0
			78	78		
4	B	63	Total	O	0	0
			63	63		

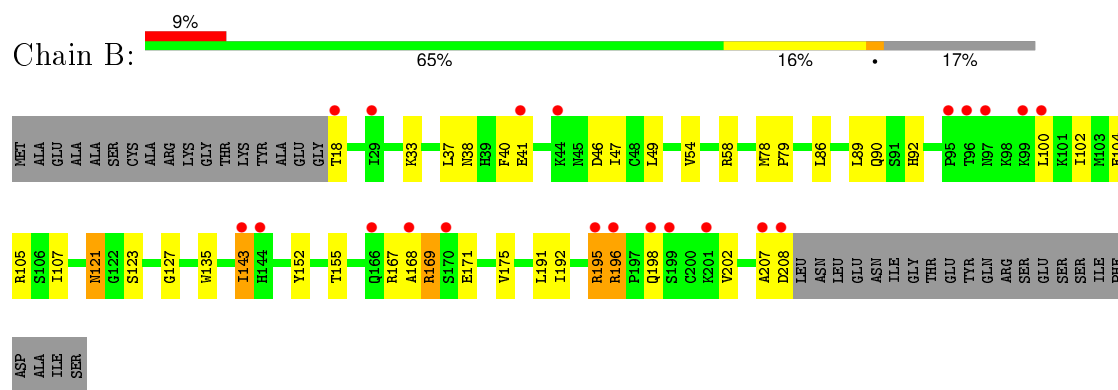
3 Residue-property plots [i](#)

These plots are drawn for all protein, RNA and DNA chains in the entry. The first graphic for a chain summarises the proportions of errors displayed in the second graphic. The second graphic shows the sequence view annotated by issues in geometry and electron density. Residues are color-coded according to the number of geometric quality criteria for which they contain at least one outlier: green = 0, yellow = 1, orange = 2 and red = 3 or more. A red dot above a residue indicates a poor fit to the electron density ($RSRZ > 2$). Stretches of 2 or more consecutive residues without any outlier are shown as a green connector. Residues present in the sample, but not in the model, are shown in grey.

• Molecule 1: Deoxyribonucleoside kinase



• Molecule 1: Deoxyribonucleoside kinase



4 Data and refinement statistics

Property	Value	Source
Space group	P 21 21 2	Depositor
Cell constants a, b, c, α , β , γ	119.46 Å 60.75 Å 67.27 Å 90.00° 90.00° 90.00°	Depositor
Resolution (Å)	20.00 – 2.56 19.84 – 2.56	Depositor EDS
% Data completeness (in resolution range)	98.2 (20.00-2.56) 98.4 (19.84-2.56)	Depositor EDS
R_{merge}	0.08	Depositor
R_{sym}	(Not available)	Depositor
$\langle I/\sigma(I) \rangle$ ¹	1.84 (at 2.56 Å)	Xtriage
Refinement program	REFMAC	Depositor
R, R_{free}	0.238 , 0.258 0.235 , (Not available)	Depositor DCC
R_{free} test set	No test flags present.	DCC
Wilson B-factor (Å ²)	41.8	Xtriage
Anisotropy	0.787	Xtriage
Bulk solvent k_{sol} (e/Å ³), B_{sol} (Å ²)	0.37 , 58.2	EDS
Estimated twinning fraction	No twinning to report.	Xtriage
L-test for twinning ²	$\langle L \rangle = 0.48$, $\langle L^2 \rangle = 0.31$	Xtriage
Outliers	0 of 16081 reflections	Xtriage
F_o, F_c correlation	0.92	EDS
Total number of atoms	3404	wwPDB-VP
Average B, all atoms (Å ²)	43.0	wwPDB-VP

Xtriage's analysis on translational NCS is as follows: *The largest off-origin peak in the Patterson function is 5.81% of the height of the origin peak. No significant pseudotranslation is detected.*

¹Intensities estimated from amplitudes.

²Theoretical values of $\langle |L| \rangle$, $\langle L^2 \rangle$ for acentric reflections are 0.5, 0.375 respectively for untwinned datasets, and 0.333, 0.2 for perfectly twinned datasets.

5 Model quality

5.1 Standard geometry

Bond lengths and bond angles in the following residue types are not validated in this section: DCZ, SO4

The Z score for a bond length (or angle) is the number of standard deviations the observed value is removed from the expected value. A bond length (or angle) with $|Z| > 5$ is considered an outlier worth inspection. RMSZ is the root-mean-square of all Z scores of the bond lengths (or angles).

Mol	Chain	Bond lengths		Bond angles	
		RMSZ	$\# Z > 5$	RMSZ	$\# Z > 5$
1	A	0.38	0/1664	0.91	9/2250 (0.4%)
1	B	0.27	0/1631	0.60	1/2205 (0.0%)
All	All	0.33	0/3295	0.77	10/4455 (0.2%)

Chiral center outliers are detected by calculating the chiral volume of a chiral center and verifying if the center is modelled as a planar moiety or with the opposite hand. A planarity outlier is detected by checking planarity of atoms in a peptide group, atoms in a mainchain group or atoms of a sidechain that are expected to be planar.

Mol	Chain	#Chirality outliers	#Planarity outliers
1	A	1	0

There are no bond length outliers.

The worst 5 of 10 bond angle outliers are listed below:

Mol	Chain	Res	Type	Atoms	Z	Observed(°)	Ideal(°)
1	A	210	ASN	N-CA-C	-14.73	71.24	111.00
1	A	211	LEU	N-CA-C	11.31	141.55	111.00
1	A	199	SER	CA-C-N	9.46	138.02	117.20
1	A	199	SER	O-C-N	-7.35	110.94	122.70
1	A	197	PRO	CA-N-CD	-6.58	102.29	111.50

All (1) chirality outliers are listed below:

Mol	Chain	Res	Type	Atom
1	A	211	LEU	CA

There are no planarity outliers.

5.2 Too-close contacts

In the following table, the Non-H and H(model) columns list the number of non-hydrogen atoms and hydrogen atoms in the chain respectively. The H(added) column lists the number of hydrogen atoms added and optimized by MolProbity. The Clashes column lists the number of clashes within the asymmetric unit, whereas Symm-Clashes lists symmetry related clashes.

Mol	Chain	Non-H	H(model)	H(added)	Clashes	Symm-Clashes
1	A	1627	0	1620	62	0
1	B	1594	0	1586	32	0
2	A	5	0	0	0	0
2	B	5	0	0	0	0
3	A	16	0	12	0	0
3	B	16	0	12	0	0
4	A	78	0	0	5	0
4	B	63	0	0	1	0
All	All	3404	0	3230	92	0

The all-atom clashscore is defined as the number of clashes found per 1000 atoms (including hydrogen atoms). The all-atom clashscore for this structure is 14.

The worst 5 of 92 close contacts within the same asymmetric unit are listed below, sorted by their clash magnitude.

Atom-1	Atom-2	Interatomic distance (Å)	Clash overlap (Å)
1:A:35:THR:CG2	1:A:211:LEU:HD21	1.72	1.19
1:A:35:THR:HG21	1:A:211:LEU:CD2	1.77	1.15
1:A:25:ILE:CD1	1:A:37:LEU:HD21	1.82	1.09
1:A:25:ILE:HD12	1:A:37:LEU:HD21	1.28	1.09
1:B:155:THR:HG22	1:B:207:ALA:HB3	1.39	1.02

There are no symmetry-related clashes.

5.3 Torsion angles

5.3.1 Protein backbone

In the following table, the Percentiles column shows the percent Ramachandran outliers of the chain as a percentile score with respect to all X-ray entries followed by that with respect to entries of similar resolution.

The Analysed column shows the number of residues for which the backbone conformation was analysed, and the total number of residues.

Mol	Chain	Analysed	Favoured	Allowed	Outliers	Percentiles	
1	A	193/230 (84%)	174 (90%)	16 (8%)	3 (2%)	12	22
1	B	189/230 (82%)	173 (92%)	14 (7%)	2 (1%)	17	33
All	All	382/460 (83%)	347 (91%)	30 (8%)	5 (1%)	15	28

All (5) Ramachandran outliers are listed below:

Mol	Chain	Res	Type
1	A	201	LYS
1	A	211	LEU
1	B	143	ILE
1	A	199	SER
1	B	168	ALA

5.3.2 Protein sidechains ⓘ

In the following table, the Percentiles column shows the percent sidechain outliers of the chain as a percentile score with respect to all X-ray entries followed by that with respect to entries of similar resolution.

The Analysed column shows the number of residues for which the sidechain conformation was analysed, and the total number of residues.

Mol	Chain	Analysed	Rotameric	Outliers	Percentiles	
1	A	182/208 (88%)	168 (92%)	14 (8%)	16	29
1	B	178/208 (86%)	170 (96%)	8 (4%)	34	58
All	All	360/416 (86%)	338 (94%)	22 (6%)	23	42

5 of 22 residues with a non-rotameric sidechain are listed below:

Mol	Chain	Res	Type
1	A	197	PRO
1	A	208	ASP
1	B	196	ARG
1	A	198	GLN
1	A	200	CYS

Some sidechains can be flipped to improve hydrogen bonding and reduce clashes. 5 of 12 such sidechains are listed below:

Mol	Chain	Res	Type
1	A	210	ASN

Continued on next page...

Continued from previous page...

Mol	Chain	Res	Type
1	B	38	ASN
1	B	126	GLN
1	A	198	GLN
1	B	121	ASN

5.3.3 RNA [i](#)

There are no RNA molecules in this entry.

5.4 Non-standard residues in protein, DNA, RNA chains [i](#)

There are no non-standard protein/DNA/RNA residues in this entry.

5.5 Carbohydrates [i](#)

There are no carbohydrates in this entry.

5.6 Ligand geometry [i](#)

4 ligands are modelled in this entry.

In the following table, the Counts columns list the number of bonds (or angles) for which Mogul statistics could be retrieved, the number of bonds (or angles) that are observed in the model and the number of bonds (or angles) that are defined in the chemical component dictionary. The Link column lists molecule types, if any, to which the group is linked. The Z score for a bond length (or angle) is the number of standard deviations the observed value is removed from the expected value. A bond length (or angle) with $|Z| > 2$ is considered an outlier worth inspection. RMSZ is the root-mean-square of all Z scores of the bond lengths (or angles).

Mol	Type	Chain	Res	Link	Bond lengths			Bond angles		
					Counts	RMSZ	$\# Z > 2$	Counts	RMSZ	$\# Z > 2$
2	SO4	A	300	-	4,4,4	0.31	0	6,6,6	0.18	0
3	DCZ	A	400	-	13,17,17	0.98	0	18,24,24	1.45	3 (16%)
2	SO4	B	301	-	4,4,4	0.25	0	6,6,6	0.16	0
3	DCZ	B	401	-	13,17,17	0.90	0	18,24,24	1.49	3 (16%)

In the following table, the Chirals column lists the number of chiral outliers, the number of chiral centers analysed, the number of these observed in the model and the number defined in the chemical component dictionary. Similar counts are reported in the Torsion and Rings columns. '-' means no outliers of that kind were identified.

Mol	Type	Chain	Res	Link	Chirals	Torsions	Rings
2	SO4	A	300	-	-	0/0/0/0	0/0/0/0
3	DCZ	A	400	-	-	0/2/18/18	0/2/2/2
2	SO4	B	301	-	-	0/0/0/0	0/0/0/0
3	DCZ	B	401	-	-	0/2/18/18	0/2/2/2

There are no bond length outliers.

The worst 5 of 6 bond angle outliers are listed below:

Mol	Chain	Res	Type	Atoms	Z	Observed($^{\circ}$)	Ideal($^{\circ}$)
3	A	400	DCZ	C5'-C4'-C3'	-2.05	109.34	114.80
3	B	401	DCZ	N4-C4-N3	2.16	120.43	116.50
3	A	400	DCZ	O5'-C5'-C4'	2.53	119.69	111.33
3	B	401	DCZ	O5'-C5'-C4'	2.69	120.23	111.33
3	A	400	DCZ	C2-N3-C4	3.62	120.72	115.61

There are no chirality outliers.

There are no torsion outliers.

There are no ring outliers.

No monomer is involved in short contacts.

5.7 Other polymers [i](#)

There are no such residues in this entry.

5.8 Polymer linkage issues [i](#)

There are no chain breaks in this entry.

6 Fit of model and data [i](#)

6.1 Protein, DNA and RNA chains [i](#)

In the following table, the column labelled ‘#RSRZ> 2’ contains the number (and percentage) of RSRZ outliers, followed by percent RSRZ outliers for the chain as percentile scores relative to all X-ray entries and entries of similar resolution. The OWAB column contains the minimum, median, 95th percentile and maximum values of the occupancy-weighted average B-factor per residue. The column labelled ‘Q< 0.9’ lists the number of (and percentage) of residues with an average occupancy less than 0.9.

Mol	Chain	Analysed	<RSRZ>	#RSRZ>2	OWAB(Å ²)	Q<0.9
1	A	195/230 (84%)	0.36	20 (10%) 9 7	27, 39, 63, 69	0
1	B	191/230 (83%)	0.59	21 (10%) 7 6	28, 43, 65, 69	0
All	All	386/460 (83%)	0.47	41 (10%) 8 7	27, 41, 64, 69	0

The worst 5 of 41 RSRZ outliers are listed below:

Mol	Chain	Res	Type	RSRZ
1	A	210	ASN	7.3
1	B	18	THR	5.1
1	A	198	GLN	4.8
1	A	209	LEU	4.5
1	A	196	ARG	3.9

6.2 Non-standard residues in protein, DNA, RNA chains [i](#)

There are no non-standard protein/DNA/RNA residues in this entry.

6.3 Carbohydrates [i](#)

There are no carbohydrates in this entry.

6.4 Ligands [i](#)

In the following table, the Atoms column lists the number of modelled atoms in the group and the number defined in the chemical component dictionary. LLDF column lists the quality of electron density of the group with respect to its neighbouring residues in protein, DNA or RNA chains. The B-factors column lists the minimum, median, 95th percentile and maximum values of B factors of atoms in the group. The column labelled ‘Q< 0.9’ lists the number of atoms with occupancy less than 0.9.

Mol	Type	Chain	Res	Atoms	RSCC	RSR	LLDF	B-factors(\AA^2)	Q<0.9
3	DCZ	B	401	16/16	0.91	0.21	0.36	34,36,40,43	0
3	DCZ	A	400	16/16	0.95	0.14	-0.06	29,30,34,38	0
2	SO4	A	300	5/5	0.96	0.14	-0.72	51,52,53,54	0
2	SO4	B	301	5/5	0.98	0.08	-2.15	39,40,40,40	0

6.5 Other polymers [i](#)

There are no such residues in this entry.