



Full wwPDB X-ray Structure Validation Report ⓘ

Feb 1, 2016 – 05:44 PM GMT

PDB ID : 4JBT
Title : The 2.2 Å crystal structure of CYP154C5 from *Nocardia farcinica* in complex with androstenedione
Authors : Herzog, K.; Hoffmann, K.M.
Deposited on : 2013-02-20
Resolution : 2.20 Å(reported)

This is a Full wwPDB X-ray Structure Validation Report for a publicly released PDB entry.
We welcome your comments at validation@mail.wwpdb.org
A user guide is available at
<http://wwpdb.org/validation/2016/XrayValidationReportHelp>
with specific help available everywhere you see the ⓘ symbol.

The following versions of software and data (see [references ⓘ](#)) were used in the production of this report:

MolProbity : 4.02b-467
Mogul : 1.7 (RC4), CSD as536be (2015)
Xtriage (Phenix) : 1.9-1692
EDS : rb-20026688
Percentile statistics : 20151230.v01 (using entries in the PDB archive December 30th 2015)
Refmac : 5.8.0135
CCP4 : 6.5.0
Ideal geometry (proteins) : Engh & Huber (2001)
Ideal geometry (DNA, RNA) : Parkinson et al. (1996)
Validation Pipeline (wwPDB-VP) : trunk26865

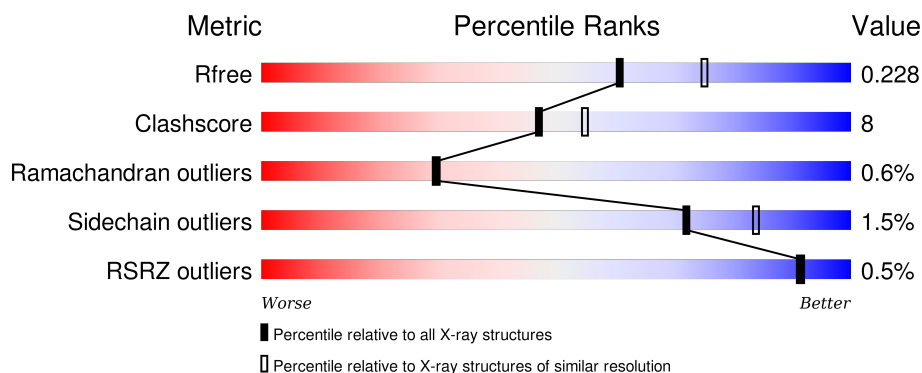
1 Overall quality at a glance ⓘ

The following experimental techniques were used to determine the structure:

X-RAY DIFFRACTION

The reported resolution of this entry is 2.20 Å.

Percentile scores (ranging between 0-100) for global validation metrics of the entry are shown in the following graphic. The table shows the number of entries on which the scores are based.



Metric	Whole archive (#Entries)	Similar resolution (#Entries, resolution range(Å))
R_{free}	91344	3774 (2.20-2.20)
Clashscore	102246	4477 (2.20-2.20)
Ramachandran outliers	100387	4404 (2.20-2.20)
Sidechain outliers	100360	4405 (2.20-2.20)
RSRZ outliers	91569	3781 (2.20-2.20)

The table below summarises the geometric issues observed across the polymeric chains and their fit to the electron density. The red, orange, yellow and green segments on the lower bar indicate the fraction of residues that contain outliers for ≥ 3 , 2, 1 and 0 types of geometric quality criteria. A grey segment represents the fraction of residues that are not modelled. The numeric value for each fraction is indicated below the corresponding segment, with a dot representing fractions $\leq 5\%$. The upper red bar (where present) indicates the fraction of residues that have poor fit to the electron density. The numeric value is given above the bar.

Mol	Chain	Length	Quality of chain
1	A	410	 85% 12% ...
1	B	410	 86% 12% ..

The following table lists non-polymeric compounds, carbohydrate monomers and non-standard residues in protein, DNA, RNA chains that are outliers for geometric or electron-density-fit criteria:

Mol	Type	Chain	Res	Chirality	Geometry	Clashes	Electron density
5	FMT	B	508	-	-	X	-

2 Entry composition [i](#)

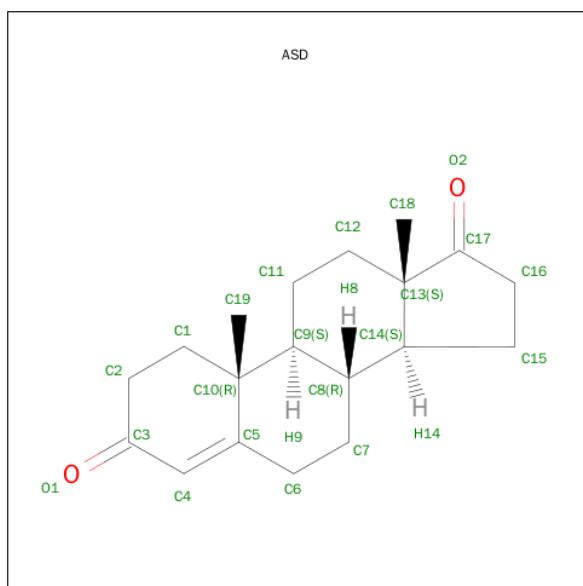
There are 7 unique types of molecules in this entry. The entry contains 6734 atoms, of which 0 are hydrogens and 0 are deuteriums.

In the tables below, the ZeroOcc column contains the number of atoms modelled with zero occupancy, the AltConf column contains the number of residues with at least one atom in alternate conformation and the Trace column contains the number of residues modelled with at most 2 atoms.

- Molecule 1 is a protein called Cytochrome P450 monooxygenase.

Mol	Chain	Residues	Atoms					ZeroOcc	AltConf	Trace
1	A	407	Total	C	N	O	S	0	0	0
			3133	1991	547	584	11			
1	B	407	Total	C	N	O	S	0	0	0
			3135	1989	553	582	11			

- Molecule 2 is 4-ANDROSTENE-3-17-DIONE (three-letter code: ASD) (formula: $C_{19}H_{26}O_2$).



Mol	Chain	Residues	Atoms			ZeroOcc	AltConf
2	A	1	Total	C	O	0	0
			21	19	2		
2	B	1	Total	C	O	0	0
			21	19	2		

- Molecule 3 is PROTOPORPHYRIN IX CONTAINING FE (three-letter code: HEM) (formula: $C_{34}H_{32}FeN_4O_4$).



Mol	Chain	Residues	Atoms					ZeroOcc	AltConf
3	A	1	Total	C	Fe	N	O	0	0
			43	34	1	4	4		
3	B	1	Total	C	Fe	N	O	0	0
			43	34	1	4	4		

- Molecule 4 is MAGNESIUM ION (three-letter code: MG) (formula: Mg).

Mol	Chain	Residues	Atoms		ZeroOcc	AltConf
4	B	1	Total	Mg	0	0
			1	1		
4	A	1	Total	Mg	0	0
			1	1		

- Molecule 5 is FORMIC ACID (three-letter code: FMT) (formula: CH₂O₂).



Mol	Chain	Residues	Atoms	ZeroOcc	AltConf
5	A	1	Total C O 3 1 2	0	0
5	B	1	Total C O 3 1 2	0	0
5	B	1	Total C O 3 1 2	0	0
5	B	1	Total C O 3 1 2	0	0

- Molecule 6 is POTASSIUM ION (three-letter code: K) (formula: K).

Mol	Chain	Residues	Atoms	ZeroOcc	AltConf
6	B	2	Total K 2 2	0	0
6	A	1	Total K 1 1	0	0

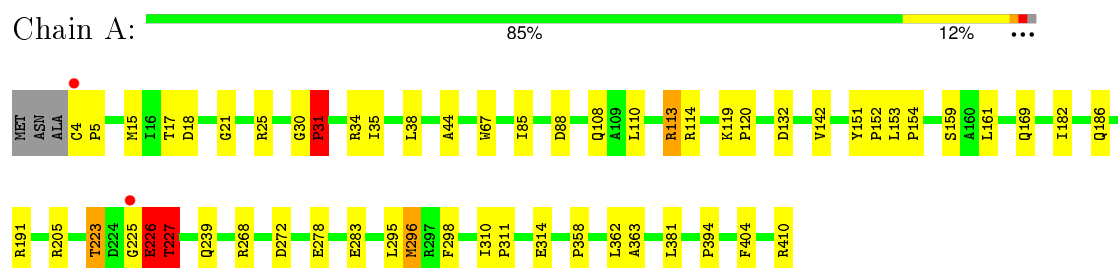
- Molecule 7 is water.

Mol	Chain	Residues	Atoms	ZeroOcc	AltConf
7	A	166	Total O 166 166	0	0
7	B	155	Total O 155 155	0	0

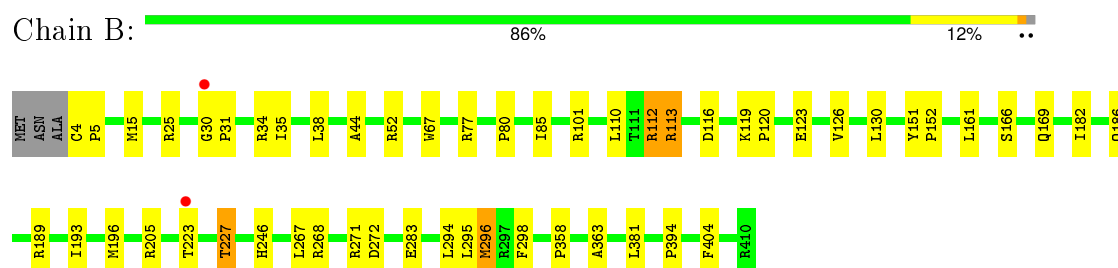
3 Residue-property plots

These plots are drawn for all protein, RNA and DNA chains in the entry. The first graphic for a chain summarises the proportions of errors displayed in the second graphic. The second graphic shows the sequence view annotated by issues in geometry and electron density. Residues are color-coded according to the number of geometric quality criteria for which they contain at least one outlier: green = 0, yellow = 1, orange = 2 and red = 3 or more. A red dot above a residue indicates a poor fit to the electron density ($RSRZ > 2$). Stretches of 2 or more consecutive residues without any outlier are shown as a green connector. Residues present in the sample, but not in the model, are shown in grey.

- Molecule 1: Cytochrome P450 monooxygenase



- Molecule 1: Cytochrome P450 monooxygenase



4 Data and refinement statistics

Property	Value	Source
Space group	H 3	Depositor
Cell constants a, b, c, α , β , γ	102.80Å 102.80Å 217.52Å 90.00° 90.00° 120.00°	Depositor
Resolution (Å)	51.40 – 2.20 51.40 – 2.20	Depositor EDS
% Data completeness (in resolution range)	92.1 (51.40-2.20) 92.1 (51.40-2.20)	Depositor EDS
R_{merge}	(Not available)	Depositor
R_{sym}	0.08	Depositor
$\langle I/\sigma(I) \rangle$ ¹	3.32 (at 2.20Å)	Xtriage
Refinement program	REFMAC 5.7.0032	Depositor
R, R_{free}	0.183 , 0.248 0.174 , 0.228	Depositor DCC
R_{free} test set	2020 reflections (5.30%)	DCC
Wilson B-factor (Å ²)	31.1	Xtriage
Anisotropy	0.003	Xtriage
Bulk solvent k_{sol} (e/Å ³), B_{sol} (Å ²)	0.35 , 34.1	EDS
Estimated twinning fraction	0.034 for h,-h-k,-l	Xtriage
L-test for twinning ²	$\langle L \rangle = 0.48$, $\langle L^2 \rangle = 0.31$	Xtriage
Outliers	0 of 40105 reflections	Xtriage
F_o, F_c correlation	0.95	EDS
Total number of atoms	6734	wwPDB-VP
Average B, all atoms (Å ²)	35.0	wwPDB-VP

Xtriage's analysis on translational NCS is as follows: *The largest off-origin peak in the Patterson function is 4.74% of the height of the origin peak. No significant pseudotranslation is detected.*

¹Intensities estimated from amplitudes.

²Theoretical values of $\langle |L| \rangle$, $\langle L^2 \rangle$ for acentric reflections are 0.5, 0.375 respectively for untwinned datasets, and 0.333, 0.2 for perfectly twinned datasets.

5 Model quality

5.1 Standard geometry

Bond lengths and bond angles in the following residue types are not validated in this section: HEM, MG, FMT, K, ASD

The Z score for a bond length (or angle) is the number of standard deviations the observed value is removed from the expected value. A bond length (or angle) with $|Z| > 5$ is considered an outlier worth inspection. RMSZ is the root-mean-square of all Z scores of the bond lengths (or angles).

Mol	Chain	Bond lengths		Bond angles	
		RMSZ	# Z >5	RMSZ	# Z >5
1	A	0.50	1/3200 (0.0%)	0.71	7/4365 (0.2%)
1	B	0.47	0/3202	0.67	6/4366 (0.1%)
All	All	0.48	1/6402 (0.0%)	0.69	13/8731 (0.1%)

Chiral center outliers are detected by calculating the chiral volume of a chiral center and verifying if the center is modelled as a planar moiety or with the opposite hand. A planarity outlier is detected by checking planarity of atoms in a peptide group, atoms in a mainchain group or atoms of a sidechain that are expected to be planar.

Mol	Chain	#Chirality outliers	#Planarity outliers
1	A	0	1
1	B	0	2
All	All	0	3

All (1) bond length outliers are listed below:

Mol	Chain	Res	Type	Atoms	Z	Observed(Å)	Ideal(Å)
1	A	31	PRO	N-CD	5.12	1.55	1.47

All (13) bond angle outliers are listed below:

Mol	Chain	Res	Type	Atoms	Z	Observed(°)	Ideal(°)
1	A	25	ARG	NE-CZ-NH1	10.99	125.80	120.30
1	B	205	ARG	NE-CZ-NH2	-10.40	115.10	120.30
1	A	205	ARG	NE-CZ-NH1	-10.31	115.14	120.30
1	A	25	ARG	NE-CZ-NH2	-10.13	115.23	120.30
1	A	205	ARG	NE-CZ-NH2	9.37	124.99	120.30
1	B	205	ARG	NE-CZ-NH1	8.65	124.62	120.30
1	B	25	ARG	NE-CZ-NH1	-8.21	116.19	120.30
1	B	25	ARG	NE-CZ-NH2	8.21	124.41	120.30

Continued on next page...

Continued from previous page...

Mol	Chain	Res	Type	Atoms	Z	Observed(°)	Ideal(°)
1	A	227	THR	C-N-CD	5.71	140.40	128.40
1	A	225	GLY	N-CA-C	-5.69	98.88	113.10
1	B	227	THR	C-N-CD	5.54	140.03	128.40
1	A	296	MET	N-CA-C	5.42	125.64	111.00
1	B	296	MET	N-CA-C	5.29	125.28	111.00

There are no chirality outliers.

All (3) planarity outliers are listed below:

Mol	Chain	Res	Type	Group
1	A	295	LEU	Peptide
1	B	295	LEU	Peptide
1	B	30	GLY	Peptide

5.2 Too-close contacts [i](#)

In the following table, the Non-H and H(model) columns list the number of non-hydrogen atoms and hydrogen atoms in the chain respectively. The H(added) column lists the number of hydrogen atoms added and optimized by MolProbity. The Clashes column lists the number of clashes within the asymmetric unit, whereas Symm-Clashes lists symmetry related clashes.

Mol	Chain	Non-H	H(model)	H(added)	Clashes	Symm-Clashes
1	A	3133	0	3108	41	1
1	B	3135	0	3116	39	0
2	A	21	0	26	0	0
2	B	21	0	26	0	0
3	A	43	0	30	8	0
3	B	43	0	30	12	0
4	A	1	0	0	0	0
4	B	1	0	0	0	0
5	A	3	0	1	0	0
5	B	9	0	3	2	0
6	A	1	0	0	0	0
6	B	2	0	0	0	0
7	A	166	0	0	6	1
7	B	155	0	0	9	0
All	All	6734	0	6340	96	1

The all-atom clashscore is defined as the number of clashes found per 1000 atoms (including hydrogen atoms). The all-atom clashscore for this structure is 8.

All (96) close contacts within the same asymmetric unit are listed below, sorted by their clash

magnitude.

Atom-1	Atom-2	Interatomic distance (Å)	Clash overlap (Å)
1:A:113:ARG:HD2	1:A:113:ARG:H	1.14	1.07
1:B:113:ARG:HD2	1:B:113:ARG:H	1.39	0.87
1:A:4:CYS:HB3	1:A:5:PRO:HD2	1.56	0.85
1:A:223:THR:N	1:A:226:GLU:OE1	2.10	0.84
1:A:113:ARG:N	1:A:113:ARG:HD2	1.87	0.81
1:A:191:ARG:HD2	7:A:744:HOH:O	1.81	0.79
1:B:4:CYS:HB3	1:B:5:PRO:HD2	1.64	0.76
1:A:113:ARG:H	1:A:113:ARG:CD	1.92	0.74
3:B:501:HEM:HBB2	3:B:501:HEM:HHC	1.70	0.74
1:A:34:ARG:CG	1:A:34:ARG:NE	2.51	0.73
1:A:88:ASP:HB2	7:A:685:HOH:O	1.92	0.69
1:B:113:ARG:N	1:B:113:ARG:HD2	2.06	0.69
3:A:502:HEM:HBB2	3:A:502:HEM:HHC	1.74	0.69
3:B:501:HEM:CBA	3:B:501:HEM:HMA1	2.23	0.68
1:A:278:GLU:OE1	7:A:757:HOH:O	2.11	0.68
1:B:101:ARG:NH1	7:B:740:HOH:O	2.21	0.68
3:B:501:HEM:HMA1	3:B:501:HEM:HBA1	1.77	0.67
1:B:34:ARG:CB	7:B:686:HOH:O	2.44	0.65
1:B:52:ARG:NH1	7:B:684:HOH:O	2.32	0.63
1:A:159:SER:CB	1:A:169:GLN:OE1	2.50	0.60
1:A:110:LEU:HD21	1:A:161:LEU:HD21	1.83	0.60
1:A:223:THR:CA	1:A:226:GLU:OE1	2.50	0.60
1:B:166:SER:HA	1:B:169:GLN:HE21	1.67	0.60
1:A:363:ALA:HB1	3:A:502:HEM:CBB	2.32	0.60
1:B:110:LEU:HD21	1:B:161:LEU:HD21	1.85	0.59
1:A:268:ARG:NH1	1:A:272:ASP:OD2	2.33	0.58
1:B:112:ARG:NH2	1:B:116:ASP:OD2	2.37	0.58
1:B:246:HIS:CE1	7:B:733:HOH:O	2.56	0.58
5:B:508:FMT:C	7:B:622:HOH:O	2.52	0.57
1:B:85:ILE:HG21	1:B:296:MET:H	1.70	0.57
1:A:85:ILE:HG21	1:A:296:MET:H	1.70	0.57
3:A:502:HEM:HBA1	3:A:502:HEM:HMA1	1.86	0.56
1:A:226:GLU:O	1:A:227:THR:HG22	2.06	0.56
1:A:410:ARG:HD2	7:A:759:HOH:O	2.05	0.55
1:B:268:ARG:NH1	1:B:272:ASP:OD2	2.38	0.55
1:B:15:MET:HA	1:B:15:MET:HE2	1.88	0.54
1:A:119:LYS:HB3	1:A:120:PRO:HD3	1.90	0.54
1:A:38:LEU:HD11	1:A:182:ILE:HD11	1.88	0.54
3:A:502:HEM:HBA1	3:A:502:HEM:CMA	2.39	0.53
1:B:38:LEU:HD11	1:B:182:ILE:HD11	1.91	0.52
1:A:15:MET:HE2	1:A:15:MET:HA	1.91	0.52

Continued on next page...

Continued from previous page...

Atom-1	Atom-2	Interatomic distance (Å)	Clash overlap (Å)
1:A:4:CYS:HB3	1:A:5:PRO:CD	2.33	0.52
1:B:119:LYS:HB3	1:B:120:PRO:HD3	1.91	0.52
1:A:151:TYR:HB3	1:A:152:PRO:HD3	1.92	0.51
1:B:358:PRO:HD2	3:B:501:HEM:C1D	2.46	0.50
1:B:151:TYR:HB3	1:B:152:PRO:HD3	1.94	0.49
3:B:501:HEM:CBA	3:B:501:HEM:CMA	2.87	0.48
1:A:67:TRP:CG	1:A:298:PHE:CE1	3.02	0.48
1:B:31:PRO:HD2	7:B:644:HOH:O	2.13	0.48
1:B:113:ARG:CD	1:B:113:ARG:H	2.11	0.48
1:A:15:MET:CE	1:A:182:ILE:HG21	2.44	0.48
1:A:142:VAL:HG12	7:A:676:HOH:O	2.14	0.48
5:B:508:FMT:H	7:B:622:HOH:O	2.14	0.47
1:B:363:ALA:HB1	3:B:501:HEM:CBB	2.45	0.47
1:A:4:CYS:CB	1:A:5:PRO:HD2	2.36	0.46
1:A:186:GLN:OE1	1:A:186:GLN:HA	2.15	0.46
3:A:502:HEM:HMC2	3:A:502:HEM:HBC2	1.96	0.46
3:B:501:HEM:HBC2	3:B:501:HEM:HMC2	1.97	0.46
1:B:193:ILE:HA	1:B:196:MET:HE2	1.96	0.46
1:B:113:ARG:H	1:B:113:ARG:HH21	1.64	0.46
1:A:362:LEU:HD23	3:A:502:HEM:HBC2	1.97	0.45
1:B:182:ILE:HG22	1:B:394:PRO:HB2	1.97	0.45
1:A:85:ILE:CG2	1:A:296:MET:H	2.29	0.45
1:A:182:ILE:HG22	1:A:394:PRO:HB2	1.97	0.45
1:B:123:GLU:HG3	7:B:696:HOH:O	2.16	0.45
1:A:153:LEU:HB3	1:A:154:PRO:HD3	1.97	0.45
3:B:501:HEM:CMA	3:B:501:HEM:HBA2	2.47	0.45
3:B:501:HEM:HBB2	3:B:501:HEM:CHC	2.41	0.45
1:B:296:MET:HB3	1:B:298:PHE:CZ	2.53	0.44
1:A:18:ASP:OD2	1:A:21:GLY:HA3	2.17	0.44
1:B:294:LEU:HG	3:B:501:HEM:HBA1	2.00	0.43
3:B:501:HEM:HBC2	3:B:501:HEM:CMC	2.49	0.43
3:B:501:HEM:HMA1	3:B:501:HEM:HBA2	2.00	0.43
1:A:283:GLU:HA	1:A:283:GLU:OE1	2.18	0.43
3:A:502:HEM:CMC	3:A:502:HEM:HBC2	2.49	0.42
1:B:4:CYS:CB	1:B:5:PRO:HD2	2.42	0.42
1:B:85:ILE:CG2	1:B:296:MET:H	2.31	0.42
1:A:239:GLN:NE2	7:A:739:HOH:O	2.51	0.42
1:B:77:ARG:O	1:B:186:GLN:OE1	2.38	0.42
1:A:358:PRO:HD2	3:A:502:HEM:C1D	2.54	0.42
1:A:159:SER:HB3	1:A:169:GLN:OE1	2.20	0.42
1:A:108:GLN:O	1:A:114:ARG:HG3	2.20	0.42

Continued on next page...

Continued from previous page...

Atom-1	Atom-2	Interatomic distance (Å)	Clash overlap (Å)
1:A:310:ILE:HA	1:A:311:PRO:HD3	1.89	0.42
1:B:246:HIS:ND1	7:B:733:HOH:O	2.36	0.42
1:B:67:TRP:CG	1:B:298:PHE:CE1	3.08	0.42
1:B:294:LEU:C	1:B:294:LEU:HD13	2.40	0.42
1:A:35:ILE:HD13	1:A:44:ALA:HB2	2.02	0.42
1:A:34:ARG:HH12	1:A:314:GLU:CD	2.23	0.41
1:A:30:GLY:HA3	1:A:31:PRO:HA	1.89	0.41
1:B:4:CYS:HB3	1:B:5:PRO:CD	2.42	0.41
1:B:267:LEU:O	1:B:271:ARG:HG2	2.19	0.41
1:B:80:PRO:HA	1:B:186:GLN:NE2	2.36	0.41
1:B:126:VAL:O	1:B:130:LEU:HG	2.21	0.41
1:B:283:GLU:OE1	1:B:283:GLU:HA	2.21	0.40
1:B:186:GLN:NE2	1:B:189:ARG:HE	2.19	0.40
1:B:35:ILE:HD13	1:B:44:ALA:HB2	2.03	0.40

All (1) symmetry-related close contacts are listed below. The label for Atom-2 includes the symmetry operator and encoded unit-cell translations to be applied.

Atom-1	Atom-2	Interatomic distance (Å)	Clash overlap (Å)
1:A:132:ASP:OD1	7:A:602:HOH:O[3_655]	2.19	0.01

5.3 Torsion angles [i](#)

5.3.1 Protein backbone [i](#)

In the following table, the Percentiles column shows the percent Ramachandran outliers of the chain as a percentile score with respect to all X-ray entries followed by that with respect to entries of similar resolution.

The Analysed column shows the number of residues for which the backbone conformation was analysed, and the total number of residues.

Mol	Chain	Analysed	Favoured	Allowed	Outliers	Percentiles	
1	A	405/410 (99%)	391 (96%)	11 (3%)	3 (1%)	26	25
1	B	405/410 (99%)	388 (96%)	15 (4%)	2 (0%)	34	35
All	All	810/820 (99%)	779 (96%)	26 (3%)	5 (1%)	30	29

All (5) Ramachandran outliers are listed below:

Mol	Chain	Res	Type
1	A	223	THR
1	A	226	GLU
1	B	223	THR
1	A	227	THR
1	B	227	THR

5.3.2 Protein sidechains ⓘ

In the following table, the Percentiles column shows the percent sidechain outliers of the chain as a percentile score with respect to all X-ray entries followed by that with respect to entries of similar resolution.

The Analysed column shows the number of residues for which the sidechain conformation was analysed, and the total number of residues.

Mol	Chain	Analysed	Rotameric	Outliers	Percentiles	
1	A	327/341 (96%)	321 (98%)	6 (2%)	66	79
1	B	327/341 (96%)	323 (99%)	4 (1%)	78	88
All	All	654/682 (96%)	644 (98%)	10 (2%)	72	84

All (10) residues with a non-rotameric sidechain are listed below:

Mol	Chain	Res	Type
1	A	17	THR
1	A	31	PRO
1	A	113	ARG
1	A	226	GLU
1	A	381	LEU
1	A	404	PHE
1	B	112	ARG
1	B	113	ARG
1	B	381	LEU
1	B	404	PHE

Some sidechains can be flipped to improve hydrogen bonding and reduce clashes. All (8) such sidechains are listed below:

Mol	Chain	Res	Type
1	A	53	GLN
1	A	108	GLN
1	A	392	ASN
1	A	398	GLN

Continued on next page...

Continued from previous page...

Mol	Chain	Res	Type
1	B	48	HIS
1	B	53	GLN
1	B	186	GLN
1	B	392	ASN

5.3.3 RNA [i](#)

There are no RNA molecules in this entry.

5.4 Non-standard residues in protein, DNA, RNA chains [i](#)

There are no non-standard protein/DNA/RNA residues in this entry.

5.5 Carbohydrates [i](#)

There are no carbohydrates in this entry.

5.6 Ligand geometry [i](#)

Of 13 ligands modelled in this entry, 5 are monoatomic - leaving 8 for Mogul analysis.

In the following table, the Counts columns list the number of bonds (or angles) for which Mogul statistics could be retrieved, the number of bonds (or angles) that are observed in the model and the number of bonds (or angles) that are defined in the chemical component dictionary. The Link column lists molecule types, if any, to which the group is linked. The Z score for a bond length (or angle) is the number of standard deviations the observed value is removed from the expected value. A bond length (or angle) with $|Z| > 2$ is considered an outlier worth inspection. RMSZ is the root-mean-square of all Z scores of the bond lengths (or angles).

Mol	Type	Chain	Res	Link	Bond lengths			Bond angles		
					Counts	RMSZ	$\# Z > 2$	Counts	RMSZ	$\# Z > 2$
2	ASD	A	501	-	24,24,24	0.92	0	39,39,39	1.41	7 (17%)
3	HEM	A	502	1	30,50,50	2.18	7 (23%)	24,82,82	2.51	10 (41%)
5	FMT	A	504	-	0,2,2	0.00	-	0,1,1	0.00	-
3	HEM	B	501	1	30,50,50	2.31	8 (26%)	24,82,82	2.51	12 (50%)
2	ASD	B	502	-	24,24,24	0.78	0	39,39,39	1.54	7 (17%)
5	FMT	B	506	-	0,2,2	0.00	-	0,1,1	0.00	-
5	FMT	B	507	-	0,2,2	0.00	-	0,1,1	0.00	-
5	FMT	B	508	-	0,2,2	0.00	-	0,1,1	0.00	-

In the following table, the Chirals column lists the number of chiral outliers, the number of chiral centers analysed, the number of these observed in the model and the number defined in the chemical component dictionary. Similar counts are reported in the Torsion and Rings columns. '-' means no outliers of that kind were identified.

Mol	Type	Chain	Res	Link	Chirals	Torsions	Rings
2	ASD	A	501	-	-	0/0/58/58	0/4/4/4
3	HEM	A	502	1	-	0/10/54/54	0/0/8/8
5	FMT	A	504	-	-	0/0/0/0	0/0/0/0
3	HEM	B	501	1	-	2/10/54/54	0/0/8/8
2	ASD	B	502	-	-	0/0/58/58	0/4/4/4
5	FMT	B	506	-	-	0/0/0/0	0/0/0/0
5	FMT	B	507	-	-	0/0/0/0	0/0/0/0
5	FMT	B	508	-	-	0/0/0/0	0/0/0/0

All (15) bond length outliers are listed below:

Mol	Chain	Res	Type	Atoms	Z	Observed(Å)	Ideal(Å)
3	B	501	HEM	C2D-C3D	-6.55	1.34	1.54
3	B	501	HEM	C2C-C1C	-6.26	1.40	1.52
3	A	502	HEM	C2D-C3D	-6.26	1.35	1.54
3	A	502	HEM	C2C-C1C	-5.63	1.41	1.52
3	B	501	HEM	C3D-C4D	-4.20	1.46	1.51
3	A	502	HEM	C3D-C4D	-4.20	1.46	1.51
3	B	501	HEM	C3B-C4B	-3.53	1.48	1.51
3	A	502	HEM	C2B-C1B	-3.21	1.41	1.51
3	B	501	HEM	C2B-C1B	-3.14	1.41	1.51
3	A	502	HEM	C3B-C4B	-2.62	1.49	1.51
3	B	501	HEM	C3C-CAC	-2.13	1.47	1.51
3	B	501	HEM	C1A-CHA	-2.07	1.34	1.39
3	A	502	HEM	FE-NB	2.14	2.08	1.97
3	A	502	HEM	FE-NC	2.63	2.06	1.95
3	B	501	HEM	FE-NC	2.99	2.07	1.95

All (36) bond angle outliers are listed below:

Mol	Chain	Res	Type	Atoms	Z	Observed(°)	Ideal(°)
2	B	502	ASD	O2-C17-C16	-3.46	121.29	125.71
3	B	501	HEM	CAA-C2A-C1A	-3.38	123.34	127.01
3	A	502	HEM	CAA-C2A-C1A	-3.14	123.60	127.01
3	B	501	HEM	C3B-C4B-NB	-3.05	105.80	111.63
3	B	501	HEM	C1D-CHD-C4C	-2.94	120.91	125.82
3	A	502	HEM	C3B-C4B-NB	-2.86	106.15	111.63
2	A	501	ASD	C6-C5-C4	-2.84	117.28	120.89

Continued on next page...

Continued from previous page...

Mol	Chain	Res	Type	Atoms	Z	Observed(°)	Ideal(°)
3	A	502	HEM	CAA-CBA-CGA	-2.68	107.83	112.75
2	B	502	ASD	C6-C5-C4	-2.65	117.53	120.89
2	A	501	ASD	C5-C4-C3	-2.40	120.44	123.75
2	A	501	ASD	C7-C8-C9	-2.30	107.71	110.46
3	A	502	HEM	C1D-CHD-C4C	-2.29	121.99	125.82
2	A	501	ASD	C13-C14-C8	-2.20	110.75	113.12
3	B	501	HEM	C2C-C1C-CHC	2.07	126.83	123.68
3	B	501	HEM	CHD-C1D-ND	2.09	129.55	124.52
3	B	501	HEM	CHC-C4B-NB	2.09	129.55	124.52
2	A	501	ASD	C6-C5-C10	2.14	119.14	116.71
3	A	502	HEM	C2D-C3D-C4D	2.25	105.31	101.50
2	B	502	ASD	C2-C3-C4	2.27	120.19	116.70
2	B	502	ASD	C12-C13-C17	2.27	120.46	116.60
3	B	501	HEM	C2D-C3D-C4D	2.40	105.56	101.50
2	A	501	ASD	C2-C3-C4	2.41	120.41	116.70
2	B	502	ASD	C15-C14-C13	2.48	106.47	104.06
2	A	501	ASD	C16-C17-C13	2.77	111.39	108.64
2	B	502	ASD	C6-C5-C10	2.86	119.95	116.71
3	B	501	HEM	CMD-C2D-C3D	3.19	128.44	114.35
3	A	502	HEM	CMD-C2D-C3D	3.31	128.97	114.35
2	B	502	ASD	C16-C17-C13	3.51	112.12	108.64
3	B	501	HEM	CMB-C2B-C3B	3.54	125.38	116.53
3	A	502	HEM	CAD-C3D-C4D	3.64	125.32	112.47
3	A	502	HEM	CMB-C2B-C3B	3.66	125.68	116.53
3	B	501	HEM	CAD-C3D-C4D	3.77	125.78	112.47
3	B	501	HEM	CMC-C2C-C3C	4.85	128.65	116.53
3	A	502	HEM	CMC-C2C-C3C	5.11	129.28	116.53
3	B	501	HEM	CAD-C3D-C2D	5.37	128.65	113.22
3	A	502	HEM	CAD-C3D-C2D	5.59	129.29	113.22

There are no chirality outliers.

All (2) torsion outliers are listed below:

Mol	Chain	Res	Type	Atoms
3	B	501	HEM	C3A-C2A-CAA-CBA
3	B	501	HEM	C1A-C2A-CAA-CBA

There are no ring outliers.

3 monomers are involved in 22 short contacts:

Mol	Chain	Res	Type	Clashes	Symm-Clashes
3	A	502	HEM	8	0
3	B	501	HEM	12	0
5	B	508	FMT	2	0

5.7 Other polymers [i](#)

There are no such residues in this entry.

5.8 Polymer linkage issues [i](#)

There are no chain breaks in this entry.

6 Fit of model and data [i](#)

6.1 Protein, DNA and RNA chains [i](#)

In the following table, the column labelled ‘#RSRZ> 2’ contains the number (and percentage) of RSRZ outliers, followed by percent RSRZ outliers for the chain as percentile scores relative to all X-ray entries and entries of similar resolution. The OWAB column contains the minimum, median, 95th percentile and maximum values of the occupancy-weighted average B-factor per residue. The column labelled ‘Q< 0.9’ lists the number of (and percentage) of residues with an average occupancy less than 0.9.

Mol	Chain	Analysed	<RSRZ>	#RSRZ>2	OWAB(Å ²)	Q<0.9
1	A	407/410 (99%)	-0.40	2 (0%) 91 91	22, 34, 53, 99	1 (0%)
1	B	407/410 (99%)	-0.37	2 (0%) 91 91	23, 34, 53, 91	2 (0%)
All	All	814/820 (99%)	-0.38	4 (0%) 91 91	22, 34, 53, 99	3 (0%)

All (4) RSRZ outliers are listed below:

Mol	Chain	Res	Type	RSRZ
1	B	223	THR	3.3
1	A	225	GLY	3.0
1	B	30	GLY	2.1
1	A	4	CYS	2.1

6.2 Non-standard residues in protein, DNA, RNA chains [i](#)

There are no non-standard protein/DNA/RNA residues in this entry.

6.3 Carbohydrates [i](#)

There are no carbohydrates in this entry.

6.4 Ligands [i](#)

In the following table, the Atoms column lists the number of modelled atoms in the group and the number defined in the chemical component dictionary. LLDF column lists the quality of electron density of the group with respect to its neighbouring residues in protein, DNA or RNA chains. The B-factors column lists the minimum, median, 95th percentile and maximum values of B factors of atoms in the group. The column labelled ‘Q< 0.9’ lists the number of atoms with occupancy less than 0.9.

Mol	Type	Chain	Res	Atoms	RSCC	RSR	LLDF	B-factors(\AA^2)	Q<0.9
5	FMT	B	508	3/3	0.97	0.12	1.35	25,25,31,35	0
5	FMT	B	507	3/3	0.90	0.12	-0.24	36,36,42,50	0
2	ASD	A	501	21/21	0.93	0.10	-0.49	17,22,27,32	0
3	HEM	A	502	43/43	0.97	0.10	-0.66	18,22,26,30	0
2	ASD	B	502	21/21	0.93	0.09	-0.80	17,22,25,25	0
3	HEM	B	501	43/43	0.97	0.09	-1.00	19,23,25,28	0
5	FMT	A	504	3/3	0.93	0.09	-1.45	26,26,31,37	0
6	K	B	504	1/1	0.90	0.04	-	56,56,56,56	0
5	FMT	B	506	3/3	0.86	0.22	-	38,38,42,47	0
6	K	A	505	1/1	0.96	0.03	-	52,52,52,52	0
6	K	B	505	1/1	0.94	0.10	-	42,42,42,42	0
4	MG	A	503	1/1	0.98	0.17	-	13,13,13,13	0
4	MG	B	503	1/1	0.99	0.19	-	11,11,11,11	0

6.5 Other polymers [i](#)

There are no such residues in this entry.