



Full wwPDB X-ray Structure Validation Report ⓘ

Oct 4, 2016 – 05:00 AM EDT

PDB ID : 5JCU
Title : Crystal Structure of hGSTA1-1 with Glutathione Adduct of Phenethyl Isothiocyanate and Cystein Adduct of Phenethyl Isothiocyanate
Authors : Kumari, V.; Ji, X.
Deposited on : 2016-04-15
Resolution : 1.93 Å(reported)

This is a Full wwPDB X-ray Structure Validation Report for a publicly released PDB entry.

We welcome your comments at validation@mail.wwpdb.org

A user guide is available at

<http://wwpdb.org/validation/2016/XrayValidationReportHelp>

with specific help available everywhere you see the ⓘ symbol.

The following versions of software and data (see [references ⓘ](#)) were used in the production of this report:

MolProbity : 4.02b-467
Mogul : 1.7.1 (RC1), CSD as537be (2016)
Xtriage (Phenix) : 1.9-1692
EDS : rb-20027939
Percentile statistics : 20151230.v01 (using entries in the PDB archive December 30th 2015)
Refmac : 5.8.0135
CCP4 : 6.5.0
Ideal geometry (proteins) : Engh & Huber (2001)
Ideal geometry (DNA, RNA) : Parkinson et al. (1996)
Validation Pipeline (wwPDB-VP) : rb-20027939

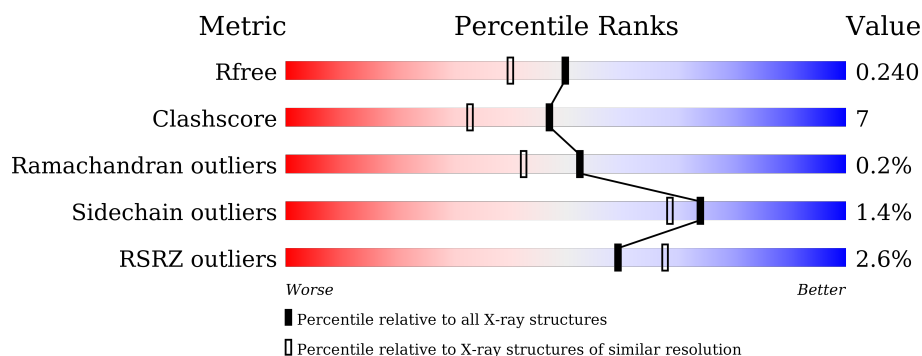
1 Overall quality at a glance

The following experimental techniques were used to determine the structure:

X-RAY DIFFRACTION

The reported resolution of this entry is 1.93 Å.

Percentile scores (ranging between 0-100) for global validation metrics of the entry are shown in the following graphic. The table shows the number of entries on which the scores are based.



Metric	Whole archive (#Entries)	Similar resolution (#Entries, resolution range(Å))
R_{free}	91344	2910 (1.96-1.92)
Clashscore	102246	3095 (1.96-1.92)
Ramachandran outliers	100387	3062 (1.96-1.92)
Sidechain outliers	100360	3062 (1.96-1.92)
RSRZ outliers	91569	2915 (1.96-1.92)

The table below summarises the geometric issues observed across the polymeric chains and their fit to the electron density. The red, orange, yellow and green segments on the lower bar indicate the fraction of residues that contain outliers for ≥ 3 , 2, 1 and 0 types of geometric quality criteria. A grey segment represents the fraction of residues that are not modelled. The numeric value for each fraction is indicated below the corresponding segment, with a dot representing fractions $\leq 5\%$. The upper red bar (where present) indicates the fraction of residues that have poor fit to the electron density. The numeric value is given above the bar.

Mol	Chain	Length	Quality of chain
1	A	221	<div> <div>3%</div> <div> <div></div> <div>86%</div> <div>14%</div> </div> </div>
1	B	221	<div> <div>%</div> <div> <div></div> <div>87%</div> <div>12%</div> </div> </div>
1	C	221	<div> <div>4%</div> <div> <div></div> <div>79%</div> <div>18%</div> <div>.</div> </div> </div>
1	D	221	<div> <div>3%</div> <div> <div></div> <div>87%</div> <div>12%</div> <div>.</div> </div> </div>

The following table lists non-polymeric compounds, carbohydrate monomers and non-standard residues in protein, DNA, RNA chains that are outliers for geometric or electron-density-fit crite-

ria:

Mol	Type	Chain	Res	Chirality	Geometry	Clashes	Electron density
3	EDO	A	302	-	-	-	X
3	EDO	A	303	-	-	-	X
3	EDO	C	301	-	-	-	X
3	EDO	C	302	-	-	X	X
3	EDO	D	302	-	-	-	X

2 Entry composition [i](#)

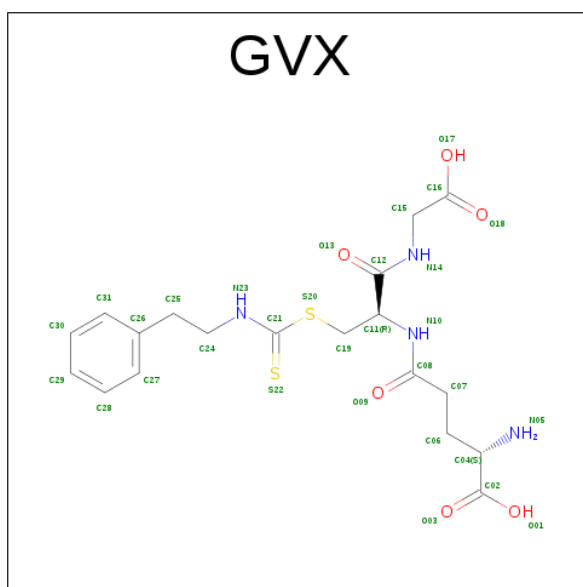
There are 4 unique types of molecules in this entry. The entry contains 8549 atoms, of which 12 are hydrogens and 0 are deuteriums.

In the tables below, the ZeroOcc column contains the number of atoms modelled with zero occupancy, the AltConf column contains the number of residues with at least one atom in alternate conformation and the Trace column contains the number of residues modelled with at most 2 atoms.

- Molecule 1 is a protein called Glutathione S-transferase A1.

Mol	Chain	Residues	Atoms					ZeroOcc	AltConf	Trace
1	A	221	Total	C	N	O	S	0	3	0
			1820	1183	304	324	9			
1	B	221	Total	C	N	O	S	0	2	0
			1818	1179	305	325	9			
1	C	221	Total	C	N	O	S	0	3	0
			1820	1183	304	324	9			
1	D	221	Total	C	N	O	S	0	5	0
			1831	1192	304	326	9			

- Molecule 2 is L-gamma-glutamyl-S-[(2-phenylethyl)carbamothioyl]-L-cysteinylglycine (three-letter code: GVX) (formula: $C_{19}H_{26}N_4O_6S_2$).



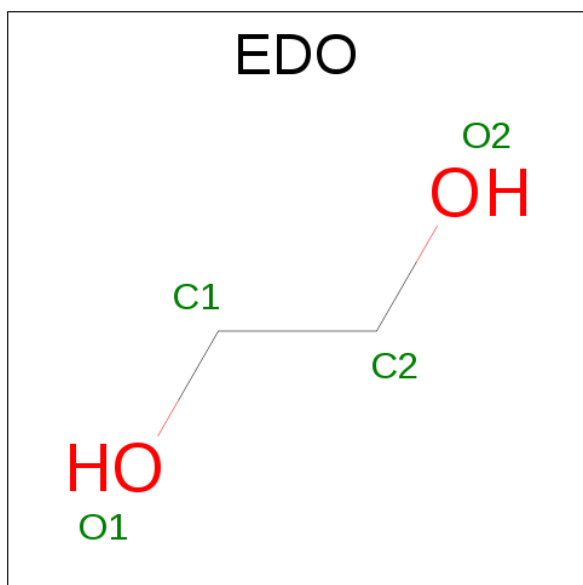
Mol	Chain	Residues	Atoms					ZeroOcc	AltConf
2	A	1	Total	C	N	O	S	0	0
			31	19	4	6	2		
2	B	1	Total	C	N	O	S	0	0
			31	19	4	6	2		

Continued on next page...

Continued from previous page...

Mol	Chain	Residues	Atoms					ZeroOcc	AltConf
2	C	1	Total	C	N	O	S	0	0
			31	19	4	6	2		
2	D	1	Total	C	N	O	S	0	0
			31	19	4	6	2		

- Molecule 3 is 1,2-ETHANEDIOL (three-letter code: EDO) (formula: C₂H₆O₂).



Mol	Chain	Residues	Atoms				ZeroOcc	AltConf
3	A	1	Total	C	O		0	0
			4	2	2			
3	A	1	Total	C	O		0	0
			4	2	2			
3	A	1	Total	C	O		0	0
			4	2	2			
3	C	1	Total	C	H	O	0	0
			10	2	6	2		
3	C	1	Total	C	O		0	0
			4	2	2			
3	D	1	Total	C	H	O	0	0
			10	2	6	2		

- Molecule 4 is water.

Mol	Chain	Residues	Atoms		ZeroOcc	AltConf
4	A	263	Total	O	0	5
			266	266		

Continued on next page...

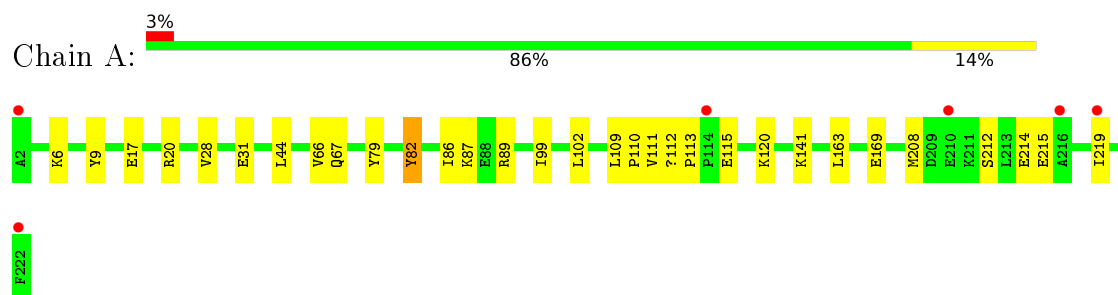
Continued from previous page...

Mol	Chain	Residues	Atoms		ZeroOcc	AltConf
4	B	281	Total 284	O 284	0	8
4	C	266	Total 271	O 271	0	6
4	D	278	Total 279	O 279	0	3

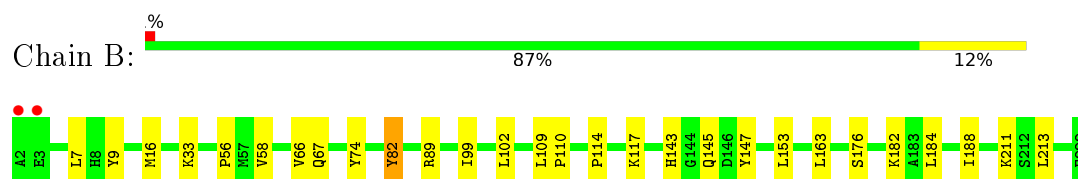
3 Residue-property plots [i](#)

These plots are drawn for all protein, RNA and DNA chains in the entry. The first graphic for a chain summarises the proportions of errors displayed in the second graphic. The second graphic shows the sequence view annotated by issues in geometry and electron density. Residues are color-coded according to the number of geometric quality criteria for which they contain at least one outlier: green = 0, yellow = 1, orange = 2 and red = 3 or more. A red dot above a residue indicates a poor fit to the electron density ($RSRZ > 2$). Stretches of 2 or more consecutive residues without any outlier are shown as a green connector. Residues present in the sample, but not in the model, are shown in grey.

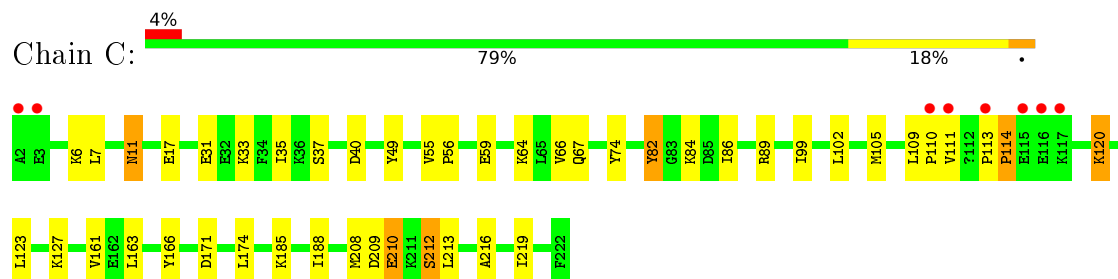
• Molecule 1: Glutathione S-transferase A1



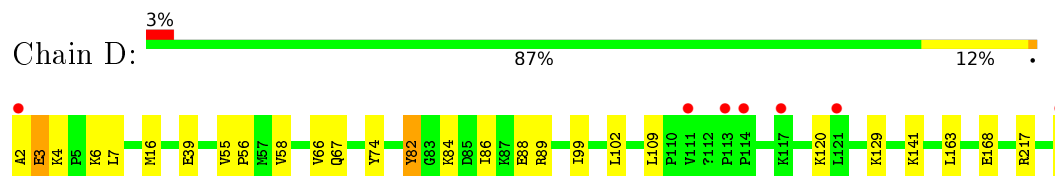
• Molecule 1: Glutathione S-transferase A1



• Molecule 1: Glutathione S-transferase A1



• Molecule 1: Glutathione S-transferase A1



4 Data and refinement statistics

Property	Value	Source
Space group	C 1 2 1	Depositor
Cell constants a, b, c, α , β , γ	100.33Å 92.67Å 104.05Å 90.00° 92.18° 90.00°	Depositor
Resolution (Å)	29.80 – 1.93 29.80 – 1.93	Depositor EDS
% Data completeness (in resolution range)	98.9 (29.80-1.93) 98.9 (29.80-1.93)	Depositor EDS
R_{merge}	0.08	Depositor
R_{sym}	(Not available)	Depositor
$\langle I/\sigma(I) \rangle$ ¹	1.68 (at 1.92Å)	Xtriage
Refinement program	PHENIX (phenix.refine: 1.9_1692)	Depositor
R, R_{free}	0.177 , 0.240 0.177 , 0.240	Depositor DCC
R_{free} test set	992 reflections (1.40%)	DCC
Wilson B-factor (Å ²)	26.6	Xtriage
Anisotropy	0.211	Xtriage
Bulk solvent k_{sol} (e/Å ³), B_{sol} (Å ²)	0.30 , 54.1	EDS
L-test for twinning ²	$\langle L \rangle = 0.48$, $\langle L^2 \rangle = 0.31$	Xtriage
Estimated twinning fraction	0.019 for -h,-k,l	Xtriage
F_o, F_c correlation	0.96	EDS
Total number of atoms	8549	wwPDB-VP
Average B, all atoms (Å ²)	33.0	wwPDB-VP

Xtriage's analysis on translational NCS is as follows: *The analyses of the Patterson function reveals a significant off-origin peak that is 45.90 % of the origin peak, indicating pseudo translational symmetry. The chance of finding a peak of this or larger height randomly in a structure without pseudo translational symmetry is equal to 1.2374e-04. The detected translational NCS is most likely also responsible for the elevated intensity ratio.*

¹ Intensities estimated from amplitudes.

² Theoretical values of $\langle |L| \rangle$, $\langle L^2 \rangle$ for acentric reflections are 0.5, 0.333 respectively for untwinned datasets, and 0.375, 0.2 for perfectly twinned datasets.

5 Model quality [i](#)

5.1 Standard geometry [i](#)

Bond lengths and bond angles in the following residue types are not validated in this section: 6M6, GVX, EDO

The Z score for a bond length (or angle) is the number of standard deviations the observed value is removed from the expected value. A bond length (or angle) with $|Z| > 5$ is considered an outlier worth inspection. RMSZ is the root-mean-square of all Z scores of the bond lengths (or angles).

Mol	Chain	Bond lengths		Bond angles	
		RMSZ	$\# Z > 5$	RMSZ	$\# Z > 5$
1	A	0.43	0/1844	0.53	0/2474
1	B	0.41	0/1836	0.52	0/2463
1	C	0.44	0/1844	0.53	0/2474
1	D	0.44	0/1861	0.54	0/2497
All	All	0.43	0/7385	0.53	0/9908

There are no bond length outliers.

There are no bond angle outliers.

There are no chirality outliers.

There are no planarity outliers.

5.2 Too-close contacts [i](#)

In the following table, the Non-H and H(model) columns list the number of non-hydrogen atoms and hydrogen atoms in the chain respectively. The H(added) column lists the number of hydrogen atoms added and optimized by MolProbity. The Clashes column lists the number of clashes within the asymmetric unit, whereas Symm-Clashes lists symmetry related clashes.

Mol	Chain	Non-H	H(model)	H(added)	Clashes	Symm-Clashes
1	A	1820	0	1878	24	0
1	B	1818	0	1866	22	0
1	C	1820	0	1880	44	0
1	D	1831	0	1897	26	0
2	A	31	0	0	2	0
2	B	31	0	0	1	0
2	C	31	0	0	1	0
2	D	31	0	0	0	0
3	A	12	0	18	2	0

Continued on next page...

Continued from previous page...

Mol	Chain	Non-H	H(model)	H(added)	Clashes	Symm-Clashes
3	C	8	6	12	4	0
3	D	4	6	6	0	0
4	A	266	0	0	4	0
4	B	284	0	0	3	0
4	C	271	0	0	8	0
4	D	279	0	0	7	0
All	All	8537	12	7557	112	0

The all-atom clashscore is defined as the number of clashes found per 1000 atoms (including hydrogen atoms). The all-atom clashscore for this structure is 7.

All (112) close contacts within the same asymmetric unit are listed below, sorted by their clash magnitude.

Atom-1	Atom-2	Interatomic distance (Å)	Clash overlap (Å)
1:C:86[A]:ILE:HG22	1:C:89[A]:ARG:NH2	1.73	1.03
1:A:86[B]:ILE:HG22	1:A:89[B]:ARG:NH2	1.95	0.81
1:C:31:GLU:OE2	1:C:33:LYS:HE3	1.80	0.80
1:C:86[A]:ILE:HG22	1:C:89[A]:ARG:HH22	1.48	0.77
1:A:109:LEU:HB3	1:A:110:PRO:HD3	1.67	0.76
1:D:3[A]:GLU:HA	1:D:3[A]:GLU:OE1	1.93	0.68
1:D:2:ALA:C	1:D:3[B]:GLU:HG3	2.14	0.67
1:C:185:LYS:CE	3:C:302:EDO:H11	2.26	0.66
1:C:102:LEU:HD23	1:C:163:LEU:HD21	1.77	0.66
1:B:7:LEU:HD22	1:B:58:VAL:HG22	1.77	0.65
1:C:82:TYR:O	1:C:89[A]:ARG:HG2	1.97	0.65
1:C:84:LYS:HD3	4:C:428:HOH:O	1.97	0.64
1:A:102:LEU:HD23	1:A:163:LEU:HD21	1.81	0.62
1:C:86[B]:ILE:HG12	1:D:74:TYR:CD1	2.36	0.61
1:D:99:ILE:HG23	1:D:163:LEU:HD22	1.81	0.61
1:D:217:ARG:HG2	1:D:222:PHE:CE1	2.36	0.61
1:C:11:ASN:ND2	4:C:401:HOH:O	2.34	0.61
1:B:82:TYR:O	1:B:89[A]:ARG:HG2	2.01	0.60
1:C:185:LYS:HE2	3:C:302:EDO:H11	1.84	0.60
1:C:109:LEU:N	1:C:110:PRO:HD2	2.16	0.60
1:A:28:VAL:HG21	1:A:79:TYR:CZ	2.37	0.59
1:D:129:LYS:NZ	4:D:403:HOH:O	2.36	0.59
1:D:2:ALA:O	1:D:4:LYS:N	2.36	0.59
1:A:86[B]:ILE:HG22	1:A:89[B]:ARG:HH22	1.68	0.58
1:B:109:LEU:HB3	1:B:110:PRO:HD3	1.85	0.58
3:A:304:EDO:H11	4:A:580:HOH:O	2.02	0.58
4:A:452:HOH:O	1:B:89[B]:ARG:HD3	2.02	0.58

Continued on next page...

Continued from previous page...

Atom-1	Atom-2	Interatomic distance (Å)	Clash overlap (Å)
1:C:185:LYS:CD	3:C:302:EDO:H11	2.34	0.57
1:D:168:GLU:HG3	4:D:436[B]:HOH:O	2.04	0.56
1:B:82:TYR:CE1	1:B:89[B]:ARG:HG3	2.40	0.56
1:D:6:LYS:HG3	4:D:481:HOH:O	2.06	0.56
1:C:127:LYS:HE2	4:C:595:HOH:O	2.06	0.55
1:C:37:SER:HA	1:C:219:ILE:HG12	1.87	0.55
1:A:214:GLU:HA	1:A:214:GLU:OE1	2.05	0.55
1:C:66:VAL:O	1:C:67:GLN:HB2	2.07	0.54
1:A:82:TYR:O	1:A:89[B]:ARG:HG2	2.08	0.54
1:C:120:LYS:HE2	1:C:120:LYS:HA	1.88	0.54
1:C:208:MET:HG3	1:C:212:SER:OG	2.09	0.53
1:A:66:VAL:O	1:A:67:GLN:HB2	2.08	0.53
1:D:82:TYR:O	1:D:89[B]:ARG:HG2	2.09	0.53
1:C:37:SER:CA	1:C:219:ILE:HG12	2.39	0.53
1:A:208:MET:HG3	1:A:212:SER:HB3	1.91	0.52
1:A:111:VAL:HG13	2:A:301:GVX:C29	2.40	0.52
1:B:99:ILE:HG23	1:B:163:LEU:HD22	1.91	0.52
1:C:35:ILE:HG23	1:C:40:ASP:HB2	1.92	0.52
3:C:302:EDO:H12	4:C:496:HOH:O	2.09	0.52
1:D:82:TYR:CE1	1:D:89[A]:ARG:HG3	2.45	0.52
1:D:102:LEU:HD23	1:D:163:LEU:HD21	1.91	0.52
1:B:143:HIS:O	1:B:145:GLN:HG3	2.10	0.52
1:A:169:GLU:HB2	3:A:302:EDO:H12	1.93	0.51
1:C:49:TYR:CZ	1:C:64:LYS:HE2	2.46	0.51
1:B:9:TYR:OH	2:B:301:GVX:N23	2.44	0.50
1:C:105:MET:SD	4:C:448:HOH:O	2.60	0.50
1:C:74:TYR:CE1	1:D:86:ILE:HG12	2.47	0.50
1:D:55:VAL:HB	1:D:56:PRO:HA	1.94	0.50
1:A:112[B]:6M6:C05	1:A:120:LYS:HE2	2.42	0.50
1:B:66:VAL:O	1:B:67:GLN:HB2	2.12	0.50
1:B:184:LEU:O	1:B:188:ILE:HG12	2.12	0.50
1:B:211:LYS:HB2	4:B:531:HOH:O	2.12	0.49
1:C:161:VAL:HG21	1:C:188:ILE:HB	1.95	0.48
1:C:17:GLU:HG2	1:C:166:TYR:OH	2.14	0.48
1:C:210:GLU:CD	1:C:210:GLU:H	2.16	0.48
1:C:113:PRO:HA	4:C:598:HOH:O	2.11	0.48
1:D:2:ALA:O	1:D:3[B]:GLU:HG3	2.13	0.47
1:A:141:LYS:NZ	4:A:412:HOH:O	2.47	0.47
1:C:89[A]:ARG:HD3	4:C:427:HOH:O	2.14	0.47
1:C:55:VAL:O	2:C:303:GVX:N10	2.48	0.47
1:C:171:ASP:HB3	1:C:174:LEU:HD12	1.97	0.46

Continued on next page...

Continued from previous page...

Atom-1	Atom-2	Interatomic distance (Å)	Clash overlap (Å)
1:B:114:PRO:HA	1:B:117:LYS:HD2	1.96	0.46
1:C:11:ASN:HD22	1:C:11:ASN:C	2.19	0.46
1:A:6:LYS:HG3	1:A:31:GLU:HB2	1.98	0.46
1:C:49:TYR:CE2	1:C:64:LYS:HE2	2.51	0.46
1:B:176:SER:O	1:B:182:LYS:NZ	2.34	0.45
1:C:74:TYR:CD1	1:D:86:ILE:HG12	2.52	0.45
1:A:215:GLU:O	1:A:219:ILE:HG13	2.17	0.45
1:D:7[A]:LEU:HD22	1:D:58:VAL:HG22	1.99	0.45
1:D:141:LYS:HE2	4:D:637:HOH:O	2.16	0.45
1:D:66:VAL:O	1:D:67:GLN:HB2	2.17	0.45
1:D:109:LEU:HD11	1:D:120:LYS:HB3	1.97	0.45
1:C:89[B]:ARG:HD3	4:D:421:HOH:O	2.16	0.44
1:C:55:VAL:HB	1:C:56:PRO:HA	1.98	0.44
1:C:86[B]:ILE:HG12	1:D:74:TYR:CE1	2.52	0.44
1:A:86[B]:ILE:HG12	1:B:74:TYR:HE1	1.82	0.44
1:A:9:TYR:OH	2:A:301:GVX:N23	2.50	0.44
1:A:17:GLU:OE1	1:A:20:ARG:HD2	2.18	0.44
1:C:209:ASP:OD1	1:C:212:SER:HB3	2.17	0.44
1:C:99:ILE:HG23	1:C:163:LEU:HD22	1.99	0.43
1:D:217:ARG:HB3	4:D:401:HOH:O	2.16	0.43
1:A:113:PRO:HB2	1:A:115:GLU:OE2	2.18	0.43
1:B:33:LYS:HD2	4:B:570:HOH:O	2.19	0.43
1:C:171:ASP:HB3	1:C:174:LEU:CD1	2.48	0.43
1:D:89[B]:ARG:HD3	4:D:517:HOH:O	2.18	0.43
1:C:6:LYS:HB2	1:C:59:GLU:HB2	2.00	0.43
1:A:99:ILE:HG23	1:A:163:LEU:HD22	2.01	0.42
1:B:147:TYR:CD2	1:B:153:LEU:HA	2.55	0.42
1:B:102:LEU:HD23	1:B:163:LEU:HD21	2.01	0.42
1:A:44:LEU:HD23	4:A:485:HOH:O	2.20	0.42
1:D:16:MET:CE	1:D:56:PRO:HB3	2.50	0.42
1:B:213:LEU:HD12	1:B:213:LEU:O	2.20	0.42
1:C:114:PRO:HD3	4:C:598:HOH:O	2.20	0.42
1:C:7:LEU:N	1:C:7:LEU:HD23	2.34	0.42
1:A:87:LYS:HE2	4:B:539:HOH:O	2.20	0.42
1:B:16:MET:CE	1:B:56:PRO:HB3	2.50	0.42
1:C:213:LEU:O	1:C:216:ALA:HB3	2.20	0.41
1:A:86[B]:ILE:HG12	1:B:74:TYR:CE1	2.55	0.41
1:C:109:LEU:N	1:C:110:PRO:CD	2.82	0.41
1:D:109:LEU:CD1	1:D:120:LYS:HB3	2.51	0.41
1:B:109:LEU:N	1:B:110:PRO:CD	2.84	0.41
1:C:113:PRO:HA	1:C:114:PRO:HD3	1.68	0.41

Continued on next page...

Continued from previous page...

Atom-1	Atom-2	Interatomic distance (Å)	Clash overlap (Å)
1:D:84:LYS:HG2	1:D:88:GLU:OE1	2.21	0.41
1:A:109:LEU:HB3	1:A:110:PRO:CD	2.45	0.41
1:B:7:LEU:HD22	1:B:58:VAL:CG2	2.50	0.40

There are no symmetry-related clashes.

5.3 Torsion angles [i](#)

5.3.1 Protein backbone [i](#)

In the following table, the Percentiles column shows the percent Ramachandran outliers of the chain as a percentile score with respect to all X-ray entries followed by that with respect to entries of similar resolution.

The Analysed column shows the number of residues for which the backbone conformation was analysed, and the total number of residues.

Mol	Chain	Analysed	Favoured	Allowed	Outliers	Percentiles	
1	A	220/221 (100%)	213 (97%)	7 (3%)	0	100	100
1	B	219/221 (99%)	214 (98%)	5 (2%)	0	100	100
1	C	220/221 (100%)	210 (96%)	9 (4%)	1 (0%)	34	20
1	D	222/221 (100%)	211 (95%)	9 (4%)	2 (1%)	21	9
All	All	881/884 (100%)	848 (96%)	30 (3%)	3 (0%)	52	35

All (3) Ramachandran outliers are listed below:

Mol	Chain	Res	Type
1	D	3[A]	GLU
1	D	3[B]	GLU
1	C	114	PRO

5.3.2 Protein sidechains [i](#)

In the following table, the Percentiles column shows the percent sidechain outliers of the chain as a percentile score with respect to all X-ray entries followed by that with respect to entries of similar resolution.

The Analysed column shows the number of residues for which the sidechain conformation was analysed, and the total number of residues.

Mol	Chain	Analysed	Rotameric	Outliers	Percentiles	
1	A	196/194 (101%)	195 (100%)	1 (0%)	92	92
1	B	195/194 (100%)	194 (100%)	1 (0%)	92	92
1	C	196/194 (101%)	189 (96%)	7 (4%)	42	27
1	D	198/194 (102%)	196 (99%)	2 (1%)	82	79
All	All	785/776 (101%)	774 (99%)	11 (1%)	74	68

All (11) residues with a non-rotameric sidechain are listed below:

Mol	Chain	Res	Type
1	A	82	TYR
1	B	82	TYR
1	C	11	ASN
1	C	82	TYR
1	C	111	VAL
1	C	120	LYS
1	C	123	LEU
1	C	210	GLU
1	C	212	SER
1	D	39	GLU
1	D	82	TYR

Some sidechains can be flipped to improve hydrogen bonding and reduce clashes. All (3) such sidechains are listed below:

Mol	Chain	Res	Type
1	C	11	ASN
1	C	145	GLN
1	D	130	ASN

5.3.3 RNA ⓘ

There are no RNA molecules in this entry.

5.4 Non-standard residues in protein, DNA, RNA chains ⓘ

4 non-standard protein/DNA/RNA residues are modelled in this entry.

In the following table, the Counts columns list the number of bonds (or angles) for which Mogul statistics could be retrieved, the number of bonds (or angles) that are observed in the model and the number of bonds (or angles) that are defined in the chemical component dictionary. The Link column lists molecule types, if any, to which the group is linked. The Z score for a bond length

(or angle) is the number of standard deviations the observed value is removed from the expected value. A bond length (or angle) with $|Z| > 2$ is considered an outlier worth inspection. RMSZ is the root-mean-square of all Z scores of the bond lengths (or angles).

Mol	Type	Chain	Res	Link	Bond lengths			Bond angles		
					Counts	RMSZ	# Z > 2	Counts	RMSZ	# Z > 2
1	6M6	A	112[B]	-	14,17,18	1.85	2 (14%)	12,20,22	1.38	2 (16%)
1	6M6	B	112[B]	-	14,17,18	1.87	2 (14%)	12,20,22	1.72	3 (25%)
1	6M6	C	112[B]	-	14,17,18	2.06	2 (14%)	12,20,22	1.23	2 (16%)
1	6M6	D	112[B]	-	14,17,18	2.02	2 (14%)	12,20,22	1.37	2 (16%)

In the following table, the Chirals column lists the number of chiral outliers, the number of chiral centers analysed, the number of these observed in the model and the number defined in the chemical component dictionary. Similar counts are reported in the Torsion and Rings columns. '-' means no outliers of that kind were identified.

Mol	Type	Chain	Res	Link	Chirals	Torsions	Rings
1	6M6	A	112[B]	-	-	2/11/13/15	0/1/1/1
1	6M6	B	112[B]	-	-	0/11/13/15	0/1/1/1
1	6M6	C	112[B]	-	-	2/11/13/15	0/1/1/1
1	6M6	D	112[B]	-	-	2/11/13/15	0/1/1/1

All (8) bond length outliers are listed below:

Mol	Chain	Res	Type	Atoms	Z	Observed(Å)	Ideal(Å)
1	B	112[B]	6M6	C02-S01	-5.54	1.56	1.66
1	D	112[B]	6M6	C02-S01	-4.26	1.58	1.66
1	A	112[B]	6M6	C02-S01	-3.97	1.58	1.66
1	C	112[B]	6M6	C02-S01	-3.89	1.59	1.66
1	B	112[B]	6M6	C02-SG	3.68	1.80	1.75
1	A	112[B]	6M6	C02-SG	5.21	1.82	1.75
1	D	112[B]	6M6	C02-SG	5.81	1.83	1.75
1	C	112[B]	6M6	C02-SG	6.27	1.84	1.75

All (9) bond angle outliers are listed below:

Mol	Chain	Res	Type	Atoms	Z	Observed(°)	Ideal(°)
1	B	112[B]	6M6	SG-C02-S01	-4.72	116.58	125.38
1	D	112[B]	6M6	SG-C02-S01	-3.43	118.99	125.38
1	A	112[B]	6M6	SG-C02-S01	-2.93	119.91	125.38
1	C	112[B]	6M6	SG-C02-S01	-2.68	120.38	125.38
1	A	112[B]	6M6	C01-C03-C07	-2.56	107.12	112.83
1	B	112[B]	6M6	C01-C03-C07	-2.41	107.46	112.83

Continued on next page...

Continued from previous page...

Mol	Chain	Res	Type	Atoms	Z	Observed(°)	Ideal(°)
1	C	112[B]	6M6	C01-C03-C07	-2.36	107.58	112.83
1	B	112[B]	6M6	O-C-CA	-2.21	119.79	125.72
1	D	112[B]	6M6	C01-C03-C07	-2.20	107.93	112.83

There are no chirality outliers.

All (6) torsion outliers are listed below:

Mol	Chain	Res	Type	Atoms
1	A	112[B]	6M6	S01-C02-SG-CB
1	A	112[B]	6M6	N01-C02-SG-CB
1	D	112[B]	6M6	S01-C02-SG-CB
1	D	112[B]	6M6	N01-C02-SG-CB
1	C	112[B]	6M6	S01-C02-SG-CB
1	C	112[B]	6M6	N01-C02-SG-CB

There are no ring outliers.

1 monomer is involved in 1 short contact:

Mol	Chain	Res	Type	Clashes	Symm-Clashes
1	A	112[B]	6M6	1	0

5.5 Carbohydrates [i](#)

There are no carbohydrates in this entry.

5.6 Ligand geometry [i](#)

10 ligands are modelled in this entry.

In the following table, the Counts columns list the number of bonds (or angles) for which Mogul statistics could be retrieved, the number of bonds (or angles) that are observed in the model and the number of bonds (or angles) that are defined in the chemical component dictionary. The Link column lists molecule types, if any, to which the group is linked. The Z score for a bond length (or angle) is the number of standard deviations the observed value is removed from the expected value. A bond length (or angle) with $|Z| > 2$ is considered an outlier worth inspection. RMSZ is the root-mean-square of all Z scores of the bond lengths (or angles).

Mol	Type	Chain	Res	Link	Bond lengths			Bond angles		
					Counts	RMSZ	$\# Z > 2$	Counts	RMSZ	$\# Z > 2$
2	GVX	A	301	-	24,31,31	1.95	5 (20%)	25,39,39	1.46	2 (8%)
3	EDO	A	302	-	3,3,3	0.54	0	2,2,2	0.35	0

Mol	Type	Chain	Res	Link	Bond lengths			Bond angles		
					Counts	RMSZ	# Z > 2	Counts	RMSZ	# Z > 2
3	EDO	A	303	-	3,3,3	0.69	0	2,2,2	0.30	0
3	EDO	A	304	-	3,3,3	0.51	0	2,2,2	0.09	0
2	GVX	B	301	-	24,31,31	2.16	5 (20%)	25,39,39	1.38	4 (16%)
3	EDO	C	301	-	3,3,3	0.66	0	2,2,2	0.17	0
3	EDO	C	302	-	3,3,3	0.52	0	2,2,2	0.31	0
2	GVX	C	303	-	24,31,31	2.12	6 (25%)	25,39,39	1.56	4 (16%)
2	GVX	D	301	-	24,31,31	2.01	5 (20%)	25,39,39	1.68	3 (12%)
3	EDO	D	302	-	3,3,3	0.69	0	2,2,2	0.25	0

In the following table, the Chirals column lists the number of chiral outliers, the number of chiral centers analysed, the number of these observed in the model and the number defined in the chemical component dictionary. Similar counts are reported in the Torsion and Rings columns. '-' means no outliers of that kind were identified.

Mol	Type	Chain	Res	Link	Chirals	Torsions	Rings
2	GVX	A	301	-	-	0/27/33/33	0/1/1/1
3	EDO	A	302	-	-	0/1/1/1	0/0/0/0
3	EDO	A	303	-	-	0/1/1/1	0/0/0/0
3	EDO	A	304	-	-	0/1/1/1	0/0/0/0
2	GVX	B	301	-	-	0/27/33/33	0/1/1/1
3	EDO	C	301	-	-	0/1/1/1	0/0/0/0
3	EDO	C	302	-	-	0/1/1/1	0/0/0/0
2	GVX	C	303	-	-	2/27/33/33	0/1/1/1
2	GVX	D	301	-	-	1/27/33/33	0/1/1/1
3	EDO	D	302	-	-	0/1/1/1	0/0/0/0

All (21) bond length outliers are listed below:

Mol	Chain	Res	Type	Atoms	Z	Observed(Å)	Ideal(Å)
2	B	301	GVX	C19-S20	-5.00	1.75	1.81
2	D	301	GVX	C19-S20	-4.73	1.75	1.81
2	C	303	GVX	C19-S20	-4.27	1.76	1.81
2	A	301	GVX	C19-S20	-3.82	1.76	1.81
2	B	301	GVX	O13-C12	-2.12	1.19	1.23
2	C	303	GVX	O13-C12	-2.12	1.19	1.23
2	A	301	GVX	C11-N10	-2.08	1.41	1.45
2	D	301	GVX	C25-C26	2.08	1.57	1.51
2	C	303	GVX	C25-C26	2.25	1.58	1.51
2	A	301	GVX	C21-S20	2.27	1.78	1.75
2	D	301	GVX	C21-S20	2.78	1.79	1.75
2	B	301	GVX	C21-S20	3.15	1.79	1.75

Continued on next page...

Continued from previous page...

Mol	Chain	Res	Type	Atoms	Z	Observed(Å)	Ideal(Å)
2	C	303	GVX	C21-S20	3.36	1.80	1.75
2	D	301	GVX	C12-N14	3.99	1.41	1.33
2	B	301	GVX	C12-N14	4.24	1.42	1.33
2	A	301	GVX	C12-N14	4.43	1.42	1.33
2	C	303	GVX	C12-N14	4.93	1.43	1.33
2	D	301	GVX	C08-N10	5.18	1.44	1.34
2	A	301	GVX	C08-N10	5.27	1.44	1.34
2	C	303	GVX	C08-N10	5.29	1.44	1.34
2	B	301	GVX	C08-N10	5.99	1.46	1.34

All (13) bond angle outliers are listed below:

Mol	Chain	Res	Type	Atoms	Z	Observed(°)	Ideal(°)
2	D	301	GVX	S20-C21-S22	-5.02	116.02	125.38
2	A	301	GVX	S20-C21-S22	-4.84	116.36	125.38
2	D	301	GVX	C15-N14-C12	-4.13	116.52	122.36
2	C	303	GVX	C15-N14-C12	-3.59	117.29	122.36
2	C	303	GVX	S20-C21-S22	-3.59	118.69	125.38
2	B	301	GVX	S20-C21-S22	-3.38	119.07	125.38
2	B	301	GVX	C24-C25-C26	-2.95	106.27	112.83
2	C	303	GVX	C07-C06-C04	-2.49	108.30	114.18
2	A	301	GVX	C25-C24-N23	-2.25	106.30	111.88
2	B	301	GVX	C15-N14-C12	-2.13	119.35	122.36
2	D	301	GVX	C11-C12-N14	2.16	121.08	116.66
2	B	301	GVX	C11-C12-N14	2.24	121.23	116.66
2	C	303	GVX	C11-C12-N14	2.78	122.33	116.66

There are no chirality outliers.

All (3) torsion outliers are listed below:

Mol	Chain	Res	Type	Atoms
2	C	303	GVX	S22-C21-N23-C24
2	D	301	GVX	C25-C24-N23-C21
2	C	303	GVX	C25-C24-N23-C21

There are no ring outliers.

6 monomers are involved in 10 short contacts:

Mol	Chain	Res	Type	Clashes	Symm-Clashes
2	A	301	GVX	2	0
3	A	302	EDO	1	0

Continued on next page...

Continued from previous page...

Mol	Chain	Res	Type	Clashes	Symm-Clashes
3	A	304	EDO	1	0
2	B	301	GVX	1	0
3	C	302	EDO	4	0
2	C	303	GVX	1	0

5.7 Other polymers [i](#)

There are no such residues in this entry.

5.8 Polymer linkage issues [i](#)

There are no chain breaks in this entry.

6 Fit of model and data ⓘ

6.1 Protein, DNA and RNA chains ⓘ

In the following table, the column labelled ‘#RSRZ> 2’ contains the number (and percentage) of RSRZ outliers, followed by percent RSRZ outliers for the chain as percentile scores relative to all X-ray entries and entries of similar resolution. The OWAB column contains the minimum, median, 95th percentile and maximum values of the occupancy-weighted average B-factor per residue. The column labelled ‘Q< 0.9’ lists the number of (and percentage) of residues with an average occupancy less than 0.9.

Mol	Chain	Analysed	<RSRZ>	#RSRZ>2	OWAB(Å ²)	Q<0.9
1	A	220/221 (99%)	-0.01	6 (2%) 58 67	15, 29, 57, 70	0
1	B	220/221 (99%)	-0.13	2 (0%) 85 89	19, 31, 50, 77	0
1	C	220/221 (99%)	0.08	8 (3%) 46 56	14, 29, 63, 80	0
1	D	220/221 (99%)	-0.01	7 (3%) 51 60	13, 26, 61, 77	0
All	All	880/884 (99%)	-0.02	23 (2%) 59 68	13, 29, 58, 80	0

All (23) RSRZ outliers are listed below:

Mol	Chain	Res	Type	RSRZ
1	B	2	ALA	8.3
1	C	2	ALA	6.9
1	C	113	PRO	6.1
1	C	111	VAL	5.3
1	D	2	ALA	5.2
1	D	113	PRO	5.0
1	C	110	PRO	4.1
1	C	3	GLU	3.3
1	A	222	PHE	3.2
1	B	3	GLU	3.1
1	D	222	PHE	3.0
1	C	115	GLU	3.0
1	A	210	GLU	2.9
1	D	114	PRO	2.8
1	A	114	PRO	2.8
1	A	219	ILE	2.7
1	C	116	GLU	2.6
1	C	117	LYS	2.5
1	D	111	VAL	2.4
1	D	117	LYS	2.3
1	A	2	ALA	2.2

Continued on next page...

Continued from previous page...

Mol	Chain	Res	Type	RSRZ
1	A	216	ALA	2.2
1	D	121	LEU	2.1

6.2 Non-standard residues in protein, DNA, RNA chains [i](#)

In the following table, the Atoms column lists the number of modelled atoms in the group and the number defined in the chemical component dictionary. LLDF column lists the quality of electron density of the group with respect to its neighbouring residues in protein, DNA or RNA chains. The B-factors column lists the minimum, median, 95th percentile and maximum values of B factors of atoms in the group. The column labelled 'Q< 0.9' lists the number of atoms with occupancy less than 0.9.

Mol	Type	Chain	Res	Atoms	RSCC	RSR	LLDF	B-factors(Å ²)	Q<0.9
1	6M6	C	112[B]	17/18	0.79	0.21	-	55,63,80,85	11
1	6M6	A	112[B]	17/18	0.85	0.13	-	48,54,61,72	11
1	6M6	D	112[B]	17/18	0.87	0.16	-	54,59,68,69	11
1	6M6	B	112[B]	17/18	0.94	0.12	-	23,34,48,49	11

6.3 Carbohydrates [i](#)

There are no carbohydrates in this entry.

6.4 Ligands [i](#)

In the following table, the Atoms column lists the number of modelled atoms in the group and the number defined in the chemical component dictionary. LLDF column lists the quality of electron density of the group with respect to its neighbouring residues in protein, DNA or RNA chains. The B-factors column lists the minimum, median, 95th percentile and maximum values of B factors of atoms in the group. The column labelled 'Q< 0.9' lists the number of atoms with occupancy less than 0.9.

Mol	Type	Chain	Res	Atoms	RSCC	RSR	LLDF	B-factors(Å ²)	Q<0.9
3	EDO	C	302	4/4	0.83	0.23	11.38	36,45,45,47	0
3	EDO	A	302	4/4	0.85	0.25	8.89	38,39,42,44	0
3	EDO	C	301	4/4	0.89	0.18	3.27	25,38,42,50	0
3	EDO	A	303	4/4	0.92	0.17	2.81	22,23,36,38	0
3	EDO	D	302	4/4	0.87	0.19	2.51	25,42,48,51	0
3	EDO	A	304	4/4	0.92	0.18	1.46	31,31,32,42	0
2	GVX	B	301	31/31	0.94	0.12	0.56	16,30,41,47	0
2	GVX	A	301	31/31	0.94	0.13	-0.03	17,28,51,55	0

Continued on next page...

Continued from previous page...

Mol	Type	Chain	Res	Atoms	RSCC	RSR	LLDF	B-factors(\AA^2)	Q<0.9
2	GVX	C	303	31/31	0.92	0.13	-0.17	20,34,57,63	0
2	GVX	D	301	31/31	0.94	0.12	-0.29	18,27,57,58	0

6.5 Other polymers [i](#)

There are no such residues in this entry.