



# wwPDB X-ray Structure Validation Summary Report ⓘ

Feb 1, 2016 – 02:56 AM GMT

PDB ID : 2JDH  
Title : Lectin PA-IIL of P.aeruginosa complexed with disaccharide derivative  
Authors : Marotte, K.; Sabin, C.; Preville, C.; Pymbock, M.; Deguise, I.; Wimmerova, M.; Mitchell, E.P.; Imberty, A.; Roy, R.  
Deposited on : 2007-01-09  
Resolution : 1.10 Å(reported)

This is a wwPDB X-ray Structure Validation Summary Report for a publicly released PDB entry.  
We welcome your comments at [validation@mail.wwpdb.org](mailto:validation@mail.wwpdb.org)  
A user guide is available at  
<http://wwpdb.org/validation/2016/XrayValidationReportHelp>  
with specific help available everywhere you see the ⓘ symbol.

---

The following versions of software and data (see [references ⓘ](#)) were used in the production of this report:

MolProbity : 4.02b-467  
Mogul : 1.7 (RC4), CSD as536be (2015)  
Xtriage (Phenix) : 1.9-1692  
EDS : rb-20026688  
Percentile statistics : 20151230.v01 (using entries in the PDB archive December 30th 2015)  
Refmac : 5.8.0135  
CCP4 : 6.5.0  
Ideal geometry (proteins) : Engh & Huber (2001)  
Ideal geometry (DNA, RNA) : Parkinson et al. (1996)  
Validation Pipeline (wwPDB-VP) : trunk26865

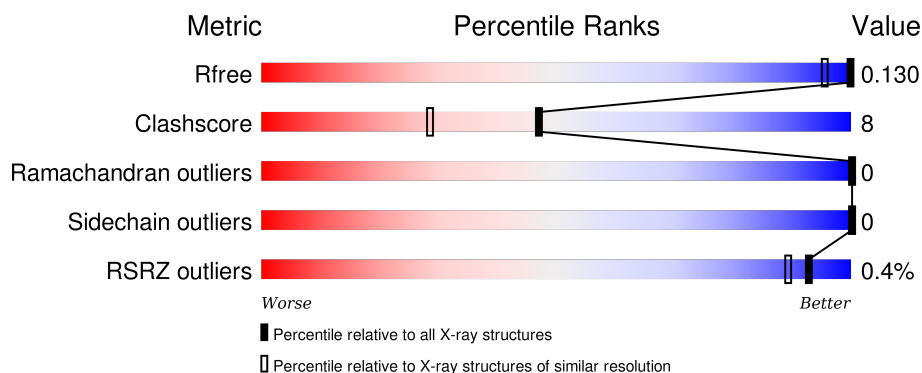
# 1 Overall quality at a glance ⓘ

The following experimental techniques were used to determine the structure:

## *X-RAY DIFFRACTION*

The reported resolution of this entry is 1.10 Å.

Percentile scores (ranging between 0-100) for global validation metrics of the entry are shown in the following graphic. The table shows the number of entries on which the scores are based.



Metric	Whole archive (#Entries)	Similar resolution (#Entries, resolution range(Å))
$R_{free}$	91344	1006 (1.14-1.06)
Clashscore	102246	1055 (1.14-1.06)
Ramachandran outliers	100387	1016 (1.14-1.06)
Sidechain outliers	100360	1014 (1.14-1.06)
RSRZ outliers	91569	1009 (1.14-1.06)

The table below summarises the geometric issues observed across the polymeric chains and their fit to the electron density. The red, orange, yellow and green segments on the lower bar indicate the fraction of residues that contain outliers for  $\geq 3$ , 2, 1 and 0 types of geometric quality criteria. A grey segment represents the fraction of residues that are not modelled. The numeric value for each fraction is indicated below the corresponding segment, with a dot representing fractions  $\leq 5\%$ . The upper red bar (where present) indicates the fraction of residues that have poor fit to the electron density. The numeric value is given above the bar.

Mol	Chain	Length	Quality of chain
1	A	115	<div> <div>90%</div> <div>10%</div> </div>
1	B	115	<div> <div>88%</div> <div>11%</div> </div>
1	C	115	<div> <div>%</div> <div>88%</div> <div>11%</div> </div>
1	D	115	<div> <div>%</div> <div>85%</div> <div>14%</div> </div>

## 2 Entry composition [i](#)

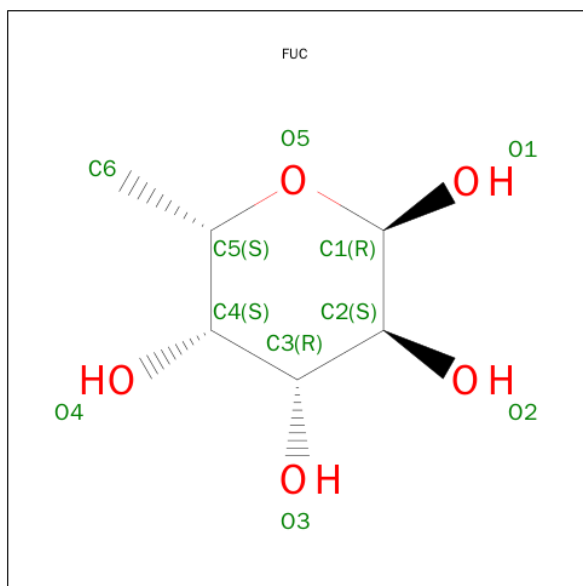
There are 7 unique types of molecules in this entry. The entry contains 4379 atoms, of which 0 are hydrogens and 0 are deuteriums.

In the tables below, the ZeroOcc column contains the number of atoms modelled with zero occupancy, the AltConf column contains the number of residues with at least one atom in alternate conformation and the Trace column contains the number of residues modelled with at most 2 atoms.

- Molecule 1 is a protein called FUCOSE-BINDING LECTIN PA-IIL.

Mol	Chain	Residues	Atoms				ZeroOcc	AltConf	Trace
1	A	114	Total	C	N	O	0	5	0
			870	536	149	185			
1	B	114	Total	C	N	O	0	6	0
			881	541	152	188			
1	C	114	Total	C	N	O	0	7	0
			888	546	153	189			
1	D	114	Total	C	N	O	0	7	0
			888	544	155	189			

- Molecule 2 is SUGAR (ALPHA-L-FUCOSE) (three-letter code: FUC) (formula: C<sub>6</sub>H<sub>12</sub>O<sub>5</sub>).



Mol	Chain	Residues	Atoms			ZeroOcc	AltConf
2	A	1	Total	C	O	0	0
			11	6	5		

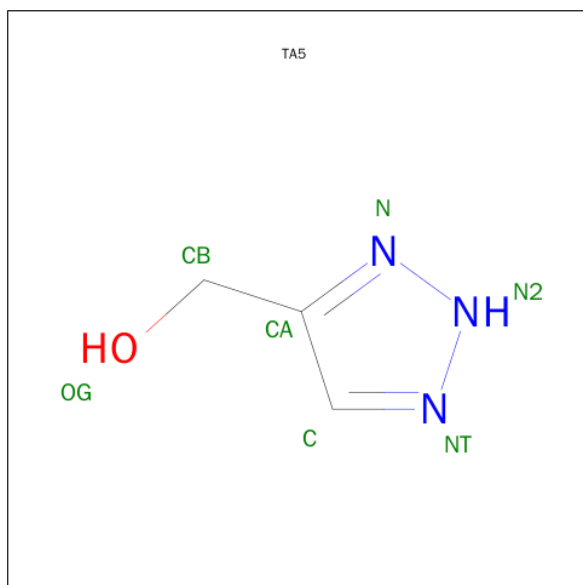
- Molecule 3 is CALCIUM ION (three-letter code: CA) (formula: Ca).

Mol	Chain	Residues	Atoms	ZeroOcc	AltConf
3	B	2	Total Ca 2 2	0	0
3	A	2	Total Ca 2 2	0	0
3	D	2	Total Ca 2 2	0	0
3	C	2	Total Ca 2 2	0	0

- Molecule 4 is a polymer of unknown type called SUGAR (2-MER).

Mol	Chain	Residues	Atoms	ZeroOcc	AltConf
4	B	2	Total C N O 24 14 1 9	0	0
4	C	2	Total C N O 24 14 1 9	0	0
4	D	2	Total C N O 24 14 1 9	0	0

- Molecule 5 is 2H-1,2,3-TRIAZOL-4-YLMETHANOL (three-letter code: TA5) (formula:  $C_3H_5N_3O$ ).



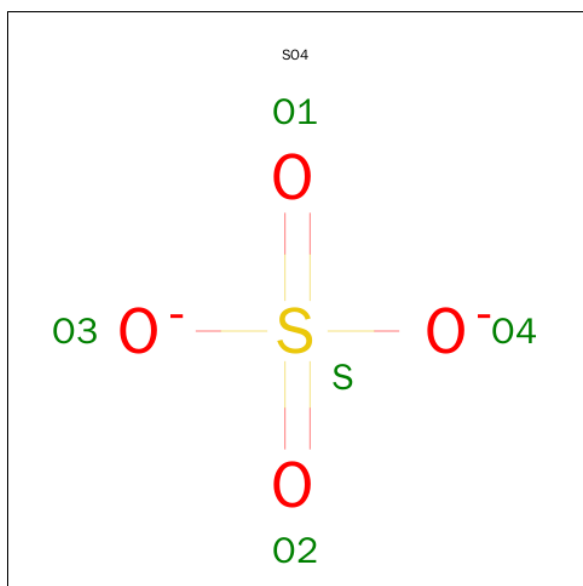
Mol	Chain	Residues	Atoms	ZeroOcc	AltConf
5	B	1	Total C N O 7 3 3 1	0	0
5	C	1	Total C N O 7 3 3 1	0	0

*Continued on next page...*

*Continued from previous page...*

Mol	Chain	Residues	Atoms				ZeroOcc	AltConf
5	D	1	Total	C	N	O	0	0
			7	3	3	1		

- Molecule 6 is SULFATE ION (three-letter code: SO<sub>4</sub>) (formula: O<sub>4</sub>S).



Mol	Chain	Residues	Atoms			ZeroOcc	AltConf
6	C	1	Total	O	S	0	0
			5	4	1		


- Molecule 7 is water.

Mol	Chain	Residues	Atoms		ZeroOcc	AltConf
7	A	188	Total	O	0	0
			188	188		
7	B	185	Total	O	0	0
			185	185		
7	C	177	Total	O	0	0
			177	177		
7	D	185	Total	O	0	0
			185	185		

### 3 Residue-property plots [i](#)


These plots are drawn for all protein, RNA and DNA chains in the entry. The first graphic for a chain summarises the proportions of errors displayed in the second graphic. The second graphic shows the sequence view annotated by issues in geometry and electron density. Residues are color-coded according to the number of geometric quality criteria for which they contain at least one outlier: green = 0, yellow = 1, orange = 2 and red = 3 or more. A red dot above a residue indicates a poor fit to the electron density ( $RSRZ > 2$ ). Stretches of 2 or more consecutive residues without any outlier are shown as a green connector. Residues present in the sample, but not in the model, are shown in grey.

- Molecule 1: FUCOSE-BINDING LECTIN PA-IIL

Chain A: 




- Molecule 1: FUCOSE-BINDING LECTIN PA-IIL

Chain B: 




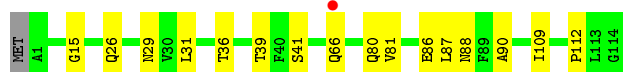
- Molecule 1: FUCOSE-BINDING LECTIN PA-IIL

Chain C: 



- Molecule 1: FUCOSE-BINDING LECTIN PA-IIL

Chain D: 



## 4 Data and refinement statistics

Property	Value	Source
Space group	P 1 21 1	Depositor
Cell constants a, b, c, $\alpha$ , $\beta$ , $\gamma$	52.55Å 72.83Å 54.36Å 90.00° 94.29° 90.00°	Depositor
Resolution (Å)	54.23 – 1.10 22.16 – 1.10	Depositor EDS
% Data completeness (in resolution range)	96.2 (54.23-1.10) 96.2 (22.16-1.10)	Depositor EDS
$R_{merge}$	0.05	Depositor
$R_{sym}$	(Not available)	Depositor
$\langle I/\sigma(I) \rangle$ <sup>1</sup>	7.95 (at 1.10Å)	Xtriage
Refinement program	REFMAC 5.2.0019	Depositor
R, $R_{free}$	0.107 , 0.131 0.108 , 0.130	Depositor DCC
$R_{free}$ test set	4790 reflections (3.11%)	DCC
Wilson B-factor (Å <sup>2</sup> )	6.5	Xtriage
Anisotropy	0.024	Xtriage
Bulk solvent $k_{sol}$ (e/Å <sup>3</sup> ), $B_{sol}$ (Å <sup>2</sup> )	0.41 , 52.6	EDS
Estimated twinning fraction	0.014 for l,-k,h	Xtriage
L-test for twinning <sup>2</sup>	$\langle  L  \rangle = 0.50$ , $\langle L^2 \rangle = 0.33$	Xtriage
Outliers	0 of 158706 reflections	Xtriage
$F_o, F_c$ correlation	0.98	EDS
Total number of atoms	4379	wwPDB-VP
Average B, all atoms (Å <sup>2</sup> )	10.0	wwPDB-VP

Xtriage's analysis on translational NCS is as follows: *The largest off-origin peak in the Patterson function is 7.66% of the height of the origin peak. No significant pseudotranslation is detected.*

<sup>1</sup>Intensities estimated from amplitudes.

<sup>2</sup>Theoretical values of  $\langle |L| \rangle$ ,  $\langle L^2 \rangle$  for acentric reflections are 0.5, 0.375 respectively for untwinned datasets, and 0.333, 0.2 for perfectly twinned datasets.

## 5 Model quality [i](#)

### 5.1 Standard geometry [i](#)

Bond lengths and bond angles in the following residue types are not validated in this section: FUC, TA5, CA, NAG, SO4

The Z score for a bond length (or angle) is the number of standard deviations the observed value is removed from the expected value. A bond length (or angle) with  $|Z| > 5$  is considered an outlier worth inspection. RMSZ is the root-mean-square of all Z scores of the bond lengths (or angles).

Mol	Chain	Bond lengths		Bond angles	
		RMSZ	$\# Z  > 5$	RMSZ	$\# Z  > 5$
1	A	0.90	0/880	0.91	1/1206 (0.1%)
1	B	0.96	0/891	0.88	0/1221
1	C	0.93	1/898 (0.1%)	0.95	2/1230 (0.2%)
1	D	0.91	0/898	0.85	0/1230
All	All	0.92	1/3567 (0.0%)	0.90	3/4887 (0.1%)

All (1) bond length outliers are listed below:

Mol	Chain	Res	Type	Atoms	Z	Observed(Å)	Ideal(Å)
1	C	60	SER	CB-OG	5.29	1.49	1.42

All (3) bond angle outliers are listed below:

Mol	Chain	Res	Type	Atoms	Z	Observed(°)	Ideal(°)
1	C	101	ASP	CB-CG-OD2	-5.41	113.43	118.30
1	C	13	ARG	NE-CZ-NH1	-5.38	117.61	120.30
1	A	102	TYR	CB-CG-CD2	-5.16	117.90	121.00

There are no chirality outliers.

There are no planarity outliers.

### 5.2 Too-close contacts [i](#)

In the following table, the Non-H and H(model) columns list the number of non-hydrogen atoms and hydrogen atoms in the chain respectively. The H(added) column lists the number of hydrogen atoms added and optimized by MolProbity. The Clashes column lists the number of clashes within the asymmetric unit, whereas Symm-Clashes lists symmetry related clashes.



Mol	Chain	Non-H	H(model)	H(added)	Clashes	Symm-Clashes
1	A	870	0	842	10	0
1	B	881	0	848	17	0
1	C	888	0	856	13	0
1	D	888	0	856	24	0
2	A	11	0	9	0	0
3	A	2	0	0	0	0
3	B	2	0	0	0	0
3	C	2	0	0	0	0
3	D	2	0	0	0	0
4	B	24	0	18	0	0
4	C	24	0	19	0	0
4	D	24	0	19	0	0
5	B	7	0	3	0	0
5	C	7	0	3	0	0
5	D	7	0	3	0	0
6	C	5	0	0	0	0
7	A	188	0	0	3	0
7	B	185	0	0	9	0
7	C	177	0	0	0	0
7	D	185	0	0	5	0
All	All	4379	0	3476	54	0

The all-atom clashscore is defined as the number of clashes found per 1000 atoms (including hydrogen atoms). The all-atom clashscore for this structure is 8.

The worst 5 of 54 close contacts within the same asymmetric unit are listed below, sorted by their clash magnitude.

Atom-1	Atom-2	Interatomic distance (Å)	Clash overlap (Å)
1:D:31:LEU:HD11	1:D:66:GLN:NE2	1.32	1.44
1:D:31:LEU:CD1	1:D:66:GLN:NE2	2.15	1.07
1:B:35:GLU:HG3	7:B:2073:HOH:O	1.61	1.01
1:D:31:LEU:HD11	1:D:66:GLN:HE21	1.18	1.00
1:C:81[C]:VAL:HG21	1:D:81[C]:VAL:HG11	1.45	0.97

There are no symmetry-related clashes.

## 5.3 Torsion angles [i](#)

### 5.3.1 Protein backbone [i](#)

In the following table, the Percentiles column shows the percent Ramachandran outliers of the chain as a percentile score with respect to all X-ray entries followed by that with respect to entries of similar resolution.

The Analysed column shows the number of residues for which the backbone conformation was analysed, and the total number of residues.

Mol	Chain	Analysed	Favoured	Allowed	Outliers	Percentiles	
1	A	118/115 (103%)	115 (98%)	3 (2%)	0	100	100
1	B	119/115 (104%)	113 (95%)	6 (5%)	0	100	100
1	C	120/115 (104%)	115 (96%)	5 (4%)	0	100	100
1	D	120/115 (104%)	116 (97%)	4 (3%)	0	100	100
All	All	477/460 (104%)	459 (96%)	18 (4%)	0	100	100

There are no Ramachandran outliers to report.

### 5.3.2 Protein sidechains [i](#)

In the following table, the Percentiles column shows the percent sidechain outliers of the chain as a percentile score with respect to all X-ray entries followed by that with respect to entries of similar resolution.

The Analysed column shows the number of residues for which the sidechain conformation was analysed, and the total number of residues.

Mol	Chain	Analysed	Rotameric	Outliers	Percentiles	
1	A	99/94 (105%)	99 (100%)	0	100	100
1	B	100/94 (106%)	100 (100%)	0	100	100
1	C	101/94 (107%)	101 (100%)	0	100	100
1	D	101/94 (107%)	101 (100%)	0	100	100
All	All	401/376 (107%)	401 (100%)	0	100	100

There are no protein residues with a non-rotameric sidechain to report.

Some sidechains can be flipped to improve hydrogen bonding and reduce clashes. 5 of 8 such sidechains are listed below:

Mol	Chain	Res	Type
1	B	88	ASN
1	D	88	ASN
1	C	88	ASN
1	B	80	GLN
1	C	43	GLN

### 5.3.3 RNA ⓘ

There are no RNA molecules in this entry.

## 5.4 Non-standard residues in protein, DNA, RNA chains ⓘ

There are no non-standard protein/DNA/RNA residues in this entry.

## 5.5 Carbohydrates ⓘ

6 carbohydrates are modelled in this entry.

In the following table, the Counts columns list the number of bonds (or angles) for which Mogul statistics could be retrieved, the number of bonds (or angles) that are observed in the model and the number of bonds (or angles) that are defined in the chemical component dictionary. The Link column lists molecule types, if any, to which the group is linked. The Z score for a bond length (or angle) is the number of standard deviations the observed value is removed from the expected value. A bond length (or angle) with  $|Z| > 2$  is considered an outlier worth inspection. RMSZ is the root-mean-square of all Z scores of the bond lengths (or angles).

Mol	Type	Chain	Res	Link	Bond lengths			Bond angles		
					Counts	RMSZ	$\# Z  > 2$	Counts	RMSZ	$\# Z  > 2$
4	FUC	B	1115	3,4	10,10,11	1.02	0	14,14,16	1.12	1 (7%)
4	NAG	B	1116	5,4	14,14,15	0.80	0	15,19,21	1.03	1 (6%)
4	FUC	C	1118	3,4	10,10,11	1.15	1 (10%)	14,14,16	1.05	0
4	NAG	C	1119	5,4	14,14,15	0.87	0	15,19,21	0.98	1 (6%)
4	FUC	D	1115	3,4	10,10,11	0.88	0	14,14,16	1.10	0
4	NAG	D	1116	5,4	14,14,15	0.85	0	15,19,21	1.00	1 (6%)

In the following table, the Chirals column lists the number of chiral outliers, the number of chiral centers analysed, the number of these observed in the model and the number defined in the chemical component dictionary. Similar counts are reported in the Torsion and Rings columns. '-' means no outliers of that kind were identified.

Mol	Type	Chain	Res	Link	Chirals	Torsions	Rings
4	FUC	B	1115	3,4	-	0/0/17/20	0/1/1/1
4	NAG	B	1116	5,4	-	0/6/23/26	0/1/1/1
4	FUC	C	1118	3,4	-	0/0/17/20	0/1/1/1
4	NAG	C	1119	5,4	-	0/6/23/26	0/1/1/1
4	FUC	D	1115	3,4	-	0/0/17/20	0/1/1/1
4	NAG	D	1116	5,4	-	0/6/23/26	0/1/1/1

All (1) bond length outliers are listed below:

Mol	Chain	Res	Type	Atoms	Z	Observed(Å)	Ideal(Å)
4	C	1118	FUC	C2-C3	-2.65	1.48	1.52

All (4) bond angle outliers are listed below:

Mol	Chain	Res	Type	Atoms	Z	Observed(°)	Ideal(°)
4	C	1119	NAG	C1-O5-C5	-2.23	109.42	112.25
4	B	1116	NAG	C4-C3-C2	-2.20	107.81	111.23
4	D	1116	NAG	C4-C3-C2	-2.01	108.10	111.23
4	B	1115	FUC	O2-C2-C1	2.17	113.55	109.21

There are no chirality outliers.

There are no torsion outliers.

There are no ring outliers.

No monomer is involved in short contacts.

## 5.6 Ligand geometry

Of 13 ligands modelled in this entry, 8 are monoatomic - leaving 5 for Mogul analysis.

In the following table, the Counts columns list the number of bonds (or angles) for which Mogul statistics could be retrieved, the number of bonds (or angles) that are observed in the model and the number of bonds (or angles) that are defined in the chemical component dictionary. The Link column lists molecule types, if any, to which the group is linked. The Z score for a bond length (or angle) is the number of standard deviations the observed value is removed from the expected value. A bond length (or angle) with  $|Z| > 2$  is considered an outlier worth inspection. RMSZ is the root-mean-square of all Z scores of the bond lengths (or angles).

Mol	Type	Chain	Res	Link	Bond lengths			Bond angles		
					Counts	RMSZ	$\# Z  > 2$	Counts	RMSZ	$\# Z  > 2$
2	FUC	A	1115	3	11,11,11	0.88	0	16,16,16	0.83	0
5	TA5	B	1117	4	6,7,7	2.46	2 (33%)	3,8,8	3.85	3 (100%)

Mol	Type	Chain	Res	Link	Bond lengths			Bond angles		
					Counts	RMSZ	# Z  > 2	Counts	RMSZ	# Z  > 2
6	SO4	C	1115	-	4,4,4	0.30	0	6,6,6	0.25	0
5	TA5	C	1120	4	6,7,7	2.28	3 (50%)	3,8,8	3.61	3 (100%)
5	TA5	D	1117	4	6,7,7	2.16	2 (33%)	3,8,8	3.15	2 (66%)

In the following table, the Chirals column lists the number of chiral outliers, the number of chiral centers analysed, the number of these observed in the model and the number defined in the chemical component dictionary. Similar counts are reported in the Torsion and Rings columns. '-' means no outliers of that kind were identified.

Mol	Type	Chain	Res	Link	Chirals	Torsions	Rings
2	FUC	A	1115	3	-	0/0/20/20	0/1/1/1
5	TA5	B	1117	4	-	0/0/2/2	0/1/1/1
6	SO4	C	1115	-	-	0/0/0/0	0/0/0/0
5	TA5	C	1120	4	-	0/0/2/2	0/1/1/1
5	TA5	D	1117	4	-	0/0/2/2	0/1/1/1

The worst 5 of 7 bond length outliers are listed below:

Mol	Chain	Res	Type	Atoms	Z	Observed(Å)	Ideal(Å)
5	C	1120	TA5	C-NT	2.29	1.38	1.33
5	C	1120	TA5	NT-N2	3.37	1.40	1.34
5	B	1117	TA5	NT-N2	3.52	1.40	1.34
5	C	1120	TA5	N-N2	3.55	1.40	1.34
5	D	1117	TA5	NT-N2	3.58	1.40	1.34

The worst 5 of 8 bond angle outliers are listed below:

Mol	Chain	Res	Type	Atoms	Z	Observed(°)	Ideal(°)
5	B	1117	TA5	NT-N2-N	-5.33	104.70	111.37
5	C	1120	TA5	NT-N2-N	-5.29	104.74	111.37
5	D	1117	TA5	NT-N2-N	-4.71	105.47	111.37
5	B	1117	TA5	C-CA-N	-3.07	106.49	111.42
5	B	1117	TA5	OG-CB-CA	-2.56	106.83	112.37

There are no chirality outliers.

There are no torsion outliers.

There are no ring outliers.

No monomer is involved in short contacts.

## 5.7 Other polymers [i](#)

There are no such residues in this entry.

## 5.8 Polymer linkage issues [i](#)

There are no chain breaks in this entry.

## 6 Fit of model and data [i](#)

### 6.1 Protein, DNA and RNA chains [i](#)

In the following table, the column labelled ‘#RSRZ> 2’ contains the number (and percentage) of RSRZ outliers, followed by percent RSRZ outliers for the chain as percentile scores relative to all X-ray entries and entries of similar resolution. The OWAB column contains the minimum, median, 95<sup>th</sup> percentile and maximum values of the occupancy-weighted average B-factor per residue. The column labelled ‘Q< 0.9’ lists the number of (and percentage) of residues with an average occupancy less than 0.9.

Mol	Chain	Analysed	<RSRZ>	#RSRZ>2	OWAB(Å <sup>2</sup> )	Q<0.9
1	A	114/115 (99%)	-0.52	0 100 100	4, 6, 10, 18	1 (0%)
1	B	114/115 (99%)	-0.43	0 100 100	4, 6, 13, 25	0
1	C	114/115 (99%)	-0.35	1 (0%) 85 81	4, 6, 12, 28	2 (1%)
1	D	114/115 (99%)	-0.42	1 (0%) 85 81	5, 7, 15, 23	0
All	All	456/460 (99%)	-0.43	2 (0%) 93 89	4, 6, 13, 28	3 (0%)

All (2) RSRZ outliers are listed below:

Mol	Chain	Res	Type	RSRZ
1	C	70	ASN	3.7
1	D	66	GLN	2.4

### 6.2 Non-standard residues in protein, DNA, RNA chains [i](#)

There are no non-standard protein/DNA/RNA residues in this entry.

### 6.3 Carbohydrates [i](#)

In the following table, the Atoms column lists the number of modelled atoms in the group and the number defined in the chemical component dictionary. LLDF column lists the quality of electron density of the group with respect to its neighbouring residues in protein, DNA or RNA chains. The B-factors column lists the minimum, median, 95<sup>th</sup> percentile and maximum values of B factors of atoms in the group. The column labelled ‘Q< 0.9’ lists the number of atoms with occupancy less than 0.9.

Mol	Type	Chain	Res	Atoms	RSCC	RSR	LLDF	B-factors(Å <sup>2</sup> )	Q<0.9
4	NAG	C	1119	14/15	0.98	0.09	0.94	7,12,18,20	0
4	FUC	C	1118	10/11	0.99	0.07	0.92	6,6,7,8	0
4	FUC	B	1115	10/11	0.99	0.04	0.30	4,5,6,7	0

*Continued on next page...*

*Continued from previous page...*

Mol	Type	Chain	Res	Atoms	RSCC	RSR	LLDF	B-factors( $\text{\AA}^2$ )	Q<0.9
4	FUC	D	1115	10/11	0.99	0.04	-0.36	5,6,7,8	0
4	NAG	B	1116	14/15	0.97	0.14	-	6,12,24,25	0
4	NAG	D	1116	14/15	0.97	0.11	-	7,12,25,25	0

## 6.4 Ligands [i](#)

In the following table, the Atoms column lists the number of modelled atoms in the group and the number defined in the chemical component dictionary. LLDF column lists the quality of electron density of the group with respect to its neighbouring residues in protein, DNA or RNA chains. The B-factors column lists the minimum, median, 95<sup>th</sup> percentile and maximum values of B factors of atoms in the group. The column labelled 'Q< 0.9' lists the number of atoms with occupancy less than 0.9.

Mol	Type	Chain	Res	Atoms	RSCC	RSR	LLDF	B-factors( $\text{\AA}^2$ )	Q<0.9
2	FUC	A	1115	11/11	0.99	0.05	-0.13	5,5,6,7	0
6	SO4	C	1115	5/5	0.99	0.05	-0.24	8,9,12,14	0
3	CA	C	1116	1/1	1.00	0.03	-0.79	5,5,5,5	0
3	CA	B	1118	1/1	1.00	0.04	-0.93	4,4,4,4	0
3	CA	D	1119	1/1	1.00	0.04	-1.20	5,5,5,5	0
3	CA	A	1116	1/1	1.00	0.03	-1.24	4,4,4,4	0
3	CA	C	1117	1/1	1.00	0.03	-1.42	5,5,5,5	0
3	CA	B	1119	1/1	1.00	0.04	-1.66	4,4,4,4	0
3	CA	D	1118	1/1	1.00	0.03	-1.80	4,4,4,4	0
3	CA	A	1117	1/1	1.00	0.03	-1.87	4,4,4,4	0
5	TA5	C	1120	7/7	0.88	0.22	-	24,25,39,40	0
5	TA5	D	1117	7/7	0.85	0.27	-	22,29,41,42	0
5	TA5	B	1117	7/7	0.91	0.24	-	20,27,36,37	0

## 6.5 Other polymers [i](#)

There are no such residues in this entry.