



# Full wwPDB X-ray Structure Validation Report ⓘ

May 22, 2016 – 11:17 PM EDT

PDB ID : 5JE8  
Title : The crystal structure of Bacillus cereus 3-hydroxyisobutyrate dehydrogenase  
in complex with NAD  
Authors : Park, S.C.; Yoon, S.I.  
Deposited on : 2016-04-18  
Resolution : 2.10 Å(reported)

This is a Full wwPDB X-ray Structure Validation Report for a publicly released PDB entry.  
We welcome your comments at [validation@mail.wwpdb.org](mailto:validation@mail.wwpdb.org)  
A user guide is available at  
<http://wwpdb.org/validation/2016/XrayValidationReportHelp>  
with specific help available everywhere you see the ⓘ symbol.

---

The following versions of software and data (see [references ⓘ](#)) were used in the production of this report:

MolProbity : 4.02b-467  
Mogul : 1.7.1 (RC1), CSD as537be (2016)  
Xtriage (Phenix) : 1.9-1692  
EDS : rb-20027457  
Percentile statistics : 20151230.v01 (using entries in the PDB archive December 30th 2015)  
Refmac : 5.8.0135  
CCP4 : 6.5.0  
Ideal geometry (proteins) : Engh & Huber (2001)  
Ideal geometry (DNA, RNA) : Parkinson et al. (1996)  
Validation Pipeline (wwPDB-VP) : rb-20027457



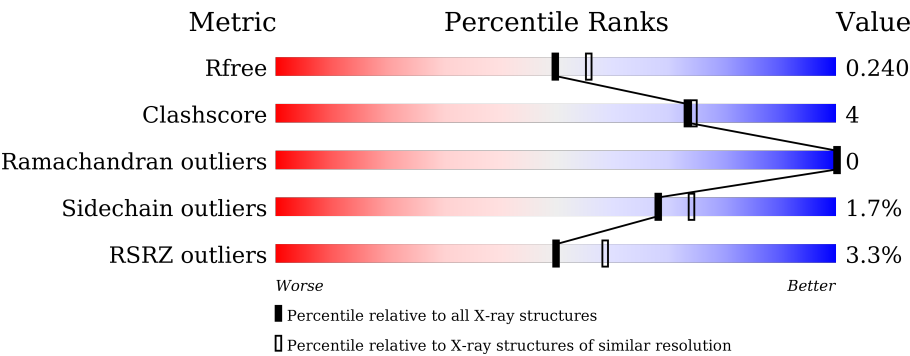
# 1 Overall quality at a glance i

The following experimental techniques were used to determine the structure:

*X-RAY DIFFRACTION*

The reported resolution of this entry is 2.10 Å.

Percentile scores (ranging between 0-100) for global validation metrics of the entry are shown in the following graphic. The table shows the number of entries on which the scores are based.



Metric	Whole archive (#Entries)	Similar resolution (#Entries, resolution range(Å))
$R_{free}$	91344	3939 (2.10-2.10)
Clashscore	102246	4460 (2.10-2.10)
Ramachandran outliers	100387	4413 (2.10-2.10)
Sidechain outliers	100360	4414 (2.10-2.10)
RSRZ outliers	91569	3948 (2.10-2.10)

The table below summarises the geometric issues observed across the polymeric chains and their fit to the electron density. The red, orange, yellow and green segments on the lower bar indicate the fraction of residues that contain outliers for  $\geq 3$ , 2, 1 and 0 types of geometric quality criteria. A grey segment represents the fraction of residues that are not modelled. The numeric value for each fraction is indicated below the corresponding segment, with a dot representing fractions  $\leq 5\%$ . The upper red bar (where present) indicates the fraction of residues that have poor fit to the electron density. The numeric value is given above the bar.

Mol	Chain	Length	Quality of chain
1	A	302	<div><div>3%</div><div>90%6%</div><div>.</div></div>
1	B	302	<div><div>%</div><div>88%9%</div><div>.</div></div>
1	C	302	<div><div>5%</div><div>87%8%</div><div>..</div></div>
1	D	302	<div><div>5%</div><div>86%10%</div><div>.</div></div>

The following table lists non-polymeric compounds, carbohydrate monomers and non-standard residues in protein, DNA, RNA chains that are outliers for geometric or electron-density-fit crite-



ria:

Mol	Type	Chain	Res	Chirality	Geometry	Clashes	Electron density
2	NAD	D	401	-	-	-	X



## 2 Entry composition

There are 5 unique types of molecules in this entry. The entry contains 9607 atoms, of which 0 are hydrogens and 0 are deuteriums.

In the tables below, the ZeroOcc column contains the number of atoms modelled with zero occupancy, the AltConf column contains the number of residues with at least one atom in alternate conformation and the Trace column contains the number of residues modelled with at most 2 atoms.

- Molecule 1 is a protein called 3-hydroxyisobutyrate dehydrogenase.

Mol	Chain	Residues	Atoms					ZeroOcc	AltConf	Trace
1	A	291	Total	C	N	O	S	0	1	0
			2208	1411	351	436	10			
1	B	294	Total	C	N	O	S	0	2	0
			2243	1433	361	440	9			
1	C	289	Total	C	N	O	S	0	1	0
			2181	1396	347	429	9			
1	D	292	Total	C	N	O	S	0	2	0
			2211	1417	353	432	9			

There are 24 discrepancies between the modelled and reference sequences:

Chain	Residue	Modelled	Actual	Comment	Reference
A	-5	GLY	-	expression tag	UNP Q81DR6
A	-4	SER	-	expression tag	UNP Q81DR6
A	-3	ALA	-	expression tag	UNP Q81DR6
A	-2	LYS	-	expression tag	UNP Q81DR6
A	-1	ASP	-	expression tag	UNP Q81DR6
A	0	PRO	-	expression tag	UNP Q81DR6
B	-5	GLY	-	expression tag	UNP Q81DR6
B	-4	SER	-	expression tag	UNP Q81DR6
B	-3	ALA	-	expression tag	UNP Q81DR6
B	-2	LYS	-	expression tag	UNP Q81DR6
B	-1	ASP	-	expression tag	UNP Q81DR6
B	0	PRO	-	expression tag	UNP Q81DR6
C	-5	GLY	-	expression tag	UNP Q81DR6
C	-4	SER	-	expression tag	UNP Q81DR6
C	-3	ALA	-	expression tag	UNP Q81DR6
C	-2	LYS	-	expression tag	UNP Q81DR6
C	-1	ASP	-	expression tag	UNP Q81DR6
C	0	PRO	-	expression tag	UNP Q81DR6
D	-5	GLY	-	expression tag	UNP Q81DR6
D	-4	SER	-	expression tag	UNP Q81DR6
D	-3	ALA	-	expression tag	UNP Q81DR6

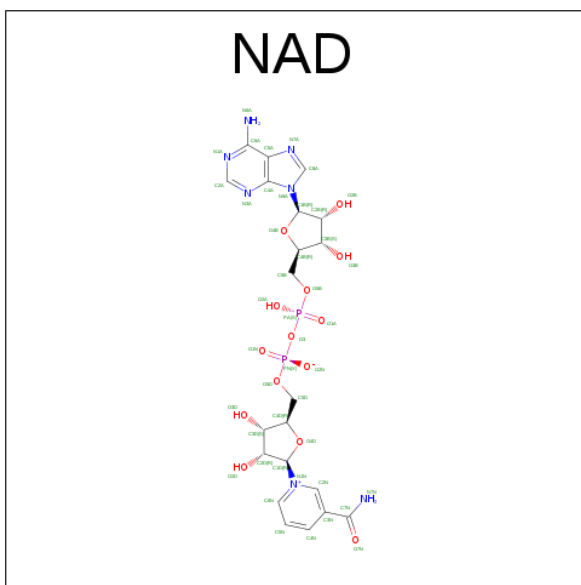
*Continued on next page...*



*Continued from previous page...*

Chain	Residue	Modelled	Actual	Comment	Reference
D	-2	LYS	-	expression tag	UNP Q81DR6
D	-1	ASP	-	expression tag	UNP Q81DR6
D	0	PRO	-	expression tag	UNP Q81DR6

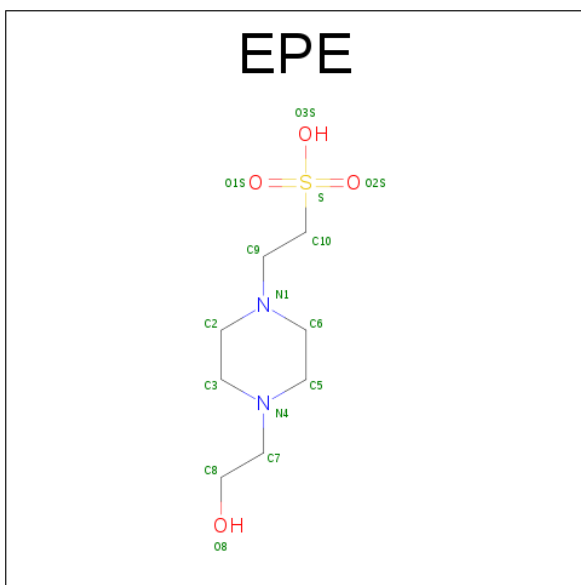
- Molecule 2 is NICOTINAMIDE-ADENINE-DINUCLEOTIDE (three-letter code: NAD) (formula: C<sub>21</sub>H<sub>27</sub>N<sub>7</sub>O<sub>14</sub>P<sub>2</sub>).



Mol	Chain	Residues	Atoms					ZeroOcc	AltConf
2	A	1	Total	C	N	O	P	0	0
			44	21	7	14	2		
2	B	1	Total	C	N	O	P	0	0
			44	21	7	14	2		
2	C	1	Total	C	N	O	P	0	0
			44	21	7	14	2		
2	D	1	Total	C	N	O	P	0	0
			44	21	7	14	2		

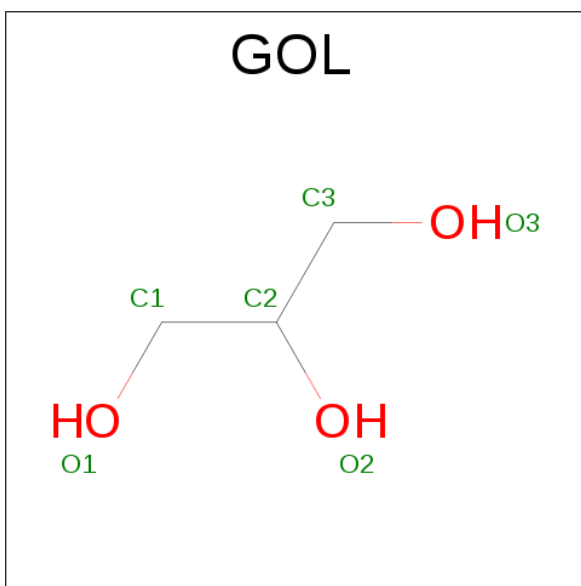
- Molecule 3 is 4-(2-HYDROXYETHYL)-1-PIPERAZINE ETHANESULFONIC ACID (three-letter code: EPE) (formula: C<sub>8</sub>H<sub>18</sub>N<sub>2</sub>O<sub>4</sub>S).





Mol	Chain	Residues	Atoms					ZeroOcc	AltConf
3	A	1	Total	C	N	O	S	0	0
			15	8	2	4	1		

- Molecule 4 is GLYCEROL (three-letter code: GOL) (formula:  $C_3H_8O_3$ ).



Mol	Chain	Residues	Atoms			ZeroOcc	AltConf
4	B	1	Total	C	O	0	0
			6	3	3		
4	D	1	Total	C	O	0	0
			6	3	3		

- Molecule 5 is water.



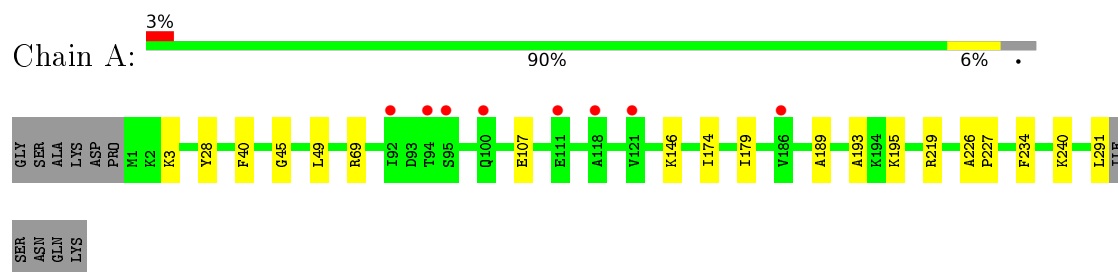
Mol	Chain	Residues	Atoms		ZeroOcc	AltConf
5	A	176	Total 176	O 176	0	0
5	B	200	Total 200	O 200	0	0
5	C	69	Total 69	O 69	0	0
5	D	116	Total 116	O 116	0	0



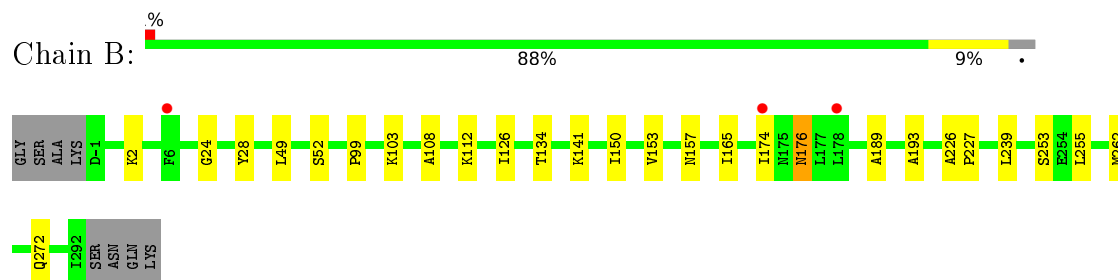
### 3 Residue-property plots [i](#)

These plots are drawn for all protein, RNA and DNA chains in the entry. The first graphic for a chain summarises the proportions of errors displayed in the second graphic. The second graphic shows the sequence view annotated by issues in geometry and electron density. Residues are color-coded according to the number of geometric quality criteria for which they contain at least one outlier: green = 0, yellow = 1, orange = 2 and red = 3 or more. A red dot above a residue indicates a poor fit to the electron density ( $RSRZ > 2$ ). Stretches of 2 or more consecutive residues without any outlier are shown as a green connector. Residues present in the sample, but not in the model, are shown in grey.

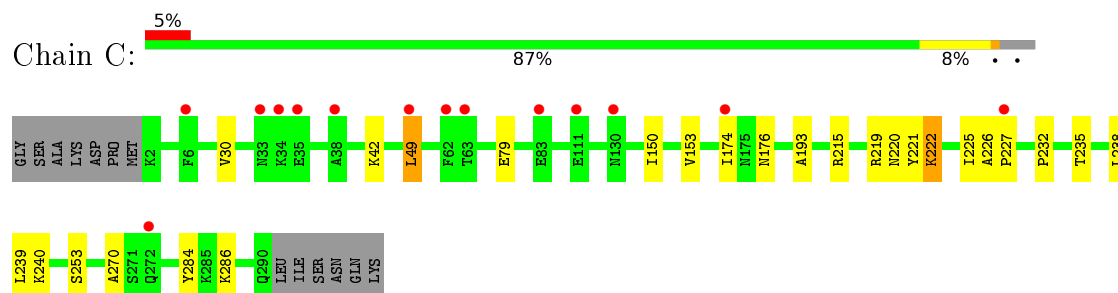
- Molecule 1: 3-hydroxyisobutyrate dehydrogenase



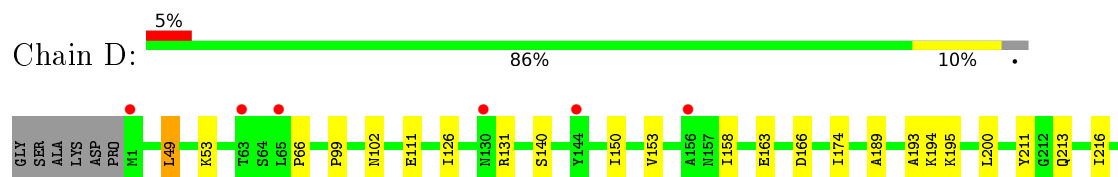
- Molecule 1: 3-hydroxyisobutyrate dehydrogenase



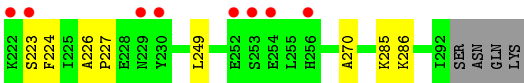
- Molecule 1: 3-hydroxyisobutyrate dehydrogenase



- Molecule 1: 3-hydroxyisobutyrate dehydrogenase









## 4 Data and refinement statistics

Property	Value	Source
Space group	P 21 21 21	Depositor
Cell constants a, b, c, $\alpha$ , $\beta$ , $\gamma$	46.44Å 158.58Å 163.14Å 90.00° 90.00° 90.00°	Depositor
Resolution (Å)	30.00 – 2.10 29.65 – 2.09	Depositor EDS
% Data completeness (in resolution range)	99.7 (30.00-2.10) 98.8 (29.65-2.09)	Depositor EDS
$R_{merge}$	0.08	Depositor
$R_{sym}$	(Not available)	Depositor
$\langle I/\sigma(I) \rangle$ <sup>1</sup>	5.46 (at 2.08Å)	Xtriage
Refinement program	REFMAC 5.5.0109	Depositor
R, $R_{free}$	0.197 , 0.243 0.198 , 0.240	Depositor DCC
$R_{free}$ test set	3586 reflections (5.30%)	DCC
Wilson B-factor (Å <sup>2</sup> )	28.6	Xtriage
Anisotropy	0.405	Xtriage
Bulk solvent $k_{sol}$ (e/Å <sup>3</sup> ), $B_{sol}$ (Å <sup>2</sup> )	0.36 , 44.3	EDS
L-test for twinning <sup>2</sup>	$\langle  L  \rangle = 0.50$ , $\langle L^2 \rangle = 0.33$	Xtriage
Estimated twinning fraction	0.008 for -h,l,k	Xtriage
$F_o, F_c$ correlation	0.95	EDS
Total number of atoms	9607	wwPDB-VP
Average B, all atoms (Å <sup>2</sup> )	35.0	wwPDB-VP

Xtriage's analysis on translational NCS is as follows: *The largest off-origin peak in the Patterson function is 3.80% of the height of the origin peak. No significant pseudotranslation is detected.*

<sup>1</sup>Intensities estimated from amplitudes.

<sup>2</sup>Theoretical values of  $\langle |L| \rangle$ ,  $\langle L^2 \rangle$  for acentric reflections are 0.5, 0.375 respectively for untwinned datasets, and 0.333, 0.2 for perfectly twinned datasets.



## 5 Model quality [i](#)

### 5.1 Standard geometry [i](#)

Bond lengths and bond angles in the following residue types are not validated in this section: GOL, EPE, NAD

The Z score for a bond length (or angle) is the number of standard deviations the observed value is removed from the expected value. A bond length (or angle) with  $|Z| > 5$  is considered an outlier worth inspection. RMSZ is the root-mean-square of all Z scores of the bond lengths (or angles).

Mol	Chain	Bond lengths		Bond angles	
		RMSZ	$\# Z  > 5$	RMSZ	$\# Z  > 5$
1	A	0.73	0/2247	0.68	0/3036
1	B	0.77	0/2286	0.70	0/3087
1	C	0.58	0/2220	0.64	0/3000
1	D	0.79	0/2253	0.69	0/3044
All	All	0.72	0/9006	0.68	0/12167

There are no bond length outliers.

There are no bond angle outliers.

There are no chirality outliers.

There are no planarity outliers.

### 5.2 Too-close contacts [i](#)

In the following table, the Non-H and H(model) columns list the number of non-hydrogen atoms and hydrogen atoms in the chain respectively. The H(added) column lists the number of hydrogen atoms added and optimized by MolProbity. The Clashes column lists the number of clashes within the asymmetric unit, whereas Symm-Clashes lists symmetry related clashes.

Mol	Chain	Non-H	H(model)	H(added)	Clashes	Symm-Clashes
1	A	2208	0	2192	20	0
1	B	2243	0	2242	21	0
1	C	2181	0	2164	25	0
1	D	2211	0	2194	28	0
2	A	44	0	26	0	0
2	B	44	0	26	0	0
2	C	44	0	26	1	0
2	D	44	0	26	0	0
3	A	15	0	17	4	0

*Continued on next page...*



*Continued from previous page...*

Mol	Chain	Non-H	H(model)	H(added)	Clashes	Symm-Clashes
4	B	6	0	8	0	0
4	D	6	0	8	0	0
5	A	176	0	0	2	0
5	B	200	0	0	3	0
5	C	69	0	0	0	0
5	D	116	0	0	0	0
All	All	9607	0	8929	73	0

The all-atom clashscore is defined as the number of clashes found per 1000 atoms (including hydrogen atoms). The all-atom clashscore for this structure is 4.

All (73) close contacts within the same asymmetric unit are listed below, sorted by their clash magnitude.

Atom-1	Atom-2	Interatomic distance (Å)	Clash overlap (Å)
1:A:219:ARG:HH21	3:A:402:EPE:H81	1.35	0.87
1:C:174[B]:ILE:HD13	1:D:193:ALA:HB2	1.68	0.75
1:A:193:ALA:HB2	1:B:174[B]:ILE:HD13	1.69	0.74
1:A:195:LYS:HD3	1:A:291:LEU:HD22	1.74	0.69
1:D:194:LYS:HD3	1:D:200:LEU:HD11	1.74	0.69
1:A:219:ARG:NH2	3:A:402:EPE:H81	2.07	0.68
1:A:291:LEU:CD2	1:B:255:LEU:HD21	2.30	0.62
1:D:226:ALA:HB3	1:D:227:PRO:CD	2.30	0.62
1:C:220:ASN:O	1:C:225:ILE:HG13	2.01	0.61
1:C:215:ARG:HD3	1:D:213:GLN:HB3	1.85	0.59
1:A:189:ALA:HB1	1:B:174[A]:ILE:HG23	1.85	0.59
1:B:2:LYS:HE3	1:B:24:GLY:O	2.05	0.56
1:C:174[B]:ILE:CD1	1:D:193:ALA:HB2	2.36	0.55
1:C:270:ALA:HA	1:C:286:LYS:HD2	1.89	0.55
1:A:28:TYR:CD2	1:A:49:LEU:HD22	2.41	0.55
1:A:291:LEU:HD23	1:B:255:LEU:HD21	1.88	0.54
1:B:126:ILE:HD12	5:B:659:HOH:O	2.08	0.54
1:A:234:PHE:HB2	3:A:402:EPE:H52	1.90	0.53
1:A:3:LYS:NZ	5:A:503:HOH:O	2.40	0.53
1:C:222:LYS:O	1:C:227:PRO:HD3	2.10	0.52
1:A:146:LYS:NZ	5:A:506:HOH:O	2.43	0.51
1:C:253:SER:O	1:D:195:LYS:CE	2.58	0.51
1:C:174[A]:ILE:HG23	1:D:189:ALA:HB1	1.93	0.51
1:D:166:ASP:OD1	1:D:166:ASP:N	2.42	0.50
1:C:193:ALA:HB2	1:D:174[B]:ILE:HD13	1.93	0.50
1:C:222:LYS:O	1:C:227:PRO:CD	2.59	0.50
1:A:193:ALA:HB2	1:B:174[B]:ILE:CD1	2.41	0.50

*Continued on next page...*



*Continued from previous page...*

Atom-1	Atom-2	Interatomic distance (Å)	Clash overlap (Å)
1:A:189:ALA:HB1	1:B:174[B]:ILE:HG23	1.93	0.50
1:C:221:TYR:HA	1:C:225:ILE:HG13	1.93	0.50
1:A:174[B]:ILE:HD13	1:B:193:ALA:HB2	1.94	0.50
1:C:253:SER:O	1:D:195:LYS:HE2	2.12	0.49
1:C:30:VAL:HG22	1:C:49:LEU:O	2.12	0.49
1:A:40:PHE:CZ	1:A:45:GLY:HA3	2.47	0.48
1:B:176:ASN:HD22	1:B:239:LEU:HD12	1.77	0.48
1:D:150:ILE:O	1:D:153:VAL:HG22	2.13	0.48
1:D:270:ALA:HA	1:D:286:LYS:HD2	1.96	0.48
1:D:249:LEU:O	1:D:249:LEU:HG	2.14	0.48
1:A:174[A]:ILE:HG23	1:B:189:ALA:HB1	1.95	0.47
1:A:179:ILE:HD13	3:A:402:EPE:H91	1.96	0.47
1:C:225:ILE:HG23	1:C:284:TYR:CD2	2.50	0.47
1:C:150:ILE:O	1:C:153:VAL:HG22	2.15	0.47
1:A:226:ALA:HB3	1:A:227:PRO:HD3	1.97	0.46
1:B:52:SER:HB2	5:B:561:HOH:O	2.14	0.46
1:B:226:ALA:HB3	1:B:227:PRO:HD3	1.98	0.46
1:B:150:ILE:O	1:B:153:VAL:HG22	2.16	0.45
1:C:219:ARG:HD2	1:D:211:TYR:CE1	2.51	0.45
1:B:272:GLN:NE2	1:D:66:PRO:O	2.40	0.45
1:A:174[B]:ILE:HG23	1:B:189:ALA:HB1	1.98	0.45
1:B:28:TYR:CD2	1:B:49:LEU:HD22	2.52	0.45
1:C:219:ARG:HD2	1:D:211:TYR:CZ	2.51	0.45
1:C:174[B]:ILE:HG23	1:D:189:ALA:HB1	1.98	0.44
1:D:216:ILE:HA	1:D:216:ILE:HD13	1.80	0.44
1:B:134:THR:HA	1:B:157:ASN:O	2.18	0.43
1:D:131:ARG:HD3	1:D:153:VAL:O	2.19	0.43
1:B:108:ALA:O	1:B:112:LYS:HG2	2.18	0.43
1:C:225:ILE:HG23	1:C:284:TYR:CE2	2.54	0.42
1:C:253:SER:HB3	1:D:195:LYS:HG2	2.02	0.42
1:D:226:ALA:HB3	1:D:227:PRO:HD2	2.02	0.42
1:D:99:PRO:O	1:D:102:ASN:HB2	2.19	0.42
1:D:140:SER:HA	1:D:163:GLU:OE2	2.20	0.42
1:D:158:ILE:HD13	1:D:158:ILE:N	2.35	0.41
1:D:223:SER:HB2	1:D:224:PHE:CD1	2.55	0.41
1:C:238:LEU:HD11	2:C:401:NAD:C7N	2.51	0.41
1:C:225:ILE:HD13	1:C:284:TYR:CD2	2.56	0.41
1:C:176:ASN:HD21	1:C:239:LEU:HD12	1.86	0.41
1:B:141:LYS:NZ	5:B:504:HOH:O	2.36	0.41
1:C:226:ALA:HB3	1:C:227:PRO:HD3	2.03	0.41
1:D:49:LEU:HA	1:D:49:LEU:HD12	1.92	0.41

*Continued on next page...*



*Continued from previous page...*

Atom-1	Atom-2	Interatomic distance (Å)	Clash overlap (Å)
1:C:232:PRO:HB3	1:C:235:THR:HG22	2.03	0.41
1:A:40:PHE:CE2	1:A:45:GLY:HA3	2.57	0.40
1:D:226:ALA:HB3	1:D:227:PRO:HD3	2.01	0.40
1:D:126:ILE:HD12	1:D:126:ILE:HA	1.87	0.40
1:B:103:LYS:HA	1:B:165:ILE:HG21	2.03	0.40

There are no symmetry-related clashes.

## 5.3 Torsion angles [i](#)

### 5.3.1 Protein backbone [i](#)

In the following table, the Percentiles column shows the percent Ramachandran outliers of the chain as a percentile score with respect to all X-ray entries followed by that with respect to entries of similar resolution.

The Analysed column shows the number of residues for which the backbone conformation was analysed, and the total number of residues.

Mol	Chain	Analysed	Favoured	Allowed	Outliers	Percentiles	
1	A	290/302 (96%)	285 (98%)	5 (2%)	0	100	100
1	B	294/302 (97%)	289 (98%)	5 (2%)	0	100	100
1	C	288/302 (95%)	279 (97%)	9 (3%)	0	100	100
1	D	292/302 (97%)	286 (98%)	6 (2%)	0	100	100
All	All	1164/1208 (96%)	1139 (98%)	25 (2%)	0	100	100

There are no Ramachandran outliers to report.

### 5.3.2 Protein sidechains [i](#)

In the following table, the Percentiles column shows the percent sidechain outliers of the chain as a percentile score with respect to all X-ray entries followed by that with respect to entries of similar resolution.

The Analysed column shows the number of residues for which the sidechain conformation was analysed, and the total number of residues.

Mol	Chain	Analysed	Rotameric	Outliers	Percentiles	
1	A	237/251 (94%)	234 (99%)	3 (1%)	76	82

*Continued on next page...*



*Continued from previous page...*

Mol	Chain	Analysed	Rotameric	Outliers	Percentiles	
1	B	242/251 (96%)	238 (98%)	4 (2%)	68	74
1	C	233/251 (93%)	228 (98%)	5 (2%)	61	66
1	D	233/251 (93%)	229 (98%)	4 (2%)	68	74
All	All	945/1004 (94%)	929 (98%)	16 (2%)	68	74

All (16) residues with a non-rotameric sidechain are listed below:

Mol	Chain	Res	Type
1	A	69	ARG
1	A	107	GLU
1	A	240	LYS
1	B	99	PRO
1	B	176	ASN
1	B	253	SER
1	B	262	MET
1	C	42	LYS
1	C	49	LEU
1	C	79	GLU
1	C	222	LYS
1	C	240	LYS
1	D	49	LEU
1	D	53	LYS
1	D	111	GLU
1	D	285	LYS

Some sidechains can be flipped to improve hydrogen bonding and reduce clashes. All (5) such sidechains are listed below:

Mol	Chain	Res	Type
1	A	88	ASN
1	B	102	ASN
1	B	176	ASN
1	C	176	ASN
1	D	102	ASN

### 5.3.3 RNA ⓘ

There are no RNA molecules in this entry.



## 5.4 Non-standard residues in protein, DNA, RNA chains ⓘ

There are no non-standard protein/DNA/RNA residues in this entry.

## 5.5 Carbohydrates ⓘ

There are no carbohydrates in this entry.

## 5.6 Ligand geometry ⓘ

7 ligands are modelled in this entry.

In the following table, the Counts columns list the number of bonds (or angles) for which Mogul statistics could be retrieved, the number of bonds (or angles) that are observed in the model and the number of bonds (or angles) that are defined in the chemical component dictionary. The Link column lists molecule types, if any, to which the group is linked. The Z score for a bond length (or angle) is the number of standard deviations the observed value is removed from the expected value. A bond length (or angle) with  $|Z| > 2$  is considered an outlier worth inspection. RMSZ is the root-mean-square of all Z scores of the bond lengths (or angles).

Mol	Type	Chain	Res	Link	Bond lengths			Bond angles		
					Counts	RMSZ	$\# Z  > 2$	Counts	RMSZ	$\# Z  > 2$
2	NAD	A	401	-	42,48,48	0.96	2 (4%)	46,73,73	1.51	7 (15%)
3	EPE	A	402	-	15,15,15	1.10	1 (6%)	19,20,20	1.80	5 (26%)
2	NAD	B	401	-	42,48,48	0.96	2 (4%)	46,73,73	1.66	4 (8%)
4	GOL	B	402	-	5,5,5	0.68	0	5,5,5	0.68	0
2	NAD	C	401	-	42,48,48	0.94	3 (7%)	46,73,73	1.90	7 (15%)
2	NAD	D	401	-	42,48,48	0.79	1 (2%)	46,73,73	1.85	5 (10%)
4	GOL	D	402	-	5,5,5	0.67	0	5,5,5	0.36	0

In the following table, the Chirals column lists the number of chiral outliers, the number of chiral centers analysed, the number of these observed in the model and the number defined in the chemical component dictionary. Similar counts are reported in the Torsion and Rings columns. '-' means no outliers of that kind were identified.

Mol	Type	Chain	Res	Link	Chirals	Torsions	Rings
2	NAD	A	401	-	-	0/22/62/62	0/5/5/5
3	EPE	A	402	-	-	0/9/19/19	0/1/1/1
2	NAD	B	401	-	-	0/22/62/62	0/5/5/5
4	GOL	B	402	-	-	0/4/4/4	0/0/0/0
2	NAD	C	401	-	-	0/22/62/62	0/5/5/5
2	NAD	D	401	-	-	0/22/62/62	0/5/5/5
4	GOL	D	402	-	-	0/4/4/4	0/0/0/0



All (9) bond length outliers are listed below:

Mol	Chain	Res	Type	Atoms	Z	Observed(Å)	Ideal(Å)
2	C	401	NAD	C2B-C1B	-2.44	1.49	1.53
2	A	401	NAD	PN-O2N	-2.16	1.45	1.55
2	B	401	NAD	C2A-N3A	2.00	1.35	1.32
2	A	401	NAD	C5A-C4A	2.04	1.45	1.40
2	C	401	NAD	C5A-C4A	2.28	1.45	1.40
2	D	401	NAD	C5A-C4A	2.49	1.46	1.40
2	C	401	NAD	O4D-C1D	2.68	1.45	1.41
2	B	401	NAD	C5A-C4A	2.97	1.47	1.40
3	A	402	EPE	C10-S	3.38	1.82	1.77

All (28) bond angle outliers are listed below:

Mol	Chain	Res	Type	Atoms	Z	Observed(°)	Ideal(°)
2	C	401	NAD	N3A-C2A-N1A	-8.43	122.25	128.87
2	D	401	NAD	N3A-C2A-N1A	-7.80	122.75	128.87
2	B	401	NAD	N3A-C2A-N1A	-6.90	123.45	128.87
2	A	401	NAD	N3A-C2A-N1A	-6.61	123.68	128.87
2	C	401	NAD	C1B-N9A-C4A	-5.41	120.77	126.81
2	D	401	NAD	C1B-N9A-C4A	-4.96	121.27	126.81
2	B	401	NAD	C1B-N9A-C4A	-3.58	122.81	126.81
2	A	401	NAD	C1B-N9A-C4A	-3.46	122.94	126.81
2	D	401	NAD	O7N-C7N-C3N	-2.42	116.92	119.60
2	A	401	NAD	O7N-C7N-C3N	-2.26	117.09	119.60
2	C	401	NAD	C5N-C4N-C3N	-2.02	117.94	120.35
2	B	401	NAD	O2A-PA-O3	2.01	113.88	105.27
2	C	401	NAD	C2A-N1A-C6A	2.23	122.75	118.77
3	A	402	EPE	C2-C3-N4	2.28	115.09	110.65
2	A	401	NAD	O2A-PA-O1A	2.28	124.41	112.56
2	D	401	NAD	O2A-PA-O3	2.42	115.64	105.27
2	C	401	NAD	C2D-C1D-N1N	2.42	118.28	113.53
2	A	401	NAD	O2N-PN-O3	2.43	115.70	105.27
2	C	401	NAD	C4D-O4D-C1D	2.44	112.23	109.64
3	A	402	EPE	O1S-S-C10	2.48	108.62	106.87
3	A	402	EPE	C6-C5-N4	2.73	115.98	110.65
3	A	402	EPE	O3S-S-C10	2.77	110.75	104.99
2	A	401	NAD	O4D-C1D-N1N	2.80	111.12	108.10
2	C	401	NAD	C3N-C7N-N7N	2.88	121.08	117.82
2	A	401	NAD	C3N-C7N-N7N	2.91	121.11	117.82
2	B	401	NAD	C3N-C7N-N7N	3.86	122.18	117.82
2	D	401	NAD	C3N-C7N-N7N	4.29	122.68	117.82
3	A	402	EPE	C5-N4-C3	4.72	119.43	108.87



There are no chirality outliers.

There are no torsion outliers.

There are no ring outliers.

2 monomers are involved in 5 short contacts:

Mol	Chain	Res	Type	Clashes	Symm-Clashes
3	A	402	EPE	4	0
2	C	401	NAD	1	0

## 5.7 Other polymers [i](#)

There are no such residues in this entry.

## 5.8 Polymer linkage issues [i](#)

There are no chain breaks in this entry.



## 6 Fit of model and data ⓘ

### 6.1 Protein, DNA and RNA chains ⓘ

In the following table, the column labelled ‘#RSRZ> 2’ contains the number (and percentage) of RSRZ outliers, followed by percent RSRZ outliers for the chain as percentile scores relative to all X-ray entries and entries of similar resolution. The OWAB column contains the minimum, median, 95<sup>th</sup> percentile and maximum values of the occupancy-weighted average B-factor per residue. The column labelled ‘Q< 0.9’ lists the number of (and percentage) of residues with an average occupancy less than 0.9.

Mol	Chain	Analysed	<RSRZ>	#RSRZ>2	OWAB(Å <sup>2</sup> )	Q<0.9
1	A	291/302 (96%)	0.04	8 (2%) 58 65	18, 29, 44, 51	0
1	B	294/302 (97%)	-0.12	3 (1%) 84 87	18, 27, 39, 53	0
1	C	289/302 (95%)	0.34	14 (4%) 34 43	24, 45, 80, 104	0
1	D	292/302 (96%)	0.22	14 (4%) 34 43	16, 35, 62, 73	0
All	All	1166/1208 (96%)	0.12	39 (3%) 50 59	16, 32, 62, 104	0

All (39) RSRZ outliers are listed below:

Mol	Chain	Res	Type	RSRZ
1	D	223	SER	4.3
1	D	253	SER	3.4
1	C	227	PRO	3.2
1	D	252	GLU	3.1
1	D	1	MET	2.9
1	C	35	GLU	2.9
1	D	229	ASN	2.7
1	A	94	THR	2.7
1	A	92	ILE	2.7
1	C	174[A]	ILE	2.7
1	A	121	VAL	2.7
1	C	33	ASN	2.7
1	C	272	GLN	2.6
1	C	34	LYS	2.5
1	B	174[A]	ILE	2.5
1	C	111	GLU	2.5
1	C	83	GLU	2.5
1	D	144	TYR	2.4
1	C	49	LEU	2.4
1	C	130	ASN	2.4
1	D	254	GLU	2.3

*Continued on next page...*



*Continued from previous page...*

Mol	Chain	Res	Type	RSRZ
1	D	65	LEU	2.3
1	A	118	ALA	2.3
1	A	100	GLN	2.3
1	D	256	HIS	2.3
1	A	95	SER	2.3
1	D	222	LYS	2.3
1	D	230	TYR	2.2
1	B	6	PHE	2.2
1	D	63	THR	2.2
1	C	63	THR	2.2
1	B	178	LEU	2.1
1	C	6	PHE	2.1
1	D	156	ALA	2.1
1	D	130	ASN	2.1
1	C	62	PHE	2.1
1	A	186	VAL	2.1
1	A	111	GLU	2.1
1	C	38	ALA	2.0

## 6.2 Non-standard residues in protein, DNA, RNA chains [i](#)

There are no non-standard protein/DNA/RNA residues in this entry.

## 6.3 Carbohydrates [i](#)

There are no carbohydrates in this entry.

## 6.4 Ligands [i](#)

In the following table, the Atoms column lists the number of modelled atoms in the group and the number defined in the chemical component dictionary. LLDF column lists the quality of electron density of the group with respect to its neighbouring residues in protein, DNA or RNA chains. The B-factors column lists the minimum, median, 95<sup>th</sup> percentile and maximum values of B factors of atoms in the group. The column labelled 'Q< 0.9' lists the number of atoms with occupancy less than 0.9.

Mol	Type	Chain	Res	Atoms	RSCC	RSR	LLDF	B-factors(Å <sup>2</sup> )	Q<0.9
2	NAD	D	401	44/44	0.82	0.51	8.07	16,28,33,34	44
3	EPE	A	402	15/15	0.91	0.17	0.43	32,36,42,43	0
4	GOL	D	402	6/6	0.96	0.10	0.34	24,28,31,33	0

*Continued on next page...*



*Continued from previous page...*

Mol	Type	Chain	Res	Atoms	RSCC	RSR	LLDF	B-factors( $\text{\AA}^2$ )	Q<0.9
4	GOL	B	402	6/6	0.94	0.09	-0.21	30,30,33,36	0
2	NAD	B	401	44/44	0.91	0.13	-0.21	29,36,42,42	0
2	NAD	C	401	44/44	0.93	0.12	-0.52	41,46,52,55	0
2	NAD	A	401	44/44	0.96	0.10	-0.82	21,24,26,29	0

## 6.5 Other polymers [i](#)

There are no such residues in this entry.