



Full wwPDB X-ray Structure Validation Report ⓘ

Feb 1, 2016 – 05:49 PM GMT

PDB ID : 4JLT
Title : Crystal structure of P450 2B4(H226Y) in complex with paroxetine
Authors : Shah, M.B.; Pascual, J.; Stout, C.D.; Halpert, J.R.
Deposited on : 2013-03-13
Resolution : 2.14 Å(reported)

This is a Full wwPDB X-ray Structure Validation Report for a publicly released PDB entry.
We welcome your comments at validation@mail.wwpdb.org
A user guide is available at
<http://wwpdb.org/validation/2016/XrayValidationReportHelp>
with specific help available everywhere you see the ⓘ symbol.

The following versions of software and data (see [references ⓘ](#)) were used in the production of this report:

MolProbity : 4.02b-467
Mogul : 1.7 (RC4), CSD as536be (2015)
Xtriage (Phenix) : 1.9-1692
EDS : rb-20026688
Percentile statistics : 20151230.v01 (using entries in the PDB archive December 30th 2015)
Refmac : 5.8.0135
CCP4 : 6.5.0
Ideal geometry (proteins) : Engh & Huber (2001)
Ideal geometry (DNA, RNA) : Parkinson et al. (1996)
Validation Pipeline (wwPDB-VP) : trunk26865

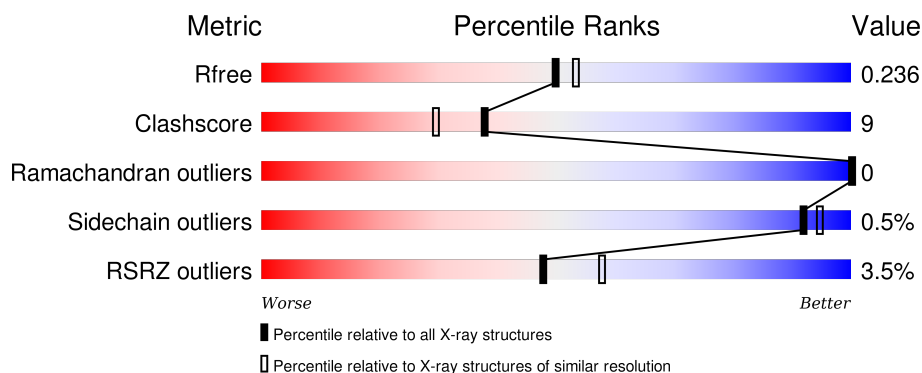
1 Overall quality at a glance

The following experimental techniques were used to determine the structure:

X-RAY DIFFRACTION

The reported resolution of this entry is 2.14 Å.

Percentile scores (ranging between 0-100) for global validation metrics of the entry are shown in the following graphic. The table shows the number of entries on which the scores are based.



Metric	Whole archive (#Entries)	Similar resolution (#Entries, resolution range(Å))
R_{free}	91344	1693 (2.16-2.12)
Clashscore	102246	1824 (2.16-2.12)
Ramachandran outliers	100387	1798 (2.16-2.12)
Sidechain outliers	100360	1798 (2.16-2.12)
RSRZ outliers	91569	1699 (2.16-2.12)

The table below summarises the geometric issues observed across the polymeric chains and their fit to the electron density. The red, orange, yellow and green segments on the lower bar indicate the fraction of residues that contain outliers for ≥ 3 , 2, 1 and 0 types of geometric quality criteria. A grey segment represents the fraction of residues that are not modelled. The numeric value for each fraction is indicated below the corresponding segment, with a dot representing fractions $\leq 5\%$. The upper red bar (where present) indicates the fraction of residues that have poor fit to the electron density. The numeric value is given above the bar.

Mol	Chain	Length	Quality of chain
1	A	476	<div> <div>3%</div> <div>84%</div> <div>12%</div> <div>.</div> </div>

The following table lists non-polymeric compounds, carbohydrate monomers and non-standard residues in protein, DNA, RNA chains that are outliers for geometric or electron-density-fit criteria:

Mol	Type	Chain	Res	Chirality	Geometry	Clashes	Electron density
3	CM5	A	502	-	-	-	X

Continued on next page...

Continued from previous page...

Mol	Type	Chain	Res	Chirality	Geometry	Clashes	Electron density
3	CM5	A	503	-	-	-	X
5	SO4	A	509	-	X	-	-
6	GOL	A	510	-	-	X	X
7	PO4	A	512	-	-	-	X

2 Entry composition

There are 8 unique types of molecules in this entry. The entry contains 4056 atoms, of which 0 are hydrogens and 0 are deuteriums.

In the tables below, the ZeroOcc column contains the number of atoms modelled with zero occupancy, the AltConf column contains the number of residues with at least one atom in alternate conformation and the Trace column contains the number of residues modelled with at most 2 atoms.

- Molecule 1 is a protein called Cytochrome P450 2B4.

Mol	Chain	Residues	Atoms					ZeroOcc	AltConf	Trace
			Total	C	N	O	S			
1	A	458	3654	2360	624	660	10	0	0	0

There are 33 discrepancies between the modelled and reference sequences:

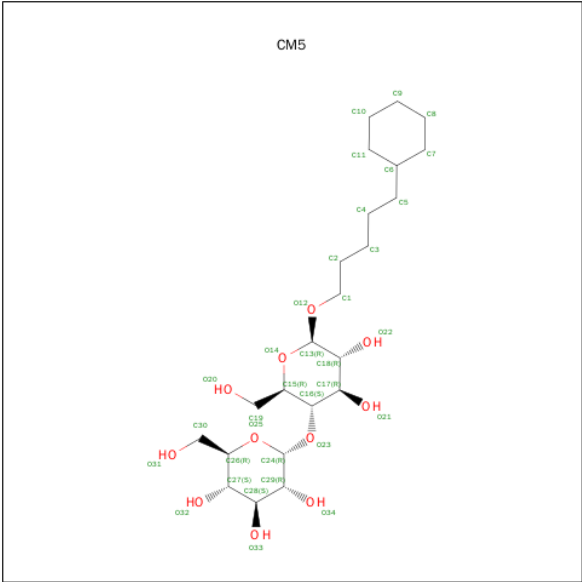
Chain	Residue	Modelled	Actual	Comment	Reference
A	2	ALA	GLU	ENGINEERED MUTATION	UNP P00178
A	?	-	PHE	DELETION	UNP P00178
A	?	-	SER	DELETION	UNP P00178
A	?	-	LEU	DELETION	UNP P00178
A	?	-	LEU	DELETION	UNP P00178
A	?	-	LEU	DELETION	UNP P00178
A	?	-	LEU	DELETION	UNP P00178
A	?	-	LEU	DELETION	UNP P00178
A	?	-	ALA	DELETION	UNP P00178
A	?	-	PHE	DELETION	UNP P00178
A	?	-	LEU	DELETION	UNP P00178
A	?	-	ALA	DELETION	UNP P00178
A	?	-	GLY	DELETION	UNP P00178
A	?	-	LEU	DELETION	UNP P00178
A	?	-	LEU	DELETION	UNP P00178
A	?	-	LEU	DELETION	UNP P00178
A	?	-	LEU	DELETION	UNP P00178
A	?	-	LEU	DELETION	UNP P00178
A	?	-	PHE	DELETION	UNP P00178
A	?	-	ARG	DELETION	UNP P00178
A	22	LYS	GLY	ENGINEERED MUTATION	UNP P00178
A	23	LYS	HIS	ENGINEERED MUTATION	UNP P00178
A	24	THR	PRO	ENGINEERED MUTATION	UNP P00178
A	25	SER	LYS	ENGINEERED MUTATION	UNP P00178
A	26	SER	ALA	ENGINEERED MUTATION	UNP P00178
A	27	LYS	HIS	ENGINEERED MUTATION	UNP P00178
A	29	LYS	ARG	ENGINEERED MUTATION	UNP P00178

Continued on next page...

Chain	Residue	Modelled	Actual	Comment	Reference
A	221	SER	PRO	SEE REMARK 999	UNP P00178
A	226	TYR	HIS	ENGINEERED MUTATION	UNP P00178
A	492	HIS	-	EXPRESSION TAG	UNP P00178
A	493	HIS	-	EXPRESSION TAG	UNP P00178
A	494	HIS	-	EXPRESSION TAG	UNP P00178
A	495	HIS	-	EXPRESSION TAG	UNP P00178

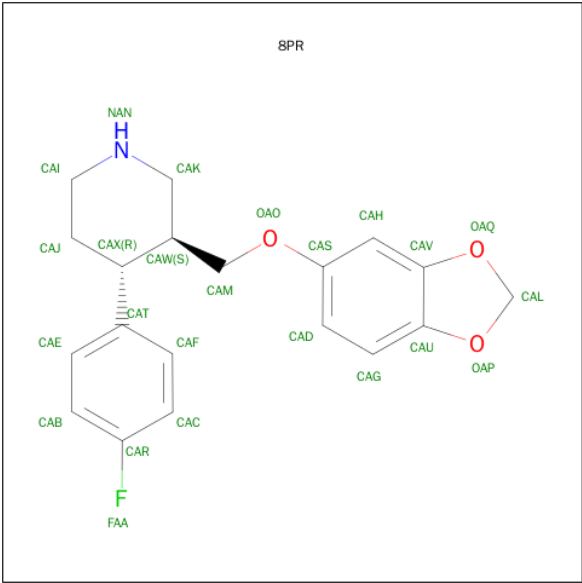
-
- Chemical structure of HEM (Heme) showing a central iron atom coordinated by four nitrogen atoms in a porphyrin-like ring, with various side chains and a central heme group.

- Molecule 3 is 5-CYCLOHEXYL-1-PENTYL-BETA-D-MALTOSE (three-letter code: CM5) (formula: $C_{23}H_{42}O_{11}$).



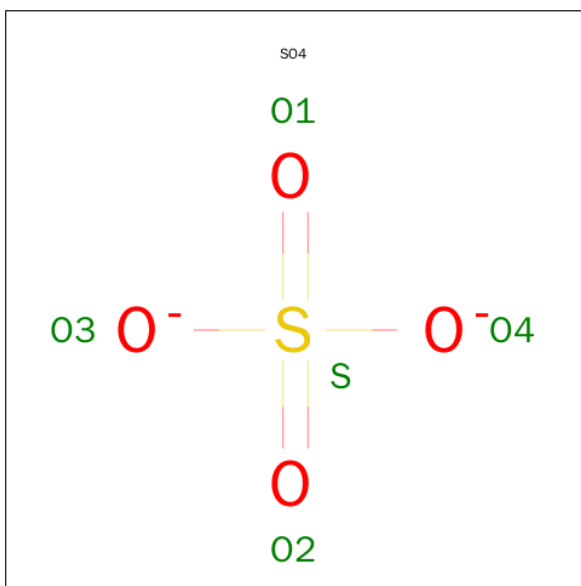
Mol	Chain	Residues	Atoms			ZeroOcc	AltConf
3	A	1	Total	C	O	0	0
			34	23	11		
3	A	1	Total	C	O	0	0
			34	23	11		
3	A	1	Total	C	O	0	0
			12	11	1		

- Molecule 4 is PAROXETINE (three-letter code: 8PR) (formula: C₁₉H₂₀FN₁O₃).



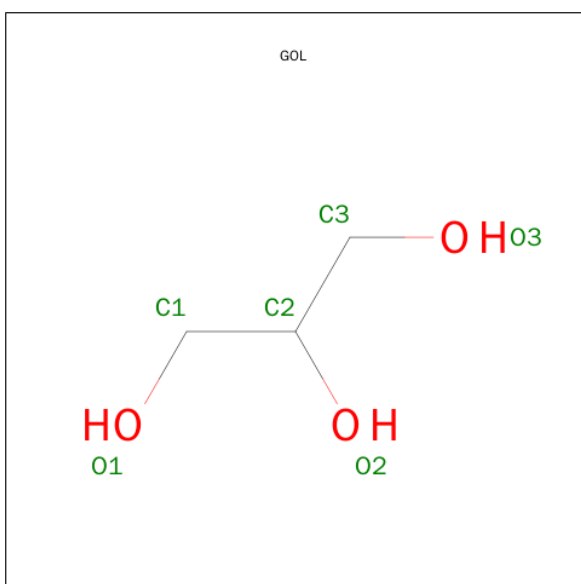
Mol	Chain	Residues	Atoms					ZeroOcc	AltConf
4	A	1	Total	C	F	N	O	0	0
			24	19	1	1	3		

- Molecule 5 is SULFATE ION (three-letter code: SO4) (formula: O₄S).



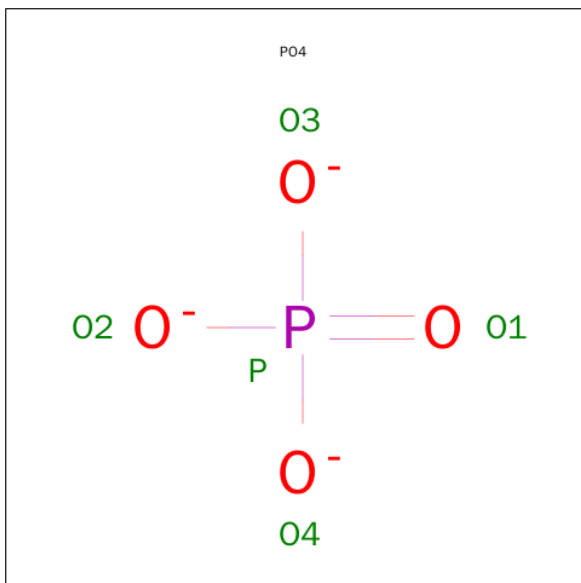
Mol	Chain	Residues	Atoms			ZeroOcc	AltConf
5	A	1	Total	O	S	0	0
			5	4	1		
5	A	1	Total	O	S	0	0
			5	4	1		
5	A	1	Total	O	S	0	0
			5	4	1		
5	A	1	Total	O	S	0	0
			5	4	1		

- Molecule 6 is GLYCEROL (three-letter code: GOL) (formula: C₃H₈O₃).



Mol	Chain	Residues	Atoms			ZeroOcc	AltConf
6	A	1	Total	C	O	0	0
			6	3	3		

- Molecule 7 is PHOSPHATE ION (three-letter code: PO4) (formula: O₄P).



Mol	Chain	Residues	Atoms			ZeroOcc	AltConf
7	A	1	Total	O	P	0	0
			5	4	1		
7	A	1	Total	O	P	0	0
			5	4	1		

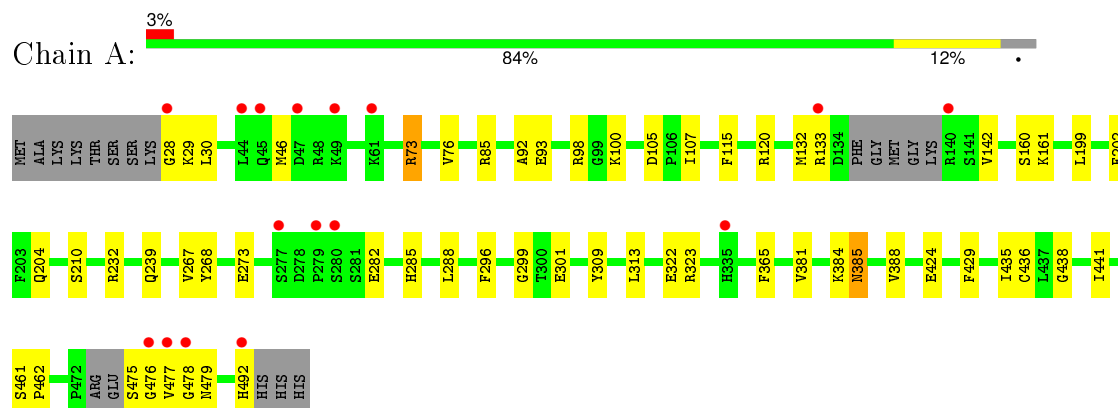
- Molecule 8 is water.

Mol	Chain	Residues	Atoms		ZeroOcc	AltConf
8	A	219	Total	O	0	0
			219	219		

3 Residue-property plots [i](#)

These plots are drawn for all protein, RNA and DNA chains in the entry. The first graphic for a chain summarises the proportions of errors displayed in the second graphic. The second graphic shows the sequence view annotated by issues in geometry and electron density. Residues are color-coded according to the number of geometric quality criteria for which they contain at least one outlier: green = 0, yellow = 1, orange = 2 and red = 3 or more. A red dot above a residue indicates a poor fit to the electron density ($RSRZ > 2$). Stretches of 2 or more consecutive residues without any outlier are shown as a green connector. Residues present in the sample, but not in the model, are shown in grey.

- Molecule 1: Cytochrome P450 2B4



4 Data and refinement statistics

Property	Value	Source
Space group	P 31 2 1	Depositor
Cell constants a, b, c, α , β , γ	90.76 Å 90.76 Å 153.68 Å 90.00° 90.00° 120.00°	Depositor
Resolution (Å)	78.60 – 2.14 45.38 – 2.14	Depositor EDS
% Data completeness (in resolution range)	99.3 (78.60-2.14) 99.4 (45.38-2.14)	Depositor EDS
R_{merge}	0.06	Depositor
R_{sym}	0.06	Depositor
$\langle I/\sigma(I) \rangle$ ¹	4.40 (at 2.14 Å)	Xtriage
Refinement program	REFMAC 5.5.0102	Depositor
R, R_{free}	0.187 , 0.229 0.209 , 0.236	Depositor DCC
R_{free} test set	2057 reflections (5.30%)	DCC
Wilson B-factor (Å ²)	37.1	Xtriage
Anisotropy	0.015	Xtriage
Bulk solvent k_{sol} (e/Å ³), B_{sol} (Å ²)	0.36 , 49.9	EDS
Estimated twinning fraction	0.026 for -h,-k,l	Xtriage
L-test for twinning ²	$\langle L \rangle = 0.49$, $\langle L^2 \rangle = 0.32$	Xtriage
Outliers	0 of 41021 reflections	Xtriage
F_o, F_c correlation	0.95	EDS
Total number of atoms	4056	wwPDB-VP
Average B, all atoms (Å ²)	40.0	wwPDB-VP

Xtriage's analysis on translational NCS is as follows: *The largest off-origin peak in the Patterson function is 4.29% of the height of the origin peak. No significant pseudotranslation is detected.*

¹ Intensities estimated from amplitudes.

² Theoretical values of $\langle |L| \rangle$, $\langle L^2 \rangle$ for acentric reflections are 0.5, 0.375 respectively for untwinned datasets, and 0.333, 0.2 for perfectly twinned datasets.

5 Model quality [i](#)

5.1 Standard geometry [i](#)

Bond lengths and bond angles in the following residue types are not validated in this section: GOL, PO4, SO4, HEM, 8PR, CM5

The Z score for a bond length (or angle) is the number of standard deviations the observed value is removed from the expected value. A bond length (or angle) with $|Z| > 5$ is considered an outlier worth inspection. RMSZ is the root-mean-square of all Z scores of the bond lengths (or angles).

Mol	Chain	Bond lengths		Bond angles	
		RMSZ	$\# Z > 5$	RMSZ	$\# Z > 5$
1	A	1.11	2/3745 (0.1%)	0.85	2/5074 (0.0%)

All (2) bond length outliers are listed below:

Mol	Chain	Res	Type	Atoms	Z	Observed(Å)	Ideal(Å)
1	A	322	GLU	CG-CD	5.57	1.60	1.51
1	A	267	VAL	CB-CG1	5.50	1.64	1.52

All (2) bond angle outliers are listed below:

Mol	Chain	Res	Type	Atoms	Z	Observed($^{\circ}$)	Ideal($^{\circ}$)
1	A	385	ASN	CB-CA-C	-5.61	99.17	110.40
1	A	73	ARG	NE-CZ-NH2	-5.31	117.64	120.30

There are no chirality outliers.

There are no planarity outliers.

5.2 Too-close contacts [i](#)

In the following table, the Non-H and H(model) columns list the number of non-hydrogen atoms and hydrogen atoms in the chain respectively. The H(added) column lists the number of hydrogen atoms added and optimized by MolProbity. The Clashes column lists the number of clashes within the asymmetric unit, whereas Symm-Clashes lists symmetry related clashes.

Mol	Chain	Non-H	H(model)	H(added)	Clashes	Symm-Clashes
1	A	3654	0	3636	62	0
2	A	43	0	30	4	0
3	A	80	0	105	14	0
4	A	24	0	20	0	0

Continued on next page...

Continued from previous page...

Mol	Chain	Non-H	H(model)	H(added)	Clashes	Symm-Clashes
5	A	20	0	0	1	0
6	A	6	0	8	5	0
7	A	10	0	0	0	0
8	A	219	0	0	5	0
All	All	4056	0	3799	70	0

The all-atom clashscore is defined as the number of clashes found per 1000 atoms (including hydrogen atoms). The all-atom clashscore for this structure is 9.

All (70) close contacts within the same asymmetric unit are listed below, sorted by their clash magnitude.

Atom-1	Atom-2	Interatomic distance (Å)	Clash overlap (Å)
1:A:475:SER:HB2	1:A:476:GLY:CA	1.50	1.38
1:A:475:SER:HB2	1:A:476:GLY:HA2	1.06	1.06
1:A:475:SER:CB	1:A:476:GLY:HA2	1.79	1.04
1:A:475:SER:HB2	1:A:476:GLY:HA3	1.42	1.01
1:A:475:SER:CB	1:A:476:GLY:CA	2.36	0.98
1:A:475:SER:HB3	1:A:479:ASN:HA	1.47	0.93
1:A:46:MET:O	3:A:504:CM5:H12	1.74	0.87
1:A:29:LYS:HG3	1:A:30:LEU:H	1.48	0.78
3:A:503:CM5:H24	3:A:503:CM5:O21	1.83	0.78
1:A:133:ARG:CG	1:A:133:ARG:O	2.34	0.75
1:A:93:GLU:HB2	6:A:510:GOL:H12	1.66	0.75
1:A:29:LYS:HG3	1:A:30:LEU:N	2.01	0.74
1:A:93:GLU:CB	6:A:510:GOL:H12	2.22	0.69
1:A:384:LYS:O	1:A:385:ASN:HB2	1.93	0.68
1:A:133:ARG:HG2	1:A:133:ARG:O	1.96	0.65
1:A:29:LYS:CG	1:A:30:LEU:H	2.10	0.64
1:A:28:GLY:HA3	1:A:381:VAL:CG2	2.29	0.63
3:A:502:CM5:C24	3:A:502:CM5:H20	2.12	0.62
1:A:92:ALA:N	6:A:510:GOL:H2	2.15	0.60
3:A:502:CM5:C24	3:A:502:CM5:O20	2.50	0.60
3:A:503:CM5:H26	3:A:503:CM5:O20	2.01	0.60
1:A:73:ARG:HD3	8:A:605:HOH:O	2.02	0.58
1:A:475:SER:CB	1:A:479:ASN:HA	2.29	0.57
2:A:501:HEM:HBC2	2:A:501:HEM:HMC2	1.87	0.56
1:A:120:ARG:HA	1:A:282:GLU:HG3	1.86	0.56
1:A:299:GLY:HA2	2:A:501:HEM:C2C	2.41	0.56
1:A:476:GLY:C	1:A:478:GLY:N	2.58	0.56
1:A:476:GLY:C	1:A:478:GLY:H	2.08	0.56
1:A:93:GLU:H	6:A:510:GOL:H2	1.70	0.55

Continued on next page...

Continued from previous page...

Atom-1	Atom-2	Interatomic distance (Å)	Clash overlap (Å)
1:A:85:ARG:HD3	8:A:723:HOH:O	2.07	0.55
1:A:98:ARG:HG2	1:A:115:PHE:HA	1.89	0.54
2:A:501:HEM:HBC2	2:A:501:HEM:CMC	2.37	0.54
1:A:273:GLU:HB2	3:A:503:CM5:C5	2.39	0.53
1:A:92:ALA:H	6:A:510:GOL:H2	1.74	0.53
1:A:210:SER:HA	1:A:477:VAL:HG13	1.91	0.53
1:A:28:GLY:HA3	1:A:381:VAL:HG23	1.90	0.52
1:A:232:ARG:HD2	8:A:740:HOH:O	2.08	0.52
1:A:142:VAL:HG11	1:A:441:ILE:HG12	1.91	0.52
1:A:365:PHE:CE2	1:A:477:VAL:HA	2.45	0.52
1:A:210:SER:HA	1:A:477:VAL:CG1	2.40	0.51
1:A:29:LYS:O	1:A:381:VAL:N	2.34	0.51
1:A:133:ARG:HG3	1:A:133:ARG:O	2.11	0.51
1:A:309:TYR:CE2	1:A:313:LEU:HD11	2.46	0.50
1:A:429:PHE:HB3	1:A:436:CYS:HB3	1.93	0.50
1:A:268:TYR:CE1	1:A:288:LEU:HB2	2.47	0.49
1:A:28:GLY:HA3	1:A:381:VAL:HG21	1.94	0.48
1:A:29:LYS:CG	1:A:30:LEU:N	2.66	0.48
1:A:273:GLU:HB2	3:A:503:CM5:H51	1.95	0.48
1:A:202:PHE:CD1	3:A:502:CM5:H101	2.48	0.48
1:A:85:ARG:NE	1:A:424:GLU:HG3	2.28	0.48
1:A:100:LYS:HD2	1:A:105:ASP:CG	2.35	0.47
1:A:296:PHE:CD1	3:A:502:CM5:H102	2.50	0.47
1:A:365:PHE:CZ	1:A:477:VAL:HA	2.50	0.46
1:A:107:ILE:CD1	1:A:239:GLN:HG2	2.45	0.46
1:A:273:GLU:OE1	3:A:503:CM5:H52	2.16	0.46
1:A:204:GLN:HB2	8:A:766:HOH:O	2.17	0.45
3:A:503:CM5:C24	3:A:503:CM5:O21	2.60	0.45
3:A:502:CM5:O25	3:A:502:CM5:O20	2.35	0.45
1:A:477:VAL:O	1:A:477:VAL:HG23	2.16	0.45
1:A:438:GLY:HA3	2:A:501:HEM:C3C	2.53	0.44
1:A:273:GLU:HG2	3:A:503:CM5:H72	2.00	0.43
1:A:160:SER:O	1:A:161:LYS:HB2	2.20	0.41
1:A:285:HIS:HE1	8:A:651:HOH:O	2.03	0.41
1:A:273:GLU:HB2	3:A:503:CM5:H52	2.03	0.41
1:A:132:MET:HB2	1:A:132:MET:HE3	1.90	0.41
1:A:461:SER:OG	1:A:462:PRO:HD2	2.21	0.41
1:A:199:LEU:HD23	1:A:199:LEU:C	2.41	0.41
1:A:435:ILE:O	1:A:436:CYS:C	2.59	0.40
1:A:76:VAL:O	1:A:388:VAL:HA	2.20	0.40
1:A:323:ARG:NH2	5:A:507:SO4:O2	2.48	0.40

There are no symmetry-related clashes.

5.3 Torsion angles [i](#)

5.3.1 Protein backbone [i](#)

In the following table, the Percentiles column shows the percent Ramachandran outliers of the chain as a percentile score with respect to all X-ray entries followed by that with respect to entries of similar resolution.

The Analysed column shows the number of residues for which the backbone conformation was analysed, and the total number of residues.

Mol	Chain	Analysed	Favoured	Allowed	Outliers	Percentiles	
1	A	452/476 (95%)	439 (97%)	13 (3%)	0	100	100

There are no Ramachandran outliers to report.

5.3.2 Protein sidechains [i](#)

In the following table, the Percentiles column shows the percent sidechain outliers of the chain as a percentile score with respect to all X-ray entries followed by that with respect to entries of similar resolution.

The Analysed column shows the number of residues for which the sidechain conformation was analysed, and the total number of residues.

Mol	Chain	Analysed	Rotameric	Outliers	Percentiles	
1	A	400/421 (95%)	398 (100%)	2 (0%)	92	95

All (2) residues with a non-rotameric sidechain are listed below:

Mol	Chain	Res	Type
1	A	301	GLU
1	A	492	HIS

Some sidechains can be flipped to improve hydrogen bonding and reduce clashes. All (1) such sidechains are listed below:

Mol	Chain	Res	Type
1	A	285	HIS

5.3.3 RNA ⓘ

There are no RNA molecules in this entry.

5.4 Non-standard residues in protein, DNA, RNA chains ⓘ

There are no non-standard protein/DNA/RNA residues in this entry.

5.5 Carbohydrates ⓘ

There are no carbohydrates in this entry.

5.6 Ligand geometry ⓘ

12 ligands are modelled in this entry.

In the following table, the Counts columns list the number of bonds (or angles) for which Mogul statistics could be retrieved, the number of bonds (or angles) that are observed in the model and the number of bonds (or angles) that are defined in the chemical component dictionary. The Link column lists molecule types, if any, to which the group is linked. The Z score for a bond length (or angle) is the number of standard deviations the observed value is removed from the expected value. A bond length (or angle) with $|Z| > 2$ is considered an outlier worth inspection. RMSZ is the root-mean-square of all Z scores of the bond lengths (or angles).

Mol	Type	Chain	Res	Link	Bond lengths			Bond angles		
					Counts	RMSZ	$\# Z > 2$	Counts	RMSZ	$\# Z > 2$
2	HEM	A	501	1	30,50,50	2.46	10 (33%)	24,82,82	2.83	10 (41%)
3	CM5	A	502	-	36,36,36	0.39	0	49,49,49	0.77	1 (2%)
3	CM5	A	503	-	36,36,36	0.39	0	49,49,49	0.73	1 (2%)
3	CM5	A	504	-	12,12,36	0.22	0	13,13,49	0.70	0
4	8PR	A	505	-	26,27,27	3.60	10 (38%)	33,37,37	1.91	8 (24%)
5	SO4	A	506	-	4,4,4	1.43	0	6,6,6	0.56	0
5	SO4	A	507	-	4,4,4	1.20	0	6,6,6	0.32	0
5	SO4	A	508	-	4,4,4	1.50	0	6,6,6	0.30	0
5	SO4	A	509	-	4,4,4	3.15	4 (100%)	6,6,6	0.42	0
6	GOL	A	510	-	5,5,5	0.61	0	5,5,5	0.39	0
7	PO4	A	511	-	4,4,4	0.79	0	6,6,6	0.30	0
7	PO4	A	512	-	4,4,4	1.34	0	6,6,6	0.28	0

In the following table, the Chirals column lists the number of chiral outliers, the number of chiral centers analysed, the number of these observed in the model and the number defined in the chemical component dictionary. Similar counts are reported in the Torsion and Rings columns. '-' means

no outliers of that kind were identified.

Mol	Type	Chain	Res	Link	Chirals	Torsions	Rings
2	HEM	A	501	1	-	0/10/54/54	0/0/8/8
3	CM5	A	502	-	-	0/17/65/65	0/3/3/3
3	CM5	A	503	-	-	0/17/65/65	0/3/3/3
3	CM5	A	504	-	-	0/6/14/65	0/1/1/3
4	8PR	A	505	-	-	0/9/26/26	0/4/4/4
5	SO4	A	506	-	-	0/0/0/0	0/0/0/0
5	SO4	A	507	-	-	0/0/0/0	0/0/0/0
5	SO4	A	508	-	-	0/0/0/0	0/0/0/0
5	SO4	A	509	-	-	0/0/0/0	0/0/0/0
6	GOL	A	510	-	-	0/4/4/4	0/0/0/0
7	PO4	A	511	-	-	0/0/0/0	0/0/0/0
7	PO4	A	512	-	-	0/0/0/0	0/0/0/0

All (24) bond length outliers are listed below:

Mol	Chain	Res	Type	Atoms	Z	Observed(Å)	Ideal(Å)
2	A	501	HEM	C3B-C4B	-8.59	1.44	1.51
4	A	505	8PR	OAP-CAU	-8.49	1.26	1.38
4	A	505	8PR	OAQ-CAV	-5.84	1.30	1.38
2	A	501	HEM	C2C-C1C	-3.48	1.46	1.52
5	A	509	SO4	O3-S	-3.20	1.35	1.47
5	A	509	SO4	O1-S	-3.20	1.36	1.47
5	A	509	SO4	O4-S	-3.13	1.36	1.47
5	A	509	SO4	O2-S	-3.09	1.36	1.47
2	A	501	HEM	C3D-C4D	-2.97	1.47	1.51
4	A	505	8PR	CAH-CAV	-2.85	1.33	1.38
4	A	505	8PR	CAG-CAU	-2.77	1.33	1.39
2	A	501	HEM	C2D-C1D	-2.26	1.44	1.51
4	A	505	8PR	OAQ-CAS	2.34	1.43	1.37
2	A	501	HEM	CAA-C2A	2.68	1.56	1.52
2	A	501	HEM	C3B-CAB	2.84	1.56	1.51
4	A	505	8PR	CAK-NAN	3.00	1.51	1.46
2	A	501	HEM	C4C-NC	3.10	1.39	1.36
2	A	501	HEM	FE-ND	3.22	2.14	1.97
4	A	505	8PR	CAU-CAV	3.35	1.48	1.39
2	A	501	HEM	FE-NB	3.64	2.16	1.97
2	A	501	HEM	C1C-NC	4.10	1.41	1.36
4	A	505	8PR	CAH-CAS	7.36	1.52	1.38
4	A	505	8PR	CAG-CAD	7.43	1.52	1.38
4	A	505	8PR	CAD-CAS	7.63	1.54	1.38

All (20) bond angle outliers are listed below:

Mol	Chain	Res	Type	Atoms	Z	Observed(°)	Ideal(°)
4	A	505	8PR	CAJ-CAX-CAT	-4.86	104.49	112.76
4	A	505	8PR	CAG-CAD-CAS	-4.75	113.76	119.74
2	A	501	HEM	CAA-CBA-CGA	-4.34	104.79	112.75
2	A	501	HEM	CBD-CAD-C3D	-3.87	102.30	113.55
4	A	505	8PR	CAC-CAF-CAT	-3.82	117.27	121.20
2	A	501	HEM	C3C-CAC-CBC	-3.34	119.34	124.46
2	A	501	HEM	CAA-C2A-C1A	-3.32	123.40	127.01
3	A	503	CM5	C24-O23-C16	-2.38	111.80	118.01
4	A	505	8PR	CAD-CAS-CAH	-2.08	117.63	120.56
4	A	505	8PR	CAG-CAU-CAV	-2.07	118.59	121.41
3	A	502	CM5	O14-C15-C16	2.13	114.25	109.75
4	A	505	8PR	CAD-CAG-CAU	2.25	124.37	120.03
2	A	501	HEM	C3B-C4B-CHC	2.66	126.90	123.16
4	A	505	8PR	CAF-CAT-CAE	2.91	122.02	118.31
4	A	505	8PR	CAJ-CAI-NAN	2.95	115.45	110.46
2	A	501	HEM	CMD-C2D-C3D	3.18	128.43	114.35
2	A	501	HEM	CAD-C3D-C4D	3.60	125.17	112.47
2	A	501	HEM	CMC-C2C-C3C	4.62	128.05	116.53
2	A	501	HEM	CMB-C2B-C3B	5.79	130.98	116.53
2	A	501	HEM	CAD-C3D-C2D	5.98	130.42	113.22

There are no chirality outliers.

There are no torsion outliers.

There are no ring outliers.

6 monomers are involved in 24 short contacts:

Mol	Chain	Res	Type	Clashes	Symm-Clashes
2	A	501	HEM	4	0
3	A	502	CM5	5	0
3	A	503	CM5	8	0
3	A	504	CM5	1	0
5	A	507	SO4	1	0
6	A	510	GOL	5	0

5.7 Other polymers [i](#)

There are no such residues in this entry.

5.8 Polymer linkage issues [i](#)

There are no chain breaks in this entry.

6 Fit of model and data [i](#)

6.1 Protein, DNA and RNA chains [i](#)

In the following table, the column labelled ‘#RSRZ> 2’ contains the number (and percentage) of RSRZ outliers, followed by percent RSRZ outliers for the chain as percentile scores relative to all X-ray entries and entries of similar resolution. The OWAB column contains the minimum, median, 95th percentile and maximum values of the occupancy-weighted average B-factor per residue. The column labelled ‘Q< 0.9’ lists the number of (and percentage) of residues with an average occupancy less than 0.9.

Mol	Chain	Analysed	<RSRZ>	#RSRZ>2	OWAB(Å ²)	Q<0.9
1	A	458/476 (96%)	0.07	16 (3%) 48 58	16, 36, 55, 81	0

All (16) RSRZ outliers are listed below:

Mol	Chain	Res	Type	RSRZ
1	A	28	GLY	6.6
1	A	476	GLY	5.9
1	A	478	GLY	5.8
1	A	140	ARG	4.6
1	A	477	VAL	4.6
1	A	44	LEU	3.8
1	A	492	HIS	3.8
1	A	335	HIS	3.5
1	A	49	LYS	3.3
1	A	47	ASP	3.1
1	A	61	LYS	2.8
1	A	277	SER	2.6
1	A	133	ARG	2.5
1	A	280	SER	2.4
1	A	279	PRO	2.3
1	A	45	GLN	2.2

6.2 Non-standard residues in protein, DNA, RNA chains [i](#)

There are no non-standard protein/DNA/RNA residues in this entry.

6.3 Carbohydrates [i](#)

There are no carbohydrates in this entry.

6.4 Ligands

In the following table, the Atoms column lists the number of modelled atoms in the group and the number defined in the chemical component dictionary. LLDF column lists the quality of electron density of the group with respect to its neighbouring residues in protein, DNA or RNA chains. The B-factors column lists the minimum, median, 95th percentile and maximum values of B factors of atoms in the group. The column labelled 'Q< 0.9' lists the number of atoms with occupancy less than 0.9.

Mol	Type	Chain	Res	Atoms	RSCC	RSR	LLDF	B-factors(Å ²)	Q<0.9
7	PO4	A	512	5/5	0.95	0.34	10.59	69,70,71,72	0
3	CM5	A	503	34/34	0.57	0.32	7.94	89,144,167,172	0
3	CM5	A	502	34/34	0.52	0.36	6.47	89,144,167,172	0
6	GOL	A	510	6/6	0.82	0.18	2.72	50,58,59,59	0
3	CM5	A	504	12/34	0.61	0.32	1.90	89,95,114,116	0
2	HEM	A	501	43/43	0.98	0.14	0.31	23,27,29,32	0
4	8PR	A	505	24/24	0.94	0.12	-0.57	39,43,48,49	0
7	PO4	A	511	5/5	0.76	0.23	-	71,74,76,79	0
5	SO4	A	509	5/5	0.99	0.09	-	46,50,51,53	0
5	SO4	A	508	5/5	0.93	0.21	-	71,72,72,72	0
5	SO4	A	506	5/5	0.90	0.28	-	85,86,87,88	0
5	SO4	A	507	5/5	0.91	0.20	-	81,81,83,83	0

6.5 Other polymers

There are no such residues in this entry.