



Full wwPDB X-ray Structure Validation Report ⓘ

Feb 1, 2016 – 09:49 AM GMT

PDB ID : 3JTC
Title : Importance of Mg²⁺ in the Ca²⁺-Dependent Folding of the gamma-Carboxyglutamic Acid Domains of Vitamin K-Dependent clotting and anticlotting Proteins
Authors : Bajaj, S.P.; Vadivel, K.; Agah, S.; Cascio, D.; Krishnaswamy, S.; Esmon, C.; Padmanabhan, K.
Deposited on : 2009-09-11
Resolution : 1.60 Å(reported)

This is a Full wwPDB X-ray Structure Validation Report for a publicly released PDB entry.
We welcome your comments at validation@mail.wwpdb.org
A user guide is available at
<http://wwpdb.org/validation/2016/XrayValidationReportHelp>
with specific help available everywhere you see the ⓘ symbol.

The following versions of software and data (see [references ⓘ](#)) were used in the production of this report:

MolProbity : 4.02b-467
Mogul : 1.7 (RC4), CSD as536be (2015)
Xtriage (Phenix) : 1.9-1692
EDS : rb-20026688
Percentile statistics : 20151230.v01 (using entries in the PDB archive December 30th 2015)
Refmac : 5.8.0135
CCP4 : 6.5.0
Ideal geometry (proteins) : Engh & Huber (2001)
Ideal geometry (DNA, RNA) : Parkinson et al. (1996)
Validation Pipeline (wwPDB-VP) : trunk26865

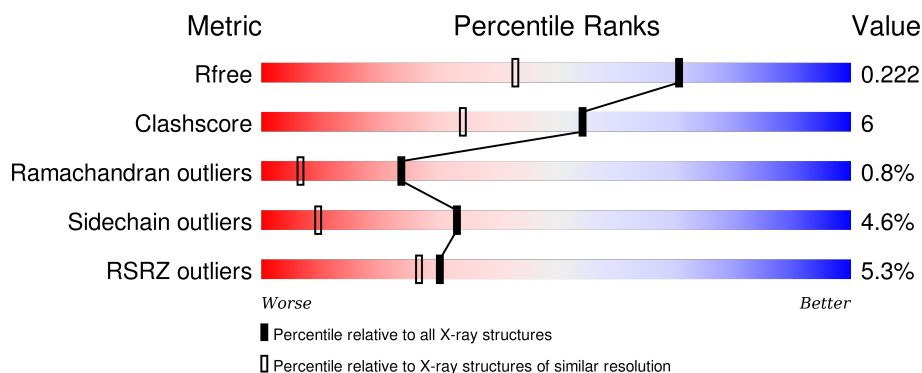
1 Overall quality at a glance

The following experimental techniques were used to determine the structure:

X-RAY DIFFRACTION

The reported resolution of this entry is 1.60 Å.

Percentile scores (ranging between 0-100) for global validation metrics of the entry are shown in the following graphic. The table shows the number of entries on which the scores are based.



Metric	Whole archive (#Entries)	Similar resolution (#Entries, resolution range(Å))
R_{free}	91344	2475 (1.60-1.60)
Clashscore	102246	2732 (1.60-1.60)
Ramachandran outliers	100387	2654 (1.60-1.60)
Sidechain outliers	100360	2653 (1.60-1.60)
RSRZ outliers	91569	2479 (1.60-1.60)

The table below summarises the geometric issues observed across the polymeric chains and their fit to the electron density. The red, orange, yellow and green segments on the lower bar indicate the fraction of residues that contain outliers for ≥ 3 , 2, 1 and 0 types of geometric quality criteria. A grey segment represents the fraction of residues that are not modelled. The numeric value for each fraction is indicated below the corresponding segment, with a dot representing fractions $\leq 5\%$. The upper red bar (where present) indicates the fraction of residues that have poor fit to the electron density. The numeric value is given above the bar.

Mol	Chain	Length	Quality of chain
1	A	193	<div> <div>3%</div> <div>73% 15% • 11%</div> </div>
1	B	193	<div> <div>7%</div> <div>71% 18% • 10%</div> </div>
2	C	33	<div> <div>91% 9%</div> </div>
2	D	33	<div> <div>6%</div> <div>79% 21%</div> </div>

The following table lists non-polymeric compounds, carbohydrate monomers and non-standard

residues in protein, DNA, RNA chains that are outliers for geometric or electron-density-fit criteria:

Mol	Type	Chain	Res	Chirality	Geometry	Clashes	Electron density
3	NAG	A	603	-	-	X	X
3	NAG	A	604	-	-	-	X
3	NAG	B	601	-	-	-	X
4	NDG	A	605	-	-	-	X
5	PTY	A	606	-	-	-	X
5	PTY	B	607	-	-	-	X

2 Entry composition [i](#)

There are 8 unique types of molecules in this entry. The entry contains 4027 atoms, of which 0 are hydrogens and 0 are deuteriums.

In the tables below, the ZeroOcc column contains the number of atoms modelled with zero occupancy, the AltConf column contains the number of residues with at least one atom in alternate conformation and the Trace column contains the number of residues modelled with at most 2 atoms.

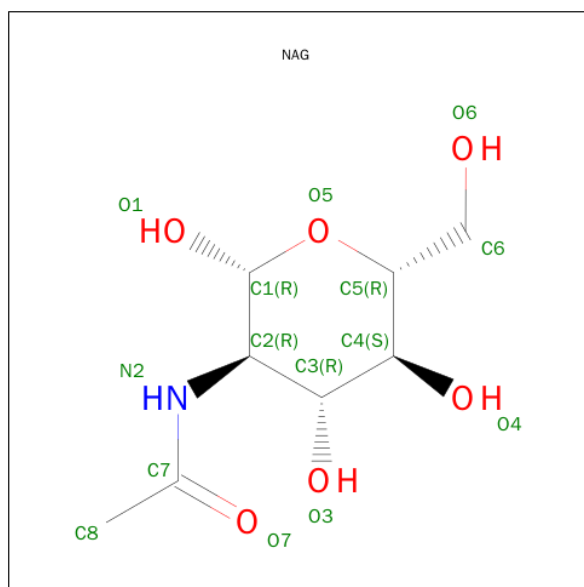
- Molecule 1 is a protein called Endothelial protein C receptor.

Mol	Chain	Residues	Atoms					ZeroOcc	AltConf	Trace
1	A	172	Total	C	N	O	S	0	0	0
			1402	895	249	254	4			
1	B	173	Total	C	N	O	S	0	0	0
			1412	901	250	257	4			

- Molecule 2 is a protein called Vitamin K-dependent protein C.

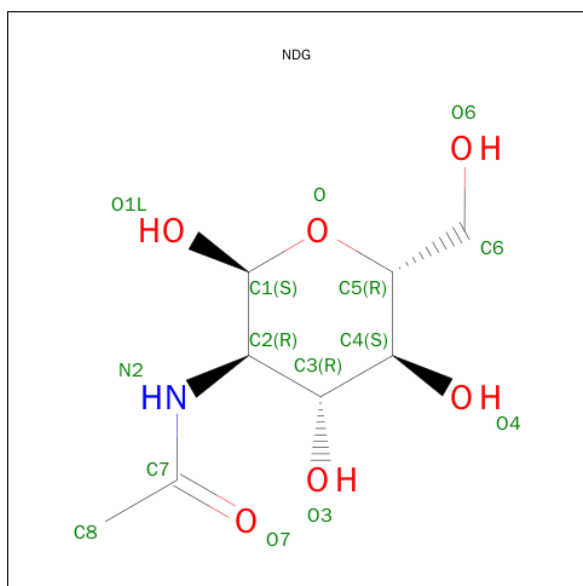
Mol	Chain	Residues	Atoms					ZeroOcc	AltConf	Trace
2	C	33	Total	C	N	O	S	0	0	0
			304	179	45	78	2			
2	D	33	Total	C	N	O	S	0	0	0
			304	179	45	78	2			

- Molecule 3 is SUGAR (N-ACETYL-D-GLUCOSAMINE) (three-letter code: NAG) (formula: $C_8H_{15}NO_6$).



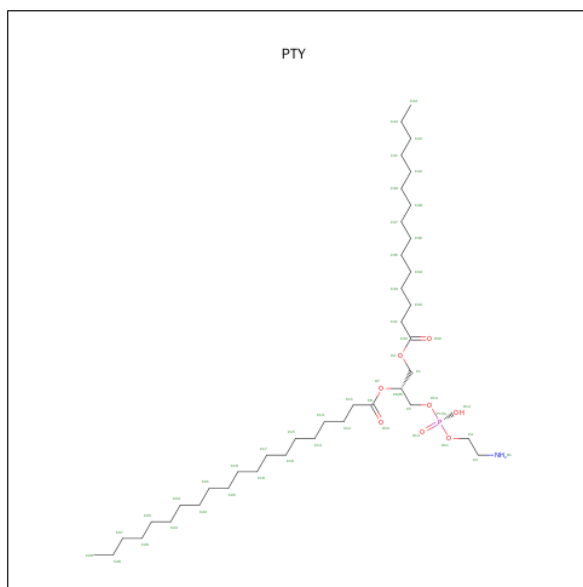
Mol	Chain	Residues	Atoms				ZeroOcc	AltConf
3	A	1	Total	C	N	O	0	0
			14	8	1	5		
3	A	1	Total	C	N	O	0	0
			14	8	1	5		
3	B	1	Total	C	N	O	0	0
			14	8	1	5		
3	B	1	Total	C	N	O	0	0
			14	8	1	5		
3	B	1	Total	C	N	O	0	0
			14	8	1	5		

- Molecule 4 is SUGAR (2-(ACETYLAMINO)-2-DEOXY-A-D-GLUCOPYRANOSE) (three-letter code: NDG) (formula: $C_8H_{15}NO_6$).



Mol	Chain	Residues	Atoms				ZeroOcc	AltConf
4	A	1	Total	C	N	O	0	0
			14	8	1	5		

- Molecule 5 is PHOSPHATIDYLETHANOLAMINE (three-letter code: PTY) (formula: $C_{40}H_{80}NO_8P$).



Mol	Chain	Residues	Atoms					ZeroOcc	AltConf
5	A	1	Total	C	N	O	P	0	0
			50	40	1	8	1		
5	B	1	Total	C	N	O	P	0	0
			50	40	1	8	1		

- Molecule 6 is MAGNESIUM ION (three-letter code: MG) (formula: Mg).

Mol	Chain	Residues	Atoms		ZeroOcc	AltConf
6	D	2	Total	Mg	0	0
			2	2		
6	C	2	Total	Mg	0	0
			2	2		

- Molecule 7 is CALCIUM ION (three-letter code: CA) (formula: Ca).

Mol	Chain	Residues	Atoms		ZeroOcc	AltConf
7	D	5	Total	Ca	0	0
			5	5		
7	C	5	Total	Ca	0	0
			5	5		

- Molecule 8 is water.

Mol	Chain	Residues	Atoms		ZeroOcc	AltConf
8	A	179	Total	O	0	0
			179	179		

Continued on next page...

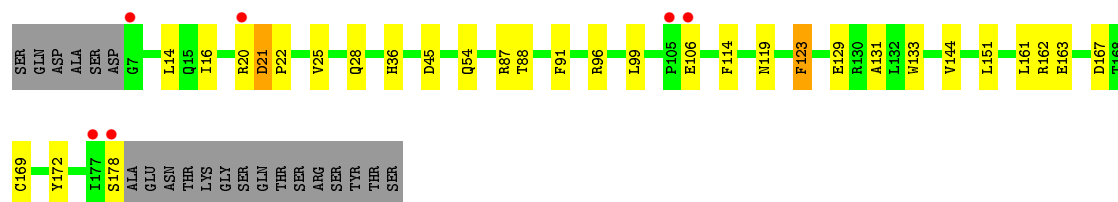
Continued from previous page...

Mol	Chain	Residues	Atoms		ZeroOcc	AltConf
8	B	115	Total 115	O 115	0	0
8	C	66	Total 66	O 66	0	0
8	D	47	Total 47	O 47	0	0

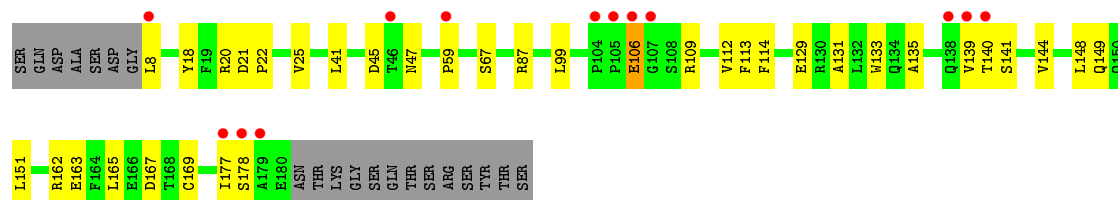
3 Residue-property plots [i](#)

These plots are drawn for all protein, RNA and DNA chains in the entry. The first graphic for a chain summarises the proportions of errors displayed in the second graphic. The second graphic shows the sequence view annotated by issues in geometry and electron density. Residues are color-coded according to the number of geometric quality criteria for which they contain at least one outlier: green = 0, yellow = 1, orange = 2 and red = 3 or more. A red dot above a residue indicates a poor fit to the electron density ($RSRZ > 2$). Stretches of 2 or more consecutive residues without any outlier are shown as a green connector. Residues present in the sample, but not in the model, are shown in grey.

- Molecule 1: Endothelial protein C receptor



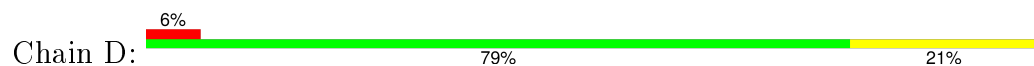
- Molecule 1: Endothelial protein C receptor



- Molecule 2: Vitamin K-dependent protein C



- Molecule 2: Vitamin K-dependent protein C



4 Data and refinement statistics

Property	Value	Source
Space group	P 1 21 1	Depositor
Cell constants a, b, c, α , β , γ	59.22Å 62.36Å 71.03Å 90.00° 101.81° 90.00°	Depositor
Resolution (Å)	23.22 – 1.60 23.22 – 1.60	Depositor EDS
% Data completeness (in resolution range)	89.1 (23.22-1.60) 89.1 (23.22-1.60)	Depositor EDS
R_{merge}	(Not available)	Depositor
R_{sym}	0.04	Depositor
$\langle I/\sigma(I) \rangle$ ¹	1.91 (at 1.60Å)	Xtriage
Refinement program	REFMAC 5.5.0109	Depositor
R, R_{free}	0.191 , 0.226 0.188 , 0.222	Depositor DCC
R_{free} test set	3024 reflections (5.35%)	DCC
Wilson B-factor (Å ²)	21.7	Xtriage
Anisotropy	0.053	Xtriage
Bulk solvent k_{sol} (e/Å ³), B_{sol} (Å ²)	0.38 , 46.0	EDS
Estimated twinning fraction	No twinning to report.	Xtriage
L-test for twinning ²	$\langle L \rangle = 0.50$, $\langle L^2 \rangle = 0.33$	Xtriage
Outliers	0 of 59599 reflections	Xtriage
F_o, F_c correlation	0.96	EDS
Total number of atoms	4027	wwPDB-VP
Average B, all atoms (Å ²)	25.0	wwPDB-VP

Xtriage's analysis on translational NCS is as follows: *The largest off-origin peak in the Patterson function is 13.26% of the height of the origin peak. No significant pseudotranslation is detected.*

¹Intensities estimated from amplitudes.

²Theoretical values of $\langle |L| \rangle$, $\langle L^2 \rangle$ for acentric reflections are 0.5, 0.375 respectively for untwinned datasets, and 0.333, 0.2 for perfectly twinned datasets.

5 Model quality [i](#)

5.1 Standard geometry [i](#)

Bond lengths and bond angles in the following residue types are not validated in this section: MG, NAG, CA, NDG, PTY, CGU

The Z score for a bond length (or angle) is the number of standard deviations the observed value is removed from the expected value. A bond length (or angle) with $|Z| > 5$ is considered an outlier worth inspection. RMSZ is the root-mean-square of all Z scores of the bond lengths (or angles).

Mol	Chain	Bond lengths		Bond angles	
		RMSZ	$\# Z > 5$	RMSZ	$\# Z > 5$
1	A	1.23	2/1440 (0.1%)	1.13	3/1960 (0.2%)
1	B	1.24	3/1450 (0.2%)	1.07	2/1974 (0.1%)
2	C	1.33	0/193	1.23	1/246 (0.4%)
2	D	1.24	0/193	1.24	2/246 (0.8%)
All	All	1.24	5/3276 (0.2%)	1.12	8/4426 (0.2%)

All (5) bond length outliers are listed below:

Mol	Chain	Res	Type	Atoms	Z	Observed(Å)	Ideal(Å)
1	B	18	TYR	CG-CD1	5.63	1.46	1.39
1	A	172	TYR	CG-CD1	5.56	1.46	1.39
1	A	129	GLU	CD-OE1	5.28	1.31	1.25
1	B	129	GLU	CG-CD	5.16	1.59	1.51
1	B	113	PHE	CE2-CZ	5.09	1.47	1.37

All (8) bond angle outliers are listed below:

Mol	Chain	Res	Type	Atoms	Z	Observed(°)	Ideal(°)
2	D	23	ASP	CB-CG-OD1	5.94	123.65	118.30
1	B	87	ARG	NE-CZ-NH2	-5.94	117.33	120.30
1	B	41	LEU	CB-CG-CD2	-5.78	101.18	111.00
1	A	21	ASP	CB-CG-OD1	5.51	123.26	118.30
1	A	123	PHE	CB-CG-CD2	-5.35	117.05	120.80
1	A	87	ARG	NE-CZ-NH1	-5.11	117.75	120.30
2	D	23	ASP	CB-CG-OD2	-5.02	113.78	118.30
2	C	15	ARG	NE-CZ-NH2	-5.00	117.80	120.30

There are no chirality outliers.

There are no planarity outliers.

5.2 Too-close contacts ⓘ

In the following table, the Non-H and H(model) columns list the number of non-hydrogen atoms and hydrogen atoms in the chain respectively. The H(added) column lists the number of hydrogen atoms added and optimized by MolProbity. The Clashes column lists the number of clashes within the asymmetric unit, whereas Symm-Clashes lists symmetry related clashes.

Mol	Chain	Non-H	H(model)	H(added)	Clashes	Symm-Clashes
1	A	1402	0	1354	23	0
1	B	1412	0	1362	15	0
2	C	304	0	237	1	0
2	D	304	0	235	4	0
3	A	28	0	26	10	0
3	B	42	0	39	1	0
4	A	14	0	13	0	0
5	A	50	0	79	2	0
5	B	50	0	79	2	0
6	C	2	0	0	0	0
6	D	2	0	0	0	0
7	C	5	0	0	0	0
7	D	5	0	0	1	0
8	A	179	0	0	1	0
8	B	115	0	0	2	0
8	C	66	0	0	0	0
8	D	47	0	0	1	0
All	All	4027	0	3424	45	0

The all-atom clashscore is defined as the number of clashes found per 1000 atoms (including hydrogen atoms). The all-atom clashscore for this structure is 6.

All (45) close contacts within the same asymmetric unit are listed below, sorted by their clash magnitude.

Atom-1	Atom-2	Interatomic distance (Å)	Clash overlap (Å)
1:A:16:ILE:CG1	3:A:603:NAG:O6	2.02	1.07
1:A:169:CYS:HA	5:A:606:PTY:H291	1.41	1.01
1:A:16:ILE:HG12	3:A:603:NAG:O6	1.63	0.95
1:A:16:ILE:HG13	3:A:603:NAG:O6	1.68	0.92
1:B:169:CYS:HA	5:B:607:PTY:H291	1.56	0.86
1:A:14:LEU:HD23	3:A:603:NAG:H5	1.60	0.82
1:A:20:ARG:HG3	8:A:718:HOH:O	1.83	0.79
2:D:10:HIS:HD2	2:D:11:SER:O	1.67	0.76
1:B:131:ALA:HB2	1:B:162:ARG:HD3	1.70	0.74
1:A:14:LEU:CD2	3:A:603:NAG:H5	2.19	0.73

Continued on next page...

Continued from previous page...

Atom-1	Atom-2	Interatomic distance (Å)	Clash overlap (Å)
1:A:169:CYS:CA	5:A:606:PTY:H291	2.21	0.68
1:B:141:SER:OG	1:B:144:VAL:HG23	1.93	0.68
1:B:177:ILE:HD12	1:B:178:SER:N	2.08	0.67
1:A:14:LEU:HD23	3:A:603:NAG:C5	2.27	0.63
7:D:39:CA:CA	8:D:69:HOH:O	1.78	0.61
1:B:149:GLN:NE2	8:B:727:HOH:O	2.34	0.60
2:D:16:CGU:O	2:D:22:CYS:HB3	2.04	0.56
1:A:21:ASP:HB2	1:A:22:PRO:CD	2.37	0.55
1:B:167:ASP:OD1	1:B:167:ASP:C	2.46	0.54
1:A:119:ASN:ND2	3:A:604:NAG:H83	2.24	0.53
1:A:123:PHE:CE1	1:A:144:VAL:HG22	2.45	0.51
1:B:135:ALA:HB2	1:B:148:LEU:HD11	1.91	0.51
1:B:21:ASP:HB2	1:B:22:PRO:CD	2.39	0.51
2:D:17:CYS:SG	2:D:30:ILE:CD1	2.99	0.50
1:A:16:ILE:CD1	1:A:96:ARG:HG3	2.41	0.50
1:A:131:ALA:HB2	1:A:162:ARG:HD3	1.95	0.49
1:A:163:GLU:O	1:A:167:ASP:HB2	2.13	0.48
1:B:25:VAL:CG1	1:B:45:ASP:HB3	2.43	0.48
1:B:169:CYS:CA	5:B:607:PTY:H291	2.38	0.47
1:A:119:ASN:HD22	3:A:604:NAG:H83	1.79	0.46
1:A:25:VAL:HG13	1:A:45:ASP:HB3	1.96	0.46
1:B:165:LEU:O	1:B:169:CYS:HB3	2.15	0.46
1:A:133:TRP:CD1	1:A:151:LEU:HB3	2.51	0.45
2:D:10:HIS:CD2	2:D:11:SER:O	2.58	0.44
1:A:25:VAL:CG1	1:A:45:ASP:HB3	2.47	0.44
1:A:22:PRO:HG3	1:A:91:PHE:CE1	2.53	0.44
1:A:36:HIS:NE2	1:A:54:GLN:OE1	2.38	0.43
3:B:601:NAG:H83	8:B:701:HOH:O	2.18	0.43
2:C:6:CGU:O	2:C:6:CGU:HG	2.18	0.43
1:B:21:ASP:HB2	1:B:22:PRO:HD2	2.01	0.43
1:B:163:GLU:O	1:B:167:ASP:HB3	2.19	0.42
1:A:28:GLN:HG2	3:A:603:NAG:H62	2.01	0.42
1:B:133:TRP:CD1	1:B:151:LEU:HB3	2.56	0.41
1:B:112:VAL:HB	1:B:165:LEU:HB3	2.03	0.41
1:A:16:ILE:CG1	3:A:603:NAG:HO6	2.28	0.40

There are no symmetry-related clashes.

5.3 Torsion angles

5.3.1 Protein backbone

In the following table, the Percentiles column shows the percent Ramachandran outliers of the chain as a percentile score with respect to all X-ray entries followed by that with respect to entries of similar resolution.

The Analysed column shows the number of residues for which the backbone conformation was analysed, and the total number of residues.

Mol	Chain	Analysed	Favoured	Allowed	Outliers	Percentiles	
1	A	170/193 (88%)	160 (94%)	9 (5%)	1 (1%)	30	9
1	B	171/193 (89%)	164 (96%)	5 (3%)	2 (1%)	16	3
2	C	22/33 (67%)	22 (100%)	0	0	100	100
2	D	22/33 (67%)	21 (96%)	1 (4%)	0	100	100
All	All	385/452 (85%)	367 (95%)	15 (4%)	3 (1%)	24	6

All (3) Ramachandran outliers are listed below:

Mol	Chain	Res	Type
1	B	106	GLU
1	B	47	ASN
1	A	88	THR

5.3.2 Protein sidechains

In the following table, the Percentiles column shows the percent sidechain outliers of the chain as a percentile score with respect to all X-ray entries followed by that with respect to entries of similar resolution.

The Analysed column shows the number of residues for which the sidechain conformation was analysed, and the total number of residues.

Mol	Chain	Analysed	Rotameric	Outliers	Percentiles	
1	A	153/171 (90%)	148 (97%)	5 (3%)	45	17
1	B	154/171 (90%)	144 (94%)	10 (6%)	21	4
2	C	22/22 (100%)	21 (96%)	1 (4%)	34	10
2	D	22/22 (100%)	22 (100%)	0	100	100
All	All	351/386 (91%)	335 (95%)	16 (5%)	33	9

All (16) residues with a non-rotameric sidechain are listed below:

Mol	Chain	Res	Type
1	A	99	LEU
1	A	106	GLU
1	A	114	PHE
1	A	161	LEU
1	A	178	SER
1	B	8	LEU
1	B	20	ARG
1	B	59	PRO
1	B	67	SER
1	B	99	LEU
1	B	106	GLU
1	B	109	ARG
1	B	114	PHE
1	B	139	VAL
1	B	140	THR
2	C	33	ASN

Some sidechains can be flipped to improve hydrogen bonding and reduce clashes. All (8) such sidechains are listed below:

Mol	Chain	Res	Type
1	A	9	GLN
1	A	174	GLN
1	B	54	GLN
1	B	149	GLN
1	B	171	GLN
1	B	174	GLN
2	C	33	ASN
2	D	10	HIS

5.3.3 RNA ⓘ

There are no RNA molecules in this entry.

5.4 Non-standard residues in protein, DNA, RNA chains ⓘ

18 non-standard protein/DNA/RNA residues are modelled in this entry.

In the following table, the Counts columns list the number of bonds (or angles) for which Mogul statistics could be retrieved, the number of bonds (or angles) that are observed in the model and the number of bonds (or angles) that are defined in the chemical component dictionary. The Link column lists molecule types, if any, to which the group is linked. The Z score for a bond length (or angle) is the number of standard deviations the observed value is removed from the expected

value. A bond length (or angle) with $|Z| > 2$ is considered an outlier worth inspection. RMSZ is the root-mean-square of all Z scores of the bond lengths (or angles).

Mol	Type	Chain	Res	Link	Bond lengths			Bond angles		
					Counts	RMSZ	$\# Z > 2$	Counts	RMSZ	$\# Z > 2$
2	CGU	C	14	2,6	4,11,12	1.38	0	4,14,16	1.58	1 (25%)
2	CGU	C	16	2,7	4,11,12	0.60	0	4,14,16	2.76	2 (50%)
2	CGU	C	19	6	4,11,12	0.71	0	4,14,16	0.43	0
2	CGU	C	20	2,7	4,11,12	0.88	0	4,14,16	2.19	2 (50%)
2	CGU	C	25	6	4,11,12	0.55	0	4,14,16	2.03	2 (50%)
2	CGU	C	26	2,7	4,11,12	0.54	0	4,14,16	2.04	2 (50%)
2	CGU	C	29	2,7,6	4,11,12	1.31	0	4,14,16	1.65	1 (25%)
2	CGU	C	6	7	4,11,12	1.16	0	4,14,16	3.71	3 (75%)
2	CGU	C	7	2,7	4,11,12	1.09	0	4,14,16	2.05	1 (25%)
2	CGU	D	14	2,6	4,11,12	0.90	0	4,14,16	1.42	1 (25%)
2	CGU	D	16	2,7	4,11,12	0.77	0	4,14,16	1.06	0
2	CGU	D	19	6	4,11,12	0.70	0	4,14,16	0.82	0
2	CGU	D	20	2,7	4,11,12	0.27	0	4,14,16	2.73	4 (100%)
2	CGU	D	25	6	4,11,12	1.10	0	4,14,16	1.31	1 (25%)
2	CGU	D	26	2,7	4,11,12	1.27	1 (25%)	4,14,16	2.03	2 (50%)
2	CGU	D	29	2,7,6	4,11,12	0.88	0	4,14,16	1.55	1 (25%)
2	CGU	D	6	7	4,11,12	1.08	0	4,14,16	2.30	2 (50%)
2	CGU	D	7	2,7	4,11,12	0.49	0	4,14,16	1.58	1 (25%)

In the following table, the Chirals column lists the number of chiral outliers, the number of chiral centers analysed, the number of these observed in the model and the number defined in the chemical component dictionary. Similar counts are reported in the Torsion and Rings columns. '-' means no outliers of that kind were identified.

Mol	Type	Chain	Res	Link	Chirals	Torsions	Rings
2	CGU	C	14	2,6	-	0/4/14/16	0/0/0/0
2	CGU	C	16	2,7	-	0/4/14/16	0/0/0/0
2	CGU	C	19	6	-	0/4/14/16	0/0/0/0
2	CGU	C	20	2,7	-	0/4/14/16	0/0/0/0
2	CGU	C	25	6	-	0/4/14/16	0/0/0/0
2	CGU	C	26	2,7	-	0/4/14/16	0/0/0/0
2	CGU	C	29	2,7,6	-	0/4/14/16	0/0/0/0
2	CGU	C	6	7	-	0/4/14/16	0/0/0/0
2	CGU	C	7	2,7	-	0/4/14/16	0/0/0/0
2	CGU	D	14	2,6	-	0/4/14/16	0/0/0/0
2	CGU	D	16	2,7	-	0/4/14/16	0/0/0/0

Continued on next page...

Continued from previous page...

Mol	Type	Chain	Res	Link	Chirals	Torsions	Rings
2	CGU	D	19	6	-	0/4/14/16	0/0/0/0
2	CGU	D	20	2,7	-	0/4/14/16	0/0/0/0
2	CGU	D	25	6	-	0/4/14/16	0/0/0/0
2	CGU	D	26	2,7	-	0/4/14/16	0/0/0/0
2	CGU	D	29	2,7,6	-	0/4/14/16	0/0/0/0
2	CGU	D	6	7	-	0/4/14/16	0/0/0/0
2	CGU	D	7	2,7	-	0/4/14/16	0/0/0/0

All (1) bond length outliers are listed below:

Mol	Chain	Res	Type	Atoms	Z	Observed(Å)	Ideal(Å)
2	D	26	CGU	CB-CG	2.23	1.58	1.53

All (26) bond angle outliers are listed below:

Mol	Chain	Res	Type	Atoms	Z	Observed(°)	Ideal(°)
2	C	6	CGU	CB-CG-CD2	-4.81	103.02	112.83
2	C	16	CGU	CB-CG-CD1	-3.81	105.06	112.83
2	C	16	CGU	CB-CG-CD2	-3.77	105.15	112.83
2	C	7	CGU	CB-CG-CD1	-3.24	106.21	112.83
2	C	29	CGU	O-C-CA	-3.04	117.56	125.49
2	D	20	CGU	CB-CA-N	-2.99	102.48	109.91
2	C	14	CGU	CB-CG-CD1	-2.63	107.46	112.83
2	D	25	CGU	O-C-CA	-2.61	118.70	125.49
2	D	7	CGU	CB-CG-CD2	-2.52	107.69	112.83
2	C	20	CGU	CB-CG-CD2	-2.48	107.78	112.83
2	C	6	CGU	O-C-CA	-2.42	119.20	125.49
2	D	6	CGU	O-C-CA	-2.41	119.21	125.49
2	D	14	CGU	O-C-CA	-2.39	119.26	125.49
2	C	26	CGU	CB-CG-CD2	-2.29	108.16	112.83
2	D	26	CGU	CB-CG-CD2	-2.25	108.24	112.83
2	D	20	CGU	CB-CG-CD2	-2.25	108.24	112.83
2	C	25	CGU	O-C-CA	-2.18	119.82	125.49
2	D	29	CGU	O-C-CA	-2.17	119.83	125.49
2	D	20	CGU	O-C-CA	-2.11	120.00	125.49
2	C	26	CGU	CB-CG-CD1	2.65	118.23	112.83
2	D	26	CGU	CB-CA-N	2.78	116.81	109.91
2	C	20	CGU	CB-CG-CD1	3.00	118.95	112.83
2	D	20	CGU	CB-CG-CD1	3.36	119.68	112.83
2	C	25	CGU	CB-CG-CD1	3.39	119.74	112.83
2	D	6	CGU	CB-CG-CD1	3.72	120.42	112.83
2	C	6	CGU	CB-CG-CD1	5.11	123.24	112.83

There are no chirality outliers.

There are no torsion outliers.

There are no ring outliers.

2 monomers are involved in 2 short contacts:

Mol	Chain	Res	Type	Clashes	Symm-Clashes
2	C	6	CGU	1	0
2	D	16	CGU	1	0

5.5 Carbohydrates [i](#)

There are no carbohydrates in this entry.

5.6 Ligand geometry [i](#)

Of 22 ligands modelled in this entry, 14 are monoatomic - leaving 8 for Mogul analysis.

In the following table, the Counts columns list the number of bonds (or angles) for which Mogul statistics could be retrieved, the number of bonds (or angles) that are observed in the model and the number of bonds (or angles) that are defined in the chemical component dictionary. The Link column lists molecule types, if any, to which the group is linked. The Z score for a bond length (or angle) is the number of standard deviations the observed value is removed from the expected value. A bond length (or angle) with $|Z| > 2$ is considered an outlier worth inspection. RMSZ is the root-mean-square of all Z scores of the bond lengths (or angles).

Mol	Type	Chain	Res	Link	Bond lengths			Bond angles		
					Counts	RMSZ	# $ Z > 2$	Counts	RMSZ	# $ Z > 2$
3	NAG	A	603	1	14,14,15	0.72	0	15,19,21	2.94	6 (40%)
3	NAG	A	604	1	14,14,15	1.10	1 (7%)	15,19,21	1.45	4 (26%)
4	NDG	A	605	1	14,14,15	0.67	0	15,19,21	0.91	1 (6%)
5	PTY	A	606	-	48,49,49	1.02	4 (8%)	49,54,54	1.62	9 (18%)
3	NAG	B	600	1	14,14,15	1.17	1 (7%)	15,19,21	1.47	5 (33%)
3	NAG	B	601	1	14,14,15	0.88	1 (7%)	15,19,21	1.50	3 (20%)
3	NAG	B	602	1	14,14,15	0.51	0	15,19,21	0.70	1 (6%)
5	PTY	B	607	-	48,49,49	1.05	3 (6%)	49,54,54	1.38	5 (10%)

In the following table, the Chirals column lists the number of chiral outliers, the number of chiral centers analysed, the number of these observed in the model and the number defined in the chemical component dictionary. Similar counts are reported in the Torsion and Rings columns. '-' means no outliers of that kind were identified.

Mol	Type	Chain	Res	Link	Chirals	Torsions	Rings
3	NAG	A	603	1	-	0/6/23/26	0/1/1/1
3	NAG	A	604	1	-	0/6/23/26	0/1/1/1
4	NDG	A	605	1	-	0/6/23/26	0/1/1/1
5	PTY	A	606	-	-	0/53/53/53	0/0/0/0
3	NAG	B	600	1	-	0/6/23/26	0/1/1/1
3	NAG	B	601	1	-	0/6/23/26	0/1/1/1
3	NAG	B	602	1	-	0/6/23/26	0/1/1/1
5	PTY	B	607	-	-	0/53/53/53	0/0/0/0

All (10) bond length outliers are listed below:

Mol	Chain	Res	Type	Atoms	Z	Observed(Å)	Ideal(Å)
3	B	601	NAG	O3-C3	-2.33	1.37	1.43
5	A	606	PTY	C2-N1	-2.16	1.27	1.45
5	B	607	PTY	C2-N1	-2.00	1.29	1.45
3	B	600	NAG	C8-C7	2.37	1.55	1.50
5	A	606	PTY	P1-O11	2.43	1.70	1.59
3	A	604	NAG	C1-C2	2.52	1.55	1.52
5	A	606	PTY	O4-C30	3.18	1.42	1.33
5	B	607	PTY	O4-C30	3.34	1.43	1.33
5	B	607	PTY	O7-C8	4.22	1.46	1.34
5	A	606	PTY	O7-C8	4.37	1.47	1.34

All (34) bond angle outliers are listed below:

Mol	Chain	Res	Type	Atoms	Z	Observed(°)	Ideal(°)
5	A	606	PTY	C5-C6-C1	-5.09	100.17	112.07
3	A	603	NAG	O3-C3-C4	-5.02	99.03	110.34
5	B	607	PTY	O4-C30-O30	-4.57	111.70	123.49
3	A	603	NAG	C4-C3-C2	-4.20	104.71	111.23
3	A	603	NAG	O3-C3-C2	-3.85	101.48	109.11
5	A	606	PTY	O4-C30-O30	-3.77	113.76	123.49
5	A	606	PTY	O7-C8-O10	-3.66	113.86	123.67
3	B	601	NAG	O6-C6-C5	-3.34	100.31	111.33
5	B	607	PTY	C13-C12-C11	-3.21	101.50	113.29
3	B	601	NAG	C1-O5-C5	-3.15	108.25	112.25
3	A	603	NAG	C6-C5-C4	-2.93	105.80	113.02
5	B	607	PTY	C5-C6-C1	-2.90	105.29	112.07
3	A	604	NAG	O6-C6-C5	-2.66	102.56	111.33
3	B	600	NAG	O7-C7-C8	-2.52	117.44	122.06
5	B	607	PTY	C16-C15-C14	-2.52	101.54	114.53
5	A	606	PTY	C26-C25-C24	-2.33	102.50	114.53
3	B	600	NAG	O4-C4-C3	-2.27	105.22	110.34

Continued on next page...

Continued from previous page...

Mol	Chain	Res	Type	Atoms	Z	Observed(°)	Ideal(°)
3	B	600	NAG	C4-C3-C2	-2.26	107.72	111.23
5	A	606	PTY	C24-C23-C22	-2.25	102.92	114.53
3	B	602	NAG	C2-N2-C7	-2.19	120.23	123.04
3	A	604	NAG	C3-C4-C5	-2.15	106.44	110.20
3	B	601	NAG	O3-C3-C2	-2.10	104.96	109.11
5	A	606	PTY	C23-C22-C21	-2.07	103.86	114.53
5	A	606	PTY	C20-C19-C18	-2.01	104.15	114.53
3	A	604	NAG	C6-C5-C4	2.10	118.19	113.02
3	B	600	NAG	C1-O5-C5	2.12	114.93	112.25
3	B	600	NAG	O3-C3-C4	2.20	115.28	110.34
3	A	603	NAG	C2-N2-C7	2.38	126.09	123.04
4	A	605	NDG	C1-O-C5	2.51	115.44	112.25
3	A	604	NAG	C2-N2-C7	2.77	126.59	123.04
5	A	606	PTY	O4-C30-C31	2.95	120.87	111.90
5	A	606	PTY	C1-O4-C30	3.18	125.74	116.85
5	B	607	PTY	O4-C30-C31	4.14	124.52	111.90
3	A	603	NAG	C1-O5-C5	6.81	120.89	112.25

There are no chirality outliers.

There are no torsion outliers.

There are no ring outliers.

5 monomers are involved in 15 short contacts:

Mol	Chain	Res	Type	Clashes	Symm-Clashes
3	A	603	NAG	8	0
3	A	604	NAG	2	0
5	A	606	PTY	2	0
3	B	601	NAG	1	0
5	B	607	PTY	2	0

5.7 Other polymers [i](#)

There are no such residues in this entry.

5.8 Polymer linkage issues [i](#)

There are no chain breaks in this entry.

6 Fit of model and data ⓘ

6.1 Protein, DNA and RNA chains ⓘ

In the following table, the column labelled ‘#RSRZ> 2’ contains the number (and percentage) of RSRZ outliers, followed by percent RSRZ outliers for the chain as percentile scores relative to all X-ray entries and entries of similar resolution. The OWAB column contains the minimum, median, 95th percentile and maximum values of the occupancy-weighted average B-factor per residue. The column labelled ‘Q< 0.9’ lists the number of (and percentage) of residues with an average occupancy less than 0.9.

Mol	Chain	Analysed	<RSRZ>	#RSRZ>2	OWAB(Å ²)	Q<0.9
1	A	172/193 (89%)	0.08	6 (3%) 48 44	13, 21, 39, 58	4 (2%)
1	B	173/193 (89%)	0.28	13 (7%) 17 15	16, 24, 47, 62	7 (4%)
2	C	24/33 (72%)	-0.20	0 100 100	15, 20, 26, 41	0
2	D	24/33 (72%)	0.29	2 (8%) 14 12	20, 23, 30, 46	0
All	All	393/452 (86%)	0.16	21 (5%) 30 27	13, 22, 42, 62	11 (2%)

All (21) RSRZ outliers are listed below:

Mol	Chain	Res	Type	RSRZ
1	B	8	LEU	9.5
1	B	105	PRO	5.0
1	B	138	GLN	4.9
1	A	177	ILE	4.8
1	B	178	SER	4.8
1	B	179	ALA	4.7
1	A	178	SER	4.6
1	A	105	PRO	4.3
1	B	106	GLU	4.0
1	A	7	GLY	4.0
1	B	107	GLY	3.8
1	B	140	THR	3.5
1	A	20	ARG	3.5
1	B	139	VAL	3.4
1	A	106	GLU	3.4
1	B	177	ILE	3.3
1	B	46	THR	3.2
2	D	33	ASN	3.2
1	B	104	PRO	3.1
2	D	32	GLN	3.0
1	B	59	PRO	2.1

6.2 Non-standard residues in protein, DNA, RNA chains [i](#)

In the following table, the Atoms column lists the number of modelled atoms in the group and the number defined in the chemical component dictionary. LLDF column lists the quality of electron density of the group with respect to its neighbouring residues in protein, DNA or RNA chains. The B-factors column lists the minimum, median, 95th percentile and maximum values of B factors of atoms in the group. The column labelled 'Q< 0.9' lists the number of atoms with occupancy less than 0.9.

Mol	Type	Chain	Res	Atoms	RSCC	RSR	LLDF	B-factors(Å ²)	Q<0.9
2	CGU	C	7	12/13	0.98	0.07	-	12,13,16,17	0
2	CGU	D	20	12/13	0.94	0.07	-	19,24,28,29	0
2	CGU	D	7	12/13	0.98	0.05	-	18,19,21,22	0
2	CGU	D	16	12/13	0.96	0.07	-	18,20,20,21	0
2	CGU	C	6	12/13	0.97	0.06	-	14,15,18,20	0
2	CGU	C	14	12/13	0.93	0.08	-	19,23,34,34	0
2	CGU	D	19	12/13	0.91	0.11	-	27,31,36,38	0
2	CGU	C	19	12/13	0.93	0.13	-	24,26,29,34	0
2	CGU	C	25	12/13	0.97	0.06	-	13,15,18,19	0
2	CGU	D	26	12/13	0.96	0.08	-	17,18,20,21	0
2	CGU	D	29	12/13	0.96	0.07	-	14,20,23,24	0
2	CGU	D	6	12/13	0.91	0.09	-	20,21,27,27	0
2	CGU	C	16	12/13	0.98	0.06	-	14,16,18,18	0
2	CGU	D	25	12/13	0.97	0.06	-	19,19,23,23	0
2	CGU	C	26	12/13	0.98	0.08	-	12,15,17,19	0
2	CGU	C	20	12/13	0.96	0.06	-	18,22,25,29	0
2	CGU	C	29	12/13	0.97	0.08	-	13,15,19,19	0
2	CGU	D	14	12/13	0.94	0.07	-	19,24,28,29	0

6.3 Carbohydrates [i](#)

There are no carbohydrates in this entry.

6.4 Ligands [i](#)

In the following table, the Atoms column lists the number of modelled atoms in the group and the number defined in the chemical component dictionary. LLDF column lists the quality of electron density of the group with respect to its neighbouring residues in protein, DNA or RNA chains. The B-factors column lists the minimum, median, 95th percentile and maximum values of B factors of atoms in the group. The column labelled 'Q< 0.9' lists the number of atoms with occupancy less than 0.9.

Mol	Type	Chain	Res	Atoms	RSCC	RSR	LLDF	B-factors(Å ²)	Q<0.9
3	NAG	A	604	14/15	0.88	0.19	7.94	30,38,43,44	0

Continued on next page...

Continued from previous page...

Mol	Type	Chain	Res	Atoms	RSCC	RSR	LLDF	B-factors(\AA^2)	Q<0.9
3	NAG	B	601	14/15	0.79	0.21	5.39	34,40,44,45	0
5	PTY	B	607	50/50	0.88	0.17	4.23	21,31,40,40	0
3	NAG	A	603	14/15	0.88	0.17	4.07	32,40,53,56	0
5	PTY	A	606	50/50	0.84	0.17	2.84	18,30,38,43	0
4	NDG	A	605	14/15	0.61	0.24	2.81	43,57,61,61	0
3	NAG	B	600	14/15	0.96	0.06	-1.27	15,18,22,24	0
7	CA	C	37	1/1	1.00	0.07	-	15,15,15,15	0
6	MG	D	34	1/1	0.98	0.04	-	21,21,21,21	0
7	CA	D	39	1/1	0.96	0.09	-	34,34,34,34	0
7	CA	C	38	1/1	0.99	0.05	-	18,18,18,18	0
7	CA	D	36	1/1	0.99	0.07	-	19,19,19,19	0
7	CA	D	35	1/1	0.99	0.05	-	19,19,19,19	0
6	MG	D	40	1/1	0.93	0.06	-	33,33,33,33	0
7	CA	C	35	1/1	1.00	0.09	-	14,14,14,14	0
7	CA	C	36	1/1	1.00	0.09	-	15,15,15,15	0
7	CA	D	37	1/1	1.00	0.05	-	18,18,18,18	0
7	CA	D	38	1/1	0.98	0.05	-	20,20,20,20	0
7	CA	C	39	1/1	0.97	0.07	-	33,33,33,33	0
6	MG	C	40	1/1	0.95	0.08	-	31,31,31,31	0
6	MG	C	34	1/1	0.99	0.04	-	15,15,15,15	0
3	NAG	B	602	14/15	0.73	0.22	-	52,55,59,64	0

6.5 Other polymers [i](#)

There are no such residues in this entry.