



Full wwPDB X-ray Structure Validation Report ⓘ

Oct 2, 2016 – 04:48 AM EDT

PDB ID : 5JTD
Title : Crystal structure of the Ru(bpy)2PhenA functionalized P450 BM3 L407C heme domain mutant in complex with DMSO.
Authors : Kloos, M.
Deposited on : 2016-05-09
Resolution : 1.50 Å(reported)

This is a Full wwPDB X-ray Structure Validation Report for a publicly released PDB entry.

We welcome your comments at validation@mail.wwpdb.org

A user guide is available at

<http://wwpdb.org/validation/2016/XrayValidationReportHelp>

with specific help available everywhere you see the ⓘ symbol.

The following versions of software and data (see [references ⓘ](#)) were used in the production of this report:

MolProbity : 4.02b-467
Mogul : 1.7.1 (RC1), CSD as537be (2016)
Xtriage (Phenix) : 1.9-1692
EDS : rb-20027939
Percentile statistics : 20151230.v01 (using entries in the PDB archive December 30th 2015)
Refmac : 5.8.0135
CCP4 : 6.5.0
Ideal geometry (proteins) : Engh & Huber (2001)
Ideal geometry (DNA, RNA) : Parkinson et al. (1996)
Validation Pipeline (wwPDB-VP) : rb-20027939

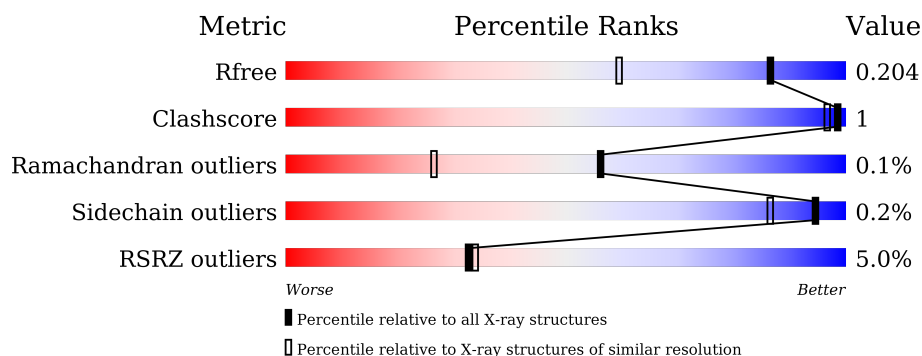
1 Overall quality at a glance

The following experimental techniques were used to determine the structure:

X-RAY DIFFRACTION

The reported resolution of this entry is 1.50 Å.

Percentile scores (ranging between 0-100) for global validation metrics of the entry are shown in the following graphic. The table shows the number of entries on which the scores are based.



Metric	Whole archive (#Entries)	Similar resolution (#Entries, resolution range(Å))
R_{free}	91344	2072 (1.50-1.50)
Clashscore	102246	2274 (1.50-1.50)
Ramachandran outliers	100387	2218 (1.50-1.50)
Sidechain outliers	100360	2216 (1.50-1.50)
RSRZ outliers	91569	2075 (1.50-1.50)

The table below summarises the geometric issues observed across the polymeric chains and their fit to the electron density. The red, orange, yellow and green segments on the lower bar indicate the fraction of residues that contain outliers for ≥ 3 , 2, 1 and 0 types of geometric quality criteria. A grey segment represents the fraction of residues that are not modelled. The numeric value for each fraction is indicated below the corresponding segment, with a dot representing fractions $\leq 5\%$. The upper red bar (where present) indicates the fraction of residues that have poor fit to the electron density. The numeric value is given above the bar.

Mol	Chain	Length	Quality of chain
1	A	469	<div> <div>5%</div> <div> <div></div> <div>96%</div> <div>..</div> </div> </div>
1	B	469	<div> <div>5%</div> <div> <div></div> <div>96%</div> <div>..</div> </div> </div>

The following table lists non-polymeric compounds, carbohydrate monomers and non-standard residues in protein, DNA, RNA chains that are outliers for geometric or electron-density-fit criteria:

Mol	Type	Chain	Res	Chirality	Geometry	Clashes	Electron density
3	DMS	A	504	-	-	-	X
3	DMS	B	504	-	-	-	X
4	RU8	A	503	-	-	-	X
4	RU8	B	503	-	-	-	X

2 Entry composition

There are 5 unique types of molecules in this entry. The entry contains 8328 atoms, of which 0 are hydrogens and 0 are deuteriums.

In the tables below, the ZeroOcc column contains the number of atoms modelled with zero occupancy, the AltConf column contains the number of residues with at least one atom in alternate conformation and the Trace column contains the number of residues modelled with at most 2 atoms.

- Molecule 1 is a protein called Bifunctional cytochrome P450/NADPH-P450 reductase.

Mol	Chain	Residues	Atoms					ZeroOcc	AltConf	Trace
1	A	458	Total	C	N	O	S	0	8	0
			3732	2387	631	694	20			
1	B	458	Total	C	N	O	S	0	4	0
			3709	2371	631	688	19			

There are 14 discrepancies between the modelled and reference sequences:

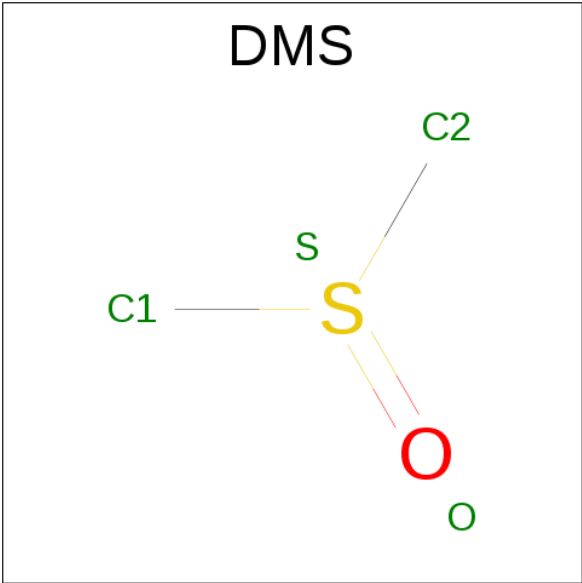
Chain	Residue	Modelled	Actual	Comment	Reference
A	407	CYS	LEU	engineered mutation	UNP P14779
A	464	HIS	-	expression tag	UNP P14779
A	465	HIS	-	expression tag	UNP P14779
A	466	HIS	-	expression tag	UNP P14779
A	467	HIS	-	expression tag	UNP P14779
A	468	HIS	-	expression tag	UNP P14779
A	469	HIS	-	expression tag	UNP P14779
B	407	CYS	LEU	engineered mutation	UNP P14779
B	464	HIS	-	expression tag	UNP P14779
B	465	HIS	-	expression tag	UNP P14779
B	466	HIS	-	expression tag	UNP P14779
B	467	HIS	-	expression tag	UNP P14779
B	468	HIS	-	expression tag	UNP P14779
B	469	HIS	-	expression tag	UNP P14779

- Molecule 2 is PROTOPORPHYRIN IX CONTAINING FE (three-letter code: HEM) (formula: $C_{34}H_{32}FeN_4O_4$).



Mol	Chain	Residues	Atoms					ZeroOcc	AltConf
2	A	1	Total 43	C 34	Fe 1	N 4	O 4	0	0
2	B	1	Total 43	C 34	Fe 1	N 4	O 4	0	0

- Molecule 3 is DIMETHYL SULFOXIDE (three-letter code: DMS) (formula: C₂H₆OS).



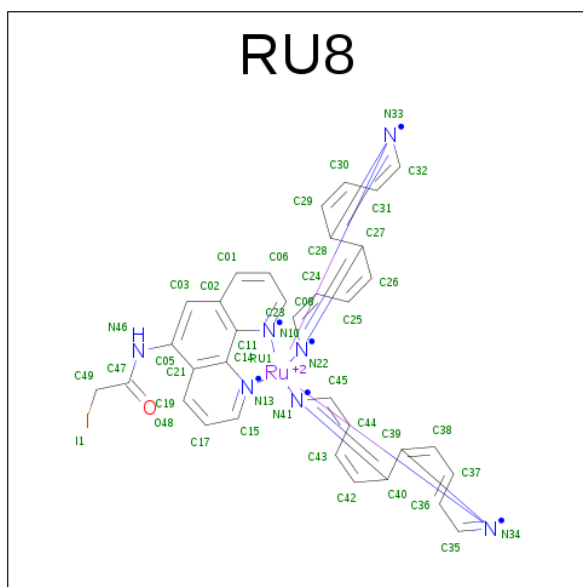
Mol	Chain	Residues	Atoms				ZeroOcc	AltConf
3	A	1	Total	C	O	S	0	0
			4	2	1	1		
3	A	1	Total	C	O	S	0	0
			4	2	1	1		

Continued on next page...

Continued from previous page...

Mol	Chain	Residues	Atoms				ZeroOcc	AltConf
3	B	1	Total	C	O	S	0	0
			4	2	1	1		
3	B	1	Total	C	O	S	0	0
			4	2	1	1		

- Molecule 4 is bis(2,2'-bipyridine-kappa 2 N 1 ,N 1') [2-iodo-N-(1,10-phenanthrolin-5-yl-kappa 2 N 1 ,N 10)acetamide]ruthenium(2+) (three-letter code: RU8) (formula: C₃₄H₂₆IN₇ORu).



Mol	Chain	Residues	Atoms					ZeroOcc	AltConf
4	A	1	Total	C	N	O	Ru	0	0
			43	34	7	1	1		
4	B	1	Total	C	N	O	Ru	0	0
			43	34	7	1	1		

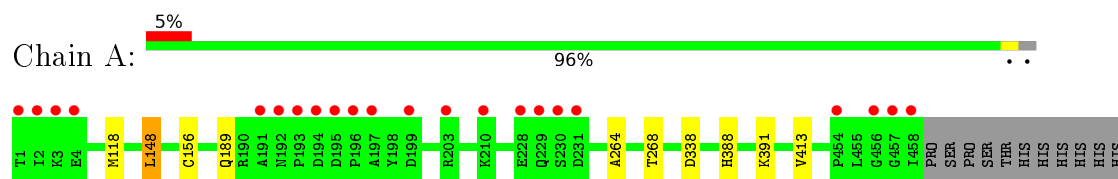
- Molecule 5 is water.

Mol	Chain	Residues	Atoms		ZeroOcc	AltConf
5	A	358	Total	O	0	1
			359	359		
5	B	340	Total	O	0	0
			340	340		

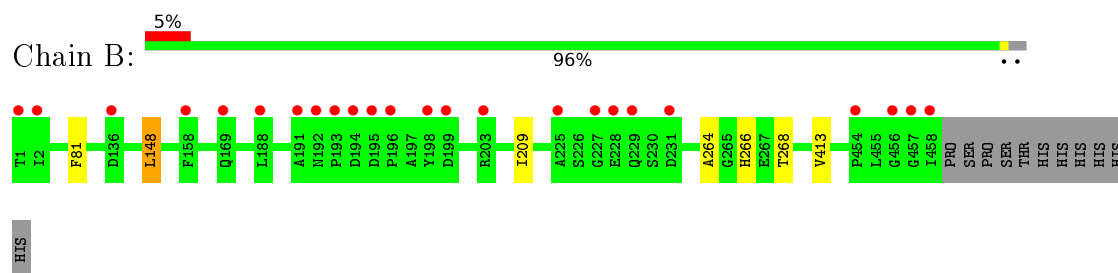
3 Residue-property plots [i](#)

These plots are drawn for all protein, RNA and DNA chains in the entry. The first graphic for a chain summarises the proportions of errors displayed in the second graphic. The second graphic shows the sequence view annotated by issues in geometry and electron density. Residues are color-coded according to the number of geometric quality criteria for which they contain at least one outlier: green = 0, yellow = 1, orange = 2 and red = 3 or more. A red dot above a residue indicates a poor fit to the electron density ($RSRZ > 2$). Stretches of 2 or more consecutive residues without any outlier are shown as a green connector. Residues present in the sample, but not in the model, are shown in grey.

- Molecule 1: Bifunctional cytochrome P450/NADPH-P450 reductase



- Molecule 1: Bifunctional cytochrome P450/NADPH-P450 reductase



4 Data and refinement statistics

Property	Value	Source
Space group	P 1 21 1	Depositor
Cell constants a, b, c, α , β , γ	58.69 Å 145.39 Å 62.90 Å 90.00° 97.08° 90.00°	Depositor
Resolution (Å)	47.36 – 1.50 47.36 – 1.40	Depositor EDS
% Data completeness (in resolution range)	96.8 (47.36-1.50) 89.7 (47.36-1.40)	Depositor EDS
R_{merge}	0.04	Depositor
R_{sym}	(Not available)	Depositor
$\langle I/\sigma(I) \rangle$ ¹	1.22 (at 1.40 Å)	Xtriage
Refinement program	REFMAC	Depositor
R, R_{free}	0.173 , 0.198 0.182 , 0.204	Depositor DCC
R_{free} test set	8058 reflections (5.26%)	DCC
Wilson B-factor (Å ²)	17.3	Xtriage
Anisotropy	0.401	Xtriage
Bulk solvent k_{sol} (e/Å ³), B_{sol} (Å ²)	0.36 , 38.0	EDS
L-test for twinning ²	$\langle L \rangle = 0.48$, $\langle L^2 \rangle = 0.31$	Xtriage
Estimated twinning fraction	No twinning to report.	Xtriage
F_o, F_c correlation	0.97	EDS
Total number of atoms	8328	wwPDB-VP
Average B, all atoms (Å ²)	23.0	wwPDB-VP

Xtriage's analysis on translational NCS is as follows: *The largest off-origin peak in the Patterson function is 5.68% of the height of the origin peak. No significant pseudotranslation is detected.*

¹Intensities estimated from amplitudes.

²Theoretical values of $\langle |L| \rangle$, $\langle L^2 \rangle$ for acentric reflections are 0.5, 0.333 respectively for untwinned datasets, and 0.375, 0.2 for perfectly twinned datasets.

5 Model quality

5.1 Standard geometry

Bond lengths and bond angles in the following residue types are not validated in this section: HEM, RU8, DMS

The Z score for a bond length (or angle) is the number of standard deviations the observed value is removed from the expected value. A bond length (or angle) with $|Z| > 5$ is considered an outlier worth inspection. RMSZ is the root-mean-square of all Z scores of the bond lengths (or angles).

Mol	Chain	Bond lengths		Bond angles	
		RMSZ	# Z >5	RMSZ	# Z >5
1	A	0.51	0/3841	0.71	1/5189 (0.0%)
1	B	0.52	0/3807	0.71	0/5145
All	All	0.52	0/7648	0.71	1/10334 (0.0%)

There are no bond length outliers.

All (1) bond angle outliers are listed below:

Mol	Chain	Res	Type	Atoms	Z	Observed(°)	Ideal(°)
1	A	338	ASP	CB-CG-OD1	5.92	123.63	118.30

There are no chirality outliers.

There are no planarity outliers.

5.2 Too-close contacts

In the following table, the Non-H and H(model) columns list the number of non-hydrogen atoms and hydrogen atoms in the chain respectively. The H(added) column lists the number of hydrogen atoms added and optimized by MolProbity. The Clashes column lists the number of clashes within the asymmetric unit, whereas Symm-Clashes lists symmetry related clashes.

Mol	Chain	Non-H	H(model)	H(added)	Clashes	Symm-Clashes
1	A	3732	0	3730	8	0
1	B	3709	0	3695	4	0
2	A	43	0	30	1	0
2	B	43	0	30	1	0
3	A	8	0	12	3	0
3	B	8	0	12	2	0
4	A	43	0	24	0	0
4	B	43	0	24	0	0

Continued on next page...

Continued from previous page...

Mol	Chain	Non-H	H(model)	H(added)	Clashes	Symm-Clashes
5	A	359	0	0	1	0
5	B	340	0	0	0	0
All	All	8328	0	7557	14	0

The all-atom clashscore is defined as the number of clashes found per 1000 atoms (including hydrogen atoms). The all-atom clashscore for this structure is 1.

All (14) close contacts within the same asymmetric unit are listed below, sorted by their clash magnitude.

Atom-1	Atom-2	Interatomic distance (Å)	Clash overlap (Å)
1:B:268:THR:HG21	3:B:502:DMS:H11	1.81	0.62
1:A:388:HIS:HA	1:A:391[A]:LYS:HE2	1.90	0.53
1:A:118[A]:MET:HE1	1:A:156:CYS:HA	1.89	0.53
2:B:501:HEM:HBC2	2:B:501:HEM:HMC1	1.94	0.49
1:A:268:THR:CG2	3:A:502:DMS:H22	2.44	0.48
1:A:268:THR:HG21	3:A:502:DMS:H22	1.95	0.46
1:A:118[A]:MET:HE3	1:A:118[A]:MET:HB2	1.75	0.46
2:A:501:HEM:HMC1	2:A:501:HEM:HBC2	1.96	0.46
1:A:264:ALA:HA	3:A:502:DMS:H23	1.97	0.46
1:A:189:GLN:HA	5:A:637:HOH:O	2.16	0.45
1:B:148:LEU:HD21	1:B:413:VAL:HG21	1.97	0.45
1:B:264:ALA:HA	3:B:502:DMS:H12	1.98	0.45
1:B:81:PHE:HB3	1:B:209:ILE:HG12	2.02	0.42
1:A:148:LEU:HD21	1:A:413:VAL:HG21	2.04	0.40

There are no symmetry-related clashes.

5.3 Torsion angles [i](#)

5.3.1 Protein backbone [i](#)

In the following table, the Percentiles column shows the percent Ramachandran outliers of the chain as a percentile score with respect to all X-ray entries followed by that with respect to entries of similar resolution.

The Analysed column shows the number of residues for which the backbone conformation was analysed, and the total number of residues.

Mol	Chain	Analysed	Favoured	Allowed	Outliers	Percentiles
1	A	464/469 (99%)	450 (97%)	14 (3%)	0	100 100

Continued on next page...

Continued from previous page...

Mol	Chain	Analysed	Favoured	Allowed	Outliers	Percentiles	
1	B	460/469 (98%)	450 (98%)	9 (2%)	1 (0%)	52	25
All	All	924/938 (98%)	900 (97%)	23 (2%)	1 (0%)	56	26

All (1) Ramachandran outliers are listed below:

Mol	Chain	Res	Type
1	B	266	HIS

5.3.2 Protein sidechains ⓘ

In the following table, the Percentiles column shows the percent sidechain outliers of the chain as a percentile score with respect to all X-ray entries followed by that with respect to entries of similar resolution.

The Analysed column shows the number of residues for which the sidechain conformation was analysed, and the total number of residues.

Mol	Chain	Analysed	Rotameric	Outliers	Percentiles	
1	A	408/411 (99%)	407 (100%)	1 (0%)	95	87
1	B	404/411 (98%)	403 (100%)	1 (0%)	95	87
All	All	812/822 (99%)	810 (100%)	2 (0%)	94	87

All (2) residues with a non-rotameric sidechain are listed below:

Mol	Chain	Res	Type
1	A	148	LEU
1	B	148	LEU

Some sidechains can be flipped to improve hydrogen bonding and reduce clashes. All (4) such sidechains are listed below:

Mol	Chain	Res	Type
1	A	109	GLN
1	A	239	ASN
1	B	186	ASN
1	B	239	ASN

5.3.3 RNA ⓘ

There are no RNA molecules in this entry.

5.4 Non-standard residues in protein, DNA, RNA chains ⓘ

There are no non-standard protein/DNA/RNA residues in this entry.

5.5 Carbohydrates ⓘ

There are no carbohydrates in this entry.

5.6 Ligand geometry ⓘ

8 ligands are modelled in this entry.

In the following table, the Counts columns list the number of bonds (or angles) for which Mogul statistics could be retrieved, the number of bonds (or angles) that are observed in the model and the number of bonds (or angles) that are defined in the chemical component dictionary. The Link column lists molecule types, if any, to which the group is linked. The Z score for a bond length (or angle) is the number of standard deviations the observed value is removed from the expected value. A bond length (or angle) with $|Z| > 2$ is considered an outlier worth inspection. RMSZ is the root-mean-square of all Z scores of the bond lengths (or angles).

Mol	Type	Chain	Res	Link	Bond lengths			Bond angles		
					Counts	RMSZ	$\# Z > 2$	Counts	RMSZ	$\# Z > 2$
2	HEM	A	501	1,3	24,50,50	1.03	2 (8%)	16,82,82	1.52	2 (12%)
3	DMS	A	502	2	3,3,3	1.24	0	3,3,3	1.66	1 (33%)
4	RU8	A	503	1	45,52,53	4.01	25 (55%)	51,87,88	4.36	28 (54%)
3	DMS	A	504	-	3,3,3	0.41	0	3,3,3	0.17	0
2	HEM	B	501	1,3	24,50,50	1.05	2 (8%)	16,82,82	1.44	3 (18%)
3	DMS	B	502	2	3,3,3	1.22	0	3,3,3	1.04	0
4	RU8	B	503	1	45,52,53	4.03	26 (57%)	51,87,88	4.46	30 (58%)
3	DMS	B	504	-	3,3,3	0.29	0	3,3,3	0.66	0

In the following table, the Chirals column lists the number of chiral outliers, the number of chiral centers analysed, the number of these observed in the model and the number defined in the chemical component dictionary. Similar counts are reported in the Torsion and Rings columns. '-' means no outliers of that kind were identified.

Mol	Type	Chain	Res	Link	Chirals	Torsions	Rings
2	HEM	A	501	1,3	-	0/6/54/54	0/0/8/8
3	DMS	A	502	2	-	0/0/0/0	0/0/0/0
4	RU8	A	503	1	-	0/4/116/118	0/10/10/10
3	DMS	A	504	-	-	0/0/0/0	0/0/0/0
2	HEM	B	501	1,3	-	0/6/54/54	0/0/8/8
3	DMS	B	502	2	-	0/0/0/0	0/0/0/0

Continued on next page...

Continued from previous page...

Mol	Type	Chain	Res	Link	Chirals	Torsions	Rings
4	RU8	B	503	1	-	0/4/116/118	0/10/10/10
3	DMS	B	504	-	-	0/0/0/0	0/0/0/0

All (55) bond length outliers are listed below:

Mol	Chain	Res	Type	Atoms	Z	Observed(Å)	Ideal(Å)
4	A	503	RU8	C35-N34	-10.02	1.33	1.49
4	B	503	RU8	C45-N41	-9.83	1.34	1.49
4	B	503	RU8	C32-N33	-9.71	1.34	1.49
4	A	503	RU8	C23-N22	-9.40	1.34	1.49
4	B	503	RU8	C35-N34	-9.35	1.34	1.49
4	A	503	RU8	C45-N41	-9.19	1.35	1.49
4	A	503	RU8	C32-N33	-9.12	1.35	1.49
4	B	503	RU8	C23-N22	-8.65	1.35	1.49
4	B	503	RU8	C29-C28	-5.74	1.40	1.53
4	B	503	RU8	C42-C40	-5.61	1.40	1.53
4	B	503	RU8	C43-C42	-5.53	1.38	1.53
4	A	503	RU8	C42-C40	-5.52	1.40	1.53
4	A	503	RU8	C26-C27	-5.41	1.41	1.53
4	A	503	RU8	C38-C39	-5.38	1.41	1.53
4	B	503	RU8	C38-C39	-5.36	1.41	1.53
4	A	503	RU8	C43-C42	-5.34	1.38	1.53
4	A	503	RU8	C29-C28	-5.23	1.41	1.53
4	B	503	RU8	C37-C38	-5.15	1.39	1.53
4	A	503	RU8	C37-C38	-5.11	1.39	1.53
4	B	503	RU8	C26-C27	-5.08	1.41	1.53
4	B	503	RU8	C30-C29	-5.07	1.39	1.53
4	A	503	RU8	C30-C29	-5.06	1.39	1.53
4	A	503	RU8	C25-C26	-4.96	1.39	1.53
4	B	503	RU8	C25-C26	-4.57	1.40	1.53
2	B	501	HEM	C3B-C2B	-3.49	1.35	1.40
4	B	503	RU8	C45-C44	-3.41	1.38	1.51
4	A	503	RU8	C23-C24	-3.18	1.39	1.51
4	B	503	RU8	C37-C36	-3.00	1.39	1.51
4	A	503	RU8	C24-C25	-2.99	1.39	1.51
4	A	503	RU8	C45-C44	-2.98	1.40	1.51
4	B	503	RU8	C24-C25	-2.96	1.39	1.51
4	B	503	RU8	C32-C31	-2.94	1.40	1.51
4	B	503	RU8	C30-C31	-2.92	1.40	1.51
4	A	503	RU8	C32-C31	-2.85	1.40	1.51
4	B	503	RU8	C43-C44	-2.83	1.40	1.51
4	A	503	RU8	C37-C36	-2.83	1.40	1.51

Continued on next page...

Continued from previous page...

Mol	Chain	Res	Type	Atoms	Z	Observed(Å)	Ideal(Å)
4	B	503	RU8	C23-C24	-2.82	1.40	1.51
4	B	503	RU8	C35-C36	-2.82	1.40	1.51
4	A	503	RU8	C43-C44	-2.78	1.40	1.51
4	A	503	RU8	C30-C31	-2.78	1.40	1.51
2	A	501	HEM	C3B-C2B	-2.76	1.36	1.40
4	A	503	RU8	C35-C36	-2.67	1.41	1.51
2	A	501	HEM	C1B-NB	-2.50	1.33	1.36
2	B	501	HEM	C1B-NB	-2.23	1.33	1.36
4	B	503	RU8	C47-N46	-2.04	1.32	1.35
4	A	503	RU8	C11-N10	2.01	1.40	1.37
4	B	503	RU8	C06-C01	2.41	1.42	1.36
4	A	503	RU8	C06-C01	2.49	1.42	1.36
4	B	503	RU8	C11-N10	2.51	1.41	1.37
4	B	503	RU8	C05-C21	3.20	1.49	1.43
4	A	503	RU8	C05-C21	3.30	1.49	1.43
4	B	503	RU8	C21-C14	3.34	1.46	1.41
4	A	503	RU8	C02-C11	4.11	1.48	1.41
4	A	503	RU8	C21-C14	4.15	1.48	1.41
4	B	503	RU8	C02-C11	4.34	1.48	1.41

All (64) bond angle outliers are listed below:

Mol	Chain	Res	Type	Atoms	Z	Observed(°)	Ideal(°)
2	A	501	HEM	CBD-CAD-C3D	-3.05	107.11	112.47
4	B	503	RU8	C21-C05-N46	-2.76	113.27	118.42
3	A	502	DMS	O-S-C1	-2.68	91.75	106.64
2	B	501	HEM	CBD-CAD-C3D	-2.48	108.11	112.47
2	B	501	HEM	CMA-C3A-C4A	-2.41	124.21	128.31
4	B	503	RU8	C21-C14-N13	-2.38	120.23	122.76
4	B	503	RU8	C17-C15-N13	-2.34	119.15	122.70
2	A	501	HEM	CMA-C3A-C4A	-2.29	124.41	128.31
2	B	501	HEM	C3B-C4B-NB	-2.20	106.36	109.21
4	A	503	RU8	C08-C06-C01	2.16	122.41	119.40
4	B	503	RU8	C11-C14-N13	2.22	119.23	116.56
4	A	503	RU8	C15-C17-C19	2.22	122.49	119.40
4	A	503	RU8	C14-C11-N10	2.34	119.38	116.56
4	A	503	RU8	C15-N13-C14	2.84	121.20	117.54
4	B	503	RU8	C08-C06-C01	2.96	123.52	119.40
4	B	503	RU8	C15-N13-C14	3.64	122.23	117.54
4	B	503	RU8	C43-C42-C40	3.66	118.16	111.20
4	B	503	RU8	C36-C35-N34	3.72	119.16	112.97
4	A	503	RU8	C44-C45-N41	3.72	119.16	112.97

Continued on next page...

Continued from previous page...

Mol	Chain	Res	Type	Atoms	Z	Observed(°)	Ideal(°)
4	B	503	RU8	C44-C43-C42	3.76	119.22	111.44
4	B	503	RU8	C37-C38-C39	3.78	118.38	111.20
4	A	503	RU8	C36-C37-C38	3.79	119.28	111.44
4	B	503	RU8	C40-C39-N34	3.88	114.89	109.12
4	B	503	RU8	C31-C32-N33	3.88	119.42	112.97
4	B	503	RU8	C44-C45-N41	3.93	119.51	112.97
4	B	503	RU8	C24-C25-C26	3.95	119.61	111.44
4	A	503	RU8	C37-C38-C39	4.00	118.81	111.20
4	A	503	RU8	C43-C42-C40	4.01	118.83	111.20
4	A	503	RU8	C31-C30-C29	4.02	119.75	111.44
4	B	503	RU8	C30-C29-C28	4.04	118.88	111.20
4	A	503	RU8	C44-C43-C42	4.07	119.85	111.44
4	A	503	RU8	C24-C25-C26	4.07	119.86	111.44
4	A	503	RU8	C25-C26-C27	4.12	119.03	111.20
4	A	503	RU8	C36-C35-N34	4.17	119.91	112.97
4	A	503	RU8	C30-C29-C28	4.24	119.27	111.20
4	B	503	RU8	C36-C37-C38	4.25	120.23	111.44
4	B	503	RU8	C31-C30-C29	4.28	120.30	111.44
4	A	503	RU8	C24-C23-N22	4.36	120.22	112.97
4	B	503	RU8	C23-C24-C25	4.44	118.32	111.43
4	B	503	RU8	C28-C27-N22	4.45	115.76	109.12
4	B	503	RU8	C25-C26-C27	4.62	119.98	111.20
4	A	503	RU8	C31-C32-N33	4.72	120.83	112.97
4	A	503	RU8	C40-C39-N34	4.74	116.19	109.12
4	B	503	RU8	C24-C23-N22	4.75	120.87	112.97
4	A	503	RU8	C32-C31-C30	4.90	119.03	111.43
4	A	503	RU8	C23-C24-C25	4.97	119.13	111.43
4	B	503	RU8	C32-C31-C30	5.01	119.21	111.43
4	A	503	RU8	C28-C27-N22	5.04	116.63	109.12
4	B	503	RU8	C39-C40-N41	5.26	116.95	109.12
4	A	503	RU8	C27-C28-N33	5.30	117.01	109.12
4	A	503	RU8	C39-C40-N41	5.33	117.06	109.12
4	A	503	RU8	C45-C44-C43	5.45	119.89	111.43
4	B	503	RU8	C45-C44-C43	6.04	120.79	111.43
4	B	503	RU8	C35-C36-C37	6.06	120.83	111.43
4	A	503	RU8	C35-C36-C37	6.41	121.38	111.43
4	B	503	RU8	C27-C28-N33	6.48	118.78	109.12
4	A	503	RU8	C35-N34-C39	9.61	120.07	109.55
4	B	503	RU8	C45-N41-C40	10.57	121.12	109.55
4	A	503	RU8	C32-N33-C28	10.66	121.22	109.55
4	B	503	RU8	C35-N34-C39	10.77	121.34	109.55
4	A	503	RU8	C45-N41-C40	11.67	122.33	109.55

Continued on next page...

Continued from previous page...

Mol	Chain	Res	Type	Atoms	Z	Observed($^{\circ}$)	Ideal($^{\circ}$)
4	A	503	RU8	C23-N22-C27	11.79	122.45	109.55
4	B	503	RU8	C23-N22-C27	11.82	122.49	109.55
4	B	503	RU8	C32-N33-C28	12.28	123.00	109.55

There are no chirality outliers.

There are no torsion outliers.

There are no ring outliers.

4 monomers are involved in 7 short contacts:

Mol	Chain	Res	Type	Clashes	Symm-Clashes
2	A	501	HEM	1	0
3	A	502	DMS	3	0
2	B	501	HEM	1	0
3	B	502	DMS	2	0

5.7 Other polymers [i](#)

There are no such residues in this entry.

5.8 Polymer linkage issues [i](#)

There are no chain breaks in this entry.

6 Fit of model and data ⓘ

6.1 Protein, DNA and RNA chains ⓘ

In the following table, the column labelled ‘#RSRZ> 2’ contains the number (and percentage) of RSRZ outliers, followed by percent RSRZ outliers for the chain as percentile scores relative to all X-ray entries and entries of similar resolution. The OWAB column contains the minimum, median, 95th percentile and maximum values of the occupancy-weighted average B-factor per residue. The column labelled ‘Q< 0.9’ lists the number of (and percentage) of residues with an average occupancy less than 0.9.

Mol	Chain	Analysed	<RSRZ>	#RSRZ>2	OWAB(Å ²)	Q<0.9
1	A	458/469 (97%)	-0.07	22 (4%) 34 35	12, 19, 47, 69	0
1	B	458/469 (97%)	-0.08	24 (5%) 31 32	12, 19, 43, 59	0
All	All	916/938 (97%)	-0.07	46 (5%) 32 34	12, 19, 44, 69	0

All (46) RSRZ outliers are listed below:

Mol	Chain	Res	Type	RSRZ
1	A	1	THR	10.6
1	A	2	ILE	9.0
1	A	191	ALA	7.4
1	B	458	ILE	6.9
1	B	2	ILE	6.4
1	B	1	THR	6.3
1	B	231	ASP	6.2
1	B	193	PRO	6.0
1	A	458	ILE	5.9
1	B	191	ALA	4.8
1	A	203	ARG	4.4
1	B	203	ARG	4.1
1	B	227	GLY	4.0
1	A	194	ASP	3.8
1	A	456	GLY	3.6
1	A	230	SER	3.5
1	B	198	TYR	3.4
1	A	231	ASP	3.4
1	A	199	ASP	3.3
1	B	229	GLN	3.2
1	A	196	PRO	3.1
1	A	195	ASP	3.1
1	A	3	LYS	3.0
1	A	457	GLY	3.0

Continued on next page...

Continued from previous page...

Mol	Chain	Res	Type	RSRZ
1	A	4	GLU	2.9
1	A	228	GLU	2.9
1	A	193	PRO	2.8
1	A	192	ASN	2.8
1	B	169	GLN	2.7
1	B	199	ASP	2.7
1	B	456	GLY	2.6
1	A	229	GLN	2.6
1	A	197	ALA	2.6
1	B	228	GLU	2.6
1	A	454	PRO	2.5
1	B	136	ASP	2.4
1	B	195	ASP	2.4
1	B	225	ALA	2.4
1	B	457	GLY	2.4
1	A	210	LYS	2.3
1	B	188	LEU	2.2
1	B	194	ASP	2.2
1	B	158	PHE	2.1
1	B	196	PRO	2.1
1	B	454	PRO	2.1
1	B	192	ASN	2.1

6.2 Non-standard residues in protein, DNA, RNA chains [i](#)

There are no non-standard protein/DNA/RNA residues in this entry.

6.3 Carbohydrates [i](#)

There are no carbohydrates in this entry.

6.4 Ligands [i](#)

In the following table, the Atoms column lists the number of modelled atoms in the group and the number defined in the chemical component dictionary. LLDF column lists the quality of electron density of the group with respect to its neighbouring residues in protein, DNA or RNA chains. The B-factors column lists the minimum, median, 95th percentile and maximum values of B factors of atoms in the group. The column labelled 'Q < 0.9' lists the number of atoms with occupancy less than 0.9.

Mol	Type	Chain	Res	Atoms	RSCC	RSR	LLDF	B-factors(\AA^2)	Q<0.9
4	RU8	A	503	43/44	0.98	0.12	4.08	19,21,24,29	43
3	DMS	A	504	4/4	0.87	0.17	3.53	62,62,63,63	0
4	RU8	B	503	43/44	0.97	0.14	2.06	19,23,28,29	43
3	DMS	B	504	4/4	0.90	0.14	2.06	49,51,51,54	0
2	HEM	A	501	43/43	0.98	0.07	0.09	11,12,14,19	0
2	HEM	B	501	43/43	0.99	0.07	-0.29	11,12,14,18	0
3	DMS	A	502	4/4	0.98	0.08	-	19,20,23,27	0
3	DMS	B	502	4/4	0.97	0.07	-	19,19,20,26	0

6.5 Other polymers

There are no such residues in this entry.