



# Full wwPDB X-ray Structure Validation Report ⓘ

Jan 31, 2016 – 08:23 PM GMT

PDB ID : 1K1Y  
Title : Crystal structure of thermococcus litoralis 4-alpha-glucanotransferase complexed with acarbose  
Authors : Imamura, H.; Fushinobu, S.; Kumasaka, T.; Yamamoto, M.; Jeon, B.S.; Wakagi, T.; Matsuzawa, H.  
Deposited on : 2001-09-26  
Resolution : 2.40 Å(reported)

This is a Full wwPDB X-ray Structure Validation Report for a publicly released PDB entry.  
We welcome your comments at [validation@mail.wwpdb.org](mailto:validation@mail.wwpdb.org)  
A user guide is available at  
<http://wwpdb.org/validation/2016/XrayValidationReportHelp>  
with specific help available everywhere you see the ⓘ symbol.

---

The following versions of software and data (see [references ⓘ](#)) were used in the production of this report:

MolProbity : 4.02b-467  
Mogul : 1.7 (RC4), CSD as536be (2015)  
Xtriage (Phenix) : 1.9-1692  
EDS : rb-20026688  
Percentile statistics : 20151230.v01 (using entries in the PDB archive December 30th 2015)  
Refmac : 5.8.0135  
CCP4 : 6.5.0  
Ideal geometry (proteins) : Engh & Huber (2001)  
Ideal geometry (DNA, RNA) : Parkinson et al. (1996)  
Validation Pipeline (wwPDB-VP) : trunk26865

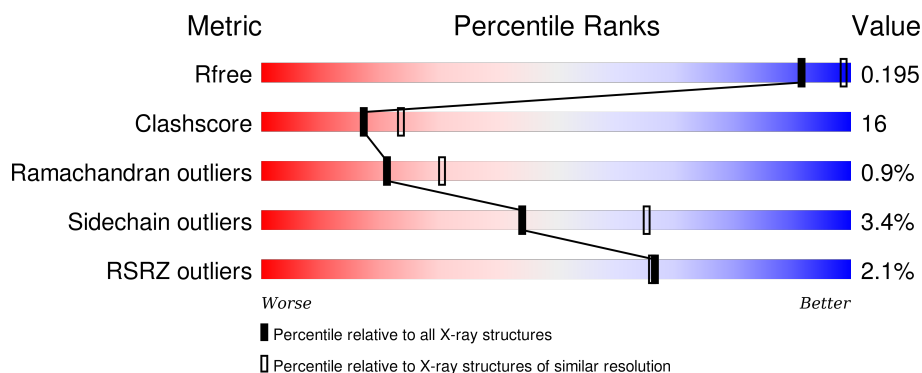
# 1 Overall quality at a glance

The following experimental techniques were used to determine the structure:

## *X-RAY DIFFRACTION*

The reported resolution of this entry is 2.40 Å.

Percentile scores (ranging between 0-100) for global validation metrics of the entry are shown in the following graphic. The table shows the number of entries on which the scores are based.



Metric	Whole archive (#Entries)	Similar resolution (#Entries, resolution range(Å))
$R_{free}$	91344	2919 (2.40-2.40)
Clashscore	102246	3407 (2.40-2.40)
Ramachandran outliers	100387	3351 (2.40-2.40)
Sidechain outliers	100360	3352 (2.40-2.40)
RSRZ outliers	91569	2928 (2.40-2.40)

The table below summarises the geometric issues observed across the polymeric chains and their fit to the electron density. The red, orange, yellow and green segments on the lower bar indicate the fraction of residues that contain outliers for  $\geq 3$ , 2, 1 and 0 types of geometric quality criteria. A grey segment represents the fraction of residues that are not modelled. The numeric value for each fraction is indicated below the corresponding segment, with a dot representing fractions  $\leq 5\%$ . The upper red bar (where present) indicates the fraction of residues that have poor fit to the electron density. The numeric value is given above the bar.

Mol	Chain	Length	Quality of chain
1	A	659	<div> <div>2%</div> <div>66%</div> <div>28%</div> <div>• •</div> </div>
1	B	659	<div> <div>2%</div> <div>61%</div> <div>34%</div> <div>• •</div> </div>

The following table lists non-polymeric compounds, carbohydrate monomers and non-standard residues in protein, DNA, RNA chains that are outliers for geometric or electron-density-fit criteria:

Mol	Type	Chain	Res	Chirality	Geometry	Clashes	Electron density
5	TRS	B	1604	-	X	-	-

## 2 Entry composition [i](#)

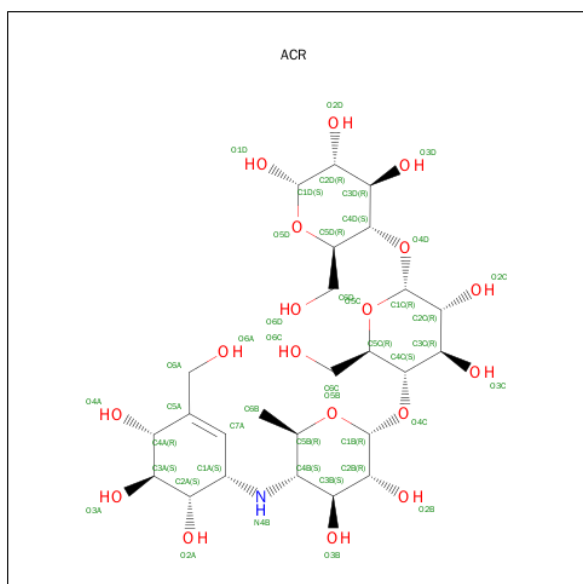
There are 6 unique types of molecules in this entry. The entry contains 11345 atoms, of which 0 are hydrogens and 0 are deuteriums.

In the tables below, the ZeroOcc column contains the number of atoms modelled with zero occupancy, the AltConf column contains the number of residues with at least one atom in alternate conformation and the Trace column contains the number of residues modelled with at most 2 atoms.

- Molecule 1 is a protein called 4-ALPHA-GLUCANOTRANSFERASE.

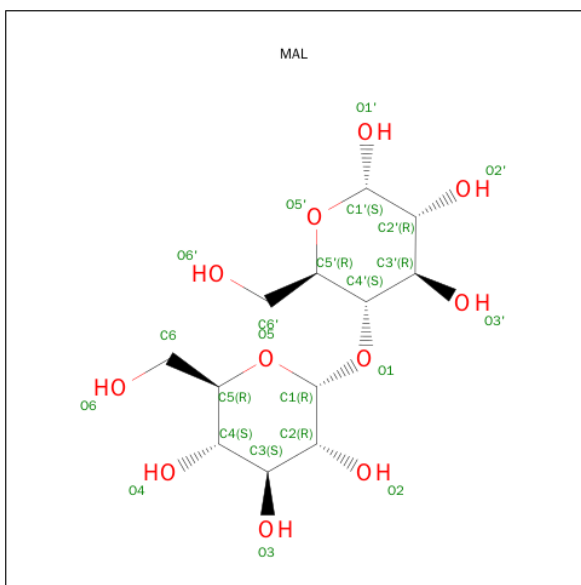
Mol	Chain	Residues	Atoms					ZeroOcc	AltConf	Trace
1	A	636	Total	C	N	O	S	0	0	0
			5348	3498	874	961	15			
1	B	636	Total	C	N	O	S	0	0	0
			5347	3498	874	961	14			

- Molecule 2 is SUGAR (ACARBOSE) (three-letter code: ACR) (formula:  $C_{25}H_{43}NO_{18}$ ).



Mol	Chain	Residues	Atoms				ZeroOcc	AltConf
2	A	1	Total	C	N	O	0	0
			44	25	1	18		

- Molecule 3 is SUGAR (MALTOSE) (three-letter code: MAL) (formula:  $C_{12}H_{22}O_{11}$ ).



Mol	Chain	Residues	Atoms			ZeroOcc	AltConf
3	B	1	Total	C	O	0	0
			23	12	11		

- Molecule 4 is CALCIUM ION (three-letter code: CA) (formula: Ca).

Mol	Chain	Residues	Atoms		ZeroOcc	AltConf
4	B	2	Total	Ca	0	0
			2	2		
4	A	1	Total	Ca	0	0
			1	1		

- Molecule 5 is 2-AMINO-2-HYDROXYMETHYL-PROPANE-1,3-DIOL (three-letter code: TRS) (formula: C<sub>4</sub>H<sub>12</sub>NO<sub>3</sub>).

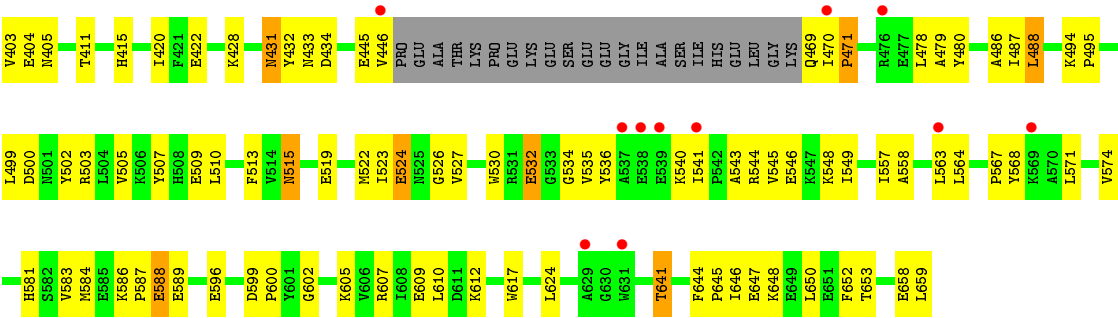


Mol	Chain	Residues	Atoms				ZeroOcc	AltConf
5	B	1	Total	C	N	O	0	0
			8	4	1	3		

- Molecule 6 is water.

Mol	Chain	Residues	Atoms		ZeroOcc	AltConf
6	A	331	Total	O	0	0
			331	331		
6	B	241	Total	O	0	0
			241	241		







## 4 Data and refinement statistics

Property	Value	Source
Space group	P 21 21 2	Depositor
Cell constants a, b, c, $\alpha$ , $\beta$ , $\gamma$	137.61Å 160.97Å 70.20Å 90.00° 90.00° 90.00°	Depositor
Resolution (Å)	39.85 – 2.40 39.85 – 2.40	Depositor EDS
% Data completeness (in resolution range)	99.7 (39.85-2.40) 99.8 (39.85-2.40)	Depositor EDS
$R_{merge}$	0.09	Depositor
$R_{sym}$	(Not available)	Depositor
$\langle I/\sigma(I) \rangle$ <sup>1</sup>	3.20 (at 2.39Å)	Xtriage
Refinement program	CNS 1.0	Depositor
R, $R_{free}$	0.198 , 0.256 0.202 , 0.195	Depositor DCC
$R_{free}$ test set	3128 reflections (5.07%)	DCC
Wilson B-factor (Å <sup>2</sup> )	32.2	Xtriage
Anisotropy	0.105	Xtriage
Bulk solvent $k_{sol}$ (e/Å <sup>3</sup> ), $B_{sol}$ (Å <sup>2</sup> )	0.32 , 56.8	EDS
Estimated twinning fraction	No twinning to report.	Xtriage
L-test for twinning <sup>2</sup>	$\langle  L  \rangle = 0.48$ , $\langle L^2 \rangle = 0.31$	Xtriage
Outliers	0 of 61684 reflections	Xtriage
$F_o, F_c$ correlation	0.94	EDS
Total number of atoms	11345	wwPDB-VP
Average B, all atoms (Å <sup>2</sup> )	40.0	wwPDB-VP

Xtriage's analysis on translational NCS is as follows: *The largest off-origin peak in the Patterson function is 2.99% of the height of the origin peak. No significant pseudotranslation is detected.*

<sup>1</sup>Intensities estimated from amplitudes.

<sup>2</sup>Theoretical values of  $\langle |L| \rangle$ ,  $\langle L^2 \rangle$  for acentric reflections are 0.5, 0.375 respectively for untwinned datasets, and 0.333, 0.2 for perfectly twinned datasets.

## 5 Model quality

### 5.1 Standard geometry

Bond lengths and bond angles in the following residue types are not validated in this section: ACR, TRS, CA, MAL

The Z score for a bond length (or angle) is the number of standard deviations the observed value is removed from the expected value. A bond length (or angle) with  $|Z| > 5$  is considered an outlier worth inspection. RMSZ is the root-mean-square of all Z scores of the bond lengths (or angles).

Mol	Chain	Bond lengths		Bond angles	
		RMSZ	$\# Z  > 5$	RMSZ	$\# Z  > 5$
1	A	0.38	0/5504	0.62	0/7440
1	B	0.35	0/5503	0.58	0/7440
All	All	0.36	0/11007	0.60	0/14880

There are no bond length outliers.

There are no bond angle outliers.

There are no chirality outliers.

There are no planarity outliers.

### 5.2 Too-close contacts

In the following table, the Non-H and H(model) columns list the number of non-hydrogen atoms and hydrogen atoms in the chain respectively. The H(added) column lists the number of hydrogen atoms added and optimized by MolProbity. The Clashes column lists the number of clashes within the asymmetric unit, whereas Symm-Clashes lists symmetry related clashes.

Mol	Chain	Non-H	H(model)	H(added)	Clashes	Symm-Clashes
1	A	5348	0	5250	158	0
1	B	5347	0	5247	189	0
2	A	44	0	43	1	0
3	B	23	0	22	0	0
4	A	1	0	0	0	0
4	B	2	0	0	0	0
5	B	8	0	12	0	0
6	A	331	0	0	10	0
6	B	241	0	0	5	0
All	All	11345	0	10574	344	0

The all-atom clashscore is defined as the number of clashes found per 1000 atoms (including

hydrogen atoms). The all-atom clashscore for this structure is 16.

All (344) close contacts within the same asymmetric unit are listed below, sorted by their clash magnitude.

Atom-1	Atom-2	Interatomic distance (Å)	Clash overlap (Å)
1:B:143:VAL:HG12	1:B:177:ILE:HD11	1.49	0.92
1:B:534:GLY:HA2	1:B:543:ALA:H	1.42	0.84
1:A:585:GLU:O	1:A:586:LYS:HD2	1.78	0.82
1:B:401:ILE:HG21	1:B:527:VAL:HG11	1.61	0.80
1:A:3:ARG:HD3	1:A:245:GLU:O	1.83	0.78
1:B:502:TYR:HA	1:B:507:TYR:CD2	2.19	0.77
1:B:132:LYS:O	1:B:136:GLU:HG3	1.84	0.77
1:A:431:ASN:ND2	1:A:433:ASN:H	1.83	0.77
1:A:13:HIS:CE1	1:A:87:GLU:HG3	2.20	0.77
1:A:121:LEU:HB3	1:A:124:ARG:HA	1.68	0.76
1:A:370:ARG:HD2	1:A:434:ASP:OD1	1.86	0.76
1:B:586:LYS:HG3	1:B:587:PRO:HD2	1.68	0.76
1:A:13:HIS:ND1	1:A:87:GLU:HG3	2.01	0.75
1:B:502:TYR:CE2	1:B:641:THR:HG21	2.23	0.73
1:A:11:HIS:ND1	1:A:49:HIS:HD2	1.86	0.73
1:A:305:ARG:HH11	1:A:305:ARG:HG3	1.54	0.73
1:B:599:ASP:OD2	1:B:602:GLY:HA3	1.89	0.72
1:B:370:ARG:HB2	1:B:370:ARG:HH11	1.53	0.71
1:B:11:HIS:ND1	1:B:49:HIS:HD2	1.89	0.71
1:B:617:TRP:HB2	1:B:641:THR:HG23	1.72	0.71
1:A:189:PRO:HG2	1:A:192:LYS:HG2	1.71	0.71
1:A:191:LYS:O	1:A:195:GLU:HG3	1.91	0.70
1:B:568:TYR:O	1:B:647:GLU:HA	1.92	0.70
1:A:27:TYR:CZ	1:A:62:LYS:HG2	2.27	0.70
1:B:286:LYS:HE3	1:B:445:GLU:OE1	1.92	0.70
1:B:515:ASN:HD22	1:B:515:ASN:H	1.39	0.70
1:B:523:ILE:O	1:B:524:GLU:HB2	1.93	0.69
1:B:45:LYS:H	1:B:249:LEU:HD21	1.56	0.69
1:A:50:PHE:HD2	1:A:54:LEU:HD13	1.59	0.68
1:B:75:ARG:HD2	1:B:77:GLN:OE1	1.93	0.68
1:B:370:ARG:CB	1:B:370:ARG:HH11	2.06	0.68
1:B:494:LYS:HG3	1:B:510:LEU:HD11	1.76	0.67
1:B:420:ILE:O	1:B:486:ALA:HB1	1.94	0.67
1:B:124:ARG:HD3	1:B:124:ARG:N	2.10	0.67
1:A:144:VAL:HG13	1:A:145:ASP:N	2.10	0.66
1:B:27:TYR:CE2	1:B:62:LYS:HG2	2.29	0.66
1:B:19:PHE:HB2	1:B:22:VAL:HG23	1.78	0.66
1:B:191:LYS:O	1:B:195:GLU:HG3	1.94	0.66

*Continued on next page...*

*Continued from previous page...*

Atom-1	Atom-2	Interatomic distance (Å)	Clash overlap (Å)
1:B:144:VAL:HG23	1:B:149:PHE:HE1	1.59	0.66
1:A:250:MET:HE1	1:A:255:TYR:HA	1.76	0.66
1:A:614:ALA:HB2	1:A:644:PHE:CE2	2.31	0.66
1:B:379:LYS:HA	1:B:382:ARG:HG2	1.78	0.65
1:B:226:GLU:HA	1:B:230:GLU:HG3	1.77	0.65
1:B:272:TYR:CZ	1:B:275:MET:HG2	2.32	0.65
1:B:390:ILE:HD12	1:B:401:ILE:HG12	1.79	0.65
1:B:275:MET:HE1	1:B:316:PHE:HE1	1.62	0.64
1:A:166:GLU:HB3	1:A:171:VAL:HG12	1.78	0.64
1:B:303:LYS:HE3	1:B:304:TYR:CZ	2.32	0.64
1:A:476:ARG:NH1	1:A:476:ARG:HB2	2.12	0.64
1:A:398:ARG:CZ	1:A:415:HIS:HB2	2.28	0.63
1:A:27:TYR:CE2	1:A:62:LYS:HG2	2.33	0.63
1:B:502:TYR:HA	1:B:507:TYR:HD2	1.60	0.63
1:A:431:ASN:C	1:A:431:ASN:HD22	2.02	0.62
1:A:398:ARG:HD3	6:B:1805:HOH:O	1.99	0.62
1:A:489:GLN:HG2	6:A:1723:HOH:O	1.99	0.62
1:A:615:LYS:HE2	1:A:617:TRP:NE1	2.15	0.62
1:A:118:GLY:HA3	1:A:141:TYR:CZ	2.34	0.62
1:A:494:LYS:HB3	1:A:496:GLU:OE2	2.00	0.61
1:B:396:ASP:HB3	6:B:1728:HOH:O	2.00	0.60
1:B:143:VAL:CG1	1:B:177:ILE:HD11	2.30	0.60
1:B:327:HIS:O	1:B:330:MET:HG3	2.01	0.60
1:A:583:VAL:O	1:A:585:GLU:N	2.35	0.60
1:A:435:VAL:HG12	1:A:436:LEU:N	2.16	0.59
1:A:515:ASN:HD22	1:A:515:ASN:H	1.50	0.59
1:A:561:ARG:HG3	1:A:651:GLU:HG2	1.85	0.59
1:A:624:LEU:HD22	1:A:631:TRP:CE3	2.38	0.59
1:B:166:GLU:HB3	1:B:171:VAL:HG12	1.85	0.59
1:A:520:TYR:HB3	1:A:529:LEU:HD23	1.83	0.58
1:B:32:ARG:HB3	1:B:33:PRO:HD3	1.85	0.58
1:A:410:ALA:HA	1:A:422:GLU:O	2.02	0.58
1:B:522:MET:SD	1:B:527:VAL:HG12	2.43	0.58
1:B:605:LYS:HB3	1:B:659:LEU:HB2	1.85	0.58
1:A:144:VAL:HG13	1:A:145:ASP:H	1.68	0.58
1:B:586:LYS:HG3	1:B:587:PRO:CD	2.34	0.58
1:B:370:ARG:HB2	1:B:370:ARG:NH1	2.19	0.58
1:B:478:LEU:HD23	1:B:479:ALA:N	2.18	0.57
1:B:146:ASP:HB2	1:B:159:LEU:HD13	1.86	0.57
1:B:37:ILE:HG21	1:B:234:LEU:HD12	1.85	0.57
1:A:476:ARG:CB	1:A:476:ARG:HH11	2.17	0.57

*Continued on next page...*

*Continued from previous page...*

Atom-1	Atom-2	Interatomic distance (Å)	Clash overlap (Å)
1:B:345:LYS:HD3	6:B:1826:HOH:O	2.02	0.57
1:B:478:LEU:HD11	1:B:624:LEU:HD11	1.86	0.57
1:A:435:VAL:HG12	1:A:436:LEU:H	1.70	0.57
1:A:624:LEU:HD22	1:A:631:TRP:HE3	1.69	0.57
1:A:580:VAL:CG1	1:A:583:VAL:HB	2.35	0.56
1:B:180:LYS:HD3	1:B:196:TYR:CE1	2.40	0.56
1:B:587:PRO:O	1:B:588:GLU:HB2	2.04	0.56
1:B:328:LYS:HG3	1:B:394:ASP:HA	1.88	0.56
1:B:342:GLU:HG2	1:B:383:TYR:OH	2.05	0.56
1:A:431:ASN:HD22	1:A:432:TYR:N	2.03	0.56
1:B:487:ILE:O	1:B:488:LEU:HB2	2.06	0.56
1:A:503:ARG:HH11	1:A:587:PRO:HG2	1.71	0.56
1:A:444:HIS:O	1:A:445:GLU:HB2	2.04	0.56
1:B:107:ASP:HA	1:B:110:ARG:NH1	2.20	0.56
1:B:118:GLY:HA3	1:B:141:TYR:CZ	2.41	0.56
1:B:515:ASN:H	1:B:515:ASN:ND2	2.02	0.56
1:B:275:MET:CE	1:B:316:PHE:HE1	2.19	0.55
1:B:32:ARG:HH11	1:B:32:ARG:HG3	1.71	0.55
1:B:50:PHE:HB3	1:B:55:LEU:HG	1.87	0.55
1:B:2:GLU:HB3	1:B:201:THR:HG22	1.88	0.55
1:A:585:GLU:C	1:A:586:LYS:HD2	2.25	0.55
1:B:607:ARG:HD2	1:B:609:GLU:OE2	2.06	0.55
1:B:121:LEU:HD12	1:B:144:VAL:HG12	1.88	0.55
1:A:390:ILE:HD12	1:A:401:ILE:HG12	1.88	0.55
1:B:27:TYR:CZ	1:B:62:LYS:HG2	2.42	0.55
1:A:25:GLU:O	1:A:29:ARG:HB2	2.07	0.55
1:B:33:PRO:HB2	1:B:229:TYR:CZ	2.42	0.55
1:B:2:GLU:HB3	1:B:201:THR:CG2	2.37	0.55
1:A:1:MET:HG2	1:A:202:SER:O	2.07	0.55
1:B:191:LYS:HD2	1:B:192:LYS:N	2.22	0.54
1:B:526:GLY:HA3	1:B:549:ILE:O	2.07	0.54
1:A:309:ARG:HG3	1:B:309:ARG:HB2	1.88	0.54
1:B:346:TYR:O	1:B:376:ASN:HB3	2.07	0.54
1:A:131:VAL:O	1:A:135:ARG:HB2	2.07	0.54
1:B:330:MET:CE	1:B:351:GLN:HG2	2.37	0.54
1:B:574:VAL:HG21	1:B:652:PHE:CZ	2.42	0.54
1:B:541:ILE:HD12	1:B:541:ILE:N	2.22	0.54
1:B:446:VAL:HG13	1:B:469:GLN:HE21	1.72	0.54
1:B:327:HIS:ND1	1:B:328:LYS:HE3	2.23	0.54
1:A:186:PRO:HD3	1:A:217:LYS:HD3	1.88	0.54
1:A:250:MET:CE	1:A:255:TYR:HA	2.39	0.53

*Continued on next page...*

*Continued from previous page...*

Atom-1	Atom-2	Interatomic distance (Å)	Clash overlap (Å)
1:B:532:GLU:HG2	1:B:532:GLU:O	2.08	0.53
1:B:144:VAL:O	1:B:176:PRO:HA	2.08	0.53
1:A:522:MET:SD	1:A:527:VAL:HG22	2.49	0.52
1:A:437:PRO:HD2	1:A:439:ARG:NH1	2.24	0.52
1:B:15:PRO:HB3	1:B:354:ASP:OD2	2.09	0.52
1:B:567:PRO:HA	1:B:647:GLU:O	2.10	0.52
1:B:494:LYS:CG	1:B:510:LEU:HD11	2.40	0.52
1:A:1:MET:SD	1:A:1:MET:N	2.72	0.52
1:A:562:VAL:HB	1:A:650:LEU:HB3	1.92	0.52
1:B:431:ASN:C	1:B:431:ASN:HD22	2.12	0.52
1:B:487:ILE:HG22	1:B:488:LEU:HG	1.91	0.52
1:A:166:GLU:HG2	1:B:395:PHE:CD1	2.45	0.52
1:B:146:ASP:O	1:B:150:MET:HG3	2.09	0.51
1:A:469:GLN:HG2	1:A:470:ILE:N	2.25	0.51
1:A:387:GLU:O	1:A:387:GLU:HG3	2.10	0.51
1:A:161:TRP:CG	1:A:262:ARG:HD2	2.45	0.51
1:B:446:VAL:HG11	1:B:469:GLN:HG3	1.93	0.51
1:A:365:TYR:CD2	1:A:623:THR:HG21	2.46	0.51
1:B:124:ARG:HG3	6:B:1649:HOH:O	2.09	0.51
1:A:496:GLU:CD	1:A:496:GLU:H	2.13	0.51
1:B:571:LEU:HD23	1:B:645:PRO:HA	1.92	0.51
1:A:190:VAL:HG21	1:A:236:GLU:HG2	1.93	0.50
1:B:30:SER:C	1:B:33:PRO:HD2	2.31	0.50
1:A:431:ASN:C	1:A:431:ASN:ND2	2.65	0.50
1:B:515:ASN:N	1:B:515:ASN:HD22	2.02	0.50
1:B:392:ASP:OD2	1:B:395:PHE:HA	2.12	0.50
1:A:615:LYS:HE2	1:A:617:TRP:HE1	1.75	0.50
1:B:544:ARG:HH12	1:B:546:GLU:CD	2.14	0.50
1:A:370:ARG:NH2	1:A:636:GLN:OE1	2.38	0.50
1:A:437:PRO:HG3	6:A:1668:HOH:O	2.12	0.50
1:A:144:VAL:CG1	1:A:145:ASP:N	2.74	0.50
1:B:532:GLU:H	1:B:532:GLU:CD	2.15	0.50
1:B:184:LEU:HD13	1:B:193:THR:HA	1.94	0.50
1:A:305:ARG:HH11	1:A:305:ARG:CG	2.24	0.49
1:B:428:LYS:HD2	1:B:432:TYR:OH	2.11	0.49
1:A:13:HIS:CG	1:A:87:GLU:HG3	2.47	0.49
1:A:1:MET:HG2	1:A:2:GLU:H	1.77	0.49
1:A:501:ASN:O	1:A:504:LEU:O	2.29	0.49
1:A:519:GLU:HB2	1:A:530:TRP:CE2	2.47	0.49
1:A:156:LYS:HE3	6:A:1684:HOH:O	2.11	0.49
1:A:11:HIS:ND1	1:A:49:HIS:CD2	2.73	0.49

*Continued on next page...*

*Continued from previous page...*

Atom-1	Atom-2	Interatomic distance (Å)	Clash overlap (Å)
1:A:323:SER:HB2	1:A:364:ILE:HD12	1.95	0.49
1:B:387:GLU:H	1:B:404:GLU:HG3	1.78	0.49
1:A:571:LEU:HD23	1:A:645:PRO:HA	1.93	0.49
1:B:564:LEU:HD12	1:B:564:LEU:N	2.27	0.49
1:B:15:PRO:O	1:B:18:ASN:HB2	2.12	0.49
1:B:10:ILE:HG13	1:B:48:VAL:HG23	1.94	0.49
1:A:503:ARG:NH1	1:A:587:PRO:HG2	2.28	0.49
1:A:502:TYR:HA	1:A:507:TYR:CD2	2.47	0.49
1:B:40:GLU:OE2	1:B:235:ARG:NH1	2.46	0.49
1:A:372:THR:HG22	6:A:1763:HOH:O	2.11	0.49
1:B:519:GLU:HB2	1:B:530:TRP:CE2	2.48	0.49
1:A:515:ASN:H	1:A:515:ASN:ND2	2.10	0.49
1:B:86:TYR:CE2	1:B:349:LYS:HG2	2.48	0.49
1:A:403:VAL:HG12	1:A:551:LEU:HD12	1.93	0.49
1:A:487:ILE:O	1:A:488:LEU:HB2	2.13	0.48
1:B:82:VAL:O	1:B:119:VAL:HA	2.13	0.48
1:B:29:ARG:O	1:B:219:GLY:HA3	2.13	0.48
1:A:3:ARG:CD	1:A:245:GLU:O	2.59	0.48
1:B:432:TYR:OH	1:B:658:GLU:HG3	2.14	0.48
1:B:388:ASN:OD1	1:B:403:VAL:HA	2.13	0.48
1:B:86:TYR:CZ	1:B:349:LYS:HG2	2.48	0.48
1:B:446:VAL:CG1	1:B:469:GLN:HG3	2.44	0.47
1:A:530:TRP:HA	1:A:545:VAL:O	2.14	0.47
1:A:589:GLU:HA	1:A:616:VAL:O	2.13	0.47
1:B:146:ASP:CB	1:B:159:LEU:HD13	2.44	0.47
1:A:529:LEU:HB2	1:A:547:LYS:HG3	1.95	0.47
1:B:100:VAL:HG21	1:B:344:ARG:NH1	2.29	0.47
1:A:582:SER:HB3	1:A:601:TYR:HB2	1.95	0.47
1:A:2:GLU:HB2	1:A:202:SER:O	2.14	0.47
1:B:275:MET:HE1	1:B:316:PHE:CE1	2.46	0.47
1:B:234:LEU:HD11	1:B:238:PHE:CZ	2.49	0.47
1:B:162:PRO:HG2	1:B:261:PRO:HA	1.97	0.47
1:A:72:LEU:HA	1:A:75:ARG:HG2	1.95	0.47
1:B:431:ASN:ND2	1:B:433:ASN:H	2.13	0.47
1:B:505:VAL:O	1:B:505:VAL:HG12	2.14	0.47
1:B:124:ARG:O	1:B:271:SER:HA	2.13	0.47
1:A:366:LEU:HB3	1:A:368:HIS:CE1	2.50	0.47
1:A:44:MET:SD	1:A:249:LEU:HD21	2.54	0.47
1:B:29:ARG:HG3	1:B:29:ARG:HH11	1.79	0.47
1:B:535:VAL:HG23	1:B:543:ALA:HB2	1.96	0.46
1:B:32:ARG:HD2	1:B:36:GLU:CD	2.35	0.46

*Continued on next page...*

*Continued from previous page...*

Atom-1	Atom-2	Interatomic distance (Å)	Clash overlap (Å)
1:B:548:LYS:O	1:B:558:ALA:HA	2.16	0.46
1:B:530:TRP:HA	1:B:545:VAL:O	2.15	0.46
1:B:563:LEU:HD23	1:B:563:LEU:C	2.36	0.46
1:A:185:ILE:HA	1:A:186:PRO:HA	1.73	0.46
1:B:557:ILE:HD11	1:B:653:THR:HG21	1.97	0.46
1:A:515:ASN:HD22	1:A:515:ASN:N	2.09	0.46
1:A:520:TYR:HA	1:A:528:LYS:O	2.16	0.46
1:B:16:LEU:HB3	1:B:372:THR:HG21	1.98	0.46
1:A:508:HIS:CE1	1:A:510:LEU:HD23	2.50	0.46
1:A:585:GLU:HG3	1:A:586:LYS:N	2.31	0.46
1:A:166:GLU:CB	1:A:171:VAL:HG12	2.46	0.46
1:B:583:VAL:HG23	1:B:600:PRO:HD2	1.98	0.46
1:A:110:ARG:NH2	6:A:1661:HOH:O	2.49	0.45
1:B:388:ASN:HA	1:B:402:MET:O	2.16	0.45
1:A:411:THR:HB	1:A:422:GLU:HB3	1.98	0.45
1:B:646:ILE:HB	1:B:650:LEU:HD22	1.98	0.45
1:A:333:VAL:O	1:A:337:VAL:HB	2.15	0.45
1:B:515:ASN:N	1:B:515:ASN:ND2	2.63	0.45
1:A:626:GLN:HB2	1:A:631:TRP:CZ3	2.51	0.45
1:B:478:LEU:HD21	1:B:480:TYR:CZ	2.51	0.45
1:A:4:ILE:O	1:A:4:ILE:HG23	2.16	0.45
1:A:54:LEU:HD22	1:A:58:ILE:HD11	1.98	0.45
1:B:500:ASP:HA	1:B:503:ARG:HD3	1.98	0.45
1:B:329:ARG:O	1:B:333:VAL:HG23	2.16	0.45
1:B:274:GLU:HB3	1:B:278:TRP:CZ2	2.52	0.45
1:A:339:ASP:HB2	6:A:1754:HOH:O	2.16	0.45
1:B:121:LEU:CD1	1:B:144:VAL:HG12	2.47	0.45
1:B:398:ARG:CZ	1:B:415:HIS:HB2	2.47	0.45
1:A:301:PHE:O	1:A:305:ARG:HB3	2.17	0.44
1:A:126:TRP:O	1:A:269:ILE:HA	2.17	0.44
1:A:394:ASP:N	1:A:394:ASP:OD2	2.49	0.44
1:A:615:LYS:HB3	1:A:643:LEU:HB2	1.98	0.44
1:B:191:LYS:HE2	1:B:192:LYS:NZ	2.31	0.44
1:A:366:LEU:HD12	1:A:369:LEU:CD1	2.47	0.44
1:B:185:ILE:HA	1:B:186:PRO:HA	1.77	0.44
1:A:344:ARG:O	1:A:347:ILE:HG22	2.17	0.44
1:B:507:TYR:HE1	1:B:509:GLU:HB2	1.82	0.44
1:B:89:VAL:HG23	1:B:353:ASN:HB2	1.99	0.44
1:B:9:GLY:O	1:B:212:HIS:HA	2.17	0.44
1:A:298:GLU:OE1	1:A:300:LYS:HE2	2.18	0.44
1:B:95:LYS:HA	1:B:98:ARG:HD2	1.99	0.44

*Continued on next page...*



*Continued from previous page...*

Atom-1	Atom-2	Interatomic distance (Å)	Clash overlap (Å)
1:B:45:LYS:H	1:B:249:LEU:CD2	2.26	0.44
1:B:44:MET:O	1:B:77:GLN:HG2	2.18	0.44
1:B:75:ARG:CD	1:B:77:GLN:OE1	2.65	0.44
1:A:314:LYS:HG2	1:B:266:TYR:CD2	2.53	0.44
1:B:285:ALA:O	1:B:289:VAL:HG23	2.18	0.44
1:B:289:VAL:O	1:B:293:GLU:HG2	2.18	0.44
1:B:275:MET:HB3	1:B:275:MET:HE2	1.88	0.44
1:B:27:TYR:O	1:B:32:ARG:HB2	2.18	0.43
1:B:495:PRO:HA	1:B:571:LEU:CD1	2.48	0.43
1:B:499:LEU:HD13	1:B:503:ARG:HD2	1.99	0.43
1:A:294:GLN:O	1:A:298:GLU:HG3	2.18	0.43
1:B:502:TYR:HE2	1:B:641:THR:HG21	1.81	0.43
1:A:499:LEU:HD23	1:A:617:TRP:CG	2.53	0.43
1:A:29:ARG:NH2	6:A:1782:HOH:O	2.49	0.43
1:B:32:ARG:O	1:B:36:GLU:HG3	2.18	0.43
1:A:66:LEU:O	1:A:70:ARG:HG3	2.19	0.43
1:A:513:PHE:CD2	1:A:531:ARG:HD3	2.53	0.43
1:A:250:MET:CE	1:A:254:GLU:HG2	2.49	0.43
1:A:214:ASP:O	1:A:217:LYS:HB3	2.17	0.43
1:B:18:ASN:HB3	1:B:23:PHE:CE1	2.53	0.43
1:B:21:TRP:O	1:B:24:GLU:HB3	2.17	0.43
1:B:589:GLU:O	1:B:589:GLU:HG3	2.16	0.43
1:B:478:LEU:HD23	1:B:478:LEU:C	2.39	0.43
1:B:37:ILE:CG2	1:B:234:LEU:HD12	2.48	0.43
1:A:361:PHE:CG	1:A:362:GLY:N	2.85	0.43
1:A:524:GLU:O	1:A:525:ASN:HB2	2.18	0.43
1:A:544:ARG:NH1	1:A:546:GLU:HG2	2.34	0.43
1:A:188:ARG:HB3	1:A:189:PRO:HD2	2.01	0.43
1:A:493:ILE:HD12	1:A:497:GLU:HB3	2.01	0.43
1:A:228:VAL:HA	1:A:233:TRP:HB3	2.00	0.43
1:A:561:ARG:HH11	1:A:561:ARG:HG2	1.84	0.42
1:B:29:ARG:HG3	1:B:29:ARG:NH1	2.34	0.42
1:A:566:LYS:HG3	1:A:567:PRO:HD2	2.01	0.42
1:B:499:LEU:HD13	1:B:499:LEU:O	2.20	0.42
1:B:431:ASN:HB3	1:B:434:ASP:HB2	2.00	0.42
1:A:5:ASN:HA	1:A:248:ASN:O	2.20	0.42
1:A:539:GLU:O	1:A:541:ILE:HG13	2.18	0.42
1:A:4:ILE:HG22	1:A:246:LYS:O	2.19	0.42
1:B:612:LYS:HE2	1:B:612:LYS:HB3	1.82	0.42
1:A:482:TRP:CD1	1:A:505:VAL:HG11	2.55	0.42
1:B:189:PRO:HB2	1:B:191:LYS:NZ	2.34	0.42

*Continued on next page...*

*Continued from previous page...*

Atom-1	Atom-2	Interatomic distance (Å)	Clash overlap (Å)
1:A:250:MET:HE3	1:A:254:GLU:HG2	2.00	0.42
1:B:40:GLU:CD	1:B:235:ARG:NH1	2.73	0.42
1:A:12:ASN:OD1	1:A:215:GLY:HA3	2.19	0.42
1:A:268:PRO:HB3	1:B:312:ILE:HG21	2.02	0.42
1:A:9:GLY:O	1:A:212:HIS:HA	2.19	0.42
1:A:536:TYR:CD1	1:A:536:TYR:N	2.88	0.42
2:A:660:ACR:H6C2	2:A:660:ACR:O5B	2.19	0.42
1:A:317:PHE:O	1:A:324:ASN:HB2	2.19	0.42
1:B:339:ASP:O	1:B:341:PRO:HD3	2.19	0.42
1:A:544:ARG:NH1	1:A:546:GLU:CG	2.83	0.42
1:A:123:GLU:OE1	1:A:123:GLU:HA	2.19	0.42
1:B:131:VAL:O	1:B:135:ARG:HG2	2.19	0.42
1:B:396:ASP:C	1:B:396:ASP:OD1	2.58	0.42
1:B:367:PRO:HB3	1:B:581:HIS:ND1	2.35	0.42
1:B:206:SER:HB3	1:B:259:PHE:CD2	2.55	0.42
1:B:589:GLU:HB2	1:B:617:TRP:CD1	2.56	0.41
1:A:502:TYR:O	1:A:504:LEU:O	2.38	0.41
1:A:1:MET:HG2	1:A:2:GLU:N	2.35	0.41
1:B:431:ASN:HD22	1:B:432:TYR:N	2.19	0.41
1:B:79:GLU:OE1	1:B:251:THR:HB	2.20	0.41
1:B:79:GLU:OE2	1:B:253:SER:OG	2.37	0.41
1:A:262:ARG:NH1	6:A:1898:HOH:O	2.52	0.41
1:A:70:ARG:HD2	6:A:1739:HOH:O	2.20	0.41
1:A:84:GLY:HA3	1:A:88:PRO:HD2	2.02	0.41
1:B:144:VAL:CG2	1:B:149:PHE:HE1	2.30	0.41
1:B:379:LYS:CA	1:B:382:ARG:HG2	2.48	0.41
1:B:353:ASN:CG	1:B:354:ASP:N	2.73	0.41
1:B:13:HIS:CG	1:B:14:GLN:N	2.88	0.41
1:A:149:PHE:CE1	1:A:176:PRO:HB3	2.55	0.41
1:B:145:ASP:HA	1:B:177:ILE:HB	2.02	0.41
1:A:435:VAL:HG13	1:A:636:GLN:O	2.20	0.41
1:B:226:GLU:O	1:B:230:GLU:HB2	2.21	0.41
1:A:390:ILE:CD1	1:A:401:ILE:HG23	2.51	0.41
1:A:347:ILE:O	1:A:351:GLN:HG3	2.20	0.41
1:B:405:ASN:HB2	6:B:1621:HOH:O	2.21	0.41
1:A:305:ARG:NH1	1:A:305:ARG:HG3	2.30	0.41
1:A:476:ARG:NH1	1:A:476:ARG:CB	2.77	0.41
1:B:166:GLU:HB3	1:B:171:VAL:CG1	2.50	0.41
1:B:146:ASP:HB2	1:B:159:LEU:CD1	2.51	0.41
1:B:84:GLY:HA3	1:B:88:PRO:HD2	2.02	0.41
1:A:135:ARG:HD2	1:A:135:ARG:HA	1.86	0.41

*Continued on next page...*

Continued from previous page...

Atom-1	Atom-2	Interatomic distance (Å)	Clash overlap (Å)
1:A:365:TYR:HD2	1:A:623:THR:HG21	1.85	0.41
1:B:344:ARG:O	1:B:347:ILE:HG22	2.20	0.41
1:A:295:LEU:HD23	1:A:300:LYS:HE3	2.01	0.41
1:B:365:TYR:O	1:B:367:PRO:HD3	2.20	0.41
1:B:536:TYR:OH	1:B:540:LYS:HE3	2.20	0.41
1:B:470:ILE:HA	1:B:471:PRO:HD3	1.89	0.41
1:A:594:GLU:HG2	1:A:609:GLU:HA	2.03	0.41
1:B:224:THR:O	1:B:228:VAL:HG23	2.21	0.41
1:B:30:SER:O	1:B:33:PRO:HD2	2.20	0.41
1:B:513:PHE:CE2	1:B:545:VAL:HG23	2.55	0.41
1:A:290:GLU:HG3	6:A:1929:HOH:O	2.20	0.41
1:A:305:ARG:HA	1:A:308:VAL:HG23	2.02	0.40
1:A:515:ASN:N	1:A:515:ASN:ND2	2.68	0.40
1:A:44:MET:O	1:A:77:GLN:HG2	2.21	0.40
1:A:396:ASP:OD2	1:A:396:ASP:C	2.60	0.40
1:B:411:THR:HB	1:B:422:GLU:HB3	2.03	0.40
1:A:390:ILE:HG22	1:A:399:ALA:HB1	2.02	0.40
1:B:86:TYR:OH	1:B:349:LYS:HE2	2.22	0.40
1:B:610:LEU:HD13	1:B:644:PHE:HZ	1.86	0.40

There are no symmetry-related clashes.

## 5.3 Torsion angles [i](#)

### 5.3.1 Protein backbone [i](#)

In the following table, the Percentiles column shows the percent Ramachandran outliers of the chain as a percentile score with respect to all X-ray entries followed by that with respect to entries of similar resolution.

The Analysed column shows the number of residues for which the backbone conformation was analysed, and the total number of residues.

Mol	Chain	Analysed	Favoured	Allowed	Outliers	Percentiles	
1	A	632/659 (96%)	598 (95%)	29 (5%)	5 (1%)	24	35
1	B	632/659 (96%)	582 (92%)	43 (7%)	7 (1%)	17	25
All	All	1264/1318 (96%)	1180 (93%)	72 (6%)	12 (1%)	21	30

All (12) Ramachandran outliers are listed below:

Mol	Chain	Res	Type
1	B	282	ALA
1	B	524	GLU
1	A	83	ALA
1	A	507	TYR
1	B	83	ALA
1	B	488	LEU
1	A	584	MET
1	B	648	LYS
1	A	488	LEU
1	B	588	GLU
1	B	471	PRO
1	A	299	GLY

### 5.3.2 Protein sidechains ⓘ

In the following table, the Percentiles column shows the percent sidechain outliers of the chain as a percentile score with respect to all X-ray entries followed by that with respect to entries of similar resolution.

The Analysed column shows the number of residues for which the sidechain conformation was analysed, and the total number of residues.

Mol	Chain	Analysed	Rotameric	Outliers	Percentiles	
1	A	567/586 (97%)	545 (96%)	22 (4%)	39	59
1	B	567/586 (97%)	550 (97%)	17 (3%)	48	70
All	All	1134/1172 (97%)	1095 (97%)	39 (3%)	44	65

All (39) residues with a non-rotameric sidechain are listed below:

Mol	Chain	Res	Type
1	A	1	MET
1	A	29	ARG
1	A	39	GLU
1	A	54	LEU
1	A	99	LEU
1	A	108	TYR
1	A	115	ASP
1	A	121	LEU
1	A	124	ARG
1	A	135	ARG
1	A	144	VAL
1	A	186	PRO

*Continued on next page...*

*Continued from previous page...*

Mol	Chain	Res	Type
1	A	191	LYS
1	A	234	LEU
1	A	330	MET
1	A	337	VAL
1	A	431	ASN
1	A	478	LEU
1	A	515	ASN
1	A	584	MET
1	A	623	THR
1	A	633	PHE
1	B	32	ARG
1	B	90	LEU
1	B	124	ARG
1	B	171	VAL
1	B	186	PRO
1	B	234	LEU
1	B	241	ILE
1	B	248	ASN
1	B	287	LEU
1	B	330	MET
1	B	370	ARG
1	B	431	ASN
1	B	515	ASN
1	B	532	GLU
1	B	584	MET
1	B	596	GLU
1	B	641	THR

Some sidechains can be flipped to improve hydrogen bonding and reduce clashes. All (13) such sidechains are listed below:

Mol	Chain	Res	Type
1	A	49	HIS
1	A	127	GLN
1	A	248	ASN
1	A	431	ASN
1	A	515	ASN
1	B	49	HIS
1	B	127	GLN
1	B	248	ASN
1	B	376	ASN
1	B	431	ASN
1	B	469	GLN

*Continued on next page...*

*Continued from previous page...*

Mol	Chain	Res	Type
1	B	501	ASN
1	B	515	ASN

### 5.3.3 RNA ⓘ

There are no RNA molecules in this entry.

## 5.4 Non-standard residues in protein, DNA, RNA chains ⓘ

There are no non-standard protein/DNA/RNA residues in this entry.

## 5.5 Carbohydrates ⓘ

There are no carbohydrates in this entry.

## 5.6 Ligand geometry ⓘ

Of 6 ligands modelled in this entry, 3 are monoatomic - leaving 3 for Mogul analysis.

In the following table, the Counts columns list the number of bonds (or angles) for which Mogul statistics could be retrieved, the number of bonds (or angles) that are observed in the model and the number of bonds (or angles) that are defined in the chemical component dictionary. The Link column lists molecule types, if any, to which the group is linked. The Z score for a bond length (or angle) is the number of standard deviations the observed value is removed from the expected value. A bond length (or angle) with  $|Z| > 2$  is considered an outlier worth inspection. RMSZ is the root-mean-square of all Z scores of the bond lengths (or angles).

Mol	Type	Chain	Res	Link	Bond lengths			Bond angles		
					Counts	RMSZ	# $ Z  > 2$	Counts	RMSZ	# $ Z  > 2$
2	ACR	A	660	-	46,47,47	1.90	11 (23%)	58,70,70	1.36	6 (10%)
5	TRS	B	1604	-	7,7,7	2.40	3 (42%)	9,9,9	3.44	7 (77%)
3	MAL	B	660	-	24,24,24	0.37	0	35,35,35	0.47	0

In the following table, the Chirals column lists the number of chiral outliers, the number of chiral centers analysed, the number of these observed in the model and the number defined in the chemical component dictionary. Similar counts are reported in the Torsion and Rings columns. '-' means no outliers of that kind were identified.

Mol	Type	Chain	Res	Link	Chirals	Torsions	Rings
2	ACR	A	660	-	-	0/18/98/98	0/4/4/4

*Continued on next page...*

*Continued from previous page...*

Mol	Type	Chain	Res	Link	Chirals	Torsions	Rings
5	TRS	B	1604	-	-	0/9/9/9	0/0/0/0
3	MAL	B	660	-	-	0/8/48/48	0/2/2/2

All (14) bond length outliers are listed below:

Mol	Chain	Res	Type	Atoms	Z	Observed(Å)	Ideal(Å)
5	B	1604	TRS	C-N	-4.79	1.43	1.50
2	A	660	ACR	C1A-N4B	2.02	1.51	1.47
2	A	660	ACR	O5D-C5D	2.05	1.49	1.44
2	A	660	ACR	C3A-C2A	2.10	1.57	1.52
5	B	1604	TRS	C2-C	2.13	1.57	1.53
2	A	660	ACR	C1D-C2D	2.14	1.57	1.52
2	A	660	ACR	C4D-C5D	2.49	1.59	1.52
2	A	660	ACR	O5B-C5B	2.70	1.51	1.44
5	B	1604	TRS	C1-C	2.80	1.58	1.53
2	A	660	ACR	C3A-C4A	3.54	1.57	1.53
2	A	660	ACR	O5D-C1D	3.57	1.49	1.43
2	A	660	ACR	C7A-C5A	3.64	1.38	1.32
2	A	660	ACR	C1A-C7A	3.84	1.55	1.50
2	A	660	ACR	C2A-C1A	6.87	1.62	1.53

All (13) bond angle outliers are listed below:

Mol	Chain	Res	Type	Atoms	Z	Observed(°)	Ideal(°)
5	B	1604	TRS	O1-C1-C	-4.81	101.45	111.18
2	A	660	ACR	O4C-C1B-O5B	-4.64	98.94	110.68
5	B	1604	TRS	C2-C-C1	-4.45	101.14	110.78
5	B	1604	TRS	C1-C-N	-2.75	103.08	108.09
5	B	1604	TRS	C3-C-C2	-2.60	105.15	110.78
2	A	660	ACR	O4A-C4A-C3A	-2.19	105.48	109.95
2	A	660	ACR	O4C-C4C-C3C	2.05	112.45	107.17
5	B	1604	TRS	O3-C3-C	2.21	115.66	111.18
2	A	660	ACR	O4A-C4A-C5A	2.92	116.65	110.36
2	A	660	ACR	C1B-O4C-C4C	3.02	125.90	118.01
5	B	1604	TRS	C3-C-N	4.00	115.36	108.09
5	B	1604	TRS	C2-C-N	4.75	116.74	108.09
2	A	660	ACR	O4C-C1B-C2B	4.84	119.87	108.10

There are no chirality outliers.

There are no torsion outliers.

There are no ring outliers.

1 monomer is involved in 1 short contact:

Mol	Chain	Res	Type	Clashes	Symm-Clashes
2	A	660	ACR	1	0

## 5.7 Other polymers [i](#)

There are no such residues in this entry.

## 5.8 Polymer linkage issues [i](#)

There are no chain breaks in this entry.



## 6 Fit of model and data

### 6.1 Protein, DNA and RNA chains

In the following table, the column labelled ‘#RSRZ> 2’ contains the number (and percentage) of RSRZ outliers, followed by percent RSRZ outliers for the chain as percentile scores relative to all X-ray entries and entries of similar resolution. The OWAB column contains the minimum, median, 95<sup>th</sup> percentile and maximum values of the occupancy-weighted average B-factor per residue. The column labelled ‘Q< 0.9’ lists the number of (and percentage) of residues with an average occupancy less than 0.9.

Mol	Chain	Analysed	<RSRZ>	#RSRZ>2	OWAB(Å <sup>2</sup> )	Q<0.9
1	A	636/659 (96%)	-0.24	12 (1%) 70 69	11, 28, 76, 113	0
1	B	636/659 (96%)	-0.00	15 (2%) 62 61	16, 40, 88, 121	0
All	All	1272/1318 (96%)	-0.12	27 (2%) 67 66	11, 35, 83, 121	0

All (27) RSRZ outliers are listed below:

Mol	Chain	Res	Type	RSRZ
1	B	537	ALA	4.2
1	A	583	VAL	4.0
1	B	631	TRP	3.7
1	B	629	ALA	3.6
1	A	470	ILE	3.6
1	B	541	ILE	3.5
1	B	289	VAL	3.4
1	B	470	ILE	3.4
1	B	539	GLU	3.3
1	A	631	TRP	3.1
1	A	476	ARG	2.9
1	A	471	PRO	2.8
1	B	446	VAL	2.7
1	A	537	ALA	2.7
1	A	469	GLN	2.5
1	B	538	GLU	2.5
1	A	472	GLU	2.4
1	B	302	GLU	2.4
1	B	569	LYS	2.3
1	B	563	LEU	2.3
1	B	476	ARG	2.2
1	B	3	ARG	2.1
1	A	539	GLU	2.1
1	B	300	LYS	2.1

*Continued on next page...*

*Continued from previous page...*

Mol	Chain	Res	Type	RSRZ
1	A	584	MET	2.1
1	A	1	MET	2.0
1	A	628	GLU	2.0

## 6.2 Non-standard residues in protein, DNA, RNA chains [i](#)

There are no non-standard protein/DNA/RNA residues in this entry.

## 6.3 Carbohydrates [i](#)

There are no carbohydrates in this entry.

## 6.4 Ligands [i](#)

In the following table, the Atoms column lists the number of modelled atoms in the group and the number defined in the chemical component dictionary. LLDF column lists the quality of electron density of the group with respect to its neighbouring residues in protein, DNA or RNA chains. The B-factors column lists the minimum, median, 95<sup>th</sup> percentile and maximum values of B factors of atoms in the group. The column labelled 'Q< 0.9' lists the number of atoms with occupancy less than 0.9.

Mol	Type	Chain	Res	Atoms	RSCC	RSR	LLDF	B-factors( $\text{\AA}^2$ )	Q<0.9
5	TRS	B	1604	8/8	0.90	0.20	1.99	37,37,37,37	0
4	CA	B	1603	1/1	0.97	0.17	1.00	43,43,43,43	0
3	MAL	B	660	23/23	0.91	0.15	0.83	49,53,57,59	0
2	ACR	A	660	44/44	0.90	0.16	0.33	31,33,37,38	0
4	CA	A	1601	1/1	0.84	0.13	-0.20	43,43,43,43	0
4	CA	B	1602	1/1	0.97	0.12	-0.74	32,32,32,32	0

## 6.5 Other polymers [i](#)

There are no such residues in this entry.