



Full wwPDB X-ray Structure Validation Report ⓘ

Jan 31, 2016 – 08:24 PM GMT

PDB ID : 1K6V
Title : LACK OF SYNERGY FOR INHIBITORS TARGETING A MULTI-DRUG
RESISTANT HIV-1 PROTEASE
Authors : Schiffer, C.A.
Deposited on : 2001-10-17
Resolution : 2.00 Å(reported)

This is a Full wwPDB X-ray Structure Validation Report for a publicly released PDB entry.
We welcome your comments at validation@mail.wwpdb.org
A user guide is available at
<http://wwpdb.org/validation/2016/XrayValidationReportHelp>
with specific help available everywhere you see the ⓘ symbol.

The following versions of software and data (see [references ⓘ](#)) were used in the production of this report:

MolProbity : 4.02b-467
Mogul : 1.7 (RC4), CSD as536be (2015)
Xtriage (Phenix) : **NOT EXECUTED**
EDS : **NOT EXECUTED**
Percentile statistics : 20151230.v01 (using entries in the PDB archive December 30th 2015)
Ideal geometry (proteins) : Engh & Huber (2001)
Ideal geometry (DNA, RNA) : Parkinson et al. (1996)
Validation Pipeline (wwPDB-VP) : trunk26865

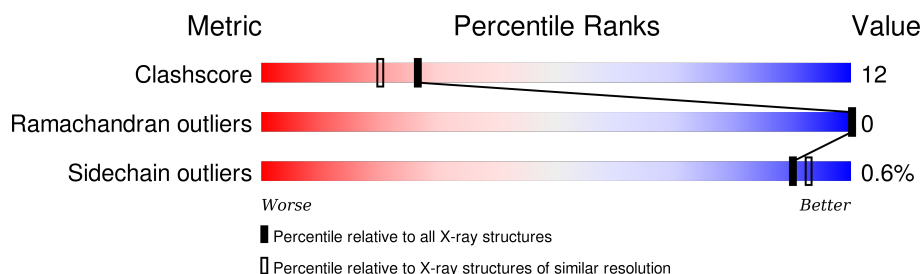
1 Overall quality at a glance

The following experimental techniques were used to determine the structure:

X-RAY DIFFRACTION

The reported resolution of this entry is 2.00 Å.

Percentile scores (ranging between 0-100) for global validation metrics of the entry are shown in the following graphic. The table shows the number of entries on which the scores are based.



Metric	Whole archive (#Entries)	Similar resolution (#Entries, resolution range(Å))
Clashscore	102246	7340 (2.00-2.00)
Ramachandran outliers	100387	7248 (2.00-2.00)
Sidechain outliers	100360	7247 (2.00-2.00)

The table below summarises the geometric issues observed across the polymeric chains and their fit to the electron density. The red, orange, yellow and green segments on the lower bar indicate the fraction of residues that contain outliers for ≥ 3 , 2, 1 and 0 types of geometric quality criteria. A grey segment represents the fraction of residues that are not modelled. The numeric value for each fraction is indicated below the corresponding segment, with a dot representing fractions $\leq 5\%$. The upper red bar (where present) indicates the fraction of residues that have poor fit to the electron density. The numeric value is given above the bar.

Note EDS was not executed.

Mol	Chain	Length	Quality of chain
1	A	99	<div> <div>80%</div> <div>20%</div> </div>
1	B	99	<div> <div>79%</div> <div>21%</div> </div>

The following table lists non-polymeric compounds, carbohydrate monomers and non-standard residues in protein, DNA, RNA chains that are outliers for geometric or electron-density-fit criteria:

Mol	Type	Chain	Res	Chirality	Geometry	Clashes	Electron density
2	ACT	B	505	-	-	X	-

2 Entry composition

There are 4 unique types of molecules in this entry. The entry contains 1807 atoms, of which 0 are hydrogens and 0 are deuteriums.

In the tables below, the ZeroOcc column contains the number of atoms modelled with zero occupancy, the AltConf column contains the number of residues with at least one atom in alternate conformation and the Trace column contains the number of residues modelled with at most 2 atoms.

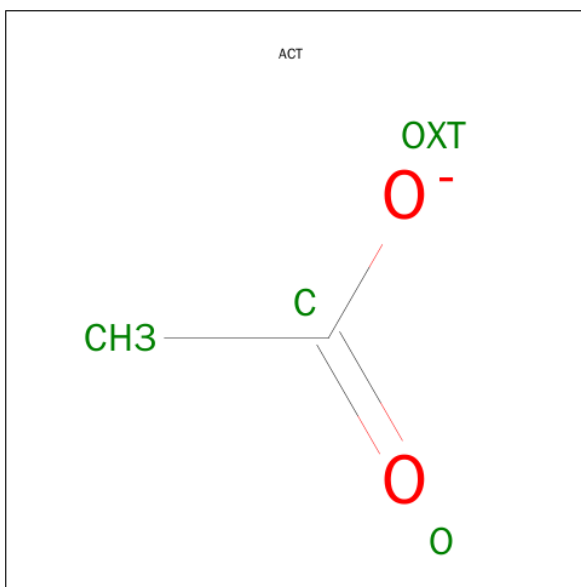
- Molecule 1 is a protein called POL polyprotein.

Mol	Chain	Residues	Atoms					ZeroOcc	AltConf	Trace
1	A	99	Total	C	N	O	S	0	5	0
			789	510	135	140	4			
1	B	99	Total	C	N	O	S	5	5	0
			795	510	136	145	4			

There are 8 discrepancies between the modelled and reference sequences:

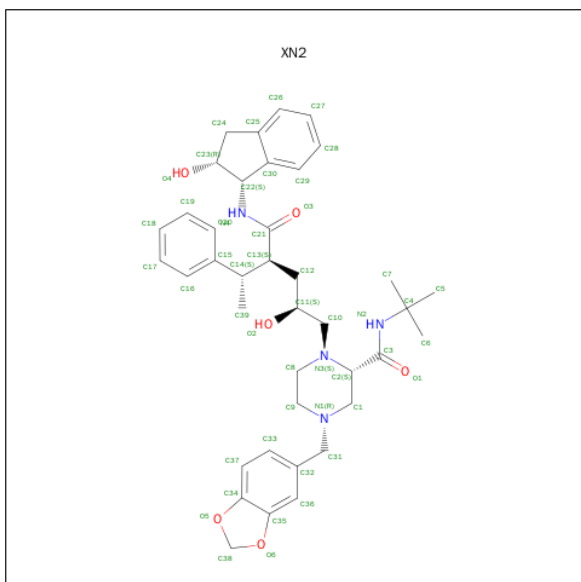
Chain	Residue	Modelled	Actual	Comment	Reference
A	7	LYS	GLN	ENGINEERED	UNP P35963
A	14	ARG	LYS	ENGINEERED	UNP P35963
A	82	THR	VAL	ENGINEERED	UNP P35963
A	84	VAL	ILE	ENGINEERED	UNP P35963
B	7	LYS	GLN	ENGINEERED	UNP P35963
B	14	ARG	LYS	ENGINEERED	UNP P35963
B	82	THR	VAL	ENGINEERED	UNP P35963
B	84	VAL	ILE	ENGINEERED	UNP P35963

- Molecule 2 is ACETATE ION (three-letter code: ACT) (formula: C₂H₃O₂).



Mol	Chain	Residues	Atoms			ZeroOcc	AltConf
2	A	1	Total	C	O	0	0
			4	2	2		
2	B	1	Total	C	O	0	0
			4	2	2		
2	A	1	Total	C	O	0	0
			4	2	2		
2	B	1	Total	C	O	0	0
			4	2	2		

- Molecule 3 is N-[2-HYDROXY-1-INDANYL]-5-[(2-TERTIARYBUTYLAMINOCARBONYL)-4(BENZO[1,3]DIOXOL-5-YLMETHYL)-PIPERAZINO]-4-HYDROXY-2-(1-PHENYLETHYL)-PENTANAMIDE (three-letter code: XN2) (formula: C₃₉H₅₀N₄O₆).



Mol	Chain	Residues	Atoms				ZeroOcc	AltConf
3	B	1	Total	C	N	O	0	0
			49	39	4	6		

- Molecule 4 is water.


Mol	Chain	Residues	Atoms		ZeroOcc	AltConf
4	A	83	Total	O	0	0
			83	83		
4	B	75	Total	O	0	0
			75	75		

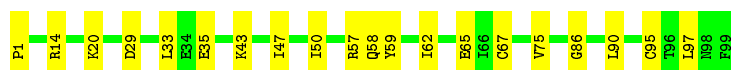
3 Residue-property plots

These plots are drawn for all protein, RNA and DNA chains in the entry. The first graphic for a chain summarises the proportions of errors displayed in the second graphic. The second graphic shows the sequence view annotated by issues in geometry and electron density. Residues are color-coded according to the number of geometric quality criteria for which they contain at least one outlier: green = 0, yellow = 1, orange = 2 and red = 3 or more. A red dot above a residue indicates a poor fit to the electron density ($RSRZ > 2$). Stretches of 2 or more consecutive residues without any outlier are shown as a green connector. Residues present in the sample, but not in the model, are shown in grey.


Note EDS was not executed.

- Molecule 1: POL polypeptide

Chain A:  80% 20%



- Molecule 1: POL polypeptide

Chain B:  79% 21%



4 Data and refinement statistics

Xtriage (Phenix) and EDS were not executed - this section will therefore be incomplete.

Property	Value	Source
Space group	P 21 21 21	Depositor
Cell constants a, b, c, α , β , γ	51.45Å 59.40Å 61.74Å 90.00° 90.00° 90.00°	Depositor
Resolution (Å)	27.00 – 2.00	Depositor
% Data completeness (in resolution range)	96.0 (27.00-2.00)	Depositor
R_{merge}	0.07	Depositor
R_{sym}	(Not available)	Depositor
Refinement program	CNS 0.9	Depositor
R, R_{free}	0.177 , 0.211	Depositor
Estimated twinning fraction	No twinning to report.	Xtriage
Total number of atoms	1807	wwPDB-VP
Average B, all atoms (Å ²)	30.0	wwPDB-VP

5 Model quality

5.1 Standard geometry

Bond lengths and bond angles in the following residue types are not validated in this section: XN2, ACT

The Z score for a bond length (or angle) is the number of standard deviations the observed value is removed from the expected value. A bond length (or angle) with $|Z| > 5$ is considered an outlier worth inspection. RMSZ is the root-mean-square of all Z scores of the bond lengths (or angles).

Mol	Chain	Bond lengths		Bond angles	
		RMSZ	$\# Z > 5$	RMSZ	$\# Z > 5$
1	A	0.30	0/729	0.61	0/981
1	B	0.32	0/722	0.62	0/970
All	All	0.31	0/1451	0.61	0/1951

There are no bond length outliers.

There are no bond angle outliers.

There are no chirality outliers.

There are no planarity outliers.

5.2 Too-close contacts

In the following table, the Non-H and H(model) columns list the number of non-hydrogen atoms and hydrogen atoms in the chain respectively. The H(added) column lists the number of hydrogen atoms added and optimized by MolProbity. The Clashes column lists the number of clashes within the asymmetric unit, whereas Symm-Clashes lists symmetry related clashes.

Mol	Chain	Non-H	H(model)	H(added)	Clashes	Symm-Clashes
1	A	789	0	834	20	0
1	B	795	0	826	28	0
2	A	8	0	6	0	0
2	B	8	0	6	3	0
3	B	49	0	49	2	0
4	A	83	0	0	4	0
4	B	75	0	0	4	0
All	All	1807	0	1721	41	0

The all-atom clashscore is defined as the number of clashes found per 1000 atoms (including hydrogen atoms). The all-atom clashscore for this structure is 12.

All (41) close contacts within the same asymmetric unit are listed below, sorted by their clash magnitude.

Atom-1	Atom-2	Interatomic distance (Å)	Clash overlap (Å)
1:B:37:ASN:ND2	2:B:505:ACT:H3	1.74	1.01
1:B:37:ASN:HD22	2:B:505:ACT:H3	1.31	0.90
1:B:10:LEU:HD13	1:B:21[2]:GLU:OE2	1.77	0.83
1:B:37:ASN:ND2	2:B:505:ACT:CH3	2.43	0.81
1:A:20:LYS:HE3	4:A:586:HOH:O	1.92	0.70
1:A:57:ARG:NH1	1:A:59:TYR:OH	2.26	0.68
1:B:32[1]:VAL:HG22	1:B:76:LEU:HB2	1.75	0.68
1:A:47[2]:ILE:HD11	4:A:579:HOH:O	1.95	0.65
1:A:43:LYS:HD3	4:A:583:HOH:O	1.97	0.65
1:B:57:ARG:HD2	4:B:550:HOH:O	1.97	0.63
1:B:32[1]:VAL:HG23	3:B:252:ASN:H27	1.82	0.59
1:B:61[2]:GLN:HA	1:B:61[2]:GLN:HE21	1.67	0.59
1:B:61[2]:GLN:HA	1:B:61[2]:GLN:NE2	2.19	0.58
1:B:32[2]:VAL:HG12	1:B:84[2]:VAL:CG2	2.36	0.55
1:A:47[1]:ILE:HD12	3:B:252:ASN:H71	1.88	0.55
1:A:50[1]:ILE:HD13	1:B:81:PRO:HD2	1.89	0.54
1:B:35[1]:GLU:HG2	4:B:532:HOH:O	2.09	0.52
1:B:20:LYS:HE3	1:B:36:MET:SD	2.51	0.51
1:A:14:ARG:HB3	1:A:65:GLU:HB3	1.94	0.50
1:B:25:ASP:CB	1:B:84[1]:VAL:HG13	2.42	0.49
1:A:86:GLY:O	1:A:90:LEU:HG	2.12	0.49
1:B:61[2]:GLN:CA	1:B:61[2]:GLN:HE21	2.26	0.48
1:A:50[2]:ILE:CG2	1:B:49:GLY:HA3	2.44	0.48
1:A:29:ASP:OD2	1:B:8:ARG:NH2	2.46	0.48
1:B:25:ASP:HB3	1:B:84[1]:VAL:HG13	1.97	0.47
1:B:30:ASP:HB3	4:B:516:HOH:O	2.14	0.47
1:B:32[2]:VAL:CG1	1:B:84[2]:VAL:HG22	2.45	0.46
1:A:50[2]:ILE:HG23	1:A:50[2]:ILE:O	2.15	0.46
1:B:70:LYS:HE3	4:B:570:HOH:O	2.16	0.45
1:A:95:CYS:HA	1:B:99:PHE:HB3	1.98	0.45
1:A:35:GLU:OE2	1:A:57:ARG:NH2	2.48	0.45
1:B:32[2]:VAL:HG12	1:B:84[2]:VAL:HG22	1.98	0.45
1:A:50[2]:ILE:HG22	1:B:49:GLY:HA3	1.99	0.43
1:A:62:ILE:HG13	1:A:75[2]:VAL:HG22	2.01	0.43
1:A:62:ILE:HG13	1:A:75[2]:VAL:CG2	2.48	0.43
1:B:42:TRP:CE3	1:B:57:ARG:HG2	2.53	0.43
1:A:58:GLN:NE2	4:A:583:HOH:O	2.51	0.42
1:A:1:PRO:N	1:B:99:PHE:O	2.48	0.41
1:B:32[1]:VAL:HG21	1:B:47:ILE:CD1	2.51	0.41
1:A:33:LEU:HD12	1:A:75[1]:VAL:HG11	2.03	0.40

Continued on next page...

Continued from previous page...

Atom-1	Atom-2	Interatomic distance (Å)	Clash overlap (Å)
1:A:97:LEU:HD23	1:B:97:LEU:HD23	2.02	0.40

There are no symmetry-related clashes.

5.3 Torsion angles [i](#)

5.3.1 Protein backbone [i](#)

In the following table, the Percentiles column shows the percent Ramachandran outliers of the chain as a percentile score with respect to all X-ray entries followed by that with respect to entries of similar resolution.

The Analysed column shows the number of residues for which the backbone conformation was analysed, and the total number of residues.

Mol	Chain	Analysed	Favoured	Allowed	Outliers	Percentiles	
1	A	102/99 (103%)	102 (100%)	0	0	100	100
1	B	102/99 (103%)	101 (99%)	1 (1%)	0	100	100
All	All	204/198 (103%)	203 (100%)	1 (0%)	0	100	100

There are no Ramachandran outliers to report.

5.3.2 Protein sidechains [i](#)

In the following table, the Percentiles column shows the percent sidechain outliers of the chain as a percentile score with respect to all X-ray entries followed by that with respect to entries of similar resolution.

The Analysed column shows the number of residues for which the sidechain conformation was analysed, and the total number of residues.

Mol	Chain	Analysed	Rotameric	Outliers	Percentiles	
1	A	78/83 (94%)	77 (99%)	1 (1%)	76	79
1	B	77/83 (93%)	77 (100%)	0	100	100
All	All	155/166 (93%)	154 (99%)	1 (1%)	90	93

All (1) residues with a non-rotameric sidechain are listed below:

Mol	Chain	Res	Type
1	A	67	CYS

Some sidechains can be flipped to improve hydrogen bonding and reduce clashes. All (2) such sidechains are listed below:

Mol	Chain	Res	Type
1	B	18	GLN
1	B	37	ASN

5.3.3 RNA [i](#)

There are no RNA molecules in this entry.

5.4 Non-standard residues in protein, DNA, RNA chains [i](#)

There are no non-standard protein/DNA/RNA residues in this entry.

5.5 Carbohydrates [i](#)

There are no carbohydrates in this entry.

5.6 Ligand geometry [i](#)

5 ligands are modelled in this entry.

In the following table, the Counts columns list the number of bonds (or angles) for which Mogul statistics could be retrieved, the number of bonds (or angles) that are observed in the model and the number of bonds (or angles) that are defined in the chemical component dictionary. The Link column lists molecule types, if any, to which the group is linked. The Z score for a bond length (or angle) is the number of standard deviations the observed value is removed from the expected value. A bond length (or angle) with $|Z| > 2$ is considered an outlier worth inspection. RMSZ is the root-mean-square of all Z scores of the bond lengths (or angles).

Mol	Type	Chain	Res	Link	Bond lengths			Bond angles		
					Counts	RMSZ	$\# Z > 2$	Counts	RMSZ	$\# Z > 2$
2	ACT	A	502	-	1,3,3	2.57	1 (100%)	0,3,3	0.00	-
2	ACT	A	506	-	1,3,3	2.83	1 (100%)	0,3,3	0.00	-
3	XN2	B	252	-	53,54,54	4.40	32 (60%)	68,78,78	3.35	30 (44%)
2	ACT	B	505	-	1,3,3	2.81	1 (100%)	0,3,3	0.00	-
2	ACT	B	508	-	1,3,3	3.05	1 (100%)	0,3,3	0.00	-

In the following table, the Chirals column lists the number of chiral outliers, the number of chiral centers analysed, the number of these observed in the model and the number defined in the chemical component dictionary. Similar counts are reported in the Torsion and Rings columns. '-' means no outliers of that kind were identified.

Mol	Type	Chain	Res	Link	Chirals	Torsions	Rings
2	ACT	A	502	-	-	0/0/0/0	0/0/0/0
2	ACT	A	506	-	-	0/0/0/0	0/0/0/0
3	XN2	B	252	-	-	0/37/68/68	0/6/6/6
2	ACT	B	505	-	-	0/0/0/0	0/0/0/0
2	ACT	B	508	-	-	0/0/0/0	0/0/0/0

All (36) bond length outliers are listed below:

Mol	Chain	Res	Type	Atoms	Z	Observed(Å)	Ideal(Å)
3	B	252	XN2	C39-C14	-11.45	1.30	1.53
3	B	252	XN2	C6-C4	-4.27	1.41	1.52
3	B	252	XN2	C23-C22	-3.25	1.52	1.55
3	B	252	XN2	C10-C11	-2.25	1.47	1.52
3	B	252	XN2	C30-C22	2.07	1.53	1.51
3	B	252	XN2	C3-N2	2.21	1.39	1.34
3	B	252	XN2	C8-N3	2.25	1.51	1.47
2	A	502	ACT	CH3-C	2.57	1.52	1.48
3	B	252	XN2	C29-C30	2.58	1.43	1.39
3	B	252	XN2	O5-C38	2.69	1.48	1.43
3	B	252	XN2	C35-C34	2.70	1.46	1.39
2	B	505	ACT	CH3-C	2.81	1.52	1.48
2	A	506	ACT	CH3-C	2.83	1.52	1.48
3	B	252	XN2	O1-C3	2.89	1.29	1.23
2	B	508	ACT	CH3-C	3.05	1.53	1.48
3	B	252	XN2	C28-C29	3.06	1.45	1.38
3	B	252	XN2	O3-C21	3.64	1.30	1.23
3	B	252	XN2	C19-C20	3.99	1.47	1.38
3	B	252	XN2	O6-C38	4.14	1.51	1.43
3	B	252	XN2	C17-C16	4.39	1.47	1.38
3	B	252	XN2	C15-C14	4.52	1.58	1.52
3	B	252	XN2	C27-C26	4.68	1.48	1.38
3	B	252	XN2	C33-C32	5.05	1.49	1.38
3	B	252	XN2	C28-C27	5.05	1.51	1.38
3	B	252	XN2	C19-C18	5.16	1.51	1.38
3	B	252	XN2	C13-C21	5.41	1.61	1.52
3	B	252	XN2	C37-C34	5.58	1.51	1.39
3	B	252	XN2	C18-C17	5.82	1.52	1.38
3	B	252	XN2	C37-C33	5.97	1.49	1.38
3	B	252	XN2	C36-C35	6.16	1.50	1.38

Continued on next page...

Continued from previous page...

Mol	Chain	Res	Type	Atoms	Z	Observed(Å)	Ideal(Å)
3	B	252	XN2	C36-C32	6.61	1.51	1.39
3	B	252	XN2	C20-C15	6.68	1.50	1.39
3	B	252	XN2	C1-N1	6.73	1.58	1.46
3	B	252	XN2	C2-N3	7.97	1.57	1.48
3	B	252	XN2	C16-C15	9.86	1.55	1.39
3	B	252	XN2	C25-C30	11.61	1.62	1.39

All (30) bond angle outliers are listed below:

Mol	Chain	Res	Type	Atoms	Z	Observed(°)	Ideal(°)
3	B	252	XN2	C24-C25-C30	-8.29	101.25	110.98
3	B	252	XN2	O6-C38-O5	-7.19	95.96	108.12
3	B	252	XN2	O2-C11-C10	-5.99	93.47	109.87
3	B	252	XN2	C13-C21-N4	-5.18	109.70	116.08
3	B	252	XN2	O6-C35-C34	-4.51	104.02	109.77
3	B	252	XN2	C39-C14-C15	-4.05	103.98	112.17
3	B	252	XN2	C33-C37-C34	-3.65	112.98	120.03
3	B	252	XN2	C25-C30-C22	-2.80	108.25	110.39
3	B	252	XN2	C36-C35-C34	-2.80	118.18	121.96
3	B	252	XN2	O2-C11-C12	-2.74	102.73	109.15
3	B	252	XN2	C6-C4-C5	-2.39	103.73	109.88
3	B	252	XN2	C8-N3-C10	-2.36	106.50	111.75
3	B	252	XN2	C29-C30-C25	-2.15	118.03	120.78
3	B	252	XN2	C9-C8-N3	-2.10	105.87	110.79
3	B	252	XN2	C7-C4-N2	2.28	114.57	108.75
3	B	252	XN2	C37-C33-C32	2.36	124.27	121.04
3	B	252	XN2	C3-C2-N3	2.57	117.02	111.43
3	B	252	XN2	C29-C30-C22	3.38	133.72	128.77
3	B	252	XN2	C37-C34-C35	3.53	126.21	121.41
3	B	252	XN2	C4-N2-C3	3.74	130.65	126.15
3	B	252	XN2	C30-C22-N4	3.78	119.60	114.36
3	B	252	XN2	O3-C21-C13	4.01	126.16	121.56
3	B	252	XN2	C24-C25-C26	4.08	138.15	129.23
3	B	252	XN2	C8-N3-C2	5.21	120.34	110.82
3	B	252	XN2	C25-C24-C23	5.42	109.03	103.38
3	B	252	XN2	O6-C35-C36	6.92	137.80	127.88
3	B	252	XN2	C38-O5-C34	7.04	115.48	105.35
3	B	252	XN2	C12-C11-C10	7.20	119.43	112.08
3	B	252	XN2	C38-O6-C35	8.06	116.94	105.35
3	B	252	XN2	C39-C14-C13	8.12	131.53	112.16

There are no chirality outliers.

There are no torsion outliers.

There are no ring outliers.

2 monomers are involved in 5 short contacts:

Mol	Chain	Res	Type	Clashes	Symm-Clashes
3	B	252	XN2	2	0
2	B	505	ACT	3	0

5.7 Other polymers [i](#)

There are no such residues in this entry.

5.8 Polymer linkage issues [i](#)

There are no chain breaks in this entry.

6 Fit of model and data ⓘ

6.1 Protein, DNA and RNA chains ⓘ

EDS was not executed - this section will therefore be empty.

6.2 Non-standard residues in protein, DNA, RNA chains ⓘ

EDS was not executed - this section will therefore be empty.

6.3 Carbohydrates ⓘ

EDS was not executed - this section will therefore be empty.

6.4 Ligands ⓘ

EDS was not executed - this section will therefore be empty.

6.5 Other polymers ⓘ

EDS was not executed - this section will therefore be empty.