



# Full wwPDB X-ray Structure Validation Report ⓘ

Feb 1, 2016 – 06:02 PM GMT

PDB ID : 4KAT  
Title : Crystal structure of FDTS from *T. maritima* mutant (R174K) with FAD and dUMP  
Authors : Mathews, I.I.  
Deposited on : 2013-04-22  
Resolution : 2.14 Å(reported)

This is a Full wwPDB X-ray Structure Validation Report for a publicly released PDB entry.  
We welcome your comments at [validation@mail.wwpdb.org](mailto:validation@mail.wwpdb.org)  
A user guide is available at  
<http://wwpdb.org/validation/2016/XrayValidationReportHelp>  
with specific help available everywhere you see the ⓘ symbol.

---

The following versions of software and data (see [references ⓘ](#)) were used in the production of this report:

MolProbity : 4.02b-467  
Mogul : 1.7 (RC4), CSD as536be (2015)  
Xtriage (Phenix) : 1.9-1692  
EDS : rb-20026688  
Percentile statistics : 20151230.v01 (using entries in the PDB archive December 30th 2015)  
Refmac : 5.8.0135  
CCP4 : 6.5.0  
Ideal geometry (proteins) : Engh & Huber (2001)  
Ideal geometry (DNA, RNA) : Parkinson et al. (1996)  
Validation Pipeline (wwPDB-VP) : trunk26865

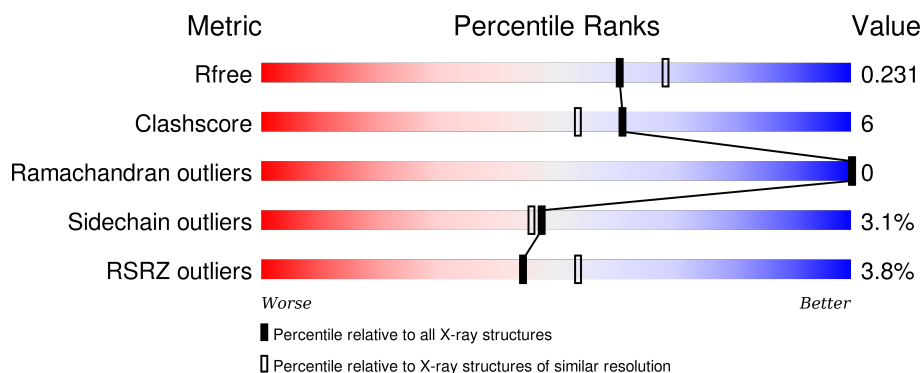
# 1 Overall quality at a glance

The following experimental techniques were used to determine the structure:

## *X-RAY DIFFRACTION*

The reported resolution of this entry is 2.14 Å.

Percentile scores (ranging between 0-100) for global validation metrics of the entry are shown in the following graphic. The table shows the number of entries on which the scores are based.



Metric	Whole archive (#Entries)	Similar resolution (#Entries, resolution range(Å))
$R_{free}$	91344	1693 (2.16-2.12)
Clashscore	102246	1824 (2.16-2.12)
Ramachandran outliers	100387	1798 (2.16-2.12)
Sidechain outliers	100360	1798 (2.16-2.12)
RSRZ outliers	91569	1699 (2.16-2.12)

The table below summarises the geometric issues observed across the polymeric chains and their fit to the electron density. The red, orange, yellow and green segments on the lower bar indicate the fraction of residues that contain outliers for  $\geq 3$ , 2, 1 and 0 types of geometric quality criteria. A grey segment represents the fraction of residues that are not modelled. The numeric value for each fraction is indicated below the corresponding segment, with a dot representing fractions  $\leq 5\%$ . The upper red bar (where present) indicates the fraction of residues that have poor fit to the electron density. The numeric value is given above the bar.

Mol	Chain	Length	Quality of chain
1	A	232	<div> <div>4%</div> <div>78% 16% • 6%</div> </div>
1	B	232	<div> <div>6%</div> <div>81% 13% • 5%</div> </div>
1	C	232	<div> <div>2%</div> <div>81% 9% • 8%</div> </div>
1	D	232	<div> <div>2%</div> <div>76% 14% 10%</div> </div>

## 2 Entry composition

There are 4 unique types of molecules in this entry. The entry contains 7606 atoms, of which 0 are hydrogens and 0 are deuteriums.

In the tables below, the ZeroOcc column contains the number of atoms modelled with zero occupancy, the AltConf column contains the number of residues with at least one atom in alternate conformation and the Trace column contains the number of residues modelled with at most 2 atoms.

- Molecule 1 is a protein called Thymidylate synthase.

Mol	Chain	Residues	Atoms					ZeroOcc	AltConf	Trace
1	A	218	Total	C	N	O	S	0	1	0
			1834	1194	316	318	6			
1	B	220	Total	C	N	O	S	0	0	0
			1841	1198	314	323	6			
1	C	213	Total	C	N	O	S	0	0	0
			1783	1161	304	313	5			
1	D	209	Total	C	N	O	S	0	0	0
			1753	1145	298	305	5			

There are 52 discrepancies between the modelled and reference sequences:

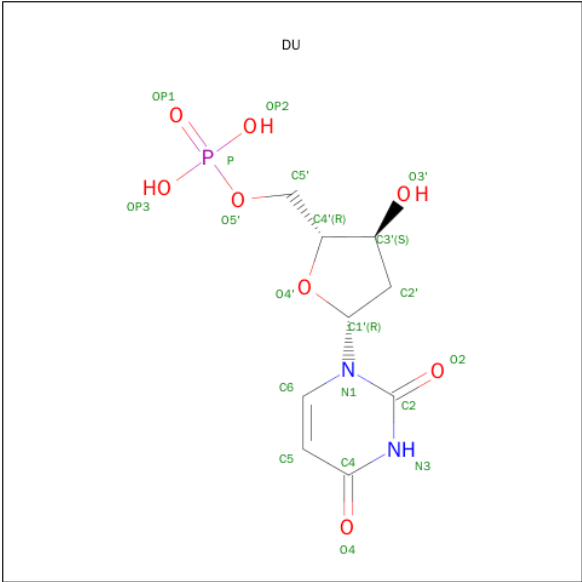
Chain	Residue	Modelled	Actual	Comment	Reference
A	-11	MET	-	INITIATING METHIONINE	UNP Q9WYT0
A	-10	GLY	-	EXPRESSION TAG	UNP Q9WYT0
A	-9	SER	-	EXPRESSION TAG	UNP Q9WYT0
A	-8	ASP	-	EXPRESSION TAG	UNP Q9WYT0
A	-7	LYS	-	EXPRESSION TAG	UNP Q9WYT0
A	-6	ILE	-	EXPRESSION TAG	UNP Q9WYT0
A	-5	HIS	-	EXPRESSION TAG	UNP Q9WYT0
A	-4	HIS	-	EXPRESSION TAG	UNP Q9WYT0
A	-3	HIS	-	EXPRESSION TAG	UNP Q9WYT0
A	-2	HIS	-	EXPRESSION TAG	UNP Q9WYT0
A	-1	HIS	-	EXPRESSION TAG	UNP Q9WYT0
A	0	HIS	-	EXPRESSION TAG	UNP Q9WYT0
A	174	LYS	ARG	ENGINEERED MUTATION	UNP Q9WYT0
B	-11	MET	-	INITIATING METHIONINE	UNP Q9WYT0
B	-10	GLY	-	EXPRESSION TAG	UNP Q9WYT0
B	-9	SER	-	EXPRESSION TAG	UNP Q9WYT0
B	-8	ASP	-	EXPRESSION TAG	UNP Q9WYT0
B	-7	LYS	-	EXPRESSION TAG	UNP Q9WYT0
B	-6	ILE	-	EXPRESSION TAG	UNP Q9WYT0
B	-5	HIS	-	EXPRESSION TAG	UNP Q9WYT0
B	-4	HIS	-	EXPRESSION TAG	UNP Q9WYT0

*Continued on next page...*

*Continued from previous page...*

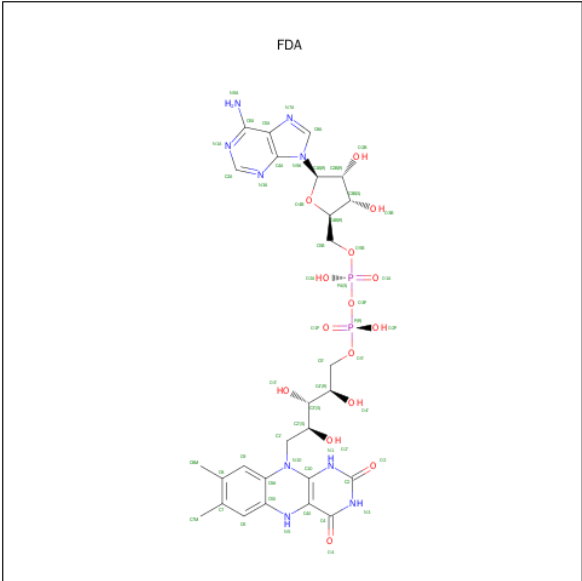
Chain	Residue	Modelled	Actual	Comment	Reference
B	-3	HIS	-	EXPRESSION TAG	UNP Q9WYT0
B	-2	HIS	-	EXPRESSION TAG	UNP Q9WYT0
B	-1	HIS	-	EXPRESSION TAG	UNP Q9WYT0
B	0	HIS	-	EXPRESSION TAG	UNP Q9WYT0
B	174	LYS	ARG	ENGINEERED MUTATION	UNP Q9WYT0
C	-11	MET	-	INITIATING METHIONINE	UNP Q9WYT0
C	-10	GLY	-	EXPRESSION TAG	UNP Q9WYT0
C	-9	SER	-	EXPRESSION TAG	UNP Q9WYT0
C	-8	ASP	-	EXPRESSION TAG	UNP Q9WYT0
C	-7	LYS	-	EXPRESSION TAG	UNP Q9WYT0
C	-6	ILE	-	EXPRESSION TAG	UNP Q9WYT0
C	-5	HIS	-	EXPRESSION TAG	UNP Q9WYT0
C	-4	HIS	-	EXPRESSION TAG	UNP Q9WYT0
C	-3	HIS	-	EXPRESSION TAG	UNP Q9WYT0
C	-2	HIS	-	EXPRESSION TAG	UNP Q9WYT0
C	-1	HIS	-	EXPRESSION TAG	UNP Q9WYT0
C	0	HIS	-	EXPRESSION TAG	UNP Q9WYT0
C	174	LYS	ARG	ENGINEERED MUTATION	UNP Q9WYT0
D	-11	MET	-	INITIATING METHIONINE	UNP Q9WYT0
D	-10	GLY	-	EXPRESSION TAG	UNP Q9WYT0
D	-9	SER	-	EXPRESSION TAG	UNP Q9WYT0
D	-8	ASP	-	EXPRESSION TAG	UNP Q9WYT0
D	-7	LYS	-	EXPRESSION TAG	UNP Q9WYT0
D	-6	ILE	-	EXPRESSION TAG	UNP Q9WYT0
D	-5	HIS	-	EXPRESSION TAG	UNP Q9WYT0
D	-4	HIS	-	EXPRESSION TAG	UNP Q9WYT0
D	-3	HIS	-	EXPRESSION TAG	UNP Q9WYT0
D	-2	HIS	-	EXPRESSION TAG	UNP Q9WYT0
D	-1	HIS	-	EXPRESSION TAG	UNP Q9WYT0
D	0	HIS	-	EXPRESSION TAG	UNP Q9WYT0
D	174	LYS	ARG	ENGINEERED MUTATION	UNP Q9WYT0

- Molecule 2 is 2'-DEOXYURIDINE-5'-MONOPHOSPHATE (three-letter code: DU) (formula: C<sub>9</sub>H<sub>13</sub>N<sub>2</sub>O<sub>8</sub>P).



Mol	Chain	Residues	Atoms					ZeroOcc	AltConf
2	A	1	Total	C	N	O	P	0	0
			20	9	2	8	1		
2	B	1	Total	C	N	O	P	0	0
			20	9	2	8	1		
2	C	1	Total	C	N	O	P	0	0
			20	9	2	8	1		
2	D	1	Total	C	N	O	P	0	0
			20	9	2	8	1		

- Molecule 3 is DIHYDROFLAVINE-ADENINE DINUCLEOTIDE (three-letter code: FDA) (formula: C<sub>27</sub>H<sub>35</sub>N<sub>9</sub>O<sub>15</sub>P<sub>2</sub>).



Mol	Chain	Residues	Atoms					ZeroOcc	AltConf
3	A	1	Total	C	N	O	P	0	0
			53	27	9	15	2		
3	B	1	Total	C	N	O	P	0	0
			53	27	9	15	2		
3	C	1	Total	C	N	O	P	0	0
			53	27	9	15	2		
3	D	1	Total	C	N	O	P	0	0
			53	27	9	15	2		

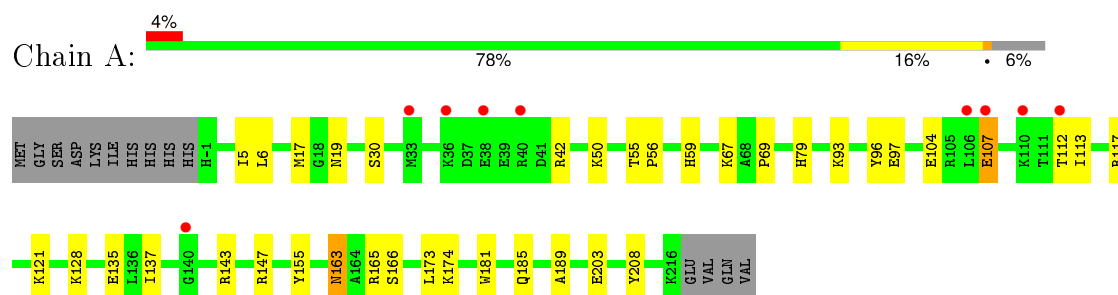
- Molecule 4 is water.

Mol	Chain	Residues	Atoms		ZeroOcc	AltConf
4	A	27	Total	O	0	0
			27	27		
4	B	22	Total	O	0	0
			22	22		
4	C	32	Total	O	0	0
			32	32		
4	D	22	Total	O	0	0
			22	22		

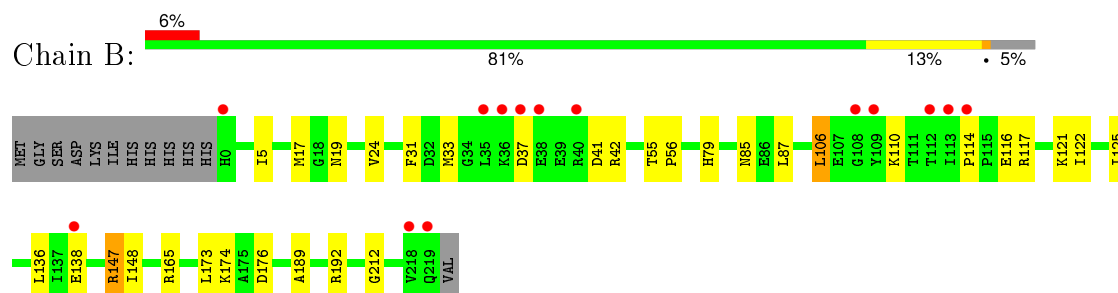
### 3 Residue-property plots [i](#)

These plots are drawn for all protein, RNA and DNA chains in the entry. The first graphic for a chain summarises the proportions of errors displayed in the second graphic. The second graphic shows the sequence view annotated by issues in geometry and electron density. Residues are color-coded according to the number of geometric quality criteria for which they contain at least one outlier: green = 0, yellow = 1, orange = 2 and red = 3 or more. A red dot above a residue indicates a poor fit to the electron density ( $RSRZ > 2$ ). Stretches of 2 or more consecutive residues without any outlier are shown as a green connector. Residues present in the sample, but not in the model, are shown in grey.

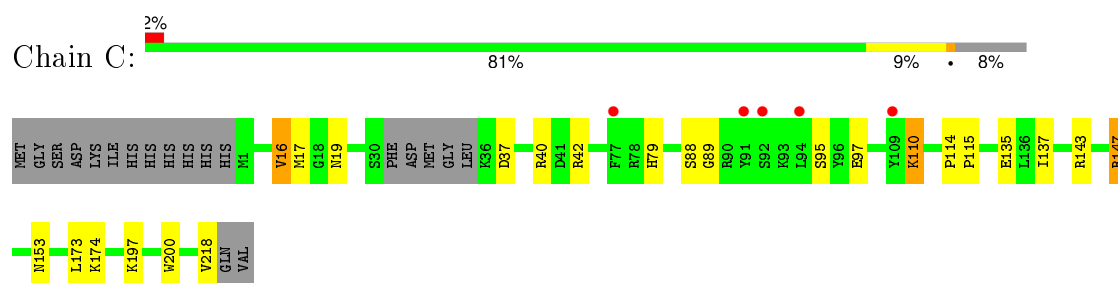
#### • Molecule 1: Thymidylate synthase



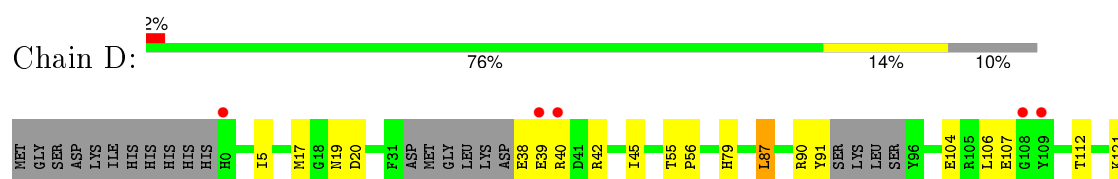
#### • Molecule 1: Thymidylate synthase



#### • Molecule 1: Thymidylate synthase



#### • Molecule 1: Thymidylate synthase



I125	E135	R143	R147	R157	R165	L173	K174	A175	D176	A189	W200	K207	G212	G218	GLN	VAL
------	------	------	------	------	------	------	------	------	------	------	------	------	------	------	-----	-----

## 4 Data and refinement statistics

Property	Value	Source
Space group	P 21 21 21	Depositor
Cell constants a, b, c, $\alpha$ , $\beta$ , $\gamma$	53.68Å 115.74Å 140.46Å 90.00° 90.00° 90.00°	Depositor
Resolution (Å)	38.58 – 2.14 38.58 – 2.14	Depositor EDS
% Data completeness (in resolution range)	99.9 (38.58-2.14) 99.9 (38.58-2.14)	Depositor EDS
$R_{merge}$	0.07	Depositor
$R_{sym}$	(Not available)	Depositor
$\langle I/\sigma(I) \rangle$ <sup>1</sup>	2.01 (at 2.14Å)	Xtriage
Refinement program	REFMAC 5.7.0029	Depositor
R, $R_{free}$	0.183 , 0.233 0.181 , 0.231	Depositor DCC
$R_{free}$ test set	2457 reflections (5.27%)	DCC
Wilson B-factor (Å <sup>2</sup> )	40.0	Xtriage
Anisotropy	0.180	Xtriage
Bulk solvent $k_{sol}$ (e/Å <sup>3</sup> ), $B_{sol}$ (Å <sup>2</sup> )	0.37 , 48.8	EDS
Estimated twinning fraction	No twinning to report.	Xtriage
L-test for twinning <sup>2</sup>	$\langle  L  \rangle = 0.49$ , $\langle L^2 \rangle = 0.32$	Xtriage
Outliers	1 of 49182 reflections (0.002%)	Xtriage
$F_o, F_c$ correlation	0.96	EDS
Total number of atoms	7606	wwPDB-VP
Average B, all atoms (Å <sup>2</sup> )	45.0	wwPDB-VP

Xtriage's analysis on translational NCS is as follows: *The largest off-origin peak in the Patterson function is 3.94% of the height of the origin peak. No significant pseudotranslation is detected.*

<sup>1</sup>Intensities estimated from amplitudes.

<sup>2</sup>Theoretical values of  $\langle |L| \rangle$ ,  $\langle L^2 \rangle$  for acentric reflections are 0.5, 0.375 respectively for untwinned datasets, and 0.333, 0.2 for perfectly twinned datasets.

## 5 Model quality

### 5.1 Standard geometry

Bond lengths and bond angles in the following residue types are not validated in this section: FDA

The Z score for a bond length (or angle) is the number of standard deviations the observed value is removed from the expected value. A bond length (or angle) with  $|Z| > 5$  is considered an outlier worth inspection. RMSZ is the root-mean-square of all Z scores of the bond lengths (or angles).

Mol	Chain	Bond lengths		Bond angles	
		RMSZ	$\# Z  > 5$	RMSZ	$\# Z  > 5$
1	A	0.70	0/1888	0.80	0/2551
1	B	0.69	0/1891	0.79	1/2556 (0.0%)
1	C	0.73	0/1830	0.81	1/2473 (0.0%)
1	D	0.67	0/1800	0.75	0/2433
All	All	0.70	0/7409	0.79	2/10013 (0.0%)

Chiral center outliers are detected by calculating the chiral volume of a chiral center and verifying if the center is modelled as a planar moiety or with the opposite hand. A planarity outlier is detected by checking planarity of atoms in a peptide group, atoms in a mainchain group or atoms of a sidechain that are expected to be planar.

Mol	Chain	#Chirality outliers	#Planarity outliers
1	C	0	1

There are no bond length outliers.

All (2) bond angle outliers are listed below:

Mol	Chain	Res	Type	Atoms	Z	Observed( $^{\circ}$ )	Ideal( $^{\circ}$ )
1	B	147	ARG	NE-CZ-NH2	-5.26	117.67	120.30
1	C	37	ASP	CB-CG-OD1	5.22	123.00	118.30

There are no chirality outliers.

All (1) planarity outliers are listed below:

Mol	Chain	Res	Type	Group
1	C	88	SER	Peptide

## 5.2 Too-close contacts ⓘ

In the following table, the Non-H and H(model) columns list the number of non-hydrogen atoms and hydrogen atoms in the chain respectively. The H(added) column lists the number of hydrogen atoms added and optimized by MolProbity. The Clashes column lists the number of clashes within the asymmetric unit, whereas Symm-Clashes lists symmetry related clashes.

Mol	Chain	Non-H	H(model)	H(added)	Clashes	Symm-Clashes
1	A	1834	0	1834	29	0
1	B	1841	0	1837	19	0
1	C	1783	0	1785	17	0
1	D	1753	0	1744	19	0
2	A	20	0	11	1	0
2	B	20	0	11	0	0
2	C	20	0	11	3	0
2	D	20	0	11	1	0
3	A	53	0	33	3	0
3	B	53	0	33	4	0
3	C	53	0	33	4	0
3	D	53	0	33	2	0
4	A	27	0	0	1	0
4	B	22	0	0	1	0
4	C	32	0	0	2	0
4	D	22	0	0	1	0
All	All	7606	0	7376	82	0

The all-atom clashscore is defined as the number of clashes found per 1000 atoms (including hydrogen atoms). The all-atom clashscore for this structure is 6.

All (82) close contacts within the same asymmetric unit are listed below, sorted by their clash magnitude.

Atom-1	Atom-2	Interatomic distance (Å)	Clash overlap (Å)
1:A:79:HIS:NE2	1:A:174:LYS:NZ	2.25	0.85
1:C:17:MET:HB2	1:D:17:MET:HB2	1.64	0.79
1:A:17:MET:HB2	1:B:17:MET:HB2	1.66	0.76
1:C:89:GLY:HA3	2:C:302:DU:OP3	1.87	0.75
3:B:302:FDA:N7A	4:C:401:HOH:O	2.22	0.72
1:A:5:ILE:HD11	1:A:189:ALA:HB2	1.72	0.70
1:A:107:GLU:OE1	1:A:107:GLU:HA	1.92	0.68
1:C:19:ASN:HB2	4:C:404:HOH:O	1.95	0.66
1:A:121:LYS:HE3	1:D:135:GLU:OE2	1.99	0.63
1:B:121:LYS:HE3	1:C:135:GLU:OE2	2.00	0.62
1:B:19:ASN:HB2	4:B:416:HOH:O	2.02	0.59

*Continued on next page...*

*Continued from previous page...*

Atom-1	Atom-2	Interatomic distance (Å)	Clash overlap (Å)
1:D:91:TYR:HA	1:D:143:ARG:HH21	1.67	0.58
1:B:79:HIS:NE2	1:B:174:LYS:NZ	2.40	0.58
1:D:90:ARG:HG3	2:D:302:DU:OP2	2.04	0.58
1:A:163:ASN:HD22	1:A:163:ASN:C	2.07	0.58
1:B:165:ARG:CZ	3:D:301:FDA:H2B	2.35	0.57
1:C:218:VAL:O	1:C:218:VAL:HG12	2.04	0.57
1:D:42:ARG:HG2	1:D:200:TRP:CD2	2.40	0.56
1:C:16:VAL:HG11	1:C:197:LYS:HD2	1.88	0.56
1:D:19:ASN:HB2	4:D:422:HOH:O	2.05	0.56
2:C:302:DU:H6	2:C:302:DU:O5'	2.07	0.55
1:A:137:ILE:HD11	1:A:143:ARG:HA	1.88	0.55
1:B:173:LEU:HB3	3:B:302:FDA:HM81	1.88	0.54
1:A:42:ARG:NH2	1:A:203:GLU:OE1	2.41	0.53
1:D:104:GLU:HA	1:D:107:GLU:HG2	1.91	0.51
1:B:114:PRO:HG2	1:B:117:ARG:HG2	1.93	0.51
1:A:113:ILE:HD12	1:A:117:ARG:CB	2.41	0.51
1:D:173:LEU:HB3	3:D:301:FDA:HM81	1.92	0.50
1:A:93:LYS:HB2	1:A:143:ARG:NH1	2.26	0.50
1:D:106:LEU:N	1:D:106:LEU:HD22	2.27	0.49
1:D:79:HIS:CD2	1:D:174:LYS:HZ3	2.27	0.49
1:B:122:ILE:O	1:B:125:ILE:HG22	2.12	0.49
1:C:79:HIS:NE2	1:C:174:LYS:NZ	2.44	0.49
1:A:5:ILE:HG22	1:A:6:LEU:HG	1.94	0.49
1:A:104:GLU:O	1:A:107:GLU:HG2	2.13	0.49
1:D:176:ASP:OD1	1:D:212:GLY:HA2	2.13	0.48
1:A:55:THR:OG1	1:A:56:PRO:HD3	2.13	0.48
1:A:113:ILE:HD12	1:A:117:ARG:HB2	1.95	0.48
1:B:117:ARG:HH21	1:B:121:LYS:NZ	2.12	0.48
1:A:112:THR:HG22	1:A:113:ILE:HG23	1.96	0.48
1:C:173:LEU:HD13	3:C:301:FDA:O4'	2.14	0.48
1:A:163:ASN:ND2	1:A:166:SER:H	2.13	0.47
1:B:5:ILE:HD11	1:B:189:ALA:HB2	1.97	0.47
3:B:302:FDA:H2B	1:D:165:ARG:CZ	2.45	0.46
1:A:107:GLU:CA	1:A:107:GLU:OE1	2.63	0.46
1:A:181:TRP:O	1:A:185:GLN:HG2	2.16	0.46
1:B:148:ILE:HB	1:C:153:ASN:HB3	1.96	0.46
1:A:173:LEU:HB3	3:A:302:FDA:HM81	1.97	0.46
1:D:20:ASP:HB3	1:D:45:ILE:CD1	2.45	0.46
1:A:19:ASN:HB2	4:A:419:HOH:O	2.15	0.46
1:B:31:PHE:HB2	1:B:33:MET:HE2	1.97	0.46
1:B:176:ASP:OD1	1:B:212:GLY:HA2	2.16	0.45

*Continued on next page...*

*Continued from previous page...*

Atom-1	Atom-2	Interatomic distance (Å)	Clash overlap (Å)
1:D:87:LEU:HD22	1:D:157:ARG:HB2	1.98	0.45
1:D:5:ILE:HD11	1:D:189:ALA:HB2	1.99	0.45
1:C:110:LYS:HE2	1:C:110:LYS:HB2	1.68	0.44
1:A:135:GLU:OE2	1:D:121:LYS:NZ	2.41	0.44
1:B:114:PRO:HG2	1:B:117:ARG:CG	2.48	0.43
2:C:302:DU:C5'	2:C:302:DU:H6	2.48	0.43
1:A:50:LYS:HE3	1:A:208:TYR:CZ	2.54	0.43
1:C:218:VAL:O	1:C:218:VAL:CG1	2.67	0.43
1:C:173:LEU:HB3	3:C:301:FDA:HM81	1.99	0.43
3:A:302:FDA:H1'2	3:A:302:FDA:H9	1.77	0.43
1:A:30:SER:HG	3:C:301:FDA:C4	2.32	0.42
1:C:143:ARG:O	1:C:147:ARG:HG3	2.20	0.42
1:A:59:HIS:NE2	1:B:85:ASN:ND2	2.62	0.42
1:A:69:PRO:HD3	1:A:155:TYR:CE1	2.54	0.42
1:B:55:THR:N	1:B:56:PRO:CD	2.82	0.42
1:C:42:ARG:HG2	1:C:200:TRP:CD2	2.55	0.42
1:C:137:ILE:HD13	1:C:137:ILE:HA	1.83	0.42
1:D:125:ILE:HD13	1:D:125:ILE:HA	1.78	0.42
1:B:136:LEU:HD23	1:B:136:LEU:HA	1.86	0.42
1:A:165:ARG:CZ	3:C:301:FDA:H2B	2.50	0.42
1:A:67:LYS:NZ	1:A:97:GLU:OE2	2.44	0.42
1:C:114:PRO:HA	1:C:115:PRO:HD2	1.76	0.42
3:B:302:FDA:H1'2	3:B:302:FDA:H9	1.82	0.41
1:C:95:SER:HB3	1:C:97:GLU:HG3	2.03	0.41
1:B:24:VAL:HG21	1:B:41:ASP:HB3	2.01	0.41
1:A:173:LEU:HD13	3:A:302:FDA:O4'	2.20	0.41
1:D:55:THR:OG1	1:D:56:PRO:HD3	2.21	0.41
1:A:128:LYS:HG3	1:D:125:ILE:HD11	2.03	0.41
1:B:106:LEU:HD13	1:B:106:LEU:HA	1.87	0.41
2:A:301:DU:H6	2:A:301:DU:O5'	2.21	0.41

There are no symmetry-related clashes.

## 5.3 Torsion angles ⓘ

### 5.3.1 Protein backbone ⓘ

In the following table, the Percentiles column shows the percent Ramachandran outliers of the chain as a percentile score with respect to all X-ray entries followed by that with respect to entries of similar resolution.

The Analysed column shows the number of residues for which the backbone conformation was analysed, and the total number of residues.

Mol	Chain	Analysed	Favoured	Allowed	Outliers	Percentiles	
1	A	217/232 (94%)	208 (96%)	9 (4%)	0	100	100
1	B	218/232 (94%)	212 (97%)	6 (3%)	0	100	100
1	C	209/232 (90%)	201 (96%)	8 (4%)	0	100	100
1	D	203/232 (88%)	199 (98%)	4 (2%)	0	100	100
All	All	847/928 (91%)	820 (97%)	27 (3%)	0	100	100

There are no Ramachandran outliers to report.

### 5.3.2 Protein sidechains ⓘ

In the following table, the Percentiles column shows the percent sidechain outliers of the chain as a percentile score with respect to all X-ray entries followed by that with respect to entries of similar resolution.

The Analysed column shows the number of residues for which the sidechain conformation was analysed, and the total number of residues.

Mol	Chain	Analysed	Rotameric	Outliers	Percentiles	
1	A	195/207 (94%)	191 (98%)	4 (2%)	61	64
1	B	196/207 (95%)	187 (95%)	9 (5%)	33	28
1	C	190/207 (92%)	186 (98%)	4 (2%)	61	64
1	D	185/207 (89%)	178 (96%)	7 (4%)	40	37
All	All	766/828 (92%)	742 (97%)	24 (3%)	47	46

All (24) residues with a non-rotameric sidechain are listed below:

Mol	Chain	Res	Type
1	A	96	TYR
1	A	107	GLU
1	A	147	ARG
1	A	163	ASN
1	B	37	ASP
1	B	42	ARG
1	B	87	LEU
1	B	106	LEU
1	B	110	LYS
1	B	116	GLU

*Continued on next page...*

*Continued from previous page...*

Mol	Chain	Res	Type
1	B	138	GLU
1	B	147	ARG
1	B	192	ARG
1	C	16	VAL
1	C	40	ARG
1	C	110	LYS
1	C	147	ARG
1	D	38	GLU
1	D	39	GLU
1	D	40	ARG
1	D	87	LEU
1	D	112	THR
1	D	147	ARG
1	D	207	LYS

Some sidechains can be flipped to improve hydrogen bonding and reduce clashes. All (6) such sidechains are listed below:

Mol	Chain	Res	Type
1	A	75	GLN
1	A	163	ASN
1	B	85	ASN
1	C	51	HIS
1	C	185	GLN
1	D	85	ASN

### 5.3.3 RNA ⓘ

There are no RNA molecules in this entry.

## 5.4 Non-standard residues in protein, DNA, RNA chains ⓘ

There are no non-standard protein/DNA/RNA residues in this entry.

## 5.5 Carbohydrates ⓘ

There are no carbohydrates in this entry.

## 5.6 Ligand geometry

8 ligands are modelled in this entry.

In the following table, the Counts columns list the number of bonds (or angles) for which Mogul statistics could be retrieved, the number of bonds (or angles) that are observed in the model and the number of bonds (or angles) that are defined in the chemical component dictionary. The Link column lists molecule types, if any, to which the group is linked. The Z score for a bond length (or angle) is the number of standard deviations the observed value is removed from the expected value. A bond length (or angle) with  $|Z| > 2$  is considered an outlier worth inspection. RMSZ is the root-mean-square of all Z scores of the bond lengths (or angles).

Mol	Type	Chain	Res	Link	Bond lengths			Bond angles		
					Counts	RMSZ	# Z  > 2	Counts	RMSZ	# Z  > 2
2	DU	A	301	-	16,21,21	0.68	0	23,31,31	1.49	2 (8%)
3	FDA	A	302	-	48,58,58	3.22	15 (31%)	54,89,89	2.88	13 (24%)
2	DU	B	301	-	16,21,21	0.65	0	23,31,31	2.06	3 (13%)
3	FDA	B	302	-	48,58,58	3.21	14 (29%)	54,89,89	2.55	13 (24%)
3	FDA	C	301	-	48,58,58	3.17	15 (31%)	54,89,89	2.51	13 (24%)
2	DU	C	302	-	16,21,21	0.68	0	23,31,31	1.64	3 (13%)
3	FDA	D	301	-	48,58,58	3.03	16 (33%)	54,89,89	2.34	15 (27%)
2	DU	D	302	-	16,21,21	0.70	0	23,31,31	1.65	2 (8%)

In the following table, the Chirals column lists the number of chiral outliers, the number of chiral centers analysed, the number of these observed in the model and the number defined in the chemical component dictionary. Similar counts are reported in the Torsion and Rings columns. '-' means no outliers of that kind were identified.

Mol	Type	Chain	Res	Link	Chirals	Torsions	Rings
2	DU	A	301	-	-	0/6/22/22	0/2/2/2
3	FDA	A	302	-	-	0/30/50/50	0/6/6/6
2	DU	B	301	-	-	0/6/22/22	0/2/2/2
3	FDA	B	302	-	-	0/30/50/50	0/6/6/6
3	FDA	C	301	-	-	0/30/50/50	0/6/6/6
2	DU	C	302	-	-	0/6/22/22	0/2/2/2
3	FDA	D	301	-	-	0/30/50/50	0/6/6/6
2	DU	D	302	-	-	0/6/22/22	0/2/2/2

All (60) bond length outliers are listed below:

Mol	Chain	Res	Type	Atoms	Z	Observed(Å)	Ideal(Å)
3	D	301	FDA	C9A-N10	-6.57	1.29	1.38
3	B	302	FDA	C9A-N10	-6.44	1.29	1.38

*Continued on next page...*

*Continued from previous page...*

Mol	Chain	Res	Type	Atoms	Z	Observed(Å)	Ideal(Å)
3	C	301	FDA	C9A-N10	-6.38	1.30	1.38
3	A	302	FDA	C9A-N10	-5.95	1.30	1.38
3	A	302	FDA	PA-O1A	2.00	1.58	1.51
3	D	301	FDA	PA-O1A	2.04	1.58	1.51
3	A	302	FDA	O4B-C1B	2.29	1.44	1.41
3	D	301	FDA	C2A-N3A	2.29	1.36	1.32
3	C	301	FDA	O4B-C1B	2.42	1.44	1.41
3	C	301	FDA	PA-O1A	2.56	1.60	1.51
3	B	302	FDA	O4B-C1B	2.57	1.44	1.41
3	D	301	FDA	O4B-C1B	2.93	1.44	1.41
3	C	301	FDA	C9-C9A	3.63	1.48	1.40
3	B	302	FDA	C5A-C4A	3.82	1.49	1.40
3	D	301	FDA	C8-C7	3.84	1.51	1.41
3	A	302	FDA	C9-C9A	3.92	1.49	1.40
3	B	302	FDA	C9-C9A	4.03	1.49	1.40
3	D	301	FDA	C5A-C4A	4.03	1.49	1.40
3	D	301	FDA	C9-C9A	4.05	1.49	1.40
3	A	302	FDA	C5A-C4A	4.05	1.49	1.40
3	A	302	FDA	C8-C7	4.15	1.52	1.41
3	C	301	FDA	C8-C7	4.21	1.52	1.41
3	B	302	FDA	C8-C7	4.22	1.52	1.41
3	C	301	FDA	C4-C4X	4.39	1.50	1.41
3	D	301	FDA	C4-C4X	4.42	1.50	1.41
3	C	301	FDA	C5A-C4A	4.43	1.50	1.40
3	B	302	FDA	C4-C4X	4.48	1.50	1.41
3	A	302	FDA	C4-C4X	4.54	1.50	1.41
3	D	301	FDA	C9A-C5X	4.95	1.52	1.42
3	C	301	FDA	C9A-C5X	5.11	1.53	1.42
3	C	301	FDA	C6-C7	5.15	1.52	1.37
3	A	302	FDA	C9A-C5X	5.17	1.53	1.42
3	D	301	FDA	C6-C7	5.25	1.52	1.37
3	B	302	FDA	C6-C7	5.34	1.52	1.37
3	B	302	FDA	C9A-C5X	5.34	1.53	1.42
3	A	302	FDA	C6-C7	5.36	1.52	1.37
3	D	301	FDA	C5X-N5	5.69	1.44	1.35
3	D	301	FDA	C4X-C10	5.71	1.51	1.41
3	C	301	FDA	C4X-C10	5.97	1.52	1.41
3	B	302	FDA	C4X-C10	6.05	1.52	1.41
3	D	301	FDA	C10-N10	6.09	1.46	1.39
3	A	302	FDA	C4X-C10	6.33	1.52	1.41
3	B	302	FDA	C5X-N5	6.44	1.45	1.35
3	D	301	FDA	C4X-N5	6.46	1.43	1.33

*Continued on next page...*

*Continued from previous page...*

Mol	Chain	Res	Type	Atoms	Z	Observed(Å)	Ideal(Å)
3	D	301	FDA	C10-N1	6.48	1.46	1.35
3	A	302	FDA	C5X-N5	6.58	1.45	1.35
3	C	301	FDA	C5X-N5	6.58	1.45	1.35
3	C	301	FDA	C10-N10	6.67	1.46	1.39
3	B	302	FDA	C4X-N5	6.99	1.44	1.33
3	B	302	FDA	C10-N10	7.10	1.47	1.39
3	A	302	FDA	C10-N10	7.19	1.47	1.39
3	C	301	FDA	C10-N1	7.27	1.47	1.35
3	B	302	FDA	C10-N1	7.33	1.47	1.35
3	C	301	FDA	C4X-N5	7.41	1.45	1.33
3	C	301	FDA	C6-C5X	7.45	1.53	1.41
3	A	302	FDA	C6-C5X	7.52	1.53	1.41
3	A	302	FDA	C10-N1	7.55	1.48	1.35
3	A	302	FDA	C4X-N5	7.73	1.45	1.33
3	D	301	FDA	C6-C5X	7.73	1.53	1.41
3	B	302	FDA	C6-C5X	8.17	1.54	1.41

All (64) bond angle outliers are listed below:

Mol	Chain	Res	Type	Atoms	Z	Observed(°)	Ideal(°)
3	A	302	FDA	N3A-C2A-N1A	-9.22	121.83	128.89
3	D	301	FDA	N3A-C2A-N1A	-7.30	123.31	128.89
3	C	301	FDA	N3A-C2A-N1A	-7.15	123.42	128.89
3	A	302	FDA	C4-C4X-C10	-7.08	115.41	119.94
3	B	302	FDA	N3A-C2A-N1A	-6.67	123.78	128.89
3	B	302	FDA	C4-C4X-C10	-6.25	115.94	119.94
3	C	301	FDA	C4-C4X-C10	-5.88	116.18	119.94
3	C	301	FDA	C4X-C4-N3	-4.07	118.02	123.59
3	A	302	FDA	C4X-C4-N3	-4.02	118.09	123.59
3	D	301	FDA	C4-C4X-C10	-4.00	117.38	119.94
3	D	301	FDA	C4X-C4-N3	-3.97	118.16	123.59
3	C	301	FDA	P-O3P-PA	-3.59	122.66	132.73
3	B	302	FDA	C4A-C5A-N7A	-3.58	106.18	109.48
3	B	302	FDA	C4X-C4-N3	-3.50	118.80	123.59
3	A	302	FDA	P-O3P-PA	-3.40	123.18	132.73
2	B	301	DU	O5'-P-OP1	-3.29	98.76	107.14
3	D	301	FDA	C7-C6-C5X	-3.11	115.85	120.92
3	A	302	FDA	C4A-C5A-N7A	-3.08	106.64	109.48
3	D	301	FDA	C4A-C5A-N7A	-3.00	106.72	109.48
3	B	302	FDA	P-O3P-PA	-2.98	124.37	132.73
3	A	302	FDA	O3P-PA-O5B	-2.82	95.45	102.94
3	B	302	FDA	C7-C6-C5X	-2.60	116.67	120.92

*Continued on next page...*

*Continued from previous page...*

Mol	Chain	Res	Type	Atoms	Z	Observed(°)	Ideal(°)
3	C	301	FDA	C4A-C5A-N7A	-2.54	107.15	109.48
3	B	302	FDA	O3P-PA-O5B	-2.39	96.60	102.94
3	D	301	FDA	P-O3P-PA	-2.37	126.08	132.73
3	A	302	FDA	O3P-P-O5'	-2.35	96.69	102.94
3	C	301	FDA	C7-C6-C5X	-2.32	117.13	120.92
2	C	302	DU	OP3-P-O5'	-2.31	99.92	106.56
2	A	301	DU	C2'-C1'-N1	-2.27	108.65	114.16
2	B	301	DU	C2'-C1'-N1	-2.22	108.77	114.16
3	A	302	FDA	O2A-PA-O1A	2.05	123.66	112.53
3	D	301	FDA	C6-C5X-C9A	2.10	121.75	118.98
3	C	301	FDA	C2B-C1B-N9A	2.13	117.55	114.29
2	C	302	DU	OP3-P-OP1	2.26	117.86	110.58
3	D	301	FDA	C4B-O4B-C1B	2.33	112.28	109.72
3	C	301	FDA	C1'-N10-C9A	2.35	121.50	118.86
3	B	302	FDA	C4B-O4B-C1B	2.38	112.33	109.72
3	D	301	FDA	O2A-PA-O1A	2.40	125.54	112.53
3	D	301	FDA	C2B-C1B-N9A	2.48	118.08	114.29
3	C	301	FDA	C2A-N1A-C6A	2.53	123.29	118.77
2	D	302	DU	O4'-C1'-N1	2.53	112.10	107.72
3	B	302	FDA	C1'-N10-C9A	2.54	121.71	118.86
3	D	301	FDA	O4B-C1B-N9A	2.75	113.85	108.10
3	A	302	FDA	C2B-C1B-N9A	2.87	118.67	114.29
3	C	301	FDA	O2A-PA-O1A	2.89	128.19	112.53
3	B	302	FDA	C2B-C1B-N9A	2.96	118.82	114.29
3	A	302	FDA	C2A-N1A-C6A	3.02	124.17	118.77
3	D	301	FDA	C1'-N10-C9A	4.06	123.41	118.86
3	D	301	FDA	C4-C4X-N5	4.14	123.74	118.72
3	C	301	FDA	C4-C4X-N5	4.48	124.16	118.72
3	A	302	FDA	C4-C4X-N5	4.79	124.53	118.72
3	B	302	FDA	C4-C4X-N5	4.92	124.69	118.72
3	D	301	FDA	C5X-C9A-N10	4.95	121.38	117.62
3	C	301	FDA	C5X-C9A-N10	5.52	121.81	117.62
2	A	301	DU	C4-N3-C2	5.77	119.85	114.14
3	B	302	FDA	C5X-C9A-N10	6.00	122.18	117.62
2	C	302	DU	C4-N3-C2	6.17	120.26	114.14
2	D	302	DU	C4-N3-C2	6.44	120.52	114.14
3	A	302	FDA	C5X-C9A-N10	6.67	122.69	117.62
3	D	301	FDA	C4-N3-C2	8.22	122.35	115.25
2	B	301	DU	C4-N3-C2	8.24	122.31	114.14
3	B	302	FDA	C4-N3-C2	10.17	124.04	115.25
3	C	301	FDA	C4-N3-C2	10.21	124.07	115.25
3	A	302	FDA	C4-N3-C2	11.40	125.11	115.25

There are no chirality outliers.

There are no torsion outliers.

There are no ring outliers.

7 monomers are involved in 18 short contacts:

Mol	Chain	Res	Type	Clashes	Symm-Clashes
2	A	301	DU	1	0
3	A	302	FDA	3	0
3	B	302	FDA	4	0
3	C	301	FDA	4	0
2	C	302	DU	3	0
3	D	301	FDA	2	0
2	D	302	DU	1	0

## 5.7 Other polymers [i](#)

There are no such residues in this entry.

## 5.8 Polymer linkage issues [i](#)

There are no chain breaks in this entry.

## 6 Fit of model and data

### 6.1 Protein, DNA and RNA chains

In the following table, the column labelled ‘#RSRZ> 2’ contains the number (and percentage) of RSRZ outliers, followed by percent RSRZ outliers for the chain as percentile scores relative to all X-ray entries and entries of similar resolution. The OWAB column contains the minimum, median, 95<sup>th</sup> percentile and maximum values of the occupancy-weighted average B-factor per residue. The column labelled ‘Q< 0.9’ lists the number of (and percentage) of residues with an average occupancy less than 0.9.

Mol	Chain	Analysed	<RSRZ>	#RSRZ>2	OWAB(Å <sup>2</sup> )	Q<0.9
1	A	218/232 (93%)	0.12	9 (4%) 41 50	29, 42, 65, 87	0
1	B	220/232 (94%)	0.13	14 (6%) 23 30	31, 42, 74, 99	0
1	C	213/232 (91%)	-0.08	5 (2%) 64 71	29, 40, 68, 80	0
1	D	209/232 (90%)	-0.01	5 (2%) 62 69	30, 40, 68, 90	0
All	All	860/928 (92%)	0.04	33 (3%) 44 54	29, 41, 68, 99	0

All (33) RSRZ outliers are listed below:

Mol	Chain	Res	Type	RSRZ
1	D	108	GLY	5.7
1	A	40	ARG	4.3
1	B	38	GLU	3.9
1	D	40	ARG	3.8
1	B	40	ARG	3.8
1	B	219	GLN	3.4
1	D	39	GLU	3.4
1	D	109	TYR	3.3
1	B	35	LEU	3.2
1	A	38	GLU	3.2
1	C	91	TYR	3.0
1	C	94	LEU	2.9
1	B	112	THR	2.8
1	A	107	GLU	2.7
1	C	92	SER	2.7
1	B	138	GLU	2.6
1	A	112	THR	2.6
1	B	109	TYR	2.6
1	A	36	LYS	2.6
1	B	36	LYS	2.5
1	B	108	GLY	2.5

*Continued on next page...*

*Continued from previous page...*

Mol	Chain	Res	Type	RSRZ
1	D	0	HIS	2.4
1	B	113	ILE	2.3
1	A	106	LEU	2.3
1	C	109	TYR	2.2
1	A	33	MET	2.2
1	A	110	LYS	2.2
1	B	37	ASP	2.2
1	B	114	PRO	2.1
1	B	0	HIS	2.0
1	B	218	VAL	2.0
1	C	77	PHE	2.0
1	A	140	GLY	2.0

## 6.2 Non-standard residues in protein, DNA, RNA chains [i](#)

There are no non-standard protein/DNA/RNA residues in this entry.

## 6.3 Carbohydrates [i](#)

There are no carbohydrates in this entry.

## 6.4 Ligands [i](#)

In the following table, the Atoms column lists the number of modelled atoms in the group and the number defined in the chemical component dictionary. LLDF column lists the quality of electron density of the group with respect to its neighbouring residues in protein, DNA or RNA chains. The B-factors column lists the minimum, median, 95<sup>th</sup> percentile and maximum values of B factors of atoms in the group. The column labelled 'Q< 0.9' lists the number of atoms with occupancy less than 0.9.

Mol	Type	Chain	Res	Atoms	RSCC	RSR	LLDF	B-factors(Å <sup>2</sup> )	Q<0.9
3	FDA	B	302	53/53	0.89	0.16	0.44	39,64,77,86	0
2	DU	D	302	20/20	0.93	0.13	0.26	44,51,71,77	0
3	FDA	C	301	53/53	0.91	0.14	0.26	35,60,69,74	0
3	FDA	A	302	53/53	0.91	0.15	0.26	40,61,83,85	0
3	FDA	D	301	53/53	0.90	0.15	0.18	35,60,69,82	0
2	DU	A	301	20/20	0.97	0.12	-0.10	37,43,58,60	0
2	DU	B	301	20/20	0.97	0.12	-0.13	37,43,51,52	0
2	DU	C	302	20/20	0.95	0.13	-0.19	46,55,69,82	0

## 6.5 Other polymers

There are no such residues in this entry.