



Full wwPDB X-ray Structure Validation Report ⓘ

Feb 1, 2016 – 06:02 PM GMT

PDB ID : 4KCR
Title : Structure of bovine endothelial nitric oxide synthase heme domain in complex with N-(3-(((3-fluorophenethyl)amino)methyl)phenyl)thiophene-2-carboximidamide
Authors : Li, H.; Poulos, T.L.
Deposited on : 2013-04-24
Resolution : 2.09 Å(reported)

This is a Full wwPDB X-ray Structure Validation Report for a publicly released PDB entry.
We welcome your comments at validation@mail.wwpdb.org
A user guide is available at
<http://wwpdb.org/validation/2016/XrayValidationReportHelp>
with specific help available everywhere you see the ⓘ symbol.

The following versions of software and data (see [references ⓘ](#)) were used in the production of this report:

MolProbity : 4.02b-467
Mogul : 1.7 (RC4), CSD as536be (2015)
Xtriage (Phenix) : 1.9-1692
EDS : rb-20026688
Percentile statistics : 20151230.v01 (using entries in the PDB archive December 30th 2015)
Refmac : 5.8.0135
CCP4 : 6.5.0
Ideal geometry (proteins) : Engh & Huber (2001)
Ideal geometry (DNA, RNA) : Parkinson et al. (1996)
Validation Pipeline (wwPDB-VP) : trunk26865

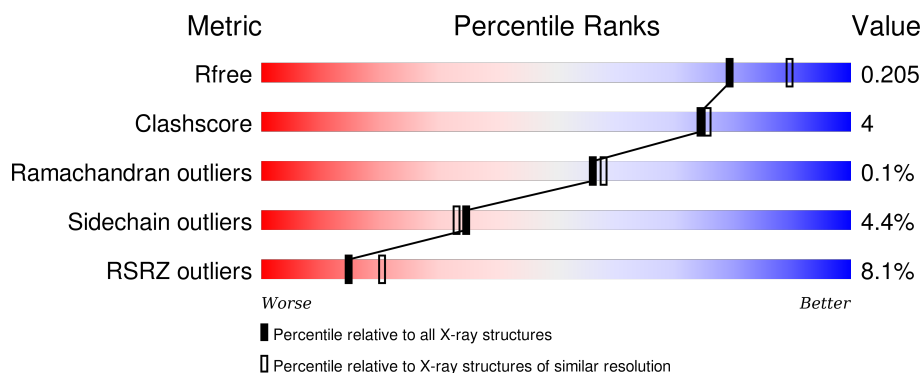
1 Overall quality at a glance

The following experimental techniques were used to determine the structure:

X-RAY DIFFRACTION

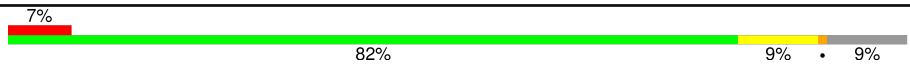

The reported resolution of this entry is 2.09 Å.

Percentile scores (ranging between 0-100) for global validation metrics of the entry are shown in the following graphic. The table shows the number of entries on which the scores are based.



Metric	Whole archive (#Entries)	Similar resolution (#Entries, resolution range(Å))
R_{free}	91344	3939 (2.10-2.10)
Clashscore	102246	4460 (2.10-2.10)
Ramachandran outliers	100387	4413 (2.10-2.10)
Sidechain outliers	100360	4414 (2.10-2.10)
RSRZ outliers	91569	3948 (2.10-2.10)

The table below summarises the geometric issues observed across the polymeric chains and their fit to the electron density. The red, orange, yellow and green segments on the lower bar indicate the fraction of residues that contain outliers for ≥ 3 , 2, 1 and 0 types of geometric quality criteria. A grey segment represents the fraction of residues that are not modelled. The numeric value for each fraction is indicated below the corresponding segment, with a dot representing fractions $\leq 5\%$. The upper red bar (where present) indicates the fraction of residues that have poor fit to the electron density. The numeric value is given above the bar.

Mol	Chain	Length	Quality of chain
1	A	443	
1	B	443	

The following table lists non-polymeric compounds, carbohydrate monomers and non-standard residues in protein, DNA, RNA chains that are outliers for geometric or electron-density-fit criteria:

Mol	Type	Chain	Res	Chirality	Geometry	Clashes	Electron density
5	ACT	B	504	-	-	-	X
6	GOL	A	506	-	-	-	X

2 Entry composition [i](#)

There are 8 unique types of molecules in this entry. The entry contains 6996 atoms, of which 0 are hydrogens and 0 are deuteriums.

In the tables below, the ZeroOcc column contains the number of atoms modelled with zero occupancy, the AltConf column contains the number of residues with at least one atom in alternate conformation and the Trace column contains the number of residues modelled with at most 2 atoms.

- Molecule 1 is a protein called Nitric oxide synthase, endothelial.

Mol	Chain	Residues	Atoms						ZeroOcc	AltConf	Trace
1	A	405	Total	As	C	N	O	S	0	1	0
			3231	1	2054	571	589	16			
1	B	403	Total	As	C	N	O	S	0	0	0
			3212	1	2042	566	587	16			

There are 2 discrepancies between the modelled and reference sequences:

Chain	Residue	Modelled	Actual	Comment	Reference
A	100	ARG	CYS	CONFLICT	UNP P29473
B	100	ARG	CYS	CONFLICT	UNP P29473

- Molecule 2 is PROTOPORPHYRIN IX CONTAINING FE (three-letter code: HEM) (formula: $C_{34}H_{32}FeN_4O_4$).



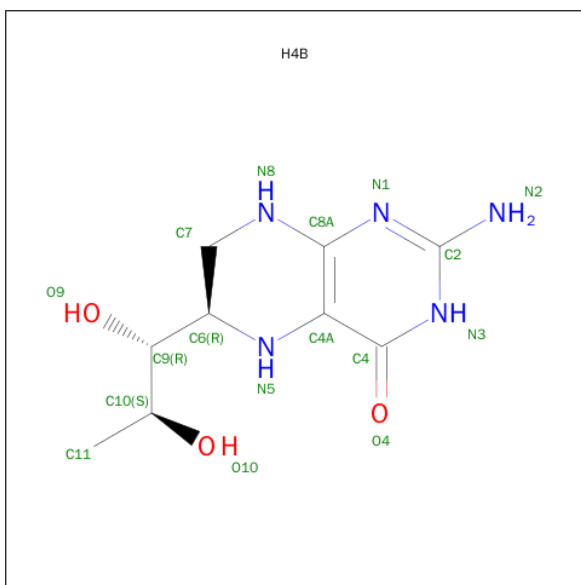
Mol	Chain	Residues	Atoms					ZeroOcc	AltConf
2	A	1	Total	C	Fe	N	O	0	0
			43	34	1	4	4		

Continued on next page...

Continued from previous page...

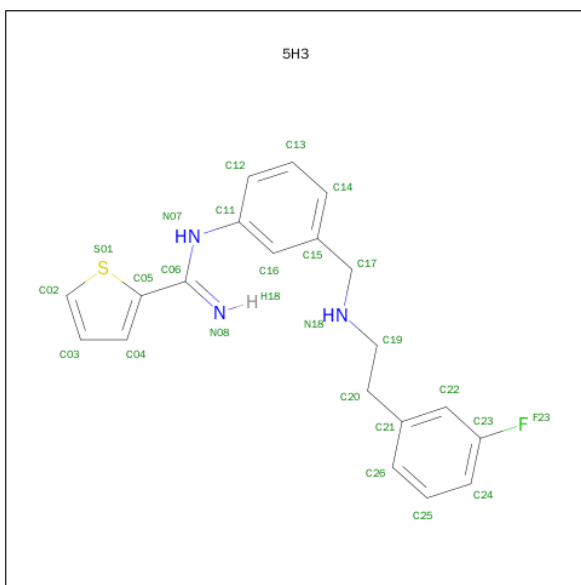
Mol	Chain	Residues	Atoms					ZeroOcc	AltConf
2	B	1	Total	C	Fe	N	O	0	0
			43	34	1	4	4		

- Molecule 3 is 5,6,7,8-TETRAHYDROBIOPTERIN (three-letter code: H4B) (formula: $C_9H_{15}N_5O_3$).



Mol	Chain	Residues	Atoms				ZeroOcc	AltConf
3	A	1	Total	C	N	O	0	0
			17	9	5	3		
3	B	1	Total	C	N	O	0	0
			17	9	5	3		

- Molecule 4 is N-[3-({[2-(3-FLUOROPHENYL)ETHYL]AMINO}METHYL)PHENYL]THIOPHENE-2-CARBOXIMIDAMIDE (three-letter code: 5H3) (formula: $C_{20}H_{20}FN_3S$).



Mol	Chain	Residues	Atoms					ZeroOcc	AltConf
4	A	1	Total	C	F	N	S	0	0
			25	20	1	3	1		
4	B	1	Total	C	F	N	S	0	0
			25	20	1	3	1		

- Molecule 5 is ACETATE ION (three-letter code: ACT) (formula: $C_2H_3O_2$).



Mol	Chain	Residues	Atoms			ZeroOcc	AltConf
5	A	1	Total	C	O	0	0
			4	2	2		
5	A	1	Total	C	O	0	0
			4	2	2		

Continued on next page...

Continued from previous page...

Mol	Chain	Residues	Atoms			ZeroOcc	AltConf
5	B	1	Total	C	O	0	0
			4	2	2		
5	B	1	Total	C	O	0	0
			4	2	2		

- Molecule 6 is GLYCEROL (three-letter code: GOL) (formula: $C_3H_8O_3$).



Mol	Chain	Residues	Atoms			ZeroOcc	AltConf
6	A	1	Total	C	O	0	0
			6	3	3		
6	B	1	Total	C	O	0	0
			6	3	3		

- Molecule 7 is ZINC ION (three-letter code: ZN) (formula: Zn).

Mol	Chain	Residues	Atoms		ZeroOcc	AltConf
7	A	1	Total	Zn	0	0
			1	1		

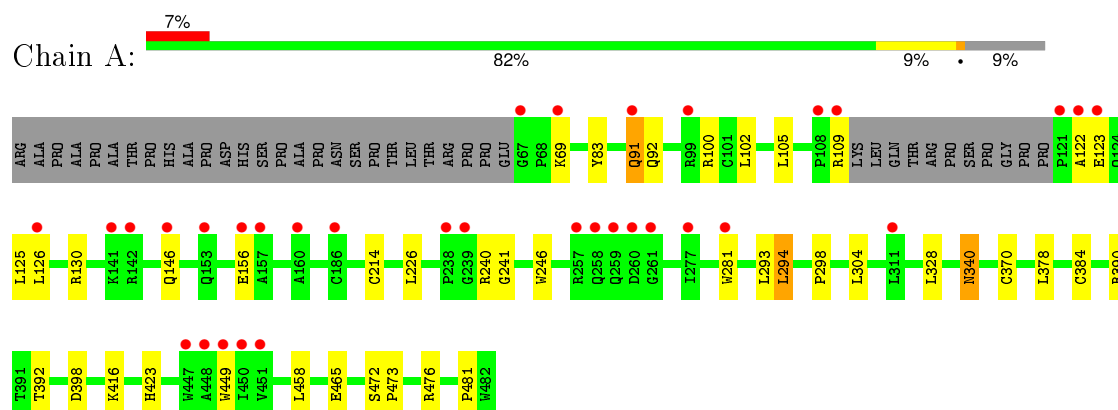
- Molecule 8 is water.

Mol	Chain	Residues	Atoms		ZeroOcc	AltConf
8	A	167	Total	O	0	0
			167	167		
8	B	187	Total	O	0	0
			187	187		

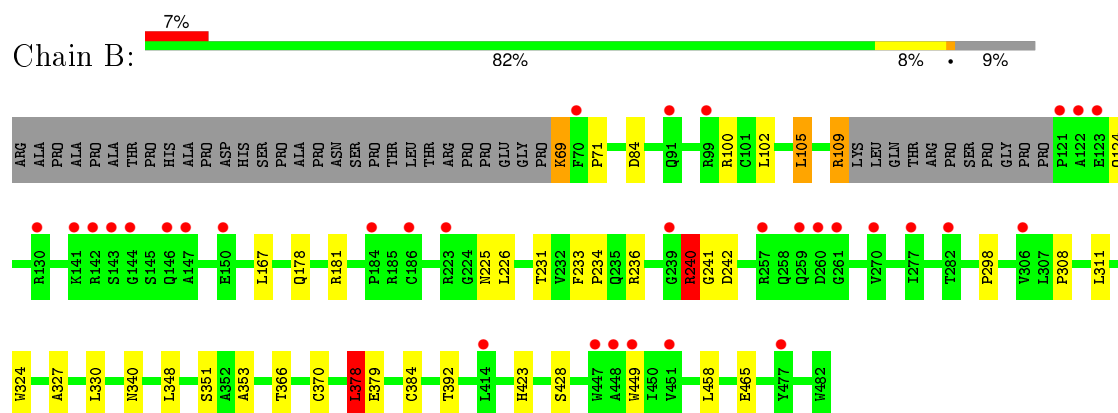
3 Residue-property plots [i](#)

These plots are drawn for all protein, RNA and DNA chains in the entry. The first graphic for a chain summarises the proportions of errors displayed in the second graphic. The second graphic shows the sequence view annotated by issues in geometry and electron density. Residues are color-coded according to the number of geometric quality criteria for which they contain at least one outlier: green = 0, yellow = 1, orange = 2 and red = 3 or more. A red dot above a residue indicates a poor fit to the electron density ($RSRZ > 2$). Stretches of 2 or more consecutive residues without any outlier are shown as a green connector. Residues present in the sample, but not in the model, are shown in grey.

- Molecule 1: Nitric oxide synthase, endothelial



- Molecule 1: Nitric oxide synthase, endothelial



4 Data and refinement statistics

Property	Value	Source
Space group	P 21 21 21	Depositor
Cell constants a, b, c, α , β , γ	57.64Å 106.23Å 156.49Å 90.00° 90.00° 90.00°	Depositor
Resolution (Å)	46.45 – 2.09 46.41 – 2.09	Depositor EDS
% Data completeness (in resolution range)	99.7 (46.45-2.09) 99.5 (46.41-2.09)	Depositor EDS
R_{merge}	0.58	Depositor
R_{sym}	0.58	Depositor
$\langle I/\sigma(I) \rangle$ ¹	2.10 (at 2.08Å)	Xtriage
Refinement program	REFMAC 5.7.0029	Depositor
R, R_{free}	0.164 , 0.205 0.164 , 0.205	Depositor DCC
R_{free} test set	2883 reflections (5.27%)	DCC
Wilson B-factor (Å ²)	35.9	Xtriage
Anisotropy	0.343	Xtriage
Bulk solvent k_{sol} (e/Å ³), B_{sol} (Å ²)	0.38 , 45.2	EDS
Estimated twinning fraction	No twinning to report.	Xtriage
L-test for twinning ²	$\langle L \rangle = 0.49$, $\langle L^2 \rangle = 0.33$	Xtriage
Outliers	0 of 57675 reflections	Xtriage
F_o, F_c correlation	0.97	EDS
Total number of atoms	6996	wwPDB-VP
Average B, all atoms (Å ²)	42.0	wwPDB-VP

Xtriage's analysis on translational NCS is as follows: *The largest off-origin peak in the Patterson function is 3.47% of the height of the origin peak. No significant pseudotranslation is detected.*

¹Intensities estimated from amplitudes.

²Theoretical values of $\langle |L| \rangle$, $\langle L^2 \rangle$ for acentric reflections are 0.5, 0.375 respectively for untwinned datasets, and 0.333, 0.2 for perfectly twinned datasets.

5 Model quality [i](#)

5.1 Standard geometry [i](#)

Bond lengths and bond angles in the following residue types are not validated in this section: GOL, ZN, H4B, CAS, 5H3, ACT, HEM

The Z score for a bond length (or angle) is the number of standard deviations the observed value is removed from the expected value. A bond length (or angle) with $|Z| > 5$ is considered an outlier worth inspection. RMSZ is the root-mean-square of all Z scores of the bond lengths (or angles).

Mol	Chain	Bond lengths		Bond angles	
		RMSZ	$\# Z > 5$	RMSZ	$\# Z > 5$
1	A	0.56	0/3314	0.68	0/4511
1	B	0.54	0/3291	0.67	3/4480 (0.1%)
All	All	0.55	0/6605	0.67	3/8991 (0.0%)

There are no bond length outliers.

All (3) bond angle outliers are listed below:

Mol	Chain	Res	Type	Atoms	Z	Observed(°)	Ideal(°)
1	B	240	ARG	NE-CZ-NH1	8.39	124.49	120.30
1	B	240	ARG	NE-CZ-NH2	-7.82	116.39	120.30
1	B	378	LEU	CA-CB-CG	5.19	127.24	115.30

There are no chirality outliers.

There are no planarity outliers.

5.2 Too-close contacts [i](#)

In the following table, the Non-H and H(model) columns list the number of non-hydrogen atoms and hydrogen atoms in the chain respectively. The H(added) column lists the number of hydrogen atoms added and optimized by MolProbity. The Clashes column lists the number of clashes within the asymmetric unit, whereas Symm-Clashes lists symmetry related clashes.

Mol	Chain	Non-H	H(model)	H(added)	Clashes	Symm-Clashes
1	A	3231	0	3140	26	0
1	B	3212	0	3117	27	1
2	A	43	0	30	2	0
2	B	43	0	30	1	0
3	A	17	0	15	1	0
3	B	17	0	15	1	0

Continued on next page...

Continued from previous page...

Mol	Chain	Non-H	H(model)	H(added)	Clashes	Symm-Clashes
4	A	25	0	19	0	0
4	B	25	0	19	1	0
5	A	8	0	6	0	0
5	B	8	0	6	0	0
6	A	6	0	8	0	0
6	B	6	0	8	0	0
7	A	1	0	0	0	0
8	A	167	0	0	4	1
8	B	187	0	0	2	0
All	All	6996	0	6413	52	1

The all-atom clashscore is defined as the number of clashes found per 1000 atoms (including hydrogen atoms). The all-atom clashscore for this structure is 4.

All (52) close contacts within the same asymmetric unit are listed below, sorted by their clash magnitude.

Atom-1	Atom-2	Interatomic distance (Å)	Clash overlap (Å)
1:A:384:CAS:AS	1:A:384:CAS:SG	2.49	1.31
1:B:384:CAS:AS	1:B:384:CAS:SG	2.57	1.22
1:A:240:ARG:HD3	1:A:298:PRO:HB3	1.65	0.79
1:A:126:LEU:HD11	1:A:156:GLU:HA	1.75	0.69
1:B:236:ARG:HD2	1:B:242:ASP:OD1	1.96	0.66
1:A:240:ARG:HD3	1:A:298:PRO:CB	2.26	0.64
8:A:631:HOH:O	1:B:109:ARG:HG2	2.01	0.60
1:B:308:PRO:HD2	1:B:311:LEU:HD12	1.84	0.59
1:A:240:ARG:N	8:A:748:HOH:O	2.35	0.58
1:B:240:ARG:HD2	1:B:241:GLY:O	2.04	0.58
1:A:281:TRP:HB2	1:A:304:LEU:HD21	1.87	0.56
1:A:126:LEU:HD23	1:A:130:ARG:NH2	2.21	0.56
1:A:240:ARG:HD2	1:A:241:GLY:O	2.06	0.56
1:A:370:CYS:SG	1:A:378:LEU:HD13	2.47	0.54
1:A:214:CYS:SG	8:A:760:HOH:O	2.59	0.53
1:A:384:CAS:CB	1:A:384:CAS:AS	3.16	0.53
1:B:384:CAS:AS	1:B:384:CAS:CB	3.16	0.53
1:B:378:LEU:HB2	8:B:612:HOH:O	2.10	0.52
2:A:501:HEM:HBB2	2:A:501:HEM:HHC	1.91	0.52
1:B:384:CAS:SG	1:B:384:CAS:CE1	2.97	0.52
1:B:236:ARG:HD3	1:B:351:SER:HB3	1.92	0.51
1:A:91:GLN:HE21	1:A:91:GLN:HA	1.75	0.50
1:B:370:CYS:SG	1:B:378:LEU:HD13	2.52	0.49
1:A:392:THR:HB	1:B:423:HIS:HB2	1.94	0.49

Continued on next page...

Continued from previous page...

Atom-1	Atom-2	Interatomic distance (Å)	Clash overlap (Å)
1:A:340:ASN:HD22	1:A:340:ASN:H	1.61	0.49
1:A:423:HIS:HB2	1:B:392:THR:HB	1.95	0.49
1:A:449:TRP:HA	3:A:502:H4B:N1	2.28	0.48
1:B:428:SER:OG	8:B:760:HOH:O	2.19	0.48
1:B:233:PHE:HB3	1:B:234:PRO:CD	2.44	0.48
2:A:501:HEM:HHC	2:A:501:HEM:CBB	2.45	0.47
1:A:83:TYR:HE2	1:B:109:ARG:HH21	1.63	0.46
1:B:240:ARG:HD3	1:B:298:PRO:HB3	1.98	0.46
1:A:246:TRP:HB2	1:A:294:LEU:HB3	1.97	0.46
1:A:390:ARG:HB2	1:A:390:ARG:HE	1.58	0.45
1:B:69:LYS:NZ	1:B:69:LYS:HA	2.32	0.45
1:A:378:LEU:HB2	8:A:628:HOH:O	2.16	0.44
1:B:366:THR:O	1:B:370:CYS:HB2	2.17	0.44
1:A:246:TRP:CD1	1:A:481:PRO:HG2	2.52	0.44
1:B:167:LEU:HG	1:B:348:LEU:HD12	2.00	0.44
1:B:324:TRP:O	1:B:327:ALA:HB3	2.18	0.43
1:B:231:THR:O	1:B:353:ALA:HA	2.19	0.43
2:B:501:HEM:HBB2	2:B:501:HEM:HHC	2.01	0.43
1:B:449:TRP:HA	3:B:502:H4B:N1	2.33	0.42
1:A:472:SER:HA	1:A:473:PRO:C	2.39	0.42
1:B:71:PRO:HG2	1:B:84:ASP:HB3	2.00	0.42
4:B:503:5H3:C05	4:B:503:5H3:C12	2.98	0.42
1:B:178:GLN:HE22	1:B:181:ARG:HH11	1.68	0.41
1:A:92:GLN:OE1	1:A:476:ARG:NH1	2.54	0.41
1:A:240:ARG:CD	1:A:298:PRO:HB3	2.43	0.41
1:A:465:GLU:HB3	1:B:105:LEU:HD22	2.02	0.41
1:B:384:CAS:AS	1:B:384:CAS:HB2	2.82	0.40
1:A:105:LEU:HD22	1:B:465:GLU:HB3	2.02	0.40

All (1) symmetry-related close contacts are listed below. The label for Atom-2 includes the symmetry operator and encoded unit-cell translations to be applied.

Atom-1	Atom-2	Interatomic distance (Å)	Clash overlap (Å)
1:B:240:ARG:NH2	8:A:743:HOH:O[2_555]	2.17	0.03

5.3 Torsion angles [i](#)

5.3.1 Protein backbone [i](#)

In the following table, the Percentiles column shows the percent Ramachandran outliers of the chain as a percentile score with respect to all X-ray entries followed by that with respect to entries of similar resolution.

The Analysed column shows the number of residues for which the backbone conformation was analysed, and the total number of residues.

Mol	Chain	Analysed	Favoured	Allowed	Outliers	Percentiles	
1	A	401/443 (90%)	387 (96%)	13 (3%)	1 (0%)	52	53
1	B	398/443 (90%)	385 (97%)	13 (3%)	0	100	100
All	All	799/886 (90%)	772 (97%)	26 (3%)	1 (0%)	56	58

All (1) Ramachandran outliers are listed below:

Mol	Chain	Res	Type
1	A	122	ALA

5.3.2 Protein sidechains [i](#)

In the following table, the Percentiles column shows the percent sidechain outliers of the chain as a percentile score with respect to all X-ray entries followed by that with respect to entries of similar resolution.

The Analysed column shows the number of residues for which the sidechain conformation was analysed, and the total number of residues.

Mol	Chain	Analysed	Rotameric	Outliers	Percentiles	
1	A	344/375 (92%)	328 (95%)	16 (5%)	32	30
1	B	342/375 (91%)	328 (96%)	14 (4%)	37	36
All	All	686/750 (92%)	656 (96%)	30 (4%)	35	33

All (30) residues with a non-rotameric sidechain are listed below:

Mol	Chain	Res	Type
1	A	69	LYS
1	A	91	GLN
1	A	100	ARG
1	A	102	LEU
1	A	109	ARG

Continued on next page...

Continued from previous page...

Mol	Chain	Res	Type
1	A	123	GLU
1	A	125	LEU
1	A	146	GLN
1	A	226	LEU
1	A	293	LEU
1	A	294	LEU
1	A	328	LEU
1	A	340	ASN
1	A	398	ASP
1	A	416	LYS
1	A	458	LEU
1	B	69	LYS
1	B	100	ARG
1	B	102	LEU
1	B	105	LEU
1	B	109	ARG
1	B	124	GLN
1	B	225	ASN
1	B	226	LEU
1	B	240	ARG
1	B	330	LEU
1	B	340	ASN
1	B	378	LEU
1	B	379	GLU
1	B	458	LEU

Some sidechains can be flipped to improve hydrogen bonding and reduce clashes. All (14) such sidechains are listed below:

Mol	Chain	Res	Type
1	A	91	GLN
1	A	146	GLN
1	A	166	HIS
1	A	191	GLN
1	A	340	ASN
1	A	376	ASN
1	A	413	GLN
1	A	468	ASN
1	B	178	GLN
1	B	222	ASN
1	B	225	ASN
1	B	340	ASN
1	B	376	ASN

Continued on next page...

Continued from previous page...

Mol	Chain	Res	Type
1	B	405	ASN

5.3.3 RNA ⓘ

There are no RNA molecules in this entry.

5.4 Non-standard residues in protein, DNA, RNA chains ⓘ

2 non-standard protein/DNA/RNA residues are modelled in this entry.

In the following table, the Counts columns list the number of bonds (or angles) for which Mogul statistics could be retrieved, the number of bonds (or angles) that are observed in the model and the number of bonds (or angles) that are defined in the chemical component dictionary. The Link column lists molecule types, if any, to which the group is linked. The Z score for a bond length (or angle) is the number of standard deviations the observed value is removed from the expected value. A bond length (or angle) with $|Z| > 2$ is considered an outlier worth inspection. RMSZ is the root-mean-square of all Z scores of the bond lengths (or angles).

Mol	Type	Chain	Res	Link	Bond lengths			Bond angles		
					Counts	RMSZ	$\# Z > 2$	Counts	RMSZ	$\# Z > 2$
1	CAS	A	384	1	5,8,9	1.09	1 (20%)	2,9,11	1.22	0
1	CAS	B	384	1	5,8,9	1.27	0	2,9,11	1.64	1 (50%)

In the following table, the Chirals column lists the number of chiral outliers, the number of chiral centers analysed, the number of these observed in the model and the number defined in the chemical component dictionary. Similar counts are reported in the Torsion and Rings columns. '-' means no outliers of that kind were identified.

Mol	Type	Chain	Res	Link	Chirals	Torsions	Rings
1	CAS	A	384	1	-	0/0/7/9	0/0/0/0
1	CAS	B	384	1	-	0/0/7/9	0/0/0/0

All (1) bond length outliers are listed below:

Mol	Chain	Res	Type	Atoms	Z	Observed(Å)	Ideal(Å)
1	A	384	CAS	AS-CE2	2.10	2.01	1.96

All (1) bond angle outliers are listed below:

Mol	Chain	Res	Type	Atoms	Z	Observed(°)	Ideal(°)
1	B	384	CAS	O-C-CA	-2.25	119.62	125.49

There are no chirality outliers.

There are no torsion outliers.

There are no ring outliers.

2 monomers are involved in 6 short contacts:

Mol	Chain	Res	Type	Clashes	Symm-Clashes
1	A	384	CAS	2	0
1	B	384	CAS	4	0

5.5 Carbohydrates [i](#)

There are no carbohydrates in this entry.

5.6 Ligand geometry [i](#)

Of 13 ligands modelled in this entry, 1 is monoatomic - leaving 12 for Mogul analysis.

In the following table, the Counts columns list the number of bonds (or angles) for which Mogul statistics could be retrieved, the number of bonds (or angles) that are observed in the model and the number of bonds (or angles) that are defined in the chemical component dictionary. The Link column lists molecule types, if any, to which the group is linked. The Z score for a bond length (or angle) is the number of standard deviations the observed value is removed from the expected value. A bond length (or angle) with $|Z| > 2$ is considered an outlier worth inspection. RMSZ is the root-mean-square of all Z scores of the bond lengths (or angles).

Mol	Type	Chain	Res	Link	Bond lengths			Bond angles		
					Counts	RMSZ	# $ Z > 2$	Counts	RMSZ	# $ Z > 2$
2	HEM	A	501	1	30,50,50	1.99	7 (23%)	24,82,82	2.34	9 (37%)
3	H4B	A	502	-	13,18,18	0.79	0	11,26,26	2.57	5 (45%)
4	5H3	A	503	-	26,27,27	1.18	2 (7%)	27,35,35	1.57	2 (7%)
5	ACT	A	504	-	1,3,3	1.14	0	0,3,3	0.00	-
5	ACT	A	505	-	1,3,3	1.63	0	0,3,3	0.00	-
6	GOL	A	506	-	5,5,5	0.30	0	5,5,5	0.56	0
2	HEM	B	501	1	30,50,50	2.06	6 (20%)	24,82,82	2.53	10 (41%)
3	H4B	B	502	-	13,18,18	0.81	0	11,26,26	2.27	5 (45%)
4	5H3	B	503	-	26,27,27	1.15	4 (15%)	27,35,35	1.32	1 (3%)
5	ACT	B	504	-	1,3,3	0.79	0	0,3,3	0.00	-
5	ACT	B	505	-	1,3,3	1.79	0	0,3,3	0.00	-
6	GOL	B	506	-	5,5,5	0.31	0	5,5,5	0.61	0

In the following table, the Chirals column lists the number of chiral outliers, the number of chiral centers analysed, the number of these observed in the model and the number defined in the chemical

component dictionary. Similar counts are reported in the Torsion and Rings columns. '-' means no outliers of that kind were identified.

Mol	Type	Chain	Res	Link	Chirals	Torsions	Rings
2	HEM	A	501	1	-	0/10/54/54	0/0/8/8
3	H4B	A	502	-	-	0/8/17/17	0/2/2/2
4	5H3	A	503	-	-	0/11/15/15	0/3/3/3
5	ACT	A	504	-	-	0/0/0/0	0/0/0/0
5	ACT	A	505	-	-	0/0/0/0	0/0/0/0
6	GOL	A	506	-	-	0/4/4/4	0/0/0/0
2	HEM	B	501	1	-	0/10/54/54	0/0/8/8
3	H4B	B	502	-	-	0/8/17/17	0/2/2/2
4	5H3	B	503	-	-	0/11/15/15	0/3/3/3
5	ACT	B	504	-	-	0/0/0/0	0/0/0/0
5	ACT	B	505	-	-	0/0/0/0	0/0/0/0
6	GOL	B	506	-	-	0/4/4/4	0/0/0/0

All (19) bond length outliers are listed below:

Mol	Chain	Res	Type	Atoms	Z	Observed(Å)	Ideal(Å)
2	B	501	HEM	C2D-C3D	-6.59	1.34	1.54
2	A	501	HEM	C2D-C3D	-6.17	1.36	1.54
2	B	501	HEM	C2C-C1C	-5.41	1.42	1.52
2	A	501	HEM	C2C-C1C	-5.02	1.43	1.52
2	A	501	HEM	C3B-C4B	-3.39	1.48	1.51
2	B	501	HEM	C3D-C4D	-3.01	1.47	1.51
4	A	503	5H3	C06-N07	-2.68	1.33	1.39
2	B	501	HEM	C3B-C4B	-2.62	1.49	1.51
2	B	501	HEM	C2B-C1B	-2.59	1.43	1.51
2	A	501	HEM	C3D-C4D	-2.30	1.48	1.51
2	A	501	HEM	C2B-C1B	-2.26	1.44	1.51
4	B	503	5H3	C11-N07	-2.26	1.37	1.41
4	B	503	5H3	C06-N07	-2.17	1.34	1.39
4	B	503	5H3	C24-C23	2.06	1.41	1.37
4	B	503	5H3	C05-C06	2.10	1.48	1.45
2	A	501	HEM	FE-NB	2.16	2.08	1.97
2	A	501	HEM	FE-NC	3.02	2.07	1.95
4	A	503	5H3	C05-C06	3.42	1.50	1.45
2	B	501	HEM	FE-NC	3.55	2.09	1.95

All (32) bond angle outliers are listed below:

Mol	Chain	Res	Type	Atoms	Z	Observed(°)	Ideal(°)
4	A	503	5H3	C03-C02-S01	-6.00	106.58	113.23

Continued on next page...

Continued from previous page...

Mol	Chain	Res	Type	Atoms	Z	Observed(°)	Ideal(°)
4	B	503	5H3	C03-C02-S01	-4.55	108.20	113.23
2	B	501	HEM	CBA-CAA-C2A	-4.42	104.61	112.53
3	A	502	H4B	N3-C2-N1	-3.80	119.31	125.53
2	B	501	HEM	C1D-CHD-C4C	-3.44	120.06	125.82
3	B	502	H4B	N3-C2-N1	-3.36	120.02	125.53
2	B	501	HEM	C3C-CAC-CBC	-3.32	119.36	124.46
2	A	501	HEM	C1D-CHD-C4C	-3.04	120.74	125.82
2	A	501	HEM	C3B-CAB-CBB	-2.74	120.26	124.46
2	B	501	HEM	C3B-C4B-NB	-2.22	107.38	111.63
2	A	501	HEM	C3B-C4B-NB	-2.20	107.43	111.63
4	A	503	5H3	C12-C11-C16	-2.14	117.12	119.69
3	B	502	H4B	N2-C2-N3	2.06	120.61	117.20
2	B	501	HEM	C2D-C3D-C4D	2.36	105.50	101.50
2	A	501	HEM	C2D-C3D-C4D	2.39	105.55	101.50
3	B	502	H4B	C2-N1-C8A	2.78	120.80	114.54
2	B	501	HEM	CMD-C2D-C3D	2.80	126.72	114.35
3	A	502	H4B	N2-C2-N3	2.85	121.91	117.20
3	A	502	H4B	C2-N1-C8A	2.87	120.99	114.54
2	A	501	HEM	CMD-C2D-C3D	2.98	127.52	114.35
3	B	502	H4B	C4-N3-C2	3.34	120.58	115.94
2	B	501	HEM	CMB-C2B-C3B	3.83	126.09	116.53
3	B	502	H4B	C4-C4A-C8A	3.89	118.09	114.56
2	A	501	HEM	CMB-C2B-C3B	3.99	126.49	116.53
3	A	502	H4B	C4-N3-C2	4.11	121.64	115.94
2	B	501	HEM	CMC-C2C-C3C	4.23	127.09	116.53
2	A	501	HEM	CMC-C2C-C3C	4.27	127.20	116.53
2	A	501	HEM	CAD-C3D-C4D	4.41	128.02	112.47
2	B	501	HEM	CAD-C3D-C2D	4.47	126.06	113.22
2	B	501	HEM	CAD-C3D-C4D	4.52	128.43	112.47
3	A	502	H4B	C4-C4A-C8A	4.57	118.70	114.56
2	A	501	HEM	CAD-C3D-C2D	4.57	126.36	113.22

There are no chirality outliers.

There are no torsion outliers.

There are no ring outliers.

5 monomers are involved in 6 short contacts:

Mol	Chain	Res	Type	Clashes	Symm-Clashes
2	A	501	HEM	2	0
3	A	502	H4B	1	0
2	B	501	HEM	1	0

Continued on next page...

Continued from previous page...

Mol	Chain	Res	Type	Clashes	Symm-Clashes
3	B	502	H4B	1	0
4	B	503	5H3	1	0

5.7 Other polymers [i](#)

There are no such residues in this entry.

5.8 Polymer linkage issues [i](#)

There are no chain breaks in this entry.

6 Fit of model and data ⓘ

6.1 Protein, DNA and RNA chains ⓘ

In the following table, the column labelled ‘#RSRZ> 2’ contains the number (and percentage) of RSRZ outliers, followed by percent RSRZ outliers for the chain as percentile scores relative to all X-ray entries and entries of similar resolution. The OWAB column contains the minimum, median, 95th percentile and maximum values of the occupancy-weighted average B-factor per residue. The column labelled ‘Q< 0.9’ lists the number of (and percentage) of residues with an average occupancy less than 0.9.

Mol	Chain	Analysed	<RSRZ>	#RSRZ>2	OWAB(Å ²)	Q<0.9
1	A	404/443 (91%)	0.39	33 (8%) 14 20	26, 37, 67, 92	0
1	B	402/443 (90%)	0.39	32 (7%) 15 21	28, 40, 70, 105	0
All	All	806/886 (90%)	0.39	65 (8%) 15 20	26, 38, 68, 105	0

All (65) RSRZ outliers are listed below:

Mol	Chain	Res	Type	RSRZ
1	B	259	GLN	7.7
1	B	146	GLN	5.6
1	B	261	GLY	5.4
1	B	142	ARG	4.5
1	A	123	GLU	4.4
1	A	69	LYS	4.3
1	A	122	ALA	4.1
1	B	448	ALA	3.7
1	B	141	LYS	3.7
1	A	67	GLY	3.6
1	A	450	ILE	3.6
1	A	239	GLY	3.6
1	B	144	GLY	3.6
1	A	146	GLN	3.6
1	B	260	ASP	3.6
1	A	160	ALA	3.5
1	A	259	GLN	3.5
1	B	123	GLU	3.3
1	B	143	SER	3.3
1	B	91	GLN	3.3
1	B	122	ALA	3.2
1	A	448	ALA	3.2
1	B	223	ARG	3.2
1	A	261	GLY	3.1

Continued on next page...

Continued from previous page...

Mol	Chain	Res	Type	RSRZ
1	A	108	PRO	3.1
1	A	141	LYS	3.1
1	B	147	ALA	3.1
1	A	109	ARG	3.0
1	B	239	GLY	3.0
1	A	153	GLN	2.9
1	A	257	ARG	2.8
1	A	142	ARG	2.8
1	A	91	GLN	2.8
1	B	449	TRP	2.7
1	B	70	PHE	2.7
1	B	277	ILE	2.7
1	A	447	TRP	2.7
1	A	157	ALA	2.7
1	B	130	ARG	2.6
1	A	449	TRP	2.5
1	B	282	THR	2.5
1	B	447	TRP	2.5
1	B	270	VAL	2.5
1	A	311	LEU	2.5
1	A	99	ARG	2.4
1	B	257	ARG	2.4
1	A	126	LEU	2.3
1	A	156	GLU	2.3
1	A	260	ASP	2.3
1	A	258	GLN	2.2
1	B	150	GLU	2.2
1	A	238	PRO	2.2
1	B	184	PRO	2.2
1	B	414	LEU	2.2
1	A	277	ILE	2.2
1	B	121	PRO	2.2
1	B	477	TYR	2.2
1	A	281	TRP	2.1
1	A	451	VAL	2.1
1	B	306	VAL	2.1
1	A	186	CYS	2.1
1	A	121	PRO	2.0
1	B	451	VAL	2.0
1	B	99	ARG	2.0
1	B	186	CYS	2.0

6.2 Non-standard residues in protein, DNA, RNA chains ⓘ

In the following table, the Atoms column lists the number of modelled atoms in the group and the number defined in the chemical component dictionary. LLDF column lists the quality of electron density of the group with respect to its neighbouring residues in protein, DNA or RNA chains. The B-factors column lists the minimum, median, 95th percentile and maximum values of B factors of atoms in the group. The column labelled 'Q< 0.9' lists the number of atoms with occupancy less than 0.9.

Mol	Type	Chain	Res	Atoms	RSCC	RSR	LLDF	B-factors(Å ²)	Q<0.9
1	CAS	A	384	9/10	0.97	0.11	-	37,38,61,65	0
1	CAS	B	384	9/10	0.96	0.10	-	46,48,69,69	0

6.3 Carbohydrates ⓘ

There are no carbohydrates in this entry.

6.4 Ligands ⓘ

In the following table, the Atoms column lists the number of modelled atoms in the group and the number defined in the chemical component dictionary. LLDF column lists the quality of electron density of the group with respect to its neighbouring residues in protein, DNA or RNA chains. The B-factors column lists the minimum, median, 95th percentile and maximum values of B factors of atoms in the group. The column labelled 'Q< 0.9' lists the number of atoms with occupancy less than 0.9.

Mol	Type	Chain	Res	Atoms	RSCC	RSR	LLDF	B-factors(Å ²)	Q<0.9
6	GOL	A	506	6/6	0.92	0.26	2.80	57,59,63,64	0
5	ACT	B	504	4/4	0.98	0.17	2.07	41,44,44,48	0
6	GOL	B	506	6/6	0.96	0.23	1.63	44,50,55,55	0
4	5H3	B	503	25/25	0.96	0.18	1.01	24,30,56,65	0
2	HEM	A	501	43/43	0.98	0.18	0.83	26,29,34,38	0
3	H4B	B	502	17/17	0.97	0.22	0.79	30,33,39,39	0
3	H4B	A	502	17/17	0.98	0.20	0.51	26,33,36,36	0
4	5H3	A	503	25/25	0.96	0.16	0.41	24,29,59,69	0
2	HEM	B	501	43/43	0.98	0.17	0.39	27,30,36,41	0
5	ACT	A	505	4/4	0.98	0.11	0.18	32,32,33,35	0
5	ACT	A	504	4/4	0.98	0.10	-1.03	40,43,44,47	0
5	ACT	B	505	4/4	0.98	0.07	-1.82	34,34,35,35	0
7	ZN	A	507	1/1	1.00	0.06	-2.31	40,40,40,40	0

6.5 Other polymers [i](#)

There are no such residues in this entry.