



Full wwPDB X-ray Structure Validation Report ⓘ

Jan 31, 2016 – 08:27 PM GMT

PDB ID : 1KDR
Title : CYTIDINE MONOPHOSPHATE KINASE FROM E.COLI IN COMPLEX WITH ARA-CYTIDINE MONOPHOSPHATE
Authors : Bertrand, T.; Briozzo, P.; Assairi, L.; Ofiteru, A.; Bucurenci, N.; Munier-Lehmann, H.; Golinelli-Pimpaneau, B.; Barzu, O.; Gilles, A.M.
Deposited on : 2001-11-13
Resolution : 2.25 Å(reported)

This is a Full wwPDB X-ray Structure Validation Report for a publicly released PDB entry.
We welcome your comments at validation@mail.wwpdb.org
A user guide is available at
<http://wwpdb.org/validation/2016/XrayValidationReportHelp>
with specific help available everywhere you see the ⓘ symbol.

The following versions of software and data (see [references ⓘ](#)) were used in the production of this report:

MolProbity : 4.02b-467
Mogul : 1.7 (RC4), CSD as536be (2015)
Xtriage (Phenix) : **NOT EXECUTED**
EDS : **NOT EXECUTED**
Percentile statistics : 20151230.v01 (using entries in the PDB archive December 30th 2015)
Ideal geometry (proteins) : Engh & Huber (2001)
Ideal geometry (DNA, RNA) : Parkinson et al. (1996)
Validation Pipeline (wwPDB-VP) : trunk26865

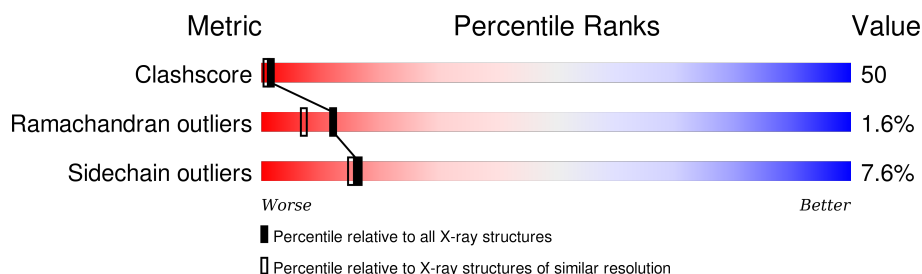
1 Overall quality at a glance

The following experimental techniques were used to determine the structure:

X-RAY DIFFRACTION

The reported resolution of this entry is 2.25 Å.

Percentile scores (ranging between 0-100) for global validation metrics of the entry are shown in the following graphic. The table shows the number of entries on which the scores are based.



Metric	Whole archive (#Entries)	Similar resolution (#Entries, resolution range(Å))
Clashscore	102246	1095 (2.26-2.26)
Ramachandran outliers	100387	1063 (2.26-2.26)
Sidechain outliers	100360	1063 (2.26-2.26)

The table below summarises the geometric issues observed across the polymeric chains and their fit to the electron density. The red, orange, yellow and green segments on the lower bar indicate the fraction of residues that contain outliers for ≥ 3 , 2, 1 and 0 types of geometric quality criteria. A grey segment represents the fraction of residues that are not modelled. The numeric value for each fraction is indicated below the corresponding segment, with a dot representing fractions $\leq 5\%$. The upper red bar (where present) indicates the fraction of residues that have poor fit to the electron density. The numeric value is given above the bar.

Note EDS was not executed.

Mol	Chain	Length	Quality of chain
1	A	227	 37% 54% 6% •
1	B	227	 42% 44% 8% • •

2 Entry composition [i](#)

There are 4 unique types of molecules in this entry. The entry contains 3535 atoms, of which 0 are hydrogens and 0 are deuteriums.

In the tables below, the ZeroOcc column contains the number of atoms modelled with zero occupancy, the AltConf column contains the number of residues with at least one atom in alternate conformation and the Trace column contains the number of residues modelled with at most 2 atoms.

- Molecule 1 is a protein called CYTIDYLATE KINASE.

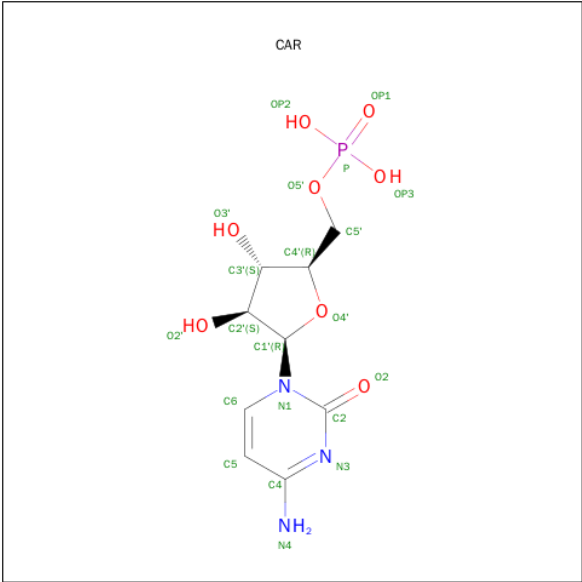
Mol	Chain	Residues	Atoms					ZeroOcc	AltConf	Trace
1	A	221	Total	C	N	O	S	0	0	0
			1699	1063	312	320	4			
1	B	221	Total	C	N	O	S	0	0	0
			1699	1063	312	320	4			

- Molecule 2 is SULFATE ION (three-letter code: SO₄) (formula: O₄S).



Mol	Chain	Residues	Atoms			ZeroOcc	AltConf
2	A	1	Total	O	S	0	0
			5	4	1		
2	B	1	Total	O	S	0	0
			5	4	1		
2	B	1	Total	O	S	0	0
			5	4	1		

- Molecule 3 is CYTOSINE ARABINOSE-5'-PHOSPHATE (three-letter code: CAR) (formula: C₉H₁₄N₃O₈P).



Mol	Chain	Residues	Atoms					ZeroOcc	AltConf
3	A	1	Total	C	N	O	P	0	0
			21	9	3	8	1		
3	B	1	Total	C	N	O	P	0	0
			21	9	3	8	1		

- Molecule 4 is water.

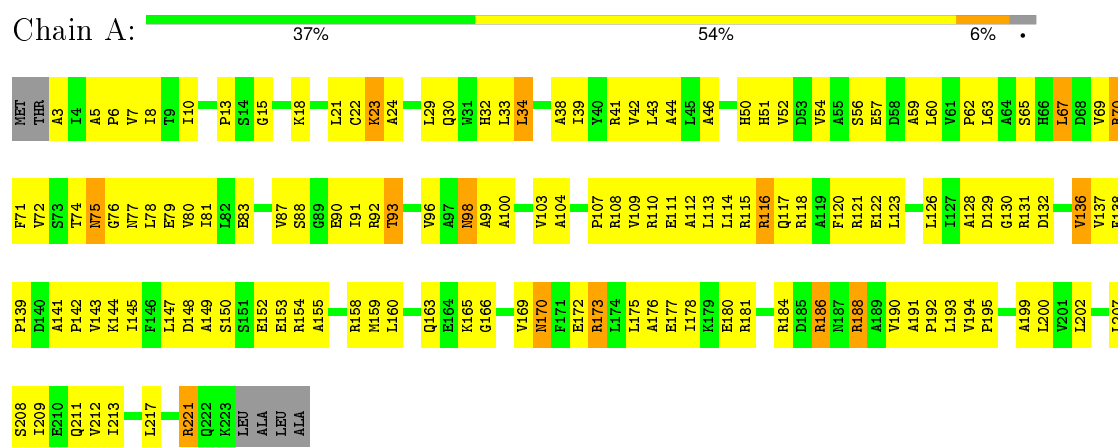
Mol	Chain	Residues	Atoms		ZeroOcc	AltConf
4	A	36	Total	O	0	0
			36	36		
4	B	44	Total	O	0	0
			44	44		

3 Residue-property plots

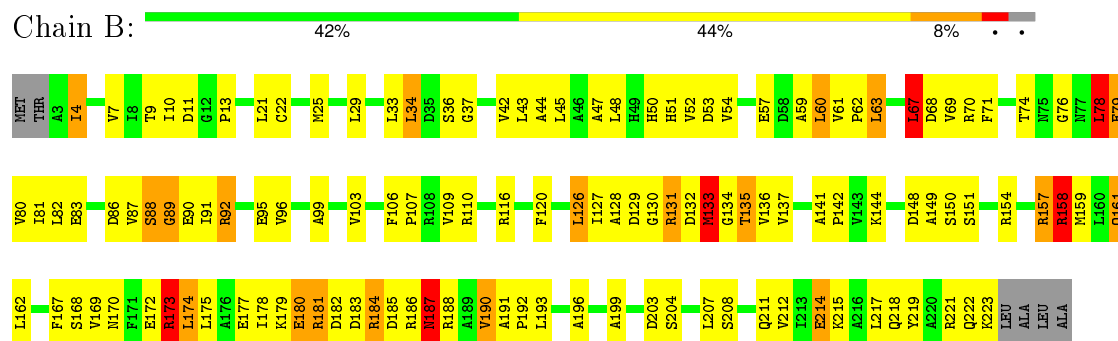
These plots are drawn for all protein, RNA and DNA chains in the entry. The first graphic for a chain summarises the proportions of errors displayed in the second graphic. The second graphic shows the sequence view annotated by issues in geometry and electron density. Residues are color-coded according to the number of geometric quality criteria for which they contain at least one outlier: green = 0, yellow = 1, orange = 2 and red = 3 or more. A red dot above a residue indicates a poor fit to the electron density ($RSRZ > 2$). Stretches of 2 or more consecutive residues without any outlier are shown as a green connector. Residues present in the sample, but not in the model, are shown in grey.

Note EDS was not executed.

• Molecule 1: CYTIDYLATE KINASE



• Molecule 1: CYTIDYLATE KINASE



4 Data and refinement statistics

Xtriage (Phenix) and EDS were not executed - this section will therefore be incomplete.

Property	Value	Source
Space group	P 21 21 21	Depositor
Cell constants a, b, c, α , β , γ	73.58 Å 73.77 Å 77.64 Å 90.00° 90.00° 90.00°	Depositor
Resolution (Å)	15.00 – 2.25	Depositor
% Data completeness (in resolution range)	81.9 (15.00-2.25)	Depositor
R_{merge}	(Not available)	Depositor
R_{sym}	8.30	Depositor
Refinement program	CNS 1.0	Depositor
R, R_{free}	0.199 , 0.254	Depositor
Estimated twinning fraction	No twinning to report.	Xtriage
Total number of atoms	3535	wwPDB-VP
Average B, all atoms (Å ²)	27.0	wwPDB-VP

5 Model quality

5.1 Standard geometry

Bond lengths and bond angles in the following residue types are not validated in this section: CAR, SO4

The Z score for a bond length (or angle) is the number of standard deviations the observed value is removed from the expected value. A bond length (or angle) with $|Z| > 5$ is considered an outlier worth inspection. RMSZ is the root-mean-square of all Z scores of the bond lengths (or angles).

Mol	Chain	Bond lengths		Bond angles	
		RMSZ	# Z > 5	RMSZ	# Z > 5
1	A	0.62	0/1724	1.01	7/2336 (0.3%)
1	B	0.66	0/1724	1.04	13/2336 (0.6%)
All	All	0.64	0/3448	1.03	20/4672 (0.4%)

Chiral center outliers are detected by calculating the chiral volume of a chiral center and verifying if the center is modelled as a planar moiety or with the opposite hand. A planarity outlier is detected by checking planarity of atoms in a peptide group, atoms in a mainchain group or atoms of a sidechain that are expected to be planar.

Mol	Chain	#Chirality outliers	#Planarity outliers
1	B	0	1

There are no bond length outliers.

All (20) bond angle outliers are listed below:

Mol	Chain	Res	Type	Atoms	Z	Observed(°)	Ideal(°)
1	B	173	ARG	NE-CZ-NH2	7.42	124.01	120.30
1	B	186	ARG	NE-CZ-NH2	7.34	123.97	120.30
1	B	131	ARG	NE-CZ-NH2	7.34	123.97	120.30
1	A	186	ARG	NE-CZ-NH2	7.32	123.96	120.30
1	B	221	ARG	NE-CZ-NH2	7.31	123.95	120.30
1	A	188	ARG	NE-CZ-NH2	7.28	123.94	120.30
1	A	221	ARG	NE-CZ-NH2	7.21	123.91	120.30
1	A	116	ARG	NE-CZ-NH2	6.80	123.70	120.30
1	B	181	ARG	NE-CZ-NH2	6.75	123.68	120.30
1	A	70	ARG	NE-CZ-NH2	6.74	123.67	120.30
1	B	158	ARG	NE-CZ-NH2	6.74	123.67	120.30
1	A	115	ARG	NE-CZ-NH2	6.62	123.61	120.30
1	B	92	ARG	NE-CZ-NH2	6.47	123.53	120.30
1	B	184	ARG	NE-CZ-NH2	6.38	123.49	120.30

Continued on next page...

Continued from previous page...

Mol	Chain	Res	Type	Atoms	Z	Observed(°)	Ideal(°)
1	B	133	MET	CG-SD-CE	6.17	110.07	100.20
1	B	157	ARG	NE-CZ-NH2	6.14	123.37	120.30
1	B	159	MET	CG-SD-CE	5.87	109.58	100.20
1	B	187	ASN	O-C-N	-5.75	113.50	122.70
1	A	136	VAL	CB-CA-C	-5.43	101.08	111.40
1	B	78	LEU	CB-CA-C	-5.03	100.64	110.20

There are no chirality outliers.

All (1) planarity outliers are listed below:

Mol	Chain	Res	Type	Group
1	B	187	ASN	Mainchain

5.2 Too-close contacts ⓘ

In the following table, the Non-H and H(model) columns list the number of non-hydrogen atoms and hydrogen atoms in the chain respectively. The H(added) column lists the number of hydrogen atoms added and optimized by MolProbity. The Clashes column lists the number of clashes within the asymmetric unit, whereas Symm-Clashes lists symmetry related clashes.

Mol	Chain	Non-H	H(model)	H(added)	Clashes	Symm-Clashes
1	A	1699	0	1721	174	1
1	B	1699	0	1721	174	1
2	A	5	0	0	0	0
2	B	10	0	0	0	0
3	A	21	0	12	3	0
3	B	21	0	12	4	0
4	A	36	0	0	1	0
4	B	44	0	0	4	0
All	All	3535	0	3466	348	1

The all-atom clashscore is defined as the number of clashes found per 1000 atoms (including hydrogen atoms). The all-atom clashscore for this structure is 50.

All (348) close contacts within the same asymmetric unit are listed below, sorted by their clash magnitude.

Atom-1	Atom-2	Interatomic distance (Å)	Clash overlap (Å)
1:A:74:THR:CG2	1:A:77:ASN:O	1.72	1.36
1:B:183:ASP:OD1	1:B:187:ASN:ND2	1.63	1.28

Continued on next page...

Continued from previous page...

Atom-1	Atom-2	Interatomic distance (Å)	Clash overlap (Å)
1:A:132:ASP:HB2	1:A:136:VAL:CG2	1.65	1.24
1:A:54:VAL:O	1:A:60:LEU:HD11	1.42	1.17
1:B:79:GLU:OE2	1:B:86:ASP:HB2	1.45	1.16
1:B:172:GLU:OE2	4:B:6418:HOH:O	1.63	1.16
1:B:87:VAL:O	1:B:89:GLY:N	1.81	1.13
1:A:74:THR:HG23	1:A:77:ASN:O	0.97	1.12
1:B:174:LEU:HD23	1:B:177:GLU:OE2	1.49	1.09
1:A:159:MET:O	1:A:163:GLN:HG3	1.54	1.07
1:A:132:ASP:HB2	1:A:136:VAL:HG23	1.32	1.05
1:B:173:ARG:HE	1:B:174:LEU:HG	1.11	1.04
1:A:70:ARG:HH21	1:A:81:ILE:HD13	1.23	1.02
1:A:74:THR:O	1:A:75:ASN:OD1	1.80	1.00
1:A:74:THR:O	1:A:75:ASN:CG	2.01	0.99
1:A:132:ASP:HB2	1:A:136:VAL:HG21	1.39	0.99
1:B:170:ASN:H	1:B:173:ARG:HH22	1.10	0.97
1:B:158:ARG:HH12	1:B:174:LEU:HD22	1.30	0.95
1:A:43:LEU:HA	1:A:67:LEU:HD11	1.48	0.94
1:A:149:ALA:HB3	1:A:154:ARG:CD	1.99	0.93
1:B:60:LEU:HD23	1:B:63:LEU:HD21	1.51	0.93
1:A:54:VAL:HA	1:A:60:LEU:HD21	1.51	0.92
1:B:173:ARG:NE	1:B:174:LEU:HG	1.85	0.90
1:A:170:ASN:OD1	1:A:173:ARG:HB3	1.71	0.90
1:A:132:ASP:CB	1:A:136:VAL:HG21	2.01	0.90
1:A:29:LEU:O	1:A:30:GLN:HB2	1.72	0.89
1:B:174:LEU:HA	1:B:177:GLU:OE2	1.73	0.89
1:B:158:ARG:NH1	1:B:174:LEU:HD22	1.87	0.89
1:A:208:SER:H	1:A:211:GLN:HE21	1.16	0.89
1:A:132:ASP:CB	1:A:136:VAL:CG2	2.51	0.88
1:A:149:ALA:HB3	1:A:154:ARG:HD3	1.55	0.87
1:B:126:LEU:HD22	1:B:127:ILE:N	1.89	0.87
1:A:217:LEU:O	1:A:221:ARG:HG3	1.75	0.87
1:A:74:THR:HG22	1:A:75:ASN:H	1.39	0.87
1:B:79:GLU:OE2	1:B:86:ASP:CB	2.22	0.86
1:A:165:LYS:HB2	1:A:165:LYS:NZ	1.89	0.86
1:B:173:ARG:HE	1:B:174:LEU:CG	1.91	0.84
1:B:219:TYR:HA	1:B:222:GLN:NE2	1.93	0.84
1:A:74:THR:CG2	1:A:75:ASN:H	1.90	0.82
1:A:136:VAL:O	1:A:139:PRO:HD3	1.79	0.82
1:B:130:GLY:HA3	3:B:6407:CAR:HN42	1.46	0.81
1:B:170:ASN:H	1:B:173:ARG:NH2	1.81	0.79
1:B:22:CYS:SG	1:B:129:ASP:HB3	2.23	0.79

Continued on next page...

Continued from previous page...

Atom-1	Atom-2	Interatomic distance (Å)	Clash overlap (Å)
1:B:11:ASP:OD1	1:B:133:MET:HB2	1.84	0.78
1:B:134:GLY:O	1:B:196:ALA:HB2	1.83	0.77
1:B:177:GLU:O	1:B:181:ARG:HG3	1.83	0.77
1:A:15:GLY:O	1:A:154:ARG:HG2	1.85	0.77
1:B:175:LEU:HD21	1:B:179:LYS:NZ	2.00	0.76
1:B:170:ASN:N	1:B:173:ARG:HH22	1.83	0.76
1:B:13:PRO:HB2	1:B:154:ARG:NH2	2.00	0.76
1:B:169:VAL:HB	1:B:173:ARG:NH2	2.00	0.76
1:A:132:ASP:OD2	1:A:136:VAL:HG21	1.84	0.75
1:A:8:ILE:HG23	1:A:143:VAL:CG1	2.16	0.75
1:B:134:GLY:O	1:B:135:THR:HG23	1.85	0.75
1:A:163:GLN:HG3	1:A:169:VAL:HG21	1.69	0.74
1:A:41:ARG:HD3	1:A:92:ARG:NH1	2.03	0.73
1:A:159:MET:O	1:A:163:GLN:CG	2.37	0.72
1:A:78:LEU:HD12	1:A:79:GLU:H	1.55	0.71
1:A:10:ILE:HG22	1:A:128:ALA:O	1.89	0.71
1:A:10:ILE:HG23	1:A:129:ASP:HA	1.73	0.70
1:A:132:ASP:CG	1:A:136:VAL:HG21	2.10	0.70
1:A:169:VAL:HG23	1:A:169:VAL:O	1.90	0.70
1:A:165:LYS:HB2	1:A:165:LYS:HZ3	1.58	0.69
1:B:133:MET:HE1	1:B:137:VAL:HG11	1.74	0.69
1:B:110:ARG:NH2	1:B:132:ASP:OD2	2.24	0.68
1:B:57:GLU:HB2	1:B:106:PHE:CD2	2.28	0.68
1:A:74:THR:HG22	1:A:75:ASN:N	2.07	0.68
1:A:104:ALA:HB1	1:A:110:ARG:HH12	1.57	0.68
1:B:175:LEU:HD21	1:B:179:LYS:HZ1	1.58	0.67
1:B:60:LEU:HD23	1:B:63:LEU:CD2	2.25	0.67
1:A:207:LEU:HD12	1:A:211:GLN:HB3	1.76	0.67
1:A:90:GLU:O	1:A:93:THR:HG23	1.95	0.67
1:B:214:GLU:O	1:B:218:GLN:HB2	1.94	0.67
1:B:173:ARG:HB3	1:B:173:ARG:CZ	2.24	0.67
1:A:8:ILE:HG23	1:A:143:VAL:HG11	1.77	0.67
1:B:170:ASN:N	1:B:173:ARG:NH2	2.42	0.67
1:A:79:GLU:OE2	1:A:81:ILE:HD11	1.95	0.66
1:A:10:ILE:HD11	1:A:147:LEU:HB2	1.78	0.66
1:A:209:ILE:HD12	1:A:209:ILE:H	1.59	0.66
1:B:4:ILE:HD12	1:B:4:ILE:N	2.10	0.66
1:A:74:THR:HG22	1:A:76:GLY:H	1.61	0.66
1:B:10:ILE:HG23	1:B:129:ASP:HA	1.79	0.65
1:A:131:ARG:HH11	1:A:131:ARG:HG2	1.61	0.65
1:B:178:ILE:HG13	1:B:179:LYS:N	2.12	0.65

Continued on next page...

Continued from previous page...

Atom-1	Atom-2	Interatomic distance (Å)	Clash overlap (Å)
1:B:4:ILE:HD12	1:B:4:ILE:H	1.62	0.65
1:B:175:LEU:HD11	1:B:179:LYS:HE3	1.78	0.64
1:B:135:THR:CG2	1:B:196:ALA:HB2	2.27	0.64
1:B:10:ILE:O	1:B:129:ASP:HA	1.97	0.64
1:A:70:ARG:NH2	1:A:81:ILE:HD13	2.04	0.64
1:B:134:GLY:O	1:B:135:THR:CG2	2.45	0.64
1:A:143:VAL:HG12	1:A:145:ILE:HD11	1.79	0.64
1:A:70:ARG:HH21	1:A:81:ILE:CD1	2.06	0.64
1:A:111:GLU:HA	1:A:114:LEU:HG	1.78	0.63
1:B:34:LEU:HG	1:B:120:PHE:CG	2.34	0.63
1:B:71:PHE:CE2	1:B:80:VAL:HG13	2.34	0.63
1:A:178:ILE:HD13	1:A:181:ARG:NH2	2.13	0.63
1:A:104:ALA:HB1	1:A:110:ARG:NH1	2.15	0.62
1:B:74:THR:OG1	1:B:78:LEU:HD23	1.99	0.62
1:A:158:ARG:HH11	1:A:181:ARG:NH2	1.96	0.62
1:B:54:VAL:HA	1:B:60:LEU:HD11	1.81	0.62
1:B:10:ILE:HG21	1:B:22:CYS:SG	2.39	0.62
1:B:219:TYR:HA	1:B:222:GLN:HE21	1.61	0.62
1:B:60:LEU:CD2	1:B:63:LEU:HD21	2.28	0.61
1:A:18:LYS:HB2	1:A:18:LYS:NZ	2.15	0.61
1:B:178:ILE:HA	1:B:181:ARG:HD2	1.83	0.61
1:A:18:LYS:O	1:A:22:CYS:HB2	2.01	0.60
1:A:91:ILE:HG13	1:A:92:ARG:HD3	1.81	0.60
1:B:61:VAL:N	1:B:62:PRO:HD2	2.16	0.60
1:A:163:GLN:CG	1:A:169:VAL:HG21	2.31	0.60
1:B:10:ILE:HG12	1:B:21:LEU:HD12	1.83	0.60
1:A:165:LYS:HB2	1:A:165:LYS:HZ2	1.66	0.60
1:A:208:SER:H	1:A:211:GLN:NE2	1.95	0.60
1:B:37:GLY:HA3	3:B:6407:CAR:P	2.42	0.60
1:B:13:PRO:HG2	1:B:148:ASP:OD2	2.02	0.60
1:B:43:LEU:HD12	1:B:63:LEU:HD11	1.84	0.59
1:A:136:VAL:O	1:A:139:PRO:CD	2.50	0.59
1:A:43:LEU:HA	1:A:67:LEU:CD1	2.29	0.59
1:A:130:GLY:HA3	3:A:5407:CAR:HN42	1.67	0.59
1:B:132:ASP:HB2	1:B:136:VAL:HB	1.84	0.59
1:B:57:GLU:OE2	1:B:107:PRO:HD2	2.03	0.59
1:A:132:ASP:CB	1:A:136:VAL:HG23	2.21	0.59
1:B:170:ASN:O	1:B:173:ARG:NH2	2.36	0.59
1:A:59:ALA:O	1:A:62:PRO:HD2	2.03	0.59
1:B:54:VAL:HG11	4:B:6429:HOH:O	2.02	0.59
1:B:43:LEU:HD23	1:B:103:VAL:CG1	2.33	0.59

Continued on next page...

Continued from previous page...

Atom-1	Atom-2	Interatomic distance (Å)	Clash overlap (Å)
1:B:174:LEU:CD2	1:B:177:GLU:OE2	2.40	0.58
1:B:157:ARG:O	1:B:161:GLN:HG2	2.04	0.58
1:B:116:ARG:NH1	1:B:116:ARG:HB2	2.17	0.58
1:A:136:VAL:C	1:A:139:PRO:HD3	2.24	0.58
1:B:135:THR:HG23	1:B:196:ALA:HB2	1.86	0.58
1:A:149:ALA:HB3	1:A:154:ARG:HD2	1.86	0.57
1:B:48:LEU:HD13	1:B:95:GLU:OE1	2.02	0.57
1:B:61:VAL:N	1:B:62:PRO:CD	2.67	0.57
1:B:131:ARG:HG2	1:B:131:ARG:HH11	1.68	0.57
1:B:34:LEU:HB2	1:B:126:LEU:HD21	1.86	0.57
1:A:145:ILE:HD12	1:A:145:ILE:N	2.21	0.56
1:B:191:ALA:N	1:B:192:PRO:HD3	2.21	0.56
1:B:91:ILE:HG13	1:B:92:ARG:HD3	1.88	0.56
1:B:178:ILE:HG13	1:B:179:LYS:H	1.71	0.56
1:A:131:ARG:NH1	1:A:131:ARG:HG2	2.20	0.56
1:B:142:PRO:O	1:B:223:LYS:HE2	2.06	0.56
1:A:191:ALA:N	1:A:192:PRO:HD3	2.22	0.55
1:A:107:PRO:HA	1:A:190:VAL:HG21	1.89	0.55
1:A:56:SER:O	1:A:60:LEU:HG	2.06	0.55
1:A:43:LEU:HD23	1:A:103:VAL:HG11	1.89	0.55
1:B:148:ASP:OD2	1:B:149:ALA:N	2.37	0.55
1:B:87:VAL:O	1:B:88:SER:C	2.44	0.55
1:B:10:ILE:HG23	1:B:129:ASP:CA	2.37	0.55
1:B:50:HIS:HE1	1:B:83:GLU:OE2	1.89	0.55
1:B:42:VAL:HG21	1:B:69:VAL:HG11	1.90	0.54
1:B:29:LEU:HD12	1:B:29:LEU:N	2.22	0.54
1:A:116:ARG:NH1	1:A:116:ARG:HB2	2.23	0.54
1:B:188:ARG:O	1:B:192:PRO:HG3	2.07	0.54
1:A:3:ALA:HB3	1:A:123:LEU:HD11	1.90	0.54
1:B:33:LEU:HD13	1:B:78:LEU:HD21	1.90	0.54
1:A:69:VAL:HG12	1:A:70:ARG:N	2.23	0.54
1:A:190:VAL:C	1:A:192:PRO:HD3	2.29	0.54
1:A:209:ILE:O	1:A:213:ILE:HG13	2.07	0.54
1:B:169:VAL:CG2	1:B:174:LEU:HD11	2.37	0.53
1:B:173:ARG:HE	1:B:174:LEU:N	2.06	0.53
1:B:44:ALA:HB1	1:B:99:ALA:CB	2.39	0.53
1:B:43:LEU:HD23	1:B:103:VAL:HG11	1.88	0.53
1:A:32:HIS:CE1	1:A:122:GLU:HB3	2.43	0.53
1:A:39:ILE:HA	1:A:42:VAL:HG22	1.91	0.53
1:B:126:LEU:HD22	1:B:127:ILE:H	1.70	0.53
1:A:59:ALA:C	1:A:62:PRO:HD2	2.29	0.53

Continued on next page...

Continued from previous page...

Atom-1	Atom-2	Interatomic distance (Å)	Clash overlap (Å)
1:B:25:MET:HB3	1:B:127:ILE:HD13	1.90	0.53
1:B:34:LEU:HG	1:B:120:PHE:CD2	2.43	0.53
1:A:143:VAL:HG12	1:A:145:ILE:CD1	2.38	0.53
1:A:8:ILE:HA	1:A:143:VAL:HB	1.91	0.52
1:A:72:VAL:C	1:A:74:THR:N	2.62	0.52
1:B:52:VAL:HG11	1:B:63:LEU:HD22	1.91	0.52
1:A:74:THR:C	1:A:75:ASN:CG	2.68	0.52
1:B:53:ASP:O	1:B:60:LEU:HD12	2.09	0.52
1:A:43:LEU:HD22	1:A:113:LEU:HD21	1.92	0.51
1:A:23:LYS:HE2	1:A:24:ALA:N	2.25	0.51
1:A:184:ARG:O	1:A:188:ARG:HB3	2.10	0.51
1:B:61:VAL:HB	1:B:62:PRO:HD3	1.92	0.51
1:B:44:ALA:HB1	1:B:99:ALA:HB3	1.92	0.51
1:A:176:ALA:O	1:A:180:GLU:HB2	2.10	0.51
1:B:151:SER:O	1:B:178:ILE:HD11	2.09	0.51
1:B:33:LEU:HD23	1:B:34:LEU:N	2.26	0.51
1:A:72:VAL:C	1:A:74:THR:H	2.14	0.51
1:B:57:GLU:O	1:B:61:VAL:HG23	2.10	0.51
1:A:15:GLY:C	1:A:154:ARG:HG2	2.31	0.51
1:B:9:THR:HB	1:B:133:MET:HB3	1.92	0.50
1:A:122:GLU:HG2	1:A:123:LEU:H	1.75	0.50
1:B:168:SER:O	1:B:169:VAL:HG13	2.11	0.50
1:A:122:GLU:HG2	1:A:123:LEU:N	2.26	0.50
1:A:7:VAL:CG2	1:A:121:ARG:HG3	2.41	0.50
1:A:72:VAL:HG11	1:A:79:GLU:OE1	2.12	0.50
1:A:132:ASP:O	1:A:136:VAL:HG23	2.12	0.50
1:A:74:THR:HG21	1:A:77:ASN:O	1.98	0.49
1:B:174:LEU:HA	1:B:177:GLU:CD	2.31	0.49
1:B:87:VAL:O	1:B:89:GLY:CA	2.58	0.49
1:B:131:ARG:HD2	1:B:193:LEU:HD22	1.94	0.49
1:B:173:ARG:NE	1:B:174:LEU:N	2.59	0.49
1:A:113:LEU:O	1:A:117:GLN:HG3	2.12	0.49
1:A:34:LEU:HG	1:A:120:PHE:CG	2.47	0.49
1:B:36:SER:HB3	1:B:129:ASP:O	2.12	0.49
1:B:173:ARG:HD2	1:B:177:GLU:OE1	2.11	0.49
1:A:178:ILE:CD1	1:A:181:ARG:NH2	2.75	0.49
1:A:98:ASN:O	1:A:100:ALA:N	2.45	0.49
1:B:13:PRO:CG	1:B:148:ASP:OD2	2.59	0.49
1:A:132:ASP:CB	1:A:191:ALA:HB1	2.42	0.49
1:B:87:VAL:CG2	1:B:91:ILE:CG2	2.90	0.49
1:B:68:ASP:O	1:B:69:VAL:HG23	2.13	0.49

Continued on next page...

Continued from previous page...

Atom-1	Atom-2	Interatomic distance (Å)	Clash overlap (Å)
1:B:106:PHE:O	1:B:109:VAL:HB	2.12	0.49
1:B:182:ASP:HA	1:B:185:ASP:HB2	1.94	0.49
1:B:173:ARG:CZ	1:B:174:LEU:HG	2.41	0.49
1:B:204:SER:HA	1:B:207:LEU:HD12	1.95	0.48
1:B:116:ARG:NH1	1:B:116:ARG:CB	2.76	0.48
1:B:87:VAL:O	1:B:90:GLU:N	2.47	0.48
1:A:221:ARG:HH11	1:A:221:ARG:HG2	1.78	0.48
1:A:32:HIS:CE1	1:A:123:LEU:O	2.66	0.48
1:B:173:ARG:O	1:B:175:LEU:N	2.46	0.48
1:B:33:LEU:HD22	1:B:78:LEU:HD21	1.96	0.48
1:A:207:LEU:HD23	4:A:5426:HOH:O	2.13	0.48
1:B:29:LEU:HD11	1:B:217:LEU:CD2	2.43	0.48
1:A:50:HIS:HE1	1:A:83:GLU:OE2	1.95	0.48
1:B:158:ARG:HH12	1:B:174:LEU:CD2	2.13	0.48
1:A:41:ARG:HE	3:A:5407:CAR:P	2.37	0.48
1:B:116:ARG:CB	1:B:116:ARG:HH11	2.27	0.48
1:A:160:LEU:HA	1:A:163:GLN:HB2	1.95	0.48
1:A:34:LEU:O	1:A:129:ASP:HB3	2.14	0.48
1:A:42:VAL:HG21	1:A:69:VAL:HG21	1.95	0.47
1:B:161:GLN:HA	1:B:161:GLN:HE21	1.78	0.47
1:B:204:SER:HA	1:B:207:LEU:CD1	2.44	0.47
1:A:32:HIS:HE1	1:A:123:LEU:O	1.97	0.47
1:B:68:ASP:HB3	1:B:83:GLU:HG3	1.96	0.47
1:A:132:ASP:OD2	1:A:191:ALA:HB1	2.13	0.47
1:A:44:ALA:HB1	1:A:99:ALA:CB	2.44	0.47
1:A:38:ALA:O	1:A:42:VAL:HG13	2.15	0.47
1:A:46:ALA:O	1:A:50:HIS:HB2	2.15	0.47
1:A:72:VAL:HG13	1:A:79:GLU:HB3	1.96	0.47
1:A:139:PRO:O	1:A:144:LYS:NZ	2.42	0.47
1:B:106:PHE:HA	1:B:107:PRO:HD3	1.71	0.47
1:A:191:ALA:N	1:A:192:PRO:CD	2.78	0.47
1:B:90:GLU:O	1:B:96:VAL:HG21	2.15	0.47
1:B:59:ALA:O	1:B:62:PRO:HD2	2.15	0.47
1:B:21:LEU:O	1:B:21:LEU:HD22	2.16	0.46
1:A:67:LEU:HA	1:A:67:LEU:HD23	1.67	0.46
1:A:141:ALA:HB3	1:A:144:LYS:HE2	1.97	0.46
1:B:215:LYS:HG3	4:B:6432:HOH:O	2.15	0.46
1:A:137:VAL:HG12	1:A:138:PHE:CE2	2.50	0.46
1:B:150:SER:O	1:B:154:ARG:HD3	2.16	0.46
1:A:98:ASN:O	1:A:99:ALA:C	2.53	0.46
1:B:207:LEU:HA	1:B:211:GLN:NE2	2.30	0.46

Continued on next page...

Continued from previous page...

Atom-1	Atom-2	Interatomic distance (Å)	Clash overlap (Å)
1:B:33:LEU:HD22	1:B:78:LEU:CD2	2.46	0.46
1:B:130:GLY:HA2	3:B:6407:CAR:H5	1.97	0.46
1:B:131:ARG:NH1	1:B:131:ARG:HG2	2.31	0.46
1:A:7:VAL:O	1:A:142:PRO:HD2	2.16	0.46
1:B:135:THR:HG22	1:B:196:ALA:HB2	1.96	0.46
1:B:45:LEU:HD11	1:B:90:GLU:OE1	2.16	0.46
1:A:91:ILE:HG13	1:A:92:ARG:NH1	2.30	0.46
1:B:162:LEU:HB3	1:B:167:PHE:HB2	1.97	0.46
1:A:88:SER:HA	1:A:91:ILE:HD11	1.97	0.46
1:B:87:VAL:CG2	1:B:91:ILE:HG23	2.46	0.45
1:A:33:LEU:C	1:A:33:LEU:HD23	2.36	0.45
1:B:173:ARG:HD2	1:B:177:GLU:CD	2.37	0.45
1:B:208:SER:OG	1:B:211:GLN:HG3	2.16	0.45
1:B:170:ASN:HB2	1:B:172:GLU:OE1	2.16	0.45
1:A:169:VAL:CG2	1:A:169:VAL:O	2.60	0.45
1:A:213:ILE:O	1:A:217:LEU:HB2	2.17	0.45
1:B:25:MET:HB3	1:B:127:ILE:CD1	2.47	0.45
1:A:7:VAL:HG22	1:A:121:ARG:HG3	1.98	0.45
1:B:126:LEU:HD11	1:B:128:ALA:HB2	1.98	0.45
1:B:191:ALA:N	1:B:192:PRO:CD	2.79	0.45
1:A:87:VAL:HG23	1:A:91:ILE:HD13	1.97	0.45
1:A:165:LYS:CB	1:A:165:LYS:NZ	2.71	0.45
1:A:150:SER:OG	1:A:153:GLU:HB3	2.17	0.45
1:A:141:ALA:HA	1:A:142:PRO:HD3	1.84	0.44
1:A:13:PRO:HB2	1:A:154:ARG:CZ	2.48	0.44
1:B:110:ARG:HB3	4:B:6415:HOH:O	2.16	0.44
1:B:106:PHE:HB2	1:B:109:VAL:CG2	2.47	0.44
1:B:50:HIS:CE1	1:B:83:GLU:OE2	2.70	0.44
1:B:33:LEU:HD23	1:B:33:LEU:C	2.38	0.44
1:A:110:ARG:O	1:A:114:LEU:HG	2.18	0.44
1:A:18:LYS:HB2	1:A:18:LYS:HZ2	1.83	0.44
1:A:117:GLN:O	1:A:120:PHE:HB2	2.18	0.44
1:A:43:LEU:CA	1:A:67:LEU:HD11	2.34	0.44
1:A:91:ILE:HG13	1:A:92:ARG:HH11	1.82	0.43
1:B:126:LEU:HD22	1:B:126:LEU:C	2.39	0.43
1:B:178:ILE:O	1:B:181:ARG:HB2	2.18	0.43
1:A:155:ALA:HB2	1:A:178:ILE:HG13	1.99	0.43
1:A:118:ARG:HG3	1:A:137:VAL:HG13	1.99	0.43
1:B:43:LEU:HD13	1:B:67:LEU:HD22	2.00	0.43
1:B:148:ASP:O	1:B:203:ASP:HA	2.19	0.43
1:A:131:ARG:N	3:A:5407:CAR:N4	2.62	0.43

Continued on next page...

Continued from previous page...

Atom-1	Atom-2	Interatomic distance (Å)	Clash overlap (Å)
1:A:208:SER:N	1:A:211:GLN:HE21	1.98	0.43
1:B:135:THR:HG22	1:B:196:ALA:CB	2.49	0.43
1:B:13:PRO:HB2	1:B:154:ARG:CZ	2.46	0.43
1:A:194:VAL:HA	1:A:195:PRO:HD3	1.76	0.43
1:A:78:LEU:HD12	1:A:79:GLU:N	2.29	0.43
1:B:169:VAL:HB	1:B:174:LEU:HD11	2.01	0.43
1:A:57:GLU:CD	1:A:108:ARG:HD3	2.39	0.43
1:A:57:GLU:HG2	1:A:108:ARG:HD3	2.00	0.43
1:A:33:LEU:HD23	1:A:34:LEU:N	2.33	0.42
1:B:44:ALA:O	1:B:47:ALA:HB3	2.19	0.42
1:A:52:VAL:HG21	1:A:63:LEU:HD22	2.02	0.42
1:A:143:VAL:CG1	1:A:145:ILE:HD11	2.49	0.42
1:A:152:GLU:HG3	1:A:175:LEU:HD21	2.00	0.42
1:B:10:ILE:HG23	1:B:129:ASP:CB	2.49	0.42
1:A:80:VAL:HG21	1:A:91:ILE:HD11	2.02	0.42
1:B:180:GLU:O	1:B:183:ASP:HB3	2.20	0.42
1:A:132:ASP:O	1:A:136:VAL:HB	2.19	0.42
1:A:71:PHE:HD2	1:A:78:LEU:HD11	1.84	0.42
1:B:52:VAL:CG1	1:B:60:LEU:HG	2.50	0.42
1:B:107:PRO:HG3	1:B:190:VAL:HG21	2.01	0.42
1:A:172:GLU:OE1	1:A:172:GLU:HA	2.19	0.42
1:A:137:VAL:HG12	1:A:138:PHE:CD2	2.55	0.42
1:B:60:LEU:HA	1:B:63:LEU:HD23	2.00	0.42
1:A:186:ARG:HG3	1:A:193:LEU:HD23	2.02	0.42
1:A:54:VAL:C	1:A:60:LEU:HD11	2.28	0.41
1:B:42:VAL:HG21	1:B:69:VAL:HG21	2.03	0.41
1:A:7:VAL:HG13	1:A:126:LEU:O	2.19	0.41
1:B:130:GLY:CA	3:B:6407:CAR:HN42	2.26	0.41
1:A:103:VAL:HG13	1:A:109:VAL:HG11	2.02	0.41
1:B:208:SER:O	1:B:212:VAL:HG23	2.21	0.41
1:B:42:VAL:CG2	1:B:69:VAL:HG21	2.49	0.41
1:A:110:ARG:HD3	1:A:190:VAL:HG23	2.02	0.41
1:A:109:VAL:O	1:A:113:LEU:HG	2.20	0.41
1:A:113:LEU:C	1:A:117:GLN:HE21	2.24	0.41
1:B:9:THR:OG1	1:B:144:LYS:HG2	2.21	0.41
1:B:188:ARG:NE	1:B:190:VAL:O	2.54	0.41
1:A:21:LEU:HD13	1:A:212:VAL:HG12	2.03	0.41
1:A:13:PRO:HG2	1:A:148:ASP:OD2	2.20	0.41
1:A:177:GLU:O	1:A:180:GLU:HB3	2.21	0.41
1:A:173:ARG:NH1	1:A:173:ARG:HG2	2.36	0.41
1:B:29:LEU:CD1	1:B:29:LEU:N	2.83	0.41

Continued on next page...

Continued from previous page...

Atom-1	Atom-2	Interatomic distance (Å)	Clash overlap (Å)
1:B:196:ALA:HB3	1:B:199:ALA:HB2	2.03	0.41
1:B:188:ARG:HG2	1:B:190:VAL:H	1.86	0.41
1:B:25:MET:HG2	1:B:217:LEU:CD2	2.51	0.41
1:A:144:LYS:O	1:A:199:ALA:HA	2.21	0.40
1:B:71:PHE:N	1:B:71:PHE:CD1	2.89	0.40
1:B:48:LEU:HD13	1:B:95:GLU:CD	2.40	0.40
1:B:70:ARG:NH2	1:B:81:ILE:CD1	2.84	0.40
1:A:54:VAL:O	1:A:60:LEU:CD1	2.36	0.40
1:A:24:ALA:CB	1:A:213:ILE:HD13	2.52	0.40
1:B:106:PHE:HB2	1:B:109:VAL:HB	2.03	0.40
1:A:65:SER:HB3	1:A:112:ALA:HB1	2.04	0.40
1:A:159:MET:O	1:A:159:MET:HG2	2.21	0.40
1:A:154:ARG:HH11	1:A:154:ARG:HD3	1.75	0.40
1:B:52:VAL:HG11	1:B:60:LEU:HG	2.03	0.40
1:B:68:ASP:O	1:B:82:LEU:HD12	2.21	0.40
1:B:7:VAL:O	1:B:141:ALA:HB1	2.22	0.40
1:A:90:GLU:O	1:A:96:VAL:HG21	2.22	0.40
1:A:5:ALA:HA	1:A:6:PRO:HD3	1.83	0.40

All (1) symmetry-related close contacts are listed below. The label for Atom-2 includes the symmetry operator and encoded unit-cell translations to be applied.

Atom-1	Atom-2	Interatomic distance (Å)	Clash overlap (Å)
1:A:166:GLY:O	1:B:87:VAL:O[3_646]	1.98	0.22

5.3 Torsion angles [i](#)

5.3.1 Protein backbone [i](#)

In the following table, the Percentiles column shows the percent Ramachandran outliers of the chain as a percentile score with respect to all X-ray entries followed by that with respect to entries of similar resolution.

The Analysed column shows the number of residues for which the backbone conformation was analysed, and the total number of residues.

Mol	Chain	Analysed	Favoured	Allowed	Outliers	Percentiles	
1	A	219/227 (96%)	197 (90%)	21 (10%)	1 (0%)	34	34
1	B	219/227 (96%)	200 (91%)	13 (6%)	6 (3%)	6	3

Continued on next page...

Continued from previous page...

Mol	Chain	Analysed	Favoured	Allowed	Outliers	Percentiles	
All	All	438/454 (96%)	397 (91%)	34 (8%)	7 (2%)	12	7

All (7) Ramachandran outliers are listed below:

Mol	Chain	Res	Type
1	A	75	ASN
1	B	88	SER
1	B	67	LEU
1	B	174	LEU
1	B	76	GLY
1	B	135	THR
1	B	89	GLY

5.3.2 Protein sidechains ⓘ

In the following table, the Percentiles column shows the percent sidechain outliers of the chain as a percentile score with respect to all X-ray entries followed by that with respect to entries of similar resolution.

The Analysed column shows the number of residues for which the sidechain conformation was analysed, and the total number of residues.

Mol	Chain	Analysed	Rotameric	Outliers	Percentiles	
1	A	177/181 (98%)	167 (94%)	10 (6%)	26	27
1	B	177/181 (98%)	160 (90%)	17 (10%)	10	8
All	All	354/362 (98%)	327 (92%)	27 (8%)	16	15

All (27) residues with a non-rotameric sidechain are listed below:

Mol	Chain	Res	Type
1	A	23	LYS
1	A	34	LEU
1	A	51	HIS
1	A	67	LEU
1	A	93	THR
1	A	98	ASN
1	A	170	ASN
1	A	173	ARG
1	A	200	LEU
1	A	202	LEU
1	B	4	ILE

Continued on next page...

Continued from previous page...

Mol	Chain	Res	Type
1	B	34	LEU
1	B	51	HIS
1	B	60	LEU
1	B	63	LEU
1	B	67	LEU
1	B	78	LEU
1	B	79	GLU
1	B	126	LEU
1	B	133	MET
1	B	158	ARG
1	B	161	GLN
1	B	173	ARG
1	B	180	GLU
1	B	184	ARG
1	B	190	VAL
1	B	214	GLU

Some sidechains can be flipped to improve hydrogen bonding and reduce clashes. All (10) such sidechains are listed below:

Mol	Chain	Res	Type
1	A	50	HIS
1	A	98	ASN
1	A	117	GLN
1	A	156	HIS
1	A	211	GLN
1	B	32	HIS
1	B	50	HIS
1	B	161	GLN
1	B	211	GLN
1	B	222	GLN

5.3.3 RNA ⓘ

There are no RNA molecules in this entry.

5.4 Non-standard residues in protein, DNA, RNA chains ⓘ

There are no non-standard protein/DNA/RNA residues in this entry.

5.5 Carbohydrates ⓘ

There are no carbohydrates in this entry.

5.6 Ligand geometry ⓘ

5 ligands are modelled in this entry.

In the following table, the Counts columns list the number of bonds (or angles) for which Mogul statistics could be retrieved, the number of bonds (or angles) that are observed in the model and the number of bonds (or angles) that are defined in the chemical component dictionary. The Link column lists molecule types, if any, to which the group is linked. The Z score for a bond length (or angle) is the number of standard deviations the observed value is removed from the expected value. A bond length (or angle) with $|Z| > 2$ is considered an outlier worth inspection. RMSZ is the root-mean-square of all Z scores of the bond lengths (or angles).

Mol	Type	Chain	Res	Link	Bond lengths			Bond angles		
					Counts	RMSZ	$\# Z > 2$	Counts	RMSZ	$\# Z > 2$
2	SO4	A	501	-	4,4,4	0.19	0	6,6,6	0.08	0
3	CAR	A	5407	-	17,22,22	0.86	0	22,33,33	1.13	2 (9%)
2	SO4	B	601	-	4,4,4	0.16	0	6,6,6	0.08	0
2	SO4	B	602	-	4,4,4	0.18	0	6,6,6	0.07	0
3	CAR	B	6407	-	17,22,22	0.83	0	22,33,33	1.03	2 (9%)

In the following table, the Chirals column lists the number of chiral outliers, the number of chiral centers analysed, the number of these observed in the model and the number defined in the chemical component dictionary. Similar counts are reported in the Torsion and Rings columns. '-' means no outliers of that kind were identified.

Mol	Type	Chain	Res	Link	Chirals	Torsions	Rings
2	SO4	A	501	-	-	0/0/0/0	0/0/0/0
3	CAR	A	5407	-	-	0/6/26/26	0/2/2/2
2	SO4	B	601	-	-	0/0/0/0	0/0/0/0
2	SO4	B	602	-	-	0/0/0/0	0/0/0/0
3	CAR	B	6407	-	-	0/6/26/26	0/2/2/2

There are no bond length outliers.

All (4) bond angle outliers are listed below:

Mol	Chain	Res	Type	Atoms	Z	Observed(°)	Ideal(°)
3	A	5407	CAR	OP2-P-OP1	2.72	119.33	110.58
3	B	6407	CAR	OP2-P-OP1	2.78	119.54	110.58
3	B	6407	CAR	C2-N3-C4	3.06	119.93	115.61
3	A	5407	CAR	C2-N3-C4	3.18	120.09	115.61

There are no chirality outliers.

There are no torsion outliers.

There are no ring outliers.

2 monomers are involved in 7 short contacts:

Mol	Chain	Res	Type	Clashes	Symm-Clashes
3	A	5407	CAR	3	0
3	B	6407	CAR	4	0

5.7 Other polymers [i](#)

There are no such residues in this entry.

5.8 Polymer linkage issues [i](#)

There are no chain breaks in this entry.

6 Fit of model and data [i](#)

6.1 Protein, DNA and RNA chains [i](#)

EDS was not executed - this section will therefore be empty.

6.2 Non-standard residues in protein, DNA, RNA chains [i](#)

EDS was not executed - this section will therefore be empty.

6.3 Carbohydrates [i](#)

EDS was not executed - this section will therefore be empty.

6.4 Ligands [i](#)

EDS was not executed - this section will therefore be empty.

6.5 Other polymers [i](#)

EDS was not executed - this section will therefore be empty.